



39.91568, -108.2609, 6596.1ft, 278°
01/14/2021 01:41:34 PM



COLORADO
Oil & Gas Conservation
Commission
Department of Natural Resources

Photo 1. Location.

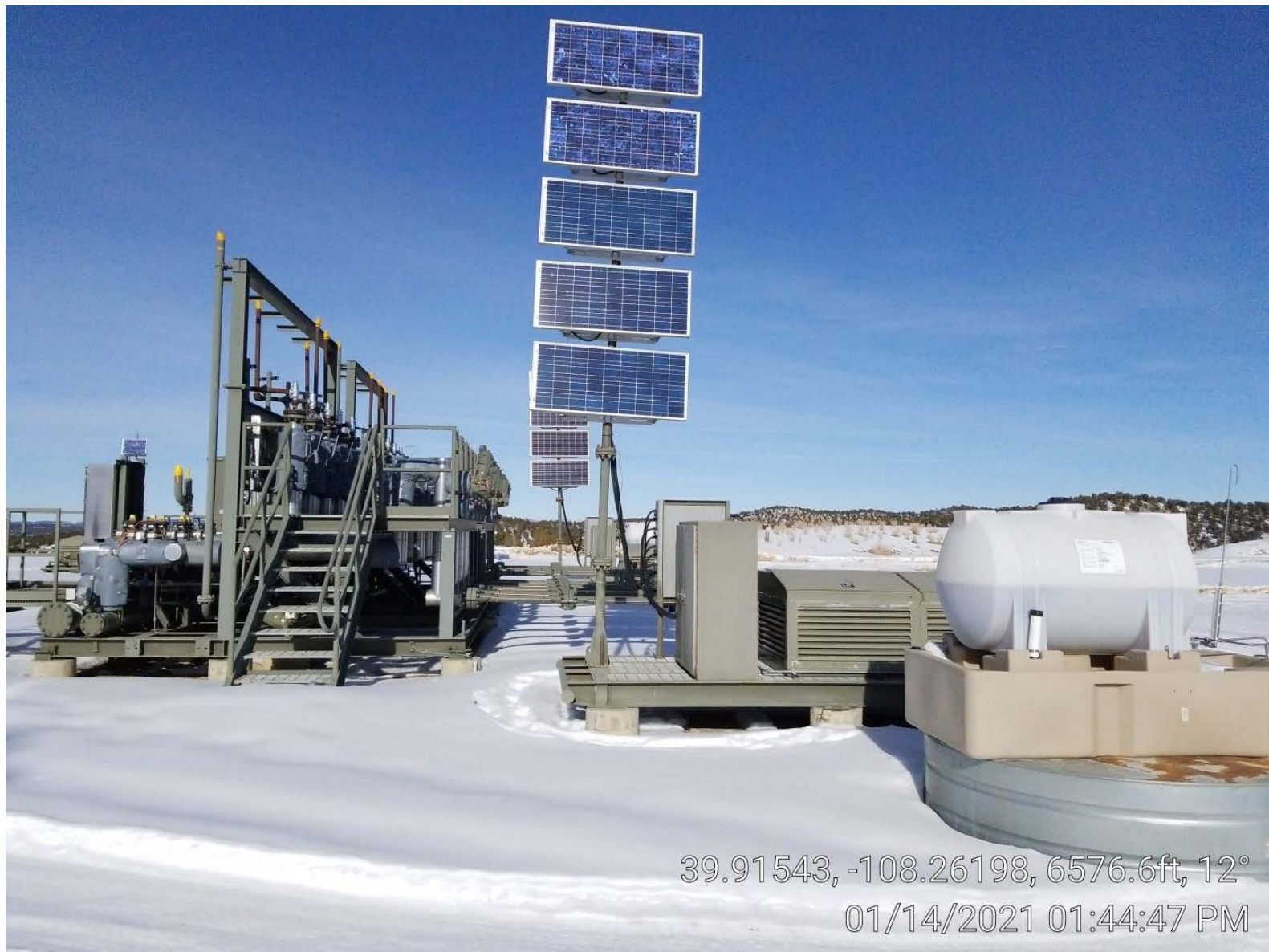
API: 05-103-11083 to 11090 and 11146
Piceance Creek Unit 197-34B Inspection: 700405002



COLORADO
Oil & Gas Conservation
Commission
Department of Natural Resources

Photo 2. Wells.

API: 05-103-11083 to 11090 and 11146
Piceance Creek Unit 197-34B Inspection: 700405002



39.91543, -108.26198, 6576.6ft, 12°
01/14/2021 01:44:47 PM



COLORADO
Oil & Gas Conservation
Commission
Department of Natural Resources

Photo 4. Manifold.

API: 05-103-11083 to 11090 and 11146
Piceance Creek Unit 197-34B Inspection: 700405002



COLORADO
Oil & Gas Conservation
Commission
Department of Natural Resources

Photo 5. Separator.

API: 05-103-11083 to 11090 and 11146
Piceance Creek Unit 197-34B Inspection: 700405002