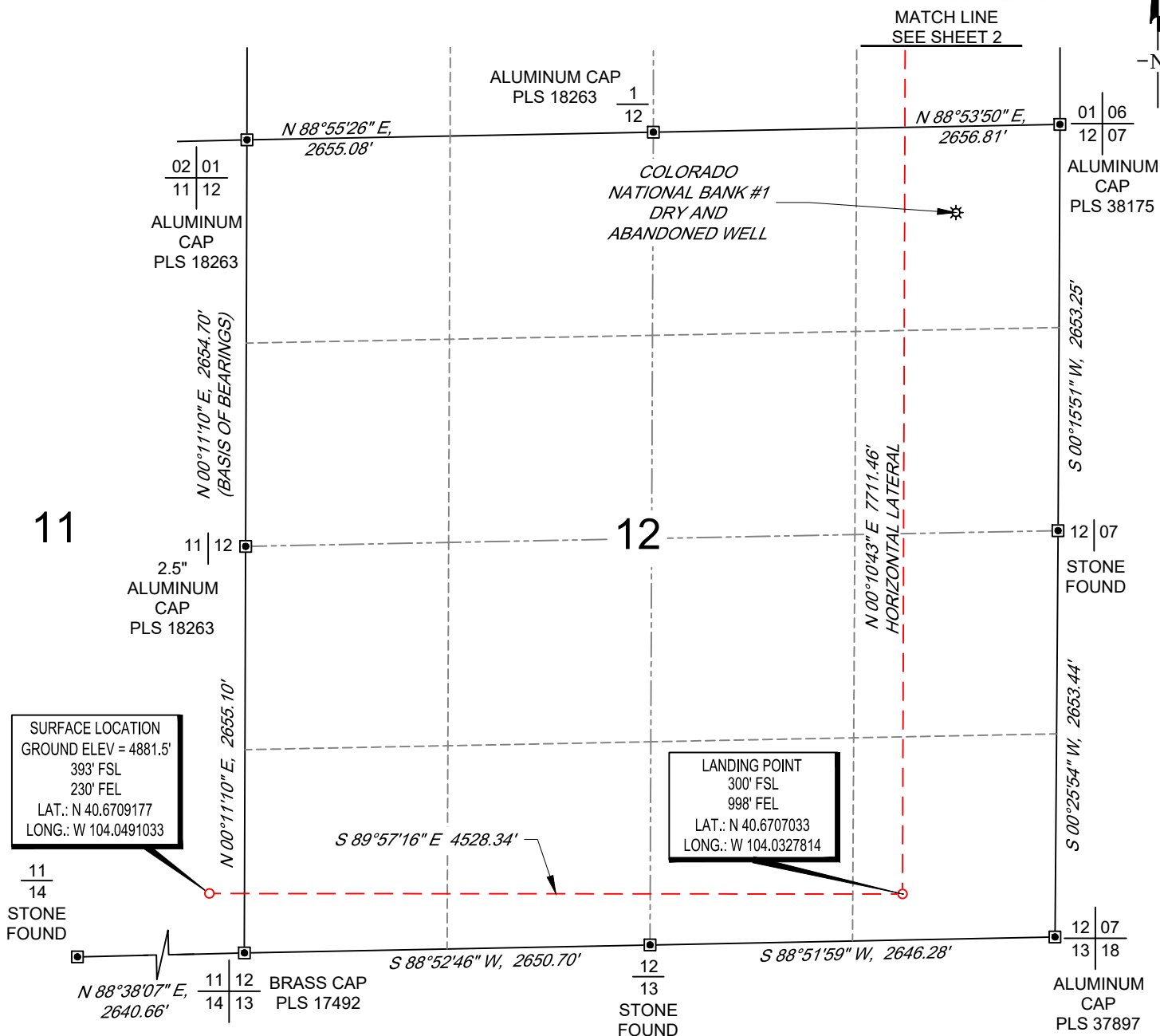


SCALE: 1" = 1000'

0' 500' 1000'

WELL LOCATION MAP

SHL SE/4 SE/4, SECTION 11, TOWNSHIP 8-N, RANGE 60-W
LP SE/4 SE/4, SECTION 12, TOWNSHIP 8-N, RANGE 60-W
BHL SE/4 NE/4, SECTION 1, TOWNSHIP 8-N, RANGE 60-W
WELD COUNTY, COLORADO



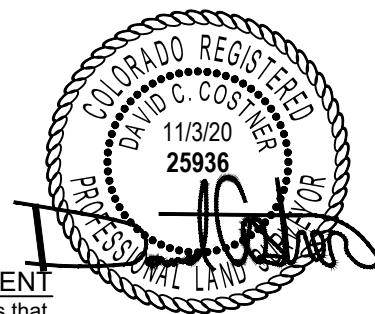
NOTES

1. Horizontal (NAD 83) and vertical (NAVD 88) datum is based on the Trimble VRS Network or OPUS Solution.
2. All directions, distances, and dimensions shown hereon are based on coordinates from the "Colorado coordinate system of 1983 north zone" (article 52 of title 38, C.R.S.).
3. All section line dimensions shown hereon are based on field measurements of existing monuments and/or physical evidence found in the field unless otherwise indicated.
4. Physical features shown hereon are for graphical representation only.
5. See Form 2A, if applicable for visible improvements within 500' of wellhead.
6. Distances to nearest section lines are measured perpendicularly.
7. This is not a land survey nor land survey plat.

PDOP Reading: 1.5 Instrument Operator: **Joe DiGregorio** Date Surveyed: **02/24/2018**

SURVEYOR'S STATEMENT

The undersigned hereby states that the well location shown hereon was staked on the ground based on existing monumentation and/or physical evidence found in the field and is correct to the best of my knowledge, information and belief.

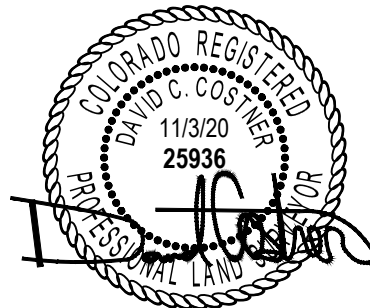
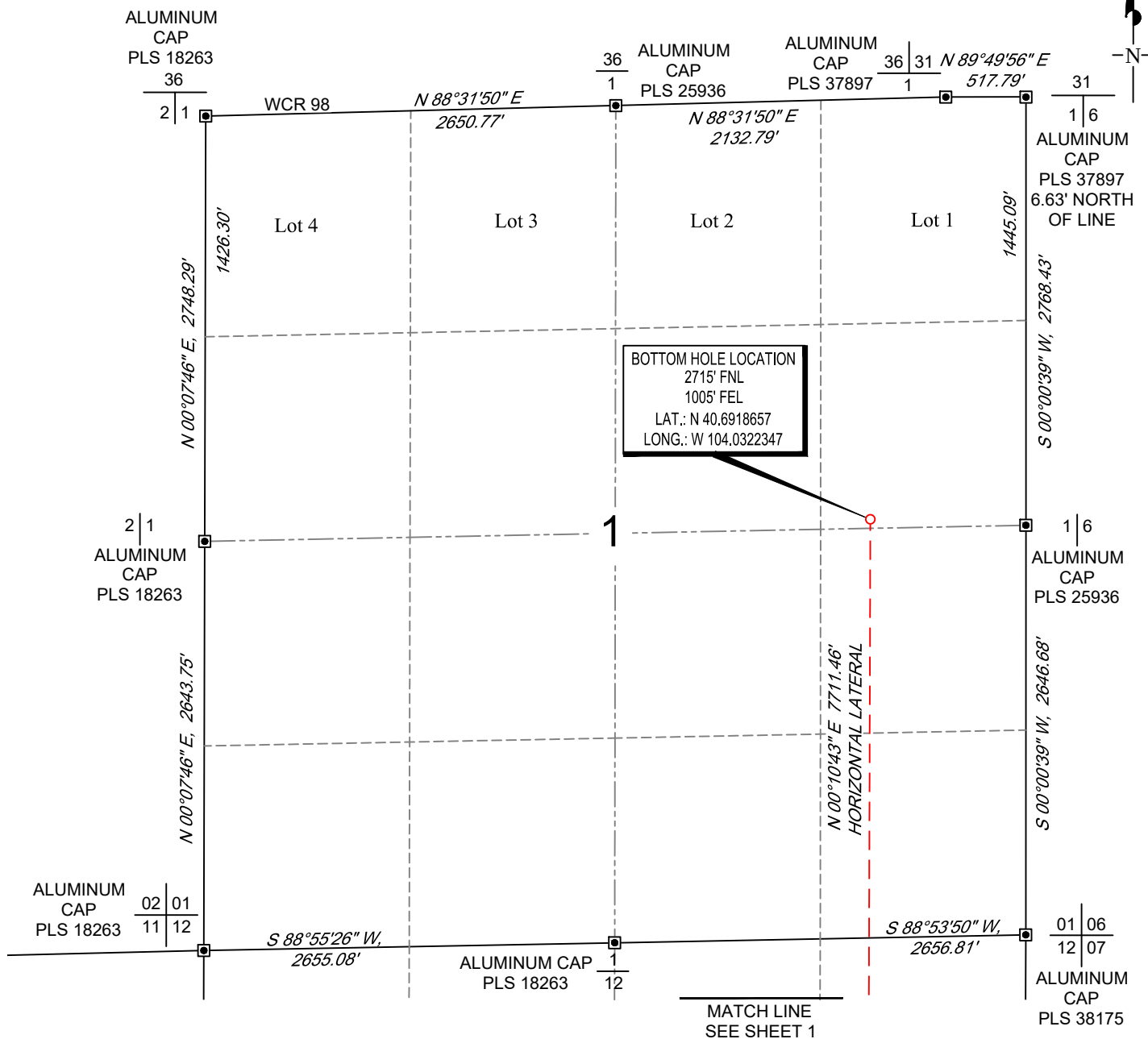


SCALE: 1" = 1000'

0' 500' 1000'

BOTTOM HOLE MAP

SHL SE/4 SE/4, SECTION 11, TOWNSHIP 8-N, RANGE 60-W
 LP SE/4 SE/4, SECTION 12, TOWNSHIP 8-N, RANGE 60-W
 BHL SE/4 NE/4, SECTION 1, TOWNSHIP 8-N, RANGE 60-W
 WELD COUNTY, COLORADO



VERDAD RESOURCES
SONIC STAR 1101-13H

MML	03/01/2018	REVISION:	
SHEET :	2 OF 2	REV1	12/17/2018
FILE:LO_SONIC_STAR_1101_13H_REV2		REV2	11/03/2020

TOPOGRAPHIC
 LOYALTY INNOVATION LEGACY
 520 Stacy Court Ste B, Lafayette, CO 80026
 303.666.0379 www.topographic.com