

# Bayswater Exploration & Production, LLC

Well Name: **Groves Farm X-34-33HN**

Surface Location: Groves Farm 34-L Pad Sec.34-T7N-R65W

North American Datum 1983 , US State Plane 1983, Colorado Northern Zone

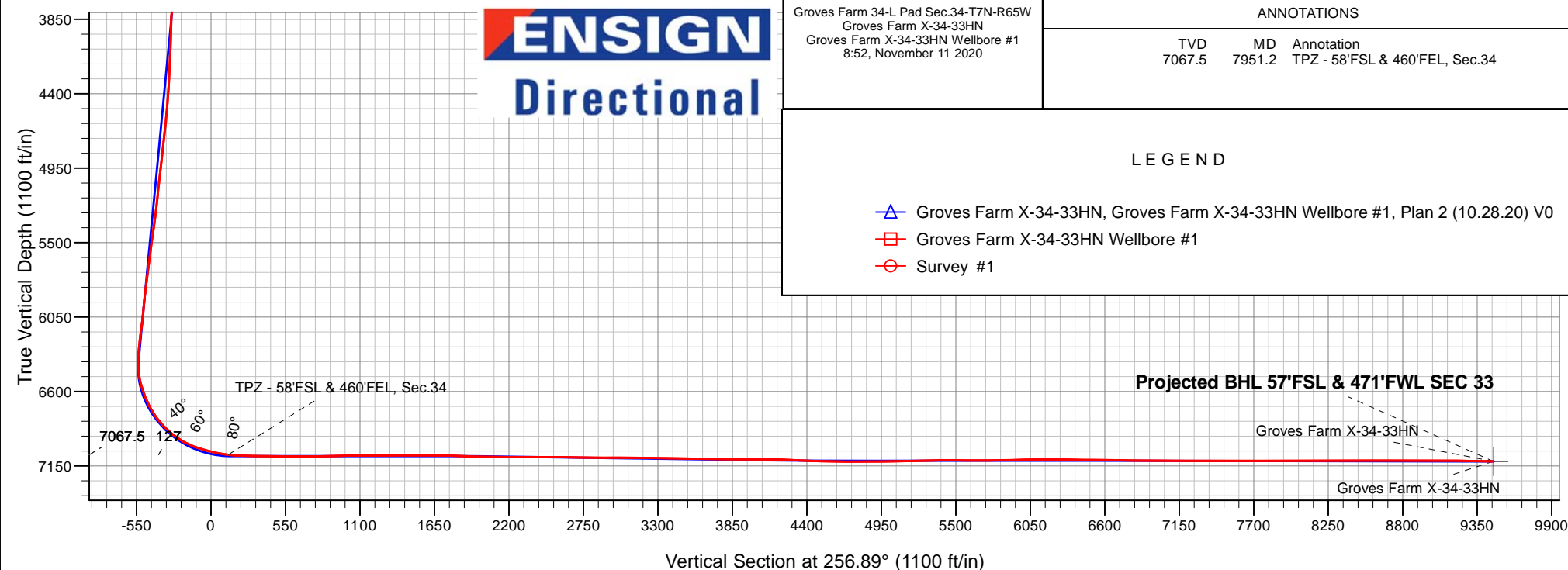
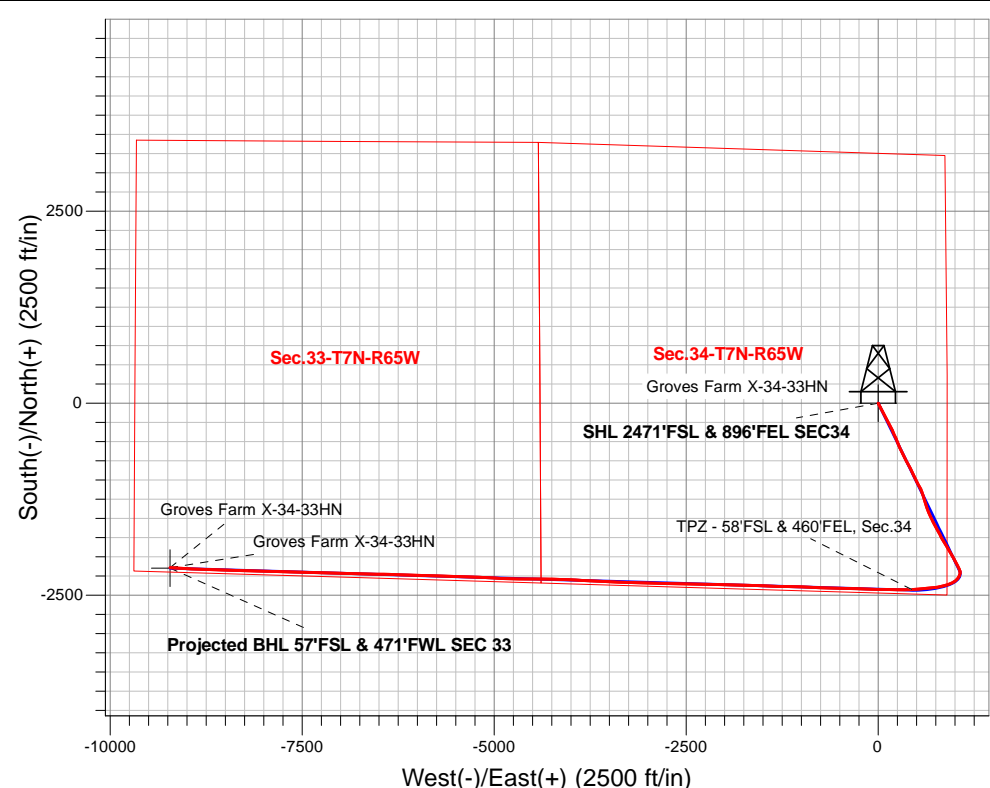
Ground Elevation: 4844.0

+N/-S	+E/-W	Northing	Easting	Latitude	Longitude	Slot
0.0	0.0	1437020.74	3238239.13	40.529862	-104.642940	
Original Well Elev WELL @ 4867.0ft (Original Well Elev)						

## FINAL SURVEY

**Projected Bottom Hole Location**

**17,616'MD 7116'TVD 2142'S & 9223'W of SHL**  
**89.34 degree Incl @ 273.55 degree AZM**





# **Bayswater Exploration & Production, LLC**

**SEC.34-T7N-R65W**

**Groves Farm 34-L Pad Sec.34-T7N-R65W**

**Groves Farm X-34-33HN**

**Groves Farm X-34-33HN Wellbore #1**

**Survey: Survey #1**

## **Standard Survey Report**

**11 November, 2020**



**BAYSWATER**  
**EXPLORATION & PRODUCTION, LLC**

<b>Company:</b>	Bayswater Exploration & Production, LLC	<b>Local Co-ordinate Reference:</b>	Well Groves Farm X-34-33HN
<b>Project:</b>	SEC.34-T7N-R65W	<b>TVD Reference:</b>	WELL @ 4867.0ft (Original Well Elev)
<b>Site:</b>	Groves Farm 34-L Pad Sec.34-T7N-R65W	<b>MD Reference:</b>	WELL @ 4867.0ft (Original Well Elev)
<b>Well:</b>	Groves Farm X-34-33HN	<b>North Reference:</b>	True
<b>Wellbore:</b>	Groves Farm X-34-33HN Wellbore #1	<b>Survey Calculation Method:</b>	Minimum Curvature
<b>Design:</b>	Groves Farm X-34-33HN Wellbore #1	<b>Database:</b>	US_EDM

<b>Project</b>	SEC.34-T7N-R65W, Weld County, CO		
<b>Map System:</b>	US State Plane 1983	<b>System Datum:</b>	Mean Sea Level
<b>Geo Datum:</b>	North American Datum 1983		Using Well Reference Point
<b>Map Zone:</b>	Colorado Northern Zone		Using geodetic scale factor

Site	Groves Farm 34-L Pad Sec.34-T7N-R65W				
Site Position:		Northing:	1,437,170.88 usft	Latitude:	40.530274
From:	Lat/Long	Easting:	3,238,241.57 usft	Longitude:	-104.642926
Position Uncertainty:	0.0 ft	Slot Radius:	13-3/16 "	Grid Convergence:	0.55 °

Well	Groves Farm X-34-33HN					
Well Position	+N/-S	0.0 ft	Northing:	1,437,020.74 usft	Latitude:	40.529862
	+E/-W	0.0 ft	Easting:	3,238,239.13 usft	Longitude:	-104.642940
Position Uncertainty		0.0 ft	Wellhead Elevation:	0.0 ft	Ground Level:	4,844.0 ft

<b>Wellbore</b>	Groves Farm X-34-33HN Wellbore #1				
<b>Magnetics</b>	<b>Model Name</b>	<b>Sample Date</b>	<b>Declination (°)</b>	<b>Dip Angle (°)</b>	<b>Field Strength (nT)</b>
	HDGM	10/14/2020	7.77	66.85	52,073

<b>Design</b>	Groves Farm X-34-33HN Wellbore #1				
<b>Audit Notes:</b>					
<b>Version:</b>	1.0	<b>Phase:</b>	ACTUAL	<b>Tie On Depth:</b>	0.0
<b>Vertical Section:</b>	<b>Depth From (TVD) (ft)</b>	<b>+N/-S (ft)</b>	<b>+E/-W (ft)</b>	<b>Direction (°)</b>	
	0.0	0.0	0.0	256.89	

<b>Survey Program</b>	<b>Date</b>	11/11/2020			
<b>From (ft)</b>	<b>To (ft)</b>	<b>Survey (Wellbore)</b>	<b>Tool Name</b>	<b>Description</b>	
207.0	17,616.0	Survey #1 (Groves Farm X-34-33HN Wellb	MWD	MWD - Standard	

<b>Survey</b>										
<b>Measured Depth (ft)</b>	<b>Inclination (°)</b>	<b>Azimuth (°)</b>	<b>Vertical Depth (ft)</b>	<b>+N/-S (ft)</b>	<b>+E/-W (ft)</b>	<b>Vertical Section (ft)</b>	<b>Dogleg Rate (°/100usft)</b>	<b>Build Rate (°/100usft)</b>	<b>Turn Rate (°/100usft)</b>	
0.0	0.00	0.00	0.0	0.0	0.0	0.0	0.00	0.00	0.00	
207.0	0.70	166.15	207.0	-1.2	0.3	0.0	0.34	0.34	0.00	
296.0	1.67	165.09	296.0	-3.0	0.8	-0.1	1.09	1.09	-1.19	
385.0	2.90	158.59	384.9	-6.4	1.9	-0.4	1.41	1.38	-7.30	
475.0	5.80	153.49	474.6	-12.5	4.8	-1.8	3.25	3.22	-5.67	
564.0	6.86	154.90	563.1	-21.4	9.0	-4.0	1.20	1.19	1.58	
653.0	9.50	151.38	651.2	-32.6	14.8	-7.0	3.02	2.97	-3.96	
743.0	10.29	151.38	739.8	-46.2	22.2	-11.2	0.88	0.88	0.00	
833.0	13.63	154.72	827.9	-62.9	30.6	-15.5	3.79	3.71	3.71	
923.0	14.95	152.44	915.1	-82.8	40.5	-20.7	1.59	1.47	-2.53	

<b>Company:</b>	Bayswater Exploration & Production, LLC	<b>Local Co-ordinate Reference:</b>	Well Groves Farm X-34-33HN
<b>Project:</b>	SEC.34-T7N-R65W	<b>TVD Reference:</b>	WELL @ 4867.0ft (Original Well Elev)
<b>Site:</b>	Groves Farm 34-L Pad Sec.34-T7N-R65W	<b>MD Reference:</b>	WELL @ 4867.0ft (Original Well Elev)
<b>Well:</b>	Groves Farm X-34-33HN	<b>North Reference:</b>	True
<b>Wellbore:</b>	Groves Farm X-34-33HN Wellbore #1	<b>Survey Calculation Method:</b>	Minimum Curvature
<b>Design:</b>	Groves Farm X-34-33HN Wellbore #1	<b>Database:</b>	US_EDM

Survey									
Measured Depth (ft)	Inclination (°)	Azimuth (°)	Vertical Depth (ft)	+N/-S (ft)	+E/-W (ft)	Vertical Section (ft)	Dogleg Rate (°/100usft)	Build Rate (°/100usft)	Turn Rate (°/100usft)
1,013.0	18.03	153.32	1,001.4	-105.5	52.1	-26.8	3.43	3.42	0.98
1,102.0	19.52	152.26	1,085.6	-131.0	65.2	-33.8	1.72	1.67	-1.19
1,191.0	21.37	151.38	1,169.0	-158.4	79.9	-41.9	2.11	2.08	-0.99
1,280.0	22.34	151.21	1,251.6	-187.4	95.8	-50.8	1.09	1.09	-0.19
1,370.0	23.48	152.61	1,334.5	-218.3	112.3	-59.9	1.40	1.27	1.56
1,460.0	23.21	152.44	1,417.2	-250.0	128.8	-68.7	0.31	-0.30	-0.19
1,490.0	23.39	151.91	1,444.7	-260.5	134.3	-71.7	0.92	0.60	-1.77
1,576.0	23.74	151.03	1,523.5	-290.7	150.7	-80.9	0.58	0.41	-1.02
1,666.0	23.92	154.20	1,605.9	-323.0	167.5	-89.8	1.44	0.20	3.52
1,756.0	24.09	155.60	1,688.1	-356.1	183.0	-97.4	0.66	0.19	1.56
1,845.0	23.48	156.66	1,769.5	-388.9	197.5	-104.1	0.84	-0.69	1.19
1,934.0	23.48	156.13	1,851.2	-421.4	211.7	-110.6	0.24	0.00	-0.60
2,024.0	22.77	157.18	1,933.9	-453.9	225.7	-116.9	0.91	-0.79	1.17
2,113.0	22.51	156.48	2,016.1	-485.4	239.2	-122.9	0.42	-0.29	-0.79
2,203.0	22.16	157.18	2,099.3	-516.8	252.7	-128.8	0.49	-0.39	0.78
2,292.0	23.21	156.83	2,181.4	-548.4	266.1	-134.7	1.19	1.18	-0.39
2,381.0	23.57	156.13	2,263.1	-580.8	280.2	-141.1	0.51	0.40	-0.79
2,470.0	23.04	154.90	2,344.9	-612.8	294.8	-148.1	0.81	-0.60	-1.38
2,560.0	22.34	154.90	2,427.9	-644.3	309.5	-155.3	0.78	-0.78	0.00
2,649.0	23.48	152.26	2,509.9	-675.3	324.9	-163.3	1.72	1.28	-2.97
2,739.0	23.04	152.61	2,592.6	-706.8	341.4	-172.1	0.51	-0.49	0.39
2,828.0	22.42	150.86	2,674.6	-737.1	357.6	-181.1	1.03	-0.70	-1.97
2,917.0	23.13	152.09	2,756.7	-767.4	374.1	-190.3	0.96	0.80	1.38
3,030.0	23.48	152.79	2,860.5	-807.0	394.8	-201.4	0.39	0.31	0.62
3,119.0	22.77	151.56	2,942.3	-837.9	411.1	-210.3	0.96	-0.80	-1.38
3,209.0	23.92	154.20	3,025.0	-869.6	427.3	-218.9	1.73	1.28	2.93
3,298.0	22.95	155.07	3,106.6	-901.6	442.5	-226.4	1.16	-1.09	0.98
3,388.0	23.74	154.20	3,189.3	-933.9	457.8	-234.0	0.96	0.88	-0.97
3,477.0	24.89	154.72	3,270.4	-966.9	473.6	-241.9	1.31	1.29	0.58
3,566.0	23.74	154.02	3,351.5	-1,000.0	489.4	-249.8	1.33	-1.29	-0.79
3,656.0	21.54	152.79	3,434.5	-1,030.9	504.9	-257.9	2.50	-2.44	-1.37
3,746.0	22.25	152.44	3,518.0	-1,060.7	520.3	-266.2	0.80	0.79	-0.39
3,836.0	21.19	151.21	3,601.6	-1,090.1	536.1	-274.8	1.28	-1.18	-1.37
3,925.0	21.28	154.02	3,684.6	-1,118.7	550.9	-282.7	1.15	0.10	3.16
4,014.0	23.30	158.59	3,767.0	-1,149.6	564.4	-288.9	2.99	2.27	5.13
4,103.0	25.32	162.46	3,848.1	-1,184.2	576.6	-292.9	2.89	2.27	4.35
4,193.0	25.32	162.63	3,929.4	-1,220.9	588.1	-295.8	0.08	0.00	0.19
4,283.0	25.68	162.98	4,010.7	-1,257.9	599.5	-298.6	0.43	0.40	0.39
4,373.0	25.59	163.34	4,091.8	-1,295.2	610.8	-301.1	0.20	-0.10	0.40
4,462.0	25.59	163.16	4,172.1	-1,332.0	621.9	-303.5	0.09	0.00	-0.20
4,551.0	25.94	159.65	4,252.2	-1,368.6	634.2	-307.2	1.76	0.39	-3.94
4,641.0	24.71	158.59	4,333.6	-1,404.6	648.0	-312.4	1.46	-1.37	-1.18
4,731.0	23.48	157.54	4,415.7	-1,438.7	661.7	-318.1	1.45	-1.37	-1.17
4,821.0	23.74	155.07	4,498.2	-1,471.7	676.2	-324.7	1.14	0.29	-2.74

<b>Company:</b>	Bayswater Exploration & Production, LLC	<b>Local Co-ordinate Reference:</b>	Well Groves Farm X-34-33HN
<b>Project:</b>	SEC.34-T7N-R65W	<b>TVD Reference:</b>	WELL @ 4867.0ft (Original Well Elev)
<b>Site:</b>	Groves Farm 34-L Pad Sec.34-T7N-R65W	<b>MD Reference:</b>	WELL @ 4867.0ft (Original Well Elev)
<b>Well:</b>	Groves Farm X-34-33HN	<b>North Reference:</b>	True
<b>Wellbore:</b>	Groves Farm X-34-33HN Wellbore #1	<b>Survey Calculation Method:</b>	Minimum Curvature
<b>Design:</b>	Groves Farm X-34-33HN Wellbore #1	<b>Database:</b>	US_EDM

Survey									
Measured Depth (ft)	Inclination (°)	Azimuth (°)	Vertical Depth (ft)	+N/-S (ft)	+E/-W (ft)	Vertical Section (ft)	Dogleg Rate (°/100usft)	Build Rate (°/100usft)	Turn Rate (°/100usft)
4,911.0	22.16	154.55	4,581.1	-1,503.4	691.1	-332.0	1.77	-1.76	-0.58
5,000.0	24.45	153.49	4,662.8	-1,535.1	706.5	-339.9	2.62	2.57	-1.19
5,089.0	23.74	151.73	4,744.0	-1,567.3	723.2	-348.8	1.13	-0.80	-1.98
5,179.0	21.81	151.21	4,827.0	-1,598.0	739.9	-358.1	2.16	-2.14	-0.58
5,268.0	23.48	151.73	4,909.2	-1,628.1	756.2	-367.2	1.89	1.88	0.58
5,358.0	23.92	151.38	4,991.6	-1,659.9	773.5	-376.8	0.51	0.49	-0.39
5,447.0	21.63	150.33	5,073.6	-1,690.0	790.2	-386.3	2.61	-2.57	-1.18
5,536.0	23.39	153.67	5,155.8	-1,720.1	806.2	-395.0	2.44	1.98	3.75
5,626.0	23.74	151.91	5,238.3	-1,752.0	822.6	-403.7	0.87	0.39	-1.96
5,715.0	24.18	149.98	5,319.7	-1,783.6	840.2	-413.7	1.01	0.49	-2.17
5,805.0	22.95	146.99	5,402.2	-1,814.3	859.0	-425.0	1.91	-1.37	-3.32
5,895.0	23.92	149.10	5,484.7	-1,844.7	877.9	-436.6	1.42	1.08	2.34
5,984.0	22.25	148.04	5,566.6	-1,874.5	896.1	-447.5	1.93	-1.88	-1.19
6,074.0	23.48	149.98	5,649.5	-1,904.4	914.1	-458.2	1.60	1.37	2.16
6,164.0	22.25	148.04	5,732.5	-1,934.4	932.1	-469.0	1.60	-1.37	-2.16
6,254.0	23.39	151.21	5,815.4	-1,964.5	949.7	-479.3	1.86	1.27	3.52
6,343.0	21.54	149.27	5,897.7	-1,994.1	966.6	-489.0	2.24	-2.08	-2.18
6,433.0	23.13	152.26	5,980.9	-2,023.9	983.2	-498.5	2.17	1.77	3.32
6,523.0	22.86	153.67	6,063.8	-2,055.2	999.2	-506.9	0.68	-0.30	1.57
6,612.0	25.06	152.44	6,145.1	-2,087.4	1,015.6	-515.6	2.53	2.47	-1.38
6,702.0	24.09	149.80	6,226.9	-2,120.2	1,033.7	-525.7	1.63	-1.08	-2.93
6,792.0	23.21	155.95	6,309.4	-2,152.3	1,050.1	-534.5	2.91	-0.98	6.83
6,881.0	21.63	165.45	6,391.7	-2,184.2	1,061.4	-538.3	4.44	-1.78	10.67
6,971.0	23.92	187.24	6,474.8	-2,218.4	1,063.3	-532.3	9.65	2.54	24.21
7,061.0	23.83	207.28	6,557.3	-2,252.7	1,052.6	-514.2	8.97	-0.10	22.27
7,150.0	26.64	218.18	6,637.8	-2,284.4	1,032.0	-486.9	6.09	3.16	12.25
7,240.0	29.90	229.78	6,717.1	-2,314.8	1,002.4	-451.2	7.08	3.62	12.89
7,329.0	37.81	243.32	6,791.1	-2,341.5	961.0	-404.8	12.24	8.89	15.21
7,418.0	43.79	254.22	6,858.5	-2,362.1	906.8	-347.4	10.43	6.72	12.25
7,508.0	50.74	254.74	6,919.5	-2,379.8	843.2	-281.3	7.73	7.72	0.58
7,598.0	61.03	261.07	6,970.0	-2,395.1	770.4	-207.0	12.82	11.43	7.03
7,687.0	69.56	264.06	7,007.2	-2,405.5	690.3	-126.6	10.06	9.58	3.36
7,777.0	75.89	264.76	7,033.9	-2,413.9	604.8	-41.5	7.07	7.03	0.78
7,866.0	78.09	265.64	7,053.9	-2,421.1	518.4	44.3	2.65	2.47	0.99
7,951.2	83.47	266.99	7,067.5	-2,426.5	434.5	127.2	6.51	6.31	1.59
TPZ - 58'FSL & 460'FEL, Sec.34									
7,955.0	83.71	267.05	7,068.0	-2,426.7	430.8	131.0	6.51	6.32	1.56
8,044.0	88.37	269.68	7,074.1	-2,429.2	342.0	217.9	6.01	5.24	2.96
8,134.0	89.25	269.51	7,076.0	-2,429.9	252.1	305.7	1.00	0.98	-0.19
8,223.0	88.99	271.62	7,077.4	-2,429.0	163.1	392.2	2.39	-0.29	2.37
8,313.0	88.99	271.44	7,078.9	-2,426.6	73.1	479.2	0.20	0.00	-0.20
8,402.0	89.43	271.62	7,080.2	-2,424.2	-15.8	565.3	0.53	0.49	0.20
8,491.0	89.25	270.91	7,081.2	-2,422.2	-104.8	651.5	0.82	-0.20	-0.80

<b>Company:</b>	Bayswater Exploration & Production, LLC	<b>Local Co-ordinate Reference:</b>	Well Groves Farm X-34-33HN
<b>Project:</b>	SEC.34-T7N-R65W	<b>TVD Reference:</b>	WELL @ 4867.0ft (Original Well Elev)
<b>Site:</b>	Groves Farm 34-L Pad Sec.34-T7N-R65W	<b>MD Reference:</b>	WELL @ 4867.0ft (Original Well Elev)
<b>Well:</b>	Groves Farm X-34-33HN	<b>North Reference:</b>	True
<b>Wellbore:</b>	Groves Farm X-34-33HN Wellbore #1	<b>Survey Calculation Method:</b>	Minimum Curvature
<b>Design:</b>	Groves Farm X-34-33HN Wellbore #1	<b>Database:</b>	US_EDM

Survey									
Measured Depth (ft)	Inclination (°)	Azimuth (°)	Vertical Depth (ft)	+N/-S (ft)	+E/-W (ft)	Vertical Section (ft)	Dogleg Rate (°/100usft)	Build Rate (°/100usft)	Turn Rate (°/100usft)
8,580.0	91.01	272.50	7,081.0	-2,419.6	-193.7	737.6	2.66	1.98	1.79
8,670.0	92.07	272.32	7,078.6	-2,415.8	-283.6	824.3	1.19	1.18	-0.20
8,759.0	91.19	271.44	7,076.0	-2,412.9	-372.5	910.2	1.40	-0.99	-0.99
8,849.0	91.63	271.27	7,073.8	-2,410.8	-462.5	997.3	0.52	0.49	-0.19
8,938.0	89.87	271.27	7,072.7	-2,408.8	-551.5	1,083.5	1.98	-1.98	0.00
9,027.0	88.90	270.21	7,073.6	-2,407.6	-640.4	1,169.9	1.61	-1.09	-1.19
9,116.0	90.84	272.67	7,073.8	-2,405.4	-729.4	1,256.1	3.52	2.18	2.76
9,206.0	90.92	272.85	7,072.4	-2,401.1	-819.3	1,342.6	0.22	0.09	0.20
9,295.0	90.40	273.20	7,071.4	-2,396.4	-908.2	1,428.1	0.70	-0.58	0.39
9,384.0	89.60	271.62	7,071.4	-2,392.6	-997.1	1,513.9	1.99	-0.90	-1.78
9,474.0	89.43	271.09	7,072.2	-2,390.5	-1,087.1	1,601.0	0.62	-0.19	-0.59
9,564.0	90.04	270.74	7,072.6	-2,389.1	-1,177.0	1,688.3	0.78	0.68	-0.39
9,653.0	88.11	271.79	7,074.0	-2,387.1	-1,266.0	1,774.5	2.47	-2.17	1.18
9,742.0	88.11	272.15	7,077.0	-2,384.0	-1,354.9	1,860.4	0.40	0.00	0.40
9,830.0	87.85	271.27	7,080.1	-2,381.4	-1,442.8	1,945.4	1.04	-0.30	-1.00
9,920.0	88.72	273.02	7,082.8	-2,378.1	-1,532.7	2,032.2	2.17	0.97	1.94
10,009.0	89.78	272.32	7,083.9	-2,373.9	-1,621.6	2,117.8	1.43	1.19	-0.79
10,099.0	89.69	271.79	7,084.3	-2,370.7	-1,711.5	2,204.7	0.60	-0.10	-0.59
10,188.0	89.60	271.62	7,084.9	-2,368.0	-1,800.5	2,290.7	0.22	-0.10	-0.19
10,277.0	90.04	271.09	7,085.2	-2,365.9	-1,889.5	2,376.9	0.77	0.49	-0.60
10,367.0	90.31	270.74	7,084.9	-2,364.5	-1,979.5	2,464.2	0.49	0.30	-0.39
10,456.0	89.25	271.44	7,085.2	-2,362.8	-2,068.4	2,550.5	1.43	-1.19	0.79
10,545.0	89.96	271.27	7,085.8	-2,360.7	-2,157.4	2,636.7	0.82	0.80	-0.19
10,634.0	88.81	271.62	7,086.8	-2,358.4	-2,246.4	2,722.8	1.35	-1.29	0.39
10,723.0	89.25	270.91	7,088.3	-2,356.5	-2,335.3	2,809.0	0.94	0.49	-0.80
10,812.0	89.25	270.56	7,089.5	-2,355.3	-2,424.3	2,895.4	0.39	0.00	-0.39
10,901.0	89.69	270.56	7,090.3	-2,354.5	-2,513.3	2,981.9	0.49	0.49	0.00
10,991.0	90.13	270.21	7,090.4	-2,353.9	-2,603.3	3,069.4	0.62	0.49	-0.39
11,081.0	90.13	272.15	7,090.2	-2,352.0	-2,693.3	3,156.6	2.16	0.00	2.16
11,170.0	88.99	270.91	7,090.9	-2,349.6	-2,782.2	3,242.7	1.89	-1.28	-1.39
11,260.0	89.69	272.85	7,092.0	-2,346.7	-2,872.2	3,329.7	2.29	0.78	2.16
11,349.0	88.64	271.97	7,093.3	-2,342.9	-2,961.1	3,415.4	1.54	-1.18	-0.99
11,438.0	88.29	271.09	7,095.6	-2,340.6	-3,050.0	3,501.5	1.06	-0.39	-0.99
11,527.0	89.16	272.32	7,097.6	-2,337.9	-3,139.0	3,587.5	1.69	0.98	1.38
11,616.0	89.25	272.15	7,098.9	-2,334.4	-3,227.9	3,673.3	0.22	0.10	-0.19
11,706.0	89.43	271.79	7,099.9	-2,331.4	-3,317.8	3,760.2	0.45	0.20	-0.40
11,795.0	89.78	271.09	7,100.5	-2,329.1	-3,406.8	3,846.3	0.88	0.39	-0.79
11,885.0	89.69	272.32	7,100.9	-2,326.4	-3,496.8	3,933.4	1.37	-0.10	1.37
11,974.0	89.87	272.15	7,101.3	-2,323.0	-3,585.7	4,019.2	0.28	0.20	-0.19
12,063.0	89.60	273.38	7,101.7	-2,318.7	-3,674.6	4,104.8	1.41	-0.30	1.38
12,153.0	88.72	273.38	7,103.0	-2,313.4	-3,764.4	4,191.1	0.98	-0.98	0.00
12,243.0	87.05	273.20	7,106.3	-2,308.2	-3,854.2	4,277.3	1.87	-1.86	-0.20
12,332.0	87.85	273.20	7,110.3	-2,303.2	-3,943.0	4,362.7	0.90	0.90	0.00
12,421.0	88.72	273.20	7,112.9	-2,298.3	-4,031.8	4,448.1	0.98	0.98	0.00

<b>Company:</b>	Bayswater Exploration & Production, LLC	<b>Local Co-ordinate Reference:</b>	Well Groves Farm X-34-33HN
<b>Project:</b>	SEC.34-T7N-R65W	<b>TVD Reference:</b>	WELL @ 4867.0ft (Original Well Elev)
<b>Site:</b>	Groves Farm 34-L Pad Sec.34-T7N-R65W	<b>MD Reference:</b>	WELL @ 4867.0ft (Original Well Elev)
<b>Well:</b>	Groves Farm X-34-33HN	<b>North Reference:</b>	True
<b>Wellbore:</b>	Groves Farm X-34-33HN Wellbore #1	<b>Survey Calculation Method:</b>	Minimum Curvature
<b>Design:</b>	Groves Farm X-34-33HN Wellbore #1	<b>Database:</b>	US_EDM

Survey									
Measured Depth (ft)	Inclination (°)	Azimuth (°)	Vertical Depth (ft)	+N/-S (ft)	+E/-W (ft)	Vertical Section (ft)	Dogleg Rate (°/100usft)	Build Rate (°/100usft)	Turn Rate (°/100usft)
12,511.0	88.20	271.79	7,115.4	-2,294.4	-4,121.7	4,534.7	1.67	-0.58	-1.57
12,600.0	88.99	271.62	7,117.5	-2,291.7	-4,210.6	4,620.7	0.91	0.89	-0.19
12,689.0	89.25	270.21	7,118.9	-2,290.3	-4,299.6	4,707.0	1.61	0.29	-1.58
12,778.0	90.57	270.21	7,119.0	-2,290.0	-4,388.6	4,793.7	1.48	1.48	0.00
12,868.0	90.48	270.39	7,118.2	-2,289.5	-4,478.6	4,881.2	0.22	-0.10	0.20
12,958.0	90.40	269.33	7,117.5	-2,289.7	-4,568.6	4,968.9	1.18	-0.09	-1.18
13,048.0	91.63	270.74	7,115.9	-2,289.7	-4,658.6	5,056.5	2.08	1.37	1.57
13,137.0	91.28	271.79	7,113.7	-2,287.7	-4,747.5	5,142.7	1.24	-0.39	1.18
13,227.0	91.19	272.32	7,111.7	-2,284.5	-4,837.4	5,229.5	0.60	-0.10	0.59
13,316.0	91.98	272.15	7,109.3	-2,281.0	-4,926.3	5,315.3	0.91	0.89	-0.19
13,405.0	89.87	273.55	7,107.8	-2,276.6	-5,015.2	5,400.9	2.85	-2.37	1.57
13,495.0	89.52	272.85	7,108.3	-2,271.6	-5,105.1	5,487.3	0.87	-0.39	-0.78
13,584.0	89.52	272.67	7,109.1	-2,267.3	-5,193.9	5,572.9	0.20	0.00	-0.20
13,673.0	89.87	272.32	7,109.5	-2,263.4	-5,282.9	5,658.6	0.56	0.39	-0.39
13,762.0	90.31	271.97	7,109.4	-2,260.1	-5,371.8	5,744.4	0.63	0.49	-0.39
13,852.0	90.66	271.97	7,108.6	-2,257.0	-5,461.7	5,831.3	0.39	0.39	0.00
13,942.0	91.71	271.62	7,106.8	-2,254.2	-5,551.7	5,918.3	1.23	1.17	-0.39
14,031.0	91.63	270.74	7,104.2	-2,252.3	-5,640.6	6,004.5	0.99	-0.09	-0.99
14,120.0	90.75	271.79	7,102.3	-2,250.4	-5,729.6	6,090.7	1.54	-0.99	1.18
14,209.0	90.48	271.79	7,101.4	-2,247.6	-5,818.5	6,176.7	0.30	-0.30	0.00
14,298.0	89.08	271.97	7,101.7	-2,244.7	-5,907.5	6,262.7	1.59	-1.57	0.20
14,388.0	88.81	272.32	7,103.4	-2,241.3	-5,997.4	6,349.5	0.49	-0.30	0.39
14,477.0	88.90	272.32	7,105.2	-2,237.7	-6,086.3	6,435.3	0.10	0.10	0.00
14,567.0	89.34	271.97	7,106.5	-2,234.3	-6,176.2	6,522.1	0.62	0.49	-0.39
14,656.0	89.43	271.44	7,107.5	-2,231.7	-6,265.2	6,608.1	0.60	0.10	-0.60
14,745.0	89.43	270.91	7,108.4	-2,229.8	-6,354.2	6,694.4	0.60	0.00	-0.60
14,835.0	89.43	270.39	7,109.3	-2,228.8	-6,444.2	6,781.8	0.58	0.00	-0.58
14,925.0	89.43	271.62	7,110.2	-2,227.2	-6,534.1	6,869.0	1.37	0.00	1.37
15,014.0	89.78	271.09	7,110.8	-2,225.1	-6,623.1	6,955.2	0.71	0.39	-0.60
15,103.0	89.60	270.74	7,111.3	-2,223.7	-6,712.1	7,041.6	0.44	-0.20	-0.39
15,193.0	90.22	270.56	7,111.4	-2,222.7	-6,802.1	7,129.0	0.72	0.69	-0.20
15,282.0	89.87	272.67	7,111.3	-2,220.2	-6,891.0	7,215.0	2.40	-0.39	2.37
15,371.0	89.43	271.44	7,111.9	-2,217.0	-6,980.0	7,300.9	1.47	-0.49	-1.38
15,460.0	89.08	271.09	7,113.0	-2,215.0	-7,069.0	7,387.1	0.56	-0.39	-0.39
15,550.0	90.48	273.38	7,113.4	-2,211.5	-7,158.9	7,473.9	2.98	1.56	2.54
15,640.0	90.66	272.85	7,112.5	-2,206.6	-7,248.7	7,560.3	0.62	0.20	-0.59
15,730.0	89.96	271.97	7,112.0	-2,202.9	-7,338.7	7,647.1	1.25	-0.78	-0.98
15,819.0	89.60	271.27	7,112.3	-2,200.3	-7,427.6	7,733.1	0.88	-0.40	-0.79
15,909.0	90.22	271.09	7,112.5	-2,198.5	-7,517.6	7,820.3	0.72	0.69	-0.20
15,998.0	89.08	270.04	7,113.0	-2,197.6	-7,606.6	7,906.8	1.74	-1.28	-1.18
16,087.0	90.04	270.91	7,113.7	-2,196.9	-7,695.6	7,993.3	1.46	1.08	0.98
16,177.0	90.31	270.74	7,113.4	-2,195.6	-7,785.6	8,080.7	0.35	0.30	-0.19
16,266.0	90.22	271.97	7,113.0	-2,193.5	-7,874.6	8,166.8	1.39	-0.10	1.38



<b>Company:</b>	Bayswater Exploration & Production, LLC	<b>Local Co-ordinate Reference:</b>	Well Groves Farm X-34-33HN
<b>Project:</b>	SEC.34-T7N-R65W	<b>TVD Reference:</b>	WELL @ 4867.0ft (Original Well Elev)
<b>Site:</b>	Groves Farm 34-L Pad Sec.34-T7N-R65W	<b>MD Reference:</b>	WELL @ 4867.0ft (Original Well Elev)
<b>Well:</b>	Groves Farm X-34-33HN	<b>North Reference:</b>	True
<b>Wellbore:</b>	Groves Farm X-34-33HN Wellbore #1	<b>Survey Calculation Method:</b>	Minimum Curvature
<b>Design:</b>	Groves Farm X-34-33HN Wellbore #1	<b>Database:</b>	US_EDM

Survey										
Measured Depth (ft)	Inclination (°)	Azimuth (°)	Vertical Depth (ft)	+N/-S (ft)	+E/-W (ft)	Vertical Section (ft)	Dogleg Rate (°/100usft)	Build Rate (°/100usft)	Turn Rate (°/100usft)	
16,365.0	90.84	272.15	7,112.1	-2,189.9	-7,973.5	8,262.4	0.65	0.63	0.18	
16,444.0	90.57	272.15	7,111.1	-2,186.9	-8,052.4	8,338.6	0.34	-0.34	0.00	
16,534.0	90.75	271.62	7,110.1	-2,184.0	-8,142.4	8,425.5	0.62	0.20	-0.59	
16,623.0	89.08	272.15	7,110.2	-2,181.1	-8,231.3	8,511.5	1.97	-1.88	0.60	
16,713.0	90.13	271.97	7,110.8	-2,177.8	-8,321.3	8,598.4	1.18	1.17	-0.20	
16,802.0	90.04	271.09	7,110.7	-2,175.4	-8,410.2	8,684.5	0.99	-0.10	-0.99	
16,892.0	89.69	269.33	7,110.9	-2,175.1	-8,500.2	8,772.0	1.99	-0.39	-1.96	
16,981.0	90.57	272.15	7,110.7	-2,174.0	-8,589.2	8,858.4	3.32	0.99	3.17	
17,071.0	91.01	272.67	7,109.5	-2,170.2	-8,679.1	8,945.1	0.76	0.49	0.58	
17,159.0	89.69	273.38	7,108.9	-2,165.5	-8,767.0	9,029.7	1.70	-1.50	0.81	
17,248.0	89.52	272.85	7,109.6	-2,160.7	-8,855.8	9,115.1	0.63	-0.19	-0.60	
17,338.0	88.46	272.32	7,111.1	-2,156.6	-8,945.7	9,201.8	1.32	-1.18	-0.59	
17,427.0	88.72	272.85	7,113.3	-2,152.6	-9,034.6	9,287.4	0.66	0.29	0.60	
17,548.0	89.34	273.55	7,115.4	-2,145.9	-9,155.4	9,403.5	0.77	0.51	0.58	
17,616.0	89.34	273.55	7,116.2	-2,141.7	-9,223.3	9,468.7	0.00	0.00	0.00	

Design Targets										
Target Name	Dip Angle (°)	Dip Dir. (°)	TVD (ft)	+N/-S (ft)	+E/-W (ft)	Northing (usft)	Easting (usft)	Latitude	Longitude	
- hit/miss target										
- Shape										
SHL 2471'FSL & 896'FE	0.00	0.00	0.0	0.0	0.0	1,437,020.74	3,238,239.13	40.529862	-104.642940	
- survey hits target center										
- Point										
BHL 50'FSL & 470'FWL	0.00	0.00	7,117.0	-2,148.5	-9,224.1	1,434,783.28	3,229,036.53	40.523960	-104.676119	
- survey misses target center by 6.9ft at 17616.0ft MD (7116.2 TVD, -2141.7 N, -9223.3 E)										
- Point										

Survey Annotations					
Measured Depth (ft)	Vertical Depth (ft)	Local Coordinates			
		+N/-S (ft)	+E/-W (ft)	Comment	
7,951.2	7,067.5	-2,426.5	434.5	TPZ - 58'FSL & 460'FEL, Sec.34	

Checked By: _____	Approved By: _____	Date: _____
-------------------	--------------------	-------------