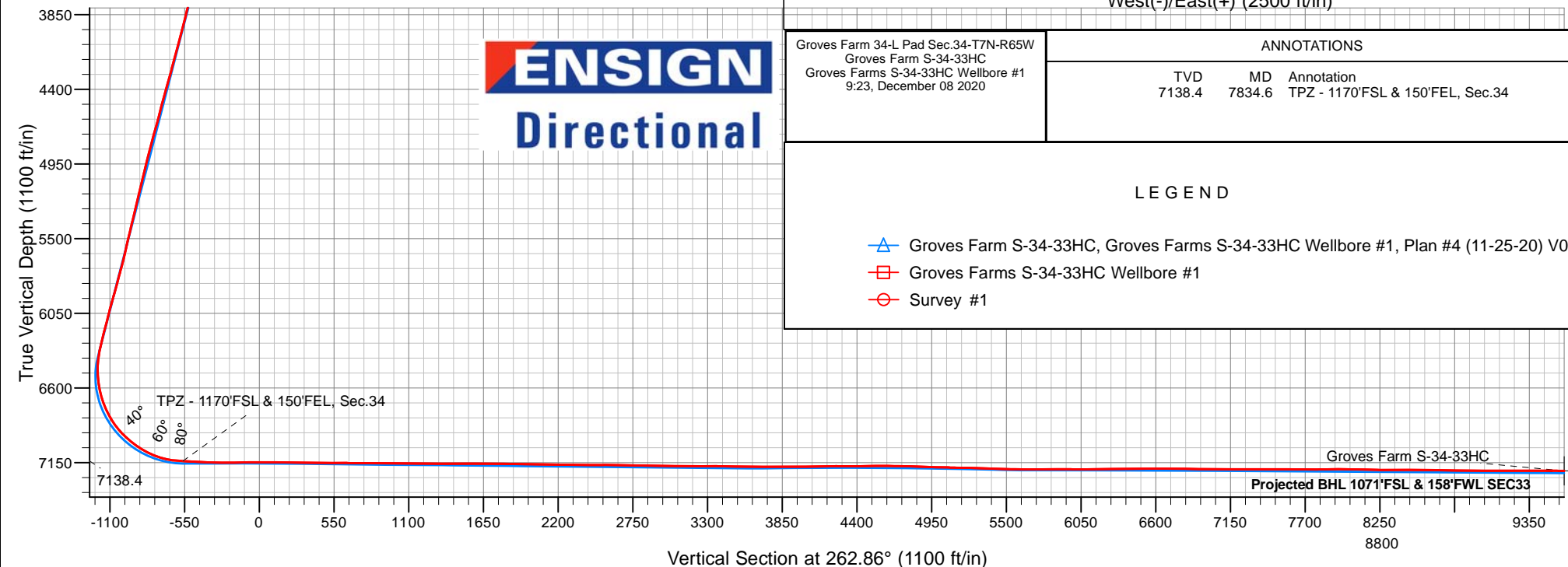
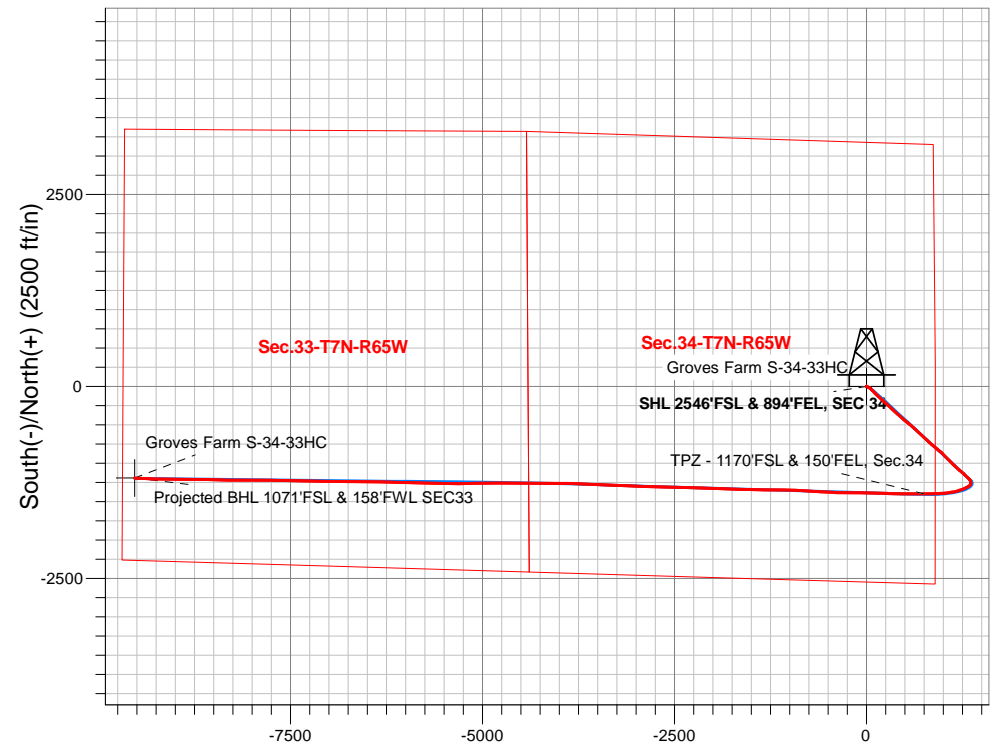


Bayswater Exploration & Production, LLC

Well Name: Groves Farm S-34-33HC
 Surface Location: Groves Farm 34-L Pad Sec.34-T7N-R65W
 North American Datum 1983 , US State Plane 1983, Colorado Northern Zone
 Ground Elevation: 4844.0
 +N/-S +E/-W Northing Easting Latitude Longitude Slot
 0.0 0.0 1437095.80 3238240.35 40.530068 -104.642933
 Original Well Elev WELL @ 4867.0ft (Original Well Elev)

FINAL SURVEY

Projected Bottom Hole Location
18115'MD 7211'TVD 1194'S & 9532'W
of SHL 89.54° Inc @ 272.15° Azm



ENSIGN
Directional

Groves Farm 34-L Pad Sec.34-T7N-R65W
 Groves Farm S-34-33HC
 Groves Farms S-34-33HC Wellbore #1
 9:23, December 08 2020

ANNOTATIONS

TVD	MD	Annotation
7138.4	7834.6	TPZ - 1170'FSL & 150'FEL, Sec.34

LEGEND

- △ Groves Farm S-34-33HC, Groves Farms S-34-33HC Wellbore #1, Plan #4 (11-25-20) V0
- Groves Farms S-34-33HC Wellbore #1
- Survey #1

Bayswater Exploration & Production, LLC

SEC.34-T7N-R65W

Groves Farm 34-L Pad Sec.34-T7N-R65W

Groves Farm S-34-33HC

Groves Farms S-34-33HC Wellbore #1

Survey: Survey #1

Standard Survey Report

08 December, 2020

Ensign Energy Services Inc.

Survey Report

Company:	Bayswater Exploration & Production, LLC	Local Co-ordinate Reference:	Well Groves Farm S-34-33HC
Project:	SEC.34-T7N-R65W	TVD Reference:	WELL @ 4867.0ft (Original Well Elev)
Site:	Groves Farm 34-L Pad Sec.34-T7N-R65W	MD Reference:	WELL @ 4867.0ft (Original Well Elev)
Well:	Groves Farm S-34-33HC	North Reference:	True
Wellbore:	Groves Farms S-34-33HC Wellbore #1	Survey Calculation Method:	Minimum Curvature
Design:	Groves Farms S-34-33HC Wellbore #1	Database:	US_EDM

Project	SEC.34-T7N-R65W, Weld County, CO		
Map System:	US State Plane 1983	System Datum:	Mean Sea Level
Geo Datum:	North American Datum 1983		Using Well Reference Point
Map Zone:	Colorado Northern Zone		Using geodetic scale factor

Site	Groves Farm 34-L Pad Sec.34-T7N-R65W				
Site Position:		Northing:	1,437,170.88 usft	Latitude:	40.530274
From:	Lat/Long	Easting:	3,238,241.57 usft	Longitude:	-104.642926
Position Uncertainty:	0.0 ft	Slot Radius:	13-3/16 "	Grid Convergence:	0.55 °

Well	Groves Farm S-34-33HC					
Well Position	+N-S	0.0 ft	Northing:	1,437,095.80 usft	Latitude:	40.530068
	+E-W	0.0 ft	Easting:	3,238,240.35 usft	Longitude:	-104.642933
Position Uncertainty		0.0 ft	Wellhead Elevation:	0.0 ft	Ground Level:	4,844.0 ft

Wellbore	Groves Farms S-34-33HC Wellbore #1				
Magnetics	Model Name	Sample Date	Declination (°)	Dip Angle (°)	Field Strength (nT)
	HDGM	11/25/2020	7.75	66.85	52,061

Design	Groves Farms S-34-33HC Wellbore #1				
Audit Notes:					
Version:	1.0	Phase:	ACTUAL	Tie On Depth:	0.0
Vertical Section:	Depth From (TVD) (ft)	+N/-S (ft)	+E/-W (ft)	Direction (°)	
	0.0	0.0	0.0	262.86	

Survey Program	Date	12/08/2020			
From (ft)	To (ft)	Survey (Wellbore)	Tool Name	Description	
208.0	18,115.0	Survey #1 (Groves Farms S-34-33HC Wel	MWD	MWD - Standard	

Survey										
Measured Depth (ft)	Inclination (°)	Azimuth (°)	Vertical Depth (ft)	+N/-S (ft)	+E/-W (ft)	Vertical Section (ft)	Dogleg Rate (°/100usft)	Build Rate (°/100usft)	Turn Rate (°/100usft)	
0.0	0.00	0.00	0.0	0.0	0.0	0.0	0.00	0.00	0.00	
208.0	0.62	317.67	208.0	0.8	-0.8	0.6	0.30	0.30	0.00	
297.0	1.06	341.23	297.0	2.0	-1.3	1.1	0.62	0.49	26.47	
387.0	1.41	341.75	387.0	3.8	-2.0	1.5	0.39	0.39	0.58	
476.0	0.18	82.65	476.0	4.9	-2.2	1.5	1.63	-1.38	113.37	
566.0	0.62	129.41	566.0	4.6	-1.6	1.1	0.57	0.49	51.96	
655.0	0.62	141.72	654.9	3.9	-1.0	0.5	0.15	0.00	13.83	
744.0	1.06	129.94	743.9	3.0	0.0	-0.3	0.53	0.49	-13.24	
834.0	1.06	139.61	833.9	1.8	1.1	-1.3	0.20	0.00	10.74	
923.0	1.32	137.22	922.9	0.4	2.4	-2.4	0.30	0.29	-2.69	

Ensign Energy Services Inc.

Survey Report

Company:	Bayswater Exploration & Production, LLC	Local Co-ordinate Reference:	Well Groves Farm S-34-33HC
Project:	SEC.34-T7N-R65W	TVD Reference:	WELL @ 4867.0ft (Original Well Elev)
Site:	Groves Farm 34-L Pad Sec.34-T7N-R65W	MD Reference:	WELL @ 4867.0ft (Original Well Elev)
Well:	Groves Farm S-34-33HC	North Reference:	True
Wellbore:	Groves Farms S-34-33HC Wellbore #1	Survey Calculation Method:	Minimum Curvature
Design:	Groves Farms S-34-33HC Wellbore #1	Database:	US_EDM

Survey

Measured Depth (ft)	Inclination (°)	Azimuth (°)	Vertical Depth (ft)	+N/-S (ft)	+E/-W (ft)	Vertical Section (ft)	Dogleg Rate (°/100usft)	Build Rate (°/100usft)	Turn Rate (°/100usft)
1,012.0	1.76	127.83	1,011.9	-1.2	4.1	-4.0	0.57	0.49	-10.55
1,102.0	2.46	123.43	1,101.8	-3.1	6.8	-6.4	0.80	0.78	-4.89
1,191.0	2.73	120.62	1,190.7	-5.2	10.3	-9.5	0.34	0.30	-3.16
1,281.0	2.99	118.86	1,280.6	-7.4	14.2	-13.1	0.30	0.29	-1.96
1,370.0	3.25	115.88	1,369.5	-9.6	18.5	-17.1	0.34	0.29	-3.35
1,491.0	4.92	116.05	1,490.2	-13.4	26.2	-24.3	1.38	1.38	0.14
1,505.9	4.99	115.93	1,505.0	-14.0	27.4	-25.4	0.48	0.47	-0.81
1,520.7	5.07	115.79	1,519.8	-14.6	28.5	-26.5	0.55	0.54	-0.94
1,535.6	5.16	115.66	1,534.6	-15.1	29.7	-27.6	0.61	0.61	-0.87
1,550.4	5.24	115.56	1,549.4	-15.7	30.9	-28.7	0.54	0.54	-0.67
1,565.3	5.31	115.54	1,564.2	-16.3	32.2	-29.9	0.47	0.47	-0.13
1,580.1	5.38	115.65	1,578.9	-16.9	33.4	-31.1	0.48	0.47	0.74
1,595.0	5.42	115.95	1,593.7	-17.5	34.7	-32.2	0.33	0.27	2.02
1,610.0	5.44	116.58	1,608.7	-18.1	36.0	-33.4	0.42	0.13	4.20
1,625.0	5.43	117.39	1,623.6	-18.8	37.2	-34.6	0.52	-0.07	5.40
1,640.0	5.42	118.30	1,638.5	-19.4	38.5	-35.8	0.58	-0.07	6.07
1,655.0	5.41	119.21	1,653.5	-20.1	39.7	-36.9	0.58	-0.07	6.07
1,670.0	6.09	126.57	1,668.4	-20.9	41.0	-38.0	6.68	4.53	49.07
1,685.0	6.74	131.64	1,683.3	-22.0	42.3	-39.2	5.74	4.33	33.80
1,699.8	6.75	132.14	1,698.0	-23.2	43.6	-40.3	0.40	0.07	3.37
1,714.7	6.77	132.56	1,712.8	-24.3	44.9	-41.5	0.36	0.13	2.83
1,729.5	6.80	132.91	1,727.5	-25.5	46.1	-42.6	0.34	0.20	2.36
1,744.3	6.83	133.17	1,742.2	-26.7	47.4	-43.7	0.29	0.20	1.75
1,759.2	6.87	133.32	1,756.9	-27.9	48.7	-44.9	0.30	0.27	1.01
1,774.0	6.93	133.29	1,771.7	-29.2	50.0	-46.0	0.41	0.40	-0.20
1,788.8	7.72	133.65	1,786.4	-30.5	51.4	-47.2	5.34	5.33	2.43
1,803.7	8.33	133.77	1,801.1	-31.9	52.9	-48.5	4.11	4.11	0.81
1,818.5	8.45	133.23	1,815.7	-33.4	54.5	-49.9	0.97	0.81	-3.64
1,833.3	8.58	132.70	1,830.4	-34.9	56.1	-51.3	1.02	0.88	-3.57
1,848.2	8.73	132.29	1,845.1	-36.4	57.7	-52.7	1.09	1.01	-2.76
1,863.0	8.89	132.14	1,859.7	-37.9	59.4	-54.2	1.09	1.08	-1.01
1,878.0	9.53	132.63	1,874.5	-39.5	61.2	-55.8	4.30	4.27	3.27
1,893.0	10.42	133.27	1,889.3	-41.3	63.1	-57.4	5.98	5.93	4.27
1,908.0	10.64	133.84	1,904.1	-43.2	65.0	-59.2	1.62	1.47	3.80
1,923.0	10.86	134.49	1,918.8	-45.1	67.1	-60.9	1.67	1.47	4.33
1,938.0	11.06	135.13	1,933.5	-47.2	69.1	-62.7	1.56	1.33	4.27
1,953.0	11.21	135.72	1,948.2	-49.2	71.1	-64.4	1.26	1.00	3.93
1,967.8	12.64	135.63	1,962.8	-51.4	73.3	-66.3	9.64	9.64	-0.61
1,982.7	13.02	135.84	1,977.2	-53.8	75.6	-68.3	2.58	2.56	1.42
1,997.5	12.96	136.12	1,991.7	-56.2	77.9	-70.3	0.59	-0.40	1.89
2,012.3	12.88	136.35	2,006.1	-58.6	80.2	-72.3	0.64	-0.54	1.55
2,027.2	12.80	136.52	2,020.6	-61.0	82.4	-74.2	0.60	-0.54	1.15
2,042.0	12.75	136.62	2,035.1	-63.3	84.7	-76.2	0.37	-0.34	0.67
2,056.8	12.85	136.53	2,049.5	-65.7	86.9	-78.1	0.69	0.67	-0.61

Ensign Energy Services Inc.

Survey Report

Company:	Bayswater Exploration & Production, LLC	Local Co-ordinate Reference:	Well Groves Farm S-34-33HC
Project:	SEC.34-T7N-R65W	TVD Reference:	WELL @ 4867.0ft (Original Well Elev)
Site:	Groves Farm 34-L Pad Sec.34-T7N-R65W	MD Reference:	WELL @ 4867.0ft (Original Well Elev)
Well:	Groves Farm S-34-33HC	North Reference:	True
Wellbore:	Groves Farms S-34-33HC Wellbore #1	Survey Calculation Method:	Minimum Curvature
Design:	Groves Farms S-34-33HC Wellbore #1	Database:	US_EDM

Survey

Measured Depth (ft)	Inclination (°)	Azimuth (°)	Vertical Depth (ft)	+N/-S (ft)	+E/-W (ft)	Vertical Section (ft)	Dogleg Rate (°/100usft)	Build Rate (°/100usft)	Turn Rate (°/100usft)
2,071.7	14.42	135.86	2,063.9	-68.2	89.4	-80.2	10.63	10.58	-4.51
2,086.5	14.57	135.70	2,078.3	-70.9	92.0	-82.4	1.05	1.01	-1.08
2,101.3	14.65	135.59	2,092.7	-73.6	94.6	-84.7	0.57	0.54	-0.74
2,116.2	14.73	135.51	2,107.0	-76.3	97.2	-87.0	0.56	0.54	-0.54
2,131.0	14.81	135.54	2,121.3	-79.0	99.9	-89.3	0.54	0.54	0.20
2,145.8	14.89	135.77	2,135.7	-81.7	102.5	-91.6	0.67	0.54	1.55
2,160.7	17.01	135.18	2,150.0	-84.6	105.4	-94.0	14.33	14.29	-3.98
2,175.5	17.91	134.99	2,164.1	-87.7	108.5	-96.8	6.08	6.07	-1.28
2,190.3	17.99	135.39	2,178.2	-91.0	111.7	-99.6	0.99	0.54	2.70
2,205.2	18.08	135.81	2,192.3	-94.3	115.0	-102.3	1.07	0.61	2.83
2,220.0	18.19	136.19	2,206.4	-97.6	118.2	-105.1	1.09	0.74	2.56
2,235.0	18.31	136.51	2,220.7	-101.0	121.4	-107.9	1.04	0.80	2.13
2,250.0	19.63	134.77	2,234.8	-104.5	124.8	-110.9	9.57	8.80	-11.60
2,265.0	20.60	133.71	2,248.9	-108.1	128.5	-114.1	6.91	6.47	-7.07
2,280.0	20.75	133.89	2,263.0	-111.7	132.3	-117.4	1.09	1.00	1.20
2,295.0	20.89	134.06	2,277.0	-115.4	136.2	-120.8	1.02	0.93	1.13
2,310.0	21.02	134.22	2,291.0	-119.2	140.0	-124.1	0.95	0.87	1.07
2,325.0	21.59	133.70	2,305.0	-122.9	143.9	-127.5	4.00	3.80	-3.47
2,340.0	22.81	132.07	2,318.9	-126.8	148.1	-131.2	9.11	8.13	-10.87
2,355.0	22.88	132.16	2,332.7	-130.7	152.4	-135.0	0.52	0.47	0.60
2,370.0	22.94	132.24	2,346.5	-134.6	156.7	-138.8	0.45	0.40	0.53
2,385.0	22.98	132.30	2,360.3	-138.6	161.1	-142.6	0.31	0.27	0.40
2,400.0	23.00	132.32	2,374.1	-142.5	165.4	-146.4	0.14	0.13	0.13
2,414.8	22.98	132.28	2,387.8	-146.4	169.7	-150.2	0.17	-0.13	-0.27
2,429.7	22.93	132.21	2,401.4	-150.3	174.0	-153.9	0.38	-0.34	-0.47
2,444.5	22.87	132.13	2,415.1	-154.2	178.2	-157.7	0.46	-0.40	-0.54
2,459.3	22.79	132.05	2,428.8	-158.0	182.5	-161.5	0.58	-0.54	-0.54
2,474.2	22.70	131.99	2,442.4	-161.9	186.8	-165.2	0.63	-0.61	-0.40
2,489.0	22.59	131.97	2,456.1	-165.7	191.0	-169.0	0.74	-0.74	-0.13
2,504.0	22.46	132.03	2,470.0	-169.5	195.3	-172.7	0.88	-0.87	0.40
2,519.0	22.32	132.13	2,483.9	-173.4	199.5	-176.4	0.97	-0.93	0.67
2,534.0	22.17	132.25	2,497.7	-177.2	203.7	-180.1	1.04	-1.00	0.80
2,549.0	22.01	132.36	2,511.6	-181.0	207.9	-183.8	1.10	-1.07	0.73
2,564.0	21.86	132.46	2,525.6	-184.8	212.1	-187.5	1.03	-1.00	0.67
2,579.0	21.71	132.51	2,539.5	-188.5	216.2	-191.1	1.01	-1.00	0.33
2,594.0	21.57	132.46	2,553.4	-192.3	220.2	-194.6	0.94	-0.93	-0.33
2,609.0	21.44	132.37	2,567.4	-196.0	224.3	-198.2	0.89	-0.87	-0.60
2,624.0	21.32	132.25	2,581.3	-199.6	228.3	-201.8	0.85	-0.80	-0.80
2,639.0	21.21	132.14	2,595.3	-203.3	232.4	-205.3	0.78	-0.73	-0.73
2,654.0	21.12	132.04	2,609.3	-206.9	236.4	-208.8	0.65	-0.60	-0.67
2,669.0	21.07	132.00	2,623.3	-210.5	240.4	-212.4	0.35	-0.33	-0.27
2,683.8	21.06	132.04	2,637.1	-214.1	244.4	-215.9	0.12	-0.07	0.27
2,698.7	21.08	132.14	2,651.0	-217.7	248.3	-219.3	0.28	0.13	0.67

Ensign Energy Services Inc.

Survey Report

Company:	Bayswater Exploration & Production, LLC	Local Co-ordinate Reference:	Well Groves Farm S-34-33HC
Project:	SEC.34-T7N-R65W	TVD Reference:	WELL @ 4867.0ft (Original Well Elev)
Site:	Groves Farm 34-L Pad Sec.34-T7N-R65W	MD Reference:	WELL @ 4867.0ft (Original Well Elev)
Well:	Groves Farm S-34-33HC	North Reference:	True
Wellbore:	Groves Farms S-34-33HC Wellbore #1	Survey Calculation Method:	Minimum Curvature
Design:	Groves Farms S-34-33HC Wellbore #1	Database:	US_EDM

Survey									
Measured Depth (ft)	Inclination (°)	Azimuth (°)	Vertical Depth (ft)	+N/-S (ft)	+E/-W (ft)	Vertical Section (ft)	Dogleg Rate (°/100usft)	Build Rate (°/100usft)	Turn Rate (°/100usft)
2,713.5	21.11	132.26	2,664.8	-221.3	252.3	-222.8	0.35	0.20	0.81
2,728.3	21.14	132.39	2,678.7	-224.9	256.2	-226.3	0.38	0.20	0.88
2,743.2	21.72	132.75	2,692.5	-228.5	260.2	-229.8	4.01	3.91	2.43
2,758.0	22.97	133.36	2,706.2	-232.4	264.3	-233.4	8.57	8.43	4.11
2,772.8	22.95	133.41	2,719.9	-236.4	268.5	-237.1	0.19	-0.13	0.34
2,787.7	22.91	133.43	2,733.5	-240.3	272.7	-240.8	0.27	-0.27	0.13
2,802.5	22.86	133.45	2,747.2	-244.3	276.9	-244.4	0.34	-0.34	0.13
2,817.3	22.80	133.45	2,760.8	-248.3	281.1	-248.1	0.40	-0.40	0.00
2,832.2	22.74	133.45	2,774.5	-252.2	285.3	-251.7	0.40	-0.40	0.00
2,847.0	22.68	133.44	2,788.2	-256.1	289.4	-255.4	0.41	-0.40	-0.07
2,862.0	22.60	133.43	2,802.1	-260.1	293.6	-259.0	0.53	-0.53	-0.07
2,877.0	22.52	133.41	2,815.9	-264.1	297.8	-262.7	0.54	-0.53	-0.13
2,892.0	22.45	133.39	2,829.8	-268.0	302.0	-266.3	0.47	-0.47	-0.13
2,907.0	22.38	133.36	2,843.6	-271.9	306.1	-270.0	0.47	-0.47	-0.20
2,922.0	22.32	133.34	2,857.5	-275.9	310.3	-273.6	0.40	-0.40	-0.13
2,937.0	22.29	133.32	2,871.4	-279.8	314.4	-277.2	0.21	-0.20	-0.13
2,951.0	22.29	133.31	2,884.3	-283.4	318.3	-280.6	0.03	0.00	-0.07
2,965.0	22.31	133.30	2,897.3	-287.0	322.1	-284.0	0.15	0.14	-0.07
2,979.0	22.34	133.29	2,910.2	-290.7	326.0	-287.4	0.22	0.21	-0.07
2,993.0	22.37	133.28	2,923.2	-294.3	329.9	-290.8	0.22	0.21	-0.07
3,007.0	22.40	133.26	2,936.1	-298.0	333.8	-294.2	0.22	0.21	-0.14
3,021.0	22.85	132.97	2,949.1	-301.7	337.7	-297.6	3.31	3.21	-2.07
3,035.0	23.62	132.50	2,961.9	-305.4	341.8	-301.2	5.66	5.50	-3.36
3,049.0	23.64	132.45	2,974.7	-309.2	345.9	-304.8	0.20	0.14	-0.36
3,064.0	23.65	132.37	2,988.5	-313.3	350.3	-308.7	0.22	0.07	-0.53
3,079.0	23.65	132.28	3,002.2	-317.3	354.8	-312.6	0.24	0.00	-0.60
3,094.0	23.63	132.18	3,016.0	-321.4	359.2	-316.5	0.30	-0.13	-0.67
3,109.0	23.61	132.09	3,029.7	-325.4	363.7	-320.5	0.27	-0.13	-0.60
3,124.0	23.56	131.99	3,043.5	-329.4	368.2	-324.4	0.43	-0.33	-0.67
3,139.0	23.50	131.90	3,057.2	-333.4	372.6	-328.3	0.47	-0.40	-0.60
3,153.8	23.40	131.84	3,070.8	-337.4	377.0	-332.2	0.69	-0.67	-0.40
3,168.7	23.27	131.79	3,084.4	-341.3	381.4	-336.0	0.89	-0.88	-0.34
3,183.5	23.14	131.75	3,098.1	-345.2	385.8	-339.9	0.88	-0.88	-0.27
3,198.3	22.99	131.73	3,111.7	-349.0	390.1	-343.7	1.01	-1.01	-0.13
3,213.2	22.85	131.71	3,125.4	-352.9	394.4	-347.5	0.94	-0.94	-0.13
3,228.0	22.71	131.71	3,139.1	-356.7	398.7	-351.3	0.94	-0.94	0.00
3,242.8	22.58	131.75	3,152.7	-360.5	402.9	-355.0	0.88	-0.88	0.27
3,257.7	22.47	131.80	3,166.5	-364.3	407.2	-358.8	0.75	-0.74	0.34
3,272.5	22.36	131.85	3,180.2	-368.1	411.4	-362.5	0.75	-0.74	0.34
3,287.3	22.26	131.91	3,193.9	-371.8	415.6	-366.2	0.69	-0.67	0.40
3,302.2	22.16	131.96	3,207.6	-375.6	419.8	-369.8	0.69	-0.67	0.34
3,317.0	22.08	131.99	3,221.4	-379.3	423.9	-373.5	0.54	-0.54	0.20
3,331.8	22.02	132.00	3,235.1	-383.0	428.1	-377.1	0.41	-0.40	0.07

Ensign Energy Services Inc.

Survey Report

Company:	Bayswater Exploration & Production, LLC	Local Co-ordinate Reference:	Well Groves Farm S-34-33HC
Project:	SEC.34-T7N-R65W	TVD Reference:	WELL @ 4867.0ft (Original Well Elev)
Site:	Groves Farm 34-L Pad Sec.34-T7N-R65W	MD Reference:	WELL @ 4867.0ft (Original Well Elev)
Well:	Groves Farm S-34-33HC	North Reference:	True
Wellbore:	Groves Farms S-34-33HC Wellbore #1	Survey Calculation Method:	Minimum Curvature
Design:	Groves Farms S-34-33HC Wellbore #1	Database:	US_EDM

Survey										
Measured Depth (ft)	Inclination (°)	Azimuth (°)	Vertical Depth (ft)	+N/-S (ft)	+E/-W (ft)	Vertical Section (ft)	Dogleg Rate (°/100usft)	Build Rate (°/100usft)	Turn Rate (°/100usft)	
3,346.7	21.97	131.98	3,248.9	-386.7	432.2	-380.8	0.34	-0.34	-0.13	
3,361.5	21.93	131.95	3,262.6	-390.5	436.3	-384.4	0.28	-0.27	-0.20	
3,376.3	21.88	131.91	3,276.4	-394.2	440.4	-388.0	0.35	-0.34	-0.27	
3,391.2	21.82	131.86	3,290.2	-397.8	444.5	-391.7	0.42	-0.40	-0.34	
3,406.0	21.76	131.80	3,303.9	-401.5	448.6	-395.3	0.43	-0.40	-0.40	
3,421.0	21.77	131.69	3,317.9	-405.2	452.8	-398.9	0.28	0.07	-0.73	
3,436.0	22.98	131.33	3,331.7	-409.0	457.1	-402.7	8.12	8.07	-2.40	
3,451.0	22.85	131.22	3,345.5	-412.9	461.5	-406.6	0.91	-0.87	-0.73	
3,466.0	22.71	131.11	3,359.4	-416.7	465.8	-410.4	0.98	-0.93	-0.73	
3,481.0	22.55	130.98	3,373.2	-420.5	470.2	-414.3	1.12	-1.07	-0.87	
3,496.0	22.36	130.84	3,387.1	-424.2	474.5	-418.1	1.32	-1.27	-0.93	
3,510.7	22.15	130.69	3,400.7	-427.8	478.7	-421.8	1.48	-1.43	-1.02	
3,525.3	21.91	130.53	3,414.2	-431.4	482.9	-425.5	1.69	-1.64	-1.09	
3,540.0	21.67	130.36	3,427.9	-435.0	487.0	-429.2	1.69	-1.64	-1.16	
3,554.7	21.43	130.19	3,441.5	-438.4	491.1	-432.9	1.69	-1.64	-1.16	
3,569.3	21.20	130.01	3,455.2	-441.9	495.2	-436.5	1.63	-1.57	-1.23	
3,584.0	21.00	129.83	3,468.9	-445.3	499.3	-440.1	1.43	-1.36	-1.23	
3,599.0	20.83	129.65	3,482.9	-448.7	503.4	-443.7	1.21	-1.13	-1.20	
3,614.0	20.68	129.48	3,496.9	-452.1	507.5	-447.4	1.08	-1.00	-1.13	
3,629.0	20.55	129.30	3,510.9	-455.4	511.6	-451.0	0.96	-0.87	-1.20	
3,644.0	20.42	129.13	3,525.0	-458.7	515.6	-454.6	0.95	-0.87	-1.13	
3,659.0	20.29	128.96	3,539.1	-462.0	519.7	-458.2	0.95	-0.87	-1.13	
3,674.0	20.15	128.79	3,553.1	-465.3	523.7	-461.8	1.01	-0.93	-1.13	
3,688.8	21.32	129.21	3,567.0	-468.6	527.8	-465.5	7.95	7.89	2.83	
3,703.7	22.05	129.42	3,580.8	-472.1	532.0	-469.3	4.95	4.92	1.42	
3,718.5	21.84	129.26	3,594.5	-475.6	536.3	-473.1	1.47	-1.42	-1.08	
3,733.3	21.63	129.10	3,608.3	-479.0	540.6	-476.9	1.47	-1.42	-1.08	
3,748.2	21.41	128.93	3,622.1	-482.5	544.8	-480.6	1.54	-1.48	-1.15	
3,763.0	21.19	128.78	3,635.9	-485.9	549.0	-484.4	1.53	-1.48	-1.01	
3,777.8	20.99	128.64	3,649.8	-489.2	553.2	-488.1	1.39	-1.35	-0.94	
3,792.7	20.80	128.52	3,663.6	-492.5	557.3	-491.8	1.31	-1.28	-0.81	
3,807.5	20.62	128.42	3,677.5	-495.8	561.4	-495.5	1.24	-1.21	-0.67	
3,822.3	20.44	128.35	3,691.4	-499.0	565.5	-499.1	1.22	-1.21	-0.47	
3,837.2	20.26	128.32	3,705.3	-502.2	569.5	-502.7	1.21	-1.21	-0.20	
3,852.0	20.09	128.35	3,719.2	-505.4	573.6	-506.3	1.15	-1.15	0.20	
3,867.0	20.69	129.94	3,733.3	-508.7	577.6	-509.9	5.44	4.00	10.60	
3,882.0	22.02	130.84	3,747.3	-512.2	581.8	-513.6	9.13	8.87	6.00	
3,897.0	21.85	131.11	3,761.2	-515.9	586.0	-517.4	1.32	-1.13	1.80	
3,912.0	21.69	131.43	3,775.1	-519.5	590.2	-521.0	1.33	-1.07	2.13	
3,927.0	21.55	131.75	3,789.1	-523.2	594.3	-524.7	1.22	-0.93	2.13	
3,942.0	21.44	132.05	3,803.0	-526.9	598.4	-528.3	1.04	-0.73	2.00	
3,956.7	21.41	132.25	3,816.7	-530.5	602.4	-531.8	0.54	-0.20	1.36	
3,971.5	21.41	132.41	3,830.5	-534.1	606.4	-535.3	0.40	0.00	1.08	
3,986.2	21.44	132.54	3,844.2	-537.8	610.4	-538.8	0.38	0.20	0.88	

Ensign Energy Services Inc.

Survey Report

Company:	Bayswater Exploration & Production, LLC	Local Co-ordinate Reference:	Well Groves Farm S-34-33HC
Project:	SEC.34-T7N-R65W	TVD Reference:	WELL @ 4867.0ft (Original Well Elev)
Site:	Groves Farm 34-L Pad Sec.34-T7N-R65W	MD Reference:	WELL @ 4867.0ft (Original Well Elev)
Well:	Groves Farm S-34-33HC	North Reference:	True
Wellbore:	Groves Farms S-34-33HC Wellbore #1	Survey Calculation Method:	Minimum Curvature
Design:	Groves Farms S-34-33HC Wellbore #1	Database:	US_EDM

Survey										
Measured Depth (ft)	Inclination (°)	Azimuth (°)	Vertical Depth (ft)	+N/-S (ft)	+E/-W (ft)	Vertical Section (ft)	Dogleg Rate (°/100usft)	Build Rate (°/100usft)	Turn Rate (°/100usft)	
4,001.0	21.49	132.65	3,857.9	-541.4	614.3	-542.3	0.44	0.34	0.75	
4,015.7	21.55	132.75	3,871.7	-545.1	618.3	-545.8	0.48	0.41	0.68	
4,030.5	21.62	132.83	3,885.4	-548.8	622.3	-549.3	0.51	0.47	0.54	
4,045.2	21.70	132.91	3,899.1	-552.5	626.3	-552.8	0.58	0.54	0.54	
4,060.0	21.79	132.98	3,912.8	-556.2	630.3	-556.3	0.63	0.61	0.47	
4,074.7	21.87	133.04	3,926.5	-559.9	634.3	-559.8	0.56	0.54	0.41	
4,089.5	21.96	133.08	3,940.2	-563.7	638.3	-563.3	0.62	0.61	0.27	
4,104.2	22.05	133.11	3,953.8	-567.5	642.3	-566.9	0.61	0.61	0.20	
4,119.0	22.13	133.12	3,967.5	-571.3	646.4	-570.4	0.54	0.54	0.07	
4,133.8	22.21	133.08	3,981.2	-575.1	650.5	-574.0	0.55	0.54	-0.27	
4,148.7	22.28	133.02	3,995.0	-578.9	654.6	-577.6	0.50	0.47	-0.40	
4,163.5	22.35	132.95	4,008.7	-582.8	658.7	-581.2	0.50	0.47	-0.47	
4,178.3	22.41	132.88	4,022.4	-586.6	662.8	-584.8	0.44	0.40	-0.47	
4,193.2	22.47	132.80	4,036.1	-590.5	667.0	-588.5	0.45	0.40	-0.54	
4,208.0	22.51	132.73	4,049.8	-594.3	671.2	-592.1	0.32	0.27	-0.47	
4,222.8	22.53	132.67	4,063.5	-598.2	675.3	-595.8	0.21	0.13	-0.40	
4,237.7	22.54	132.62	4,077.2	-602.0	679.5	-599.4	0.15	0.07	-0.34	
4,252.5	22.54	132.58	4,090.9	-605.9	683.7	-603.1	0.10	0.00	-0.27	
4,267.3	22.53	132.55	4,104.6	-609.7	687.9	-606.8	0.10	-0.07	-0.20	
4,282.2	22.51	132.53	4,118.3	-613.5	692.1	-610.5	0.14	-0.13	-0.13	
4,297.0	22.47	132.53	4,132.0	-617.4	696.3	-614.1	0.27	-0.27	0.00	
4,311.8	22.40	132.55	4,145.7	-621.2	700.4	-617.8	0.47	-0.47	0.13	
4,326.7	22.32	132.58	4,159.5	-625.0	704.6	-621.5	0.54	-0.54	0.20	
4,341.5	22.23	132.62	4,173.2	-628.8	708.7	-625.1	0.62	-0.61	0.27	
4,356.3	22.15	132.67	4,186.9	-632.6	712.8	-628.7	0.55	-0.54	0.34	
4,371.2	22.08	132.71	4,200.7	-636.4	716.9	-632.3	0.48	-0.47	0.27	
4,386.0	22.04	132.75	4,214.4	-640.2	721.0	-635.9	0.29	-0.27	0.27	
4,400.8	22.05	132.79	4,228.2	-644.0	725.1	-639.5	0.12	0.07	0.27	
4,415.7	22.09	132.81	4,241.9	-647.8	729.2	-643.1	0.27	0.27	0.13	
4,430.5	22.13	132.84	4,255.6	-651.6	733.3	-646.7	0.28	0.27	0.20	
4,445.3	22.17	132.86	4,269.4	-655.4	737.4	-650.3	0.27	0.27	0.13	
4,460.2	22.18	132.88	4,283.1	-659.2	741.5	-653.9	0.08	0.07	0.13	
4,475.0	23.43	133.21	4,296.8	-663.1	745.7	-657.5	8.47	8.43	2.23	
4,489.8	24.97	133.06	4,310.3	-667.2	750.2	-661.4	10.39	10.38	-1.01	
4,504.7	24.84	133.08	4,323.8	-671.5	754.7	-665.4	0.88	-0.88	0.13	
4,519.5	24.69	133.10	4,337.2	-675.8	759.3	-669.4	1.01	-1.01	0.13	
4,534.3	24.51	133.12	4,350.7	-680.0	763.8	-673.3	1.22	-1.21	0.13	
4,549.2	24.33	133.13	4,364.2	-684.2	768.2	-677.3	1.21	-1.21	0.07	
4,564.0	24.13	133.12	4,377.8	-688.3	772.7	-681.2	1.35	-1.35	-0.07	
4,579.0	23.92	133.07	4,391.5	-692.5	777.1	-685.1	1.41	-1.40	-0.33	
4,594.0	23.71	133.01	4,405.2	-696.6	781.6	-688.9	1.41	-1.40	-0.40	
4,609.0	23.49	132.93	4,418.9	-700.7	786.0	-692.8	1.48	-1.47	-0.53	
4,624.0	23.25	132.85	4,432.7	-704.8	790.3	-696.6	1.61	-1.60	-0.53	

Ensign Energy Services Inc.

Survey Report

Company:	Bayswater Exploration & Production, LLC	Local Co-ordinate Reference:	Well Groves Farm S-34-33HC
Project:	SEC.34-T7N-R65W	TVD Reference:	WELL @ 4867.0ft (Original Well Elev)
Site:	Groves Farm 34-L Pad Sec.34-T7N-R65W	MD Reference:	WELL @ 4867.0ft (Original Well Elev)
Well:	Groves Farm S-34-33HC	North Reference:	True
Wellbore:	Groves Farms S-34-33HC Wellbore #1	Survey Calculation Method:	Minimum Curvature
Design:	Groves Farms S-34-33HC Wellbore #1	Database:	US_EDM

Survey

Measured Depth (ft)	Inclination (°)	Azimuth (°)	Vertical Depth (ft)	+N/-S (ft)	+E/-W (ft)	Vertical Section (ft)	Dogleg Rate (°/100usft)	Build Rate (°/100usft)	Turn Rate (°/100usft)
4,639.0	23.01	132.77	4,446.5	-708.8	794.6	-700.4	1.61	-1.60	-0.53
4,654.0	22.75	132.68	4,460.3	-712.7	798.9	-704.2	1.75	-1.73	-0.60
4,669.0	22.46	132.62	4,474.2	-716.6	803.2	-707.9	1.94	-1.93	-0.40
4,684.0	22.15	132.57	4,488.0	-720.5	807.4	-711.6	2.07	-2.07	-0.33
4,699.0	21.86	132.51	4,501.9	-724.3	811.5	-715.2	1.94	-1.93	-0.40
4,714.0	21.58	132.45	4,515.9	-728.1	815.6	-718.8	1.87	-1.87	-0.40
4,729.0	21.35	132.38	4,529.8	-731.8	819.6	-722.4	1.54	-1.53	-0.47
4,744.0	21.20	132.30	4,543.8	-735.4	823.7	-725.9	1.02	-1.00	-0.53
4,758.8	21.17	132.20	4,557.6	-739.0	827.6	-729.4	0.32	-0.20	-0.67
4,773.7	21.20	132.08	4,571.5	-742.6	831.6	-732.9	0.36	0.20	-0.81
4,788.5	21.27	131.96	4,585.3	-746.2	835.6	-736.4	0.56	0.47	-0.81
4,803.3	21.34	131.84	4,599.1	-749.8	839.6	-739.9	0.56	0.47	-0.81
4,818.2	21.39	131.71	4,612.9	-753.4	843.6	-743.5	0.46	0.34	-0.88
4,833.0	22.42	130.96	4,626.7	-757.1	847.8	-747.2	7.20	6.95	-5.06
4,848.0	23.20	130.56	4,640.5	-760.9	852.2	-751.1	5.30	5.20	-2.67
4,863.0	23.06	130.46	4,654.3	-764.7	856.7	-755.0	0.97	-0.93	-0.67
4,878.0	22.88	130.36	4,668.1	-768.5	861.1	-759.0	1.23	-1.20	-0.67
4,893.0	22.68	130.25	4,682.0	-772.2	865.6	-762.9	1.36	-1.33	-0.73
4,908.0	22.47	130.13	4,695.8	-776.0	870.0	-766.8	1.43	-1.40	-0.80
4,923.0	22.24	129.99	4,709.7	-779.6	874.3	-770.7	1.57	-1.53	-0.93
4,937.8	21.99	129.83	4,723.4	-783.2	878.6	-774.5	1.73	-1.69	-1.08
4,952.7	21.74	129.65	4,737.2	-786.7	882.9	-778.3	1.74	-1.68	-1.21
4,967.5	21.49	129.48	4,751.0	-790.2	887.1	-782.0	1.74	-1.69	-1.15
4,982.3	21.23	129.30	4,764.8	-793.7	891.3	-785.7	1.81	-1.75	-1.21
4,997.2	20.98	129.14	4,778.6	-797.0	895.4	-789.4	1.73	-1.68	-1.08
5,012.0	20.75	129.00	4,792.5	-800.4	899.5	-793.1	1.59	-1.55	-0.94
5,027.0	20.53	128.93	4,806.5	-803.7	903.6	-796.7	1.48	-1.47	-0.47
5,042.0	20.32	128.88	4,820.6	-807.0	907.7	-800.4	1.40	-1.40	-0.33
5,057.0	20.12	128.84	4,834.7	-810.2	911.7	-804.0	1.34	-1.33	-0.27
5,072.0	19.91	128.80	4,848.8	-813.4	915.7	-807.5	1.40	-1.40	-0.27
5,087.0	19.71	128.74	4,862.9	-816.6	919.7	-811.1	1.34	-1.33	-0.40
5,102.0	20.29	129.29	4,877.0	-819.9	923.7	-814.6	4.06	3.87	3.67
5,116.8	21.41	130.14	4,890.8	-823.2	927.7	-818.2	7.82	7.55	5.73
5,131.7	21.17	129.91	4,904.7	-826.7	931.9	-821.9	1.71	-1.62	-1.55
5,146.5	20.91	129.66	4,918.5	-830.1	935.9	-825.5	1.85	-1.75	-1.69
5,161.3	20.65	129.42	4,932.4	-833.5	940.0	-829.1	1.84	-1.75	-1.62
5,176.2	20.38	129.22	4,946.3	-836.8	944.0	-832.7	1.88	-1.82	-1.35
5,191.0	20.09	129.13	4,960.2	-840.0	948.0	-836.3	1.97	-1.96	-0.61
5,205.8	19.79	129.23	4,974.1	-843.2	951.9	-839.8	2.04	-2.02	0.67
5,220.7	19.49	129.44	4,988.1	-846.3	955.8	-843.2	2.08	-2.02	1.42
5,235.5	19.18	129.71	5,002.1	-849.5	959.6	-846.6	2.18	-2.09	1.82
5,250.3	18.89	129.99	5,016.1	-852.6	963.3	-849.9	2.05	-1.96	1.89
5,265.2	18.62	130.23	5,030.2	-855.6	966.9	-853.1	1.89	-1.82	1.62

Ensign Energy Services Inc.

Survey Report

Company:	Bayswater Exploration & Production, LLC	Local Co-ordinate Reference:	Well Groves Farm S-34-33HC
Project:	SEC.34-T7N-R65W	TVD Reference:	WELL @ 4867.0ft (Original Well Elev)
Site:	Groves Farm 34-L Pad Sec.34-T7N-R65W	MD Reference:	WELL @ 4867.0ft (Original Well Elev)
Well:	Groves Farm S-34-33HC	North Reference:	True
Wellbore:	Groves Farms S-34-33HC Wellbore #1	Survey Calculation Method:	Minimum Curvature
Design:	Groves Farms S-34-33HC Wellbore #1	Database:	US_EDM

Survey

Measured Depth (ft)	Inclination (°)	Azimuth (°)	Vertical Depth (ft)	+N/-S (ft)	+E/-W (ft)	Vertical Section (ft)	Dogleg Rate (°/100usft)	Build Rate (°/100usft)	Turn Rate (°/100usft)
5,280.0	20.15	131.55	5,044.2	-858.9	970.6	-856.4	10.73	10.32	8.90
5,294.8	20.48	134.10	5,058.1	-862.4	974.4	-859.7	6.37	2.23	17.19
5,309.7	20.28	134.05	5,072.0	-866.0	978.1	-862.9	1.35	-1.35	-0.34
5,324.5	20.10	133.97	5,085.9	-869.5	981.8	-866.2	1.23	-1.21	-0.54
5,339.3	19.92	133.85	5,099.8	-873.0	985.5	-869.3	1.24	-1.21	-0.81
5,354.2	19.75	133.70	5,113.8	-876.5	989.1	-872.5	1.20	-1.15	-1.01
5,369.0	21.34	134.61	5,127.7	-880.2	992.8	-875.8	10.94	10.72	6.14
5,384.0	22.93	137.15	5,141.6	-884.2	996.8	-879.2	12.37	10.60	16.93
5,399.0	22.75	136.90	5,155.4	-888.5	1,000.7	-882.6	1.36	-1.20	-1.67
5,414.0	22.58	136.63	5,169.2	-892.7	1,004.7	-886.0	1.33	-1.13	-1.80
5,429.0	22.40	136.36	5,183.1	-896.8	1,008.6	-889.4	1.38	-1.20	-1.80
5,444.0	22.22	136.12	5,197.0	-901.0	1,012.6	-892.8	1.34	-1.20	-1.60
5,459.0	22.02	135.96	5,210.9	-905.0	1,016.5	-896.2	1.39	-1.33	-1.07
5,474.0	21.79	135.96	5,224.8	-909.0	1,020.4	-899.5	1.53	-1.53	0.00
5,489.0	21.54	136.03	5,238.7	-913.0	1,024.2	-902.9	1.68	-1.67	0.47
5,504.0	21.27	136.14	5,252.7	-917.0	1,028.0	-906.1	1.82	-1.80	0.73
5,519.0	20.98	136.24	5,266.7	-920.9	1,031.8	-909.4	1.95	-1.93	0.67
5,534.0	20.67	136.29	5,280.7	-924.7	1,035.5	-912.5	2.07	-2.07	0.33
5,549.0	21.88	135.90	5,294.7	-928.6	1,039.2	-915.8	8.12	8.07	-2.60
5,563.8	23.34	136.49	5,308.4	-932.8	1,043.2	-919.2	9.96	9.84	3.98
5,578.7	22.89	136.22	5,322.0	-937.0	1,047.2	-922.7	3.12	-3.03	-1.82
5,593.5	22.41	135.87	5,335.7	-941.1	1,051.2	-926.1	3.36	-3.24	-2.36
5,608.3	21.92	135.50	5,349.4	-945.1	1,055.1	-929.5	3.44	-3.30	-2.49
5,623.2	21.46	135.12	5,363.2	-949.0	1,058.9	-932.8	3.24	-3.10	-2.56
5,638.0	21.04	134.79	5,377.0	-952.8	1,062.7	-936.1	2.94	-2.83	-2.23
5,652.8	20.71	134.61	5,390.9	-956.5	1,066.5	-939.4	2.27	-2.23	-1.21
5,667.7	20.44	134.50	5,404.8	-960.2	1,070.2	-942.6	1.84	-1.82	-0.74
5,682.5	20.18	134.42	5,418.7	-963.8	1,073.9	-945.8	1.76	-1.75	-0.54
5,697.3	19.93	134.34	5,432.6	-967.3	1,077.5	-949.0	1.70	-1.69	-0.54
5,712.2	19.66	134.23	5,446.6	-970.8	1,081.1	-952.1	1.84	-1.82	-0.74
5,727.0	20.84	134.56	5,460.5	-974.4	1,084.8	-955.3	7.99	7.96	2.23
5,741.8	22.53	136.14	5,474.3	-978.3	1,088.6	-958.6	12.06	11.40	10.65
5,756.7	22.37	136.16	5,488.0	-982.4	1,092.6	-962.0	1.08	-1.08	0.13
5,771.5	21.84	135.83	5,501.7	-986.4	1,096.4	-965.4	3.67	-3.57	-2.23
5,786.3	21.31	135.48	5,515.5	-990.3	1,100.3	-968.7	3.68	-3.57	-2.36
5,801.2	20.80	135.11	5,529.4	-994.1	1,104.0	-971.9	3.55	-3.44	-2.49
5,816.0	20.36	134.78	5,543.3	-997.8	1,107.7	-975.1	3.07	-2.97	-2.23
5,830.8	20.05	134.54	5,557.2	-1,001.4	1,111.3	-978.3	2.16	-2.09	-1.62
5,845.7	19.81	134.34	5,571.1	-1,004.9	1,114.9	-981.4	1.68	-1.62	-1.35
5,860.5	19.61	134.15	5,585.1	-1,008.4	1,118.5	-984.6	1.42	-1.35	-1.28
5,875.3	19.43	133.94	5,599.1	-1,011.9	1,122.1	-987.7	1.30	-1.21	-1.42
5,890.2	19.24	133.70	5,613.1	-1,015.3	1,125.6	-990.8	1.39	-1.28	-1.62
5,905.0	20.88	133.66	5,627.0	-1,018.8	1,129.3	-994.0	11.06	11.06	-0.27
5,920.0	22.65	135.48	5,640.9	-1,022.7	1,133.3	-997.4	12.63	11.80	12.13

Ensign Energy Services Inc.

Survey Report

Company:	Bayswater Exploration & Production, LLC	Local Co-ordinate Reference:	Well Groves Farm S-34-33HC
Project:	SEC.34-T7N-R65W	TVD Reference:	WELL @ 4867.0ft (Original Well Elev)
Site:	Groves Farm 34-L Pad Sec.34-T7N-R65W	MD Reference:	WELL @ 4867.0ft (Original Well Elev)
Well:	Groves Farm S-34-33HC	North Reference:	True
Wellbore:	Groves Farms S-34-33HC Wellbore #1	Survey Calculation Method:	Minimum Curvature
Design:	Groves Farms S-34-33HC Wellbore #1	Database:	US_EDM

Survey

Measured Depth (ft)	Inclination (°)	Azimuth (°)	Vertical Depth (ft)	+N/-S (ft)	+E/-W (ft)	Vertical Section (ft)	Dogleg Rate (°/100usft)	Build Rate (°/100usft)	Turn Rate (°/100usft)
5,935.0	22.79	135.52	5,654.8	-1,026.8	1,137.3	-1,000.9	0.94	0.93	0.27
5,950.0	22.51	135.02	5,668.6	-1,030.9	1,141.4	-1,004.4	2.27	-1.87	-3.33
5,965.0	22.21	134.49	5,682.5	-1,035.0	1,145.5	-1,008.0	2.41	-2.00	-3.53
5,980.0	21.89	133.96	5,696.4	-1,038.9	1,149.5	-1,011.5	2.51	-2.13	-3.53
5,995.0	23.18	133.74	5,710.2	-1,042.9	1,153.6	-1,015.1	8.62	8.60	-1.47
6,009.8	23.77	133.26	5,723.8	-1,046.9	1,157.9	-1,018.9	4.18	3.98	-3.24
6,024.7	23.36	132.87	5,737.5	-1,051.0	1,162.3	-1,022.6	2.96	-2.76	-2.63
6,039.5	22.94	132.47	5,751.1	-1,054.9	1,166.5	-1,026.4	3.02	-2.83	-2.70
6,054.3	22.52	132.08	5,764.8	-1,058.8	1,170.8	-1,030.1	3.01	-2.83	-2.63
6,069.2	22.12	131.70	5,778.5	-1,062.5	1,175.0	-1,033.8	2.87	-2.70	-2.56
6,084.0	21.75	131.34	5,792.3	-1,066.2	1,179.1	-1,037.5	2.65	-2.49	-2.43
6,099.0	21.46	131.06	5,806.2	-1,069.9	1,183.3	-1,041.2	2.05	-1.93	-1.87
6,114.0	21.21	130.79	5,820.2	-1,073.4	1,187.4	-1,044.8	1.79	-1.67	-1.80
6,129.0	20.97	130.52	5,834.2	-1,077.0	1,191.5	-1,048.4	1.73	-1.60	-1.80
6,144.0	20.72	130.22	5,848.2	-1,080.4	1,195.6	-1,052.0	1.81	-1.67	-2.00
6,159.0	20.45	129.86	5,862.2	-1,083.8	1,199.6	-1,055.6	1.99	-1.80	-2.40
6,174.0	22.30	130.23	5,876.2	-1,087.3	1,203.8	-1,059.3	12.37	12.33	2.47
6,188.8	24.19	131.99	5,889.8	-1,091.2	1,208.2	-1,063.2	13.58	12.74	11.87
6,203.7	23.92	131.47	5,903.4	-1,095.2	1,212.7	-1,067.2	2.31	-1.82	-3.50
6,218.5	23.43	130.70	5,917.0	-1,099.1	1,217.2	-1,071.2	3.91	-3.30	-5.19
6,233.3	22.94	129.89	5,930.6	-1,102.9	1,221.6	-1,075.1	3.94	-3.30	-5.46
6,248.2	22.46	129.14	5,944.3	-1,106.5	1,226.1	-1,079.1	3.78	-3.23	-5.05
6,263.0	22.02	128.54	5,958.0	-1,110.1	1,230.4	-1,083.0	3.34	-2.97	-4.05
6,278.0	21.64	128.32	5,971.9	-1,113.5	1,234.8	-1,086.9	2.59	-2.53	-1.47
6,293.0	21.31	128.29	5,985.9	-1,116.9	1,239.1	-1,090.7	2.20	-2.20	-0.20
6,308.0	21.00	128.36	5,999.9	-1,120.3	1,243.4	-1,094.5	2.07	-2.07	0.47
6,323.0	20.70	128.46	6,013.9	-1,123.6	1,247.5	-1,098.3	2.01	-2.00	0.67
6,338.0	20.40	128.49	6,027.9	-1,126.9	1,251.7	-1,101.9	2.00	-2.00	0.20
6,353.0	21.73	130.89	6,041.9	-1,130.3	1,255.8	-1,105.6	10.57	8.87	16.00
6,368.0	22.77	135.48	6,055.8	-1,134.2	1,259.9	-1,109.2	13.50	6.93	30.60
6,383.0	22.80	136.49	6,069.6	-1,138.4	1,264.0	-1,112.7	2.62	0.20	6.73
6,398.0	22.47	135.96	6,083.5	-1,142.6	1,268.0	-1,116.2	2.59	-2.20	-3.53
6,413.0	22.13	135.37	6,097.4	-1,146.6	1,272.0	-1,119.6	2.71	-2.27	-3.93
6,428.0	21.77	134.77	6,111.3	-1,150.6	1,275.9	-1,123.1	2.83	-2.40	-4.00
6,443.0	22.83	133.67	6,125.2	-1,154.6	1,280.0	-1,126.6	7.59	7.07	-7.33
6,457.8	24.15	134.46	6,138.8	-1,158.7	1,284.2	-1,130.3	9.15	8.90	5.33
6,472.7	23.65	134.05	6,152.3	-1,162.9	1,288.5	-1,134.1	3.55	-3.37	-2.76
6,487.5	23.12	133.63	6,165.9	-1,166.9	1,292.8	-1,137.8	3.75	-3.57	-2.83
6,502.3	22.57	133.23	6,179.6	-1,170.9	1,297.0	-1,141.4	3.85	-3.71	-2.70
6,517.2	22.03	132.83	6,193.3	-1,174.7	1,301.1	-1,145.0	3.78	-3.64	-2.70
6,532.0	21.51	132.47	6,207.1	-1,178.5	1,305.1	-1,148.6	3.62	-3.51	-2.43
6,546.8	21.04	132.19	6,220.9	-1,182.1	1,309.1	-1,152.1	3.24	-3.17	-1.89
6,561.7	20.60	131.95	6,234.8	-1,185.6	1,313.0	-1,155.5	3.02	-2.96	-1.62

Ensign Energy Services Inc.

Survey Report

Company:	Bayswater Exploration & Production, LLC	Local Co-ordinate Reference:	Well Groves Farm S-34-33HC
Project:	SEC.34-T7N-R65W	TVD Reference:	WELL @ 4867.0ft (Original Well Elev)
Site:	Groves Farm 34-L Pad Sec.34-T7N-R65W	MD Reference:	WELL @ 4867.0ft (Original Well Elev)
Well:	Groves Farm S-34-33HC	North Reference:	True
Wellbore:	Groves Farms S-34-33HC Wellbore #1	Survey Calculation Method:	Minimum Curvature
Design:	Groves Farms S-34-33HC Wellbore #1	Database:	US_EDM

Survey

Measured Depth (ft)	Inclination (°)	Azimuth (°)	Vertical Depth (ft)	+N/-S (ft)	+E/-W (ft)	Vertical Section (ft)	Dogleg Rate (°/100usft)	Build Rate (°/100usft)	Turn Rate (°/100usft)
6,576.5	20.17	131.73	6,248.7	-1,189.1	1,316.9	-1,158.9	2.95	-2.90	-1.48
6,591.3	19.73	131.53	6,262.6	-1,192.4	1,320.7	-1,162.2	3.00	-2.97	-1.35
6,606.2	19.27	131.33	6,276.6	-1,195.7	1,324.4	-1,165.5	3.13	-3.10	-1.35
6,621.0	20.17	135.73	6,290.6	-1,199.2	1,328.0	-1,168.7	11.70	6.07	29.67
6,636.0	20.32	138.88	6,304.7	-1,203.0	1,331.5	-1,171.7	7.33	1.00	21.00
6,651.0	19.70	138.72	6,318.8	-1,206.8	1,334.9	-1,174.6	4.15	-4.13	-1.07
6,666.0	19.06	138.55	6,332.9	-1,210.6	1,338.2	-1,177.4	4.28	-4.27	-1.13
6,681.0	18.43	138.40	6,347.1	-1,214.2	1,341.4	-1,180.1	4.21	-4.20	-1.00
6,696.0	17.76	141.08	6,361.4	-1,217.7	1,344.4	-1,182.7	7.12	-4.47	17.87
6,711.0	17.41	148.20	6,375.7	-1,221.4	1,347.0	-1,184.8	14.52	-2.33	47.47
6,725.8	17.75	156.11	6,389.8	-1,225.4	1,349.1	-1,186.4	16.26	2.29	53.34
6,740.7	17.94	160.01	6,403.9	-1,229.6	1,350.8	-1,187.5	8.15	1.28	26.28
6,755.5	17.39	160.08	6,418.1	-1,233.8	1,352.3	-1,188.5	3.71	-3.71	0.47
6,770.3	16.83	160.17	6,432.2	-1,237.9	1,353.8	-1,189.5	3.78	-3.78	0.61
6,785.2	16.55	163.00	6,446.5	-1,242.0	1,355.2	-1,190.3	5.79	-1.89	19.07
6,800.0	17.01	171.19	6,460.7	-1,246.1	1,356.1	-1,190.8	16.23	3.10	55.23
6,815.0	17.66	179.26	6,475.0	-1,250.6	1,356.5	-1,190.6	16.59	4.33	53.80
6,830.0	18.11	184.27	6,489.3	-1,255.2	1,356.3	-1,189.8	10.68	3.00	33.40
6,845.0	17.32	184.49	6,503.5	-1,259.7	1,356.0	-1,188.9	5.29	-5.27	1.47
6,860.0	16.53	184.75	6,517.9	-1,264.1	1,355.6	-1,188.0	5.29	-5.27	1.73
6,875.0	15.74	187.89	6,532.3	-1,268.2	1,355.2	-1,187.1	7.85	-5.27	20.93
6,890.0	14.98	196.39	6,546.8	-1,272.1	1,354.3	-1,185.8	15.83	-5.07	56.67
6,905.0	14.60	206.48	6,561.3	-1,275.6	1,353.0	-1,184.0	17.34	-2.53	67.27
6,920.0	14.81	214.60	6,575.8	-1,278.9	1,351.0	-1,181.6	13.80	1.40	54.13
6,935.0	14.47	214.61	6,590.3	-1,282.0	1,348.9	-1,179.1	2.27	-2.27	0.07
6,950.0	14.17	214.58	6,604.8	-1,285.1	1,346.8	-1,176.6	2.00	-2.00	-0.20
6,965.0	14.45	217.90	6,619.4	-1,288.1	1,344.6	-1,174.1	5.78	1.87	22.13
6,980.0	15.63	226.00	6,633.9	-1,291.0	1,342.0	-1,171.2	16.05	7.87	54.00
6,994.8	17.23	232.53	6,648.1	-1,293.7	1,338.8	-1,167.7	16.46	10.79	44.03
7,009.7	19.16	237.19	6,662.2	-1,296.3	1,335.0	-1,163.6	16.28	13.01	31.40
7,024.5	19.36	237.58	6,676.2	-1,299.0	1,330.9	-1,159.1	1.60	1.35	2.63
7,039.3	19.40	236.99	6,690.2	-1,301.6	1,326.7	-1,154.7	1.35	0.27	-3.98
7,054.2	20.15	237.49	6,704.1	-1,304.4	1,322.5	-1,150.2	5.18	5.05	3.37
7,069.0	22.35	239.67	6,718.0	-1,307.2	1,317.9	-1,145.3	15.76	14.83	14.70
7,084.0	24.55	241.16	6,731.7	-1,310.1	1,312.7	-1,139.8	15.19	14.67	9.93
7,099.0	26.47	243.29	6,745.2	-1,313.1	1,307.0	-1,133.7	14.18	12.80	14.20
7,114.0	26.21	243.07	6,758.7	-1,316.1	1,301.1	-1,127.5	1.85	-1.73	-1.47
7,129.0	25.94	242.87	6,772.2	-1,319.1	1,295.2	-1,121.3	1.89	-1.80	-1.33
7,144.0	26.70	243.46	6,785.6	-1,322.1	1,289.3	-1,115.0	5.36	5.07	3.93
7,159.0	29.00	245.25	6,798.9	-1,325.1	1,283.0	-1,108.3	16.31	15.33	11.93
7,173.8	31.32	247.07	6,811.7	-1,328.1	1,276.1	-1,101.2	16.81	15.64	12.27
7,188.7	33.15	248.55	6,824.2	-1,331.1	1,268.8	-1,093.6	13.43	12.33	9.97
7,203.5	33.07	248.48	6,836.7	-1,334.1	1,261.3	-1,085.7	0.60	-0.54	-0.47

Ensign Energy Services Inc.

Survey Report

Company:	Bayswater Exploration & Production, LLC	Local Co-ordinate Reference:	Well Groves Farm S-34-33HC
Project:	SEC.34-T7N-R65W	TVD Reference:	WELL @ 4867.0ft (Original Well Elev)
Site:	Groves Farm 34-L Pad Sec.34-T7N-R65W	MD Reference:	WELL @ 4867.0ft (Original Well Elev)
Well:	Groves Farm S-34-33HC	North Reference:	True
Wellbore:	Groves Farms S-34-33HC Wellbore #1	Survey Calculation Method:	Minimum Curvature
Design:	Groves Farms S-34-33HC Wellbore #1	Database:	US_EDM

Survey

Measured Depth (ft)	Inclination (°)	Azimuth (°)	Vertical Depth (ft)	+N/-S (ft)	+E/-W (ft)	Vertical Section (ft)	Dogleg Rate (°/100usft)	Build Rate (°/100usft)	Turn Rate (°/100usft)
7,218.3	33.01	248.42	6,849.1	-1,337.1	1,253.8	-1,077.9	0.46	-0.40	-0.40
7,233.2	33.90	248.21	6,861.5	-1,340.1	1,246.2	-1,070.0	6.05	6.00	-1.42
7,248.0	36.15	248.65	6,873.6	-1,343.2	1,238.2	-1,061.7	15.27	15.17	2.97
7,261.0	38.01	250.00	6,884.0	-1,346.0	1,230.9	-1,054.1	15.62	14.31	10.38
7,274.0	39.97	251.28	6,894.1	-1,348.7	1,223.2	-1,046.1	16.30	15.08	9.85
7,287.0	41.91	252.24	6,903.9	-1,351.4	1,215.1	-1,037.8	15.69	14.92	7.38
7,300.0	41.88	252.26	6,913.6	-1,354.0	1,206.8	-1,029.2	0.25	-0.23	0.15
7,313.0	41.68	252.20	6,923.3	-1,356.6	1,198.6	-1,020.7	1.57	-1.54	-0.46
7,326.0	42.74	253.14	6,932.9	-1,359.2	1,190.2	-1,012.1	9.49	8.15	7.23
7,339.0	44.47	254.60	6,942.3	-1,361.7	1,181.6	-1,003.3	15.40	13.31	11.23
7,354.0	46.63	256.31	6,952.8	-1,364.4	1,171.3	-992.6	16.54	14.40	11.40
7,369.0	48.79	257.43	6,962.9	-1,366.9	1,160.5	-981.6	15.42	14.40	7.47
7,384.0	48.67	257.39	6,972.8	-1,369.4	1,149.5	-970.4	0.82	-0.80	-0.27
7,399.0	48.56	257.35	6,982.7	-1,371.9	1,138.5	-959.2	0.76	-0.73	-0.27
7,414.0	49.33	257.96	6,992.6	-1,374.3	1,127.4	-947.9	5.98	5.13	4.07
7,429.0	51.51	259.14	7,002.1	-1,376.6	1,116.1	-936.4	15.75	14.53	7.87
7,443.8	53.82	260.05	7,011.1	-1,378.7	1,104.5	-924.6	16.32	15.58	6.14
7,458.7	56.00	261.74	7,019.7	-1,380.6	1,092.5	-912.5	17.40	14.69	11.39
7,473.5	55.93	261.78	7,028.0	-1,382.4	1,080.3	-900.2	0.52	-0.47	0.27
7,488.3	55.87	261.83	7,036.3	-1,384.1	1,068.2	-887.9	0.49	-0.40	0.34
7,503.2	56.45	262.45	7,044.6	-1,385.8	1,056.0	-875.6	5.23	3.91	4.18
7,518.0	58.23	263.77	7,052.6	-1,387.3	1,043.6	-863.1	14.15	12.00	8.90
7,532.8	60.51	264.69	7,060.1	-1,388.6	1,030.9	-850.4	16.27	15.37	6.20
7,547.7	62.89	265.69	7,067.1	-1,389.7	1,017.9	-837.3	17.10	16.04	6.74
7,562.5	63.27	265.61	7,073.9	-1,390.7	1,004.7	-824.1	2.61	2.56	-0.54
7,577.3	63.31	265.49	7,080.5	-1,391.7	991.5	-810.9	0.77	0.27	-0.81
7,592.2	64.17	265.61	7,087.1	-1,392.7	978.2	-797.6	5.84	5.80	0.81
7,607.0	66.70	266.24	7,093.3	-1,393.7	964.8	-784.1	17.49	17.06	4.25
7,622.0	69.33	266.96	7,098.9	-1,394.5	950.9	-770.2	18.09	17.53	4.80
7,637.0	71.72	268.23	7,103.9	-1,395.1	936.7	-756.1	17.82	15.93	8.47
7,652.0	72.11	267.93	7,108.5	-1,395.6	922.5	-741.9	3.22	2.60	-2.00
7,667.0	72.36	267.64	7,113.1	-1,396.2	908.2	-727.7	2.48	1.67	-1.93
7,682.0	73.43	267.70	7,117.5	-1,396.7	893.9	-713.4	7.14	7.13	0.40
7,697.0	75.88	268.13	7,121.5	-1,397.3	879.4	-699.0	16.57	16.33	2.87
7,711.8	78.43	268.54	7,124.8	-1,397.7	865.0	-684.6	17.40	17.19	2.76
7,726.7	80.97	269.24	7,127.4	-1,398.0	850.4	-670.1	17.73	17.12	4.72
7,741.5	81.34	269.12	7,129.7	-1,398.2	835.7	-655.5	2.62	2.49	-0.81
7,756.3	81.55	269.01	7,131.9	-1,398.4	821.1	-640.9	1.59	1.42	-0.74
7,771.2	82.49	269.21	7,134.0	-1,398.6	806.4	-626.3	6.47	6.33	1.35
7,786.0	85.01	269.90	7,135.6	-1,398.8	791.6	-611.7	17.61	16.99	4.65
7,800.8	86.95	270.28	7,136.6	-1,398.7	776.9	-597.0	13.33	13.08	2.56
7,815.7	87.02	270.23	7,137.4	-1,398.7	762.0	-582.3	0.58	0.47	-0.34
7,830.5	87.08	270.19	7,138.2	-1,398.6	747.2	-567.6	0.49	0.40	-0.27
7,834.6	87.09	270.18	7,138.4	-1,398.6	743.1	-563.6	0.43	0.34	-0.27

Ensign Energy Services Inc.

Survey Report

Company:	Bayswater Exploration & Production, LLC	Local Co-ordinate Reference:	Well Groves Farm S-34-33HC
Project:	SEC.34-T7N-R65W	TVD Reference:	WELL @ 4867.0ft (Original Well Elev)
Site:	Groves Farm 34-L Pad Sec.34-T7N-R65W	MD Reference:	WELL @ 4867.0ft (Original Well Elev)
Well:	Groves Farm S-34-33HC	North Reference:	True
Wellbore:	Groves Farms S-34-33HC Wellbore #1	Survey Calculation Method:	Minimum Curvature
Design:	Groves Farms S-34-33HC Wellbore #1	Database:	US_EDM

Survey

Measured Depth (ft)	Inclination (°)	Azimuth (°)	Vertical Depth (ft)	+N/-S (ft)	+E/-W (ft)	Vertical Section (ft)	Dogleg Rate (°/100usft)	Build Rate (°/100usft)	Turn Rate (°/100usft)
TPZ - 1170'FSL & 150'FEL, Sec.34									
7,845.3	87.13	270.15	7,138.9	-1,398.6	732.4	-552.9	0.43	0.34	-0.27
7,860.2	87.16	270.10	7,139.7	-1,398.5	717.6	-538.2	0.39	0.20	-0.34
7,875.0	87.17	270.04	7,140.4	-1,398.5	702.8	-523.5	0.41	0.07	-0.40
7,890.0	87.16	269.94	7,141.1	-1,398.5	687.8	-508.7	0.67	-0.07	-0.67
7,905.0	87.13	269.83	7,141.9	-1,398.6	672.8	-493.8	0.76	-0.20	-0.73
7,920.0	87.10	269.71	7,142.6	-1,398.6	657.8	-478.9	0.82	-0.20	-0.80
7,935.0	87.06	269.59	7,143.4	-1,398.7	642.9	-464.1	0.84	-0.27	-0.80
7,950.0	87.02	269.47	7,144.2	-1,398.8	627.9	-449.2	0.84	-0.27	-0.80
7,965.0	86.99	269.36	7,145.0	-1,399.0	612.9	-434.3	0.76	-0.20	-0.73
7,980.0	86.97	269.26	7,145.8	-1,399.2	597.9	-419.4	0.68	-0.13	-0.67
7,995.0	86.96	269.18	7,146.6	-1,399.4	582.9	-404.5	0.54	-0.07	-0.53
8,010.0	86.96	269.12	7,147.3	-1,399.6	568.0	-389.6	0.40	0.00	-0.40
8,025.0	86.98	269.06	7,148.1	-1,399.8	553.0	-374.8	0.42	0.13	-0.40
8,040.0	87.83	270.01	7,148.8	-1,399.9	538.0	-359.9	8.49	5.67	6.33
8,055.0	88.81	271.25	7,149.3	-1,399.8	523.0	-345.0	10.53	6.53	8.27
8,069.8	88.96	271.25	7,149.5	-1,399.5	508.2	-330.3	1.01	1.01	0.00
8,084.7	89.13	271.26	7,149.8	-1,399.1	493.4	-315.7	1.15	1.15	0.07
8,099.5	89.31	271.28	7,150.0	-1,398.8	478.5	-301.0	1.22	1.21	0.13
8,114.3	89.51	271.31	7,150.2	-1,398.5	463.7	-286.3	1.36	1.35	0.20
8,129.2	89.70	271.32	7,150.3	-1,398.1	448.9	-271.7	1.28	1.28	0.07
8,144.0	89.88	271.33	7,150.3	-1,397.8	434.0	-257.0	1.22	1.21	0.07
8,158.8	90.03	271.31	7,150.3	-1,397.4	419.2	-242.3	1.02	1.01	-0.13
8,173.7	90.16	271.28	7,150.3	-1,397.1	404.4	-227.6	0.90	0.88	-0.20
8,188.5	90.29	271.25	7,150.2	-1,396.8	389.6	-213.0	0.90	0.88	-0.20
8,203.3	90.42	271.22	7,150.1	-1,396.5	374.7	-198.3	0.90	0.88	-0.20
8,218.2	90.55	271.19	7,150.0	-1,396.1	359.9	-183.6	0.90	0.88	-0.20
8,233.0	90.70	271.19	7,149.9	-1,395.8	345.1	-168.9	1.01	1.01	0.00
8,248.0	90.87	271.23	7,149.7	-1,395.5	330.1	-154.1	1.16	1.13	0.27
8,263.0	91.05	271.28	7,149.4	-1,395.2	315.1	-139.3	1.25	1.20	0.33
8,278.0	91.24	271.34	7,149.1	-1,394.9	300.1	-124.4	1.33	1.27	0.40
8,293.0	91.44	271.41	7,148.7	-1,394.5	285.1	-109.6	1.41	1.33	0.47
8,308.0	91.63	271.48	7,148.3	-1,394.1	270.1	-94.8	1.35	1.27	0.47
8,323.0	90.53	271.81	7,148.1	-1,393.7	255.1	-79.9	7.66	-7.33	2.20
8,337.8	90.73	271.89	7,147.9	-1,393.2	240.3	-65.3	1.45	1.35	0.54
8,352.7	90.91	271.96	7,147.7	-1,392.7	225.5	-50.6	1.30	1.21	0.47
8,367.5	91.09	272.02	7,147.4	-1,392.2	210.6	-36.0	1.28	1.21	0.40
8,382.3	91.25	272.06	7,147.1	-1,391.7	195.8	-21.4	1.11	1.08	0.27
8,397.2	91.38	272.05	7,146.8	-1,391.1	181.0	-6.7	0.88	0.88	-0.07
8,412.0	90.11	272.63	7,146.6	-1,390.5	166.2	7.9	9.41	-8.56	3.91
8,427.0	90.12	272.48	7,146.6	-1,389.9	151.2	22.7	1.00	0.07	-1.00
8,442.0	90.10	272.28	7,146.5	-1,389.2	136.2	37.5	1.34	-0.13	-1.33
8,457.0	90.06	272.06	7,146.5	-1,388.7	121.2	52.3	1.49	-0.27	-1.47

Ensign Energy Services Inc.

Survey Report

Company:	Bayswater Exploration & Production, LLC	Local Co-ordinate Reference:	Well Groves Farm S-34-33HC
Project:	SEC.34-T7N-R65W	TVD Reference:	WELL @ 4867.0ft (Original Well Elev)
Site:	Groves Farm 34-L Pad Sec.34-T7N-R65W	MD Reference:	WELL @ 4867.0ft (Original Well Elev)
Well:	Groves Farm S-34-33HC	North Reference:	True
Wellbore:	Groves Farms S-34-33HC Wellbore #1	Survey Calculation Method:	Minimum Curvature
Design:	Groves Farms S-34-33HC Wellbore #1	Database:	US_EDM

Survey

Measured Depth (ft)	Inclination (°)	Azimuth (°)	Vertical Depth (ft)	+N/-S (ft)	+E/-W (ft)	Vertical Section (ft)	Dogleg Rate (°/100usft)	Build Rate (°/100usft)	Turn Rate (°/100usft)
8,472.0	90.03	271.85	7,146.5	-1,388.2	106.2	67.1	1.41	-0.20	-1.40
8,487.0	89.50	271.42	7,146.6	-1,387.7	91.2	81.9	4.55	-3.53	-2.87
8,502.0	88.19	270.65	7,146.9	-1,387.5	76.2	96.8	10.13	-8.73	-5.13
8,517.0	88.29	270.58	7,147.3	-1,387.3	61.2	111.6	0.81	0.67	-0.47
8,532.0	88.42	270.55	7,147.8	-1,387.1	46.3	126.5	0.89	0.87	-0.20
8,547.0	88.56	270.54	7,148.2	-1,387.0	31.3	141.3	0.94	0.93	-0.07
8,562.0	88.73	270.53	7,148.5	-1,386.9	16.3	156.2	1.14	1.13	-0.07
8,577.0	88.89	270.52	7,148.8	-1,386.7	1.3	171.1	1.07	1.07	-0.07
8,592.0	89.07	270.51	7,149.1	-1,386.6	-13.7	185.9	1.20	1.20	-0.07
8,606.8	89.24	270.47	7,149.3	-1,386.5	-28.6	200.6	1.18	1.15	-0.27
8,621.7	89.42	270.42	7,149.5	-1,386.3	-43.4	215.3	1.26	1.21	-0.34
8,636.5	89.58	270.37	7,149.6	-1,386.2	-58.2	230.0	1.13	1.08	-0.34
8,651.3	89.73	270.32	7,149.7	-1,386.2	-73.1	244.7	1.07	1.01	-0.34
8,666.2	89.85	270.26	7,149.8	-1,386.1	-87.9	259.5	0.90	0.81	-0.40
8,681.0	89.93	270.21	7,149.8	-1,386.0	-102.7	274.2	0.64	0.54	-0.34
8,696.0	89.94	270.17	7,149.8	-1,386.0	-117.7	289.0	0.27	0.07	-0.27
8,711.0	89.90	270.14	7,149.8	-1,385.9	-132.7	303.9	0.33	-0.27	-0.20
8,726.0	89.85	270.11	7,149.9	-1,385.9	-147.7	318.8	0.39	-0.33	-0.20
8,741.0	89.79	270.09	7,149.9	-1,385.9	-162.7	333.7	0.42	-0.40	-0.13
8,756.0	89.76	270.06	7,150.0	-1,385.9	-177.7	348.6	0.28	-0.20	-0.20
8,771.0	88.64	271.27	7,150.2	-1,385.7	-192.7	363.4	10.99	-7.47	8.07
8,785.8	88.67	271.22	7,150.5	-1,385.4	-207.5	378.1	0.39	0.20	-0.34
8,800.7	88.71	271.18	7,150.9	-1,385.0	-222.4	392.8	0.38	0.27	-0.27
8,815.5	88.78	271.14	7,151.2	-1,384.7	-237.2	407.4	0.54	0.47	-0.27
8,830.3	88.85	271.09	7,151.5	-1,384.5	-252.0	422.1	0.58	0.47	-0.34
8,845.2	88.93	271.05	7,151.8	-1,384.2	-266.9	436.8	0.60	0.54	-0.27
8,860.0	89.03	271.01	7,152.0	-1,383.9	-281.7	451.5	0.73	0.67	-0.27
8,875.0	89.15	270.98	7,152.3	-1,383.7	-296.7	466.3	0.82	0.80	-0.20
8,890.0	89.27	270.96	7,152.5	-1,383.4	-311.7	481.2	0.81	0.80	-0.13
8,905.0	89.41	270.95	7,152.7	-1,383.1	-326.7	496.0	0.94	0.93	-0.07
8,920.0	89.56	270.95	7,152.8	-1,382.9	-341.7	510.9	1.00	1.00	0.00
8,935.0	89.72	270.97	7,152.9	-1,382.6	-356.7	525.7	1.07	1.07	0.13
8,950.0	89.90	271.03	7,152.9	-1,382.4	-371.7	540.6	1.26	1.20	0.40
8,964.8	90.10	271.13	7,152.9	-1,382.1	-386.5	555.2	1.51	1.35	0.67
8,979.7	90.31	271.26	7,152.9	-1,381.8	-401.3	569.9	1.66	1.42	0.88
8,994.5	90.52	271.39	7,152.8	-1,381.5	-416.2	584.6	1.67	1.42	0.88
9,009.3	90.72	271.52	7,152.6	-1,381.1	-431.0	599.3	1.61	1.35	0.88
9,024.2	90.90	271.61	7,152.4	-1,380.7	-445.8	613.9	1.36	1.21	0.61
9,039.0	88.96	272.90	7,152.4	-1,380.1	-460.6	628.6	15.71	-13.08	8.70
9,053.8	88.79	273.49	7,152.7	-1,379.3	-475.4	643.1	4.14	-1.15	3.98
9,068.7	88.85	273.44	7,153.0	-1,378.4	-490.2	657.7	0.53	0.40	-0.34
9,083.5	88.90	273.37	7,153.3	-1,377.5	-505.0	672.3	0.58	0.34	-0.47
9,098.3	88.96	273.30	7,153.6	-1,376.6	-519.8	686.9	0.62	0.40	-0.47
9,113.2	89.04	273.23	7,153.8	-1,375.8	-534.7	701.5	0.72	0.54	-0.47

Ensign Energy Services Inc.

Survey Report

Company:	Bayswater Exploration & Production, LLC	Local Co-ordinate Reference:	Well Groves Farm S-34-33HC
Project:	SEC.34-T7N-R65W	TVD Reference:	WELL @ 4867.0ft (Original Well Elev)
Site:	Groves Farm 34-L Pad Sec.34-T7N-R65W	MD Reference:	WELL @ 4867.0ft (Original Well Elev)
Well:	Groves Farm S-34-33HC	North Reference:	True
Wellbore:	Groves Farms S-34-33HC Wellbore #1	Survey Calculation Method:	Minimum Curvature
Design:	Groves Farms S-34-33HC Wellbore #1	Database:	US_EDM

Survey

Measured Depth (ft)	Inclination (°)	Azimuth (°)	Vertical Depth (ft)	+N/-S (ft)	+E/-W (ft)	Vertical Section (ft)	Dogleg Rate (°/100usft)	Build Rate (°/100usft)	Turn Rate (°/100usft)
9,128.0	89.16	273.19	7,154.1	-1,374.9	-549.5	716.1	0.85	0.81	-0.27
9,143.0	89.35	273.19	7,154.3	-1,374.1	-564.4	730.8	1.27	1.27	0.00
9,158.0	89.59	273.22	7,154.4	-1,373.3	-579.4	745.6	1.61	1.60	0.20
9,173.0	89.84	273.27	7,154.5	-1,372.4	-594.4	760.3	1.70	1.67	0.33
9,188.0	90.10	273.34	7,154.5	-1,371.6	-609.4	775.1	1.80	1.73	0.47
9,203.0	90.34	273.42	7,154.4	-1,370.7	-624.3	789.8	1.69	1.60	0.53
9,218.0	90.53	273.52	7,154.3	-1,369.8	-639.3	804.6	1.43	1.27	0.67
9,232.8	90.65	273.63	7,154.2	-1,368.8	-654.1	819.1	1.10	0.81	0.74
9,247.7	90.73	273.75	7,154.0	-1,367.9	-668.9	833.7	0.97	0.54	0.81
9,262.5	90.79	273.88	7,153.8	-1,366.9	-683.7	848.3	0.97	0.40	0.88
9,277.3	90.84	273.99	7,153.6	-1,365.9	-698.5	862.8	0.81	0.34	0.74
9,292.2	90.89	274.09	7,153.4	-1,364.8	-713.3	877.4	0.75	0.34	0.67
9,307.0	89.07	273.87	7,153.4	-1,363.8	-728.1	891.9	12.36	-12.27	-1.48
9,322.0	88.34	273.50	7,153.7	-1,362.8	-743.1	906.7	5.46	-4.87	-2.47
9,337.0	88.46	273.50	7,154.1	-1,361.9	-758.0	921.4	0.80	0.80	0.00
9,352.0	88.59	273.49	7,154.5	-1,361.0	-773.0	936.1	0.87	0.87	-0.07
9,367.0	88.71	273.47	7,154.9	-1,360.1	-788.0	950.9	0.81	0.80	-0.13
9,382.0	88.83	273.43	7,155.2	-1,359.2	-802.9	965.6	0.84	0.80	-0.27
9,397.0	88.93	273.37	7,155.5	-1,358.3	-817.9	980.4	0.78	0.67	-0.40
9,412.0	89.00	273.29	7,155.7	-1,357.4	-832.9	995.1	0.71	0.47	-0.53
9,427.0	89.05	273.20	7,156.0	-1,356.6	-847.9	1,009.9	0.69	0.33	-0.60
9,442.0	89.10	273.11	7,156.2	-1,355.8	-862.8	1,024.6	0.69	0.33	-0.60
9,457.0	89.15	273.04	7,156.5	-1,355.0	-877.8	1,039.4	0.57	0.33	-0.47
9,472.0	89.23	273.00	7,156.7	-1,354.2	-892.8	1,054.1	0.60	0.53	-0.27
9,487.0	89.32	272.06	7,156.9	-1,353.5	-907.8	1,068.9	6.29	0.60	-6.27
9,501.8	89.45	271.16	7,157.0	-1,353.1	-922.6	1,083.6	6.13	0.88	-6.07
9,516.7	89.66	271.28	7,157.2	-1,352.8	-937.4	1,098.3	1.63	1.42	0.81
9,531.5	89.89	271.44	7,157.2	-1,352.4	-952.3	1,112.9	1.89	1.55	1.08
9,546.3	90.12	271.60	7,157.2	-1,352.0	-967.1	1,127.6	1.89	1.55	1.08
9,561.2	90.33	271.76	7,157.1	-1,351.6	-981.9	1,142.3	1.78	1.42	1.08
9,576.0	90.50	271.90	7,157.0	-1,351.1	-996.7	1,156.9	1.48	1.15	0.94
9,591.0	90.60	271.98	7,156.9	-1,350.6	-1,011.7	1,171.7	0.85	0.67	0.53
9,606.0	90.66	272.04	7,156.7	-1,350.1	-1,026.7	1,186.5	0.57	0.40	0.40
9,621.0	90.70	272.07	7,156.6	-1,349.6	-1,041.7	1,201.3	0.33	0.27	0.20
9,636.0	90.73	272.08	7,156.4	-1,349.0	-1,056.7	1,216.1	0.21	0.20	0.07
9,651.0	90.77	272.06	7,156.2	-1,348.5	-1,071.7	1,230.9	0.30	0.27	-0.13
9,666.0	89.09	271.11	7,156.2	-1,348.1	-1,086.7	1,245.8	12.87	-11.20	-6.33
9,680.8	88.79	270.82	7,156.5	-1,347.8	-1,101.5	1,260.4	2.81	-2.02	-1.96
9,695.7	88.91	270.70	7,156.8	-1,347.6	-1,116.3	1,275.1	1.14	0.81	-0.81
9,710.5	89.03	270.58	7,157.0	-1,347.4	-1,131.2	1,289.8	1.14	0.81	-0.81
9,725.3	89.16	270.45	7,157.3	-1,347.3	-1,146.0	1,304.5	1.24	0.88	-0.88
9,740.2	89.27	270.33	7,157.5	-1,347.2	-1,160.8	1,319.2	1.10	0.74	-0.81
9,755.0	89.37	270.24	7,157.6	-1,347.1	-1,175.7	1,333.9	0.91	0.67	-0.61

Ensign Energy Services Inc.

Survey Report

Company:	Bayswater Exploration & Production, LLC	Local Co-ordinate Reference:	Well Groves Farm S-34-33HC
Project:	SEC.34-T7N-R65W	TVD Reference:	WELL @ 4867.0ft (Original Well Elev)
Site:	Groves Farm 34-L Pad Sec.34-T7N-R65W	MD Reference:	WELL @ 4867.0ft (Original Well Elev)
Well:	Groves Farm S-34-33HC	North Reference:	True
Wellbore:	Groves Farms S-34-33HC Wellbore #1	Survey Calculation Method:	Minimum Curvature
Design:	Groves Farms S-34-33HC Wellbore #1	Database:	US_EDM

Survey									
Measured Depth (ft)	Inclination (°)	Azimuth (°)	Vertical Depth (ft)	+N/-S (ft)	+E/-W (ft)	Vertical Section (ft)	Dogleg Rate (°/100usft)	Build Rate (°/100usft)	Turn Rate (°/100usft)
9,770.0	89.44	270.20	7,157.8	-1,347.1	-1,190.7	1,348.8	0.54	0.47	-0.27
9,785.0	89.49	270.19	7,157.9	-1,347.0	-1,205.7	1,363.7	0.34	0.33	-0.07
9,800.0	89.53	270.20	7,158.1	-1,347.0	-1,220.7	1,378.6	0.27	0.27	0.07
9,815.0	89.57	270.21	7,158.2	-1,346.9	-1,235.7	1,393.5	0.27	0.27	0.07
9,830.0	89.61	270.22	7,158.3	-1,346.9	-1,250.7	1,408.3	0.27	0.27	0.07
9,845.0	89.67	270.22	7,158.4	-1,346.8	-1,265.7	1,423.2	0.40	0.40	0.00
9,859.8	89.76	270.20	7,158.5	-1,346.8	-1,280.5	1,437.9	0.62	0.61	-0.13
9,874.7	89.86	270.16	7,158.5	-1,346.7	-1,295.3	1,452.6	0.73	0.67	-0.27
9,889.5	89.97	270.11	7,158.5	-1,346.7	-1,310.2	1,467.3	0.81	0.74	-0.34
9,904.3	90.08	270.05	7,158.5	-1,346.7	-1,325.0	1,482.1	0.84	0.74	-0.40
9,919.2	90.18	269.99	7,158.5	-1,346.6	-1,339.8	1,496.8	0.79	0.67	-0.40
9,934.0	90.27	269.92	7,158.4	-1,346.7	-1,354.7	1,511.5	0.77	0.61	-0.47
9,949.0	90.34	269.85	7,158.4	-1,346.7	-1,369.7	1,526.4	0.66	0.47	-0.47
9,964.0	90.39	269.77	7,158.3	-1,346.7	-1,384.7	1,541.3	0.63	0.33	-0.53
9,979.0	90.45	269.70	7,158.1	-1,346.8	-1,399.7	1,556.2	0.61	0.40	-0.47
9,994.0	90.51	269.64	7,158.0	-1,346.9	-1,414.7	1,571.1	0.57	0.40	-0.40
10,009.0	90.59	269.60	7,157.9	-1,347.0	-1,429.7	1,586.0	0.60	0.53	-0.27
10,024.0	89.85	271.01	7,157.8	-1,346.9	-1,444.7	1,600.8	10.62	-4.93	9.40
10,038.8	89.51	271.77	7,157.9	-1,346.6	-1,459.5	1,615.5	5.61	-2.29	5.12
10,053.7	89.74	271.86	7,158.0	-1,346.1	-1,474.3	1,630.2	1.66	1.55	0.61
10,068.5	89.97	271.96	7,158.0	-1,345.6	-1,489.1	1,644.8	1.69	1.55	0.67
10,083.3	90.19	272.08	7,158.0	-1,345.1	-1,504.0	1,659.4	1.69	1.48	0.81
10,098.2	90.35	272.18	7,157.9	-1,344.5	-1,518.8	1,674.1	1.27	1.08	0.67
10,113.0	90.41	272.25	7,157.8	-1,343.9	-1,533.6	1,688.7	0.62	0.40	0.47
10,127.8	90.28	272.26	7,157.8	-1,343.4	-1,548.4	1,703.3	0.88	-0.88	0.07
10,142.7	90.05	272.25	7,157.7	-1,342.8	-1,563.2	1,718.0	1.55	-1.55	-0.07
10,157.5	89.77	272.22	7,157.7	-1,342.2	-1,578.1	1,732.6	1.90	-1.89	-0.20
10,172.3	89.47	272.18	7,157.8	-1,341.6	-1,592.9	1,747.3	2.04	-2.02	-0.27
10,187.2	89.20	272.13	7,158.0	-1,341.1	-1,607.7	1,761.9	1.85	-1.82	-0.34
10,202.0	88.99	272.10	7,158.2	-1,340.5	-1,622.5	1,776.5	1.43	-1.42	-0.20
10,216.8	88.76	272.13	7,158.5	-1,340.0	-1,637.3	1,791.2	1.56	-1.55	0.20
10,231.7	88.76	272.12	7,158.9	-1,339.4	-1,652.2	1,805.8	0.07	0.00	-0.07
10,246.5	88.80	272.12	7,159.2	-1,338.9	-1,667.0	1,820.4	0.27	0.27	0.00
10,261.3	88.86	272.12	7,159.5	-1,338.3	-1,681.8	1,835.1	0.40	0.40	0.00
10,276.2	88.94	272.12	7,159.8	-1,337.8	-1,696.6	1,849.7	0.54	0.54	0.00
10,291.0	89.01	272.11	7,160.0	-1,337.2	-1,711.5	1,864.4	0.48	0.47	-0.07
10,306.0	89.07	272.09	7,160.3	-1,336.7	-1,726.4	1,879.2	0.42	0.40	-0.13
10,321.0	89.11	272.06	7,160.5	-1,336.1	-1,741.4	1,894.0	0.33	0.27	-0.20
10,336.0	89.15	272.03	7,160.7	-1,335.6	-1,756.4	1,908.8	0.33	0.27	-0.20
10,351.0	89.19	272.00	7,161.0	-1,335.1	-1,771.4	1,923.6	0.33	0.27	-0.20
10,366.0	89.23	271.96	7,161.2	-1,334.6	-1,786.4	1,938.4	0.38	0.27	-0.27
10,381.0	89.28	271.92	7,161.4	-1,334.0	-1,801.4	1,953.2	0.43	0.33	-0.27
10,395.8	89.33	271.88	7,161.5	-1,333.6	-1,816.2	1,967.8	0.43	0.34	-0.27

Ensign Energy Services Inc.

Survey Report

Company:	Bayswater Exploration & Production, LLC	Local Co-ordinate Reference:	Well Groves Farm S-34-33HC
Project:	SEC.34-T7N-R65W	TVD Reference:	WELL @ 4867.0ft (Original Well Elev)
Site:	Groves Farm 34-L Pad Sec.34-T7N-R65W	MD Reference:	WELL @ 4867.0ft (Original Well Elev)
Well:	Groves Farm S-34-33HC	North Reference:	True
Wellbore:	Groves Farms S-34-33HC Wellbore #1	Survey Calculation Method:	Minimum Curvature
Design:	Groves Farms S-34-33HC Wellbore #1	Database:	US_EDM

Survey										
Measured Depth (ft)	Inclination (°)	Azimuth (°)	Vertical Depth (ft)	+N/-S (ft)	+E/-W (ft)	Vertical Section (ft)	Dogleg Rate (°/100usft)	Build Rate (°/100usft)	Turn Rate (°/100usft)	
10,410.7	89.39	271.84	7,161.7	-1,333.1	-1,831.0	1,982.5	0.49	0.40	-0.27	
10,425.5	89.45	271.79	7,161.9	-1,332.6	-1,845.9	1,997.1	0.53	0.40	-0.34	
10,440.3	89.51	271.75	7,162.0	-1,332.1	-1,860.7	2,011.8	0.49	0.40	-0.27	
10,455.2	89.56	271.71	7,162.1	-1,331.7	-1,875.5	2,026.5	0.43	0.34	-0.27	
10,470.0	89.61	271.68	7,162.2	-1,331.3	-1,890.3	2,041.1	0.39	0.34	-0.20	
10,484.8	89.64	271.66	7,162.3	-1,330.8	-1,905.2	2,055.8	0.24	0.20	-0.13	
10,499.7	89.67	271.64	7,162.4	-1,330.4	-1,920.0	2,070.4	0.24	0.20	-0.13	
10,514.5	89.69	271.63	7,162.5	-1,330.0	-1,934.8	2,085.1	0.15	0.13	-0.07	
10,529.3	89.72	271.62	7,162.6	-1,329.6	-1,949.6	2,099.7	0.21	0.20	-0.07	
10,544.2	89.75	271.61	7,162.6	-1,329.1	-1,964.5	2,114.4	0.21	0.20	-0.07	
10,559.0	88.44	271.91	7,162.9	-1,328.7	-1,979.3	2,129.1	9.06	-8.83	2.02	
10,573.8	88.50	271.87	7,163.3	-1,328.2	-1,994.1	2,143.7	0.49	0.40	-0.27	
10,588.7	88.56	271.83	7,163.6	-1,327.7	-2,008.9	2,158.4	0.49	0.40	-0.27	
10,603.5	88.62	271.79	7,164.0	-1,327.2	-2,023.8	2,173.0	0.49	0.40	-0.27	
10,618.3	88.70	271.74	7,164.4	-1,326.8	-2,038.6	2,187.6	0.64	0.54	-0.34	
10,633.2	88.77	271.70	7,164.7	-1,326.3	-2,053.4	2,202.3	0.54	0.47	-0.27	
10,648.0	88.85	271.64	7,165.0	-1,325.9	-2,068.2	2,217.0	0.67	0.54	-0.40	
10,663.0	88.93	271.59	7,165.3	-1,325.5	-2,083.2	2,231.8	0.63	0.53	-0.33	
10,678.0	89.01	271.53	7,165.6	-1,325.1	-2,098.2	2,246.6	0.67	0.53	-0.40	
10,693.0	89.10	271.48	7,165.8	-1,324.7	-2,113.2	2,261.4	0.69	0.60	-0.33	
10,708.0	89.19	271.43	7,166.0	-1,324.3	-2,128.2	2,276.3	0.69	0.60	-0.33	
10,723.0	89.29	271.39	7,166.2	-1,323.9	-2,143.2	2,291.1	0.72	0.67	-0.27	
10,738.0	89.39	271.37	7,166.4	-1,323.6	-2,158.2	2,305.9	0.68	0.67	-0.13	
10,753.0	89.51	271.37	7,166.5	-1,323.2	-2,173.2	2,320.8	0.80	0.80	0.00	
10,768.0	89.63	271.38	7,166.7	-1,322.9	-2,188.2	2,335.6	0.80	0.80	0.07	
10,783.0	89.77	271.41	7,166.7	-1,322.5	-2,203.2	2,350.4	0.95	0.93	0.20	
10,798.0	89.92	271.45	7,166.8	-1,322.1	-2,218.2	2,365.3	1.03	1.00	0.27	
10,813.0	90.08	271.50	7,166.8	-1,321.7	-2,233.2	2,380.1	1.12	1.07	0.33	
10,828.0	88.91	271.61	7,166.9	-1,321.3	-2,248.2	2,394.9	7.83	-7.80	0.73	
10,843.0	89.15	271.71	7,167.2	-1,320.9	-2,263.1	2,409.7	1.73	1.60	0.67	
10,858.0	89.40	271.82	7,167.3	-1,320.4	-2,278.1	2,424.6	1.82	1.67	0.73	
10,873.0	89.67	271.92	7,167.5	-1,319.9	-2,293.1	2,439.4	1.92	1.80	0.67	
10,888.0	89.92	272.02	7,167.5	-1,319.4	-2,308.1	2,454.2	1.80	1.67	0.67	
10,903.0	90.15	272.09	7,167.5	-1,318.9	-2,323.1	2,469.0	1.60	1.53	0.47	
10,918.0	90.32	272.10	7,167.5	-1,318.3	-2,338.1	2,483.8	1.14	1.13	0.07	
10,932.8	90.40	272.03	7,167.4	-1,317.8	-2,352.9	2,498.4	0.72	0.54	-0.47	
10,947.7	90.43	271.91	7,167.3	-1,317.3	-2,367.8	2,513.1	0.83	0.20	-0.81	
10,962.5	90.43	271.77	7,167.1	-1,316.8	-2,382.6	2,527.7	0.94	0.00	-0.94	
10,977.3	90.43	271.63	7,167.0	-1,316.4	-2,397.4	2,542.4	0.94	0.00	-0.94	
10,992.2	89.86	271.62	7,167.0	-1,316.0	-2,412.2	2,557.1	3.84	-3.84	-0.07	
11,007.0	88.60	271.79	7,167.2	-1,315.5	-2,427.1	2,571.7	8.57	-8.50	1.15	
11,021.8	88.65	271.71	7,167.5	-1,315.1	-2,441.9	2,586.4	0.64	0.34	-0.54	
11,036.7	88.70	271.65	7,167.9	-1,314.6	-2,456.7	2,601.0	0.53	0.34	-0.40	
11,051.5	88.76	271.59	7,168.2	-1,314.2	-2,471.5	2,615.7	0.57	0.40	-0.40	

Ensign Energy Services Inc.

Survey Report

Company:	Bayswater Exploration & Production, LLC	Local Co-ordinate Reference:	Well Groves Farm S-34-33HC
Project:	SEC.34-T7N-R65W	TVD Reference:	WELL @ 4867.0ft (Original Well Elev)
Site:	Groves Farm 34-L Pad Sec.34-T7N-R65W	MD Reference:	WELL @ 4867.0ft (Original Well Elev)
Well:	Groves Farm S-34-33HC	North Reference:	True
Wellbore:	Groves Farms S-34-33HC Wellbore #1	Survey Calculation Method:	Minimum Curvature
Design:	Groves Farms S-34-33HC Wellbore #1	Database:	US_EDM

Survey

Measured Depth (ft)	Inclination (°)	Azimuth (°)	Vertical Depth (ft)	+N/-S (ft)	+E/-W (ft)	Vertical Section (ft)	Dogleg Rate (°/100usft)	Build Rate (°/100usft)	Turn Rate (°/100usft)
11,066.3	88.83	271.54	7,168.5	-1,313.8	-2,486.3	2,630.3	0.58	0.47	-0.34
11,081.2	88.91	271.50	7,168.8	-1,313.4	-2,501.2	2,645.0	0.60	0.54	-0.27
11,096.0	88.99	271.46	7,169.1	-1,313.0	-2,516.0	2,659.7	0.60	0.54	-0.27
11,110.8	89.08	271.44	7,169.3	-1,312.7	-2,530.8	2,674.3	0.62	0.61	-0.13
11,125.7	89.18	271.43	7,169.6	-1,312.3	-2,545.7	2,689.0	0.68	0.67	-0.07
11,140.5	89.27	271.43	7,169.8	-1,311.9	-2,560.5	2,703.7	0.61	0.61	0.00
11,155.3	89.35	271.43	7,169.9	-1,311.5	-2,575.3	2,718.3	0.54	0.54	0.00
11,170.2	89.42	271.45	7,170.1	-1,311.2	-2,590.1	2,733.0	0.49	0.47	0.13
11,185.0	89.46	271.48	7,170.3	-1,310.8	-2,605.0	2,747.7	0.34	0.27	0.20
11,199.8	89.45	271.54	7,170.4	-1,310.4	-2,619.8	2,762.3	0.41	-0.07	0.40
11,214.7	89.41	271.61	7,170.5	-1,310.0	-2,634.6	2,777.0	0.54	-0.27	0.47
11,229.5	89.36	271.69	7,170.7	-1,309.6	-2,649.4	2,791.6	0.64	-0.34	0.54
11,244.3	89.31	271.76	7,170.9	-1,309.1	-2,664.3	2,806.3	0.58	-0.34	0.47
11,259.2	89.26	271.81	7,171.1	-1,308.7	-2,679.1	2,821.0	0.48	-0.34	0.34
11,274.0	88.72	272.01	7,171.3	-1,308.2	-2,693.9	2,835.6	3.88	-3.64	1.35
11,289.0	88.70	271.98	7,171.7	-1,307.6	-2,708.9	2,850.4	0.24	-0.13	-0.20
11,304.0	88.70	271.93	7,172.0	-1,307.1	-2,723.9	2,865.2	0.33	0.00	-0.33
11,319.0	88.71	271.86	7,172.3	-1,306.6	-2,738.9	2,880.0	0.47	0.07	-0.47
11,334.0	88.73	271.79	7,172.7	-1,306.2	-2,753.9	2,894.8	0.49	0.13	-0.47
11,349.0	88.76	271.71	7,173.0	-1,305.7	-2,768.9	2,909.6	0.57	0.20	-0.53
11,364.0	88.81	271.63	7,173.3	-1,305.3	-2,783.8	2,924.5	0.63	0.33	-0.53
11,379.0	88.89	271.57	7,173.6	-1,304.8	-2,798.8	2,939.3	0.67	0.53	-0.40
11,394.0	88.98	271.51	7,173.9	-1,304.4	-2,813.8	2,954.1	0.72	0.60	-0.40
11,409.0	89.09	271.46	7,174.2	-1,304.0	-2,828.8	2,968.9	0.81	0.73	-0.33
11,424.0	89.21	271.42	7,174.4	-1,303.7	-2,843.8	2,983.8	0.84	0.80	-0.27
11,439.0	89.34	271.40	7,174.6	-1,303.3	-2,858.8	2,998.6	0.88	0.87	-0.13
11,454.0	89.48	271.39	7,174.7	-1,302.9	-2,873.8	3,013.4	0.94	0.93	-0.07
11,468.8	89.64	271.42	7,174.8	-1,302.6	-2,888.6	3,028.1	1.10	1.08	0.20
11,483.7	89.81	271.46	7,174.9	-1,302.2	-2,903.5	3,042.8	1.18	1.15	0.27
11,498.5	89.98	271.51	7,174.9	-1,301.8	-2,918.3	3,057.4	1.19	1.15	0.34
11,513.3	90.15	271.55	7,174.9	-1,301.4	-2,933.1	3,072.1	1.18	1.15	0.27
11,528.2	90.29	271.58	7,174.9	-1,301.0	-2,948.0	3,086.8	0.96	0.94	0.20
11,543.0	89.09	272.11	7,174.9	-1,300.5	-2,962.8	3,101.4	8.85	-8.09	3.57
11,557.8	89.17	272.06	7,175.2	-1,300.0	-2,977.6	3,116.1	0.64	0.54	-0.34
11,572.7	89.23	272.00	7,175.4	-1,299.5	-2,992.4	3,130.7	0.57	0.40	-0.40
11,587.5	89.28	271.92	7,175.6	-1,299.0	-3,007.2	3,145.3	0.64	0.34	-0.54
11,602.3	89.33	271.85	7,175.7	-1,298.5	-3,022.1	3,160.0	0.58	0.34	-0.47
11,617.2	89.38	271.78	7,175.9	-1,298.0	-3,036.9	3,174.6	0.58	0.34	-0.47
11,632.0	89.46	271.73	7,176.1	-1,297.6	-3,051.7	3,189.3	0.64	0.54	-0.34
11,646.8	89.56	271.72	7,176.2	-1,297.1	-3,066.5	3,204.0	0.68	0.67	-0.07
11,661.7	89.69	271.73	7,176.3	-1,296.7	-3,081.4	3,218.6	0.88	0.88	0.07
11,676.5	89.82	271.76	7,176.3	-1,296.2	-3,096.2	3,233.3	0.90	0.88	0.20
11,691.3	89.95	271.81	7,176.4	-1,295.7	-3,111.0	3,247.9	0.94	0.88	0.34

Ensign Energy Services Inc.

Survey Report

Company:	Bayswater Exploration & Production, LLC	Local Co-ordinate Reference:	Well Groves Farm S-34-33HC
Project:	SEC.34-T7N-R65W	TVD Reference:	WELL @ 4867.0ft (Original Well Elev)
Site:	Groves Farm 34-L Pad Sec.34-T7N-R65W	MD Reference:	WELL @ 4867.0ft (Original Well Elev)
Well:	Groves Farm S-34-33HC	North Reference:	True
Wellbore:	Groves Farms S-34-33HC Wellbore #1	Survey Calculation Method:	Minimum Curvature
Design:	Groves Farms S-34-33HC Wellbore #1	Database:	US_EDM

Survey									
Measured Depth (ft)	Inclination (°)	Azimuth (°)	Vertical Depth (ft)	+N/-S (ft)	+E/-W (ft)	Vertical Section (ft)	Dogleg Rate (°/100usft)	Build Rate (°/100usft)	Turn Rate (°/100usft)
11,706.2	90.08	271.88	7,176.4	-1,295.3	-3,125.8	3,262.6	0.99	0.88	0.47
11,721.0	90.20	271.98	7,176.3	-1,294.8	-3,140.7	3,277.2	1.05	0.81	0.67
11,736.0	90.30	272.11	7,176.3	-1,294.2	-3,155.7	3,292.0	1.09	0.67	0.87
11,751.0	90.39	272.26	7,176.2	-1,293.7	-3,170.6	3,306.8	1.17	0.60	1.00
11,766.0	90.47	272.42	7,176.1	-1,293.1	-3,185.6	3,321.6	1.19	0.53	1.07
11,781.0	90.53	272.56	7,175.9	-1,292.4	-3,200.6	3,336.4	1.02	0.40	0.93
11,796.0	90.59	272.69	7,175.8	-1,291.7	-3,215.6	3,351.2	0.95	0.40	0.87
11,811.0	89.23	272.59	7,175.8	-1,291.0	-3,230.6	3,366.0	9.09	-9.07	-0.67
11,825.8	88.69	272.58	7,176.1	-1,290.4	-3,245.4	3,380.6	3.64	-3.64	-0.07
11,840.7	88.71	272.60	7,176.4	-1,289.7	-3,260.2	3,395.2	0.19	0.13	0.13
11,855.5	88.73	272.60	7,176.8	-1,289.0	-3,275.0	3,409.8	0.13	0.13	0.00
11,870.3	88.76	272.60	7,177.1	-1,288.3	-3,289.8	3,424.4	0.20	0.20	0.00
11,885.2	88.79	272.59	7,177.4	-1,287.7	-3,304.7	3,439.1	0.21	0.20	-0.07
11,900.0	88.84	272.59	7,177.7	-1,287.0	-3,319.5	3,453.7	0.34	0.34	0.00
11,914.8	88.92	272.59	7,178.0	-1,286.3	-3,334.3	3,468.3	0.54	0.54	0.00
11,929.7	89.03	272.59	7,178.3	-1,285.7	-3,349.1	3,482.9	0.74	0.74	0.00
11,944.5	89.14	272.60	7,178.5	-1,285.0	-3,363.9	3,497.5	0.74	0.74	0.07
11,959.3	89.26	272.62	7,178.7	-1,284.3	-3,378.7	3,512.1	0.82	0.81	0.13
11,974.2	89.39	272.64	7,178.9	-1,283.6	-3,393.6	3,526.8	0.89	0.88	0.13
11,989.0	89.51	272.67	7,179.0	-1,282.9	-3,408.4	3,541.4	0.83	0.81	0.20
12,004.0	89.62	272.72	7,179.1	-1,282.2	-3,423.4	3,556.2	0.81	0.73	0.33
12,019.0	89.73	272.78	7,179.2	-1,281.5	-3,438.3	3,570.9	0.84	0.73	0.40
12,034.0	89.84	272.84	7,179.3	-1,280.8	-3,453.3	3,585.7	0.84	0.73	0.40
12,049.0	89.94	272.90	7,179.3	-1,280.0	-3,468.3	3,600.5	0.78	0.67	0.40
12,064.0	90.04	272.95	7,179.3	-1,279.3	-3,483.3	3,615.3	0.75	0.67	0.33
12,079.0	88.86	272.49	7,179.4	-1,278.6	-3,498.3	3,630.0	8.44	-7.87	-3.07
12,094.0	88.94	272.51	7,179.7	-1,277.9	-3,513.2	3,644.8	0.55	0.53	0.13
12,109.0	89.01	272.53	7,180.0	-1,277.2	-3,528.2	3,659.6	0.49	0.47	0.13
12,124.0	89.09	272.54	7,180.3	-1,276.6	-3,543.2	3,674.4	0.54	0.53	0.07
12,139.0	89.16	272.54	7,180.5	-1,275.9	-3,558.2	3,689.2	0.47	0.47	0.00
12,154.0	89.24	272.54	7,180.7	-1,275.2	-3,573.2	3,704.0	0.53	0.53	0.00
12,169.0	89.33	272.54	7,180.9	-1,274.6	-3,588.2	3,718.7	0.60	0.60	0.00
12,183.8	89.43	272.54	7,181.0	-1,273.9	-3,603.0	3,733.4	0.67	0.67	0.00
12,198.7	89.54	272.54	7,181.2	-1,273.3	-3,617.8	3,748.0	0.74	0.74	0.00
12,213.5	89.65	272.54	7,181.3	-1,272.6	-3,632.6	3,762.6	0.74	0.74	0.00
12,228.3	89.78	272.54	7,181.3	-1,272.0	-3,647.4	3,777.2	0.88	0.88	0.00
12,243.2	89.91	272.55	7,181.4	-1,271.3	-3,662.3	3,791.9	0.88	0.88	0.07
12,258.0	90.05	272.56	7,181.4	-1,270.6	-3,677.1	3,806.5	0.95	0.94	0.07
12,272.8	90.21	272.59	7,181.4	-1,270.0	-3,691.9	3,821.1	1.10	1.08	0.20
12,287.7	90.38	272.63	7,181.3	-1,269.3	-3,706.7	3,835.7	1.18	1.15	0.27
12,302.5	90.54	272.65	7,181.2	-1,268.6	-3,721.5	3,850.3	1.09	1.08	0.13
12,317.3	90.68	272.66	7,181.0	-1,267.9	-3,736.3	3,864.9	0.95	0.94	0.07
12,332.2	90.80	272.62	7,180.8	-1,267.2	-3,751.2	3,879.6	0.85	0.81	-0.27

Ensign Energy Services Inc.

Survey Report

Company:	Bayswater Exploration & Production, LLC	Local Co-ordinate Reference:	Well Groves Farm S-34-33HC
Project:	SEC.34-T7N-R65W	TVD Reference:	WELL @ 4867.0ft (Original Well Elev)
Site:	Groves Farm 34-L Pad Sec.34-T7N-R65W	MD Reference:	WELL @ 4867.0ft (Original Well Elev)
Well:	Groves Farm S-34-33HC	North Reference:	True
Wellbore:	Groves Farms S-34-33HC Wellbore #1	Survey Calculation Method:	Minimum Curvature
Design:	Groves Farms S-34-33HC Wellbore #1	Database:	US_EDM

Survey										
Measured Depth (ft)	Inclination (°)	Azimuth (°)	Vertical Depth (ft)	+N/-S (ft)	+E/-W (ft)	Vertical Section (ft)	Dogleg Rate (°/100usft)	Build Rate (°/100usft)	Turn Rate (°/100usft)	
12,347.0	90.86	272.53	7,180.6	-1,266.6	-3,766.0	3,894.2	0.73	0.40	-0.61	
12,361.8	90.83	272.33	7,180.4	-1,265.9	-3,780.8	3,908.8	1.36	-0.20	-1.35	
12,376.7	90.76	272.08	7,180.2	-1,265.4	-3,795.6	3,923.4	1.75	-0.47	-1.68	
12,391.5	90.65	271.79	7,180.0	-1,264.9	-3,810.4	3,938.1	2.09	-0.74	-1.96	
12,406.3	90.54	271.50	7,179.8	-1,264.4	-3,825.3	3,952.7	2.09	-0.74	-1.96	
12,421.2	90.44	271.22	7,179.7	-1,264.1	-3,840.1	3,967.4	2.00	-0.67	-1.89	
12,436.0	90.37	270.97	7,179.6	-1,263.8	-3,854.9	3,982.1	1.75	-0.47	-1.69	
12,450.8	90.33	270.66	7,179.5	-1,263.6	-3,869.8	3,996.8	2.11	-0.27	-2.09	
12,465.7	90.35	270.52	7,179.4	-1,263.4	-3,884.6	4,011.5	0.95	0.13	-0.94	
12,480.5	90.40	270.40	7,179.3	-1,263.3	-3,899.4	4,026.2	0.88	0.34	-0.81	
12,495.3	90.47	270.30	7,179.2	-1,263.2	-3,914.3	4,040.9	0.82	0.47	-0.67	
12,510.2	90.54	270.22	7,179.1	-1,263.2	-3,929.1	4,055.6	0.72	0.47	-0.54	
12,525.0	90.63	270.16	7,178.9	-1,263.1	-3,943.9	4,070.3	0.73	0.61	-0.40	
12,540.0	90.72	270.11	7,178.8	-1,263.1	-3,958.9	4,085.2	0.69	0.60	-0.33	
12,555.0	90.81	270.07	7,178.6	-1,263.1	-3,973.9	4,100.1	0.66	0.60	-0.27	
12,570.0	90.91	270.05	7,178.3	-1,263.0	-3,988.9	4,115.0	0.68	0.67	-0.13	
12,585.0	91.00	270.05	7,178.1	-1,263.0	-4,003.9	4,129.8	0.60	0.60	0.00	
12,600.0	91.08	270.07	7,177.8	-1,263.0	-4,018.9	4,144.7	0.55	0.53	0.13	
12,615.0	91.15	270.13	7,177.5	-1,263.0	-4,033.9	4,159.6	0.61	0.47	0.40	
12,629.8	91.19	270.25	7,177.2	-1,262.9	-4,048.7	4,174.3	0.85	0.27	0.81	
12,644.7	91.22	270.40	7,176.9	-1,262.9	-4,063.6	4,189.0	1.03	0.20	1.01	
12,659.5	91.25	270.55	7,176.6	-1,262.7	-4,078.4	4,203.7	1.03	0.20	1.01	
12,674.3	91.29	270.70	7,176.3	-1,262.6	-4,093.2	4,218.4	1.05	0.27	1.01	
12,689.2	91.34	270.83	7,175.9	-1,262.4	-4,108.1	4,233.1	0.94	0.34	0.88	
12,704.0	89.76	270.36	7,175.8	-1,262.2	-4,122.9	4,247.8	11.12	-10.65	-3.17	
12,719.0	89.11	270.41	7,175.9	-1,262.1	-4,137.9	4,262.6	4.35	-4.33	0.33	
12,734.0	89.27	270.43	7,176.1	-1,262.0	-4,152.9	4,277.5	1.07	1.07	0.13	
12,749.0	89.45	270.43	7,176.3	-1,261.9	-4,167.9	4,292.4	1.20	1.20	0.00	
12,764.0	89.63	270.43	7,176.4	-1,261.8	-4,182.9	4,307.3	1.20	1.20	0.00	
12,779.0	89.81	270.42	7,176.5	-1,261.7	-4,197.9	4,322.1	1.20	1.20	-0.07	
12,794.0	89.97	270.41	7,176.5	-1,261.6	-4,212.9	4,337.0	1.07	1.07	-0.07	
12,808.7	90.10	270.41	7,176.5	-1,261.5	-4,227.6	4,351.5	0.89	0.89	0.00	
12,823.3	90.21	270.40	7,176.5	-1,261.4	-4,242.2	4,366.1	0.75	0.75	-0.07	
12,838.0	90.31	270.39	7,176.4	-1,261.3	-4,256.9	4,380.6	0.69	0.68	-0.07	
12,852.7	90.41	270.38	7,176.3	-1,261.2	-4,271.5	4,395.2	0.69	0.68	-0.07	
12,867.3	90.50	270.37	7,176.2	-1,261.1	-4,286.2	4,409.7	0.62	0.61	-0.07	
12,882.0	90.59	270.35	7,176.1	-1,261.0	-4,300.9	4,424.2	0.63	0.61	-0.14	
12,897.0	90.69	270.32	7,175.9	-1,260.9	-4,315.9	4,439.1	0.70	0.67	-0.20	
12,912.0	90.78	270.29	7,175.7	-1,260.8	-4,330.9	4,454.0	0.63	0.60	-0.20	
12,927.0	90.87	270.25	7,175.5	-1,260.7	-4,345.9	4,468.9	0.66	0.60	-0.27	
12,942.0	90.94	270.21	7,175.2	-1,260.7	-4,360.9	4,483.7	0.54	0.47	-0.27	
12,957.0	90.99	270.16	7,175.0	-1,260.6	-4,375.9	4,498.6	0.47	0.33	-0.33	
12,972.0	90.99	270.11	7,174.7	-1,260.6	-4,390.9	4,513.5	0.33	0.00	-0.33	
12,986.8	90.91	270.05	7,174.5	-1,260.6	-4,405.7	4,528.2	0.67	-0.54	-0.40	

Ensign Energy Services Inc.

Survey Report

Company:	Bayswater Exploration & Production, LLC	Local Co-ordinate Reference:	Well Groves Farm S-34-33HC
Project:	SEC.34-T7N-R65W	TVD Reference:	WELL @ 4867.0ft (Original Well Elev)
Site:	Groves Farm 34-L Pad Sec.34-T7N-R65W	MD Reference:	WELL @ 4867.0ft (Original Well Elev)
Well:	Groves Farm S-34-33HC	North Reference:	True
Wellbore:	Groves Farms S-34-33HC Wellbore #1	Survey Calculation Method:	Minimum Curvature
Design:	Groves Farms S-34-33HC Wellbore #1	Database:	US_EDM

Survey

Measured Depth (ft)	Inclination (°)	Azimuth (°)	Vertical Depth (ft)	+N/-S (ft)	+E/-W (ft)	Vertical Section (ft)	Dogleg Rate (°/100usft)	Build Rate (°/100usft)	Turn Rate (°/100usft)
13,001.7	90.81	269.99	7,174.3	-1,260.6	-4,420.5	4,542.9	0.79	-0.67	-0.40
13,016.5	90.70	269.94	7,174.1	-1,260.6	-4,435.4	4,557.6	0.81	-0.74	-0.34
13,031.3	90.61	269.89	7,173.9	-1,260.6	-4,450.2	4,572.3	0.69	-0.61	-0.34
13,046.2	90.58	269.87	7,173.7	-1,260.6	-4,465.0	4,587.1	0.24	-0.20	-0.13
13,061.0	89.15	270.11	7,173.8	-1,260.6	-4,479.9	4,601.8	9.78	-9.64	1.62
13,075.8	87.93	270.32	7,174.2	-1,260.6	-4,494.7	4,616.5	8.35	-8.23	1.42
13,090.7	88.24	270.41	7,174.7	-1,260.5	-4,509.5	4,631.2	2.18	2.09	0.61
13,105.5	88.59	270.53	7,175.1	-1,260.4	-4,524.3	4,645.9	2.49	2.36	0.81
13,120.3	88.96	270.65	7,175.4	-1,260.2	-4,539.2	4,660.6	2.62	2.49	0.81
13,135.2	89.30	270.76	7,175.6	-1,260.0	-4,554.0	4,675.3	2.41	2.29	0.74
13,150.0	89.56	270.84	7,175.8	-1,259.8	-4,568.8	4,690.0	1.83	1.75	0.54
13,164.8	89.68	270.88	7,175.9	-1,259.6	-4,583.7	4,704.7	0.85	0.81	0.27
13,179.7	89.71	270.89	7,175.9	-1,259.4	-4,598.5	4,719.3	0.21	0.20	0.07
13,194.5	89.69	270.87	7,176.0	-1,259.1	-4,613.3	4,734.0	0.19	-0.13	-0.13
13,209.3	89.67	270.85	7,176.1	-1,258.9	-4,628.2	4,748.7	0.19	-0.13	-0.13
13,224.2	89.66	270.82	7,176.2	-1,258.7	-4,643.0	4,763.4	0.21	-0.07	-0.20
13,239.0	88.25	270.73	7,176.5	-1,258.5	-4,657.8	4,778.1	9.53	-9.51	-0.61
13,253.8	87.09	270.61	7,177.1	-1,258.3	-4,672.6	4,792.8	7.86	-7.82	-0.81
13,268.7	87.25	270.59	7,177.8	-1,258.2	-4,687.5	4,807.5	1.09	1.08	-0.13
13,283.5	87.45	270.57	7,178.5	-1,258.0	-4,702.3	4,822.1	1.36	1.35	-0.13
13,298.3	87.65	270.55	7,179.1	-1,257.9	-4,717.1	4,836.8	1.36	1.35	-0.13
13,313.2	87.85	270.52	7,179.7	-1,257.7	-4,731.9	4,851.5	1.36	1.35	-0.20
13,328.0	88.04	270.47	7,180.2	-1,257.6	-4,746.7	4,866.2	1.32	1.28	-0.34
13,342.8	88.17	270.41	7,180.7	-1,257.5	-4,761.6	4,880.9	0.97	0.88	-0.40
13,357.7	88.28	270.33	7,181.2	-1,257.4	-4,776.4	4,895.6	0.92	0.74	-0.54
13,372.5	88.37	270.25	7,181.6	-1,257.3	-4,791.2	4,910.3	0.81	0.61	-0.54
13,387.3	88.45	270.15	7,182.0	-1,257.3	-4,806.0	4,925.0	0.86	0.54	-0.67
13,402.2	88.51	270.05	7,182.4	-1,257.2	-4,820.9	4,939.7	0.79	0.40	-0.67
13,417.0	88.55	269.95	7,182.8	-1,257.2	-4,835.7	4,954.4	0.73	0.27	-0.67
13,432.0	88.57	269.84	7,183.2	-1,257.3	-4,850.7	4,969.3	0.75	0.13	-0.73
13,447.0	88.58	269.73	7,183.5	-1,257.3	-4,865.7	4,984.2	0.74	0.07	-0.73
13,462.0	88.59	269.61	7,183.9	-1,257.4	-4,880.7	4,999.1	0.80	0.07	-0.80
13,477.0	88.59	269.49	7,184.3	-1,257.5	-4,895.7	5,014.0	0.80	0.00	-0.80
13,492.0	88.59	269.36	7,184.7	-1,257.7	-4,910.7	5,028.9	0.87	0.00	-0.87
13,507.0	88.60	269.22	7,185.0	-1,257.9	-4,925.7	5,043.8	0.94	0.07	-0.93
13,521.8	88.62	269.07	7,185.4	-1,258.1	-4,940.5	5,058.5	1.02	0.13	-1.01
13,536.7	88.65	268.92	7,185.7	-1,258.3	-4,955.3	5,073.3	1.03	0.20	-1.01
13,551.5	88.68	268.76	7,186.1	-1,258.6	-4,970.1	5,088.0	1.10	0.20	-1.08
13,566.3	88.73	268.61	7,186.4	-1,259.0	-4,985.0	5,102.8	1.07	0.34	-1.01
13,581.2	88.77	268.47	7,186.7	-1,259.4	-4,999.8	5,117.5	0.98	0.27	-0.94
13,596.0	88.83	268.35	7,187.0	-1,259.8	-5,014.6	5,132.3	0.90	0.40	-0.81
13,611.0	88.91	268.26	7,187.3	-1,260.2	-5,029.6	5,147.2	0.80	0.53	-0.60
13,626.0	88.99	268.20	7,187.6	-1,260.7	-5,044.6	5,162.2	0.67	0.53	-0.40

Ensign Energy Services Inc.

Survey Report

Company:	Bayswater Exploration & Production, LLC	Local Co-ordinate Reference:	Well Groves Farm S-34-33HC
Project:	SEC.34-T7N-R65W	TVD Reference:	WELL @ 4867.0ft (Original Well Elev)
Site:	Groves Farm 34-L Pad Sec.34-T7N-R65W	MD Reference:	WELL @ 4867.0ft (Original Well Elev)
Well:	Groves Farm S-34-33HC	North Reference:	True
Wellbore:	Groves Farms S-34-33HC Wellbore #1	Survey Calculation Method:	Minimum Curvature
Design:	Groves Farms S-34-33HC Wellbore #1	Database:	US_EDM

Survey									
Measured Depth (ft)	Inclination (°)	Azimuth (°)	Vertical Depth (ft)	+N/-S (ft)	+E/-W (ft)	Vertical Section (ft)	Dogleg Rate (°/100usft)	Build Rate (°/100usft)	Turn Rate (°/100usft)
13,641.0	89.06	268.15	7,187.9	-1,261.2	-5,059.6	5,177.1	0.57	0.47	-0.33
13,656.0	89.12	268.11	7,188.1	-1,261.6	-5,074.6	5,192.0	0.48	0.40	-0.27
13,671.0	89.14	268.09	7,188.3	-1,262.1	-5,089.6	5,207.0	0.19	0.13	-0.13
13,686.0	89.11	268.07	7,188.6	-1,262.6	-5,104.6	5,221.9	0.24	-0.20	-0.13
13,701.0	88.99	268.08	7,188.8	-1,263.2	-5,119.5	5,236.8	0.80	-0.80	0.07
13,716.0	88.83	268.08	7,189.1	-1,263.7	-5,134.5	5,251.8	1.07	-1.07	0.00
13,731.0	88.65	268.08	7,189.4	-1,264.2	-5,149.5	5,266.7	1.20	-1.20	0.00
13,746.0	88.48	268.07	7,189.8	-1,264.7	-5,164.5	5,281.6	1.14	-1.13	-0.07
13,761.0	88.34	268.03	7,190.2	-1,265.2	-5,179.5	5,296.6	0.97	-0.93	-0.27
13,776.0	87.82	268.68	7,190.7	-1,265.6	-5,194.5	5,311.5	5.55	-3.47	4.33
13,790.8	87.42	269.84	7,191.3	-1,265.8	-5,209.3	5,326.2	8.27	-2.70	7.82
13,805.7	87.51	269.62	7,192.0	-1,265.9	-5,224.1	5,340.9	1.60	0.61	-1.48
13,820.5	87.63	269.38	7,192.6	-1,266.0	-5,238.9	5,355.7	1.81	0.81	-1.62
13,835.3	87.77	269.13	7,193.2	-1,266.2	-5,253.8	5,370.4	1.93	0.94	-1.69
13,850.2	87.91	268.92	7,193.8	-1,266.4	-5,268.6	5,385.1	1.70	0.94	-1.42
13,865.0	88.03	268.76	7,194.3	-1,266.7	-5,283.4	5,399.9	1.35	0.81	-1.08
13,879.8	88.10	268.73	7,194.8	-1,267.1	-5,298.2	5,414.6	0.51	0.47	-0.20
13,894.7	88.16	268.76	7,195.3	-1,267.4	-5,313.0	5,429.4	0.45	0.40	0.20
13,909.5	88.20	268.82	7,195.8	-1,267.7	-5,327.9	5,444.1	0.49	0.27	0.40
13,924.3	88.23	268.88	7,196.2	-1,268.0	-5,342.7	5,458.8	0.45	0.20	0.40
13,939.2	88.28	268.92	7,196.7	-1,268.3	-5,357.5	5,473.6	0.43	0.34	0.27
13,954.0	88.45	270.65	7,197.1	-1,268.3	-5,372.3	5,488.3	11.72	1.15	11.67
13,969.0	88.52	272.11	7,197.5	-1,268.0	-5,387.3	5,503.1	9.74	0.47	9.73
13,984.0	88.61	271.99	7,197.9	-1,267.4	-5,402.3	5,517.9	1.00	0.60	-0.80
13,999.0	88.72	271.84	7,198.2	-1,266.9	-5,417.3	5,532.7	1.24	0.73	-1.00
14,014.0	88.83	271.69	7,198.5	-1,266.5	-5,432.3	5,547.6	1.24	0.73	-1.00
14,029.0	88.96	271.55	7,198.8	-1,266.1	-5,447.3	5,562.4	1.27	0.87	-0.93
14,044.0	89.09	271.45	7,199.1	-1,265.7	-5,462.3	5,577.2	1.09	0.87	-0.67
14,058.8	89.23	271.41	7,199.3	-1,265.3	-5,477.1	5,591.9	0.98	0.94	-0.27
14,073.7	89.37	271.41	7,199.5	-1,264.9	-5,491.9	5,606.6	0.94	0.94	0.00
14,088.5	89.51	271.43	7,199.6	-1,264.6	-5,506.8	5,621.2	0.95	0.94	0.13
14,103.3	89.65	271.47	7,199.7	-1,264.2	-5,521.6	5,635.9	0.98	0.94	0.27
14,118.2	89.77	271.50	7,199.8	-1,263.8	-5,536.4	5,650.6	0.83	0.81	0.20
14,133.0	89.88	271.54	7,199.9	-1,263.4	-5,551.2	5,665.2	0.79	0.74	0.27
14,147.8	89.96	271.55	7,199.9	-1,263.0	-5,566.1	5,679.9	0.54	0.54	0.07
14,162.7	90.02	271.56	7,199.9	-1,262.6	-5,580.9	5,694.5	0.41	0.40	0.07
14,177.5	90.07	271.57	7,199.9	-1,262.2	-5,595.7	5,709.2	0.34	0.34	0.07
14,192.3	90.13	271.57	7,199.8	-1,261.8	-5,610.6	5,723.9	0.40	0.40	0.00
14,207.2	90.19	271.58	7,199.8	-1,261.4	-5,625.4	5,738.5	0.41	0.40	0.07
14,222.0	90.26	271.60	7,199.7	-1,261.0	-5,640.2	5,753.2	0.49	0.47	0.13
14,237.0	90.38	271.64	7,199.7	-1,260.5	-5,655.2	5,768.0	0.84	0.80	0.27
14,252.0	90.50	271.68	7,199.5	-1,260.1	-5,670.2	5,782.8	0.84	0.80	0.27
14,267.0	90.63	271.73	7,199.4	-1,259.7	-5,685.2	5,797.7	0.93	0.87	0.33

Ensign Energy Services Inc.

Survey Report

Company:	Bayswater Exploration & Production, LLC	Local Co-ordinate Reference:	Well Groves Farm S-34-33HC
Project:	SEC.34-T7N-R65W	TVD Reference:	WELL @ 4867.0ft (Original Well Elev)
Site:	Groves Farm 34-L Pad Sec.34-T7N-R65W	MD Reference:	WELL @ 4867.0ft (Original Well Elev)
Well:	Groves Farm S-34-33HC	North Reference:	True
Wellbore:	Groves Farms S-34-33HC Wellbore #1	Survey Calculation Method:	Minimum Curvature
Design:	Groves Farms S-34-33HC Wellbore #1	Database:	US_EDM

Survey

Measured Depth (ft)	Inclination (°)	Azimuth (°)	Vertical Depth (ft)	+N/-S (ft)	+E/-W (ft)	Vertical Section (ft)	Dogleg Rate (°/100usft)	Build Rate (°/100usft)	Turn Rate (°/100usft)
14,282.0	90.76	271.76	7,199.2	-1,259.2	-5,700.2	5,812.5	0.89	0.87	0.20
14,297.0	90.85	271.78	7,199.0	-1,258.7	-5,715.2	5,827.3	0.61	0.60	0.13
14,312.0	90.91	271.76	7,198.8	-1,258.3	-5,730.2	5,842.1	0.42	0.40	-0.13
14,326.8	90.90	271.69	7,198.5	-1,257.8	-5,745.0	5,856.8	0.48	-0.07	-0.47
14,341.7	90.84	271.59	7,198.3	-1,257.4	-5,759.8	5,871.4	0.79	-0.40	-0.67
14,356.5	90.78	271.47	7,198.1	-1,257.0	-5,774.6	5,886.1	0.90	-0.40	-0.81
14,371.3	90.72	271.36	7,197.9	-1,256.6	-5,789.5	5,900.7	0.84	-0.40	-0.74
14,386.2	90.69	271.26	7,197.7	-1,256.3	-5,804.3	5,915.4	0.70	-0.20	-0.67
14,401.0	89.10	271.37	7,197.8	-1,256.0	-5,819.1	5,930.1	10.75	-10.72	0.74
14,416.0	88.46	271.26	7,198.1	-1,255.6	-5,834.1	5,944.9	4.33	-4.27	-0.73
14,431.0	88.59	271.24	7,198.5	-1,255.3	-5,849.1	5,959.8	0.88	0.87	-0.13
14,446.0	88.74	271.23	7,198.8	-1,255.0	-5,864.1	5,974.6	1.00	1.00	-0.07
14,461.0	88.90	271.23	7,199.1	-1,254.7	-5,879.1	5,989.4	1.07	1.07	0.00
14,476.0	89.07	271.23	7,199.4	-1,254.3	-5,894.1	6,004.3	1.13	1.13	0.00
14,491.0	89.25	271.25	7,199.6	-1,254.0	-5,909.1	6,019.1	1.21	1.20	0.13
14,505.8	89.41	271.27	7,199.8	-1,253.7	-5,923.9	6,033.8	1.09	1.08	0.13
14,520.7	89.57	271.30	7,199.9	-1,253.3	-5,938.7	6,048.5	1.10	1.08	0.20
14,535.5	89.72	271.33	7,200.0	-1,253.0	-5,953.6	6,063.1	1.03	1.01	0.20
14,550.3	89.88	271.36	7,200.1	-1,252.7	-5,968.4	6,077.8	1.10	1.08	0.20
14,565.2	90.03	271.39	7,200.1	-1,252.3	-5,983.2	6,092.5	1.03	1.01	0.20
14,580.0	90.17	271.42	7,200.0	-1,251.9	-5,998.1	6,107.1	0.97	0.94	0.20
14,594.8	90.31	271.43	7,200.0	-1,251.6	-6,012.9	6,121.8	0.95	0.94	0.07
14,609.7	90.44	271.44	7,199.9	-1,251.2	-6,027.7	6,136.5	0.88	0.88	0.07
14,624.5	90.57	271.45	7,199.8	-1,250.8	-6,042.5	6,151.1	0.88	0.88	0.07
14,639.3	90.71	271.46	7,199.6	-1,250.4	-6,057.4	6,165.8	0.95	0.94	0.07
14,654.2	90.85	271.46	7,199.4	-1,250.1	-6,072.2	6,180.5	0.94	0.94	0.00
14,669.0	91.00	271.47	7,199.1	-1,249.7	-6,087.0	6,195.1	1.01	1.01	0.07
14,684.0	91.18	271.49	7,198.9	-1,249.3	-6,102.0	6,210.0	1.21	1.20	0.13
14,699.0	91.37	271.50	7,198.5	-1,248.9	-6,117.0	6,224.8	1.27	1.27	0.07
14,714.0	91.56	271.51	7,198.1	-1,248.5	-6,132.0	6,239.6	1.27	1.27	0.07
14,729.0	91.74	271.51	7,197.7	-1,248.1	-6,147.0	6,254.4	1.20	1.20	0.00
14,744.0	91.92	271.50	7,197.2	-1,247.7	-6,162.0	6,269.3	1.20	1.20	-0.07
14,759.0	90.79	271.57	7,196.9	-1,247.3	-6,177.0	6,284.1	7.55	-7.53	0.47
14,774.0	90.94	271.50	7,196.6	-1,246.9	-6,192.0	6,298.9	1.10	1.00	-0.47
14,789.0	91.08	271.42	7,196.4	-1,246.5	-6,207.0	6,313.7	1.07	0.93	-0.53
14,804.0	91.20	271.33	7,196.1	-1,246.2	-6,221.9	6,328.6	1.00	0.80	-0.60
14,819.0	91.29	271.24	7,195.8	-1,245.8	-6,236.9	6,343.4	0.85	0.60	-0.60
14,834.0	91.33	271.16	7,195.4	-1,245.5	-6,251.9	6,358.2	0.60	0.27	-0.53
14,849.0	91.29	271.08	7,195.1	-1,245.2	-6,266.9	6,373.1	0.60	-0.27	-0.53
14,863.8	91.14	271.02	7,194.8	-1,245.0	-6,281.7	6,387.8	1.09	-1.01	-0.40
14,878.7	90.91	270.98	7,194.5	-1,244.7	-6,296.6	6,402.5	1.57	-1.55	-0.27
14,893.5	90.66	270.94	7,194.3	-1,244.5	-6,311.4	6,417.1	1.71	-1.69	-0.27
14,908.3	90.40	270.91	7,194.2	-1,244.2	-6,326.2	6,431.8	1.76	-1.75	-0.20
14,923.2	90.15	270.88	7,194.1	-1,244.0	-6,341.1	6,446.5	1.70	-1.68	-0.20

Ensign Energy Services Inc.

Survey Report

Company:	Bayswater Exploration & Production, LLC	Local Co-ordinate Reference:	Well Groves Farm S-34-33HC
Project:	SEC.34-T7N-R65W	TVD Reference:	WELL @ 4867.0ft (Original Well Elev)
Site:	Groves Farm 34-L Pad Sec.34-T7N-R65W	MD Reference:	WELL @ 4867.0ft (Original Well Elev)
Well:	Groves Farm S-34-33HC	North Reference:	True
Wellbore:	Groves Farms S-34-33HC Wellbore #1	Survey Calculation Method:	Minimum Curvature
Design:	Groves Farms S-34-33HC Wellbore #1	Database:	US_EDM

Survey

Measured Depth (ft)	Inclination (°)	Azimuth (°)	Vertical Depth (ft)	+N/-S (ft)	+E/-W (ft)	Vertical Section (ft)	Dogleg Rate (°/100usft)	Build Rate (°/100usft)	Turn Rate (°/100usft)
14,938.0	89.97	270.85	7,194.1	-1,243.8	-6,355.9	6,461.2	1.23	-1.21	-0.20
14,952.8	89.75	270.76	7,194.1	-1,243.6	-6,370.7	6,475.9	1.60	-1.48	-0.61
14,967.7	89.73	270.72	7,194.2	-1,243.4	-6,385.6	6,490.6	0.30	-0.13	-0.27
14,982.5	89.73	270.68	7,194.2	-1,243.2	-6,400.4	6,505.3	0.27	0.00	-0.27
14,997.3	89.77	270.63	7,194.3	-1,243.0	-6,415.2	6,520.0	0.43	0.27	-0.34
15,012.2	89.82	270.57	7,194.4	-1,242.9	-6,430.1	6,534.7	0.53	0.34	-0.40
15,027.0	89.88	270.50	7,194.4	-1,242.7	-6,444.9	6,549.4	0.62	0.40	-0.47
15,042.0	89.96	270.41	7,194.4	-1,242.6	-6,459.9	6,564.2	0.80	0.53	-0.60
15,057.0	90.03	270.31	7,194.4	-1,242.5	-6,474.9	6,579.1	0.81	0.47	-0.67
15,072.0	90.11	270.21	7,194.4	-1,242.4	-6,489.9	6,594.0	0.85	0.53	-0.67
15,087.0	90.18	270.11	7,194.4	-1,242.4	-6,504.9	6,608.9	0.81	0.47	-0.67
15,102.0	90.26	270.01	7,194.3	-1,242.4	-6,519.9	6,623.7	0.85	0.53	-0.67
15,117.0	89.24	270.53	7,194.4	-1,242.3	-6,534.9	6,638.6	7.63	-6.80	3.47
15,131.8	89.30	270.48	7,194.6	-1,242.2	-6,549.7	6,653.3	0.53	0.40	-0.34
15,146.7	89.36	270.44	7,194.7	-1,242.1	-6,564.6	6,668.0	0.49	0.40	-0.27
15,161.5	89.42	270.40	7,194.9	-1,242.0	-6,579.4	6,682.7	0.49	0.40	-0.27
15,176.3	89.48	270.38	7,195.0	-1,241.9	-6,594.2	6,697.4	0.43	0.40	-0.13
15,191.2	89.55	270.38	7,195.2	-1,241.8	-6,609.1	6,712.1	0.47	0.47	0.00
15,206.0	89.63	270.39	7,195.3	-1,241.7	-6,623.9	6,726.8	0.54	0.54	0.07
15,220.8	89.72	270.44	7,195.4	-1,241.5	-6,638.7	6,741.5	0.69	0.61	0.34
15,235.7	89.81	270.50	7,195.4	-1,241.4	-6,653.6	6,756.2	0.73	0.61	0.40
15,250.5	89.91	270.56	7,195.4	-1,241.3	-6,668.4	6,770.9	0.79	0.67	0.40
15,265.3	90.01	270.62	7,195.5	-1,241.1	-6,683.2	6,785.6	0.79	0.67	0.40
15,280.2	90.10	270.67	7,195.4	-1,241.0	-6,698.1	6,800.3	0.69	0.61	0.34
15,295.0	89.11	270.93	7,195.5	-1,240.8	-6,712.9	6,815.0	6.90	-6.68	1.75
15,310.0	89.04	270.94	7,195.8	-1,240.5	-6,727.9	6,829.9	0.47	-0.47	0.07
15,325.0	89.09	270.89	7,196.0	-1,240.3	-6,742.9	6,844.7	0.47	0.33	-0.33
15,340.0	89.13	270.84	7,196.3	-1,240.1	-6,757.9	6,859.6	0.43	0.27	-0.33
15,355.0	89.18	270.78	7,196.5	-1,239.8	-6,772.9	6,874.4	0.52	0.33	-0.40
15,370.0	89.23	270.73	7,196.7	-1,239.6	-6,787.9	6,889.3	0.47	0.33	-0.33
15,385.0	89.30	270.69	7,196.9	-1,239.5	-6,802.9	6,904.2	0.54	0.47	-0.27
15,399.8	89.38	270.69	7,197.1	-1,239.3	-6,817.7	6,918.8	0.54	0.54	0.00
15,414.7	89.48	270.70	7,197.2	-1,239.1	-6,832.5	6,933.5	0.68	0.67	0.07
15,429.5	89.58	270.71	7,197.3	-1,238.9	-6,847.4	6,948.2	0.68	0.67	0.07
15,444.3	89.68	270.73	7,197.4	-1,238.7	-6,862.2	6,962.9	0.69	0.67	0.13
15,459.2	89.77	270.74	7,197.5	-1,238.5	-6,877.0	6,977.6	0.61	0.61	0.07
15,474.0	89.85	270.73	7,197.5	-1,238.3	-6,891.9	6,992.3	0.54	0.54	-0.07
15,489.0	89.89	270.69	7,197.6	-1,238.2	-6,906.9	7,007.2	0.38	0.27	-0.27
15,504.0	89.92	270.64	7,197.6	-1,238.0	-6,921.8	7,022.0	0.39	0.20	-0.33
15,519.0	89.94	270.58	7,197.6	-1,237.8	-6,936.8	7,036.9	0.42	0.13	-0.40
15,534.0	89.97	270.53	7,197.6	-1,237.7	-6,951.8	7,051.8	0.39	0.20	-0.33
15,549.0	90.01	270.49	7,197.6	-1,237.5	-6,966.8	7,066.6	0.38	0.27	-0.27
15,564.0	88.70	270.84	7,197.8	-1,237.4	-6,981.8	7,081.5	9.04	-8.73	2.33

Ensign Energy Services Inc.

Survey Report

Company:	Bayswater Exploration & Production, LLC	Local Co-ordinate Reference:	Well Groves Farm S-34-33HC
Project:	SEC.34-T7N-R65W	TVD Reference:	WELL @ 4867.0ft (Original Well Elev)
Site:	Groves Farm 34-L Pad Sec.34-T7N-R65W	MD Reference:	WELL @ 4867.0ft (Original Well Elev)
Well:	Groves Farm S-34-33HC	North Reference:	True
Wellbore:	Groves Farms S-34-33HC Wellbore #1	Survey Calculation Method:	Minimum Curvature
Design:	Groves Farms S-34-33HC Wellbore #1	Database:	US_EDM

Survey										
Measured Depth (ft)	Inclination (°)	Azimuth (°)	Vertical Depth (ft)	+N/-S (ft)	+E/-W (ft)	Vertical Section (ft)	Dogleg Rate (°/100usft)	Build Rate (°/100usft)	Turn Rate (°/100usft)	
15,579.0	88.80	270.86	7,198.1	-1,237.2	-6,996.8	7,096.3	0.68	0.67	0.13	
15,594.0	88.92	270.90	7,198.4	-1,236.9	-7,011.8	7,111.2	0.84	0.80	0.27	
15,609.0	89.05	270.95	7,198.7	-1,236.7	-7,026.8	7,126.0	0.93	0.87	0.33	
15,624.0	89.18	271.00	7,198.9	-1,236.4	-7,041.8	7,140.9	0.93	0.87	0.33	
15,639.0	89.32	271.05	7,199.1	-1,236.2	-7,056.8	7,155.7	0.99	0.93	0.33	
15,654.0	89.44	271.09	7,199.3	-1,235.9	-7,071.8	7,170.6	0.84	0.80	0.27	
15,669.0	89.56	271.11	7,199.4	-1,235.6	-7,086.8	7,185.4	0.81	0.80	0.13	
15,684.0	89.66	271.13	7,199.5	-1,235.3	-7,101.8	7,200.3	0.68	0.67	0.13	
15,699.0	89.77	271.13	7,199.6	-1,235.0	-7,116.8	7,215.1	0.73	0.73	0.00	
15,714.0	89.87	271.14	7,199.6	-1,234.7	-7,131.8	7,230.0	0.67	0.67	0.07	
15,729.0	89.99	271.16	7,199.7	-1,234.4	-7,146.8	7,244.8	0.81	0.80	0.13	
15,744.0	90.11	271.18	7,199.6	-1,234.1	-7,161.8	7,259.6	0.81	0.80	0.13	
15,758.8	90.26	271.23	7,199.6	-1,233.8	-7,176.6	7,274.3	1.07	1.01	0.34	
15,773.7	90.42	271.30	7,199.5	-1,233.5	-7,191.5	7,289.0	1.18	1.08	0.47	
15,788.5	90.59	271.36	7,199.4	-1,233.1	-7,206.3	7,303.7	1.22	1.15	0.40	
15,803.3	90.76	271.41	7,199.2	-1,232.8	-7,221.1	7,318.3	1.19	1.15	0.34	
15,818.2	90.93	271.44	7,199.0	-1,232.4	-7,235.9	7,333.0	1.16	1.15	0.20	
15,833.0	89.63	271.77	7,198.9	-1,232.0	-7,250.8	7,347.7	9.04	-8.77	2.23	
15,848.0	89.81	271.73	7,199.0	-1,231.5	-7,265.8	7,362.5	1.23	1.20	-0.27	
15,863.0	89.98	271.66	7,199.0	-1,231.1	-7,280.8	7,377.3	1.23	1.13	-0.47	
15,878.0	90.15	271.58	7,199.0	-1,230.6	-7,295.8	7,392.1	1.25	1.13	-0.53	
15,893.0	90.31	271.50	7,198.9	-1,230.2	-7,310.7	7,407.0	1.19	1.07	-0.53	
15,908.0	90.44	271.41	7,198.8	-1,229.9	-7,325.7	7,421.8	1.05	0.87	-0.60	
15,923.0	90.55	271.33	7,198.7	-1,229.5	-7,340.7	7,436.6	0.91	0.73	-0.53	
15,937.8	90.61	271.26	7,198.6	-1,229.2	-7,355.6	7,451.3	0.62	0.40	-0.47	
15,952.7	90.64	271.20	7,198.4	-1,228.8	-7,370.4	7,466.0	0.45	0.20	-0.40	
15,967.5	90.64	271.14	7,198.2	-1,228.5	-7,385.2	7,480.6	0.40	0.00	-0.40	
15,982.3	90.64	271.09	7,198.1	-1,228.3	-7,400.0	7,495.3	0.34	0.00	-0.34	
15,997.2	90.53	271.04	7,197.9	-1,228.0	-7,414.9	7,510.0	0.81	-0.74	-0.34	
16,012.0	88.98	271.06	7,198.0	-1,227.7	-7,429.7	7,524.7	10.45	-10.45	0.13	
16,026.8	88.97	270.99	7,198.2	-1,227.4	-7,444.5	7,539.4	0.48	-0.07	-0.47	
16,041.7	88.95	270.91	7,198.5	-1,227.2	-7,459.4	7,554.1	0.56	-0.13	-0.54	
16,056.5	88.94	270.82	7,198.8	-1,227.0	-7,474.2	7,568.7	0.61	-0.07	-0.61	
16,071.3	88.92	270.73	7,199.1	-1,226.8	-7,489.0	7,583.4	0.62	-0.13	-0.61	
16,086.2	88.92	270.64	7,199.3	-1,226.6	-7,503.9	7,598.1	0.61	0.00	-0.61	
16,101.0	88.92	270.54	7,199.6	-1,226.4	-7,518.7	7,612.8	0.67	0.00	-0.67	
16,115.8	88.95	270.42	7,199.9	-1,226.3	-7,533.5	7,627.5	0.83	0.20	-0.81	
16,130.7	89.00	270.32	7,200.2	-1,226.2	-7,548.4	7,642.2	0.75	0.34	-0.67	
16,145.5	89.07	270.22	7,200.4	-1,226.2	-7,563.2	7,656.9	0.82	0.47	-0.67	
16,160.3	89.16	270.16	7,200.6	-1,226.1	-7,578.0	7,671.6	0.73	0.61	-0.40	
16,175.2	89.29	270.14	7,200.8	-1,226.1	-7,592.8	7,686.4	0.89	0.88	-0.13	
16,190.0	89.47	270.20	7,201.0	-1,226.0	-7,607.7	7,701.1	1.28	1.21	0.40	
16,205.0	89.74	270.39	7,201.1	-1,225.9	-7,622.7	7,715.9	2.20	1.80	1.27	

Ensign Energy Services Inc.

Survey Report

Company:	Bayswater Exploration & Production, LLC	Local Co-ordinate Reference:	Well Groves Farm S-34-33HC
Project:	SEC.34-T7N-R65W	TVD Reference:	WELL @ 4867.0ft (Original Well Elev)
Site:	Groves Farm 34-L Pad Sec.34-T7N-R65W	MD Reference:	WELL @ 4867.0ft (Original Well Elev)
Well:	Groves Farm S-34-33HC	North Reference:	True
Wellbore:	Groves Farms S-34-33HC Wellbore #1	Survey Calculation Method:	Minimum Curvature
Design:	Groves Farms S-34-33HC Wellbore #1	Database:	US_EDM

Survey									
Measured Depth (ft)	Inclination (°)	Azimuth (°)	Vertical Depth (ft)	+N/-S (ft)	+E/-W (ft)	Vertical Section (ft)	Dogleg Rate (°/100usft)	Build Rate (°/100usft)	Turn Rate (°/100usft)
16,220.0	90.05	270.65	7,201.1	-1,225.8	-7,637.7	7,730.8	2.70	2.07	1.73
16,235.0	90.38	270.94	7,201.1	-1,225.6	-7,652.7	7,745.7	2.93	2.20	1.93
16,250.0	90.70	271.23	7,200.9	-1,225.3	-7,667.7	7,760.5	2.88	2.13	1.93
16,265.0	90.99	271.48	7,200.7	-1,225.0	-7,682.7	7,775.3	2.55	1.93	1.67
16,280.0	91.22	271.65	7,200.4	-1,224.6	-7,697.7	7,790.2	1.91	1.53	1.13
16,294.8	91.32	271.68	7,200.1	-1,224.1	-7,712.5	7,804.8	0.70	0.67	0.20
16,309.7	91.36	271.63	7,199.7	-1,223.7	-7,727.3	7,819.5	0.43	0.27	-0.34
16,324.5	91.36	271.53	7,199.4	-1,223.3	-7,742.1	7,834.1	0.67	0.00	-0.67
16,339.3	91.36	271.41	7,199.0	-1,222.9	-7,756.9	7,848.8	0.81	0.00	-0.81
16,354.2	91.38	271.30	7,198.7	-1,222.6	-7,771.8	7,863.5	0.75	0.13	-0.74
16,369.0	90.02	270.89	7,198.5	-1,222.3	-7,786.6	7,878.1	9.58	-9.17	-2.76
16,383.8	89.33	270.66	7,198.6	-1,222.1	-7,801.4	7,892.8	4.90	-4.65	-1.55
16,398.7	89.49	270.62	7,198.7	-1,221.9	-7,816.3	7,907.5	1.11	1.08	-0.27
16,413.5	89.67	270.59	7,198.9	-1,221.7	-7,831.1	7,922.2	1.23	1.21	-0.20
16,428.3	89.84	270.57	7,198.9	-1,221.6	-7,845.9	7,936.9	1.15	1.15	-0.13
16,443.2	89.99	270.55	7,198.9	-1,221.4	-7,860.8	7,951.6	1.02	1.01	-0.13
16,458.0	90.10	270.55	7,198.9	-1,221.3	-7,875.6	7,966.3	0.74	0.74	0.00
16,473.0	90.12	270.56	7,198.9	-1,221.2	-7,890.6	7,981.2	0.15	0.13	0.07
16,488.0	90.10	270.57	7,198.9	-1,221.0	-7,905.6	7,996.0	0.15	-0.13	0.07
16,503.0	90.05	270.58	7,198.9	-1,220.9	-7,920.6	8,010.9	0.34	-0.33	0.07
16,518.0	89.99	270.59	7,198.8	-1,220.7	-7,935.6	8,025.8	0.41	-0.40	0.07
16,533.0	89.94	270.57	7,198.9	-1,220.6	-7,950.6	8,040.6	0.36	-0.33	-0.13
16,548.0	88.54	270.33	7,199.1	-1,220.4	-7,965.6	8,055.5	9.47	-9.33	-1.60
16,562.8	88.52	270.24	7,199.4	-1,220.4	-7,980.4	8,070.2	0.62	-0.13	-0.61
16,577.7	88.51	270.13	7,199.8	-1,220.3	-7,995.3	8,084.9	0.74	-0.07	-0.74
16,592.5	88.51	270.01	7,200.2	-1,220.3	-8,010.1	8,099.6	0.81	0.00	-0.81
16,607.3	88.52	269.89	7,200.6	-1,220.3	-8,024.9	8,114.3	0.81	0.07	-0.81
16,622.2	88.54	269.77	7,201.0	-1,220.4	-8,039.7	8,129.1	0.82	0.13	-0.81
16,637.0	88.56	269.67	7,201.3	-1,220.4	-8,054.6	8,143.8	0.69	0.13	-0.67
16,652.0	88.59	269.59	7,201.7	-1,220.5	-8,069.6	8,158.7	0.57	0.20	-0.53
16,667.0	88.64	269.53	7,202.1	-1,220.6	-8,084.6	8,173.6	0.52	0.33	-0.40
16,682.0	88.70	269.49	7,202.4	-1,220.8	-8,099.5	8,188.5	0.48	0.40	-0.27
16,697.0	88.78	269.46	7,202.8	-1,220.9	-8,114.5	8,203.4	0.57	0.53	-0.20
16,712.0	88.87	269.44	7,203.1	-1,221.1	-8,129.5	8,218.3	0.61	0.60	-0.13
16,727.0	89.01	269.44	7,203.3	-1,221.2	-8,144.5	8,233.2	0.93	0.93	0.00
16,741.8	89.20	269.45	7,203.6	-1,221.3	-8,159.4	8,247.9	1.28	1.28	0.07
16,756.7	89.42	269.48	7,203.8	-1,221.5	-8,174.2	8,262.6	1.50	1.48	0.20
16,771.5	89.65	269.51	7,203.9	-1,221.6	-8,189.0	8,277.4	1.56	1.55	0.20
16,786.3	89.88	269.54	7,203.9	-1,221.7	-8,203.9	8,292.1	1.56	1.55	0.20
16,801.2	89.93	269.89	7,204.0	-1,221.8	-8,218.7	8,306.8	2.38	0.34	2.36
16,816.0	89.64	271.09	7,204.0	-1,221.7	-8,233.5	8,321.5	8.32	-1.96	8.09
16,831.0	89.83	271.08	7,204.1	-1,221.4	-8,248.5	8,336.4	1.27	1.27	-0.07
16,846.0	90.00	271.07	7,204.1	-1,221.1	-8,263.5	8,351.2	1.14	1.13	-0.07
16,861.0	90.17	271.05	7,204.1	-1,220.8	-8,278.5	8,366.1	1.14	1.13	-0.13

Ensign Energy Services Inc.

Survey Report

Company:	Bayswater Exploration & Production, LLC	Local Co-ordinate Reference:	Well Groves Farm S-34-33HC
Project:	SEC.34-T7N-R65W	TVD Reference:	WELL @ 4867.0ft (Original Well Elev)
Site:	Groves Farm 34-L Pad Sec.34-T7N-R65W	MD Reference:	WELL @ 4867.0ft (Original Well Elev)
Well:	Groves Farm S-34-33HC	North Reference:	True
Wellbore:	Groves Farms S-34-33HC Wellbore #1	Survey Calculation Method:	Minimum Curvature
Design:	Groves Farms S-34-33HC Wellbore #1	Database:	US_EDM

Survey

Measured Depth (ft)	Inclination (°)	Azimuth (°)	Vertical Depth (ft)	+N/-S (ft)	+E/-W (ft)	Vertical Section (ft)	Dogleg Rate (°/100usft)	Build Rate (°/100usft)	Turn Rate (°/100usft)
16,876.0	90.32	271.04	7,204.0	-1,220.6	-8,293.5	8,380.9	1.00	1.00	-0.07
16,891.0	90.45	271.04	7,203.9	-1,220.3	-8,308.5	8,395.8	0.87	0.87	0.00
16,906.0	90.53	271.06	7,203.8	-1,220.0	-8,323.5	8,410.6	0.55	0.53	0.13
16,920.8	90.56	271.12	7,203.7	-1,219.7	-8,338.3	8,425.3	0.45	0.20	0.40
16,935.7	90.55	271.20	7,203.5	-1,219.4	-8,353.2	8,440.0	0.54	-0.07	0.54
16,950.5	90.53	271.28	7,203.4	-1,219.1	-8,368.0	8,454.6	0.56	-0.13	0.54
16,965.3	90.50	271.36	7,203.2	-1,218.8	-8,382.8	8,469.3	0.58	-0.20	0.54
16,980.2	90.49	271.42	7,203.1	-1,218.4	-8,397.7	8,484.0	0.41	-0.07	0.40
16,995.0	89.87	271.53	7,203.1	-1,218.0	-8,412.5	8,498.6	4.25	-4.18	0.74
17,010.0	88.95	271.65	7,203.2	-1,217.6	-8,427.5	8,513.5	6.19	-6.13	0.80
17,025.0	89.05	271.63	7,203.5	-1,217.2	-8,442.5	8,528.3	0.68	0.67	-0.13
17,040.0	89.17	271.58	7,203.7	-1,216.8	-8,457.5	8,543.1	0.87	0.80	-0.33
17,055.0	89.30	271.53	7,203.9	-1,216.4	-8,472.5	8,557.9	0.93	0.87	-0.33
17,070.0	89.40	271.48	7,204.1	-1,216.0	-8,487.4	8,572.8	0.75	0.67	-0.33
17,085.0	89.47	271.44	7,204.2	-1,215.6	-8,502.4	8,587.6	0.54	0.47	-0.27
17,099.8	89.48	271.42	7,204.4	-1,215.2	-8,517.3	8,602.3	0.15	0.07	-0.13
17,114.7	89.45	271.41	7,204.5	-1,214.8	-8,532.1	8,616.9	0.21	-0.20	-0.07
17,129.5	89.40	271.40	7,204.7	-1,214.5	-8,546.9	8,631.6	0.34	-0.34	-0.07
17,144.3	89.36	271.39	7,204.8	-1,214.1	-8,561.8	8,646.3	0.28	-0.27	-0.07
17,159.2	89.34	271.39	7,205.0	-1,213.8	-8,576.6	8,660.9	0.13	-0.13	0.00
17,174.0	88.50	271.21	7,205.3	-1,213.4	-8,591.4	8,675.6	5.79	-5.66	-1.21
17,188.8	88.42	271.17	7,205.7	-1,213.1	-8,606.2	8,690.3	0.60	-0.54	-0.27
17,203.7	88.54	271.16	7,206.1	-1,212.8	-8,621.1	8,705.0	0.81	0.81	-0.07
17,218.5	88.67	271.14	7,206.4	-1,212.5	-8,635.9	8,719.6	0.89	0.88	-0.13
17,233.3	88.81	271.13	7,206.7	-1,212.2	-8,650.7	8,734.3	0.95	0.94	-0.07
17,248.2	88.95	271.11	7,207.0	-1,211.9	-8,665.5	8,749.0	0.95	0.94	-0.13
17,263.0	89.07	271.08	7,207.3	-1,211.7	-8,680.4	8,763.7	0.83	0.81	-0.20
17,278.0	89.18	271.05	7,207.5	-1,211.4	-8,695.4	8,778.5	0.76	0.73	-0.20
17,293.0	89.27	271.02	7,207.7	-1,211.1	-8,710.4	8,793.3	0.63	0.60	-0.20
17,308.0	89.35	270.98	7,207.9	-1,210.8	-8,725.4	8,808.2	0.60	0.53	-0.27
17,323.0	89.42	270.94	7,208.1	-1,210.6	-8,740.4	8,823.0	0.54	0.47	-0.27
17,338.0	89.49	270.91	7,208.2	-1,210.3	-8,755.4	8,837.9	0.51	0.47	-0.20
17,353.0	89.54	270.88	7,208.3	-1,210.1	-8,770.4	8,852.7	0.39	0.33	-0.20
17,367.8	89.57	270.86	7,208.4	-1,209.9	-8,785.2	8,867.4	0.24	0.20	-0.13
17,382.7	89.60	270.84	7,208.6	-1,209.7	-8,800.0	8,882.1	0.24	0.20	-0.13
17,397.5	89.63	270.83	7,208.7	-1,209.5	-8,814.8	8,896.8	0.21	0.20	-0.07
17,412.3	89.65	270.82	7,208.7	-1,209.2	-8,829.7	8,911.5	0.15	0.13	-0.07
17,427.2	89.68	270.81	7,208.8	-1,209.0	-8,844.5	8,926.2	0.21	0.20	-0.07
17,442.0	89.71	270.81	7,208.9	-1,208.8	-8,859.3	8,940.9	0.20	0.20	0.00
17,457.0	89.76	270.81	7,209.0	-1,208.6	-8,874.3	8,955.7	0.33	0.33	0.00
17,472.0	89.81	270.81	7,209.0	-1,208.4	-8,889.3	8,970.6	0.33	0.33	0.00
17,487.0	89.87	270.81	7,209.1	-1,208.2	-8,904.3	8,985.5	0.40	0.40	0.00
17,502.0	89.92	270.79	7,209.1	-1,208.0	-8,919.3	9,000.3	0.36	0.33	-0.13

Ensign Energy Services Inc.

Survey Report

Company:	Bayswater Exploration & Production, LLC	Local Co-ordinate Reference:	Well Groves Farm S-34-33HC
Project:	SEC.34-T7N-R65W	TVD Reference:	WELL @ 4867.0ft (Original Well Elev)
Site:	Groves Farm 34-L Pad Sec.34-T7N-R65W	MD Reference:	WELL @ 4867.0ft (Original Well Elev)
Well:	Groves Farm S-34-33HC	North Reference:	True
Wellbore:	Groves Farms S-34-33HC Wellbore #1	Survey Calculation Method:	Minimum Curvature
Design:	Groves Farms S-34-33HC Wellbore #1	Database:	US_EDM

Survey										
Measured Depth (ft)	Inclination (°)	Azimuth (°)	Vertical Depth (ft)	+N/-S (ft)	+E/-W (ft)	Vertical Section (ft)	Dogleg Rate (°/100usft)	Build Rate (°/100usft)	Turn Rate (°/100usft)	
17,517.0	89.95	270.75	7,209.1	-1,207.8	-8,934.3	9,015.2	0.33	0.20	-0.27	
17,532.0	89.96	270.68	7,209.1	-1,207.6	-8,949.3	9,030.0	0.47	0.07	-0.47	
17,546.8	89.92	270.54	7,209.1	-1,207.4	-8,964.2	9,044.7	0.98	-0.27	-0.94	
17,561.7	89.86	270.37	7,209.2	-1,207.3	-8,979.0	9,059.4	1.21	-0.40	-1.15	
17,576.5	89.79	270.19	7,209.2	-1,207.2	-8,993.8	9,074.1	1.30	-0.47	-1.21	
17,591.3	89.72	269.99	7,209.3	-1,207.2	-9,008.7	9,088.8	1.43	-0.47	-1.35	
17,606.2	89.64	269.80	7,209.4	-1,207.2	-9,023.5	9,103.6	1.39	-0.54	-1.28	
17,621.0	89.58	269.62	7,209.5	-1,207.3	-9,038.3	9,118.3	1.28	-0.40	-1.21	
17,636.0	89.55	269.46	7,209.6	-1,207.4	-9,053.3	9,133.2	1.09	-0.20	-1.07	
17,651.0	89.53	269.33	7,209.7	-1,207.6	-9,068.3	9,148.1	0.88	-0.13	-0.87	
17,666.0	89.53	269.24	7,209.8	-1,207.8	-9,083.3	9,163.0	0.60	0.00	-0.60	
17,681.0	89.55	269.18	7,209.9	-1,208.0	-9,098.3	9,177.9	0.42	0.13	-0.40	
17,696.0	89.59	269.20	7,210.1	-1,208.2	-9,113.3	9,192.8	0.30	0.27	0.13	
17,711.0	89.68	269.31	7,210.2	-1,208.4	-9,128.3	9,207.7	0.95	0.60	0.73	
17,725.8	89.82	269.59	7,210.2	-1,208.5	-9,143.1	9,222.5	2.11	0.94	1.89	
17,740.7	90.00	269.95	7,210.2	-1,208.6	-9,158.0	9,237.2	2.71	1.21	2.43	
17,755.5	90.19	270.35	7,210.2	-1,208.6	-9,172.8	9,251.9	2.99	1.28	2.70	
17,770.3	90.40	270.75	7,210.1	-1,208.4	-9,187.6	9,266.6	3.05	1.42	2.70	
17,785.2	90.60	271.10	7,210.0	-1,208.2	-9,202.5	9,281.3	2.72	1.35	2.36	
17,800.0	90.30	272.00	7,209.9	-1,207.8	-9,217.3	9,295.9	6.40	-2.02	6.07	
17,814.8	89.99	272.89	7,209.9	-1,207.1	-9,232.1	9,310.6	6.35	-2.09	6.00	
17,829.7	90.19	272.97	7,209.8	-1,206.4	-9,246.9	9,325.2	1.45	1.35	0.54	
17,844.5	90.38	273.01	7,209.8	-1,205.6	-9,261.8	9,339.8	1.31	1.28	0.27	
17,859.3	90.55	273.02	7,209.6	-1,204.8	-9,276.6	9,354.4	1.15	1.15	0.07	
17,874.2	90.68	273.01	7,209.5	-1,204.0	-9,291.4	9,369.0	0.88	0.88	-0.07	
17,889.0	90.75	272.99	7,209.3	-1,203.3	-9,306.2	9,383.6	0.49	0.47	-0.13	
17,904.0	90.71	272.95	7,209.1	-1,202.5	-9,321.2	9,398.3	0.38	-0.27	-0.27	
17,919.0	90.60	272.90	7,208.9	-1,201.7	-9,336.1	9,413.1	0.81	-0.73	-0.33	
17,934.0	90.48	272.85	7,208.8	-1,201.0	-9,351.1	9,427.9	0.87	-0.80	-0.33	
17,949.0	90.35	272.80	7,208.7	-1,200.2	-9,366.1	9,442.7	0.93	-0.87	-0.33	
17,964.0	90.26	272.76	7,208.6	-1,199.5	-9,381.1	9,457.4	0.66	-0.60	-0.27	
17,979.0	89.11	272.31	7,208.7	-1,198.8	-9,396.1	9,472.2	8.23	-7.67	-3.00	
17,992.6	88.87	272.18	7,208.9	-1,198.3	-9,409.7	9,485.6	2.01	-1.76	-0.96	
18,006.2	88.95	272.17	7,209.2	-1,197.8	-9,423.3	9,499.1	0.59	0.59	-0.07	
18,019.8	89.05	272.16	7,209.4	-1,197.3	-9,436.8	9,512.5	0.74	0.74	-0.07	
18,033.4	89.16	272.15	7,209.6	-1,196.8	-9,450.4	9,525.9	0.81	0.81	-0.07	
18,047.0	89.26	272.14	7,209.8	-1,196.3	-9,464.0	9,539.3	0.74	0.74	-0.07	
18,060.4	89.34	272.14	7,210.0	-1,195.8	-9,477.4	9,552.5	0.60	0.60	0.00	
18,073.8	89.40	272.14	7,210.1	-1,195.3	-9,490.8	9,565.7	0.45	0.45	0.00	
18,087.2	89.45	272.14	7,210.3	-1,194.8	-9,504.1	9,578.9	0.37	0.37	0.00	
18,100.5	89.49	272.15	7,210.4	-1,194.3	-9,517.5	9,592.2	0.31	0.30	0.07	
18,113.9	89.53	272.15	7,210.5	-1,193.8	-9,530.9	9,605.4	0.30	0.30	0.00	
18,115.0	89.54	272.15	7,210.5	-1,193.7	-9,532.0	9,606.4	0.93	0.93	0.00	

Ensign Energy Services Inc.

Survey Report

Company:	Bayswater Exploration & Production, LLC	Local Co-ordinate Reference:	Well Groves Farm S-34-33HC
Project:	SEC.34-T7N-R65W	TVD Reference:	WELL @ 4867.0ft (Original Well Elev)
Site:	Groves Farm 34-L Pad Sec.34-T7N-R65W	MD Reference:	WELL @ 4867.0ft (Original Well Elev)
Well:	Groves Farm S-34-33HC	North Reference:	True
Wellbore:	Groves Farms S-34-33HC Wellbore #1	Survey Calculation Method:	Minimum Curvature
Design:	Groves Farms S-34-33HC Wellbore #1	Database:	US_EDM

Survey									
Measured Depth (ft)	Inclination (°)	Azimuth (°)	Vertical Depth (ft)	+N/-S (ft)	+E/-W (ft)	Vertical Section (ft)	Dogleg Rate (°/100usft)	Build Rate (°/100usft)	Turn Rate (°/100usft)

Design Targets									
Target Name	Dip Angle (°)	Dip Dir. (°)	TVD (ft)	+N/-S (ft)	+E/-W (ft)	Northing (usft)	Easting (usft)	Latitude	Longitude
- hit/miss target									
- Shape									
SHL 2546'FSL & 894'I	0.00	0.00	1.0	0.0	0.0	1,437,095.80	3,238,240.35	40.530068	-104.642933
- survey hits target center									
- Point									
Projected BHL 1070'F	0.00	0.00	7,210.2	-1,194.3	-9,532.2	1,435,809.47	3,228,720.45	40.526785	-104.677222
- survey misses target center by 0.7ft at 18115.0ft MD (7210.5 TVD, -1193.7 N, -9532.0 E)									
- Point									

Survey Annotations				
Measured Depth (ft)	Vertical Depth (ft)	Local Coordinates		Comment
		+N/-S (ft)	+E/-W (ft)	
7,834.6	7,138.4	-1,398.6	743.1	TPZ - 1170'FSL & 150'FEL, Sec.34

Checked By: _____ Approved By: _____ Date: _____