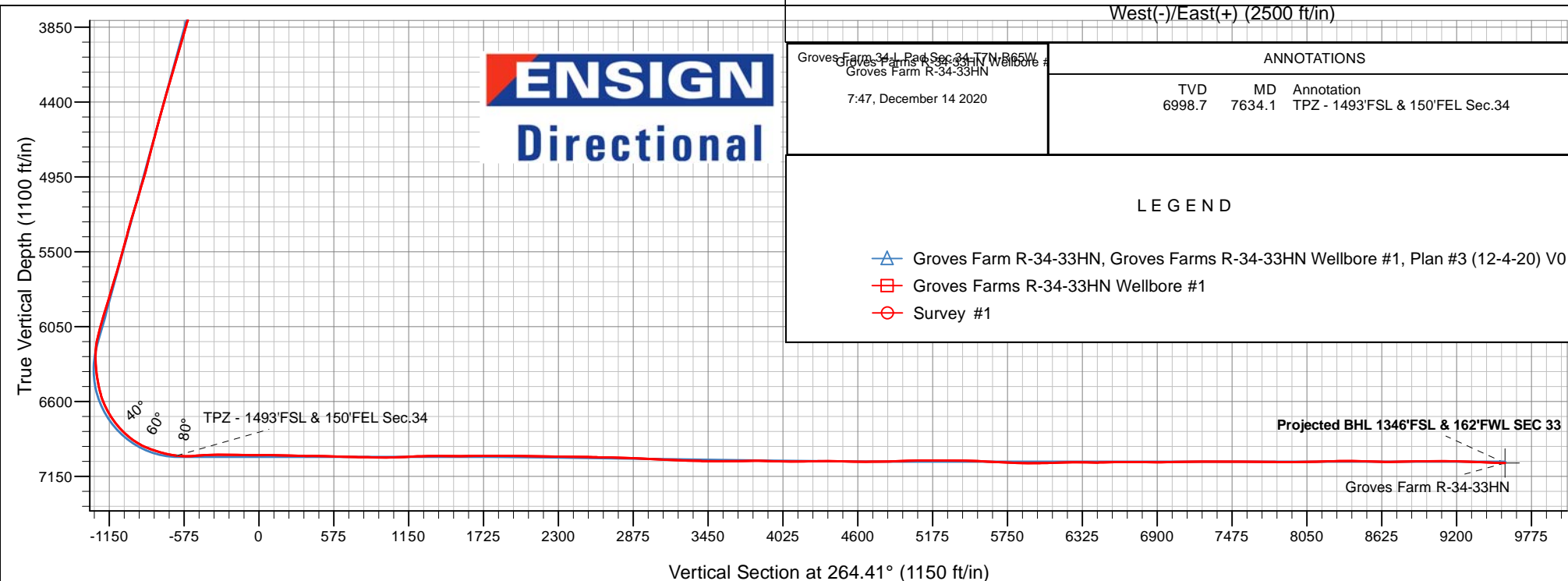
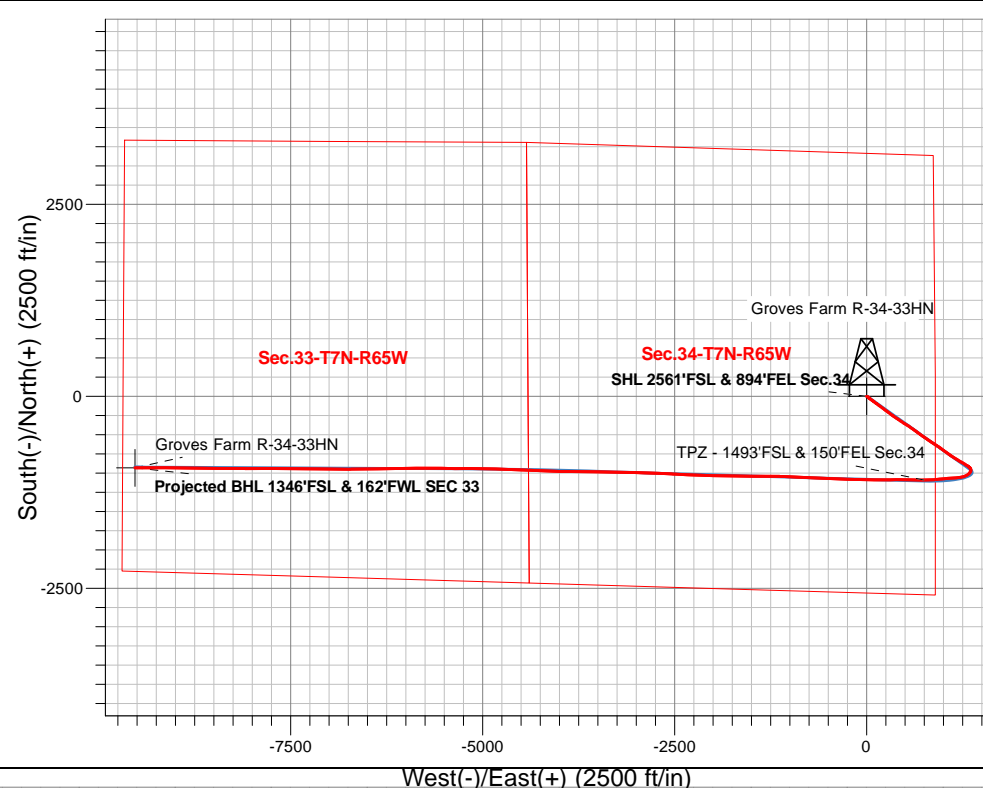


Bayswater Exploration & Production, LLC

Well Name: Groves Farm R-34-33HN
Surface Location: Groves Farm 34-L Pad Sec.34-T7N-R65W
North American Datum 1983 , US State Plane 1983, Colorado Northern Zone
Ground Elevation: 4844.0
+N/-S +E/-W Northing Easting Latitude Longitude Slot
0.0 0.0 1437110.74 3238240.76 40.530109 -104.642931
Original Well Elev WELL @ 4867.0ft (Original Well Elev)

FINAL SURVEY

Projected Bottom Hole Location
17910'MD 7053'TVD 933'S & 9526'W
of SHL 87.39° Inc @ 270.11° Azm



Bayswater Exploration & Production, LLC

SEC.34-T7N-R65W

Groves Farm 34-L Pad Sec.34-T7N-R65W

Groves Farm R-34-33HN

Groves Farms R-34-33HN Wellbore #1

Survey: Survey #1

Standard Survey Report

14 December, 2020

Ensign Energy Services Inc.

Survey Report

Company:	Bayswater Exploration & Production, LLC	Local Co-ordinate Reference:	Well Groves Farm R-34-33HN
Project:	SEC.34-T7N-R65W	TVD Reference:	WELL @ 4867.0ft (Original Well Elev)
Site:	Groves Farm 34-L Pad Sec.34-T7N-R65W	MD Reference:	WELL @ 4867.0ft (Original Well Elev)
Well:	Groves Farm R-34-33HN	North Reference:	True
Wellbore:	Groves Farms R-34-33HN Wellbore #1	Survey Calculation Method:	Minimum Curvature
Design:	Groves Farms R-34-33HN Wellbore #1	Database:	US_EDM

Project	SEC.34-T7N-R65W, Weld County, CO		
Map System:	US State Plane 1983	System Datum:	Mean Sea Level
Geo Datum:	North American Datum 1983		Using Well Reference Point
Map Zone:	Colorado Northern Zone		Using geodetic scale factor

Site	Groves Farm 34-L Pad Sec.34-T7N-R65W				
Site Position:		Northing:	1,437,170.88 usft	Latitude:	40.530274
From:	Lat/Long	Easting:	3,238,241.57 usft	Longitude:	-104.642926
Position Uncertainty:	0.0 ft	Slot Radius:	13-3/16 "	Grid Convergence:	0.55 °

Well	Groves Farm R-34-33HN					
Well Position	+N-S	0.0 ft	Northing:	1,437,110.74 usft	Latitude:	40.530109
	+E-W	0.0 ft	Easting:	3,238,240.76 usft	Longitude:	-104.642931
Position Uncertainty		0.0 ft	Wellhead Elevation:	0.0 ft	Ground Level:	4,844.0 ft

Wellbore	Groves Farms R-34-33HN Wellbore #1				
Magnetics	Model Name	Sample Date	Declination (°)	Dip Angle (°)	Field Strength (nT)
	HDGM	12/04/2020	7.75	66.85	52,059

Design	Groves Farms R-34-33HN Wellbore #1				
Audit Notes:					
Version:	1.0	Phase:	ACTUAL	Tie On Depth:	0.0
Vertical Section:	Depth From (TVD) (ft)	+N/-S (ft)	+E/-W (ft)	Direction (°)	
	0.0	0.0	0.0	264.48	

Survey Program	Date	12/14/2020			
From (ft)	To (ft)	Survey (Wellbore)	Tool Name	Description	
207.0	17,910.0	Survey #1 (Groves Farms R-34-33HN We	MWD	MWD - Standard	

Survey										
Measured Depth (ft)	Inclination (°)	Azimuth (°)	Vertical Depth (ft)	+N/-S (ft)	+E/-W (ft)	Vertical Section (ft)	Dogleg Rate (°/100usft)	Build Rate (°/100usft)	Turn Rate (°/100usft)	
0.0	0.00	0.00	0.0	0.0	0.0	0.0	0.00	0.00	0.00	
207.0	0.35	324.88	207.0	0.5	-0.4	0.3	0.17	0.17	0.00	
297.0	0.09	189.00	297.0	0.7	-0.5	0.5	0.47	-0.29	-150.98	
386.0	0.09	163.69	386.0	0.5	-0.5	0.5	0.04	0.00	-28.44	
475.0	0.09	103.57	475.0	0.5	-0.4	0.4	0.10	0.00	-67.55	
565.0	0.18	118.34	565.0	0.4	-0.2	0.2	0.11	0.10	16.41	
653.0	0.26	129.76	653.0	0.2	0.0	0.0	0.10	0.09	12.98	
743.0	0.35	128.53	743.0	-0.1	0.4	-0.4	0.10	0.10	-1.37	
832.0	0.35	141.72	832.0	-0.5	0.8	-0.7	0.09	0.00	14.82	
921.0	0.79	123.08	921.0	-1.1	1.5	-1.4	0.53	0.49	-20.94	

Ensign Energy Services Inc.

Survey Report

Company:	Bayswater Exploration & Production, LLC	Local Co-ordinate Reference:	Well Groves Farm R-34-33HN
Project:	SEC.34-T7N-R65W	TVD Reference:	WELL @ 4867.0ft (Original Well Elev)
Site:	Groves Farm 34-L Pad Sec.34-T7N-R65W	MD Reference:	WELL @ 4867.0ft (Original Well Elev)
Well:	Groves Farm R-34-33HN	North Reference:	True
Wellbore:	Groves Farms R-34-33HN Wellbore #1	Survey Calculation Method:	Minimum Curvature
Design:	Groves Farms R-34-33HN Wellbore #1	Database:	US_EDM

Survey

Measured Depth (ft)	Inclination (°)	Azimuth (°)	Vertical Depth (ft)	+N/-S (ft)	+E/-W (ft)	Vertical Section (ft)	Dogleg Rate (°/100usft)	Build Rate (°/100usft)	Turn Rate (°/100usft)
1,010.0	0.97	116.75	1,010.0	-1.7	2.7	-2.5	0.23	0.20	-7.11
1,099.0	1.58	121.15	1,099.0	-2.7	4.4	-4.1	0.69	0.69	4.94
1,189.0	2.11	125.90	1,188.9	-4.3	6.8	-6.3	0.61	0.59	5.28
1,278.0	2.46	124.31	1,277.8	-6.4	9.7	-9.0	0.40	0.39	-1.79
1,368.0	2.81	123.08	1,367.7	-8.6	13.1	-12.2	0.39	0.39	-1.37
1,457.0	3.25	122.03	1,456.6	-11.2	17.1	-15.9	0.50	0.49	-1.18
1,470.9	3.27	122.22	1,470.5	-11.6	17.8	-16.6	0.16	0.14	1.37
1,484.8	3.30	122.40	1,484.4	-12.0	18.4	-17.2	0.23	0.22	1.29
1,498.7	3.33	122.58	1,498.3	-12.5	19.1	-17.8	0.23	0.22	1.29
1,512.6	3.36	122.77	1,512.1	-12.9	19.8	-18.5	0.23	0.22	1.37
1,526.5	3.39	122.96	1,526.0	-13.3	20.5	-19.1	0.23	0.22	1.37
1,540.4	3.41	123.15	1,539.9	-13.8	21.2	-19.8	0.17	0.14	1.37
1,554.3	3.44	123.35	1,553.8	-14.2	21.9	-20.4	0.23	0.22	1.44
1,568.2	3.46	123.54	1,567.6	-14.7	22.6	-21.1	0.17	0.14	1.37
1,582.1	3.47	123.73	1,581.5	-15.2	23.3	-21.7	0.11	0.07	1.37
1,596.0	3.47	123.90	1,595.4	-15.6	24.0	-22.4	0.07	0.00	1.22
1,609.0	3.46	124.02	1,608.4	-16.1	24.6	-23.0	0.10	-0.08	0.92
1,622.0	3.44	124.13	1,621.3	-16.5	25.3	-23.6	0.16	-0.15	0.85
1,635.0	3.41	124.26	1,634.3	-17.0	25.9	-24.2	0.24	-0.23	1.00
1,648.0	3.38	124.42	1,647.3	-17.4	26.5	-24.8	0.24	-0.23	1.23
1,661.0	3.37	124.65	1,660.3	-17.8	27.2	-25.3	0.13	-0.08	1.77
1,674.0	3.54	125.65	1,673.2	-18.3	27.8	-25.9	1.39	1.31	7.69
1,687.0	4.61	128.86	1,686.2	-18.8	28.6	-26.6	8.41	8.23	24.69
1,701.8	4.64	129.35	1,701.0	-19.6	29.5	-27.5	0.33	0.20	3.30
1,716.7	4.68	129.93	1,715.8	-20.4	30.4	-28.3	0.42	0.27	3.91
1,731.5	4.73	130.60	1,730.6	-21.1	31.3	-29.2	0.50	0.34	4.52
1,746.3	4.79	131.34	1,745.3	-21.9	32.3	-30.0	0.58	0.40	4.99
1,761.2	4.85	132.18	1,760.1	-22.8	33.2	-30.8	0.62	0.40	5.66
1,776.0	6.06	132.15	1,774.9	-23.7	34.2	-31.8	8.16	8.16	-0.20
1,790.8	6.95	131.32	1,789.6	-24.8	35.5	-32.9	6.03	6.00	-5.60
1,805.7	7.01	132.46	1,804.4	-26.0	36.8	-34.2	1.02	0.40	7.68
1,820.5	7.07	133.65	1,819.1	-27.3	38.2	-35.4	1.06	0.40	8.02
1,835.3	7.13	134.80	1,833.8	-28.6	39.5	-36.5	1.04	0.40	7.75
1,850.2	7.18	135.78	1,848.5	-29.9	40.8	-37.7	0.89	0.34	6.60
1,865.0	8.67	132.37	1,863.2	-31.3	42.2	-39.0	10.53	10.05	-22.99
1,880.0	9.67	130.81	1,878.0	-32.9	44.0	-40.7	6.87	6.67	-10.40
1,895.0	9.66	130.99	1,892.8	-34.5	45.9	-42.4	0.21	-0.07	1.20
1,910.0	9.64	131.06	1,907.6	-36.2	47.8	-44.1	0.15	-0.13	0.47
1,925.0	9.62	131.01	1,922.4	-37.8	49.7	-45.9	0.14	-0.13	-0.33
1,940.0	9.61	130.81	1,937.2	-39.5	51.6	-47.6	0.23	-0.07	-1.33
1,955.0	11.17	130.26	1,951.9	-41.2	53.7	-49.5	10.42	10.40	-3.67
1,969.8	11.40	129.67	1,966.5	-43.1	55.9	-51.5	1.74	1.55	-3.98
1,984.7	11.43	128.96	1,981.0	-45.0	58.2	-53.6	0.97	0.20	-4.78
1,999.5	11.48	128.23	1,995.5	-46.8	60.5	-55.7	1.03	0.34	-4.92

Ensign Energy Services Inc.

Survey Report

Company:	Bayswater Exploration & Production, LLC	Local Co-ordinate Reference:	Well Groves Farm R-34-33HN
Project:	SEC.34-T7N-R65W	TVD Reference:	WELL @ 4867.0ft (Original Well Elev)
Site:	Groves Farm 34-L Pad Sec.34-T7N-R65W	MD Reference:	WELL @ 4867.0ft (Original Well Elev)
Well:	Groves Farm R-34-33HN	North Reference:	True
Wellbore:	Groves Farms R-34-33HN Wellbore #1	Survey Calculation Method:	Minimum Curvature
Design:	Groves Farms R-34-33HN Wellbore #1	Database:	US_EDM

Survey

Measured Depth (ft)	Inclination (°)	Azimuth (°)	Vertical Depth (ft)	+N/-S (ft)	+E/-W (ft)	Vertical Section (ft)	Dogleg Rate (°/100usft)	Build Rate (°/100usft)	Turn Rate (°/100usft)
2,014.3	11.55	127.57	2,010.1	-48.6	62.8	-57.8	1.01	0.47	-4.45
2,029.2	11.66	127.12	2,024.6	-50.4	65.2	-60.0	0.96	0.74	-3.03
2,044.0	12.51	122.07	2,039.1	-52.2	67.7	-62.4	9.14	5.73	-34.05
2,059.0	12.94	121.00	2,053.7	-53.9	70.6	-65.0	3.27	2.87	-7.13
2,074.0	13.23	121.42	2,068.3	-55.7	73.5	-67.8	2.03	1.93	2.80
2,089.0	13.53	121.93	2,082.9	-57.5	76.4	-70.5	2.15	2.00	3.40
2,104.0	13.82	122.45	2,097.5	-59.4	79.4	-73.3	2.10	1.93	3.47
2,119.0	14.06	122.93	2,112.1	-61.3	82.5	-76.2	1.78	1.60	3.20
2,134.0	15.26	127.52	2,126.6	-63.5	85.6	-79.0	11.13	8.00	30.60
2,148.8	16.82	129.03	2,140.8	-66.1	88.8	-82.0	10.89	10.52	10.18
2,163.7	16.77	129.31	2,155.0	-68.8	92.1	-85.1	0.64	-0.34	1.89
2,178.5	16.68	129.56	2,169.2	-71.5	95.4	-88.1	0.78	-0.61	1.69
2,193.3	16.57	129.74	2,183.5	-74.2	98.7	-91.1	0.82	-0.74	1.21
2,208.2	16.49	129.80	2,197.7	-76.9	101.9	-94.0	0.55	-0.54	0.40
2,223.0	18.09	127.57	2,211.8	-79.6	105.3	-97.2	11.68	10.79	-15.04
2,237.8	18.46	126.86	2,225.9	-82.5	109.1	-100.6	2.91	2.49	-4.79
2,252.7	18.54	126.38	2,240.0	-85.3	112.8	-104.1	1.16	0.54	-3.23
2,267.5	18.65	125.85	2,254.1	-88.0	116.7	-107.6	1.36	0.74	-3.57
2,282.3	18.76	125.33	2,268.1	-90.8	120.5	-111.2	1.35	0.74	-3.51
2,297.2	18.85	124.88	2,282.1	-93.6	124.4	-114.8	1.15	0.61	-3.03
2,312.0	19.79	126.10	2,296.1	-96.4	128.4	-118.6	6.90	6.34	8.23
2,327.0	20.56	126.69	2,310.2	-99.5	132.6	-122.4	5.31	5.13	3.93
2,342.0	20.59	126.63	2,324.3	-102.6	136.8	-126.3	0.24	0.20	-0.40
2,357.0	20.60	126.62	2,338.3	-105.8	141.1	-130.2	0.07	0.07	-0.07
2,372.0	20.61	126.65	2,352.3	-108.9	145.3	-134.1	0.10	0.07	0.20
2,387.0	20.61	126.70	2,366.4	-112.1	149.5	-138.0	0.12	0.00	0.33
2,402.0	22.45	125.91	2,380.3	-115.3	154.0	-142.1	12.42	12.27	-5.27
2,417.0	22.45	126.02	2,394.2	-118.7	158.6	-146.4	0.28	0.00	0.73
2,432.0	22.46	126.14	2,408.1	-122.1	163.2	-150.7	0.31	0.07	0.80
2,447.0	22.46	126.27	2,421.9	-125.5	167.9	-155.0	0.33	0.00	0.87
2,462.0	22.45	126.40	2,435.8	-128.9	172.5	-159.3	0.34	-0.07	0.87
2,477.0	22.43	126.51	2,449.7	-132.3	177.1	-163.5	0.31	-0.13	0.73
2,492.0	22.39	126.59	2,463.5	-135.7	181.7	-167.8	0.34	-0.27	0.53
2,506.8	22.32	126.60	2,477.2	-139.0	186.2	-171.9	0.47	-0.47	0.07
2,521.7	22.24	126.57	2,491.0	-142.4	190.7	-176.1	0.54	-0.54	-0.20
2,536.5	22.14	126.53	2,504.7	-145.7	195.2	-180.3	0.68	-0.67	-0.27
2,551.3	22.03	126.48	2,518.4	-149.0	199.7	-184.4	0.75	-0.74	-0.34
2,566.2	21.93	126.45	2,532.2	-152.3	204.2	-188.6	0.68	-0.67	-0.20
2,581.0	21.83	126.43	2,546.0	-155.6	208.6	-192.7	0.68	-0.67	-0.13
2,596.0	21.73	126.47	2,559.9	-158.9	213.1	-196.8	0.67	-0.67	0.27
2,611.0	21.64	126.53	2,573.8	-162.2	217.5	-200.9	0.62	-0.60	0.40
2,626.0	21.55	126.61	2,587.8	-165.5	222.0	-205.0	0.63	-0.60	0.53
2,641.0	21.48	126.68	2,601.7	-168.8	226.4	-209.1	0.50	-0.47	0.47

Ensign Energy Services Inc.

Survey Report

Company:	Bayswater Exploration & Production, LLC	Local Co-ordinate Reference:	Well Groves Farm R-34-33HN
Project:	SEC.34-T7N-R65W	TVD Reference:	WELL @ 4867.0ft (Original Well Elev)
Site:	Groves Farm 34-L Pad Sec.34-T7N-R65W	MD Reference:	WELL @ 4867.0ft (Original Well Elev)
Well:	Groves Farm R-34-33HN	North Reference:	True
Wellbore:	Groves Farms R-34-33HN Wellbore #1	Survey Calculation Method:	Minimum Curvature
Design:	Groves Farms R-34-33HN Wellbore #1	Database:	US_EDM

Survey

Measured Depth (ft)	Inclination (°)	Azimuth (°)	Vertical Depth (ft)	+N/-S (ft)	+E/-W (ft)	Vertical Section (ft)	Dogleg Rate (°/100usft)	Build Rate (°/100usft)	Turn Rate (°/100usft)
2,656.0	21.40	126.75	2,615.7	-172.1	230.8	-213.1	0.56	-0.53	0.47
2,671.0	21.34	126.80	2,629.7	-175.3	235.2	-217.2	0.42	-0.40	0.33
2,685.8	21.30	126.80	2,643.5	-178.6	239.5	-221.2	0.27	-0.27	0.00
2,700.7	21.26	126.79	2,657.3	-181.8	243.8	-225.2	0.27	-0.27	-0.07
2,715.5	21.23	126.75	2,671.1	-185.0	248.1	-229.1	0.22	-0.20	-0.27
2,730.3	21.21	126.72	2,685.0	-188.2	252.4	-233.1	0.15	-0.13	-0.20
2,745.2	21.19	126.70	2,698.8	-191.4	256.7	-237.1	0.14	-0.13	-0.13
2,760.0	21.16	126.69	2,712.6	-194.6	261.0	-241.1	0.20	-0.20	-0.07
2,775.0	21.13	126.72	2,726.6	-197.9	265.3	-245.1	0.21	-0.20	0.20
2,790.0	21.11	126.77	2,740.6	-201.1	269.7	-249.1	0.18	-0.13	0.33
2,805.0	21.07	126.83	2,754.6	-204.3	274.0	-253.0	0.30	-0.27	0.40
2,820.0	21.04	126.90	2,768.6	-207.6	278.3	-257.0	0.26	-0.20	0.47
2,835.0	21.00	126.98	2,782.6	-210.8	282.6	-261.0	0.33	-0.27	0.53
2,850.0	20.96	127.06	2,796.6	-214.0	286.9	-265.0	0.33	-0.27	0.53
2,865.0	20.91	127.14	2,810.6	-217.3	291.2	-268.9	0.38	-0.33	0.53
2,880.0	20.86	127.22	2,824.6	-220.5	295.4	-272.8	0.38	-0.33	0.53
2,895.0	20.80	127.29	2,838.7	-223.7	299.7	-276.7	0.43	-0.40	0.47
2,910.0	20.75	127.34	2,852.7	-227.0	303.9	-280.6	0.35	-0.33	0.33
2,925.0	20.70	127.38	2,866.7	-230.2	308.1	-284.5	0.35	-0.33	0.27
2,940.0	20.66	127.37	2,880.7	-233.4	312.3	-288.4	0.27	-0.27	-0.07
2,954.0	20.65	127.32	2,893.8	-236.4	316.3	-292.0	0.14	-0.07	-0.36
2,968.0	20.65	127.23	2,906.9	-239.4	320.2	-295.7	0.23	0.00	-0.64
2,982.0	20.66	127.13	2,920.0	-242.4	324.1	-299.3	0.26	0.07	-0.71
2,996.0	20.66	127.01	2,933.1	-245.3	328.1	-302.9	0.30	0.00	-0.86
3,010.0	20.66	126.89	2,946.2	-248.3	332.0	-306.6	0.30	0.00	-0.86
3,024.0	21.64	125.04	2,959.3	-251.3	336.1	-310.3	8.47	7.00	-13.21
3,038.0	21.82	124.61	2,972.3	-254.2	340.3	-314.3	1.72	1.29	-3.07
3,052.0	21.78	124.50	2,985.3	-257.2	344.6	-318.3	0.41	-0.29	-0.79
3,067.0	21.71	124.40	2,999.2	-260.3	349.2	-322.5	0.53	-0.47	-0.67
3,082.0	21.63	124.30	3,013.2	-263.5	353.8	-326.8	0.59	-0.53	-0.67
3,097.0	21.53	124.20	3,027.1	-266.6	358.3	-331.0	0.71	-0.67	-0.67
3,112.0	21.42	124.12	3,041.1	-269.6	362.9	-335.3	0.76	-0.73	-0.53
3,127.0	21.32	124.05	3,055.0	-272.7	367.4	-339.5	0.69	-0.67	-0.47
3,142.0	21.21	123.99	3,069.0	-275.7	371.9	-343.7	0.75	-0.73	-0.40
3,156.8	21.12	123.97	3,082.9	-278.7	376.4	-347.8	0.61	-0.61	-0.13
3,171.7	21.03	123.96	3,096.7	-281.7	380.8	-351.9	0.61	-0.61	-0.07
3,186.5	20.94	123.96	3,110.5	-284.7	385.2	-356.0	0.61	-0.61	0.00
3,201.3	20.85	123.97	3,124.4	-287.6	389.6	-360.1	0.61	-0.61	0.07
3,216.2	20.77	123.98	3,138.3	-290.6	394.0	-364.2	0.54	-0.54	0.07
3,231.0	20.68	123.99	3,152.1	-293.5	398.3	-368.2	0.61	-0.61	0.07
3,246.0	20.60	123.99	3,166.2	-296.5	402.7	-372.3	0.53	-0.53	0.00
3,261.0	20.52	123.98	3,180.2	-299.4	407.1	-376.4	0.53	-0.53	-0.07
3,276.0	20.44	123.97	3,194.3	-302.4	411.4	-380.4	0.53	-0.53	-0.07

Ensign Energy Services Inc.

Survey Report

Company:	Bayswater Exploration & Production, LLC	Local Co-ordinate Reference:	Well Groves Farm R-34-33HN
Project:	SEC.34-T7N-R65W	TVD Reference:	WELL @ 4867.0ft (Original Well Elev)
Site:	Groves Farm 34-L Pad Sec.34-T7N-R65W	MD Reference:	WELL @ 4867.0ft (Original Well Elev)
Well:	Groves Farm R-34-33HN	North Reference:	True
Wellbore:	Groves Farms R-34-33HN Wellbore #1	Survey Calculation Method:	Minimum Curvature
Design:	Groves Farms R-34-33HN Wellbore #1	Database:	US_EDM

Survey									
Measured Depth (ft)	Inclination (°)	Azimuth (°)	Vertical Depth (ft)	+N/-S (ft)	+E/-W (ft)	Vertical Section (ft)	Dogleg Rate (°/100usft)	Build Rate (°/100usft)	Turn Rate (°/100usft)
3,291.0	20.37	123.95	3,208.3	-305.3	415.7	-384.4	0.47	-0.47	-0.13
3,306.0	20.30	123.92	3,222.4	-308.2	420.1	-388.5	0.47	-0.47	-0.20
3,321.0	20.25	123.88	3,236.5	-311.1	424.4	-392.5	0.35	-0.33	-0.27
3,335.8	20.22	123.82	3,250.4	-313.9	428.6	-396.4	0.25	-0.20	-0.40
3,350.7	20.21	123.75	3,264.3	-316.8	432.9	-400.4	0.18	-0.07	-0.47
3,365.5	20.19	123.66	3,278.2	-319.6	437.2	-404.4	0.25	-0.13	-0.61
3,380.3	20.16	123.58	3,292.2	-322.5	441.4	-408.3	0.27	-0.20	-0.54
3,395.2	20.10	123.49	3,306.1	-325.3	445.7	-412.3	0.46	-0.40	-0.61
3,410.0	20.01	123.40	3,320.0	-328.1	449.9	-416.3	0.64	-0.61	-0.61
3,424.8	19.85	123.32	3,334.0	-330.9	454.2	-420.2	1.09	-1.08	-0.54
3,439.7	19.65	123.24	3,347.9	-333.6	458.3	-424.1	1.36	-1.35	-0.54
3,454.5	19.43	123.16	3,361.9	-336.3	462.5	-428.0	1.49	-1.48	-0.54
3,469.3	19.20	123.06	3,375.9	-339.0	466.6	-431.8	1.57	-1.55	-0.67
3,484.2	18.99	122.95	3,389.9	-341.7	470.7	-435.6	1.44	-1.42	-0.74
3,499.0	18.81	122.81	3,404.0	-344.3	474.7	-439.4	1.25	-1.21	-0.94
3,513.8	18.69	122.63	3,418.0	-346.9	478.7	-443.1	0.90	-0.81	-1.21
3,528.7	18.59	122.43	3,432.1	-349.4	482.7	-446.9	0.80	-0.67	-1.35
3,543.5	18.50	122.20	3,446.1	-351.9	486.7	-450.6	0.78	-0.61	-1.55
3,558.3	18.41	121.96	3,460.2	-354.4	490.7	-454.3	0.79	-0.61	-1.62
3,573.2	18.28	121.69	3,474.3	-356.9	494.6	-458.0	1.05	-0.88	-1.82
3,588.0	19.17	121.96	3,488.3	-359.4	498.7	-461.8	6.03	6.00	1.82
3,602.8	20.54	122.78	3,502.3	-362.1	502.9	-465.8	9.43	9.24	5.53
3,617.7	20.19	122.40	3,516.2	-364.9	507.3	-469.8	2.52	-2.36	-2.56
3,632.5	19.79	121.98	3,530.1	-367.6	511.6	-473.8	2.87	-2.70	-2.83
3,647.3	19.37	121.55	3,544.1	-370.2	515.8	-477.8	2.99	-2.83	-2.90
3,662.2	18.98	121.18	3,558.1	-372.7	520.0	-481.7	2.75	-2.63	-2.49
3,677.0	18.63	120.90	3,572.1	-375.2	524.1	-485.5	2.44	-2.36	-1.89
3,692.0	18.38	120.87	3,586.4	-377.6	528.2	-489.4	1.67	-1.67	-0.20
3,707.0	18.19	120.96	3,600.6	-380.0	532.2	-493.1	1.28	-1.27	0.60
3,722.0	18.04	121.10	3,614.9	-382.5	536.2	-496.9	1.04	-1.00	0.93
3,737.0	17.92	121.25	3,629.1	-384.9	540.2	-500.6	0.86	-0.80	1.00
3,752.0	17.81	121.34	3,643.4	-387.2	544.1	-504.3	0.76	-0.73	0.60
3,767.0	18.66	124.10	3,657.7	-389.8	548.0	-508.0	8.08	5.67	18.40
3,781.8	19.75	126.46	3,671.7	-392.6	552.0	-511.7	9.02	7.35	15.91
3,796.7	19.65	126.15	3,685.6	-395.6	556.0	-515.4	0.97	-0.67	-2.09
3,811.5	19.57	125.79	3,699.6	-398.5	560.1	-519.1	0.98	-0.54	-2.43
3,826.3	19.49	125.42	3,713.6	-401.4	564.1	-522.9	0.99	-0.54	-2.49
3,841.2	19.41	125.10	3,727.6	-404.2	568.1	-526.6	0.90	-0.54	-2.16
3,856.0	20.89	125.32	3,741.5	-407.2	572.3	-530.5	9.99	9.98	1.48
3,871.0	21.87	125.19	3,755.5	-410.3	576.8	-534.6	6.54	6.53	-0.87
3,886.0	21.81	125.21	3,769.4	-413.5	581.3	-538.8	0.40	-0.40	0.13
3,901.0	21.74	125.28	3,783.3	-416.8	585.9	-543.1	0.50	-0.47	0.47
3,916.0	21.69	125.36	3,797.2	-420.0	590.4	-547.3	0.39	-0.33	0.53
3,931.0	21.64	125.45	3,811.2	-423.2	594.9	-551.4	0.40	-0.33	0.60

Ensign Energy Services Inc.

Survey Report

Company:	Bayswater Exploration & Production, LLC	Local Co-ordinate Reference:	Well Groves Farm R-34-33HN
Project:	SEC.34-T7N-R65W	TVD Reference:	WELL @ 4867.0ft (Original Well Elev)
Site:	Groves Farm 34-L Pad Sec.34-T7N-R65W	MD Reference:	WELL @ 4867.0ft (Original Well Elev)
Well:	Groves Farm R-34-33HN	North Reference:	True
Wellbore:	Groves Farms R-34-33HN Wellbore #1	Survey Calculation Method:	Minimum Curvature
Design:	Groves Farms R-34-33HN Wellbore #1	Database:	US_EDM

Survey

Measured Depth (ft)	Inclination (°)	Azimuth (°)	Vertical Depth (ft)	+N/-S (ft)	+E/-W (ft)	Vertical Section (ft)	Dogleg Rate (°/100usft)	Build Rate (°/100usft)	Turn Rate (°/100usft)
3,946.0	21.60	125.51	3,825.1	-426.4	599.4	-555.6	0.30	-0.27	0.40
3,960.8	21.57	125.51	3,838.9	-429.5	603.9	-559.7	0.20	-0.20	0.00
3,975.7	21.56	125.48	3,852.7	-432.7	608.3	-563.8	0.10	-0.07	-0.20
3,990.5	21.56	125.44	3,866.5	-435.9	612.7	-568.0	0.10	0.00	-0.27
4,005.3	21.57	125.41	3,880.3	-439.0	617.2	-572.1	0.10	0.07	-0.20
4,020.2	21.59	125.40	3,894.1	-442.2	621.6	-576.2	0.14	0.13	-0.07
4,035.0	21.64	125.43	3,907.9	-445.4	626.1	-580.3	0.35	0.34	0.20
4,050.0	21.73	125.54	3,921.8	-448.6	630.6	-584.5	0.66	0.60	0.73
4,065.0	21.83	125.69	3,935.8	-451.8	635.1	-588.7	0.76	0.67	1.00
4,080.0	21.95	125.86	3,949.7	-455.1	639.7	-592.9	0.90	0.80	1.13
4,095.0	22.07	126.03	3,963.6	-458.4	644.2	-597.1	0.91	0.80	1.13
4,110.0	22.17	126.19	3,977.5	-461.7	648.8	-601.3	0.78	0.67	1.07
4,125.0	22.26	126.31	3,991.4	-465.1	653.3	-605.6	0.67	0.60	0.80
4,139.8	22.32	126.37	4,005.1	-468.4	657.9	-609.7	0.43	0.40	0.40
4,154.7	22.35	126.40	4,018.8	-471.8	662.4	-613.9	0.22	0.20	0.20
4,169.5	22.37	126.40	4,032.5	-475.1	667.0	-618.1	0.13	0.13	0.00
4,184.3	22.39	126.37	4,046.2	-478.4	671.5	-622.3	0.16	0.13	-0.20
4,199.2	22.40	126.33	4,060.0	-481.8	676.1	-626.6	0.12	0.07	-0.27
4,214.0	22.42	126.28	4,073.7	-485.1	680.6	-630.8	0.19	0.13	-0.34
4,228.8	22.45	126.19	4,087.4	-488.5	685.2	-635.0	0.31	0.20	-0.61
4,243.7	22.49	126.09	4,101.1	-491.8	689.8	-639.2	0.37	0.27	-0.67
4,258.5	22.52	125.99	4,114.8	-495.2	694.4	-643.5	0.33	0.20	-0.67
4,273.3	22.54	125.87	4,128.5	-498.5	699.0	-647.7	0.34	0.13	-0.81
4,288.2	22.55	125.76	4,142.2	-501.8	703.6	-652.0	0.29	0.07	-0.74
4,303.0	22.52	125.64	4,155.9	-505.2	708.2	-656.3	0.37	-0.20	-0.81
4,317.8	22.44	125.53	4,169.6	-508.5	712.8	-660.6	0.61	-0.54	-0.74
4,332.7	22.33	125.42	4,183.3	-511.7	717.4	-664.8	0.79	-0.74	-0.74
4,347.5	22.19	125.30	4,197.1	-515.0	722.0	-669.1	0.99	-0.94	-0.81
4,362.3	22.03	125.18	4,210.8	-518.2	726.5	-673.3	1.12	-1.08	-0.81
4,377.2	21.86	125.05	4,224.6	-521.4	731.1	-677.5	1.19	-1.15	-0.88
4,392.0	21.66	124.89	4,238.3	-524.6	735.6	-681.7	1.41	-1.35	-1.08
4,407.0	21.44	124.71	4,252.3	-527.7	740.1	-685.9	1.53	-1.47	-1.20
4,422.0	21.21	124.50	4,266.3	-530.8	744.6	-690.1	1.62	-1.53	-1.40
4,437.0	20.98	124.30	4,280.2	-533.8	749.0	-694.2	1.61	-1.53	-1.33
4,452.0	20.76	124.12	4,294.3	-536.8	753.5	-698.3	1.53	-1.47	-1.20
4,467.0	20.58	123.97	4,308.3	-539.8	757.9	-702.4	1.25	-1.20	-1.00
4,482.0	20.44	123.89	4,322.3	-542.7	762.2	-706.4	0.95	-0.93	-0.53
4,496.8	20.41	123.93	4,336.2	-545.6	766.5	-710.4	0.22	-0.20	0.27
4,511.7	20.42	124.04	4,350.2	-548.5	770.8	-714.4	0.27	0.07	0.74
4,526.5	20.45	124.18	4,364.0	-551.4	775.1	-718.4	0.39	0.20	0.94
4,541.3	20.48	124.34	4,377.9	-554.3	779.4	-722.4	0.43	0.20	1.08
4,556.2	20.48	124.49	4,391.8	-557.3	783.7	-726.4	0.35	0.00	1.01
4,571.0	21.58	124.21	4,405.7	-560.3	788.1	-730.5	7.45	7.42	-1.89

Ensign Energy Services Inc.

Survey Report

Company:	Bayswater Exploration & Production, LLC	Local Co-ordinate Reference:	Well Groves Farm R-34-33HN
Project:	SEC.34-T7N-R65W	TVD Reference:	WELL @ 4867.0ft (Original Well Elev)
Site:	Groves Farm 34-L Pad Sec.34-T7N-R65W	MD Reference:	WELL @ 4867.0ft (Original Well Elev)
Well:	Groves Farm R-34-33HN	North Reference:	True
Wellbore:	Groves Farms R-34-33HN Wellbore #1	Survey Calculation Method:	Minimum Curvature
Design:	Groves Farms R-34-33HN Wellbore #1	Database:	US_EDM

Survey

Measured Depth (ft)	Inclination (°)	Azimuth (°)	Vertical Depth (ft)	+N/-S (ft)	+E/-W (ft)	Vertical Section (ft)	Dogleg Rate (°/100usft)	Build Rate (°/100usft)	Turn Rate (°/100usft)
4,586.0	22.31	124.49	4,419.6	-563.4	792.7	-734.8	4.92	4.87	1.87
4,601.0	22.13	124.57	4,433.5	-566.7	797.4	-739.1	1.22	-1.20	0.53
4,616.0	21.92	124.65	4,447.4	-569.9	802.0	-743.4	1.41	-1.40	0.53
4,631.0	21.69	124.70	4,461.3	-573.0	806.6	-747.7	1.54	-1.53	0.33
4,646.0	21.43	124.74	4,475.3	-576.2	811.1	-751.9	1.74	-1.73	0.27
4,661.0	21.16	124.73	4,489.2	-579.3	815.6	-756.0	1.80	-1.80	-0.07
4,675.8	20.87	124.65	4,503.1	-582.3	819.9	-760.1	1.97	-1.96	-0.54
4,690.7	20.58	124.53	4,517.0	-585.3	824.3	-764.1	1.98	-1.95	-0.81
4,705.5	20.29	124.38	4,530.9	-588.2	828.5	-768.1	1.99	-1.96	-1.01
4,720.3	20.01	124.21	4,544.8	-591.1	832.8	-772.0	1.93	-1.89	-1.15
4,735.2	19.76	124.02	4,558.7	-593.9	836.9	-775.9	1.74	-1.68	-1.28
4,750.0	19.55	123.83	4,572.7	-596.7	841.1	-779.7	1.48	-1.42	-1.28
4,764.8	19.44	123.64	4,586.7	-599.5	845.2	-783.6	0.86	-0.74	-1.28
4,779.7	19.36	123.45	4,600.7	-602.2	849.3	-787.4	0.69	-0.54	-1.28
4,794.5	19.30	123.26	4,614.7	-604.9	853.4	-791.2	0.59	-0.40	-1.28
4,809.3	19.24	123.06	4,628.7	-607.6	857.5	-795.0	0.60	-0.40	-1.35
4,824.2	19.16	122.84	4,642.7	-610.2	861.6	-798.9	0.73	-0.54	-1.48
4,839.0	20.02	123.49	4,656.7	-612.9	865.8	-802.7	5.98	5.80	4.38
4,853.8	20.26	123.50	4,670.6	-615.7	870.0	-806.7	1.62	1.62	0.07
4,868.7	20.03	123.20	4,684.5	-618.6	874.3	-810.7	1.70	-1.55	-2.02
4,883.5	19.76	122.87	4,698.5	-621.3	878.5	-814.6	1.97	-1.82	-2.23
4,898.3	19.49	122.56	4,712.4	-624.0	882.7	-818.6	1.95	-1.82	-2.09
4,913.2	19.22	122.27	4,726.4	-626.6	886.9	-822.4	1.93	-1.82	-1.95
4,928.0	18.96	122.04	4,740.4	-629.2	891.0	-826.3	1.83	-1.75	-1.55
4,943.0	18.73	121.95	4,754.6	-631.8	895.1	-830.1	1.55	-1.53	-0.60
4,958.0	18.52	121.94	4,768.9	-634.3	899.1	-833.9	1.40	-1.40	-0.07
4,973.0	18.32	121.95	4,783.1	-636.8	903.2	-837.7	1.33	-1.33	0.07
4,988.0	18.13	121.97	4,797.3	-639.3	907.1	-841.4	1.27	-1.27	0.13
5,003.0	17.95	121.96	4,811.6	-641.8	911.1	-845.1	1.20	-1.20	-0.07
5,018.0	19.14	123.73	4,825.8	-644.4	915.1	-848.8	8.78	7.93	11.80
5,032.8	19.79	124.23	4,839.8	-647.1	919.2	-852.6	4.52	4.38	3.37
5,047.7	19.64	123.98	4,853.8	-649.9	923.3	-856.5	1.16	-1.01	-1.68
5,062.5	19.48	123.71	4,867.7	-652.7	927.5	-860.3	1.24	-1.08	-1.82
5,077.3	19.34	123.46	4,881.7	-655.4	931.6	-864.2	1.10	-0.94	-1.69
5,092.2	19.19	123.28	4,895.7	-658.1	935.6	-868.0	1.09	-1.01	-1.21
5,107.0	19.65	122.98	4,909.7	-660.8	939.8	-871.8	3.17	3.10	-2.02
5,121.8	21.32	123.10	4,923.6	-663.6	944.1	-875.9	11.26	11.26	0.81
5,136.7	21.60	123.94	4,937.4	-666.6	948.7	-880.1	2.80	1.89	5.66
5,151.5	21.51	124.41	4,951.2	-669.7	953.2	-884.3	1.31	-0.61	3.17
5,166.3	21.40	124.92	4,965.0	-672.8	957.6	-888.4	1.46	-0.74	3.44
5,181.2	21.25	125.38	4,978.9	-675.9	962.0	-892.5	1.51	-1.01	3.10
5,196.0	22.61	126.41	4,992.6	-679.1	966.5	-896.7	9.53	9.17	6.95
5,211.0	24.32	127.22	5,006.4	-682.7	971.3	-901.1	11.60	11.40	5.40

Ensign Energy Services Inc.

Survey Report

Company:	Bayswater Exploration & Production, LLC	Local Co-ordinate Reference:	Well Groves Farm R-34-33HN
Project:	SEC.34-T7N-R65W	TVD Reference:	WELL @ 4867.0ft (Original Well Elev)
Site:	Groves Farm 34-L Pad Sec.34-T7N-R65W	MD Reference:	WELL @ 4867.0ft (Original Well Elev)
Well:	Groves Farm R-34-33HN	North Reference:	True
Wellbore:	Groves Farms R-34-33HN Wellbore #1	Survey Calculation Method:	Minimum Curvature
Design:	Groves Farms R-34-33HN Wellbore #1	Database:	US_EDM

Survey

Measured Depth (ft)	Inclination (°)	Azimuth (°)	Vertical Depth (ft)	+N/-S (ft)	+E/-W (ft)	Vertical Section (ft)	Dogleg Rate (°/100usft)	Build Rate (°/100usft)	Turn Rate (°/100usft)
5,226.0	23.86	127.21	5,020.1	-686.4	976.2	-905.6	3.07	-3.07	-0.07
5,241.0	23.34	127.13	5,033.8	-690.0	981.0	-910.0	3.47	-3.47	-0.53
5,256.0	22.82	127.01	5,047.6	-693.6	985.7	-914.3	3.48	-3.47	-0.80
5,271.0	22.34	126.87	5,061.5	-697.1	990.3	-918.6	3.22	-3.20	-0.93
5,286.0	21.96	126.74	5,075.3	-700.4	994.8	-922.8	2.55	-2.53	-0.87
5,301.0	21.77	126.66	5,089.3	-703.8	999.3	-926.9	1.28	-1.27	-0.53
5,316.0	21.67	126.60	5,103.2	-707.1	1,003.7	-931.0	0.68	-0.67	-0.40
5,331.0	21.64	126.56	5,117.1	-710.4	1,008.2	-935.1	0.22	-0.20	-0.27
5,346.0	21.61	126.52	5,131.1	-713.7	1,012.6	-939.2	0.22	-0.20	-0.27
5,361.0	21.55	126.48	5,145.0	-717.0	1,017.0	-943.3	0.41	-0.40	-0.27
5,376.0	22.84	126.17	5,158.9	-720.3	1,021.6	-947.5	8.64	8.60	-2.07
5,390.8	24.54	126.06	5,172.5	-723.8	1,026.4	-952.0	11.47	11.46	-0.74
5,405.7	24.29	126.03	5,186.0	-727.4	1,031.4	-956.6	1.69	-1.68	-0.20
5,420.5	23.99	126.00	5,199.6	-731.0	1,036.3	-961.1	2.02	-2.02	-0.20
5,435.3	23.66	125.95	5,213.1	-734.5	1,041.1	-965.6	2.23	-2.23	-0.34
5,450.2	23.30	125.88	5,226.7	-738.0	1,045.9	-970.0	2.43	-2.43	-0.47
5,465.0	22.92	125.78	5,240.4	-741.4	1,050.6	-974.4	2.58	-2.56	-0.67
5,479.8	22.49	125.61	5,254.1	-744.7	1,055.3	-978.7	2.93	-2.90	-1.15
5,494.7	22.04	125.41	5,267.8	-748.0	1,059.9	-983.0	3.08	-3.03	-1.35
5,509.5	21.59	125.19	5,281.6	-751.2	1,064.4	-987.1	3.08	-3.03	-1.48
5,524.3	21.15	124.96	5,295.4	-754.3	1,068.8	-991.2	3.02	-2.97	-1.55
5,539.2	20.74	124.75	5,309.2	-757.3	1,073.1	-995.3	2.81	-2.76	-1.42
5,554.0	20.38	124.57	5,323.1	-760.3	1,077.4	-999.3	2.46	-2.43	-1.21
5,568.8	20.11	124.48	5,337.0	-763.2	1,081.6	-1,003.2	1.83	-1.82	-0.61
5,583.7	19.88	124.44	5,351.0	-766.1	1,085.8	-1,007.1	1.55	-1.55	-0.27
5,598.5	19.67	124.43	5,364.9	-768.9	1,090.0	-1,010.9	1.42	-1.42	-0.07
5,613.3	19.44	124.42	5,378.9	-771.7	1,094.1	-1,014.7	1.55	-1.55	-0.07
5,628.2	19.18	124.39	5,392.9	-774.5	1,098.1	-1,018.5	1.75	-1.75	-0.20
5,643.0	20.42	122.40	5,406.9	-777.2	1,102.3	-1,022.4	9.52	8.36	-13.42
5,657.8	22.09	123.37	5,420.7	-780.2	1,106.8	-1,026.6	11.51	11.26	6.54
5,672.7	22.12	123.99	5,434.4	-783.3	1,111.5	-1,030.9	1.59	0.20	4.18
5,687.5	21.44	123.89	5,448.2	-786.3	1,116.0	-1,035.2	4.59	-4.59	-0.67
5,702.3	20.74	123.76	5,462.0	-789.3	1,120.5	-1,039.3	4.73	-4.72	-0.88
5,717.2	20.08	123.59	5,475.9	-792.2	1,124.8	-1,043.3	4.47	-4.45	-1.15
5,732.0	19.52	123.34	5,489.9	-794.9	1,129.0	-1,047.2	3.82	-3.78	-1.69
5,747.0	19.16	123.00	5,504.0	-797.7	1,133.1	-1,051.1	2.51	-2.40	-2.27
5,762.0	18.93	122.61	5,518.2	-800.3	1,137.2	-1,054.9	1.75	-1.53	-2.60
5,777.0	18.77	122.19	5,532.4	-802.9	1,141.3	-1,058.8	1.40	-1.07	-2.80
5,792.0	18.64	121.79	5,546.6	-805.5	1,145.4	-1,062.6	1.22	-0.87	-2.67
5,807.0	18.50	121.44	5,560.9	-808.0	1,149.5	-1,066.4	1.19	-0.93	-2.33
5,822.0	19.66	120.59	5,575.0	-810.5	1,153.7	-1,070.3	7.95	7.73	-5.67
5,836.8	21.57	120.68	5,588.9	-813.2	1,158.2	-1,074.5	12.88	12.88	0.61
5,851.7	22.09	120.91	5,602.7	-816.0	1,162.9	-1,079.0	3.55	3.50	1.55
5,866.5	21.82	121.04	5,616.4	-818.8	1,167.7	-1,083.4	1.85	-1.82	0.88

Ensign Energy Services Inc.

Survey Report

Company:	Bayswater Exploration & Production, LLC	Local Co-ordinate Reference:	Well Groves Farm R-34-33HN
Project:	SEC.34-T7N-R65W	TVD Reference:	WELL @ 4867.0ft (Original Well Elev)
Site:	Groves Farm 34-L Pad Sec.34-T7N-R65W	MD Reference:	WELL @ 4867.0ft (Original Well Elev)
Well:	Groves Farm R-34-33HN	North Reference:	True
Wellbore:	Groves Farms R-34-33HN Wellbore #1	Survey Calculation Method:	Minimum Curvature
Design:	Groves Farms R-34-33HN Wellbore #1	Database:	US_EDM

Survey

Measured Depth (ft)	Inclination (°)	Azimuth (°)	Vertical Depth (ft)	+N/-S (ft)	+E/-W (ft)	Vertical Section (ft)	Dogleg Rate (°/100usft)	Build Rate (°/100usft)	Turn Rate (°/100usft)
5,881.3	21.52	121.19	5,630.2	-821.7	1,172.4	-1,087.8	2.06	-2.02	1.01
5,896.2	21.20	121.28	5,644.0	-824.5	1,177.0	-1,092.2	2.17	-2.16	0.61
5,911.0	21.74	122.41	5,657.8	-827.3	1,181.6	-1,096.5	4.59	3.64	7.62
5,926.0	22.98	124.10	5,671.7	-830.5	1,186.4	-1,100.9	9.31	8.27	11.27
5,941.0	22.49	123.59	5,685.5	-833.7	1,191.2	-1,105.4	3.52	-3.27	-3.40
5,956.0	21.98	122.93	5,699.4	-836.8	1,195.9	-1,109.8	3.79	-3.40	-4.40
5,971.0	21.47	122.18	5,713.4	-839.8	1,200.6	-1,114.2	3.87	-3.40	-5.00
5,986.0	21.01	121.40	5,727.3	-842.7	1,205.2	-1,118.5	3.60	-3.07	-5.20
6,001.0	20.62	120.67	5,741.4	-845.4	1,209.8	-1,122.8	3.12	-2.60	-4.87
6,015.7	20.38	120.13	5,755.1	-848.0	1,214.2	-1,127.0	2.08	-1.64	-3.68
6,030.3	20.22	119.68	5,768.9	-850.5	1,218.6	-1,131.1	1.52	-1.09	-3.07
6,045.0	20.11	119.29	5,782.6	-853.0	1,223.0	-1,135.3	1.18	-0.75	-2.66
6,059.7	20.02	118.95	5,796.4	-855.5	1,227.4	-1,139.4	1.00	-0.61	-2.32
6,074.3	19.93	118.65	5,810.2	-857.9	1,231.8	-1,143.5	0.93	-0.61	-2.05
6,089.0	20.01	118.45	5,824.0	-860.3	1,236.2	-1,147.7	0.72	0.55	-1.36
6,104.0	21.36	118.76	5,838.0	-862.8	1,240.9	-1,152.1	9.03	9.00	2.07
6,119.0	22.18	120.05	5,851.9	-865.6	1,245.7	-1,156.6	6.33	5.47	8.60
6,134.0	22.00	120.05	5,865.8	-868.4	1,250.6	-1,161.2	1.20	-1.20	0.00
6,149.0	21.79	120.06	5,879.8	-871.2	1,255.4	-1,165.8	1.40	-1.40	0.07
6,164.0	21.53	120.00	5,893.7	-873.9	1,260.2	-1,170.3	1.74	-1.73	-0.40
6,179.0	22.60	121.85	5,907.6	-876.8	1,265.1	-1,174.8	8.51	7.13	12.33
6,193.8	23.59	124.46	5,921.2	-880.0	1,269.9	-1,179.3	9.60	6.68	17.60
6,208.7	23.07	123.86	5,934.9	-883.3	1,274.8	-1,183.9	3.85	-3.50	-4.04
6,223.5	22.51	123.14	5,948.5	-886.5	1,279.6	-1,188.3	4.22	-3.78	-4.86
6,238.3	21.93	122.36	5,962.3	-889.5	1,284.3	-1,192.7	4.39	-3.91	-5.26
6,253.2	21.37	121.59	5,976.1	-892.4	1,288.9	-1,197.1	4.23	-3.77	-5.19
6,268.0	20.86	120.93	5,989.9	-895.2	1,293.5	-1,201.3	3.79	-3.44	-4.45
6,282.8	20.45	120.59	6,003.8	-897.9	1,298.0	-1,205.6	2.88	-2.76	-2.29
6,297.7	20.09	120.42	6,017.7	-900.5	1,302.4	-1,209.7	2.46	-2.43	-1.15
6,312.5	19.76	120.35	6,031.6	-903.0	1,306.8	-1,213.8	2.23	-2.23	-0.47
6,327.3	19.43	120.35	6,045.6	-905.6	1,311.1	-1,217.8	2.23	-2.23	0.00
6,342.2	19.07	120.40	6,059.6	-908.0	1,315.3	-1,221.8	2.43	-2.43	0.34
6,357.0	19.55	123.51	6,073.6	-910.6	1,319.5	-1,225.7	7.65	3.24	20.97
6,371.8	20.22	127.49	6,087.6	-913.6	1,323.6	-1,229.5	10.18	4.52	26.84
6,386.7	19.63	127.58	6,101.5	-916.6	1,327.6	-1,233.2	3.98	-3.98	0.61
6,401.5	19.00	127.69	6,115.5	-919.6	1,331.5	-1,236.8	4.26	-4.25	0.74
6,416.3	18.38	127.84	6,129.6	-922.5	1,335.2	-1,240.2	4.19	-4.18	1.01
6,431.2	17.74	130.36	6,143.7	-925.4	1,338.8	-1,243.5	6.80	-4.31	16.98
6,446.0	17.07	137.86	6,157.8	-928.5	1,342.0	-1,246.4	15.78	-4.52	50.57
6,460.8	16.46	145.61	6,172.0	-931.9	1,344.6	-1,248.7	15.61	-4.11	52.26
6,475.7	16.11	148.39	6,186.3	-935.4	1,346.9	-1,250.6	5.76	-2.36	18.73
6,490.5	15.71	148.94	6,200.5	-938.8	1,349.0	-1,252.4	2.88	-2.70	3.71
6,505.3	15.33	149.56	6,214.8	-942.2	1,351.0	-1,254.1	2.80	-2.56	4.18

Ensign Energy Services Inc.

Survey Report

Company:	Bayswater Exploration & Production, LLC	Local Co-ordinate Reference:	Well Groves Farm R-34-33HN
Project:	SEC.34-T7N-R65W	TVD Reference:	WELL @ 4867.0ft (Original Well Elev)
Site:	Groves Farm 34-L Pad Sec.34-T7N-R65W	MD Reference:	WELL @ 4867.0ft (Original Well Elev)
Well:	Groves Farm R-34-33HN	North Reference:	True
Wellbore:	Groves Farms R-34-33HN Wellbore #1	Survey Calculation Method:	Minimum Curvature
Design:	Groves Farms R-34-33HN Wellbore #1	Database:	US_EDM

Survey

Measured Depth (ft)	Inclination (°)	Azimuth (°)	Vertical Depth (ft)	+N/-S (ft)	+E/-W (ft)	Vertical Section (ft)	Dogleg Rate (°/100usft)	Build Rate (°/100usft)	Turn Rate (°/100usft)
6,520.2	14.79	152.67	6,229.1	-945.6	1,352.9	-1,255.6	6.55	-3.64	20.96
6,535.0	14.27	161.49	6,243.5	-949.0	1,354.3	-1,256.7	15.31	-3.51	59.47
6,549.8	14.47	171.03	6,257.9	-952.6	1,355.2	-1,257.2	16.00	1.35	64.33
6,564.7	14.44	176.99	6,272.2	-956.3	1,355.6	-1,257.3	10.02	-0.20	40.16
6,579.5	14.10	177.98	6,286.6	-959.9	1,355.8	-1,257.1	2.82	-2.29	6.68
6,594.3	13.77	179.01	6,301.0	-963.5	1,355.8	-1,256.8	2.78	-2.23	6.95
6,609.2	13.43	182.65	6,315.4	-967.0	1,355.8	-1,256.4	6.20	-2.29	24.53
6,624.0	13.42	191.90	6,329.9	-970.4	1,355.4	-1,255.7	14.47	-0.07	62.37
6,639.0	13.95	200.78	6,344.4	-973.8	1,354.4	-1,254.4	14.43	3.53	59.20
6,654.0	13.83	202.53	6,359.0	-977.1	1,353.0	-1,252.7	2.91	-0.80	11.67
6,669.0	13.61	202.39	6,373.6	-980.4	1,351.7	-1,251.0	1.48	-1.47	-0.93
6,684.0	13.41	202.18	6,388.1	-983.7	1,350.3	-1,249.4	1.37	-1.33	-1.40
6,699.0	13.57	205.22	6,402.7	-986.9	1,348.9	-1,247.7	4.85	1.07	20.27
6,714.0	14.28	212.87	6,417.3	-990.0	1,347.2	-1,245.7	13.14	4.73	51.00
6,728.8	14.93	220.56	6,431.6	-993.0	1,345.0	-1,243.1	13.78	4.38	51.85
6,743.7	14.79	220.81	6,446.0	-995.9	1,342.5	-1,240.4	1.04	-0.94	1.68
6,758.5	14.59	220.46	6,460.3	-998.7	1,340.0	-1,237.7	1.48	-1.35	-2.36
6,773.3	14.38	220.12	6,474.7	-1,001.6	1,337.6	-1,235.0	1.53	-1.42	-2.29
6,788.2	14.72	221.46	6,489.1	-1,004.4	1,335.2	-1,232.3	3.22	2.29	9.03
6,803.0	16.20	225.91	6,503.4	-1,007.2	1,332.5	-1,229.3	12.78	9.98	30.01
6,818.0	17.81	230.24	6,517.7	-1,010.2	1,329.2	-1,225.8	13.65	10.73	28.87
6,833.0	19.57	233.72	6,531.9	-1,013.1	1,325.4	-1,221.7	13.89	11.73	23.20
6,848.0	20.09	235.16	6,546.0	-1,016.1	1,321.3	-1,217.3	4.76	3.47	9.60
6,863.0	19.80	235.16	6,560.1	-1,019.0	1,317.1	-1,212.9	1.93	-1.93	0.00
6,878.0	20.34	236.25	6,574.2	-1,021.9	1,312.8	-1,208.4	4.38	3.60	7.27
6,893.0	22.16	238.57	6,588.2	-1,024.8	1,308.2	-1,203.5	13.36	12.13	15.47
6,908.0	24.07	240.57	6,602.0	-1,027.8	1,303.1	-1,198.2	13.77	12.73	13.33
6,923.0	25.94	242.77	6,615.6	-1,030.8	1,297.6	-1,192.3	13.92	12.47	14.67
6,938.0	27.79	244.51	6,629.0	-1,033.8	1,291.5	-1,186.0	13.40	12.33	11.60
6,953.0	28.71	246.78	6,642.2	-1,036.7	1,285.0	-1,179.3	9.43	6.13	15.13
6,968.0	28.46	247.33	6,655.3	-1,039.5	1,278.4	-1,172.4	2.42	-1.67	3.67
6,983.0	30.34	249.34	6,668.4	-1,042.2	1,271.6	-1,165.4	14.15	12.53	13.40
6,997.8	31.63	252.77	6,681.1	-1,044.7	1,264.3	-1,157.9	14.74	8.70	23.13
7,012.7	33.48	254.12	6,693.6	-1,047.0	1,256.7	-1,150.1	13.39	12.47	9.10
7,027.5	35.03	256.33	6,705.9	-1,049.1	1,248.6	-1,141.9	13.40	10.45	14.90
7,042.3	35.33	257.39	6,718.0	-1,051.1	1,240.3	-1,133.4	4.59	2.02	7.15
7,057.2	35.24	257.95	6,730.1	-1,052.9	1,231.9	-1,124.9	2.26	-0.61	3.77
7,072.0	36.72	258.93	6,742.1	-1,054.6	1,223.4	-1,116.2	10.71	9.98	6.61
7,086.8	38.50	260.83	6,753.9	-1,056.2	1,214.5	-1,107.2	14.32	12.00	12.81
7,101.7	40.46	262.46	6,765.3	-1,057.6	1,205.2	-1,097.8	14.94	13.21	10.98
7,116.5	41.77	264.05	6,776.5	-1,058.7	1,195.5	-1,088.0	11.30	8.83	10.72
7,131.3	41.61	264.15	6,787.6	-1,059.8	1,185.7	-1,078.2	1.17	-1.08	0.67
7,146.2	42.22	264.81	6,798.6	-1,060.7	1,175.8	-1,068.2	5.07	4.11	4.45

Ensign Energy Services Inc.

Survey Report

Company:	Bayswater Exploration & Production, LLC	Local Co-ordinate Reference:	Well Groves Farm R-34-33HN
Project:	SEC.34-T7N-R65W	TVD Reference:	WELL @ 4867.0ft (Original Well Elev)
Site:	Groves Farm 34-L Pad Sec.34-T7N-R65W	MD Reference:	WELL @ 4867.0ft (Original Well Elev)
Well:	Groves Farm R-34-33HN	North Reference:	True
Wellbore:	Groves Farms R-34-33HN Wellbore #1	Survey Calculation Method:	Minimum Curvature
Design:	Groves Farms R-34-33HN Wellbore #1	Database:	US_EDM

Survey

Measured Depth (ft)	Inclination (°)	Azimuth (°)	Vertical Depth (ft)	+N/-S (ft)	+E/-W (ft)	Vertical Section (ft)	Dogleg Rate (°/100usft)	Build Rate (°/100usft)	Turn Rate (°/100usft)
7,161.0	44.14	265.63	6,809.4	-1,061.5	1,165.7	-1,058.1	13.49	12.95	5.53
7,176.0	46.51	265.25	6,820.0	-1,062.4	1,155.0	-1,047.4	15.90	15.80	-2.53
7,191.0	48.85	265.46	6,830.1	-1,063.3	1,144.0	-1,036.3	15.63	15.60	1.40
7,206.0	50.43	266.06	6,839.8	-1,064.1	1,132.6	-1,024.9	10.97	10.53	4.00
7,221.0	50.45	266.03	6,849.3	-1,064.9	1,121.1	-1,013.4	0.20	0.13	-0.20
7,236.0	50.94	266.15	6,858.8	-1,065.7	1,109.5	-1,001.8	3.32	3.27	0.80
7,251.0	52.56	266.16	6,868.1	-1,066.5	1,097.7	-990.0	10.80	10.80	0.07
7,265.8	55.00	265.73	6,876.9	-1,067.4	1,085.8	-978.0	16.62	16.45	-2.90
7,280.7	57.40	265.23	6,885.1	-1,068.3	1,073.5	-965.7	16.41	16.17	-3.37
7,295.5	58.27	265.28	6,893.0	-1,069.4	1,061.0	-953.1	5.87	5.87	0.34
7,310.3	58.33	265.43	6,900.8	-1,070.4	1,048.4	-940.5	0.95	0.40	1.01
7,325.2	59.36	265.60	6,908.5	-1,071.4	1,035.7	-927.8	7.01	6.94	1.15
7,340.0	61.83	265.58	6,915.8	-1,072.4	1,022.9	-914.9	16.66	16.66	-0.13
7,354.8	64.31	264.95	6,922.5	-1,073.5	1,009.7	-901.7	17.15	16.72	-4.25
7,369.7	66.67	263.89	6,928.7	-1,074.8	996.3	-888.2	17.18	15.90	-7.14
7,384.5	66.86	264.12	6,934.5	-1,076.2	982.7	-874.6	1.92	1.28	1.55
7,399.3	67.06	264.36	6,940.3	-1,077.6	969.1	-860.9	2.01	1.35	1.62
7,414.2	68.10	264.51	6,946.0	-1,078.9	955.5	-847.2	7.07	7.01	1.01
7,429.0	70.50	264.33	6,951.2	-1,080.3	941.7	-833.3	16.22	16.18	-1.21
7,444.0	73.11	264.02	6,955.9	-1,081.7	927.5	-819.1	17.51	17.40	-2.07
7,459.0	74.22	264.21	6,960.1	-1,083.2	913.2	-804.7	7.50	7.40	1.27
7,474.0	74.31	264.47	6,964.2	-1,084.6	898.8	-790.3	1.77	0.60	1.73
7,489.0	74.41	264.72	6,968.2	-1,086.0	884.4	-775.8	1.74	0.67	1.67
7,504.0	74.37	265.66	6,972.3	-1,087.2	870.0	-761.4	6.04	-0.27	6.27
7,519.0	74.73	267.88	6,976.3	-1,088.0	855.6	-746.9	14.47	2.40	14.80
7,533.8	76.57	268.88	6,979.9	-1,088.4	841.2	-732.6	14.02	12.41	6.74
7,548.7	77.43	268.53	6,983.3	-1,088.7	826.8	-718.2	6.23	5.80	-2.36
7,563.5	77.60	268.49	6,986.5	-1,089.1	812.3	-703.7	1.18	1.15	-0.27
7,578.3	77.76	268.43	6,989.6	-1,089.5	797.8	-689.3	1.15	1.08	-0.40
7,593.2	78.49	268.55	6,992.7	-1,089.9	783.3	-674.8	4.98	4.92	0.81
7,608.0	80.60	268.91	6,995.4	-1,090.2	768.7	-660.2	14.43	14.23	2.43
7,623.0	83.17	269.27	6,997.5	-1,090.4	753.9	-645.4	17.30	17.13	2.40
7,634.1	85.01	269.69	6,998.7	-1,090.5	742.8	-634.4	17.03	16.60	3.80
TPZ - 1493'FSL & 150'FEL Sec.34									
7,638.0	85.66	269.84	6,999.0	-1,090.6	739.0	-630.6	17.03	16.60	3.79
7,653.0	86.70	269.75	7,000.0	-1,090.6	724.0	-615.7	6.96	6.93	-0.60
7,668.0	86.86	269.63	7,000.8	-1,090.7	709.0	-600.7	1.33	1.07	-0.80
7,683.0	87.72	270.15	7,001.5	-1,090.7	694.0	-585.8	6.70	5.73	3.47
7,698.0	89.86	271.16	7,001.8	-1,090.5	679.0	-570.9	15.78	14.27	6.73
7,712.8	91.95	271.71	7,001.6	-1,090.2	664.2	-556.2	14.57	14.09	3.71
7,727.7	92.22	271.69	7,001.1	-1,089.7	649.4	-541.5	1.82	1.82	-0.13
7,742.5	92.50	271.66	7,000.5	-1,089.3	634.6	-526.8	1.90	1.89	-0.20
7,757.3	92.80	271.64	6,999.8	-1,088.9	619.8	-512.1	2.03	2.02	-0.13
7,772.2	93.08	271.62	6,999.0	-1,088.4	605.0	-497.4	1.89	1.89	-0.13

Ensign Energy Services Inc.

Survey Report

Company:	Bayswater Exploration & Production, LLC	Local Co-ordinate Reference:	Well Groves Farm R-34-33HN
Project:	SEC.34-T7N-R65W	TVD Reference:	WELL @ 4867.0ft (Original Well Elev)
Site:	Groves Farm 34-L Pad Sec.34-T7N-R65W	MD Reference:	WELL @ 4867.0ft (Original Well Elev)
Well:	Groves Farm R-34-33HN	North Reference:	True
Wellbore:	Groves Farms R-34-33HN Wellbore #1	Survey Calculation Method:	Minimum Curvature
Design:	Groves Farms R-34-33HN Wellbore #1	Database:	US_EDM

Survey

Measured Depth (ft)	Inclination (°)	Azimuth (°)	Vertical Depth (ft)	+N/-S (ft)	+E/-W (ft)	Vertical Section (ft)	Dogleg Rate (°/100usft)	Build Rate (°/100usft)	Turn Rate (°/100usft)
7,787.0	93.34	271.58	6,998.2	-1,088.0	590.2	-482.7	1.77	1.75	-0.27
7,801.8	93.54	271.52	6,997.3	-1,087.6	575.4	-468.0	1.41	1.35	-0.40
7,816.7	93.71	271.46	6,996.3	-1,087.3	560.5	-453.3	1.21	1.15	-0.40
7,831.5	93.85	271.39	6,995.4	-1,086.9	545.8	-438.6	1.06	0.94	-0.47
7,846.3	93.98	271.32	6,994.4	-1,086.5	531.0	-423.9	1.00	0.88	-0.47
7,861.2	94.09	271.25	6,993.3	-1,086.2	516.2	-409.2	0.88	0.74	-0.47
7,876.0	92.36	270.80	6,992.5	-1,085.9	501.4	-394.5	12.05	-11.67	-3.03
7,891.0	91.30	270.37	6,992.0	-1,085.8	486.4	-379.6	7.63	-7.07	-2.87
7,906.0	91.36	270.32	6,991.7	-1,085.7	471.4	-364.7	0.52	0.40	-0.33
7,921.0	91.42	270.28	6,991.3	-1,085.6	456.4	-349.8	0.48	0.40	-0.27
7,936.0	91.48	270.24	6,990.9	-1,085.5	441.4	-334.9	0.48	0.40	-0.27
7,951.0	90.83	269.74	6,990.6	-1,085.5	426.4	-319.9	5.47	-4.33	-3.33
7,966.0	89.01	269.14	6,990.6	-1,085.7	411.4	-305.0	12.78	-12.13	-4.00
7,981.0	88.59	269.24	6,990.9	-1,085.9	396.4	-290.0	2.88	-2.80	0.67
7,996.0	88.76	269.17	6,991.3	-1,086.1	381.4	-275.1	1.23	1.13	-0.47
8,011.0	88.94	269.10	6,991.6	-1,086.3	366.4	-260.2	1.29	1.20	-0.47
8,026.0	89.13	269.03	6,991.8	-1,086.6	351.4	-245.2	1.35	1.27	-0.47
8,041.0	89.32	268.97	6,992.0	-1,086.8	336.4	-230.2	1.33	1.27	-0.40
8,056.0	89.52	268.92	6,992.2	-1,087.1	321.4	-215.3	1.37	1.33	-0.33
8,070.8	89.71	268.91	6,992.3	-1,087.4	306.6	-200.5	1.28	1.28	-0.07
8,085.7	89.91	268.91	6,992.3	-1,087.7	291.7	-185.7	1.35	1.35	0.00
8,100.5	90.09	268.91	6,992.3	-1,088.0	276.9	-170.9	1.21	1.21	0.00
8,115.3	90.27	268.91	6,992.3	-1,088.3	262.1	-156.1	1.21	1.21	0.00
8,130.2	90.44	268.89	6,992.2	-1,088.5	247.3	-141.3	1.15	1.15	-0.13
8,145.0	89.00	270.34	6,992.3	-1,088.6	232.4	-126.6	13.78	-9.71	9.78
8,159.8	88.78	270.58	6,992.6	-1,088.5	217.6	-111.8	2.20	-1.48	1.62
8,174.7	88.89	270.46	6,992.9	-1,088.4	202.8	-97.1	1.10	0.74	-0.81
8,189.5	89.00	270.33	6,993.1	-1,088.3	187.9	-82.3	1.15	0.74	-0.88
8,204.3	89.10	270.20	6,993.4	-1,088.2	173.1	-67.6	1.11	0.67	-0.88
8,219.2	89.21	270.10	6,993.6	-1,088.2	158.3	-52.8	1.00	0.74	-0.67
8,234.0	89.32	270.02	6,993.8	-1,088.2	143.4	-38.1	0.92	0.74	-0.54
8,249.0	89.47	270.01	6,994.0	-1,088.2	128.4	-23.1	1.00	1.00	-0.07
8,264.0	89.62	270.04	6,994.1	-1,088.1	113.4	-8.2	1.02	1.00	0.20
8,279.0	89.77	270.08	6,994.2	-1,088.1	98.4	6.7	1.03	1.00	0.27
8,294.0	89.92	270.14	6,994.2	-1,088.1	83.4	21.7	1.08	1.00	0.40
8,309.0	90.05	270.20	6,994.2	-1,088.1	68.4	36.6	0.95	0.87	0.40
8,324.0	90.15	270.25	6,994.2	-1,088.0	53.4	51.5	0.75	0.67	0.33
8,338.8	90.21	270.29	6,994.1	-1,087.9	38.6	66.3	0.49	0.40	0.27
8,353.7	90.23	270.32	6,994.1	-1,087.9	23.8	81.0	0.24	0.13	0.20
8,368.5	90.25	270.34	6,994.0	-1,087.8	8.9	95.8	0.19	0.13	0.13
8,383.3	90.28	270.34	6,993.9	-1,087.7	-5.9	110.5	0.20	0.20	0.00
8,398.2	90.33	270.34	6,993.9	-1,087.6	-20.7	125.3	0.34	0.34	0.00
8,413.0	88.73	272.05	6,994.0	-1,087.3	-35.5	140.0	15.79	-10.79	11.53

Ensign Energy Services Inc.

Survey Report

Company:	Bayswater Exploration & Production, LLC	Local Co-ordinate Reference:	Well Groves Farm R-34-33HN
Project:	SEC.34-T7N-R65W	TVD Reference:	WELL @ 4867.0ft (Original Well Elev)
Site:	Groves Farm 34-L Pad Sec.34-T7N-R65W	MD Reference:	WELL @ 4867.0ft (Original Well Elev)
Well:	Groves Farm R-34-33HN	North Reference:	True
Wellbore:	Groves Farms R-34-33HN Wellbore #1	Survey Calculation Method:	Minimum Curvature
Design:	Groves Farms R-34-33HN Wellbore #1	Database:	US_EDM

Survey

Measured Depth (ft)	Inclination (°)	Azimuth (°)	Vertical Depth (ft)	+N/-S (ft)	+E/-W (ft)	Vertical Section (ft)	Dogleg Rate (°/100usft)	Build Rate (°/100usft)	Turn Rate (°/100usft)
8,427.8	87.46	272.57	6,994.5	-1,086.7	-50.4	154.7	9.25	-8.56	3.51
8,442.7	87.63	272.51	6,995.1	-1,086.0	-65.2	169.4	1.21	1.15	-0.40
8,457.5	87.83	272.45	6,995.7	-1,085.4	-80.0	184.1	1.41	1.35	-0.40
8,472.3	88.03	272.37	6,996.2	-1,084.8	-94.8	198.7	1.45	1.35	-0.54
8,487.2	88.22	272.30	6,996.7	-1,084.2	-109.6	213.4	1.36	1.28	-0.47
8,502.0	88.38	272.22	6,997.2	-1,083.6	-124.4	228.1	1.21	1.08	-0.54
8,516.8	88.50	272.14	6,997.6	-1,083.0	-139.2	242.8	0.97	0.81	-0.54
8,531.7	88.58	272.06	6,997.9	-1,082.5	-154.1	257.5	0.76	0.54	-0.54
8,546.5	88.65	271.97	6,998.3	-1,081.9	-168.9	272.2	0.77	0.47	-0.61
8,561.3	88.72	271.88	6,998.6	-1,081.4	-183.7	286.9	0.77	0.47	-0.61
8,576.2	88.79	271.78	6,999.0	-1,081.0	-198.5	301.6	0.82	0.47	-0.67
8,591.0	88.87	271.67	6,999.3	-1,080.5	-213.3	316.3	0.92	0.54	-0.74
8,606.0	88.98	271.53	6,999.5	-1,080.1	-228.3	331.2	1.19	0.73	-0.93
8,621.0	89.11	271.39	6,999.8	-1,079.7	-243.3	346.1	1.27	0.87	-0.93
8,636.0	89.24	271.25	7,000.0	-1,079.4	-258.3	361.0	1.27	0.87	-0.93
8,651.0	89.37	271.12	7,000.2	-1,079.1	-273.3	375.9	1.23	0.87	-0.87
8,666.0	89.50	271.02	7,000.3	-1,078.8	-288.3	390.8	1.09	0.87	-0.67
8,681.0	89.62	270.97	7,000.5	-1,078.5	-303.3	405.7	0.87	0.80	-0.33
8,696.0	89.72	271.00	7,000.5	-1,078.3	-318.3	420.6	0.70	0.67	0.20
8,711.0	89.81	271.08	7,000.6	-1,078.0	-333.3	435.5	0.80	0.60	0.53
8,726.0	89.89	271.18	7,000.6	-1,077.7	-348.3	450.4	0.85	0.53	0.67
8,741.0	89.96	271.29	7,000.7	-1,077.4	-363.3	465.3	0.87	0.47	0.73
8,756.0	90.03	271.38	7,000.7	-1,077.0	-378.3	480.2	0.76	0.47	0.60
8,771.0	88.38	272.22	7,000.9	-1,076.6	-393.3	495.1	12.34	-11.00	5.60
8,786.0	87.87	272.51	7,001.4	-1,075.9	-408.3	509.9	3.91	-3.40	1.93
8,801.0	87.93	272.51	7,001.9	-1,075.3	-423.2	524.8	0.40	0.40	0.00
8,816.0	87.99	272.50	7,002.4	-1,074.6	-438.2	539.6	0.41	0.40	-0.07
8,831.0	88.06	272.49	7,003.0	-1,074.0	-453.2	554.4	0.47	0.47	-0.07
8,846.0	88.11	272.48	7,003.5	-1,073.3	-468.2	569.3	0.34	0.33	-0.07
8,861.0	88.17	272.48	7,004.0	-1,072.7	-483.1	584.1	0.40	0.40	0.00
8,875.8	88.22	272.50	7,004.4	-1,072.0	-498.0	598.8	0.36	0.34	0.13
8,890.7	88.26	272.53	7,004.9	-1,071.4	-512.8	613.5	0.34	0.27	0.20
8,905.5	88.31	272.56	7,005.3	-1,070.7	-527.6	628.2	0.39	0.34	0.20
8,920.3	88.35	272.59	7,005.8	-1,070.1	-542.4	642.9	0.34	0.27	0.20
8,935.2	88.38	272.61	7,006.2	-1,069.4	-557.2	657.5	0.24	0.20	0.13
8,950.0	88.41	272.61	7,006.6	-1,068.7	-572.0	672.2	0.20	0.20	0.00
8,965.0	88.44	272.58	7,007.0	-1,068.0	-587.0	687.1	0.28	0.20	-0.20
8,980.0	88.46	272.54	7,007.4	-1,067.4	-602.0	701.9	0.30	0.13	-0.27
8,995.0	88.47	272.49	7,007.8	-1,066.7	-617.0	716.7	0.34	0.07	-0.33
9,010.0	88.49	272.47	7,008.2	-1,066.1	-631.9	731.6	0.19	0.13	-0.13
9,025.0	88.50	272.47	7,008.6	-1,065.4	-646.9	746.4	0.07	0.07	0.00
9,040.0	89.48	272.19	7,008.9	-1,064.8	-661.9	761.3	6.79	6.53	-1.87
9,054.8	89.48	272.34	7,009.0	-1,064.2	-676.7	776.0	1.01	0.00	1.01
9,069.7	89.49	272.54	7,009.1	-1,063.6	-691.5	790.7	1.35	0.07	1.35

Ensign Energy Services Inc.

Survey Report

Company:	Bayswater Exploration & Production, LLC	Local Co-ordinate Reference:	Well Groves Farm R-34-33HN
Project:	SEC.34-T7N-R65W	TVD Reference:	WELL @ 4867.0ft (Original Well Elev)
Site:	Groves Farm 34-L Pad Sec.34-T7N-R65W	MD Reference:	WELL @ 4867.0ft (Original Well Elev)
Well:	Groves Farm R-34-33HN	North Reference:	True
Wellbore:	Groves Farms R-34-33HN Wellbore #1	Survey Calculation Method:	Minimum Curvature
Design:	Groves Farms R-34-33HN Wellbore #1	Database:	US_EDM

Survey

Measured Depth (ft)	Inclination (°)	Azimuth (°)	Vertical Depth (ft)	+N/-S (ft)	+E/-W (ft)	Vertical Section (ft)	Dogleg Rate (°/100usft)	Build Rate (°/100usft)	Turn Rate (°/100usft)
9,084.5	89.49	272.75	7,009.3	-1,062.9	-706.4	805.4	1.42	0.00	1.42
9,099.3	89.50	272.97	7,009.4	-1,062.2	-721.2	820.0	1.48	0.07	1.48
9,114.2	88.88	273.28	7,009.6	-1,061.3	-736.0	834.7	4.67	-4.18	2.09
9,129.0	88.89	273.42	7,009.9	-1,060.5	-750.8	849.4	0.95	0.07	0.94
9,143.8	88.92	273.48	7,010.2	-1,059.6	-765.6	864.0	0.45	0.20	0.40
9,158.7	88.96	273.49	7,010.5	-1,058.7	-780.4	878.7	0.28	0.27	0.07
9,173.5	89.02	273.48	7,010.7	-1,057.8	-795.2	893.3	0.41	0.40	-0.07
9,188.3	89.09	273.44	7,011.0	-1,056.9	-810.0	908.0	0.54	0.47	-0.27
9,203.2	89.19	273.40	7,011.2	-1,056.0	-824.8	922.6	0.73	0.67	-0.27
9,218.0	89.33	273.36	7,011.4	-1,055.1	-839.6	937.3	0.98	0.94	-0.27
9,233.0	89.53	273.34	7,011.5	-1,054.3	-854.6	952.1	1.34	1.33	-0.13
9,248.0	89.77	273.33	7,011.6	-1,053.4	-869.6	966.9	1.60	1.60	-0.07
9,263.0	90.02	273.32	7,011.6	-1,052.5	-884.5	981.7	1.67	1.67	-0.07
9,278.0	90.28	273.32	7,011.6	-1,051.6	-899.5	996.5	1.73	1.73	0.00
9,293.0	90.54	273.31	7,011.5	-1,050.8	-914.5	1,011.4	1.73	1.73	-0.07
9,308.0	91.40	272.50	7,011.2	-1,050.0	-929.5	1,026.2	7.88	5.73	-5.40
9,322.8	91.95	272.04	7,010.8	-1,049.4	-944.3	1,040.9	4.83	3.71	-3.10
9,337.7	92.13	272.02	7,010.3	-1,048.9	-959.1	1,055.6	1.22	1.21	-0.13
9,352.5	92.31	271.99	7,009.7	-1,048.4	-973.9	1,070.3	1.23	1.21	-0.20
9,367.3	92.47	271.96	7,009.1	-1,047.9	-988.7	1,085.0	1.10	1.08	-0.20
9,382.2	92.62	271.91	7,008.4	-1,047.4	-1,003.5	1,099.7	1.07	1.01	-0.34
9,397.0	92.75	271.85	7,007.7	-1,046.9	-1,018.3	1,114.4	0.97	0.88	-0.40
9,411.8	92.85	271.76	7,007.0	-1,046.4	-1,033.1	1,129.1	0.91	0.67	-0.61
9,426.7	92.94	271.65	7,006.3	-1,046.0	-1,048.0	1,143.8	0.96	0.61	-0.74
9,441.5	93.02	271.53	7,005.5	-1,045.6	-1,062.8	1,158.5	0.97	0.54	-0.81
9,456.3	93.11	271.39	7,004.7	-1,045.2	-1,077.6	1,173.2	1.12	0.61	-0.94
9,471.2	93.22	271.25	7,003.9	-1,044.9	-1,092.4	1,187.9	1.20	0.74	-0.94
9,486.0	91.24	271.33	7,003.3	-1,044.5	-1,107.2	1,202.6	13.36	-13.35	0.54
9,500.8	90.44	271.02	7,003.1	-1,044.2	-1,122.0	1,217.3	5.79	-5.39	-2.09
9,515.7	90.65	270.79	7,002.9	-1,044.0	-1,136.9	1,232.1	2.10	1.42	-1.55
9,530.5	90.88	270.54	7,002.7	-1,043.8	-1,151.7	1,246.8	2.29	1.55	-1.69
9,545.3	91.10	270.30	7,002.5	-1,043.7	-1,166.5	1,261.5	2.20	1.48	-1.62
9,560.2	91.30	270.08	7,002.2	-1,043.6	-1,181.3	1,276.3	2.00	1.35	-1.48
9,575.0	91.46	269.93	7,001.8	-1,043.6	-1,196.2	1,291.1	1.48	1.08	-1.01
9,590.0	91.56	269.87	7,001.4	-1,043.7	-1,211.2	1,306.0	0.78	0.67	-0.40
9,605.0	91.62	269.87	7,001.0	-1,043.7	-1,226.2	1,320.9	0.40	0.40	0.00
9,620.0	91.65	269.91	7,000.6	-1,043.7	-1,241.2	1,335.8	0.33	0.20	0.27
9,635.0	91.66	269.97	7,000.1	-1,043.8	-1,256.1	1,350.8	0.41	0.07	0.40
9,650.0	91.67	270.04	6,999.7	-1,043.8	-1,271.1	1,365.7	0.47	0.07	0.47
9,665.0	90.82	270.29	6,999.4	-1,043.7	-1,286.1	1,380.6	5.91	-5.67	1.67
9,679.8	89.14	270.70	6,999.4	-1,043.6	-1,301.0	1,395.4	11.66	-11.33	2.76
9,694.7	89.11	270.76	6,999.6	-1,043.4	-1,315.8	1,410.1	0.45	-0.20	0.40
9,709.5	89.08	270.82	6,999.8	-1,043.2	-1,330.6	1,424.9	0.45	-0.20	0.40

Ensign Energy Services Inc.

Survey Report

Company:	Bayswater Exploration & Production, LLC	Local Co-ordinate Reference:	Well Groves Farm R-34-33HN
Project:	SEC.34-T7N-R65W	TVD Reference:	WELL @ 4867.0ft (Original Well Elev)
Site:	Groves Farm 34-L Pad Sec.34-T7N-R65W	MD Reference:	WELL @ 4867.0ft (Original Well Elev)
Well:	Groves Farm R-34-33HN	North Reference:	True
Wellbore:	Groves Farms R-34-33HN Wellbore #1	Survey Calculation Method:	Minimum Curvature
Design:	Groves Farms R-34-33HN Wellbore #1	Database:	US_EDM

Survey									
Measured Depth (ft)	Inclination (°)	Azimuth (°)	Vertical Depth (ft)	+N/-S (ft)	+E/-W (ft)	Vertical Section (ft)	Dogleg Rate (°/100usft)	Build Rate (°/100usft)	Turn Rate (°/100usft)
9,724.3	89.06	270.87	7,000.1	-1,043.0	-1,345.5	1,439.6	0.36	-0.13	0.34
9,739.2	89.06	270.91	7,000.3	-1,042.7	-1,360.3	1,454.3	0.27	0.00	0.27
9,754.0	89.11	270.92	7,000.6	-1,042.5	-1,375.1	1,469.1	0.34	0.34	0.07
9,769.0	89.23	270.88	7,000.8	-1,042.3	-1,390.1	1,484.0	0.84	0.80	-0.27
9,784.0	89.39	270.81	7,001.0	-1,042.0	-1,405.1	1,498.9	1.16	1.07	-0.47
9,799.0	89.59	270.73	7,001.1	-1,041.8	-1,420.1	1,513.8	1.44	1.33	-0.53
9,814.0	89.81	270.64	7,001.2	-1,041.7	-1,435.1	1,528.7	1.58	1.47	-0.60
9,829.0	90.04	270.55	7,001.2	-1,041.5	-1,450.1	1,543.6	1.65	1.53	-0.60
9,844.0	90.29	270.47	7,001.2	-1,041.4	-1,465.1	1,558.5	1.75	1.67	-0.53
9,859.0	90.55	270.42	7,001.0	-1,041.3	-1,480.1	1,573.4	1.77	1.73	-0.33
9,874.0	90.81	270.37	7,000.9	-1,041.2	-1,495.1	1,588.4	1.77	1.73	-0.33
9,889.0	91.08	270.34	7,000.6	-1,041.1	-1,510.1	1,603.3	1.81	1.80	-0.20
9,904.0	91.33	270.30	7,000.3	-1,041.0	-1,525.1	1,618.2	1.69	1.67	-0.27
9,919.0	91.57	270.26	6,999.9	-1,040.9	-1,540.1	1,633.1	1.62	1.60	-0.27
9,934.0	90.30	271.17	6,999.7	-1,040.7	-1,555.1	1,648.0	10.42	-8.47	6.07
9,948.8	90.47	271.11	6,999.6	-1,040.4	-1,569.9	1,662.8	1.22	1.15	-0.40
9,963.7	90.62	271.05	6,999.4	-1,040.1	-1,584.8	1,677.5	1.09	1.01	-0.40
9,978.5	90.76	270.98	6,999.3	-1,039.9	-1,599.6	1,692.2	1.06	0.94	-0.47
9,993.3	90.89	270.89	6,999.0	-1,039.6	-1,614.4	1,707.0	1.07	0.88	-0.61
10,008.2	91.04	270.79	6,998.8	-1,039.4	-1,629.2	1,721.7	1.21	1.01	-0.67
10,023.0	89.68	271.25	6,998.7	-1,039.2	-1,644.1	1,736.4	9.68	-9.17	3.10
10,037.8	89.02	271.42	6,998.9	-1,038.8	-1,658.9	1,751.2	4.60	-4.45	1.15
10,052.7	89.23	271.23	6,999.1	-1,038.5	-1,673.7	1,765.9	1.91	1.42	-1.28
10,067.5	89.45	271.03	6,999.3	-1,038.2	-1,688.6	1,780.6	2.00	1.48	-1.35
10,082.3	89.67	270.82	6,999.4	-1,037.9	-1,703.4	1,795.4	2.05	1.48	-1.42
10,097.2	89.89	270.62	6,999.4	-1,037.7	-1,718.2	1,810.1	2.00	1.48	-1.35
10,112.0	90.10	270.45	6,999.4	-1,037.6	-1,733.1	1,824.9	1.82	1.42	-1.15
10,127.0	90.30	270.33	6,999.4	-1,037.5	-1,748.1	1,839.8	1.55	1.33	-0.80
10,142.0	90.47	270.24	6,999.3	-1,037.4	-1,763.1	1,854.7	1.28	1.13	-0.60
10,157.0	90.64	270.16	6,999.1	-1,037.4	-1,778.1	1,869.6	1.25	1.13	-0.53
10,172.0	90.80	270.10	6,999.0	-1,037.3	-1,793.1	1,884.6	1.14	1.07	-0.40
10,187.0	90.96	270.03	6,998.7	-1,037.3	-1,808.0	1,899.5	1.16	1.07	-0.47
10,202.0	89.29	271.11	6,998.7	-1,037.2	-1,823.0	1,914.4	13.26	-11.13	7.20
10,216.8	88.88	271.40	6,998.9	-1,036.9	-1,837.9	1,929.1	3.39	-2.76	1.96
10,231.7	89.04	271.31	6,999.2	-1,036.5	-1,852.7	1,943.9	1.24	1.08	-0.61
10,246.5	89.19	271.22	6,999.4	-1,036.2	-1,867.5	1,958.6	1.18	1.01	-0.61
10,261.3	89.33	271.14	6,999.6	-1,035.9	-1,882.4	1,973.3	1.09	0.94	-0.54
10,276.2	89.47	271.07	6,999.8	-1,035.6	-1,897.2	1,988.0	1.05	0.94	-0.47
10,291.0	89.59	271.02	6,999.9	-1,035.3	-1,912.0	2,002.8	0.88	0.81	-0.34
10,305.8	89.68	271.01	7,000.0	-1,035.1	-1,926.8	2,017.5	0.61	0.61	-0.07
10,320.7	89.75	271.00	7,000.1	-1,034.8	-1,941.7	2,032.3	0.48	0.47	-0.07
10,335.5	89.81	271.01	7,000.1	-1,034.5	-1,956.5	2,047.0	0.41	0.40	0.07
10,350.3	89.86	271.01	7,000.2	-1,034.3	-1,971.3	2,061.7	0.34	0.34	0.00

Ensign Energy Services Inc.

Survey Report

Company:	Bayswater Exploration & Production, LLC	Local Co-ordinate Reference:	Well Groves Farm R-34-33HN
Project:	SEC.34-T7N-R65W	TVD Reference:	WELL @ 4867.0ft (Original Well Elev)
Site:	Groves Farm 34-L Pad Sec.34-T7N-R65W	MD Reference:	WELL @ 4867.0ft (Original Well Elev)
Well:	Groves Farm R-34-33HN	North Reference:	True
Wellbore:	Groves Farms R-34-33HN Wellbore #1	Survey Calculation Method:	Minimum Curvature
Design:	Groves Farms R-34-33HN Wellbore #1	Database:	US_EDM

Survey

Measured Depth (ft)	Inclination (°)	Azimuth (°)	Vertical Depth (ft)	+N/-S (ft)	+E/-W (ft)	Vertical Section (ft)	Dogleg Rate (°/100usft)	Build Rate (°/100usft)	Turn Rate (°/100usft)
10,365.2	89.91	271.00	7,000.2	-1,034.0	-1,986.2	2,076.5	0.34	0.34	-0.07
10,380.0	88.55	271.66	7,000.4	-1,033.7	-2,001.0	2,091.2	10.19	-9.17	4.45
10,394.8	88.19	271.77	7,000.8	-1,033.2	-2,015.8	2,105.9	2.54	-2.43	0.74
10,409.7	88.19	271.67	7,001.3	-1,032.8	-2,030.6	2,120.6	0.67	0.00	-0.67
10,424.5	88.20	271.57	7,001.8	-1,032.4	-2,045.5	2,135.3	0.68	0.07	-0.67
10,439.3	88.21	271.46	7,002.2	-1,032.0	-2,060.3	2,150.0	0.74	0.07	-0.74
10,454.2	88.25	271.37	7,002.7	-1,031.6	-2,075.1	2,164.8	0.66	0.27	-0.61
10,469.0	88.33	271.31	7,003.1	-1,031.3	-2,089.9	2,179.5	0.67	0.54	-0.40
10,483.8	88.49	271.29	7,003.5	-1,030.9	-2,104.7	2,194.2	1.09	1.08	-0.13
10,498.7	88.69	271.31	7,003.9	-1,030.6	-2,119.6	2,208.9	1.35	1.35	0.13
10,513.5	88.91	271.34	7,004.2	-1,030.2	-2,134.4	2,223.6	1.50	1.48	0.20
10,528.3	89.15	271.39	7,004.5	-1,029.9	-2,149.2	2,238.4	1.65	1.62	0.34
10,543.2	89.37	271.46	7,004.6	-1,029.5	-2,164.1	2,253.1	1.56	1.48	0.47
10,558.0	89.59	271.54	7,004.8	-1,029.1	-2,178.9	2,267.8	1.58	1.48	0.54
10,573.0	89.76	271.64	7,004.9	-1,028.7	-2,193.9	2,282.7	1.31	1.13	0.67
10,588.0	89.91	271.75	7,004.9	-1,028.3	-2,208.9	2,297.6	1.24	1.00	0.73
10,603.0	90.05	271.87	7,004.9	-1,027.8	-2,223.9	2,312.5	1.23	0.93	0.80
10,618.0	90.17	271.98	7,004.9	-1,027.3	-2,238.9	2,327.3	1.09	0.80	0.73
10,633.0	90.30	272.10	7,004.8	-1,026.8	-2,253.8	2,342.2	1.18	0.87	0.80
10,648.0	89.11	272.73	7,004.9	-1,026.1	-2,268.8	2,357.1	8.98	-7.93	4.20
10,663.0	88.66	273.06	7,005.2	-1,025.4	-2,283.8	2,371.9	3.72	-3.00	2.20
10,678.0	88.78	273.17	7,005.5	-1,024.6	-2,298.8	2,386.7	1.09	0.80	0.73
10,693.0	88.91	273.27	7,005.8	-1,023.7	-2,313.8	2,401.5	1.09	0.87	0.67
10,708.0	89.03	273.37	7,006.1	-1,022.8	-2,328.7	2,416.4	1.04	0.80	0.67
10,723.0	89.13	273.46	7,006.3	-1,021.9	-2,343.7	2,431.2	0.90	0.67	0.60
10,738.0	89.22	273.52	7,006.6	-1,021.0	-2,358.7	2,446.0	0.72	0.60	0.40
10,752.8	89.27	273.55	7,006.8	-1,020.1	-2,373.5	2,460.6	0.39	0.34	0.20
10,767.7	89.31	273.56	7,006.9	-1,019.2	-2,388.3	2,475.3	0.28	0.27	0.07
10,782.5	89.34	273.56	7,007.1	-1,018.3	-2,403.1	2,489.9	0.20	0.20	0.00
10,797.3	89.38	273.55	7,007.3	-1,017.4	-2,417.9	2,504.6	0.28	0.27	-0.07
10,812.2	89.44	273.54	7,007.4	-1,016.4	-2,432.7	2,519.2	0.41	0.40	-0.07
10,827.0	88.13	273.12	7,007.7	-1,015.6	-2,447.5	2,533.9	9.28	-8.83	-2.83
10,841.8	87.87	273.00	7,008.3	-1,014.8	-2,462.3	2,548.5	1.93	-1.75	-0.81
10,856.7	88.03	273.00	7,008.8	-1,014.0	-2,477.1	2,563.2	1.08	1.08	0.00
10,871.5	88.21	273.00	7,009.3	-1,013.2	-2,491.9	2,577.9	1.21	1.21	0.00
10,886.3	88.40	272.99	7,009.7	-1,012.5	-2,506.7	2,592.5	1.28	1.28	-0.07
10,901.2	88.59	272.97	7,010.1	-1,011.7	-2,521.5	2,607.2	1.29	1.28	-0.13
10,916.0	88.77	272.93	7,010.5	-1,010.9	-2,536.3	2,621.8	1.24	1.21	-0.27
10,931.0	88.94	272.86	7,010.7	-1,010.2	-2,551.3	2,636.7	1.23	1.13	-0.47
10,946.0	89.09	272.78	7,011.0	-1,009.4	-2,566.3	2,651.5	1.13	1.00	-0.53
10,961.0	89.23	272.68	7,011.2	-1,008.7	-2,581.3	2,666.4	1.15	0.93	-0.67
10,976.0	89.35	272.59	7,011.4	-1,008.0	-2,596.3	2,681.2	1.00	0.80	-0.60
10,991.0	89.45	272.50	7,011.6	-1,007.4	-2,611.2	2,696.1	0.90	0.67	-0.60
11,006.0	89.52	272.42	7,011.7	-1,006.7	-2,626.2	2,710.9	0.71	0.47	-0.53

Ensign Energy Services Inc.

Survey Report

Company:	Bayswater Exploration & Production, LLC	Local Co-ordinate Reference:	Well Groves Farm R-34-33HN
Project:	SEC.34-T7N-R65W	TVD Reference:	WELL @ 4867.0ft (Original Well Elev)
Site:	Groves Farm 34-L Pad Sec.34-T7N-R65W	MD Reference:	WELL @ 4867.0ft (Original Well Elev)
Well:	Groves Farm R-34-33HN	North Reference:	True
Wellbore:	Groves Farms R-34-33HN Wellbore #1	Survey Calculation Method:	Minimum Curvature
Design:	Groves Farms R-34-33HN Wellbore #1	Database:	US_EDM

Survey

Measured Depth (ft)	Inclination (°)	Azimuth (°)	Vertical Depth (ft)	+N/-S (ft)	+E/-W (ft)	Vertical Section (ft)	Dogleg Rate (°/100usft)	Build Rate (°/100usft)	Turn Rate (°/100usft)
11,020.8	89.55	272.36	7,011.8	-1,006.1	-2,641.0	2,725.6	0.45	0.20	-0.40
11,035.7	89.54	272.31	7,011.9	-1,005.5	-2,655.9	2,740.3	0.34	-0.07	-0.34
11,050.5	89.52	272.27	7,012.1	-1,004.9	-2,670.7	2,755.0	0.30	-0.13	-0.27
11,065.3	89.48	272.22	7,012.2	-1,004.3	-2,685.5	2,769.7	0.43	-0.27	-0.34
11,080.2	89.42	272.17	7,012.3	-1,003.8	-2,700.3	2,784.4	0.53	-0.40	-0.34
11,095.0	88.13	272.04	7,012.7	-1,003.2	-2,715.1	2,799.1	8.74	-8.70	-0.88
11,110.0	87.49	271.92	7,013.2	-1,002.7	-2,730.1	2,814.0	4.34	-4.27	-0.80
11,125.0	87.39	271.82	7,013.9	-1,002.2	-2,745.1	2,828.8	0.94	-0.67	-0.67
11,140.0	87.28	271.71	7,014.6	-1,001.7	-2,760.1	2,843.7	1.04	-0.73	-0.73
11,155.0	87.17	271.61	7,015.3	-1,001.3	-2,775.1	2,858.5	0.99	-0.73	-0.67
11,170.0	87.06	271.51	7,016.1	-1,000.9	-2,790.0	2,873.4	0.99	-0.73	-0.67
11,185.0	86.98	271.44	7,016.9	-1,000.5	-2,805.0	2,888.3	0.71	-0.53	-0.47
11,199.8	86.93	271.41	7,017.6	-1,000.1	-2,819.8	2,903.0	0.39	-0.34	-0.20
11,214.7	86.90	271.40	7,018.4	-999.8	-2,834.6	2,917.7	0.21	-0.20	-0.07
11,229.5	86.88	271.41	7,019.2	-999.4	-2,849.4	2,932.4	0.15	-0.13	0.07
11,244.3	86.84	271.42	7,020.1	-999.1	-2,864.2	2,947.1	0.28	-0.27	0.07
11,259.2	86.78	271.45	7,020.9	-998.7	-2,879.0	2,961.8	0.45	-0.40	0.20
11,274.0	87.76	271.62	7,021.6	-998.3	-2,893.9	2,976.5	6.71	6.61	1.15
11,289.0	88.24	271.73	7,022.1	-997.8	-2,908.8	2,991.4	3.28	3.20	0.73
11,304.0	88.05	271.78	7,022.6	-997.4	-2,923.8	3,006.2	1.31	-1.27	0.33
11,319.0	87.83	271.83	7,023.1	-996.9	-2,938.8	3,021.1	1.50	-1.47	0.33
11,334.0	87.61	271.87	7,023.7	-996.4	-2,953.8	3,036.0	1.49	-1.47	0.27
11,349.0	87.39	271.92	7,024.4	-995.9	-2,968.8	3,050.8	1.50	-1.47	0.33
11,364.0	87.19	271.95	7,025.1	-995.4	-2,983.7	3,065.7	1.35	-1.33	0.20
11,378.8	87.03	271.98	7,025.8	-994.9	-2,998.5	3,080.4	1.10	-1.08	0.20
11,393.7	86.90	271.99	7,026.6	-994.4	-3,013.3	3,095.1	0.88	-0.88	0.07
11,408.5	86.77	271.99	7,027.5	-993.9	-3,028.1	3,109.7	0.88	-0.88	0.00
11,423.3	86.65	271.98	7,028.3	-993.4	-3,042.9	3,124.4	0.81	-0.81	-0.07
11,438.2	86.52	271.97	7,029.2	-992.9	-3,057.7	3,139.1	0.88	-0.88	-0.07
11,453.0	88.69	272.35	7,029.8	-992.3	-3,072.6	3,153.8	14.85	14.63	2.56
11,468.0	89.16	272.51	7,030.1	-991.7	-3,087.5	3,168.6	3.31	3.13	1.07
11,483.0	88.99	272.46	7,030.3	-991.0	-3,102.5	3,183.5	1.18	-1.13	-0.33
11,498.0	88.80	272.41	7,030.6	-990.4	-3,117.5	3,198.4	1.31	-1.27	-0.33
11,513.0	88.60	272.35	7,031.0	-989.8	-3,132.5	3,213.2	1.39	-1.33	-0.40
11,528.0	88.39	272.29	7,031.4	-989.2	-3,147.5	3,228.1	1.46	-1.40	-0.40
11,543.0	88.15	272.24	7,031.8	-988.6	-3,162.5	3,242.9	1.63	-1.60	-0.33
11,558.0	87.88	272.18	7,032.3	-988.0	-3,177.4	3,257.8	1.84	-1.80	-0.40
11,573.0	87.59	272.12	7,032.9	-987.4	-3,192.4	3,272.6	1.97	-1.93	-0.40
11,588.0	87.29	272.05	7,033.6	-986.9	-3,207.4	3,287.5	2.05	-2.00	-0.47
11,603.0	86.99	271.95	7,034.3	-986.4	-3,222.4	3,302.3	2.11	-2.00	-0.67
11,618.0	86.71	271.80	7,035.2	-985.9	-3,237.3	3,317.2	2.12	-1.87	-1.00
11,633.0	88.47	271.49	7,035.8	-985.4	-3,252.3	3,332.0	11.91	11.73	-2.07
11,647.8	89.08	271.18	7,036.1	-985.1	-3,267.1	3,346.8	4.61	4.11	-2.09

Ensign Energy Services Inc.

Survey Report

Company:	Bayswater Exploration & Production, LLC	Local Co-ordinate Reference:	Well Groves Farm R-34-33HN
Project:	SEC.34-T7N-R65W	TVD Reference:	WELL @ 4867.0ft (Original Well Elev)
Site:	Groves Farm 34-L Pad Sec.34-T7N-R65W	MD Reference:	WELL @ 4867.0ft (Original Well Elev)
Well:	Groves Farm R-34-33HN	North Reference:	True
Wellbore:	Groves Farms R-34-33HN Wellbore #1	Survey Calculation Method:	Minimum Curvature
Design:	Groves Farms R-34-33HN Wellbore #1	Database:	US_EDM

Survey										
Measured Depth (ft)	Inclination (°)	Azimuth (°)	Vertical Depth (ft)	+N/-S (ft)	+E/-W (ft)	Vertical Section (ft)	Dogleg Rate (°/100usft)	Build Rate (°/100usft)	Turn Rate (°/100usft)	
11,662.7	88.83	270.76	7,036.4	-984.8	-3,282.0	3,361.5	3.29	-1.68	-2.83	
11,677.5	88.59	270.30	7,036.7	-984.7	-3,296.8	3,376.3	3.50	-1.62	-3.10	
11,692.3	88.36	269.86	7,037.1	-984.7	-3,311.6	3,391.0	3.35	-1.55	-2.97	
11,707.2	88.16	269.47	7,037.6	-984.8	-3,326.4	3,405.8	2.95	-1.35	-2.63	
11,722.0	89.86	269.71	7,037.8	-984.9	-3,341.3	3,420.6	11.58	11.46	1.62	
11,737.0	89.75	269.54	7,037.9	-985.0	-3,356.3	3,435.5	1.35	-0.73	-1.13	
11,752.0	89.65	269.43	7,037.9	-985.1	-3,371.3	3,450.4	0.99	-0.67	-0.73	
11,767.0	89.57	269.37	7,038.0	-985.3	-3,386.3	3,465.4	0.67	-0.53	-0.40	
11,782.0	89.48	269.33	7,038.2	-985.4	-3,401.3	3,480.3	0.66	-0.60	-0.27	
11,797.0	89.39	269.30	7,038.3	-985.6	-3,416.3	3,495.3	0.63	-0.60	-0.20	
11,812.0	90.19	270.04	7,038.4	-985.7	-3,431.3	3,510.2	7.27	5.33	4.93	
11,827.0	90.23	270.19	7,038.3	-985.7	-3,446.3	3,525.1	1.03	0.27	1.00	
11,842.0	90.03	270.17	7,038.3	-985.6	-3,461.3	3,540.1	1.34	-1.33	-0.13	
11,857.0	89.84	270.16	7,038.3	-985.6	-3,476.3	3,555.0	1.27	-1.27	-0.07	
11,872.0	89.67	270.17	7,038.4	-985.5	-3,491.3	3,569.9	1.14	-1.13	0.07	
11,887.0	89.56	270.20	7,038.5	-985.5	-3,506.3	3,584.8	0.76	-0.73	0.20	
11,902.0	89.54	270.26	7,038.6	-985.4	-3,521.3	3,599.8	0.42	-0.13	0.40	
11,916.8	89.69	270.38	7,038.7	-985.3	-3,536.1	3,614.5	1.30	1.01	0.81	
11,931.7	89.91	270.52	7,038.7	-985.2	-3,550.9	3,629.3	1.76	1.48	0.94	
11,946.5	90.16	270.68	7,038.7	-985.1	-3,565.8	3,644.0	2.00	1.69	1.08	
11,961.3	90.39	270.82	7,038.7	-984.9	-3,580.6	3,658.8	1.82	1.55	0.94	
11,976.2	90.56	270.94	7,038.5	-984.7	-3,595.4	3,673.5	1.40	1.15	0.81	
11,991.0	91.88	271.42	7,038.2	-984.4	-3,610.3	3,688.2	9.47	8.90	3.24	
12,006.0	92.58	271.73	7,037.6	-983.9	-3,625.2	3,703.1	5.10	4.67	2.07	
12,021.0	92.34	271.70	7,037.0	-983.5	-3,640.2	3,718.0	1.61	-1.60	-0.20	
12,036.0	92.04	271.63	7,036.4	-983.1	-3,655.2	3,732.8	2.05	-2.00	-0.47	
12,051.0	91.73	271.55	7,035.9	-982.6	-3,670.2	3,747.7	2.13	-2.07	-0.53	
12,066.0	91.46	271.46	7,035.5	-982.2	-3,685.2	3,762.6	1.90	-1.80	-0.60	
12,081.0	89.91	271.14	7,035.3	-981.9	-3,700.2	3,777.5	10.55	-10.33	-2.13	
12,096.0	89.11	270.92	7,035.5	-981.6	-3,715.2	3,792.4	5.53	-5.33	-1.47	
12,111.0	89.08	270.77	7,035.7	-981.4	-3,730.2	3,807.3	1.02	-0.20	-1.00	
12,126.0	89.08	270.62	7,035.9	-981.2	-3,745.2	3,822.2	1.00	0.00	-1.00	
12,141.0	89.08	270.47	7,036.2	-981.1	-3,760.2	3,837.1	1.00	0.00	-1.00	
12,156.0	89.08	270.33	7,036.4	-981.0	-3,775.2	3,852.0	0.93	0.00	-0.93	
12,171.0	89.05	270.20	7,036.7	-980.9	-3,790.2	3,867.0	0.89	-0.20	-0.87	
12,185.7	88.95	270.11	7,036.9	-980.9	-3,804.8	3,881.6	0.92	-0.68	-0.61	
12,200.3	88.82	270.04	7,037.2	-980.9	-3,819.5	3,896.1	1.01	-0.89	-0.48	
12,215.0	88.68	269.99	7,037.5	-980.9	-3,834.1	3,910.7	1.01	-0.95	-0.34	
12,229.7	88.55	269.96	7,037.9	-980.9	-3,848.8	3,925.3	0.91	-0.89	-0.20	
12,244.3	88.43	269.97	7,038.3	-980.9	-3,863.5	3,939.9	0.82	-0.82	0.07	
12,259.0	88.37	270.01	7,038.7	-980.9	-3,878.1	3,954.5	0.49	-0.41	0.27	
12,274.0	88.38	270.13	7,039.1	-980.9	-3,893.1	3,969.4	0.80	0.07	0.80	
12,289.0	88.44	270.28	7,039.5	-980.8	-3,908.1	3,984.4	1.08	0.40	1.00	

Ensign Energy Services Inc.

Survey Report

Company:	Bayswater Exploration & Production, LLC	Local Co-ordinate Reference:	Well Groves Farm R-34-33HN
Project:	SEC.34-T7N-R65W	TVD Reference:	WELL @ 4867.0ft (Original Well Elev)
Site:	Groves Farm 34-L Pad Sec.34-T7N-R65W	MD Reference:	WELL @ 4867.0ft (Original Well Elev)
Well:	Groves Farm R-34-33HN	North Reference:	True
Wellbore:	Groves Farms R-34-33HN Wellbore #1	Survey Calculation Method:	Minimum Curvature
Design:	Groves Farms R-34-33HN Wellbore #1	Database:	US_EDM

Survey									
Measured Depth (ft)	Inclination (°)	Azimuth (°)	Vertical Depth (ft)	+N/-S (ft)	+E/-W (ft)	Vertical Section (ft)	Dogleg Rate (°/100usft)	Build Rate (°/100usft)	Turn Rate (°/100usft)
12,304.0	88.53	270.44	7,039.9	-980.7	-3,923.1	3,999.3	1.22	0.60	1.07
12,319.0	88.62	270.58	7,040.3	-980.6	-3,938.1	4,014.2	1.11	0.60	0.93
12,334.0	88.69	270.67	7,040.6	-980.4	-3,953.1	4,029.1	0.76	0.47	0.60
12,349.0	89.30	272.00	7,040.9	-980.1	-3,968.1	4,044.0	9.75	4.07	8.87
12,363.8	89.83	273.29	7,041.0	-979.4	-3,982.9	4,058.7	9.40	3.57	8.70
12,378.7	89.81	273.13	7,041.1	-978.5	-3,997.7	4,073.3	1.09	-0.13	-1.08
12,393.5	89.79	272.92	7,041.1	-977.8	-4,012.5	4,088.0	1.42	-0.13	-1.42
12,408.3	89.76	272.69	7,041.2	-977.0	-4,027.3	4,102.7	1.56	-0.20	-1.55
12,423.2	89.74	272.47	7,041.2	-976.4	-4,042.2	4,117.4	1.49	-0.13	-1.48
12,438.0	90.83	272.87	7,041.2	-975.7	-4,057.0	4,132.1	7.83	7.35	2.70
12,453.0	90.98	272.77	7,040.9	-974.9	-4,072.0	4,146.9	1.20	1.00	-0.67
12,468.0	91.03	272.63	7,040.7	-974.2	-4,086.9	4,161.7	0.99	0.33	-0.93
12,483.0	91.08	272.50	7,040.4	-973.6	-4,101.9	4,176.6	0.93	0.33	-0.87
12,498.0	91.13	272.39	7,040.1	-972.9	-4,116.9	4,191.4	0.81	0.33	-0.73
12,513.0	91.15	272.29	7,039.8	-972.3	-4,131.9	4,206.3	0.68	0.13	-0.67
12,528.0	91.14	272.21	7,039.5	-971.7	-4,146.9	4,221.2	0.54	-0.07	-0.53
12,543.0	91.05	272.15	7,039.2	-971.1	-4,161.9	4,236.0	0.72	-0.60	-0.40
12,558.0	90.93	272.10	7,038.9	-970.6	-4,176.9	4,250.9	0.87	-0.80	-0.33
12,573.0	90.78	272.07	7,038.7	-970.0	-4,191.8	4,265.7	1.02	-1.00	-0.20
12,588.0	90.62	272.04	7,038.5	-969.5	-4,206.8	4,280.6	1.09	-1.07	-0.20
12,603.0	90.46	272.02	7,038.4	-969.0	-4,221.8	4,295.5	1.07	-1.07	-0.13
12,618.0	90.30	272.00	7,038.3	-968.5	-4,236.8	4,310.4	1.07	-1.07	-0.13
12,632.8	90.17	271.98	7,038.2	-967.9	-4,251.6	4,325.1	0.89	-0.88	-0.13
12,647.7	90.05	271.96	7,038.2	-967.4	-4,266.5	4,339.8	0.82	-0.81	-0.13
12,662.5	89.94	271.94	7,038.2	-966.9	-4,281.3	4,354.5	0.75	-0.74	-0.13
12,677.3	89.83	271.93	7,038.2	-966.4	-4,296.1	4,369.2	0.74	-0.74	-0.07
12,692.2	89.73	271.91	7,038.3	-965.9	-4,310.9	4,383.9	0.69	-0.67	-0.13
12,707.0	89.63	271.89	7,038.4	-965.4	-4,325.8	4,398.6	0.69	-0.67	-0.13
12,722.0	89.52	271.86	7,038.5	-964.9	-4,340.8	4,413.5	0.76	-0.73	-0.20
12,737.0	89.42	271.84	7,038.6	-964.5	-4,355.7	4,428.3	0.68	-0.67	-0.13
12,752.0	89.31	271.82	7,038.8	-964.0	-4,370.7	4,443.2	0.75	-0.73	-0.13
12,767.0	89.20	271.80	7,039.0	-963.5	-4,385.7	4,458.1	0.75	-0.73	-0.13
12,782.0	89.08	271.78	7,039.2	-963.0	-4,400.7	4,473.0	0.81	-0.80	-0.13
12,797.0	88.94	271.78	7,039.5	-962.6	-4,415.7	4,487.8	0.93	-0.93	0.00
12,811.8	88.77	271.80	7,039.8	-962.1	-4,430.5	4,502.6	1.15	-1.15	0.13
12,826.7	88.60	271.83	7,040.1	-961.6	-4,445.4	4,517.3	1.16	-1.15	0.20
12,841.5	88.44	271.86	7,040.5	-961.2	-4,460.2	4,532.0	1.10	-1.08	0.20
12,856.3	88.31	271.90	7,040.9	-960.7	-4,475.0	4,546.7	0.92	-0.88	0.27
12,871.2	88.25	271.94	7,041.4	-960.2	-4,489.8	4,561.4	0.49	-0.40	0.27
12,886.0	88.29	271.98	7,041.8	-959.7	-4,504.6	4,576.1	0.38	0.27	0.27
12,901.0	88.50	272.02	7,042.2	-959.1	-4,519.6	4,590.9	1.43	1.40	0.27
12,916.0	88.81	272.06	7,042.6	-958.6	-4,534.6	4,605.8	2.08	2.07	0.27
12,931.0	89.17	272.09	7,042.8	-958.1	-4,549.6	4,620.7	2.41	2.40	0.20
12,946.0	89.55	272.12	7,043.0	-957.5	-4,564.6	4,635.5	2.54	2.53	0.20

Ensign Energy Services Inc.

Survey Report

Company:	Bayswater Exploration & Production, LLC	Local Co-ordinate Reference:	Well Groves Farm R-34-33HN
Project:	SEC.34-T7N-R65W	TVD Reference:	WELL @ 4867.0ft (Original Well Elev)
Site:	Groves Farm 34-L Pad Sec.34-T7N-R65W	MD Reference:	WELL @ 4867.0ft (Original Well Elev)
Well:	Groves Farm R-34-33HN	North Reference:	True
Wellbore:	Groves Farms R-34-33HN Wellbore #1	Survey Calculation Method:	Minimum Curvature
Design:	Groves Farms R-34-33HN Wellbore #1	Database:	US_EDM

Survey

Measured Depth (ft)	Inclination (°)	Azimuth (°)	Vertical Depth (ft)	+N/-S (ft)	+E/-W (ft)	Vertical Section (ft)	Dogleg Rate (°/100usft)	Build Rate (°/100usft)	Turn Rate (°/100usft)
12,961.0	89.91	272.15	7,043.1	-957.0	-4,579.6	4,650.4	2.41	2.40	0.20
12,976.0	90.21	272.16	7,043.1	-956.4	-4,594.6	4,665.3	2.00	2.00	0.07
12,990.8	90.45	272.18	7,043.0	-955.8	-4,609.4	4,680.0	1.62	1.62	0.13
13,005.7	90.57	272.16	7,042.9	-955.3	-4,624.2	4,694.7	0.82	0.81	-0.13
13,020.5	90.64	272.15	7,042.7	-954.7	-4,639.0	4,709.4	0.48	0.47	-0.07
13,035.3	90.70	272.13	7,042.5	-954.2	-4,653.8	4,724.1	0.43	0.40	-0.13
13,050.2	90.75	272.11	7,042.3	-953.6	-4,668.7	4,738.8	0.36	0.34	-0.13
13,065.0	90.81	272.11	7,042.1	-953.1	-4,683.5	4,753.5	0.40	0.40	0.00
13,079.8	90.90	272.11	7,041.9	-952.5	-4,698.3	4,768.2	0.61	0.61	0.00
13,094.7	91.00	272.13	7,041.7	-952.0	-4,713.1	4,782.9	0.69	0.67	0.13
13,109.5	91.11	272.15	7,041.4	-951.4	-4,728.0	4,797.6	0.75	0.74	0.13
13,124.3	91.23	272.19	7,041.1	-950.9	-4,742.8	4,812.3	0.85	0.81	0.27
13,139.2	91.36	272.24	7,040.8	-950.3	-4,757.6	4,827.0	0.94	0.88	0.34
13,154.0	91.50	272.31	7,040.4	-949.7	-4,772.4	4,841.7	1.06	0.94	0.47
13,169.0	91.65	272.40	7,040.0	-949.1	-4,787.4	4,856.5	1.17	1.00	0.60
13,184.0	91.81	272.52	7,039.5	-948.4	-4,802.4	4,871.4	1.33	1.07	0.80
13,199.0	91.97	272.63	7,039.0	-947.8	-4,817.3	4,886.2	1.29	1.07	0.73
13,214.0	92.11	272.73	7,038.5	-947.1	-4,832.3	4,901.0	1.15	0.93	0.67
13,229.0	92.23	272.81	7,037.9	-946.3	-4,847.3	4,915.9	0.96	0.80	0.53
13,244.0	92.32	272.86	7,037.3	-945.6	-4,862.3	4,930.7	0.69	0.60	0.33
13,258.8	92.34	272.84	7,036.7	-944.9	-4,877.1	4,945.4	0.19	0.13	-0.13
13,273.7	92.32	272.78	7,036.1	-944.1	-4,891.9	4,960.0	0.43	-0.13	-0.40
13,288.5	92.29	272.71	7,035.5	-943.4	-4,906.7	4,974.7	0.51	-0.20	-0.47
13,303.3	92.26	272.64	7,034.9	-942.7	-4,921.5	4,989.4	0.51	-0.20	-0.47
13,318.2	92.04	272.43	7,034.4	-942.1	-4,936.3	5,004.0	2.05	-1.48	-1.42
13,333.0	90.53	271.16	7,034.0	-941.6	-4,951.1	5,018.7	13.30	-10.18	-8.56
13,347.8	90.12	270.36	7,034.0	-941.4	-4,965.9	5,033.5	6.06	-2.76	-5.39
13,362.7	90.18	270.39	7,033.9	-941.3	-4,980.8	5,048.2	0.45	0.40	0.20
13,377.5	90.24	270.42	7,033.9	-941.2	-4,995.6	5,063.0	0.45	0.40	0.20
13,392.3	90.30	270.46	7,033.8	-941.1	-5,010.4	5,077.7	0.49	0.40	0.27
13,407.2	90.35	270.49	7,033.7	-941.0	-5,025.3	5,092.5	0.39	0.34	0.20
13,422.0	89.86	269.55	7,033.7	-941.0	-5,040.1	5,107.3	7.15	-3.30	-6.34
13,436.8	89.88	269.54	7,033.7	-941.1	-5,054.9	5,122.0	0.15	0.13	-0.07
13,451.7	89.88	269.52	7,033.8	-941.2	-5,069.8	5,136.8	0.13	0.00	-0.13
13,466.5	89.88	269.49	7,033.8	-941.3	-5,084.6	5,151.6	0.20	0.00	-0.20
13,481.3	89.88	269.46	7,033.8	-941.5	-5,099.4	5,166.4	0.20	0.00	-0.20
13,496.2	89.87	269.41	7,033.8	-941.6	-5,114.3	5,181.2	0.34	-0.07	-0.34
13,511.0	89.85	269.37	7,033.9	-941.8	-5,129.1	5,195.9	0.30	-0.13	-0.27
13,526.0	89.83	269.31	7,033.9	-941.9	-5,144.1	5,210.9	0.42	-0.13	-0.40
13,541.0	89.82	269.25	7,034.0	-942.1	-5,159.1	5,225.8	0.41	-0.07	-0.40
13,556.0	89.81	269.20	7,034.0	-942.3	-5,174.1	5,240.8	0.34	-0.07	-0.33
13,571.0	89.82	269.16	7,034.1	-942.6	-5,189.1	5,255.7	0.27	0.07	-0.27
13,586.0	89.86	269.14	7,034.1	-942.8	-5,204.1	5,270.7	0.30	0.27	-0.13

Ensign Energy Services Inc.

Survey Report

Company:	Bayswater Exploration & Production, LLC	Local Co-ordinate Reference:	Well Groves Farm R-34-33HN
Project:	SEC.34-T7N-R65W	TVD Reference:	WELL @ 4867.0ft (Original Well Elev)
Site:	Groves Farm 34-L Pad Sec.34-T7N-R65W	MD Reference:	WELL @ 4867.0ft (Original Well Elev)
Well:	Groves Farm R-34-33HN	North Reference:	True
Wellbore:	Groves Farms R-34-33HN Wellbore #1	Survey Calculation Method:	Minimum Curvature
Design:	Groves Farms R-34-33HN Wellbore #1	Database:	US_EDM

Survey									
Measured Depth (ft)	Inclination (°)	Azimuth (°)	Vertical Depth (ft)	+N/-S (ft)	+E/-W (ft)	Vertical Section (ft)	Dogleg Rate (°/100usft)	Build Rate (°/100usft)	Turn Rate (°/100usft)
13,601.0	89.94	269.17	7,034.1	-943.0	-5,219.1	5,285.6	0.57	0.53	0.20
13,616.0	90.11	269.26	7,034.1	-943.2	-5,234.1	5,300.6	1.28	1.13	0.60
13,631.0	90.32	269.39	7,034.1	-943.4	-5,249.1	5,315.5	1.65	1.40	0.87
13,646.0	90.54	269.53	7,034.0	-943.5	-5,264.1	5,330.5	1.74	1.47	0.93
13,661.0	90.75	269.69	7,033.8	-943.6	-5,279.1	5,345.4	1.76	1.40	1.07
13,676.0	90.93	269.84	7,033.6	-943.7	-5,294.1	5,360.3	1.56	1.20	1.00
13,691.0	90.02	270.41	7,033.4	-943.7	-5,309.1	5,375.3	7.16	-6.07	3.80
13,705.8	88.78	270.79	7,033.6	-943.5	-5,323.9	5,390.0	8.75	-8.36	2.56
13,720.7	88.78	270.90	7,033.9	-943.3	-5,338.7	5,404.7	0.74	0.00	0.74
13,735.5	88.75	271.01	7,034.2	-943.0	-5,353.6	5,419.5	0.77	-0.20	0.74
13,750.3	88.71	271.12	7,034.6	-942.8	-5,368.4	5,434.2	0.79	-0.27	0.74
13,765.2	87.98	271.18	7,035.0	-942.5	-5,383.2	5,448.9	4.94	-4.92	0.40
13,780.0	87.26	271.22	7,035.6	-942.1	-5,398.0	5,463.7	4.86	-4.86	0.27
13,794.8	87.26	271.30	7,036.3	-941.8	-5,412.8	5,478.4	0.54	0.00	0.54
13,809.7	87.28	271.36	7,037.0	-941.5	-5,427.7	5,493.1	0.43	0.13	0.40
13,824.5	87.31	271.42	7,037.7	-941.1	-5,442.5	5,507.8	0.45	0.20	0.40
13,839.3	87.33	271.47	7,038.4	-940.7	-5,457.3	5,522.5	0.36	0.13	0.34
13,854.2	87.34	271.52	7,039.1	-940.4	-5,472.1	5,537.2	0.34	0.07	0.34
13,869.0	87.34	271.56	7,039.8	-940.0	-5,486.9	5,551.9	0.27	0.00	0.27
13,884.0	87.31	271.60	7,040.5	-939.5	-5,501.9	5,566.8	0.33	-0.20	0.27
13,899.0	87.26	271.63	7,041.2	-939.1	-5,516.9	5,581.6	0.39	-0.33	0.20
13,914.0	87.20	271.66	7,041.9	-938.7	-5,531.8	5,596.5	0.45	-0.40	0.20
13,929.0	87.11	271.67	7,042.7	-938.3	-5,546.8	5,611.4	0.60	-0.60	0.07
13,944.0	87.00	271.67	7,043.4	-937.8	-5,561.8	5,626.2	0.73	-0.73	0.00
13,959.0	88.09	271.52	7,044.1	-937.4	-5,576.8	5,641.1	7.34	7.27	-1.00
13,973.8	88.41	271.35	7,044.5	-937.0	-5,591.6	5,655.8	2.44	2.16	-1.15
13,988.7	88.17	271.29	7,045.0	-936.7	-5,606.4	5,670.5	1.67	-1.62	-0.40
14,003.5	87.91	271.22	7,045.5	-936.4	-5,621.2	5,685.3	1.82	-1.75	-0.47
14,018.3	87.64	271.14	7,046.1	-936.1	-5,636.1	5,700.0	1.90	-1.82	-0.54
14,033.2	87.39	271.06	7,046.7	-935.8	-5,650.9	5,714.7	1.77	-1.68	-0.54
14,048.0	87.17	270.96	7,047.4	-935.5	-5,665.7	5,729.4	1.63	-1.48	-0.67
14,063.0	87.02	270.85	7,048.2	-935.3	-5,680.7	5,744.3	1.24	-1.00	-0.73
14,078.0	86.91	270.74	7,049.0	-935.1	-5,695.6	5,759.2	1.04	-0.73	-0.73
14,093.0	86.82	270.63	7,049.8	-934.9	-5,710.6	5,774.1	0.95	-0.60	-0.73
14,108.0	86.75	270.54	7,050.6	-934.7	-5,725.6	5,789.0	0.76	-0.47	-0.60
14,123.0	86.67	270.47	7,051.5	-934.6	-5,740.6	5,803.9	0.71	-0.53	-0.47
14,138.0	88.39	269.86	7,052.1	-934.6	-5,755.6	5,818.8	12.17	11.47	-4.07
14,152.8	89.23	269.55	7,052.4	-934.6	-5,770.4	5,833.5	6.04	5.66	-2.09
14,167.7	89.13	269.62	7,052.7	-934.7	-5,785.2	5,848.3	0.82	-0.67	0.47
14,182.5	89.02	269.71	7,052.9	-934.8	-5,800.0	5,863.1	0.96	-0.74	0.61
14,197.3	88.90	269.79	7,053.2	-934.9	-5,814.9	5,877.9	0.97	-0.81	0.54
14,212.2	88.79	269.86	7,053.5	-934.9	-5,829.7	5,892.6	0.88	-0.74	0.47
14,227.0	90.02	270.26	7,053.6	-934.9	-5,844.5	5,907.4	8.72	8.29	2.70

Ensign Energy Services Inc.

Survey Report

Company:	Bayswater Exploration & Production, LLC	Local Co-ordinate Reference:	Well Groves Farm R-34-33HN
Project:	SEC.34-T7N-R65W	TVD Reference:	WELL @ 4867.0ft (Original Well Elev)
Site:	Groves Farm 34-L Pad Sec.34-T7N-R65W	MD Reference:	WELL @ 4867.0ft (Original Well Elev)
Well:	Groves Farm R-34-33HN	North Reference:	True
Wellbore:	Groves Farms R-34-33HN Wellbore #1	Survey Calculation Method:	Minimum Curvature
Design:	Groves Farms R-34-33HN Wellbore #1	Database:	US_EDM

Survey

Measured Depth (ft)	Inclination (°)	Azimuth (°)	Vertical Depth (ft)	+N/-S (ft)	+E/-W (ft)	Vertical Section (ft)	Dogleg Rate (°/100usft)	Build Rate (°/100usft)	Turn Rate (°/100usft)
14,242.0	90.90	270.44	7,053.5	-934.8	-5,859.5	5,922.3	5.99	5.87	1.20
14,257.0	90.75	270.38	7,053.3	-934.7	-5,874.5	5,937.2	1.08	-1.00	-0.40
14,272.0	90.59	270.29	7,053.1	-934.6	-5,889.5	5,952.2	1.22	-1.07	-0.60
14,287.0	90.46	270.17	7,053.0	-934.6	-5,904.5	5,967.1	1.18	-0.87	-0.80
14,302.0	90.34	270.02	7,052.9	-934.6	-5,919.5	5,982.0	1.28	-0.80	-1.00
14,317.0	90.91	269.05	7,052.7	-934.7	-5,934.5	5,996.9	7.50	3.80	-6.47
14,331.8	91.02	268.64	7,052.5	-935.0	-5,949.4	6,011.7	2.86	0.74	-2.76
14,346.7	91.06	268.32	7,052.2	-935.4	-5,964.2	6,026.5	2.17	0.27	-2.16
14,361.5	91.12	267.98	7,051.9	-935.9	-5,979.0	6,041.3	2.33	0.40	-2.29
14,376.3	91.21	267.65	7,051.6	-936.4	-5,993.8	6,056.1	2.31	0.61	-2.23
14,391.2	91.31	267.36	7,051.3	-937.1	-6,008.7	6,070.9	2.07	0.67	-1.95
14,406.0	91.42	267.15	7,050.9	-937.8	-6,023.5	6,085.8	1.60	0.74	-1.42
14,420.8	91.54	267.07	7,050.5	-938.5	-6,038.3	6,100.6	0.97	0.81	-0.54
14,435.7	91.67	267.08	7,050.1	-939.3	-6,053.1	6,115.4	0.88	0.88	0.07
14,450.5	91.79	267.12	7,049.7	-940.0	-6,067.9	6,130.2	0.85	0.81	0.27
14,465.3	91.89	267.18	7,049.2	-940.8	-6,082.7	6,145.0	0.79	0.67	0.40
14,480.2	91.95	267.23	7,048.7	-941.5	-6,097.5	6,159.8	0.53	0.40	0.34
14,495.0	91.35	268.45	7,048.3	-942.0	-6,112.3	6,174.6	9.16	-4.05	8.23
14,509.8	91.05	268.90	7,048.0	-942.4	-6,127.1	6,189.4	3.65	-2.02	3.03
14,524.7	90.93	268.82	7,047.7	-942.7	-6,142.0	6,204.2	0.97	-0.81	-0.54
14,539.5	90.79	268.72	7,047.5	-943.0	-6,156.8	6,219.0	1.16	-0.94	-0.67
14,554.3	90.63	268.61	7,047.3	-943.3	-6,171.6	6,233.8	1.31	-1.08	-0.74
14,569.2	90.47	268.50	7,047.2	-943.7	-6,186.5	6,248.6	1.31	-1.08	-0.74
14,584.0	90.17	269.36	7,047.1	-944.0	-6,201.3	6,263.4	6.14	-2.02	5.80
14,599.0	89.96	269.62	7,047.1	-944.1	-6,216.3	6,278.3	2.23	-1.40	1.73
14,614.0	89.80	269.51	7,047.1	-944.2	-6,231.3	6,293.2	1.29	-1.07	-0.73
14,629.0	89.65	269.40	7,047.2	-944.4	-6,246.3	6,308.2	1.24	-1.00	-0.73
14,644.0	89.50	269.31	7,047.3	-944.6	-6,261.3	6,323.1	1.17	-1.00	-0.60
14,659.0	89.39	269.22	7,047.4	-944.8	-6,276.3	6,338.1	0.95	-0.73	-0.60
14,674.0	89.32	269.17	7,047.6	-945.0	-6,291.3	6,353.0	0.57	-0.47	-0.33
14,688.8	89.31	269.16	7,047.8	-945.2	-6,306.1	6,367.8	0.10	-0.07	-0.07
14,703.7	89.35	269.17	7,047.9	-945.4	-6,320.9	6,382.6	0.28	0.27	0.07
14,718.5	89.41	269.19	7,048.1	-945.6	-6,335.8	6,397.4	0.43	0.40	0.13
14,733.3	89.47	269.21	7,048.2	-945.8	-6,350.6	6,412.1	0.43	0.40	0.13
14,748.2	89.52	269.23	7,048.4	-946.0	-6,365.4	6,426.9	0.36	0.34	0.13
14,763.0	90.82	269.74	7,048.3	-946.1	-6,380.3	6,441.7	9.42	8.77	3.44
14,778.0	91.29	269.91	7,048.1	-946.2	-6,395.3	6,456.6	3.33	3.13	1.13
14,793.0	91.26	269.89	7,047.7	-946.2	-6,410.3	6,471.6	0.24	-0.20	-0.13
14,808.0	91.21	269.86	7,047.4	-946.3	-6,425.3	6,486.5	0.39	-0.33	-0.20
14,823.0	91.17	269.82	7,047.1	-946.3	-6,440.3	6,501.4	0.38	-0.27	-0.27
14,838.0	91.12	269.77	7,046.8	-946.3	-6,455.2	6,516.4	0.47	-0.33	-0.33
14,853.0	91.10	269.71	7,046.5	-946.4	-6,470.2	6,531.3	0.42	-0.13	-0.40
14,867.8	91.09	269.63	7,046.2	-946.5	-6,485.1	6,546.1	0.54	-0.07	-0.54
14,882.7	91.10	269.54	7,045.9	-946.6	-6,499.9	6,560.8	0.61	0.07	-0.61

Ensign Energy Services Inc.

Survey Report

Company:	Bayswater Exploration & Production, LLC	Local Co-ordinate Reference:	Well Groves Farm R-34-33HN
Project:	SEC.34-T7N-R65W	TVD Reference:	WELL @ 4867.0ft (Original Well Elev)
Site:	Groves Farm 34-L Pad Sec.34-T7N-R65W	MD Reference:	WELL @ 4867.0ft (Original Well Elev)
Well:	Groves Farm R-34-33HN	North Reference:	True
Wellbore:	Groves Farms R-34-33HN Wellbore #1	Survey Calculation Method:	Minimum Curvature
Design:	Groves Farms R-34-33HN Wellbore #1	Database:	US_EDM

Survey

Measured Depth (ft)	Inclination (°)	Azimuth (°)	Vertical Depth (ft)	+N/-S (ft)	+E/-W (ft)	Vertical Section (ft)	Dogleg Rate (°/100usft)	Build Rate (°/100usft)	Turn Rate (°/100usft)
14,897.5	91.11	269.44	7,045.6	-946.7	-6,514.7	6,575.6	0.68	0.07	-0.67
14,912.3	91.11	269.34	7,045.4	-946.9	-6,529.6	6,590.4	0.67	0.00	-0.67
14,927.2	91.10	269.24	7,045.1	-947.1	-6,544.4	6,605.2	0.68	-0.07	-0.67
14,942.0	91.05	269.14	7,044.8	-947.3	-6,559.2	6,619.9	0.75	-0.34	-0.67
14,957.0	90.95	269.06	7,044.5	-947.5	-6,574.2	6,634.9	0.85	-0.67	-0.53
14,972.0	90.82	268.98	7,044.3	-947.8	-6,589.2	6,649.8	1.02	-0.87	-0.53
14,987.0	90.68	268.91	7,044.1	-948.1	-6,604.2	6,664.8	1.04	-0.93	-0.47
15,002.0	90.52	268.84	7,043.9	-948.4	-6,619.2	6,679.8	1.16	-1.07	-0.47
15,017.0	90.37	268.78	7,043.8	-948.7	-6,634.2	6,694.7	1.08	-1.00	-0.40
15,032.0	89.43	269.84	7,043.9	-948.8	-6,649.2	6,709.7	9.44	-6.27	7.07
15,046.8	89.28	269.80	7,044.0	-948.9	-6,664.0	6,724.4	1.05	-1.01	-0.27
15,061.7	89.15	269.76	7,044.2	-949.0	-6,678.9	6,739.2	0.92	-0.88	-0.27
15,076.5	89.02	269.72	7,044.5	-949.0	-6,693.7	6,754.0	0.92	-0.88	-0.27
15,091.3	88.90	269.69	7,044.7	-949.1	-6,708.5	6,768.7	0.83	-0.81	-0.20
15,106.2	88.81	269.67	7,045.0	-949.2	-6,723.4	6,783.5	0.62	-0.61	-0.13
15,121.0	88.77	269.65	7,045.3	-949.3	-6,738.2	6,798.3	0.30	-0.27	-0.13
15,135.8	88.78	269.65	7,045.7	-949.4	-6,753.0	6,813.0	0.07	0.07	0.00
15,150.7	88.83	269.65	7,046.0	-949.4	-6,767.9	6,827.8	0.34	0.34	0.00
15,165.5	88.90	269.65	7,046.3	-949.5	-6,782.7	6,842.6	0.47	0.47	0.00
15,180.3	88.97	269.63	7,046.5	-949.6	-6,797.5	6,857.3	0.49	0.47	-0.13
15,195.2	89.01	269.59	7,046.8	-949.7	-6,812.3	6,872.1	0.38	0.27	-0.27
15,210.0	89.82	270.17	7,047.0	-949.8	-6,827.2	6,886.9	6.72	5.46	3.91
15,224.8	90.94	270.85	7,046.9	-949.6	-6,842.0	6,901.6	8.84	7.55	4.59
15,239.7	90.84	270.64	7,046.6	-949.4	-6,856.8	6,916.4	1.57	-0.67	-1.42
15,254.5	90.72	270.41	7,046.4	-949.3	-6,871.7	6,931.1	1.75	-0.81	-1.55
15,269.3	90.60	270.17	7,046.2	-949.2	-6,886.5	6,945.9	1.81	-0.81	-1.62
15,284.2	90.50	269.97	7,046.1	-949.2	-6,901.3	6,960.7	1.51	-0.67	-1.35
15,299.0	90.47	269.85	7,046.0	-949.2	-6,916.2	6,975.4	0.83	-0.20	-0.81
15,313.8	90.54	269.86	7,045.9	-949.3	-6,931.0	6,990.2	0.48	0.47	0.07
15,328.7	90.67	269.94	7,045.7	-949.3	-6,945.8	7,005.0	1.03	0.88	0.54
15,343.5	90.83	270.06	7,045.5	-949.3	-6,960.7	7,019.7	1.35	1.08	0.81
15,358.3	90.99	270.19	7,045.3	-949.3	-6,975.5	7,034.5	1.39	1.08	0.88
15,373.2	91.12	270.29	7,045.0	-949.2	-6,990.3	7,049.2	1.11	0.88	0.67
15,388.0	91.31	271.06	7,044.7	-949.0	-7,005.2	7,064.0	5.35	1.28	5.19
15,402.8	91.38	271.46	7,044.3	-948.7	-7,020.0	7,078.7	2.74	0.47	2.70
15,417.7	91.34	271.38	7,044.0	-948.3	-7,034.8	7,093.4	0.60	-0.27	-0.54
15,432.5	91.26	271.27	7,043.6	-948.0	-7,049.6	7,108.1	0.92	-0.54	-0.74
15,447.3	91.17	271.15	7,043.3	-947.7	-7,064.5	7,122.9	1.01	-0.61	-0.81
15,462.2	91.07	271.02	7,043.0	-947.4	-7,079.3	7,137.6	1.11	-0.67	-0.88
15,477.0	90.97	270.89	7,042.8	-947.1	-7,094.1	7,152.3	1.11	-0.67	-0.88
15,491.7	90.88	270.80	7,042.5	-946.9	-7,108.8	7,166.9	0.87	-0.61	-0.61
15,506.3	90.79	270.71	7,042.3	-946.7	-7,123.4	7,181.5	0.87	-0.61	-0.61
15,521.0	90.70	270.64	7,042.1	-946.6	-7,138.1	7,196.1	0.78	-0.61	-0.48

Ensign Energy Services Inc.

Survey Report

Company:	Bayswater Exploration & Production, LLC	Local Co-ordinate Reference:	Well Groves Farm R-34-33HN
Project:	SEC.34-T7N-R65W	TVD Reference:	WELL @ 4867.0ft (Original Well Elev)
Site:	Groves Farm 34-L Pad Sec.34-T7N-R65W	MD Reference:	WELL @ 4867.0ft (Original Well Elev)
Well:	Groves Farm R-34-33HN	North Reference:	True
Wellbore:	Groves Farms R-34-33HN Wellbore #1	Survey Calculation Method:	Minimum Curvature
Design:	Groves Farms R-34-33HN Wellbore #1	Database:	US_EDM

Survey										
Measured Depth (ft)	Inclination (°)	Azimuth (°)	Vertical Depth (ft)	+N/-S (ft)	+E/-W (ft)	Vertical Section (ft)	Dogleg Rate (°/100usft)	Build Rate (°/100usft)	Turn Rate (°/100usft)	
15,535.7	90.62	270.57	7,042.0	-946.4	-7,152.8	7,210.7	0.72	-0.55	-0.48	
15,550.3	90.54	270.50	7,041.8	-946.3	-7,167.4	7,225.2	0.73	-0.55	-0.48	
15,565.0	90.45	270.43	7,041.7	-946.2	-7,182.1	7,239.8	0.78	-0.61	-0.48	
15,580.0	90.36	270.37	7,041.6	-946.1	-7,197.1	7,254.7	0.72	-0.60	-0.40	
15,595.0	90.27	270.30	7,041.5	-946.0	-7,212.1	7,269.7	0.76	-0.60	-0.47	
15,610.0	90.17	270.24	7,041.4	-945.9	-7,227.1	7,284.6	0.78	-0.67	-0.40	
15,625.0	90.07	270.19	7,041.4	-945.8	-7,242.1	7,299.5	0.75	-0.67	-0.33	
15,640.0	89.97	270.15	7,041.4	-945.8	-7,257.1	7,314.4	0.72	-0.67	-0.27	
15,655.0	90.17	270.80	7,041.4	-945.7	-7,272.1	7,329.4	4.53	1.33	4.33	
15,670.0	90.26	271.24	7,041.3	-945.4	-7,287.1	7,344.3	2.99	0.60	2.93	
15,685.0	90.13	271.27	7,041.3	-945.1	-7,302.1	7,359.1	0.89	-0.87	0.20	
15,700.0	89.99	271.31	7,041.3	-944.7	-7,317.1	7,374.0	0.97	-0.93	0.27	
15,715.0	89.85	271.34	7,041.3	-944.4	-7,332.1	7,388.9	0.95	-0.93	0.20	
15,730.0	89.70	271.38	7,041.3	-944.0	-7,347.1	7,403.8	1.03	-1.00	0.27	
15,745.0	89.55	271.41	7,041.4	-943.7	-7,362.1	7,418.7	1.02	-1.00	0.20	
15,759.8	89.40	271.42	7,041.6	-943.3	-7,376.9	7,433.4	1.01	-1.01	0.07	
15,774.7	89.24	271.42	7,041.8	-942.9	-7,391.7	7,448.2	1.08	-1.08	0.00	
15,789.5	89.08	271.40	7,042.0	-942.6	-7,406.6	7,462.9	1.09	-1.08	-0.13	
15,804.3	88.92	271.37	7,042.2	-942.2	-7,421.4	7,477.6	1.10	-1.08	-0.20	
15,819.2	88.77	271.32	7,042.5	-941.9	-7,436.2	7,492.3	1.07	-1.01	-0.34	
15,834.0	90.02	270.87	7,042.7	-941.6	-7,451.0	7,507.1	8.96	8.43	-3.03	
15,848.8	89.87	270.77	7,042.7	-941.4	-7,465.9	7,521.8	1.22	-1.01	-0.67	
15,863.7	89.73	270.65	7,042.7	-941.2	-7,480.7	7,536.6	1.24	-0.94	-0.81	
15,878.5	89.60	270.52	7,042.8	-941.0	-7,495.5	7,551.3	1.24	-0.88	-0.88	
15,893.3	89.50	270.39	7,043.0	-940.9	-7,510.4	7,566.1	1.11	-0.67	-0.88	
15,908.2	89.42	270.26	7,043.1	-940.8	-7,525.2	7,580.8	1.03	-0.54	-0.88	
15,923.0	89.41	270.14	7,043.2	-940.8	-7,540.0	7,595.6	0.81	-0.07	-0.81	
15,938.0	89.49	270.04	7,043.4	-940.8	-7,555.0	7,610.5	0.85	0.53	-0.67	
15,953.0	89.62	269.95	7,043.5	-940.8	-7,570.0	7,625.4	1.05	0.87	-0.60	
15,968.0	89.77	269.87	7,043.6	-940.8	-7,585.0	7,640.4	1.13	1.00	-0.53	
15,983.0	89.93	269.79	7,043.6	-940.8	-7,600.0	7,655.3	1.19	1.07	-0.53	
15,998.0	90.06	269.70	7,043.6	-940.9	-7,615.0	7,670.2	1.05	0.87	-0.60	
16,013.0	90.15	269.61	7,043.6	-941.0	-7,630.0	7,685.2	0.85	0.60	-0.60	
16,027.8	90.11	269.56	7,043.6	-941.1	-7,644.9	7,699.9	0.43	-0.27	-0.34	
16,042.7	90.07	269.44	7,043.5	-941.2	-7,659.7	7,714.7	0.85	-0.27	-0.81	
16,057.5	89.99	269.32	7,043.5	-941.4	-7,674.5	7,729.5	0.97	-0.54	-0.81	
16,072.3	89.89	269.20	7,043.5	-941.6	-7,689.4	7,744.3	1.05	-0.67	-0.81	
16,087.2	89.79	269.08	7,043.6	-941.8	-7,704.2	7,759.1	1.05	-0.67	-0.81	
16,102.0	89.69	268.96	7,043.7	-942.0	-7,719.0	7,773.9	1.05	-0.67	-0.81	
16,117.0	89.59	268.84	7,043.8	-942.3	-7,734.0	7,788.8	1.04	-0.67	-0.80	
16,132.0	89.49	268.74	7,043.9	-942.6	-7,749.0	7,803.8	0.94	-0.67	-0.67	
16,147.0	89.40	268.63	7,044.0	-943.0	-7,764.0	7,818.7	0.95	-0.60	-0.73	
16,162.0	89.30	268.53	7,044.2	-943.4	-7,779.0	7,833.7	0.94	-0.67	-0.67	

Ensign Energy Services Inc.

Survey Report

Company:	Bayswater Exploration & Production, LLC	Local Co-ordinate Reference:	Well Groves Farm R-34-33HN
Project:	SEC.34-T7N-R65W	TVD Reference:	WELL @ 4867.0ft (Original Well Elev)
Site:	Groves Farm 34-L Pad Sec.34-T7N-R65W	MD Reference:	WELL @ 4867.0ft (Original Well Elev)
Well:	Groves Farm R-34-33HN	North Reference:	True
Wellbore:	Groves Farms R-34-33HN Wellbore #1	Survey Calculation Method:	Minimum Curvature
Design:	Groves Farms R-34-33HN Wellbore #1	Database:	US_EDM

Survey									
Measured Depth (ft)	Inclination (°)	Azimuth (°)	Vertical Depth (ft)	+N/-S (ft)	+E/-W (ft)	Vertical Section (ft)	Dogleg Rate (°/100usft)	Build Rate (°/100usft)	Turn Rate (°/100usft)
16,177.0	89.20	268.43	7,044.4	-943.8	-7,794.0	7,848.6	0.94	-0.67	-0.67
16,192.0	89.93	269.60	7,044.5	-944.0	-7,809.0	7,863.6	9.19	4.87	7.80
16,207.0	90.40	269.97	7,044.5	-944.1	-7,824.0	7,878.5	3.99	3.13	2.47
16,222.0	90.22	269.85	7,044.4	-944.1	-7,839.0	7,893.5	1.44	-1.20	-0.80
16,237.0	90.04	269.74	7,044.3	-944.2	-7,854.0	7,908.4	1.41	-1.20	-0.73
16,252.0	89.87	269.65	7,044.4	-944.2	-7,869.0	7,923.3	1.28	-1.13	-0.60
16,267.0	89.75	269.59	7,044.4	-944.3	-7,884.0	7,938.3	0.89	-0.80	-0.40
16,282.0	89.70	269.60	7,044.5	-944.4	-7,899.0	7,953.2	0.34	-0.33	0.07
16,296.8	89.78	269.71	7,044.5	-944.5	-7,913.8	7,968.0	0.92	0.54	0.74
16,311.7	89.93	269.87	7,044.6	-944.6	-7,928.7	7,982.8	1.48	1.01	1.08
16,326.5	90.11	270.04	7,044.6	-944.6	-7,943.5	7,997.5	1.67	1.21	1.15
16,341.3	90.28	270.21	7,044.5	-944.6	-7,958.3	8,012.3	1.62	1.15	1.15
16,356.2	90.41	270.33	7,044.4	-944.5	-7,973.2	8,027.1	1.19	0.88	0.81
16,371.0	91.11	271.18	7,044.2	-944.3	-7,988.0	8,041.8	7.42	4.72	5.73
16,385.8	92.00	272.00	7,043.8	-943.9	-8,002.8	8,056.5	8.16	6.00	5.53
16,400.7	91.88	271.86	7,043.3	-943.4	-8,017.6	8,071.2	1.24	-0.81	-0.94
16,415.5	91.72	271.67	7,042.9	-942.9	-8,032.4	8,085.9	1.67	-1.08	-1.28
16,430.3	91.54	271.44	7,042.4	-942.5	-8,047.3	8,100.6	1.97	-1.21	-1.55
16,445.2	91.39	271.21	7,042.1	-942.2	-8,062.1	8,115.4	1.85	-1.01	-1.55
16,460.0	91.28	270.98	7,041.7	-941.9	-8,076.9	8,130.1	1.72	-0.74	-1.55
16,475.0	91.27	270.76	7,041.4	-941.7	-8,091.9	8,145.0	1.47	-0.07	-1.47
16,490.0	91.31	270.56	7,041.0	-941.5	-8,106.9	8,159.9	1.36	0.27	-1.33
16,505.0	91.39	270.38	7,040.7	-941.4	-8,121.9	8,174.8	1.31	0.53	-1.20
16,520.0	91.48	270.23	7,040.3	-941.3	-8,136.9	8,189.7	1.17	0.60	-1.00
16,535.0	91.57	270.13	7,039.9	-941.3	-8,151.9	8,204.6	0.90	0.60	-0.67
16,550.0	91.64	270.10	7,039.5	-941.2	-8,166.9	8,219.6	0.51	0.47	-0.20
16,564.8	91.67	270.18	7,039.1	-941.2	-8,181.7	8,234.3	0.58	0.20	0.54
16,579.7	91.67	270.32	7,038.6	-941.1	-8,196.5	8,249.1	0.94	0.00	0.94
16,594.5	91.66	270.48	7,038.2	-941.0	-8,211.4	8,263.8	1.08	-0.07	1.08
16,609.3	91.62	270.60	7,037.8	-940.9	-8,226.2	8,278.6	0.85	-0.27	0.81
16,624.2	91.57	270.67	7,037.4	-940.7	-8,241.0	8,293.3	0.58	-0.34	0.47
16,639.0	90.94	271.21	7,037.0	-940.5	-8,255.9	8,308.0	5.59	-4.25	3.64
16,654.0	89.98	272.60	7,036.9	-940.0	-8,270.8	8,322.9	11.26	-6.40	9.27
16,669.0	89.82	272.17	7,037.0	-939.3	-8,285.8	8,337.8	3.06	-1.07	-2.87
16,684.0	89.65	271.63	7,037.0	-938.8	-8,300.8	8,352.6	3.77	-1.13	-3.60
16,699.0	89.47	271.06	7,037.1	-938.5	-8,315.8	8,367.5	3.98	-1.20	-3.80
16,714.0	89.30	270.52	7,037.3	-938.3	-8,330.8	8,382.4	3.77	-1.13	-3.60
16,729.0	89.15	270.07	7,037.5	-938.2	-8,345.8	8,397.4	3.16	-1.00	-3.00
16,743.8	89.06	269.81	7,037.7	-938.2	-8,360.6	8,412.1	1.86	-0.61	-1.75
16,758.7	88.99	269.67	7,038.0	-938.3	-8,375.5	8,426.9	1.05	-0.47	-0.94
16,773.5	88.94	269.59	7,038.3	-938.4	-8,390.3	8,441.7	0.64	-0.34	-0.54
16,788.3	88.90	269.55	7,038.5	-938.5	-8,405.1	8,456.4	0.38	-0.27	-0.27
16,803.2	88.85	269.51	7,038.8	-938.6	-8,420.0	8,471.2	0.43	-0.34	-0.27
16,818.0	88.79	269.46	7,039.1	-938.8	-8,434.8	8,486.0	0.53	-0.40	-0.34

Ensign Energy Services Inc.

Survey Report

Company:	Bayswater Exploration & Production, LLC	Local Co-ordinate Reference:	Well Groves Farm R-34-33HN
Project:	SEC.34-T7N-R65W	TVD Reference:	WELL @ 4867.0ft (Original Well Elev)
Site:	Groves Farm 34-L Pad Sec.34-T7N-R65W	MD Reference:	WELL @ 4867.0ft (Original Well Elev)
Well:	Groves Farm R-34-33HN	North Reference:	True
Wellbore:	Groves Farms R-34-33HN Wellbore #1	Survey Calculation Method:	Minimum Curvature
Design:	Groves Farms R-34-33HN Wellbore #1	Database:	US_EDM

Survey

Measured Depth (ft)	Inclination (°)	Azimuth (°)	Vertical Depth (ft)	+N/-S (ft)	+E/-W (ft)	Vertical Section (ft)	Dogleg Rate (°/100usft)	Build Rate (°/100usft)	Turn Rate (°/100usft)
16,832.8	88.71	269.36	7,039.5	-938.9	-8,449.6	8,500.8	0.86	-0.54	-0.67
16,847.7	88.61	269.25	7,039.8	-939.1	-8,464.5	8,515.5	1.00	-0.67	-0.74
16,862.5	88.52	269.13	7,040.2	-939.3	-8,479.3	8,530.3	1.01	-0.61	-0.81
16,877.3	88.44	269.05	7,040.6	-939.5	-8,494.1	8,545.1	0.76	-0.54	-0.54
16,892.2	88.38	269.01	7,041.0	-939.8	-8,508.9	8,559.9	0.49	-0.40	-0.27
16,907.0	88.38	269.07	7,041.4	-940.0	-8,523.8	8,574.7	0.40	0.00	0.40
16,922.0	88.45	269.28	7,041.8	-940.3	-8,538.7	8,589.6	1.48	0.47	1.40
16,937.0	88.58	269.58	7,042.2	-940.4	-8,553.7	8,604.5	2.18	0.87	2.00
16,952.0	88.72	269.91	7,042.6	-940.5	-8,568.7	8,619.5	2.39	0.93	2.20
16,967.0	88.86	270.23	7,042.9	-940.4	-8,583.7	8,634.4	2.33	0.93	2.13
16,982.0	88.99	270.51	7,043.1	-940.4	-8,598.7	8,649.3	2.06	0.87	1.87
16,997.0	90.12	271.26	7,043.3	-940.1	-8,613.7	8,664.2	9.04	7.53	5.00
17,011.8	90.72	272.36	7,043.2	-939.7	-8,628.6	8,678.9	8.45	4.05	7.42
17,026.7	90.76	272.39	7,043.0	-939.0	-8,643.4	8,693.6	0.34	0.27	0.20
17,041.5	90.79	272.39	7,042.8	-938.4	-8,658.2	8,708.3	0.20	0.20	0.00
17,056.3	90.81	272.36	7,042.6	-937.8	-8,673.0	8,723.0	0.24	0.13	-0.20
17,071.2	90.82	272.28	7,042.3	-937.2	-8,687.8	8,737.7	0.54	0.07	-0.54
17,086.0	90.81	272.16	7,042.1	-936.6	-8,702.7	8,752.4	0.81	-0.07	-0.81
17,100.8	90.78	271.96	7,041.9	-936.1	-8,717.5	8,767.1	1.36	-0.20	-1.35
17,115.7	90.74	271.72	7,041.7	-935.6	-8,732.3	8,781.8	1.64	-0.27	-1.62
17,130.5	90.70	271.47	7,041.5	-935.2	-8,747.1	8,796.5	1.71	-0.27	-1.69
17,145.3	90.67	271.21	7,041.4	-934.9	-8,762.0	8,811.3	1.76	-0.20	-1.75
17,160.2	90.66	270.98	7,041.2	-934.6	-8,776.8	8,826.0	1.55	-0.07	-1.55
17,175.0	90.68	270.78	7,041.0	-934.3	-8,791.6	8,840.7	1.36	0.13	-1.35
17,190.0	90.77	270.65	7,040.8	-934.2	-8,806.6	8,855.6	1.05	0.60	-0.87
17,205.0	90.88	270.57	7,040.6	-934.0	-8,821.6	8,870.5	0.91	0.73	-0.53
17,220.0	91.01	270.52	7,040.4	-933.9	-8,836.6	8,885.5	0.93	0.87	-0.33
17,235.0	91.13	270.49	7,040.1	-933.7	-8,851.6	8,900.4	0.82	0.80	-0.20
17,250.0	91.22	270.47	7,039.8	-933.6	-8,866.6	8,915.3	0.61	0.60	-0.13
17,265.0	91.27	270.46	7,039.5	-933.5	-8,881.6	8,930.2	0.34	0.33	-0.07
17,279.8	91.24	270.46	7,039.1	-933.4	-8,896.4	8,945.0	0.20	-0.20	0.00
17,294.7	91.16	270.46	7,038.8	-933.2	-8,911.3	8,959.7	0.54	-0.54	0.00
17,309.5	91.05	270.46	7,038.5	-933.1	-8,926.1	8,974.5	0.74	-0.74	0.00
17,324.3	90.93	270.45	7,038.3	-933.0	-8,940.9	8,989.2	0.81	-0.81	-0.07
17,339.2	90.81	270.43	7,038.1	-932.9	-8,955.8	9,004.0	0.82	-0.81	-0.13
17,354.0	90.29	270.71	7,037.9	-932.7	-8,970.6	9,018.7	3.98	-3.51	1.89
17,369.0	89.89	270.88	7,037.9	-932.5	-8,985.6	9,033.6	2.90	-2.67	1.13
17,384.0	89.82	270.79	7,037.9	-932.3	-9,000.6	9,048.5	0.76	-0.47	-0.60
17,399.0	89.75	270.68	7,038.0	-932.1	-9,015.6	9,063.4	0.87	-0.47	-0.73
17,414.0	89.68	270.56	7,038.1	-932.0	-9,030.6	9,078.3	0.93	-0.47	-0.80
17,429.0	89.59	270.44	7,038.2	-931.8	-9,045.6	9,093.3	1.00	-0.60	-0.80
17,444.0	89.49	270.32	7,038.3	-931.7	-9,060.6	9,108.2	1.04	-0.67	-0.80
17,458.8	89.34	270.22	7,038.4	-931.7	-9,075.4	9,122.9	1.22	-1.01	-0.67

Ensign Energy Services Inc.

Survey Report

Company:	Bayswater Exploration & Production, LLC	Local Co-ordinate Reference:	Well Groves Farm R-34-33HN
Project:	SEC.34-T7N-R65W	TVD Reference:	WELL @ 4867.0ft (Original Well Elev)
Site:	Groves Farm 34-L Pad Sec.34-T7N-R65W	MD Reference:	WELL @ 4867.0ft (Original Well Elev)
Well:	Groves Farm R-34-33HN	North Reference:	True
Wellbore:	Groves Farms R-34-33HN Wellbore #1	Survey Calculation Method:	Minimum Curvature
Design:	Groves Farms R-34-33HN Wellbore #1	Database:	US_EDM

Survey

Measured Depth (ft)	Inclination (°)	Azimuth (°)	Vertical Depth (ft)	+N/-S (ft)	+E/-W (ft)	Vertical Section (ft)	Dogleg Rate (°/100usft)	Build Rate (°/100usft)	Turn Rate (°/100usft)
17,473.7	89.18	270.12	7,038.6	-931.6	-9,090.2	9,137.7	1.27	-1.08	-0.67
17,488.5	89.01	270.03	7,038.8	-931.6	-9,105.1	9,152.5	1.30	-1.15	-0.61
17,503.3	88.85	269.95	7,039.1	-931.6	-9,119.9	9,167.2	1.21	-1.08	-0.54
17,518.2	88.71	269.88	7,039.4	-931.6	-9,134.7	9,182.0	1.05	-0.94	-0.47
17,533.0	88.60	269.84	7,039.8	-931.7	-9,149.6	9,196.7	0.79	-0.74	-0.27
17,548.0	88.56	269.84	7,040.2	-931.7	-9,164.6	9,211.7	0.27	-0.27	0.00
17,563.0	88.55	269.86	7,040.5	-931.7	-9,179.5	9,226.6	0.15	-0.07	0.13
17,578.0	88.56	269.89	7,040.9	-931.8	-9,194.5	9,241.5	0.21	0.07	0.20
17,593.0	88.57	269.92	7,041.3	-931.8	-9,209.5	9,256.5	0.21	0.07	0.20
17,608.0	88.56	269.93	7,041.7	-931.8	-9,224.5	9,271.4	0.09	-0.07	0.07
17,623.0	88.52	269.91	7,042.1	-931.8	-9,239.5	9,286.3	0.30	-0.27	-0.13
17,638.0	88.41	269.84	7,042.5	-931.9	-9,254.5	9,301.2	0.87	-0.73	-0.47
17,653.0	88.27	269.74	7,042.9	-931.9	-9,269.5	9,316.2	1.15	-0.93	-0.67
17,668.0	88.10	269.63	7,043.4	-932.0	-9,284.5	9,331.1	1.35	-1.13	-0.73
17,683.0	87.93	269.53	7,043.9	-932.1	-9,299.5	9,346.0	1.31	-1.13	-0.67
17,698.0	87.77	269.44	7,044.4	-932.3	-9,314.5	9,361.0	1.22	-1.07	-0.60
17,713.0	87.62	269.38	7,045.0	-932.4	-9,329.5	9,375.9	1.08	-1.00	-0.40
17,727.8	87.52	269.38	7,045.7	-932.6	-9,344.3	9,390.7	0.67	-0.67	0.00
17,742.7	87.43	269.41	7,046.3	-932.7	-9,359.1	9,405.4	0.64	-0.61	0.20
17,757.5	87.34	269.46	7,047.0	-932.9	-9,373.9	9,420.2	0.69	-0.61	0.34
17,772.3	87.23	269.51	7,047.7	-933.0	-9,388.7	9,435.0	0.81	-0.74	0.34
17,787.2	87.09	269.56	7,048.4	-933.1	-9,403.6	9,449.7	1.00	-0.94	0.34
17,802.0	88.26	269.89	7,049.0	-933.2	-9,418.4	9,464.5	8.20	7.89	2.23
17,815.3	88.92	270.22	7,049.4	-933.2	-9,431.7	9,477.7	5.54	4.95	2.48
17,828.7	88.58	270.20	7,049.7	-933.1	-9,445.0	9,491.0	2.55	-2.55	-0.15
17,842.0	88.25	270.18	7,050.0	-933.1	-9,458.4	9,504.3	2.48	-2.48	-0.15
17,855.6	88.00	270.17	7,050.5	-933.0	-9,472.0	9,517.8	1.84	-1.84	-0.07
17,869.2	87.81	270.15	7,051.0	-933.0	-9,485.6	9,531.3	1.40	-1.40	-0.15
17,882.8	87.65	270.14	7,051.5	-933.0	-9,499.1	9,544.8	1.18	-1.18	-0.07
17,896.4	87.51	270.12	7,052.1	-932.9	-9,512.7	9,558.4	1.04	-1.03	-0.15
17,910.0	87.39	270.11	7,052.7	-932.9	-9,526.3	9,571.9	0.89	-0.88	-0.07

Design Targets

Target Name	Dip Angle (°)	Dip Dir. (°)	TVD (ft)	+N/-S (ft)	+E/-W (ft)	Northing (usft)	Easting (usft)	Latitude	Longitude
- hit/miss target									
- Shape									
SHL 2561'FSL & 894'I	0.00	0.00	1.0	0.0	0.0	1,437,110.74	3,238,240.76	40.530109	-104.642931
- survey hits target center									
- Point									
Projected BHL 1346'F	0.00	0.00	7,052.7	-932.9	-9,526.3	1,436,085.85	3,228,724.24	40.527543	-104.677199
- survey hits target center									
- Point									

Ensign Energy Services Inc.

Survey Report

Company:	Bayswater Exploration & Production, LLC	Local Co-ordinate Reference:	Well Groves Farm R-34-33HN
Project:	SEC.34-T7N-R65W	TVD Reference:	WELL @ 4867.0ft (Original Well Elev)
Site:	Groves Farm 34-L Pad Sec.34-T7N-R65W	MD Reference:	WELL @ 4867.0ft (Original Well Elev)
Well:	Groves Farm R-34-33HN	North Reference:	True
Wellbore:	Groves Farms R-34-33HN Wellbore #1	Survey Calculation Method:	Minimum Curvature
Design:	Groves Farms R-34-33HN Wellbore #1	Database:	US_EDM

Survey Annotations

Measured Depth (ft)	Vertical Depth (ft)	Local Coordinates		Comment
		+N/-S (ft)	+E/-W (ft)	
7,634.1	6,998.7	-1,090.5	742.8	TPZ - 1493'FSL & 150'FEL Sec.34

Checked By: _____ Approved By: _____ Date: _____