



---

# **Bayswater Exploration & Production, LLC**

## **SURFACE POST JOB REPORT**

**Groves Farm O-34-33HC 05-123-51190**  
**S:34 T:7N R:65W Weld CO**

CallSheet #: 75305  
Proposal #: 50524



**SURFACE Post Job Report**

**Attention:** Trevor Smith | (720) 335-9045 | [trevor.smith@iptenergyservices.com](mailto:trevor.smith@iptenergyservices.com)  
Bayswater Exploration & Production, LLC  
730 17TH STREET | DENVER, CO 80202

---

Dear Trevor Smith,

Thank you for the opportunity to provide cementing services on this well. American Cementing strives to achieve complete customer satisfaction. If you have any questions regarding the services or data provided, please contact American Cementing at any time.

Sincerely,

**Jason Creel**

Field Engineer | (307) 256-0306 | [Jason.creel@americancementing.com](mailto:Jason.creel@americancementing.com)

**Field Office**      1716 E Allison Rd, Cheyenne, WY 82007  
Phone: (307) 638-5585

## Table of Contents

1 Job Details & Summary .....	3
1.1 Geometry .....	3
1.2 Equipment / People .....	3
1.3 Timing .....	3
1.4 General Job Information .....	3
1.5 Job Details .....	3
1.6 Job Details (cont.) .....	3
1.7 Circulation .....	3
1.8 Job Execution Information .....	4
1.9 Job Fluid Details .....	4
2 Job Logs .....	5
3 Water Analysis .....	6
4 Pump Diagrams .....	7

## 1 Job Details & Summary

### 1.1 Geometry

Type	Function	OD (in)	ID (in)	Weight (lb/ft)	Top (ft)	Bottom (ft)	Excess (%)
Open Hole	Outer	n/a	13.5	n/a	0	1557	25
Casing	Inner	9.625	8.921	36	0	1548	0

### 1.2 Equipment / People

Unit Type	Unit
Pneumatic Trailer	CTF-018
Tractor	TRS-106
Bulk Trailer	CTF-001
Cement Pump	CPF-074
Field Storage Silo	CTS-442

### 1.3 Timing

Event	Date/Time
Call Out	10/29/2020 05:00
Depart Facility	10/29/2020 06:30
On Location	10/29/2020 07:30
Rig Up Iron	10/29/2020 07:45
Job Started	10/29/2020 12:10
Job Completed	10/29/2020 13:13
Rig Down Iron	10/29/2020 13:20
Depart Location	10/29/2020 14:00

### 1.4 General Job Information

Metrics	Value
Well Fluid Density	8.4 lb/gal
Well Fluid Type	Water
Rig Circulation Vol	300 bbls
Rig Circulation Time	25 hours
Calculated Displacement	116.2 bbls
Actual Displacement	116.2 bbls
Total Spacer to Surface	20 bbls
Total CMT to Surface	34 bbls
Well Topped Out	No

### 1.5 Job Details

Metrics	Value
Flare Prior to Job	No
Flare During Job	No
Flare at End of Job	No
Well Full Prior to Job	Yes
Well Fluid Density Into Well	8.4 lb/gal
Well Fluid Density Out of Well	8.4 lb/gal

### 1.6 Job Details (cont.)

Metrics	Value
BHCT	86 °F
BHST	110 °F

### 1.7 Circulation

Lost Circulation Experienced
No

### 1.8 Job Execution Information

Job	Fluid	Product	Function	Density (lb/gal)	Yield (ft <sup>3</sup> /sk)	Water Rq. (gal/sk)	Water Rq. (gal/bbl)	Volume (sk)	Volume (bbl)	Top (ft)
1	1	Fresh Water	Spacer	8.34			42.00		20.00	0
1	2	ACem S100.3.1C	Lead	12.00	2.53	14.86		258.00	116.21	0
1	3	ACem S100.3.1C	Tail	12.50	2.23	12.58		145.00	57.46	1055
1	4	Base Oil	DisplacementFinal	7.50			42.00		116.20	0

### 1.9 Job Fluid Details

Job	Fluid	Type	Fluid	Product	Function	Conc.	Uom
1	2	Lead	ACem S100.3.1C	ASTM TYPE III	Cement	100.00	%
1	2	Lead	ACem S100.3.1C	A-10	Accelerator	5.00	%BWOB
1	2	Lead	ACem S100.3.1C	A-2	Accelerator	2.00	lb/sk
1	2	Lead	ACem S100.3.1C	A-7P	Accelerator	2.00	lb/sk
1	2	Lead	ACem S100.3.1C	FP-24	Defoamer	0.30	%BWOB
1	2	Lead	ACem S100.3.1C	IntegraSeal POLI	LostCirculation	0.13	lb/sk
1	3	Tail	ACem S100.3.1C	ASTM TYPE III	Cement	100.00	%
1	3	Tail	ACem S100.3.1C	A-10	Accelerator	5.00	%BWOB
1	3	Tail	ACem S100.3.1C	A-2	Accelerator	2.00	lb/sk
1	3	Tail	ACem S100.3.1C	A-7P	Accelerator	2.00	lb/sk
1	3	Tail	ACem S100.3.1C	FP-24	Defoamer	0.30	%BWOB
1	3	Tail	ACem S100.3.1C	IntegraSeal POLI	LostCirculation	0.13	lb/sk

## 2 Job Logs

Line	Event	Date (MM/DD/YY)	Time (HH:MM)	Density (lb/gal)	Pump Rate (bpm)	Pump Volume (bbls)	Pipe Pressure (psi)	Comment
1	Callout	10/29/2020	05:00					Customer calls with an O/L time of 10:30 on 10/29/20
2	Leave Yard	10/29/2020	06:30					Leave yard to travel to location
3	Arrive on Location	10/29/2020	07:30					Arrive on location, rig is TOH with drill pipe
4	Spot Trucks	10/29/2020	07:40					
5	Rig Up Iron	10/29/2020	08:15					Rig up water, bulk, and iron to the standpipe
6	Waiting	10/29/2020	08:35					Waiting on the rig to finish running casing, and circulate
7	Rig up cement head	10/29/2020	11:30					Rig up cement head for rig to circulate through
8	Safety Meeting	10/29/2020	12:00					Pre-job safety meeting with BJ crew, Rig crew, and Company man
9	Fill Lines	10/29/2020	12:10	8.34	4.3	5	138	Fill pumps and lines
10	Pressure Test	10/29/2020	12:12	8.34	0	0	2348	Test pumps and lines
11	Pump Spacer	10/29/2020	12:15	8.34	5.7	20	241	Pump 20 bbls of fresh water + Dye
12	Pump Lead	10/29/2020	12:18	12	6.5	116	436	Pump 258 sks of lead @12 ppg, Yield: 2.53 Mix Water: 14.86
13	Pump Tail	10/29/2020	12:36	12.5	6.5	57	507	Pump 145 sks of tail @12.5 ppg, Yield: 2.23 Mix Water: 12.58, Had to drop rate with 20 bbls left to make sure we got everything out of Silo CTS-442
14	Drop Top Plug	10/29/2020	12:48					Shut down, and drop plug
15	Pump Displacement	10/29/2020	12:51	7.5	8	0	391	Send plug start with pumping base oil displacement
16	Spacer To Surface	10/29/2020	12:58	7.5	8	50	661	Start getting Dye to surface
17	Cement To Surface	10/29/2020	13:02	7.5	8	82	868	Start getting good cement to surface
18	Pump Displacement	10/29/2020	13:04	7.5	2.8	100	489	Drop rate to land the plug
19	Land Plug	10/29/2020	13:10	7.5	2.8	116.2	1128	Land plug (FCP was 523) Bumped up to 1128, 34 bbls of cement to surface
20	Check floats	10/29/2020	13:14	7.5	0	0	0	Check floats (floats held) .5 bbls back
21	Safety Meeting	10/29/2020	13:16					Pre-rig down safety meeting
22	Rig down Iron	10/29/2020	13:20					Rig down cement head, Iron, bulk, and water
23	Leave Location	10/29/2020	14:00					Leave location to travel back to the yard

### 3 Water Analysis

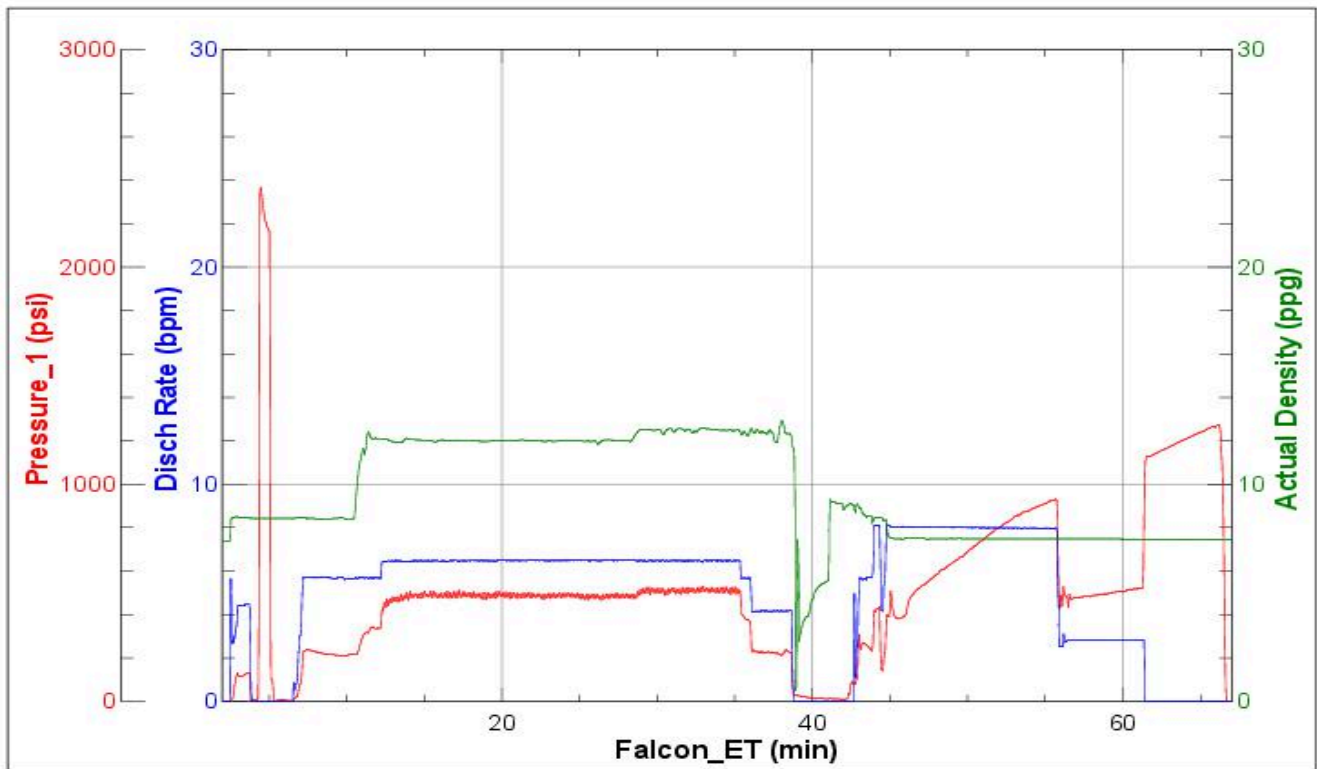
Metrics	Value	Recommended
Water Source	None	
Temperature	45 °F	50-80 °F
pH Level	7	5.5-8.5
Chlorides	500 mg/L	0-3000 mg/L
Total Alkalinity	100	0-1000
Total Hardness	0 mg/L	0-500 mg/L
Carbonates	0 mg/L	0-100 mg/L
Sulfates	250 mg/L	0-1500 mg/L
Potassium	0 mg/L	0-3000 mg/L
Iron	50 mg/L	0-300 mg/L

## 4 Pump Diagrams



**JobMaster Program Version 5.01C 1**

Job Number:  
Customer: Bayswater  
Well Name: Groves Farms O-34-33HC



BJ Services

Job Start: Thursday, October 29, 2020