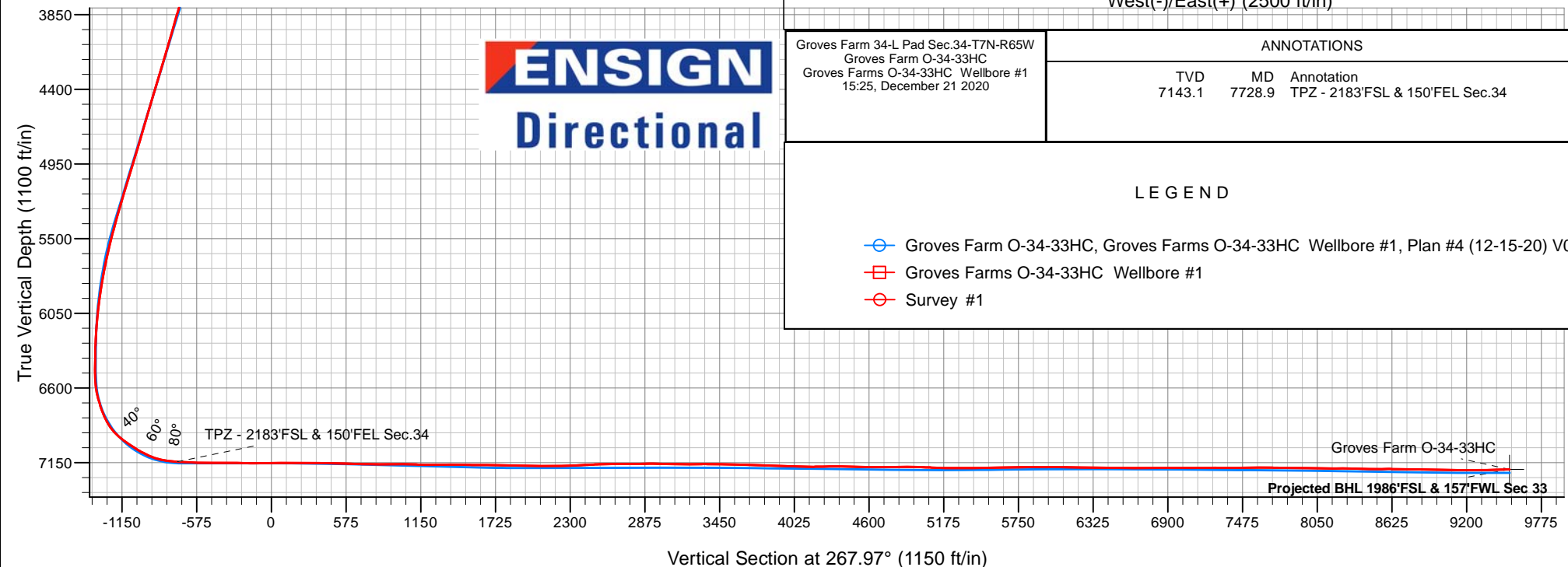
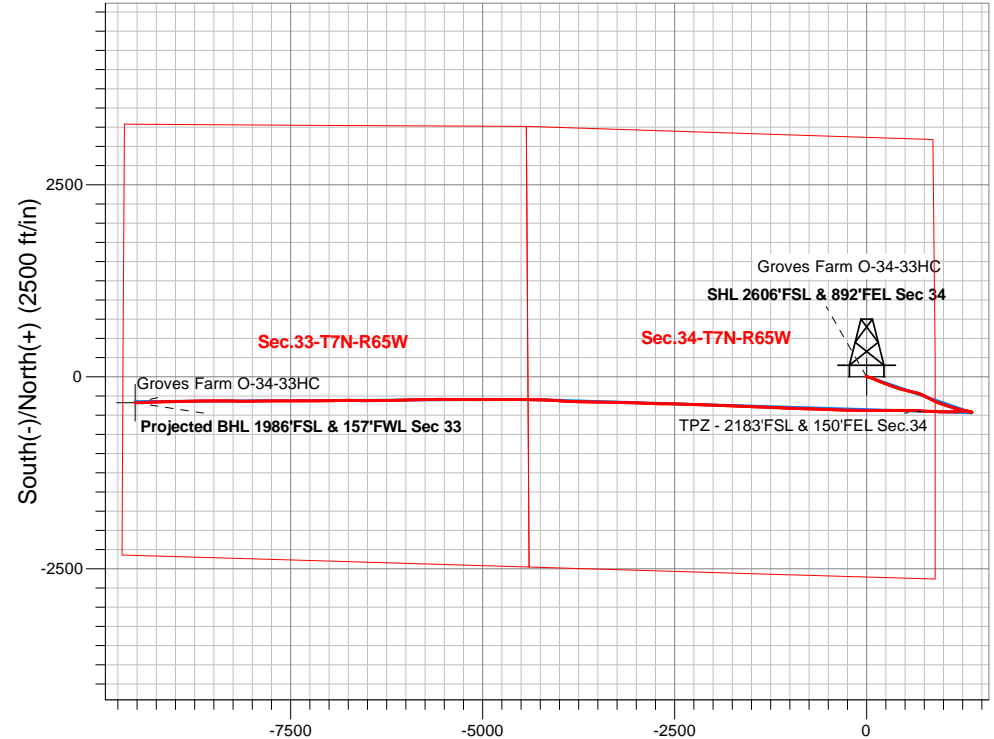


Bayswater Exploration & Production, LLC

Well Name: Groves Farm O-34-33HC
Surface Location: Groves Farm 34-L Pad Sec.34-T7N-R65W
North American Datum 1983 , US State Plane 1983, Colorado Northern Zone
Ground Elevation: 4844.0
+N/-S +E/-W Northing Easting Latitude Longitude Slot
0.0 0.0 1437155.92 3238241.43 40.530233 -104.642927
Ensign 153 RKB - 23' RKB @ 4867.0ft (Ensign 153 RKB - 23')

FINAL SURVEY

Projected Bottom Hole Location
18000'MD 7200'TVD 338'S & 9523'W
of SHL 92.03° Inc @ 268.21° Azm



Bayswater Exploration & Production, LLC

SEC.34-T7N-R65W

Groves Farm 34-L Pad Sec.34-T7N-R65W

Groves Farm O-34-33HC

Groves Farms O-34-33HC Wellbore #1

Survey: Survey #1

Standard Survey Report

21 December, 2020

Ensign Energy Services Inc.

Survey Report

| | | | |
|------------------|---|-------------------------------------|---------------------------------------|
| Company: | Bayswater Exploration & Production, LLC | Local Co-ordinate Reference: | Well Groves Farm O-34-33HC |
| Project: | SEC.34-T7N-R65W | TVD Reference: | RKB @ 4867.0ft (Ensign 153 RKB - 23') |
| Site: | Groves Farm 34-L Pad Sec.34-T7N-R65W | MD Reference: | RKB @ 4867.0ft (Ensign 153 RKB - 23') |
| Well: | Groves Farm O-34-33HC | North Reference: | True |
| Wellbore: | Groves Farms O-34-33HC Wellbore #1 | Survey Calculation Method: | Minimum Curvature |
| Design: | Groves Farms O-34-33HC Wellbore #1 | Database: | US_EDM |

| | | | |
|--------------------|----------------------------------|----------------------|-----------------------------|
| Project | SEC.34-T7N-R65W, Weld County, CO | | |
| Map System: | US State Plane 1983 | System Datum: | Mean Sea Level |
| Geo Datum: | North American Datum 1983 | | Using Well Reference Point |
| Map Zone: | Colorado Northern Zone | | Using geodetic scale factor |

| | | | | | |
|-----------------------|--------------------------------------|--------------|-------------------|-------------------|-------------|
| Site | Groves Farm 34-L Pad Sec.34-T7N-R65W | | | | |
| Site Position: | | Northing: | 1,437,170.88 usft | Latitude: | 40.530274 |
| From: | Lat/Long | Easting: | 3,238,241.57 usft | Longitude: | -104.642926 |
| Position Uncertainty: | 0.0 ft | Slot Radius: | 13-3/16 " | Grid Convergence: | 0.55 ° |

| Well | Groves Farm O-34-33HC | | | | | |
|----------------------|-----------------------|--------|---------------------|-------------------|---------------|-------------|
| Well Position | +N-S | 0.0 ft | Northing: | 1,437,155.92 usft | Latitude: | 40.530233 |
| | +E-W | 0.0 ft | Easting: | 3,238,241.44 usft | Longitude: | -104.642927 |
| Position Uncertainty | | 0.0 ft | Wellhead Elevation: | 0.0 ft | Ground Level: | 4,844.0 ft |

| | | | | | |
|------------------|------------------------------------|--------------------|------------------------|----------------------|----------------------------|
| Wellbore | Groves Farms O-34-33HC Wellbore #1 | | | | |
| Magnetics | Model Name | Sample Date | Declination (°) | Dip Angle (°) | Field Strength (nT) |
| | HDGM | 12/15/2020 | 7.75 | 66.85 | 52,056 |

| | | | | | |
|--------------------------|------------------------------------|-------------------|-------------------|----------------------|-----|
| Design | Groves Farms O-34-33HC Wellbore #1 | | | | |
| Audit Notes: | | | | | |
| Version: | 1.0 | Phase: | ACTUAL | Tie On Depth: | 0.0 |
| Vertical Section: | Depth From (TVD) (ft) | +N/-S (ft) | +E/-W (ft) | Direction (°) | |
| | 0.0 | 0.0 | 0.0 | 267.97 | |

| | | | | | |
|-----------------------|----------------|--------------------------------------|------------------|--------------------|--|
| Survey Program | Date | 12/21/2020 | | | |
| From (ft) | To (ft) | Survey (Wellbore) | Tool Name | Description | |
| 205.0 | 18,000.0 | Survey #1 (Groves Farms O-34-33HC We | MWD | MWD - Standard | |

| | | | | | | | | | | |
|----------------------------|------------------------|--------------------|----------------------------|-------------------|-------------------|------------------------------|--------------------------------|-------------------------------|------------------------------|--|
| Survey | | | | | | | | | | |
| Measured Depth (ft) | Inclination (°) | Azimuth (°) | Vertical Depth (ft) | +N/-S (ft) | +E/-W (ft) | Vertical Section (ft) | Dogleg Rate (°/100usft) | Build Rate (°/100usft) | Turn Rate (°/100usft) | |
| 0.0 | 0.00 | 0.00 | 0.0 | 0.0 | 0.0 | 0.0 | 0.00 | 0.00 | 0.00 | |
| 205.0 | 0.26 | 304.49 | 205.0 | 0.3 | -0.4 | 0.4 | 0.13 | 0.13 | 0.00 | |
| 294.0 | 0.26 | 329.45 | 294.0 | 0.6 | -0.7 | 0.6 | 0.13 | 0.00 | 28.05 | |
| 384.0 | 0.35 | 319.43 | 384.0 | 0.9 | -0.9 | 0.9 | 0.12 | 0.10 | -11.13 | |
| 474.0 | 0.44 | 295.88 | 474.0 | 1.3 | -1.4 | 1.4 | 0.20 | 0.10 | -26.17 | |
| 563.0 | 0.79 | 300.97 | 563.0 | 1.8 | -2.3 | 2.2 | 0.40 | 0.39 | 5.72 | |
| 653.0 | 0.62 | 309.41 | 653.0 | 2.4 | -3.2 | 3.1 | 0.22 | -0.19 | 9.38 | |
| 742.0 | 0.62 | 302.91 | 742.0 | 3.0 | -3.9 | 3.8 | 0.08 | 0.00 | -7.30 | |
| 831.0 | 0.97 | 289.55 | 831.0 | 3.5 | -5.1 | 4.9 | 0.44 | 0.39 | -15.01 | |
| 920.0 | 1.32 | 294.47 | 920.0 | 4.1 | -6.7 | 6.5 | 0.41 | 0.39 | 5.53 | |

Ensign Energy Services Inc.

Survey Report

| | | | |
|------------------|---|-------------------------------------|---------------------------------------|
| Company: | Bayswater Exploration & Production, LLC | Local Co-ordinate Reference: | Well Groves Farm O-34-33HC |
| Project: | SEC.34-T7N-R65W | TVD Reference: | RKB @ 4867.0ft (Ensign 153 RKB - 23') |
| Site: | Groves Farm 34-L Pad Sec.34-T7N-R65W | MD Reference: | RKB @ 4867.0ft (Ensign 153 RKB - 23') |
| Well: | Groves Farm O-34-33HC | North Reference: | True |
| Wellbore: | Groves Farms O-34-33HC Wellbore #1 | Survey Calculation Method: | Minimum Curvature |
| Design: | Groves Farms O-34-33HC Wellbore #1 | Database: | US_EDM |

| Survey | | | | | | | | | | |
|---------------------|-----------------|-------------|---------------------|------------|------------|-----------------------|-------------------------|------------------------|-----------------------|--|
| Measured Depth (ft) | Inclination (°) | Azimuth (°) | Vertical Depth (ft) | +N/-S (ft) | +E/-W (ft) | Vertical Section (ft) | Dogleg Rate (°/100usft) | Build Rate (°/100usft) | Turn Rate (°/100usft) | |
| 1,010.0 | 0.62 | 280.93 | 1,009.9 | 4.7 | -8.1 | 8.0 | 0.81 | -0.78 | -15.04 | |
| 1,099.0 | 1.49 | 116.58 | 1,098.9 | 4.2 | -7.6 | 7.4 | 2.35 | 0.98 | -184.66 | |
| 1,189.0 | 3.34 | 104.80 | 1,188.8 | 3.0 | -4.0 | 3.9 | 2.12 | 2.06 | -13.09 | |
| 1,278.0 | 4.75 | 102.69 | 1,277.6 | 1.6 | 2.1 | -2.2 | 1.59 | 1.58 | -2.37 | |
| 1,368.0 | 6.68 | 104.45 | 1,367.2 | -0.5 | 10.8 | -10.8 | 2.15 | 2.14 | 1.96 | |
| 1,495.0 | 8.62 | 106.56 | 1,493.0 | -5.1 | 27.1 | -26.9 | 1.54 | 1.53 | 1.66 | |
| 1,509.0 | 8.67 | 104.79 | 1,506.9 | -5.7 | 29.1 | -28.9 | 1.93 | 0.36 | -12.64 | |
| 1,523.0 | 8.73 | 102.85 | 1,520.7 | -6.2 | 31.2 | -30.9 | 2.14 | 0.43 | -13.86 | |
| 1,537.0 | 8.80 | 100.85 | 1,534.6 | -6.6 | 33.3 | -33.0 | 2.23 | 0.50 | -14.29 | |
| 1,551.0 | 8.88 | 98.96 | 1,548.4 | -7.0 | 35.4 | -35.1 | 2.15 | 0.57 | -13.50 | |
| 1,565.0 | 8.83 | 104.06 | 1,562.2 | -7.4 | 37.5 | -37.2 | 5.62 | -0.36 | 36.43 | |
| 1,579.0 | 8.87 | 104.60 | 1,576.1 | -7.9 | 39.6 | -39.3 | 0.66 | 0.29 | 3.86 | |
| 1,593.0 | 8.91 | 103.52 | 1,589.9 | -8.5 | 41.7 | -41.4 | 1.23 | 0.29 | -7.71 | |
| 1,608.0 | 8.93 | 103.09 | 1,604.7 | -9.0 | 44.0 | -43.6 | 0.46 | 0.13 | -2.87 | |
| 1,623.0 | 8.94 | 103.14 | 1,619.5 | -9.5 | 46.2 | -45.9 | 0.08 | 0.07 | 0.33 | |
| 1,638.0 | 8.94 | 103.49 | 1,634.3 | -10.1 | 48.5 | -48.1 | 0.36 | 0.00 | 2.33 | |
| 1,653.0 | 8.95 | 104.02 | 1,649.2 | -10.6 | 50.8 | -50.3 | 0.55 | 0.07 | 3.53 | |
| 1,668.0 | 9.05 | 104.90 | 1,664.0 | -11.2 | 53.0 | -52.6 | 1.13 | 0.67 | 5.87 | |
| 1,683.0 | 10.43 | 107.88 | 1,678.8 | -11.9 | 55.5 | -55.0 | 9.79 | 9.20 | 19.87 | |
| 1,697.8 | 10.39 | 108.58 | 1,693.3 | -12.8 | 58.0 | -57.5 | 0.89 | -0.27 | 4.72 | |
| 1,712.7 | 10.35 | 109.36 | 1,707.9 | -13.6 | 60.5 | -60.0 | 0.98 | -0.27 | 5.26 | |
| 1,727.5 | 10.32 | 110.16 | 1,722.5 | -14.5 | 63.0 | -62.5 | 0.99 | -0.20 | 5.39 | |
| 1,742.3 | 10.29 | 110.90 | 1,737.1 | -15.5 | 65.5 | -64.9 | 0.92 | -0.20 | 4.99 | |
| 1,757.2 | 10.76 | 112.12 | 1,751.7 | -16.5 | 68.0 | -67.4 | 3.50 | 3.17 | 8.22 | |
| 1,772.0 | 12.46 | 114.13 | 1,766.2 | -17.6 | 70.8 | -70.1 | 11.78 | 11.46 | 13.55 | |
| 1,787.0 | 12.51 | 114.36 | 1,780.9 | -19.0 | 73.7 | -73.0 | 0.47 | 0.33 | 1.53 | |
| 1,802.0 | 12.58 | 114.52 | 1,795.5 | -20.3 | 76.7 | -75.9 | 0.52 | 0.47 | 1.07 | |
| 1,817.0 | 12.65 | 114.63 | 1,810.2 | -21.7 | 79.7 | -78.9 | 0.49 | 0.47 | 0.73 | |
| 1,832.0 | 12.73 | 114.70 | 1,824.8 | -23.1 | 82.7 | -81.8 | 0.54 | 0.53 | 0.47 | |
| 1,847.0 | 12.80 | 114.73 | 1,839.4 | -24.4 | 85.7 | -84.8 | 0.47 | 0.47 | 0.20 | |
| 1,862.0 | 14.73 | 113.61 | 1,854.0 | -25.9 | 88.9 | -88.0 | 12.99 | 12.87 | -7.47 | |
| 1,877.0 | 15.01 | 113.42 | 1,868.5 | -27.4 | 92.5 | -91.4 | 1.89 | 1.87 | -1.27 | |
| 1,892.0 | 15.03 | 113.35 | 1,883.0 | -29.0 | 96.0 | -95.0 | 0.18 | 0.13 | -0.47 | |
| 1,907.0 | 15.05 | 113.27 | 1,897.5 | -30.5 | 99.6 | -98.5 | 0.19 | 0.13 | -0.53 | |
| 1,922.0 | 15.07 | 113.16 | 1,911.9 | -32.1 | 103.2 | -102.0 | 0.23 | 0.13 | -0.73 | |
| 1,937.0 | 15.50 | 113.96 | 1,926.4 | -33.6 | 106.8 | -105.6 | 3.19 | 2.87 | 5.33 | |
| 1,952.0 | 16.64 | 116.17 | 1,940.8 | -35.4 | 110.6 | -109.3 | 8.62 | 7.60 | 14.73 | |
| 1,966.8 | 16.72 | 115.99 | 1,955.0 | -37.3 | 114.4 | -113.0 | 0.64 | 0.54 | -1.21 | |
| 1,981.7 | 16.82 | 115.78 | 1,969.2 | -39.1 | 118.3 | -116.8 | 0.79 | 0.67 | -1.42 | |
| 1,996.5 | 16.92 | 115.58 | 1,983.4 | -41.0 | 122.1 | -120.6 | 0.78 | 0.67 | -1.35 | |
| 2,011.3 | 17.03 | 115.39 | 1,997.6 | -42.9 | 126.0 | -124.4 | 0.83 | 0.74 | -1.28 | |
| 2,026.2 | 17.14 | 115.24 | 2,011.8 | -44.7 | 130.0 | -128.3 | 0.80 | 0.74 | -1.01 | |
| 2,041.0 | 18.74 | 113.11 | 2,025.9 | -46.6 | 134.2 | -132.4 | 11.66 | 10.79 | -14.36 | |
| 2,055.8 | 19.57 | 112.34 | 2,039.9 | -48.5 | 138.6 | -136.8 | 5.85 | 5.60 | -5.19 | |

Ensign Energy Services Inc.

Survey Report

| | | | |
|------------------|---|-------------------------------------|---------------------------------------|
| Company: | Bayswater Exploration & Production, LLC | Local Co-ordinate Reference: | Well Groves Farm O-34-33HC |
| Project: | SEC.34-T7N-R65W | TVD Reference: | RKB @ 4867.0ft (Ensign 153 RKB - 23') |
| Site: | Groves Farm 34-L Pad Sec.34-T7N-R65W | MD Reference: | RKB @ 4867.0ft (Ensign 153 RKB - 23') |
| Well: | Groves Farm O-34-33HC | North Reference: | True |
| Wellbore: | Groves Farms O-34-33HC Wellbore #1 | Survey Calculation Method: | Minimum Curvature |
| Design: | Groves Farms O-34-33HC Wellbore #1 | Database: | US_EDM |

| Survey | | | | | | | | | | |
|---------------------|-----------------|-------------|---------------------|------------|------------|-----------------------|-------------------------|------------------------|-----------------------|--|
| Measured Depth (ft) | Inclination (°) | Azimuth (°) | Vertical Depth (ft) | +N/-S (ft) | +E/-W (ft) | Vertical Section (ft) | Dogleg Rate (°/100usft) | Build Rate (°/100usft) | Turn Rate (°/100usft) | |
| 2,070.7 | 19.69 | 112.35 | 2,053.9 | -50.4 | 143.3 | -141.4 | 0.81 | 0.81 | 0.07 | |
| 2,085.5 | 19.81 | 112.38 | 2,067.9 | -52.3 | 147.9 | -145.9 | 0.81 | 0.81 | 0.20 | |
| 2,100.3 | 19.93 | 112.41 | 2,081.8 | -54.2 | 152.6 | -150.5 | 0.81 | 0.81 | 0.20 | |
| 2,115.2 | 20.03 | 112.44 | 2,095.8 | -56.1 | 157.2 | -155.1 | 0.68 | 0.67 | 0.20 | |
| 2,130.0 | 21.46 | 112.02 | 2,109.6 | -58.1 | 162.1 | -159.9 | 9.69 | 9.64 | -2.83 | |
| 2,145.0 | 21.88 | 111.89 | 2,123.6 | -60.2 | 167.2 | -165.0 | 2.82 | 2.80 | -0.87 | |
| 2,160.0 | 21.90 | 111.84 | 2,137.5 | -62.3 | 172.4 | -170.1 | 0.18 | 0.13 | -0.33 | |
| 2,175.0 | 21.90 | 111.78 | 2,151.4 | -64.4 | 177.6 | -175.2 | 0.15 | 0.00 | -0.40 | |
| 2,190.0 | 21.90 | 111.69 | 2,165.3 | -66.4 | 182.8 | -180.3 | 0.22 | 0.00 | -0.60 | |
| 2,205.0 | 21.90 | 111.58 | 2,179.2 | -68.5 | 188.0 | -185.5 | 0.27 | 0.00 | -0.73 | |
| 2,220.0 | 21.89 | 111.42 | 2,193.1 | -70.5 | 193.2 | -190.6 | 0.40 | -0.07 | -1.07 | |
| 2,234.7 | 21.88 | 111.18 | 2,206.8 | -72.5 | 198.3 | -195.6 | 0.61 | -0.07 | -1.64 | |
| 2,249.3 | 21.87 | 110.91 | 2,220.4 | -74.5 | 203.4 | -200.6 | 0.69 | -0.07 | -1.84 | |
| 2,264.0 | 21.87 | 110.62 | 2,234.0 | -76.4 | 208.5 | -205.7 | 0.74 | 0.00 | -1.98 | |
| 2,278.7 | 21.86 | 110.34 | 2,247.6 | -78.3 | 213.6 | -210.7 | 0.71 | -0.07 | -1.91 | |
| 2,293.3 | 21.85 | 110.09 | 2,261.2 | -80.2 | 218.8 | -215.8 | 0.64 | -0.07 | -1.71 | |
| 2,308.0 | 21.84 | 109.90 | 2,274.8 | -82.1 | 223.9 | -220.8 | 0.49 | -0.07 | -1.30 | |
| 2,322.8 | 21.82 | 109.80 | 2,288.6 | -84.0 | 229.1 | -226.0 | 0.28 | -0.13 | -0.67 | |
| 2,337.7 | 21.80 | 109.77 | 2,302.4 | -85.8 | 234.3 | -231.1 | 0.15 | -0.13 | -0.20 | |
| 2,352.5 | 21.77 | 109.78 | 2,316.1 | -87.7 | 239.5 | -236.2 | 0.20 | -0.20 | 0.07 | |
| 2,367.3 | 21.75 | 109.82 | 2,329.9 | -89.6 | 244.6 | -241.3 | 0.17 | -0.13 | 0.27 | |
| 2,382.2 | 21.72 | 109.88 | 2,343.7 | -91.4 | 249.8 | -246.4 | 0.25 | -0.20 | 0.40 | |
| 2,397.0 | 21.69 | 109.95 | 2,357.5 | -93.3 | 254.9 | -251.5 | 0.27 | -0.20 | 0.47 | |
| 2,412.0 | 21.67 | 110.04 | 2,371.4 | -95.2 | 260.2 | -256.6 | 0.26 | -0.13 | 0.60 | |
| 2,427.0 | 21.64 | 110.13 | 2,385.4 | -97.1 | 265.4 | -261.7 | 0.30 | -0.20 | 0.60 | |
| 2,442.0 | 21.61 | 110.23 | 2,399.3 | -99.0 | 270.5 | -266.9 | 0.32 | -0.20 | 0.67 | |
| 2,457.0 | 21.58 | 110.32 | 2,413.2 | -100.9 | 275.7 | -272.0 | 0.30 | -0.20 | 0.60 | |
| 2,472.0 | 21.54 | 110.41 | 2,427.2 | -102.8 | 280.9 | -277.1 | 0.35 | -0.27 | 0.60 | |
| 2,487.0 | 21.49 | 110.48 | 2,441.1 | -104.7 | 286.0 | -282.1 | 0.37 | -0.33 | 0.47 | |
| 2,502.0 | 21.43 | 110.53 | 2,455.1 | -106.7 | 291.2 | -287.2 | 0.42 | -0.40 | 0.33 | |
| 2,517.0 | 21.36 | 110.55 | 2,469.1 | -108.6 | 296.3 | -292.3 | 0.47 | -0.47 | 0.13 | |
| 2,532.0 | 21.29 | 110.57 | 2,483.0 | -110.5 | 301.4 | -297.3 | 0.47 | -0.47 | 0.13 | |
| 2,547.0 | 21.23 | 110.58 | 2,497.0 | -112.4 | 306.5 | -302.3 | 0.40 | -0.40 | 0.07 | |
| 2,562.0 | 21.16 | 110.58 | 2,511.0 | -114.3 | 311.6 | -307.3 | 0.47 | -0.47 | 0.00 | |
| 2,577.0 | 21.11 | 110.59 | 2,525.0 | -116.2 | 316.6 | -312.3 | 0.33 | -0.33 | 0.07 | |
| 2,591.8 | 21.09 | 110.59 | 2,538.8 | -118.1 | 321.6 | -317.3 | 0.13 | -0.13 | 0.00 | |
| 2,606.7 | 21.07 | 110.60 | 2,552.7 | -120.0 | 326.6 | -322.2 | 0.14 | -0.13 | 0.07 | |
| 2,621.5 | 21.06 | 110.60 | 2,566.5 | -121.8 | 331.6 | -327.1 | 0.07 | -0.07 | 0.00 | |
| 2,636.3 | 21.06 | 110.59 | 2,580.4 | -123.7 | 336.6 | -332.0 | 0.02 | 0.00 | -0.07 | |
| 2,651.2 | 21.05 | 110.57 | 2,594.2 | -125.6 | 341.6 | -336.9 | 0.08 | -0.07 | -0.13 | |
| 2,666.0 | 21.05 | 110.54 | 2,608.1 | -127.5 | 346.6 | -341.9 | 0.07 | 0.00 | -0.20 | |
| 2,681.0 | 21.03 | 110.49 | 2,622.1 | -129.4 | 351.6 | -346.8 | 0.18 | -0.13 | -0.33 | |
| 2,696.0 | 21.01 | 110.42 | 2,636.1 | -131.2 | 356.7 | -351.8 | 0.21 | -0.13 | -0.47 | |

Ensign Energy Services Inc.

Survey Report

| | | | |
|------------------|---|-------------------------------------|---------------------------------------|
| Company: | Bayswater Exploration & Production, LLC | Local Co-ordinate Reference: | Well Groves Farm O-34-33HC |
| Project: | SEC.34-T7N-R65W | TVD Reference: | RKB @ 4867.0ft (Ensign 153 RKB - 23') |
| Site: | Groves Farm 34-L Pad Sec.34-T7N-R65W | MD Reference: | RKB @ 4867.0ft (Ensign 153 RKB - 23') |
| Well: | Groves Farm O-34-33HC | North Reference: | True |
| Wellbore: | Groves Farms O-34-33HC Wellbore #1 | Survey Calculation Method: | Minimum Curvature |
| Design: | Groves Farms O-34-33HC Wellbore #1 | Database: | US_EDM |

Survey

| Measured Depth (ft) | Inclination (°) | Azimuth (°) | Vertical Depth (ft) | +N/-S (ft) | +E/-W (ft) | Vertical Section (ft) | Dogleg Rate (°/100usft) | Build Rate (°/100usft) | Turn Rate (°/100usft) |
|---------------------|-----------------|-------------|---------------------|------------|------------|-----------------------|-------------------------|------------------------|-----------------------|
| 2,711.0 | 20.99 | 110.33 | 2,650.1 | -133.1 | 361.7 | -356.8 | 0.25 | -0.13 | -0.60 |
| 2,726.0 | 20.96 | 110.24 | 2,664.1 | -135.0 | 366.8 | -361.7 | 0.29 | -0.20 | -0.60 |
| 2,741.0 | 20.92 | 110.13 | 2,678.1 | -136.8 | 371.8 | -366.7 | 0.37 | -0.27 | -0.73 |
| 2,756.0 | 20.86 | 110.00 | 2,692.1 | -138.7 | 376.8 | -371.7 | 0.51 | -0.40 | -0.87 |
| 2,771.0 | 20.79 | 109.84 | 2,706.1 | -140.5 | 381.8 | -376.6 | 0.60 | -0.47 | -1.07 |
| 2,786.0 | 20.71 | 109.67 | 2,720.1 | -142.3 | 386.8 | -381.5 | 0.67 | -0.53 | -1.13 |
| 2,801.0 | 20.62 | 109.48 | 2,734.2 | -144.0 | 391.8 | -386.5 | 0.75 | -0.60 | -1.27 |
| 2,816.0 | 20.53 | 109.30 | 2,748.2 | -145.8 | 396.8 | -391.4 | 0.73 | -0.60 | -1.20 |
| 2,831.0 | 20.44 | 109.12 | 2,762.3 | -147.5 | 401.7 | -396.3 | 0.73 | -0.60 | -1.20 |
| 2,846.0 | 19.90 | 106.43 | 2,776.3 | -149.1 | 406.7 | -401.1 | 7.15 | -3.60 | -17.93 |
| 2,860.8 | 19.82 | 106.28 | 2,790.3 | -150.5 | 411.5 | -405.9 | 0.64 | -0.54 | -1.01 |
| 2,875.7 | 19.74 | 106.12 | 2,804.3 | -151.9 | 416.3 | -410.7 | 0.65 | -0.54 | -1.08 |
| 2,890.5 | 19.66 | 105.97 | 2,818.2 | -153.3 | 421.1 | -415.4 | 0.64 | -0.54 | -1.01 |
| 2,905.3 | 19.59 | 105.82 | 2,832.2 | -154.7 | 425.9 | -420.2 | 0.58 | -0.47 | -1.01 |
| 2,920.2 | 19.52 | 105.67 | 2,846.2 | -156.0 | 430.7 | -424.9 | 0.58 | -0.47 | -1.01 |
| 2,935.0 | 19.46 | 105.52 | 2,860.2 | -157.3 | 435.5 | -429.6 | 0.53 | -0.40 | -1.01 |
| 2,948.9 | 19.41 | 105.38 | 2,873.2 | -158.6 | 439.9 | -434.0 | 0.49 | -0.36 | -1.01 |
| 2,962.7 | 19.37 | 105.25 | 2,886.3 | -159.8 | 444.4 | -438.4 | 0.42 | -0.29 | -0.94 |
| 2,976.6 | 19.33 | 105.12 | 2,899.4 | -161.0 | 448.8 | -442.8 | 0.42 | -0.29 | -0.94 |
| 2,990.5 | 19.30 | 104.99 | 2,912.5 | -162.2 | 453.2 | -447.2 | 0.38 | -0.22 | -0.94 |
| 3,004.4 | 19.27 | 104.87 | 2,925.6 | -163.4 | 457.7 | -451.6 | 0.36 | -0.22 | -0.86 |
| 3,018.2 | 19.24 | 104.75 | 2,938.7 | -164.5 | 462.1 | -456.0 | 0.36 | -0.22 | -0.87 |
| 3,032.1 | 19.21 | 104.63 | 2,951.8 | -165.7 | 466.5 | -460.3 | 0.36 | -0.22 | -0.86 |
| 3,046.0 | 19.19 | 104.53 | 2,964.9 | -166.8 | 470.9 | -464.7 | 0.28 | -0.14 | -0.72 |
| 3,061.0 | 19.17 | 104.43 | 2,979.1 | -168.1 | 475.7 | -469.4 | 0.26 | -0.13 | -0.67 |
| 3,076.0 | 19.14 | 104.34 | 2,993.2 | -169.3 | 480.5 | -474.1 | 0.28 | -0.20 | -0.60 |
| 3,091.0 | 19.12 | 104.26 | 3,007.4 | -170.5 | 485.2 | -478.9 | 0.22 | -0.13 | -0.53 |
| 3,106.0 | 19.08 | 104.19 | 3,021.6 | -171.7 | 490.0 | -483.6 | 0.31 | -0.27 | -0.47 |
| 3,121.0 | 19.04 | 104.12 | 3,035.8 | -172.9 | 494.7 | -488.3 | 0.31 | -0.27 | -0.47 |
| 3,136.0 | 18.98 | 104.06 | 3,050.0 | -174.1 | 499.5 | -493.0 | 0.42 | -0.40 | -0.40 |
| 3,150.8 | 18.88 | 104.00 | 3,064.0 | -175.3 | 504.1 | -497.6 | 0.69 | -0.67 | -0.40 |
| 3,165.7 | 18.77 | 103.94 | 3,078.0 | -176.4 | 508.8 | -502.2 | 0.75 | -0.74 | -0.40 |
| 3,180.5 | 18.65 | 103.89 | 3,092.1 | -177.6 | 513.4 | -506.8 | 0.82 | -0.81 | -0.34 |
| 3,195.3 | 18.52 | 103.84 | 3,106.1 | -178.7 | 518.0 | -511.3 | 0.88 | -0.88 | -0.34 |
| 3,210.2 | 18.39 | 103.79 | 3,120.2 | -179.8 | 522.5 | -515.8 | 0.88 | -0.88 | -0.34 |
| 3,225.0 | 18.26 | 103.74 | 3,134.3 | -180.9 | 527.1 | -520.3 | 0.88 | -0.88 | -0.34 |
| 3,240.0 | 18.15 | 103.68 | 3,148.5 | -182.0 | 531.6 | -524.8 | 0.74 | -0.73 | -0.40 |
| 3,255.0 | 18.04 | 103.63 | 3,162.8 | -183.1 | 536.2 | -529.3 | 0.74 | -0.73 | -0.33 |
| 3,270.0 | 17.93 | 103.57 | 3,177.1 | -184.2 | 540.7 | -533.8 | 0.74 | -0.73 | -0.40 |
| 3,285.0 | 17.83 | 103.50 | 3,191.3 | -185.3 | 545.1 | -538.2 | 0.68 | -0.67 | -0.47 |
| 3,300.0 | 17.73 | 103.43 | 3,205.6 | -186.4 | 549.6 | -542.6 | 0.68 | -0.67 | -0.47 |
| 3,315.0 | 17.64 | 103.35 | 3,219.9 | -187.4 | 554.0 | -547.0 | 0.62 | -0.60 | -0.53 |
| 3,329.8 | 17.56 | 103.25 | 3,234.0 | -188.5 | 558.4 | -551.4 | 0.58 | -0.54 | -0.67 |

Ensign Energy Services Inc.

Survey Report

| | | | |
|------------------|---|-------------------------------------|---------------------------------------|
| Company: | Bayswater Exploration & Production, LLC | Local Co-ordinate Reference: | Well Groves Farm O-34-33HC |
| Project: | SEC.34-T7N-R65W | TVD Reference: | RKB @ 4867.0ft (Ensign 153 RKB - 23') |
| Site: | Groves Farm 34-L Pad Sec.34-T7N-R65W | MD Reference: | RKB @ 4867.0ft (Ensign 153 RKB - 23') |
| Well: | Groves Farm O-34-33HC | North Reference: | True |
| Wellbore: | Groves Farms O-34-33HC Wellbore #1 | Survey Calculation Method: | Minimum Curvature |
| Design: | Groves Farms O-34-33HC Wellbore #1 | Database: | US_EDM |

| Survey | | | | | | | | | | |
|---------------------|-----------------|-------------|---------------------|------------|------------|-----------------------|-------------------------|------------------------|-----------------------|--|
| Measured Depth (ft) | Inclination (°) | Azimuth (°) | Vertical Depth (ft) | +N/-S (ft) | +E/-W (ft) | Vertical Section (ft) | Dogleg Rate (°/100usft) | Build Rate (°/100usft) | Turn Rate (°/100usft) | |
| 3,344.7 | 17.48 | 103.15 | 3,248.2 | -189.5 | 562.7 | -555.7 | 0.58 | -0.54 | -0.67 | |
| 3,359.5 | 17.41 | 103.04 | 3,262.3 | -190.5 | 567.1 | -560.0 | 0.52 | -0.47 | -0.74 | |
| 3,374.3 | 17.34 | 102.94 | 3,276.5 | -191.5 | 571.4 | -564.2 | 0.51 | -0.47 | -0.67 | |
| 3,389.2 | 17.27 | 102.85 | 3,290.7 | -192.5 | 575.7 | -568.5 | 0.51 | -0.47 | -0.61 | |
| 3,404.0 | 17.20 | 102.80 | 3,304.8 | -193.4 | 580.0 | -572.7 | 0.48 | -0.47 | -0.34 | |
| 3,419.0 | 17.12 | 102.79 | 3,319.2 | -194.4 | 584.3 | -577.0 | 0.53 | -0.53 | -0.07 | |
| 3,434.0 | 17.05 | 102.81 | 3,333.5 | -195.4 | 588.6 | -581.3 | 0.47 | -0.47 | 0.13 | |
| 3,449.0 | 16.97 | 102.82 | 3,347.8 | -196.4 | 592.9 | -585.5 | 0.53 | -0.53 | 0.07 | |
| 3,464.0 | 16.89 | 102.80 | 3,362.2 | -197.3 | 597.1 | -589.7 | 0.53 | -0.53 | -0.13 | |
| 3,479.0 | 16.80 | 102.70 | 3,376.6 | -198.3 | 601.4 | -593.9 | 0.63 | -0.60 | -0.67 | |
| 3,494.0 | 16.70 | 102.49 | 3,390.9 | -199.2 | 605.6 | -598.1 | 0.78 | -0.67 | -1.40 | |
| 3,509.0 | 16.54 | 105.56 | 3,405.3 | -200.3 | 609.7 | -602.3 | 5.95 | -1.07 | 20.47 | |
| 3,524.0 | 16.40 | 104.95 | 3,419.7 | -201.4 | 613.8 | -606.3 | 1.48 | -0.93 | -4.07 | |
| 3,539.0 | 16.26 | 104.25 | 3,434.1 | -202.5 | 617.9 | -610.4 | 1.61 | -0.93 | -4.67 | |
| 3,554.0 | 16.10 | 103.53 | 3,448.5 | -203.5 | 622.0 | -614.4 | 1.71 | -1.07 | -4.80 | |
| 3,569.0 | 15.95 | 102.85 | 3,462.9 | -204.4 | 626.0 | -618.4 | 1.60 | -1.00 | -4.53 | |
| 3,584.0 | 15.79 | 102.30 | 3,477.3 | -205.3 | 630.0 | -622.3 | 1.46 | -1.07 | -3.67 | |
| 3,598.8 | 15.63 | 102.04 | 3,491.6 | -206.2 | 633.9 | -626.2 | 1.18 | -1.08 | -1.75 | |
| 3,613.7 | 15.46 | 101.94 | 3,505.9 | -207.0 | 637.8 | -630.1 | 1.16 | -1.15 | -0.67 | |
| 3,628.5 | 15.31 | 101.96 | 3,520.2 | -207.8 | 641.7 | -633.9 | 1.01 | -1.01 | 0.13 | |
| 3,643.3 | 15.16 | 102.07 | 3,534.5 | -208.6 | 645.5 | -637.7 | 1.03 | -1.01 | 0.74 | |
| 3,658.2 | 15.10 | 102.37 | 3,548.8 | -209.4 | 649.3 | -641.4 | 0.66 | -0.40 | 2.02 | |
| 3,673.0 | 16.07 | 103.84 | 3,563.1 | -210.3 | 653.2 | -645.3 | 7.06 | 6.54 | 9.91 | |
| 3,687.8 | 15.98 | 104.22 | 3,577.4 | -211.3 | 657.1 | -649.2 | 0.93 | -0.61 | 2.56 | |
| 3,702.7 | 15.90 | 104.66 | 3,591.6 | -212.3 | 661.1 | -653.1 | 0.98 | -0.54 | 2.96 | |
| 3,717.5 | 15.83 | 105.13 | 3,605.9 | -213.4 | 665.0 | -657.0 | 0.99 | -0.47 | 3.17 | |
| 3,732.3 | 15.77 | 105.59 | 3,620.2 | -214.5 | 668.9 | -660.9 | 0.94 | -0.40 | 3.10 | |
| 3,747.2 | 15.71 | 105.99 | 3,634.5 | -215.6 | 672.8 | -664.7 | 0.84 | -0.40 | 2.70 | |
| 3,762.0 | 16.13 | 109.15 | 3,648.7 | -216.8 | 676.6 | -668.5 | 6.49 | 2.83 | 21.31 | |
| 3,777.0 | 16.87 | 111.17 | 3,663.1 | -218.2 | 680.6 | -672.5 | 6.24 | 4.93 | 13.47 | |
| 3,792.0 | 16.78 | 111.27 | 3,677.5 | -219.8 | 684.7 | -676.5 | 0.63 | -0.60 | 0.67 | |
| 3,807.0 | 16.70 | 111.34 | 3,691.8 | -221.4 | 688.7 | -680.4 | 0.55 | -0.53 | 0.47 | |
| 3,822.0 | 16.62 | 111.38 | 3,706.2 | -223.0 | 692.7 | -684.4 | 0.54 | -0.53 | 0.27 | |
| 3,837.0 | 16.63 | 111.58 | 3,720.6 | -224.5 | 696.7 | -688.3 | 0.39 | 0.07 | 1.33 | |
| 3,852.0 | 17.82 | 113.76 | 3,734.9 | -226.2 | 700.8 | -692.3 | 9.02 | 7.93 | 14.53 | |
| 3,866.8 | 18.58 | 113.45 | 3,749.0 | -228.1 | 705.0 | -696.5 | 5.17 | 5.12 | -2.09 | |
| 3,881.7 | 18.57 | 113.41 | 3,763.0 | -230.0 | 709.4 | -700.8 | 0.11 | -0.07 | -0.27 | |
| 3,896.5 | 18.57 | 113.39 | 3,777.1 | -231.9 | 713.7 | -705.0 | 0.04 | 0.00 | -0.13 | |
| 3,911.3 | 18.58 | 113.38 | 3,791.2 | -233.7 | 718.1 | -709.3 | 0.07 | 0.07 | -0.07 | |
| 3,926.2 | 18.59 | 113.44 | 3,805.2 | -235.6 | 722.4 | -713.6 | 0.15 | 0.07 | 0.40 | |
| 3,941.0 | 18.61 | 113.59 | 3,819.3 | -237.5 | 726.7 | -717.9 | 0.35 | 0.13 | 1.01 | |
| 3,956.0 | 18.64 | 113.90 | 3,833.5 | -239.4 | 731.1 | -722.2 | 0.69 | 0.20 | 2.07 | |
| 3,971.0 | 18.67 | 114.29 | 3,847.7 | -241.4 | 735.5 | -726.5 | 0.86 | 0.20 | 2.60 | |
| 3,986.0 | 18.70 | 114.72 | 3,861.9 | -243.4 | 739.9 | -730.8 | 0.94 | 0.20 | 2.87 | |

Ensign Energy Services Inc.

Survey Report

| | | | |
|------------------|---|-------------------------------------|---------------------------------------|
| Company: | Bayswater Exploration & Production, LLC | Local Co-ordinate Reference: | Well Groves Farm O-34-33HC |
| Project: | SEC.34-T7N-R65W | TVD Reference: | RKB @ 4867.0ft (Ensign 153 RKB - 23') |
| Site: | Groves Farm 34-L Pad Sec.34-T7N-R65W | MD Reference: | RKB @ 4867.0ft (Ensign 153 RKB - 23') |
| Well: | Groves Farm O-34-33HC | North Reference: | True |
| Wellbore: | Groves Farms O-34-33HC Wellbore #1 | Survey Calculation Method: | Minimum Curvature |
| Design: | Groves Farms O-34-33HC Wellbore #1 | Database: | US_EDM |

| Survey | | | | | | | | | | |
|---------------------|-----------------|-------------|---------------------|------------|------------|-----------------------|-------------------------|------------------------|-----------------------|--|
| Measured Depth (ft) | Inclination (°) | Azimuth (°) | Vertical Depth (ft) | +N/-S (ft) | +E/-W (ft) | Vertical Section (ft) | Dogleg Rate (°/100usft) | Build Rate (°/100usft) | Turn Rate (°/100usft) | |
| 4,001.0 | 18.74 | 115.15 | 3,876.1 | -245.4 | 744.2 | -735.1 | 0.96 | 0.27 | 2.87 | |
| 4,016.0 | 18.78 | 115.54 | 3,890.3 | -247.5 | 748.6 | -739.3 | 0.88 | 0.27 | 2.60 | |
| 4,031.0 | 18.92 | 117.92 | 3,904.5 | -249.6 | 752.9 | -743.6 | 5.21 | 0.93 | 15.87 | |
| 4,045.8 | 18.97 | 118.17 | 3,918.5 | -251.9 | 757.2 | -747.8 | 0.64 | 0.34 | 1.69 | |
| 4,060.7 | 19.02 | 118.37 | 3,932.6 | -254.2 | 761.4 | -751.9 | 0.55 | 0.34 | 1.35 | |
| 4,075.5 | 19.08 | 118.54 | 3,946.6 | -256.5 | 765.7 | -756.1 | 0.55 | 0.40 | 1.15 | |
| 4,090.3 | 19.14 | 118.67 | 3,960.6 | -258.8 | 769.9 | -760.3 | 0.50 | 0.40 | 0.88 | |
| 4,105.2 | 19.20 | 118.75 | 3,974.6 | -261.2 | 774.2 | -764.5 | 0.44 | 0.40 | 0.54 | |
| 4,120.0 | 19.24 | 118.75 | 3,988.6 | -263.5 | 778.5 | -768.7 | 0.27 | 0.27 | 0.00 | |
| 4,135.0 | 19.26 | 118.65 | 4,002.8 | -265.9 | 782.8 | -772.9 | 0.26 | 0.13 | -0.67 | |
| 4,150.0 | 19.28 | 118.49 | 4,017.0 | -268.3 | 787.2 | -777.2 | 0.38 | 0.13 | -1.07 | |
| 4,165.0 | 19.29 | 118.29 | 4,031.1 | -270.6 | 791.5 | -781.4 | 0.45 | 0.07 | -1.33 | |
| 4,180.0 | 19.29 | 118.07 | 4,045.3 | -273.0 | 795.9 | -785.7 | 0.48 | 0.00 | -1.47 | |
| 4,195.0 | 19.30 | 117.84 | 4,059.4 | -275.3 | 800.3 | -790.0 | 0.51 | 0.07 | -1.53 | |
| 4,210.0 | 19.31 | 117.63 | 4,073.6 | -277.6 | 804.7 | -794.3 | 0.47 | 0.07 | -1.40 | |
| 4,224.8 | 19.33 | 117.46 | 4,087.6 | -279.9 | 809.0 | -798.6 | 0.40 | 0.13 | -1.15 | |
| 4,239.7 | 19.35 | 117.31 | 4,101.6 | -282.1 | 813.4 | -802.9 | 0.36 | 0.13 | -1.01 | |
| 4,254.5 | 19.38 | 117.17 | 4,115.6 | -284.4 | 817.8 | -807.2 | 0.37 | 0.20 | -0.94 | |
| 4,269.3 | 19.40 | 117.04 | 4,129.6 | -286.6 | 822.1 | -811.5 | 0.32 | 0.13 | -0.88 | |
| 4,284.2 | 19.42 | 116.91 | 4,143.6 | -288.9 | 826.5 | -815.8 | 0.32 | 0.13 | -0.88 | |
| 4,299.0 | 19.42 | 116.78 | 4,157.5 | -291.1 | 830.9 | -820.1 | 0.29 | 0.00 | -0.88 | |
| 4,313.8 | 19.41 | 116.66 | 4,171.5 | -293.3 | 835.3 | -824.4 | 0.28 | -0.07 | -0.81 | |
| 4,328.7 | 19.39 | 116.53 | 4,185.5 | -295.5 | 839.8 | -828.7 | 0.32 | -0.13 | -0.88 | |
| 4,343.5 | 19.35 | 116.42 | 4,199.5 | -297.7 | 844.2 | -833.1 | 0.37 | -0.27 | -0.74 | |
| 4,358.3 | 19.31 | 116.34 | 4,213.5 | -299.9 | 848.6 | -837.4 | 0.32 | -0.27 | -0.54 | |
| 4,373.2 | 19.26 | 116.29 | 4,227.5 | -302.0 | 852.9 | -841.7 | 0.35 | -0.34 | -0.34 | |
| 4,388.0 | 19.42 | 115.76 | 4,241.5 | -304.2 | 857.4 | -846.0 | 1.60 | 1.08 | -3.57 | |
| 4,402.8 | 19.96 | 114.43 | 4,255.5 | -306.3 | 861.9 | -850.5 | 4.73 | 3.64 | -8.97 | |
| 4,417.7 | 19.86 | 114.63 | 4,269.4 | -308.4 | 866.5 | -855.0 | 0.82 | -0.67 | 1.35 | |
| 4,432.5 | 19.75 | 114.86 | 4,283.4 | -310.5 | 871.0 | -859.5 | 0.91 | -0.74 | 1.55 | |
| 4,447.3 | 19.64 | 115.07 | 4,297.3 | -312.6 | 875.6 | -863.9 | 0.88 | -0.74 | 1.42 | |
| 4,462.2 | 19.53 | 115.22 | 4,311.3 | -314.7 | 880.1 | -868.4 | 0.82 | -0.74 | 1.01 | |
| 4,477.0 | 19.42 | 115.24 | 4,325.3 | -316.9 | 884.6 | -872.8 | 0.74 | -0.74 | 0.13 | |
| 4,492.0 | 19.31 | 115.02 | 4,339.5 | -319.0 | 889.1 | -877.2 | 0.88 | -0.73 | -1.47 | |
| 4,507.0 | 19.21 | 114.65 | 4,353.6 | -321.0 | 893.5 | -881.6 | 1.05 | -0.67 | -2.47 | |
| 4,522.0 | 19.11 | 114.21 | 4,367.8 | -323.1 | 898.0 | -886.0 | 1.17 | -0.67 | -2.93 | |
| 4,537.0 | 19.02 | 113.76 | 4,382.0 | -325.1 | 902.5 | -890.4 | 1.15 | -0.60 | -3.00 | |
| 4,552.0 | 18.94 | 113.33 | 4,396.1 | -327.0 | 907.0 | -894.8 | 1.07 | -0.53 | -2.87 | |
| 4,567.0 | 19.20 | 111.99 | 4,410.3 | -328.9 | 911.5 | -899.3 | 3.39 | 1.73 | -8.93 | |
| 4,581.8 | 19.12 | 111.76 | 4,424.3 | -330.7 | 916.0 | -903.7 | 0.74 | -0.54 | -1.55 | |
| 4,596.7 | 19.04 | 111.59 | 4,438.4 | -332.5 | 920.5 | -908.1 | 0.66 | -0.54 | -1.15 | |
| 4,611.5 | 18.97 | 111.44 | 4,452.4 | -334.3 | 925.0 | -912.6 | 0.58 | -0.47 | -1.01 | |
| 4,626.3 | 18.88 | 111.32 | 4,466.4 | -336.0 | 929.5 | -917.0 | 0.66 | -0.61 | -0.81 | |

Ensign Energy Services Inc.

Survey Report

| | | | |
|------------------|---|-------------------------------------|---------------------------------------|
| Company: | Bayswater Exploration & Production, LLC | Local Co-ordinate Reference: | Well Groves Farm O-34-33HC |
| Project: | SEC.34-T7N-R65W | TVD Reference: | RKB @ 4867.0ft (Ensign 153 RKB - 23') |
| Site: | Groves Farm 34-L Pad Sec.34-T7N-R65W | MD Reference: | RKB @ 4867.0ft (Ensign 153 RKB - 23') |
| Well: | Groves Farm O-34-33HC | North Reference: | True |
| Wellbore: | Groves Farms O-34-33HC Wellbore #1 | Survey Calculation Method: | Minimum Curvature |
| Design: | Groves Farms O-34-33HC Wellbore #1 | Database: | US_EDM |

| Survey | | | | | | | | | |
|---------------------|-----------------|-------------|---------------------|------------|------------|-----------------------|-------------------------|------------------------|-----------------------|
| Measured Depth (ft) | Inclination (°) | Azimuth (°) | Vertical Depth (ft) | +N/-S (ft) | +E/-W (ft) | Vertical Section (ft) | Dogleg Rate (°/100usft) | Build Rate (°/100usft) | Turn Rate (°/100usft) |
| 4,641.2 | 18.80 | 111.21 | 4,480.5 | -337.8 | 934.0 | -921.4 | 0.59 | -0.54 | -0.74 |
| 4,656.0 | 18.71 | 111.10 | 4,494.5 | -339.5 | 938.4 | -925.8 | 0.65 | -0.61 | -0.74 |
| 4,670.8 | 18.60 | 110.97 | 4,508.5 | -341.2 | 942.8 | -930.1 | 0.79 | -0.74 | -0.88 |
| 4,685.7 | 18.49 | 110.84 | 4,522.6 | -342.9 | 947.2 | -934.5 | 0.79 | -0.74 | -0.88 |
| 4,700.5 | 18.38 | 110.70 | 4,536.7 | -344.5 | 951.6 | -938.8 | 0.80 | -0.74 | -0.94 |
| 4,715.3 | 18.27 | 110.56 | 4,550.8 | -346.2 | 956.0 | -943.1 | 0.80 | -0.74 | -0.94 |
| 4,730.2 | 18.18 | 110.41 | 4,564.9 | -347.8 | 960.3 | -947.4 | 0.68 | -0.61 | -1.01 |
| 4,745.0 | 18.11 | 110.25 | 4,578.9 | -349.4 | 964.7 | -951.7 | 0.58 | -0.47 | -1.08 |
| 4,759.7 | 18.08 | 110.07 | 4,592.9 | -351.0 | 969.0 | -955.9 | 0.43 | -0.20 | -1.23 |
| 4,774.3 | 18.07 | 109.88 | 4,606.8 | -352.5 | 973.2 | -960.1 | 0.41 | -0.07 | -1.30 |
| 4,789.0 | 18.07 | 109.70 | 4,620.8 | -354.1 | 977.5 | -964.3 | 0.38 | 0.00 | -1.23 |
| 4,803.7 | 18.06 | 109.53 | 4,634.7 | -355.6 | 981.8 | -968.6 | 0.37 | -0.07 | -1.16 |
| 4,818.3 | 18.13 | 109.19 | 4,648.7 | -357.1 | 986.1 | -972.8 | 0.86 | 0.48 | -2.32 |
| 4,833.0 | 18.53 | 108.25 | 4,662.6 | -358.6 | 990.5 | -977.1 | 3.39 | 2.73 | -6.41 |
| 4,847.8 | 18.45 | 108.16 | 4,676.6 | -360.1 | 994.9 | -981.5 | 0.57 | -0.54 | -0.61 |
| 4,862.7 | 18.35 | 108.09 | 4,690.7 | -361.5 | 999.4 | -985.9 | 0.69 | -0.67 | -0.47 |
| 4,877.5 | 18.25 | 108.05 | 4,704.8 | -363.0 | 1,003.8 | -990.3 | 0.68 | -0.67 | -0.27 |
| 4,892.3 | 18.15 | 108.05 | 4,718.9 | -364.4 | 1,008.2 | -994.6 | 0.67 | -0.67 | 0.00 |
| 4,907.2 | 18.05 | 108.11 | 4,733.0 | -365.8 | 1,012.6 | -999.0 | 0.69 | -0.67 | 0.40 |
| 4,922.0 | 17.97 | 108.24 | 4,747.1 | -367.3 | 1,016.9 | -1,003.3 | 0.60 | -0.54 | 0.88 |
| 4,936.8 | 17.93 | 108.49 | 4,761.2 | -368.7 | 1,021.3 | -1,007.6 | 0.59 | -0.27 | 1.69 |
| 4,951.7 | 17.90 | 108.82 | 4,775.3 | -370.2 | 1,025.6 | -1,011.8 | 0.71 | -0.20 | 2.22 |
| 4,966.5 | 17.87 | 109.18 | 4,789.4 | -371.6 | 1,029.9 | -1,016.1 | 0.77 | -0.20 | 2.43 |
| 4,981.3 | 17.84 | 109.55 | 4,803.6 | -373.2 | 1,034.2 | -1,020.3 | 0.79 | -0.20 | 2.49 |
| 4,996.2 | 17.85 | 109.77 | 4,817.7 | -374.7 | 1,038.5 | -1,024.5 | 0.46 | 0.07 | 1.48 |
| 5,011.0 | 18.48 | 107.74 | 4,831.8 | -376.2 | 1,042.9 | -1,028.9 | 6.02 | 4.25 | -13.69 |
| 5,026.0 | 18.52 | 107.94 | 4,846.0 | -377.6 | 1,047.4 | -1,033.3 | 0.50 | 0.27 | 1.33 |
| 5,041.0 | 18.40 | 108.29 | 4,860.2 | -379.1 | 1,051.9 | -1,037.8 | 1.09 | -0.80 | 2.33 |
| 5,056.0 | 18.28 | 108.63 | 4,874.5 | -380.6 | 1,056.4 | -1,042.2 | 1.07 | -0.80 | 2.27 |
| 5,071.0 | 18.16 | 108.93 | 4,888.7 | -382.1 | 1,060.8 | -1,046.6 | 1.02 | -0.80 | 2.00 |
| 5,086.0 | 18.28 | 108.91 | 4,903.0 | -383.6 | 1,065.3 | -1,051.0 | 0.80 | 0.80 | -0.13 |
| 5,101.0 | 19.83 | 107.41 | 4,917.1 | -385.2 | 1,069.9 | -1,055.6 | 10.84 | 10.33 | -10.00 |
| 5,115.8 | 19.75 | 107.42 | 4,931.1 | -386.7 | 1,074.7 | -1,060.3 | 0.54 | -0.54 | 0.07 |
| 5,130.7 | 19.67 | 107.38 | 4,945.1 | -388.2 | 1,079.5 | -1,065.0 | 0.55 | -0.54 | -0.27 |
| 5,145.5 | 19.59 | 107.30 | 4,959.0 | -389.6 | 1,084.2 | -1,069.7 | 0.57 | -0.54 | -0.54 |
| 5,160.3 | 19.50 | 107.19 | 4,973.0 | -391.1 | 1,089.0 | -1,074.4 | 0.66 | -0.61 | -0.74 |
| 5,175.2 | 19.39 | 107.08 | 4,987.0 | -392.6 | 1,093.7 | -1,079.1 | 0.78 | -0.74 | -0.74 |
| 5,190.0 | 19.24 | 106.96 | 5,001.0 | -394.0 | 1,098.4 | -1,083.7 | 1.05 | -1.01 | -0.81 |
| 5,205.0 | 19.03 | 106.84 | 5,015.2 | -395.4 | 1,103.1 | -1,088.4 | 1.42 | -1.40 | -0.80 |
| 5,220.0 | 18.79 | 106.73 | 5,029.4 | -396.8 | 1,107.7 | -1,093.0 | 1.62 | -1.60 | -0.73 |
| 5,235.0 | 18.53 | 106.64 | 5,043.6 | -398.2 | 1,112.3 | -1,097.5 | 1.74 | -1.73 | -0.60 |
| 5,250.0 | 18.28 | 106.58 | 5,057.8 | -399.6 | 1,116.9 | -1,102.0 | 1.67 | -1.67 | -0.40 |
| 5,265.0 | 18.04 | 106.57 | 5,072.1 | -400.9 | 1,121.4 | -1,106.4 | 1.60 | -1.60 | -0.07 |

Ensign Energy Services Inc.

Survey Report

| | | | |
|------------------|---|-------------------------------------|---------------------------------------|
| Company: | Bayswater Exploration & Production, LLC | Local Co-ordinate Reference: | Well Groves Farm O-34-33HC |
| Project: | SEC.34-T7N-R65W | TVD Reference: | RKB @ 4867.0ft (Ensign 153 RKB - 23') |
| Site: | Groves Farm 34-L Pad Sec.34-T7N-R65W | MD Reference: | RKB @ 4867.0ft (Ensign 153 RKB - 23') |
| Well: | Groves Farm O-34-33HC | North Reference: | True |
| Wellbore: | Groves Farms O-34-33HC Wellbore #1 | Survey Calculation Method: | Minimum Curvature |
| Design: | Groves Farms O-34-33HC Wellbore #1 | Database: | US_EDM |

| Survey | | | | | | | | | | |
|---------------------|-----------------|-------------|---------------------|------------|------------|-----------------------|-------------------------|------------------------|-----------------------|--|
| Measured Depth (ft) | Inclination (°) | Azimuth (°) | Vertical Depth (ft) | +N/-S (ft) | +E/-W (ft) | Vertical Section (ft) | Dogleg Rate (°/100usft) | Build Rate (°/100usft) | Turn Rate (°/100usft) | |
| 5,280.0 | 17.84 | 106.64 | 5,086.3 | -402.2 | 1,125.8 | -1,110.8 | 1.34 | -1.33 | 0.47 | |
| 5,295.0 | 17.70 | 106.87 | 5,100.6 | -403.5 | 1,130.2 | -1,115.1 | 1.04 | -0.93 | 1.53 | |
| 5,310.0 | 17.61 | 107.16 | 5,114.9 | -404.9 | 1,134.5 | -1,119.4 | 0.84 | -0.60 | 1.93 | |
| 5,325.0 | 17.53 | 107.48 | 5,129.2 | -406.2 | 1,138.8 | -1,123.7 | 0.84 | -0.53 | 2.13 | |
| 5,340.0 | 17.44 | 107.78 | 5,143.5 | -407.6 | 1,143.1 | -1,128.0 | 0.85 | -0.60 | 2.00 | |
| 5,355.0 | 17.44 | 107.82 | 5,157.8 | -409.0 | 1,147.4 | -1,132.2 | 0.08 | 0.00 | 0.27 | |
| 5,370.0 | 18.89 | 105.24 | 5,172.1 | -410.3 | 1,151.9 | -1,136.6 | 11.05 | 9.67 | -17.20 | |
| 5,384.8 | 18.68 | 105.23 | 5,186.1 | -411.5 | 1,156.5 | -1,141.2 | 1.42 | -1.42 | -0.07 | |
| 5,399.7 | 18.43 | 105.15 | 5,200.2 | -412.8 | 1,161.1 | -1,145.7 | 1.69 | -1.68 | -0.54 | |
| 5,414.5 | 18.17 | 105.03 | 5,214.3 | -414.0 | 1,165.6 | -1,150.1 | 1.77 | -1.75 | -0.81 | |
| 5,429.3 | 17.89 | 104.89 | 5,228.4 | -415.2 | 1,170.0 | -1,154.5 | 1.91 | -1.89 | -0.94 | |
| 5,444.2 | 17.63 | 104.74 | 5,242.5 | -416.3 | 1,174.4 | -1,158.9 | 1.78 | -1.75 | -1.01 | |
| 5,459.0 | 18.50 | 106.02 | 5,256.6 | -417.6 | 1,178.8 | -1,163.3 | 6.45 | 5.87 | 8.63 | |
| 5,473.8 | 18.25 | 105.92 | 5,270.7 | -418.8 | 1,183.3 | -1,167.7 | 1.70 | -1.69 | -0.67 | |
| 5,488.7 | 18.00 | 105.83 | 5,284.8 | -420.1 | 1,187.7 | -1,172.1 | 1.70 | -1.68 | -0.61 | |
| 5,503.5 | 17.75 | 105.73 | 5,298.9 | -421.3 | 1,192.1 | -1,176.4 | 1.70 | -1.69 | -0.67 | |
| 5,518.3 | 17.49 | 105.61 | 5,313.0 | -422.6 | 1,196.5 | -1,180.7 | 1.77 | -1.75 | -0.81 | |
| 5,533.2 | 17.22 | 105.45 | 5,327.2 | -423.7 | 1,200.7 | -1,184.9 | 1.85 | -1.82 | -1.08 | |
| 5,548.0 | 16.93 | 105.25 | 5,341.4 | -424.9 | 1,204.9 | -1,189.1 | 2.00 | -1.96 | -1.35 | |
| 5,562.8 | 16.62 | 104.97 | 5,355.6 | -426.0 | 1,209.0 | -1,193.2 | 2.16 | -2.09 | -1.89 | |
| 5,577.7 | 16.29 | 104.63 | 5,369.8 | -427.1 | 1,213.1 | -1,197.2 | 2.32 | -2.22 | -2.29 | |
| 5,592.5 | 15.96 | 104.25 | 5,384.0 | -428.1 | 1,217.1 | -1,201.1 | 2.34 | -2.23 | -2.56 | |
| 5,607.3 | 15.64 | 103.85 | 5,398.3 | -429.1 | 1,221.0 | -1,205.0 | 2.28 | -2.16 | -2.70 | |
| 5,622.2 | 15.33 | 103.43 | 5,412.6 | -430.0 | 1,224.9 | -1,208.8 | 2.22 | -2.09 | -2.83 | |
| 5,637.0 | 16.42 | 103.16 | 5,426.9 | -431.0 | 1,228.8 | -1,212.8 | 7.37 | 7.35 | -1.82 | |
| 5,651.8 | 16.38 | 102.84 | 5,441.1 | -431.9 | 1,232.9 | -1,216.8 | 0.67 | -0.27 | -2.16 | |
| 5,666.7 | 16.15 | 102.50 | 5,455.4 | -432.8 | 1,236.9 | -1,220.8 | 1.68 | -1.55 | -2.29 | |
| 5,681.5 | 15.92 | 102.16 | 5,469.6 | -433.7 | 1,241.0 | -1,224.8 | 1.68 | -1.55 | -2.29 | |
| 5,696.3 | 15.69 | 101.79 | 5,483.9 | -434.5 | 1,244.9 | -1,228.7 | 1.69 | -1.55 | -2.49 | |
| 5,711.2 | 15.47 | 101.41 | 5,498.2 | -435.3 | 1,248.8 | -1,232.6 | 1.63 | -1.48 | -2.56 | |
| 5,726.0 | 15.24 | 101.01 | 5,512.5 | -436.1 | 1,252.7 | -1,236.4 | 1.71 | -1.55 | -2.70 | |
| 5,741.0 | 14.99 | 100.60 | 5,527.0 | -436.8 | 1,256.5 | -1,240.2 | 1.81 | -1.67 | -2.73 | |
| 5,756.0 | 14.74 | 100.19 | 5,541.5 | -437.5 | 1,260.3 | -1,244.0 | 1.81 | -1.67 | -2.73 | |
| 5,771.0 | 14.48 | 99.79 | 5,556.0 | -438.2 | 1,264.0 | -1,247.7 | 1.86 | -1.73 | -2.67 | |
| 5,786.0 | 14.23 | 99.42 | 5,570.5 | -438.8 | 1,267.7 | -1,251.3 | 1.78 | -1.67 | -2.47 | |
| 5,801.0 | 13.98 | 99.15 | 5,585.0 | -439.4 | 1,271.3 | -1,254.9 | 1.72 | -1.67 | -1.80 | |
| 5,816.0 | 13.75 | 99.01 | 5,599.6 | -439.9 | 1,274.8 | -1,258.4 | 1.55 | -1.53 | -0.93 | |
| 5,830.8 | 13.52 | 99.17 | 5,614.0 | -440.5 | 1,278.3 | -1,261.9 | 1.57 | -1.55 | 1.08 | |
| 5,845.7 | 13.31 | 99.45 | 5,628.5 | -441.1 | 1,281.7 | -1,265.2 | 1.48 | -1.42 | 1.89 | |
| 5,860.5 | 13.11 | 99.77 | 5,642.9 | -441.6 | 1,285.0 | -1,268.6 | 1.44 | -1.35 | 2.16 | |
| 5,875.3 | 12.91 | 100.00 | 5,657.3 | -442.2 | 1,288.3 | -1,271.8 | 1.39 | -1.35 | 1.55 | |
| 5,890.2 | 12.71 | 100.04 | 5,671.8 | -442.8 | 1,291.6 | -1,275.0 | 1.35 | -1.35 | 0.27 | |
| 5,905.0 | 11.95 | 98.93 | 5,686.3 | -443.3 | 1,294.7 | -1,278.1 | 5.37 | -5.12 | -7.48 | |
| 5,919.8 | 11.79 | 102.78 | 5,700.8 | -443.9 | 1,297.7 | -1,281.1 | 5.45 | -1.08 | 25.96 | |

Ensign Energy Services Inc.

Survey Report

| | | | |
|------------------|---|-------------------------------------|---------------------------------------|
| Company: | Bayswater Exploration & Production, LLC | Local Co-ordinate Reference: | Well Groves Farm O-34-33HC |
| Project: | SEC.34-T7N-R65W | TVD Reference: | RKB @ 4867.0ft (Ensign 153 RKB - 23') |
| Site: | Groves Farm 34-L Pad Sec.34-T7N-R65W | MD Reference: | RKB @ 4867.0ft (Ensign 153 RKB - 23') |
| Well: | Groves Farm O-34-33HC | North Reference: | True |
| Wellbore: | Groves Farms O-34-33HC Wellbore #1 | Survey Calculation Method: | Minimum Curvature |
| Design: | Groves Farms O-34-33HC Wellbore #1 | Database: | US_EDM |

| Survey | | | | | | | | | | |
|---------------------|-----------------|-------------|---------------------|------------|------------|-----------------------|-------------------------|------------------------|-----------------------|--|
| Measured Depth (ft) | Inclination (°) | Azimuth (°) | Vertical Depth (ft) | +N/-S (ft) | +E/-W (ft) | Vertical Section (ft) | Dogleg Rate (°/100usft) | Build Rate (°/100usft) | Turn Rate (°/100usft) | |
| 5,934.7 | 11.59 | 101.57 | 5,715.3 | -444.5 | 1,300.6 | -1,284.0 | 2.13 | -1.35 | -8.15 | |
| 5,949.5 | 11.40 | 100.16 | 5,729.9 | -445.1 | 1,303.5 | -1,286.9 | 2.29 | -1.28 | -9.51 | |
| 5,964.3 | 11.22 | 98.71 | 5,744.4 | -445.5 | 1,306.4 | -1,289.8 | 2.27 | -1.21 | -9.78 | |
| 5,979.2 | 11.05 | 97.40 | 5,759.0 | -445.9 | 1,309.2 | -1,292.6 | 2.05 | -1.15 | -8.83 | |
| 5,994.0 | 11.01 | 105.52 | 5,773.5 | -446.5 | 1,312.0 | -1,295.3 | 10.47 | -0.27 | 54.75 | |
| 6,008.8 | 10.88 | 106.26 | 5,788.1 | -447.3 | 1,314.7 | -1,298.0 | 1.29 | -0.88 | 4.99 | |
| 6,023.7 | 10.71 | 105.98 | 5,802.7 | -448.0 | 1,317.4 | -1,300.6 | 1.20 | -1.15 | -1.89 | |
| 6,038.5 | 10.53 | 105.82 | 5,817.3 | -448.8 | 1,320.0 | -1,303.2 | 1.23 | -1.21 | -1.08 | |
| 6,053.3 | 10.34 | 105.70 | 5,831.8 | -449.5 | 1,322.6 | -1,305.8 | 1.29 | -1.28 | -0.81 | |
| 6,068.2 | 10.15 | 105.57 | 5,846.4 | -450.2 | 1,325.1 | -1,308.3 | 1.29 | -1.28 | -0.88 | |
| 6,083.0 | 9.93 | 105.33 | 5,861.0 | -450.9 | 1,327.6 | -1,310.8 | 1.51 | -1.48 | -1.62 | |
| 6,098.0 | 9.68 | 104.83 | 5,875.8 | -451.6 | 1,330.1 | -1,313.2 | 1.76 | -1.67 | -3.33 | |
| 6,113.0 | 9.41 | 104.19 | 5,890.6 | -452.2 | 1,332.5 | -1,315.6 | 1.93 | -1.80 | -4.27 | |
| 6,128.0 | 9.14 | 103.45 | 5,905.4 | -452.8 | 1,334.8 | -1,317.9 | 1.97 | -1.80 | -4.93 | |
| 6,143.0 | 8.89 | 102.67 | 5,920.2 | -453.3 | 1,337.1 | -1,320.2 | 1.86 | -1.67 | -5.20 | |
| 6,158.0 | 8.67 | 101.90 | 5,935.1 | -453.8 | 1,339.4 | -1,322.4 | 1.66 | -1.47 | -5.13 | |
| 6,173.0 | 8.18 | 109.39 | 5,949.9 | -454.4 | 1,341.5 | -1,324.5 | 8.00 | -3.27 | 49.93 | |
| 6,187.8 | 8.06 | 108.89 | 5,964.6 | -455.1 | 1,343.5 | -1,326.5 | 0.94 | -0.81 | -3.37 | |
| 6,202.7 | 7.96 | 108.44 | 5,979.3 | -455.7 | 1,345.4 | -1,328.4 | 0.80 | -0.67 | -3.03 | |
| 6,217.5 | 7.89 | 108.03 | 5,994.0 | -456.4 | 1,347.4 | -1,330.3 | 0.61 | -0.47 | -2.76 | |
| 6,232.3 | 7.82 | 107.67 | 6,008.7 | -457.0 | 1,349.3 | -1,332.2 | 0.58 | -0.47 | -2.43 | |
| 6,247.2 | 7.76 | 107.35 | 6,023.4 | -457.6 | 1,351.2 | -1,334.1 | 0.50 | -0.40 | -2.16 | |
| 6,262.0 | 6.66 | 107.62 | 6,038.1 | -458.2 | 1,353.0 | -1,335.9 | 7.42 | -7.42 | 1.82 | |
| 6,276.8 | 6.41 | 107.53 | 6,052.8 | -458.7 | 1,354.6 | -1,337.5 | 1.69 | -1.69 | -0.61 | |
| 6,291.7 | 6.33 | 107.38 | 6,067.6 | -459.2 | 1,356.2 | -1,339.0 | 0.55 | -0.54 | -1.01 | |
| 6,306.5 | 6.26 | 107.23 | 6,082.3 | -459.7 | 1,357.7 | -1,340.6 | 0.48 | -0.47 | -1.01 | |
| 6,321.3 | 6.18 | 107.02 | 6,097.0 | -460.1 | 1,359.3 | -1,342.1 | 0.56 | -0.54 | -1.42 | |
| 6,336.2 | 6.10 | 106.66 | 6,111.8 | -460.6 | 1,360.8 | -1,343.6 | 0.60 | -0.54 | -2.43 | |
| 6,351.0 | 4.70 | 108.56 | 6,126.6 | -461.0 | 1,362.1 | -1,344.9 | 9.52 | -9.44 | 12.81 | |
| 6,365.7 | 4.40 | 107.80 | 6,141.2 | -461.4 | 1,363.2 | -1,346.0 | 2.09 | -2.04 | -5.18 | |
| 6,380.3 | 4.29 | 106.22 | 6,155.8 | -461.7 | 1,364.3 | -1,347.0 | 1.11 | -0.75 | -10.78 | |
| 6,395.0 | 4.19 | 104.46 | 6,170.4 | -462.0 | 1,365.3 | -1,348.1 | 1.12 | -0.68 | -12.00 | |
| 6,409.7 | 4.11 | 102.71 | 6,185.1 | -462.2 | 1,366.3 | -1,349.1 | 1.02 | -0.55 | -11.93 | |
| 6,424.3 | 4.06 | 101.15 | 6,199.7 | -462.4 | 1,367.4 | -1,350.1 | 0.83 | -0.34 | -10.64 | |
| 6,439.0 | 3.57 | 97.20 | 6,214.3 | -462.6 | 1,368.3 | -1,351.1 | 3.79 | -3.34 | -26.93 | |
| 6,454.0 | 2.81 | 79.09 | 6,229.3 | -462.6 | 1,369.2 | -1,351.9 | 8.35 | -5.07 | -120.73 | |
| 6,469.0 | 2.91 | 78.91 | 6,244.3 | -462.4 | 1,369.9 | -1,352.6 | 0.67 | 0.67 | -1.20 | |
| 6,484.0 | 3.04 | 79.03 | 6,259.3 | -462.3 | 1,370.7 | -1,353.4 | 0.87 | 0.87 | 0.80 | |
| 6,499.0 | 3.18 | 79.24 | 6,274.2 | -462.1 | 1,371.5 | -1,354.2 | 0.94 | 0.93 | 1.40 | |
| 6,514.0 | 2.88 | 78.46 | 6,289.2 | -462.0 | 1,372.2 | -1,355.0 | 2.02 | -2.00 | -5.20 | |
| 6,529.0 | 1.00 | 55.85 | 6,304.2 | -461.8 | 1,372.7 | -1,355.5 | 13.29 | -12.53 | -150.73 | |
| 6,543.8 | 0.82 | 41.22 | 6,319.0 | -461.7 | 1,372.9 | -1,355.6 | 1.97 | -1.21 | -98.65 | |
| 6,558.7 | 0.78 | 44.54 | 6,333.9 | -461.5 | 1,373.0 | -1,355.8 | 0.41 | -0.27 | 22.37 | |

Ensign Energy Services Inc.

Survey Report

| | | | |
|------------------|---|-------------------------------------|---------------------------------------|
| Company: | Bayswater Exploration & Production, LLC | Local Co-ordinate Reference: | Well Groves Farm O-34-33HC |
| Project: | SEC.34-T7N-R65W | TVD Reference: | RKB @ 4867.0ft (Ensign 153 RKB - 23') |
| Site: | Groves Farm 34-L Pad Sec.34-T7N-R65W | MD Reference: | RKB @ 4867.0ft (Ensign 153 RKB - 23') |
| Well: | Groves Farm O-34-33HC | North Reference: | True |
| Wellbore: | Groves Farms O-34-33HC Wellbore #1 | Survey Calculation Method: | Minimum Curvature |
| Design: | Groves Farms O-34-33HC Wellbore #1 | Database: | US_EDM |

Survey

| Measured Depth (ft) | Inclination (°) | Azimuth (°) | Vertical Depth (ft) | +N/-S (ft) | +E/-W (ft) | Vertical Section (ft) | Dogleg Rate (°/100usft) | Build Rate (°/100usft) | Turn Rate (°/100usft) |
|---------------------|-----------------|-------------|---------------------|------------|------------|-----------------------|-------------------------|------------------------|-----------------------|
| 6,573.5 | 0.75 | 48.18 | 6,348.7 | -461.4 | 1,373.2 | -1,355.9 | 0.39 | -0.20 | 24.54 |
| 6,588.3 | 0.72 | 52.16 | 6,363.5 | -461.3 | 1,373.3 | -1,356.1 | 0.40 | -0.20 | 26.84 |
| 6,603.2 | 0.69 | 56.52 | 6,378.4 | -461.2 | 1,373.5 | -1,356.2 | 0.41 | -0.20 | 29.38 |
| 6,618.0 | 0.67 | 61.24 | 6,393.2 | -461.1 | 1,373.6 | -1,356.4 | 0.40 | -0.13 | 31.83 |
| 6,632.8 | 0.67 | 66.06 | 6,408.0 | -461.0 | 1,373.8 | -1,356.6 | 0.38 | 0.00 | 32.50 |
| 6,647.7 | 0.67 | 70.92 | 6,422.9 | -460.9 | 1,373.9 | -1,356.7 | 0.38 | 0.00 | 32.75 |
| 6,662.5 | 0.68 | 75.77 | 6,437.7 | -460.9 | 1,374.1 | -1,356.9 | 0.39 | 0.07 | 32.70 |
| 6,677.3 | 0.69 | 80.57 | 6,452.5 | -460.9 | 1,374.3 | -1,357.1 | 0.39 | 0.07 | 32.37 |
| 6,692.2 | 0.71 | 85.26 | 6,467.4 | -460.8 | 1,374.5 | -1,357.2 | 0.41 | 0.13 | 31.60 |
| 6,707.0 | 0.73 | 89.80 | 6,482.2 | -460.8 | 1,374.6 | -1,357.4 | 0.41 | 0.13 | 30.61 |
| 6,722.0 | 0.42 | 42.73 | 6,497.2 | -460.8 | 1,374.8 | -1,357.6 | 3.60 | -2.07 | -313.80 |
| 6,737.0 | 0.25 | 337.42 | 6,512.2 | -460.7 | 1,374.8 | -1,357.6 | 2.59 | -1.13 | -435.40 |
| 6,752.0 | 1.67 | 272.53 | 6,527.2 | -460.7 | 1,374.6 | -1,357.4 | 10.53 | 9.47 | -432.60 |
| 6,767.0 | 3.32 | 277.30 | 6,542.2 | -460.6 | 1,373.9 | -1,356.7 | 11.08 | 11.00 | 31.80 |
| 6,782.0 | 4.24 | 276.97 | 6,557.1 | -460.5 | 1,372.9 | -1,355.7 | 6.14 | 6.13 | -2.20 |
| 6,797.0 | 6.23 | 276.79 | 6,572.1 | -460.3 | 1,371.6 | -1,354.4 | 13.27 | 13.27 | -1.20 |
| 6,812.0 | 8.51 | 278.05 | 6,586.9 | -460.1 | 1,369.7 | -1,352.5 | 15.24 | 15.20 | 8.40 |
| 6,827.0 | 10.85 | 280.42 | 6,601.7 | -459.7 | 1,367.2 | -1,350.0 | 15.82 | 15.60 | 15.80 |
| 6,842.0 | 11.31 | 281.39 | 6,616.5 | -459.1 | 1,364.4 | -1,347.2 | 3.31 | 3.07 | 6.47 |
| 6,857.0 | 11.30 | 281.84 | 6,631.2 | -458.5 | 1,361.5 | -1,344.3 | 0.59 | -0.07 | 3.00 |
| 6,872.0 | 12.00 | 279.89 | 6,645.9 | -458.0 | 1,358.5 | -1,341.4 | 5.35 | 4.67 | -13.00 |
| 6,887.0 | 13.66 | 278.10 | 6,660.5 | -457.4 | 1,355.2 | -1,338.1 | 11.38 | 11.07 | -11.93 |
| 6,901.8 | 15.48 | 280.09 | 6,674.8 | -456.8 | 1,351.5 | -1,334.5 | 12.73 | 12.27 | 13.42 |
| 6,916.7 | 17.48 | 283.65 | 6,689.1 | -456.0 | 1,347.4 | -1,330.4 | 15.09 | 13.48 | 23.99 |
| 6,931.5 | 18.02 | 284.30 | 6,703.2 | -454.9 | 1,343.0 | -1,326.0 | 3.88 | 3.64 | 4.38 |
| 6,946.3 | 17.72 | 284.13 | 6,717.3 | -453.8 | 1,338.6 | -1,321.7 | 2.05 | -2.02 | -1.15 |
| 6,961.2 | 17.84 | 282.34 | 6,731.4 | -452.7 | 1,334.2 | -1,317.3 | 3.77 | 0.81 | -12.06 |
| 6,976.0 | 19.02 | 279.78 | 6,745.5 | -451.8 | 1,329.6 | -1,312.7 | 9.65 | 7.96 | -17.26 |
| 6,991.0 | 20.92 | 278.93 | 6,759.6 | -451.0 | 1,324.5 | -1,307.7 | 12.81 | 12.67 | -5.67 |
| 7,006.0 | 23.04 | 276.36 | 6,773.5 | -450.3 | 1,319.0 | -1,302.2 | 15.52 | 14.13 | -17.13 |
| 7,021.0 | 24.44 | 274.92 | 6,787.2 | -449.7 | 1,313.0 | -1,296.2 | 10.10 | 9.33 | -9.60 |
| 7,036.0 | 24.21 | 274.85 | 6,800.9 | -449.1 | 1,306.8 | -1,290.1 | 1.55 | -1.53 | -0.47 |
| 7,051.0 | 24.84 | 274.05 | 6,814.6 | -448.7 | 1,300.6 | -1,283.9 | 4.75 | 4.20 | -5.33 |
| 7,066.0 | 26.82 | 272.97 | 6,828.1 | -448.3 | 1,294.1 | -1,277.4 | 13.57 | 13.20 | -7.20 |
| 7,080.8 | 29.08 | 272.22 | 6,841.2 | -447.9 | 1,287.1 | -1,270.4 | 15.42 | 15.24 | -5.06 |
| 7,095.7 | 30.92 | 270.24 | 6,854.0 | -447.8 | 1,279.7 | -1,263.0 | 14.08 | 12.40 | -13.34 |
| 7,110.5 | 32.99 | 267.60 | 6,866.6 | -447.9 | 1,271.9 | -1,255.2 | 16.84 | 13.96 | -17.80 |
| 7,125.3 | 34.40 | 266.49 | 6,878.9 | -448.4 | 1,263.7 | -1,247.0 | 10.37 | 9.51 | -7.48 |
| 7,140.2 | 35.46 | 266.00 | 6,891.1 | -448.9 | 1,255.2 | -1,238.5 | 7.39 | 7.14 | -3.30 |
| 7,155.0 | 37.88 | 265.47 | 6,903.0 | -449.6 | 1,246.4 | -1,229.6 | 16.46 | 16.32 | -3.57 |
| 7,170.0 | 40.52 | 265.83 | 6,914.6 | -450.3 | 1,236.9 | -1,220.1 | 17.67 | 17.60 | 2.40 |
| 7,185.0 | 43.26 | 265.97 | 6,925.8 | -451.0 | 1,226.9 | -1,210.1 | 18.28 | 18.27 | 0.93 |
| 7,200.0 | 46.03 | 265.92 | 6,936.4 | -451.8 | 1,216.4 | -1,199.6 | 18.47 | 18.47 | -0.33 |

Ensign Energy Services Inc.

Survey Report

| | | | |
|------------------|---|-------------------------------------|---------------------------------------|
| Company: | Bayswater Exploration & Production, LLC | Local Co-ordinate Reference: | Well Groves Farm O-34-33HC |
| Project: | SEC.34-T7N-R65W | TVD Reference: | RKB @ 4867.0ft (Ensign 153 RKB - 23') |
| Site: | Groves Farm 34-L Pad Sec.34-T7N-R65W | MD Reference: | RKB @ 4867.0ft (Ensign 153 RKB - 23') |
| Well: | Groves Farm O-34-33HC | North Reference: | True |
| Wellbore: | Groves Farms O-34-33HC Wellbore #1 | Survey Calculation Method: | Minimum Curvature |
| Design: | Groves Farms O-34-33HC Wellbore #1 | Database: | US_EDM |

| Survey | | | | | | | | | | |
|---------------------------------|-----------------|-------------|---------------------|------------|------------|-----------------------|-------------------------|------------------------|-----------------------|--|
| Measured Depth (ft) | Inclination (°) | Azimuth (°) | Vertical Depth (ft) | +N/-S (ft) | +E/-W (ft) | Vertical Section (ft) | Dogleg Rate (°/100usft) | Build Rate (°/100usft) | Turn Rate (°/100usft) | |
| 7,215.0 | 48.02 | 265.51 | 6,946.7 | -452.6 | 1,205.5 | -1,188.6 | 13.42 | 13.27 | -2.73 | |
| 7,230.0 | 49.47 | 265.71 | 6,956.6 | -453.4 | 1,194.2 | -1,177.4 | 9.72 | 9.67 | 1.33 | |
| 7,245.0 | 52.05 | 266.28 | 6,966.1 | -454.3 | 1,182.6 | -1,165.8 | 17.45 | 17.20 | 3.80 | |
| 7,259.8 | 54.48 | 267.25 | 6,974.9 | -454.9 | 1,170.8 | -1,153.9 | 17.20 | 16.39 | 6.54 | |
| 7,274.7 | 56.67 | 268.67 | 6,983.3 | -455.4 | 1,158.5 | -1,141.6 | 16.74 | 14.76 | 9.57 | |
| 7,289.5 | 56.74 | 269.22 | 6,991.5 | -455.6 | 1,146.1 | -1,129.2 | 3.14 | 0.47 | 3.71 | |
| 7,304.3 | 56.42 | 269.27 | 6,999.6 | -455.8 | 1,133.8 | -1,116.9 | 2.18 | -2.16 | 0.34 | |
| 7,319.2 | 56.09 | 269.32 | 7,007.9 | -455.9 | 1,121.4 | -1,104.5 | 2.24 | -2.22 | 0.34 | |
| 7,334.0 | 56.05 | 269.42 | 7,016.1 | -456.0 | 1,109.1 | -1,092.2 | 0.62 | -0.27 | 0.67 | |
| 7,349.0 | 57.87 | 269.84 | 7,024.3 | -456.1 | 1,096.5 | -1,079.7 | 12.36 | 12.13 | 2.80 | |
| 7,364.0 | 58.17 | 269.78 | 7,032.3 | -456.2 | 1,083.8 | -1,066.9 | 2.03 | 2.00 | -0.40 | |
| 7,379.0 | 57.96 | 269.75 | 7,040.2 | -456.2 | 1,071.1 | -1,054.2 | 1.41 | -1.40 | -0.20 | |
| 7,394.0 | 57.77 | 269.71 | 7,048.2 | -456.3 | 1,058.4 | -1,041.5 | 1.29 | -1.27 | -0.27 | |
| 7,409.0 | 58.92 | 269.52 | 7,056.0 | -456.4 | 1,045.6 | -1,028.8 | 7.74 | 7.67 | -1.27 | |
| 7,424.0 | 61.34 | 269.68 | 7,063.5 | -456.5 | 1,032.6 | -1,015.8 | 16.16 | 16.13 | 1.07 | |
| 7,438.8 | 63.79 | 270.64 | 7,070.3 | -456.4 | 1,019.4 | -1,002.6 | 17.49 | 16.52 | 6.47 | |
| 7,453.7 | 64.35 | 270.93 | 7,076.8 | -456.2 | 1,006.1 | -989.3 | 4.16 | 3.77 | 1.95 | |
| 7,468.5 | 64.23 | 270.78 | 7,083.3 | -456.0 | 992.7 | -975.9 | 1.22 | -0.81 | -1.01 | |
| 7,483.3 | 64.12 | 270.63 | 7,089.7 | -455.9 | 979.4 | -962.6 | 1.17 | -0.74 | -1.01 | |
| 7,498.2 | 64.94 | 271.31 | 7,096.1 | -455.6 | 966.0 | -949.2 | 6.90 | 5.53 | 4.58 | |
| 7,513.0 | 67.08 | 272.63 | 7,102.1 | -455.2 | 952.5 | -935.7 | 16.56 | 14.43 | 8.90 | |
| 7,528.0 | 69.47 | 272.97 | 7,107.7 | -454.5 | 938.5 | -921.8 | 16.07 | 15.93 | 2.27 | |
| 7,543.0 | 71.66 | 272.23 | 7,112.7 | -453.9 | 924.4 | -907.7 | 15.32 | 14.60 | -4.93 | |
| 7,558.0 | 73.86 | 272.03 | 7,117.1 | -453.3 | 910.1 | -893.4 | 14.72 | 14.67 | -1.33 | |
| 7,573.0 | 73.98 | 272.11 | 7,121.3 | -452.8 | 895.7 | -879.1 | 0.95 | 0.80 | 0.53 | |
| 7,588.0 | 75.09 | 271.97 | 7,125.3 | -452.3 | 881.2 | -864.6 | 7.45 | 7.40 | -0.93 | |
| 7,603.0 | 77.44 | 271.99 | 7,128.8 | -451.8 | 866.7 | -850.1 | 15.67 | 15.67 | 0.13 | |
| 7,617.8 | 79.87 | 272.65 | 7,131.8 | -451.2 | 852.2 | -835.6 | 16.96 | 16.39 | 4.45 | |
| 7,632.7 | 82.31 | 273.46 | 7,134.1 | -450.4 | 837.5 | -821.0 | 17.30 | 16.44 | 5.46 | |
| 7,647.5 | 83.31 | 273.49 | 7,135.9 | -449.5 | 822.8 | -806.4 | 6.75 | 6.74 | 0.20 | |
| 7,662.3 | 83.54 | 273.35 | 7,137.6 | -448.6 | 808.1 | -791.7 | 1.81 | 1.55 | -0.94 | |
| 7,677.2 | 83.76 | 273.18 | 7,139.3 | -447.8 | 793.4 | -777.0 | 1.87 | 1.48 | -1.15 | |
| 7,692.0 | 84.22 | 273.03 | 7,140.8 | -447.0 | 778.7 | -762.3 | 3.26 | 3.10 | -1.01 | |
| 7,706.8 | 86.69 | 273.12 | 7,142.0 | -446.2 | 763.9 | -747.6 | 16.67 | 16.66 | 0.61 | |
| 7,721.7 | 87.30 | 273.16 | 7,142.8 | -445.4 | 749.1 | -732.8 | 4.12 | 4.11 | 0.27 | |
| 7,728.9 | 87.23 | 273.01 | 7,143.1 | -445.0 | 741.9 | -725.7 | 2.32 | -1.01 | -2.09 | |
| TPZ - 2183'FSL & 150'FEL Sec.34 | | | | | | | | | | |
| 7,736.5 | 87.15 | 272.85 | 7,143.5 | -444.6 | 734.3 | -718.1 | 2.32 | -1.01 | -2.09 | |
| 7,751.3 | 86.97 | 272.52 | 7,144.2 | -443.9 | 719.5 | -703.3 | 2.53 | -1.21 | -2.23 | |
| 7,766.2 | 86.79 | 272.20 | 7,145.0 | -443.3 | 704.7 | -688.6 | 2.47 | -1.21 | -2.16 | |
| 7,781.0 | 86.65 | 271.92 | 7,145.9 | -442.8 | 689.9 | -673.8 | 2.11 | -0.94 | -1.89 | |
| 7,796.0 | 86.61 | 271.71 | 7,146.8 | -442.3 | 675.0 | -658.8 | 1.42 | -0.27 | -1.40 | |
| 7,811.0 | 86.62 | 271.55 | 7,147.7 | -441.9 | 660.0 | -643.9 | 1.07 | 0.07 | -1.07 | |
| 7,826.0 | 86.67 | 271.42 | 7,148.5 | -441.5 | 645.0 | -629.0 | 0.93 | 0.33 | -0.87 | |

Ensign Energy Services Inc.

Survey Report

| | | | |
|------------------|---|-------------------------------------|---------------------------------------|
| Company: | Bayswater Exploration & Production, LLC | Local Co-ordinate Reference: | Well Groves Farm O-34-33HC |
| Project: | SEC.34-T7N-R65W | TVD Reference: | RKB @ 4867.0ft (Ensign 153 RKB - 23') |
| Site: | Groves Farm 34-L Pad Sec.34-T7N-R65W | MD Reference: | RKB @ 4867.0ft (Ensign 153 RKB - 23') |
| Well: | Groves Farm O-34-33HC | North Reference: | True |
| Wellbore: | Groves Farms O-34-33HC Wellbore #1 | Survey Calculation Method: | Minimum Curvature |
| Design: | Groves Farms O-34-33HC Wellbore #1 | Database: | US_EDM |

| Survey | | | | | | | | | | |
|---------------------|-----------------|-------------|---------------------|------------|------------|-----------------------|-------------------------|------------------------|-----------------------|--|
| Measured Depth (ft) | Inclination (°) | Azimuth (°) | Vertical Depth (ft) | +N/-S (ft) | +E/-W (ft) | Vertical Section (ft) | Dogleg Rate (°/100usft) | Build Rate (°/100usft) | Turn Rate (°/100usft) | |
| 7,841.0 | 86.75 | 271.30 | 7,149.4 | -441.1 | 630.1 | -614.0 | 0.96 | 0.53 | -0.80 | |
| 7,856.0 | 87.90 | 271.30 | 7,150.1 | -440.8 | 615.1 | -599.1 | 7.67 | 7.67 | 0.00 | |
| 7,871.0 | 88.60 | 271.26 | 7,150.6 | -440.5 | 600.1 | -584.1 | 4.67 | 4.67 | -0.27 | |
| 7,885.8 | 88.74 | 271.17 | 7,150.9 | -440.1 | 585.3 | -569.3 | 1.12 | 0.94 | -0.61 | |
| 7,900.7 | 88.89 | 271.07 | 7,151.2 | -439.9 | 570.4 | -554.5 | 1.21 | 1.01 | -0.67 | |
| 7,915.5 | 89.06 | 270.97 | 7,151.5 | -439.6 | 555.6 | -539.7 | 1.33 | 1.15 | -0.67 | |
| 7,930.3 | 89.23 | 270.88 | 7,151.7 | -439.4 | 540.8 | -524.9 | 1.30 | 1.15 | -0.61 | |
| 7,945.2 | 89.41 | 270.78 | 7,151.9 | -439.1 | 525.9 | -510.0 | 1.39 | 1.21 | -0.67 | |
| 7,960.0 | 89.58 | 270.67 | 7,152.0 | -439.0 | 511.1 | -495.2 | 1.37 | 1.15 | -0.74 | |
| 7,975.0 | 89.77 | 270.55 | 7,152.1 | -438.8 | 496.1 | -480.2 | 1.50 | 1.27 | -0.80 | |
| 7,990.0 | 89.94 | 270.43 | 7,152.1 | -438.7 | 481.1 | -465.2 | 1.39 | 1.13 | -0.80 | |
| 8,005.0 | 90.11 | 270.31 | 7,152.1 | -438.6 | 466.1 | -450.3 | 1.39 | 1.13 | -0.80 | |
| 8,020.0 | 90.27 | 270.19 | 7,152.1 | -438.5 | 451.1 | -435.3 | 1.33 | 1.07 | -0.80 | |
| 8,035.0 | 90.41 | 270.07 | 7,152.0 | -438.5 | 436.1 | -420.3 | 1.23 | 0.93 | -0.80 | |
| 8,050.0 | 90.51 | 269.95 | 7,151.9 | -438.5 | 421.1 | -405.3 | 1.04 | 0.67 | -0.80 | |
| 8,064.8 | 90.55 | 269.84 | 7,151.7 | -438.5 | 406.3 | -390.5 | 0.79 | 0.27 | -0.74 | |
| 8,079.7 | 90.55 | 269.73 | 7,151.6 | -438.5 | 391.4 | -375.6 | 0.74 | 0.00 | -0.74 | |
| 8,094.5 | 90.54 | 269.63 | 7,151.4 | -438.6 | 376.6 | -360.8 | 0.68 | -0.07 | -0.67 | |
| 8,109.3 | 90.54 | 269.55 | 7,151.3 | -438.7 | 361.8 | -346.0 | 0.54 | 0.00 | -0.54 | |
| 8,124.2 | 90.55 | 269.47 | 7,151.2 | -438.9 | 347.0 | -331.2 | 0.54 | 0.07 | -0.54 | |
| 8,139.0 | 88.81 | 270.00 | 7,151.2 | -438.9 | 332.1 | -316.3 | 12.27 | -11.73 | 3.57 | |
| 8,153.8 | 88.24 | 270.02 | 7,151.6 | -438.9 | 317.3 | -301.5 | 3.85 | -3.84 | 0.13 | |
| 8,168.7 | 88.35 | 270.00 | 7,152.1 | -438.9 | 302.5 | -286.7 | 0.75 | 0.74 | -0.13 | |
| 8,183.5 | 88.48 | 269.99 | 7,152.5 | -438.9 | 287.6 | -271.9 | 0.88 | 0.88 | -0.07 | |
| 8,198.3 | 88.61 | 269.99 | 7,152.9 | -438.9 | 272.8 | -257.1 | 0.88 | 0.88 | 0.00 | |
| 8,213.2 | 88.75 | 269.99 | 7,153.2 | -438.9 | 258.0 | -242.2 | 0.94 | 0.94 | 0.00 | |
| 8,228.0 | 88.90 | 269.99 | 7,153.5 | -438.9 | 243.2 | -227.4 | 1.01 | 1.01 | 0.00 | |
| 8,243.0 | 89.05 | 269.97 | 7,153.8 | -438.9 | 228.2 | -212.4 | 1.01 | 1.00 | -0.13 | |
| 8,258.0 | 89.20 | 269.95 | 7,154.0 | -439.0 | 213.2 | -197.4 | 1.01 | 1.00 | -0.13 | |
| 8,273.0 | 89.34 | 269.93 | 7,154.2 | -439.0 | 198.2 | -182.5 | 0.94 | 0.93 | -0.13 | |
| 8,288.0 | 89.49 | 269.90 | 7,154.3 | -439.0 | 183.2 | -167.5 | 1.02 | 1.00 | -0.20 | |
| 8,303.0 | 89.63 | 269.87 | 7,154.5 | -439.0 | 168.2 | -152.5 | 0.95 | 0.93 | -0.20 | |
| 8,318.0 | 89.76 | 269.84 | 7,154.5 | -439.1 | 153.2 | -137.5 | 0.89 | 0.87 | -0.20 | |
| 8,333.0 | 89.89 | 269.80 | 7,154.6 | -439.1 | 138.2 | -122.5 | 0.91 | 0.87 | -0.27 | |
| 8,348.0 | 90.01 | 269.77 | 7,154.6 | -439.2 | 123.2 | -107.5 | 0.82 | 0.80 | -0.20 | |
| 8,363.0 | 90.13 | 269.72 | 7,154.6 | -439.2 | 108.2 | -92.5 | 0.87 | 0.80 | -0.33 | |
| 8,378.0 | 90.25 | 269.67 | 7,154.5 | -439.3 | 93.2 | -77.5 | 0.87 | 0.80 | -0.33 | |
| 8,393.0 | 90.37 | 269.61 | 7,154.4 | -439.4 | 78.2 | -62.5 | 0.89 | 0.80 | -0.40 | |
| 8,408.0 | 90.50 | 269.52 | 7,154.3 | -439.5 | 63.2 | -47.5 | 1.05 | 0.87 | -0.60 | |
| 8,422.8 | 90.63 | 269.40 | 7,154.2 | -439.7 | 48.3 | -32.7 | 1.19 | 0.88 | -0.81 | |
| 8,437.7 | 90.76 | 269.27 | 7,154.0 | -439.8 | 33.5 | -17.9 | 1.24 | 0.88 | -0.88 | |
| 8,452.5 | 90.90 | 269.14 | 7,153.8 | -440.0 | 18.7 | -3.0 | 1.29 | 0.94 | -0.88 | |
| 8,467.3 | 91.03 | 269.02 | 7,153.5 | -440.3 | 3.8 | 11.8 | 1.19 | 0.88 | -0.81 | |

Ensign Energy Services Inc.

Survey Report

| | | | |
|------------------|---|-------------------------------------|---------------------------------------|
| Company: | Bayswater Exploration & Production, LLC | Local Co-ordinate Reference: | Well Groves Farm O-34-33HC |
| Project: | SEC.34-T7N-R65W | TVD Reference: | RKB @ 4867.0ft (Ensign 153 RKB - 23') |
| Site: | Groves Farm 34-L Pad Sec.34-T7N-R65W | MD Reference: | RKB @ 4867.0ft (Ensign 153 RKB - 23') |
| Well: | Groves Farm O-34-33HC | North Reference: | True |
| Wellbore: | Groves Farms O-34-33HC Wellbore #1 | Survey Calculation Method: | Minimum Curvature |
| Design: | Groves Farms O-34-33HC Wellbore #1 | Database: | US_EDM |

Survey

| Measured Depth (ft) | Inclination (°) | Azimuth (°) | Vertical Depth (ft) | +N/-S (ft) | +E/-W (ft) | Vertical Section (ft) | Dogleg Rate (°/100usft) | Build Rate (°/100usft) | Turn Rate (°/100usft) |
|---------------------|-----------------|-------------|---------------------|------------|------------|-----------------------|-------------------------|------------------------|-----------------------|
| 8,482.2 | 90.98 | 269.34 | 7,153.3 | -440.5 | -11.0 | 26.6 | 2.18 | -0.34 | 2.16 |
| 8,497.0 | 90.33 | 271.16 | 7,153.1 | -440.4 | -25.8 | 41.4 | 13.03 | -4.38 | 12.27 |
| 8,511.8 | 90.43 | 271.16 | 7,153.0 | -440.1 | -40.7 | 56.2 | 0.67 | 0.67 | 0.00 |
| 8,526.7 | 90.52 | 271.19 | 7,152.9 | -439.8 | -55.5 | 71.1 | 0.64 | 0.61 | 0.20 |
| 8,541.5 | 90.62 | 271.23 | 7,152.7 | -439.5 | -70.3 | 85.9 | 0.73 | 0.67 | 0.27 |
| 8,556.3 | 90.71 | 271.27 | 7,152.6 | -439.2 | -85.1 | 100.7 | 0.66 | 0.61 | 0.27 |
| 8,571.2 | 90.81 | 271.31 | 7,152.4 | -438.8 | -100.0 | 115.5 | 0.73 | 0.67 | 0.27 |
| 8,586.0 | 90.90 | 271.32 | 7,152.2 | -438.5 | -114.8 | 130.3 | 0.61 | 0.61 | 0.07 |
| 8,601.0 | 91.00 | 271.30 | 7,151.9 | -438.2 | -129.8 | 145.3 | 0.68 | 0.67 | -0.13 |
| 8,616.0 | 91.11 | 271.24 | 7,151.6 | -437.8 | -144.8 | 160.2 | 0.84 | 0.73 | -0.40 |
| 8,631.0 | 91.21 | 271.18 | 7,151.3 | -437.5 | -159.8 | 175.2 | 0.78 | 0.67 | -0.40 |
| 8,646.0 | 91.30 | 271.11 | 7,151.0 | -437.2 | -174.8 | 190.2 | 0.76 | 0.60 | -0.47 |
| 8,661.0 | 90.82 | 270.93 | 7,150.7 | -436.9 | -189.8 | 205.1 | 3.42 | -3.20 | -1.20 |
| 8,676.0 | 88.76 | 270.62 | 7,150.8 | -436.7 | -204.8 | 220.1 | 13.89 | -13.73 | -2.07 |
| 8,690.8 | 88.33 | 270.62 | 7,151.2 | -436.6 | -219.6 | 234.9 | 2.90 | -2.90 | 0.00 |
| 8,705.7 | 88.35 | 270.55 | 7,151.6 | -436.4 | -234.4 | 249.8 | 0.49 | 0.13 | -0.47 |
| 8,720.5 | 88.37 | 270.48 | 7,152.0 | -436.3 | -249.2 | 264.6 | 0.49 | 0.13 | -0.47 |
| 8,735.3 | 88.39 | 270.41 | 7,152.4 | -436.2 | -264.1 | 279.4 | 0.49 | 0.13 | -0.47 |
| 8,750.2 | 88.43 | 270.35 | 7,152.8 | -436.1 | -278.9 | 294.2 | 0.49 | 0.27 | -0.40 |
| 8,765.0 | 88.65 | 272.29 | 7,153.2 | -435.7 | -293.7 | 309.0 | 13.16 | 1.48 | 13.08 |
| 8,779.8 | 88.79 | 272.52 | 7,153.5 | -435.1 | -308.5 | 323.8 | 1.82 | 0.94 | 1.55 |
| 8,794.7 | 88.93 | 272.51 | 7,153.8 | -434.5 | -323.4 | 338.6 | 0.95 | 0.94 | -0.07 |
| 8,809.5 | 89.09 | 272.51 | 7,154.1 | -433.8 | -338.2 | 353.4 | 1.08 | 1.08 | 0.00 |
| 8,824.3 | 89.26 | 272.52 | 7,154.3 | -433.2 | -353.0 | 368.1 | 1.15 | 1.15 | 0.07 |
| 8,839.2 | 89.42 | 272.54 | 7,154.5 | -432.5 | -367.8 | 382.9 | 1.09 | 1.08 | 0.13 |
| 8,854.0 | 89.58 | 272.57 | 7,154.6 | -431.9 | -382.6 | 397.7 | 1.10 | 1.08 | 0.20 |
| 8,868.8 | 89.72 | 272.63 | 7,154.7 | -431.2 | -397.4 | 412.5 | 1.03 | 0.94 | 0.40 |
| 8,883.7 | 89.85 | 272.70 | 7,154.8 | -430.5 | -412.3 | 427.3 | 0.99 | 0.88 | 0.47 |
| 8,898.5 | 89.97 | 272.77 | 7,154.8 | -429.8 | -427.1 | 442.1 | 0.94 | 0.81 | 0.47 |
| 8,913.3 | 90.08 | 272.83 | 7,154.8 | -429.1 | -441.9 | 456.8 | 0.84 | 0.74 | 0.40 |
| 8,928.2 | 90.17 | 272.87 | 7,154.7 | -428.3 | -456.7 | 471.6 | 0.66 | 0.61 | 0.27 |
| 8,943.0 | 88.79 | 273.13 | 7,154.9 | -427.5 | -471.5 | 486.4 | 9.47 | -9.31 | 1.75 |
| 8,958.0 | 88.82 | 273.07 | 7,155.2 | -426.7 | -486.5 | 501.3 | 0.45 | 0.20 | -0.40 |
| 8,973.0 | 88.83 | 272.98 | 7,155.5 | -425.9 | -501.5 | 516.3 | 0.60 | 0.07 | -0.60 |
| 8,988.0 | 88.84 | 272.88 | 7,155.8 | -425.2 | -516.4 | 531.2 | 0.67 | 0.07 | -0.67 |
| 9,003.0 | 88.85 | 272.78 | 7,156.1 | -424.4 | -531.4 | 546.2 | 0.67 | 0.07 | -0.67 |
| 9,018.0 | 88.79 | 272.60 | 7,156.4 | -423.7 | -546.4 | 561.1 | 1.26 | -0.40 | -1.20 |
| 9,033.0 | 87.69 | 271.49 | 7,156.9 | -423.2 | -561.4 | 576.1 | 10.42 | -7.33 | -7.40 |
| 9,048.0 | 87.79 | 271.42 | 7,157.5 | -422.8 | -576.4 | 591.0 | 0.81 | 0.67 | -0.47 |
| 9,063.0 | 87.92 | 271.36 | 7,158.0 | -422.5 | -591.4 | 606.0 | 0.95 | 0.87 | -0.40 |
| 9,078.0 | 88.06 | 271.30 | 7,158.6 | -422.1 | -606.3 | 620.9 | 1.02 | 0.93 | -0.40 |
| 9,093.0 | 88.20 | 271.25 | 7,159.0 | -421.8 | -621.3 | 635.9 | 0.99 | 0.93 | -0.33 |
| 9,108.0 | 88.35 | 271.21 | 7,159.5 | -421.4 | -636.3 | 650.9 | 1.03 | 1.00 | -0.27 |
| 9,123.0 | 88.50 | 271.18 | 7,159.9 | -421.1 | -651.3 | 665.8 | 1.02 | 1.00 | -0.20 |

Ensign Energy Services Inc.

Survey Report

| | | | |
|------------------|---|-------------------------------------|---------------------------------------|
| Company: | Bayswater Exploration & Production, LLC | Local Co-ordinate Reference: | Well Groves Farm O-34-33HC |
| Project: | SEC.34-T7N-R65W | TVD Reference: | RKB @ 4867.0ft (Ensign 153 RKB - 23') |
| Site: | Groves Farm 34-L Pad Sec.34-T7N-R65W | MD Reference: | RKB @ 4867.0ft (Ensign 153 RKB - 23') |
| Well: | Groves Farm O-34-33HC | North Reference: | True |
| Wellbore: | Groves Farms O-34-33HC Wellbore #1 | Survey Calculation Method: | Minimum Curvature |
| Design: | Groves Farms O-34-33HC Wellbore #1 | Database: | US_EDM |

| Survey | | | | | | | | | |
|---------------------|-----------------|-------------|---------------------|------------|------------|-----------------------|-------------------------|------------------------|-----------------------|
| Measured Depth (ft) | Inclination (°) | Azimuth (°) | Vertical Depth (ft) | +N/-S (ft) | +E/-W (ft) | Vertical Section (ft) | Dogleg Rate (°/100usft) | Build Rate (°/100usft) | Turn Rate (°/100usft) |
| 9,138.0 | 88.65 | 271.17 | 7,160.3 | -420.8 | -666.3 | 680.8 | 1.00 | 1.00 | -0.07 |
| 9,153.0 | 88.79 | 271.16 | 7,160.6 | -420.5 | -681.3 | 695.8 | 0.94 | 0.93 | -0.07 |
| 9,168.0 | 88.93 | 271.16 | 7,160.9 | -420.2 | -696.3 | 710.8 | 0.93 | 0.93 | 0.00 |
| 9,183.0 | 89.07 | 271.16 | 7,161.2 | -419.9 | -711.3 | 725.7 | 0.93 | 0.93 | 0.00 |
| 9,198.0 | 89.20 | 271.15 | 7,161.4 | -419.6 | -726.3 | 740.7 | 0.87 | 0.87 | -0.07 |
| 9,213.0 | 89.32 | 271.15 | 7,161.6 | -419.3 | -741.3 | 755.7 | 0.80 | 0.80 | 0.00 |
| 9,228.0 | 89.43 | 271.13 | 7,161.8 | -419.0 | -756.3 | 770.7 | 0.75 | 0.73 | -0.13 |
| 9,243.0 | 89.53 | 271.11 | 7,161.9 | -418.7 | -771.3 | 785.6 | 0.68 | 0.67 | -0.13 |
| 9,258.0 | 89.64 | 271.09 | 7,162.0 | -418.4 | -786.3 | 800.6 | 0.75 | 0.73 | -0.13 |
| 9,273.0 | 89.75 | 271.07 | 7,162.1 | -418.2 | -801.3 | 815.6 | 0.75 | 0.73 | -0.13 |
| 9,288.0 | 89.84 | 271.18 | 7,162.1 | -417.9 | -816.3 | 830.6 | 0.95 | 0.60 | 0.73 |
| 9,303.0 | 89.53 | 273.08 | 7,162.2 | -417.3 | -831.3 | 845.5 | 12.83 | -2.07 | 12.67 |
| 9,317.8 | 89.57 | 273.35 | 7,162.3 | -416.5 | -846.1 | 860.3 | 1.84 | 0.27 | 1.82 |
| 9,332.7 | 89.76 | 273.34 | 7,162.4 | -415.6 | -860.9 | 875.1 | 1.28 | 1.28 | -0.07 |
| 9,347.5 | 89.97 | 273.33 | 7,162.5 | -414.7 | -875.7 | 889.8 | 1.42 | 1.42 | -0.07 |
| 9,362.3 | 90.18 | 273.31 | 7,162.4 | -413.9 | -890.5 | 904.6 | 1.42 | 1.42 | -0.13 |
| 9,377.2 | 90.37 | 273.27 | 7,162.4 | -413.0 | -905.3 | 919.4 | 1.31 | 1.28 | -0.27 |
| 9,392.0 | 90.55 | 273.21 | 7,162.2 | -412.2 | -920.1 | 934.1 | 1.28 | 1.21 | -0.40 |
| 9,406.8 | 90.68 | 273.10 | 7,162.1 | -411.4 | -934.9 | 948.9 | 1.15 | 0.88 | -0.74 |
| 9,421.7 | 90.78 | 272.96 | 7,161.9 | -410.6 | -949.7 | 963.7 | 1.16 | 0.67 | -0.94 |
| 9,436.5 | 90.86 | 272.81 | 7,161.7 | -409.8 | -964.5 | 978.5 | 1.15 | 0.54 | -1.01 |
| 9,451.3 | 90.94 | 272.67 | 7,161.5 | -409.1 | -979.4 | 993.2 | 1.09 | 0.54 | -0.94 |
| 9,466.2 | 90.49 | 272.49 | 7,161.3 | -408.5 | -994.2 | 1,008.0 | 3.27 | -3.03 | -1.21 |
| 9,481.0 | 89.02 | 272.28 | 7,161.3 | -407.9 | -1,009.0 | 1,022.8 | 10.01 | -9.91 | -1.42 |
| 9,496.0 | 89.05 | 272.16 | 7,161.6 | -407.3 | -1,024.0 | 1,037.8 | 0.82 | 0.20 | -0.80 |
| 9,511.0 | 89.07 | 272.05 | 7,161.8 | -406.7 | -1,039.0 | 1,052.7 | 0.75 | 0.13 | -0.73 |
| 9,526.0 | 89.09 | 271.94 | 7,162.1 | -406.2 | -1,054.0 | 1,067.7 | 0.75 | 0.13 | -0.73 |
| 9,541.0 | 89.13 | 271.84 | 7,162.3 | -405.7 | -1,068.9 | 1,082.7 | 0.72 | 0.27 | -0.67 |
| 9,556.0 | 88.80 | 271.73 | 7,162.6 | -405.2 | -1,083.9 | 1,097.6 | 2.32 | -2.20 | -0.73 |
| 9,571.0 | 87.13 | 271.51 | 7,163.1 | -404.8 | -1,098.9 | 1,112.6 | 11.23 | -11.13 | -1.47 |
| 9,585.8 | 87.32 | 271.50 | 7,163.8 | -404.4 | -1,113.7 | 1,127.4 | 1.28 | 1.28 | -0.07 |
| 9,600.7 | 87.55 | 271.50 | 7,164.5 | -404.0 | -1,128.5 | 1,142.2 | 1.55 | 1.55 | 0.00 |
| 9,615.5 | 87.79 | 271.51 | 7,165.1 | -403.6 | -1,143.4 | 1,157.0 | 1.62 | 1.62 | 0.07 |
| 9,630.3 | 88.03 | 271.53 | 7,165.6 | -403.3 | -1,158.2 | 1,171.8 | 1.62 | 1.62 | 0.13 |
| 9,645.2 | 88.24 | 271.54 | 7,166.1 | -402.9 | -1,173.0 | 1,186.6 | 1.42 | 1.42 | 0.07 |
| 9,660.0 | 88.77 | 271.64 | 7,166.5 | -402.4 | -1,187.8 | 1,201.3 | 3.64 | 3.57 | 0.67 |
| 9,674.8 | 90.73 | 272.08 | 7,166.6 | -402.0 | -1,202.6 | 1,216.1 | 13.55 | 13.22 | 2.97 |
| 9,689.7 | 90.87 | 272.18 | 7,166.4 | -401.4 | -1,217.5 | 1,230.9 | 1.16 | 0.94 | 0.67 |
| 9,704.5 | 90.85 | 272.20 | 7,166.1 | -400.8 | -1,232.3 | 1,245.7 | 0.19 | -0.13 | 0.13 |
| 9,719.3 | 90.82 | 272.21 | 7,165.9 | -400.3 | -1,247.1 | 1,260.5 | 0.21 | -0.20 | 0.07 |
| 9,734.2 | 90.80 | 272.20 | 7,165.7 | -399.7 | -1,261.9 | 1,275.3 | 0.15 | -0.13 | -0.07 |
| 9,749.0 | 90.80 | 272.18 | 7,165.5 | -399.1 | -1,276.7 | 1,290.1 | 0.13 | 0.00 | -0.13 |
| 9,763.8 | 90.86 | 272.11 | 7,165.3 | -398.6 | -1,291.6 | 1,304.9 | 0.62 | 0.40 | -0.47 |

Ensign Energy Services Inc.

Survey Report

| | | | |
|------------------|---|-------------------------------------|---------------------------------------|
| Company: | Bayswater Exploration & Production, LLC | Local Co-ordinate Reference: | Well Groves Farm O-34-33HC |
| Project: | SEC.34-T7N-R65W | TVD Reference: | RKB @ 4867.0ft (Ensign 153 RKB - 23') |
| Site: | Groves Farm 34-L Pad Sec.34-T7N-R65W | MD Reference: | RKB @ 4867.0ft (Ensign 153 RKB - 23') |
| Well: | Groves Farm O-34-33HC | North Reference: | True |
| Wellbore: | Groves Farms O-34-33HC Wellbore #1 | Survey Calculation Method: | Minimum Curvature |
| Design: | Groves Farms O-34-33HC Wellbore #1 | Database: | US_EDM |

| Survey | | | | | | | | | | |
|---------------------|-----------------|-------------|---------------------|------------|------------|-----------------------|-------------------------|------------------------|-----------------------|--|
| Measured Depth (ft) | Inclination (°) | Azimuth (°) | Vertical Depth (ft) | +N/-S (ft) | +E/-W (ft) | Vertical Section (ft) | Dogleg Rate (°/100usft) | Build Rate (°/100usft) | Turn Rate (°/100usft) | |
| 9,778.7 | 90.94 | 272.02 | 7,165.1 | -398.0 | -1,306.4 | 1,319.7 | 0.81 | 0.54 | -0.61 | |
| 9,793.5 | 91.05 | 271.92 | 7,164.8 | -397.5 | -1,321.2 | 1,334.5 | 1.00 | 0.74 | -0.67 | |
| 9,808.3 | 91.15 | 271.82 | 7,164.5 | -397.1 | -1,336.0 | 1,349.3 | 0.95 | 0.67 | -0.67 | |
| 9,823.2 | 91.24 | 271.73 | 7,164.2 | -396.6 | -1,350.9 | 1,364.1 | 0.86 | 0.61 | -0.61 | |
| 9,838.0 | 89.55 | 272.49 | 7,164.1 | -396.0 | -1,365.7 | 1,378.9 | 12.50 | -11.40 | 5.12 | |
| 9,852.8 | 89.57 | 272.46 | 7,164.2 | -395.4 | -1,380.5 | 1,393.7 | 0.24 | 0.13 | -0.20 | |
| 9,867.7 | 89.57 | 272.43 | 7,164.3 | -394.8 | -1,395.3 | 1,408.5 | 0.20 | 0.00 | -0.20 | |
| 9,882.5 | 89.56 | 272.42 | 7,164.4 | -394.1 | -1,410.1 | 1,423.2 | 0.10 | -0.07 | -0.07 | |
| 9,897.3 | 89.56 | 272.41 | 7,164.6 | -393.5 | -1,425.0 | 1,438.0 | 0.07 | 0.00 | -0.07 | |
| 9,912.2 | 89.57 | 272.41 | 7,164.7 | -392.9 | -1,439.8 | 1,452.8 | 0.07 | 0.07 | 0.00 | |
| 9,927.0 | 88.13 | 272.92 | 7,165.0 | -392.2 | -1,454.6 | 1,467.6 | 10.30 | -9.71 | 3.44 | |
| 9,942.0 | 88.19 | 272.92 | 7,165.4 | -391.4 | -1,469.6 | 1,482.5 | 0.40 | 0.40 | 0.00 | |
| 9,957.0 | 88.28 | 272.92 | 7,165.9 | -390.7 | -1,484.5 | 1,497.5 | 0.60 | 0.60 | 0.00 | |
| 9,972.0 | 88.38 | 272.92 | 7,166.3 | -389.9 | -1,499.5 | 1,512.4 | 0.67 | 0.67 | 0.00 | |
| 9,987.0 | 88.49 | 272.92 | 7,166.8 | -389.2 | -1,514.5 | 1,527.3 | 0.73 | 0.73 | 0.00 | |
| 10,002.0 | 88.62 | 272.93 | 7,167.1 | -388.4 | -1,529.5 | 1,542.3 | 0.87 | 0.87 | 0.07 | |
| 10,017.0 | 88.76 | 272.93 | 7,167.5 | -387.6 | -1,544.4 | 1,557.2 | 0.93 | 0.93 | 0.00 | |
| 10,031.8 | 88.93 | 272.94 | 7,167.8 | -386.9 | -1,559.2 | 1,572.0 | 1.15 | 1.15 | 0.07 | |
| 10,046.7 | 89.10 | 272.94 | 7,168.0 | -386.1 | -1,574.1 | 1,586.8 | 1.15 | 1.15 | 0.00 | |
| 10,061.5 | 89.28 | 272.94 | 7,168.2 | -385.3 | -1,588.9 | 1,601.5 | 1.21 | 1.21 | 0.00 | |
| 10,076.3 | 89.46 | 272.94 | 7,168.4 | -384.6 | -1,603.7 | 1,616.3 | 1.21 | 1.21 | 0.00 | |
| 10,091.2 | 89.62 | 272.92 | 7,168.5 | -383.8 | -1,618.5 | 1,631.1 | 1.09 | 1.08 | -0.13 | |
| 10,106.0 | 89.76 | 272.89 | 7,168.6 | -383.1 | -1,633.3 | 1,645.9 | 0.97 | 0.94 | -0.20 | |
| 10,121.0 | 89.84 | 272.83 | 7,168.7 | -382.3 | -1,648.3 | 1,660.8 | 0.67 | 0.53 | -0.40 | |
| 10,136.0 | 89.90 | 272.76 | 7,168.7 | -381.6 | -1,663.3 | 1,675.8 | 0.61 | 0.40 | -0.47 | |
| 10,151.0 | 89.95 | 272.69 | 7,168.7 | -380.9 | -1,678.3 | 1,690.7 | 0.57 | 0.33 | -0.47 | |
| 10,166.0 | 89.99 | 272.63 | 7,168.7 | -380.2 | -1,693.2 | 1,705.7 | 0.48 | 0.27 | -0.40 | |
| 10,181.0 | 89.79 | 272.43 | 7,168.7 | -379.5 | -1,708.2 | 1,720.6 | 1.89 | -1.33 | -1.33 | |
| 10,196.0 | 88.85 | 271.83 | 7,168.9 | -379.0 | -1,723.2 | 1,735.6 | 7.43 | -6.27 | -4.00 | |
| 10,211.0 | 88.94 | 271.84 | 7,169.2 | -378.5 | -1,738.2 | 1,750.5 | 0.60 | 0.60 | 0.07 | |
| 10,226.0 | 89.03 | 271.87 | 7,169.5 | -378.0 | -1,753.2 | 1,765.5 | 0.63 | 0.60 | 0.20 | |
| 10,241.0 | 89.13 | 271.91 | 7,169.7 | -377.5 | -1,768.2 | 1,780.5 | 0.72 | 0.67 | 0.27 | |
| 10,256.0 | 89.22 | 271.96 | 7,169.9 | -377.0 | -1,783.2 | 1,795.4 | 0.69 | 0.60 | 0.33 | |
| 10,271.0 | 89.30 | 272.00 | 7,170.1 | -376.5 | -1,798.2 | 1,810.4 | 0.60 | 0.53 | 0.27 | |
| 10,286.0 | 89.36 | 272.04 | 7,170.3 | -375.9 | -1,813.2 | 1,825.4 | 0.48 | 0.40 | 0.27 | |
| 10,300.8 | 89.39 | 272.06 | 7,170.5 | -375.4 | -1,828.0 | 1,840.1 | 0.24 | 0.20 | 0.13 | |
| 10,315.7 | 89.40 | 272.07 | 7,170.6 | -374.9 | -1,842.8 | 1,854.9 | 0.10 | 0.07 | 0.07 | |
| 10,330.5 | 89.41 | 272.08 | 7,170.8 | -374.3 | -1,857.6 | 1,869.7 | 0.10 | 0.07 | 0.07 | |
| 10,345.3 | 89.42 | 272.08 | 7,170.9 | -373.8 | -1,872.4 | 1,884.5 | 0.07 | 0.07 | 0.00 | |
| 10,360.2 | 89.45 | 272.08 | 7,171.1 | -373.3 | -1,887.3 | 1,899.3 | 0.20 | 0.20 | 0.00 | |
| 10,375.0 | 88.08 | 271.87 | 7,171.4 | -372.8 | -1,902.1 | 1,914.1 | 9.35 | -9.24 | -1.42 | |
| 10,389.8 | 88.18 | 271.86 | 7,171.9 | -372.3 | -1,916.9 | 1,928.9 | 0.68 | 0.67 | -0.07 | |
| 10,404.7 | 88.31 | 271.83 | 7,172.3 | -371.8 | -1,931.7 | 1,943.7 | 0.90 | 0.88 | -0.20 | |

Ensign Energy Services Inc.

Survey Report

| | | | |
|------------------|---|-------------------------------------|---------------------------------------|
| Company: | Bayswater Exploration & Production, LLC | Local Co-ordinate Reference: | Well Groves Farm O-34-33HC |
| Project: | SEC.34-T7N-R65W | TVD Reference: | RKB @ 4867.0ft (Ensign 153 RKB - 23') |
| Site: | Groves Farm 34-L Pad Sec.34-T7N-R65W | MD Reference: | RKB @ 4867.0ft (Ensign 153 RKB - 23') |
| Well: | Groves Farm O-34-33HC | North Reference: | True |
| Wellbore: | Groves Farms O-34-33HC Wellbore #1 | Survey Calculation Method: | Minimum Curvature |
| Design: | Groves Farms O-34-33HC Wellbore #1 | Database: | US_EDM |

| Survey | | | | | | | | | | |
|---------------------|-----------------|-------------|---------------------|------------|------------|-----------------------|-------------------------|------------------------|-----------------------|--|
| Measured Depth (ft) | Inclination (°) | Azimuth (°) | Vertical Depth (ft) | +N/-S (ft) | +E/-W (ft) | Vertical Section (ft) | Dogleg Rate (°/100usft) | Build Rate (°/100usft) | Turn Rate (°/100usft) | |
| 10,419.5 | 88.44 | 271.81 | 7,172.8 | -371.3 | -1,946.6 | 1,958.5 | 0.89 | 0.88 | -0.13 | |
| 10,434.3 | 88.59 | 271.79 | 7,173.1 | -370.9 | -1,961.4 | 1,973.3 | 1.02 | 1.01 | -0.13 | |
| 10,449.2 | 88.74 | 271.76 | 7,173.5 | -370.4 | -1,976.2 | 1,988.1 | 1.03 | 1.01 | -0.20 | |
| 10,464.0 | 88.89 | 271.73 | 7,173.8 | -369.9 | -1,991.0 | 2,002.9 | 1.03 | 1.01 | -0.20 | |
| 10,478.8 | 89.03 | 271.71 | 7,174.1 | -369.5 | -2,005.8 | 2,017.7 | 0.95 | 0.94 | -0.13 | |
| 10,493.7 | 89.17 | 271.68 | 7,174.3 | -369.1 | -2,020.7 | 2,032.5 | 0.96 | 0.94 | -0.20 | |
| 10,508.5 | 89.31 | 271.65 | 7,174.5 | -368.6 | -2,035.5 | 2,047.3 | 0.97 | 0.94 | -0.20 | |
| 10,523.3 | 89.45 | 271.62 | 7,174.7 | -368.2 | -2,050.3 | 2,062.1 | 0.97 | 0.94 | -0.20 | |
| 10,538.2 | 89.58 | 271.59 | 7,174.8 | -367.8 | -2,065.1 | 2,076.9 | 0.90 | 0.88 | -0.20 | |
| 10,553.0 | 89.70 | 271.56 | 7,174.9 | -367.4 | -2,080.0 | 2,091.7 | 0.83 | 0.81 | -0.20 | |
| 10,567.8 | 89.81 | 271.53 | 7,174.9 | -367.0 | -2,094.8 | 2,106.5 | 0.77 | 0.74 | -0.20 | |
| 10,582.7 | 89.92 | 271.51 | 7,175.0 | -366.6 | -2,109.6 | 2,121.3 | 0.75 | 0.74 | -0.13 | |
| 10,597.5 | 90.02 | 271.48 | 7,175.0 | -366.2 | -2,124.5 | 2,136.1 | 0.70 | 0.67 | -0.20 | |
| 10,612.3 | 90.11 | 271.46 | 7,175.0 | -365.8 | -2,139.3 | 2,150.9 | 0.62 | 0.61 | -0.13 | |
| 10,627.2 | 90.21 | 271.44 | 7,174.9 | -365.5 | -2,154.1 | 2,165.7 | 0.69 | 0.67 | -0.13 | |
| 10,642.0 | 90.30 | 271.44 | 7,174.9 | -365.1 | -2,168.9 | 2,180.5 | 0.61 | 0.61 | 0.00 | |
| 10,656.8 | 90.40 | 271.45 | 7,174.8 | -364.7 | -2,183.8 | 2,195.3 | 0.68 | 0.67 | 0.07 | |
| 10,671.7 | 90.49 | 271.48 | 7,174.6 | -364.3 | -2,198.6 | 2,210.1 | 0.64 | 0.61 | 0.20 | |
| 10,686.5 | 90.59 | 271.50 | 7,174.5 | -363.9 | -2,213.4 | 2,224.9 | 0.69 | 0.67 | 0.13 | |
| 10,701.3 | 90.69 | 271.54 | 7,174.3 | -363.5 | -2,228.3 | 2,239.7 | 0.73 | 0.67 | 0.27 | |
| 10,716.2 | 90.90 | 271.63 | 7,174.1 | -363.1 | -2,243.1 | 2,254.6 | 1.54 | 1.42 | 0.61 | |
| 10,731.0 | 91.94 | 272.17 | 7,173.8 | -362.6 | -2,257.9 | 2,269.3 | 7.90 | 7.01 | 3.64 | |
| 10,746.0 | 92.07 | 272.20 | 7,173.2 | -362.1 | -2,272.9 | 2,284.3 | 0.89 | 0.87 | 0.20 | |
| 10,761.0 | 92.20 | 272.22 | 7,172.7 | -361.5 | -2,287.9 | 2,299.2 | 0.88 | 0.87 | 0.13 | |
| 10,776.0 | 92.34 | 272.24 | 7,172.1 | -360.9 | -2,302.8 | 2,314.2 | 0.94 | 0.93 | 0.13 | |
| 10,791.0 | 92.49 | 272.25 | 7,171.5 | -360.3 | -2,317.8 | 2,329.1 | 1.00 | 1.00 | 0.07 | |
| 10,806.0 | 92.63 | 272.26 | 7,170.8 | -359.7 | -2,332.8 | 2,344.1 | 0.94 | 0.93 | 0.07 | |
| 10,821.0 | 92.77 | 272.24 | 7,170.1 | -359.1 | -2,347.8 | 2,359.0 | 0.94 | 0.93 | -0.13 | |
| 10,835.8 | 92.91 | 272.21 | 7,169.3 | -358.6 | -2,362.6 | 2,373.8 | 0.97 | 0.94 | -0.20 | |
| 10,850.7 | 93.05 | 272.16 | 7,168.6 | -358.0 | -2,377.4 | 2,388.6 | 1.00 | 0.94 | -0.34 | |
| 10,865.5 | 93.18 | 272.11 | 7,167.8 | -357.5 | -2,392.2 | 2,403.3 | 0.94 | 0.88 | -0.34 | |
| 10,880.3 | 93.31 | 272.06 | 7,166.9 | -356.9 | -2,407.0 | 2,418.1 | 0.94 | 0.88 | -0.34 | |
| 10,895.2 | 93.23 | 271.94 | 7,166.1 | -356.4 | -2,421.8 | 2,432.9 | 0.97 | -0.54 | -0.81 | |
| 10,910.0 | 92.07 | 271.41 | 7,165.4 | -356.0 | -2,436.6 | 2,447.7 | 8.60 | -7.82 | -3.57 | |
| 10,925.0 | 92.19 | 271.42 | 7,164.8 | -355.6 | -2,451.6 | 2,462.6 | 0.80 | 0.80 | 0.07 | |
| 10,940.0 | 92.31 | 271.45 | 7,164.3 | -355.2 | -2,466.5 | 2,477.6 | 0.82 | 0.80 | 0.20 | |
| 10,955.0 | 92.42 | 271.48 | 7,163.6 | -354.8 | -2,481.5 | 2,492.6 | 0.76 | 0.73 | 0.20 | |
| 10,970.0 | 92.53 | 271.51 | 7,163.0 | -354.4 | -2,496.5 | 2,507.5 | 0.76 | 0.73 | 0.20 | |
| 10,985.0 | 92.41 | 271.20 | 7,162.3 | -354.1 | -2,511.5 | 2,522.5 | 2.21 | -0.80 | -2.07 | |
| 11,000.0 | 91.48 | 270.61 | 7,161.8 | -353.9 | -2,526.5 | 2,537.4 | 7.34 | -6.20 | -3.93 | |
| 11,015.0 | 91.28 | 270.74 | 7,161.5 | -353.7 | -2,541.5 | 2,552.4 | 1.59 | -1.33 | 0.87 | |
| 11,030.0 | 91.28 | 270.71 | 7,161.1 | -353.5 | -2,556.5 | 2,567.4 | 0.20 | 0.00 | -0.20 | |
| 11,045.0 | 91.28 | 270.68 | 7,160.8 | -353.3 | -2,571.5 | 2,582.4 | 0.20 | 0.00 | -0.20 | |
| 11,060.0 | 91.30 | 270.66 | 7,160.5 | -353.1 | -2,586.5 | 2,597.4 | 0.19 | 0.13 | -0.13 | |

Ensign Energy Services Inc.

Survey Report

| | | | |
|------------------|---|-------------------------------------|---------------------------------------|
| Company: | Bayswater Exploration & Production, LLC | Local Co-ordinate Reference: | Well Groves Farm O-34-33HC |
| Project: | SEC.34-T7N-R65W | TVD Reference: | RKB @ 4867.0ft (Ensign 153 RKB - 23') |
| Site: | Groves Farm 34-L Pad Sec.34-T7N-R65W | MD Reference: | RKB @ 4867.0ft (Ensign 153 RKB - 23') |
| Well: | Groves Farm O-34-33HC | North Reference: | True |
| Wellbore: | Groves Farms O-34-33HC Wellbore #1 | Survey Calculation Method: | Minimum Curvature |
| Design: | Groves Farms O-34-33HC Wellbore #1 | Database: | US_EDM |

| Survey | | | | | | | | | |
|---------------------|-----------------|-------------|---------------------|------------|------------|-----------------------|-------------------------|------------------------|-----------------------|
| Measured Depth (ft) | Inclination (°) | Azimuth (°) | Vertical Depth (ft) | +N/-S (ft) | +E/-W (ft) | Vertical Section (ft) | Dogleg Rate (°/100usft) | Build Rate (°/100usft) | Turn Rate (°/100usft) |
| 11,075.0 | 91.35 | 270.66 | 7,160.1 | -353.0 | -2,601.5 | 2,612.3 | 0.33 | 0.33 | 0.00 |
| 11,090.0 | 89.62 | 270.99 | 7,160.0 | -352.7 | -2,616.4 | 2,627.3 | 11.74 | -11.53 | 2.20 |
| 11,104.8 | 89.54 | 271.09 | 7,160.1 | -352.5 | -2,631.3 | 2,642.1 | 0.86 | -0.54 | 0.67 |
| 11,119.7 | 89.76 | 271.17 | 7,160.2 | -352.2 | -2,646.1 | 2,656.9 | 1.58 | 1.48 | 0.54 |
| 11,134.5 | 90.00 | 271.27 | 7,160.2 | -351.9 | -2,660.9 | 2,671.7 | 1.75 | 1.62 | 0.67 |
| 11,149.3 | 90.25 | 271.37 | 7,160.2 | -351.5 | -2,675.8 | 2,686.6 | 1.82 | 1.69 | 0.67 |
| 11,164.2 | 90.49 | 271.47 | 7,160.1 | -351.2 | -2,690.6 | 2,701.4 | 1.75 | 1.62 | 0.67 |
| 11,179.0 | 90.71 | 271.57 | 7,159.9 | -350.8 | -2,705.4 | 2,716.2 | 1.63 | 1.48 | 0.67 |
| 11,193.8 | 90.88 | 271.65 | 7,159.7 | -350.3 | -2,720.2 | 2,731.0 | 1.27 | 1.15 | 0.54 |
| 11,208.7 | 91.03 | 271.72 | 7,159.5 | -349.9 | -2,735.1 | 2,745.8 | 1.12 | 1.01 | 0.47 |
| 11,223.5 | 91.16 | 271.79 | 7,159.2 | -349.5 | -2,749.9 | 2,760.6 | 1.00 | 0.88 | 0.47 |
| 11,238.3 | 91.29 | 271.86 | 7,158.9 | -349.0 | -2,764.7 | 2,775.4 | 1.00 | 0.88 | 0.47 |
| 11,253.2 | 91.43 | 271.92 | 7,158.5 | -348.5 | -2,779.5 | 2,790.2 | 1.03 | 0.94 | 0.40 |
| 11,268.0 | 89.76 | 271.78 | 7,158.4 | -348.0 | -2,794.4 | 2,805.0 | 11.30 | -11.26 | -0.94 |
| 11,282.8 | 89.52 | 271.80 | 7,158.5 | -347.6 | -2,809.2 | 2,819.8 | 1.62 | -1.62 | 0.13 |
| 11,297.7 | 89.74 | 271.88 | 7,158.6 | -347.1 | -2,824.0 | 2,834.6 | 1.58 | 1.48 | 0.54 |
| 11,312.5 | 89.97 | 271.96 | 7,158.6 | -346.6 | -2,838.8 | 2,849.4 | 1.64 | 1.55 | 0.54 |
| 11,327.3 | 90.18 | 272.04 | 7,158.6 | -346.1 | -2,853.7 | 2,864.1 | 1.52 | 1.42 | 0.54 |
| 11,342.2 | 90.36 | 272.12 | 7,158.5 | -345.5 | -2,868.5 | 2,878.9 | 1.33 | 1.21 | 0.54 |
| 11,357.0 | 90.48 | 272.19 | 7,158.4 | -345.0 | -2,883.3 | 2,893.7 | 0.94 | 0.81 | 0.47 |
| 11,372.0 | 90.50 | 272.24 | 7,158.3 | -344.4 | -2,898.3 | 2,908.7 | 0.36 | 0.13 | 0.33 |
| 11,387.0 | 90.46 | 272.28 | 7,158.1 | -343.8 | -2,913.3 | 2,923.7 | 0.38 | -0.27 | 0.27 |
| 11,402.0 | 90.40 | 272.31 | 7,158.0 | -343.2 | -2,928.3 | 2,938.6 | 0.45 | -0.40 | 0.20 |
| 11,417.0 | 90.34 | 272.33 | 7,157.9 | -342.6 | -2,943.3 | 2,953.6 | 0.42 | -0.40 | 0.13 |
| 11,432.0 | 90.31 | 272.33 | 7,157.9 | -342.0 | -2,958.3 | 2,968.5 | 0.20 | -0.20 | 0.00 |
| 11,447.0 | 88.80 | 272.19 | 7,158.0 | -341.4 | -2,973.2 | 2,983.5 | 10.11 | -10.07 | -0.93 |
| 11,461.8 | 87.89 | 272.14 | 7,158.4 | -340.8 | -2,988.1 | 2,998.3 | 6.15 | -6.14 | -0.34 |
| 11,476.7 | 88.03 | 272.05 | 7,158.9 | -340.3 | -3,002.9 | 3,013.1 | 1.12 | 0.94 | -0.61 |
| 11,491.5 | 88.20 | 271.95 | 7,159.4 | -339.8 | -3,017.7 | 3,027.8 | 1.33 | 1.15 | -0.67 |
| 11,506.3 | 88.38 | 271.84 | 7,159.9 | -339.3 | -3,032.5 | 3,042.6 | 1.42 | 1.21 | -0.74 |
| 11,521.2 | 88.57 | 271.73 | 7,160.3 | -338.8 | -3,047.3 | 3,057.4 | 1.48 | 1.28 | -0.74 |
| 11,536.0 | 88.76 | 271.65 | 7,160.6 | -338.4 | -3,062.1 | 3,072.2 | 1.39 | 1.28 | -0.54 |
| 11,551.0 | 88.93 | 271.61 | 7,160.9 | -337.9 | -3,077.1 | 3,087.2 | 1.16 | 1.13 | -0.27 |
| 11,566.0 | 89.10 | 271.58 | 7,161.2 | -337.5 | -3,092.1 | 3,102.2 | 1.15 | 1.13 | -0.20 |
| 11,581.0 | 89.26 | 271.57 | 7,161.4 | -337.1 | -3,107.1 | 3,117.1 | 1.07 | 1.07 | -0.07 |
| 11,596.0 | 89.42 | 271.56 | 7,161.5 | -336.7 | -3,122.1 | 3,132.1 | 1.07 | 1.07 | -0.07 |
| 11,611.0 | 89.58 | 271.56 | 7,161.7 | -336.3 | -3,137.1 | 3,147.1 | 1.07 | 1.07 | 0.00 |
| 11,626.0 | 89.74 | 271.55 | 7,161.8 | -335.9 | -3,152.1 | 3,162.0 | 1.07 | 1.07 | -0.07 |
| 11,641.0 | 89.92 | 271.53 | 7,161.8 | -335.5 | -3,167.1 | 3,177.0 | 1.21 | 1.20 | -0.13 |
| 11,656.0 | 90.10 | 271.51 | 7,161.8 | -335.1 | -3,182.1 | 3,192.0 | 1.21 | 1.20 | -0.13 |
| 11,671.0 | 90.27 | 271.48 | 7,161.8 | -334.7 | -3,197.1 | 3,207.0 | 1.15 | 1.13 | -0.20 |
| 11,686.0 | 90.44 | 271.44 | 7,161.7 | -334.3 | -3,212.1 | 3,221.9 | 1.16 | 1.13 | -0.27 |
| 11,701.0 | 90.58 | 271.41 | 7,161.5 | -333.9 | -3,227.1 | 3,236.9 | 0.95 | 0.93 | -0.20 |

Ensign Energy Services Inc.

Survey Report

| | | | |
|------------------|---|-------------------------------------|---------------------------------------|
| Company: | Bayswater Exploration & Production, LLC | Local Co-ordinate Reference: | Well Groves Farm O-34-33HC |
| Project: | SEC.34-T7N-R65W | TVD Reference: | RKB @ 4867.0ft (Ensign 153 RKB - 23') |
| Site: | Groves Farm 34-L Pad Sec.34-T7N-R65W | MD Reference: | RKB @ 4867.0ft (Ensign 153 RKB - 23') |
| Well: | Groves Farm O-34-33HC | North Reference: | True |
| Wellbore: | Groves Farms O-34-33HC Wellbore #1 | Survey Calculation Method: | Minimum Curvature |
| Design: | Groves Farms O-34-33HC Wellbore #1 | Database: | US_EDM |

| Survey | | | | | | | | | | |
|---------------------|-----------------|-------------|---------------------|------------|------------|-----------------------|-------------------------|------------------------|-----------------------|--|
| Measured Depth (ft) | Inclination (°) | Azimuth (°) | Vertical Depth (ft) | +N/-S (ft) | +E/-W (ft) | Vertical Section (ft) | Dogleg Rate (°/100usft) | Build Rate (°/100usft) | Turn Rate (°/100usft) | |
| 11,716.0 | 90.70 | 271.36 | 7,161.4 | -333.6 | -3,242.1 | 3,251.9 | 0.87 | 0.80 | -0.33 | |
| 11,730.8 | 90.77 | 271.31 | 7,161.2 | -333.2 | -3,256.9 | 3,266.7 | 0.58 | 0.47 | -0.34 | |
| 11,745.7 | 90.81 | 271.26 | 7,161.0 | -332.9 | -3,271.7 | 3,281.5 | 0.43 | 0.27 | -0.34 | |
| 11,760.5 | 90.83 | 271.20 | 7,160.8 | -332.6 | -3,286.6 | 3,296.3 | 0.43 | 0.13 | -0.40 | |
| 11,775.3 | 90.86 | 271.14 | 7,160.5 | -332.3 | -3,301.4 | 3,311.1 | 0.45 | 0.20 | -0.40 | |
| 11,790.2 | 90.91 | 271.07 | 7,160.3 | -332.0 | -3,316.2 | 3,325.9 | 0.58 | 0.34 | -0.47 | |
| 11,805.0 | 89.24 | 271.59 | 7,160.3 | -331.7 | -3,331.0 | 3,340.7 | 11.79 | -11.26 | 3.51 | |
| 11,820.0 | 88.67 | 271.20 | 7,160.6 | -331.3 | -3,346.0 | 3,355.7 | 4.60 | -3.80 | -2.60 | |
| 11,835.0 | 88.81 | 271.11 | 7,160.9 | -331.0 | -3,361.0 | 3,370.7 | 1.11 | 0.93 | -0.60 | |
| 11,850.0 | 88.96 | 271.02 | 7,161.2 | -330.7 | -3,376.0 | 3,385.6 | 1.17 | 1.00 | -0.60 | |
| 11,865.0 | 89.12 | 270.93 | 7,161.4 | -330.5 | -3,391.0 | 3,400.6 | 1.22 | 1.07 | -0.60 | |
| 11,880.0 | 89.26 | 270.84 | 7,161.6 | -330.2 | -3,406.0 | 3,415.6 | 1.11 | 0.93 | -0.60 | |
| 11,895.0 | 89.37 | 270.76 | 7,161.8 | -330.0 | -3,421.0 | 3,430.6 | 0.91 | 0.73 | -0.53 | |
| 11,910.0 | 89.44 | 270.71 | 7,162.0 | -329.8 | -3,436.0 | 3,445.6 | 0.57 | 0.47 | -0.33 | |
| 11,925.0 | 89.47 | 270.66 | 7,162.1 | -329.6 | -3,451.0 | 3,460.5 | 0.39 | 0.20 | -0.33 | |
| 11,940.0 | 89.49 | 270.63 | 7,162.3 | -329.5 | -3,466.0 | 3,475.5 | 0.24 | 0.13 | -0.20 | |
| 11,955.0 | 89.50 | 270.59 | 7,162.4 | -329.3 | -3,481.0 | 3,490.5 | 0.27 | 0.07 | -0.27 | |
| 11,970.0 | 89.52 | 270.55 | 7,162.5 | -329.2 | -3,496.0 | 3,505.5 | 0.30 | 0.13 | -0.27 | |
| 11,985.0 | 88.17 | 270.61 | 7,162.8 | -329.0 | -3,511.0 | 3,520.5 | 9.01 | -9.00 | 0.40 | |
| 11,999.8 | 88.22 | 270.56 | 7,163.3 | -328.9 | -3,525.8 | 3,535.3 | 0.48 | 0.34 | -0.34 | |
| 12,014.7 | 88.28 | 270.50 | 7,163.7 | -328.7 | -3,540.7 | 3,550.1 | 0.57 | 0.40 | -0.40 | |
| 12,029.5 | 88.35 | 270.44 | 7,164.2 | -328.6 | -3,555.5 | 3,564.9 | 0.62 | 0.47 | -0.40 | |
| 12,044.3 | 88.42 | 270.38 | 7,164.6 | -328.5 | -3,570.3 | 3,579.7 | 0.62 | 0.47 | -0.40 | |
| 12,059.2 | 88.48 | 270.33 | 7,165.0 | -328.4 | -3,585.1 | 3,594.5 | 0.53 | 0.40 | -0.34 | |
| 12,074.0 | 88.54 | 270.29 | 7,165.4 | -328.3 | -3,600.0 | 3,609.3 | 0.49 | 0.40 | -0.27 | |
| 12,089.0 | 88.60 | 270.26 | 7,165.8 | -328.3 | -3,615.0 | 3,624.3 | 0.45 | 0.40 | -0.20 | |
| 12,104.0 | 88.64 | 270.25 | 7,166.1 | -328.2 | -3,630.0 | 3,639.3 | 0.27 | 0.27 | -0.07 | |
| 12,119.0 | 88.68 | 270.24 | 7,166.5 | -328.1 | -3,645.0 | 3,654.3 | 0.27 | 0.27 | -0.07 | |
| 12,134.0 | 88.70 | 270.25 | 7,166.8 | -328.1 | -3,659.9 | 3,669.3 | 0.15 | 0.13 | 0.07 | |
| 12,149.0 | 88.72 | 270.27 | 7,167.2 | -328.0 | -3,674.9 | 3,684.3 | 0.19 | 0.13 | 0.13 | |
| 12,164.0 | 88.72 | 270.32 | 7,167.5 | -327.9 | -3,689.9 | 3,699.2 | 0.33 | 0.00 | 0.33 | |
| 12,179.0 | 88.70 | 270.40 | 7,167.8 | -327.8 | -3,704.9 | 3,714.2 | 0.55 | -0.13 | 0.53 | |
| 12,194.0 | 88.67 | 270.50 | 7,168.2 | -327.7 | -3,719.9 | 3,729.2 | 0.70 | -0.20 | 0.67 | |
| 12,209.0 | 88.63 | 270.61 | 7,168.5 | -327.6 | -3,734.9 | 3,744.2 | 0.78 | -0.27 | 0.73 | |
| 12,224.0 | 88.59 | 270.71 | 7,168.9 | -327.4 | -3,749.9 | 3,759.2 | 0.72 | -0.27 | 0.67 | |
| 12,239.0 | 88.53 | 271.49 | 7,169.3 | -327.1 | -3,764.9 | 3,774.1 | 5.21 | -0.40 | 5.20 | |
| 12,254.0 | 88.41 | 273.21 | 7,169.7 | -326.5 | -3,779.9 | 3,789.1 | 11.49 | -0.80 | 11.47 | |
| 12,268.8 | 88.39 | 273.24 | 7,170.1 | -325.6 | -3,794.7 | 3,803.9 | 0.24 | -0.13 | 0.20 | |
| 12,283.7 | 88.37 | 273.27 | 7,170.5 | -324.8 | -3,809.5 | 3,818.6 | 0.24 | -0.13 | 0.20 | |
| 12,298.5 | 88.35 | 273.28 | 7,170.9 | -324.0 | -3,824.3 | 3,833.4 | 0.15 | -0.13 | 0.07 | |
| 12,313.3 | 88.32 | 273.29 | 7,171.4 | -323.1 | -3,839.1 | 3,848.1 | 0.21 | -0.20 | 0.07 | |
| 12,328.2 | 88.28 | 273.29 | 7,171.8 | -322.3 | -3,853.9 | 3,862.9 | 0.27 | -0.27 | 0.00 | |
| 12,343.0 | 88.23 | 273.29 | 7,172.2 | -321.4 | -3,868.7 | 3,877.7 | 0.34 | -0.34 | 0.00 | |

Ensign Energy Services Inc.

Survey Report

| | | | |
|------------------|---|-------------------------------------|---------------------------------------|
| Company: | Bayswater Exploration & Production, LLC | Local Co-ordinate Reference: | Well Groves Farm O-34-33HC |
| Project: | SEC.34-T7N-R65W | TVD Reference: | RKB @ 4867.0ft (Ensign 153 RKB - 23') |
| Site: | Groves Farm 34-L Pad Sec.34-T7N-R65W | MD Reference: | RKB @ 4867.0ft (Ensign 153 RKB - 23') |
| Well: | Groves Farm O-34-33HC | North Reference: | True |
| Wellbore: | Groves Farms O-34-33HC Wellbore #1 | Survey Calculation Method: | Minimum Curvature |
| Design: | Groves Farms O-34-33HC Wellbore #1 | Database: | US_EDM |

| Survey | | | | | | | | | |
|---------------------|-----------------|-------------|---------------------|------------|------------|-----------------------|-------------------------|------------------------|-----------------------|
| Measured Depth (ft) | Inclination (°) | Azimuth (°) | Vertical Depth (ft) | +N/-S (ft) | +E/-W (ft) | Vertical Section (ft) | Dogleg Rate (°/100usft) | Build Rate (°/100usft) | Turn Rate (°/100usft) |
| 12,357.8 | 88.14 | 273.28 | 7,172.7 | -320.6 | -3,883.5 | 3,892.4 | 0.61 | -0.61 | -0.07 |
| 12,372.7 | 88.04 | 273.27 | 7,173.2 | -319.7 | -3,898.3 | 3,907.2 | 0.68 | -0.67 | -0.07 |
| 12,387.5 | 87.93 | 273.25 | 7,173.7 | -318.9 | -3,913.1 | 3,922.0 | 0.75 | -0.74 | -0.13 |
| 12,402.3 | 87.81 | 273.23 | 7,174.3 | -318.0 | -3,927.9 | 3,936.7 | 0.82 | -0.81 | -0.13 |
| 12,417.2 | 87.69 | 273.20 | 7,174.9 | -317.2 | -3,942.7 | 3,951.5 | 0.83 | -0.81 | -0.20 |
| 12,432.0 | 87.58 | 273.17 | 7,175.5 | -316.4 | -3,957.5 | 3,966.2 | 0.77 | -0.74 | -0.20 |
| 12,446.8 | 87.48 | 273.14 | 7,176.1 | -315.6 | -3,972.3 | 3,981.0 | 0.70 | -0.67 | -0.20 |
| 12,461.7 | 87.40 | 273.10 | 7,176.8 | -314.7 | -3,987.1 | 3,995.8 | 0.60 | -0.54 | -0.27 |
| 12,476.5 | 87.33 | 273.05 | 7,177.5 | -314.0 | -4,001.9 | 4,010.5 | 0.58 | -0.47 | -0.34 |
| 12,491.3 | 87.29 | 272.99 | 7,178.2 | -313.2 | -4,016.7 | 4,025.3 | 0.49 | -0.27 | -0.40 |
| 12,506.2 | 87.39 | 272.96 | 7,178.8 | -312.4 | -4,031.5 | 4,040.0 | 0.70 | 0.67 | -0.20 |
| 12,521.0 | 88.58 | 273.25 | 7,179.4 | -311.6 | -4,046.3 | 4,054.8 | 8.26 | 8.02 | 1.96 |
| 12,535.8 | 88.71 | 273.16 | 7,179.7 | -310.8 | -4,061.1 | 4,069.6 | 1.07 | 0.88 | -0.61 |
| 12,550.7 | 88.90 | 273.07 | 7,180.0 | -310.0 | -4,075.9 | 4,084.3 | 1.42 | 1.28 | -0.61 |
| 12,565.5 | 89.10 | 272.97 | 7,180.3 | -309.2 | -4,090.7 | 4,099.1 | 1.51 | 1.35 | -0.67 |
| 12,580.3 | 89.29 | 272.87 | 7,180.5 | -308.4 | -4,105.5 | 4,113.9 | 1.45 | 1.28 | -0.67 |
| 12,595.2 | 89.46 | 272.78 | 7,180.7 | -307.7 | -4,120.3 | 4,128.7 | 1.30 | 1.15 | -0.61 |
| 12,610.0 | 90.49 | 273.23 | 7,180.7 | -306.9 | -4,135.2 | 4,143.4 | 7.58 | 6.95 | 3.03 |
| 12,625.0 | 90.56 | 273.16 | 7,180.5 | -306.1 | -4,150.1 | 4,158.4 | 0.66 | 0.47 | -0.47 |
| 12,640.0 | 90.59 | 273.09 | 7,180.4 | -305.3 | -4,165.1 | 4,173.3 | 0.51 | 0.20 | -0.47 |
| 12,655.0 | 90.62 | 273.04 | 7,180.2 | -304.5 | -4,180.1 | 4,188.3 | 0.39 | 0.20 | -0.33 |
| 12,670.0 | 90.65 | 272.98 | 7,180.0 | -303.7 | -4,195.1 | 4,203.2 | 0.45 | 0.20 | -0.40 |
| 12,685.0 | 90.71 | 272.94 | 7,179.9 | -302.9 | -4,210.0 | 4,218.1 | 0.48 | 0.40 | -0.27 |
| 12,700.0 | 90.80 | 272.89 | 7,179.7 | -302.1 | -4,225.0 | 4,233.1 | 0.69 | 0.60 | -0.33 |
| 12,715.0 | 90.98 | 272.86 | 7,179.4 | -301.4 | -4,240.0 | 4,248.0 | 1.22 | 1.20 | -0.20 |
| 12,730.0 | 91.18 | 272.83 | 7,179.2 | -300.6 | -4,255.0 | 4,263.0 | 1.35 | 1.33 | -0.20 |
| 12,745.0 | 91.36 | 272.79 | 7,178.8 | -299.9 | -4,270.0 | 4,277.9 | 1.23 | 1.20 | -0.27 |
| 12,760.0 | 91.48 | 272.74 | 7,178.5 | -299.2 | -4,284.9 | 4,292.9 | 0.87 | 0.80 | -0.33 |
| 12,775.0 | 91.46 | 272.67 | 7,178.1 | -298.5 | -4,299.9 | 4,307.8 | 0.49 | -0.13 | -0.47 |
| 12,790.0 | 91.23 | 272.56 | 7,177.7 | -297.8 | -4,314.9 | 4,322.7 | 1.70 | -1.53 | -0.73 |
| 12,805.0 | 90.63 | 272.39 | 7,177.5 | -297.1 | -4,329.9 | 4,337.7 | 4.16 | -4.00 | -1.13 |
| 12,820.0 | 89.84 | 272.18 | 7,177.4 | -296.5 | -4,344.9 | 4,352.7 | 5.45 | -5.27 | -1.40 |
| 12,835.0 | 88.98 | 271.95 | 7,177.6 | -296.0 | -4,359.9 | 4,367.6 | 5.93 | -5.73 | -1.53 |
| 12,850.0 | 88.17 | 271.72 | 7,177.9 | -295.5 | -4,374.8 | 4,382.6 | 5.61 | -5.40 | -1.53 |
| 12,865.0 | 88.29 | 271.56 | 7,178.4 | -295.1 | -4,389.8 | 4,397.5 | 1.33 | 0.80 | -1.07 |
| 12,880.0 | 89.31 | 271.51 | 7,178.7 | -294.7 | -4,404.8 | 4,412.5 | 6.81 | 6.80 | -0.33 |
| 12,894.8 | 89.04 | 271.29 | 7,178.9 | -294.3 | -4,419.7 | 4,427.3 | 2.35 | -1.82 | -1.48 |
| 12,909.7 | 88.87 | 271.06 | 7,179.2 | -294.0 | -4,434.5 | 4,442.1 | 1.93 | -1.15 | -1.55 |
| 12,924.5 | 88.78 | 270.83 | 7,179.5 | -293.8 | -4,449.3 | 4,456.9 | 1.67 | -0.61 | -1.55 |
| 12,939.3 | 88.73 | 270.60 | 7,179.8 | -293.6 | -4,464.1 | 4,471.7 | 1.59 | -0.34 | -1.55 |
| 12,954.2 | 88.71 | 270.37 | 7,180.2 | -293.5 | -4,479.0 | 4,486.6 | 1.56 | -0.13 | -1.55 |
| 12,969.0 | 88.71 | 270.14 | 7,180.5 | -293.4 | -4,493.8 | 4,501.4 | 1.55 | 0.00 | -1.55 |
| 12,984.0 | 88.71 | 269.92 | 7,180.8 | -293.4 | -4,508.8 | 4,516.4 | 1.47 | 0.00 | -1.47 |
| 12,999.0 | 88.71 | 269.71 | 7,181.2 | -293.4 | -4,523.8 | 4,531.4 | 1.40 | 0.00 | -1.40 |

Ensign Energy Services Inc.

Survey Report

| | | | |
|------------------|---|-------------------------------------|---------------------------------------|
| Company: | Bayswater Exploration & Production, LLC | Local Co-ordinate Reference: | Well Groves Farm O-34-33HC |
| Project: | SEC.34-T7N-R65W | TVD Reference: | RKB @ 4867.0ft (Ensign 153 RKB - 23') |
| Site: | Groves Farm 34-L Pad Sec.34-T7N-R65W | MD Reference: | RKB @ 4867.0ft (Ensign 153 RKB - 23') |
| Well: | Groves Farm O-34-33HC | North Reference: | True |
| Wellbore: | Groves Farms O-34-33HC Wellbore #1 | Survey Calculation Method: | Minimum Curvature |
| Design: | Groves Farms O-34-33HC Wellbore #1 | Database: | US_EDM |

| Survey | | | | | | | | | |
|---------------------|-----------------|-------------|---------------------|------------|------------|-----------------------|-------------------------|------------------------|-----------------------|
| Measured Depth (ft) | Inclination (°) | Azimuth (°) | Vertical Depth (ft) | +N/-S (ft) | +E/-W (ft) | Vertical Section (ft) | Dogleg Rate (°/100usft) | Build Rate (°/100usft) | Turn Rate (°/100usft) |
| 13,014.0 | 88.73 | 269.51 | 7,181.5 | -293.6 | -4,538.8 | 4,546.3 | 1.34 | 0.13 | -1.33 |
| 13,029.0 | 88.76 | 269.33 | 7,181.8 | -293.7 | -4,553.8 | 4,561.3 | 1.22 | 0.20 | -1.20 |
| 13,044.0 | 88.81 | 269.17 | 7,182.1 | -293.9 | -4,568.8 | 4,576.3 | 1.12 | 0.33 | -1.07 |
| 13,059.0 | 88.90 | 269.04 | 7,182.4 | -294.1 | -4,583.8 | 4,591.3 | 1.05 | 0.60 | -0.87 |
| 13,073.8 | 89.03 | 268.98 | 7,182.7 | -294.4 | -4,598.6 | 4,606.1 | 0.97 | 0.88 | -0.40 |
| 13,088.7 | 89.19 | 268.95 | 7,182.9 | -294.7 | -4,613.4 | 4,621.0 | 1.10 | 1.08 | -0.20 |
| 13,103.5 | 89.37 | 268.95 | 7,183.1 | -294.9 | -4,628.3 | 4,635.8 | 1.21 | 1.21 | 0.00 |
| 13,118.3 | 89.57 | 268.98 | 7,183.3 | -295.2 | -4,643.1 | 4,650.6 | 1.36 | 1.35 | 0.20 |
| 13,133.2 | 89.78 | 269.03 | 7,183.4 | -295.5 | -4,657.9 | 4,665.5 | 1.45 | 1.42 | 0.34 |
| 13,148.0 | 90.00 | 269.10 | 7,183.4 | -295.7 | -4,672.8 | 4,680.3 | 1.56 | 1.48 | 0.47 |
| 13,162.8 | 90.25 | 269.21 | 7,183.4 | -295.9 | -4,687.6 | 4,695.1 | 1.84 | 1.69 | 0.74 |
| 13,177.7 | 90.49 | 269.33 | 7,183.3 | -296.1 | -4,702.4 | 4,710.0 | 1.81 | 1.62 | 0.81 |
| 13,192.5 | 90.74 | 269.46 | 7,183.1 | -296.3 | -4,717.2 | 4,724.8 | 1.90 | 1.69 | 0.88 |
| 13,207.3 | 90.98 | 269.57 | 7,182.9 | -296.4 | -4,732.1 | 4,739.6 | 1.78 | 1.62 | 0.74 |
| 13,222.2 | 91.20 | 269.64 | 7,182.6 | -296.5 | -4,746.9 | 4,754.4 | 1.56 | 1.48 | 0.47 |
| 13,237.0 | 90.81 | 270.05 | 7,182.3 | -296.5 | -4,761.7 | 4,769.3 | 3.82 | -2.63 | 2.76 |
| 13,252.0 | 90.88 | 270.06 | 7,182.1 | -296.5 | -4,776.7 | 4,784.2 | 0.47 | 0.47 | 0.07 |
| 13,267.0 | 91.04 | 269.95 | 7,181.9 | -296.5 | -4,791.7 | 4,799.2 | 1.29 | 1.07 | -0.73 |
| 13,282.0 | 91.17 | 269.82 | 7,181.6 | -296.5 | -4,806.7 | 4,814.2 | 1.23 | 0.87 | -0.87 |
| 13,297.0 | 91.28 | 269.68 | 7,181.2 | -296.6 | -4,821.7 | 4,829.2 | 1.19 | 0.73 | -0.93 |
| 13,312.0 | 91.34 | 269.55 | 7,180.9 | -296.7 | -4,836.7 | 4,844.2 | 0.95 | 0.40 | -0.87 |
| 13,327.0 | 90.37 | 269.88 | 7,180.7 | -296.8 | -4,851.7 | 4,859.2 | 6.83 | -6.47 | 2.20 |
| 13,341.8 | 90.03 | 269.90 | 7,180.6 | -296.8 | -4,866.6 | 4,874.0 | 2.30 | -2.29 | 0.13 |
| 13,356.7 | 89.89 | 269.80 | 7,180.6 | -296.9 | -4,881.4 | 4,888.8 | 1.16 | -0.94 | -0.67 |
| 13,371.5 | 89.72 | 269.71 | 7,180.7 | -296.9 | -4,896.2 | 4,903.7 | 1.30 | -1.15 | -0.61 |
| 13,386.3 | 89.56 | 269.63 | 7,180.8 | -297.0 | -4,911.1 | 4,918.5 | 1.21 | -1.08 | -0.54 |
| 13,401.2 | 89.14 | 269.63 | 7,181.0 | -297.1 | -4,925.9 | 4,933.3 | 2.83 | -2.83 | 0.00 |
| 13,416.0 | 87.86 | 270.04 | 7,181.3 | -297.1 | -4,940.7 | 4,948.1 | 9.06 | -8.63 | 2.76 |
| 13,431.0 | 87.89 | 270.29 | 7,181.9 | -297.1 | -4,955.7 | 4,963.1 | 1.68 | 0.20 | 1.67 |
| 13,446.0 | 87.86 | 270.29 | 7,182.5 | -297.0 | -4,970.7 | 4,978.1 | 0.20 | -0.20 | 0.00 |
| 13,461.0 | 87.84 | 270.30 | 7,183.0 | -296.9 | -4,985.7 | 4,993.1 | 0.15 | -0.13 | 0.07 |
| 13,476.0 | 87.83 | 270.31 | 7,183.6 | -296.9 | -5,000.7 | 5,008.1 | 0.09 | -0.07 | 0.07 |
| 13,491.0 | 87.85 | 270.32 | 7,184.1 | -296.8 | -5,015.7 | 5,023.0 | 0.15 | 0.13 | 0.07 |
| 13,506.0 | 87.88 | 270.33 | 7,184.7 | -296.7 | -5,030.6 | 5,038.0 | 0.21 | 0.20 | 0.07 |
| 13,520.8 | 87.95 | 270.32 | 7,185.2 | -296.6 | -5,045.5 | 5,052.8 | 0.48 | 0.47 | -0.07 |
| 13,535.7 | 88.03 | 270.31 | 7,185.8 | -296.5 | -5,060.3 | 5,067.6 | 0.54 | 0.54 | -0.07 |
| 13,550.5 | 88.13 | 270.30 | 7,186.3 | -296.5 | -5,075.1 | 5,082.4 | 0.68 | 0.67 | -0.07 |
| 13,565.3 | 88.23 | 270.28 | 7,186.7 | -296.4 | -5,089.9 | 5,097.3 | 0.69 | 0.67 | -0.13 |
| 13,580.2 | 88.34 | 270.26 | 7,187.2 | -296.3 | -5,104.8 | 5,112.1 | 0.75 | 0.74 | -0.13 |
| 13,595.0 | 88.45 | 270.24 | 7,187.6 | -296.2 | -5,119.6 | 5,126.9 | 0.75 | 0.74 | -0.13 |
| 13,609.8 | 88.56 | 270.23 | 7,188.0 | -296.2 | -5,134.4 | 5,141.7 | 0.74 | 0.74 | -0.07 |
| 13,624.7 | 88.67 | 270.22 | 7,188.3 | -296.1 | -5,149.3 | 5,156.5 | 0.74 | 0.74 | -0.07 |
| 13,639.5 | 88.77 | 270.20 | 7,188.7 | -296.1 | -5,164.1 | 5,171.3 | 0.69 | 0.67 | -0.13 |

Ensign Energy Services Inc.

Survey Report

| | | | |
|------------------|---|-------------------------------------|---------------------------------------|
| Company: | Bayswater Exploration & Production, LLC | Local Co-ordinate Reference: | Well Groves Farm O-34-33HC |
| Project: | SEC.34-T7N-R65W | TVD Reference: | RKB @ 4867.0ft (Ensign 153 RKB - 23') |
| Site: | Groves Farm 34-L Pad Sec.34-T7N-R65W | MD Reference: | RKB @ 4867.0ft (Ensign 153 RKB - 23') |
| Well: | Groves Farm O-34-33HC | North Reference: | True |
| Wellbore: | Groves Farms O-34-33HC Wellbore #1 | Survey Calculation Method: | Minimum Curvature |
| Design: | Groves Farms O-34-33HC Wellbore #1 | Database: | US_EDM |

| Survey | | | | | | | | | |
|---------------------|-----------------|-------------|---------------------|------------|------------|-----------------------|-------------------------|------------------------|-----------------------|
| Measured Depth (ft) | Inclination (°) | Azimuth (°) | Vertical Depth (ft) | +N/-S (ft) | +E/-W (ft) | Vertical Section (ft) | Dogleg Rate (°/100usft) | Build Rate (°/100usft) | Turn Rate (°/100usft) |
| 13,654.3 | 88.87 | 270.19 | 7,189.0 | -296.0 | -5,178.9 | 5,186.2 | 0.68 | 0.67 | -0.07 |
| 13,669.2 | 88.98 | 270.17 | 7,189.3 | -296.0 | -5,193.8 | 5,201.0 | 0.75 | 0.74 | -0.13 |
| 13,684.0 | 89.08 | 270.15 | 7,189.5 | -295.9 | -5,208.6 | 5,215.8 | 0.69 | 0.67 | -0.13 |
| 13,699.0 | 89.18 | 270.13 | 7,189.7 | -295.9 | -5,223.6 | 5,230.8 | 0.68 | 0.67 | -0.13 |
| 13,714.0 | 89.27 | 270.10 | 7,189.9 | -295.9 | -5,238.6 | 5,245.8 | 0.63 | 0.60 | -0.20 |
| 13,729.0 | 89.37 | 270.07 | 7,190.1 | -295.8 | -5,253.6 | 5,260.8 | 0.70 | 0.67 | -0.20 |
| 13,744.0 | 89.47 | 270.05 | 7,190.3 | -295.8 | -5,268.6 | 5,275.8 | 0.68 | 0.67 | -0.13 |
| 13,759.0 | 89.58 | 270.04 | 7,190.4 | -295.8 | -5,283.6 | 5,290.7 | 0.74 | 0.73 | -0.07 |
| 13,774.0 | 89.69 | 270.05 | 7,190.5 | -295.8 | -5,298.6 | 5,305.7 | 0.74 | 0.73 | 0.07 |
| 13,788.8 | 89.80 | 270.08 | 7,190.6 | -295.8 | -5,313.4 | 5,320.6 | 0.77 | 0.74 | 0.20 |
| 13,803.7 | 89.93 | 270.13 | 7,190.6 | -295.8 | -5,328.2 | 5,335.4 | 0.94 | 0.88 | 0.34 |
| 13,818.5 | 90.05 | 270.18 | 7,190.6 | -295.7 | -5,343.1 | 5,350.2 | 0.88 | 0.81 | 0.34 |
| 13,833.3 | 90.18 | 270.23 | 7,190.6 | -295.7 | -5,357.9 | 5,365.0 | 0.94 | 0.88 | 0.34 |
| 13,848.2 | 90.30 | 270.27 | 7,190.5 | -295.6 | -5,372.7 | 5,379.8 | 0.85 | 0.81 | 0.27 |
| 13,863.0 | 90.43 | 270.30 | 7,190.4 | -295.5 | -5,387.6 | 5,394.7 | 0.90 | 0.88 | 0.20 |
| 13,878.0 | 90.54 | 270.29 | 7,190.3 | -295.4 | -5,402.6 | 5,409.7 | 0.74 | 0.73 | -0.07 |
| 13,893.0 | 90.66 | 270.26 | 7,190.1 | -295.4 | -5,417.6 | 5,424.6 | 0.82 | 0.80 | -0.20 |
| 13,908.0 | 90.77 | 270.22 | 7,189.9 | -295.3 | -5,432.6 | 5,439.6 | 0.78 | 0.73 | -0.27 |
| 13,923.0 | 90.88 | 270.18 | 7,189.7 | -295.3 | -5,447.6 | 5,454.6 | 0.78 | 0.73 | -0.27 |
| 13,938.0 | 91.01 | 270.13 | 7,189.5 | -295.2 | -5,462.6 | 5,469.6 | 0.93 | 0.87 | -0.33 |
| 13,953.0 | 91.14 | 270.09 | 7,189.2 | -295.2 | -5,477.6 | 5,484.6 | 0.91 | 0.87 | -0.27 |
| 13,968.0 | 91.29 | 270.06 | 7,188.9 | -295.2 | -5,492.6 | 5,499.6 | 1.02 | 1.00 | -0.20 |
| 13,983.0 | 91.45 | 270.04 | 7,188.5 | -295.2 | -5,507.6 | 5,514.6 | 1.07 | 1.07 | -0.13 |
| 13,998.0 | 91.61 | 270.01 | 7,188.1 | -295.2 | -5,522.6 | 5,529.5 | 1.09 | 1.07 | -0.20 |
| 14,013.0 | 91.74 | 269.98 | 7,187.7 | -295.2 | -5,537.5 | 5,544.5 | 0.89 | 0.87 | -0.20 |
| 14,028.0 | 91.85 | 269.94 | 7,187.2 | -295.2 | -5,552.5 | 5,559.5 | 0.78 | 0.73 | -0.27 |
| 14,043.0 | 91.91 | 269.89 | 7,186.7 | -295.2 | -5,567.5 | 5,574.5 | 0.52 | 0.40 | -0.33 |
| 14,057.8 | 91.89 | 269.80 | 7,186.2 | -295.2 | -5,582.4 | 5,589.3 | 0.62 | -0.13 | -0.61 |
| 14,072.7 | 91.82 | 269.70 | 7,185.7 | -295.3 | -5,597.2 | 5,604.1 | 0.82 | -0.47 | -0.67 |
| 14,087.5 | 91.74 | 269.59 | 7,185.3 | -295.4 | -5,612.0 | 5,619.0 | 0.92 | -0.54 | -0.74 |
| 14,102.3 | 91.68 | 269.48 | 7,184.8 | -295.5 | -5,626.8 | 5,633.8 | 0.84 | -0.40 | -0.74 |
| 14,117.2 | 91.37 | 269.55 | 7,184.4 | -295.6 | -5,641.7 | 5,648.6 | 2.14 | -2.09 | 0.47 |
| 14,132.0 | 89.88 | 270.10 | 7,184.3 | -295.7 | -5,656.5 | 5,663.4 | 10.71 | -10.05 | 3.71 |
| 14,147.0 | 89.50 | 269.97 | 7,184.4 | -295.7 | -5,671.5 | 5,678.4 | 2.68 | -2.53 | -0.87 |
| 14,162.0 | 89.69 | 269.91 | 7,184.5 | -295.7 | -5,686.5 | 5,693.4 | 1.33 | 1.27 | -0.40 |
| 14,177.0 | 89.89 | 269.86 | 7,184.5 | -295.7 | -5,701.5 | 5,708.4 | 1.37 | 1.33 | -0.33 |
| 14,192.0 | 90.09 | 269.80 | 7,184.5 | -295.8 | -5,716.5 | 5,723.4 | 1.39 | 1.33 | -0.40 |
| 14,207.0 | 90.26 | 269.73 | 7,184.5 | -295.8 | -5,731.5 | 5,738.4 | 1.23 | 1.13 | -0.47 |
| 14,222.0 | 90.36 | 269.64 | 7,184.4 | -295.9 | -5,746.5 | 5,753.4 | 0.90 | 0.67 | -0.60 |
| 14,236.8 | 90.33 | 269.51 | 7,184.3 | -296.0 | -5,761.3 | 5,768.2 | 0.90 | -0.20 | -0.88 |
| 14,251.7 | 90.24 | 269.36 | 7,184.2 | -296.2 | -5,776.2 | 5,783.0 | 1.18 | -0.61 | -1.01 |
| 14,266.5 | 90.13 | 269.21 | 7,184.2 | -296.3 | -5,791.0 | 5,797.9 | 1.25 | -0.74 | -1.01 |
| 14,281.3 | 90.01 | 269.05 | 7,184.2 | -296.6 | -5,805.8 | 5,812.7 | 1.35 | -0.81 | -1.08 |

Ensign Energy Services Inc.

Survey Report

| | | | |
|------------------|---|-------------------------------------|---------------------------------------|
| Company: | Bayswater Exploration & Production, LLC | Local Co-ordinate Reference: | Well Groves Farm O-34-33HC |
| Project: | SEC.34-T7N-R65W | TVD Reference: | RKB @ 4867.0ft (Ensign 153 RKB - 23') |
| Site: | Groves Farm 34-L Pad Sec.34-T7N-R65W | MD Reference: | RKB @ 4867.0ft (Ensign 153 RKB - 23') |
| Well: | Groves Farm O-34-33HC | North Reference: | True |
| Wellbore: | Groves Farms O-34-33HC Wellbore #1 | Survey Calculation Method: | Minimum Curvature |
| Design: | Groves Farms O-34-33HC Wellbore #1 | Database: | US_EDM |

| Survey | | | | | | | | | | |
|---------------------|-----------------|-------------|---------------------|------------|------------|-----------------------|-------------------------|------------------------|-----------------------|--|
| Measured Depth (ft) | Inclination (°) | Azimuth (°) | Vertical Depth (ft) | +N/-S (ft) | +E/-W (ft) | Vertical Section (ft) | Dogleg Rate (°/100usft) | Build Rate (°/100usft) | Turn Rate (°/100usft) | |
| 14,296.2 | 89.92 | 268.91 | 7,184.2 | -296.8 | -5,820.7 | 5,827.5 | 1.12 | -0.61 | -0.94 | |
| 14,311.0 | 89.91 | 268.79 | 7,184.2 | -297.1 | -5,835.5 | 5,842.3 | 0.81 | -0.07 | -0.81 | |
| 14,326.0 | 90.02 | 268.71 | 7,184.2 | -297.5 | -5,850.5 | 5,857.3 | 0.91 | 0.73 | -0.53 | |
| 14,341.0 | 90.20 | 268.66 | 7,184.2 | -297.8 | -5,865.5 | 5,872.3 | 1.25 | 1.20 | -0.33 | |
| 14,356.0 | 90.41 | 268.62 | 7,184.1 | -298.2 | -5,880.5 | 5,887.3 | 1.43 | 1.40 | -0.27 | |
| 14,371.0 | 90.64 | 268.59 | 7,184.0 | -298.5 | -5,895.5 | 5,902.3 | 1.55 | 1.53 | -0.20 | |
| 14,386.0 | 90.84 | 268.55 | 7,183.8 | -298.9 | -5,910.5 | 5,917.3 | 1.36 | 1.33 | -0.27 | |
| 14,401.0 | 90.99 | 268.51 | 7,183.5 | -299.3 | -5,925.4 | 5,932.3 | 1.03 | 1.00 | -0.27 | |
| 14,415.8 | 91.03 | 268.44 | 7,183.3 | -299.7 | -5,940.3 | 5,947.2 | 0.54 | 0.27 | -0.47 | |
| 14,430.7 | 91.03 | 268.35 | 7,183.0 | -300.1 | -5,955.1 | 5,962.0 | 0.61 | 0.00 | -0.61 | |
| 14,445.5 | 90.99 | 268.26 | 7,182.7 | -300.5 | -5,969.9 | 5,976.8 | 0.66 | -0.27 | -0.61 | |
| 14,460.3 | 90.94 | 268.17 | 7,182.5 | -301.0 | -5,984.7 | 5,991.7 | 0.69 | -0.34 | -0.61 | |
| 14,475.2 | 90.78 | 268.10 | 7,182.3 | -301.5 | -5,999.6 | 6,006.5 | 1.18 | -1.08 | -0.47 | |
| 14,490.0 | 89.17 | 268.51 | 7,182.3 | -301.9 | -6,014.4 | 6,021.3 | 11.20 | -10.86 | 2.76 | |
| 14,504.8 | 89.15 | 268.54 | 7,182.5 | -302.3 | -6,029.2 | 6,036.2 | 0.24 | -0.13 | 0.20 | |
| 14,519.7 | 89.15 | 268.44 | 7,182.7 | -302.7 | -6,044.1 | 6,051.0 | 0.67 | 0.00 | -0.67 | |
| 14,534.5 | 89.15 | 268.34 | 7,182.9 | -303.1 | -6,058.9 | 6,065.8 | 0.67 | 0.00 | -0.67 | |
| 14,549.3 | 89.15 | 268.24 | 7,183.2 | -303.5 | -6,073.7 | 6,080.6 | 0.67 | 0.00 | -0.67 | |
| 14,564.2 | 89.16 | 268.16 | 7,183.4 | -304.0 | -6,088.5 | 6,095.5 | 0.54 | 0.07 | -0.54 | |
| 14,579.0 | 89.17 | 268.09 | 7,183.6 | -304.5 | -6,103.4 | 6,110.3 | 0.48 | 0.07 | -0.47 | |
| 14,594.0 | 89.18 | 268.04 | 7,183.8 | -305.0 | -6,118.3 | 6,125.3 | 0.34 | 0.07 | -0.33 | |
| 14,609.0 | 89.20 | 268.01 | 7,184.0 | -305.5 | -6,133.3 | 6,140.3 | 0.24 | 0.13 | -0.20 | |
| 14,624.0 | 89.21 | 267.98 | 7,184.2 | -306.0 | -6,148.3 | 6,155.3 | 0.21 | 0.07 | -0.20 | |
| 14,639.0 | 89.23 | 267.94 | 7,184.4 | -306.6 | -6,163.3 | 6,170.3 | 0.30 | 0.13 | -0.27 | |
| 14,654.0 | 89.23 | 267.87 | 7,184.6 | -307.1 | -6,178.3 | 6,185.3 | 0.47 | 0.00 | -0.47 | |
| 14,669.0 | 89.23 | 267.77 | 7,184.8 | -307.7 | -6,193.3 | 6,200.3 | 0.67 | 0.00 | -0.67 | |
| 14,683.8 | 89.20 | 267.58 | 7,185.0 | -308.3 | -6,208.1 | 6,215.1 | 1.30 | -0.20 | -1.28 | |
| 14,698.7 | 89.17 | 267.37 | 7,185.2 | -309.0 | -6,222.9 | 6,230.0 | 1.43 | -0.20 | -1.42 | |
| 14,713.5 | 89.13 | 267.15 | 7,185.5 | -309.7 | -6,237.7 | 6,244.8 | 1.51 | -0.27 | -1.48 | |
| 14,728.3 | 89.08 | 266.98 | 7,185.7 | -310.4 | -6,252.5 | 6,259.6 | 1.19 | -0.34 | -1.15 | |
| 14,743.2 | 89.03 | 266.96 | 7,185.9 | -311.2 | -6,267.4 | 6,274.5 | 0.36 | -0.34 | -0.13 | |
| 14,758.0 | 89.01 | 268.02 | 7,186.2 | -311.9 | -6,282.2 | 6,289.3 | 7.15 | -0.13 | 7.15 | |
| 14,772.8 | 88.94 | 268.19 | 7,186.5 | -312.3 | -6,297.0 | 6,304.1 | 1.24 | -0.47 | 1.15 | |
| 14,787.7 | 88.86 | 268.43 | 7,186.7 | -312.8 | -6,311.8 | 6,319.0 | 1.70 | -0.54 | 1.62 | |
| 14,802.5 | 88.78 | 268.71 | 7,187.0 | -313.2 | -6,326.6 | 6,333.8 | 1.96 | -0.54 | 1.89 | |
| 14,817.3 | 88.73 | 269.00 | 7,187.4 | -313.4 | -6,341.5 | 6,348.6 | 1.98 | -0.34 | 1.96 | |
| 14,832.2 | 88.70 | 269.32 | 7,187.7 | -313.7 | -6,356.3 | 6,363.4 | 2.17 | -0.20 | 2.16 | |
| 14,847.0 | 88.71 | 270.38 | 7,188.0 | -313.7 | -6,371.1 | 6,378.3 | 7.15 | 0.07 | 7.15 | |
| 14,861.8 | 88.70 | 270.77 | 7,188.4 | -313.6 | -6,386.0 | 6,393.1 | 2.63 | -0.07 | 2.63 | |
| 14,876.7 | 88.84 | 270.93 | 7,188.7 | -313.3 | -6,400.8 | 6,407.9 | 1.43 | 0.94 | 1.08 | |
| 14,891.5 | 89.01 | 271.08 | 7,189.0 | -313.1 | -6,415.6 | 6,422.7 | 1.53 | 1.15 | 1.01 | |
| 14,906.3 | 89.19 | 271.20 | 7,189.2 | -312.8 | -6,430.4 | 6,437.5 | 1.46 | 1.21 | 0.81 | |
| 14,921.2 | 89.38 | 271.39 | 7,189.4 | -312.4 | -6,445.3 | 6,452.3 | 1.81 | 1.28 | 1.28 | |
| 14,936.0 | 89.54 | 271.74 | 7,189.5 | -312.0 | -6,460.1 | 6,467.1 | 2.59 | 1.08 | 2.36 | |

Ensign Energy Services Inc.

Survey Report

| | | | |
|------------------|---|-------------------------------------|---------------------------------------|
| Company: | Bayswater Exploration & Production, LLC | Local Co-ordinate Reference: | Well Groves Farm O-34-33HC |
| Project: | SEC.34-T7N-R65W | TVD Reference: | RKB @ 4867.0ft (Ensign 153 RKB - 23') |
| Site: | Groves Farm 34-L Pad Sec.34-T7N-R65W | MD Reference: | RKB @ 4867.0ft (Ensign 153 RKB - 23') |
| Well: | Groves Farm O-34-33HC | North Reference: | True |
| Wellbore: | Groves Farms O-34-33HC Wellbore #1 | Survey Calculation Method: | Minimum Curvature |
| Design: | Groves Farms O-34-33HC Wellbore #1 | Database: | US_EDM |

Survey

| Measured Depth (ft) | Inclination (°) | Azimuth (°) | Vertical Depth (ft) | +N/-S (ft) | +E/-W (ft) | Vertical Section (ft) | Dogleg Rate (°/100usft) | Build Rate (°/100usft) | Turn Rate (°/100usft) |
|---------------------|-----------------|-------------|---------------------|------------|------------|-----------------------|-------------------------|------------------------|-----------------------|
| 14,951.0 | 89.66 | 271.74 | 7,189.6 | -311.6 | -6,475.1 | 6,482.1 | 0.80 | 0.80 | 0.00 |
| 14,966.0 | 89.76 | 271.71 | 7,189.7 | -311.1 | -6,490.1 | 6,497.0 | 0.70 | 0.67 | -0.20 |
| 14,981.0 | 89.85 | 271.65 | 7,189.8 | -310.7 | -6,505.1 | 6,512.0 | 0.72 | 0.60 | -0.40 |
| 14,996.0 | 89.93 | 271.59 | 7,189.8 | -310.3 | -6,520.1 | 6,527.0 | 0.67 | 0.53 | -0.40 |
| 15,011.0 | 90.02 | 271.51 | 7,189.8 | -309.9 | -6,535.1 | 6,541.9 | 0.80 | 0.60 | -0.53 |
| 15,026.0 | 90.10 | 271.44 | 7,189.8 | -309.5 | -6,550.1 | 6,556.9 | 0.71 | 0.53 | -0.47 |
| 15,040.8 | 90.19 | 271.38 | 7,189.7 | -309.1 | -6,564.9 | 6,571.7 | 0.73 | 0.61 | -0.40 |
| 15,055.7 | 90.29 | 271.32 | 7,189.7 | -308.8 | -6,579.7 | 6,586.5 | 0.79 | 0.67 | -0.40 |
| 15,070.5 | 90.38 | 271.25 | 7,189.6 | -308.4 | -6,594.6 | 6,601.3 | 0.77 | 0.61 | -0.47 |
| 15,085.3 | 90.47 | 271.18 | 7,189.5 | -308.1 | -6,609.4 | 6,616.1 | 0.77 | 0.61 | -0.47 |
| 15,100.2 | 90.54 | 271.10 | 7,189.4 | -307.8 | -6,624.2 | 6,631.0 | 0.72 | 0.47 | -0.54 |
| 15,115.0 | 90.59 | 271.01 | 7,189.2 | -307.5 | -6,639.0 | 6,645.8 | 0.69 | 0.34 | -0.61 |
| 15,130.0 | 90.61 | 270.88 | 7,189.0 | -307.3 | -6,654.0 | 6,660.8 | 0.88 | 0.13 | -0.87 |
| 15,145.0 | 90.60 | 270.75 | 7,188.9 | -307.1 | -6,669.0 | 6,675.7 | 0.87 | -0.07 | -0.87 |
| 15,160.0 | 90.57 | 270.60 | 7,188.7 | -306.9 | -6,684.0 | 6,690.7 | 1.02 | -0.20 | -1.00 |
| 15,175.0 | 90.54 | 270.44 | 7,188.6 | -306.8 | -6,699.0 | 6,705.7 | 1.09 | -0.20 | -1.07 |
| 15,190.0 | 90.49 | 270.28 | 7,188.5 | -306.7 | -6,714.0 | 6,720.7 | 1.12 | -0.33 | -1.07 |
| 15,205.0 | 90.44 | 270.13 | 7,188.3 | -306.6 | -6,729.0 | 6,735.7 | 1.05 | -0.33 | -1.00 |
| 15,219.8 | 90.37 | 269.98 | 7,188.2 | -306.6 | -6,743.9 | 6,750.5 | 1.12 | -0.47 | -1.01 |
| 15,234.7 | 90.29 | 269.84 | 7,188.1 | -306.6 | -6,758.7 | 6,765.3 | 1.09 | -0.54 | -0.94 |
| 15,249.5 | 90.21 | 269.70 | 7,188.1 | -306.7 | -6,773.5 | 6,780.1 | 1.09 | -0.54 | -0.94 |
| 15,264.3 | 90.13 | 269.56 | 7,188.0 | -306.8 | -6,788.4 | 6,795.0 | 1.09 | -0.54 | -0.94 |
| 15,279.2 | 90.06 | 269.41 | 7,188.0 | -306.9 | -6,803.2 | 6,809.8 | 1.12 | -0.47 | -1.01 |
| 15,294.0 | 89.99 | 269.26 | 7,188.0 | -307.1 | -6,818.0 | 6,824.6 | 1.12 | -0.47 | -1.01 |
| 15,309.0 | 89.93 | 269.11 | 7,188.0 | -307.3 | -6,833.0 | 6,839.6 | 1.08 | -0.40 | -1.00 |
| 15,324.0 | 89.89 | 268.94 | 7,188.0 | -307.6 | -6,848.0 | 6,854.6 | 1.16 | -0.27 | -1.13 |
| 15,339.0 | 89.85 | 268.78 | 7,188.1 | -307.9 | -6,863.0 | 6,869.6 | 1.10 | -0.27 | -1.07 |
| 15,354.0 | 89.81 | 268.62 | 7,188.1 | -308.2 | -6,878.0 | 6,884.6 | 1.10 | -0.27 | -1.07 |
| 15,369.0 | 89.78 | 268.47 | 7,188.2 | -308.6 | -6,893.0 | 6,899.6 | 1.02 | -0.20 | -1.00 |
| 15,384.0 | 89.75 | 268.34 | 7,188.2 | -309.0 | -6,908.0 | 6,914.6 | 0.89 | -0.20 | -0.87 |
| 15,398.8 | 89.73 | 268.23 | 7,188.3 | -309.4 | -6,922.8 | 6,929.5 | 0.75 | -0.13 | -0.74 |
| 15,413.7 | 89.72 | 268.13 | 7,188.4 | -309.9 | -6,937.7 | 6,944.3 | 0.68 | -0.07 | -0.67 |
| 15,428.5 | 89.71 | 268.04 | 7,188.4 | -310.4 | -6,952.5 | 6,959.1 | 0.61 | -0.07 | -0.61 |
| 15,443.3 | 89.72 | 267.97 | 7,188.5 | -310.9 | -6,967.3 | 6,974.0 | 0.48 | 0.07 | -0.47 |
| 15,458.2 | 89.62 | 268.61 | 7,188.6 | -311.4 | -6,982.1 | 6,988.8 | 4.36 | -0.67 | 4.31 |
| 15,473.0 | 89.43 | 269.73 | 7,188.7 | -311.6 | -6,997.0 | 7,003.6 | 7.66 | -1.28 | 7.55 |
| 15,487.8 | 89.55 | 269.69 | 7,188.9 | -311.7 | -7,011.8 | 7,018.4 | 0.85 | 0.81 | -0.27 |
| 15,502.7 | 89.68 | 269.66 | 7,189.0 | -311.7 | -7,026.6 | 7,033.3 | 0.90 | 0.88 | -0.20 |
| 15,517.5 | 89.83 | 269.64 | 7,189.0 | -311.8 | -7,041.5 | 7,048.1 | 1.02 | 1.01 | -0.13 |
| 15,532.3 | 89.98 | 269.60 | 7,189.0 | -311.9 | -7,056.3 | 7,062.9 | 1.05 | 1.01 | -0.27 |
| 15,547.2 | 90.11 | 269.55 | 7,189.0 | -312.0 | -7,071.1 | 7,077.8 | 0.94 | 0.88 | -0.34 |
| 15,562.0 | 90.22 | 269.48 | 7,189.0 | -312.2 | -7,086.0 | 7,092.6 | 0.88 | 0.74 | -0.47 |
| 15,576.8 | 90.26 | 269.36 | 7,188.9 | -312.3 | -7,100.8 | 7,107.4 | 0.85 | 0.27 | -0.81 |

Ensign Energy Services Inc.

Survey Report

| | | | |
|------------------|---|-------------------------------------|---------------------------------------|
| Company: | Bayswater Exploration & Production, LLC | Local Co-ordinate Reference: | Well Groves Farm O-34-33HC |
| Project: | SEC.34-T7N-R65W | TVD Reference: | RKB @ 4867.0ft (Ensign 153 RKB - 23') |
| Site: | Groves Farm 34-L Pad Sec.34-T7N-R65W | MD Reference: | RKB @ 4867.0ft (Ensign 153 RKB - 23') |
| Well: | Groves Farm O-34-33HC | North Reference: | True |
| Wellbore: | Groves Farms O-34-33HC Wellbore #1 | Survey Calculation Method: | Minimum Curvature |
| Design: | Groves Farms O-34-33HC Wellbore #1 | Database: | US_EDM |

| Survey | | | | | | | | | | |
|---------------------|-----------------|-------------|---------------------|------------|------------|-----------------------|-------------------------|------------------------|-----------------------|--|
| Measured Depth (ft) | Inclination (°) | Azimuth (°) | Vertical Depth (ft) | +N/-S (ft) | +E/-W (ft) | Vertical Section (ft) | Dogleg Rate (°/100usft) | Build Rate (°/100usft) | Turn Rate (°/100usft) | |
| 15,591.7 | 90.28 | 269.21 | 7,188.9 | -312.5 | -7,115.6 | 7,122.2 | 1.02 | 0.13 | -1.01 | |
| 15,606.5 | 90.28 | 269.06 | 7,188.8 | -312.7 | -7,130.5 | 7,137.1 | 1.01 | 0.00 | -1.01 | |
| 15,621.3 | 90.28 | 268.91 | 7,188.7 | -313.0 | -7,145.3 | 7,151.9 | 1.01 | 0.00 | -1.01 | |
| 15,636.2 | 90.29 | 268.76 | 7,188.6 | -313.3 | -7,160.1 | 7,166.7 | 1.01 | 0.07 | -1.01 | |
| 15,651.0 | 90.32 | 268.65 | 7,188.6 | -313.6 | -7,174.9 | 7,181.6 | 0.77 | 0.20 | -0.74 | |
| 15,665.8 | 90.40 | 268.57 | 7,188.5 | -314.0 | -7,189.8 | 7,196.4 | 0.76 | 0.54 | -0.54 | |
| 15,680.7 | 90.49 | 268.52 | 7,188.4 | -314.4 | -7,204.6 | 7,211.2 | 0.69 | 0.61 | -0.34 | |
| 15,695.5 | 90.60 | 268.49 | 7,188.2 | -314.8 | -7,219.4 | 7,226.1 | 0.77 | 0.74 | -0.20 | |
| 15,710.3 | 90.73 | 268.48 | 7,188.0 | -315.1 | -7,234.3 | 7,240.9 | 0.88 | 0.88 | -0.07 | |
| 15,725.2 | 90.33 | 268.96 | 7,187.9 | -315.5 | -7,249.1 | 7,255.7 | 4.21 | -2.70 | 3.23 | |
| 15,740.0 | 89.24 | 270.06 | 7,188.0 | -315.6 | -7,263.9 | 7,270.5 | 10.44 | -7.35 | 7.42 | |
| 15,754.8 | 89.39 | 270.10 | 7,188.1 | -315.6 | -7,278.8 | 7,285.4 | 1.05 | 1.01 | 0.27 | |
| 15,769.7 | 89.56 | 270.15 | 7,188.3 | -315.5 | -7,293.6 | 7,300.2 | 1.19 | 1.15 | 0.34 | |
| 15,784.5 | 89.73 | 270.21 | 7,188.4 | -315.5 | -7,308.4 | 7,315.0 | 1.22 | 1.15 | 0.40 | |
| 15,799.3 | 89.90 | 270.26 | 7,188.4 | -315.4 | -7,323.3 | 7,329.8 | 1.19 | 1.15 | 0.34 | |
| 15,814.2 | 90.07 | 270.30 | 7,188.4 | -315.4 | -7,338.1 | 7,344.7 | 1.18 | 1.15 | 0.27 | |
| 15,829.0 | 90.22 | 270.31 | 7,188.4 | -315.3 | -7,352.9 | 7,359.5 | 1.01 | 1.01 | 0.07 | |
| 15,843.8 | 90.34 | 270.27 | 7,188.3 | -315.2 | -7,367.7 | 7,374.3 | 0.85 | 0.81 | -0.27 | |
| 15,858.7 | 90.46 | 270.21 | 7,188.2 | -315.2 | -7,382.6 | 7,389.1 | 0.90 | 0.81 | -0.40 | |
| 15,873.5 | 90.57 | 270.13 | 7,188.1 | -315.1 | -7,397.4 | 7,403.9 | 0.92 | 0.74 | -0.54 | |
| 15,888.3 | 90.68 | 270.07 | 7,187.9 | -315.1 | -7,412.2 | 7,418.8 | 0.84 | 0.74 | -0.40 | |
| 15,903.2 | 90.19 | 270.37 | 7,187.8 | -315.0 | -7,427.1 | 7,433.6 | 3.87 | -3.30 | 2.02 | |
| 15,918.0 | 89.70 | 270.68 | 7,187.8 | -314.9 | -7,441.9 | 7,448.4 | 3.91 | -3.30 | 2.09 | |
| 15,932.8 | 89.90 | 270.76 | 7,187.9 | -314.7 | -7,456.7 | 7,463.2 | 1.45 | 1.35 | 0.54 | |
| 15,947.7 | 90.11 | 270.86 | 7,187.9 | -314.5 | -7,471.6 | 7,478.0 | 1.57 | 1.42 | 0.67 | |
| 15,962.5 | 90.34 | 270.96 | 7,187.8 | -314.3 | -7,486.4 | 7,492.8 | 1.69 | 1.55 | 0.67 | |
| 15,977.3 | 90.56 | 271.03 | 7,187.7 | -314.0 | -7,501.2 | 7,507.7 | 1.56 | 1.48 | 0.47 | |
| 15,992.2 | 90.77 | 271.05 | 7,187.5 | -313.7 | -7,516.1 | 7,522.5 | 1.42 | 1.42 | 0.13 | |
| 16,007.0 | 90.96 | 270.95 | 7,187.3 | -313.5 | -7,530.9 | 7,537.3 | 1.45 | 1.28 | -0.67 | |
| 16,022.0 | 91.10 | 270.67 | 7,187.0 | -313.3 | -7,545.9 | 7,552.3 | 2.09 | 0.93 | -1.87 | |
| 16,037.0 | 91.21 | 270.29 | 7,186.7 | -313.1 | -7,560.9 | 7,567.2 | 2.64 | 0.73 | -2.53 | |
| 16,052.0 | 91.30 | 269.86 | 7,186.4 | -313.1 | -7,575.9 | 7,582.2 | 2.93 | 0.60 | -2.87 | |
| 16,067.0 | 91.37 | 269.44 | 7,186.0 | -313.2 | -7,590.9 | 7,597.2 | 2.84 | 0.47 | -2.80 | |
| 16,082.0 | 90.72 | 269.56 | 7,185.8 | -313.3 | -7,605.9 | 7,612.2 | 4.41 | -4.33 | 0.80 | |
| 16,097.0 | 89.48 | 270.18 | 7,185.7 | -313.4 | -7,620.9 | 7,627.2 | 9.24 | -8.27 | 4.13 | |
| 16,112.0 | 89.44 | 269.87 | 7,185.9 | -313.4 | -7,635.9 | 7,642.2 | 2.08 | -0.27 | -2.07 | |
| 16,127.0 | 89.39 | 269.58 | 7,186.0 | -313.4 | -7,650.9 | 7,657.2 | 1.96 | -0.33 | -1.93 | |
| 16,142.0 | 89.32 | 269.31 | 7,186.2 | -313.6 | -7,665.9 | 7,672.2 | 1.86 | -0.47 | -1.80 | |
| 16,157.0 | 89.26 | 269.07 | 7,186.4 | -313.8 | -7,680.9 | 7,687.2 | 1.65 | -0.40 | -1.60 | |
| 16,172.0 | 89.22 | 268.87 | 7,186.6 | -314.1 | -7,695.9 | 7,702.2 | 1.36 | -0.27 | -1.33 | |
| 16,187.0 | 88.26 | 269.34 | 7,186.9 | -314.3 | -7,710.9 | 7,717.2 | 7.13 | -6.40 | 3.13 | |
| 16,202.0 | 88.31 | 269.25 | 7,187.4 | -314.5 | -7,725.9 | 7,732.2 | 0.69 | 0.33 | -0.60 | |
| 16,217.0 | 88.39 | 269.21 | 7,187.8 | -314.7 | -7,740.9 | 7,747.1 | 0.60 | 0.53 | -0.27 | |

Ensign Energy Services Inc.

Survey Report

| | | | |
|------------------|---|-------------------------------------|---------------------------------------|
| Company: | Bayswater Exploration & Production, LLC | Local Co-ordinate Reference: | Well Groves Farm O-34-33HC |
| Project: | SEC.34-T7N-R65W | TVD Reference: | RKB @ 4867.0ft (Ensign 153 RKB - 23') |
| Site: | Groves Farm 34-L Pad Sec.34-T7N-R65W | MD Reference: | RKB @ 4867.0ft (Ensign 153 RKB - 23') |
| Well: | Groves Farm O-34-33HC | North Reference: | True |
| Wellbore: | Groves Farms O-34-33HC Wellbore #1 | Survey Calculation Method: | Minimum Curvature |
| Design: | Groves Farms O-34-33HC Wellbore #1 | Database: | US_EDM |

Survey

| Measured Depth (ft) | Inclination (°) | Azimuth (°) | Vertical Depth (ft) | +N/-S (ft) | +E/-W (ft) | Vertical Section (ft) | Dogleg Rate (°/100usft) | Build Rate (°/100usft) | Turn Rate (°/100usft) |
|---------------------|-----------------|-------------|---------------------|------------|------------|-----------------------|-------------------------|------------------------|-----------------------|
| 16,232.0 | 88.50 | 269.19 | 7,188.2 | -314.9 | -7,755.8 | 7,762.1 | 0.75 | 0.73 | -0.13 |
| 16,247.0 | 88.63 | 269.18 | 7,188.6 | -315.1 | -7,770.8 | 7,777.1 | 0.87 | 0.87 | -0.07 |
| 16,262.0 | 88.80 | 269.19 | 7,188.9 | -315.3 | -7,785.8 | 7,792.1 | 1.14 | 1.13 | 0.07 |
| 16,277.0 | 89.02 | 269.20 | 7,189.2 | -315.5 | -7,800.8 | 7,807.1 | 1.47 | 1.47 | 0.07 |
| 16,290.0 | 89.28 | 269.21 | 7,189.4 | -315.7 | -7,813.8 | 7,820.1 | 2.00 | 2.00 | 0.08 |
| 16,303.0 | 89.56 | 269.23 | 7,189.5 | -315.9 | -7,826.8 | 7,833.1 | 2.16 | 2.15 | 0.15 |
| 16,316.0 | 89.85 | 269.25 | 7,189.6 | -316.1 | -7,839.8 | 7,846.1 | 2.24 | 2.23 | 0.15 |
| 16,329.0 | 90.12 | 269.28 | 7,189.6 | -316.2 | -7,852.8 | 7,859.1 | 2.09 | 2.08 | 0.23 |
| 16,342.0 | 90.35 | 269.31 | 7,189.5 | -316.4 | -7,865.8 | 7,872.1 | 1.78 | 1.77 | 0.23 |
| 16,355.0 | 90.50 | 269.35 | 7,189.4 | -316.5 | -7,878.8 | 7,885.1 | 1.19 | 1.15 | 0.31 |
| 16,368.0 | 90.52 | 269.41 | 7,189.3 | -316.7 | -7,891.8 | 7,898.1 | 0.49 | 0.15 | 0.46 |
| 16,382.7 | 90.33 | 269.48 | 7,189.2 | -316.8 | -7,906.5 | 7,912.7 | 1.38 | -1.30 | 0.48 |
| 16,397.3 | 90.00 | 269.57 | 7,189.2 | -316.9 | -7,921.1 | 7,927.4 | 2.33 | -2.25 | 0.61 |
| 16,412.0 | 89.60 | 269.66 | 7,189.2 | -317.0 | -7,935.8 | 7,942.1 | 2.79 | -2.73 | 0.61 |
| 16,426.7 | 89.18 | 269.75 | 7,189.4 | -317.1 | -7,950.5 | 7,956.7 | 2.93 | -2.86 | 0.61 |
| 16,441.3 | 88.80 | 269.81 | 7,189.6 | -317.2 | -7,965.1 | 7,971.4 | 2.62 | -2.59 | 0.41 |
| 16,456.0 | 88.50 | 269.86 | 7,190.0 | -317.2 | -7,979.8 | 7,986.0 | 2.07 | -2.04 | 0.34 |
| 16,471.0 | 88.36 | 269.84 | 7,190.4 | -317.3 | -7,994.8 | 8,001.0 | 0.94 | -0.93 | -0.13 |
| 16,486.0 | 88.34 | 269.81 | 7,190.8 | -317.3 | -8,009.8 | 8,016.0 | 0.24 | -0.13 | -0.20 |
| 16,501.0 | 88.39 | 269.75 | 7,191.3 | -317.4 | -8,024.8 | 8,031.0 | 0.52 | 0.33 | -0.40 |
| 16,516.0 | 88.50 | 269.70 | 7,191.7 | -317.4 | -8,039.8 | 8,046.0 | 0.81 | 0.73 | -0.33 |
| 16,531.0 | 88.65 | 269.65 | 7,192.0 | -317.5 | -8,054.8 | 8,061.0 | 1.05 | 1.00 | -0.33 |
| 16,546.0 | 88.85 | 269.63 | 7,192.4 | -317.6 | -8,069.8 | 8,076.0 | 1.34 | 1.33 | -0.13 |
| 16,560.8 | 89.11 | 269.64 | 7,192.6 | -317.7 | -8,084.6 | 8,090.8 | 1.75 | 1.75 | 0.07 |
| 16,575.7 | 89.40 | 269.68 | 7,192.8 | -317.8 | -8,099.4 | 8,105.6 | 1.97 | 1.95 | 0.27 |
| 16,590.5 | 89.69 | 269.75 | 7,192.9 | -317.9 | -8,114.3 | 8,120.4 | 2.01 | 1.96 | 0.47 |
| 16,605.3 | 89.97 | 269.83 | 7,193.0 | -317.9 | -8,129.1 | 8,135.3 | 1.96 | 1.89 | 0.54 |
| 16,620.2 | 90.20 | 269.93 | 7,193.0 | -318.0 | -8,143.9 | 8,150.1 | 1.69 | 1.55 | 0.67 |
| 16,635.0 | 90.36 | 270.07 | 7,192.9 | -318.0 | -8,158.8 | 8,164.9 | 1.43 | 1.08 | 0.94 |
| 16,649.8 | 90.38 | 270.26 | 7,192.8 | -317.9 | -8,173.6 | 8,179.7 | 1.29 | 0.13 | 1.28 |
| 16,664.7 | 90.32 | 270.46 | 7,192.7 | -317.8 | -8,188.4 | 8,194.6 | 1.41 | -0.40 | 1.35 |
| 16,679.5 | 90.21 | 270.66 | 7,192.6 | -317.7 | -8,203.3 | 8,209.4 | 1.54 | -0.74 | 1.35 |
| 16,694.3 | 90.08 | 270.84 | 7,192.6 | -317.5 | -8,218.1 | 8,224.2 | 1.50 | -0.88 | 1.21 |
| 16,709.2 | 89.95 | 270.98 | 7,192.6 | -317.2 | -8,232.9 | 8,239.0 | 1.29 | -0.88 | 0.94 |
| 16,724.0 | 89.82 | 271.03 | 7,192.6 | -317.0 | -8,247.8 | 8,253.8 | 0.94 | -0.88 | 0.34 |
| 16,739.0 | 89.72 | 270.93 | 7,192.7 | -316.7 | -8,262.8 | 8,268.8 | 0.94 | -0.67 | -0.67 |
| 16,754.0 | 89.64 | 270.76 | 7,192.8 | -316.5 | -8,277.8 | 8,283.8 | 1.25 | -0.53 | -1.13 |
| 16,769.0 | 89.59 | 270.55 | 7,192.9 | -316.3 | -8,292.8 | 8,298.8 | 1.44 | -0.33 | -1.40 |
| 16,784.0 | 89.55 | 270.33 | 7,193.0 | -316.2 | -8,307.8 | 8,313.7 | 1.49 | -0.27 | -1.47 |
| 16,799.0 | 88.75 | 270.20 | 7,193.2 | -316.1 | -8,322.8 | 8,328.7 | 5.40 | -5.33 | -0.87 |
| 16,814.0 | 87.87 | 270.11 | 7,193.7 | -316.1 | -8,337.7 | 8,343.7 | 5.90 | -5.87 | -0.60 |
| 16,828.8 | 87.91 | 270.01 | 7,194.2 | -316.1 | -8,352.6 | 8,358.5 | 0.73 | 0.27 | -0.67 |
| 16,843.7 | 87.98 | 269.94 | 7,194.7 | -316.1 | -8,367.4 | 8,373.3 | 0.67 | 0.47 | -0.47 |
| 16,858.5 | 88.07 | 269.89 | 7,195.2 | -316.1 | -8,382.2 | 8,388.2 | 0.69 | 0.61 | -0.34 |

Ensign Energy Services Inc.

Survey Report

| | | | |
|------------------|---|-------------------------------------|---------------------------------------|
| Company: | Bayswater Exploration & Production, LLC | Local Co-ordinate Reference: | Well Groves Farm O-34-33HC |
| Project: | SEC.34-T7N-R65W | TVD Reference: | RKB @ 4867.0ft (Ensign 153 RKB - 23') |
| Site: | Groves Farm 34-L Pad Sec.34-T7N-R65W | MD Reference: | RKB @ 4867.0ft (Ensign 153 RKB - 23') |
| Well: | Groves Farm O-34-33HC | North Reference: | True |
| Wellbore: | Groves Farms O-34-33HC Wellbore #1 | Survey Calculation Method: | Minimum Curvature |
| Design: | Groves Farms O-34-33HC Wellbore #1 | Database: | US_EDM |

| Survey | | | | | | | | | |
|---------------------|-----------------|-------------|---------------------|------------|------------|-----------------------|-------------------------|------------------------|-----------------------|
| Measured Depth (ft) | Inclination (°) | Azimuth (°) | Vertical Depth (ft) | +N/-S (ft) | +E/-W (ft) | Vertical Section (ft) | Dogleg Rate (°/100usft) | Build Rate (°/100usft) | Turn Rate (°/100usft) |
| 16,873.3 | 88.19 | 269.86 | 7,195.7 | -316.2 | -8,397.0 | 8,403.0 | 0.83 | 0.81 | -0.20 |
| 16,888.2 | 88.33 | 269.85 | 7,196.2 | -316.2 | -8,411.9 | 8,417.8 | 0.95 | 0.94 | -0.07 |
| 16,903.0 | 88.51 | 269.86 | 7,196.6 | -316.2 | -8,426.7 | 8,432.6 | 1.22 | 1.21 | 0.07 |
| 16,918.0 | 88.75 | 269.91 | 7,196.9 | -316.3 | -8,441.7 | 8,447.6 | 1.63 | 1.60 | 0.33 |
| 16,933.0 | 89.02 | 269.97 | 7,197.2 | -316.3 | -8,456.7 | 8,462.6 | 1.84 | 1.80 | 0.40 |
| 16,948.0 | 89.32 | 270.04 | 7,197.5 | -316.3 | -8,471.7 | 8,477.6 | 2.05 | 2.00 | 0.47 |
| 16,963.0 | 89.62 | 270.10 | 7,197.6 | -316.3 | -8,486.7 | 8,492.6 | 2.04 | 2.00 | 0.40 |
| 16,978.0 | 89.92 | 270.14 | 7,197.7 | -316.2 | -8,501.7 | 8,507.6 | 2.02 | 2.00 | 0.27 |
| 16,993.0 | 90.21 | 270.15 | 7,197.6 | -316.2 | -8,516.7 | 8,522.5 | 1.93 | 1.93 | 0.07 |
| 17,007.8 | 90.46 | 270.10 | 7,197.5 | -316.2 | -8,531.5 | 8,537.4 | 1.72 | 1.69 | -0.34 |
| 17,022.7 | 90.69 | 270.02 | 7,197.4 | -316.1 | -8,546.4 | 8,552.2 | 1.64 | 1.55 | -0.54 |
| 17,037.5 | 90.91 | 269.93 | 7,197.2 | -316.1 | -8,561.2 | 8,567.0 | 1.60 | 1.48 | -0.61 |
| 17,052.3 | 91.10 | 269.83 | 7,196.9 | -316.2 | -8,576.0 | 8,581.8 | 1.45 | 1.28 | -0.67 |
| 17,067.2 | 90.59 | 269.99 | 7,196.7 | -316.2 | -8,590.9 | 8,596.7 | 3.60 | -3.44 | 1.08 |
| 17,082.0 | 89.17 | 270.49 | 7,196.7 | -316.1 | -8,605.7 | 8,611.5 | 10.15 | -9.58 | 3.37 |
| 17,096.8 | 89.30 | 270.44 | 7,196.9 | -316.0 | -8,620.5 | 8,626.3 | 0.94 | 0.88 | -0.34 |
| 17,111.7 | 89.41 | 270.39 | 7,197.1 | -315.9 | -8,635.3 | 8,641.1 | 0.81 | 0.74 | -0.34 |
| 17,126.5 | 89.50 | 270.34 | 7,197.2 | -315.8 | -8,650.2 | 8,655.9 | 0.69 | 0.61 | -0.34 |
| 17,141.3 | 89.57 | 270.29 | 7,197.4 | -315.7 | -8,665.0 | 8,670.8 | 0.58 | 0.47 | -0.34 |
| 17,156.2 | 89.60 | 270.23 | 7,197.5 | -315.7 | -8,679.8 | 8,685.6 | 0.45 | 0.20 | -0.40 |
| 17,171.0 | 89.58 | 270.15 | 7,197.6 | -315.6 | -8,694.7 | 8,700.4 | 0.56 | -0.13 | -0.54 |
| 17,185.8 | 89.46 | 270.04 | 7,197.7 | -315.6 | -8,709.5 | 8,715.2 | 1.10 | -0.81 | -0.74 |
| 17,200.7 | 89.29 | 269.91 | 7,197.9 | -315.6 | -8,724.3 | 8,730.0 | 1.44 | -1.15 | -0.88 |
| 17,215.5 | 89.09 | 269.78 | 7,198.1 | -315.6 | -8,739.2 | 8,744.9 | 1.61 | -1.35 | -0.88 |
| 17,230.3 | 88.89 | 269.63 | 7,198.3 | -315.7 | -8,754.0 | 8,759.7 | 1.69 | -1.35 | -1.01 |
| 17,245.2 | 88.71 | 269.49 | 7,198.7 | -315.8 | -8,768.8 | 8,774.5 | 1.54 | -1.21 | -0.94 |
| 17,260.0 | 88.58 | 269.34 | 7,199.0 | -316.0 | -8,783.7 | 8,789.3 | 1.34 | -0.88 | -1.01 |
| 17,275.0 | 88.52 | 269.20 | 7,199.4 | -316.2 | -8,798.7 | 8,804.3 | 1.02 | -0.40 | -0.93 |
| 17,290.0 | 88.51 | 269.06 | 7,199.8 | -316.4 | -8,813.6 | 8,819.3 | 0.94 | -0.07 | -0.93 |
| 17,305.0 | 88.54 | 268.93 | 7,200.2 | -316.7 | -8,828.6 | 8,834.3 | 0.89 | 0.20 | -0.87 |
| 17,320.0 | 88.59 | 268.80 | 7,200.5 | -317.0 | -8,843.6 | 8,849.3 | 0.93 | 0.33 | -0.87 |
| 17,335.0 | 88.65 | 268.66 | 7,200.9 | -317.3 | -8,858.6 | 8,864.3 | 1.02 | 0.40 | -0.93 |
| 17,350.0 | 88.72 | 268.53 | 7,201.2 | -317.7 | -8,873.6 | 8,879.3 | 0.98 | 0.47 | -0.87 |
| 17,364.8 | 88.80 | 268.39 | 7,201.6 | -318.1 | -8,888.4 | 8,894.1 | 1.09 | 0.54 | -0.94 |
| 17,379.7 | 88.89 | 268.25 | 7,201.9 | -318.5 | -8,903.3 | 8,909.0 | 1.12 | 0.61 | -0.94 |
| 17,394.5 | 88.97 | 268.13 | 7,202.1 | -319.0 | -8,918.1 | 8,923.8 | 0.97 | 0.54 | -0.81 |
| 17,409.3 | 89.05 | 268.02 | 7,202.4 | -319.5 | -8,932.9 | 8,938.6 | 0.92 | 0.54 | -0.74 |
| 17,424.2 | 89.12 | 267.96 | 7,202.6 | -320.0 | -8,947.7 | 8,953.5 | 0.62 | 0.47 | -0.40 |
| 17,439.0 | 89.17 | 267.94 | 7,202.8 | -320.5 | -8,962.6 | 8,968.3 | 0.36 | 0.34 | -0.13 |
| 17,453.8 | 89.18 | 268.02 | 7,203.1 | -321.0 | -8,977.4 | 8,983.1 | 0.54 | 0.07 | 0.54 |
| 17,468.7 | 89.18 | 268.15 | 7,203.3 | -321.5 | -8,992.2 | 8,998.0 | 0.88 | 0.00 | 0.88 |
| 17,483.5 | 89.17 | 268.30 | 7,203.5 | -322.0 | -9,007.0 | 9,012.8 | 1.01 | -0.07 | 1.01 |
| 17,498.3 | 89.17 | 268.44 | 7,203.7 | -322.4 | -9,021.9 | 9,027.6 | 0.94 | 0.00 | 0.94 |

Ensign Energy Services Inc.

Survey Report

| | | | |
|------------------|---|-------------------------------------|---------------------------------------|
| Company: | Bayswater Exploration & Production, LLC | Local Co-ordinate Reference: | Well Groves Farm O-34-33HC |
| Project: | SEC.34-T7N-R65W | TVD Reference: | RKB @ 4867.0ft (Ensign 153 RKB - 23') |
| Site: | Groves Farm 34-L Pad Sec.34-T7N-R65W | MD Reference: | RKB @ 4867.0ft (Ensign 153 RKB - 23') |
| Well: | Groves Farm O-34-33HC | North Reference: | True |
| Wellbore: | Groves Farms O-34-33HC Wellbore #1 | Survey Calculation Method: | Minimum Curvature |
| Design: | Groves Farms O-34-33HC Wellbore #1 | Database: | US_EDM |

Survey

| Measured Depth (ft) | Inclination (°) | Azimuth (°) | Vertical Depth (ft) | +N/-S (ft) | +E/-W (ft) | Vertical Section (ft) | Dogleg Rate (°/100usft) | Build Rate (°/100usft) | Turn Rate (°/100usft) |
|---------------------|-----------------|-------------|---------------------|------------|------------|-----------------------|-------------------------|------------------------|-----------------------|
| 17,513.2 | 89.17 | 268.57 | 7,203.9 | -322.8 | -9,036.7 | 9,042.4 | 0.88 | 0.00 | 0.88 |
| 17,528.0 | 89.21 | 268.64 | 7,204.1 | -323.2 | -9,051.5 | 9,057.3 | 0.54 | 0.27 | 0.47 |
| 17,543.0 | 89.29 | 268.61 | 7,204.3 | -323.5 | -9,066.5 | 9,072.3 | 0.57 | 0.53 | -0.20 |
| 17,558.0 | 89.39 | 268.53 | 7,204.5 | -323.9 | -9,081.5 | 9,087.3 | 0.85 | 0.67 | -0.53 |
| 17,573.0 | 89.51 | 268.40 | 7,204.6 | -324.3 | -9,096.5 | 9,102.3 | 1.18 | 0.80 | -0.87 |
| 17,588.0 | 89.63 | 268.25 | 7,204.8 | -324.7 | -9,111.5 | 9,117.3 | 1.28 | 0.80 | -1.00 |
| 17,603.0 | 89.73 | 268.08 | 7,204.8 | -325.2 | -9,126.5 | 9,132.3 | 1.31 | 0.67 | -1.13 |
| 17,618.0 | 89.81 | 267.91 | 7,204.9 | -325.7 | -9,141.5 | 9,147.3 | 1.25 | 0.53 | -1.13 |
| 17,632.8 | 89.84 | 267.72 | 7,204.9 | -326.3 | -9,156.3 | 9,162.1 | 1.30 | 0.20 | -1.28 |
| 17,647.7 | 89.85 | 267.54 | 7,205.0 | -326.9 | -9,171.1 | 9,176.9 | 1.21 | 0.07 | -1.21 |
| 17,662.5 | 89.84 | 267.37 | 7,205.0 | -327.6 | -9,185.9 | 9,191.8 | 1.15 | -0.07 | -1.15 |
| 17,677.3 | 89.84 | 267.24 | 7,205.1 | -328.3 | -9,200.7 | 9,206.6 | 0.88 | 0.00 | -0.88 |
| 17,692.2 | 89.85 | 267.17 | 7,205.1 | -329.0 | -9,215.6 | 9,221.4 | 0.48 | 0.07 | -0.47 |
| 17,707.0 | 89.89 | 267.20 | 7,205.1 | -329.7 | -9,230.4 | 9,236.3 | 0.34 | 0.27 | 0.20 |
| 17,721.8 | 89.98 | 267.38 | 7,205.2 | -330.4 | -9,245.2 | 9,251.1 | 1.36 | 0.61 | 1.21 |
| 17,736.7 | 90.10 | 267.64 | 7,205.1 | -331.1 | -9,260.0 | 9,265.9 | 1.93 | 0.81 | 1.75 |
| 17,751.5 | 90.24 | 267.95 | 7,205.1 | -331.6 | -9,274.8 | 9,280.8 | 2.29 | 0.94 | 2.09 |
| 17,766.3 | 90.39 | 268.27 | 7,205.0 | -332.1 | -9,289.7 | 9,295.6 | 2.38 | 1.01 | 2.16 |
| 17,781.2 | 90.54 | 268.56 | 7,204.9 | -332.5 | -9,304.5 | 9,310.4 | 2.20 | 1.01 | 1.95 |
| 17,796.0 | 90.69 | 268.78 | 7,204.7 | -332.9 | -9,319.3 | 9,325.3 | 1.80 | 1.01 | 1.48 |
| 17,809.6 | 90.81 | 268.87 | 7,204.6 | -333.2 | -9,332.9 | 9,338.9 | 1.10 | 0.88 | 0.66 |
| 17,823.2 | 90.93 | 268.89 | 7,204.4 | -333.4 | -9,346.5 | 9,352.5 | 0.89 | 0.88 | 0.15 |
| 17,836.8 | 91.05 | 268.87 | 7,204.1 | -333.7 | -9,360.1 | 9,366.0 | 0.89 | 0.88 | -0.15 |
| 17,850.4 | 91.16 | 268.82 | 7,203.9 | -334.0 | -9,373.7 | 9,379.6 | 0.89 | 0.81 | -0.37 |
| 17,864.0 | 91.26 | 268.75 | 7,203.6 | -334.3 | -9,387.3 | 9,393.2 | 0.90 | 0.74 | -0.51 |
| 17,877.6 | 91.37 | 268.66 | 7,203.3 | -334.6 | -9,400.9 | 9,406.8 | 1.04 | 0.81 | -0.66 |
| 17,891.2 | 91.47 | 268.58 | 7,202.9 | -334.9 | -9,414.5 | 9,420.4 | 0.94 | 0.74 | -0.59 |
| 17,904.8 | 91.56 | 268.49 | 7,202.6 | -335.2 | -9,428.1 | 9,434.0 | 0.94 | 0.66 | -0.66 |
| 17,918.4 | 91.65 | 268.41 | 7,202.2 | -335.6 | -9,441.7 | 9,447.6 | 0.89 | 0.66 | -0.59 |
| 17,932.0 | 91.74 | 268.34 | 7,201.8 | -336.0 | -9,455.2 | 9,461.2 | 0.84 | 0.66 | -0.51 |
| 17,945.6 | 91.81 | 268.29 | 7,201.4 | -336.4 | -9,468.8 | 9,474.8 | 0.63 | 0.51 | -0.37 |
| 17,959.2 | 91.87 | 268.26 | 7,200.9 | -336.8 | -9,482.4 | 9,488.4 | 0.49 | 0.44 | -0.22 |
| 17,972.8 | 91.93 | 268.24 | 7,200.5 | -337.2 | -9,496.0 | 9,502.0 | 0.47 | 0.44 | -0.15 |
| 17,986.4 | 91.98 | 268.22 | 7,200.0 | -337.6 | -9,509.6 | 9,515.6 | 0.40 | 0.37 | -0.15 |
| 18,000.0 | 92.03 | 268.21 | 7,199.5 | -338.1 | -9,523.2 | 9,529.2 | 0.37 | 0.37 | -0.07 |

Ensign Energy Services Inc.

Survey Report

| | | | |
|------------------|---|-------------------------------------|---------------------------------------|
| Company: | Bayswater Exploration & Production, LLC | Local Co-ordinate Reference: | Well Groves Farm O-34-33HC |
| Project: | SEC.34-T7N-R65W | TVD Reference: | RKB @ 4867.0ft (Ensign 153 RKB - 23') |
| Site: | Groves Farm 34-L Pad Sec.34-T7N-R65W | MD Reference: | RKB @ 4867.0ft (Ensign 153 RKB - 23') |
| Well: | Groves Farm O-34-33HC | North Reference: | True |
| Wellbore: | Groves Farms O-34-33HC Wellbore #1 | Survey Calculation Method: | Minimum Curvature |
| Design: | Groves Farms O-34-33HC Wellbore #1 | Database: | US_EDM |

Design Targets

Target Name

| - hit/miss target | Dip Angle (°) | Dip Dir. (°) | TVD (ft) | +N/-S (ft) | +E/-W (ft) | Northing (usft) | Easting (usft) | Latitude | Longitude |
|--|------------------|-----------------|-------------|---------------|---------------|--------------------|-------------------|-----------|-------------|
| - Shape | | | | | | | | | |
| SHL 2606'FSL & 892'I | 0.00 | 0.00 | 1.0 | 0.0 | 0.0 | 1,437,155.92 | 3,238,241.44 | 40.530233 | -104.642927 |
| - survey hits target center | | | | | | | | | |
| - Point | | | | | | | | | |
| Projected BHL 1986'F | 0.00 | 0.00 | 7,199.5 | -338.1 | -9,523.2 | 1,436,725.81 | 3,228,722.26 | 40.529300 | -104.677185 |
| - survey misses target center by 0.1ft at 18000.0ft MD (7199.5 TVD, -338.1 N, -9523.2 E) | | | | | | | | | |
| - Point | | | | | | | | | |

Survey Annotations

| Measured Depth (ft) | Vertical Depth (ft) | Local Coordinates | | Comment |
|---------------------------|---------------------------|-------------------|---------------|---------------------------------|
| | | +N/-S (ft) | +E/-W (ft) | |
| 7,728.9 | 7,143.1 | -445.0 | 741.9 | TPZ - 2183'FSL & 150'FEL Sec.34 |

Checked By: _____ Approved By: _____ Date: _____