

Bayswater Exploration & Production, LLC

Well Name: **Groves Farm N-34-33HN**

Surface Location: Groves Farm 34-L Pad Sec.34-T7N-R65W

North American Datum 1983 , US State Plane 1983, Colorado Northern Zone

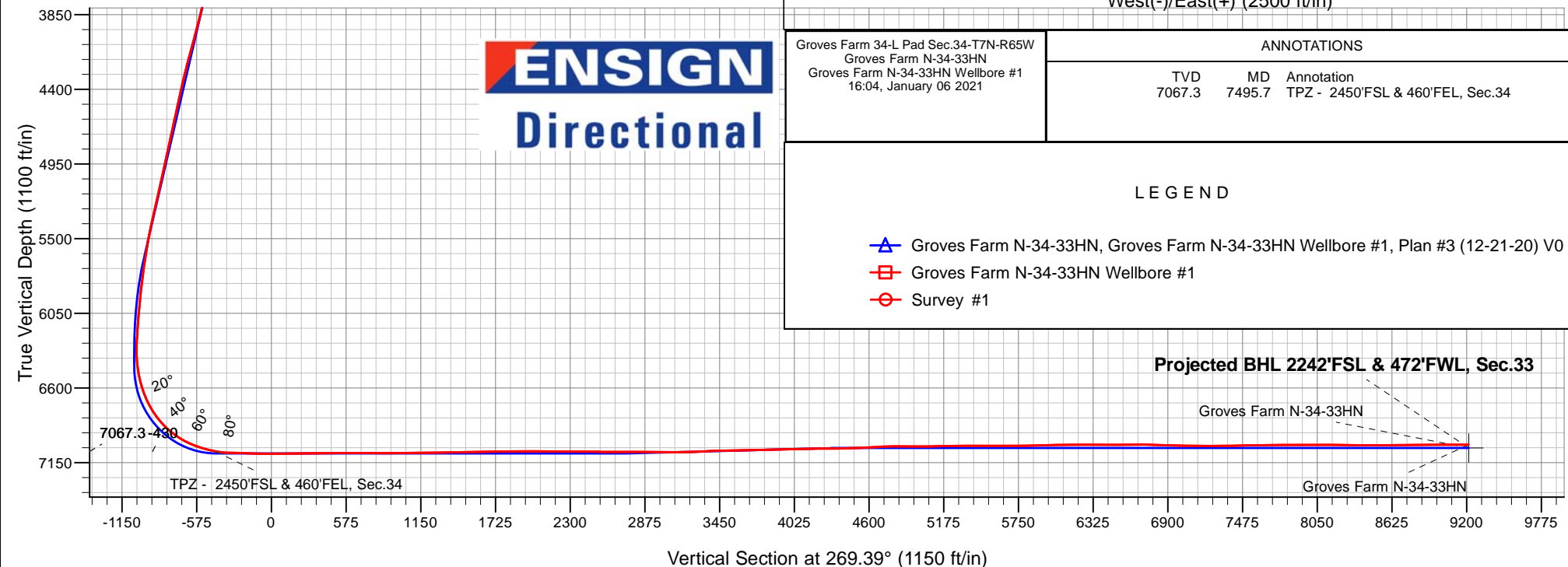
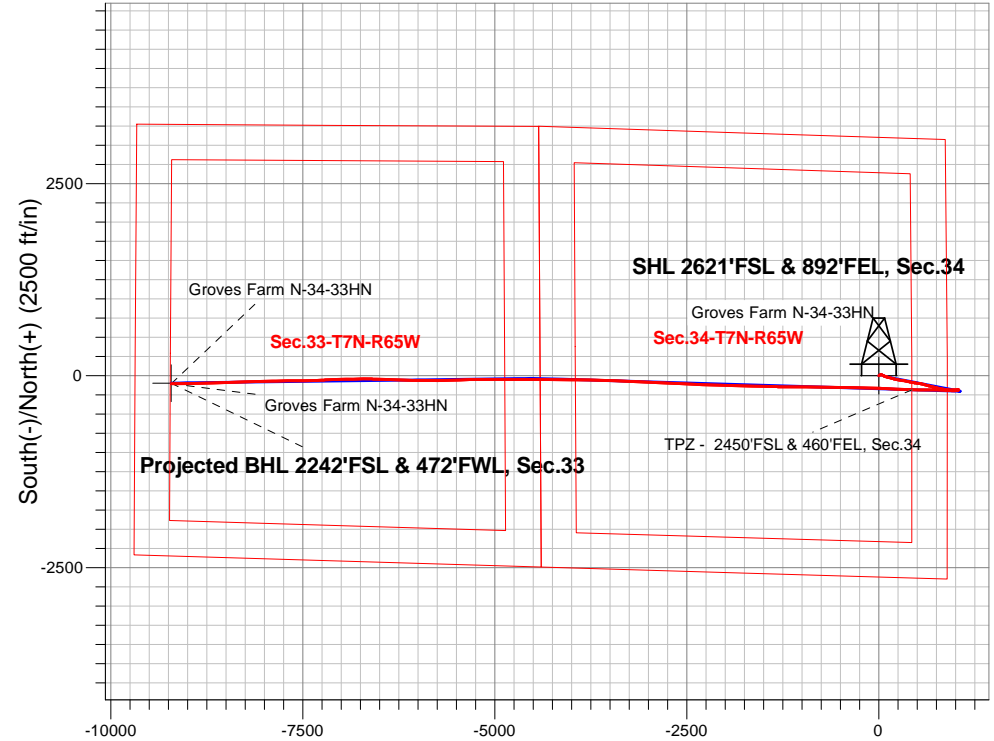
Ground Elevation: 4844.0

+N/-S	+E/-W	Northing	Easting	Latitude	Longitude	Slot
0.0	0.0	1437170.87	3238241.57	40.530274	-104.642926	

Ensign 153 RKB - 23' WELL @ 4867.0ft (Ensign 153 RKB - 23')

FINAL SURVEY

Projected Bottom Hole Location
17148'MD 7018'TVD 106'S & 9214'W of SHL
90.67° Inc @ 268.91° Azm





Bayswater Exploration & Production, LLC

SEC.34-T7N-R65W

Groves Farm 34-L Pad Sec.34-T7N-R65W

Groves Farm N-34-33HN

Groves Farm N-34-33HN Wellbore #1

Survey: Survey #1

Standard Survey Report

06 January, 2021



BAYSWATER
EXPLORATION & PRODUCTION, LLC

Company:	Bayswater Exploration & Production, LLC	Local Co-ordinate Reference:	Well Groves Farm N-34-33HN
Project:	SEC.34-T7N-R65W	TVD Reference:	WELL @ 4867.0ft (Ensign 153 RKB - 23')
Site:	Groves Farm 34-L Pad Sec.34-T7N-R65W	MD Reference:	WELL @ 4867.0ft (Ensign 153 RKB - 23')
Well:	Groves Farm N-34-33HN	North Reference:	True
Wellbore:	Groves Farm N-34-33HN Wellbore #1	Survey Calculation Method:	Minimum Curvature
Design:	Groves Farm N-34-33HN Wellbore #1	Database:	US_EDM

Project	SEC.34-T7N-R65W, Weld County, CO		
Map System:	US State Plane 1983	System Datum:	Mean Sea Level
Geo Datum:	North American Datum 1983		Using Well Reference Point
Map Zone:	Colorado Northern Zone		Using geodetic scale factor

Site	Groves Farm 34-L Pad Sec.34-T7N-R65W				
Site Position:		Northing:	1,437,170.88 usft	Latitude:	40.530274
From:	Lat/Long	Easting:	3,238,241.57 usft	Longitude:	-104.642926
Position Uncertainty:	0.0 ft	Slot Radius:	13-3/16 "	Grid Convergence:	0.55 °

Well	Groves Farm N-34-33HN					
Well Position	+N/-S	0.0 ft	Northing:	1,437,170.87 usft	Latitude:	40.530274
	+E/-W	0.0 ft	Easting:	3,238,241.57 usft	Longitude:	-104.642926
Position Uncertainty		0.0 ft	Wellhead Elevation:	0.0 ft	Ground Level:	4,844.0 ft

Wellbore	Groves Farm N-34-33HN Wellbore #1				
Magnetics	Model Name	Sample Date	Declination (°)	Dip Angle (°)	Field Strength (nT)
	HDGM	12/21/2020	7.75	66.85	52,054

Design	Groves Farm N-34-33HN Wellbore #1				
Audit Notes:					
Version:	1.0	Phase:	ACTUAL	Tie On Depth:	0.0
Vertical Section:	Depth From (TVD) (ft)	+N/-S (ft)	+E/-W (ft)	Direction (°)	
	0.0	0.0	0.0	269.39	

Survey Program	Date	01/06/2021			
From (ft)	To (ft)	Survey (Wellbore)	Tool Name	Description	
234.0	17,148.0	Survey #1 (Groves Farm N-34-33HN Wellb	MWD	MWD - Standard	

Survey										
Measured Depth (ft)	Inclination (°)	Azimuth (°)	Vertical Depth (ft)	+N/-S (ft)	+E/-W (ft)	Vertical Section (ft)	Dogleg Rate (°/100usft)	Build Rate (°/100usft)	Turn Rate (°/100usft)	
0.0	0.00	0.00	0.0	0.0	0.0	0.0	0.00	0.00	0.00	
234.0	1.49	57.87	234.0	1.6	2.6	-2.6	0.64	0.64	0.00	
323.0	1.85	61.21	322.9	2.9	4.8	-4.8	0.42	0.40	3.75	
413.0	2.20	59.80	412.9	4.5	7.6	-7.6	0.39	0.39	-1.57	
503.0	2.55	58.75	502.8	6.4	10.8	-10.9	0.39	0.39	-1.17	
592.0	2.64	61.73	591.7	8.4	14.3	-14.4	0.18	0.10	3.35	
681.0	2.37	58.57	680.6	10.3	17.7	-17.8	0.34	-0.30	-3.55	
771.0	1.93	51.83	770.6	12.2	20.4	-20.6	0.56	-0.49	-7.49	
860.0	2.37	48.90	859.5	14.4	23.0	-23.2	0.51	0.49	-3.29	
949.0	1.49	61.03	948.4	16.1	25.4	-25.6	1.08	-0.99	13.63	

Company:	Bayswater Exploration & Production, LLC	Local Co-ordinate Reference:	Well Groves Farm N-34-33HN
Project:	SEC.34-T7N-R65W	TVD Reference:	WELL @ 4867.0ft (Ensign 153 RKB - 23')
Site:	Groves Farm 34-L Pad Sec.34-T7N-R65W	MD Reference:	WELL @ 4867.0ft (Ensign 153 RKB - 23')
Well:	Groves Farm N-34-33HN	North Reference:	True
Wellbore:	Groves Farm N-34-33HN Wellbore #1	Survey Calculation Method:	Minimum Curvature
Design:	Groves Farm N-34-33HN Wellbore #1	Database:	US_EDM

Survey										
Measured Depth (ft)	Inclination (°)	Azimuth (°)	Vertical Depth (ft)	+N/-S (ft)	+E/-W (ft)	Vertical Section (ft)	Dogleg Rate (°/100usft)	Build Rate (°/100usft)	Turn Rate (°/100usft)	
1,039.0	1.67	64.37	1,038.4	17.3	27.6	-27.8	0.22	0.20	3.71	
1,128.0	2.46	123.26	1,127.4	16.8	30.4	-30.6	2.41	0.89	66.17	
1,218.0	3.17	126.42	1,217.3	14.3	34.0	-34.1	0.81	0.79	3.51	
1,307.0	3.61	125.72	1,306.1	11.2	38.2	-38.4	0.50	0.49	-0.79	
1,397.0	3.87	124.66	1,395.9	7.8	43.0	-43.1	0.30	0.29	-1.18	
1,498.0	4.31	119.22	1,496.7	4.0	49.2	-49.2	0.58	0.44	-5.39	
1,511.6	4.34	119.37	1,510.2	3.5	50.1	-50.1	0.24	0.22	1.11	
1,525.1	4.37	119.54	1,523.7	3.0	51.0	-51.0	0.24	0.22	1.25	
1,538.7	4.41	119.68	1,537.2	2.5	51.9	-51.9	0.31	0.29	1.03	
1,552.3	4.45	119.75	1,550.8	1.9	52.8	-52.8	0.30	0.29	0.52	
1,565.9	4.49	119.71	1,564.3	1.4	53.7	-53.7	0.30	0.29	-0.29	
1,579.4	4.55	119.50	1,577.8	0.9	54.6	-54.6	0.46	0.44	-1.55	
1,593.0	4.63	119.02	1,591.4	0.4	55.6	-55.6	0.65	0.59	-3.54	
1,608.0	4.73	118.07	1,606.3	-0.2	56.6	-56.6	0.84	0.67	-6.33	
1,623.0	4.86	116.94	1,621.3	-0.8	57.7	-57.7	1.07	0.87	-7.53	
1,638.0	4.99	115.82	1,636.2	-1.4	58.9	-58.9	1.08	0.87	-7.47	
1,653.0	5.11	114.87	1,651.1	-1.9	60.1	-60.1	0.98	0.80	-6.33	
1,668.0	5.20	114.25	1,666.1	-2.5	61.3	-61.3	0.71	0.60	-4.13	
1,683.0	6.64	108.26	1,681.0	-3.1	62.8	-62.7	10.43	9.60	-39.93	
1,697.8	6.91	107.85	1,695.7	-3.6	64.4	-64.4	1.85	1.82	-2.76	
1,712.7	6.90	108.58	1,710.5	-4.2	66.1	-66.1	0.60	-0.07	4.92	
1,727.5	6.88	109.46	1,725.2	-4.7	67.8	-67.8	0.72	-0.13	5.93	
1,742.3	6.85	110.36	1,739.9	-5.3	69.5	-69.4	0.75	-0.20	6.07	
1,757.2	6.83	111.14	1,754.6	-6.0	71.1	-71.1	0.64	-0.13	5.26	
1,772.0	7.79	112.53	1,769.4	-6.7	72.9	-72.8	6.58	6.47	9.37	
1,787.0	7.78	112.60	1,784.2	-7.4	74.8	-74.7	0.09	-0.07	0.47	
1,802.0	7.79	112.48	1,799.1	-8.2	76.6	-76.5	0.13	0.07	-0.80	
1,817.0	7.80	112.23	1,813.9	-9.0	78.5	-78.4	0.24	0.07	-1.67	
1,832.0	7.81	111.92	1,828.8	-9.8	80.4	-80.3	0.29	0.07	-2.07	
1,847.0	7.81	111.59	1,843.7	-10.5	82.3	-82.2	0.30	0.00	-2.20	
1,862.0	7.80	111.28	1,858.5	-11.3	84.2	-84.1	0.29	-0.07	-2.07	
1,877.0	7.76	111.04	1,873.4	-12.0	86.1	-85.9	0.34	-0.27	-1.60	
1,892.0	7.70	110.96	1,888.3	-12.7	88.0	-87.8	0.41	-0.40	-0.53	
1,907.0	7.65	110.87	1,903.1	-13.4	89.8	-89.7	0.34	-0.33	-0.60	
1,922.0	7.59	110.75	1,918.0	-14.1	91.7	-91.5	0.41	-0.40	-0.80	
1,937.0	7.55	110.60	1,932.9	-14.8	93.5	-93.4	0.30	-0.27	-1.00	
1,952.0	8.85	106.08	1,947.7	-15.5	95.6	-95.4	9.67	8.67	-30.13	
1,966.7	8.85	105.85	1,962.2	-16.1	97.7	-97.6	0.24	0.00	-1.57	
1,981.3	8.87	105.59	1,976.7	-16.7	99.9	-99.7	0.31	0.14	-1.77	
1,996.0	8.91	105.35	1,991.2	-17.3	102.1	-101.9	0.37	0.27	-1.64	
2,010.7	8.96	105.17	2,005.7	-17.9	104.3	-104.1	0.39	0.34	-1.23	
2,025.3	9.04	105.08	2,020.1	-18.5	106.5	-106.3	0.55	0.55	-0.61	
2,040.0	10.05	102.97	2,034.6	-19.1	108.9	-108.7	7.29	6.88	-14.38	
2,055.0	10.34	102.98	2,049.4	-19.7	111.5	-111.2	1.93	1.93	0.07	

Company:	Bayswater Exploration & Production, LLC	Local Co-ordinate Reference:	Well Groves Farm N-34-33HN
Project:	SEC.34-T7N-R65W	TVD Reference:	WELL @ 4867.0ft (Ensign 153 RKB - 23')
Site:	Groves Farm 34-L Pad Sec.34-T7N-R65W	MD Reference:	WELL @ 4867.0ft (Ensign 153 RKB - 23')
Well:	Groves Farm N-34-33HN	North Reference:	True
Wellbore:	Groves Farm N-34-33HN Wellbore #1	Survey Calculation Method:	Minimum Curvature
Design:	Groves Farm N-34-33HN Wellbore #1	Database:	US_EDM

Survey										
Measured Depth (ft)	Inclination (°)	Azimuth (°)	Vertical Depth (ft)	+N/-S (ft)	+E/-W (ft)	Vertical Section (ft)	Dogleg Rate (°/100usft)	Build Rate (°/100usft)	Turn Rate (°/100usft)	
2,070.0	10.52	103.36	2,064.1	-20.3	114.1	-113.9	1.28	1.20	2.53	
2,085.0	10.71	103.78	2,078.9	-21.0	116.8	-116.6	1.37	1.27	2.80	
2,100.0	10.88	104.17	2,093.6	-21.7	119.5	-119.3	1.23	1.13	2.60	
2,115.0	11.02	104.49	2,108.3	-22.4	122.3	-122.0	1.02	0.93	2.13	
2,130.0	11.97	105.33	2,123.0	-23.1	125.2	-124.9	6.43	6.33	5.60	
2,145.0	12.56	105.74	2,137.7	-24.0	128.2	-128.0	3.98	3.93	2.73	
2,160.0	12.48	105.63	2,152.3	-24.9	131.4	-131.1	0.56	-0.53	-0.73	
2,175.0	12.38	105.46	2,167.0	-25.7	134.5	-134.2	0.71	-0.67	-1.13	
2,190.0	12.25	105.25	2,181.6	-26.6	137.6	-137.3	0.92	-0.87	-1.40	
2,205.0	12.12	105.05	2,196.3	-27.4	140.6	-140.3	0.91	-0.87	-1.33	
2,220.0	12.00	104.89	2,211.0	-28.2	143.6	-143.3	0.83	-0.80	-1.07	
2,234.8	11.91	104.84	2,225.5	-29.0	146.6	-146.3	0.61	-0.61	-0.34	
2,249.7	11.83	104.85	2,240.0	-29.8	149.6	-149.2	0.54	-0.54	0.07	
2,264.5	11.77	104.91	2,254.5	-30.6	152.5	-152.2	0.41	-0.40	0.40	
2,279.3	11.73	104.99	2,269.0	-31.4	155.4	-155.1	0.29	-0.27	0.54	
2,294.2	11.70	105.08	2,283.6	-32.1	158.3	-158.0	0.24	-0.20	0.61	
2,309.0	12.83	106.05	2,298.1	-33.0	161.4	-161.0	7.75	7.62	6.54	
2,323.8	13.20	106.40	2,312.5	-33.9	164.6	-164.2	2.55	2.49	2.36	
2,338.7	13.26	106.54	2,327.0	-34.9	167.8	-167.4	0.46	0.40	0.94	
2,353.5	13.33	106.68	2,341.4	-35.9	171.1	-170.7	0.52	0.47	0.94	
2,368.3	13.40	106.83	2,355.8	-36.8	174.4	-174.0	0.53	0.47	1.01	
2,383.2	13.46	106.96	2,370.2	-37.8	177.7	-177.3	0.45	0.40	0.88	
2,398.0	14.85	105.17	2,384.6	-38.8	181.2	-180.7	9.83	9.37	-12.07	
2,413.0	14.98	105.09	2,399.1	-39.9	184.9	-184.5	0.88	0.87	-0.53	
2,428.0	14.93	105.18	2,413.6	-40.9	188.6	-188.2	0.37	-0.33	0.60	
2,443.0	14.87	105.25	2,428.1	-41.9	192.3	-191.9	0.42	-0.40	0.47	
2,458.0	14.79	105.30	2,442.6	-42.9	196.0	-195.6	0.54	-0.53	0.33	
2,473.0	14.71	105.30	2,457.1	-43.9	199.7	-199.3	0.53	-0.53	0.00	
2,488.0	14.62	105.24	2,471.6	-44.9	203.4	-202.9	0.61	-0.60	-0.40	
2,502.8	14.52	105.07	2,486.0	-45.9	207.0	-206.5	0.73	-0.67	-1.15	
2,517.7	14.42	104.84	2,500.3	-46.8	210.6	-210.1	0.78	-0.67	-1.55	
2,532.5	14.33	104.56	2,514.7	-47.8	214.1	-213.6	0.77	-0.61	-1.89	
2,547.3	14.23	104.24	2,529.1	-48.7	217.7	-217.2	0.86	-0.67	-2.16	
2,562.2	14.15	103.91	2,543.5	-49.6	221.2	-220.7	0.77	-0.54	-2.22	
2,577.0	14.08	103.55	2,557.9	-50.4	224.7	-224.2	0.76	-0.47	-2.43	
2,592.0	14.03	103.19	2,572.4	-51.3	228.3	-227.7	0.67	-0.33	-2.40	
2,607.0	14.00	102.84	2,587.0	-52.1	231.8	-231.2	0.60	-0.20	-2.33	
2,622.0	13.97	102.48	2,601.5	-52.9	235.3	-234.8	0.61	-0.20	-2.40	
2,637.0	13.96	102.14	2,616.1	-53.6	238.9	-238.3	0.55	-0.07	-2.27	
2,652.0	13.96	101.83	2,630.6	-54.4	242.4	-241.8	0.50	0.00	-2.07	
2,667.0	15.34	100.27	2,645.1	-55.1	246.1	-245.5	9.57	9.20	-10.40	
2,682.0	15.37	100.06	2,659.6	-55.8	250.1	-249.4	0.42	0.20	-1.40	
2,697.0	15.41	99.87	2,674.1	-56.5	254.0	-253.4	0.43	0.27	-1.27	

Company:	Bayswater Exploration & Production, LLC	Local Co-ordinate Reference:	Well Groves Farm N-34-33HN
Project:	SEC.34-T7N-R65W	TVD Reference:	WELL @ 4867.0ft (Ensign 153 RKB - 23')
Site:	Groves Farm 34-L Pad Sec.34-T7N-R65W	MD Reference:	WELL @ 4867.0ft (Ensign 153 RKB - 23')
Well:	Groves Farm N-34-33HN	North Reference:	True
Wellbore:	Groves Farm N-34-33HN Wellbore #1	Survey Calculation Method:	Minimum Curvature
Design:	Groves Farm N-34-33HN Wellbore #1	Database:	US_EDM

Survey										
Measured Depth (ft)	Inclination (°)	Azimuth (°)	Vertical Depth (ft)	+N/-S (ft)	+E/-W (ft)	Vertical Section (ft)	Dogleg Rate (°/100usft)	Build Rate (°/100usft)	Turn Rate (°/100usft)	
2,712.0	15.45	99.69	2,688.5	-57.2	257.9	-257.3	0.42	0.27	-1.20	
2,727.0	15.49	99.52	2,703.0	-57.9	261.9	-261.2	0.40	0.27	-1.13	
2,742.0	15.51	99.36	2,717.4	-58.5	265.8	-265.2	0.31	0.13	-1.07	
2,757.0	15.51	99.20	2,731.9	-59.2	269.8	-269.1	0.29	0.00	-1.07	
2,771.8	15.47	99.04	2,746.2	-59.8	273.7	-273.0	0.39	-0.27	-1.08	
2,786.7	15.40	98.88	2,760.5	-60.4	277.6	-276.9	0.55	-0.47	-1.08	
2,801.5	15.31	98.72	2,774.8	-61.0	281.5	-280.8	0.67	-0.61	-1.08	
2,816.3	15.22	98.55	2,789.1	-61.6	285.3	-284.7	0.68	-0.61	-1.15	
2,831.2	15.13	98.38	2,803.4	-62.2	289.2	-288.5	0.68	-0.61	-1.15	
2,846.0	15.05	98.21	2,817.7	-62.7	293.0	-292.3	0.62	-0.54	-1.15	
2,861.0	14.99	98.03	2,832.2	-63.3	296.8	-296.1	0.51	-0.40	-1.20	
2,876.0	14.93	97.85	2,846.7	-63.8	300.7	-300.0	0.51	-0.40	-1.20	
2,891.0	14.89	97.68	2,861.2	-64.3	304.5	-303.8	0.40	-0.27	-1.13	
2,906.0	14.85	97.53	2,875.7	-64.8	308.3	-307.6	0.37	-0.27	-1.00	
2,921.0	14.82	97.41	2,890.2	-65.3	312.1	-311.4	0.29	-0.20	-0.80	
2,936.0	14.79	97.34	2,904.7	-65.8	315.9	-315.2	0.23	-0.20	-0.47	
2,949.9	14.78	97.35	2,918.1	-66.3	319.4	-318.7	0.07	-0.07	0.07	
2,963.7	14.77	97.41	2,931.5	-66.7	322.9	-322.2	0.13	-0.07	0.43	
2,977.6	14.76	97.49	2,945.0	-67.2	326.4	-325.7	0.16	-0.07	0.58	
2,991.5	14.76	97.58	2,958.4	-67.6	329.9	-329.2	0.17	0.00	0.65	
3,005.4	14.75	97.67	2,971.8	-68.1	333.4	-332.7	0.18	-0.07	0.65	
3,019.2	14.81	98.74	2,985.2	-68.6	337.0	-336.2	2.01	0.43	7.71	
3,033.1	15.16	102.72	2,998.6	-69.3	340.5	-339.7	7.83	2.52	28.67	
3,047.0	15.12	102.72	3,012.0	-70.1	344.0	-343.2	0.29	-0.29	0.00	
3,062.0	15.05	102.66	3,026.5	-70.9	347.8	-347.0	0.48	-0.47	-0.40	
3,077.0	14.97	102.55	3,041.0	-71.8	351.6	-350.8	0.57	-0.53	-0.73	
3,092.0	14.88	102.42	3,055.5	-72.6	355.4	-354.6	0.64	-0.60	-0.87	
3,107.0	14.78	102.27	3,070.0	-73.5	359.1	-358.3	0.71	-0.67	-1.00	
3,122.0	14.67	102.12	3,084.5	-74.3	362.9	-362.1	0.78	-0.73	-1.00	
3,137.0	14.57	101.96	3,099.0	-75.0	366.6	-365.7	0.72	-0.67	-1.07	
3,151.8	14.46	101.83	3,113.3	-75.8	370.2	-369.4	0.77	-0.74	-0.88	
3,166.7	14.36	101.71	3,127.7	-76.6	373.8	-373.0	0.70	-0.67	-0.81	
3,181.5	14.25	101.59	3,142.1	-77.3	377.4	-376.6	0.77	-0.74	-0.81	
3,196.3	14.16	101.47	3,156.5	-78.0	381.0	-380.1	0.64	-0.61	-0.81	
3,211.2	14.07	101.35	3,170.9	-78.7	384.5	-383.7	0.64	-0.61	-0.81	
3,226.0	13.99	101.22	3,185.2	-79.5	388.0	-387.2	0.58	-0.54	-0.88	
3,241.0	13.94	101.10	3,199.8	-80.2	391.6	-390.7	0.39	-0.33	-0.80	
3,256.0	13.90	100.99	3,214.4	-80.8	395.1	-394.3	0.32	-0.27	-0.73	
3,271.0	13.86	100.87	3,228.9	-81.5	398.7	-397.8	0.33	-0.27	-0.80	
3,286.0	13.84	100.78	3,243.5	-82.2	402.2	-401.3	0.20	-0.13	-0.60	
3,301.0	13.81	100.71	3,258.1	-82.9	405.7	-404.8	0.23	-0.20	-0.47	
3,316.0	13.78	100.68	3,272.6	-83.5	409.2	-408.3	0.21	-0.20	-0.20	
3,330.7	13.75	100.71	3,286.9	-84.2	412.7	-411.7	0.21	-0.20	0.20	

Company:	Bayswater Exploration & Production, LLC	Local Co-ordinate Reference:	Well Groves Farm N-34-33HN
Project:	SEC.34-T7N-R65W	TVD Reference:	WELL @ 4867.0ft (Ensign 153 RKB - 23')
Site:	Groves Farm 34-L Pad Sec.34-T7N-R65W	MD Reference:	WELL @ 4867.0ft (Ensign 153 RKB - 23')
Well:	Groves Farm N-34-33HN	North Reference:	True
Wellbore:	Groves Farm N-34-33HN Wellbore #1	Survey Calculation Method:	Minimum Curvature
Design:	Groves Farm N-34-33HN Wellbore #1	Database:	US_EDM

Survey									
Measured Depth (ft)	Inclination (°)	Azimuth (°)	Vertical Depth (ft)	+N/-S (ft)	+E/-W (ft)	Vertical Section (ft)	Dogleg Rate (°/100usft)	Build Rate (°/100usft)	Turn Rate (°/100usft)
3,345.3	13.71	100.78	3,301.1	-84.8	416.1	-415.2	0.30	-0.27	0.48
3,360.0	13.67	100.87	3,315.4	-85.5	419.5	-418.6	0.31	-0.27	0.61
3,374.7	13.62	100.96	3,329.6	-86.1	422.9	-422.0	0.37	-0.34	0.61
3,389.3	13.55	101.03	3,343.9	-86.8	426.3	-425.3	0.49	-0.48	0.48
3,404.0	14.36	101.92	3,358.1	-87.5	429.7	-428.8	5.71	5.52	6.07
3,419.0	14.36	102.04	3,372.6	-88.3	433.4	-432.4	0.20	0.00	0.80
3,434.0	14.23	102.00	3,387.2	-89.0	437.0	-436.0	0.87	-0.87	-0.27
3,449.0	14.09	101.94	3,401.7	-89.8	440.6	-439.6	0.94	-0.93	-0.40
3,464.0	13.94	101.85	3,416.3	-90.6	444.1	-443.2	1.01	-1.00	-0.60
3,479.0	13.80	101.72	3,430.8	-91.3	447.7	-446.7	0.96	-0.93	-0.87
3,494.0	13.67	101.55	3,445.4	-92.0	451.1	-450.1	0.91	-0.87	-1.13
3,508.8	13.56	101.31	3,459.8	-92.7	454.6	-453.6	0.83	-0.74	-1.62
3,523.7	13.46	101.03	3,474.2	-93.4	458.0	-457.0	0.81	-0.67	-1.89
3,538.5	13.36	100.71	3,488.7	-94.0	461.3	-460.3	0.84	-0.67	-2.16
3,553.3	13.27	100.37	3,503.1	-94.6	464.7	-463.7	0.80	-0.61	-2.29
3,568.2	13.17	100.01	3,517.6	-95.2	468.0	-467.0	0.87	-0.67	-2.43
3,583.0	14.30	99.60	3,532.0	-95.8	471.5	-470.5	7.65	7.62	-2.76
3,598.0	14.50	99.21	3,546.5	-96.5	475.2	-474.1	1.48	1.33	-2.60
3,613.0	14.38	98.81	3,561.0	-97.0	478.9	-477.8	1.04	-0.80	-2.67
3,628.0	14.25	98.41	3,575.5	-97.6	482.6	-481.5	1.09	-0.87	-2.67
3,643.0	14.11	98.00	3,590.1	-98.1	486.2	-485.1	1.15	-0.93	-2.73
3,658.0	13.96	97.60	3,604.6	-98.6	489.8	-488.7	1.19	-1.00	-2.67
3,673.0	13.80	97.22	3,619.2	-99.1	493.4	-492.3	1.23	-1.07	-2.53
3,687.8	13.60	96.94	3,633.6	-99.5	496.9	-495.8	1.42	-1.35	-1.89
3,702.7	13.40	96.68	3,648.0	-99.9	500.3	-499.2	1.41	-1.35	-1.75
3,717.5	13.18	96.43	3,662.5	-100.3	503.7	-502.6	1.53	-1.48	-1.69
3,732.3	12.97	96.17	3,676.9	-100.7	507.0	-505.9	1.47	-1.42	-1.75
3,747.2	12.76	95.88	3,691.4	-101.0	510.3	-509.2	1.48	-1.42	-1.95
3,762.0	13.96	98.35	3,705.8	-101.5	513.7	-512.6	8.96	8.09	16.66
3,776.8	14.34	98.97	3,720.2	-102.0	517.3	-516.2	2.76	2.56	4.18
3,791.7	14.15	98.49	3,734.6	-102.6	520.9	-519.8	1.51	-1.28	-3.23
3,806.5	13.96	98.01	3,749.0	-103.1	524.5	-523.3	1.50	-1.28	-3.24
3,821.3	13.80	97.59	3,763.4	-103.6	528.0	-526.9	1.27	-1.08	-2.83
3,836.2	13.67	97.33	3,777.8	-104.0	531.5	-530.3	0.97	-0.88	-1.75
3,851.0	13.59	97.34	3,792.2	-104.5	534.9	-533.8	0.54	-0.54	0.07
3,866.0	13.59	97.83	3,806.8	-104.9	538.4	-537.3	0.77	0.00	3.27
3,881.0	13.66	98.57	3,821.4	-105.4	541.9	-540.8	1.25	0.47	4.93
3,896.0	13.76	99.42	3,835.9	-106.0	545.4	-544.3	1.50	0.67	5.67
3,911.0	13.88	100.28	3,850.5	-106.6	549.0	-547.8	1.59	0.80	5.73
3,926.0	14.00	101.03	3,865.0	-107.3	552.5	-551.4	1.45	0.80	5.00
3,941.0	14.98	103.63	3,879.6	-108.1	556.2	-555.0	7.84	6.53	17.33
3,956.0	15.45	104.77	3,894.0	-109.0	560.0	-558.8	3.71	3.13	7.60
3,971.0	15.57	105.05	3,908.5	-110.1	563.9	-562.7	0.94	0.80	1.87
3,986.0	15.70	105.26	3,922.9	-111.1	567.8	-566.6	0.95	0.87	1.40

Company:	Bayswater Exploration & Production, LLC	Local Co-ordinate Reference:	Well Groves Farm N-34-33HN
Project:	SEC.34-T7N-R65W	TVD Reference:	WELL @ 4867.0ft (Ensign 153 RKB - 23')
Site:	Groves Farm 34-L Pad Sec.34-T7N-R65W	MD Reference:	WELL @ 4867.0ft (Ensign 153 RKB - 23')
Well:	Groves Farm N-34-33HN	North Reference:	True
Wellbore:	Groves Farm N-34-33HN Wellbore #1	Survey Calculation Method:	Minimum Curvature
Design:	Groves Farm N-34-33HN Wellbore #1	Database:	US_EDM

Survey									
Measured Depth (ft)	Inclination (°)	Azimuth (°)	Vertical Depth (ft)	+N/-S (ft)	+E/-W (ft)	Vertical Section (ft)	Dogleg Rate (°/100usft)	Build Rate (°/100usft)	Turn Rate (°/100usft)
4,001.0	15.83	105.42	3,937.4	-112.2	571.7	-570.5	0.91	0.87	1.07
4,016.0	15.96	105.54	3,951.8	-113.3	575.7	-574.4	0.89	0.87	0.80
4,031.0	16.08	105.63	3,966.2	-114.4	579.7	-578.4	0.82	0.80	0.60
4,045.8	16.18	105.68	3,980.5	-115.5	583.6	-582.4	0.68	0.67	0.34
4,060.7	16.28	105.70	3,994.7	-116.6	587.6	-586.4	0.67	0.67	0.13
4,075.5	16.36	105.69	4,008.9	-117.8	591.6	-590.4	0.54	0.54	-0.07
4,090.3	16.43	105.67	4,023.2	-118.9	595.7	-594.4	0.47	0.47	-0.13
4,105.2	16.49	105.62	4,037.4	-120.0	599.7	-598.4	0.42	0.40	-0.34
4,120.0	16.52	105.55	4,051.6	-121.2	603.8	-602.5	0.24	0.20	-0.47
4,134.8	16.53	105.45	4,065.8	-122.3	607.8	-606.5	0.20	0.07	-0.67
4,149.7	16.51	105.32	4,080.1	-123.4	611.9	-610.6	0.28	-0.13	-0.88
4,164.5	16.47	105.18	4,094.3	-124.5	616.0	-614.6	0.38	-0.27	-0.94
4,179.3	16.42	105.03	4,108.5	-125.6	620.0	-618.7	0.44	-0.34	-1.01
4,194.2	16.36	104.89	4,122.8	-126.7	624.1	-622.7	0.48	-0.40	-0.94
4,209.0	16.28	104.75	4,137.0	-127.8	628.1	-626.7	0.60	-0.54	-0.94
4,223.8	16.18	104.65	4,151.2	-128.8	632.1	-630.7	0.70	-0.67	-0.67
4,238.7	16.07	104.57	4,165.5	-129.9	636.1	-634.7	0.76	-0.74	-0.54
4,253.5	15.95	104.50	4,179.7	-130.9	640.0	-638.6	0.82	-0.81	-0.47
4,268.3	15.82	104.45	4,194.0	-131.9	644.0	-642.5	0.88	-0.88	-0.34
4,283.2	15.68	104.40	4,208.3	-132.9	647.9	-646.4	0.95	-0.94	-0.34
4,298.0	15.54	104.38	4,222.6	-133.9	651.7	-650.3	0.94	-0.94	-0.13
4,313.0	15.39	104.39	4,237.0	-134.9	655.6	-654.2	1.00	-1.00	0.07
4,328.0	15.24	104.42	4,251.5	-135.9	659.5	-658.0	1.00	-1.00	0.20
4,343.0	15.09	104.45	4,266.0	-136.8	663.3	-661.8	1.00	-1.00	0.20
4,358.0	14.94	104.48	4,280.5	-137.8	667.0	-665.5	1.00	-1.00	0.20
4,373.0	14.78	104.50	4,295.0	-138.8	670.7	-669.2	1.07	-1.07	0.13
4,388.0	14.63	104.50	4,309.5	-139.7	674.4	-672.9	1.00	-1.00	0.00
4,402.8	14.48	104.46	4,323.8	-140.7	678.0	-676.5	1.01	-1.01	-0.27
4,417.7	14.34	104.38	4,338.2	-141.6	681.6	-680.1	0.95	-0.94	-0.54
4,432.5	14.19	104.29	4,352.6	-142.5	685.2	-683.6	1.02	-1.01	-0.61
4,447.3	14.05	104.18	4,366.9	-143.4	688.7	-687.1	0.96	-0.94	-0.74
4,462.2	13.91	104.07	4,381.3	-144.3	692.1	-690.6	0.96	-0.94	-0.74
4,477.0	13.77	103.93	4,395.7	-145.1	695.6	-694.0	0.97	-0.94	-0.94
4,491.8	13.65	103.80	4,410.2	-146.0	699.0	-697.4	0.84	-0.81	-0.88
4,506.7	13.52	103.66	4,424.6	-146.8	702.4	-700.8	0.90	-0.88	-0.94
4,521.5	13.41	103.53	4,439.0	-147.6	705.7	-704.1	0.77	-0.74	-0.88
4,536.3	13.30	103.42	4,453.4	-148.4	709.1	-707.5	0.76	-0.74	-0.74
4,551.2	13.19	103.36	4,467.9	-149.2	712.4	-710.8	0.75	-0.74	-0.40
4,566.0	13.10	103.37	4,482.3	-150.0	715.7	-714.0	0.61	-0.61	0.07
4,581.0	13.04	103.52	4,496.9	-150.7	719.0	-717.3	0.46	-0.40	1.00
4,596.0	12.98	103.72	4,511.5	-151.5	722.2	-720.6	0.50	-0.40	1.33
4,611.0	12.92	103.96	4,526.2	-152.3	725.5	-723.9	0.54	-0.40	1.60
4,626.0	12.86	104.17	4,540.8	-153.2	728.7	-727.1	0.51	-0.40	1.40

Company:	Bayswater Exploration & Production, LLC	Local Co-ordinate Reference:	Well Groves Farm N-34-33HN
Project:	SEC.34-T7N-R65W	TVD Reference:	WELL @ 4867.0ft (Ensign 153 RKB - 23')
Site:	Groves Farm 34-L Pad Sec.34-T7N-R65W	MD Reference:	WELL @ 4867.0ft (Ensign 153 RKB - 23')
Well:	Groves Farm N-34-33HN	North Reference:	True
Wellbore:	Groves Farm N-34-33HN Wellbore #1	Survey Calculation Method:	Minimum Curvature
Design:	Groves Farm N-34-33HN Wellbore #1	Database:	US_EDM

Survey									
Measured Depth (ft)	Inclination (°)	Azimuth (°)	Vertical Depth (ft)	+N/-S (ft)	+E/-W (ft)	Vertical Section (ft)	Dogleg Rate (°/100usft)	Build Rate (°/100usft)	Turn Rate (°/100usft)
4,641.0	12.80	104.34	4,555.4	-154.0	732.0	-730.3	0.47	-0.40	1.13
4,656.0	13.42	104.84	4,570.0	-154.8	735.3	-733.6	4.20	4.13	3.33
4,670.8	14.37	105.37	4,584.4	-155.8	738.7	-737.0	6.46	6.41	3.57
4,685.7	14.25	105.17	4,598.8	-156.7	742.2	-740.5	0.87	-0.81	-1.35
4,700.5	14.12	104.89	4,613.2	-157.7	745.8	-744.0	0.99	-0.88	-1.89
4,715.3	13.99	104.57	4,627.6	-158.6	749.2	-747.5	1.02	-0.88	-2.16
4,730.2	13.85	104.23	4,642.0	-159.5	752.7	-751.0	1.09	-0.94	-2.29
4,745.0	13.71	103.89	4,656.4	-160.3	756.1	-754.4	1.09	-0.94	-2.29
4,759.8	13.57	103.60	4,670.8	-161.2	759.5	-757.8	1.05	-0.94	-1.96
4,774.7	13.43	103.32	4,685.2	-162.0	762.9	-761.1	1.04	-0.94	-1.89
4,789.5	13.28	103.07	4,699.6	-162.8	766.2	-764.5	1.08	-1.01	-1.69
4,804.3	13.13	102.82	4,714.1	-163.5	769.5	-767.8	1.08	-1.01	-1.69
4,819.2	12.96	102.59	4,728.5	-164.2	772.8	-771.0	1.20	-1.15	-1.55
4,834.0	12.77	102.39	4,743.0	-165.0	776.0	-774.2	1.32	-1.28	-1.35
4,848.8	12.54	102.24	4,757.5	-165.7	779.2	-777.4	1.57	-1.55	-1.01
4,863.7	12.30	102.12	4,771.9	-166.3	782.3	-780.5	1.63	-1.62	-0.81
4,878.5	12.04	102.00	4,786.4	-167.0	785.4	-783.6	1.76	-1.75	-0.81
4,893.3	11.80	101.89	4,801.0	-167.6	788.4	-786.5	1.63	-1.62	-0.74
4,908.2	11.57	101.78	4,815.5	-168.2	791.3	-789.5	1.56	-1.55	-0.74
4,923.0	13.44	101.03	4,830.0	-168.9	794.5	-792.6	12.66	12.61	-5.06
4,938.0	13.42	100.84	4,844.6	-169.5	797.9	-796.0	0.32	-0.13	-1.27
4,953.0	13.26	100.68	4,859.1	-170.2	801.3	-799.4	1.09	-1.07	-1.07
4,968.0	13.11	100.52	4,873.8	-170.8	804.6	-802.8	1.03	-1.00	-1.07
4,983.0	12.98	100.38	4,888.4	-171.4	808.0	-806.1	0.89	-0.87	-0.93
4,998.0	12.88	100.27	4,903.0	-172.0	811.3	-809.4	0.69	-0.67	-0.73
5,013.0	12.80	100.23	4,917.6	-172.6	814.5	-812.7	0.54	-0.53	-0.27
5,027.8	12.78	100.31	4,932.1	-173.2	817.8	-815.9	0.18	-0.13	0.54
5,042.7	12.77	100.45	4,946.5	-173.8	821.0	-819.1	0.22	-0.07	0.94
5,057.5	12.78	100.61	4,961.0	-174.4	824.2	-822.3	0.25	0.07	1.08
5,072.3	12.77	100.78	4,975.5	-175.0	827.5	-825.6	0.26	-0.07	1.15
5,087.2	12.74	100.91	4,989.9	-175.6	830.7	-828.8	0.28	-0.20	0.88
5,102.0	13.92	101.10	5,004.4	-176.3	834.0	-832.1	7.96	7.96	1.28
5,117.0	14.65	101.19	5,018.9	-177.0	837.7	-835.7	4.87	4.87	0.60
5,132.0	14.43	101.13	5,033.4	-177.7	841.4	-839.4	1.47	-1.47	-0.40
5,147.0	14.19	101.04	5,048.0	-178.4	845.0	-843.1	1.61	-1.60	-0.60
5,162.0	13.93	100.93	5,062.5	-179.1	848.6	-846.6	1.74	-1.73	-0.73
5,177.0	13.70	100.80	5,077.1	-179.8	852.1	-850.1	1.55	-1.53	-0.87
5,192.0	13.50	100.65	5,091.7	-180.4	855.6	-853.6	1.35	-1.33	-1.00
5,206.8	13.38	100.51	5,106.1	-181.1	858.9	-857.0	0.84	-0.81	-0.94
5,221.7	13.30	100.36	5,120.5	-181.7	862.3	-860.3	0.59	-0.54	-1.01
5,236.5	13.24	100.23	5,135.0	-182.3	865.7	-863.7	0.45	-0.40	-0.88
5,251.3	13.19	100.12	5,149.4	-182.9	869.0	-867.0	0.38	-0.34	-0.74
5,266.2	13.13	100.06	5,163.8	-183.5	872.3	-870.3	0.41	-0.40	-0.40

Company:	Bayswater Exploration & Production, LLC	Local Co-ordinate Reference:	Well Groves Farm N-34-33HN
Project:	SEC.34-T7N-R65W	TVD Reference:	WELL @ 4867.0ft (Ensign 153 RKB - 23')
Site:	Groves Farm 34-L Pad Sec.34-T7N-R65W	MD Reference:	WELL @ 4867.0ft (Ensign 153 RKB - 23')
Well:	Groves Farm N-34-33HN	North Reference:	True
Wellbore:	Groves Farm N-34-33HN Wellbore #1	Survey Calculation Method:	Minimum Curvature
Design:	Groves Farm N-34-33HN Wellbore #1	Database:	US_EDM

Survey									
Measured Depth (ft)	Inclination (°)	Azimuth (°)	Vertical Depth (ft)	+N/-S (ft)	+E/-W (ft)	Vertical Section (ft)	Dogleg Rate (°/100usft)	Build Rate (°/100usft)	Turn Rate (°/100usft)
5,281.0	13.05	100.08	5,178.3	-184.1	875.6	-873.6	0.54	-0.54	0.13
5,296.0	12.92	100.24	5,192.9	-184.7	878.9	-876.9	0.90	-0.87	1.07
5,311.0	12.77	100.47	5,207.5	-185.3	882.2	-880.2	1.06	-1.00	1.53
5,326.0	12.60	100.72	5,222.2	-185.9	885.5	-883.4	1.19	-1.13	1.67
5,341.0	12.42	100.93	5,236.8	-186.5	888.7	-886.6	1.24	-1.20	1.40
5,356.0	12.53	100.96	5,251.5	-187.1	891.8	-889.8	0.73	0.73	0.20
5,371.0	14.63	100.64	5,266.0	-187.8	895.3	-893.3	14.01	14.00	-2.13
5,385.8	14.43	100.44	5,280.4	-188.5	899.0	-896.9	1.39	-1.35	-1.35
5,400.7	14.23	100.15	5,294.8	-189.1	902.6	-900.5	1.43	-1.35	-1.95
5,415.5	14.02	99.79	5,309.2	-189.7	906.1	-904.1	1.53	-1.42	-2.43
5,430.3	13.81	99.39	5,323.5	-190.3	909.6	-907.6	1.56	-1.42	-2.70
5,445.2	13.60	98.96	5,338.0	-190.9	913.1	-911.1	1.57	-1.42	-2.90
5,460.0	13.38	98.51	5,352.4	-191.4	916.5	-914.5	1.64	-1.48	-3.03
5,474.8	13.16	98.10	5,366.8	-191.9	919.9	-917.8	1.61	-1.48	-2.76
5,489.7	12.93	97.68	5,381.3	-192.4	923.2	-921.1	1.68	-1.55	-2.83
5,504.5	12.71	97.25	5,395.7	-192.8	926.5	-924.4	1.62	-1.48	-2.90
5,519.3	12.48	96.80	5,410.2	-193.2	929.7	-927.6	1.69	-1.55	-3.03
5,534.2	12.26	96.33	5,424.7	-193.6	932.9	-930.8	1.63	-1.48	-3.17
5,549.0	12.05	95.84	5,439.2	-193.9	936.0	-933.9	1.58	-1.42	-3.30
5,563.8	11.84	95.34	5,453.7	-194.2	939.0	-936.9	1.58	-1.42	-3.37
5,578.7	11.64	94.83	5,468.2	-194.5	942.0	-939.9	1.52	-1.35	-3.44
5,593.5	11.43	94.30	5,482.8	-194.7	945.0	-942.9	1.59	-1.42	-3.57
5,608.3	11.23	93.78	5,497.3	-194.9	947.9	-945.8	1.51	-1.35	-3.51
5,623.2	11.03	93.27	5,511.9	-195.1	950.7	-948.6	1.50	-1.35	-3.44
5,638.0	10.83	92.79	5,526.4	-195.2	953.6	-951.4	1.48	-1.35	-3.24
5,652.8	10.61	92.42	5,541.0	-195.3	956.3	-954.2	1.55	-1.48	-2.49
5,667.7	10.40	92.10	5,555.6	-195.5	959.0	-956.9	1.47	-1.42	-2.16
5,682.5	10.18	91.79	5,570.2	-195.5	961.7	-959.5	1.53	-1.48	-2.09
5,697.3	9.96	91.46	5,584.8	-195.6	964.2	-962.1	1.53	-1.48	-2.23
5,712.2	9.75	91.11	5,599.4	-195.7	966.8	-964.7	1.47	-1.42	-2.36
5,727.0	9.55	90.68	5,614.0	-195.7	969.3	-967.2	1.43	-1.35	-2.90
5,742.0	9.35	90.13	5,628.8	-195.7	971.7	-969.6	1.46	-1.33	-3.67
5,757.0	9.17	89.50	5,643.6	-195.7	974.2	-972.0	1.38	-1.20	-4.20
5,772.0	8.99	88.82	5,658.4	-195.7	976.5	-974.4	1.40	-1.20	-4.53
5,787.0	8.81	88.11	5,673.3	-195.6	978.8	-976.7	1.41	-1.20	-4.73
5,802.0	8.63	87.40	5,688.1	-195.5	981.1	-979.0	1.40	-1.20	-4.73
5,817.0	8.45	86.72	5,702.9	-195.4	983.3	-981.2	1.38	-1.20	-4.53
5,831.8	8.26	86.18	5,717.6	-195.3	985.5	-983.4	1.39	-1.28	-3.64
5,846.7	8.07	85.69	5,732.3	-195.1	987.6	-985.5	1.36	-1.28	-3.30
5,861.5	7.88	85.24	5,747.0	-195.0	989.6	-987.5	1.35	-1.28	-3.03
5,876.3	7.69	84.82	5,761.7	-194.8	991.6	-989.5	1.34	-1.28	-2.83
5,891.2	7.51	84.44	5,776.4	-194.6	993.6	-991.5	1.26	-1.21	-2.56
5,906.0	7.34	84.11	5,791.1	-194.4	995.5	-993.4	1.18	-1.15	-2.23
5,921.0	7.19	83.87	5,806.0	-194.2	997.4	-995.3	1.02	-1.00	-1.60

Company:	Bayswater Exploration & Production, LLC	Local Co-ordinate Reference:	Well Groves Farm N-34-33HN
Project:	SEC.34-T7N-R65W	TVD Reference:	WELL @ 4867.0ft (Ensign 153 RKB - 23')
Site:	Groves Farm 34-L Pad Sec.34-T7N-R65W	MD Reference:	WELL @ 4867.0ft (Ensign 153 RKB - 23')
Well:	Groves Farm N-34-33HN	North Reference:	True
Wellbore:	Groves Farm N-34-33HN Wellbore #1	Survey Calculation Method:	Minimum Curvature
Design:	Groves Farm N-34-33HN Wellbore #1	Database:	US_EDM

Survey									
Measured Depth (ft)	Inclination (°)	Azimuth (°)	Vertical Depth (ft)	+N/-S (ft)	+E/-W (ft)	Vertical Section (ft)	Dogleg Rate (°/100usft)	Build Rate (°/100usft)	Turn Rate (°/100usft)
5,936.0	7.06	83.68	5,820.8	-194.0	999.2	-997.1	0.88	-0.87	-1.27
5,951.0	6.93	83.51	5,835.7	-193.8	1,001.1	-998.9	0.88	-0.87	-1.13
5,966.0	6.80	83.35	5,850.6	-193.6	1,002.8	-1,000.7	0.88	-0.87	-1.07
5,981.0	6.68	83.16	5,865.5	-193.4	1,004.6	-1,002.5	0.81	-0.80	-1.27
5,996.0	6.55	82.92	5,880.4	-193.2	1,006.3	-1,004.2	0.89	-0.87	-1.60
6,010.7	6.41	82.57	5,895.0	-193.0	1,007.9	-1,005.8	0.99	-0.95	-2.39
6,025.3	6.26	82.14	5,909.6	-192.8	1,009.5	-1,007.4	1.07	-1.02	-2.93
6,040.0	6.12	81.65	5,924.2	-192.6	1,011.1	-1,009.0	1.02	-0.95	-3.34
6,054.7	5.98	81.13	5,938.7	-192.3	1,012.6	-1,010.5	1.02	-0.95	-3.54
6,069.3	5.84	80.57	5,953.3	-192.1	1,014.1	-1,012.0	1.03	-0.95	-3.82
6,084.0	5.71	79.99	5,967.9	-191.8	1,015.6	-1,013.5	0.97	-0.89	-3.95
6,099.0	5.59	79.44	5,982.8	-191.6	1,017.0	-1,015.0	0.88	-0.80	-3.67
6,114.0	5.47	78.88	5,997.8	-191.3	1,018.5	-1,016.4	0.88	-0.80	-3.73
6,129.0	5.36	78.33	6,012.7	-191.0	1,019.8	-1,017.8	0.81	-0.73	-3.67
6,144.0	5.26	77.82	6,027.6	-190.7	1,021.2	-1,019.1	0.74	-0.67	-3.40
6,159.0	5.15	77.35	6,042.6	-190.4	1,022.5	-1,020.5	0.79	-0.73	-3.13
6,174.0	5.04	77.00	6,057.5	-190.1	1,023.8	-1,021.8	0.76	-0.73	-2.33
6,188.8	4.91	76.86	6,072.3	-189.9	1,025.1	-1,023.0	0.88	-0.88	-0.94
6,203.7	4.78	76.84	6,087.1	-189.6	1,026.3	-1,024.2	0.88	-0.88	-0.13
6,218.5	4.65	76.88	6,101.9	-189.3	1,027.5	-1,025.4	0.88	-0.88	0.27
6,233.3	4.52	76.92	6,116.6	-189.0	1,028.6	-1,026.6	0.88	-0.88	0.27
6,248.2	4.40	76.92	6,131.4	-188.8	1,029.8	-1,027.7	0.81	-0.81	0.00
6,263.0	4.29	76.81	6,146.2	-188.5	1,030.9	-1,028.8	0.74	-0.74	-0.74
6,277.8	4.19	76.47	6,161.0	-188.3	1,031.9	-1,029.9	0.70	-0.67	-2.29
6,292.7	4.11	75.97	6,175.8	-188.0	1,033.0	-1,030.9	0.59	-0.54	-3.37
6,307.5	4.03	75.34	6,190.6	-187.7	1,034.0	-1,032.0	0.62	-0.54	-4.25
6,322.3	3.96	74.59	6,205.4	-187.5	1,035.0	-1,033.0	0.59	-0.47	-5.06
6,337.2	3.89	73.70	6,220.2	-187.2	1,036.0	-1,033.9	0.63	-0.47	-6.00
6,352.0	2.27	86.74	6,235.0	-187.0	1,036.7	-1,034.7	11.83	-10.92	87.93
6,366.8	1.88	91.28	6,249.8	-187.0	1,037.3	-1,035.2	2.85	-2.63	30.61
6,381.7	1.81	89.08	6,264.7	-187.0	1,037.8	-1,035.7	0.67	-0.47	-14.82
6,396.5	1.75	86.54	6,279.5	-187.0	1,038.2	-1,036.2	0.67	-0.40	-17.13
6,411.3	1.70	83.57	6,294.3	-187.0	1,038.7	-1,036.6	0.69	-0.34	-20.03
6,426.2	1.65	80.08	6,309.2	-186.9	1,039.1	-1,037.1	0.77	-0.34	-23.52
6,441.0	0.54	350.37	6,324.0	-186.8	1,039.3	-1,037.3	11.69	-7.48	-604.92
6,455.8	0.89	312.41	6,338.8	-186.7	1,039.2	-1,037.2	3.85	2.36	-255.97
6,470.7	1.13	291.85	6,353.6	-186.5	1,039.0	-1,036.9	2.90	1.62	-138.54
6,485.5	1.46	279.51	6,368.5	-186.4	1,038.6	-1,036.6	2.90	2.23	-83.21
6,500.3	1.84	271.95	6,383.3	-186.4	1,038.2	-1,036.2	2.95	2.56	-50.98
6,515.2	2.49	274.86	6,398.1	-186.4	1,037.7	-1,035.6	4.44	4.38	19.61
6,530.0	4.60	279.57	6,412.9	-186.2	1,036.8	-1,034.7	14.35	14.23	31.76
6,544.8	7.09	282.46	6,427.7	-185.9	1,035.3	-1,033.3	16.90	16.79	19.49
6,559.7	8.46	280.84	6,442.4	-185.5	1,033.3	-1,031.3	9.35	9.23	-10.92

Company:	Bayswater Exploration & Production, LLC	Local Co-ordinate Reference:	Well Groves Farm N-34-33HN
Project:	SEC.34-T7N-R65W	TVD Reference:	WELL @ 4867.0ft (Ensign 153 RKB - 23')
Site:	Groves Farm 34-L Pad Sec.34-T7N-R65W	MD Reference:	WELL @ 4867.0ft (Ensign 153 RKB - 23')
Well:	Groves Farm N-34-33HN	North Reference:	True
Wellbore:	Groves Farm N-34-33HN Wellbore #1	Survey Calculation Method:	Minimum Curvature
Design:	Groves Farm N-34-33HN Wellbore #1	Database:	US_EDM

Survey									
Measured Depth (ft)	Inclination (°)	Azimuth (°)	Vertical Depth (ft)	+N/-S (ft)	+E/-W (ft)	Vertical Section (ft)	Dogleg Rate (°/100usft)	Build Rate (°/100usft)	Turn Rate (°/100usft)
6,574.5	8.42	277.96	6,457.1	-185.2	1,031.2	-1,029.2	2.86	-0.27	-19.42
6,589.3	8.40	274.85	6,471.7	-184.9	1,029.0	-1,027.0	3.07	-0.13	-20.97
6,604.2	8.99	273.88	6,486.4	-184.8	1,026.8	-1,024.8	4.10	3.98	-6.54
6,619.0	11.31	277.44	6,501.0	-184.5	1,024.2	-1,022.2	16.20	15.64	24.01
6,634.0	13.90	278.40	6,515.6	-184.0	1,020.9	-1,018.9	17.32	17.27	6.40
6,649.0	15.05	278.25	6,530.1	-183.5	1,017.2	-1,015.2	7.67	7.67	-1.00
6,664.0	14.88	275.89	6,544.6	-183.0	1,013.4	-1,011.4	4.22	-1.13	-15.73
6,679.0	14.73	273.51	6,559.1	-182.7	1,009.6	-1,007.6	4.18	-1.00	-15.87
6,694.0	15.24	271.14	6,573.6	-182.6	1,005.7	-1,003.7	5.31	3.40	-15.80
6,709.0	17.61	268.67	6,588.0	-182.6	1,001.4	-999.5	16.47	15.80	-16.47
6,723.8	20.17	266.62	6,602.1	-182.8	996.7	-994.7	17.83	17.26	-13.82
6,738.7	21.03	266.16	6,615.9	-183.1	991.4	-989.4	5.90	5.80	-3.10
6,753.5	20.97	265.83	6,629.8	-183.5	986.1	-984.1	0.89	-0.40	-2.23
6,768.3	20.92	265.57	6,643.6	-183.9	980.9	-978.9	0.71	-0.34	-1.75
6,783.2	21.59	265.79	6,657.5	-184.3	975.5	-973.5	4.55	4.51	1.48
6,798.0	23.78	266.40	6,671.1	-184.7	969.8	-967.8	14.85	14.77	4.11
6,813.0	26.28	266.00	6,684.7	-185.1	963.4	-961.4	16.70	16.67	-2.67
6,828.0	28.09	265.76	6,698.1	-185.6	956.6	-954.6	12.09	12.07	-1.60
6,843.0	28.15	265.40	6,711.3	-186.1	949.6	-947.5	1.20	0.40	-2.40
6,858.0	28.22	265.06	6,724.5	-186.7	942.5	-940.5	1.17	0.47	-2.27
6,873.0	28.87	265.34	6,737.7	-187.3	935.4	-933.3	4.42	4.33	1.87
6,888.0	30.96	266.10	6,750.7	-187.9	927.9	-925.9	14.16	13.93	5.07
6,903.0	33.74	265.60	6,763.4	-188.5	919.9	-917.9	18.62	18.53	-3.33
6,918.0	35.72	266.08	6,775.7	-189.1	911.4	-909.3	13.33	13.20	3.20
6,933.0	35.77	266.31	6,787.9	-189.7	902.6	-900.6	0.96	0.33	1.53
6,948.0	35.83	266.57	6,800.0	-190.2	893.9	-891.8	1.09	0.40	1.73
6,963.0	36.14	267.55	6,812.2	-190.7	885.1	-883.0	4.36	2.07	6.53
6,978.0	37.27	269.65	6,824.2	-190.9	876.1	-874.0	11.26	7.53	14.00
6,992.8	39.51	271.20	6,835.8	-190.8	866.9	-864.8	16.44	15.10	10.45
7,007.7	42.36	271.69	6,847.0	-190.5	857.2	-855.1	19.33	19.20	3.30
7,022.5	43.68	271.91	6,857.9	-190.2	847.1	-845.0	8.96	8.90	1.48
7,037.3	43.76	271.87	6,868.6	-189.9	836.8	-834.8	0.57	0.54	-0.27
7,052.2	44.77	271.96	6,879.2	-189.5	826.5	-824.4	6.82	6.81	0.61
7,067.0	47.30	272.00	6,889.5	-189.2	815.8	-813.8	17.06	17.06	0.27
7,081.8	50.04	271.85	6,899.3	-188.8	804.7	-802.6	18.49	18.48	-1.01
7,096.7	52.81	272.42	6,908.6	-188.4	793.1	-791.1	18.91	18.67	3.84
7,111.5	52.70	272.71	6,917.5	-187.8	781.3	-779.3	1.72	-0.74	1.96
7,126.3	52.57	273.02	6,926.5	-187.3	769.5	-767.5	1.88	-0.88	2.09
7,141.2	53.13	272.36	6,935.5	-186.7	757.7	-755.7	5.18	3.77	-4.45
7,156.0	55.10	271.16	6,944.2	-186.3	745.7	-743.7	14.81	13.28	-8.09
7,171.0	57.86	271.27	6,952.5	-186.1	733.2	-731.2	18.41	18.40	0.73
7,186.0	58.41	271.17	6,960.4	-185.8	720.5	-718.5	3.71	3.67	-0.67
7,201.0	58.38	271.07	6,968.3	-185.5	707.7	-705.7	0.60	-0.20	-0.67

Company:	Bayswater Exploration & Production, LLC	Local Co-ordinate Reference:	Well Groves Farm N-34-33HN
Project:	SEC.34-T7N-R65W	TVD Reference:	WELL @ 4867.0ft (Ensign 153 RKB - 23')
Site:	Groves Farm 34-L Pad Sec.34-T7N-R65W	MD Reference:	WELL @ 4867.0ft (Ensign 153 RKB - 23')
Well:	Groves Farm N-34-33HN	North Reference:	True
Wellbore:	Groves Farm N-34-33HN Wellbore #1	Survey Calculation Method:	Minimum Curvature
Design:	Groves Farm N-34-33HN Wellbore #1	Database:	US_EDM

Survey									
Measured Depth (ft)	Inclination (°)	Azimuth (°)	Vertical Depth (ft)	+N/-S (ft)	+E/-W (ft)	Vertical Section (ft)	Dogleg Rate (°/100usft)	Build Rate (°/100usft)	Turn Rate (°/100usft)
7,216.0	58.38	270.98	6,976.1	-185.3	694.9	-692.9	0.51	0.00	-0.60
7,231.0	59.46	270.49	6,983.9	-185.2	682.1	-680.1	7.72	7.20	-3.27
7,246.0	62.21	269.72	6,991.2	-185.1	669.0	-667.0	18.87	18.33	-5.13
7,260.8	65.06	269.62	6,997.8	-185.2	655.7	-653.7	19.23	19.22	-0.67
7,275.7	66.67	269.76	7,003.8	-185.3	642.1	-640.2	10.88	10.85	0.94
7,290.5	66.86	269.92	7,009.7	-185.3	628.5	-626.5	1.62	1.28	1.08
7,305.3	67.04	270.09	7,015.5	-185.3	614.9	-612.9	1.61	1.21	1.15
7,320.2	68.04	270.30	7,021.2	-185.3	601.2	-599.2	6.86	6.74	1.42
7,335.0	70.78	270.22	7,026.4	-185.2	587.3	-585.3	18.48	18.48	-0.54
7,350.0	73.59	269.89	7,031.0	-185.2	573.0	-571.0	18.85	18.73	-2.20
7,365.0	74.25	270.16	7,035.1	-185.2	558.6	-556.6	4.73	4.40	1.80
7,380.0	74.03	270.32	7,039.2	-185.1	544.2	-542.2	1.79	-1.47	1.07
7,395.0	73.79	270.47	7,043.4	-185.0	529.7	-527.8	1.87	-1.60	1.00
7,410.0	73.58	270.62	7,047.6	-184.9	515.4	-513.4	1.70	-1.40	1.00
7,425.0	74.63	270.46	7,051.7	-184.8	500.9	-498.9	7.07	7.00	-1.07
7,440.0	77.23	270.34	7,055.3	-184.7	486.4	-484.4	17.35	17.33	-0.80
7,455.0	77.47	270.42	7,058.6	-184.6	471.7	-469.8	1.68	1.60	0.53
7,470.0	77.57	270.46	7,061.9	-184.4	457.1	-455.1	0.72	0.67	0.27
7,485.0	77.68	270.50	7,065.1	-184.3	442.4	-440.5	0.78	0.73	0.27
7,495.7	78.51	270.48	7,067.3	-184.2	432.0	-430.0	7.80	7.80	-0.20
TPZ - 2450'FSL & 460'FEL, Sec.34									
7,500.0	78.85	270.47	7,068.1	-184.2	427.8	-425.8	7.80	7.80	-0.20
7,515.0	81.42	270.48	7,070.7	-184.1	413.0	-411.0	17.13	17.13	0.07
7,530.0	84.18	271.08	7,072.6	-183.9	398.1	-396.1	18.82	18.40	4.00
7,545.0	86.16	271.93	7,073.8	-183.5	383.2	-381.2	14.36	13.20	5.67
7,560.0	86.16	272.12	7,074.9	-182.9	368.2	-366.3	1.26	0.00	1.27
7,575.0	86.14	272.31	7,075.9	-182.4	353.3	-351.3	1.27	-0.13	1.27
7,590.0	86.12	272.49	7,076.9	-181.7	338.3	-336.4	1.20	-0.13	1.20
7,605.0	87.74	272.91	7,077.7	-181.0	323.3	-321.4	11.16	10.80	2.80
7,619.8	89.03	273.17	7,078.1	-180.3	308.5	-306.6	8.87	8.70	1.75
7,634.7	88.94	273.18	7,078.4	-179.4	293.7	-291.8	0.61	-0.61	0.07
7,649.5	88.84	273.16	7,078.6	-178.6	278.9	-277.0	0.69	-0.67	-0.13
7,664.3	88.74	273.11	7,079.0	-177.8	264.1	-262.2	0.75	-0.67	-0.34
7,679.2	88.63	273.06	7,079.3	-177.0	249.3	-247.4	0.81	-0.74	-0.34
7,694.0	88.53	273.00	7,079.7	-176.2	234.5	-232.6	0.79	-0.67	-0.40
7,709.0	88.44	272.93	7,080.1	-175.4	219.5	-217.7	0.76	-0.60	-0.47
7,724.0	88.35	272.87	7,080.5	-174.7	204.5	-202.7	0.72	-0.60	-0.40
7,739.0	88.28	272.81	7,080.9	-173.9	189.6	-187.7	0.61	-0.47	-0.40
7,754.0	88.22	272.75	7,081.4	-173.2	174.6	-172.8	0.57	-0.40	-0.40
7,769.0	88.17	272.69	7,081.9	-172.5	159.6	-157.8	0.52	-0.33	-0.40
7,784.0	88.15	272.65	7,082.3	-171.8	144.6	-142.8	0.30	-0.13	-0.27
7,798.8	88.17	272.64	7,082.8	-171.1	129.8	-128.0	0.15	0.13	-0.07
7,813.7	88.21	272.63	7,083.3	-170.4	115.0	-113.2	0.28	0.27	-0.07
7,828.5	88.26	272.63	7,083.7	-169.8	100.2	-98.4	0.34	0.34	0.00

Company:	Bayswater Exploration & Production, LLC	Local Co-ordinate Reference:	Well Groves Farm N-34-33HN
Project:	SEC.34-T7N-R65W	TVD Reference:	WELL @ 4867.0ft (Ensign 153 RKB - 23')
Site:	Groves Farm 34-L Pad Sec.34-T7N-R65W	MD Reference:	WELL @ 4867.0ft (Ensign 153 RKB - 23')
Well:	Groves Farm N-34-33HN	North Reference:	True
Wellbore:	Groves Farm N-34-33HN Wellbore #1	Survey Calculation Method:	Minimum Curvature
Design:	Groves Farm N-34-33HN Wellbore #1	Database:	US_EDM

Survey									
Measured Depth (ft)	Inclination (°)	Azimuth (°)	Vertical Depth (ft)	+N/-S (ft)	+E/-W (ft)	Vertical Section (ft)	Dogleg Rate (°/100usft)	Build Rate (°/100usft)	Turn Rate (°/100usft)
7,843.3	88.32	272.63	7,084.2	-169.1	85.4	-83.6	0.40	0.40	0.00
7,858.2	88.38	272.62	7,084.6	-168.4	70.6	-68.8	0.41	0.40	-0.07
7,873.0	89.89	272.14	7,084.8	-167.8	55.8	-54.0	10.68	10.18	-3.24
7,888.0	90.21	272.01	7,084.8	-167.2	40.8	-39.0	2.30	2.13	-0.87
7,903.0	90.27	271.96	7,084.8	-166.7	25.8	-24.0	0.52	0.40	-0.33
7,918.0	90.33	271.91	7,084.7	-166.2	10.8	-9.0	0.52	0.40	-0.33
7,933.0	90.38	271.85	7,084.6	-165.7	-4.2	5.9	0.52	0.33	-0.40
7,948.0	90.42	271.79	7,084.5	-165.2	-19.2	20.9	0.48	0.27	-0.40
7,963.0	90.46	271.74	7,084.4	-164.8	-34.2	35.9	0.43	0.27	-0.33
7,978.0	90.46	271.71	7,084.2	-164.3	-49.2	50.9	0.20	0.00	-0.20
7,993.0	90.46	271.68	7,084.1	-163.9	-64.2	65.9	0.20	0.00	-0.20
8,008.0	90.45	271.66	7,084.0	-163.5	-79.2	80.9	0.15	-0.07	-0.13
8,023.0	90.44	271.65	7,083.9	-163.0	-94.2	95.9	0.09	-0.07	-0.07
8,038.0	90.44	271.64	7,083.8	-162.6	-109.1	110.9	0.07	0.00	-0.07
8,053.0	90.44	271.63	7,083.7	-162.2	-124.1	125.8	0.07	0.00	-0.07
8,067.8	90.47	271.63	7,083.5	-161.7	-139.0	140.7	0.20	0.20	0.00
8,082.7	90.50	271.63	7,083.4	-161.3	-153.8	155.5	0.20	0.20	0.00
8,097.5	90.55	271.62	7,083.3	-160.9	-168.6	170.3	0.34	0.34	-0.07
8,112.3	90.59	271.62	7,083.1	-160.5	-183.4	185.1	0.27	0.27	0.00
8,127.2	90.64	271.62	7,083.0	-160.1	-198.3	200.0	0.34	0.34	0.00
8,142.0	90.68	271.62	7,082.8	-159.6	-213.1	214.8	0.27	0.27	0.00
8,157.0	90.71	271.62	7,082.6	-159.2	-228.1	229.8	0.20	0.20	0.00
8,172.0	90.74	271.62	7,082.4	-158.8	-243.1	244.7	0.20	0.20	0.00
8,187.0	90.77	271.62	7,082.2	-158.4	-258.1	259.7	0.20	0.20	0.00
8,202.0	90.79	271.60	7,082.0	-157.9	-273.1	274.7	0.19	0.13	-0.13
8,217.0	90.81	271.57	7,081.8	-157.5	-288.1	289.7	0.24	0.13	-0.20
8,232.0	90.83	271.51	7,081.6	-157.1	-303.1	304.7	0.42	0.13	-0.40
8,246.7	90.85	271.42	7,081.4	-156.7	-317.7	319.4	0.63	0.14	-0.61
8,261.3	90.88	271.31	7,081.2	-156.4	-332.4	334.0	0.78	0.20	-0.75
8,276.0	90.91	271.19	7,080.9	-156.1	-347.0	348.7	0.84	0.20	-0.82
8,290.7	90.95	271.07	7,080.7	-155.8	-361.7	363.3	0.86	0.27	-0.82
8,305.3	91.00	270.97	7,080.4	-155.5	-376.4	378.0	0.76	0.34	-0.68
8,320.0	90.53	270.58	7,080.3	-155.3	-391.0	392.6	4.16	-3.20	-2.66
8,334.8	90.14	270.26	7,080.2	-155.2	-405.9	407.5	3.40	-2.63	-2.16
8,349.7	90.31	270.25	7,080.1	-155.2	-420.7	422.3	1.15	1.15	-0.07
8,364.5	90.48	270.25	7,080.0	-155.1	-435.5	437.1	1.15	1.15	0.00
8,379.3	90.65	270.26	7,079.9	-155.0	-450.4	452.0	1.15	1.15	0.07
8,394.2	90.78	270.29	7,079.7	-155.0	-465.2	466.8	0.90	0.88	0.20
8,409.0	90.86	270.33	7,079.5	-154.9	-480.0	481.6	0.60	0.54	0.27
8,423.8	90.83	270.40	7,079.2	-154.8	-494.8	496.5	0.51	-0.20	0.47
8,438.7	90.74	270.47	7,079.0	-154.7	-509.7	511.3	0.77	-0.61	0.47
8,453.5	90.63	270.55	7,078.9	-154.5	-524.5	526.1	0.92	-0.74	0.54
8,468.3	90.52	270.61	7,078.7	-154.4	-539.3	540.9	0.84	-0.74	0.40

Company:	Bayswater Exploration & Production, LLC	Local Co-ordinate Reference:	Well Groves Farm N-34-33HN
Project:	SEC.34-T7N-R65W	TVD Reference:	WELL @ 4867.0ft (Ensign 153 RKB - 23')
Site:	Groves Farm 34-L Pad Sec.34-T7N-R65W	MD Reference:	WELL @ 4867.0ft (Ensign 153 RKB - 23')
Well:	Groves Farm N-34-33HN	North Reference:	True
Wellbore:	Groves Farm N-34-33HN Wellbore #1	Survey Calculation Method:	Minimum Curvature
Design:	Groves Farm N-34-33HN Wellbore #1	Database:	US_EDM

Survey									
Measured Depth (ft)	Inclination (°)	Azimuth (°)	Vertical Depth (ft)	+N/-S (ft)	+E/-W (ft)	Vertical Section (ft)	Dogleg Rate (°/100usft)	Build Rate (°/100usft)	Turn Rate (°/100usft)
8,483.2	90.44	270.65	7,078.6	-154.2	-554.2	555.8	0.60	-0.54	0.27
8,498.0	89.59	271.17	7,078.6	-154.0	-569.0	570.6	6.72	-5.73	3.51
8,513.0	88.65	271.74	7,078.8	-153.6	-584.0	585.6	7.33	-6.27	3.80
8,528.0	88.78	271.65	7,079.2	-153.2	-599.0	600.6	1.05	0.87	-0.60
8,543.0	88.95	271.53	7,079.4	-152.7	-614.0	615.6	1.39	1.13	-0.80
8,558.0	89.13	271.40	7,079.7	-152.4	-629.0	630.6	1.48	1.20	-0.87
8,573.0	89.29	271.28	7,079.9	-152.0	-644.0	645.5	1.33	1.07	-0.80
8,588.0	89.43	271.17	7,080.1	-151.7	-659.0	660.5	1.19	0.93	-0.73
8,602.8	89.50	271.10	7,080.2	-151.4	-673.8	675.4	0.67	0.47	-0.47
8,617.7	89.53	271.06	7,080.3	-151.1	-688.6	690.2	0.34	0.20	-0.27
8,632.5	89.55	271.03	7,080.5	-150.8	-703.5	705.0	0.24	0.13	-0.20
8,647.3	89.55	271.01	7,080.6	-150.6	-718.3	719.8	0.13	0.00	-0.13
8,662.2	89.56	270.99	7,080.7	-150.3	-733.1	734.7	0.15	0.07	-0.13
8,677.0	89.58	270.98	7,080.8	-150.1	-748.0	749.5	0.15	0.13	-0.07
8,691.8	89.64	270.96	7,080.9	-149.8	-762.8	764.3	0.43	0.40	-0.13
8,706.7	89.71	270.95	7,081.0	-149.6	-777.6	779.2	0.48	0.47	-0.07
8,721.5	89.79	270.94	7,081.0	-149.3	-792.4	794.0	0.54	0.54	-0.07
8,736.3	89.88	270.93	7,081.1	-149.1	-807.3	808.8	0.61	0.61	-0.07
8,751.2	89.97	270.91	7,081.1	-148.8	-822.1	823.6	0.62	0.61	-0.13
8,766.0	90.05	270.89	7,081.1	-148.6	-836.9	838.5	0.56	0.54	-0.13
8,780.8	90.13	270.86	7,081.1	-148.4	-851.8	853.3	0.58	0.54	-0.20
8,795.7	90.21	270.82	7,081.0	-148.2	-866.6	868.1	0.60	0.54	-0.27
8,810.5	90.28	270.78	7,081.0	-148.0	-881.4	882.9	0.54	0.47	-0.27
8,825.3	90.35	270.73	7,080.9	-147.8	-896.3	897.8	0.58	0.47	-0.34
8,840.2	90.41	270.68	7,080.8	-147.6	-911.1	912.6	0.53	0.40	-0.34
8,855.0	90.47	270.63	7,080.7	-147.4	-925.9	927.4	0.53	0.40	-0.34
8,869.8	90.50	270.57	7,080.6	-147.3	-940.8	942.3	0.45	0.20	-0.40
8,884.7	90.53	270.50	7,080.4	-147.1	-955.6	957.1	0.51	0.20	-0.47
8,899.5	90.56	270.43	7,080.3	-147.0	-970.4	971.9	0.51	0.20	-0.47
8,914.3	90.58	270.35	7,080.1	-146.9	-985.3	986.8	0.56	0.13	-0.54
8,929.2	90.61	270.27	7,080.0	-146.8	-1,000.1	1,001.6	0.58	0.20	-0.54
8,944.0	90.66	270.19	7,079.8	-146.8	-1,014.9	1,016.4	0.64	0.34	-0.54
8,958.8	90.72	270.10	7,079.6	-146.7	-1,029.8	1,031.2	0.73	0.40	-0.61
8,973.7	90.79	270.00	7,079.4	-146.7	-1,044.6	1,046.1	0.82	0.47	-0.67
8,988.5	90.86	269.91	7,079.2	-146.7	-1,059.4	1,060.9	0.77	0.47	-0.61
9,003.3	90.93	269.82	7,079.0	-146.8	-1,074.2	1,075.7	0.77	0.47	-0.61
9,018.2	90.99	269.75	7,078.8	-146.8	-1,089.1	1,090.6	0.62	0.40	-0.47
9,033.0	91.04	269.69	7,078.5	-146.9	-1,103.9	1,105.4	0.53	0.34	-0.40
9,048.0	91.06	269.67	7,078.2	-147.0	-1,118.9	1,120.4	0.19	0.13	-0.13
9,063.0	91.06	269.66	7,077.9	-147.1	-1,133.9	1,135.4	0.07	0.00	-0.07
9,078.0	91.06	269.66	7,077.7	-147.1	-1,148.9	1,150.4	0.00	0.00	0.00
9,093.0	91.06	269.65	7,077.4	-147.2	-1,163.9	1,165.4	0.07	0.00	-0.07
9,108.0	91.08	269.61	7,077.1	-147.3	-1,178.9	1,180.4	0.30	0.13	-0.27
9,123.0	90.56	271.00	7,076.9	-147.3	-1,193.9	1,195.4	9.89	-3.47	9.27

Company:	Bayswater Exploration & Production, LLC	Local Co-ordinate Reference:	Well Groves Farm N-34-33HN
Project:	SEC.34-T7N-R65W	TVD Reference:	WELL @ 4867.0ft (Ensign 153 RKB - 23')
Site:	Groves Farm 34-L Pad Sec.34-T7N-R65W	MD Reference:	WELL @ 4867.0ft (Ensign 153 RKB - 23')
Well:	Groves Farm N-34-33HN	North Reference:	True
Wellbore:	Groves Farm N-34-33HN Wellbore #1	Survey Calculation Method:	Minimum Curvature
Design:	Groves Farm N-34-33HN Wellbore #1	Database:	US_EDM

Survey									
Measured Depth (ft)	Inclination (°)	Azimuth (°)	Vertical Depth (ft)	+N/-S (ft)	+E/-W (ft)	Vertical Section (ft)	Dogleg Rate (°/100usft)	Build Rate (°/100usft)	Turn Rate (°/100usft)
9,137.8	90.28	271.83	7,076.8	-146.9	-1,208.7	1,210.2	5.91	-1.89	5.60
9,152.7	90.40	271.65	7,076.7	-146.4	-1,223.6	1,225.0	1.46	0.81	-1.21
9,167.5	90.53	271.45	7,076.6	-146.0	-1,238.4	1,239.9	1.61	0.88	-1.35
9,182.3	90.67	271.24	7,076.4	-145.7	-1,253.2	1,254.7	1.70	0.94	-1.42
9,197.2	90.81	271.03	7,076.2	-145.4	-1,268.0	1,269.5	1.70	0.94	-1.42
9,212.0	90.93	270.84	7,076.0	-145.2	-1,282.9	1,284.3	1.52	0.81	-1.28
9,226.8	91.01	270.69	7,075.7	-145.0	-1,297.7	1,299.1	1.15	0.54	-1.01
9,241.7	91.07	270.56	7,075.5	-144.8	-1,312.5	1,314.0	0.96	0.40	-0.88
9,256.5	91.12	270.45	7,075.2	-144.7	-1,327.4	1,328.8	0.81	0.34	-0.74
9,271.3	91.15	270.36	7,074.9	-144.6	-1,342.2	1,343.6	0.64	0.20	-0.61
9,286.2	91.18	270.28	7,074.6	-144.5	-1,357.0	1,358.5	0.58	0.20	-0.54
9,301.0	91.19	270.21	7,074.3	-144.4	-1,371.8	1,373.3	0.48	0.07	-0.47
9,315.8	91.19	270.16	7,074.0	-144.4	-1,386.7	1,388.1	0.34	0.00	-0.34
9,330.7	91.18	270.13	7,073.7	-144.3	-1,401.5	1,403.0	0.21	-0.07	-0.20
9,345.5	91.17	270.10	7,073.4	-144.3	-1,416.3	1,417.8	0.21	-0.07	-0.20
9,360.3	91.17	270.07	7,073.1	-144.3	-1,431.2	1,432.6	0.20	0.00	-0.20
9,375.2	91.18	270.05	7,072.8	-144.3	-1,446.0	1,447.4	0.15	0.07	-0.13
9,390.0	90.37	271.57	7,072.6	-144.0	-1,460.8	1,462.3	11.61	-5.46	10.25
9,404.8	90.03	272.13	7,072.5	-143.6	-1,475.6	1,477.1	4.42	-2.29	3.78
9,419.7	90.10	272.07	7,072.5	-143.0	-1,490.5	1,491.9	0.62	0.47	-0.40
9,434.5	90.19	272.02	7,072.5	-142.5	-1,505.3	1,506.7	0.69	0.61	-0.34
9,449.3	90.28	271.97	7,072.4	-142.0	-1,520.1	1,521.5	0.69	0.61	-0.34
9,464.2	90.37	271.93	7,072.3	-141.5	-1,534.9	1,536.4	0.66	0.61	-0.27
9,479.0	90.46	271.90	7,072.2	-141.0	-1,549.8	1,551.2	0.64	0.61	-0.20
9,493.8	90.54	271.89	7,072.1	-140.5	-1,564.6	1,566.0	0.54	0.54	-0.07
9,508.7	90.62	271.90	7,071.9	-140.0	-1,579.4	1,580.8	0.54	0.54	0.07
9,523.5	90.70	271.92	7,071.8	-139.5	-1,594.2	1,595.6	0.56	0.54	0.13
9,538.3	90.78	271.94	7,071.6	-139.0	-1,609.1	1,610.4	0.56	0.54	0.13
9,553.2	90.88	271.96	7,071.3	-138.5	-1,623.9	1,625.3	0.69	0.67	0.13
9,568.0	91.00	271.98	7,071.1	-138.0	-1,638.7	1,640.1	0.82	0.81	0.13
9,583.0	91.15	271.99	7,070.8	-137.5	-1,653.7	1,655.1	1.00	1.00	0.07
9,598.0	91.31	271.99	7,070.5	-136.9	-1,668.7	1,670.0	1.07	1.07	0.00
9,613.0	91.48	271.98	7,070.1	-136.4	-1,683.7	1,685.0	1.14	1.13	-0.07
9,628.0	91.64	271.97	7,069.7	-135.9	-1,698.7	1,700.0	1.07	1.07	-0.07
9,643.0	91.78	271.95	7,069.3	-135.4	-1,713.6	1,715.0	0.94	0.93	-0.13
9,658.0	91.88	271.91	7,068.8	-134.9	-1,728.6	1,730.0	0.72	0.67	-0.27
9,673.0	91.92	271.86	7,068.3	-134.4	-1,743.6	1,744.9	0.43	0.27	-0.33
9,688.0	91.92	271.79	7,067.8	-133.9	-1,758.6	1,759.9	0.47	0.00	-0.47
9,703.0	91.90	271.72	7,067.3	-133.5	-1,773.6	1,774.9	0.49	-0.13	-0.47
9,718.0	91.89	271.66	7,066.8	-133.0	-1,788.6	1,789.9	0.41	-0.07	-0.40
9,733.0	91.90	271.61	7,066.3	-132.6	-1,803.6	1,804.9	0.34	0.07	-0.33
9,748.0	89.87	271.81	7,066.1	-132.1	-1,818.5	1,819.8	13.60	-13.53	1.33
9,762.8	89.34	271.84	7,066.2	-131.7	-1,833.4	1,834.7	3.58	-3.57	0.20

Company:	Bayswater Exploration & Production, LLC	Local Co-ordinate Reference:	Well Groves Farm N-34-33HN
Project:	SEC.34-T7N-R65W	TVD Reference:	WELL @ 4867.0ft (Ensign 153 RKB - 23')
Site:	Groves Farm 34-L Pad Sec.34-T7N-R65W	MD Reference:	WELL @ 4867.0ft (Ensign 153 RKB - 23')
Well:	Groves Farm N-34-33HN	North Reference:	True
Wellbore:	Groves Farm N-34-33HN Wellbore #1	Survey Calculation Method:	Minimum Curvature
Design:	Groves Farm N-34-33HN Wellbore #1	Database:	US_EDM

Survey									
Measured Depth (ft)	Inclination (°)	Azimuth (°)	Vertical Depth (ft)	+N/-S (ft)	+E/-W (ft)	Vertical Section (ft)	Dogleg Rate (°/100usft)	Build Rate (°/100usft)	Turn Rate (°/100usft)
9,777.7	89.47	271.85	7,066.3	-131.2	-1,848.2	1,849.5	0.88	0.88	0.07
9,792.5	89.62	271.86	7,066.5	-130.7	-1,863.0	1,864.3	1.01	1.01	0.07
9,807.3	89.77	271.87	7,066.5	-130.2	-1,877.8	1,879.1	1.01	1.01	0.07
9,822.2	89.92	271.88	7,066.6	-129.7	-1,892.7	1,893.9	1.01	1.01	0.07
9,837.0	90.05	271.88	7,066.6	-129.3	-1,907.5	1,908.8	0.88	0.88	0.00
9,852.0	90.15	271.86	7,066.5	-128.8	-1,922.5	1,923.7	0.68	0.67	-0.13
9,867.0	90.24	271.83	7,066.5	-128.3	-1,937.5	1,938.7	0.63	0.60	-0.20
9,882.0	90.31	271.79	7,066.4	-127.8	-1,952.5	1,953.7	0.54	0.47	-0.27
9,897.0	90.38	271.75	7,066.3	-127.4	-1,967.5	1,968.7	0.54	0.47	-0.27
9,912.0	90.45	271.71	7,066.2	-126.9	-1,982.5	1,983.7	0.54	0.47	-0.27
9,927.0	89.54	271.49	7,066.2	-126.5	-1,997.5	1,998.7	6.24	-6.07	-1.47
9,941.8	89.15	271.51	7,066.4	-126.1	-2,012.3	2,013.5	2.63	-2.63	0.13
9,956.7	89.22	271.47	7,066.6	-125.7	-2,027.1	2,028.3	0.54	0.47	-0.27
9,971.5	89.30	271.42	7,066.8	-125.3	-2,041.9	2,043.1	0.64	0.54	-0.34
9,986.3	89.38	271.38	7,067.0	-125.0	-2,056.8	2,058.0	0.60	0.54	-0.27
10,001.2	89.47	271.33	7,067.1	-124.6	-2,071.6	2,072.8	0.69	0.61	-0.34
10,016.0	89.56	271.29	7,067.2	-124.3	-2,086.4	2,087.6	0.66	0.61	-0.27
10,031.0	89.67	271.24	7,067.3	-124.0	-2,101.4	2,102.6	0.81	0.73	-0.33
10,046.0	89.79	271.21	7,067.4	-123.6	-2,116.4	2,117.6	0.82	0.80	-0.20
10,061.0	89.90	271.18	7,067.5	-123.3	-2,131.4	2,132.6	0.76	0.73	-0.20
10,076.0	90.01	271.15	7,067.5	-123.0	-2,146.4	2,147.6	0.76	0.73	-0.20
10,091.0	90.10	271.13	7,067.5	-122.7	-2,161.4	2,162.6	0.61	0.60	-0.13
10,106.0	90.18	271.12	7,067.4	-122.4	-2,176.4	2,177.6	0.54	0.53	-0.07
10,121.0	90.21	271.13	7,067.4	-122.1	-2,191.4	2,192.6	0.21	0.20	0.07
10,136.0	90.23	271.15	7,067.3	-121.8	-2,206.4	2,207.6	0.19	0.13	0.13
10,151.0	90.23	271.18	7,067.2	-121.5	-2,221.4	2,222.5	0.20	0.00	0.20
10,166.0	90.23	271.21	7,067.2	-121.2	-2,236.4	2,237.5	0.20	0.00	0.20
10,181.0	90.25	271.23	7,067.1	-120.9	-2,251.4	2,252.5	0.19	0.13	0.13
10,196.0	89.46	272.10	7,067.2	-120.5	-2,266.4	2,267.5	7.83	-5.27	5.80
10,211.0	88.70	272.51	7,067.4	-119.8	-2,281.4	2,282.5	5.76	-5.07	2.73
10,226.0	88.77	272.51	7,067.7	-119.2	-2,296.3	2,297.5	0.47	0.47	0.00
10,241.0	88.85	272.50	7,068.0	-118.5	-2,311.3	2,312.4	0.54	0.53	-0.07
10,256.0	88.93	272.50	7,068.3	-117.9	-2,326.3	2,327.4	0.53	0.53	0.00
10,271.0	89.02	272.51	7,068.6	-117.2	-2,341.3	2,342.4	0.60	0.60	0.07
10,286.0	89.12	272.53	7,068.9	-116.6	-2,356.3	2,357.4	0.68	0.67	0.13
10,301.0	89.21	272.57	7,069.1	-115.9	-2,371.3	2,372.4	0.66	0.60	0.27
10,316.0	89.30	272.63	7,069.3	-115.2	-2,386.2	2,387.3	0.72	0.60	0.40
10,331.0	89.39	272.69	7,069.4	-114.5	-2,401.2	2,402.3	0.72	0.60	0.40
10,346.0	89.48	272.76	7,069.6	-113.8	-2,416.2	2,417.3	0.76	0.60	0.47
10,361.0	89.55	272.81	7,069.7	-113.1	-2,431.2	2,432.2	0.57	0.47	0.33
10,376.0	89.61	272.84	7,069.8	-112.3	-2,446.2	2,447.2	0.45	0.40	0.20
10,390.8	89.63	272.84	7,069.9	-111.6	-2,461.0	2,462.0	0.13	0.13	0.00
10,405.7	89.65	272.82	7,070.0	-110.9	-2,475.8	2,476.8	0.19	0.13	-0.13

Company:	Bayswater Exploration & Production, LLC	Local Co-ordinate Reference:	Well Groves Farm N-34-33HN
Project:	SEC.34-T7N-R65W	TVD Reference:	WELL @ 4867.0ft (Ensign 153 RKB - 23')
Site:	Groves Farm 34-L Pad Sec.34-T7N-R65W	MD Reference:	WELL @ 4867.0ft (Ensign 153 RKB - 23')
Well:	Groves Farm N-34-33HN	North Reference:	True
Wellbore:	Groves Farm N-34-33HN Wellbore #1	Survey Calculation Method:	Minimum Curvature
Design:	Groves Farm N-34-33HN Wellbore #1	Database:	US_EDM

Survey									
Measured Depth (ft)	Inclination (°)	Azimuth (°)	Vertical Depth (ft)	+N/-S (ft)	+E/-W (ft)	Vertical Section (ft)	Dogleg Rate (°/100usft)	Build Rate (°/100usft)	Turn Rate (°/100usft)
10,420.5	89.65	272.78	7,070.1	-110.2	-2,490.6	2,491.6	0.27	0.00	-0.27
10,435.3	89.65	272.74	7,070.2	-109.4	-2,505.4	2,506.4	0.27	0.00	-0.27
10,450.2	89.65	272.70	7,070.3	-108.7	-2,520.3	2,521.3	0.27	0.00	-0.27
10,465.0	89.64	272.66	7,070.4	-108.0	-2,535.1	2,536.1	0.28	-0.07	-0.27
10,480.0	89.65	272.62	7,070.5	-107.3	-2,550.0	2,551.0	0.27	0.07	-0.27
10,495.0	89.65	272.59	7,070.6	-106.7	-2,565.0	2,566.0	0.20	0.00	-0.20
10,510.0	89.66	272.57	7,070.7	-106.0	-2,580.0	2,581.0	0.15	0.07	-0.13
10,525.0	89.67	272.54	7,070.7	-105.3	-2,595.0	2,596.0	0.21	0.07	-0.20
10,540.0	89.69	272.53	7,070.8	-104.7	-2,610.0	2,610.9	0.15	0.13	-0.07
10,555.0	89.73	272.52	7,070.9	-104.0	-2,625.0	2,625.9	0.27	0.27	-0.07
10,570.0	89.78	272.53	7,071.0	-103.3	-2,640.0	2,640.9	0.34	0.33	0.07
10,585.0	89.85	272.55	7,071.0	-102.7	-2,654.9	2,655.9	0.49	0.47	0.13
10,600.0	89.92	272.57	7,071.0	-102.0	-2,669.9	2,670.9	0.49	0.47	0.13
10,615.0	89.99	272.60	7,071.1	-101.3	-2,684.9	2,685.8	0.51	0.47	0.20
10,630.0	90.05	272.63	7,071.0	-100.6	-2,699.9	2,700.8	0.45	0.40	0.20
10,645.0	90.10	272.67	7,071.0	-99.9	-2,714.9	2,715.8	0.43	0.33	0.27
10,659.8	90.13	272.71	7,071.0	-99.3	-2,729.7	2,730.6	0.34	0.20	0.27
10,674.7	90.13	272.74	7,071.0	-98.5	-2,744.5	2,745.4	0.20	0.00	0.20
10,689.5	90.13	272.78	7,070.9	-97.8	-2,759.3	2,760.2	0.27	0.00	0.27
10,704.3	90.12	272.81	7,070.9	-97.1	-2,774.1	2,775.0	0.21	-0.07	0.20
10,719.2	90.09	272.83	7,070.9	-96.4	-2,789.0	2,789.8	0.24	-0.20	0.13
10,734.0	90.04	272.83	7,070.9	-95.6	-2,803.8	2,804.6	0.34	-0.34	0.00
10,749.0	89.98	272.80	7,070.9	-94.9	-2,818.8	2,819.6	0.45	-0.40	-0.20
10,764.0	89.89	272.76	7,070.9	-94.2	-2,833.7	2,834.6	0.66	-0.60	-0.27
10,779.0	89.81	272.71	7,070.9	-93.5	-2,848.7	2,849.6	0.63	-0.53	-0.33
10,794.0	89.72	272.66	7,071.0	-92.8	-2,863.7	2,864.5	0.69	-0.60	-0.33
10,809.0	89.63	272.60	7,071.1	-92.1	-2,878.7	2,879.5	0.72	-0.60	-0.40
10,824.0	89.56	272.55	7,071.2	-91.4	-2,893.7	2,894.5	0.57	-0.47	-0.33
10,839.0	89.51	272.52	7,071.3	-90.7	-2,908.7	2,909.5	0.39	-0.33	-0.20
10,854.0	89.46	272.49	7,071.4	-90.1	-2,923.6	2,924.4	0.39	-0.33	-0.20
10,869.0	89.42	272.46	7,071.6	-89.4	-2,938.6	2,939.4	0.33	-0.27	-0.20
10,884.0	89.38	272.43	7,071.7	-88.8	-2,953.6	2,954.4	0.33	-0.27	-0.20
10,899.0	89.32	272.40	7,071.9	-88.2	-2,968.6	2,969.4	0.45	-0.40	-0.20
10,914.0	89.24	272.36	7,072.1	-87.5	-2,983.6	2,984.3	0.60	-0.53	-0.27
10,928.8	89.12	272.29	7,072.3	-86.9	-2,998.4	2,999.2	0.94	-0.81	-0.47
10,943.7	88.99	272.22	7,072.5	-86.4	-3,013.2	3,014.0	0.99	-0.88	-0.47
10,958.5	88.88	272.16	7,072.8	-85.8	-3,028.0	3,028.8	0.84	-0.74	-0.40
10,973.3	88.80	272.12	7,073.1	-85.2	-3,042.9	3,043.6	0.60	-0.54	-0.27
10,988.2	88.80	272.12	7,073.4	-84.7	-3,057.7	3,058.4	0.00	0.00	0.00
11,003.0	88.93	272.18	7,073.7	-84.1	-3,072.5	3,073.2	0.97	0.88	0.40
11,018.0	89.27	272.35	7,074.0	-83.5	-3,087.5	3,088.2	2.53	2.27	1.13
11,033.0	89.73	272.58	7,074.1	-82.9	-3,102.5	3,103.2	3.43	3.07	1.53
11,048.0	90.24	272.84	7,074.1	-82.2	-3,117.5	3,118.2	3.82	3.40	1.73
11,063.0	90.77	273.10	7,074.0	-81.4	-3,132.4	3,133.1	3.94	3.53	1.73

Company:	Bayswater Exploration & Production, LLC	Local Co-ordinate Reference:	Well Groves Farm N-34-33HN
Project:	SEC.34-T7N-R65W	TVD Reference:	WELL @ 4867.0ft (Ensign 153 RKB - 23')
Site:	Groves Farm 34-L Pad Sec.34-T7N-R65W	MD Reference:	WELL @ 4867.0ft (Ensign 153 RKB - 23')
Well:	Groves Farm N-34-33HN	North Reference:	True
Wellbore:	Groves Farm N-34-33HN Wellbore #1	Survey Calculation Method:	Minimum Curvature
Design:	Groves Farm N-34-33HN Wellbore #1	Database:	US_EDM

Survey									
Measured Depth (ft)	Inclination (°)	Azimuth (°)	Vertical Depth (ft)	+N/-S (ft)	+E/-W (ft)	Vertical Section (ft)	Dogleg Rate (°/100usft)	Build Rate (°/100usft)	Turn Rate (°/100usft)
11,078.0	91.27	273.32	7,073.7	-80.6	-3,147.4	3,148.1	3.64	3.33	1.47
11,093.0	91.68	273.49	7,073.3	-79.7	-3,162.4	3,163.0	2.96	2.73	1.13
11,107.8	92.06	273.55	7,072.8	-78.8	-3,177.2	3,177.8	2.59	2.56	0.40
11,122.7	92.20	273.54	7,072.3	-77.8	-3,192.0	3,192.6	0.95	0.94	-0.07
11,137.5	92.28	273.48	7,071.7	-76.9	-3,206.8	3,207.4	0.67	0.54	-0.40
11,152.3	92.32	273.40	7,071.1	-76.1	-3,221.6	3,222.2	0.60	0.27	-0.54
11,167.2	92.34	273.32	7,070.5	-75.2	-3,236.4	3,237.0	0.56	0.13	-0.54
11,182.0	92.36	273.25	7,069.9	-74.3	-3,251.2	3,251.8	0.49	0.13	-0.47
11,196.8	92.38	273.20	7,069.3	-73.5	-3,266.0	3,266.5	0.36	0.13	-0.34
11,211.7	92.40	273.18	7,068.6	-72.7	-3,280.8	3,281.3	0.19	0.13	-0.13
11,226.5	92.43	273.16	7,068.0	-71.9	-3,295.5	3,296.1	0.24	0.20	-0.13
11,241.3	92.44	273.14	7,067.4	-71.0	-3,310.3	3,310.9	0.15	0.07	-0.13
11,256.2	92.45	273.11	7,066.8	-70.2	-3,325.1	3,325.7	0.21	0.07	-0.20
11,271.0	92.45	273.08	7,066.1	-69.4	-3,339.9	3,340.5	0.20	0.00	-0.20
11,285.8	92.42	273.03	7,065.5	-68.6	-3,354.7	3,355.3	0.39	-0.20	-0.34
11,300.7	92.38	272.96	7,064.9	-67.9	-3,369.5	3,370.1	0.54	-0.27	-0.47
11,315.5	92.34	272.89	7,064.3	-67.1	-3,384.3	3,384.9	0.54	-0.27	-0.47
11,330.3	92.30	272.81	7,063.7	-66.4	-3,399.1	3,399.7	0.60	-0.27	-0.54
11,345.2	92.29	272.74	7,063.1	-65.7	-3,414.0	3,414.5	0.48	-0.07	-0.47
11,360.0	90.83	272.14	7,062.7	-65.0	-3,428.8	3,429.3	10.64	-9.84	-4.05
11,374.8	90.35	271.87	7,062.5	-64.5	-3,443.6	3,444.1	3.71	-3.24	-1.82
11,389.7	90.44	271.80	7,062.4	-64.0	-3,458.4	3,458.9	0.77	0.61	-0.47
11,404.5	90.56	271.71	7,062.3	-63.6	-3,473.2	3,473.7	1.01	0.81	-0.61
11,419.3	90.69	271.61	7,062.1	-63.2	-3,488.1	3,488.5	1.11	0.88	-0.67
11,434.2	90.82	271.48	7,061.9	-62.8	-3,502.9	3,503.4	1.24	0.88	-0.88
11,449.0	90.95	271.30	7,061.7	-62.4	-3,517.7	3,518.2	1.50	0.88	-1.21
11,463.8	91.08	271.04	7,061.4	-62.1	-3,532.5	3,533.0	1.96	0.88	-1.75
11,478.7	91.20	270.75	7,061.1	-61.9	-3,547.4	3,547.8	2.11	0.81	-1.95
11,493.5	91.32	270.45	7,060.8	-61.7	-3,562.2	3,562.7	2.18	0.81	-2.02
11,508.3	91.43	270.16	7,060.5	-61.6	-3,577.0	3,577.5	2.09	0.74	-1.96
11,523.2	91.52	269.92	7,060.1	-61.6	-3,591.9	3,592.3	1.73	0.61	-1.62
11,538.0	91.59	269.76	7,059.7	-61.7	-3,606.7	3,607.1	1.18	0.47	-1.08
11,553.0	91.63	269.75	7,059.2	-61.7	-3,621.7	3,622.1	0.27	0.27	-0.07
11,568.0	91.65	269.81	7,058.8	-61.8	-3,636.7	3,637.1	0.42	0.13	0.40
11,583.0	91.65	269.92	7,058.4	-61.8	-3,651.7	3,652.1	0.73	0.00	0.73
11,598.0	91.65	270.02	7,058.0	-61.8	-3,666.7	3,667.1	0.67	0.00	0.67
11,613.0	91.66	270.10	7,057.5	-61.8	-3,681.7	3,682.1	0.54	0.07	0.53
11,628.0	90.89	271.51	7,057.2	-61.6	-3,696.7	3,697.1	10.71	-5.13	9.40
11,642.7	90.58	272.03	7,057.0	-61.1	-3,711.3	3,711.8	4.13	-2.11	3.54
11,657.3	90.62	271.89	7,056.8	-60.6	-3,726.0	3,726.4	0.99	0.27	-0.95
11,672.0	90.67	271.72	7,056.7	-60.2	-3,740.6	3,741.1	1.21	0.34	-1.16
11,686.7	90.73	271.55	7,056.5	-59.8	-3,755.3	3,755.7	1.23	0.41	-1.16
11,701.3	90.79	271.39	7,056.3	-59.4	-3,769.9	3,770.4	1.17	0.41	-1.09

Company:	Bayswater Exploration & Production, LLC	Local Co-ordinate Reference:	Well Groves Farm N-34-33HN
Project:	SEC.34-T7N-R65W	TVD Reference:	WELL @ 4867.0ft (Ensign 153 RKB - 23')
Site:	Groves Farm 34-L Pad Sec.34-T7N-R65W	MD Reference:	WELL @ 4867.0ft (Ensign 153 RKB - 23')
Well:	Groves Farm N-34-33HN	North Reference:	True
Wellbore:	Groves Farm N-34-33HN Wellbore #1	Survey Calculation Method:	Minimum Curvature
Design:	Groves Farm N-34-33HN Wellbore #1	Database:	US_EDM

Survey									
Measured Depth (ft)	Inclination (°)	Azimuth (°)	Vertical Depth (ft)	+N/-S (ft)	+E/-W (ft)	Vertical Section (ft)	Dogleg Rate (°/100usft)	Build Rate (°/100usft)	Turn Rate (°/100usft)
11,716.0	90.86	271.26	7,056.1	-59.0	-3,784.6	3,785.0	1.01	0.48	-0.89
11,731.0	90.95	271.20	7,055.9	-58.7	-3,799.6	3,800.0	0.72	0.60	-0.40
11,746.0	91.05	271.18	7,055.6	-58.4	-3,814.6	3,815.0	0.68	0.67	-0.13
11,761.0	91.15	271.18	7,055.3	-58.1	-3,829.6	3,830.0	0.67	0.67	0.00
11,776.0	91.25	271.18	7,055.0	-57.8	-3,844.6	3,845.0	0.67	0.67	0.00
11,791.0	91.36	271.18	7,054.7	-57.5	-3,859.6	3,860.0	0.73	0.73	0.00
11,806.0	91.46	271.16	7,054.3	-57.2	-3,874.6	3,875.0	0.68	0.67	-0.13
11,820.8	91.56	271.09	7,053.9	-56.9	-3,889.4	3,889.8	0.82	0.67	-0.47
11,835.7	91.65	270.99	7,053.5	-56.6	-3,904.2	3,904.6	0.91	0.61	-0.67
11,850.5	91.74	270.88	7,053.0	-56.4	-3,919.0	3,919.4	0.96	0.61	-0.74
11,865.3	91.82	270.75	7,052.6	-56.2	-3,933.9	3,934.2	1.03	0.54	-0.88
11,880.2	91.89	270.61	7,052.1	-56.0	-3,948.7	3,949.1	1.05	0.47	-0.94
11,895.0	91.94	270.45	7,051.6	-55.8	-3,963.5	3,963.9	1.13	0.34	-1.08
11,908.0	91.96	270.29	7,051.2	-55.8	-3,976.5	3,976.9	1.24	0.15	-1.23
11,921.0	91.97	270.13	7,050.7	-55.7	-3,989.5	3,989.9	1.23	0.08	-1.23
11,934.0	91.96	269.98	7,050.3	-55.7	-4,002.5	4,002.9	1.16	-0.08	-1.15
11,947.0	91.95	269.85	7,049.8	-55.7	-4,015.5	4,015.9	1.00	-0.08	-1.00
11,960.0	91.93	269.76	7,049.4	-55.8	-4,028.5	4,028.8	0.71	-0.15	-0.69
11,973.0	91.13	271.11	7,049.0	-55.7	-4,041.5	4,041.8	12.07	-6.15	10.38
11,986.0	90.95	271.43	7,048.8	-55.4	-4,054.5	4,054.8	2.82	-1.38	2.46
12,001.0	90.92	271.64	7,048.6	-55.0	-4,069.5	4,069.8	1.41	-0.20	1.40
12,016.0	90.89	271.92	7,048.3	-54.5	-4,084.5	4,084.8	1.88	-0.20	1.87
12,031.0	90.85	272.23	7,048.1	-54.0	-4,099.4	4,099.8	2.08	-0.27	2.07
12,046.0	90.80	272.51	7,047.9	-53.4	-4,114.4	4,114.8	1.90	-0.33	1.87
12,061.0	90.75	272.69	7,047.7	-52.7	-4,129.4	4,129.7	1.25	-0.33	1.20
12,076.0	90.68	272.70	7,047.5	-52.0	-4,144.4	4,144.7	0.47	-0.47	0.07
12,090.8	90.60	272.40	7,047.3	-51.3	-4,159.2	4,159.5	2.09	-0.54	-2.02
12,105.7	90.52	271.94	7,047.2	-50.7	-4,174.0	4,174.3	3.15	-0.54	-3.10
12,120.5	90.43	271.38	7,047.1	-50.3	-4,188.9	4,189.2	3.82	-0.61	-3.78
12,135.3	90.36	270.79	7,047.0	-50.0	-4,203.7	4,204.0	4.01	-0.47	-3.98
12,150.2	90.29	270.22	7,046.9	-49.9	-4,218.5	4,218.8	3.87	-0.47	-3.84
12,165.0	90.25	269.73	7,046.8	-49.9	-4,233.4	4,233.6	3.32	-0.27	-3.30
12,180.0	90.25	269.41	7,046.7	-50.0	-4,248.4	4,248.6	2.13	0.00	-2.13
12,195.0	90.28	269.18	7,046.7	-50.2	-4,263.4	4,263.6	1.55	0.20	-1.53
12,210.0	90.32	269.01	7,046.6	-50.4	-4,278.3	4,278.6	1.16	0.27	-1.13
12,225.0	90.39	268.86	7,046.5	-50.7	-4,293.3	4,293.6	1.10	0.47	-1.00
12,240.0	90.46	268.72	7,046.4	-51.0	-4,308.3	4,308.6	1.04	0.47	-0.93
12,255.0	90.47	269.40	7,046.3	-51.3	-4,323.3	4,323.6	4.53	0.07	4.53
12,269.8	90.42	270.63	7,046.1	-51.3	-4,338.2	4,338.5	8.30	-0.34	8.29
12,284.7	90.57	270.35	7,046.0	-51.2	-4,353.0	4,353.3	2.14	1.01	-1.89
12,299.5	90.73	270.05	7,045.8	-51.1	-4,367.8	4,368.1	2.29	1.08	-2.02
12,314.3	90.89	269.76	7,045.6	-51.1	-4,382.7	4,383.0	2.23	1.08	-1.96
12,329.2	91.03	269.48	7,045.4	-51.2	-4,397.5	4,397.8	2.11	0.94	-1.89

Company:	Bayswater Exploration & Production, LLC	Local Co-ordinate Reference:	Well Groves Farm N-34-33HN
Project:	SEC.34-T7N-R65W	TVD Reference:	WELL @ 4867.0ft (Ensign 153 RKB - 23')
Site:	Groves Farm 34-L Pad Sec.34-T7N-R65W	MD Reference:	WELL @ 4867.0ft (Ensign 153 RKB - 23')
Well:	Groves Farm N-34-33HN	North Reference:	True
Wellbore:	Groves Farm N-34-33HN Wellbore #1	Survey Calculation Method:	Minimum Curvature
Design:	Groves Farm N-34-33HN Wellbore #1	Database:	US_EDM

Survey									
Measured Depth (ft)	Inclination (°)	Azimuth (°)	Vertical Depth (ft)	+N/-S (ft)	+E/-W (ft)	Vertical Section (ft)	Dogleg Rate (°/100usft)	Build Rate (°/100usft)	Turn Rate (°/100usft)
12,344.0	91.52	269.79	7,045.1	-51.3	-4,412.3	4,412.6	3.91	3.30	2.09
12,358.8	92.14	270.43	7,044.6	-51.3	-4,427.2	4,427.4	6.01	4.18	4.32
12,373.7	92.13	270.30	7,044.0	-51.2	-4,442.0	4,442.3	0.88	-0.07	-0.88
12,388.5	92.10	270.21	7,043.5	-51.1	-4,456.8	4,457.1	0.64	-0.20	-0.61
12,403.3	92.05	270.14	7,042.9	-51.1	-4,471.6	4,471.9	0.58	-0.34	-0.47
12,418.2	92.01	270.10	7,042.4	-51.1	-4,486.5	4,486.7	0.38	-0.27	-0.27
12,433.0	91.98	270.07	7,041.9	-51.0	-4,501.3	4,501.6	0.29	-0.20	-0.20
12,447.8	91.99	270.07	7,041.4	-51.0	-4,516.1	4,516.4	0.07	0.07	0.00
12,462.7	92.01	270.09	7,040.9	-51.0	-4,530.9	4,531.2	0.19	0.13	0.13
12,477.5	92.06	270.11	7,040.3	-51.0	-4,545.7	4,546.0	0.36	0.34	0.13
12,492.3	92.12	270.13	7,039.8	-50.9	-4,560.6	4,560.8	0.43	0.40	0.13
12,507.2	92.21	270.14	7,039.2	-50.9	-4,575.4	4,575.7	0.61	0.61	0.07
12,522.0	92.32	270.13	7,038.7	-50.9	-4,590.2	4,590.5	0.74	0.74	-0.07
12,535.0	92.47	270.09	7,038.1	-50.8	-4,603.2	4,603.5	1.19	1.15	-0.31
12,548.0	92.64	270.03	7,037.5	-50.8	-4,616.2	4,616.5	1.39	1.31	-0.46
12,561.0	92.81	269.96	7,036.9	-50.8	-4,629.2	4,629.5	1.41	1.31	-0.54
12,574.0	92.97	269.90	7,036.3	-50.8	-4,642.2	4,642.4	1.31	1.23	-0.46
12,587.0	93.12	269.84	7,035.6	-50.9	-4,655.1	4,655.4	1.24	1.15	-0.46
12,600.0	93.23	269.81	7,034.9	-50.9	-4,668.1	4,668.4	0.88	0.85	-0.23
12,613.0	93.28	269.80	7,034.1	-51.0	-4,681.1	4,681.4	0.39	0.38	-0.08
12,627.8	93.23	269.85	7,033.3	-51.0	-4,695.9	4,696.2	0.48	-0.34	0.34
12,642.7	93.12	269.93	7,032.5	-51.0	-4,710.7	4,711.0	0.92	-0.74	0.54
12,657.5	92.97	270.03	7,031.7	-51.0	-4,725.5	4,725.8	1.22	-1.01	0.67
12,672.3	92.81	270.13	7,030.9	-51.0	-4,740.3	4,740.6	1.27	-1.08	0.67
12,687.2	92.66	270.21	7,030.2	-51.0	-4,755.2	4,755.4	1.15	-1.01	0.54
12,702.0	91.11	270.12	7,029.7	-50.9	-4,770.0	4,770.3	10.47	-10.45	-0.61
12,716.8	89.42	270.65	7,029.7	-50.8	-4,784.8	4,785.1	11.94	-11.40	3.57
12,731.7	89.37	270.64	7,029.8	-50.7	-4,799.7	4,799.9	0.34	-0.34	-0.07
12,746.5	89.33	270.61	7,030.0	-50.5	-4,814.5	4,814.7	0.34	-0.27	-0.20
12,761.3	89.31	270.58	7,030.2	-50.3	-4,829.3	4,829.6	0.24	-0.13	-0.20
12,776.2	89.29	270.54	7,030.3	-50.2	-4,844.1	4,844.4	0.30	-0.13	-0.27
12,791.0	89.29	270.51	7,030.5	-50.1	-4,859.0	4,859.2	0.20	0.00	-0.20
12,806.0	89.31	270.48	7,030.7	-49.9	-4,874.0	4,874.2	0.24	0.13	-0.20
12,821.0	89.34	270.45	7,030.9	-49.8	-4,889.0	4,889.2	0.28	0.20	-0.20
12,836.0	89.38	270.42	7,031.0	-49.7	-4,904.0	4,904.2	0.33	0.27	-0.20
12,851.0	89.43	270.39	7,031.2	-49.6	-4,919.0	4,919.2	0.39	0.33	-0.20
12,866.0	89.49	270.36	7,031.3	-49.5	-4,934.0	4,934.2	0.45	0.40	-0.20
12,881.0	89.57	270.31	7,031.5	-49.4	-4,949.0	4,949.2	0.63	0.53	-0.33
12,895.8	89.68	270.25	7,031.6	-49.3	-4,963.8	4,964.0	0.84	0.74	-0.40
12,910.7	89.81	270.18	7,031.6	-49.3	-4,978.6	4,978.9	0.99	0.88	-0.47
12,925.5	89.94	270.11	7,031.7	-49.2	-4,993.5	4,993.7	1.00	0.88	-0.47
12,940.3	90.08	270.04	7,031.7	-49.2	-5,008.3	5,008.5	1.06	0.94	-0.47
12,955.2	90.22	269.98	7,031.6	-49.2	-5,023.1	5,023.4	1.03	0.94	-0.40
12,970.0	90.36	269.92	7,031.5	-49.2	-5,038.0	5,038.2	1.03	0.94	-0.40

Company:	Bayswater Exploration & Production, LLC	Local Co-ordinate Reference:	Well Groves Farm N-34-33HN
Project:	SEC.34-T7N-R65W	TVD Reference:	WELL @ 4867.0ft (Ensign 153 RKB - 23')
Site:	Groves Farm 34-L Pad Sec.34-T7N-R65W	MD Reference:	WELL @ 4867.0ft (Ensign 153 RKB - 23')
Well:	Groves Farm N-34-33HN	North Reference:	True
Wellbore:	Groves Farm N-34-33HN Wellbore #1	Survey Calculation Method:	Minimum Curvature
Design:	Groves Farm N-34-33HN Wellbore #1	Database:	US_EDM

Survey									
Measured Depth (ft)	Inclination (°)	Azimuth (°)	Vertical Depth (ft)	+N/-S (ft)	+E/-W (ft)	Vertical Section (ft)	Dogleg Rate (°/100usft)	Build Rate (°/100usft)	Turn Rate (°/100usft)
12,984.7	90.49	269.89	7,031.4	-49.3	-5,052.6	5,052.9	0.91	0.89	-0.20
12,999.3	90.62	269.87	7,031.3	-49.3	-5,067.3	5,067.5	0.90	0.89	-0.14
13,014.0	90.74	269.85	7,031.1	-49.3	-5,082.0	5,082.2	0.83	0.82	-0.14
13,028.7	90.86	269.83	7,030.9	-49.4	-5,096.6	5,096.9	0.83	0.82	-0.14
13,043.3	90.98	269.81	7,030.7	-49.4	-5,111.3	5,111.5	0.83	0.82	-0.14
13,058.0	91.09	269.77	7,030.4	-49.5	-5,126.0	5,126.2	0.80	0.75	-0.27
13,072.8	91.20	269.72	7,030.1	-49.5	-5,140.8	5,141.0	0.81	0.74	-0.34
13,087.7	91.31	269.65	7,029.8	-49.6	-5,155.6	5,155.9	0.88	0.74	-0.47
13,102.5	91.41	269.58	7,029.4	-49.7	-5,170.4	5,170.7	0.82	0.67	-0.47
13,117.3	91.50	269.51	7,029.1	-49.8	-5,185.3	5,185.5	0.77	0.61	-0.47
13,132.2	91.57	269.44	7,028.7	-50.0	-5,200.1	5,200.3	0.67	0.47	-0.47
13,147.0	91.63	269.38	7,028.3	-50.1	-5,214.9	5,215.2	0.57	0.40	-0.40
13,161.8	91.65	269.35	7,027.8	-50.3	-5,229.8	5,230.0	0.24	0.13	-0.20
13,176.7	91.65	269.32	7,027.4	-50.5	-5,244.6	5,244.8	0.20	0.00	-0.20
13,191.5	91.64	269.29	7,027.0	-50.6	-5,259.4	5,259.7	0.21	-0.07	-0.20
13,206.3	91.63	269.24	7,026.6	-50.8	-5,274.2	5,274.5	0.34	-0.07	-0.34
13,221.2	91.63	269.15	7,026.1	-51.0	-5,289.1	5,289.3	0.61	0.00	-0.61
13,236.0	91.01	269.26	7,025.8	-51.2	-5,303.9	5,304.1	4.25	-4.18	0.74
13,250.8	89.75	269.58	7,025.7	-51.4	-5,318.7	5,319.0	8.77	-8.50	2.16
13,265.7	89.82	269.26	7,025.7	-51.5	-5,333.6	5,333.8	2.21	0.47	-2.16
13,280.5	89.90	268.88	7,025.8	-51.8	-5,348.4	5,348.6	2.62	0.54	-2.56
13,295.3	89.97	268.49	7,025.8	-52.1	-5,363.2	5,363.5	2.67	0.47	-2.63
13,310.2	90.03	268.09	7,025.8	-52.6	-5,378.0	5,378.3	2.73	0.40	-2.70
13,325.0	90.05	267.71	7,025.8	-53.1	-5,392.9	5,393.1	2.57	0.13	-2.56
13,340.0	90.01	267.37	7,025.8	-53.8	-5,407.8	5,408.1	2.28	-0.27	-2.27
13,355.0	89.94	267.07	7,025.8	-54.5	-5,422.8	5,423.1	2.05	-0.47	-2.00
13,370.0	89.86	266.80	7,025.8	-55.3	-5,437.8	5,438.1	1.88	-0.53	-1.80
13,385.0	89.76	266.57	7,025.9	-56.1	-5,452.8	5,453.1	1.67	-0.67	-1.53
13,400.0	89.68	266.39	7,025.9	-57.1	-5,467.8	5,468.1	1.31	-0.53	-1.20
13,415.0	89.62	266.27	7,026.0	-58.0	-5,482.7	5,483.0	0.89	-0.40	-0.80
13,429.8	89.61	266.27	7,026.1	-59.0	-5,497.5	5,497.8	0.07	-0.07	0.00
13,444.7	89.63	266.32	7,026.2	-60.0	-5,512.3	5,512.7	0.36	0.13	0.34
13,459.5	89.66	266.40	7,026.3	-60.9	-5,527.1	5,527.5	0.58	0.20	0.54
13,474.3	89.70	266.48	7,026.4	-61.8	-5,541.9	5,542.3	0.60	0.27	0.54
13,489.2	89.73	266.66	7,026.5	-62.7	-5,556.7	5,557.1	1.23	0.20	1.21
13,504.0	89.56	268.72	7,026.6	-63.3	-5,571.6	5,571.9	13.94	-1.15	13.89
13,519.0	89.79	269.97	7,026.7	-63.5	-5,586.6	5,586.9	8.47	1.53	8.33
13,534.0	89.82	269.89	7,026.7	-63.5	-5,601.6	5,601.9	0.57	0.20	-0.53
13,549.0	89.84	269.80	7,026.7	-63.5	-5,616.6	5,616.9	0.61	0.13	-0.60
13,564.0	89.86	269.69	7,026.8	-63.6	-5,631.6	5,631.9	0.75	0.13	-0.73
13,579.0	89.87	269.57	7,026.8	-63.7	-5,646.6	5,646.9	0.80	0.07	-0.80
13,594.0	90.42	270.64	7,026.8	-63.7	-5,661.6	5,661.9	8.02	3.67	7.13
13,608.8	90.65	271.12	7,026.6	-63.4	-5,676.4	5,676.7	3.59	1.55	3.24

Company:	Bayswater Exploration & Production, LLC	Local Co-ordinate Reference:	Well Groves Farm N-34-33HN
Project:	SEC.34-T7N-R65W	TVD Reference:	WELL @ 4867.0ft (Ensign 153 RKB - 23')
Site:	Groves Farm 34-L Pad Sec.34-T7N-R65W	MD Reference:	WELL @ 4867.0ft (Ensign 153 RKB - 23')
Well:	Groves Farm N-34-33HN	North Reference:	True
Wellbore:	Groves Farm N-34-33HN Wellbore #1	Survey Calculation Method:	Minimum Curvature
Design:	Groves Farm N-34-33HN Wellbore #1	Database:	US_EDM

Survey										
Measured Depth (ft)	Inclination (°)	Azimuth (°)	Vertical Depth (ft)	+N/-S (ft)	+E/-W (ft)	Vertical Section (ft)	Dogleg Rate (°/100usft)	Build Rate (°/100usft)	Turn Rate (°/100usft)	
13,623.7	90.63	270.94	7,026.5	-63.2	-5,691.2	5,691.6	1.22	-0.13	-1.21	
13,638.5	90.61	270.74	7,026.3	-63.0	-5,706.1	5,706.4	1.36	-0.13	-1.35	
13,653.3	90.59	270.55	7,026.2	-62.8	-5,720.9	5,721.2	1.29	-0.13	-1.28	
13,668.2	90.59	270.36	7,026.0	-62.7	-5,735.7	5,736.1	1.28	0.00	-1.28	
13,683.0	90.61	270.19	7,025.9	-62.6	-5,750.5	5,750.9	1.15	0.13	-1.15	
13,697.8	90.67	270.05	7,025.7	-62.6	-5,765.4	5,765.7	1.03	0.40	-0.94	
13,712.7	90.75	269.93	7,025.5	-62.6	-5,780.2	5,780.6	0.97	0.54	-0.81	
13,727.5	90.84	269.83	7,025.3	-62.6	-5,795.0	5,795.4	0.91	0.61	-0.67	
13,742.3	90.94	269.74	7,025.1	-62.7	-5,809.9	5,810.2	0.91	0.67	-0.61	
13,757.2	91.04	269.67	7,024.8	-62.7	-5,824.7	5,825.0	0.82	0.67	-0.47	
13,772.0	91.13	269.63	7,024.5	-62.8	-5,839.5	5,839.9	0.66	0.61	-0.27	
13,786.9	91.21	269.62	7,024.2	-62.9	-5,854.5	5,854.8	0.54	0.54	-0.07	
13,801.8	91.28	269.63	7,023.9	-63.0	-5,869.4	5,869.7	0.47	0.47	0.07	
13,816.7	91.35	269.66	7,023.6	-63.1	-5,884.3	5,884.6	0.51	0.47	0.20	
13,831.7	91.41	269.69	7,023.2	-63.2	-5,899.2	5,899.5	0.45	0.40	0.20	
13,846.6	91.48	269.74	7,022.8	-63.3	-5,914.1	5,914.4	0.58	0.47	0.34	
13,861.5	91.55	269.79	7,022.4	-63.3	-5,929.0	5,929.3	0.58	0.47	0.34	
13,876.4	91.62	269.84	7,022.0	-63.4	-5,943.9	5,944.3	0.58	0.47	0.34	
13,891.3	91.70	269.89	7,021.6	-63.4	-5,958.8	5,959.2	0.63	0.54	0.34	
13,906.2	91.79	269.95	7,021.1	-63.4	-5,973.7	5,974.1	0.72	0.60	0.40	
13,921.2	91.90	270.00	7,020.7	-63.4	-5,988.7	5,989.0	0.81	0.74	0.34	
13,936.1	92.02	270.04	7,020.1	-63.4	-6,003.6	6,003.9	0.85	0.80	0.27	
13,951.0	91.20	270.44	7,019.7	-63.4	-6,018.5	6,018.8	6.11	-5.50	2.68	
13,965.8	89.50	271.47	7,019.6	-63.1	-6,033.3	6,033.6	13.40	-11.46	6.95	
13,980.7	89.68	271.58	7,019.7	-62.7	-6,048.1	6,048.5	1.42	1.21	0.74	
13,995.5	90.00	271.58	7,019.8	-62.3	-6,063.0	6,063.3	2.16	2.16	0.00	
14,010.3	90.33	271.59	7,019.7	-61.9	-6,077.8	6,078.1	2.23	2.23	0.07	
14,025.2	90.62	271.60	7,019.6	-61.5	-6,092.6	6,092.9	1.96	1.95	0.07	
14,040.0	90.84	271.64	7,019.4	-61.1	-6,107.4	6,107.7	1.51	1.48	0.27	
14,055.0	90.93	271.72	7,019.2	-60.6	-6,122.4	6,122.7	0.80	0.60	0.53	
14,070.0	90.95	271.81	7,018.9	-60.2	-6,137.4	6,137.7	0.61	0.13	0.60	
14,085.0	90.93	271.91	7,018.7	-59.7	-6,152.4	6,152.7	0.68	-0.13	0.67	
14,100.0	90.91	271.99	7,018.5	-59.2	-6,167.4	6,167.7	0.55	-0.13	0.53	
14,115.0	90.93	272.05	7,018.2	-58.7	-6,182.4	6,182.7	0.42	0.13	0.40	
14,130.0	89.61	272.49	7,018.1	-58.1	-6,197.4	6,197.6	9.28	-8.80	2.93	
14,145.0	89.41	272.56	7,018.3	-57.4	-6,212.4	6,212.6	1.41	-1.33	0.47	
14,160.0	89.64	272.47	7,018.4	-56.7	-6,227.3	6,227.6	1.65	1.53	-0.60	
14,175.0	89.88	272.36	7,018.5	-56.1	-6,242.3	6,242.6	1.76	1.60	-0.73	
14,190.0	90.13	272.25	7,018.5	-55.5	-6,257.3	6,257.6	1.82	1.67	-0.73	
14,205.0	90.34	272.13	7,018.4	-54.9	-6,272.3	6,272.5	1.61	1.40	-0.80	
14,220.0	90.48	272.03	7,018.3	-54.4	-6,287.3	6,287.5	1.15	0.93	-0.67	
14,234.8	90.50	271.96	7,018.2	-53.9	-6,302.1	6,302.3	0.49	0.13	-0.47	
14,249.7	90.45	271.91	7,018.0	-53.4	-6,316.9	6,317.2	0.48	-0.34	-0.34	

Company:	Bayswater Exploration & Production, LLC	Local Co-ordinate Reference:	Well Groves Farm N-34-33HN
Project:	SEC.34-T7N-R65W	TVD Reference:	WELL @ 4867.0ft (Ensign 153 RKB - 23')
Site:	Groves Farm 34-L Pad Sec.34-T7N-R65W	MD Reference:	WELL @ 4867.0ft (Ensign 153 RKB - 23')
Well:	Groves Farm N-34-33HN	North Reference:	True
Wellbore:	Groves Farm N-34-33HN Wellbore #1	Survey Calculation Method:	Minimum Curvature
Design:	Groves Farm N-34-33HN Wellbore #1	Database:	US_EDM

Survey									
Measured Depth (ft)	Inclination (°)	Azimuth (°)	Vertical Depth (ft)	+N/-S (ft)	+E/-W (ft)	Vertical Section (ft)	Dogleg Rate (°/100usft)	Build Rate (°/100usft)	Turn Rate (°/100usft)
14,264.5	90.38	271.87	7,017.9	-52.9	-6,331.8	6,332.0	0.54	-0.47	-0.27
14,279.3	90.31	271.84	7,017.8	-52.4	-6,346.6	6,346.8	0.51	-0.47	-0.20
14,294.2	90.29	271.83	7,017.8	-51.9	-6,361.4	6,361.6	0.15	-0.13	-0.07
14,309.0	89.06	271.54	7,017.9	-51.5	-6,376.2	6,376.4	8.52	-8.29	-1.96
14,323.8	88.47	271.39	7,018.2	-51.1	-6,391.1	6,391.3	4.10	-3.98	-1.01
14,338.7	88.71	271.42	7,018.5	-50.7	-6,405.9	6,406.1	1.63	1.62	0.20
14,353.5	89.00	271.46	7,018.8	-50.4	-6,420.7	6,420.9	1.97	1.96	0.27
14,368.3	89.30	271.50	7,019.1	-50.0	-6,435.5	6,435.7	2.04	2.02	0.27
14,383.2	89.61	271.56	7,019.2	-49.6	-6,450.4	6,450.5	2.13	2.09	0.40
14,398.0	89.90	271.63	7,019.3	-49.2	-6,465.2	6,465.4	2.01	1.96	0.47
14,413.0	90.16	271.72	7,019.3	-48.7	-6,480.2	6,480.4	1.83	1.73	0.60
14,428.0	90.38	271.83	7,019.2	-48.3	-6,495.2	6,495.3	1.64	1.47	0.73
14,443.0	90.59	271.93	7,019.1	-47.8	-6,510.2	6,510.3	1.55	1.40	0.67
14,458.0	90.76	272.01	7,018.9	-47.3	-6,525.2	6,525.3	1.25	1.13	0.53
14,473.0	90.91	272.06	7,018.7	-46.7	-6,540.2	6,540.3	1.05	1.00	0.33
14,488.0	91.02	272.07	7,018.4	-46.2	-6,555.1	6,555.3	0.74	0.73	0.07
14,502.8	91.07	271.99	7,018.1	-45.7	-6,570.0	6,570.1	0.64	0.34	-0.54
14,517.7	91.07	271.86	7,017.9	-45.2	-6,584.8	6,584.9	0.88	0.00	-0.88
14,532.5	91.06	271.72	7,017.6	-44.7	-6,599.6	6,599.7	0.95	-0.07	-0.94
14,547.3	91.03	271.57	7,017.3	-44.3	-6,614.4	6,614.5	1.03	-0.20	-1.01
14,562.2	91.00	271.45	7,017.1	-43.9	-6,629.3	6,629.4	0.83	-0.20	-0.81
14,577.0	90.24	270.54	7,016.9	-43.6	-6,644.1	6,644.2	7.99	-5.12	-6.14
14,591.8	89.60	269.72	7,016.9	-43.6	-6,658.9	6,659.0	7.01	-4.32	-5.53
14,606.7	89.57	269.75	7,017.0	-43.7	-6,673.8	6,673.9	0.29	-0.20	0.20
14,621.5	89.54	269.80	7,017.1	-43.7	-6,688.6	6,688.7	0.39	-0.20	0.34
14,636.3	89.52	269.86	7,017.3	-43.8	-6,703.4	6,703.5	0.43	-0.13	0.40
14,651.2	89.51	269.92	7,017.4	-43.8	-6,718.3	6,718.4	0.41	-0.07	0.40
14,666.0	87.85	269.20	7,017.7	-43.9	-6,733.1	6,733.2	12.20	-11.19	-4.86
14,681.0	87.77	269.17	7,018.3	-44.1	-6,748.1	6,748.2	0.57	-0.53	-0.20
14,696.0	87.86	269.20	7,018.9	-44.3	-6,763.1	6,763.2	0.63	0.60	0.20
14,711.0	87.97	269.23	7,019.4	-44.6	-6,778.1	6,778.1	0.76	0.73	0.20
14,726.0	88.08	269.26	7,019.9	-44.7	-6,793.0	6,793.1	0.76	0.73	0.20
14,741.0	88.20	269.29	7,020.4	-44.9	-6,808.0	6,808.1	0.82	0.80	0.20
14,756.0	88.32	269.32	7,020.9	-45.1	-6,823.0	6,823.1	0.82	0.80	0.20
14,771.0	88.45	269.35	7,021.3	-45.3	-6,838.0	6,838.1	0.89	0.87	0.20
14,786.0	88.58	269.38	7,021.7	-45.5	-6,853.0	6,853.1	0.89	0.87	0.20
14,801.0	88.71	269.41	7,022.0	-45.6	-6,868.0	6,868.1	0.89	0.87	0.20
14,816.0	88.83	269.43	7,022.4	-45.8	-6,883.0	6,883.1	0.81	0.80	0.13
14,831.0	88.94	269.44	7,022.7	-45.9	-6,898.0	6,898.1	0.74	0.73	0.07
14,846.0	89.03	269.43	7,022.9	-46.1	-6,913.0	6,913.1	0.60	0.60	-0.07
14,861.0	89.10	269.39	7,023.2	-46.2	-6,928.0	6,928.1	0.54	0.47	-0.27
14,876.0	89.15	269.32	7,023.4	-46.4	-6,943.0	6,943.1	0.57	0.33	-0.47
14,891.0	89.19	269.25	7,023.6	-46.6	-6,958.0	6,958.1	0.54	0.27	-0.47
14,906.0	89.24	269.18	7,023.8	-46.8	-6,973.0	6,973.1	0.57	0.33	-0.47

Company:	Bayswater Exploration & Production, LLC	Local Co-ordinate Reference:	Well Groves Farm N-34-33HN
Project:	SEC.34-T7N-R65W	TVD Reference:	WELL @ 4867.0ft (Ensign 153 RKB - 23')
Site:	Groves Farm 34-L Pad Sec.34-T7N-R65W	MD Reference:	WELL @ 4867.0ft (Ensign 153 RKB - 23')
Well:	Groves Farm N-34-33HN	North Reference:	True
Wellbore:	Groves Farm N-34-33HN Wellbore #1	Survey Calculation Method:	Minimum Curvature
Design:	Groves Farm N-34-33HN Wellbore #1	Database:	US_EDM

Survey									
Measured Depth (ft)	Inclination (°)	Azimuth (°)	Vertical Depth (ft)	+N/-S (ft)	+E/-W (ft)	Vertical Section (ft)	Dogleg Rate (°/100usft)	Build Rate (°/100usft)	Turn Rate (°/100usft)
14,921.0	89.29	269.11	7,024.0	-47.0	-6,988.0	6,988.1	0.57	0.33	-0.47
14,936.0	88.61	267.74	7,024.3	-47.4	-7,003.0	7,003.1	10.20	-4.53	-9.13
14,950.8	88.69	267.68	7,024.6	-48.0	-7,017.8	7,017.9	0.67	0.54	-0.40
14,965.7	88.77	267.64	7,025.0	-48.6	-7,032.6	7,032.7	0.60	0.54	-0.27
14,980.5	88.86	267.59	7,025.3	-49.2	-7,047.4	7,047.6	0.69	0.61	-0.34
14,995.3	88.95	267.55	7,025.6	-49.9	-7,062.2	7,062.4	0.66	0.61	-0.27
15,010.2	89.04	267.51	7,025.8	-50.5	-7,077.1	7,077.2	0.66	0.61	-0.27
15,025.0	89.12	267.48	7,026.0	-51.1	-7,091.9	7,092.0	0.58	0.54	-0.20
15,039.8	89.20	267.46	7,026.3	-51.8	-7,106.7	7,106.8	0.56	0.54	-0.13
15,054.7	89.27	267.45	7,026.5	-52.5	-7,121.5	7,121.7	0.48	0.47	-0.07
15,069.5	89.34	267.43	7,026.6	-53.1	-7,136.3	7,136.5	0.49	0.47	-0.13
15,084.3	89.41	267.40	7,026.8	-53.8	-7,151.1	7,151.3	0.51	0.47	-0.20
15,099.2	89.48	267.35	7,026.9	-54.5	-7,166.0	7,166.1	0.58	0.47	-0.34
15,114.0	89.57	267.28	7,027.1	-55.2	-7,180.8	7,181.0	0.77	0.61	-0.47
15,128.8	89.67	267.15	7,027.2	-55.9	-7,195.6	7,195.8	1.11	0.67	-0.88
15,143.7	89.78	267.00	7,027.2	-56.6	-7,210.4	7,210.6	1.25	0.74	-1.01
15,158.5	89.90	266.85	7,027.3	-57.4	-7,225.2	7,225.4	1.30	0.81	-1.01
15,173.3	90.02	266.70	7,027.3	-58.3	-7,240.0	7,240.2	1.30	0.81	-1.01
15,188.2	90.14	266.59	7,027.3	-59.1	-7,254.8	7,255.1	1.10	0.81	-0.74
15,203.0	90.25	266.54	7,027.2	-60.0	-7,269.6	7,269.9	0.81	0.74	-0.34
15,218.0	90.36	266.60	7,027.1	-60.9	-7,284.6	7,284.9	0.84	0.73	0.40
15,233.0	90.47	266.71	7,027.0	-61.8	-7,299.6	7,299.8	1.04	0.73	0.73
15,248.0	90.58	266.85	7,026.9	-62.6	-7,314.6	7,314.8	1.19	0.73	0.93
15,263.0	90.69	266.99	7,026.7	-63.5	-7,329.5	7,329.8	1.19	0.73	0.93
15,278.0	90.82	267.13	7,026.5	-64.2	-7,344.5	7,344.8	1.27	0.87	0.93
15,293.0	90.66	268.53	7,026.3	-64.8	-7,359.5	7,359.8	9.39	-1.07	9.33
15,307.8	90.78	268.82	7,026.2	-65.1	-7,374.3	7,374.6	2.12	0.81	1.96
15,322.7	90.97	268.85	7,025.9	-65.4	-7,389.2	7,389.5	1.30	1.28	0.20
15,337.5	91.16	268.87	7,025.7	-65.7	-7,404.0	7,404.3	1.29	1.28	0.13
15,352.3	91.35	268.89	7,025.3	-66.0	-7,418.8	7,419.1	1.29	1.28	0.13
15,367.2	91.50	268.91	7,025.0	-66.3	-7,433.7	7,433.9	1.02	1.01	0.13
15,382.0	91.62	268.94	7,024.6	-66.6	-7,448.5	7,448.8	0.83	0.81	0.20
15,397.0	91.65	268.99	7,024.1	-66.9	-7,463.5	7,463.8	0.39	0.20	0.33
15,412.0	91.65	269.05	7,023.7	-67.1	-7,478.5	7,478.8	0.40	0.00	0.40
15,427.0	91.62	269.12	7,023.3	-67.3	-7,493.5	7,493.7	0.51	-0.20	0.47
15,442.0	91.59	269.19	7,022.8	-67.6	-7,508.4	7,508.7	0.51	-0.20	0.47
15,457.0	91.58	269.26	7,022.4	-67.8	-7,523.4	7,523.7	0.47	-0.07	0.47
15,472.0	90.34	269.54	7,022.2	-67.9	-7,538.4	7,538.7	8.47	-8.27	1.87
15,487.0	90.31	269.60	7,022.1	-68.0	-7,553.4	7,553.7	0.45	-0.20	0.40
15,502.0	90.42	269.64	7,022.0	-68.1	-7,568.4	7,568.7	0.78	0.73	0.27
15,517.0	90.54	269.68	7,021.9	-68.2	-7,583.4	7,583.7	0.84	0.80	0.27
15,532.0	90.65	269.71	7,021.7	-68.3	-7,598.4	7,598.7	0.76	0.73	0.20
15,547.0	90.76	269.74	7,021.5	-68.4	-7,613.4	7,613.7	0.76	0.73	0.20

Company:	Bayswater Exploration & Production, LLC	Local Co-ordinate Reference:	Well Groves Farm N-34-33HN
Project:	SEC.34-T7N-R65W	TVD Reference:	WELL @ 4867.0ft (Ensign 153 RKB - 23')
Site:	Groves Farm 34-L Pad Sec.34-T7N-R65W	MD Reference:	WELL @ 4867.0ft (Ensign 153 RKB - 23')
Well:	Groves Farm N-34-33HN	North Reference:	True
Wellbore:	Groves Farm N-34-33HN Wellbore #1	Survey Calculation Method:	Minimum Curvature
Design:	Groves Farm N-34-33HN Wellbore #1	Database:	US_EDM

Survey										
Measured Depth (ft)	Inclination (°)	Azimuth (°)	Vertical Depth (ft)	+N/-S (ft)	+E/-W (ft)	Vertical Section (ft)	Dogleg Rate (°/100usft)	Build Rate (°/100usft)	Turn Rate (°/100usft)	
15,562.0	90.84	269.78	7,021.3	-68.4	-7,628.4	7,628.7	0.60	0.53	0.27	
15,576.8	90.87	269.82	7,021.1	-68.5	-7,643.3	7,643.6	0.34	0.20	0.27	
15,591.7	90.88	269.87	7,020.9	-68.5	-7,658.1	7,658.4	0.34	0.07	0.34	
15,606.5	90.88	269.91	7,020.6	-68.6	-7,672.9	7,673.2	0.27	0.00	0.27	
15,621.3	90.88	269.94	7,020.4	-68.6	-7,687.8	7,688.0	0.20	0.00	0.20	
15,636.2	90.89	269.97	7,020.2	-68.6	-7,702.6	7,702.9	0.21	0.07	0.20	
15,651.0	89.93	269.68	7,020.1	-68.6	-7,717.4	7,717.7	6.76	-6.47	-1.96	
15,665.8	89.50	269.51	7,020.2	-68.7	-7,732.2	7,732.5	3.12	-2.90	-1.15	
15,680.7	89.61	269.47	7,020.3	-68.9	-7,747.1	7,747.4	0.79	0.74	-0.27	
15,695.5	89.73	269.41	7,020.4	-69.0	-7,761.9	7,762.2	0.90	0.81	-0.40	
15,710.3	89.86	269.34	7,020.4	-69.2	-7,776.7	7,777.0	1.00	0.88	-0.47	
15,725.2	89.97	269.26	7,020.4	-69.4	-7,791.6	7,791.9	0.92	0.74	-0.54	
15,740.0	90.06	269.17	7,020.4	-69.6	-7,806.4	7,806.7	0.86	0.61	-0.61	
15,754.8	90.10	269.05	7,020.4	-69.8	-7,821.2	7,821.5	0.85	0.27	-0.81	
15,769.7	90.11	268.92	7,020.4	-70.1	-7,836.1	7,836.4	0.88	0.07	-0.88	
15,784.5	90.12	268.80	7,020.4	-70.4	-7,850.9	7,851.2	0.81	0.07	-0.81	
15,799.3	90.12	268.68	7,020.3	-70.7	-7,865.7	7,866.0	0.81	0.00	-0.81	
15,814.2	90.15	268.57	7,020.3	-71.0	-7,880.6	7,880.9	0.77	0.20	-0.74	
15,829.0	90.20	268.48	7,020.2	-71.4	-7,895.4	7,895.7	0.69	0.34	-0.61	
15,843.8	90.32	268.44	7,020.2	-71.8	-7,910.2	7,910.5	0.85	0.81	-0.27	
15,858.7	90.46	268.42	7,020.1	-72.2	-7,925.1	7,925.4	0.95	0.94	-0.13	
15,873.5	90.61	268.42	7,019.9	-72.6	-7,939.9	7,940.2	1.01	1.01	0.00	
15,888.3	90.76	268.43	7,019.8	-73.0	-7,954.7	7,955.0	1.01	1.01	0.07	
15,903.2	90.87	268.44	7,019.5	-73.5	-7,969.5	7,969.9	0.74	0.74	0.07	
15,918.0	90.93	268.47	7,019.3	-73.9	-7,984.4	7,984.7	0.45	0.40	0.20	
15,932.8	90.90	268.49	7,019.1	-74.2	-7,999.2	7,999.5	0.24	-0.20	0.13	
15,947.7	90.82	268.53	7,018.9	-74.6	-8,014.0	8,014.4	0.60	-0.54	0.27	
15,962.5	90.70	268.55	7,018.7	-75.0	-8,028.8	8,029.2	0.82	-0.81	0.13	
15,977.3	90.58	268.56	7,018.5	-75.4	-8,043.7	8,044.0	0.81	-0.81	0.07	
15,992.2	90.47	268.56	7,018.4	-75.8	-8,058.5	8,058.8	0.74	-0.74	0.00	
16,007.0	89.45	268.84	7,018.4	-76.1	-8,073.3	8,073.7	7.13	-6.88	1.89	
16,021.7	89.09	268.87	7,018.6	-76.4	-8,088.0	8,088.3	2.46	-2.45	0.20	
16,036.3	89.07	268.76	7,018.8	-76.7	-8,102.6	8,103.0	0.76	-0.14	-0.75	
16,051.0	89.07	268.64	7,019.0	-77.0	-8,117.3	8,117.7	0.82	0.00	-0.82	
16,065.7	89.07	268.51	7,019.3	-77.4	-8,132.0	8,132.3	0.89	0.00	-0.89	
16,080.3	89.10	268.39	7,019.5	-77.8	-8,146.6	8,147.0	0.84	0.20	-0.82	
16,095.0	89.14	268.28	7,019.7	-78.2	-8,161.3	8,161.7	0.80	0.27	-0.75	
16,109.8	89.21	268.18	7,019.9	-78.7	-8,176.1	8,176.5	0.82	0.47	-0.67	
16,124.7	89.29	268.11	7,020.1	-79.1	-8,190.9	8,191.3	0.72	0.54	-0.47	
16,139.5	89.38	268.04	7,020.3	-79.6	-8,205.8	8,206.1	0.77	0.61	-0.47	
16,154.3	89.47	267.99	7,020.5	-80.2	-8,220.6	8,221.0	0.69	0.61	-0.34	
16,169.2	89.56	267.96	7,020.6	-80.7	-8,235.4	8,235.8	0.64	0.61	-0.20	
16,184.0	89.64	267.95	7,020.7	-81.2	-8,250.2	8,250.6	0.54	0.54	-0.07	

Company:	Bayswater Exploration & Production, LLC	Local Co-ordinate Reference:	Well Groves Farm N-34-33HN
Project:	SEC.34-T7N-R65W	TVD Reference:	WELL @ 4867.0ft (Ensign 153 RKB - 23')
Site:	Groves Farm 34-L Pad Sec.34-T7N-R65W	MD Reference:	WELL @ 4867.0ft (Ensign 153 RKB - 23')
Well:	Groves Farm N-34-33HN	North Reference:	True
Wellbore:	Groves Farm N-34-33HN Wellbore #1	Survey Calculation Method:	Minimum Curvature
Design:	Groves Farm N-34-33HN Wellbore #1	Database:	US_EDM

Survey									
Measured Depth (ft)	Inclination (°)	Azimuth (°)	Vertical Depth (ft)	+N/-S (ft)	+E/-W (ft)	Vertical Section (ft)	Dogleg Rate (°/100usft)	Build Rate (°/100usft)	Turn Rate (°/100usft)
16,199.0	89.70	267.97	7,020.8	-81.7	-8,265.2	8,265.6	0.42	0.40	0.13
16,214.0	89.75	268.01	7,020.8	-82.3	-8,280.2	8,280.6	0.43	0.33	0.27
16,229.0	89.79	268.05	7,020.9	-82.8	-8,295.2	8,295.6	0.38	0.27	0.27
16,244.0	89.82	268.06	7,021.0	-83.3	-8,310.2	8,310.6	0.21	0.20	0.07
16,259.0	89.86	268.02	7,021.0	-83.8	-8,325.2	8,325.6	0.38	0.27	-0.27
16,274.0	89.91	267.91	7,021.0	-84.3	-8,340.2	8,340.6	0.81	0.33	-0.73
16,287.0	89.96	267.69	7,021.0	-84.8	-8,353.2	8,353.6	1.74	0.38	-1.69
16,300.0	90.01	267.41	7,021.0	-85.4	-8,366.1	8,366.6	2.19	0.38	-2.15
16,313.0	90.06	267.11	7,021.0	-86.0	-8,379.1	8,379.6	2.34	0.38	-2.31
16,326.0	90.11	266.80	7,021.0	-86.7	-8,392.1	8,392.6	2.42	0.38	-2.38
16,339.0	90.16	266.52	7,021.0	-87.5	-8,405.1	8,405.5	2.19	0.38	-2.15
16,352.0	90.18	266.45	7,020.9	-88.3	-8,418.1	8,418.5	0.56	0.15	-0.54
16,365.0	90.01	268.04	7,020.9	-88.9	-8,431.1	8,431.5	12.30	-1.31	12.23
16,380.0	90.00	268.00	7,020.9	-89.4	-8,446.0	8,446.5	0.27	-0.07	-0.27
16,395.0	89.98	268.02	7,020.9	-89.9	-8,461.0	8,461.5	0.19	-0.13	0.13
16,410.0	89.95	268.09	7,020.9	-90.4	-8,476.0	8,476.5	0.51	-0.20	0.47
16,425.0	89.91	268.17	7,021.0	-90.9	-8,491.0	8,491.5	0.60	-0.27	0.53
16,440.0	89.88	268.26	7,021.0	-91.4	-8,506.0	8,506.5	0.63	-0.20	0.60
16,455.0	89.85	268.33	7,021.0	-91.8	-8,521.0	8,521.5	0.51	-0.20	0.47
16,469.8	89.82	268.37	7,021.1	-92.3	-8,535.8	8,536.3	0.34	-0.20	0.27
16,484.7	89.80	268.39	7,021.1	-92.7	-8,550.7	8,551.2	0.19	-0.13	0.13
16,499.5	89.79	268.39	7,021.2	-93.1	-8,565.5	8,566.0	0.07	-0.07	0.00
16,514.3	89.80	268.39	7,021.2	-93.5	-8,580.3	8,580.8	0.07	0.07	0.00
16,529.2	89.83	268.37	7,021.3	-93.9	-8,595.1	8,595.7	0.24	0.20	-0.13
16,544.0	89.88	268.35	7,021.3	-94.4	-8,610.0	8,610.5	0.36	0.34	-0.13
16,558.8	89.99	268.33	7,021.3	-94.8	-8,624.8	8,625.3	0.75	0.74	-0.13
16,573.7	90.12	268.30	7,021.3	-95.2	-8,639.6	8,640.2	0.90	0.88	-0.20
16,588.5	90.26	268.27	7,021.3	-95.7	-8,654.4	8,655.0	0.97	0.94	-0.20
16,603.3	90.41	268.24	7,021.2	-96.1	-8,669.3	8,669.8	1.03	1.01	-0.20
16,618.2	90.54	268.21	7,021.0	-96.6	-8,684.1	8,684.6	0.90	0.88	-0.20
16,633.0	90.65	268.20	7,020.9	-97.0	-8,698.9	8,699.5	0.74	0.74	-0.07
16,648.0	90.71	268.20	7,020.7	-97.5	-8,713.9	8,714.5	0.40	0.40	0.00
16,663.0	90.74	268.20	7,020.5	-98.0	-8,728.9	8,729.5	0.20	0.20	0.00
16,678.0	90.76	268.21	7,020.3	-98.5	-8,743.9	8,744.5	0.15	0.13	0.07
16,693.0	90.77	268.21	7,020.1	-98.9	-8,758.9	8,759.4	0.07	0.07	0.00
16,708.0	90.80	268.21	7,019.9	-99.4	-8,773.9	8,774.4	0.20	0.20	0.00
16,723.0	90.44	268.98	7,019.8	-99.8	-8,788.9	8,789.4	5.67	-2.40	5.13
16,737.8	90.21	269.53	7,019.7	-100.0	-8,803.7	8,804.3	4.02	-1.55	3.71
16,752.7	90.30	269.45	7,019.6	-100.1	-8,818.5	8,819.1	0.81	0.61	-0.54
16,767.5	90.41	269.35	7,019.5	-100.2	-8,833.4	8,833.9	1.00	0.74	-0.67
16,782.3	90.52	269.25	7,019.4	-100.4	-8,848.2	8,848.8	1.00	0.74	-0.67
16,797.2	90.62	269.14	7,019.2	-100.6	-8,863.0	8,863.6	1.00	0.67	-0.74
16,812.0	90.68	269.04	7,019.1	-100.9	-8,877.9	8,878.4	0.79	0.40	-0.67
16,826.8	90.70	268.93	7,018.9	-101.1	-8,892.7	8,893.3	0.75	0.13	-0.74

Company:	Bayswater Exploration & Production, LLC	Local Co-ordinate Reference:	Well Groves Farm N-34-33HN
Project:	SEC.34-T7N-R65W	TVD Reference:	WELL @ 4867.0ft (Ensign 153 RKB - 23')
Site:	Groves Farm 34-L Pad Sec.34-T7N-R65W	MD Reference:	WELL @ 4867.0ft (Ensign 153 RKB - 23')
Well:	Groves Farm N-34-33HN	North Reference:	True
Wellbore:	Groves Farm N-34-33HN Wellbore #1	Survey Calculation Method:	Minimum Curvature
Design:	Groves Farm N-34-33HN Wellbore #1	Database:	US_EDM

Survey									
Measured Depth (ft)	Inclination (°)	Azimuth (°)	Vertical Depth (ft)	+N/-S (ft)	+E/-W (ft)	Vertical Section (ft)	Dogleg Rate (°/100usft)	Build Rate (°/100usft)	Turn Rate (°/100usft)
16,841.7	90.69	268.83	7,018.7	-101.4	-8,907.5	8,908.1	0.68	-0.07	-0.67
16,856.5	90.67	268.74	7,018.5	-101.7	-8,922.4	8,922.9	0.62	-0.13	-0.61
16,871.3	90.65	268.67	7,018.4	-102.1	-8,937.2	8,937.8	0.49	-0.13	-0.47
16,886.2	90.65	268.61	7,018.2	-102.4	-8,952.0	8,952.6	0.40	0.00	-0.40
16,901.0	89.43	269.11	7,018.2	-102.7	-8,966.8	8,967.4	8.89	-8.23	3.37
16,916.0	89.49	269.12	7,018.3	-103.0	-8,981.8	8,982.4	0.41	0.40	0.07
16,931.0	89.57	269.16	7,018.5	-103.2	-8,996.8	8,997.4	0.60	0.53	0.27
16,946.0	89.66	269.20	7,018.6	-103.4	-9,011.8	9,012.4	0.66	0.60	0.27
16,961.0	89.75	269.25	7,018.6	-103.6	-9,026.8	9,027.4	0.69	0.60	0.33
16,976.0	89.85	269.28	7,018.7	-103.8	-9,041.8	9,042.4	0.70	0.67	0.20
16,991.0	89.95	269.30	7,018.7	-104.0	-9,056.8	9,057.4	0.68	0.67	0.13
17,005.8	90.04	269.28	7,018.7	-104.2	-9,071.7	9,072.3	0.62	0.61	-0.13
17,020.7	90.13	269.25	7,018.7	-104.3	-9,086.5	9,087.1	0.64	0.61	-0.20
17,035.5	90.22	269.20	7,018.6	-104.5	-9,101.3	9,101.9	0.69	0.61	-0.34
17,050.3	90.30	269.14	7,018.6	-104.8	-9,116.2	9,116.8	0.67	0.54	-0.40
17,065.2	90.38	269.09	7,018.5	-105.0	-9,131.0	9,131.6	0.64	0.54	-0.34
17,080.0	90.45	269.04	7,018.4	-105.2	-9,145.8	9,146.4	0.58	0.47	-0.34
17,093.2	90.50	269.00	7,018.3	-105.5	-9,159.1	9,159.7	0.48	0.38	-0.30
17,106.5	90.55	268.98	7,018.2	-105.7	-9,172.3	9,172.9	0.41	0.38	-0.15
17,119.7	90.59	268.95	7,018.0	-105.9	-9,185.5	9,186.1	0.38	0.30	-0.23
17,132.9	90.63	268.93	7,017.9	-106.2	-9,198.7	9,199.3	0.34	0.30	-0.15
17,146.1	90.67	268.91	7,017.7	-106.4	-9,212.0	9,212.6	0.34	0.30	-0.15
17,148.0	90.67	268.91	7,017.7	-106.5	-9,213.8	9,214.4	0.00	0.00	0.00

Design Targets									
Target Name	Dip Angle (°)	Dip Dir. (°)	TVD (ft)	+N/-S (ft)	+E/-W (ft)	Northing (usft)	Easting (usft)	Latitude	Longitude
SHL 2621'FSL & 892'FE - hit/miss target - Shape - Point	0.00	0.00	1.0	0.0	0.0	1,437,170.88	3,238,241.57	40.530274	-104.642926
BHL 2251'FSL & 470'FM - survey misses target center by 26.0ft at 17148.0ft MD (7017.7 TVD, -106.5 N, -9213.8 E) - Point	0.00	0.00	7,042.0	-97.4	-9,215.5	1,436,984.45	3,229,027.75	40.530002	-104.676077

Survey Annotations				
Measured Depth (ft)	Vertical Depth (ft)	Local Coordinates		Comment
		+N/-S (ft)	+E/-W (ft)	
7,495.7	7,067.3	-184.2	432.0	TPZ - 2450'FSL & 460'FEL, Sec.34

Checked By: _____ Approved By: _____ Date: _____