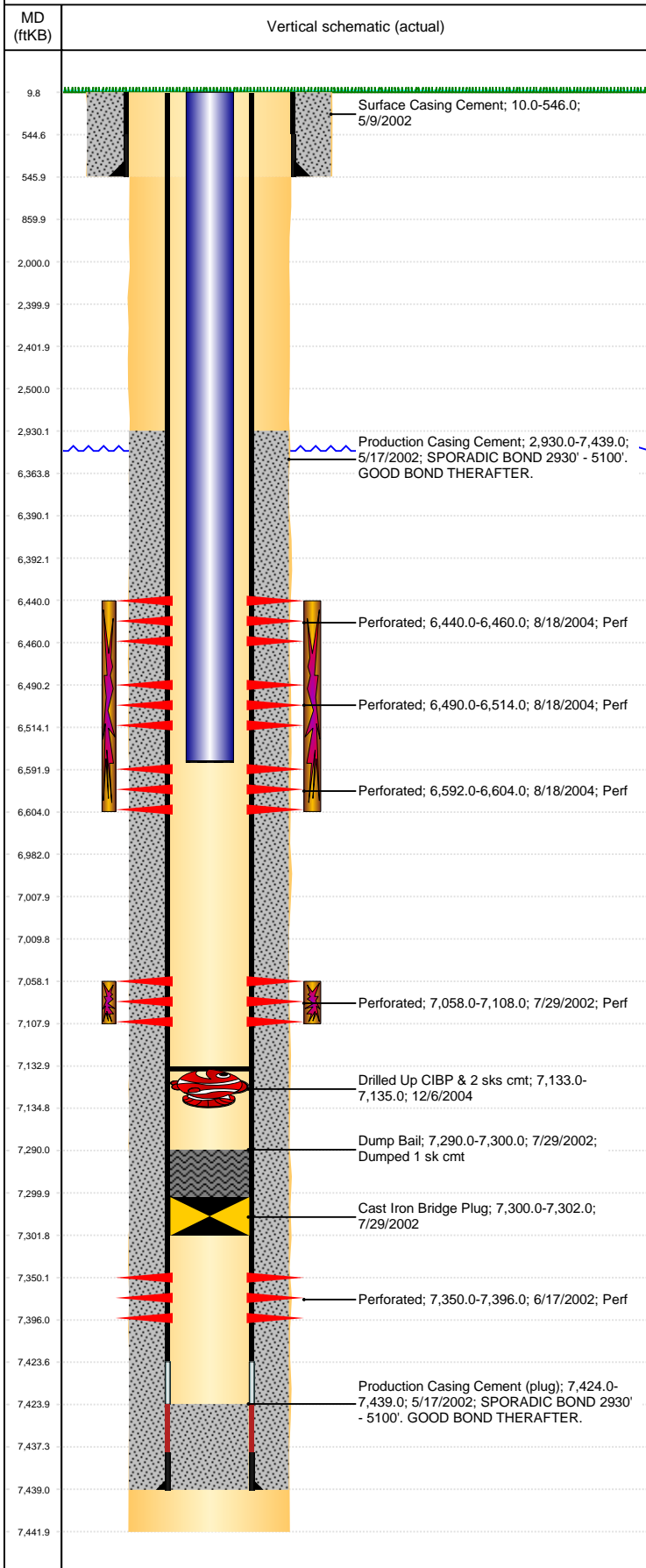


Well Name: CURD 12-05

VERTICAL, ORIGINAL HOLE, 1/13/2021 2:35:08 PM



Well Header									
API 05-123-20906		Business Unit DJ BASIN			District 15		Well Config VERTICAL		
KB - GL / MSL (ft... 10.00		Spud Date 5/8/2002		P & A Date		Well Production Status PR			SoRT No
Comment 12/6/04 - CIBP & DUMP BAIL DRILLED OUT & PUSHED TO 7133'									
Surface Location (Congressional)									
Qtr 3 SW	Qtr 4 NW	Section 5	Twنشp 4	Twنش... N	Range 63	Rng E/... W	Actual Latitude (°) 40.34540091	Actual Longitude (°) -104.46888430	
Wellbore Sections									
Section Des			Size (in)			Act Top, MD (ftKB)		Act Btm, MD (ftKB)	
SURFACE			12 1/4			10		546	
PRODUCTION			7 7/8			546		7,442	
Casing Strings									
Csg Des		Run Date		OD (in)	Wt/Len (lb/ft)	Grade	Top, MD (ftKB)	MD (ftKB)	
Surface		5/9/2002		8 5/8	24.00		10.0	546.0	
Production		5/17/2002		4 1/2	11.60		10.0	7,439.0	
Cement									
Des					Start Date		Top (ftKB)	Btm (ftKB)	
Surface Casing Cement					5/9/2002		10.0	546.0	
Production Casing Cement					5/17/2002		2,930.0	7,439.0	
Dump Bail					7/29/2002		7,290.0	7,300.0	
Zone Statuses									
Zone Name		Status Date	Status	Fluid Type	Job			Prod Method	
CODELL		8/24/2004	PR	Oil	RECOMPLETION, 8/16/2004 00:00			Flowing	
J SAND		6/6/2005	PR						
J SAND		1/28/2010	PR	Water	RECOMPLETION, 8/16/2004 00:00			Flowing	
NIOBRARA		8/24/2004	PR						
DAKOTA		6/6/2005	PR	Oil				Flowing	
DAKOTA		1/28/2010	PR	Water					
NIOBRARA-CO...		6/6/2005	PR	Oil				Flowing	
NIOBRARA-CO...		1/28/2010	PR	Water					
Perforation Data									
Linked Zone		Bnch/Stg	Entered Shot Total	Top (ftKB)		Btm (ftKB)		Date	
NIOBRARA, ORIGINAL HOLE		B	80	6,440.00		6,460.00		8/18/2004	
NIOBRARA, ORIGINAL HOLE		C	96	6,490.00		6,514.00		8/18/2004	
CODELL, ORIGINAL HOLE			48	6,592.00		6,604.00		8/18/2004	
J SAND, ORIGINAL HOLE			40	7,058.00		7,108.00		7/29/2002	
DAKOTA, ORIGINAL HOLE			24	7,350.00		7,396.00		6/17/2002	
Stimulation Intervals									
Zone				Start Date		Top (ftKB)		Btm (ftKB)	
NIOBRARA-CODELL, ORIGINAL HOLE				8/19/2004		6,440.0		6,604.0	
J SAND, ORIGINAL HOLE				7/31/2002		7,058.0		7,108.0	
Other In Hole									
Run Date		Des			Make		OD (in)	Top (ftKB)	Btm (ftKB)
7/29/2002		Cast Iron Bridge Plug					4	7,300.0	7,302.0
12/6/2004		Drilled Up CIBP & 2 sks cmt					3.99	7,133.0	7,135.0
Logs									
Date		Type				Top, MD (ftKB)		Btm, MD (ftKB)	
5/17/2002		COMPENSATED DENSITY				546.0		7,442.0	
5/24/2002		CBL/CCL/GR				2,738.0		7,380.0	
Plug Back Total Depths									
Date		Type		Com					Depth (ftKB)
5/12/2003		FILL		WIRELINE TAGGED SAND AT 7174'					7,174.0
12/6/2004		PLUG REMNANTS		PLUG REMNANTS					7,133.0