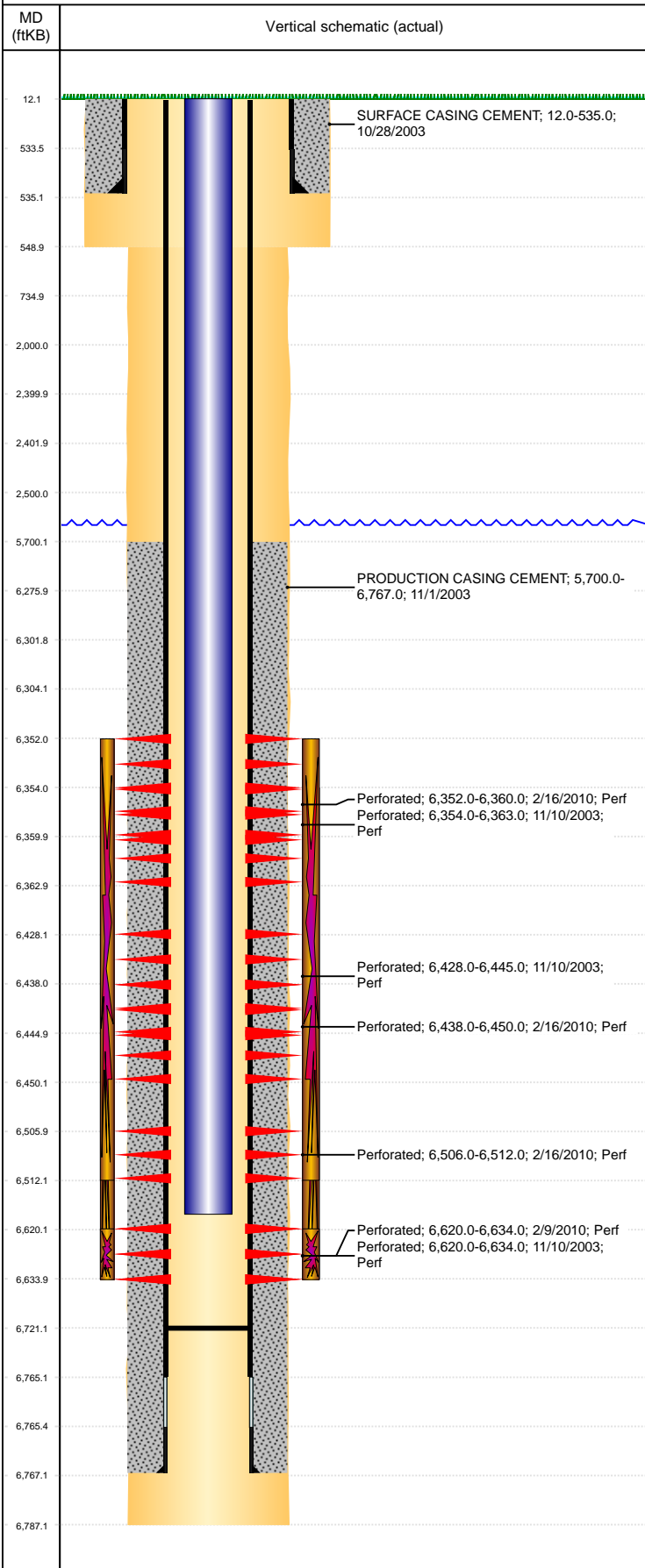


Well Name: DANKS 3-6

VERTICAL, ORIGINAL HOLE, 1/13/2021 11:14:49 AM



Well Header									
API 05-123-21717		Business Unit DJ BASIN			District 15		Well Config VERTICAL		
KB - GL / MSL (ft... 12.00		Spud Date 10/28/2003		P & A Date		Well Production Status PR			SoRT No
Comment									
Surface Location (Congressional)									
Qtr 3 NE	Qtr 4 NW	Section 6	Twonshp 4	Twonsh... N	Range 63	Rng E/... W	Actual Latitude (°) 40.34688510	Actual Longitude (°) -104.48143730	
Wellbore Sections									
Section Des			Size (in)			Act Top, MD (ftKB)		Act Btm, MD (ftKB)	
SURFACE			12 1/4			12		549	
PRODUCTION			7 7/8			549		6,787	
Casing Strings									
Csg Des			Run Date		OD (in)	Wt/Len (lb/ft)	Grade	Top, MD (ftKB)	MD (ftKB)
Surface			10/28/2003		8 5/8	24.00	J-55	12.0	535.0
Production			10/31/2003		4 1/2	11.60	I-80	12.0	6,767.0
Cement									
Des					Start Date		Top (ftKB)		Btm (ftKB)
SURFACE CASING CEMENT					10/28/2003		12.0		535.0
PRODUCTION CASING CEMENT					11/1/2003		5,700.0		6,767.0
Zone Statuses									
Zone Name	Status Date	Status	Fluid Type	Job				Prod Method	
NIOBRARA	3/11/2014	PR	Water	RE-FRAC, 2/8/2010 00:00				Flowing	
NIOBRARA	4/20/2017	PR							
CODELL	3/3/2010	PR							
CODELL	3/11/2014	PR	Water					Flowing	
Perforation Data									
Linked Zone		Bnch/Stg	Entered Shot Total	Top (ftKB)		Btm (ftKB)		Date	
NIOBRARA, ORIGINAL HOLE		A	28	6,352.00		6,360.00		2/16/2010	
NIOBRARA, ORIGINAL HOLE		A		6,354.00		6,363.00		11/10/2003	
NIOBRARA, ORIGINAL HOLE		B		6,428.00		6,445.00		11/10/2003	
NIOBRARA, ORIGINAL HOLE		B		6,438.00		6,450.00		2/16/2010	
NIOBRARA, ORIGINAL HOLE		C		6,506.00		6,512.00		2/16/2010	
CODELL, ORIGINAL HOLE				6,620.00		6,634.00		11/10/2003	
CODELL, ORIGINAL HOLE				6,620.00		6,634.00		2/9/2010	
Stimulation Intervals									
Zone				Start Date		Top (ftKB)		Btm (ftKB)	
NIOBRARA, ORIGINAL HOLE				2/16/2010		6,352.0		6,512.0	
NIOBRARA-CODELL, ORIGINAL HOLE				11/11/2003		6,354.0		6,634.0	
CODELL, ORIGINAL HOLE				2/16/2010		6,620.0		6,634.0	
Other In Hole									
Run Date		Des			Make		OD (in)	Top (ftKB)	Btm (ftKB)
Logs									
Date		Type				Top, MD (ftKB)		Btm, MD (ftKB)	
11/10/2003		CBL/CCL/GR				5,500.0		6,715.0	
Plug Back Total Depths									
Date		Type		Com				Depth (ftKB)	
11/10/2003		FILL		DEPTH LOGGER				6,721.0	