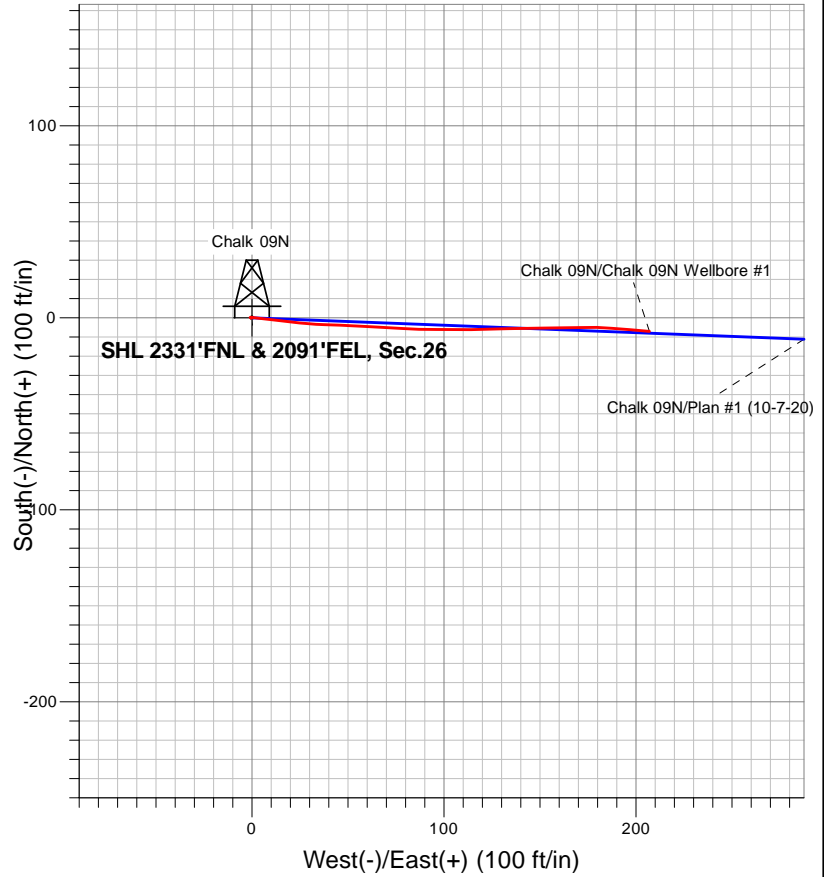


## PDC Energy Inc. DJ Basin

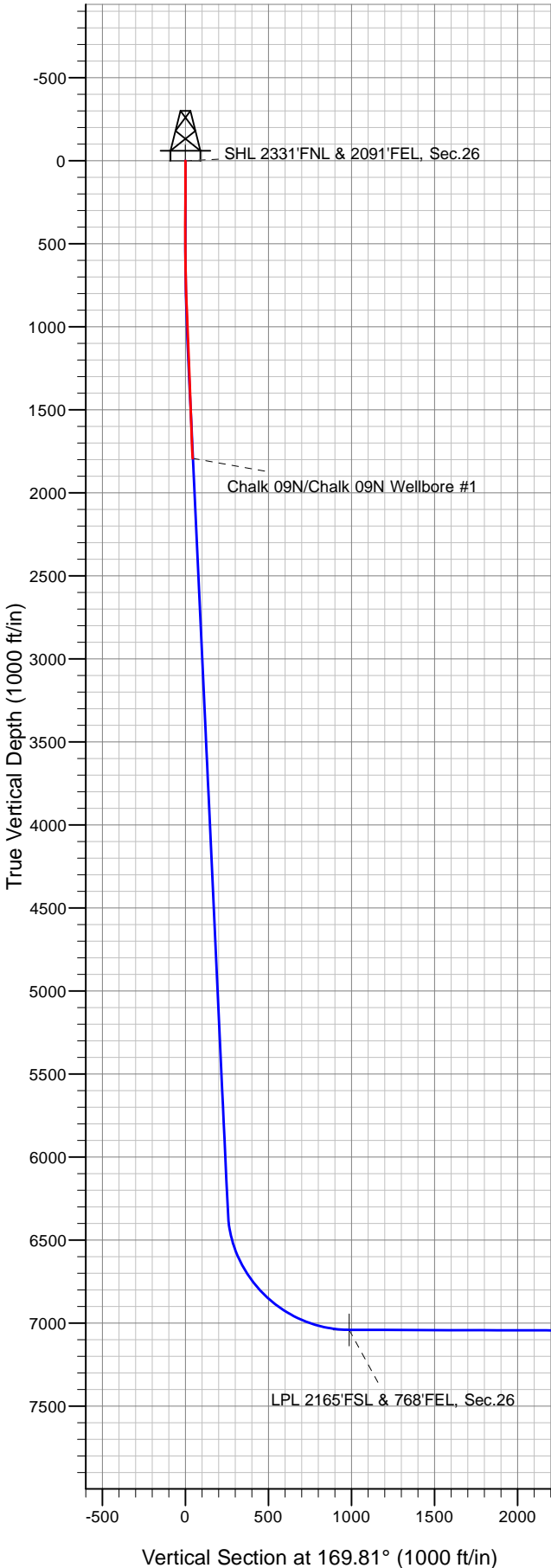


### LEGEND

- Chalk 09N, Chalk 09N Wellbore #1, Plan #1 (10-7-20) V0
- Chalk 09N Wellbore #1

## Final Survey Plot

Project: SEC.26-T6N-R66W  
 Site: Chalk 6N66W26 Pad Sec.26-T6N-R66W  
 Well: Chalk 09N  
 Plan: Chalk 09N Wellbore #1





## **PDC Energy Inc. DJ Basin**

**SEC.26-T6N-R66W**

**Chalk 6N66W26 Pad Sec.26-T6N-R66W**

**Chalk 09N**

**Chalk 09N Wellbore #1**

**Design: Chalk 09N Wellbore #1**

## **Standard Survey Report**

**05 January, 2021**

<b>Company:</b>	PDC Energy Inc. DJ Basin	<b>Local Co-ordinate Reference:</b>	Well Chalk 09N
<b>Project:</b>	SEC.26-T6N-R66W	<b>TVD Reference:</b>	WELL @ 4709.0ft (Ensign 122 RKB - 13')
<b>Site:</b>	Chalk 6N66W26 Pad Sec.26-T6N-R66W	<b>MD Reference:</b>	WELL @ 4709.0ft (Ensign 122 RKB - 13')
<b>Well:</b>	Chalk 09N	<b>North Reference:</b>	True
<b>Wellbore:</b>	Chalk 09N Wellbore #1	<b>Survey Calculation Method:</b>	Minimum Curvature
<b>Design:</b>	Chalk 09N Wellbore #1	<b>Database:</b>	US_EDM

<b>Project</b>	SEC.26-T6N-R66W, Weld County, CO		
<b>Map System:</b>	US State Plane 1983	<b>System Datum:</b>	Mean Sea Level
<b>Geo Datum:</b>	North American Datum 1983		Using Well Reference Point
<b>Map Zone:</b>	Colorado Northern Zone		Using geodetic scale factor

Site		Chalk 6N66W26 Pad Sec.26-T6N-R66W			
Site Position:		Northing:	1,411,386.54 usft	Latitude:	40.460184
From:	Lat/Long	Easting:	3,210,881.08 usft	Longitude:	-104.742143
Position Uncertainty:	0.0 ft	Slot Radius:	13-3/16 "	Grid Convergence:	0.49 °

Well	Chalk 09N					
Well Position	+N/-S	0.0 ft	Northing:	1,411,386.74 usft	Latitude:	40.460186
	+E/-W	0.0 ft	Easting:	3,210,820.97 usft	Longitude:	-104.742359
Position Uncertainty		0.0 ft	Wellhead Elevation:	0.0 ft	Ground Level:	4,696.0 ft

<b>Wellbore</b>	Chalk 09N Wellbore #1				
<b>Magnetics</b>	<b>Model Name</b>	<b>Sample Date</b>	<b>Declination (°)</b>	<b>Dip Angle (°)</b>	<b>Field Strength (nT)</b>
	HDGM	10/07/2020	7.93	66.80	52,092

<b>Design</b>	Chalk 09N Wellbore #1				
<b>Audit Notes:</b>					
<b>Version:</b>	1.0	<b>Phase:</b>	ACTUAL	<b>Tie On Depth:</b>	0.0
<b>Vertical Section:</b>	<b>Depth From (TVD) (ft)</b>	<b>+N/-S (ft)</b>	<b>+E/-W (ft)</b>	<b>Direction (°)</b>	
	0.0	0.0	0.0	169.81	

<b>Survey Program</b>	<b>Date</b>	01/05/2021			
<b>From (ft)</b>	<b>To (ft)</b>	<b>Survey (Wellbore)</b>	<b>Tool Name</b>	<b>Description</b>	
146.0	1,811.0	Survey #1 (Chalk 09N Wellbore #1)	MWD	MWD - Standard	

<b>Survey</b>										
<b>Measured Depth (ft)</b>	<b>Inclination (°)</b>	<b>Azimuth (°)</b>	<b>Vertical Depth (ft)</b>	<b>+N/-S (ft)</b>	<b>+E/-W (ft)</b>	<b>Vertical Section (ft)</b>	<b>Dogleg Rate (°/100usft)</b>	<b>Build Rate (°/100usft)</b>	<b>Turn Rate (°/100usft)</b>	
0.0	0.00	0.00	0.0	0.0	0.0	0.0	0.00	0.00	0.00	
146.0	0.18	223.61	146.0	-0.2	-0.2	0.1	0.12	0.12	0.00	
236.0	0.26	312.21	236.0	-0.1	-0.4	0.1	0.35	0.09	98.44	
360.0	0.09	267.21	360.0	0.1	-0.7	-0.2	0.17	-0.14	-36.29	
449.0	0.26	296.74	449.0	0.1	-1.0	-0.3	0.21	0.19	33.18	
539.0	0.97	89.14	539.0	0.2	-0.4	-0.3	1.34	0.79	169.33	
629.0	3.25	98.28	628.9	-0.1	2.9	0.6	2.55	2.53	10.16	
718.0	4.92	95.82	717.7	-0.9	9.2	2.5	1.89	1.88	-2.76	
807.0	7.21	97.40	806.2	-2.0	18.5	5.2	2.58	2.57	1.78	
896.0	8.79	93.89	894.3	-3.1	30.9	8.6	1.86	1.78	-3.94	

<b>Company:</b>	PDC Energy Inc. DJ Basin	<b>Local Co-ordinate Reference:</b>	Well Chalk 09N
<b>Project:</b>	SEC.26-T6N-R66W	<b>TVD Reference:</b>	WELL @ 4709.0ft (Ensign 122 RKB - 13')
<b>Site:</b>	Chalk 6N66W26 Pad Sec.26-T6N-R66W	<b>MD Reference:</b>	WELL @ 4709.0ft (Ensign 122 RKB - 13')
<b>Well:</b>	Chalk 09N	<b>North Reference:</b>	True
<b>Wellbore:</b>	Chalk 09N Wellbore #1	<b>Survey Calculation Method:</b>	Minimum Curvature
<b>Design:</b>	Chalk 09N Wellbore #1	<b>Database:</b>	US_EDM

Survey										
Measured Depth (ft)	Inclination (°)	Azimuth (°)	Vertical Depth (ft)	+N/-S (ft)	+E/-W (ft)	Vertical Section (ft)	Dogleg Rate (°/100usft)	Build Rate (°/100usft)	Turn Rate (°/100usft)	
985.0	10.38	91.78	982.1	-3.9	45.7	11.9	1.83	1.79	-2.37	
1,075.0	10.82	93.71	1,070.5	-4.7	62.2	15.6	0.63	0.49	2.14	
1,164.0	10.46	92.83	1,158.0	-5.6	78.6	19.4	0.44	-0.40	-0.99	
1,254.0	11.70	90.55	1,246.3	-6.1	95.9	23.0	1.46	1.38	-2.53	
1,343.0	12.05	89.84	1,333.4	-6.1	114.2	26.3	0.43	0.39	-0.80	
1,432.0	12.66	87.38	1,420.4	-5.7	133.2	29.2	0.91	0.69	-2.76	
1,522.0	12.66	90.55	1,508.2	-5.3	152.9	32.3	0.77	0.00	3.52	
1,611.0	11.08	87.73	1,595.3	-5.1	171.2	35.3	1.89	-1.78	-3.17	
1,700.0	10.29	94.94	1,682.7	-5.4	187.7	38.6	1.74	-0.89	8.10	
1,751.0	10.02	94.59	1,732.9	-6.2	196.7	40.9	0.54	-0.53	-0.69	
1,811.0	10.02	94.59	1,792.0	-7.0	207.1	43.5	0.00	0.00	0.00	

Checked By: _____	Approved By: _____	Date: _____
-------------------	--------------------	-------------