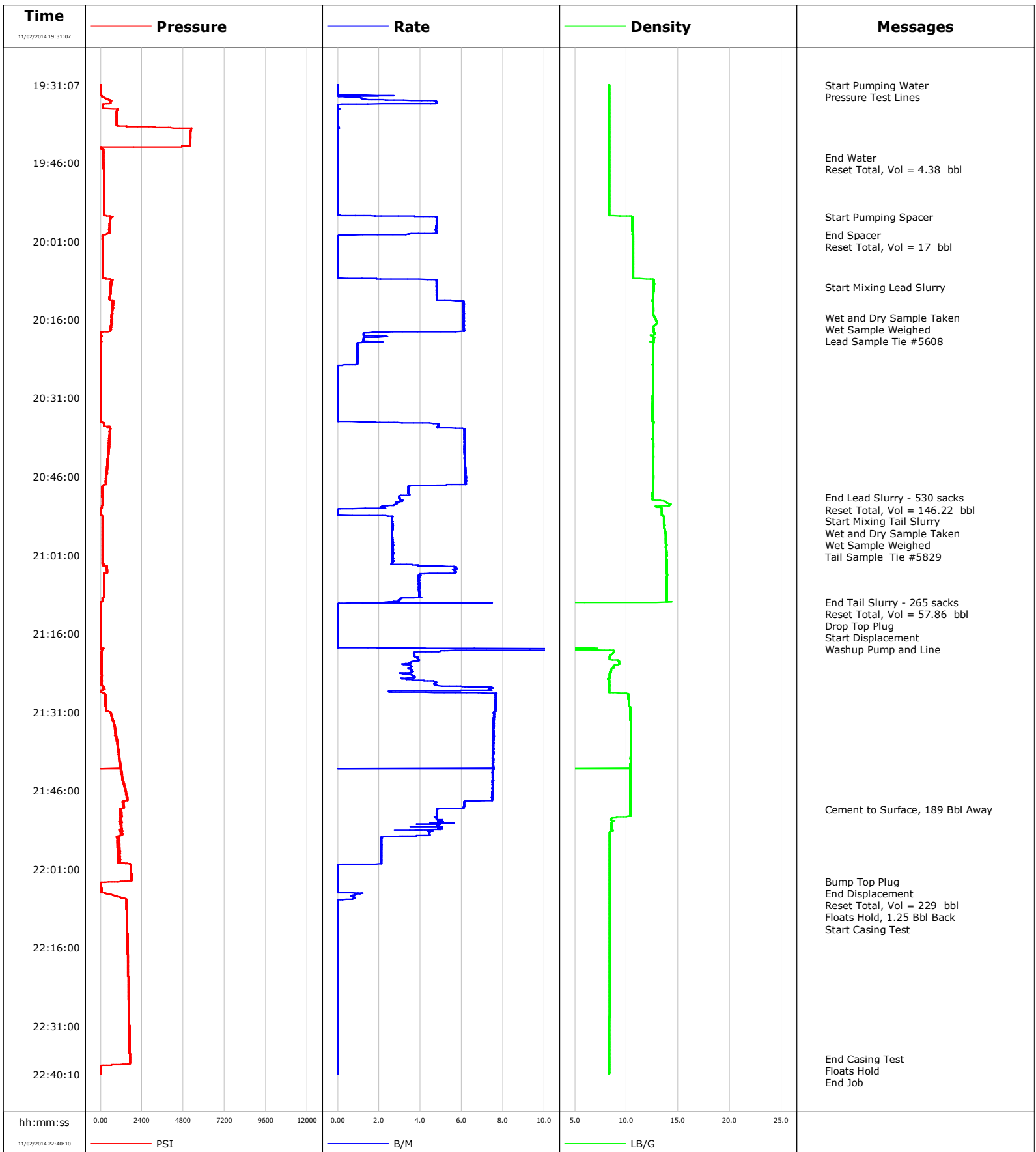


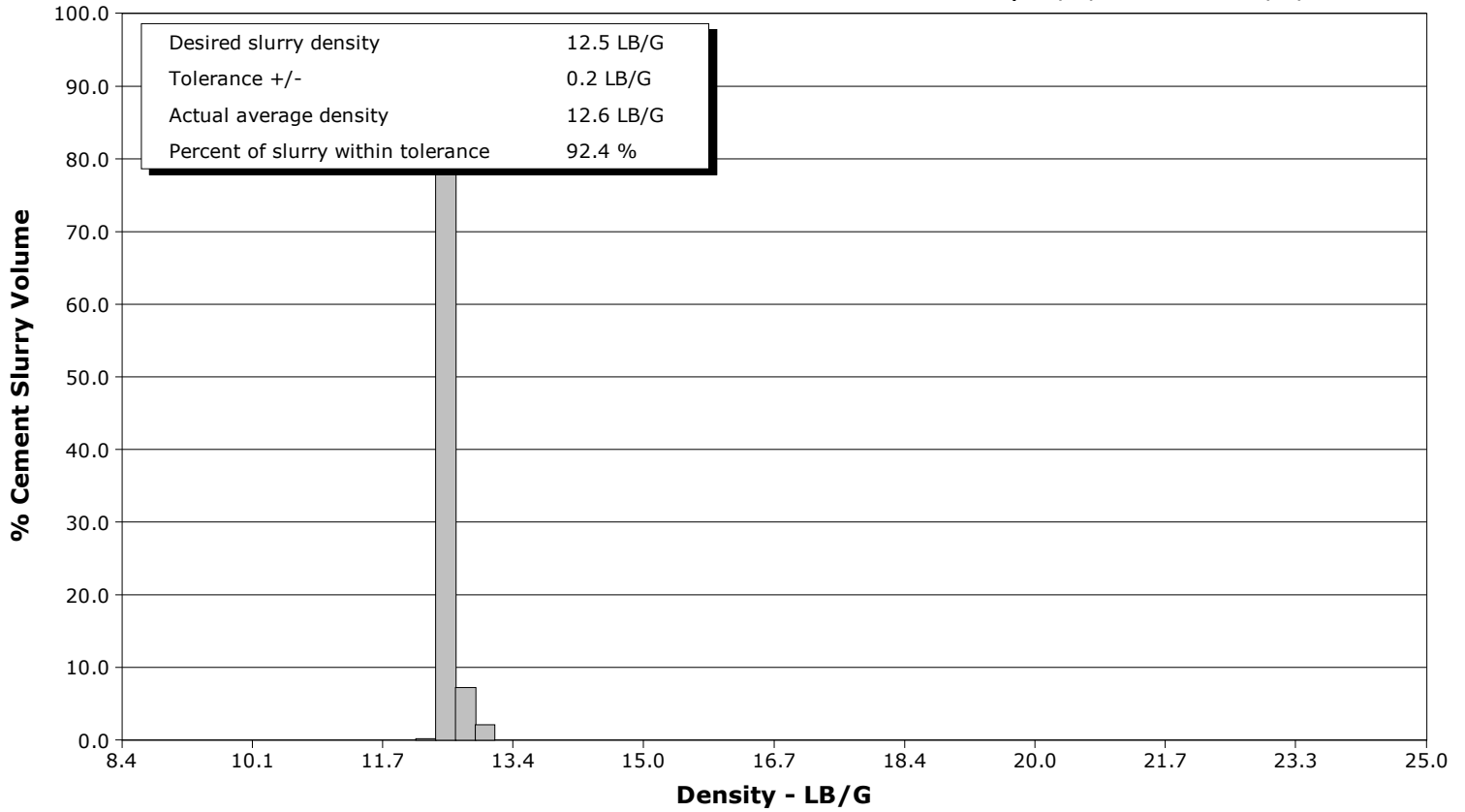
Well	Horsetail 30F 1941	Client	Whiting
Field	Wildcat	SIR No.	D2IK-00125
Engineer	Ryan Drilling	Job Type	7" Intermediate
Country	United States	Job Date	11-02-2014



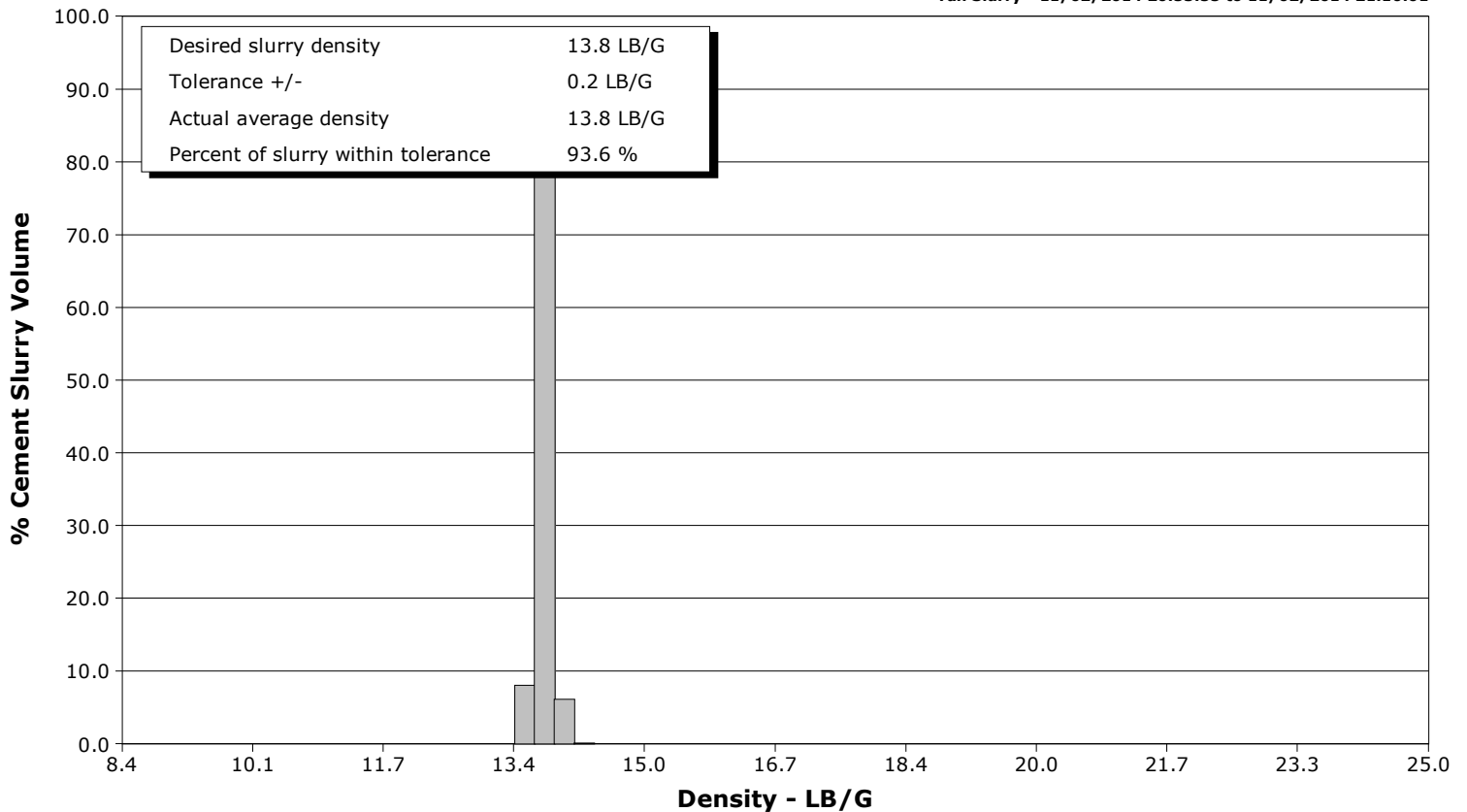
Well Horsetail 30F 1941
Field Wildcat
Engineer Ryan Drilling
Country United States

Client Whiting
SIR No. D2IK-00125
Job Type 7" Intermediate
Job Date 11-02-2014

Lead Slurry - 11/02/2014 20:09:47 to 11/02/2014 20:50:00



Tail Slurry - 11/02/2014 20:53:55 to 11/02/2014 21:10:01



					Customer Whiting			Job Number D2IK-00125			
Well Horsetail 30F 1941			Location (legal) SENW Sec 30 10N 57W			Schlumberger Location Rock Springs			Job Start Nov/02/2014		
Field Wildcat		Formation Name/Type Shale			Deviation 90 deg		Bit Size 8.8 in		Well MD 6222.0 ft		Well TVD 5534.0 ft
County Weld		State/Province Colorado			BHP psi		BHST 185 degF		BHCT 148 degF		Pore Press. Gradient lb/gal
Well Master 0631523939		API/UWI 05123387420000									
Rig Name Xtreme 18		Drilled For Oil		Service Via Land		Casing/Liner					
						Depth, ft	Size, in	Weight, lb/ft	Grade	Thread	
Offshore Zone		Well Class New		Well Type Development		1595.1	9.6	36.0	J55	8RD	
						6202.0	7.0	29.0	L80	8RD	
Drilling Fluid Type Bentonite		Max. Density 9.70 lb/gal		Plastic Viscosity cP		Tubing/Drill Pipe					
						T/D	Depth, ft	Size, in	Weight, lb/ft	Grade	Thread
Service Line Cementing		Job Type 7" Intermediate									
Max. Allowed Tub. Press psi		Max. Allowed Ann. Press psi		WH Connection Single Cement head		Perforations/Open Hole					
						Top, ft	Bottom, ft	shot/ft	No. of Shots	Total Interval ft	
Service Instructions Cement 7" Intermediate Casingat 5960 ft. Top of Lead: Surface (30% Excess) Top of Tail: 4500ft (35% excess) 8 3/4" OH						ft	ft			Diameter in	
						ft	ft				
						Treat Down Casing		Displacement 228.9 bbl		Packer Type ft	
						Tubing Vol. bbl		Casing Vol. 228.9 bbl		Annular Vol. 47.5 bbl	
										Openhole Vol. 123.2 bbl	
Casing/Tubing Secured <input checked="" type="checkbox"/>		1 Hole Vol. Circulated prior to Cement <input checked="" type="checkbox"/>			Casing Tools			Squeeze Job			
Lift Pressure psi					Shoe Type Float			Squeeze Type			
Pipe Rotated <input type="checkbox"/>		Pipe Reciprocated <input type="checkbox"/>			Shoe Depth 6202.0 ft			Tool Type			
No. Centralizers		Top Plugs 1		Bottom Plugs		Stage Tool Type			Tool Depth ft		
Cement Head Type Single					Stage Tool Depth ft			Tail Pipe Size in			
Job Scheduled For Nov/02/2014 17:30		Arrived on Location Nov/02/2014 18:00		Leave Location Nov/03/2014 00:30		Collar Type Float			Tail Pipe Depth ft		
						Collar Depth 6161.0 ft			Sqz. Total Vol. bbl		
Date	Time 24-hr clock	Treating Pressure PSI	Flow Rate B/M	Density LB/G	Volume BBL	Solid Fraction NULL	Message				
11/02/2014	19:31:07	3	0.0	8.32	0.0	0	Started Acquisition				
11/02/2014	19:31:10	3	0.0	8.32	0.0	0	Start Pumping Water				
11/02/2014	19:31:14	4	0.0	8.32	0.0	0	Pressure Test Lines				
11/02/2014	19:32:07	7	0.0	8.32	0.0	0					
11/02/2014	19:33:07	5	0.0	8.32	0.0	0					
11/02/2014	19:34:07	571	3.2	8.31	1.2	0					
11/02/2014	19:35:07	137	0.0	8.33	0.0	0					
11/02/2014	19:36:07	943	0.0	8.32	0.0	0					
11/02/2014	19:37:07	928	0.0	8.32	0.0	0					
11/02/2014	19:38:07	924	0.0	8.32	0.0	0					
11/02/2014	19:39:07	1501	0.0	8.32	0.0	0					
11/02/2014	19:40:07	5222	0.0	8.32	0.0	0					
11/02/2014	19:41:07	5205	0.0	8.32	0.0	0					
11/02/2014	19:42:07	5196	0.0	8.32	0.0	0					
11/02/2014	19:43:07	34	0.0	8.32	0.0	0					
11/02/2014	19:44:07	168	0.0	8.32	0.0	0					
11/02/2014	19:45:02	171	0.0	8.32	0.0	0	End Water				
11/02/2014	19:45:05	169	0.0	8.32	0.0	0	Reset Total, Vol = 4.38 bbl				
11/02/2014	19:45:07	169	0.0	8.32	0.0	0					
11/02/2014	19:46:07	170	0.0	8.32	0.0	0					
11/02/2014	19:47:07	175	0.0	8.32	0.0	0					

Well			Field		Job Start	Customer		Job Number
Horsetail 30F 1941 30F 1941			Wildcat		Nov/02/2014	Whiting		D2IK-00125
Date	Time 24-hr clock	Treating Pressure PSI	Flow Rate B/M	Density LB/G	Volume BBL	Solid Fraction NULL	Message	
11/02/2014	19:49:07	174	0.0	8.32	0.0	0		
11/02/2014	19:50:07	177	0.0	8.32	0.0	0		
11/02/2014	19:51:07	178	0.0	8.32	0.0	0		
11/02/2014	19:52:07	178	0.0	8.32	0.0	0		
11/02/2014	19:53:07	179	0.0	8.32	0.0	0		
11/02/2014	19:54:07	177	0.0	8.32	0.0	0		
11/02/2014	19:55:07	180	0.0	8.32	0.0	0		
11/02/2014	19:56:07	235	0.8	8.32	0.0	19		
11/02/2014	19:56:20	708	4.6	10.55	0.5	19	Start Pumping Spacer	
11/02/2014	19:57:07	534	4.8	10.57	4.3	21		
11/02/2014	19:58:07	525	4.8	10.57	9.0	29		
11/02/2014	19:59:07	525	4.8	10.56	13.8	33		
11/02/2014	19:59:47	225	3.3	10.57	16.8	46	End Spacer	
11/02/2014	20:00:07	112	0.0	10.64	17.0	0		
11/02/2014	20:00:14	113	0.0	10.64	17.0	0	Reset Total, Vol = 17 bbl	
11/02/2014	20:01:07	118	0.0	10.64	17.0	0		
11/02/2014	20:02:07	124	0.0	10.64	0.0	0		
11/02/2014	20:03:07	130	0.0	10.64	0.0	0		
11/02/2014	20:04:07	132	0.0	10.63	0.0	0		
11/02/2014	20:05:07	135	0.0	10.63	0.0	0		
11/02/2014	20:06:07	137	0.0	10.63	0.0	0		
11/02/2014	20:07:07	139	0.0	10.63	0.0	0		
11/02/2014	20:08:07	145	0.0	10.62	0.0	18		
11/02/2014	20:09:07	622	4.8	12.64	4.1	19		
11/02/2014	20:09:47	575	4.8	12.63	7.2	19	Start Mixing Lead Slurry	
11/02/2014	20:10:07	605	4.8	12.63	8.8	19		
11/02/2014	20:11:07	538	4.8	12.56	13.6	21		
11/02/2014	20:12:07	545	4.8	12.53	18.4	23		
11/02/2014	20:13:07	690	6.1	12.54	24.2	25		
11/02/2014	20:14:07	693	6.1	12.61	30.3	27		
11/02/2014	20:15:07	656	6.1	12.60	36.4	27		
11/02/2014	20:15:39	633	6.1	12.72	39.6	28	Wet and Dry Sample Taken	
11/02/2014	20:16:07	618	6.1	12.84	42.4	29		
11/02/2014	20:16:28	621	6.1	12.92	44.6	29	Lead Sample Tie #5608	
11/02/2014	20:17:07	645	6.1	12.74	48.5	28		
11/02/2014	20:18:07	571	6.1	12.65	54.6	31		
11/02/2014	20:19:07	41	1.3	12.49	57.3	29		
11/02/2014	20:20:07	11	1.2	12.63	58.8	32		
11/02/2014	20:21:07	17	1.0	12.56	59.9	32		
11/02/2014	20:22:07	20	0.9	12.55	60.9	32		
11/02/2014	20:23:07	19	1.0	12.55	61.8	33		
11/02/2014	20:24:07	20	0.9	12.54	62.8	39		
11/02/2014	20:25:07	10	0.0	12.53	63.3	0		
11/02/2014	20:26:07	11	0.0	12.53	63.3	0		
11/02/2014	20:27:07	10	0.0	12.53	63.3	0		
11/02/2014	20:28:07	10	0.0	12.53	63.3	0		
11/02/2014	20:29:07	10	0.0	12.53	63.3	0		
11/02/2014	20:30:07	10	0.0	12.53	63.3	0		
11/02/2014	20:31:07	10	0.0	12.52	63.3	0		
11/02/2014	20:32:07	10	0.0	12.52	63.3	0		
11/02/2014	20:33:07	10	0.0	12.52	63.3	0		
11/02/2014	20:34:07	10	0.0	12.52	63.3	0		
11/02/2014	20:35:07	11	0.0	12.52	63.3	0		
11/02/2014	20:36:07	186	4.9	12.56	65.4	40		

Well			Field		Job Start	Customer		Job Number
Horsetail 30F 1941 30F 1941			Wildcat		Nov/02/2014	Whiting		D2IK-00125
Date	Time 24-hr clock	Treating Pressure PSI	Flow Rate B/M	Density LB/G	Volume BBL	Solid Fraction NULL	Message	
11/02/2014	20:38:07	501	6.1	12.56	76.8	29		
11/02/2014	20:39:07	523	6.2	12.54	82.9	28		
11/02/2014	20:40:07	459	6.1	12.58	89.0	27		
11/02/2014	20:41:07	470	6.1	12.54	95.2	27		
11/02/2014	20:42:07	429	6.1	12.57	101.3	27		
11/02/2014	20:43:07	391	6.2	12.55	107.5	28		
11/02/2014	20:44:07	401	6.2	12.57	113.6	28		
11/02/2014	20:45:07	343	6.2	12.55	119.8	28		
11/02/2014	20:46:07	308	6.2	12.60	126.0	28		
11/02/2014	20:47:07	324	6.2	12.57	132.2	28		
11/02/2014	20:48:07	102	3.4	12.55	137.2	40		
11/02/2014	20:49:07	90	3.4	12.52	140.6	45		
11/02/2014	20:50:00	87	3.0	12.53	143.4	45	End Lead Slurry	
11/02/2014	20:50:07	89	3.0	12.52	143.8	44		
11/02/2014	20:50:54	104	2.9	13.81	146.2	35	Reset Total, Vol = 146.22 bbl	
11/02/2014	20:51:07	107	2.9	13.98	146.8	33		
11/02/2014	20:52:07	6	1.3	13.41	149.2	0		
11/02/2014	20:53:07	11	0.0	13.42	149.3	0		
11/02/2014	20:53:55	97	2.7	13.58	150.4	26	Start Mixing Tail Slurry	
11/02/2014	20:54:07	99	2.6	13.59	150.9	26		
11/02/2014	20:55:07	101	2.7	13.59	153.6	34		
11/02/2014	20:56:07	97	2.7	13.68	156.2	34		
11/02/2014	20:56:45	99	2.6	13.76	157.9	33	Wet and Dry Sample Taken	
11/02/2014	20:56:55	99	2.6	13.77	158.3	33	Tail Sample Tie #5829	
11/02/2014	20:57:07	102	2.6	13.78	158.9	33		
11/02/2014	20:58:07	104	2.6	13.78	161.5	33		
11/02/2014	20:59:07	100	2.7	13.86	164.2	33		
11/02/2014	21:00:07	99	2.7	13.86	166.8	33		
11/02/2014	21:01:07	99	2.6	13.86	169.5	33		
11/02/2014	21:02:07	102	2.7	13.87	172.1	34		
11/02/2014	21:03:07	344	4.5	13.87	175.1	34		
11/02/2014	21:04:07	361	5.7	13.88	180.7	35		
11/02/2014	21:05:07	184	3.9	13.89	185.4	35		
11/02/2014	21:06:07	180	3.9	13.88	189.3	36		
11/02/2014	21:07:07	179	3.9	13.88	193.3	41		
11/02/2014	21:08:07	173	3.9	13.88	197.2	53		
11/02/2014	21:09:07	174	4.0	13.88	201.2	58		
11/02/2014	21:10:01	17	2.5	14.39	203.9	68	End Tail Slurry	
11/02/2014	21:10:04	-7	1.2	2.53	204.0	68	Reset Total, Vol = 57.86 bbl	
11/02/2014	21:10:07	-18	7.5	0.26	204.2	0		
11/02/2014	21:10:36	11	0.0	0.14	204.4	0	Drop Top Plug	
11/02/2014	21:10:39	11	0.0	0.13	204.4	0	Start Displacement	
11/02/2014	21:10:40	11	0.0	0.13	204.4	0	Washup Pump and Line	
11/02/2014	21:11:07	15	0.0	0.09	204.4	0		
11/02/2014	21:12:07	16	0.0	0.06	204.4	0		
11/02/2014	21:13:07	17	0.0	0.06	204.4	0		
11/02/2014	21:14:07	18	0.0	0.05	204.4	0		
11/02/2014	21:15:07	19	0.0	0.05	204.4	0		
11/02/2014	21:16:07	19	0.0	0.05	204.4	0		
11/02/2014	21:17:07	16	0.0	0.05	204.4	0		
11/02/2014	21:18:07	16	0.0	0.05	0.0	0		
11/02/2014	21:19:07	81	18.8	4.16	4.8	69		
11/02/2014	21:20:07	37	3.7	8.45	9.8	77		
11/02/2014	21:21:07	45	3.9	9.17	13.7	88		

Well			Field		Job Start	Customer		Job Number
Horsetail 30F 1941 30F 1941			Wildcat		Nov/02/2014	Whiting		D2IK-00125
Date	Time 24-hr clock	Treating Pressure PSI	Flow Rate B/M	Density LB/G	Volume BBL	Solid Fraction NULL	Message	
11/02/2014	21:23:07	56	3.6	8.48	20.7	46		
11/02/2014	21:24:07	58	3.7	8.37	24.2	28		
11/02/2014	21:25:07	39	4.7	8.32	27.9	7		
11/02/2014	21:26:07	92	5.9	8.30	32.6	83		
11/02/2014	21:27:07	5	2.5	8.33	38.8	65		
11/02/2014	21:28:07	276	7.6	10.17	45.6	0		
11/02/2014	21:29:07	299	7.6	10.22	53.2	0		
11/02/2014	21:30:07	304	7.6	10.37	60.9	0		
11/02/2014	21:31:07	591	7.6	10.38	68.5	0		
11/02/2014	21:32:07	664	7.6	10.37	76.0	0		
11/02/2014	21:33:07	749	7.5	10.39	83.6	0		
11/02/2014	21:34:07	813	7.5	10.38	91.1	0		
11/02/2014	21:35:07	882	7.5	10.39	98.6	0		
11/02/2014	21:36:07	928	7.5	10.39	106.2	0		
11/02/2014	21:37:07	963	7.5	10.38	113.7	0		
11/02/2014	21:38:07	1031	7.5	10.38	121.2	0		
11/02/2014	21:39:07	1034	7.5	10.38	128.7	0		
11/02/2014	21:40:07	1094	7.5	10.38	136.2	0		
11/02/2014	21:41:07	1145	7.5	10.38	143.7	0		
11/02/2014	21:42:07	1186	7.5	10.38	151.3	0		
11/02/2014	21:43:07	1234	7.5	10.38	158.7	0		
11/02/2014	21:44:07	1308	7.5	10.38	166.3	0		
11/02/2014	21:45:07	1356	7.5	10.38	173.7	0		
11/02/2014	21:46:07	1461	7.5	10.38	181.2	0		
11/02/2014	21:47:07	1511	7.5	10.38	188.7	0		
11/02/2014	21:48:07	1341	6.1	10.37	196.0	0		
11/02/2014	21:49:07	1353	6.1	10.37	202.1	0		
11/02/2014	21:49:31	1132	4.8	10.37	204.5	0	Cement to Surface, 189 Bbl Away	
11/02/2014	21:50:07	1164	4.8	10.37	207.3	0		
11/02/2014	21:51:07	1226	4.7	8.88	212.1	0		
11/02/2014	21:52:07	1163	5.1	8.55	217.0	0		
11/02/2014	21:53:07	1219	4.8	8.54	221.9	0		
11/02/2014	21:54:07	1233	4.4	8.37	226.4	0		
11/02/2014	21:55:07	991	2.1	8.36	230.0	0		
11/02/2014	21:56:07	1102	2.1	8.36	232.1	0		
11/02/2014	21:57:07	1056	2.1	8.34	234.2	0		
11/02/2014	21:58:07	1003	2.1	8.34	236.3	0		
11/02/2014	21:59:07	1157	2.1	8.34	238.4	0		
11/02/2014	22:00:07	1745	0.4	8.34	240.5	0		
11/02/2014	22:01:07	1760	0.0	8.34	240.5	0		
11/02/2014	22:02:07	1777	0.0	8.34	240.5	0		
11/02/2014	22:03:07	1790	0.0	8.35	240.5	0		
11/02/2014	22:03:23	1408	0.0	8.35	240.5	0	Bump Top Plug	
11/02/2014	22:03:28	945	0.0	8.35	240.5	0	End Displacement	
11/02/2014	22:03:29	802	0.0	8.35	240.5	0	Reset Total, Vol = 229 bbl	
11/02/2014	22:03:32	288	0.0	8.35	240.5	0	Floats Hold, 1.25 Bbl Back	
11/02/2014	22:04:07	23	0.0	8.35	240.5	0		
11/02/2014	22:05:07	37	0.0	8.35	240.5	0		
11/02/2014	22:06:07	815	0.7	8.35	241.0	0		
11/02/2014	22:07:07	1504	0.0	8.35	241.5	0		
11/02/2014	22:07:11	1505	0.0	8.35	241.5	0	Start Casing Test	
11/02/2014	22:08:07	1510	0.0	8.35	241.5	0		
11/02/2014	22:09:07	1516	0.0	8.35	241.5	0		
11/02/2014	22:10:07	1522	0.0	8.35	241.5	0		

Well			Field		Job Start	Customer		Job Number
Horsetail 30F 1941 30F 1941			Wildcat		Nov/02/2014	Whiting		D2IK-00125
Date	Time 24-hr clock	Treating Pressure PSI	Flow Rate B/M	Density LB/G	Volume BBL	Solid Fraction NULL	Message	
11/02/2014	22:12:07	1535	0.0	8.35	241.5	0		
11/02/2014	22:13:07	1542	0.0	8.35	241.5	0		
11/02/2014	22:14:07	1549	0.0	8.35	241.5	0		
11/02/2014	22:15:07	1556	0.0	8.35	241.5	0		
11/02/2014	22:16:07	1563	0.0	8.35	241.5	0		
11/02/2014	22:17:07	1570	0.0	8.35	241.5	0		
11/02/2014	22:18:07	1577	0.0	8.35	241.5	0		
11/02/2014	22:19:07	1584	0.0	8.35	241.5	0		
11/02/2014	22:20:07	1590	0.0	8.35	241.5	0		
11/02/2014	22:21:07	1597	0.0	8.35	241.5	0		
11/02/2014	22:22:07	1604	0.0	8.35	241.5	0		
11/02/2014	22:23:07	1610	0.0	8.35	241.5	0		
11/02/2014	22:24:07	1617	0.0	8.35	241.5	0		
11/02/2014	22:25:07	1623	0.0	8.35	241.5	0		
11/02/2014	22:26:07	1629	0.0	8.34	241.5	0		
11/02/2014	22:27:07	1635	0.0	8.34	241.5	0		
11/02/2014	22:28:07	1641	0.0	8.34	241.5	0		
11/02/2014	22:29:07	1647	0.0	8.33	241.5	0		
11/02/2014	22:30:07	1653	0.0	8.33	241.5	0		
11/02/2014	22:31:07	1659	0.0	8.33	241.5	0		
11/02/2014	22:32:07	1665	0.0	8.33	241.5	0		
11/02/2014	22:34:07	1675	0.0	8.33	241.5	0		
11/02/2014	22:35:07	1680	0.0	8.33	241.5	0		
11/02/2014	22:36:07	1685	0.0	8.33	241.5	0		
11/02/2014	22:37:07	1690	0.0	8.33	241.5	0		
11/02/2014	22:37:11	1690	0.0	8.33	241.5	0	End Casing Test	
11/02/2014	22:38:07	1694	0.0	8.33	241.5	0		
11/02/2014	22:38:37	15	0.0	8.33	241.5	0	Floats Hold	
11/02/2014	22:39:07	18	0.0	8.33	241.5	0		
11/02/2014	22:39:22	19	0.0	8.33	241.5	0	End Job	

Post Job Summary

Average Pump Rates, bbl/min				Volume of Fluid Injected, bbl			
Slurry	N2	Mud	Maximum Rate	Total Slurry	Mud	Spacer	N2
4.7			18.8	204.0	0.0	17.0	
Treating Pressure Summary, psi				Breakdown Fluid			
Maximum	Final	Average	Bump Plug to	Breakdown	Type	Volume	Density
5264	19	716	1700			bbl	lb/gal
Avg. N2 Percent	Designed Slurry Volume		Displacement	Mix Water Temp	Cement Circulated to Surface?		Volume
%	204.0 bbl		229.0 bbl	65 degF	<input checked="" type="checkbox"/>		40.0 bbl
Customer or Authorized Representative				Schlumberger Supervisor		Circulation Lost	
Kevin Mosley				Ryan Drilling		<input type="checkbox"/>	
						Job Completed <input checked="" type="checkbox"/>	