

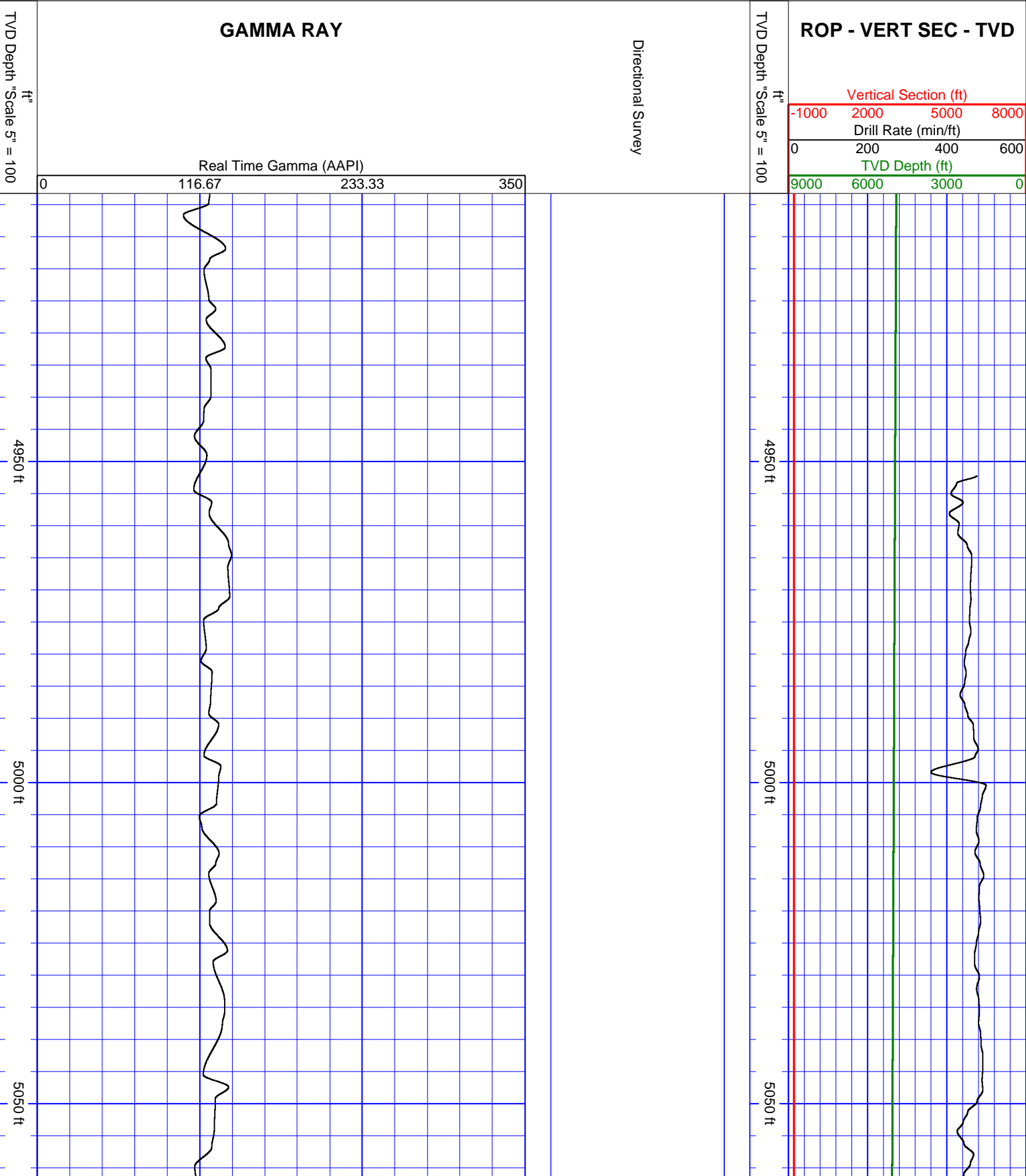


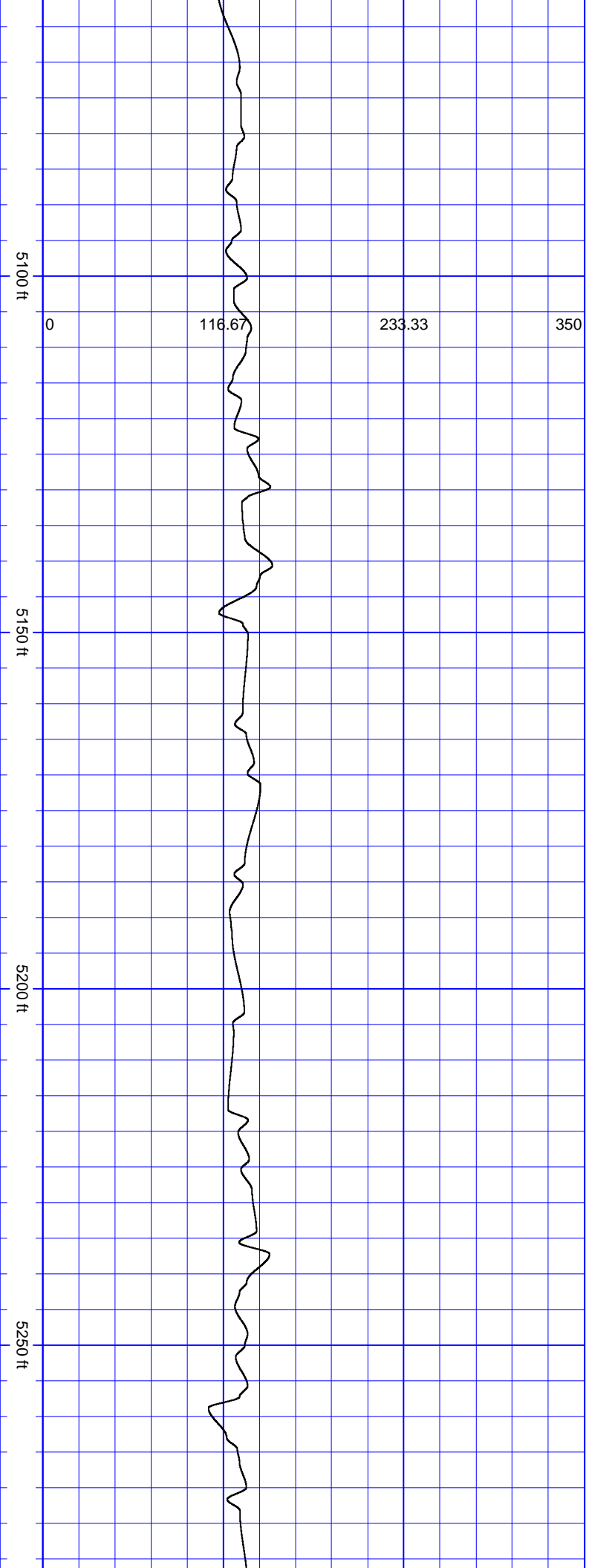
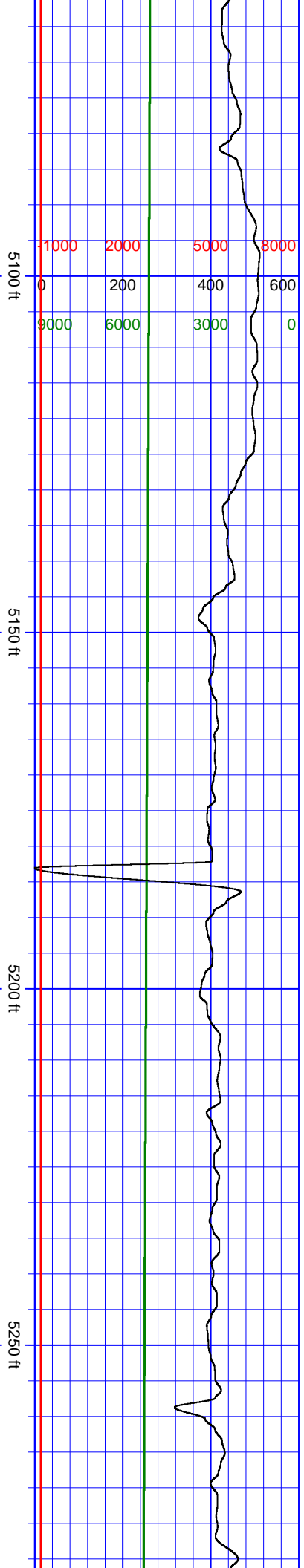
Oil Company: Whiting Petroleum
Well Name: Razor Federal 30K-3108
Surface Location: NESW Sec 30, T10N, R58W
Bit Run: 3
Log Depth Start: 4908.24 ft Log Depth End: 6110.06 ft
Data Depth Start: 4908.24 ft Data Depth End: 6110.06 ft

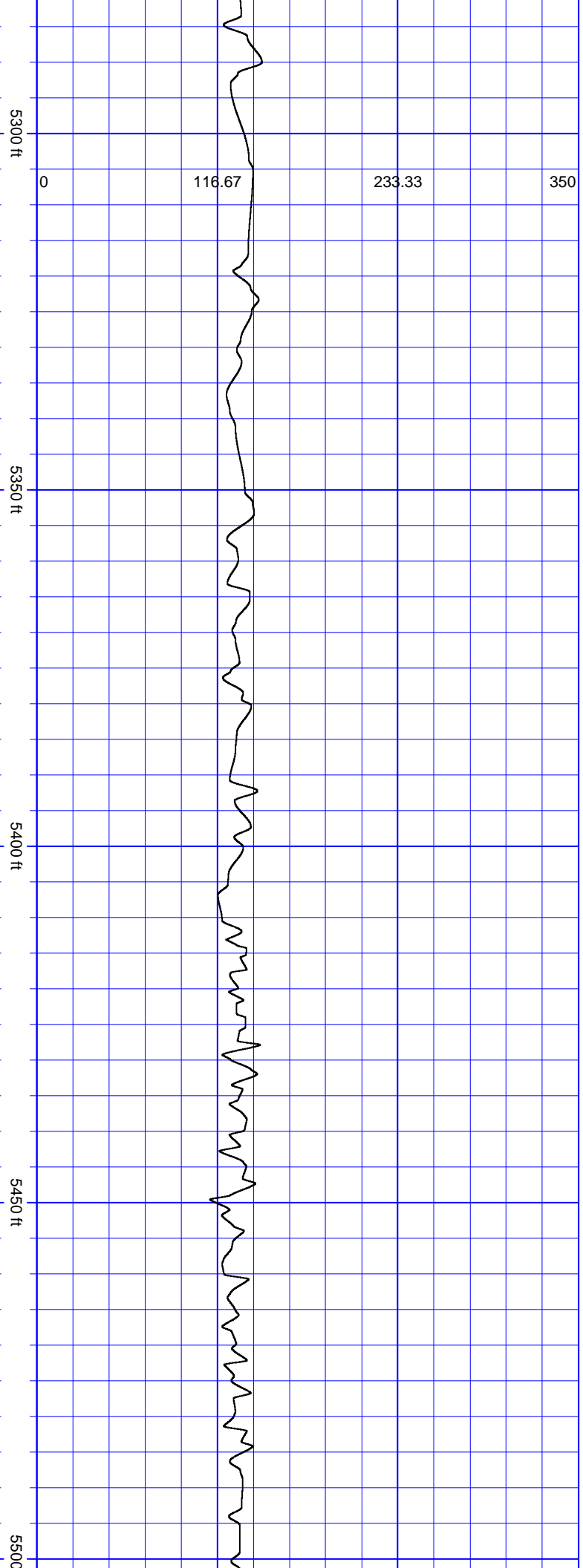
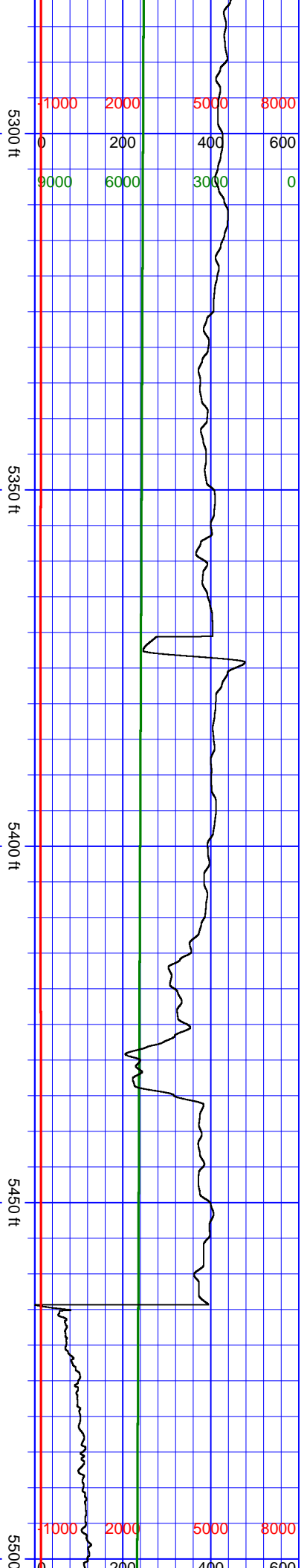
4849'KB
4828'GR

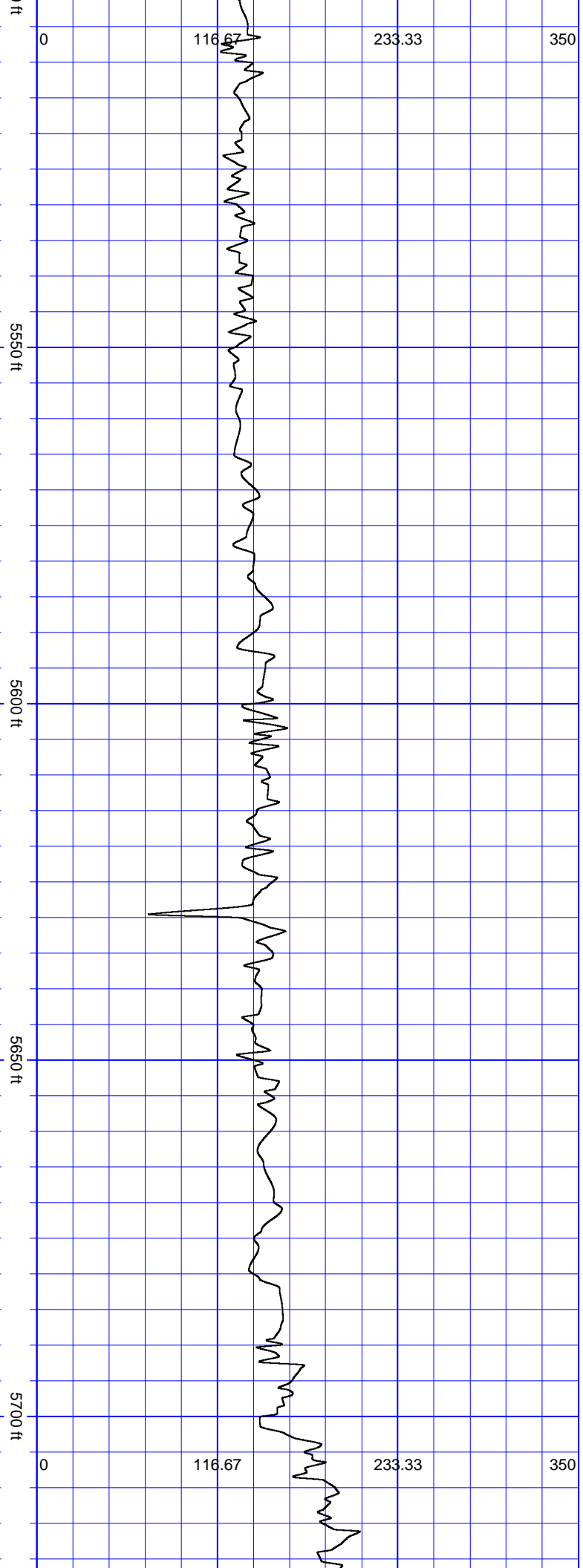
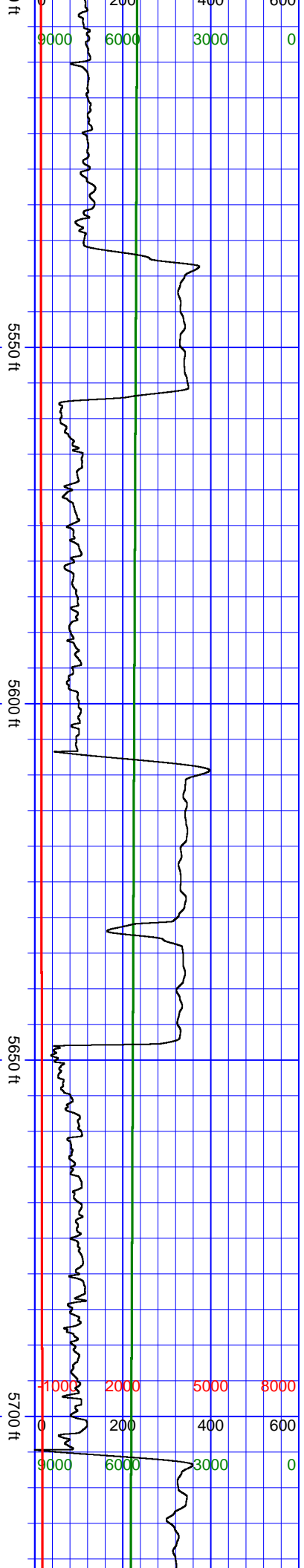
API 05-123-40215-00

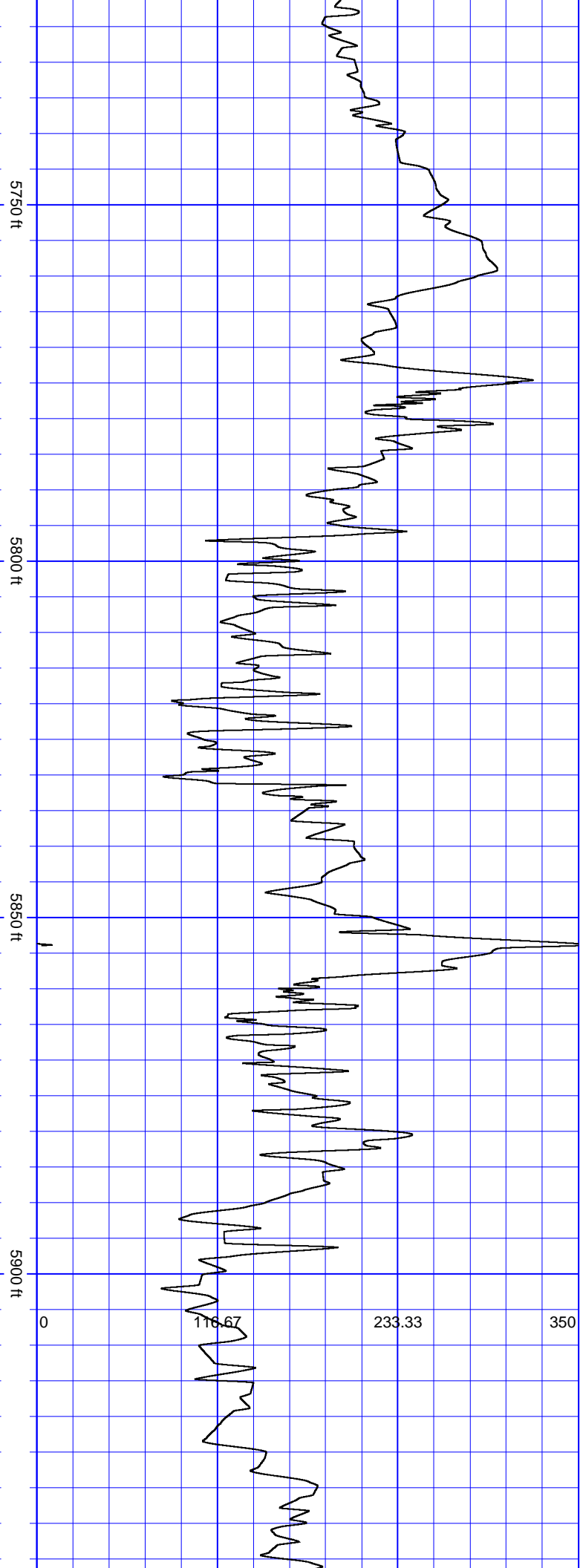
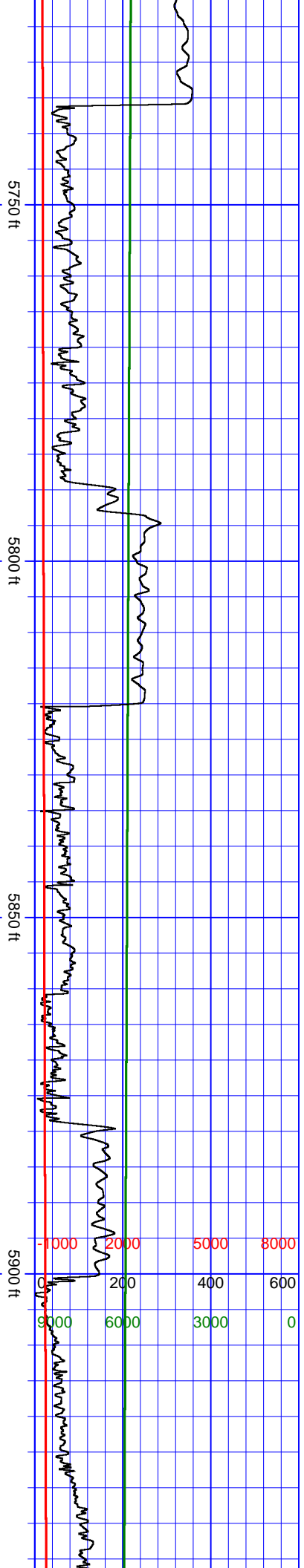
Interpretations of this data by Cathedral Energy Services will be of best judgment as to correctness. Cathedral Energy Services cannot and does not guarantee the accuracy or correctness of interpretations or any surveys derived therefrom. Cathedral Energy Services makes no warranties of performance, results, fitness or suitability for any particular purposes with respect to the goods being furnished under the terms and conditions. Cathedral Energy Services warrants that the equipment furnished will conform to Cathedral Energy Services published specifications in effect at the time and be in good working order.

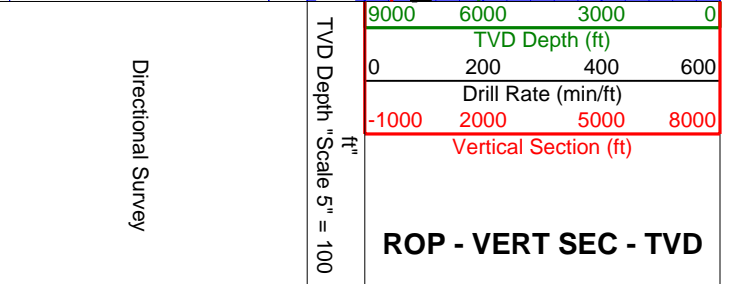
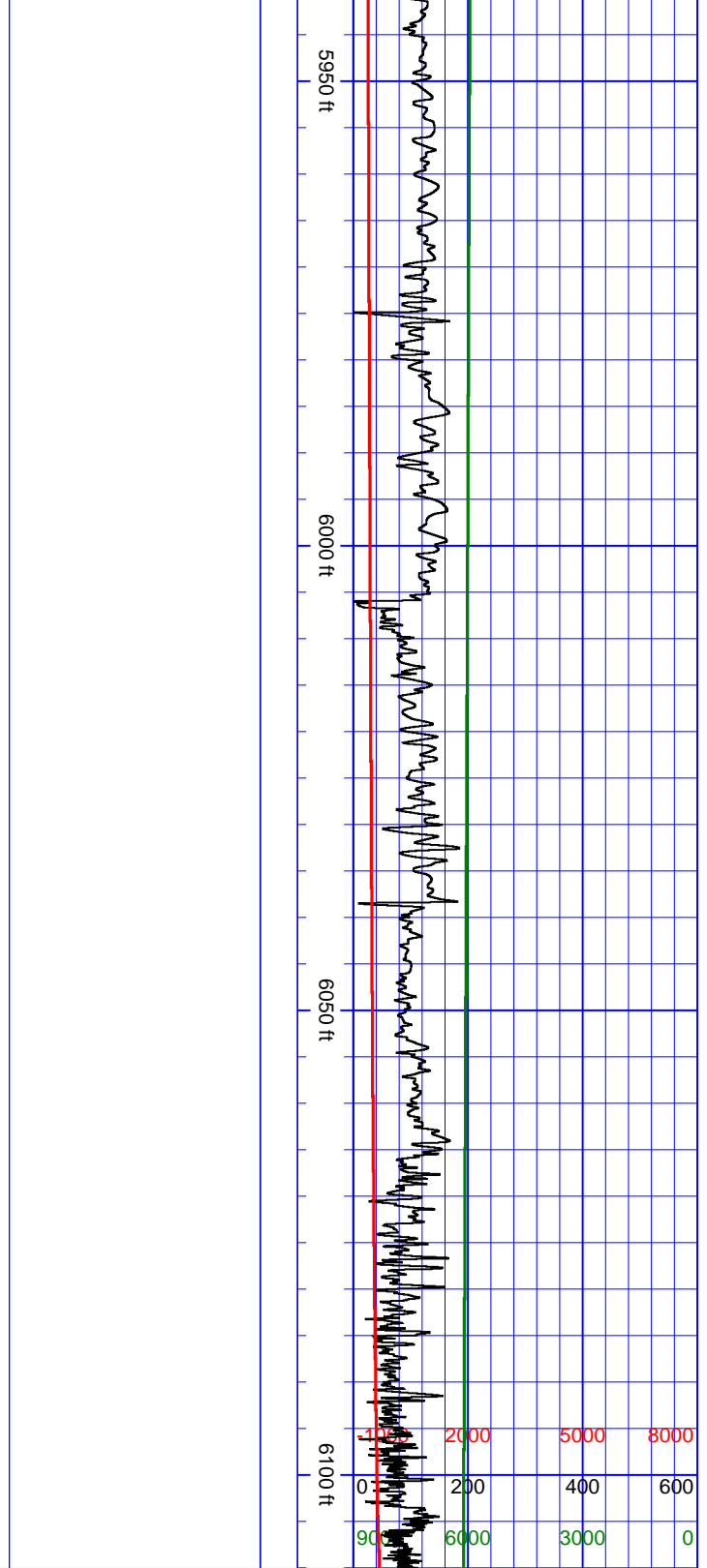
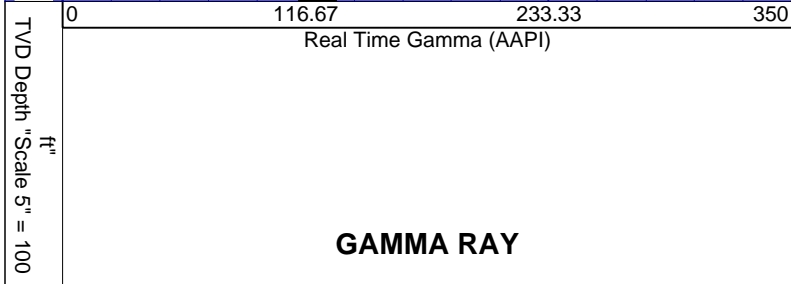
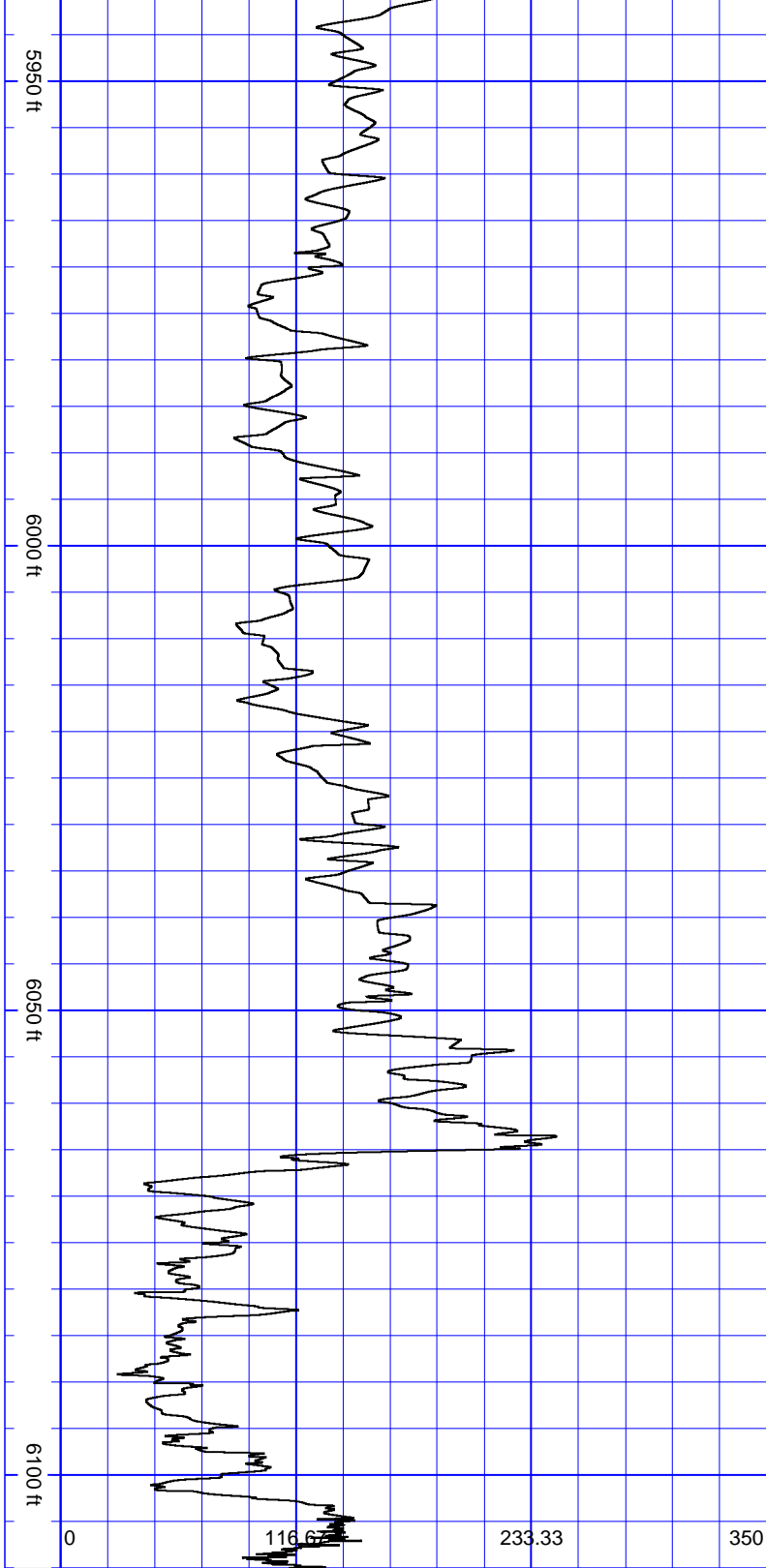












CATHEDRAL

Oil Company: Whiting Petroleum

Well Name: Razor Federal 30K-3108

Surface Location: NESW Sec 30, T10N-R58W

Bit Run: 3

Log Depth Start: 4908.24 ft Log Depth End: 6110.06 ft

Data Depth Start: 4908.24 ft Data Depth End: 6110.06 ft

4849'KB

4828'GR

API 05-123-40215-00

