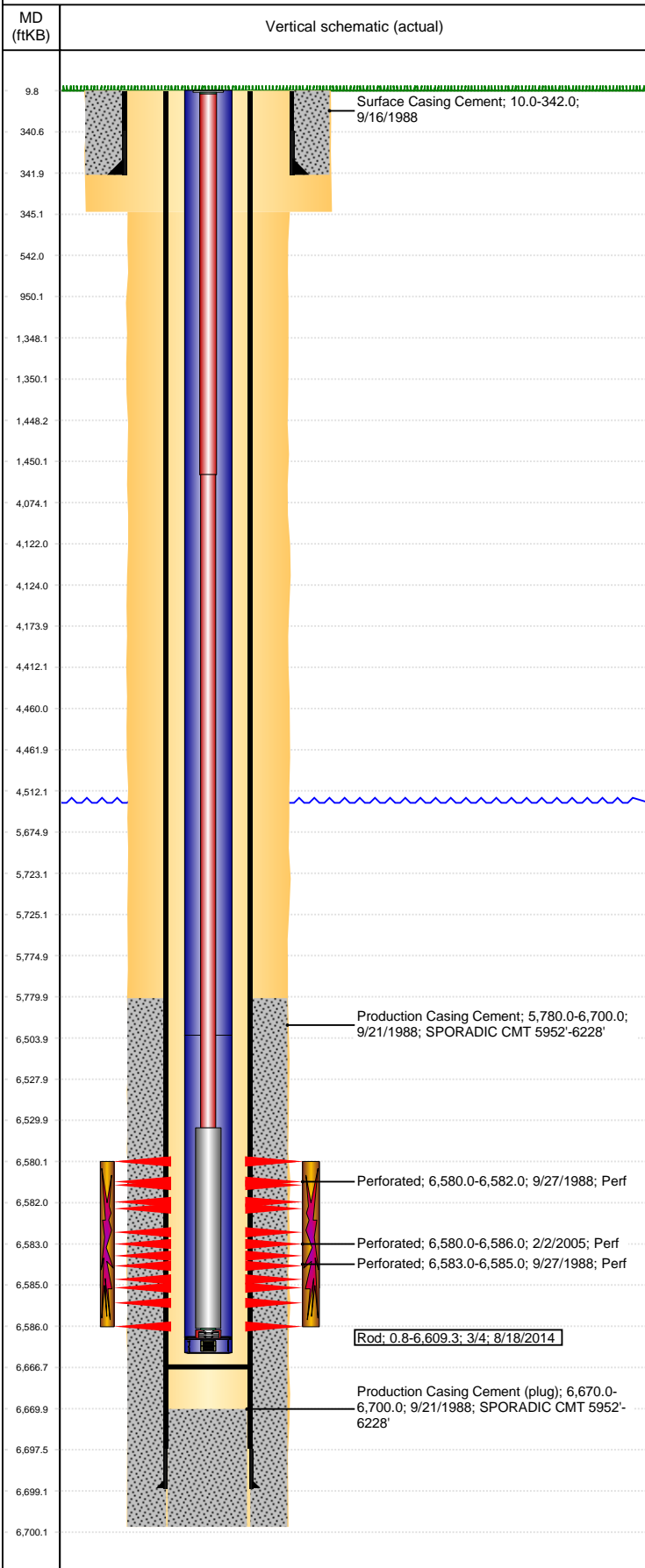


Well Name: LILLI UNIT 06-01

VERTICAL, ORIGINAL HOLE, 1/6/2021 1:10:40 PM



Well Header									
API 05-123-14044		Business Unit DJ BASIN			District 25		Well Config VERTICAL		
KB - GL / MSL (ft... 10.00		Spud Date 9/16/1988		P & A Date		Well Production Status PR			SoRT No
Comment WELL HAS PARAFFIN PROBLEMS, VERY LITTLE INFO AVAIL ON ORIG DRILL AND WORKOVERS.									
Surface Location (Congressional)									
Qtr 3 SE	Qtr 4 NW	Section 1	Twنشp 8	Twنشp... N	Range 59	Rng E/... W	Actual Latitude (°) 40.69168000		Actual Longitude (°) -103.92529000
Wellbore Sections									
Section Des			Size (in)			Act Top, MD (ftKB)		Act Btm, MD (ftKB)	
SURFACE			12 1/4			10		345	
PRODUCTION			7 7/8			345		6,700	
Casing Strings									
Csg Des		Run Date		OD (in)	Wt/Len (lb/ft)	Grade	Top, MD (ftKB)	MD (ftKB)	
Surface		9/16/1988		8 5/8	24.00	K-55	10.0	342.0	
Production		9/21/1988		4 1/2	11.60	J-55	10.0	6,699.0	
Cement									
Des				Start Date		Top (ftKB)		Btm (ftKB)	
Surface Casing Cement				9/16/1988		10.0		342.0	
Production Casing Cement				9/21/1988		5,780.0		6,700.0	
Zone Statuses									
Zone Name		Status Date		Status	Fluid Type	Job		Prod Method	
D SAND		10/12/1990		PR	Water	RE-FRAC, 10/9/1990 05:00		Flowing	
D SAND		5/1/2010		PR					
Perforation Data									
Linked Zone			Bnch/Stg	Entered Shot Total	Top (ftKB)		Btm (ftKB)		Date
D SAND, ORIGINAL HOLE				8	6,580.00		6,582.00		9/27/1988
D SAND, ORIGINAL HOLE				24	6,580.00		6,586.00		2/2/2005
D SAND, ORIGINAL HOLE				8	6,583.00		6,585.00		9/27/1988
Stimulation Intervals									
Zone				Start Date		Top (ftKB)		Btm (ftKB)	
D SAND, ORIGINAL HOLE				10/10/1990		6,580.0		6,586.0	
D SAND, ORIGINAL HOLE				9/29/1988		6,580.0		6,585.0	
Other In Hole									
Run Date		Des			Make		OD (in)	Top (ftKB)	Btm (ftKB)
Logs									
Date		Type				Top, MD (ftKB)		Btm, MD (ftKB)	
9/20/1988		INDUCTION				347.0		6,694.0	
9/21/1988		DENSITY				5,743.0		6,697.0	
9/21/1988		GAMMA RAY				5,743.0		6,665.0	
9/26/1988		CBL/CCL/GR				5,521.0		6,662.0	
Plug Back Total Depths									
Date		Type			Com				Depth (ftKB)
9/26/1988		FILL			CBL DEPTH LOGGER				6,670.0
10/1/2012		FILL			TAG BTM, TBG TALLY MEASUREMENT.				6,666.5