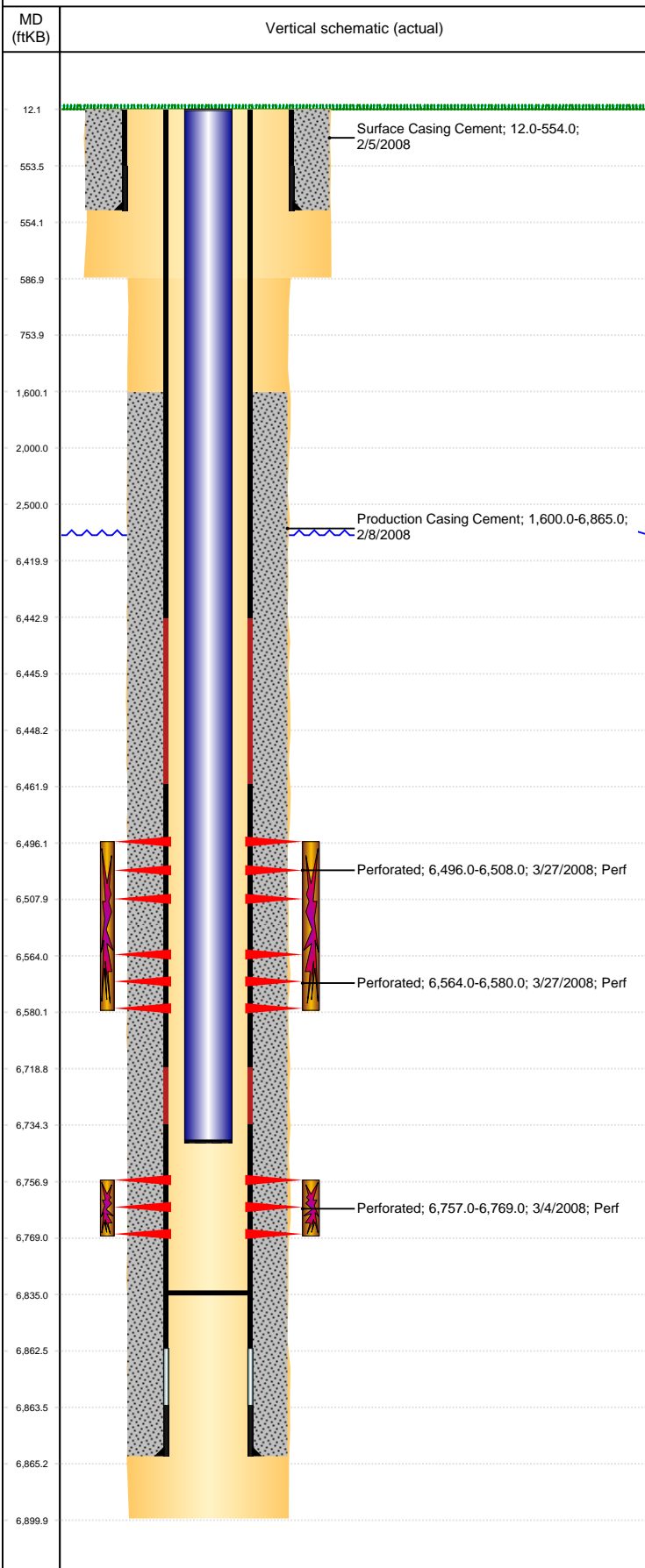


Well Name: COLEMAN C23-19

VERTICAL, ORIGINAL HOLE, 1/5/2021 4:17:12 PM



Well Header									
API 05-123-25411		Business Unit DJ BASIN			District 15		Well Config VERTICAL		
KB - GL / MSL (ft... 12.00		Spud Date 2/4/2008		P & A Date		Well Production Status PR			SoRT No
Comment									
Surface Location (Congressional)									
Qtr 3 NE	Qtr 4 NW	Section 23	Twnshp 4	Twnsh... N	Range 64	Rng E/... W	Actual Latitude (°) 40.30179605	Actual Longitude (°) -104.52237601	
Wellbore Sections									
Section Des			Size (in)			Act Top, MD (ftKB)		Act Btm, MD (ftKB)	
SURFACE			12 1/4			12		587	
PRODUCTION			7 7/8			587		6,900	
Casing Strings									
Csg Des			Run Date		OD (in)	Wt/Len (lb/ft)	Grade	Top, MD (ftKB)	MD (ftKB)
Surface			2/5/2008		8 5/8	24.00	J-55	12.0	554.0
Production			2/7/2008		4 1/2	11.60	M-80	12.0	6,865.0
Cement									
Des					Start Date		Top (ftKB)		Btm (ftKB)
Surface Casing Cement					2/5/2008		12.0		554.0
Production Casing Cement					2/8/2008		1,600.0		6,865.0
Zone Statuses									
Zone Name	Status Date	Status	Fluid Type	Job				Prod Method	
CODELL	3/28/2008	PR		DRILLING/COMPLETION - ORIGINAL, 2/4/2008...					
NIOBRARA	3/28/2008	PR		DRILLING/COMPLETION - ORIGINAL, 2/4/2008...					
Perforation Data									
Linked Zone		Bnch/Stg	Entered Shot Total	Top (ftKB)		Btm (ftKB)		Date	
NIOBRARA, ORIGINAL HOLE		A	24	6,496.00		6,508.00		3/27/2008	
NIOBRARA, ORIGINAL HOLE		B	32	6,564.00		6,580.00		3/27/2008	
CODELL, ORIGINAL HOLE			48	6,757.00		6,769.00		3/4/2008	
Stimulation Intervals									
Zone				Start Date		Top (ftKB)		Btm (ftKB)	
NIOBRARA, ORIGINAL HOLE				3/27/2008		6,496.0		6,580.0	
CODELL, ORIGINAL HOLE				3/27/2008		6,757.0		6,769.0	
Other In Hole									
Run Date		Des			Make	OD (in)	Top (ftKB)	Btm (ftKB)	
Logs									
Date		Type				Top, MD (ftKB)		Btm, MD (ftKB)	
2/7/2008		Caliper/Comp.Density/Neutron/GR/SP/ML				2,490.0		6,858.0	
2/7/2008		DIL/GR/SP/Caliper				554.0		6,878.0	
3/3/2008		CBL/CCL/GR				1,500.0		6,894.0	
Plug Back Total Depths									
Date		Type		Com				Depth (ftKB)	
2/7/2008		FLOAT COLLAR						6,863.0	
12/6/2008		PLUG REMNANTS						6,835.0	