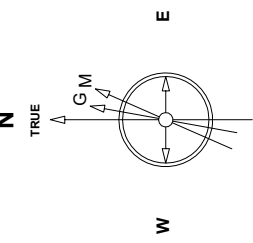


# Great Western Operating Company, LLC

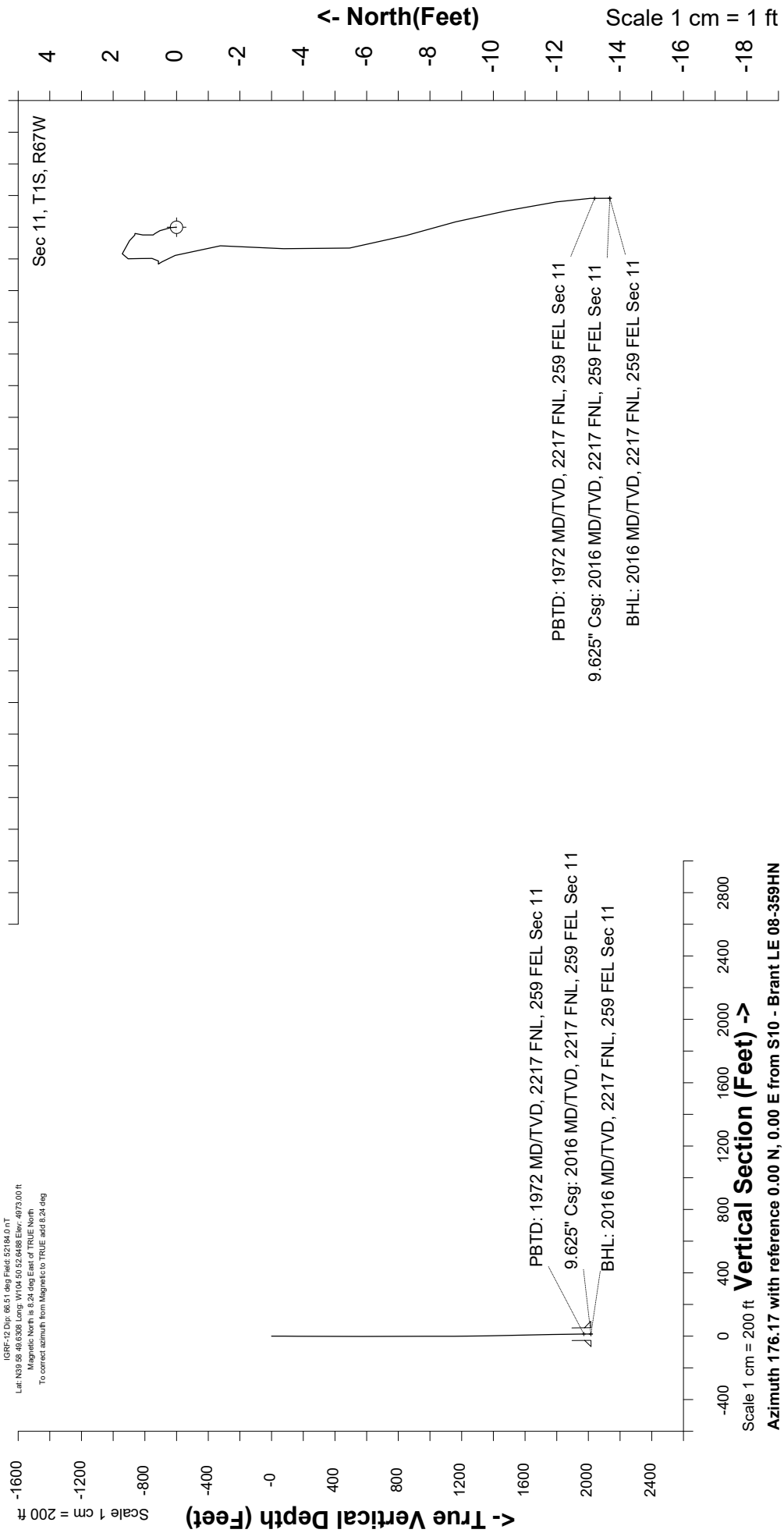
<b>Location</b>	Colorado	<b>Slot</b>	S10 - Brant LE 08-359HN
<b>Field</b>	Wattenburg	<b>Well</b>	Brant LE 08-359HN
<b>Installation</b>	Brant	<b>Wellbore</b>	Brant LE 08-359HN (AWB)

Scale 1 cm = 1 ft      East (Feet) ->

Created by	mmount
Date plotted	30-Oct-2020
Plot reference is	Brant LE 08-359HN (AWB)
Ref wellpath is	Brant LE 08-359HN (AWP#1)
Coordinates are in	Feet reference S10 - Brant LE 08-359HN.
True Vertical Depths are	reference Rig Datum.
Measured Depths are	reference Rig Datum.
Rig Datum:	Actual Datum #1
Rig Datum to Mean Sea Level:	4978.00ft.
Plot North is aligned to	TRUE North.



Apr-14-2017  
 IGRF-12 Date: 08.51 deg Field: 52784.0 nT  
 Lat: N39.58, 49.6388 Long: W104.50, 52.6488 Elev: -4973.00 ft  
 Magnetic North is 8.24 deg East of TRUE North.  
 To correct azimuth from Magnetic to TRUE, add 8.24 deg



Scale 1 cm = 200 ft  
**Vertical Section (Feet) ->**  
 Azimuth 176.17 with reference 0.00 N, 0.00 E from S10 - Brant LE 08-359HN

Scale 1 cm = 1 ft

North (Feet)

Great Western Operating Co, LLC  
 Directional Survey Report  
 Wellpath: Brant LE 08-359HN  
 MDs and TVDs are from Rig Floor 4978.0ft above Mean Sea Level

**Wellpath Report**

MD[ft]	Inc[deg]	Azi[deg]	TVD[ft]	North[ft]	East[ft]	DLS [deg/100ft]	Vertical Section[ft]
0.00	0.00	0.00	0.00	0.00	0.00		0.00
80.00	0.26	356.59	80.00	0.18	-0.01	0.32	-0.18
168.00	0.22	329.35	168.00	0.53	-0.11	0.14	-0.53
251.00	0.04	331.63	251.00	0.69	-0.20	0.22	-0.70
343.00	0.04	306.06	343.00	0.74	-0.25	0.02	-0.75
433.00	0.40	5.21	433.00	1.07	-0.24	0.42	-1.08
523.00	0.09	166.57	523.00	1.31	-0.20	0.54	-1.32
613.00	0.44	314.67	613.00	1.49	-0.43	0.58	-1.51
702.00	0.22	265.45	702.00	1.71	-0.84	0.38	-1.76
792.00	0.22	175.19	791.99	1.53	-1.00	0.35	-1.59
882.00	0.26	181.78	881.99	1.15	-0.99	0.05	-1.21
972.00	0.22	175.89	971.99	0.77	-0.98	0.05	-0.84
1062.00	0.13	252.97	1061.99	0.57	-1.07	0.25	-0.64
1152.00	0.04	10.04	1151.99	0.57	-1.16	0.17	-0.65
1242.00	0.79	154.80	1241.99	0.04	-0.89	0.91	-0.10
1332.00	1.10	177.21	1331.98	-1.38	-0.58	0.53	1.34
1422.00	1.45	186.79	1421.96	-3.38	-0.68	0.45	3.32
1512.00	1.23	170.79	1511.93	-5.46	-0.66	0.48	5.40
1602.00	1.10	163.94	1601.91	-7.24	-0.26	0.21	7.21
1692.00	0.97	165.08	1691.90	-8.81	0.17	0.15	8.80
1782.00	1.19	170.00	1781.88	-10.47	0.53	0.27	10.48
1872.00	0.79	169.82	1871.87	-12.00	0.80	0.44	12.02
1959.00	0.62	179.58	1958.86	-13.06	0.91	0.24	13.09
2016.00	0.62	179.58	2015.86	-13.68	0.92	==>	13.71