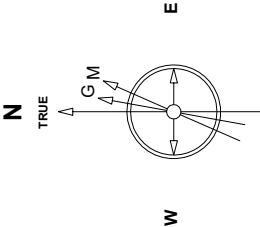


Great Western Operating Company, LLC

Created by: mmount	
Date plotted: 30-Oct-2020	
Plot reference is Brant LE 08-319HN (AWB).	
Ref wellpath is Brant LE 08-319HN (AWP#1).	
Coordinates are in Feet reference S09 - Brant LE 08-319HN.	
True Vertical Depths are reference Rig Datum.	
Measured Depths are reference Rig Datum.	
Rig Datum: Actual Datum #1	
Rig Datum to Mean Sea Level: 4978.00 ft.	
Plot North is aligned to TRUE North.	

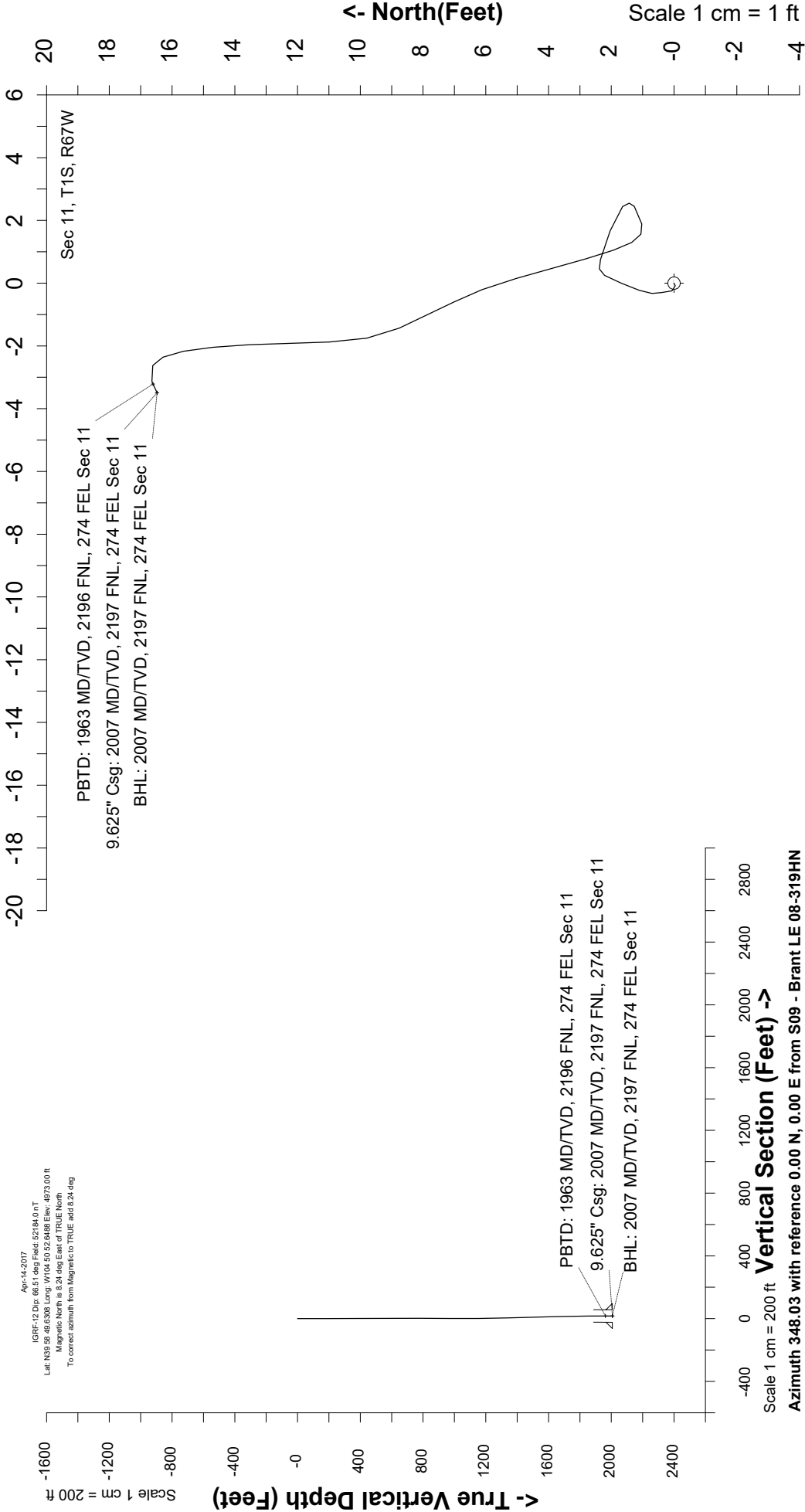
Location		Slot	S09 - Brant LE 08-319HN
Field		Well	Brant LE 08-319HN
Installation		Wellbore	Brant LE 08-319HN (AWB)



Apr-14-2017  
IGRF-12 Dat: 68.51 deg Field: 527.04 0 nT  
Lat: N39.58, 48.6308 Long: W104.50 52.6488 Elev: 4973.00 ft  
Magnetic North is 8.24 deg East of TRUE North  
To correct azimuth from Magnetic to TRUE add 8.24 deg

Scale 1 cm = 1 ft

East (Feet) ->



Great Western Operating Co, LLC  
 Directional Survey Report  
 Wellpath: Brant LE 08-319HN  
 MDs and TVDs are from Rig Floor 4978.0ft above Mean Sea Level

**Wellpath Report**

MD[ft]	Inc[deg]	Azi[deg]	TVD[ft]	North[ft]	East[ft]	DLS [deg/100ft]	Vertical Section[ft]
0.00	0.00	0.00	0.00	0.00	0.00		0.00
80.00	0.13	243.83	80.00	-0.04	-0.08	0.16	-0.02
168.00	0.22	334.27	168.00	0.07	-0.24	0.29	0.12
251.00	0.26	4.68	251.00	0.40	-0.30	0.16	0.45
343.00	0.13	334.18	343.00	0.70	-0.33	0.18	0.75
433.00	0.44	24.28	433.00	1.11	-0.23	0.41	1.13
523.00	0.35	18.48	523.00	1.68	0.00	0.11	1.65
613.00	0.40	30.52	612.99	2.22	0.25	0.10	2.12
702.00	0.48	111.82	701.99	2.34	0.75	0.65	2.14
792.00	0.75	106.46	791.99	2.04	1.67	0.31	1.65
882.00	0.40	137.66	881.98	1.64	2.44	0.51	1.10
972.00	0.31	236.01	971.98	1.27	2.45	0.60	0.73
1062.00	0.48	253.85	1061.98	1.03	1.89	0.23	0.61
1152.00	0.62	331.81	1151.98	1.35	1.30	0.78	1.06
1242.00	1.36	344.29	1241.96	2.81	0.78	0.85	2.59
1332.00	1.58	344.20	1331.93	5.03	0.15	0.24	4.89
1422.00	1.14	332.42	1421.91	7.02	-0.60	0.58	6.99
1512.00	1.32	336.29	1511.89	8.76	-1.43	0.22	8.87
1602.00	1.63	358.97	1601.86	10.99	-1.87	0.73	11.14
1692.00	1.63	357.12	1691.82	13.55	-1.96	0.06	13.66
1782.00	1.05	349.74	1781.79	15.64	-2.17	0.67	15.75
1872.00	0.44	298.41	1871.79	16.62	-2.62	0.94	16.80
1950.00	0.40	244.97	1949.79	16.64	-3.13	0.49	16.93
2007.00	0.40	244.97	2006.78	16.47	-3.49	==>	16.84