

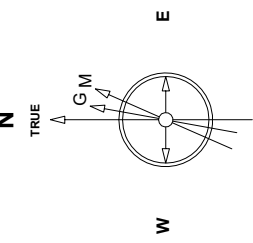
# Great Western Operating Company, LLC

<b>Location</b>	Colorado
<b>Field</b>	Wattenburg
<b>Installation</b>	Brant
<b>Slot</b>	S05 - Brant LE 08-242HN
<b>Well</b>	Brant LE 08-242HN
<b>Wellbore</b>	Brant LE 08-242HN (AWB)

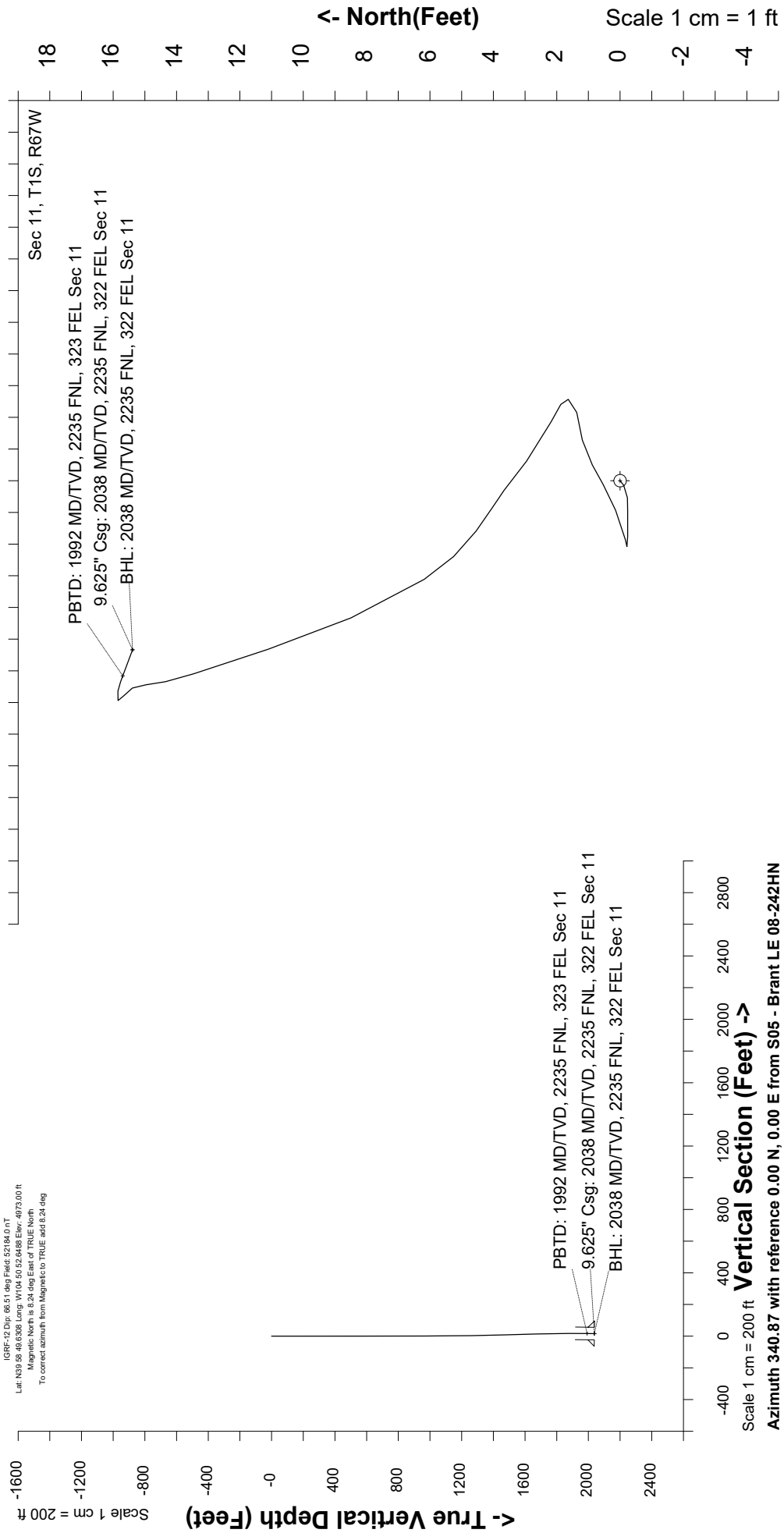
Scale 1 cm = 1 ft

Scale 1 cm = 1 ft

Created by	mmount
Date plotted	25-Oct-2020
Plot reference is	Brant LE 08-242HN (AWB)
Ref wellpath is	Brant LE 08-242HN (AWP#1)
Coordinates are in	Feet reference S05 - Brant LE 08-242HN.
True Vertical Depths are	reference Rig Datum.
Measured Depths are	reference Rig Datum.
Rig Datum:	Actual Datum #1
Rig Datum to Mean Sea Level:	4978.00 ft.
Plot North is aligned to	TRUE North.



Apr-14-2017  
 IGRF-12 Dip: 66.51 deg Field: 52784.0 nT  
 Lat: N39.58, 49.6388 Long: W104.50, 52.6488 Elev: 4973.00 ft  
 Magnetic North is 8.24 deg East of TRUE North.  
 To correct azimuth from Magnetic to TRUE, add 8.24 deg



Scale 1 cm = 200 ft  
 Azimuth 340.87 with reference 0.00 N, 0.00 E from S05 - Brant LE 08-242HN

Scale 1 cm = 1 ft

Great Western Operating Co, LLC  
 Directional Survey Report  
 Wellpath: Brant LE 08-242HN  
 MDs and TVDs are from Rig Floor 4978.0ft above Mean Sea Level

**Wellpath Report**

MD[ft]	Inc[deg]	Azi[deg]	TVD[ft]	North[ft]	East[ft]	DLS [deg/100ft]	Vertical Section[ft]
0.00	0.00	0.00	0.00	0.00	0.00		0.00
80.00	0.26	231.96	80.00	-0.11	-0.14	0.32	-0.06
168.00	0.31	270.99	168.00	-0.23	-0.54	0.22	-0.04
251.00	0.26	266.33	251.00	-0.24	-0.95	0.07	0.09
343.00	0.75	271.07	342.99	-0.24	-1.76	0.53	0.35
433.00	0.62	82.64	432.99	-0.17	-1.87	1.52	0.45
523.00	0.66	61.37	522.99	0.14	-0.93	0.27	0.44
613.00	0.48	68.22	612.98	0.53	-0.12	0.21	0.54
702.00	0.44	53.02	701.98	0.88	0.50	0.14	0.66
792.00	0.66	78.07	791.97	1.19	1.28	0.36	0.71
882.00	0.48	79.47	881.97	1.37	2.16	0.20	0.58
972.00	0.26	11.18	971.97	1.64	2.57	0.50	0.70
1062.00	1.05	294.54	1061.96	2.18	1.86	1.14	1.45
1152.00	0.83	311.42	1151.95	2.95	0.62	0.39	2.59
1242.00	0.66	302.89	1241.94	3.66	-0.31	0.23	3.56
1332.00	1.32	305.26	1331.93	4.54	-1.59	0.73	4.81
1422.00	1.58	326.88	1421.90	6.18	-3.11	0.67	6.86
1512.00	1.76	337.08	1511.86	8.49	-4.33	0.39	9.44
1602.00	1.80	341.39	1601.82	11.11	-5.32	0.16	12.24
1692.00	1.36	342.35	1691.79	13.46	-6.09	0.49	14.72
1782.00	0.62	357.21	1781.77	14.97	-6.44	0.86	16.25
1872.00	0.53	304.12	1871.77	15.69	-6.81	0.58	17.05
1962.00	0.66	97.93	1961.77	15.85	-6.64	1.29	17.15
1981.00	1.10	110.50	1980.76	15.77	-6.36	2.52	16.99
2038.00	1.10	110.50	2037.75	15.39	-5.34	==>	16.29