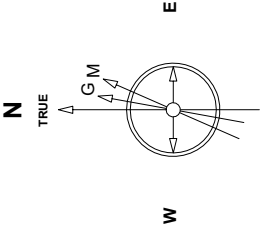


Great Western Operating Company, LLC

Created by	mmount
Date plotted	25-Nov-2020
Plot reference is Tower LD 19-379HN (AWB).	
Ref wellpath is Tower LD 19-379HN (AWP#1).	
Coordinates are in Feet reference S03 - Tower LD 19-379HN.	
True Vertical Depths are reference Rig Datum.	
Measured Depths are reference Rig Datum.	
Rig Datum: Actual Datum #1	
Rig Datum to Mean Sea Level 5244.00 ft.	
Plot North is aligned to TRUE North.	

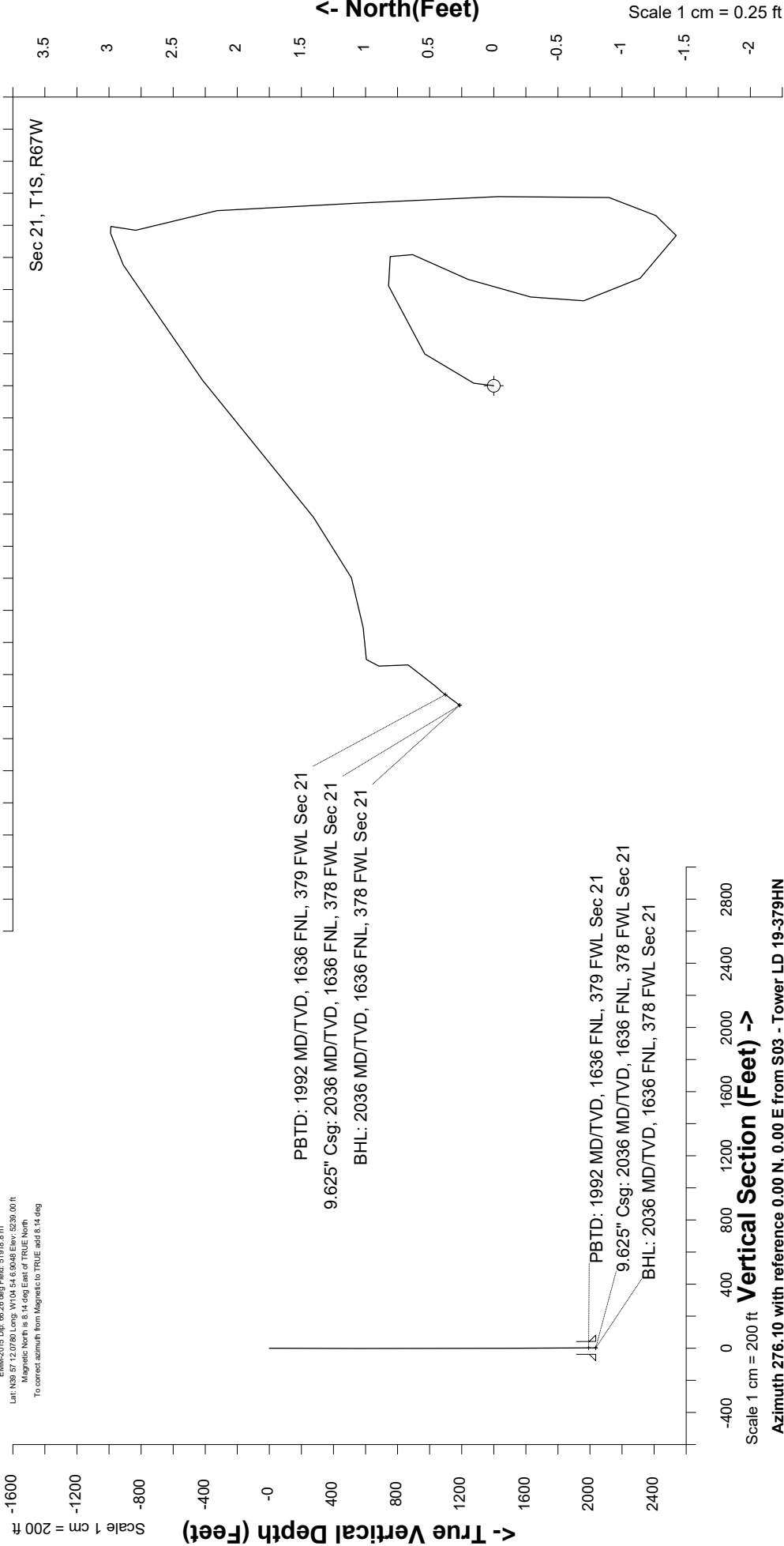
Location	Colorado	Slot	S03 - Tower LD 19-379HN
Field	Wattenburg	Well	Tower LD 19-379HN
Installation	Tower	Wellbore	Tower LD 19-379HN (AWB)



Feb-13-2019  
EMM2015 Dip: 69.26 deg Field: 51918.8 nT  
Lat: N39 57 12.0780 Long: W104 54 6.9048 Elev: 5239.00 ft  
Magnetic North is 8.14 deg East of TRUE North.  
To correct azimuth from Magnetic to TRUE add 8.14 deg

East (Feet) ->

Scale 1 cm = 0.25 ft



Vertical Section (Feet) ->

Scale 1 cm = 200 ft  
Azimuth 276.10 with reference 0.00 N, 0.00 E from S03 - Tower LD 19-379HN

Great Western Operating Co, LLC  
 Directional Survey Report  
 Wellpath: Tower LD 19-379HN  
 MDs and TVDs are from Rig Floor 5244.0ft above Mean Sea Level

**Wellpath Report**

MD[ft]	Inc[deg]	Azi[deg]	TVD[ft]	North[ft]	East[ft]	DLS [deg/100ft]	Vertical Section[ft]
0.00	0.00	0.00	0.00	0.00	0.00		0.00
82.00	0.22	7.33	82.00	0.16	0.02	0.27	0.00
168.00	0.40	43.55	168.00	0.54	0.25	0.30	-0.19
254.00	0.44	78.53	254.00	0.82	0.78	0.30	-0.69
343.00	0.35	199.73	343.00	0.63	1.02	0.77	-0.95
432.00	0.26	209.83	431.99	0.20	0.83	0.12	-0.80
522.00	0.40	186.63	521.99	-0.29	0.69	0.21	-0.72
612.00	0.13	176.08	611.99	-0.70	0.66	0.30	-0.73
702.00	0.48	153.41	701.99	-1.14	0.84	0.40	-0.95
792.00	0.22	71.32	791.99	-1.42	1.17	0.56	-1.31
882.00	0.62	15.81	881.99	-0.90	1.47	0.59	-1.55
972.00	0.53	342.46	971.98	-0.03	1.47	0.38	-1.47
1062.00	0.83	6.81	1061.98	1.01	1.43	0.46	-1.31
1152.00	0.66	344.48	1151.97	2.16	1.36	0.37	-1.13
1241.00	0.18	353.62	1240.97	2.79	1.21	0.54	-0.91
1331.00	0.09	39.85	1330.97	2.99	1.24	0.15	-0.92
1421.00	0.48	246.31	1420.96	2.89	0.94	0.62	-0.63
1511.00	0.92	229.87	1510.96	2.27	0.04	0.53	0.20
1601.00	0.83	232.25	1600.95	1.41	-1.02	0.11	1.17
1691.00	0.44	271.89	1690.94	1.02	-1.88	0.63	1.98
1781.00	0.18	160.97	1780.94	0.90	-2.18	0.59	2.27
1871.00	0.13	201.31	1870.94	0.67	-2.18	0.13	2.23
1961.00	0.22	227.32	1960.94	0.46	-2.34	0.13	2.37
1981.00	0.18	216.78	1980.94	0.40	-2.39	0.27	2.42
2036.00	0.18	216.78	2035.94	0.27	-2.49	==>	2.50