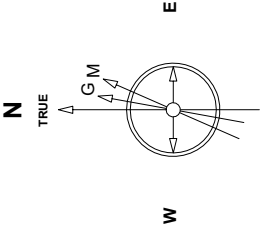


Great Western Operating Company, LLC

Created by	mmount
Date plotted	25-Nov-2020
Plot reference is Tower LD 19-379HC (AWB).	
Ref wellpath is Tower LD 19-379HC (AWP#1).	
Coordinates are in Feet reference S04 - Tower LD 19-379HC.	
True Vertical Depths are reference Rig Datum.	
Measured Depths are reference Rig Datum.	
Rig Datum: Actual Datum #1	
Rig Datum to Mean Sea Level 5244.00 ft.	
Plot North is aligned to TRUE North.	

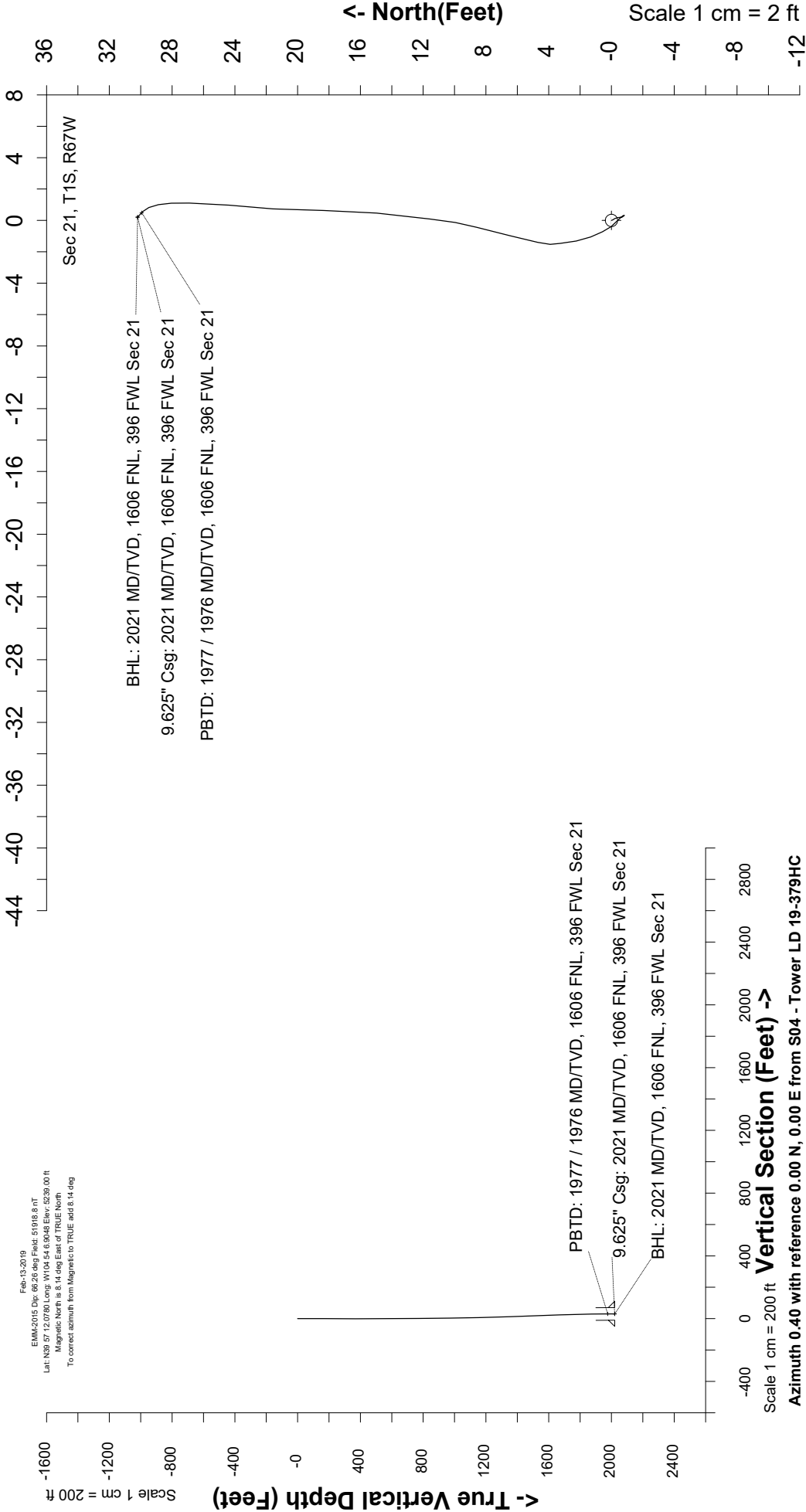
Location	Colorado	Slot	S04 - Tower LD 19-379HC
Field	Wattenburg	Well	Tower LD 19-379HC
Installation	Tower	Wellbore	Tower LD 19-379HC (AWB)



Feb-13-2019
EMM2015 Dip: 68.26 deg Field: 51918.8 nT
Lat: N39 57 12.0760 Long: W104 54 6.9048 Elev: 5239.00 ft
Magnetic North is 8.14 deg East of TRUE North.
To correct azimuth from Magnetic to TRUE add 8.14 deg

Scale 1 cm = 2 ft

East (Feet) ->



Scale 1 cm = 200 ft

Vertical Section (Feet) ->

Azimuth 0.40 with reference 0.00 N, 0.00 E from S04 - Tower LD 19-379HC

Great Western Operating Co, LLC
 Directional Survey Report
 Wellpath: Tower LD 19-379HC
 MDs and TVDs are from Rig Floor 5244.0ft above Mean Sea Level

Wellpath Report

MD[ft]	Inc[deg]	Azi[deg]	TVD[ft]	North[ft]	East[ft]	DLS [deg/100ft]	Vertical Section[ft]
0.00	0.00	0.00	0.00	0.00	0.00		0.00
82.00	0.13	159.65	82.00	-0.09	0.03	0.16	-0.09
168.00	0.09	123.35	168.00	-0.22	0.12	0.09	-0.21
254.00	0.18	180.83	254.00	-0.39	0.18	0.18	-0.39
343.00	0.22	166.50	343.00	-0.69	0.22	0.07	-0.69
432.00	0.09	62.18	432.00	-0.83	0.32	0.29	-0.83
522.00	0.48	315.92	522.00	-0.52	0.12	0.57	-0.52
612.00	0.48	317.41	611.99	0.02	-0.40	==>	0.02
702.00	0.35	346.42	701.99	0.57	-0.72	0.27	0.56
792.00	0.70	330.68	791.99	1.32	-1.05	0.42	1.31
882.00	0.57	1.09	881.98	2.24	-1.31	0.40	2.23
972.00	0.75	344.40	971.98	3.26	-1.46	0.29	3.25
1062.00	1.14	14.54	1061.97	4.69	-1.40	0.69	4.68
1152.00	1.19	12.08	1151.95	6.47	-0.98	0.08	6.47
1241.00	1.63	15.95	1240.92	8.59	-0.44	0.51	8.59
1331.00	2.24	5.66	1330.87	11.57	0.09	0.78	11.57
1421.00	2.11	7.16	1420.80	14.97	0.47	0.16	14.97
1511.00	2.20	358.46	1510.74	18.34	0.63	0.38	18.34
1601.00	1.93	5.66	1600.68	21.57	0.73	0.42	21.58
1691.00	1.63	4.08	1690.64	24.36	0.97	0.34	24.37
1781.00	1.63	1.71	1780.60	26.92	1.10	0.07	26.92
1871.00	0.88	348.88	1870.58	28.87	1.01	0.88	28.88
1966.00	0.50	312.84	1965.57	29.87	0.56	0.59	29.87
2021.00	0.50	312.84	2020.57	30.20	0.21	==>	30.20