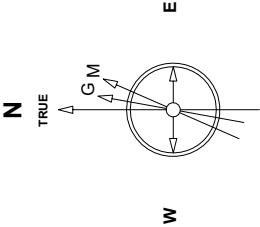


Great Western Operating Company, LLC

Created by	mmount
Date plotted	25-Nov-2020
Plot reference is Tower LD 19-342HNX (AWB).	
Ref wellpath is Tower LD 19-342HNX (AWPH1).	
Coordinates are in Feet reference S05 - Tower LD 19-342HNX.	
True Vertical Depths are reference Rig Datum.	
Measured Depths are reference Rig Datum.	
Rig Datum: Actual Datum #1	
Rig Datum to Mean Sea Level: 5244.00 ft	
Plot North is aligned to TRUE North.	

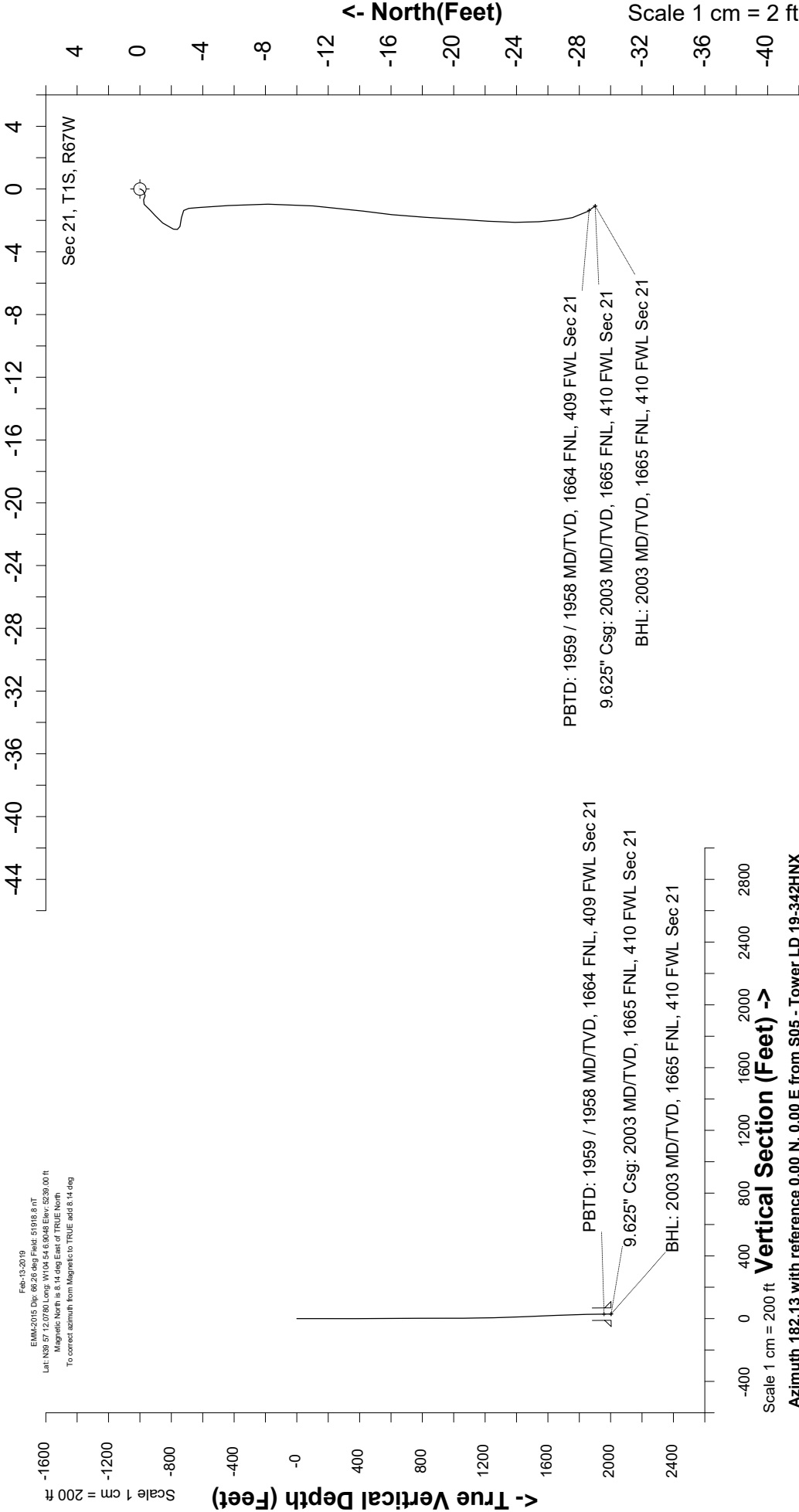
Location	Colorado	Slot	S05 - Tower LD 19-342HNX
Field	Wattensburg	Well	Tower LD 19-342HNX
Installation	Tower	Wellbore	Tower LD 19-342HNX (AWB)



Feb-13-2019
EMM2015 Dip: 68.26 deg Field: 51918.8 nT
Lat: N39 57 12.0780 Long: W104 54 6.9048 Elev: 5239.00 ft
Magnetic North is 8.14 deg East of TRUE North.
To correct azimuth from Magnetic to TRUE add 8.14 deg

Scale 1 cm = 2 ft

East (Feet) ->



Vertical Section (Feet) ->

Scale 1 cm = 200 ft

Azimuth 182.13 with reference 0.00 N, 0.00 E from S05 - Tower LD 19-342HNX

Great Western Operating Co, LLC
 Directional Survey Report
 Wellpath: Tower LD 19-342HNX
 MDs and TVDs are from Rig Floor 5244.0ft above Mean Sea Level

Wellpath Report

MD[ft]	Inc[deg]	Azi[deg]	TVD[ft]	North[ft]	East[ft]	DLS [deg/100ft]	Vertical Section[ft]
0.00	0.00	0.00	0.00	0.00	0.00		0.00
82.00	0.09	189.27	82.00	-0.06	-0.01	0.11	0.06
168.00	0.18	228.91	168.00	-0.22	-0.12	0.14	0.22
254.00	0.26	262.66	254.00	-0.33	-0.42	0.17	0.35
343.00	0.18	331.30	343.00	-0.24	-0.69	0.29	0.26
432.00	0.35	235.41	432.00	-0.27	-0.98	0.46	0.30
522.00	0.35	213.35	522.00	-0.65	-1.35	0.15	0.70
612.00	0.26	245.25	612.00	-0.97	-1.69	0.21	1.03
702.00	0.62	215.72	701.99	-1.45	-2.16	0.46	1.53
792.00	0.40	201.31	791.99	-2.14	-2.56	0.28	2.23
882.00	0.40	113.07	881.99	-2.55	-2.38	0.62	2.64
972.00	0.35	84.50	971.99	-2.65	-1.82	0.21	2.72
1062.00	0.31	132.67	1061.98	-2.79	-1.37	0.30	2.84
1152.00	1.01	178.90	1151.98	-3.75	-1.17	0.92	3.79
1241.00	1.45	174.41	1240.96	-5.65	-1.05	0.51	5.69
1331.00	1.76	181.18	1330.92	-8.17	-0.97	0.40	8.20
1421.00	1.89	183.03	1420.88	-11.03	-1.07	0.16	11.06
1511.00	2.20	188.57	1510.82	-14.22	-1.41	0.41	14.26
1601.00	2.86	183.32	1600.73	-18.17	-1.80	0.78	18.22
1691.00	2.29	183.99	1690.64	-22.21	-2.05	0.63	22.27
1781.00	1.80	176.35	1780.58	-25.41	-2.09	0.62	25.47
1871.00	0.97	166.77	1870.56	-27.56	-1.82	0.95	27.61
1948.00	0.62	144.09	1947.55	-28.53	-1.43	0.60	28.57
2003.00	0.62	144.09	2002.54	-29.02	-1.08	==>	29.04