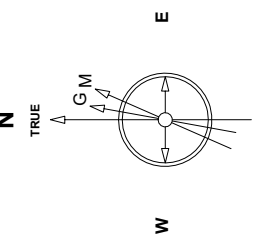


# Great Western Operating Company, LLC

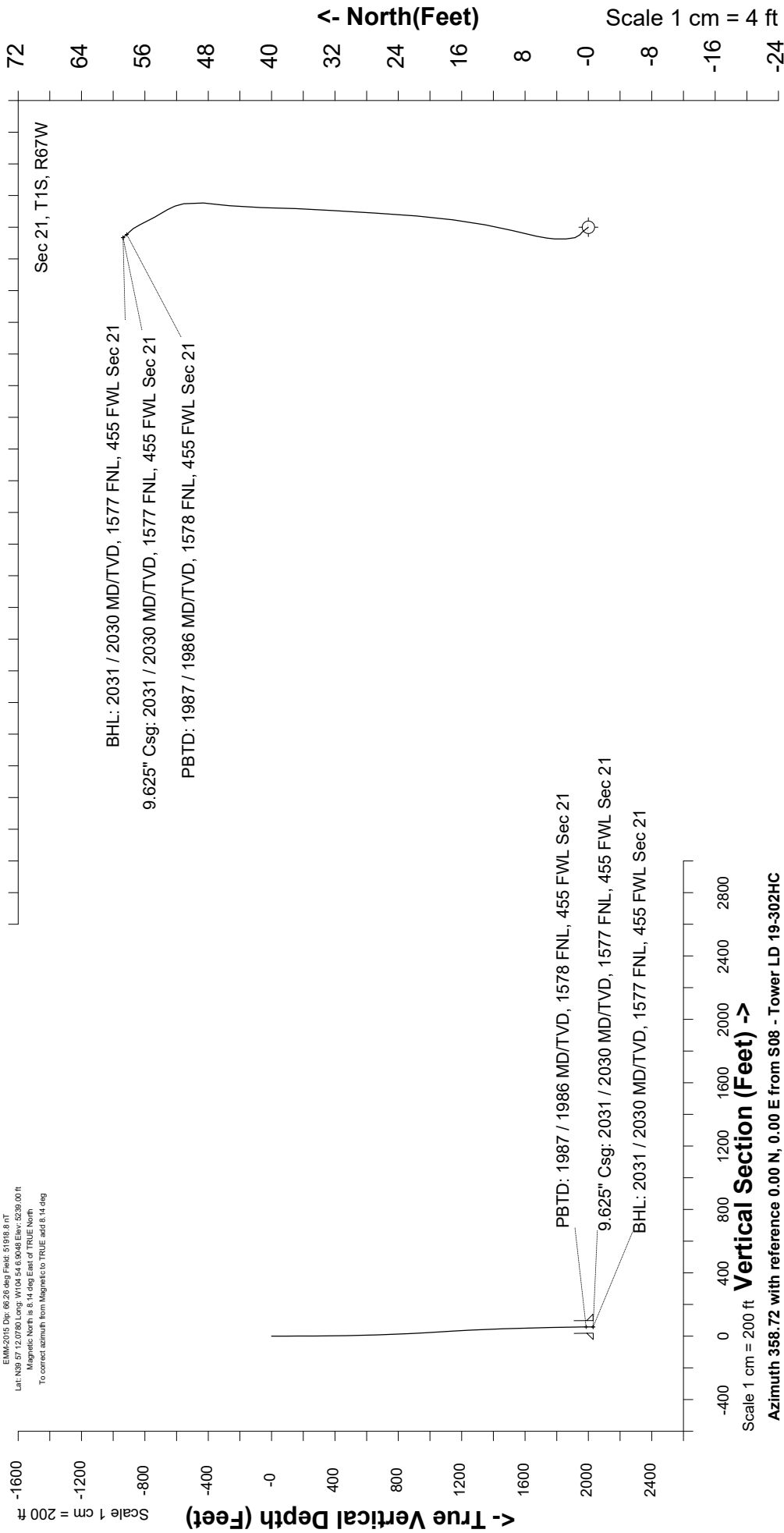
<b>Location</b>	Colorado	<b>Slot</b>	S08 - Tower LD 19-302HC
<b>Field</b>	Wattenburg	<b>Well</b>	Tower LD 19-302HC
<b>Installation</b>	Tower	<b>Wellbore</b>	Tower LD 19-302HC (AWB)

Scale 1 cm = 4 ft      East (Feet) ->

Created by: mmount  
 Date plotted: 25-Nov-2020  
 Plot reference is Tower LD 19-302HC (AWB)  
 Ref wellpath is Tower LD 19-302HC (AWP#1).  
 Coordinates are in Feet reference S08 - Tower LD 19-302HC.  
 True Vertical Depths are reference Rig Datum.  
 Measured Depths are reference Rig Datum.  
 Rig Datum: Actual Datum #1  
 Rig Datum to Mean Sea Level: 5244.00 ft.  
 Plot North is aligned to TRUE North.



Feb-13-2019  
 EMM2015 Dip: 66.26 deg Field: 51918.8 FT  
 Lat: N39 57 12.0780 Long: W104 54 6.9048 Elev: 5239.00 ft  
 Magnetic North is 8.14 deg East of TRUE North.  
 To correct azimuth from Magnetic to TRUE add 8.14 deg



Scale 1 cm = 4 ft

Scale 1 cm = 200 ft  
 Vertical Section (Feet) ->  
 Azimuth 358.72 with reference 0.00 N, 0.00 E from S08 - Tower LD 19-302HC

Great Western Operating Co, LLC  
 Directional Survey Report  
 Wellpath: Tower LD 19-302HC  
 MDs and TVDs are from Rig Floor 5244.0ft above Mean Sea Level

**Wellpath Report**

MD[ft]	Inc[deg]	Azi[deg]	TVD[ft]	North[ft]	East[ft]	DLS [deg/100ft]	Vertical Section[ft]
0.00	0.00	0.00	0.00	0.00	0.00	0.00	0.00
82.00	0.53	323.21	82.00	0.30	-0.23	0.65	0.31
168.00	0.31	317.59	168.00	0.79	-0.62	0.26	0.81
254.00	0.31	302.56	254.00	1.09	-0.98	0.09	1.11
343.00	0.66	344.40	342.99	1.71	-1.32	0.54	1.74
432.00	0.79	357.93	431.99	2.82	-1.48	0.24	2.85
522.00	1.05	1.80	521.97	4.27	-1.47	0.30	4.30
612.00	1.93	11.99	611.94	6.57	-1.13	1.02	6.60
702.00	2.02	14.28	701.89	9.59	-0.43	0.13	9.60
792.00	2.46	10.15	791.82	13.03	0.31	0.52	13.02
882.00	2.77	7.51	881.73	17.09	0.93	0.37	17.06
972.00	3.12	4.79	971.61	21.68	1.42	0.42	21.65
1062.00	3.52	3.29	1061.46	26.88	1.78	0.45	26.84
1152.00	3.21	3.64	1151.30	32.16	2.10	0.35	32.10
1241.00	2.90	2.32	1240.17	36.89	2.35	0.36	36.83
1331.00	2.64	0.92	1330.07	41.24	2.48	0.30	41.17
1421.00	2.55	5.84	1419.98	45.30	2.71	0.27	45.23
1511.00	1.67	6.10	1509.91	48.60	3.06	0.98	48.52
1601.00	1.54	349.23	1599.88	51.09	2.97	0.54	51.01
1691.00	1.27	328.31	1689.85	53.13	2.22	0.64	53.07
1781.00	1.19	331.21	1779.83	54.80	1.25	0.11	54.76
1871.00	1.41	334.29	1869.81	56.61	0.31	0.26	56.59
1961.00	0.83	309.85	1959.79	58.03	-0.67	0.82	58.03
1976.00	0.79	319.26	1974.79	58.18	-0.82	0.92	58.18
2031.00	0.79	319.26	2029.79	58.75	-1.31	==>	58.77