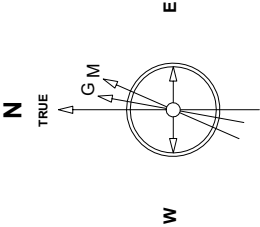


Great Western Operating Company, LLC

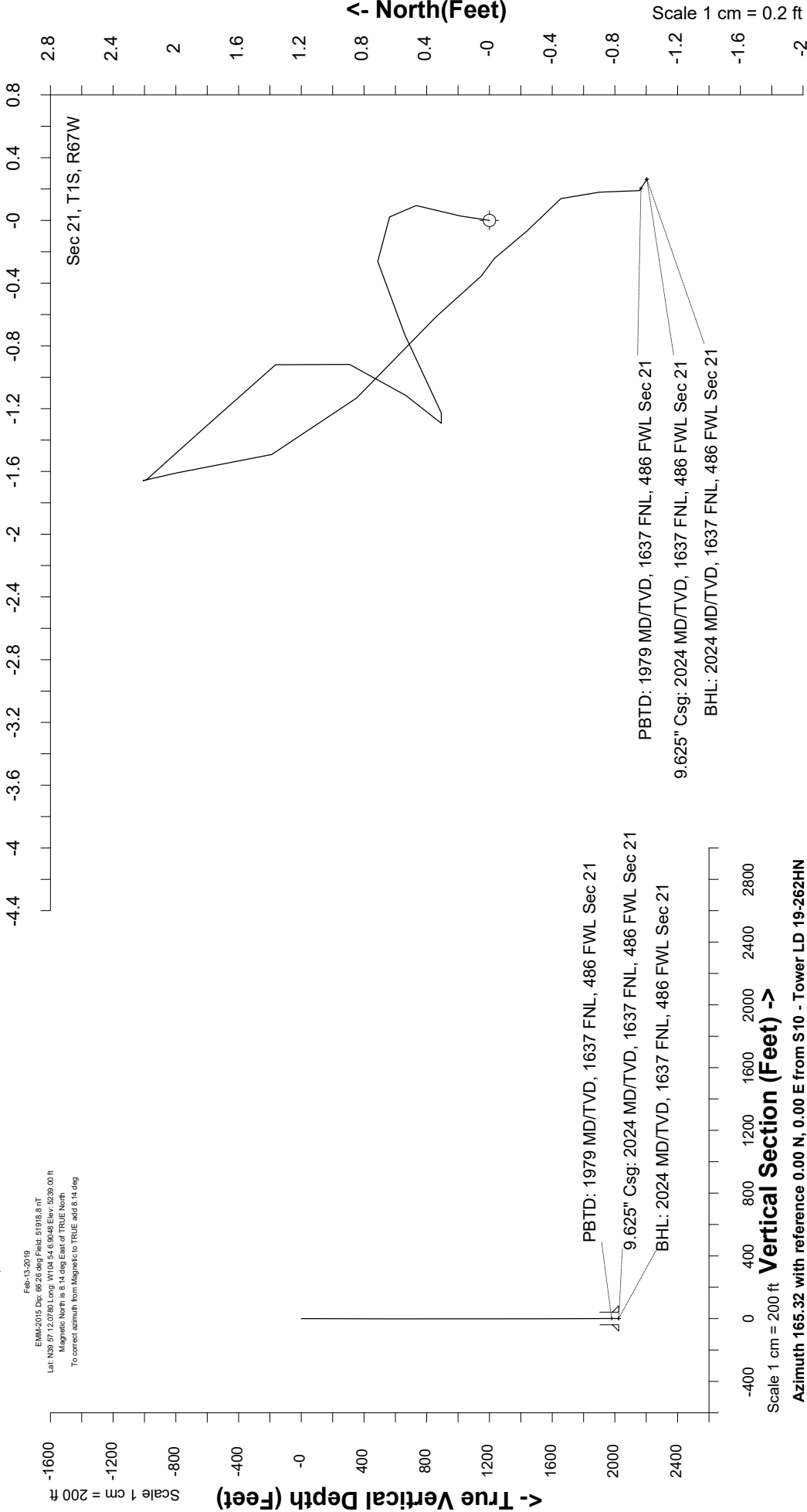
Created by	mmount
Date plotted	25-Nov-2020
Plot reference is Tower LD 19-262HN (AWB).	
Ref wellpath is Tower LD 19-262HN (AWP#1).	
Coordinates are in Feet reference S10 - Tower LD 19-262HN.	
True Vertical Depths are reference Rig Datum.	
Measured Depths are reference Rig Datum.	
Rig Datum: Actual Datum #1	
Rig Datum to Mean Sea Level 5244.00 ft.	
Plot North is aligned to TRUE North.	

Location	Colorado	Slot	S10 - Tower LD 19-262HN
Field	Wattenburg	Well	Tower LD 19-262HN
Installation	Tower	Wellbore	Tower LD 19-262HN (AWB)



Scale 1 cm = 0.2 ft

East (Feet) ->



Scale 1 cm = 200 ft

Vertical Section (Feet) ->

Azimuth 165.32 with reference 0.00 N, 0.00 E from S10 - Tower LD 19-262HN

Great Western Operating Co, LLC
 Directional Survey Report
 Wellpath: Tower LD 19-262HN
 MDs and TVDs are from Rig Floor 5244.0ft above Mean Sea Level

Wellpath Report

MD[ft]	Inc[deg]	Azi[deg]	TVD[ft]	North[ft]	East[ft]	DLS [deg/100ft]	Vertical Section[ft]
0.00	0.00	0.00	0.00	0.00	0.00		0.00
82.00	0.26	8.65	82.00	0.18	0.03	0.32	-0.17
168.00	0.13	22.45	168.00	0.47	0.09	0.16	-0.43
254.00	0.18	305.99	254.00	0.64	0.02	0.23	-0.61
343.00	0.22	267.75	343.00	0.71	-0.26	0.15	-0.75
432.00	0.44	240.86	432.00	0.54	-0.73	0.30	-0.71
522.00	0.26	252.02	522.00	0.31	-1.23	0.21	-0.61
612.00	0.18	64.02	612.00	0.31	-1.29	0.49	-0.62
702.00	0.22	17.18	701.99	0.53	-1.12	0.18	-0.80
792.00	0.31	37.04	791.99	0.89	-0.92	0.14	-1.10
882.00	0.40	331.74	881.99	1.36	-0.92	0.43	-1.55
972.00	0.44	306.43	971.99	1.85	-1.35	0.21	-2.13
1062.00	0.18	347.82	1061.99	2.19	-1.65	0.36	-2.54
1152.00	0.44	167.38	1151.99	1.99	-1.61	0.69	-2.33
1241.00	0.35	171.07	1240.99	1.39	-1.49	0.11	-1.72
1331.00	0.53	130.29	1330.98	0.85	-1.13	0.39	-1.11
1421.00	0.40	139.87	1420.98	0.34	-0.61	0.17	-0.48
1511.00	0.09	129.50	1510.98	0.05	-0.35	0.35	-0.14
1601.00	0.09	124.41	1600.98	-0.03	-0.24	==>	-0.03
1691.00	0.26	145.32	1690.98	-0.24	-0.07	0.20	0.21
1781.00	0.13	117.64	1780.98	-0.46	0.14	0.17	0.48
1871.00	0.26	194.19	1870.98	-0.70	0.18	0.29	0.72
1969.00	0.09	122.38	1968.98	-0.96	0.19	0.25	0.97
2024.00	0.09	122.38	2023.98	-1.00	0.26	==>	1.04