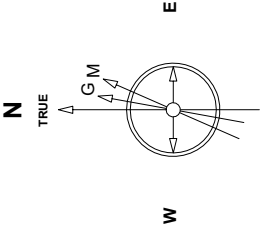


Great Western Operating Company, LLC

Created by	mmount
Date plotted	25-Nov-2020
Plot reference is Tower LD 19-259HN (AWB).	
Ref wellpath is Tower LD 19-259HN (AWP#1).	
Coordinates are in Feet reference S11 - Tower LD 19-259HN.	
True Vertical Depths are reference Rig Datum.	
Measured Depths are reference Rig Datum.	
Rig Datum: Actual Datum #1	
Rig Datum to Mean Sea Level 5244.00 ft.	
Plot North is aligned to TRUE North.	

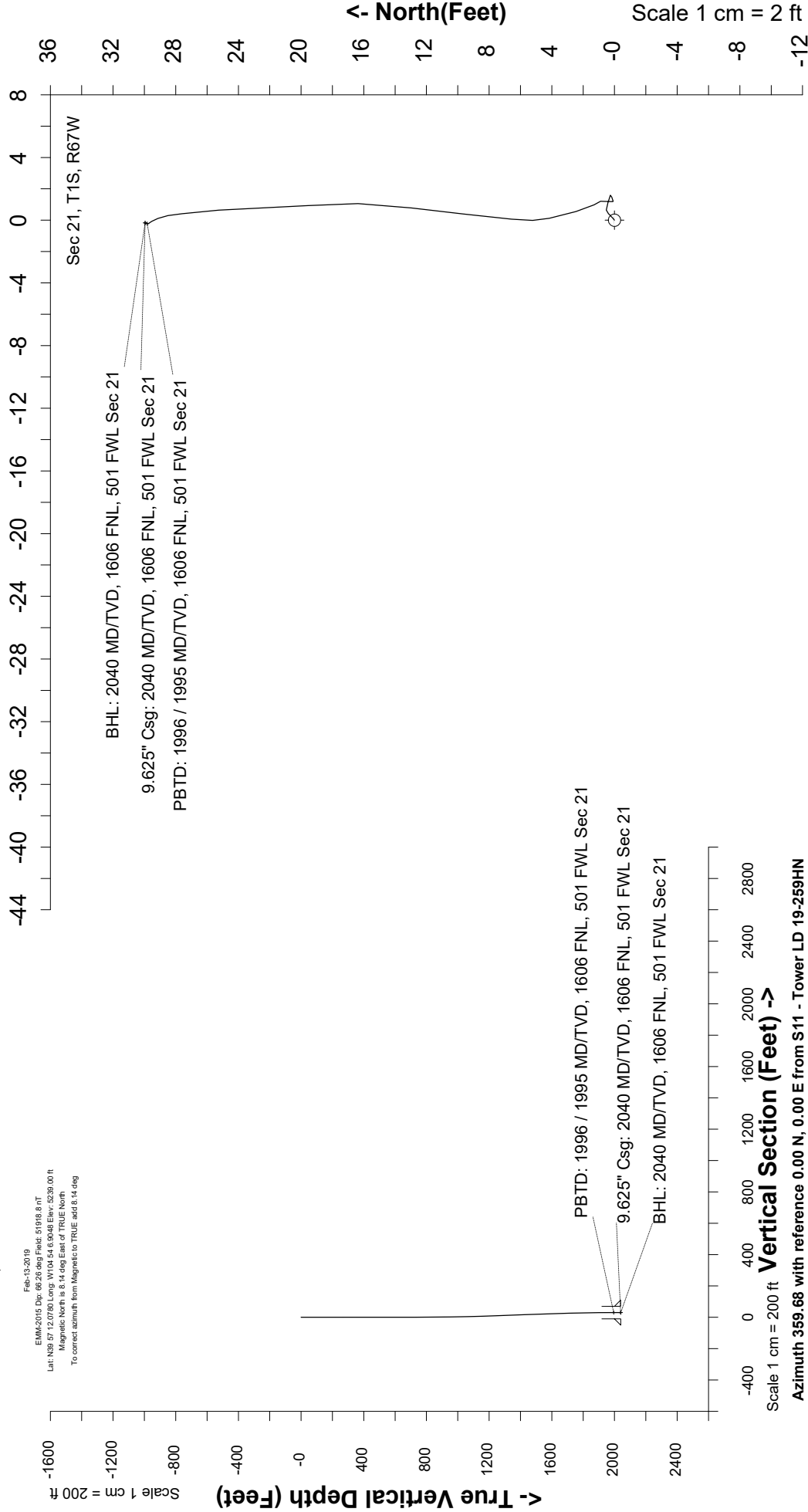
Location	Colorado	Slot	S11 - Tower LD 19-259HN
Field	Wattenburg	Well	Tower LD 19-259HN
Installation	Tower	Wellbore	Tower LD 19-259HN (AWB)



Feb-13-2019
EMM2015 Dip: 68.26 deg Field: 51918.8 nT
Lat: N39 57 12.0760 Long: W104 54 6.9048 Elev: 5239.00 ft
Magnetic North is 8.14 deg East of TRUE North.
To correct azimuth from Magnetic to TRUE add 8.14 deg

Scale 1 cm = 2 ft

East (Feet) ->



Scale 1 cm = 200 ft

Vertical Section (Feet) ->

Azimuth 359.68 with reference 0.00 N, 0.00 E from S11 - Tower LD 19-259HN

Great Western Operating Co, LLC
 Directional Survey Report
 Wellpath: Tower LD 19-259HN
 MDs and TVDs are from Rig Floor 5244.0ft above Mean Sea Level

Wellpath Report

MD[ft]	Inc[deg]	Azi[deg]	TVD[ft]	North[ft]	East[ft]	DLS [deg/100ft]	Vertical Section[ft]
0.00	0.00	0.00	0.00	0.00	0.00		0.00
82.00	0.26	50.66	82.00	0.12	0.14	0.32	0.12
168.00	0.26	40.65	168.00	0.39	0.42	0.05	0.39
254.00	0.13	97.95	254.00	0.52	0.65	0.25	0.52
343.00	0.48	104.28	343.00	0.42	1.11	0.39	0.41
432.00	0.18	117.20	432.00	0.26	1.59	0.35	0.25
522.00	0.31	264.15	522.00	0.17	1.48	0.52	0.16
612.00	0.09	206.49	611.99	0.08	1.20	0.30	0.08
702.00	0.53	2.94	701.99	0.44	1.19	0.68	0.43
792.00	0.04	350.28	791.99	0.88	1.21	0.55	0.88
882.00	0.57	329.63	881.99	1.30	0.98	0.59	1.30
972.00	1.01	345.89	971.98	2.46	0.56	0.54	2.45
1062.00	1.23	345.27	1061.96	4.16	0.12	0.24	4.16
1152.00	1.89	7.60	1151.93	6.57	0.07	0.98	6.57
1241.00	2.11	4.61	1240.88	9.65	0.39	0.27	9.65
1331.00	2.15	8.57	1330.82	12.97	0.78	0.17	12.97
1421.00	2.20	0.92	1420.75	16.37	1.06	0.33	16.36
1511.00	1.85	353.80	1510.69	19.54	0.93	0.48	19.54
1601.00	1.89	0.30	1600.65	22.47	0.78	0.24	22.47
1691.00	1.67	353.54	1690.60	25.26	0.64	0.34	25.25
1781.00	1.32	355.38	1780.57	27.59	0.41	0.39	27.59
1871.00	0.70	336.84	1870.56	29.13	0.11	0.77	29.13
1961.00	0.18	310.65	1960.56	29.73	-0.21	0.60	29.73
1985.00	0.18	20.78	1984.56	29.79	-0.23	0.86	29.79
2040.00	0.18	20.78	2039.55	29.95	-0.17	==>	29.95