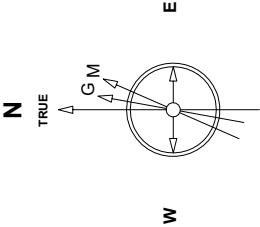


Great Western Operating Company, LLC

Created by	mmount
Date plotted	25-Nov-2020
Plot reference is Tower LD 19-219HN (AWB).	
Ref wellpath is Tower LD 19-219HN (AWP#1).	
Coordinates are in Feet reference S15 - Tower LD 19-219HN.	
True Vertical Depths are reference Rig Datum.	
Measured Depths are reference Rig Datum.	
Rig Datum: Actual Datum #1	
Rig Datum to Mean Sea Level 5244.00 ft.	
Plot North is aligned to TRUE North.	

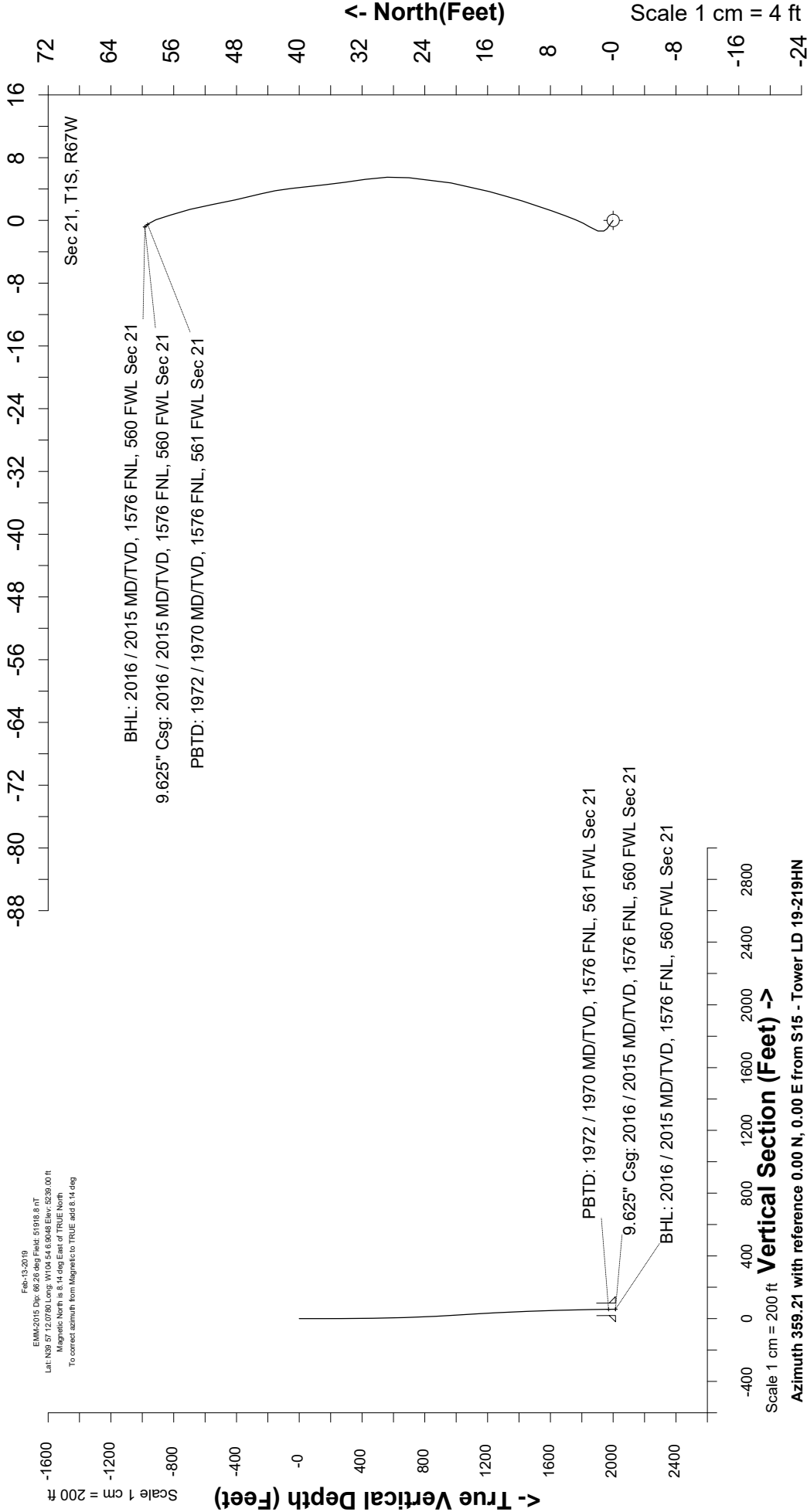
Location	Colorado	Slot	S15 - Tower LD 19-219HN
Field	Wattenburg	Well	Tower LD 19-219HN
Installation	Tower	Wellbore	Tower LD 19-219HN (AWB)



Feb-13-2019
EMM2015 Dip: 69.26 deg Field: 51918.8 nT
Lat: N39 57 12.0760 Long: W104 54 6.9048 Elev: 5239.00 ft
Magnetic North is 8.14 deg East of TRUE North.
To correct azimuth from Magnetic to TRUE add 8.14 deg

Scale 1 cm = 4 ft

East (Feet) ->



Vertical Section (Feet) ->

Scale 1 cm = 200 ft

Azimuth 359.21 with reference 0.00 N, 0.00 E from S15 - Tower LD 19-219HN

Great Western Operating Co, LLC
 Directional Survey Report
 Wellpath: Tower LD 19-219HN
 MDs and TVDs are from Rig Floor 5244.0ft above Mean Sea Level

Wellpath Report

MD[ft]	Inc[deg]	Azi[deg]	TVD[ft]	North[ft]	East[ft]	DLS [deg/100ft]	Vertical Section[ft]
0.00	0.00	0.00	0.00	0.00	0.00		0.00
82.00	0.31	310.29	82.00	0.14	-0.17	0.38	0.15
168.00	0.44	303.44	168.00	0.48	-0.62	0.16	0.48
254.00	0.26	309.50	254.00	0.78	-1.05	0.21	0.80
343.00	0.40	331.21	342.99	1.18	-1.35	0.21	1.20
432.00	0.66	16.74	431.99	1.95	-1.36	0.53	1.96
522.00	0.97	33.97	521.98	3.07	-0.78	0.44	3.08
612.00	1.49	21.75	611.96	4.79	0.08	0.64	4.79
702.00	2.64	19.99	701.90	7.83	1.22	1.28	7.81
792.00	2.42	16.83	791.81	11.59	2.48	0.29	11.56
882.00	3.12	15.24	881.71	15.78	3.67	0.78	15.72
972.00	3.30	10.24	971.57	20.69	4.78	0.37	20.62
1062.00	3.56	4.26	1061.41	26.02	5.45	0.49	25.95
1152.00	3.56	351.43	1151.23	31.57	5.24	0.88	31.50
1241.00	2.99	353.36	1240.09	36.61	4.56	0.65	36.54
1331.00	2.68	353.98	1329.98	41.04	4.06	0.35	40.98
1421.00	2.29	345.63	1419.89	44.87	3.40	0.59	44.82
1511.00	1.98	347.91	1509.83	48.13	2.63	0.36	48.09
1601.00	1.85	349.14	1599.78	51.08	2.03	0.15	51.05
1691.00	1.85	345.98	1689.73	53.91	1.40	0.11	53.89
1781.00	1.58	341.58	1779.69	56.50	0.66	0.33	56.49
1871.00	0.79	342.46	1869.67	58.27	0.08	0.88	58.26
1961.00	0.62	318.64	1959.67	59.23	-0.43	0.37	59.23
2016.00	0.62	318.64	2014.66	59.67	-0.82	==>	59.68