

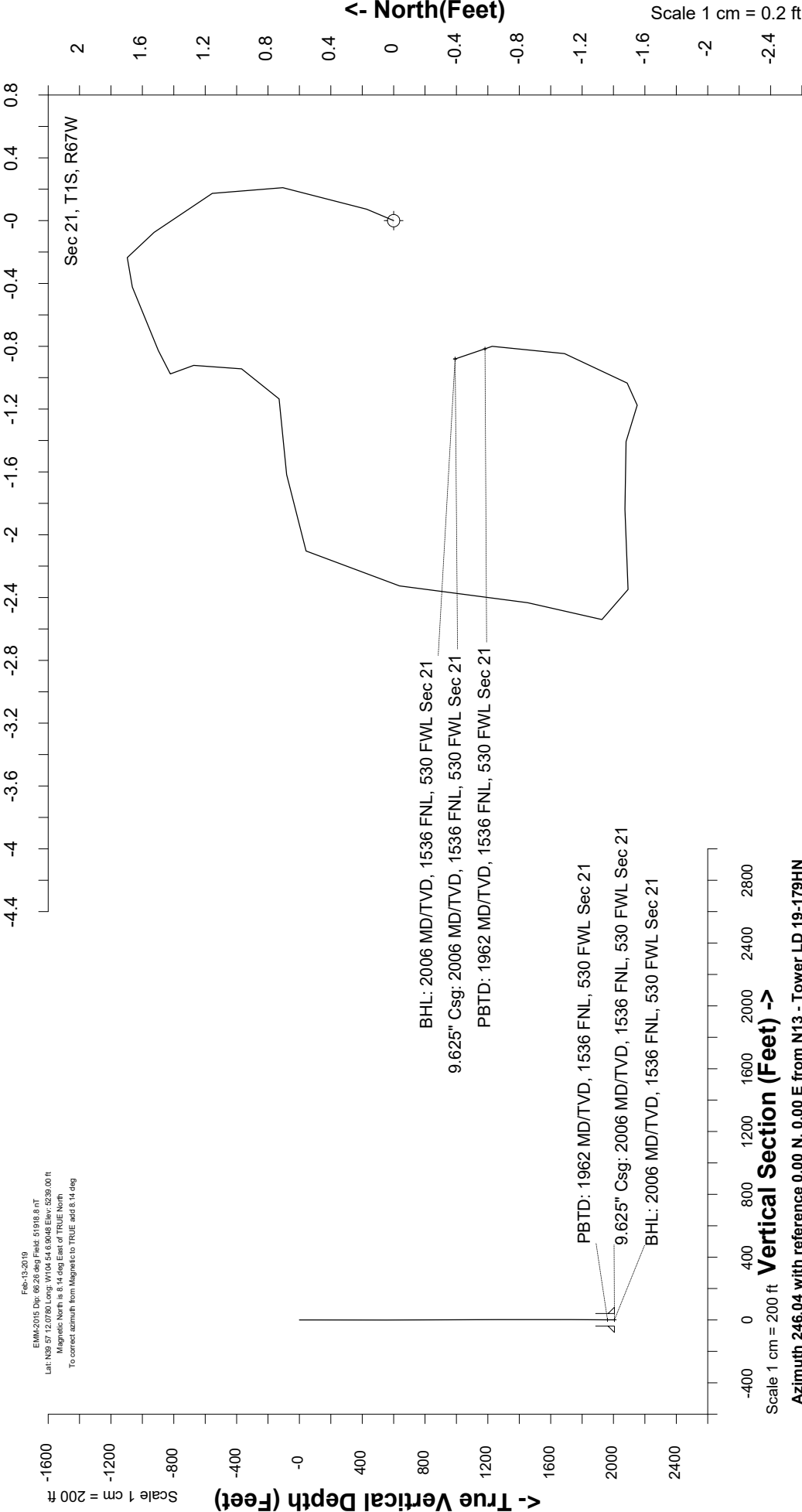
Great Western Operating Company, LLC

Created by	mmount
Date plotted	25-Nov-2020
Plot reference is Tower LD 19-179HN (AWB).	
Ref wellpath is Tower LD 19-179HN (AWP#1).	
Coordinates are in Feet reference N13 - Tower LD 19-179HN.	
True Vertical Depths are reference Rig Datum.	
Measured Depths are reference Rig Datum.	
Rig Datum: Actual Datum #1	
Rig Datum to Mean Sea Level 5244.00 ft.	
Plot North is aligned to TRUE North.	

Location	Colorado	Slot	N13 - Tower LD 19-179HN
Field	Wattenburg	Well	Tower LD 19-179HN
Installation	Tower	Wellbore	Tower LD 19-179HN (AWB)

East (Feet) ->

Scale 1 cm = 0.2 ft



Great Western Operating Co, LLC
 Directional Survey Report
 Wellpath: Tower LD 19-179HN
 MDs and TVDs are from Rig Floor 5244.0ft above Mean Sea Level

Wellpath Report

MD[ft]	Inc[deg]	Azi[deg]	TVD[ft]	North[ft]	East[ft]	DLS [deg/100ft]	Vertical Section[ft]
0.00	0.00	0.00	0.00	0.00	0.00		0.00
82.00	0.26	23.07	82.00	0.17	0.07	0.32	-0.14
168.00	0.48	9.71	168.00	0.71	0.21	0.27	-0.48
254.00	0.18	313.99	254.00	1.15	0.17	0.47	-0.63
343.00	0.40	331.56	343.00	1.52	-0.07	0.26	-0.55
432.00	0.31	236.11	431.99	1.66	-0.42	0.59	-0.29
522.00	0.26	261.60	521.99	1.50	-0.83	0.15	0.15
612.00	0.09	131.26	611.99	1.42	-0.98	0.36	0.31
702.00	0.13	179.60	701.99	1.27	-0.92	0.11	0.33
792.00	0.26	186.28	791.99	0.97	-0.94	0.15	0.47
882.00	0.22	258.09	881.99	0.73	-1.13	0.31	0.74
972.00	0.40	267.67	971.99	0.68	-1.62	0.21	1.20
1062.00	0.26	237.17	1061.99	0.56	-2.10	0.24	1.70
1152.00	0.62	186.02	1151.99	-0.04	-2.33	0.56	2.14
1241.00	0.44	189.53	1240.98	-0.85	-2.43	0.21	2.57
1331.00	0.18	200.69	1330.98	-1.33	-2.54	0.30	2.86
1421.00	0.31	97.95	1420.98	-1.49	-2.35	0.43	2.75
1511.00	0.35	78.79	1510.98	-1.47	-1.84	0.13	2.28
1601.00	0.22	110.69	1600.98	-1.48	-1.41	0.22	1.89
1691.00	0.09	97.95	1690.98	-1.55	-1.18	0.15	1.70
1781.00	0.13	43.72	1780.98	-1.49	-1.03	0.12	1.55
1871.00	0.44	19.90	1870.98	-1.09	-0.85	0.36	1.22
1951.00	0.26	341.23	1950.97	-0.63	-0.80	0.36	0.99
2006.00	0.26	341.23	2005.97	-0.39	-0.88	==>	0.96