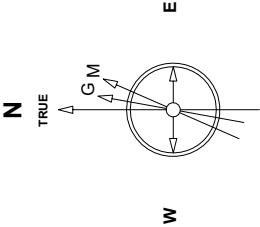


Great Western Operating Company, LLC

Created by	mmount
Date plotted	25-Nov-2020
Plot reference is Tower LD 19-102HNX (AWB).	
Ref wellpath is Tower LD 19-102HNX (AWPH1).	
Coordinates are in Feet reference N09 - Tower LD 19-102HNX.	
True Vertical Depths are reference Rig Datum.	
Measured Depths are reference Rig Datum.	
Rig Datum: Actual Datum #1	
Rig Datum to Mean Sea Level: 5244.00 ft.	
Plot North is aligned to TRUE North.	

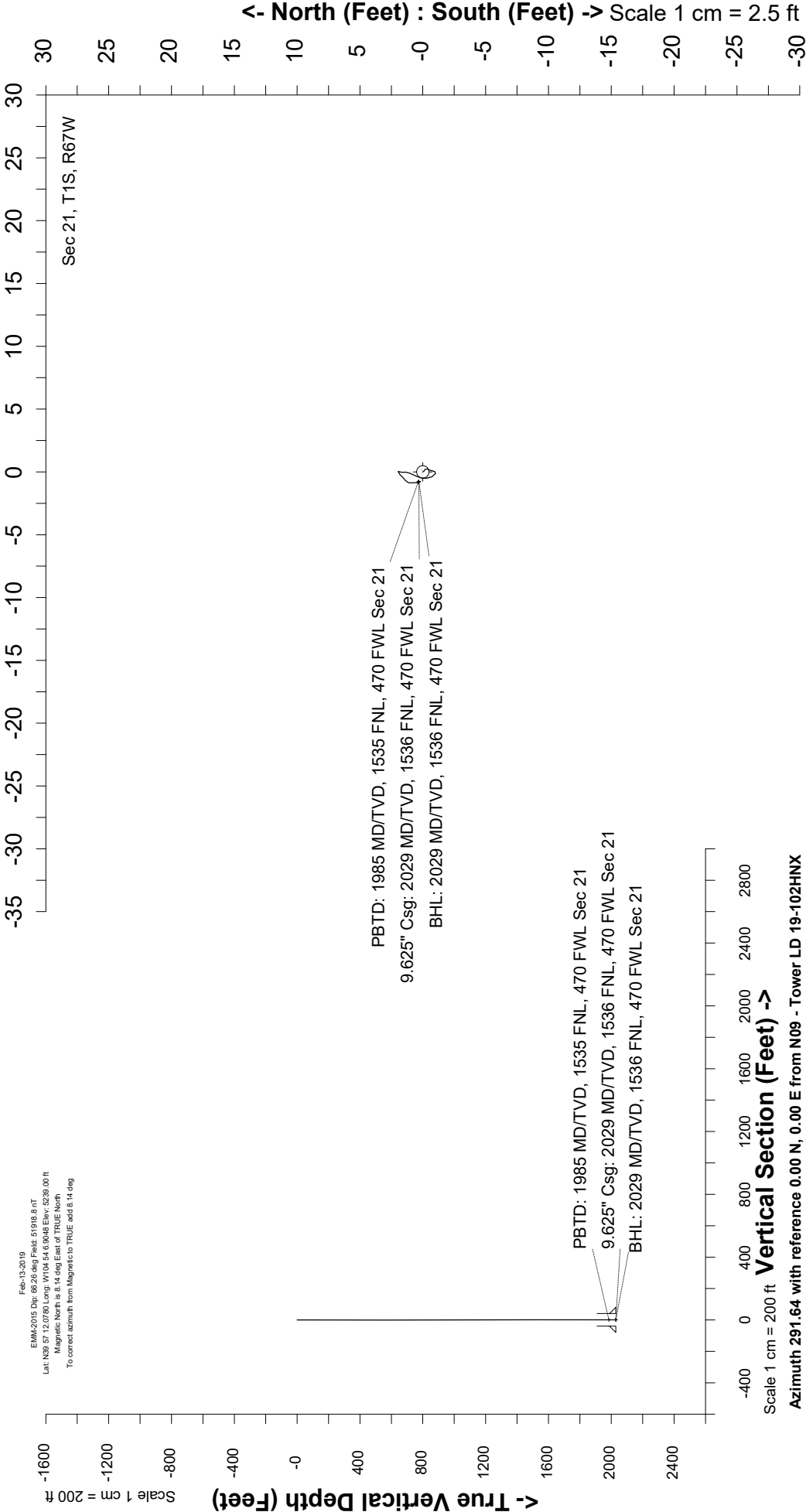
Location	Colorado	Slot	N09 - Tower LD 19-102HNX
Field	Wattenburg	Well	Tower LD 19-102HNX
Installation	Tower	Wellbore	Tower LD 19-102HNX (AWB)



Feb-13-2019  
EMM2015 Dp: 60.26 deg Field: 51918.8 nT  
Lat: N39 57 12.0780 Long: W104 54 6.9048 Elev: 5239.00 ft  
Magnetic North is 8.14 deg East of TRUE North.  
To correct azimuth from Magnetic to TRUE add 8.14 deg

Scale 1 cm = 2.5 ft

East (Feet) ->



Scale 1 cm = 200 ft

Vertical Section (Feet) ->

Azimuth 291.64 with reference 0.00 N, 0.00 E from N09 - Tower LD 19-102HNX

Great Western Operating Co, LLC  
 Directional Survey Report  
 Wellpath: Tower LD 19-102HNX  
 MDs and TVDs are from Rig Floor 5244.0ft above Mean Sea Level

**Wellpath Report**

MD[ft]	Inc[deg]	Azi[deg]	TVD[ft]	North[ft]	East[ft]	DLS [deg/100ft]	Vertical Section[ft]
0.00	0.00	0.00	0.00	0.00	0.00		0.00
82.00	0.13	148.85	82.00	-0.08	0.05	0.16	-0.07
168.00	0.13	97.95	168.00	-0.18	0.20	0.13	-0.25
254.00	0.22	201.66	254.00	-0.34	0.23	0.33	-0.34
343.00	0.18	199.55	343.00	-0.63	0.12	0.05	-0.35
432.00	0.09	184.35	432.00	-0.84	0.07	0.11	-0.37
522.00	0.09	222.49	522.00	-0.96	0.02	0.07	-0.37
612.00	0.13	268.37	612.00	-1.01	-0.13	0.10	-0.25
702.00	0.40	332.27	702.00	-0.74	-0.38	0.40	0.08
792.00	0.26	2.85	792.00	-0.26	-0.52	0.24	0.39
882.00	0.22	8.13	882.00	0.12	-0.48	0.05	0.49
972.00	0.40	26.49	971.99	0.57	-0.32	0.23	0.51
1062.00	0.22	24.21	1061.99	1.01	-0.11	0.20	0.47
1152.00	0.22	4.35	1151.99	1.34	-0.02	0.08	0.52
1241.00	0.22	351.96	1240.99	1.68	-0.04	0.05	0.65
1331.00	0.18	44.16	1330.99	1.95	0.04	0.20	0.68
1421.00	0.22	232.86	1420.99	1.95	0.00	0.44	0.72
1511.00	0.13	247.80	1510.99	1.81	-0.23	0.11	0.88
1601.00	0.26	210.89	1600.99	1.59	-0.43	0.19	0.99
1691.00	0.22	253.34	1690.99	1.37	-0.70	0.20	1.16
1781.00	0.22	175.56	1780.99	1.15	-0.85	0.31	1.22
1871.00	0.18	192.70	1870.99	0.84	-0.87	0.08	1.12
1961.00	0.35	167.56	1960.99	0.43	-0.84	0.22	0.94
1974.00	0.09	146.29	1973.99	0.38	-0.83	2.06	0.91
2029.00	0.09	146.29	2028.99	0.31	-0.78	==>	0.84