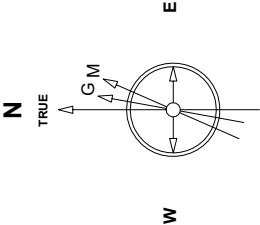


Great Western Operating Company, LLC

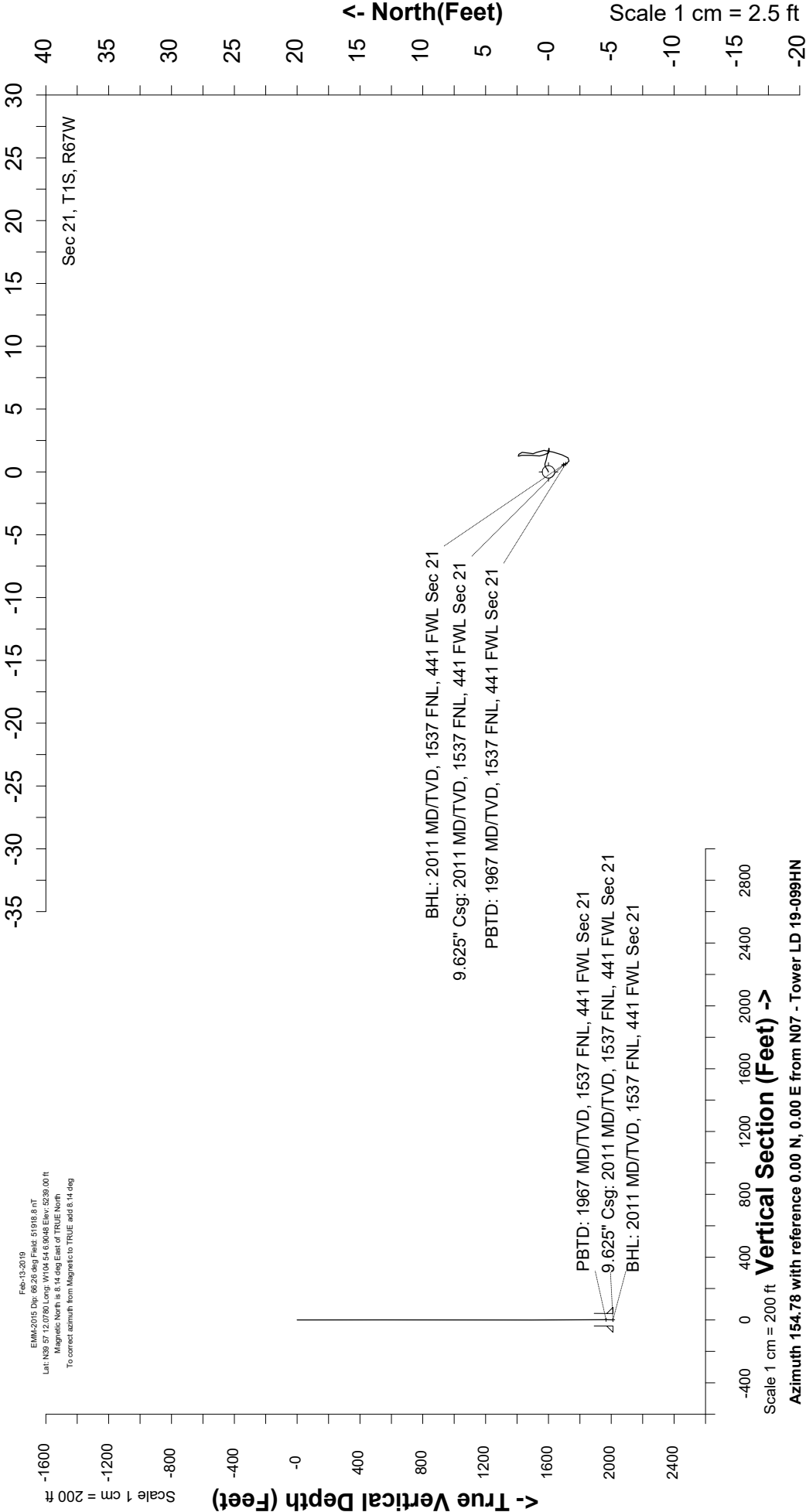
Created by	mmount
Date plotted	25-Nov-2020
Plot reference is Tower LD 19-099HN (AWB).	
Ref wellpath is Tower LD 19-099HN (AWP#1).	
Coordinates are in Feet reference N07 - Tower LD 19-099HN.	
True Vertical Depths are reference Rig Datum.	
Measured Depths are reference Rig Datum.	
Rig Datum: Actual Datum #1	
Rig Datum to Mean Sea Level 5244.00 ft.	
Plot North is aligned to TRUE North.	

Location	Colorado	Slot	N07 - Tower LD 19-099HN
Field	Wattenburg	Well	Tower LD 19-099HN
Installation	Tower	Wellbore	Tower LD 19-099HN (AWB)



Scale 1 cm = 2.5 ft

East (Feet) ->



Scale 1 cm = 200 ft

Vertical Section (Feet) ->

Azimuth 154.78 with reference 0.00 N, 0.00 E from N07 - Tower LD 19-099HN

Great Western Operating Co, LLC
 Directional Survey Report
 Wellpath: Tower LD 19-099HN
 MDs and TVDs are from Rig Floor 5244.0ft above Mean Sea Level

Wellpath Report

MD[ft]	Inc[deg]	Azi[deg]	TVD[ft]	North[ft]	East[ft]	DLS [deg/100ft]	Vertical Section[ft]
0.00	0.00	0.00	0.00	0.00	0.00		0.00
80.00	0.26	63.32	80.00	0.08	0.16	0.32	0.00
168.00	0.18	49.43	168.00	0.26	0.45	0.11	-0.05
251.00	0.13	130.29	251.00	0.28	0.62	0.25	0.00
343.00	0.35	97.95	343.00	0.18	0.97	0.27	0.25
433.00	0.40	106.65	433.00	0.05	1.55	0.08	0.61
522.00	0.04	97.95	522.00	-0.04	1.88	0.41	0.84
612.00	0.31	266.52	611.99	-0.06	1.66	0.39	0.77
702.00	0.13	38.10	701.99	0.00	1.48	0.45	0.63
792.00	0.18	310.47	791.99	0.18	1.44	0.24	0.45
882.00	0.13	15.24	881.99	0.37	1.36	0.19	0.25
972.00	0.35	334.29	971.99	0.71	1.27	0.30	-0.10
1062.00	0.53	24.03	1061.99	1.34	1.32	0.45	-0.65
1152.00	0.57	337.45	1151.99	2.13	1.31	0.48	-1.37
1242.00	0.40	125.20	1241.99	2.37	1.40	1.04	-1.54
1332.00	0.70	196.04	1331.98	1.66	1.50	0.76	-0.86
1422.00	0.35	131.61	1421.98	0.95	1.56	0.70	-0.19
1511.00	0.53	186.19	1510.98	0.36	1.72	0.49	0.41
1601.00	0.44	197.09	1600.97	-0.39	1.57	0.14	1.02
1691.00	0.48	197.35	1690.97	-1.08	1.36	0.04	1.55
1781.00	0.22	226.18	1780.97	-1.56	1.12	0.34	1.89
1871.00	0.18	286.74	1870.97	-1.64	0.86	0.23	1.85
1956.00	0.26	337.28	1955.97	-1.42	0.66	0.24	1.56
2011.00	0.26	337.28	2010.97	-1.19	0.56	==>	1.32