

NEXTIER**Job Summary**

Ticket Number

TN#

BCO-2012-0005

Ticket Date

12/3/2020

COUNTY

COMPANY

API Number

WELD (CO)

ENSIGN

512324817

WELL NAME

RIG

JOB TYPE

DALTON 14-24

Ensign 312

CM-P2A-PERM

SURFACE WELL LOCATION

CJES Field Supervisor

CUSTOMER REP

40.55497 -104.73336

Jeff Kopp

John Schmitt

EMPLOYEES

Winston V

Jeremiah

WELL PROFILE

Max Treating Pressure (psi):

1000

Bottom Hole Static Temperature (°F):

Bottom Hole Circulating Temperature (°F):

Well Type:

Open Hole

1 Size (in) TMD From (ft) TMD to (ft) TVD From (Ft) TVD to (Ft)

2 Size (in) TMD From (ft) TMD to (ft) TVD From (Ft) TVD to (Ft)

Casing/Tubing/Drill Pipe

Type	Size (in)	Weight (lb/ft)	Grade	TMD From (ft)	TMD to (ft)	TVD From (Ft)	TVD to (Ft)
Production	4 1/2	11.6		0	1710		
Type	Size (in)	Weight (lb/ft)	Grade	TMD From (ft)	TMD to (ft)	TVD From (Ft)	TVD to (Ft)
Tubing	2 3/8	4.7		0	1710		
Type	Size (in)	Weight (lb/ft)	Grade	TMD From (ft)	TMD to (ft)	TVD From (Ft)	TVD to (Ft)

CEMENT DATA

Stage 1:

Type: Surface Plug

From Depth (ft):

0

To Depth (ft):

1710

Volume (sacks):

137

Volume (bbls):

28

Cement & Additives:

Density (ppg)

15.8

Yield (ft³/sk)

1.15

Water Req.

5.00

Stage 2:

Type: Top Off

From Depth (ft):

0

To Depth (ft):

161

Volume (sacks):

12

Volume (bbls):

2.5

Cement & Additives:

Density (ppg)

15.8

Yield (ft³/sk)

1.15

Water Req.

5.00

Stage 3:

Type:

From Depth (ft):

To Depth (ft):

Volume (sacks):

Volume (bbls):

Cement & Additives:

Density (ppg)

Yield (ft³/sk)

Water Req.

Stage 4:

Type:

From Depth (ft):

To Depth (ft):

Volume (sacks):

Volume (bbls):

Cement & Additives:

Density (ppg)

Yield (ft³/sk)

Water Req.

SUMMARY

Preflushes:	6 bbls of Fresh Water	Calculated Displacement (bbl):	Stage 1	Stage 2
	bbls of	Actual Displacement (bbl):		
	bbls of			
Total Preflush/Spacer Volume (bbl):	6	Plug Bump (Y/N):	N/A	Bump Pressure (psi): N/A
Total Slurry Volume (bbl):	30.5	Lost Returns (Y/N):	N (if Y, when)	
Total Fluid Pumped	36.5			
Returns to Surface:	Cement 1 bbls			

Job Notes (fluids pumped / procedures / tools / etc.):

Job pumped per customers request. Job went well.

Customer Representative Signature:

NEXTier[illegible]

NEXTier[illegible]



Client
Ticket No
Location
Comments

Ensign
20120005

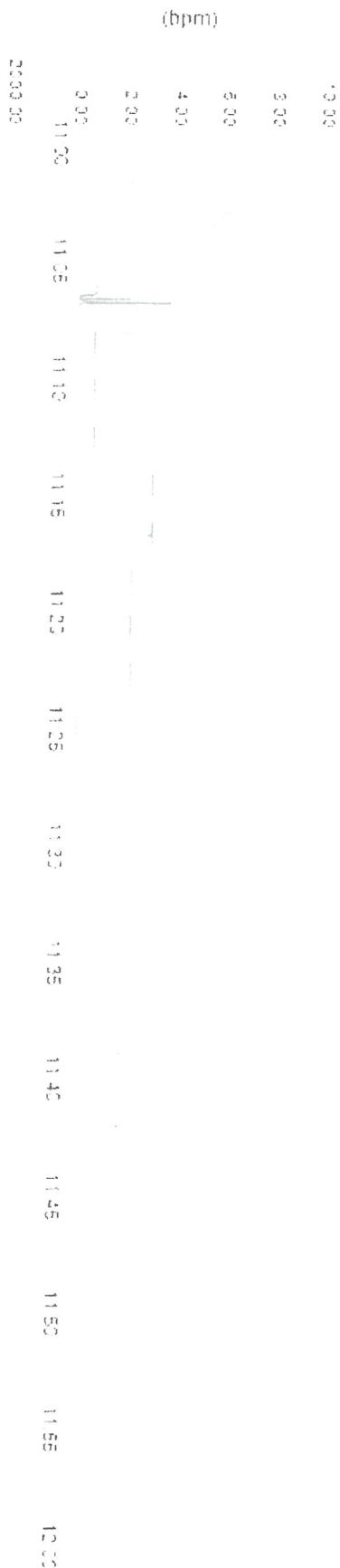
Chart Title
Well Name
Job Type

John Schmitt
Dalton 14-24
Abandonment Plugs

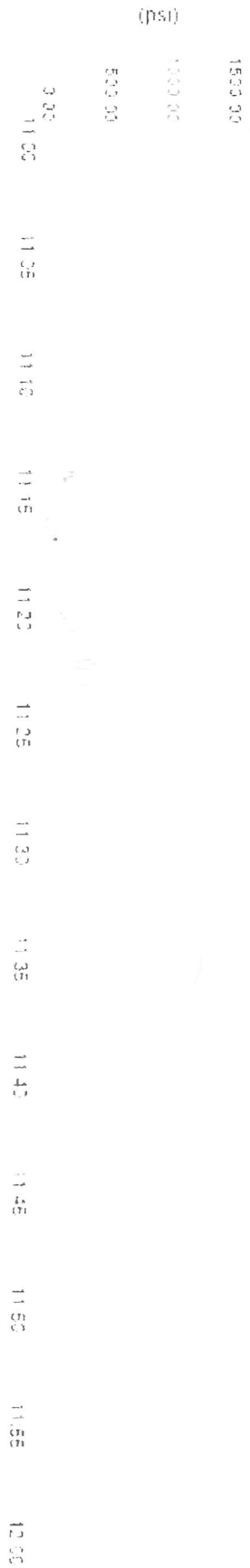
Supervisor
Unit No.
Service District
Job Date

Jeff Kopp
445084
Brighton Co
12/03/2020

Unit 445084 Rate Total



Unit 445084 Pump Pressure



Unit 445084 Density



RMWS - Service Ticket & Invoice:

Rocky Mountain Wireline Service
2144 Hwy 6 & 50
Grand Junction, CO 81505
970-245-9828



Ticket Number
115844

Date
12/3/2020
Well
Dalton 14-24

Field
Wattenburg
County / State
WELD/CO

Services provided for:
ENSIGN WELL SERVICE
2154 Hwy 6 & 50
Grand Junction, Colorado 81505

Services ordered by:
Logan Hancock
(970)712-4498
Logan.Hancock@ensignenergy.com

Job Data

Field Office

Johnstown-
CO Line Truck #
223

Crane #

**Pickup
Truck #**
78

**Explosives Permit
#**
92983

Crew Members

Z. Dionne, T. Morton, B. Morgan

CSG Size
4.5"
WT
11.6#

Zero	Fluid	Level	RMWS TD	Corrected	To Agree With	Dated	Consultant
10ft KB	Water		7050'			12/3/2020	John Schmitt

Job Notes
Rig 312

Travel

Report To Shop	Arrive At Location	On Well	Off well
12/3/2020 6:30 AM MST	12/3/2020 7:30 AM MST	12/3/2020 8:00 AM MST	12/3/2020 10:00 AM MST

Depart Location	Return To Shop	Travel Notes
10:20 AM MST	10:45 AM MST	

Activity

Miscellaneous - Bid Work

Description	From	To	Units Used
Ensign - 4 1/2" 10K CIBP @ 5,000' +		7026	1.00 Units
Ensign - Dump Bail 2 SX Cement (STANDARD)		7026	1.00 Units
Ensign - 4 1/2" 10K CIBP @ 5,000' or less		2500	1.00 Units
Ensign - Dump Bail 2 SX Cement (STANDARD)		2500	1.00 Units

Signatures

Authorization Signature

John Schmitt

Authorization Notes

12/3/2020 8:16 AM MST

AFE	Cost Code	Well / Lease	Approver Name
		Dalton 14-24	John Schmitt

Stamp