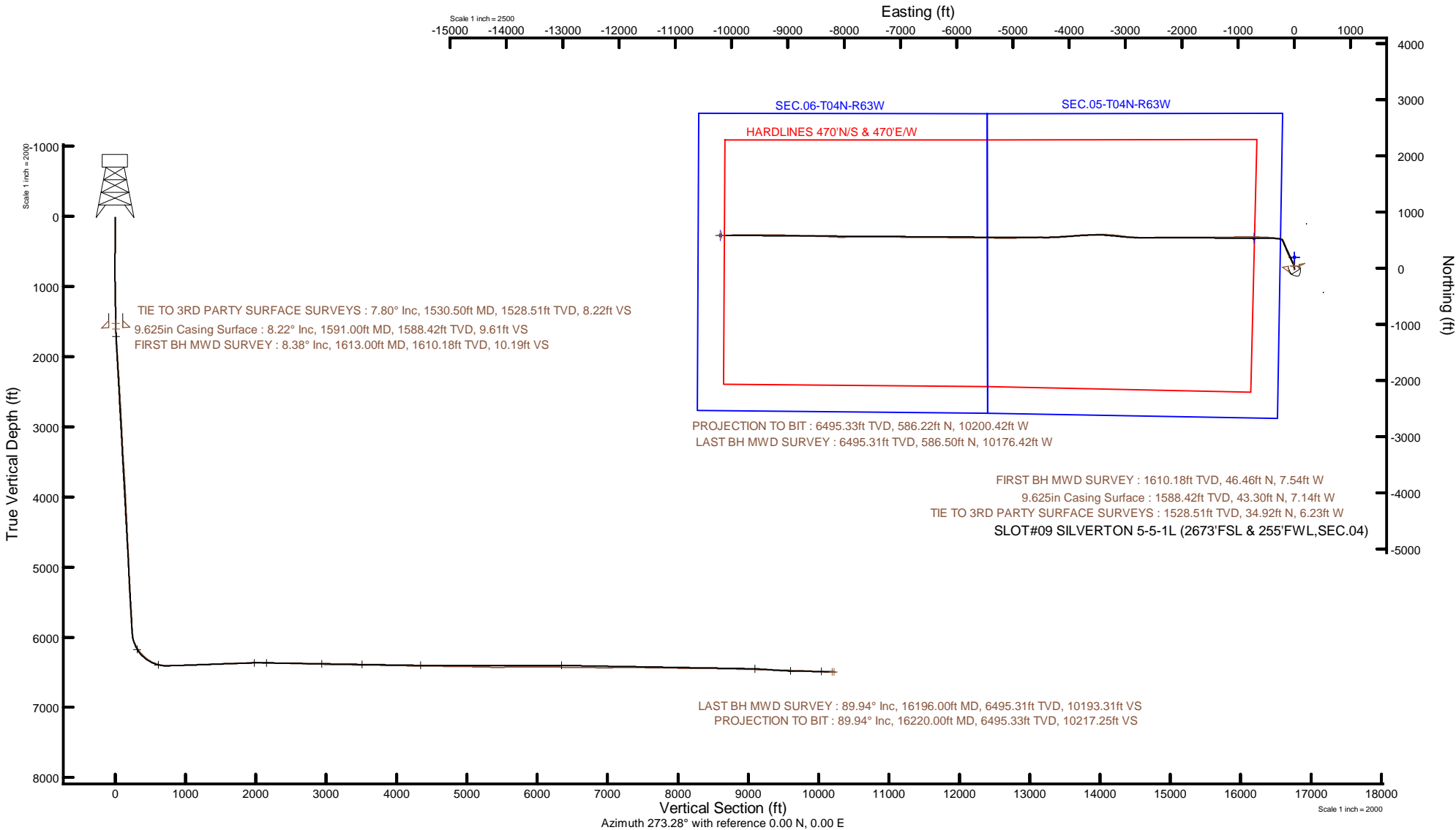


# CONFLUENCE RESOURCES

Location: COLORADO	Slot: SLOT#09 SILVERTON 5-5-1L (2673'FSL & 255'FWL,SEC.04)
Field: WELD COUNTY (NAD83, TRUE NORTH)	Well: SILVERTON 5-5-1L
Facility: SEC.04-T04N-R63W	Wellbore: SILVERTON 5-5-1L PWB
Plot reference wellpath is SILVERTON 5-5-1L PWP Rev-C.0	Grid System: NAD83 / Lambert Colorado SP, Northern Zone (501), US feet
True vertical depths are referenced to Ensign 162 (23) (RKB)	North Reference: True north
Reference wellpath measured depths are referenced to Ensign 162 (23) (RKB)	Scale: True distance
Ensign 162 (23) (RKB) to Mean Sea Level: 4648 feet	Coordinates are in feet referenced to Slot
Mean Sea Level to Mud line (At Slot: SLOT#09 SILVERTON 5-5-1L (2673'FSL & 255'FWL,SEC.04)): 0 feet	Depths are in feet
Offset wellpath MDs are referenced to each path's default MD datum	Created by: painsetr on 2020-12-18; Database: WellArchitectDB



## REFERENCE WELLPATH IDENTIFICATION

Operator	CONFLUENCE RESOURCES	Well	SILVERTON 5-5-1L
Field	WELD COUNTY (NAD83, TRUE NORTH)	API	0512348440
Facility	SEC.04-T04N-R63W	Wellbore	SILVERTON 5-5-1L AWB
Slot	SLOT#09 SILVERTON 5-5-1L (2673'FSL & 255'FWL,SEC.04)		

## REPORT SETUP INFORMATION

Projection System	NAD83 / Lambert Colorado SP, Northern Zone (501), US feet	Software System	WellArchitect® 6.0
North Reference	True	User	Painsetr
Scale	0.999958	Report Generated	12/18/2020 at 9:57:10 AM
Convergence at slot	0.68° East	Database	WellArchitectDB

## WELLPATH LOCATION

	Local coordinates		Grid coordinates		Geographic coordinates	
	North[ft]	East[ft]	Easting[US ft]	Northing[US ft]	Latitude	Longitude
Slot Location	-196.73	-2.79	3292259.35	1368838.56	40.3411200°	-104.4515200°
Facility Reference Pt			3292259.81	1369035.30	40.3416600°	-104.4515100°
Field Reference Pt			3230456.90	1245096.09	40.0032400°	-104.6773400°

## WELLPATH DATUM

Calculation method	Minimum curvature	Ensign 162 (23') (RKB) to Facility Vertical Datum	4648.00ft
Horizontal Reference Pt	Slot	Ensign 162 (23') (RKB) to Mean Sea Level	4648.00ft
Vertical Reference Pt	Ensign 162 (23') (RKB)	Ensign 162 (23') (RKB) to Mud Line at Slot (SLOT#09 SILVERTON 5-5-1L (2673'FSL & 255'FWL,SEC.04))	4648.00ft
MD Reference Pt	Ensign 162 (23') (RKB)	Section Origin	N 0.00, E 0.00 ft
Field Vertical Reference	Mean Sea Level	Section Azimuth	273.28°

**REFERENCE WELLPATH IDENTIFICATION**

Operator	CONFLUENCE RESOURCES	Well	SILVERTON 5-5-1L
Field	WELD COUNTY (NAD83, TRUE NORTH)	API	0512348440
Facility	SEC.04-T04N-R63W	Wellbore	SILVERTON 5-5-1L AWB
Slot	SLOT#09 SILVERTON 5-5-1L (2673'FSL & 255'FWL,SEC.04)		

**WELLPATH DATA (199 stations) † = interpolated, ‡ = extrapolated station**

MD [ft]	Inclination [°]	Azimuth [°]	TVD [ft]	Vert Sect [ft]	North [ft]	East [ft]	Grid East [US ft]	Grid North [US ft]	Latitude	Longitude	DLS [°/100ft]	Comments
0.00†	0.000	0.000	0.00	0.00	0.00	0.00	3292259.35	1368838.56	40.3411200	-104.4515200	0.00	
23.00	0.000	0.000	23.00	0.00	0.00	0.00	3292259.35	1368838.56	40.3411200	-104.4515200	0.00	
110.50	0.000	0.000	110.50	0.00	0.00	0.00	3292259.35	1368838.56	40.3411200	-104.4515200	0.00	
185.50	0.400	161.800	185.50	-0.10	-0.25	0.08	3292259.43	1368838.32	40.3411193	-104.4515197	0.53	
214.50	0.500	163.000	214.50	-0.18	-0.47	0.15	3292259.50	1368838.10	40.3411187	-104.4515195	0.35	
275.50	0.700	157.700	275.50	-0.43	-1.07	0.37	3292259.73	1368837.50	40.3411171	-104.4515187	0.34	
305.50	1.100	148.300	305.49	-0.67	-1.48	0.59	3292259.95	1368837.09	40.3411159	-104.4515179	1.42	
336.50	0.900	155.300	336.49	-0.96	-1.95	0.85	3292260.22	1368836.62	40.3411146	-104.4515170	0.75	
426.50	0.500	151.800	426.48	-1.50	-2.94	1.33	3292260.71	1368835.64	40.3411119	-104.4515152	0.45	
471.50	0.500	145.600	471.48	-1.72	-3.28	1.53	3292260.92	1368835.30	40.3411110	-104.4515145	0.12	
515.50	0.600	149.300	515.48	-1.96	-3.63	1.76	3292261.15	1368834.95	40.3411100	-104.4515137	0.24	
560.50	0.600	141.900	560.47	-2.25	-4.02	2.02	3292261.42	1368834.57	40.3411090	-104.4515127	0.17	
605.50	0.700	151.800	605.47	-2.55	-4.45	2.30	3292261.70	1368834.14	40.3411078	-104.4515117	0.33	
649.50	0.900	150.200	649.47	-2.88	-4.99	2.60	3292262.00	1368833.61	40.3411063	-104.4515107	0.46	
694.50	1.000	159.700	694.46	-3.23	-5.66	2.91	3292262.32	1368832.94	40.3411045	-104.4515096	0.41	
739.50	0.900	161.800	739.45	-3.52	-6.37	3.16	3292262.58	1368832.24	40.3411025	-104.4515087	0.24	
784.50	0.400	180.900	784.45	-3.65	-6.86	3.27	3292262.69	1368831.74	40.3411012	-104.4515083	1.20	
873.50	1.100	308.600	873.45	-2.97	-6.64	2.59	3292262.02	1368831.96	40.3411018	-104.4515107	1.55	
918.50	1.600	324.200	918.43	-2.22	-5.86	1.89	3292261.30	1368832.73	40.3411039	-104.4515132	1.37	
962.50	1.800	329.300	962.41	-1.45	-4.76	1.18	3292260.58	1368833.81	40.3411069	-104.4515158	0.57	
1007.50	2.100	328.300	1007.39	-0.58	-3.46	0.38	3292259.77	1368835.11	40.3411105	-104.4515186	0.67	
1048.50	2.000	325.300	1048.36	0.29	-2.23	-0.42	3292258.95	1368836.33	40.3411139	-104.4515215	0.36	
1093.50	2.100	328.400	1093.33	1.25	-0.88	-1.30	3292258.06	1368837.67	40.3411176	-104.4515247	0.33	
1137.50	2.100	328.100	1137.30	2.17	0.49	-2.15	3292257.19	1368839.03	40.3411213	-104.4515277	0.02	
1182.50	2.400	337.600	1182.27	3.06	2.06	-2.94	3292256.38	1368840.59	40.3411257	-104.4515306	1.06	
1226.50	3.100	347.400	1226.22	3.78	4.08	-3.55	3292255.75	1368842.60	40.3411312	-104.4515327	1.91	
1271.50	3.700	356.600	1271.14	4.28	6.71	-3.90	3292255.36	1368845.23	40.3411384	-104.4515340	1.80	
1315.50	4.400	356.900	1315.03	4.64	9.81	-4.08	3292255.15	1368848.33	40.3411469	-104.4515346	1.59	
1360.50	5.500	356.600	1359.86	5.08	13.69	-4.30	3292254.88	1368852.20	40.3411576	-104.4515354	2.45	
1405.50	6.900	355.100	1404.60	5.71	18.54	-4.66	3292254.47	1368857.04	40.3411709	-104.4515367	3.13	

**REFERENCE WELLPATH IDENTIFICATION**

Operator	CONFLUENCE RESOURCES	Well	SILVERTON 5-5-1L
Field	WELD COUNTY (NAD83, TRUE NORTH)	API	0512348440
Facility	SEC.04-T04N-R63W	Wellbore	SILVERTON 5-5-1L AWB
Slot	SLOT#09 SILVERTON 5-5-1L (2673'FSL & 255'FWL,SEC.04)		

**WELLPATH DATA (199 stations)**

MD [ft]	Inclination [°]	Azimuth [°]	TVD [ft]	Vert Sect [ft]	North [ft]	East [ft]	Grid East [US ft]	Grid North [US ft]	Latitude	Longitude	DLS [°/100ft]	Comments
1449.50	7.500	355.000	1448.25	6.50	24.03	-5.14	3292253.93	1368862.53	40.3411860	-104.4515384	1.36	
1494.50	7.900	353.700	1492.84	7.44	30.03	-5.73	3292253.26	1368868.52	40.3412024	-104.4515406	0.97	
1530.50	7.800	354.600	1528.51	8.22	34.92	-6.23	3292252.70	1368873.41	40.3412159	-104.4515424	0.44	TIE TO 3RD PARTY SURFACE SURVEYS
1613.00	8.380	352.500	1610.18	10.19	46.46	-7.54	3292251.25	1368884.92	40.3412475	-104.4515471	0.79	FIRST BH MWD SURVEY
1702.00	7.730	344.080	1698.31	13.38	58.64	-10.03	3292248.62	1368897.08	40.3412810	-104.4515560	1.51	
1792.00	6.610	331.070	1787.61	18.13	69.00	-14.20	3292244.33	1368907.38	40.3413094	-104.4515709	2.18	
1882.00	7.330	332.250	1876.94	23.85	78.61	-19.38	3292239.04	1368916.94	40.3413358	-104.4515895	0.82	
1971.00	7.090	333.800	1965.24	29.48	88.56	-24.45	3292233.85	1368926.83	40.3413631	-104.4516077	0.35	
2061.00	6.770	330.150	2054.58	35.11	98.15	-29.54	3292228.65	1368936.35	40.3413894	-104.4516260	0.60	
2150.00	7.350	332.770	2142.91	40.87	107.76	-34.76	3292223.32	1368945.90	40.3414158	-104.4516447	0.75	
2240.00	6.910	324.870	2232.21	47.16	117.31	-40.51	3292217.46	1368955.38	40.3414420	-104.4516653	1.19	
2329.00	6.330	335.990	2320.62	52.73	126.17	-45.58	3292212.28	1368964.18	40.3414663	-104.4516835	1.58	
2419.00	6.280	330.770	2410.08	57.66	135.00	-50.01	3292207.75	1368972.95	40.3414906	-104.4516994	0.64	
2508.00	6.390	332.070	2498.54	62.84	143.62	-54.70	3292202.95	1368981.52	40.3415142	-104.4517162	0.20	
2597.00	6.810	330.800	2586.95	68.24	152.60	-59.60	3292197.95	1368990.44	40.3415389	-104.4517338	0.50	
2687.00	6.540	333.530	2676.34	73.65	161.85	-64.48	3292192.96	1368999.63	40.3415643	-104.4517513	0.46	
2776.00	6.220	332.810	2764.79	78.61	170.67	-68.95	3292188.39	1369008.40	40.3415885	-104.4517673	0.37	
2866.00	6.190	335.780	2854.26	83.32	179.44	-73.16	3292184.07	1369017.11	40.3416125	-104.4517825	0.36	
2956.00	6.470	334.390	2943.71	88.01	188.43	-77.35	3292179.78	1369026.06	40.3416372	-104.4517975	0.35	
3045.00	6.090	336.700	3032.18	92.55	197.29	-81.38	3292175.64	1369034.87	40.3416616	-104.4518119	0.51	
3135.00	6.200	334.820	3121.66	97.00	206.07	-85.34	3292171.58	1369043.60	40.3416857	-104.4518261	0.25	
3224.00	5.850	338.540	3210.17	101.19	214.65	-89.04	3292167.78	1369052.13	40.3417092	-104.4518394	0.59	
3314.00	6.410	335.800	3299.65	105.43	223.50	-92.78	3292163.93	1369060.94	40.3417335	-104.4518528	0.70	
3404.00	7.110	334.270	3389.03	110.45	233.10	-97.26	3292159.34	1369070.48	40.3417598	-104.4518689	0.80	
3493.00	7.390	330.930	3477.32	116.18	243.06	-102.43	3292154.05	1369080.39	40.3417872	-104.4518874	0.57	
3583.00	7.610	335.150	3566.55	122.09	253.53	-107.75	3292148.62	1369090.79	40.3418159	-104.4519065	0.66	
3672.00	7.250	335.380	3654.80	127.50	263.98	-112.56	3292143.68	1369101.18	40.3418446	-104.4519238	0.41	
3762.00	6.930	335.260	3744.11	132.71	274.07	-117.20	3292138.92	1369111.22	40.3418723	-104.4519404	0.36	
3852.00	6.640	335.730	3833.48	137.66	283.75	-121.61	3292134.39	1369120.84	40.3418989	-104.4519563	0.33	
3941.00	6.610	336.260	3921.89	142.37	293.13	-125.79	3292130.11	1369130.17	40.3419246	-104.4519712	0.08	

**REFERENCE WELLPATH IDENTIFICATION**

Operator	CONFLUENCE RESOURCES	Well	SILVERTON 5-5-1L
Field	WELD COUNTY (NAD83, TRUE NORTH)	API	0512348440
Facility	SEC.04-T04N-R63W	Wellbore	SILVERTON 5-5-1L AWB
Slot	SLOT#09 SILVERTON 5-5-1L (2673'FSL & 255'FWL,SEC.04)		

**WELLPATH DATA (199 stations)**

MD [ft]	Inclination [°]	Azimuth [°]	TVD [ft]	Vert Sect [ft]	North [ft]	East [ft]	Grid East [US ft]	Grid North [US ft]	Latitude	Longitude	DLS [°/100ft]	Comments
4030.00	6.670	338.080	4010.29	146.90	302.61	-129.78	3292126.00	1369139.61	40.3419506	-104.4519856	0.25	
4120.00	6.620	338.290	4099.68	151.32	312.28	-133.65	3292122.02	1369149.23	40.3419772	-104.4519994	0.06	
4209.00	6.900	338.960	4188.07	155.69	322.04	-137.47	3292118.09	1369158.94	40.3420040	-104.4520131	0.33	
4298.00	6.540	337.840	4276.45	160.07	331.72	-141.30	3292114.14	1369168.58	40.3420305	-104.4520269	0.43	
4388.00	6.840	340.790	4365.84	164.32	341.53	-145.00	3292110.33	1369178.34	40.3420575	-104.4520401	0.51	
4478.00	5.720	337.690	4455.30	168.31	350.74	-148.46	3292106.75	1369187.51	40.3420828	-104.4520526	1.30	
4567.00	6.420	339.520	4543.80	172.23	359.50	-151.89	3292103.23	1369196.23	40.3421068	-104.4520649	0.82	
4657.00	6.380	338.710	4633.24	176.33	368.88	-155.46	3292099.54	1369205.56	40.3421325	-104.4520777	0.11	
4746.00	6.270	338.660	4721.70	180.42	378.01	-159.03	3292095.87	1369214.65	40.3421576	-104.4520905	0.12	
4835.00	5.910	339.070	4810.20	184.32	386.82	-162.43	3292092.36	1369223.42	40.3421818	-104.4521027	0.41	
4924.00	5.850	340.010	4898.73	187.99	395.36	-165.62	3292089.07	1369231.92	40.3422052	-104.4521141	0.13	
5014.00	6.590	340.100	4988.20	191.84	404.53	-168.94	3292085.64	1369241.05	40.3422304	-104.4521261	0.82	
5103.00	5.950	343.040	5076.66	195.44	413.74	-172.03	3292082.45	1369250.22	40.3422557	-104.4521371	0.80	
5193.00	6.640	349.490	5166.12	198.30	423.32	-174.34	3292080.02	1369259.77	40.3422820	-104.4521454	1.10	
5282.00	6.040	340.070	5254.58	201.37	432.78	-176.87	3292077.38	1369269.20	40.3423079	-104.4521545	1.35	
5372.00	6.490	339.150	5344.04	205.32	441.99	-180.30	3292073.84	1369278.37	40.3423332	-104.4521668	0.51	
5461.00	6.920	336.590	5432.43	209.78	451.61	-184.22	3292069.81	1369287.94	40.3423596	-104.4521809	0.59	
5551.00	7.080	335.630	5521.76	214.79	461.63	-188.66	3292065.25	1369297.91	40.3423871	-104.4521968	0.22	
5640.00	7.270	336.650	5610.07	219.86	471.80	-193.16	3292060.63	1369308.03	40.3424151	-104.4522129	0.26	
5730.00	7.010	336.340	5699.37	224.90	482.06	-197.62	3292056.05	1369318.23	40.3424432	-104.4522289	0.29	
5819.00	6.930	335.430	5787.71	229.87	491.92	-202.03	3292051.52	1369328.03	40.3424703	-104.4522447	0.15	
5909.00	6.970	330.420	5877.05	235.37	501.60	-206.98	3292046.46	1369337.66	40.3424969	-104.4522625	0.67	
5998.00	8.990	304.640	5965.21	244.24	510.26	-215.37	3292037.97	1369346.21	40.3425206	-104.4522926	4.56	
6087.00	18.660	286.370	6051.57	264.11	518.24	-234.81	3292018.44	1369353.97	40.3425425	-104.4523623	11.79	
6177.00	28.620	280.170	6133.92	299.62	526.13	-269.93	3291983.22	1369361.44	40.3425642	-104.4524883	11.39	
6266.00	38.010	277.850	6208.22	348.21	533.65	-318.17	3291934.90	1369368.39	40.3425848	-104.4526614	10.65	
6355.00	47.880	276.400	6273.29	408.64	541.09	-378.27	3291874.72	1369375.12	40.3426052	-104.4528770	11.14	
6445.00	56.320	274.210	6328.53	479.54	547.57	-448.92	3291804.01	1369380.77	40.3426230	-104.4531304	9.57	
6534.00	67.950	272.640	6370.05	558.08	552.21	-527.32	3291725.56	1369384.47	40.3426358	-104.4534117	13.16	
6623.00	78.040	271.870	6396.05	643.07	555.54	-612.26	3291640.59	1369386.80	40.3426449	-104.4537164	11.37	

**REFERENCE WELLPATH IDENTIFICATION**

Operator	CONFLUENCE RESOURCES	Well	SILVERTON 5-5-1L
Field	WELD COUNTY (NAD83, TRUE NORTH)	API	0512348440
Facility	SEC.04-T04N-R63W	Wellbore	SILVERTON 5-5-1L AWB
Slot	SLOT#09 SILVERTON 5-5-1L (2673'FSL & 255'FWL,SEC.04)		

**WELLPATH DATA (199 stations)**

MD [ft]	Inclination [°]	Azimuth [°]	TVD [ft]	Vert Sect [ft]	North [ft]	East [ft]	Grid East [US ft]	Grid North [US ft]	Latitude	Longitude	DLS [°/100ft]	Comments
6713.00	88.860	272.140	6406.30	732.33	558.66	-701.48	3291551.34	1369388.87	40.3426535	-104.4540364	12.03	
6734.00	91.600	273.090	6406.22	753.32	559.62	-722.46	3291530.36	1369389.58	40.3426561	-104.4541117	13.81	
6802.00	91.750	270.890	6404.23	821.27	561.98	-790.38	3291462.41	1369391.14	40.3426626	-104.4543554	3.24	
6891.00	91.480	268.400	6401.72	910.05	561.43	-879.34	3291373.47	1369389.53	40.3426610	-104.4546745	2.81	
6981.00	91.570	268.210	6399.32	999.68	558.77	-969.27	3291283.58	1369385.81	40.3426537	-104.4549971	0.23	
7071.00	92.120	268.450	6396.43	1089.30	556.15	-1059.18	3291193.71	1369382.12	40.3426465	-104.4553196	0.67	
7160.00	92.280	268.990	6393.01	1177.95	554.16	-1148.09	3291104.83	1369379.09	40.3426411	-104.4556386	0.63	
7250.00	92.280	268.970	6389.43	1267.62	552.56	-1238.01	3291014.95	1369376.42	40.3426367	-104.4559611	0.02	
7339.00	92.150	269.240	6385.99	1356.32	551.17	-1326.93	3290926.05	1369373.98	40.3426328	-104.4562801	0.34	
7429.00	92.180	269.420	6382.59	1446.04	550.12	-1416.86	3290836.14	1369371.87	40.3426299	-104.4566028	0.20	
7519.00	92.190	270.310	6379.16	1535.82	549.91	-1506.79	3290746.22	1369370.59	40.3426293	-104.4569254	0.99	
7608.00	92.180	270.390	6375.77	1624.63	550.45	-1595.73	3290657.29	1369370.08	40.3426308	-104.4572444	0.09	
7698.00	92.250	270.450	6372.29	1714.45	551.11	-1685.66	3290567.37	1369369.68	40.3426326	-104.4575670	0.10	
7788.00	92.120	270.080	6368.86	1804.26	551.53	-1775.59	3290477.44	1369369.03	40.3426337	-104.4578896	0.44	
7877.00	91.050	270.440	6366.39	1893.10	551.93	-1864.55	3290388.48	1369368.38	40.3426348	-104.4582088	1.27	
7966.00	89.630	269.700	6365.87	1981.96	552.04	-1953.55	3290299.49	1369367.44	40.3426351	-104.4585280	1.80	
8056.00	89.510	269.730	6366.54	2071.78	551.59	-2043.55	3290209.51	1369365.93	40.3426338	-104.4588509	0.14	
8145.00	89.420	269.670	6367.37	2160.61	551.12	-2132.54	3290120.53	1369364.41	40.3426325	-104.4591701	0.12	
8234.00	89.380	269.840	6368.30	2249.43	550.74	-2221.53	3290031.55	1369362.98	40.3426315	-104.4594894	0.20	
8324.00	88.680	269.230	6369.83	2339.23	550.01	-2311.52	3289941.59	1369361.18	40.3426295	-104.4598122	1.03	
8413.00	88.710	269.300	6371.86	2427.98	548.87	-2400.49	3289852.64	1369358.99	40.3426263	-104.4601314	0.09	
8503.00	88.520	269.270	6374.03	2517.74	547.75	-2490.45	3289762.70	1369356.81	40.3426232	-104.4604541	0.21	
8592.00	88.370	269.460	6376.45	2606.50	546.76	-2579.42	3289673.76	1369354.77	40.3426205	-104.4607732	0.27	
8681.00	88.250	269.490	6379.07	2695.26	545.95	-2668.37	3289584.82	1369352.90	40.3426182	-104.4610924	0.14	
8771.00	88.280	271.660	6381.80	2785.12	546.85	-2758.32	3289494.87	1369352.74	40.3426206	-104.4614150	2.41	
8860.00	88.210	273.830	6384.52	2874.06	551.11	-2847.17	3289405.98	1369355.95	40.3426323	-104.4617338	2.44	
8949.00	89.080	274.870	6386.63	2963.02	557.86	-2935.89	3289317.19	1369361.65	40.3426508	-104.4620520	1.52	
9038.00	89.020	277.920	6388.10	3051.87	567.77	-3024.31	3289228.66	1369370.51	40.3426780	-104.4623692	3.43	
9128.00	89.080	276.950	6389.59	3141.62	579.41	-3113.54	3289139.31	1369381.10	40.3427099	-104.4626893	1.08	
9218.00	89.110	275.670	6391.02	3231.48	589.30	-3202.98	3289049.76	1369389.93	40.3427370	-104.4630102	1.42	

**REFERENCE WELLPATH IDENTIFICATION**

Operator	CONFLUENCE RESOURCES	Well	SILVERTON 5-5-1L
Field	WELD COUNTY (NAD83, TRUE NORTH)	API	0512348440
Facility	SEC.04-T04N-R63W	Wellbore	SILVERTON 5-5-1L AWP
Slot	SLOT#09 SILVERTON 5-5-1L (2673'FSL & 255'FWL,SEC.04)		

**WELLPATH DATA (199 stations)**

MD [ft]	Inclination [°]	Azimuth [°]	TVD [ft]	Vert Sect [ft]	North [ft]	East [ft]	Grid East [US ft]	Grid North [US ft]	Latitude	Longitude	DLS [°/100ft]	Comments
9307.00	88.980	273.070	6392.50	3320.44	596.08	-3291.71	3288960.97	1369395.66	40.3427556	-104.4633285	2.92	
9397.00	89.170	271.350	6393.95	3410.41	599.55	-3381.62	3288871.02	1369398.07	40.3427651	-104.4636511	1.92	
9486.00	89.050	268.640	6395.34	3499.25	599.55	-3470.61	3288782.05	1369397.01	40.3427650	-104.4639703	3.05	
9575.00	89.080	268.650	6396.79	3587.94	597.44	-3559.57	3288693.12	1369393.85	40.3427592	-104.4642894	0.04	
9664.00	88.950	268.610	6398.32	3676.64	595.32	-3648.53	3288604.19	1369390.67	40.3427534	-104.4646085	0.15	
9754.00	88.980	267.640	6399.94	3766.26	592.37	-3738.47	3288514.30	1369386.67	40.3427452	-104.4649312	1.08	
9844.00	88.890	264.780	6401.62	3855.55	586.42	-3828.24	3288424.60	1369379.66	40.3427289	-104.4652532	3.18	
9933.00	89.110	265.250	6403.17	3943.61	578.69	-3916.89	3288336.06	1369370.88	40.3427076	-104.4655712	0.58	
10022.00	88.980	266.350	6404.65	4031.84	572.17	-4005.64	3288247.40	1369363.31	40.3426897	-104.4658896	1.24	
10111.00	89.020	267.620	6406.21	4120.28	567.49	-4094.50	3288158.60	1369357.58	40.3426768	-104.4662084	1.43	
10200.00	89.050	267.350	6407.71	4208.82	563.59	-4183.40	3288069.75	1369352.63	40.3426660	-104.4665273	0.31	
10290.00	89.020	267.550	6409.22	4298.34	559.59	-4273.30	3287979.91	1369347.56	40.3426550	-104.4668498	0.22	
10379.00	89.020	267.430	6410.74	4386.87	555.69	-4362.20	3287891.07	1369342.61	40.3426443	-104.4671687	0.13	
10468.00	89.020	267.680	6412.27	4475.41	551.89	-4451.11	3287802.22	1369337.77	40.3426338	-104.4674876	0.28	
10557.00	90.340	268.040	6412.76	4564.01	548.57	-4540.04	3287713.33	1369333.39	40.3426246	-104.4678067	1.54	
10647.00	88.950	267.790	6413.32	4653.61	545.29	-4629.98	3287623.45	1369329.05	40.3426156	-104.4681293	1.57	
10736.00	89.140	268.940	6414.80	4742.27	542.76	-4718.93	3287534.54	1369325.46	40.3426086	-104.4684484	1.31	
10825.00	89.570	269.160	6415.81	4831.02	541.28	-4807.91	3287445.58	1369322.94	40.3426045	-104.4687676	0.54	
10915.00	89.420	269.040	6416.60	4920.78	539.87	-4897.90	3287355.62	1369320.46	40.3426006	-104.4690904	0.21	
11004.00	88.650	270.190	6418.10	5009.58	539.27	-4986.88	3287266.66	1369318.81	40.3425989	-104.4694096	1.55	
11094.00	87.940	269.910	6420.78	5099.40	539.35	-5076.84	3287176.71	1369317.82	40.3425990	-104.4697323	0.85	
11183.00	88.620	269.970	6423.45	5188.21	539.25	-5165.80	3287087.76	1369316.68	40.3425987	-104.4700515	0.77	
11272.00	88.620	270.130	6425.59	5277.04	539.33	-5254.77	3286998.79	1369315.71	40.3425989	-104.4703706	0.18	
11362.00	89.110	270.000	6427.37	5366.88	539.43	-5344.76	3286908.82	1369314.74	40.3425991	-104.4706934	0.56	
11452.00	90.680	270.460	6427.54	5456.75	539.79	-5434.75	3286818.83	1369314.04	40.3426001	-104.4710163	1.82	
11541.00	90.490	270.600	6426.63	5545.64	540.62	-5523.74	3286729.84	1369313.81	40.3426023	-104.4713355	0.27	
11631.00	90.520	270.670	6425.84	5635.54	541.62	-5613.73	3286639.85	1369313.74	40.3426049	-104.4716584	0.08	
11720.00	90.310	270.640	6425.19	5724.44	542.63	-5702.73	3286550.85	1369313.71	40.3426077	-104.4719776	0.24	
11809.00	90.430	270.690	6424.62	5813.35	543.67	-5791.72	3286461.86	1369313.69	40.3426105	-104.4722968	0.15	
11899.00	89.630	270.440	6424.57	5903.25	544.55	-5881.71	3286371.86	1369313.51	40.3426128	-104.4726197	0.93	



**REFERENCE WELLPATH IDENTIFICATION**

Operator	CONFLUENCE RESOURCES	Well	SILVERTON 5-5-1L
Field	WELD COUNTY (NAD83, TRUE NORTH)	API	0512348440
Facility	SEC.04-T04N-R63W	Wellbore	SILVERTON 5-5-1L AWB
Slot	SLOT#09 SILVERTON 5-5-1L (2673'FSL & 255'FWL,SEC.04)		

**WELLPATH DATA (199 stations)**

MD [ft]	Inclination [°]	Azimuth [°]	TVD [ft]	Vert Sect [ft]	North [ft]	East [ft]	Grid East [US ft]	Grid North [US ft]	Latitude	Longitude	DLS [°/100ft]	Comments
11988.00	89.910	270.680	6424.93	5992.15	545.42	-5970.71	3286282.87	1369313.33	40.3426152	-104.4729389	0.41	
12078.00	91.110	270.910	6424.13	6082.06	546.67	-6060.69	3286192.88	1369313.52	40.3426185	-104.4732617	1.36	
12167.00	89.080	270.410	6423.98	6170.96	547.70	-6149.68	3286103.89	1369313.49	40.3426213	-104.4735810	2.35	
12257.00	89.010	270.190	6425.48	6260.82	548.17	-6239.67	3286013.91	1369312.90	40.3426225	-104.4739038	0.26	
12346.00	89.200	270.630	6426.87	6349.70	548.80	-6328.66	3285924.92	1369312.48	40.3426242	-104.4742230	0.54	
12436.00	89.350	270.260	6428.01	6439.58	549.50	-6418.65	3285834.93	1369312.12	40.3426261	-104.4745458	0.44	
12526.00	89.230	270.780	6429.12	6529.47	550.32	-6508.63	3285744.95	1369311.87	40.3426282	-104.4748687	0.59	
12616.00	89.260	270.680	6430.31	6619.37	551.47	-6598.62	3285654.96	1369311.95	40.3426313	-104.4751915	0.12	
12705.00	89.110	270.410	6431.57	6708.26	552.31	-6687.61	3285565.97	1369311.75	40.3426336	-104.4755107	0.35	
12794.00	89.230	270.470	6432.86	6797.14	553.00	-6776.59	3285476.98	1369311.38	40.3426354	-104.4758299	0.15	
12884.00	89.260	270.760	6434.05	6887.04	553.96	-6866.58	3285387.00	1369311.28	40.3426380	-104.4761527	0.32	
12974.00	90.580	271.080	6434.18	6976.96	555.41	-6956.57	3285297.00	1369311.66	40.3426419	-104.4764756	1.51	
13063.00	90.340	270.470	6433.46	7065.87	556.61	-7045.56	3285208.01	1369311.81	40.3426451	-104.4767948	0.74	
13153.00	90.000	270.650	6433.19	7155.77	557.49	-7135.55	3285118.02	1369311.63	40.3426474	-104.4771176	0.43	
13242.00	90.000	270.810	6433.19	7244.68	558.63	-7224.54	3285029.02	1369311.71	40.3426505	-104.4774369	0.18	
13332.00	90.060	270.890	6433.15	7334.60	559.96	-7314.53	3284939.02	1369311.98	40.3426541	-104.4777597	0.11	
13422.00	90.000	270.500	6433.10	7424.51	561.05	-7404.53	3284849.03	1369312.01	40.3426570	-104.4780825	0.44	
13512.00	89.750	270.890	6433.30	7514.41	562.14	-7494.52	3284759.03	1369312.03	40.3426599	-104.4784054	0.51	
13601.00	89.260	270.290	6434.06	7603.31	563.06	-7583.51	3284670.04	1369311.90	40.3426624	-104.4787246	0.87	
13691.00	90.090	270.710	6434.58	7693.20	563.85	-7673.51	3284580.05	1369311.62	40.3426644	-104.4790475	1.03	
13781.00	88.150	269.830	6435.96	7783.06	564.27	-7763.49	3284490.07	1369310.98	40.3426655	-104.4793703	2.37	
13870.00	89.660	269.200	6437.66	7871.85	563.52	-7852.47	3284401.11	1369309.17	40.3426634	-104.4796895	1.84	
13959.00	88.460	264.080	6439.12	7960.21	558.30	-7941.27	3284312.38	1369302.91	40.3426490	-104.4800080	5.91	
14049.00	89.380	270.000	6440.82	8049.62	553.66	-8031.09	3284222.62	1369297.21	40.3426362	-104.4803302	6.66	
14139.00	89.630	273.540	6441.59	8139.57	556.44	-8121.03	3284132.66	1369298.92	40.3426437	-104.4806529	3.94	
14229.00	89.170	272.940	6442.54	8229.57	561.53	-8210.88	3284042.76	1369302.95	40.3426576	-104.4809752	0.84	
14319.00	89.630	272.350	6443.48	8319.55	565.68	-8300.78	3283952.82	1369306.04	40.3426689	-104.4812977	0.83	
14409.00	89.320	271.800	6444.30	8409.53	568.94	-8390.72	3283862.86	1369308.23	40.3426778	-104.4816204	0.70	
14498.00	88.980	271.650	6445.62	8498.49	571.62	-8479.67	3283773.88	1369309.86	40.3426851	-104.4819395	0.42	
14587.00	89.050	271.940	6447.15	8587.44	574.40	-8568.61	3283684.92	1369311.59	40.3426926	-104.4822585	0.34	



**REFERENCE WELLPATH IDENTIFICATION**

Operator	CONFLUENCE RESOURCES	Well	SILVERTON 5-5-1L
Field	WELD COUNTY (NAD83, TRUE NORTH)	API	0512348440
Facility	SEC.04-T04N-R63W	Wellbore	SILVERTON 5-5-1L AWB
Slot	SLOT#09 SILVERTON 5-5-1L (2673'FSL & 255'FWL,SEC.04)		

**WELLPATH DATA (199 stations) † = interpolated, ‡ = extrapolated station**

MD [ft]	Inclination [°]	Azimuth [°]	TVD [ft]	Vert Sect [ft]	North [ft]	East [ft]	Grid East [US ft]	Grid North [US ft]	Latitude	Longitude	DLS [°/100ft]	Comments
14677.00	88.520	271.680	6449.06	8677.39	577.25	-8658.55	3283594.96	1369313.37	40.3427003	-104.4825812	0.66	
14767.00	88.370	271.560	6451.51	8767.32	579.79	-8748.48	3283505.01	1369314.85	40.3427072	-104.4829038	0.21	
14857.00	88.340	271.660	6454.09	8857.25	582.32	-8838.40	3283415.06	1369316.32	40.3427141	-104.4832264	0.12	
14946.00	88.740	271.480	6456.36	8946.18	584.75	-8927.34	3283326.11	1369317.70	40.3427207	-104.4835454	0.49	
15035.00	88.740	272.500	6458.31	9035.13	587.84	-9016.27	3283237.16	1369319.74	40.3427291	-104.4838644	1.15	
15125.00	88.340	270.390	6460.61	9125.05	590.11	-9106.20	3283147.20	1369320.94	40.3427352	-104.4841871	2.39	
15214.00	88.520	270.500	6463.05	9213.91	590.80	-9195.17	3283058.24	1369320.58	40.3427370	-104.4845062	0.24	
15304.00	88.490	270.340	6465.39	9303.77	591.46	-9285.13	3282968.28	1369320.18	40.3427387	-104.4848290	0.18	
15394.00	88.310	270.320	6467.91	9393.61	591.98	-9375.10	3282878.32	1369319.63	40.3427401	-104.4851517	0.20	
15484.00	88.490	270.430	6470.42	9483.46	592.57	-9465.06	3282788.36	1369319.16	40.3427416	-104.4854744	0.23	
15574.00	88.490	270.420	6472.79	9573.32	593.24	-9555.03	3282698.39	1369318.76	40.3427433	-104.4857972	0.01	
15664.00	88.620	270.460	6475.06	9663.18	593.93	-9644.99	3282608.43	1369318.39	40.3427451	-104.4861199	0.15	
15753.00	87.600	270.730	6478.00	9752.03	594.85	-9733.94	3282519.48	1369318.26	40.3427476	-104.4864390	1.19	
15842.00	86.520	268.210	6482.56	9840.71	594.03	-9822.81	3282430.63	1369316.39	40.3427452	-104.4867578	3.08	
15932.00	86.520	268.360	6488.02	9930.20	591.34	-9912.60	3282340.88	1369312.64	40.3427377	-104.4870799	0.17	
16021.00	88.150	268.820	6492.16	10018.80	589.15	-10001.48	3282252.04	1369309.40	40.3427316	-104.4873987	1.90	
16111.00	88.920	269.200	6494.46	10108.52	587.60	-10091.43	3282162.11	1369306.78	40.3427273	-104.4877214	0.95	
16196.00	89.940	269.320	6495.31	10193.31	586.50	-10176.42	3282077.15	1369304.68	40.3427242	-104.4880263	1.21	LAST BH MWD SURVEY
16220.00†	89.940	269.320	6495.33	10217.25	586.22	-10200.42	3282053.16	1369304.11	40.3427233	-104.4881124	0.00	PROJECTION TO BIT

**HOLE & CASING SECTIONS - Ref Wellbore: SILVERTON 5-5-1L AWB Ref Wellpath: SILVERTON 5-5-1L AWP**

String/Diameter	Start MD [ft]	End MD [ft]	Interval [ft]	Start TVD [ft]	End TVD [ft]	Start N/S [ft]	Start E/W [ft]	End N/S [ft]	End E/W [ft]
9.625in Casing Surface	23.00	1591.00	1568.00	23.00	1588.42	0.00	0.00	43.30	-7.14

## REFERENCE WELLPATH IDENTIFICATION

Operator	CONFLUENCE RESOURCES	Well	SILVERTON 5-5-1L
Field	WELD COUNTY (NAD83, TRUE NORTH)	API	0512348440
Facility	SEC.04-T04N-R63W	Wellbore	SILVERTON 5-5-1L AWB
Slot	SLOT#09 SILVERTON 5-5-1L (2673'FSL & 255'FWL,SEC.04)		

## TARGETS

Name	TVD [ft]	North [ft]	East [ft]	Grid East [US ft]	Grid North [US ft]	Latitude	Longitude	Shape
SEC.04-T04N-R63W	-2.00	196.73	2.79	3292259.81	1369035.30	40.3416600	-104.4515100	polygon
	2D Polygon: dimensions not calculated							
SEC.05&06-T04N-R63W HARDLINES 470'N/S & 470'E/W	-2.00	196.73	2.79	3292259.81	1369035.30	40.3416600	-104.4515100	polygon
	2D Polygon: dimensions not calculated							
SEC.05-T04N-R63W	-2.00	196.73	2.79	3292259.81	1369035.30	40.3416600	-104.4515100	polygon
	2D Polygon: dimensions not calculated							
SEC.06-T04N-R63W	-2.00	196.73	2.79	3292259.81	1369035.30	40.3416600	-104.4515100	polygon
	2D Polygon: dimensions not calculated							
SILVERTON 5-5-1L LP REV-1(2220'FNL & 470'FEL,SEC.05)	6352.00	535.54	-716.41	3291536.69	1369365.58	40.3425900	-104.4540900	point
SILVERTON 5-5-1L BHL REV-1 (2173'FNL & 405'FWL,SEC.06)	6488.00	585.00	-10196.96	3282056.63	1369302.93	40.3427200	-104.4881000	point

## WELLPATH COMPOSITION - Ref Wellbore: SILVERTON 5-5-1L AWB Ref Wellpath: SILVERTON 5-5-1L AWP

Start MD [ft]	End MD [ft]	Positional Uncertainty Model	Log Name/Comment	Wellbore	Survey Date
23.00	1530.50	OWSG MWD rev2 - Standard	OWSG MWD rev2 - Standard <110.5 - 1530.5>	SILVERTON 5-5-1L AWB	9/30/2020
1530.50	16220.00	BH AutoTrak Curve/eXpress (2019) (Short spacing)	BH AutoTrak Curve (2019) (Short spacing) <1613 - 16196>	SILVERTON 5-5-1L AWB	12/15/2020

# Actual Wellpath Report

SILVERTON 5-5-1L AWP

Page 10 of 10

## REFERENCE WELLPATH IDENTIFICATION

Operator	CONFLUENCE RESOURCES	Well	SILVERTON 5-5-1L
Field	WELD COUNTY (NAD83, TRUE NORTH)	API	0512348440
Facility	SEC.04-T04N-R63W	Wellbore	SILVERTON 5-5-1L AWB
Slot	SLOT#09 SILVERTON 5-5-1L (2673'FSL & 255'FWL,SEC.04)		

## WELLPATH COMMENTS

MD [ft]	Inclination [°]	Azimuth [°]	TVD [ft]	Comment
1530.50	7.800	354.600	1528.51	TIE TO 3RD PARTY SURFACE SURVEYS
1613.00	8.380	352.500	1610.18	FIRST BH MWD SURVEY
16196.00	89.940	269.320	6495.31	LAST BH MWD SURVEY
16220.00	89.940	269.320	6495.33	PROJECTION TO BIT