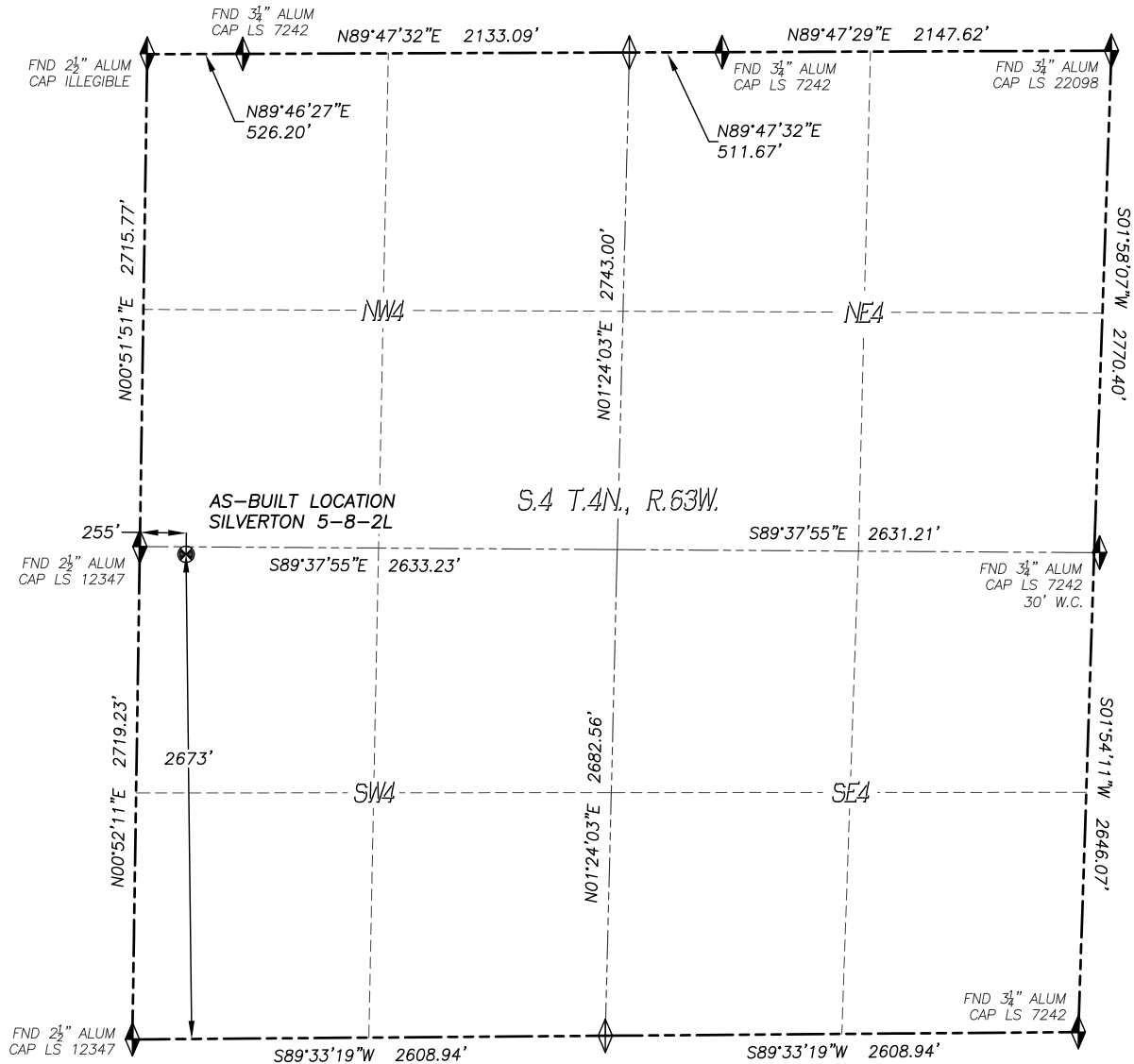


WELL AS-BUILT SURVEY SILVERTON 5-8-2L

SECTION 4, TOWNSHIP 4 NORTH, RANGE 63 WEST OF THE 6TH P.M., WELD COUNTY

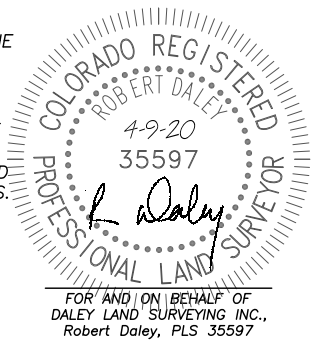


IN ACCORDANCE WITH A REQUEST FROM CONFLUENCE RESOURCES, DALEY LAND SURVEYING, INC. HAS DETERMINED THE SURFACE LOCATION OF THE SILVERTON 5-8-2L WELL TO BE 2673' FSL, 255' FWL, AS MEASURED AT NINETY (90) DEGREES FROM THE SECTION LINES OF SECTION 4, TOWNSHIP 4 NORTH, RANGE 63 WEST, OF THE 6TH PRINCIPAL MERIDIAN, WELD COUNTY, COLORADO.

I HEREBY STATE THAT THIS WELL AS-BUILT SURVEY WAS PREPARED BY ME OR UNDER MY DIRECT SUPERVISION, THAT THE WORK WAS COMPLETED ON 4/7/2020 FOR AND ON BEHALF OF CONFLUENCE RESOURCES, AND THAT THIS MAP DOES NOT REPRESENT A BOUNDARY SURVEY, IT IS NOT A LAND SURVEY PLAT OR AN IMPROVEMENT SURVEY PLAT AND IT IS NOT TO BE RELIED UPON FOR THE ESTABLISHMENT OF FENCE, BUILDING OR OTHER FUTURE IMPROVEMENT LINES.

NOTES:

- 1) BEARINGS FOR THIS MAP ARE ASSUMED AND REFERENCED TO THE WEST LINE OF THE NORTHWEST QUARTER OF SECTION 4, T.4N., R.63W.
- 2) HORIZONTAL DATUM IS NAD83.
- 3) VERTICAL DATUM IS NAVD88 AND ORIGINATES FROM THE LOCAL C.O.R.S. NETWORK, UTILIZING THE GEOID12A MODEL.
- 4) INST. OPERATOR: KYLE DALEY



NAD 83 LATITUDE AND LONGITUDE

SURFACE LOCATION:

LATITUDE: N40.34112°
LONGITUDE: W104.45152°
ELEV.: 4625'
PDOP.: 1.7
QTR/QTR: NW4/SW4

LEGEND

- ◆ FOUND MONUMENT
- ◇ CALCULATED POSITION
- ☀ PROPOSED WELL
- BOTTOM HOLE
- ⊙ ABANDONED WELL
- ⊗ EXISTING WELL

