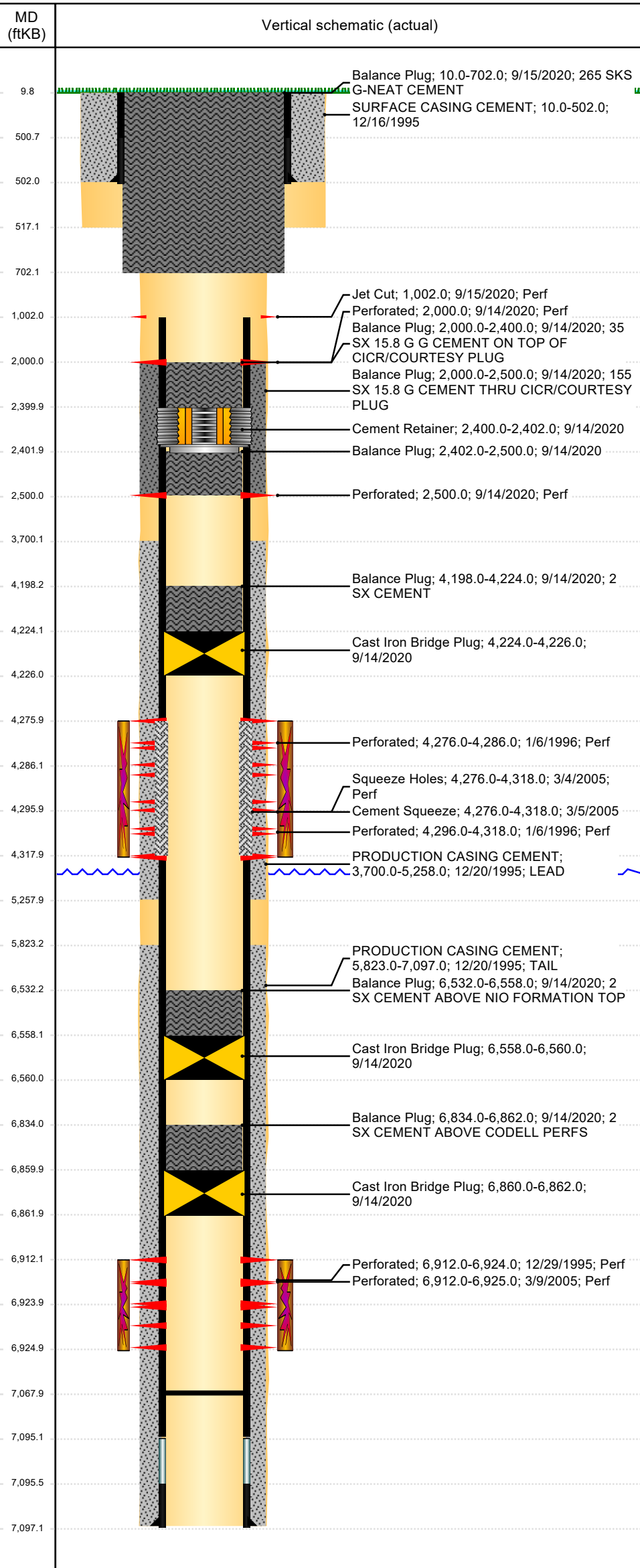


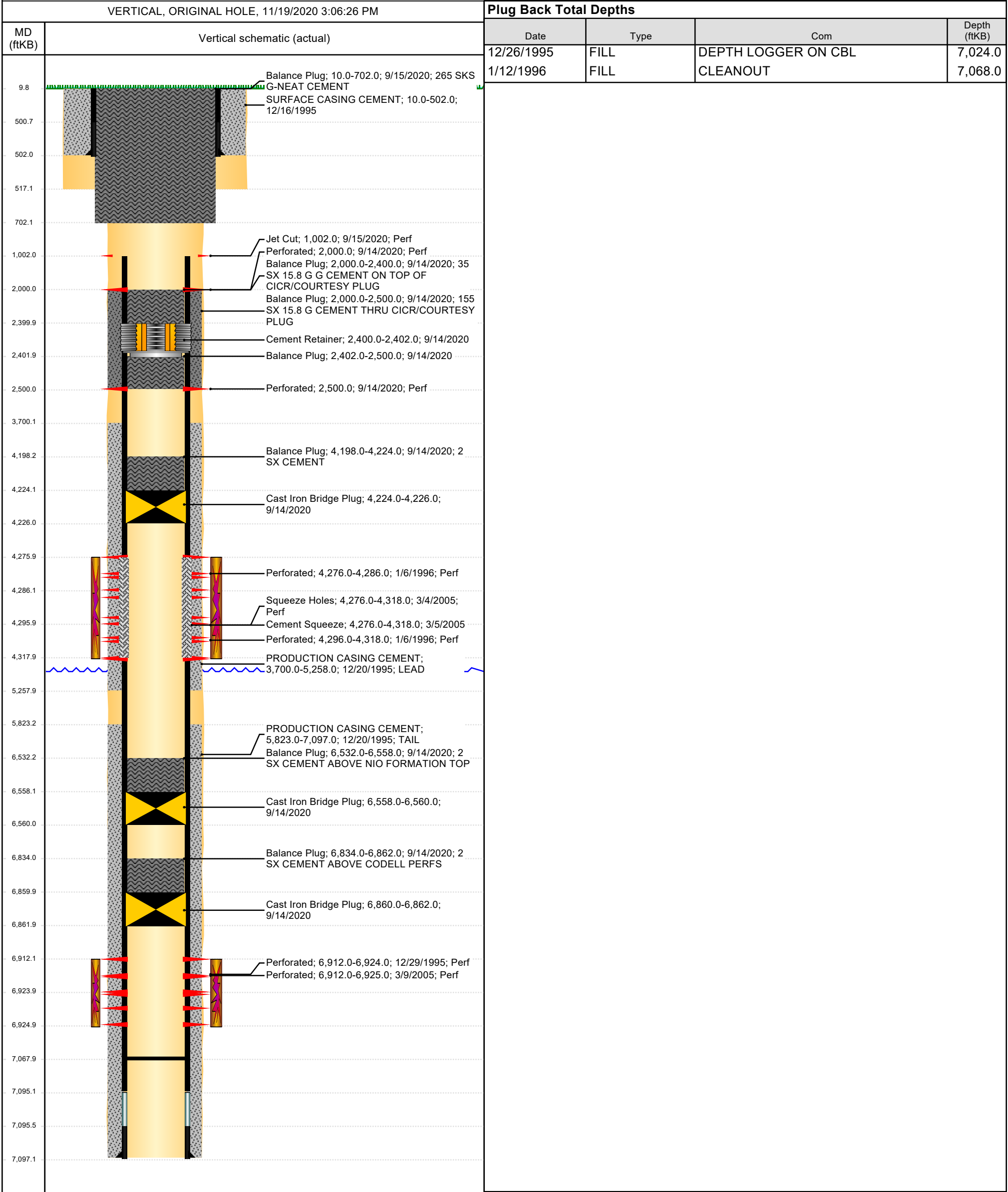
Well Name: GITTLEIN D09-07

VERTICAL, ORIGINAL HOLE, 11/19/2020 3:06:26 PM



Well Header									
API 05-123-19016		Business Unit DJ BASIN			District 15		Well Configuration Type VERTICAL		
KB - GL / MSL (ftKB) 10.00		Spud Date 12/16/1995		P & A Date 11/12/2020		Well Production Status PA			SoRT Yes
Comment DISCREPANCY TD = 7083, PROD CSG SET @ 7097'. 3/13/05 did not tag @ 6983', leaving 59' of rat hole. Sporadic and poor quality cement bond from 4470-6050'.									
Surface Location (Congressional)									
Quarter 3 SW	Quarter 4 NE	Section 9	Township 3	Twnshp N N	Range 64	Rng E/W W	Actual Latitude (°) 40.24148195	Actual Longitude (°) -104.55427626	
Wellbore Sections									
Section Des			Size (in)			Act Top, MD (ftKB)		Act Btm, MD (ftKB)	
SURFACE			12 1/4			10		517	
PRODUCTION			6 1/4			517		7,097	
Casing Strings									
Csg Des			Run Date		OD (in)	Wt/Len (lb/ft)	Grade	Top, MD (ftKB)	MD (ftKB)
Surface			12/16/1995		8 5/8	24.00	J-55	10.0	502.0
Production			12/20/1995		4 1/2	11.60	J-55	10.0	7,097.0
Cement									
Des					Start Date		Top (ftKB)		Btm (ftKB)
SURFACE CASING CEMENT					12/16/1995		10.0		502.0
PRODUCTION CASING CEMENT					12/20/1995		3,700.0		5,258.0
PRODUCTION CASING CEMENT					12/20/1995		5,823.0		7,097.0
Cement Squeeze					3/5/2005		4,276.0		4,318.0
Balance Plug					9/14/2020		6,834.0		6,862.0
Balance Plug					9/14/2020		2,000.0		2,500.0
Balance Plug					9/14/2020		2,000.0		2,400.0
Balance Plug					9/14/2020		2,402.0		2,500.0
Balance Plug					9/14/2020		6,532.0		6,558.0
Balance Plug					9/14/2020		4,198.0		4,224.0
Balance Plug					9/15/2020		10.0		702.0
Zone Statuses									
Zone Name	Status Date	Status	Fluid Type	Job				Prod Method	
SUSSEX	3/5/2005	AB		RE-FRAC, 3/3/2005 00:00				Flowing	
SUSSEX	9/14/2020	P&A		PLUG AND ABANDON, 9/11/2020 07:00					
CODELL	4/25/2005	PR		RE-FRAC, 3/3/2005 00:00					
CODELL	9/14/2020	P&A		PLUG AND ABANDON, 9/11/2020 07:00					
Perforation Data									
Linked Zone		Bnch/Stg	Entered Shot Total	Top (ftKB)		Btm (ftKB)		Date	
SUSSEX, ORIGINAL HOLE SUSSEX, ORIGINAL HOLE SUSSEX, ORIGINAL HOLE CODELL, ORIGINAL HOLE CODELL, ORIGINAL HOLE			11 23 25 52	1,002.00		1,002.00		9/15/2020	
				2,000.00		2,000.00		9/14/2020	
				2,500.00		2,500.00		9/14/2020	
				4,276.00		4,318.00		3/4/2005	
				4,276.00		4,286.00		1/6/1996	
				4,296.00		4,318.00		1/6/1996	
				6,912.00		6,924.00		12/29/1995	
6,912.00		6,925.00		3/9/2005					
Stimulation Intervals									
Zone			Start Date			Top (ftKB)		Btm (ftKB)	
SUSSEX, ORIGINAL HOLE			1/9/1996			4,276.0		4,318.0	
CODELL, ORIGINAL HOLE			12/29/1995			6,912.0		6,924.0	
CODELL, ORIGINAL HOLE			3/11/2005			6,912.0		6,925.0	
Other In Hole									
Run Date	Des				Make		OD (in)	Top (ftKB)	Btm (ftKB)
9/14/2020	Cast Iron Bridge Plug						4	6,860.0	6,862.0
9/14/2020	Cement Retainer						4	2,400.0	2,402.0
9/14/2020	Cast Iron Bridge Plug						4	6,558.0	6,560.0
9/14/2020	Cast Iron Bridge Plug						4	4,224.0	4,226.0
Logs									
Date		Type				Top, MD (ftKB)		Btm, MD (ftKB)	
12/20/1995		COMPENSATED DENSITY				3,700.0		7,093.0	
12/20/1995		INDUCTION				502.0		4,600.0	
12/26/1995		CEMENT BOND				3,600.0		7,031.0	

Well Name: GITTLEIN D09-07



Page 2/2

Report Printed: 11/19/2020