

talonlpe.com • 866.742.0742



**Razor 27I  
Confirmation Sampling  
Project # 701530.054.07**

January 22, 2020

**Prepared By:**

Talon/ LPE  
1811 East Mulberry Street  
Fort Collins, CO 80524

**Prepared For:**

**Whiting Oil and Gas Corporation**

# Table of Contents

## Contents

<b>1</b>	<b>Introduction .....</b>	<b>1</b>
<b>2</b>	<b>Chronology of Events.....</b>	<b>1</b>
<b>3</b>	<b>Western Excavation Area (2017 Release) .....</b>	<b>5</b>
3.1	<i>Excavation.....</i>	<i>5</i>
3.2	<i>Soil Borings .....</i>	<i>6</i>
3.3	<i>Rock Crushing and Sampling .....</i>	<i>7</i>
<b>4</b>	<b>Northern Excavation Area (2017 Release).....</b>	<b>7</b>
4.1	<i>Excavation.....</i>	<i>7</i>
4.2	<i>Rock Crushing and Sampling .....</i>	<i>8</i>
<b>5</b>	<b>Eastern Excavation (2019 Release) .....</b>	<b>8</b>
5.1	<i>Excavation.....</i>	<i>8</i>
5.2	<i>Rock Crushing and Sampling .....</i>	<i>9</i>
<b>6</b>	<b>Co-Mingled Soil (2017 &amp; 2019 Releases) .....</b>	<b>9</b>
6.1	<i>Excavation.....</i>	<i>9</i>
6.2	<i>Rock Crushing and Sampling .....</i>	<i>10</i>
<b>7</b>	<b>Summary .....</b>	<b>10</b>

Attachment 1 - Figures

Attachment 2 - Tables

## 1 Introduction

Talon/LPE (Talon) was retained by Whiting Petroleum (Whiting) to conduct environmental consulting services that included soil confirmation sampling at the Razor 27I tank battery (Site) in Weld County, Colorado. The purpose of this report is to document site activities including excavation, soil sampling, and soil borings. Where impacts were discovered, Talon completed soil sampling at discrete depths to ensure that all impacted soils had been identified and documented per the Colorado Oil and Gas Conservation Commission (COGCC) regulations. A topographic map of the site location is presented as Figure 1.

## 2 Chronology of Events

March 28, 2017	<ul style="list-style-type: none"> <li>• <b>Initial release</b> observed at the site (2017 Eastern)</li> <li>• Notification to COGCC of crude oil release</li> <li>• Emergency cleanup activities: hydro-vac, excavation</li> <li>• Excavation and soil sampling within pot-holes to determine excavation extent</li> </ul>
April-June, 2017	<ul style="list-style-type: none"> <li>• Decommissioned Batteries Removed</li> <li>• Infrastructure removed to allow for excavation</li> </ul>
July-September, 2017	<ul style="list-style-type: none"> <li>• Infrastructure removal</li> <li>• Mechanic Excavations Commenced</li> </ul>
January, 2018	<ul style="list-style-type: none"> <li>• Soil Sample Collection within excavation</li> </ul>
March 20, 2018	<ul style="list-style-type: none"> <li>• Confirmation soil samples have delineated the extent of impacts within the (2017 Eastern) excavation horizontally and vertically to the East, South, West, and Northwest</li> <li>• 18,000 cubic yards were excavated and stockpiled on the site</li> <li>• Whiting contractors begin crushing the stockpiled material</li> <li>• Further delineation required to the Northeast, but was prohibited due to infrastructure</li> </ul>
March 29, 2018	<ul style="list-style-type: none"> <li>• Talon begins sampling crushed rock for BTEX, TPH analysis</li> </ul>
April 18, 2018	<ul style="list-style-type: none"> <li>• Talon oversaw drilling of two (2) soil borings to the north and northeast of the excavation, impacts observed</li> </ul>
May 7-8, 2018	<ul style="list-style-type: none"> <li>• Talon oversaw drilling of three (3) soil borings to the north of the first two borings, impacts observed</li> </ul>
May 17, 2018	<ul style="list-style-type: none"> <li>• Talon gauged the five (5) soil borings.</li> <li>• Groundwater was indicated in SB-4 and SB-5 at 21.4 and 26.75 ft bgs, respectively</li> </ul>

May 29, 2018	<ul style="list-style-type: none"> <li>• Talon oversaw drilling of three (3) soil borings.</li> <li>• Analytical results below laboratory detection limits, so soil borings were plugged and abandoned</li> </ul>
May 31, 2018	<ul style="list-style-type: none"> <li>• Talon finished sampling crushed rock material (2017 Western Excavation)</li> <li>• Two of one-hundred and eighty samples had elevated TPH results above regulatory standards upon initial sampling, these areas were segregated and allowed to volatilize further; upon resampling, both samples were below regulatory standards.</li> </ul>
June 12, 2018	<ul style="list-style-type: none"> <li>• Talon gauged all five (5) soil borings. SB-5 indicated the presence of water at 24.98 ft bgs, groundwater sample was collected and analyzed for BTEX at Summit. Analytical results for benzene were above regulatory standards</li> <li>• Talon recommended an excavation area to the north of the original excavation based on analytical results from the eight (8) soil borings</li> </ul>
June 14, 2018	<ul style="list-style-type: none"> <li>• Talon notified Whiting the crushed rock material from the excavation may be utilized as backfill</li> </ul>
August, 2018	<ul style="list-style-type: none"> <li>• Whiting contractors <b>begin Northern excavation</b> (2017 Release) near soil borings to remove impacted areas</li> <li>• Area between 2017 (Western) excavation and 2017 (Northern) excavations left in place due to infrastructure</li> </ul>
August 29, 2018	<ul style="list-style-type: none"> <li>• Talon begins soil sampling of 2017 (Northern) excavation</li> </ul>
September - October, 2018	<ul style="list-style-type: none"> <li>• Continuing Mechanic Excavations following Impacted soil 2017 (Northern) Excavation</li> </ul>
January 16, 2019	<ul style="list-style-type: none"> <li>• Talon completes sampling of 2017 (Northern) excavation (Phase one)</li> <li>• 2017 (Northern) excavation is delineated vertically and horizontally except for area between 2017 Western and Northern excavations, which was left in place due to infrastructure (referred to as Co-Mingled area)</li> </ul>
March 6, 2019	<ul style="list-style-type: none"> <li>• <b>New crude release</b> (2019 Eastern) observed at the site associated with the recycle line that comes off one of the oil process vessels</li> <li>• Emergency recovery activities commenced via hydro-vac</li> </ul>
March 21, 2019	<ul style="list-style-type: none"> <li>• Talon collected soil samples near the source area of the new release</li> <li>• A total of 27 soil samples were collected from depths ranging from 0 to 1.5 ft bgs</li> <li>• Analytical results above regulatory standards</li> </ul>

April 1, 2019	<ul style="list-style-type: none"> <li>• Follow-up soil sampling following further excavation in areas of regulatory exceedances from prior sampling</li> <li>• A total of nine (9) samples were collected up to depths of 2 ft bgs</li> <li>• Analytical results above regulatory standards</li> </ul>
April 5, 2019	<ul style="list-style-type: none"> <li>• Whiting contractors dig exploratory holes with excavator for Talon to sample the subsurface in an effort to delineate the impacts vertically</li> <li>• A total of 15 samples were collected from holes at depths ranging from 1 to 4 ft bgs. Several holes were unable to dig further than 1 ft due to compact material.</li> <li>• Analytical results above regulatory levels</li> <li>• Whiting contractors removed building where spill occurred based on soil sample results</li> </ul>
April 29, 2019	<ul style="list-style-type: none"> <li>• Talon takes initial soil samples around the removed building location where the release occurred, (SS-1 to SS-6)</li> <li>• Samples are taken at ground level through 3 ft bgs</li> </ul>
April 30, 2019	<ul style="list-style-type: none"> <li>• Whiting contractors begin excavating material from areas where infrastructure was removed</li> <li>• Talon collects soil samples from excavation to delineate horizontal and vertical impacted areas</li> </ul>
May 14, 2019	<ul style="list-style-type: none"> <li>• Talon collected soil samples from excavation stockpile</li> <li>• Continued sampling stockpile through June 20, 2019</li> </ul>
June 13, 2019	<ul style="list-style-type: none"> <li>• Whiting contractors excavated exploratory trenches with the goal of delineating the horizontal extent of impacts in the subsurface</li> <li>• Samples SS-29 through SS-32 were collected and submitted for lab analysis, Results show that concentrations are above COGCC Table 910-1 limits except for SS-29</li> <li>• Excavation continues to remove material past the extent represented by these exploratory samples</li> </ul>
August 14, 2019	<ul style="list-style-type: none"> <li>• <b>Horizontal and vertical delineation of East excavation (2019 Release) is achieved.</b></li> <li>• Total of 110 soil samples were collected from East excavation over length of the project</li> </ul>
August 21, 2019	<ul style="list-style-type: none"> <li>• Talon began collecting samples on crushed rock material taken from the East and North excavations</li> <li>• Samples are labeled as A1, B1, C1, D1 for their respective locations</li> </ul>

August 22, 2019	<ul style="list-style-type: none"> <li>• <b>Sampling began on the area separating the West (2017 release) and North (2019 release) excavations</b> (Co-Mingled area)</li> <li>• Sampling and excavation activities continue towards the east.</li> </ul>
August 29, 2019	<ul style="list-style-type: none"> <li>• Talon finished sampling on crushed rock material taken from the North and East excavations (2017 &amp; 2019 releases)</li> <li>• A total of 279 samples were collected and analyzed by Summit Results shown in Table 2</li> <li>• Analytical results below regulatory standards</li> </ul>
September 6, 2019	<ul style="list-style-type: none"> <li>• Talon began collecting samples on overburden (OB) samples taken from the North and East excavations (2017 &amp; 2019 releases)</li> </ul>
September 13, 2019	<ul style="list-style-type: none"> <li>• Talon finished collecting overburden samples of material taken from the North and East excavations (2017 &amp; 2019 releases)</li> <li>• A total of 22 samples were collected and analyzed by Summit. (OB-1 through OB-21 shown in Table 1)</li> <li>• Analytical results below regulatory standards</li> </ul>
September 30, 2019	<ul style="list-style-type: none"> <li>• <b>Talon observes the West/North excavation combining with the extent of the East excavation.</b></li> <li>• The first samples collected in the gap are labeled BWE and BWB</li> </ul>
October 17, 2019	<ul style="list-style-type: none"> <li>• Talon began collecting overburden samples of material from the “Co-mingled” excavation.</li> <li>• These samples begin at label OB-22 in Table 2</li> </ul>
November 4, 2019	<ul style="list-style-type: none"> <li>• <b>Excavation and Sampling activities pertaining to the extent of impacts and excavation of Talon concluded in the “Co-mingled” area</b> The final sample collected is labeled BH-9 on this date</li> <li>• Analytical results below regulatory standards, <b>delineating the horizontal and vertical extent of impacts of all excavations at site</b></li> </ul>
November 13, 2019	<ul style="list-style-type: none"> <li>• Talon finished collecting overburden samples of material taken from the “Co-mingled” excavation.</li> <li>• A total of 23 samples were collected and analyzed by Summit. (OB-22 through OB-44 in Table 21)</li> <li>• Analytical results below regulatory standards</li> </ul>
November 19 and 25, 2019	<ul style="list-style-type: none"> <li>• Talon collected soil samples from the Impacted Stockpile from the “Co-mingled” (2017 and 2019 Releases) North excavation.</li> <li>• Samples are labeled IS-1 through IS-126 in Table 2</li> <li>• Analytical results below regulatory standards.</li> </ul>
November 27,	<ul style="list-style-type: none"> <li>• Regulatory agency COGCC agrees to allow backfilling to the</li> </ul>

2019	remaining Northern excavations
------	--------------------------------

### 3 Western Excavation Area (2017 Release)

Whiting notified the COGCC on March 28, 2017, immediately following identification of the leak. Whiting submitted the required Form 19 electronically (Initial and Supplemental) to the COGCC on March 29, 2017, documenting applicable information at the time (Spill Report Documents 401245981 & 401251995). The Site is identified by the COGCC as Spill/Release Point ID 449810.

A crude oil release occurred during the morning hours of March 28, 2017, due to a rupture in a poly line as a result of excess pressure caused by a closed valve and an automated recycle pump operation. The line was isolated and the pump was shut off immediately after the discovery to avoid additional leakage.

The source area was immediately excavated and the ruptured line was exposed. Whiting personnel estimated that approximately 107 barrels (bbls) were released and approximately seven (7) bbls were recovered during emergency response activities, which included hydro-vacuum (hydro-vac) operations and excavating activities by Whiting contractor M&E.

#### 3.1 Excavation

As part of Whiting's remediation plans for Razor 27I, the subsurface flowlines, tank batteries, and associated equipment near the source area were removed. Following the removal of infrastructure, excavation activities commenced, and impacted soils were stockpiled on site.

Excavation activities proceeded based on visual and olfactory observations in the field as well as confirmation soil samples analyzed for benzene, toluene, ethylbenzene, total xylenes (BTEX) and total petroleum hydrocarbons (TPH) at Summit Scientific Laboratory (Summit) in Golden, Colorado. During excavation activities, a lithologic layer of highly fractured semi-consolidated silty sand was observed at approximately 10-15 feet bgs. This layer served as a horizontal preferential flow pathway. Directly below this layer is a confining layer of hard siltstone, which prevented the downward migration of the crude oil.

Sampling activities in the Western excavation were completed in March of 2018. Within the Western excavation a total of 36 soil samples were collected and submitted to Summit Scientific Golden, CO, (Summit) for analysis of BTEX and TPH. The analytical results from the samples collected on indicated horizontal and vertical delineation had been achieved, with the exception of the area between the initial excavation and the Northern excavation, this area is referred to as the "Co-Mingled". This area could not be excavated or sampled due to underground piping lines and

aboveground infrastructure.

As of March 20, 2018, approximately 18,000 cubic yards had been excavated and stockpiled at the site. Confirmation soil samples collected within the excavated area showed the extent of impacts was horizontally and vertically delineated to the east, south, west, and northwest; further delineation was needed to the northeast. Figure 2 shows the soil sampling locations and Table 1 details all sample analytical results. Figure 3 shows the extent of the Initial 2017 crude release, the 2019 crude release and the Co-Mingled (2017 & 2019 releases).

### **3.2 Soil Borings**

Further excavation to the north was prohibited due to the presence of underground high voltage power lines as well as building structures. On April 18, 2018, Talon oversaw the drilling of two (2) soil borings (SB-1 and SB-2) to the north. Crude oil and strong odors were observed within the borings consistent with impacts observed within the excavation. Soil samples were collected and submitted to Summit for analysis of BTEX and TPH. Analytical results showed impacts above regulatory standards at between 14-22 feet below ground surface (ft bgs).

On May 7, 2018, Talon oversaw the drilling of three (3) soil borings (SB-3 through SB-5). Impacts were again observed, and soil samples indicated impacts above regulatory standards between 14-29 ft bgs.

On May 17, 2018, Talon gauged the five (5) soil borings (SB-1 through SB-5). Groundwater was observed in SB-4 and SB-5 at 21.4 and 26.75 ft bgs, respectively. The borings were purged to see if the water would recharge within the borings.

On May 29, 2018, Talon oversaw the drilling of three (3) additional soil borings (SB-6 through SB-8). Analytical results from soil samples from these borings were all below laboratory detection limits. Therefore, the borings were plugged and abandoned.

On June 12, 2018, Talon returned to the site to gauge all five (5) borings. Groundwater was observed within SB-5 at 24.98 ft bgs, so a groundwater sample was collected and analyzed for BTEX at Summit. The analytical result for benzene was above the regulatory standards; all remaining results were below regulatory standards.

Based on sample results, Talon made a recommendation for further excavation to the north of the original excavation.



### **3.3 Rock Crushing and Sampling**

Following delineation of the initial excavation, Whiting contractors began to rock crush the excavated and stockpiled material, which was primarily semi-consolidated siltstone. The purpose of the rock crushing was to increase surface area and volatilization of hydrocarbon impacts of the material. Crushed material was then stockpiled and allowed to continue volatilization. Talon then collected soil samples from the crushed material at a rate of one five-part composite sample per every 100 cubic yards of material. The collected samples were submitted to Summit for analysis of TPH. Sampling activities occurred between March through May, 2018. Two samples initially had analytical results above regulatory standards; those piles were segregated and allowed to volatilize further, then resampled. The secondary samples for these two piles had analytical results below regulatory standards (See Table 2).

Once all samples passed regulatory standards, the crushed rock material was then utilized as backfill in the excavated area.

## **4 Northern Excavation Area (2017 Release)**

In August 2018, Whiting contractors began excavating the area to the north of the 2017 release-Western excavation. The excavation began in the area which Talon recommended based on the soil boring data, and continued based on field observations and soil analytical results.

### **4.1 Excavation**

As part of Whiting's remediation plans for Razor 27I, the subsurface flowlines, tank batteries, and associated equipment near the source area were removed. Following the removal of infrastructure, excavation activities commenced, and impacted soils were stockpiled on site to be crushed once the impact extent was delineated and the excavation completed.

Sampling activities in the first phase of the Northern excavation were completed on January 16, 2019. Over the course of the first phase, a total of 34 soil samples were collected and submitted to Summit for analysis of BTEX and TPH. The analytical results from the samples collected on January 16, 2019 indicated horizontal and vertical delineation had been achieved, with the exception of the area between the initial excavation and the Northern excavation; this area is referred to as the "Co-Mingled" area. This area could not initially be excavated or sampled due to underground piping lines and aboveground infrastructure.

Whiting planned on in-situ treatment of the soil to retain the infrastructure, although after the 2019 release, and subsequent excavation of the Eastern portion of the Razor 27I site, the infrastructure was removed and excavation continued on the 2017 release site (North Excavation 2017 Release, Second Phase on Table 1). Over the course of the second phase, a total of 9 soil samples were

collected and submitted to Summit for analysis of BTEX and TPH. The analytical results from the samples collected on September 24, 2019 indicated horizontal and vertical delineation had been achieved.

#### ***4.2 Rock Crushing and Sampling***

As the North excavation had not been delineated in its entirety, the excavated soil was stockpiled in anticipation of another rock-crushing event.

### **5 Eastern Excavation (2019 Release)**

On March 6, 2019, Whiting notified the COGCC of a crude oil release, immediately following identification of the leak. Whiting submitted the required Form 19 electronically (Initial) to the COGCC on March 6, 2019, and Supplemental on March 15, 2019 documenting applicable information at the time (Spill Report Documents 401963041 & 401973739). The Site is identified by the COGCC as Spill/Release Point ID 463124.

The crude oil release occurred at approximately 9:30 am of March 6, 2019, due to a recycle line connected to an oil process vessel. A crew was immediately dispatched to recover the crude oil and to remove the impacted soil inside the containment area. Available free product was immediately recovered via vacuum truck. The impacted soils on the surface were then removed via hand shoveling, hydro-vac truck, and mechanical excavation.

The free product had migrated into the pipe-chase backfill causing the impacts to go into the subsurface soils. The surface and subsurface equipment (pressure vessels, separators, piping, building, electrical, manifolds, etc.) were then removed to safely mechanically excavate the remaining impacted subsurface soils. The soils located at the pipe-chase were mechanically excavated, removed from the site and disposed of at a licensed landfill.

The impacts had migrated down to a confining layer at approximately 10-15 ft bgs, and spread horizontally through horizontal fractures in the rock above the confining layer.

#### ***5.1 Excavation***

As part of Whiting's remediation plans for Razor 27I Eastern excavation area, the subsurface flowlines, tank batteries, and associated equipment near the source area were removed. Following the removal of infrastructure, excavation activities commenced, and impacted soils were stockpiled on site.

Excavation activities proceeded based on visual and olfactory observations in the field as well as confirmation soil samples analyzed for BTEX and TPH at Summit. During excavation activities,

a lithologic layer of highly fractured semi-consolidated silty sand was observed at approximately 10-15 feet bgs. This layer served as a horizontal preferential flow pathway. Directly below this layer is a confining layer of hard siltstone, which prevented the downward migration of the crude oil.

Over the course of the 2019 excavation project, a total of 109 soil samples were collected within the excavated area and submitted to Summit for analysis of BTEX and TPH. The analytical results from these confirmation soil samples indicated the extent of impacts was horizontally and vertically delineated to the North, East and South; further delineation was needed to the West (referred to as the Co-mingled area). Figure 2 shows the soil sampling locations and Table 1 details all sample analytical results. Figure 3 shows the extent of the Initial 2017 crude release, the 2019 crude release and the Co-Mingled (2017 & 2019 releases).

## **5.2 Rock Crushing and Sampling**

Following the delineation of the 2019 release (Eastern) excavation area and the 2017 Northern, with the exception of the Co-mingled area, Whiting contractors performed rock crushing similar to the 2017 initial release excavation areas. Talon collected a total of 279 soil samples from the crushed rock, and 22 additional samples from stockpiled overburden material. The collected samples were submitted to Summit for analysis of TPH. Analytical results were below regulatory standards, indicating the material could be used for backfill (See Table 2).

## **6 Co-Mingled Soil (2017 & 2019 Releases)**

After the 2019 release Eastern excavation was delineated to the North, East and South, further delineation was needed to the West. This area is referred to as the Co-mingled area as it's located between the 2017 and 2019 areas of release, and we are unable to identify when this area was impacted, due to both above and below ground infrastructure.

### **6.1 Excavation**

In August 2019, the subsurface flowlines, tank batteries, and associated equipment near the Co-Mingled area were removed. Following the removal of infrastructure, excavation activities commenced in the Co-Mingled area. Excavation continued based on visual and olfactory observations. Over the course of the excavation activities on the Co-mingled area, a total of 8 soil samples were collected and submitted to Summit for analysis of BTEX and TPH. The analytical results from the samples collected on November 4, 2019 indicated horizontal and vertical delineation had been achieved, concluding sampling activities of the excavation. Impacted soils were stockpiled on site.

## **6.2 Rock Crushing and Sampling**

Following the delineation of the 2017 and 2019 release excavation areas, Whiting contractors began to rock crush the excavated and stockpiled material, which was primarily semi-consolidated siltstone. The purpose of the rock crushing was to increase surface area and volatilization of hydrocarbon impacts of the material. Crushed material was then stockpiled and allowed to continue volatilization. Between August through November, 2019, Talon collected soil samples from the crushed material at a rate of one five-part composite sample per every 100 cubic yards of material. The collected samples were submitted to Summit for analysis of TPH. Talon collected a total of 279 soil samples from the crushed rock, and 22 additional samples from stockpiled overburden material.

One overburden sample initially had analytical results above regulatory standards; that pile was segregated and allowed to volatilize further, then resampled. The secondary sample for that pile had analytical results below regulatory standards. Analytical results from the remaining samples were below regulatory standards, indicating the material could be used for backfill (See Table 2 for analytical results).

## **7 Summary**

In March of 2017, a crude release impacted the Western side on the Whiting Razor 27I pad and followed a preferential flow pathway under the ground surface. Excavation continued until horizontal and vertical extent of impacts were removed other than an area to the North due to infrastructure. Following excavation, the soil was sampled and the impacted soil was stockpiled and later remediated via rock crushing. The excavated soil, crushed rock, and the overburden have all passed COGCC Table 910-1 regulations and are deemed fit to backfill the excavation. Soil borings to the North exhibited further impacted soil; then excavation to the North of the infrastructure took place. After the Northern excavation was delineated in each direction, the excavated soil was stockpiled.

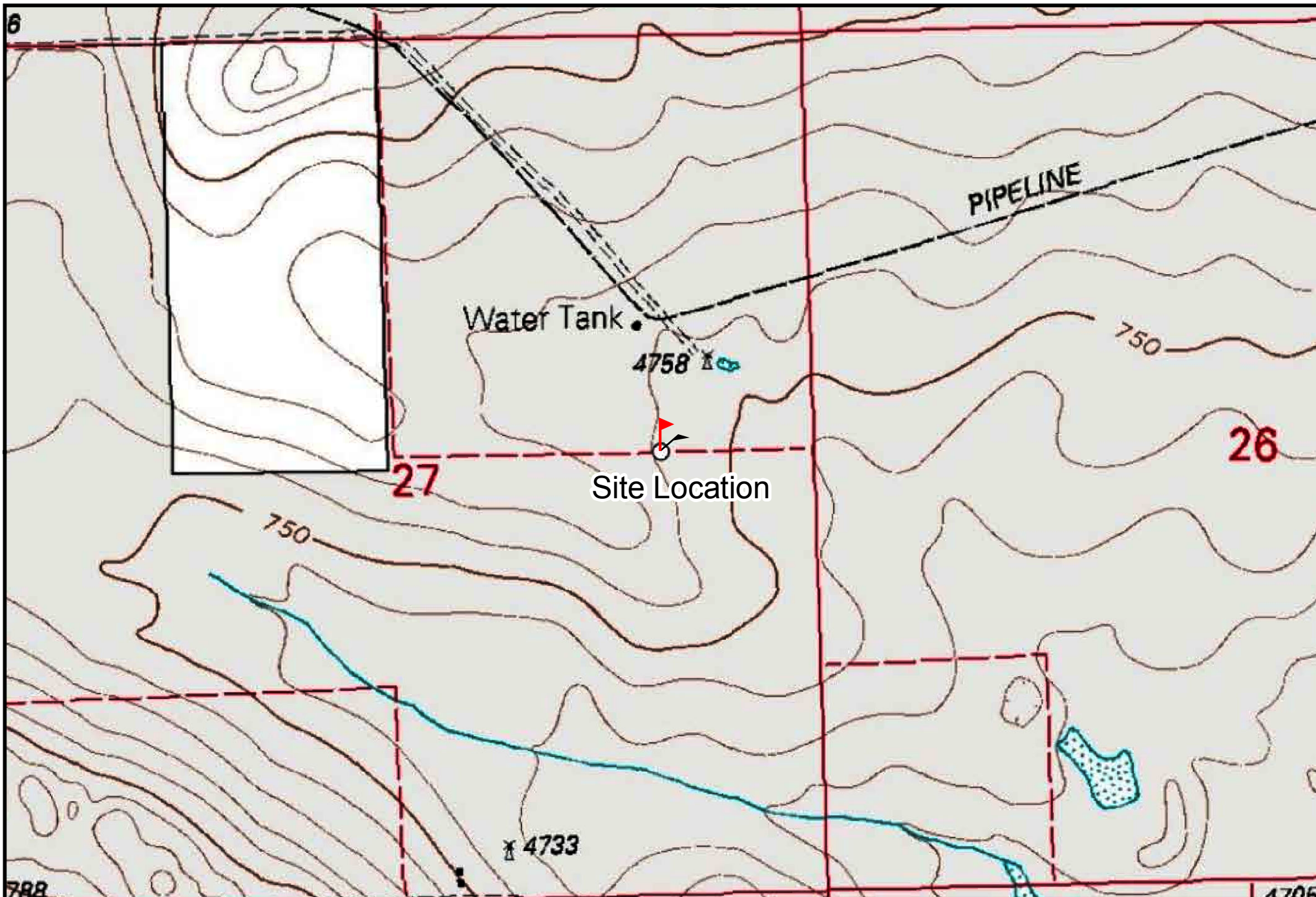
In March of 2019, a second crude release impacted the North side on the Whiting Razor 27I pad, and once again followed a preferential flow pathway under the ground surface. Excavation continued until horizontal and vertical extent of impacts were removed. Following excavation, the soil was sampled, and the impacted soil was stockpiled and later remediated via rock crushing, along with the stockpile from the Northern excavation. The excavated soil, crushed rock, and the overburden have all passed COGCC Table 910-1 regulations and are deemed fit to backfill the excavations.

The horizontal and vertical extent of impacts of the 2017 crude release and the 2019 crude release have been located, excavated, and remediated. All results from laboratory testing are now below

regulatory standards, indicating remediation of the site has been achieved, and all soil may be utilized for backfill of the excavations. Talon believes that no further corrective action is necessary, and that Whiting can request closure from the COGCC for the two releases.

**Attachment 1**  
**Figures**






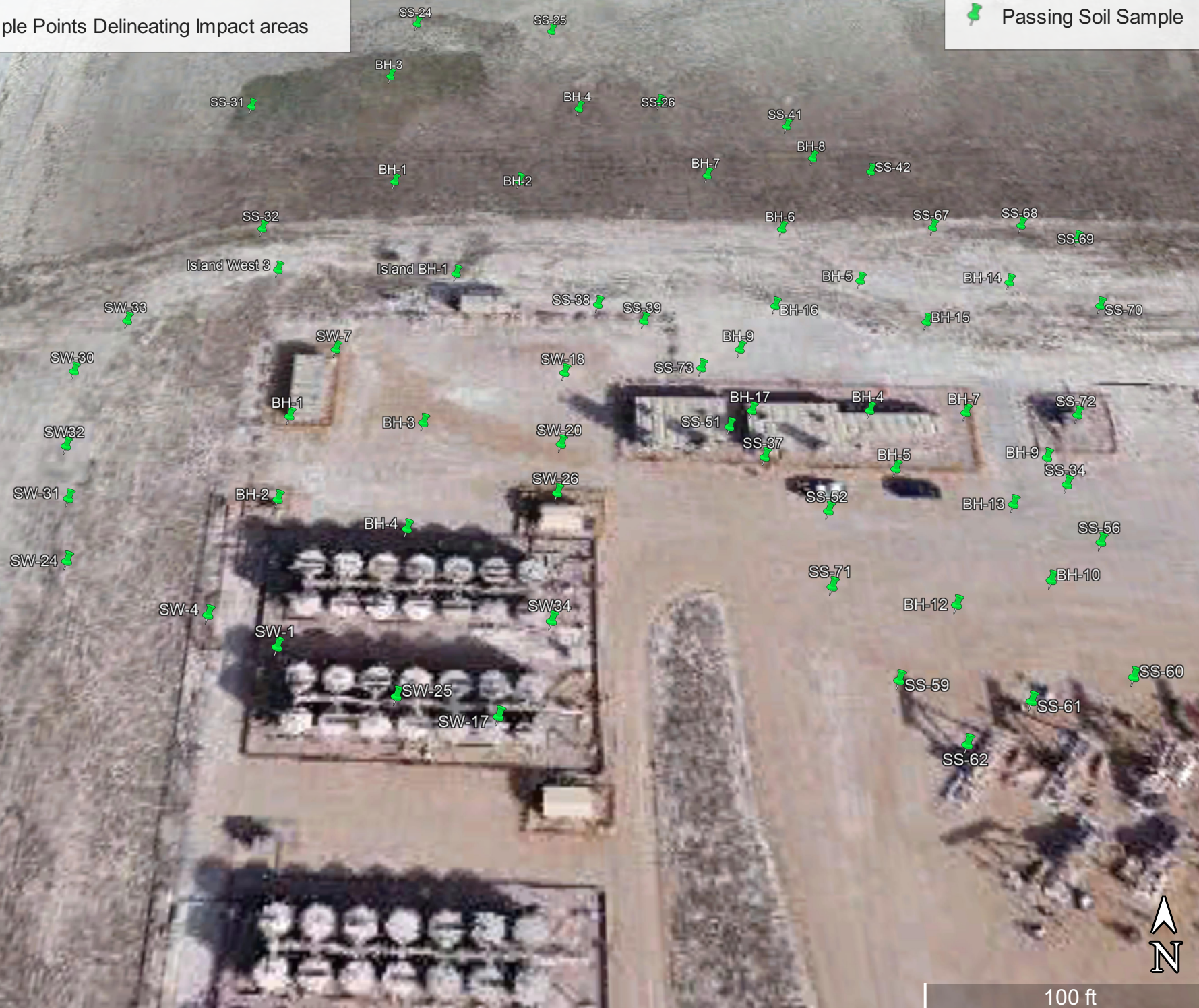
Drafted: 1/22/2020  
Map Scale 1:10,000  
Drafted By: JAL

Whiting Oil and Gas Corporation  
Razor 271  
Weld County, CO  
Figure 1 - Topographic Map



## Passing Soil Sample Points Delineating Impact areas

 Passing Soil Sample



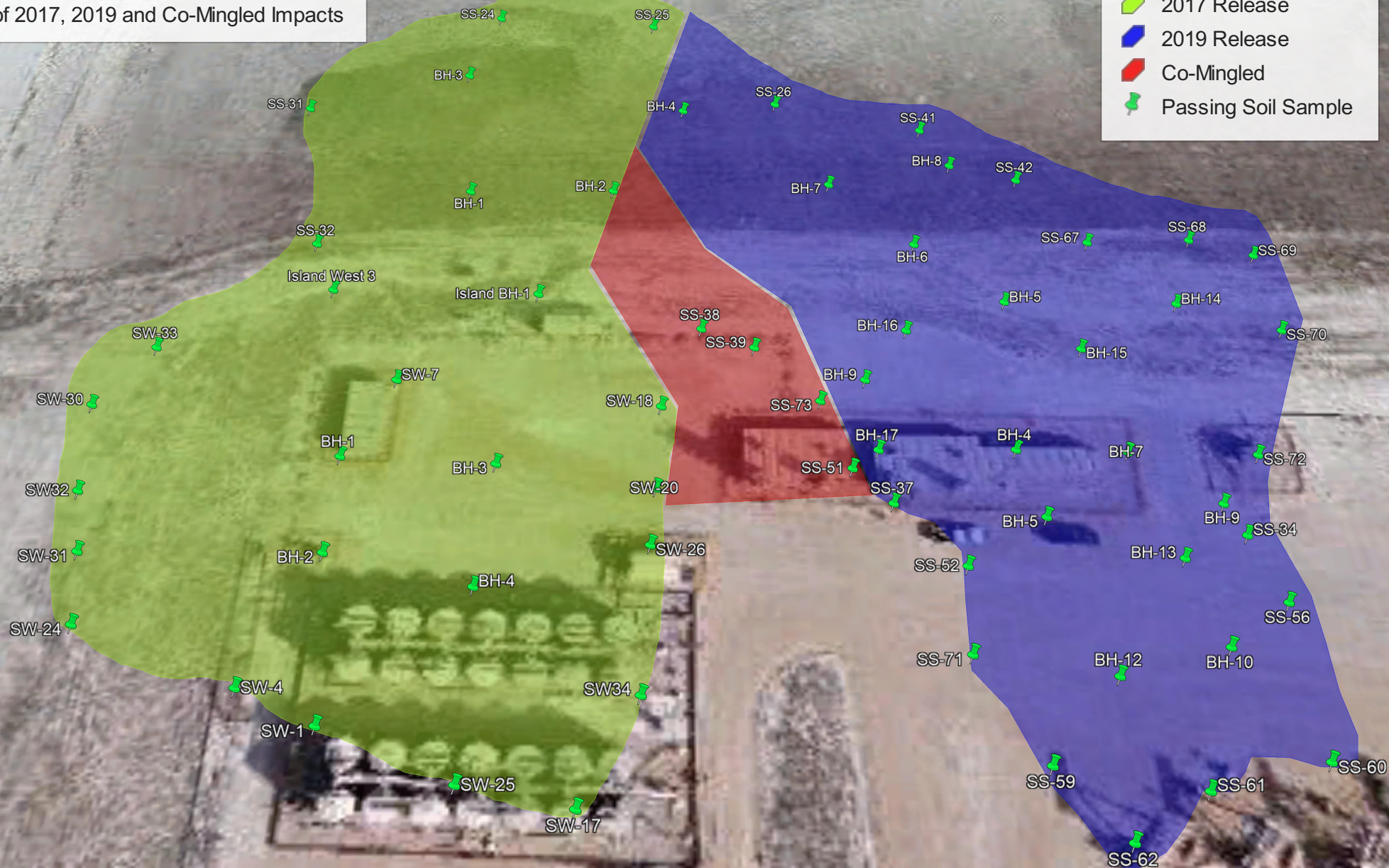


# Razor 27I

Area of 2017, 2019 and Co-Mingled Impacts

## Legend

- 2017 Release
- 2019 Release
- Co-Mingled
- Passing Soil Sample



100 ft

**Attachment 2**  
**Tables**



**Table 1 - Soil Analytical Data  
2017 / 2019 / Co-Mingled Excavations  
Whiting Oil & Gas Corporation  
Razor 27I  
Weld County, Colorado**

Sample ID	Depth BGS in Feet	Date Sampled	Concentration (mg/kg)						
			Benzene	Toluene	Ethylbenzene	Xylenes (Total)	GRO	DRO	TPH
COGCC Table 910-1 Concentration Levels			0.17	85	100	175	NA	NA	500
West Excavation (2017 Release)									
BH-1	12	1/25/2018	0.023	<0.0050	0.013	0.092	7.6	260	267.6
BH-2	10	1/25/2018	0.029	<0.0050	0.0051	0.0072	1.1	<50	1.1
BH-3	12	2/22/2018	<0.0020	<0.0050	0.0050	0.02	1.6	150	151.6
BH-4	12	2/22/2018	<0.0020	<0.0050	0.0056	0.021	1.4	<50	1.4
SW-1	6	1/30/2018	<0.0020	<0.0050	<0.0050	<0.0050	<0.5	<50	<50
SW-2	6	1/30/2018	0.19	3.5	0.45	2.00	45	1900	1945
SW-3	10	1/30/2018	5.8	30	19	52	2900	7400	10300
SW-4	6	1/30/2018	<0.0020	<0.0050	<0.0050	<0.0050	<0.5	220	220
SW-5	6	1/30/2018	0.057	0.5	0.32	1.00	30	2000	2030
SW-6	5	1/30/2018	0.0044	0.016	0.014	11	1300	2600	3900
SW-7	6.5	1/30/2018	<0.0020	<0.0050	<0.0050	0.014	38	<50	88
SW-8	5	1/30/2018	<0.0020	<0.0050	<0.0050	<0.0050	9.9	830	839.9
SW-9	6	2/7/2018	0.026	0.056	0.26	9.8	3600	38000	41600
SW-10	6	2/7/2018	0.003	<0.0050	<0.0050	<0.0050	4.0	1100	1104
SW-11	6	2/7/2018	0.15	0.62	0.41	1.2	49	680	729
SW-12	6	2/7/2018	5.8	24	13	34	2500	3300	5800
SW-13	8	2/13/2018	0.11	<0.0050	0.013	0.1	370	7100	7470
SW-14	6	2/13/2018	0.11	0.044	0.063	35	3400	14000	17400
SW-15	6	2/13/2018	0.0099	0.021	0.0072	2.9	43	3900	3943
SW-16	6	2/13/2018	18	92	31	110	6000	30000	36000
SW-17	6	2/14/2018	<0.0020	<0.0050	<0.0050	<0.0050	<0.5	140	140
SW-18	6	2/15/2018	<0.0020	<0.0050	<0.0050	<0.0050	<0.50	<50	<50
SW-19	6	2/15/2018	0.6	0.4	4.7	12	330	4900	5230
SW-20	6	2/19/2018	<0.0020	<0.0050	<0.0050	<0.0050	<0.50	<50	<50
SW-21	6	2/19/2018	0.012	0.06	0.045	0.63	190	9700	9890
SW-22	6	2/19/2018	<0.0020	<0.0050	<0.0050	0.0091	20	2800	2820



**Table 1 - Soil Analytical Data  
2017 / 2019 / Co-Mingled Excavations  
Whiting Oil & Gas Corporation  
Razor 27I  
Weld County, Colorado**

Sample ID	Depth BGS in Feet	Date Sampled	Concentration (mg/kg)						
			Benzene	Toluene	Ethylbenzene	Xylenes (Total)	GRO	DRO	TPH
COGCC Table 910-1 Concentration Levels			0.17	85	100	175	NA	NA	500
SW-23	6	2/19/2018	0.02	0.15	0.13	0.41	48	2300	2348
SW-24	6	2/19/2018	<0.0020	<0.0050	<0.0050	<0.0050	<0.50	<50	<50
SW-25	6	2/22/2018	<0.0020	<0.0050	<0.0050	<0.0050	<0.50	<50	<50
SW-26	6	2/22/2018	<0.0020	<0.0050	<0.0050	<0.0050	<0.50	<50	<50
SW-27	6	2/22/2018	0.014	0.23	0.47	1.9	200	9600	9800
SW-28	6	2/22/2018	0.037	0.019	0.068	0.064	2.2	4400	4402.2
SW-29	6	2/22/2018	0.2	0.92	0.51	1.7	60	6300	6360
SW-30	6	2/22/2018	<0.0020	<0.0050	<0.0050	<0.0050	0.92	<50	0.92
SW-31	6	2/22/2018	<0.0020	<0.0050	<0.0050	<0.0050	<0.50	<50	<50
SW-32	6	2/26/2018	<0.0020	<0.0050	<0.0050	<0.0050	<0.50	<50	<50
SW-33	6	2/27/2018	<0.0020	<0.0050	<0.0050	<0.0050	<0.50	<50	<50
SW-34	6	2/28/2018	<0.0020	<0.0050	<0.0050	<0.0050	<0.50	<50	<50
SW-35	8	3/9/2018	0.0	0.2	0.018	1.20	47.0	3700	3747
SW-36	8	3/15/2018	0.0064	0.024	0.0098	0.23	24	270	294
North Excavation (2017 Release)									
SS-1	14	8/29/2018	9.7	20	25	93	2100	22000	24100
SS-2	14	8/29/2018	1.3	9.20	10.00	44.00	1100.0	19000	20100
SS-3	14	8/29/2018	0.4	3.70	3.00	23.00	910.0	13000	13910
SS-4	14	8/29/2018	9.5	21.00	19.00	96.00	2200.0	11000	13200
BH-1	15	8/29/2018	0.0	0.05	0.05	0.19	5.2	450	455
BH-2	15	8/29/2018	<0.0020	<0.0050	<0.0050	<0.010	<0.50	200	200
SS-5	14	8/29/2018	10.0	31.00	16.00	87.00	2300.0	25000	27300
SS-6	14	9/7/2018	0.0	0.02	<0.0050	0.20	14.0	16000	16014
SS-7	14	9/7/2018	0.1	5.50	11.00	52.00	2400.0	51000	53400
SS-8	14	9/7/2018	0.1	0.09	0.01	0.59	23.0	7500	7523
SS-9	14	9/7/2018	4.8	6.80	2.30	47.00	1800.0	19000	20800
SS-10	14	9/21/2018	0.4	1.30	2.30	9.30	140.0	5500	5640





**Table 1 - Soil Analytical Data  
2017 / 2019 / Co-Mingled Excavations  
Whiting Oil & Gas Corporation  
Razor 27I  
Weld County, Colorado**

Sample ID	Depth BGS in Feet	Date Sampled	Concentration (mg/kg)						
			Benzene	Toluene	Ethylbenzene	Xylenes (Total)	GRO	DRO	TPH
COGCC Table 910-1 Concentration Levels			0.17	85	100	175	NA	NA	500
SS-11	14	9/21/2018	0.2	0.29	0.07	3.40	84.0	6100	6184
SS-12	14	9/21/2018	0.3	0.75	0.78	2.30	36.0	1200	1236
SS-13	14	9/21/2018	0.4	0.27	0.16	3.40	95.0	7700	7795
SS-14	14	10/4/2018	0.0	0.04	0.01	0.24	5.2	1500	1505
SS-15	14	10/4/2018	0.1	0.21	0.06	0.90	12.0	4000	4012
SS-16	14	10/4/2018	0.0	0.13	0.08	0.24	2.8	740	743
SS-17	14	10/4/2018	<0.0020	<0.0050	<0.0050	0.06	2.5	390	393
SS-18	14	10/19/2018	0.0	0.14	0.13	0.40	6.2	840	846
SS-19	14	10/19/2018	<0.0020	<0.0050	0.03	0.09	2.2	1200	1202
SS-20	14	10/19/2018	<0.0020	0.01	0.01	0.05	1.9	1000	1002
SS-21	14	11/12/2018	<0.0020	0.02	0.04	0.15	12.0	2500	2512
SS-22	14	11/12/2018	<0.0020	<0.0050	0.03	1.00	100.0	22000	22100
SS-23	14	11/12/2018	<0.0020	<0.0050	0.02	0.07	4.1	17000	17004
SS-24	14	11/29/2018	<0.0020	<0.0020	<0.0050	0.02	0.6	<50	<50
SS-25	14	11/29/2018	<0.0050	<0.0050	<0.0050	0.03	3.0	<50	<50
SS-26	14	11/29/2018	<0.0050	<0.0050	<0.0050	0.02	2.7	<50	<50
SS-27	0	12/12/2018	<0.0020	<0.0050	<0.0050	<0.010	<0.50	<50	<50
SS-28	12	12/12/2018	<0.0020	<0.0050	<0.0050	<0.010	<0.50	<50	<50
SS-29	14	12/28/2018	<0.0020	0.03	<0.0050	0.30	17.0	3400	3417
SS-30	14	12/28/2018	<0.0020	<0.0050	0.02	0.06	8.1	650	658
SS-31	14	1/16/2019	<0.0020	<0.0050	<0.0050	<0.010	<0.50	<50	<50
SS-32	14	1/16/2019	<0.0020	<0.0050	<0.0050	<0.010	<0.50	<50	<50
SS-33	12	10/4/2019	0.1	0.01	0.03	0.09	9.7	5100	5110
SS-34	10	10/4/2019	0.0	<0.0050	<0.0050	0.07	11.0	2600	2611
SS-35	10	10/9/2019	<0.0020	<0.0050	<0.0050	<0.010	15.0	1100	1115
SS-36	10	10/9/2019	0.0	0.03	0.02	0.21	60.0	5600	5660
SS-37	12	10/9/2019	<0.0020	<0.0050	<0.0050	0.02	15.0	1500	1515



**Table 1 - Soil Analytical Data  
2017 / 2019 / Co-Mingled Excavations  
Whiting Oil & Gas Corporation  
Razor 27I  
Weld County, Colorado**

Sample ID	Depth BGS in Feet	Date Sampled	Concentration (mg/kg)						
			Benzene	Toluene	Ethylbenzene	Xylenes (Total)	GRO	DRO	TPH
COGCC Table 910-1 Concentration Levels			0.17	85	100	175	NA	NA	500
SS-38	12	10/14/2019	<0.0020	<0.0050	<0.0050	<0.010	<0.50	<50	<50
SS-39	12	10/14/2019	0.12	0.01	0.09	0.18	13.0	190	203
BH-1	15	8/29/2018	0.0	0.05	0.05	0.19	5.2	450	455
BH-2	15	8/29/2018	<0.0020	<0.0050	<0.0050	<0.010	<0.50	200	200
BH-3	14	10/31/2019	<0.0020	<0.0050	<0.0050	<0.010	<0.50	<50	<50
BH-4	14	10/31/2019	<0.0020	<0.0050	<0.0050	<0.010	<0.50	<50	<50
BH-5	14	10/31/2019	<0.0020	<0.0050	<0.0050	<0.010	<0.50	<50	<50
North Excavation (2017 Release) Second Phase									
E-1	14	8/22/2019	<0.0020	<0.0050	<0.0050	<0.010	1.7	1100	1102
E-2	18	9/6/2019	<0.0020	<0.0050	<0.0050	<0.010	1.2	5200	5201
E-3	18	9/13/2019	<0.0020	<0.0050	<0.0050	<0.010	0.5	1200	1201
BH-1	18	8/22/2019	<0.0020	<0.0050	<0.0050	<0.010	0.6	<50	1
W-1	14	8/22/2019	0.022	0.010	0.012	1.10	310.0	30000	30310
W-2	18	9/6/2019	<0.0020	<0.0050	<0.0050	0.03	6.8	5600	5607
W-3	18	9/13/2019	<0.0020	<0.0050	<0.0050	<0.010	<0.50	<50	<50
SW SE	10	9/19/2019	<0.0020	<0.0050	<0.0050	0.11	74.0	5400	5474
SW SE 2	10	9/24/2019	0.003	<0.0050	<0.0050	0.22	17.0	2900	2917
East Excavation (2019 Release)									
SS-1	3	4/29/2019	0.43	6.90	12.00	71.00	3900	8100	12000
SS-2	3	4/29/2019	0.40	3.20	3.90	14.00	840	790	1630
SS-3	3	4/29/2019	0.01	0.04	0.10	0.55	33	1100	1133
SS-4	0	4/29/2019	<0.0020	<0.0050	<0.0050	<0.010	<0.50	<50	<50
SS-5	0	4/29/2019	<0.0020	<0.0050	<0.0050	<0.010	<0.50	<50	<50
SS-6	0	4/29/2019	<0.0020	<0.0050	<0.0050	<0.010	<0.50	<50	<50
SS-7	2.5	4/30/2019	<0.0020	<0.0050	<0.0050	<0.010	1	210	211
	3	5/1/2019	<0.0020	<0.0050	<0.0050	<0.010	<0.50	<50	<50



**Table 1 - Soil Analytical Data  
2017 / 2019 / Co-Mingled Excavations  
Whiting Oil & Gas Corporation  
Razor 27I  
Weld County, Colorado**

Sample ID	Depth BGS in Feet	Date Sampled	Concentration (mg/kg)						
			Benzene	Toluene	Ethylbenzene	Xylenes (Total)	GRO	DRO	TPH
COGCC Table 910-1 Concentration Levels			0.17	85	100	175	NA	NA	500
SS-8	2.5	4/30/2019	0.00	0.05	0.04	0.16	8	540	548
	3	5/1/2019	0.01	0.08	0.09	0.34	16	130	146
SS-9	2.5	4/30/2019	<0.0020	<0.0050	<0.0050	<0.010	<0.50	260	260
	3	5/1/2019	<0.0020	0.02	0.01	0.02	1	<50	<50
SS-10	5	5/2/2019	0.00	0.02	0.02	69.00	2300	9400	11700
SS-11	3	5/2/2019	<0.0020	0.11	0.54	16.00	1100	8300	9400
SS-12	7	5/3/2019	0.06	6.90	10.00	38.00	3200	21000	24200
SS-13	10	5/10/2019	0.01	<0.0050	<0.0050	<0.010	<0.50	<50	<50
	8	5/10/2019	<0.0020	<0.0050	<0.0050	<0.010	<0.50	<50	<50
	6	5/10/2019	<0.0020	<0.0050	<0.0050	<0.010	<0.50	<50	<50
	4	5/10/2019	<0.0020	<0.0050	<0.0050	<0.010	<0.50	<50	<50
	2	5/10/2019	<0.0020	<0.0050	<0.0050	<0.010	<0.50	<50	<50
SS-14	5	5/9/2019	<0.0020	<0.0050	<0.0050	<0.010	<0.50	<50	<50
	10	5/9/2019	<0.0020	<0.0050	<0.0050	<0.010	<0.50	<50	<50
SS-15	3	5/9/2019	<0.0020	<0.0050	<0.0050	<0.010	<0.50	<50	<50
SS-16	2	5/13/2019	<0.0020	<0.0050	<0.0050	<0.010	<0.50	<50	<50
	4	5/13/2019	<0.0020	<0.0050	<0.0050	<0.010	<0.50	<50	<50
	6	5/13/2019	<0.0020	<0.0050	<0.0050	<0.010	<0.50	<50	<50
	8	5/13/2019	<0.0020	<0.0050	<0.0050	<0.010	<0.50	<50	<50
	10	5/10/2019	0.02	0.02	<0.0050	0.02	<0.50	<50	<50
SS-17	2	5/13/2019	<0.0020	<0.0050	<0.0050	<0.010	<0.50	<50	<50
	4	5/13/2019	<0.0020	<0.0050	<0.0050	<0.010	1	79	80
	6	5/13/2019	<0.0020	<0.0050	<0.0050	<0.010	1	79	80
	8	5/13/2019	<0.0020	<0.0050	<0.0050	<0.010	1	<50	<50
	10	5/10/2019	0.07	0.32	0.17	0.59	21	270	291
SS-18	10	5/23/2019	0.14	2.90	7.10	27.00	1900	6300	8200
SS-19	10	5/23/2019	0.79	10.00	17.00	65.00	3100	9400	12500



**Table 1 - Soil Analytical Data  
2017 / 2019 / Co-Mingled Excavations  
Whiting Oil & Gas Corporation  
Razor 27I  
Weld County, Colorado**

Sample ID	Depth BGS in Feet	Date Sampled	Concentration (mg/kg)						
			Benzene	Toluene	Ethylbenzene	Xylenes (Total)	GRO	DRO	TPH
COGCC Table 910-1 Concentration Levels			0.17	85	100	175	NA	NA	500
SS-20	12	5/23/2019	4.50	36.00	29.00	85.00	2600	7400	10000
SS-21	13	5/23/2019	3.40	31.00	23.00	83.00	2600	10000	12600
SS-22	13	5/23/2019	1.10	18.00	17.00	56.00	1800	3500	5300
SS-23	13	5/31/2019	2.60	17.00	12.00	35.00	1400	2300	3700
SS-24	13	5/31/2019	<0.0020	<0.0050	<0.0050	<0.010	7	<50	<50
SS-25	12	5/31/2019	0.20	0.13	0.52	6.00	260	1800	2060
SS-26	12	5/31/2019	0.03	0.02	0.06	1.30	180	690	870
SS-27	13	6/3/2019	0.14	0.84	0.50	17.00	850	1100	1950
SS-28	16.5	6/3/2019	0.60	0.22	4.50	11.00	440	2300	2740
SS-29	16.5	6/3/2019	0.10	0.28	0.50	1.30	55	320	375
SS-30	15	6/4/2019	0.59	2.70	3.90	11.00	610	1300	1910
SS-31	14	6/4/2019	2.80	36.00	39.00	120.00	4500	19000	23500
SS-32	16	6/4/2019	<0.0020	0.98	1.70	5.60	610	3100	3710
SS-33	16	6/13/2019	3.20	46.00	110.00	330.00	19000	32000	51000
SS-34	16	6/20/2019	<0.0020	<0.0050	<0.0050	<0.010	1	<50	<50
SS-35	16	6/20/2019	<0.0020	<0.0050	<0.0050	0.08	450	1100	1550
SS-36	16	6/20/2019	<0.0020	<0.0050	<0.0050	0.41	370	720	1090
SS-37	16	6/20/2019	<0.0020	<0.0050	<0.0050	<0.010	5	82	87
SS-40	14	7/1/2019	<0.0020	<0.0050	<0.0050	<0.010	<0.50	61	61
SS-41	16	7/3/2019	1.50	3.60	11.00	34.00	1300	3800	5100
SS-42	14	7/3/2019	0.06	0.08	0.13	0.38	8	160	168
SS-43	15	7/8/2019	<0.0020	<0.0050	<0.0050	0.02	28	650	678
SS-44	16	7/11/2019	<0.0020	0.08	0.14	1.30	97	2400	2497
SS-45	16	7/11/2019	0.15	0.10	0.29	0.75	29	530	559
SS-46	16	7/11/2019	0.03	0.01	0.03	0.09	6	950	956
SS-47	16	7/11/2019	<0.0020	<0.0050	<0.0050	<0.010	1	<50	<50
SS-48	16	7/11/2019	<0.0020	<0.0050	<0.0050	0.02	1	140	141
SS-49	16	7/11/2019	0.04	0.04	0.02	0.36	75	3000	3075





**Table 1 - Soil Analytical Data  
2017 / 2019 / Co-Mingled Excavations  
Whiting Oil & Gas Corporation  
Razor 27I  
Weld County, Colorado**

Sample ID	Depth BGS in Feet	Date Sampled	Concentration (mg/kg)						
			Benzene	Toluene	Ethylbenzene	Xylenes (Total)	GRO	DRO	TPH
COGCC Table 910-1 Concentration Levels			0.17	85	100	175	NA	NA	500
SS-50	16	7/11/2019	<0.0020	<0.0050	<0.0050	<0.010	1	<50	<50
SS-52	16	7/11/2019	<0.0020	<0.0050	<0.0050	<0.010	2	97	99
SS-53	16	7/15/2019	0.02	0.31	0.35	1.30	20	140	160
SS-54	16	7/17/2019	0.01	<0.0050	0.02	0.09	5	860	865
SS-55	16	7/17/2019	0.36	0.12	0.76	1.50	210	1000	1210
SS-56	18.5	7/17/2019	<0.0020	<0.0050	<0.0050	<0.010	<0.50	<50	<50
SS-57	16	7/19/2019	0.02	0.03	0.01	1.00	52	3500	3552
SS-58	16	7/19/2019	<0.0020	<0.0050	<0.0050	0.24	240	770	1010
SS-59	16	7/19/2019	<0.0020	<0.0050	<0.0050	<0.010	3	160	163
SS-60	16	7/23/2019	<0.0020	<0.0050	<0.0050	<0.010	<0.50	<50	<50
SS-61	16	7/23/2019	<0.0020	<0.0050	<0.0050	<0.010	<0.50	<50	<50
SS-62	16	7/24/2019	<0.0020	<0.0050	<0.0050	0.05	7	300	307
SS-63	19	7/30/2019	<0.0020	<0.0050	<0.0050	0.05	39	2100	2139
SS-64	19	7/30/2019	<0.0020	<0.0050	<0.0050	0.06	10	520	530
SS-65	19	7/30/2019	<0.0020	0.01	0.04	0.13	6	600	606
SS-66	19	7/30/2019	<0.0020	<0.0050	<0.0050	0.05	5	1500	1505
SS-67	20	8/7/2019	0.02	<0.0050	<0.0050	<0.010	1	320	321
SS-68	20	8/7/2019	0.00	0.01	0.01	0.03	2	100	102
SS-69	20	8/7/2019	0.01	<0.0050	<0.0050	<0.010	2	<50	<50
SS-70	20	8/7/2019	<0.0020	<0.0050	<0.0050	<0.010	1	<50	<50
SS-71	17	8/14/2019	<0.0020	<0.0050	<0.0050	<0.010	<0.50	<50	<50
SS-72	17	8/14/2019	<0.0020	<0.0050	<0.0050	<0.010	<0.50	<50	<50
BH-1	16	7/11/2019	24.00	<0.0050	61.00	230.00	9000	33000	42000
BH-2	16	7/11/2019	<0.0020	<0.0050	<0.0050	<0.010	5	3400	3405
BH-3	16	7/11/2019	<0.0020	<0.0050	0.01	0.86	30	8400	8430
BH-4	16	7/11/2019	<0.0020	<0.0050	<0.0050	<0.010	1	170	171
BH-5	16	7/11/2019	<0.0020	<0.0050	<0.0050	<0.010	<0.50	<50	<50
BH-6	16	7/11/2019	0.01	0.16	0.21	2.50	480	12000	12480
BH-7	16	7/11/2019	<0.0020	<0.0050	<0.0050	<0.010	1	110	111



**Table 1 - Soil Analytical Data  
2017 / 2019 / Co-Mingled Excavations  
Whiting Oil & Gas Corporation  
Razor 27I  
Weld County, Colorado**

Sample ID	Depth BGS in Feet	Date Sampled	Concentration (mg/kg)						
			Benzene	Toluene	Ethylbenzene	Xylenes (Total)	GRO	DRO	TPH
COGCC Table 910-1 Concentration Levels			0.17	85	100	175	NA	NA	500
BH-8	16	7/11/2019	2.30	5.20	4.80	12.00	640	1000	1640
BH-9	16	7/11/2019	0.01	0.04	0.04	0.13	18	59	77
BH-10	18.5	7/17/2019	0.03	<0.0050	0.03	0.09	4	160	164
BH-11	16	7/19/2019	0.14	0.06	0.09	21.00	1800	7500	9300
BH-12	18	8/14/2019	0.08	0.07	0.07	0.67	<0.50	<50	<50
BH-13	18	8/14/2019	<0.0020	<0.0050	<0.0050	<0.010	<0.50	<50	<50
BH-14	18	8/14/2019	0.71	4.60	5.50	19.00	1200	1900	3100
	18.5	8/19/2019	0.07	0.14	0.11	0.51	110	2200	2310
	19	8/20/2019	0.02	0.01	0.01	0.04	1	63	64
BH-15	16.5	8/14/2019	<0.0020	<0.0050	<0.0050	<0.010	1	120	121
BH-16	16.5	8/14/2019	<0.0020	<0.0050	<0.0050	<0.010	<0.50	<50	<50
BH-17	18	8/14/2019	<0.0020	<0.0050	<0.0050	<0.010	<0.50	<50	<50
SS-41	12	10/24/2019	0.0	<0.0050	0.03	0.20	26.0	440	466
SS-42	12	10/24/2019	0.1	0.02	0.16	0.40	14.0	430	444
BH-6	14	11/4/2019	<0.0020	<0.0050	<0.0050	<0.010	<0.50	69	69
BH-7	14	11/4/2019	<0.0020	<0.0050	<0.0050	<0.010	<0.50	63	63
BH-8	14	11/4/2019	<0.0020	<0.0050	<0.0050	<0.010	<0.50	<50	<50



**Table 1 - Soil Analytical Data  
2017 / 2019 / Co-Mingled Excavations  
Whiting Oil & Gas Corporation  
Razor 27I  
Weld County, Colorado**

Sample ID	Depth BGS in Feet	Date Sampled	Concentration (mg/kg)						
			Benzene	Toluene	Ethylbenzene	Xylenes (Total)	GRO	DRO	TPH
COGCC Table 910-1 Concentration Levels			0.17	85	100	175	NA	NA	500
Co-Mingled Soil (2017 & 2019 Releases)									
SS-38	16	7/1/2019	<0.0020	<0.0050	<0.0050	<0.010	<0.50	<50	<50
SS-39	14	7/1/2019	<0.0020	<0.0050	<0.0050	<0.010	<0.50	75	75
SS-51	16	7/11/2019	<0.0020	<0.0050	0.01	0.04	3	120	123
SS-73	10	8/14/2019	<0.0020	<0.0050	<0.0050	<0.010	<0.50	<50	<50
BWW	12	9/30/2019	<0.0020	<0.0050	0.03	0.38	62	1800	1862
BWE	10	9/30/2019	<0.0020	<0.0050	0.01	0.02	20	1100	1120
SS-40	10	10/15/2019	<0.0020	<0.0050	<0.0050	<0.010	17.0	1100	1117
BH-9	14	11/4/2019	<0.0020	<0.0050	<0.0050	<0.010	<0.50	<50	<50

mg/kg - milligrams per kilogram

mmhos/cm - millimhos per centimeter

< - Analytical result is less than the reporting limit

COGCC - Colorado Oil and Gas Conservation Commission

GRO - Gasoline Range Organics

DRO - Diesel Range Organics

TPH - Total Petroleum Hydrocarbons (Combined GRO/DRO)

BGS - Below Ground Surface



**Table 2 - Soil Analytical Data  
2017 / 2019 Crushed Rock / Overburden  
Whiting Oil & Gas Corporation  
Razor 27I  
Weld County, Colorado**

Sample ID	Date Sampled	Concentration (mg/kg)						
		Benzene	Toluene	Ethylbenzene	Xylenes (Total)	GRO	DRO	TPH
COGCC Table 910-1 Concentration Levels		0.17	85	100	175	NA	NA	500
2017 Release Crushed Rock								
CR-1A	3/29/2018	<0.0020	<0.0050	<0.0050	<0.0050	2.5	170	172.5
CR-2A	3/29/2018	<0.0020	<0.0050	<0.0050	<0.0050	1.8	72	73.8
CR-3A	3/29/2018	<0.0020	<0.0050	<0.0050	<0.0050	2.5	150	152.5
CR-4A	3/29/2018	<0.0020	<0.0050	<0.0050	<0.0050	1.7	59	60.7
CR-5A	3/29/2018	<0.0020	<0.0050	<0.0050	<0.0050	1.6	100	101.6
CR-6A	3/29/2018	<0.0020	<0.0050	<0.0050	<0.0050	1.6	92	93.6
CR-7A	3/29/2018	<0.0020	<0.0050	<0.0050	<0.0050	2.2	150	152.2
CR-8A	3/29/2018	<0.0020	<0.0050	<0.0050	<0.0050	1.5	190	191.5
CR-9A	3/29/2018	<0.0020	<0.0050	<0.0050	0.01	2.3	170	172.3
CR-10A	3/29/2018	<0.0020	<0.0050	<0.0050	<0.0050	1.8	170	171.8
CR-11A	3/29/2018	<0.0020	<0.0050	<0.0050	<0.0050	1.9	140	141.9
CR-12A	3/29/2018	<0.0020	<0.0050	<0.0050	<0.0050	1.7	86	87.7
CR-13A	3/29/2018	<0.0020	<0.0050	<0.0050	0.011	2.2	97	99.2
CR-14A	3/29/2018	<0.0020	<0.0050	<0.0050	<0.0050	1.9	120	121.9
CR-15A	3/29/2018	<0.0020	<0.0050	<0.0050	<0.0050	1.9	170	171.9
CR-16A	3/29/2018	<0.0020	<0.0050	<0.0050	<0.0050	1.4	120	121.4
CR-17A	3/29/2018	<0.0020	<0.0050	<0.0050	<0.0050	1.8	130	131.8
CR-18A	3/29/2018	<0.0020	<0.0050	<0.0050	<0.0050	1.8	230	231.8
CR-19A	4/6/2018	<0.0020	<0.0050	<0.0050	<0.0050	1.07	161	162.01
CR-20A	4/6/2018	<0.0020	<0.0050	<0.0050	<0.0050	0.72	107	107.72
CR-21A	4/6/2018	<0.0020	<0.0050	<0.0050	<0.0050	1.06	179	180.06
CR-22A	4/6/2018	<0.0020	<0.0050	<0.0050	<0.0050	0.86	142	142.86
CR-23A	4/6/2018	<0.0020	<0.0050	<0.0050	<0.0050	0.95	254	254.95



**Table 2 - Soil Analytical Data  
2017 / 2019 Crushed Rock / Overburden  
Whiting Oil & Gas Corporation  
Razor 27I  
Weld County, Colorado**

Sample ID	Date Sampled	Concentration (mg/kg)						
		Benzene	Toluene	Ethylbenzene	Xylenes (Total)	GRO	DRO	TPH
COGCC Table 910-1 Concentration Levels		0.17	85	100	175	NA	NA	500
CR-24A	4/6/2018	<0.0020	<0.0050	<0.0050	<0.0050	0.68	110	110.68
CR-25A	4/6/2018	<0.0020	<0.0050	0.003	0.02	2.49	261	263.49
CR-26A	4/6/2018	<0.0020	<0.0050	<0.0050	<0.0050	1.69	256	257.69
CR-27A	4/6/2018	<0.0020	<0.0050	<0.0050	<0.0050	2.54	393	395.54
CR-28A	4/6/2018	<0.0020	<0.0050	<0.0050	<0.0050	2.76	395	397.76
CR-29A	4/6/2018	<0.0020	<0.0050	<0.0050	<0.0050	2.26	366	368.26
CR-30A	4/6/2018	<0.0020	<0.0050	<0.0050	<0.0050	2.74	426	428.74
CR-31A	4/6/2018	<0.0020	<0.0050	<0.0050	<0.0050	0.92	129	129.92
CR-32A	4/6/2018	<0.0020	<0.0050	<0.0050	<0.0050	1.18	151	152.18
CR-33A	4/6/2018	<0.0020	<0.0050	<0.0050	<0.0050	0.88	117	117.88
CR-34A	4/6/2018	<0.0020	<0.0050	<0.0050	<0.0050	1.14	152	153.14
CR-35A	4/6/2018	<0.0020	<0.0050	<0.0050	<0.0050	0.85	61	61.85
CR-36A	4/6/2018	<0.0020	<0.0050	0.003	0.02	1.93	165	166.93
CR-1B	3/30/2018	<0.0020	<0.0050	<0.0050	<0.0050	<0.50	190	190
CR-2B	3/30/2018	<0.0020	<0.0050	<0.0050	<0.0050	<0.50	140	140
CR-3B	3/30/2018	<0.0020	<0.0050	<0.0050	<0.0050	<0.50	120	120
CR-4B	3/30/2018	<0.0020	<0.0050	<0.0050	<0.0050	<0.50	150	150
CR-5B	3/30/2018	<0.0020	<0.0050	<0.0050	<0.0050	<0.50	120	120
CR-6B	3/30/2018	<0.0020	<0.0050	<0.0050	<0.0050	<0.50	110	110
CR-7B	3/30/2018	<0.0020	<0.0050	<0.0050	<0.0050	<0.50	120	120
CR-8B	3/30/2018	<0.0020	<0.0050	<0.0050	<0.0050	0.66	280	280.66
CR-9B	3/30/2018	<0.0020	<0.0050	<0.0050	<0.0050	0.55	230	230.55
CR-10B	3/30/2018	<0.0020	<0.0050	<0.0050	<0.0050	<0.50	200	200
CR-11B	3/30/2018	<0.0020	<0.0050	<0.0050	<0.0050	<0.50	130	130



**Table 2 - Soil Analytical Data  
2017 / 2019 Crushed Rock / Overburden  
Whiting Oil & Gas Corporation  
Razor 27I  
Weld County, Colorado**

Sample ID	Date Sampled	Concentration (mg/kg)						
		Benzene	Toluene	Ethylbenzene	Xylenes (Total)	GRO	DRO	TPH
COGCC Table 910-1 Concentration Levels		0.17	85	100	175	NA	NA	500
CR-12B	3/30/2018	<0.0020	<0.0050	<0.0050	<0.0050	0.53	300	300.53
CR-13B	3/30/2018	<0.0020	<0.0050	<0.0050	<0.0050	0.54	190	190.54
CR-14B	3/30/2018	<0.0020	<0.0050	<0.0050	0.016	0.78	360	360.78
CR-15B	3/30/2018	<0.0020	<0.0050	<0.0050	<0.0050	<0.50	340	340
CR-16B	3/30/2018	<0.0020	<0.0050	<0.0050	<0.0050	0.6	190	190.6
CR-17B	3/30/2018	<0.0020	<0.0050	<0.0050	<0.0050	<0.50	240	240
CR-18B	3/30/2018	<0.0020	<0.0050	<0.0050	<0.0050	<0.50	260	260
CR-19B	3/30/2018	<0.0020	<0.0050	<0.0050	<0.0050	<0.50	210	210
CR-20B	3/30/2018	<0.0020	<0.0050	<0.0050	<0.0050	<0.50	190	190
CR-21B	3/30/2018	<0.0020	<0.0050	<0.0050	0.0058	0.7	350	350.7
CR-22B	3/30/2018	<0.0020	<0.0050	<0.0050	<0.0050	<0.50	240	240
CR-23B	3/30/2018	<0.0020	<0.0050	<0.0050	<0.0050	<0.50	190	190
CR-24B	3/30/2018	<0.0020	<0.0050	<0.0050	0.007	1.1	530	531.1
CR-24B-2	4/11/2018	<0.0020	<0.0050	<0.0050	0.0057	1.5	360	361.5
CR-25B	3/30/2018	<0.0020	<0.0050	<0.0050	<0.0050	0.57	250	250.57
CR-26B	3/30/2018	<0.0020	<0.0050	<0.0050	<0.0050	0.58	360	360.58
CR-27B	3/30/2018	<0.0020	<0.0050	<0.0050	<0.0050	0.82	390	390.82
CR-28B	3/30/2018	<0.0020	<0.0050	<0.0050	0.0071	0.8	290	290.8
CR-29B	4/16/2018	<0.0020	<0.0050	<0.0050	<0.0050	0.8	330	330.8
CR-30B	4/16/2018	<0.0020	<0.0050	<0.0050	<0.0050	0.86	160	160.86
CR-31B	4/16/2018	<0.0020	<0.0050	<0.0050	<0.0050	0.69	150	150.69
CR-32B	4/16/2018	<0.0020	<0.0050	<0.0050	<0.0050	0.54	140	140.54
CR-33B	4/16/2018	<0.0020	<0.0050	<0.0050	<0.0050	0.55	150	150.55
CR-34B	4/16/2018	<0.0020	<0.0050	<0.0050	<0.0050	1	180	181



**Table 2 - Soil Analytical Data  
2017 / 2019 Crushed Rock / Overburden  
Whiting Oil & Gas Corporation  
Razor 27I  
Weld County, Colorado**

Sample ID	Date Sampled	Concentration (mg/kg)						
		Benzene	Toluene	Ethylbenzene	Xylenes (Total)	GRO	DRO	TPH
COGCC Table 910-1 Concentration Levels		0.17	85	100	175	NA	NA	500
CR-35B	4/16/2018	<0.0020	<0.0050	<0.0050	0.006	1.4	380	381.4
CR-36B	4/16/2018	<0.0020	<0.0050	<0.0050	0.0058	1.2	200	201.2
CR-37B	4/16/2018	<0.0020	<0.0050	<0.0050	<0.0050	1.2	180	181.2
CR-38B	4/16/2018	<0.0020	<0.0050	<0.0050	<0.0050	0.67	200	200.67
CR-39B	4/16/2018	<0.0020	<0.0050	<0.0050	0.022	2.7	300	302.7
CR-40B	4/16/2018	<0.0020	<0.0050	<0.0050	<0.0050	1.2	200	201.2
CR-41B	4/16/2018	<0.0020	<0.0050	<0.0050	<0.0050	0.54	210	210.54
CR-42B	4/16/2018	<0.0020	<0.0050	<0.0050	0.0068	0.72	200	200.72
CR-43B	4/16/2018	<0.0020	<0.0050	<0.0050	<0.0050	<0.50	270	270
CR-44B	4/16/2018	<0.0020	<0.0050	<0.0050	<0.0050	0.64	210	210.64
CR-45B	4/16/2018	<0.0020	<0.0050	<0.0050	<0.0050	0.73	300	300.73
CR-46B	4/16/2018	<0.0020	<0.0050	<0.0050	<0.0050	0.75	290	290.75
CR-47B	4/16/2018	<0.0020	<0.0050	<0.0050	0.025	2.9	1400	1402.9
	5/31/2018	<0.0020	<0.0050	<0.0050	<0.0050	0.85	170	170.85
CR-48B	4/16/2018	<0.0020	<0.0050	<0.0050	<0.0050	1.2	300	301.2
CR-49B	4/16/2018	<0.0020	<0.0050	<0.0050	<0.0050	<0.50	170	170
CR-50B	4/16/2018	<0.0020	<0.0050	<0.0050	<0.0050	0.54	350	350.54
CR-51B	4/16/2018	<0.0020	<0.0050	<0.0050	<0.0050	0.79	350	350.79
CR-52B	4/16/2018	<0.0020	<0.0050	<0.0050	<0.0050	<0.50	430	430
CR-53B	4/16/2018	<0.0020	<0.0050	<0.0050	<0.0050	0.64	340	340.64
CR-54B	4/16/2018	<0.0020	<0.0050	<0.0050	<0.0050	<0.50	210	210
CR-55B	4/16/2018	<0.0020	<0.0050	<0.0050	<0.0050	<0.50	310	310
CR-56B	4/16/2018	<0.0020	<0.0050	<0.0050	<0.0050	<0.50	410	410
CR-1C	5/29/2018	<0.0020	<0.0050	<0.0050	<0.0050	<0.50	50	50



**Table 2 - Soil Analytical Data  
2017 / 2019 Crushed Rock / Overburden  
Whiting Oil & Gas Corporation  
Razor 27I  
Weld County, Colorado**

Sample ID	Date Sampled	Concentration (mg/kg)						
		Benzene	Toluene	Ethylbenzene	Xylenes (Total)	GRO	DRO	TPH
COGCC Table 910-1 Concentration Levels		0.17	85	100	175	NA	NA	500
CR-2C	5/29/2018	<0.0020	<0.0050	<0.0050	<0.0050	<0.50	62	62
CR-3C	5/29/2018	<0.0020	<0.0050	<0.0050	<0.0050	0.68	87	87.68
CR-4C	5/29/2018	<0.0020	<0.0050	<0.0050	<0.0050	<0.50	72	72
CR-5C	5/29/2018	<0.0020	<0.0050	<0.0050	<0.0050	0.88	77	77.88
CR-6C	5/29/2018	<0.0020	<0.0050	<0.0050	<0.0050	0.68	110	110.68
CR-7C	5/29/2018	<0.0020	<0.0050	<0.0050	<0.0050	0.62	72	72.62
CR-8C	5/29/2018	<0.0020	<0.0050	<0.0050	<0.0050	0.65	80	80.65
CR-9C	5/29/2018	<0.0020	<0.0050	<0.0050	<0.0050	<0.50	78	78
CR-10C	5/29/2018	<0.0020	<0.0050	<0.0050	<0.0050	0.8	91	91.8
CR-11C	5/29/2018	<0.0020	<0.0050	<0.0050	<0.0050	1	180	181
CR-12C	5/29/2018	<0.0020	<0.0050	<0.0050	<0.0050	0.87	85	85.87
CR-13C	5/29/2018	<0.0020	<0.0050	<0.0050	<0.0050	0.65	100	100.65
CR-14C	5/29/2018	<0.0020	<0.0050	<0.0050	<0.0050	1.4	95	96.4
CR-15C	5/29/2018	<0.0020	<0.0050	<0.0050	<0.0050	0.78	110	110.78
CR-16C	5/29/2018	<0.0020	<0.0050	<0.0050	<0.0050	0.81	84	84.81
CR-17C	5/29/2018	<0.0020	<0.0050	<0.0050	<0.0050	<0.50	<50	<50
CR-18C	5/29/2018	<0.0020	<0.0050	<0.0050	<0.0050	0.74	73	73.74
CR-19C	5/29/2018	<0.0020	<0.0050	<0.0050	<0.0050	6.7	110	116.7
CR-20C	5/29/2018	<0.0020	<0.0050	<0.0050	<0.0050	5.6	200	205.6
CR-21C	5/29/2018	<0.0020	<0.0050	<0.0050	<0.0050	0.96	80	80.96
CR-22C	5/29/2018	<0.0020	<0.0050	<0.0050	<0.0050	1.5	82	83.5
CR-23C	5/29/2018	<0.0020	<0.0050	<0.0050	<0.0050	1.4	86	87.4
CR-24C	5/29/2018	<0.0020	<0.0050	<0.0050	<0.0050	1.7	130	131.7
CR-25C	5/29/2018	<0.0020	<0.0050	<0.0050	<0.0050	1.2	90	91.2





**Table 2 - Soil Analytical Data  
2017 / 2019 Crushed Rock / Overburden  
Whiting Oil & Gas Corporation  
Razor 27I  
Weld County, Colorado**

Sample ID	Date Sampled	Concentration (mg/kg)						
		Benzene	Toluene	Ethylbenzene	Xylenes (Total)	GRO	DRO	TPH
COGCC Table 910-1 Concentration Levels		0.17	85	100	175	NA	NA	500
CR-26C	5/30/2018	<0.0020	<0.0050	<0.0050	<0.0050	2.6	<50	<50
CR-27C	5/30/2018	<0.0020	<0.0050	<0.0050	<0.0050	2.8	<50	<50
CR-28C	5/30/2018	<0.0020	<0.0050	<0.0050	<0.0050	4.8	53	57.8
CR-29C	5/30/2018	<0.0020	<0.0050	<0.0050	<0.0050	5.9	83	88.9
CR-30C	5/30/2018	<0.0020	<0.0050	<0.0050	<0.0050	4.3	110	114.3
CR-31C	5/30/2018	<0.0020	<0.0050	<0.0050	<0.0050	5.2	91	96.2
CR-32C	5/30/2018	<0.0020	<0.0050	<0.0050	<0.0050	4.5	89	93.5
CR-33C	5/30/2018	<0.0020	<0.0050	<0.0050	<0.0050	4.8	66	70.8
CR-34C	5/30/2018	<0.0020	<0.0050	<0.0050	<0.0050	5.6	<50	<50
CR-35C	5/30/2018	<0.0020	<0.0050	<0.0050	<0.0050	5.3	110	115.3
CR-36C	5/30/2018	<0.0020	<0.0050	<0.0050	<0.0050	4.8	85	89.8
CR-37C	5/30/2018	<0.0020	<0.0050	<0.0050	<0.0050	4.5	110	114.5
CR-38C	5/30/2018	<0.0020	<0.0050	<0.0050	<0.0050	4.5	92	96.5
CR-39C	5/30/2018	<0.0020	<0.0050	<0.0050	<0.0050	6.1	83	89.1
CR-40C	5/30/2018	<0.0020	<0.0050	<0.0050	<0.0050	6.5	97	103.5
CR-41C	5/30/2018	<0.0020	<0.0050	<0.0050	<0.0050	5.3	130	135.3
CR-42C	5/30/2018	<0.0020	<0.0050	<0.0050	<0.0050	6.7	110	116.7
CR-43C	5/30/2018	<0.0020	<0.0050	<0.0050	<0.0050	6.5	83	89.5
CR-44C	5/30/2018	<0.0020	<0.0050	<0.0050	<0.0050	6.3	130	136.3
CR-45C	5/30/2018	<0.0020	<0.0050	<0.0050	<0.0050	4.3	78	82.3
CR-46C	5/30/2018	<0.0020	<0.0050	<0.0050	<0.0050	5.3	97	102.3
CR-47C	5/30/2018	<0.0020	<0.0050	<0.0050	<0.0050	5.8	69	74.8
CR-48C	5/30/2018	<0.0020	<0.0050	<0.0050	<0.0050	5.2	78	83.2
CR-49C	5/30/2018	<0.0020	<0.0050	<0.0050	<0.0050	5.7	110	115.7



**Table 2 - Soil Analytical Data  
2017 / 2019 Crushed Rock / Overburden  
Whiting Oil & Gas Corporation  
Razor 27I  
Weld County, Colorado**

Sample ID	Date Sampled	Concentration (mg/kg)						
		Benzene	Toluene	Ethylbenzene	Xylenes (Total)	GRO	DRO	TPH
COGCC Table 910-1 Concentration Levels		0.17	85	100	175	NA	NA	500
CR-50C	5/30/2018	<0.0020	<0.0050	<0.0050	<0.0050	5.4	96	100.4
CR-51C	5/30/2018	<0.0020	<0.0050	<0.0050	<0.0050	4.7	91	95.7
CR-52C	5/30/2018	<0.0020	<0.0050	<0.0050	<0.0050	6	120	126
CR-53C	5/30/2018	<0.0020	<0.0050	<0.0050	<0.0050	5.2	100	105.2
CR-54C	5/30/2018	<0.0020	<0.0050	<0.0050	<0.0050	4	110	114
CR-55C	5/30/2018	<0.0020	<0.0050	<0.0050	<0.0050	3	80	83
CR-56C	5/31/2018	<0.0020	<0.0050	<0.0050	<0.0050	0.71	120	120.71
CR-57C	5/31/2018	<0.0020	<0.0050	<0.0050	<0.0050	0.99	140	140.99
CR-58C	5/31/2018	<0.0020	<0.0050	<0.0050	<0.0050	1.4	120	121.4
CR-59C	5/31/2018	<0.0020	<0.0050	<0.0050	<0.0050	1.6	140	141.6
CR-60C	5/31/2018	<0.0020	<0.0050	<0.0050	<0.0050	1.2	120	121.2
CR-61C	5/31/2018	<0.0020	<0.0050	<0.0050	<0.0050	1.1	110	111.1
CR-62C	5/31/2018	<0.0020	<0.0050	<0.0050	<0.0050	1.1	150	151.1
CR-63C	5/31/2018	<0.0020	<0.0050	<0.0050	<0.0050	1.2	180	181.2
CR-64C	5/31/2018	<0.0020	<0.0050	<0.0050	<0.0050	1.1	170	171.1
CR-65C	5/31/2018	<0.0020	<0.0050	<0.0050	<0.0050	1.4	170	171.4
CR-66C	5/31/2018	<0.0020	<0.0050	<0.0050	<0.0050	1.3	210	211.3
CR-67C	5/31/2018	<0.0020	<0.0050	<0.0050	<0.0050	1.4	170	171.4
CR-68C	5/31/2018	<0.0020	<0.0050	<0.0050	<0.0050	1.4	230	231.4
CR-69C	5/31/2018	<0.0020	<0.0050	<0.0050	<0.0050	1.3	130	131.3
CR-70C	5/31/2018	<0.0020	<0.0050	<0.0050	<0.0050	1.2	180	181.2
CR-71C	5/31/2018	<0.0020	<0.0050	<0.0050	<0.0050	1.2	200	201.2
CR-72C	5/31/2018	<0.0020	<0.0050	<0.0050	<0.0050	1.2	120	121.2
CR-73C	5/31/2018	<0.0020	<0.0050	<0.0050	<0.0050	1.4	150	151.4



**Table 2 - Soil Analytical Data  
2017 / 2019 Crushed Rock / Overburden  
Whiting Oil & Gas Corporation  
Razor 27I  
Weld County, Colorado**

Sample ID	Date Sampled	Concentration (mg/kg)						
		Benzene	Toluene	Ethylbenzene	Xylenes (Total)	GRO	DRO	TPH
COGCC Table 910-1 Concentration Levels		0.17	85	100	175	NA	NA	500
CR-74C	5/31/2018	<0.0020	<0.0050	<0.0050	<0.0050	1.4	130	131.4
CR-75C	5/31/2018	<0.0020	<0.0050	<0.0050	<0.0050	1.5	120	121.5
CR-76C	5/31/2018	<0.0020	<0.0050	<0.0050	<0.0050	0.89	110	110.89
CR-77C	5/31/2018	<0.0020	<0.0050	<0.0050	<0.0050	1.5	160	161.5
CR-78C	5/31/2018	<0.0020	<0.0050	<0.0050	<0.0050	1.4	110	111.4
CR-79C	5/31/2018	<0.0020	<0.0050	<0.0050	<0.0050	1.2	92	93.2
CR-80C	5/31/2018	<0.0020	<0.0050	<0.0050	<0.0050	1.2	120	121.2
CR-81C	5/31/2018	<0.0020	<0.0050	<0.0050	<0.0050	1.2	150	151.2
CR-82C	5/31/2018	<0.0020	<0.0050	<0.0050	<0.0050	1.3	130	131.3
CR-83C	5/31/2018	<0.0020	<0.0050	<0.0050	<0.0050	1.1	78	79.1
CR-84C	5/31/2018	<0.0020	<0.0050	<0.0050	<0.0050	0.99	110	110.99
CR-85C	5/31/2018	<0.0020	<0.0050	<0.0050	<0.0050	0.98	68	68.98
CR-86C	5/31/2018	<0.0020	<0.0050	<0.0050	<0.0050	1.2	170	171.2
CR-87C	5/31/2018	<0.0020	<0.0050	<0.0050	<0.0050	1.3	160	161.3
CR-88C	5/31/2018	<0.0020	<0.0050	<0.0050	<0.0050	1	140	141
2017 Release Overburden								
OB-1	2/21/2018	<0.0020	<0.0050	<0.0050	<0.0050	<0.5	<50	<50
OB-2	2/22/2018	<0.0020	<0.0050	<0.0050	<0.0050	<0.5	<50	<50
2019 Release Crushed Rock								
A1	8/21/2019	<0.0020	<0.0050	<0.0050	<0.010	<0.5	<50	<50
A2	8/21/2019	<0.0020	<0.0050	<0.0050	<0.010	<0.5	95	95
A3	8/21/2019	<0.0020	<0.0050	<0.0050	<0.010	<0.5	100	100
A4	8/21/2019	<0.0020	<0.0050	<0.0050	<0.010	<0.5	<50	<50
A5	8/21/2019	<0.0020	<0.0050	<0.0050	<0.010	<0.5	<50	<50



**Table 2 - Soil Analytical Data  
2017 / 2019 Crushed Rock / Overburden  
Whiting Oil & Gas Corporation  
Razor 27I  
Weld County, Colorado**

Sample ID	Date Sampled	Concentration (mg/kg)						
		Benzene	Toluene	Ethylbenzene	Xylenes (Total)	GRO	DRO	TPH
COGCC Table 910-1 Concentration Levels		0.17	85	100	175	NA	NA	500
A6	8/21/2019	<0.0020	<0.0050	<0.0050	<0.010	<0.5	<50	<50
A7	8/21/2019	<0.0020	<0.0050	<0.0050	<0.010	<0.5	94	94
A8	8/21/2019	<0.0020	<0.0050	<0.0050	<0.010	<0.5	<50	<50
A9	8/21/2019	<0.0020	<0.0050	<0.0050	<0.010	<0.5	<50	<50
A10	8/21/2019	<0.0020	<0.0050	<0.0050	<0.010	<0.5	<50	<50
A11	8/21/2019	<0.0020	<0.0050	<0.0050	<0.010	<0.5	<50	<50
A12	8/21/2019	<0.0020	<0.0050	<0.0050	<0.010	<0.5	<50	<50
A13	8/21/2019	<0.0020	<0.0050	<0.0050	<0.010	<0.5	120	120
A14	8/21/2019	<0.0020	<0.0050	<0.0050	<0.010	<0.5	130	120
A15	8/21/2019	<0.0020	<0.0050	<0.0050	<0.010	<0.5	<50	<50
A16	8/21/2019	<0.0020	<0.0050	<0.0050	<0.010	<0.5	<50	<50
A17	8/21/2019	<0.0020	<0.0050	<0.0050	<0.010	<0.5	120	120
A18	8/21/2019	<0.0020	<0.0050	<0.0050	<0.010	<0.5	<50	<50
A19	8/21/2019	<0.0020	<0.0050	<0.0050	<0.010	<0.5	140	140
A20	8/21/2019	<0.0020	<0.0050	<0.0050	<0.010	<0.5	<50	<50
A21	8/21/2019	<0.0020	<0.0050	<0.0050	<0.010	<0.5	<50	<50
A22	8/21/2019	<0.0020	<0.0050	<0.0050	<0.010	<0.5	<50	<50
A23	8/21/2019	<0.0020	<0.0050	<0.0050	<0.010	<0.5	<50	<50
A24	8/21/2019	<0.0020	<0.0050	<0.0050	<0.010	<0.5	<50	<50
A25	8/21/2019	<0.0020	<0.0050	<0.0050	<0.010	<0.5	71	71
A26	8/21/2019	<0.0020	<0.0050	<0.0050	<0.010	<0.5	<50	<50
A27	8/21/2019	<0.0020	<0.0050	<0.0050	<0.010	<0.5	58	58
A28	8/21/2019	<0.0020	<0.0050	<0.0050	<0.010	<0.5	<50	<50
A29	8/21/2019	<0.0020	<0.0050	<0.0050	<0.010	<0.5	<50	<50
A30	8/21/2019	<0.0020	<0.0050	<0.0050	<0.010	<0.5	<50	<50



**Table 2 - Soil Analytical Data  
2017 / 2019 Crushed Rock / Overburden  
Whiting Oil & Gas Corporation  
Razor 27I  
Weld County, Colorado**

Sample ID	Date Sampled	Concentration (mg/kg)						
		Benzene	Toluene	Ethylbenzene	Xylenes (Total)	GRO	DRO	TPH
COGCC Table 910-1 Concentration Levels		0.17	85	100	175	NA	NA	500
A31	8/22/2019	<0.0020	<0.0050	<0.0050	<0.010	<0.5	<50	<50
A32	8/22/2019	<0.0020	<0.0050	<0.0050	<0.010	<0.5	<50	<50
A33	8/22/2019	<0.0020	<0.0050	<0.0050	<0.010	<0.5	<50	<50
A34	8/22/2019	<0.0020	<0.0050	<0.0050	<0.010	<0.5	<50	<50
A35	8/22/2019	<0.0020	<0.0050	<0.0050	<0.010	<0.5	<50	<50
A36	8/22/2019	<0.0020	<0.0050	<0.0050	<0.010	<0.5	<50	<50
A37	8/22/2019	<0.0020	<0.0050	<0.0050	<0.010	<0.5	<50	<50
A38	8/22/2019	<0.0020	<0.0050	<0.0050	<0.010	<0.5	<50	<50
A39	9/4/2019	<0.0020	<0.0050	<0.0050	<0.010	<0.5	<50	<50
A40	9/4/2019	<0.0020	<0.0050	<0.0050	<0.010	<0.5	<50	<50
A41	9/4/2019	<0.0020	<0.0050	<0.0050	<0.010	<0.5	<50	<50
A42	9/4/2019	<0.0020	<0.0050	<0.0050	<0.010	<0.5	<50	<50
A43	9/4/2019	<0.0020	<0.0050	<0.0050	<0.010	<0.5	<50	<50
A44	9/4/2019	<0.0020	<0.0050	<0.0050	<0.010	<0.5	<50	<50
A45	9/4/2019	<0.0020	<0.0050	<0.0050	<0.010	<0.5	<50	<50
A46	9/4/2019	<0.0020	<0.0050	<0.0050	<0.010	<0.5	55	55
A47	9/4/2019	<0.0020	<0.0050	<0.0050	<0.010	<0.5	57	57
A48	9/4/2019	<0.0020	<0.0050	<0.0050	<0.010	<0.5	61	61
A49	9/4/2019	<0.0020	<0.0050	<0.0050	<0.010	<0.5	<50	<50
A50	9/4/2019	<0.0020	<0.0050	<0.0050	<0.010	<0.5	68	68
A51	9/4/2019	<0.0020	<0.0050	<0.0050	<0.010	<0.5	52	52
A52	9/4/2019	<0.0020	<0.0050	<0.0050	<0.010	<0.5	<50	<50
A53	9/4/2019	<0.0020	<0.0050	<0.0050	<0.010	<0.5	58	58
A54	9/4/2019	<0.0020	<0.0050	<0.0050	<0.010	<0.5	66	66



**Table 2 - Soil Analytical Data  
2017 / 2019 Crushed Rock / Overburden  
Whiting Oil & Gas Corporation  
Razor 27I  
Weld County, Colorado**

Sample ID	Date Sampled	Concentration (mg/kg)						
		Benzene	Toluene	Ethylbenzene	Xylenes (Total)	GRO	DRO	TPH
COGCC Table 910-1 Concentration Levels		0.17	85	100	175	NA	NA	500
A55	9/4/2019	<0.0020	<0.0050	<0.0050	<0.010	<0.5	56	56
A56	9/4/2019	<0.0020	<0.0050	<0.0050	<0.010	<0.5	<50	<50
A57	9/4/2019	<0.0020	<0.0050	<0.0050	<0.010	<0.5	<50	<50
A58	9/4/2019	<0.0020	<0.0050	<0.0050	<0.010	<0.5	<50	<50
A59	9/4/2019	<0.0020	<0.0050	<0.0050	<0.010	<0.5	54	54
A60	9/4/2019	<0.0020	<0.0050	<0.0050	<0.010	<0.5	52	52
A61	9/4/2019	<0.0020	<0.0050	<0.0050	<0.010	<0.5	<50	<50
A62	9/4/2019	<0.0020	<0.0050	<0.0050	<0.010	<0.5	<50	<50
A63	9/4/2019	<0.0020	<0.0050	<0.0050	<0.010	<0.5	<50	<50
A64	9/4/2019	<0.0020	<0.0050	<0.0050	<0.010	<0.5	<50	<50
A65	9/4/2019	<0.0020	<0.0050	<0.0050	<0.010	<0.5	<50	<50
A66	9/4/2019	<0.0020	<0.0050	<0.0050	<0.010	<0.5	61	61
A67	9/4/2019	<0.0020	<0.0050	<0.0050	<0.010	<0.5	60	60
A68	9/4/2019	<0.0020	<0.0050	<0.0050	<0.010	<0.5	<50	<50
A69	9/4/2019	<0.0020	<0.0050	<0.0050	<0.010	<0.5	<50	<50
A70	9/4/2019	<0.0020	<0.0050	<0.0050	<0.010	<0.5	<50	<50
A71	9/4/2019	<0.0020	<0.0050	<0.0050	<0.010	<0.5	52	52
A72	9/4/2019	<0.0020	<0.0050	<0.0050	<0.010	<0.5	<50	<50
A73	9/4/2019	<0.0020	<0.0050	<0.0050	<0.010	<0.5	<50	<50
A74	9/4/2019	<0.0020	<0.0050	<0.0050	<0.010	<0.5	<50	<50
A75	9/4/2019	<0.0020	<0.0050	<0.0050	<0.010	<0.5	57	57
A76	9/4/2019	<0.0020	<0.0050	<0.0050	<0.010	<0.5	<50	<50
A77	9/4/2019	<0.0020	<0.0050	<0.0050	<0.010	<0.5	50	50
A78	9/4/2019	<0.0020	<0.0050	<0.0050	<0.010	<0.5	57	57
A79	9/4/2019	<0.0020	<0.0050	<0.0050	<0.010	<0.5	<50	<50
A80	9/4/2019	<0.0020	<0.0050	<0.0050	<0.010	<0.5	56	56



**Table 2 - Soil Analytical Data  
2017 / 2019 Crushed Rock / Overburden  
Whiting Oil & Gas Corporation  
Razor 27I  
Weld County, Colorado**

Sample ID	Date Sampled	Concentration (mg/kg)						
		Benzene	Toluene	Ethylbenzene	Xylenes (Total)	GRO	DRO	TPH
COGCC Table 910-1 Concentration Levels		0.17	85	100	175	NA	NA	500
A81	9/4/2019	<0.0020	<0.0050	<0.0050	<0.010	<0.5	<50	<50
A82	9/4/2019	<0.0020	<0.0050	<0.0050	<0.010	<0.5	<50	<50
A83	9/4/2019	<0.0020	<0.0050	<0.0050	<0.010	<0.5	<50	<50
A84	9/4/2019	<0.0020	<0.0050	<0.0050	<0.010	<0.5	<50	<50
A85	9/4/2019	<0.0020	<0.0050	<0.0050	<0.010	<0.5	<50	<50
A86	9/4/2019	<0.0020	<0.0050	<0.0050	<0.010	<0.5	<50	<50
A87	9/4/2019	<0.0020	<0.0050	<0.0050	<0.010	<0.5	<50	<50
A88	9/4/2019	<0.0020	<0.0050	<0.0050	<0.010	<0.5	<50	<50
A89	9/4/2019	<0.0020	<0.0050	<0.0050	<0.010	<0.5	<50	<50
A90	9/4/2019	<0.0020	<0.0050	<0.0050	<0.010	<0.5	79	79
A91	9/4/2019	<0.0020	<0.0050	<0.0050	<0.010	<0.5	110	110
A92	9/4/2019	<0.0020	<0.0050	<0.0050	<0.010	<0.5	60	60
A93	9/4/2019	<0.0020	<0.0050	<0.0050	<0.010	<0.5	<50	<50
A94	9/4/2019	<0.0020	<0.0050	<0.0050	<0.010	<0.5	<50	<50
A95	9/4/2019	<0.0020	<0.0050	<0.0050	<0.010	<0.5	<50	<50
A96	9/4/2019	<0.0020	<0.0050	<0.0050	<0.010	<0.5	58	58
A97	9/4/2019	<0.0020	<0.0050	<0.0050	<0.010	<0.5	<50	<50
A98	9/4/2019	<0.0020	<0.0050	<0.0050	<0.010	<0.5	76	76
A-IME	9/11/2019	<0.0020	<0.0050	<0.0050	<0.010	<0.5	176	176
A-IMW	9/11/2019	<0.0020	<0.0050	<0.0050	<0.010	<0.5	320	320
B1	8/23/2019	<0.0020	<0.0050	<0.0050	<0.010	<0.5	<50	<50
B2	8/23/2019	<0.0020	<0.0050	<0.0050	<0.010	<0.5	<50	<50
B3	8/23/2019	<0.0020	<0.0050	<0.0050	<0.010	<0.5	<50	<50
B4	8/23/2019	<0.0020	<0.0050	<0.0050	<0.010	<0.5	<50	<50



**Table 2 - Soil Analytical Data  
2017 / 2019 Crushed Rock / Overburden  
Whiting Oil & Gas Corporation  
Razor 27I  
Weld County, Colorado**

Sample ID	Date Sampled	Concentration (mg/kg)						
		Benzene	Toluene	Ethylbenzene	Xylenes (Total)	GRO	DRO	TPH
COGCC Table 910-1 Concentration Levels		0.17	85	100	175	NA	NA	500
B5	8/23/2019	<0.0020	<0.0050	<0.0050	<0.010	<0.5	<50	<50
B6	8/23/2019	<0.0020	<0.0050	<0.0050	<0.010	<0.5	<50	<50
B7	8/23/2019	<0.0020	<0.0050	<0.0050	<0.010	<0.5	<50	<50
B8	8/23/2019	<0.0020	<0.0050	<0.0050	<0.010	<0.5	<50	<50
B9	8/23/2019	<0.0020	<0.0050	<0.0050	<0.010	<0.5	<50	<50
B10	8/23/2019	<0.0020	<0.0050	<0.0050	<0.010	<0.5	<50	<50
B11	8/23/2019	<0.0020	<0.0050	<0.0050	<0.010	<0.5	<50	<50
B12	8/23/2019	<0.0020	<0.0050	<0.0050	<0.010	<0.5	<50	<50
B13	8/23/2019	<0.0020	<0.0050	<0.0050	<0.010	<0.5	<50	<50
B14	8/23/2019	<0.0020	<0.0050	<0.0050	<0.010	<0.5	<50	<50
B15	8/23/2019	<0.0020	<0.0050	<0.0050	<0.010	<0.5	<50	<50
B16	8/23/2019	<0.0020	<0.0050	<0.0050	<0.010	<0.5	<50	<50
B17	8/23/2019	<0.0020	<0.0050	<0.0050	<0.010	<0.5	<50	<50
B18	8/23/2019	<0.0020	<0.0050	<0.0050	<0.010	<0.5	<50	<50
B19	8/23/2019	<0.0020	<0.0050	<0.0050	<0.010	<0.5	<50	<50
B20	8/23/2019	<0.0020	<0.0050	<0.0050	<0.010	<0.5	<50	<50
B21	8/23/2019	<0.0020	<0.0050	<0.0050	<0.010	<0.5	<50	<50
B22	8/23/2019	<0.0020	<0.0050	<0.0050	<0.010	<0.5	<50	<50
B23	8/26/2019	<0.0020	<0.0050	<0.0050	<0.010	<0.5	<50	<50
B24	8/26/2019	<0.0020	<0.0050	<0.0050	<0.010	<0.5	<50	<50
B25	8/26/2019	<0.0020	<0.0050	<0.0050	<0.010	<0.5	<50	<50
B26	8/26/2019	<0.0020	<0.0050	<0.0050	<0.010	<0.5	<50	<50
B27	8/26/2019	<0.0020	<0.0050	<0.0050	<0.010	<0.5	<50	<50
B28	8/26/2019	<0.0020	<0.0050	<0.0050	<0.010	<0.5	<50	<50





**Table 2 - Soil Analytical Data  
2017 / 2019 Crushed Rock / Overburden  
Whiting Oil & Gas Corporation  
Razor 27I  
Weld County, Colorado**

Sample ID	Date Sampled	Concentration (mg/kg)						
		Benzene	Toluene	Ethylbenzene	Xylenes (Total)	GRO	DRO	TPH
COGCC Table 910-1 Concentration Levels		0.17	85	100	175	NA	NA	500
B29	8/26/2019	<0.0020	<0.0050	<0.0050	<0.010	<0.5	<50	<50
B30	8/26/2019	<0.0020	<0.0050	<0.0050	<0.010	<0.5	<50	<50
B31	8/26/2019	<0.0020	<0.0050	<0.0050	<0.010	<0.5	<50	<50
B32	8/26/2019	<0.0020	<0.0050	<0.0050	<0.010	<0.5	<50	<50
B33	8/26/2019	<0.0020	<0.0050	<0.0050	<0.010	<0.5	<50	<50
B34	8/26/2019	<0.0020	<0.0050	<0.0050	<0.010	<0.5	<50	<50
B35	8/26/2019	<0.0020	<0.0050	<0.0050	<0.010	<0.5	<50	<50
B36	8/26/2019	<0.0020	<0.0050	<0.0050	<0.010	<0.5	<50	<50
B37	8/26/2019	<0.0020	<0.0050	<0.0050	<0.010	<0.5	<50	<50
B38	8/26/2019	<0.0020	<0.0050	<0.0050	<0.010	<0.5	<50	<50
B39	8/26/2019	<0.0020	<0.0050	<0.0050	<0.010	<0.5	<50	<50
B40	8/26/2019	<0.0020	<0.0050	<0.0050	<0.010	<0.5	<50	<50
B41	8/26/2019	<0.0020	<0.0050	<0.0050	<0.010	<0.5	<50	<50
B42	8/26/2019	<0.0020	<0.0050	<0.0050	<0.010	<0.5	<50	<50
B43	8/26/2019	<0.0020	<0.0050	<0.0050	<0.010	<0.5	<50	<50
B44	8/26/2019	<0.0020	<0.0050	<0.0050	<0.010	<0.5	<50	<50
B45	8/28/2019	<0.0020	<0.0050	<0.0050	<0.010	<0.5	160	160
B46	8/28/2019	<0.0020	<0.0050	<0.0050	<0.010	<0.5	140	140
B47	8/28/2019	<0.0020	<0.0050	<0.0050	<0.010	<0.5	73	73
B48	8/28/2019	<0.0020	<0.0050	<0.0050	<0.010	<0.5	110	110
B49	8/28/2019	<0.0020	<0.0050	<0.0050	<0.010	<0.5	61	61
B50	8/28/2019	<0.0020	<0.0050	<0.0050	<0.010	<0.5	100	100
B51	8/28/2019	<0.0020	<0.0050	<0.0050	<0.010	<0.5	80	80
B52	8/28/2019	<0.0020	<0.0050	<0.0050	<0.010	<0.5	59	59



**Table 2 - Soil Analytical Data  
2017 / 2019 Crushed Rock / Overburden  
Whiting Oil & Gas Corporation  
Razor 27I  
Weld County, Colorado**

Sample ID	Date Sampled	Concentration (mg/kg)						
		Benzene	Toluene	Ethylbenzene	Xylenes (Total)	GRO	DRO	TPH
COGCC Table 910-1 Concentration Levels		0.17	85	100	175	NA	NA	500
B53	8/28/2019	<0.0020	<0.0050	<0.0050	<0.010	<0.5	57	57
B54	8/28/2019	<0.0020	<0.0050	<0.0050	<0.010	<0.5	67	67
B55	8/28/2019	<0.0020	<0.0050	<0.0050	<0.010	<0.5	58	58
B56	8/28/2019	<0.0020	<0.0050	<0.0050	<0.010	<0.5	65	65
B57	8/28/2019	<0.0020	<0.0050	<0.0050	<0.010	<0.5	80	80
B58	8/28/2019	<0.0020	<0.0050	<0.0050	<0.010	<0.5	60	60
B59	8/28/2019	<0.0020	<0.0050	<0.0050	<0.010	<0.5	72	72
B60	8/28/2019	<0.0020	<0.0050	<0.0050	<0.010	<0.5	73	73
B61	8/28/2019	<0.0020	<0.0050	<0.0050	<0.010	<0.5	60	60
B62	8/28/2019	<0.0020	<0.0050	<0.0050	<0.010	<0.5	99	99
B63	8/28/2019	<0.0020	<0.0050	<0.0050	<0.010	<0.5	96	96
B64	8/28/2019	<0.0020	<0.0050	<0.0050	<0.010	<0.5	<50	<50
B65	8/28/2019	<0.0020	<0.0050	<0.0050	<0.010	<0.5	<50	<50
B66	8/28/2019	<0.0020	<0.0050	<0.0050	<0.010	<0.5	71	71
B67	8/28/2019	<0.0020	<0.0050	<0.0050	<0.010	<0.5	55	55
B68	8/28/2019	<0.0020	<0.0050	<0.0050	<0.010	<0.5	<50	<50
B69	8/28/2019	<0.0020	<0.0050	<0.0050	<0.010	<0.5	<50	<50
B70	8/28/2019	<0.0020	<0.0050	<0.0050	<0.010	<0.5	<50	<50
B71	8/28/2019	<0.0020	<0.0050	<0.0050	<0.010	<0.5	<50	<50
B72	8/28/2019	<0.0020	<0.0050	<0.0050	<0.010	<0.5	<50	<50
B73	8/28/2019	<0.0020	<0.0050	<0.0050	<0.010	<0.5	65	65
B74	8/28/2019	<0.0020	<0.0050	<0.0050	<0.010	<0.5	77	77
B75	8/28/2019	<0.0020	<0.0050	<0.0050	<0.010	<0.5	58	58
B76	8/28/2019	<0.0020	<0.0050	<0.0050	<0.010	<0.5	50	50



**Table 2 - Soil Analytical Data  
2017 / 2019 Crushed Rock / Overburden  
Whiting Oil & Gas Corporation  
Razor 27I  
Weld County, Colorado**

Sample ID	Date Sampled	Concentration (mg/kg)						
		Benzene	Toluene	Ethylbenzene	Xylenes (Total)	GRO	DRO	TPH
COGCC Table 910-1 Concentration Levels		0.17	85	100	175	NA	NA	500
B77	8/28/2019	<0.0020	<0.0050	<0.0050	<0.010	<0.5	50	50
B78	8/28/2019	<0.0020	<0.0050	<0.0050	<0.010	<0.5	52	52
B79	8/28/2019	<0.0020	<0.0050	<0.0050	<0.010	<0.5	61	61
B80	8/28/2019	<0.0020	<0.0050	<0.0050	<0.010	<0.5	58	58
B81	8/28/2019	<0.0020	<0.0050	<0.0050	<0.010	<0.5	66	66
B82	8/28/2019	<0.0020	<0.0050	<0.0050	<0.010	<0.5	63	63
B83	8/28/2019	<0.0020	<0.0050	<0.0050	<0.010	<0.5	87	87
B84	8/28/2019	<0.0020	<0.0050	<0.0050	<0.010	<0.5	54	54
B85	8/28/2019	<0.0020	<0.0050	<0.0050	<0.010	1.9	65	66.9
B86	8/28/2019	<0.0020	<0.0050	<0.0050	<0.010	<0.5	62	62
B87	8/28/2019	<0.0020	<0.0050	<0.0050	<0.010	<0.5	59	59
B88	8/28/2019	<0.0020	<0.0050	<0.0050	<0.010	<0.5	60	60
B89	8/28/2019	<0.0020	<0.0050	<0.0050	<0.010	<0.5	65	65
B90	8/28/2019	<0.0020	<0.0050	<0.0050	<0.010	<0.5	62	62
B91	8/28/2019	<0.0020	<0.0050	<0.0050	<0.010	<0.5	79	79
B92	8/28/2019	<0.0020	<0.0050	<0.0050	<0.010	<0.5	82	82
B93	8/28/2019	<0.0020	<0.0050	<0.0050	<0.010	<0.5	88	88
B94	8/28/2019	<0.0020	<0.0050	<0.0050	<0.010	<0.5	55	55
B95	8/28/2019	<0.0020	<0.0050	<0.0050	<0.010	<0.5	120	120
B96	8/28/2019	<0.0020	<0.0050	<0.0050	<0.010	<0.5	120	120
B97	8/28/2019	<0.0020	<0.0050	<0.0050	<0.010	<0.5	110	110
B98	8/28/2019	<0.0020	<0.0050	<0.0050	<0.010	<0.5	83	83
C1	8/28/2019	<0.0020	<0.0050	<0.0050	<0.010	<0.5	72	72
C2	8/28/2019	<0.0020	<0.0050	<0.0050	<0.010	<0.5	94	94



**Table 2 - Soil Analytical Data  
2017 / 2019 Crushed Rock / Overburden  
Whiting Oil & Gas Corporation  
Razor 27I  
Weld County, Colorado**

Sample ID	Date Sampled	Concentration (mg/kg)						
		Benzene	Toluene	Ethylbenzene	Xylenes (Total)	GRO	DRO	TPH
COGCC Table 910-1 Concentration Levels		0.17	85	100	175	NA	NA	500
C3	8/28/2019	<0.0020	<0.0050	<0.0050	<0.010	<0.5	53	53
C4	8/28/2019	<0.0020	<0.0050	<0.0050	<0.010	<0.5	70	70
C5	8/28/2019	<0.0020	<0.0050	<0.0050	<0.010	<0.5	90	90
C6	8/28/2019	<0.0020	<0.0050	<0.0050	<0.010	<0.5	<50	<50
C7	8/28/2019	<0.0020	<0.0050	<0.0050	<0.010	<0.5	83	83
C8	8/28/2019	<0.0020	<0.0050	<0.0050	<0.010	<0.5	<50	54
C9	8/28/2019	<0.0020	<0.0050	<0.0050	<0.010	<0.5	110	110
C10	8/28/2019	<0.0020	<0.0050	<0.0050	<0.010	<0.5	77	77
C11	8/28/2019	<0.0020	<0.0050	<0.0050	<0.010	<0.5	110	110
C12	8/28/2019	<0.0020	<0.0050	<0.0050	<0.010	<0.5	<50	<50
C13	8/28/2019	<0.0020	<0.0050	<0.0050	<0.010	<0.5	<50	<50
C14	8/28/2019	<0.0020	<0.0050	<0.0050	<0.010	<0.5	110	110
C15	8/28/2019	<0.0020	<0.0050	<0.0050	<0.010	<0.5	<50	<50
C16	8/28/2019	<0.0020	<0.0050	<0.0050	<0.010	<0.5	<50	<50
C17	8/28/2019	<0.0020	<0.0050	<0.0050	<0.010	<0.5	<50	<50
C18	8/28/2019	<0.0020	<0.0050	<0.0050	<0.010	<0.5	110	110
C19	8/28/2019	<0.0020	<0.0050	<0.0050	<0.010	<0.5	91	91
C20	8/28/2019	<0.0020	<0.0050	<0.0050	<0.010	<0.5	79	79
C21	8/28/2019	<0.0020	<0.0050	<0.0050	<0.010	<0.5	77	77
C22	8/28/2019	<0.0020	<0.0050	<0.0050	<0.010	<0.5	71	71
C23	8/28/2019	<0.0020	<0.0050	<0.0050	<0.010	<0.5	82	82
D1	8/29/2019	<0.0020	<0.0050	<0.0050	<0.010	<0.5	<50	<50
D2	8/29/2019	<0.0020	<0.0050	<0.0050	<0.010	<0.5	<50	<50
D3	8/29/2019	<0.0020	<0.0050	<0.0050	<0.010	<0.5	55	55



**Table 2 - Soil Analytical Data  
2017 / 2019 Crushed Rock / Overburden  
Whiting Oil & Gas Corporation  
Razor 27I  
Weld County, Colorado**

Sample ID	Date Sampled	Concentration (mg/kg)						
		Benzene	Toluene	Ethylbenzene	Xylenes (Total)	GRO	DRO	TPH
COGCC Table 910-1 Concentration Levels		0.17	85	100	175	NA	NA	500
D4	8/29/2019	<0.0020	<0.0050	<0.0050	<0.010	<0.5	<50	<50
D5	8/29/2019	<0.0020	<0.0050	<0.0050	<0.010	<0.5	60	60
D6	8/29/2019	<0.0020	<0.0050	<0.0050	<0.010	<0.5	76	76
D7	8/29/2019	<0.0020	<0.0050	<0.0050	<0.010	<0.5	77	77
D8	8/29/2019	<0.0020	<0.0050	<0.0050	<0.010	<0.5	50	50
D9	8/29/2019	<0.0020	<0.0050	<0.0050	<0.010	<0.5	51	51
D10	8/29/2019	<0.0020	<0.0050	<0.0050	<0.010	<0.5	<50	<50
D11	8/29/2019	<0.0020	<0.0050	<0.0050	<0.010	<0.5	<50	<50
D12	8/29/2019	<0.0020	<0.0050	<0.0050	<0.010	<0.5	73	73
D13	8/29/2019	<0.0020	<0.0050	<0.0050	<0.010	<0.5	<50	<50
D14	8/29/2019	<0.0020	<0.0050	<0.0050	<0.010	<0.5	<50	<50
D15	8/29/2019	<0.0020	<0.0050	<0.0050	<0.010	<0.5	<50	<50
D16	8/29/2019	<0.0020	<0.0050	<0.0050	<0.010	<0.5	<50	<50
D17	8/29/2019	<0.0020	<0.0050	<0.0050	<0.010	<0.5	<50	<50
D18	8/29/2019	<0.0020	<0.0050	<0.0050	<0.010	<0.5	<50	<50
D19	8/29/2019	<0.0020	<0.0050	<0.0050	<0.010	<0.5	<50	<50
D20	8/29/2019	<0.0020	<0.0050	<0.0050	<0.010	<0.5	<50	<50
D21	8/29/2019	<0.0020	<0.0050	<0.0050	<0.010	<0.5	60	60
D22	8/29/2019	<0.0020	<0.0050	<0.0050	<0.010	<0.5	69	69
D23	8/29/2019	<0.0020	<0.0050	<0.0050	<0.010	<0.5	63	63
D24	8/29/2019	<0.0020	<0.0050	<0.0050	<0.010	<0.5	170	170
D25	8/29/2019	<0.0020	<0.0050	<0.0050	<0.010	<0.5	150	150
D26	8/29/2019	<0.0020	<0.0050	<0.0050	<0.010	<0.5	51	51
D27	8/29/2019	<0.0020	<0.0050	<0.0050	<0.010	<0.5	180	180



**Table 2 - Soil Analytical Data  
2017 / 2019 Crushed Rock / Overburden  
Whiting Oil & Gas Corporation  
Razor 27I  
Weld County, Colorado**

Sample ID	Date Sampled	Concentration (mg/kg)						
		Benzene	Toluene	Ethylbenzene	Xylenes (Total)	GRO	DRO	TPH
COGCC Table 910-1 Concentration Levels		0.17	85	100	175	NA	NA	500
D28	8/29/2019	<0.0020	<0.0050	<0.0050	<0.010	<0.5	69	69
D29	8/29/2019	<0.0020	<0.0050	<0.0050	<0.010	<0.5	130	130
D30	8/29/2019	<0.0020	<0.0050	<0.0050	<0.010	<0.5	89	89
D31	8/29/2019	<0.0020	<0.0050	<0.0050	<0.010	<0.5	81	81
D32	8/29/2019	<0.0020	<0.0050	<0.0050	<0.010	<0.5	61	61
D33	8/29/2019	<0.0020	<0.0050	<0.0050	<0.010	<0.5	51	51
D34	8/29/2019	<0.0020	<0.0050	<0.0050	<0.010	<0.5	<50	<50
D35	8/29/2019	<0.0020	<0.0050	<0.0050	<0.010	<0.5	51	51
D36	8/29/2019	<0.0020	<0.0050	<0.0050	<0.010	<0.5	51	51
D37	8/29/2019	<0.0020	<0.0050	<0.0050	<0.010	<0.5	65	65
D38	8/29/2019	<0.0020	<0.0050	<0.0050	<0.010	<0.5	51	51
D39	8/29/2019	<0.0020	<0.0050	<0.0050	<0.010	<0.5	<50	<50
D40	8/29/2019	<0.0020	<0.0050	<0.0050	<0.010	<0.5	<50	<50
D41	8/29/2019	<0.0020	<0.0050	<0.0050	<0.010	<0.5	70	70
D42	8/29/2019	<0.0020	<0.0050	<0.0050	<0.010	<0.5	160	160
D43	8/29/2019	<0.0020	<0.0050	<0.0050	<0.010	<0.5	280	280
D44	8/29/2019	<0.0020	<0.0050	<0.0050	<0.010	<0.5	280	280
D45	8/29/2019	<0.0020	<0.0050	<0.0050	<0.010	<0.5	210	210
D46	8/29/2019	<0.0020	<0.0050	<0.0050	<0.010	<0.5	91	91
D47	8/29/2019	<0.0020	<0.0050	<0.0050	<0.010	<0.5	280	280
D48	8/29/2019	<0.0020	<0.0050	<0.0050	<0.010	<0.5	89	89
D49	8/29/2019	<0.0020	<0.0050	<0.0050	<0.010	<0.5	130	130
D50	8/29/2019	<0.0020	<0.0050	<0.0050	<0.010	<0.5	76	76
D51	8/29/2019	<0.0020	<0.0050	<0.0050	<0.010	<0.5	73	73



**Table 2 - Soil Analytical Data  
2017 / 2019 Crushed Rock / Overburden  
Whiting Oil & Gas Corporation  
Razor 27I  
Weld County, Colorado**

Sample ID	Date Sampled	Concentration (mg/kg)						
		Benzene	Toluene	Ethylbenzene	Xylenes (Total)	GRO	DRO	TPH
COGCC Table 910-1 Concentration Levels		0.17	85	100	175	NA	NA	500
D52	8/29/2019	<0.0020	<0.0050	<0.0050	<0.010	<0.5	<50	<50
D53	8/29/2019	<0.0020	<0.0050	<0.0050	<0.010	<0.5	53	53
D54	8/29/2019	<0.0020	<0.0050	<0.0050	<0.010	<0.5	<50	<50
D55	8/29/2019	<0.0020	<0.0050	<0.0050	<0.010	<0.5	61	61
D56	8/29/2019	<0.0020	<0.0050	<0.0050	<0.010	<0.5	<50	<50
D57	8/29/2019	<0.0020	<0.0050	<0.0050	<0.010	<0.5	<50	<50
D58	8/29/2019	<0.0020	<0.0050	<0.0050	<0.010	<0.5	110	110
D59	8/29/2019	<0.0020	<0.0050	<0.0050	<0.010	<0.5	<50	<50
D60	8/29/2019	<0.0020	<0.0050	<0.0050	<0.010	<0.5	<50	<50
2019 Release Overburden								
OB 1-A	9/6/2019	<0.0020	<0.0050	<0.0050	<0.010	<0.5	80	80
OB 2-C	9/6/2019	<0.0020	<0.0050	<0.0050	<0.010	<0.5	65	65
OB 3-D	9/6/2019	<0.0020	<0.0050	<0.0050	<0.010	<0.5	68	68
OB 4-A	9/6/2019	<0.0020	<0.0050	<0.0050	<0.010	<0.5	76	76
OB 5-B	9/6/2019	<0.0020	<0.0050	<0.0050	<0.010	<0.5	55	55
OB 6-B	9/6/2019	<0.0020	<0.0050	<0.0050	<0.010	<0.5	85	85
OB 7-D	9/6/2019	<0.0020	<0.0050	<0.0050	<0.010	<0.5	67	67
OB 8-A	9/6/2019	<0.0020	<0.0050	<0.0050	<0.010	<0.5	62	62
OB 9-A	9/6/2019	<0.0020	<0.0050	<0.0050	<0.010	<0.5	73	73
OB 10-A	9/6/2019	<0.0020	<0.0050	<0.0050	<0.010	<0.5	120	120
OB 11-E	9/6/2019	<0.0020	<0.0050	<0.0050	<0.010	<0.5	<50	<50
OB 12-A	9/6/2019	<0.0020	<0.0050	<0.0050	<0.010	<0.5	130	130
OB 13-B	9/6/2019	<0.0020	<0.0050	<0.0050	<0.010	<0.5	54	54
OB 14-A	9/6/2019	<0.0020	<0.0050	<0.0050	<0.010	<0.5	75	75



**Table 2 - Soil Analytical Data  
2017 / 2019 Crushed Rock / Overburden  
Whiting Oil & Gas Corporation  
Razor 27I  
Weld County, Colorado**

Sample ID	Date Sampled	Concentration (mg/kg)						
		Benzene	Toluene	Ethylbenzene	Xylenes (Total)	GRO	DRO	TPH
COGCC Table 910-1 Concentration Levels		0.17	85	100	175	NA	NA	500
OB 15-B	9/6/2019	<0.0020	<0.0050	<0.0050	<0.010	<0.5	57	57
OB 16-E	9/6/2019	<0.0020	<0.0050	<0.0050	<0.010	<0.5	<50	<50
OB 17-A	9/6/2019	<0.0020	<0.0050	<0.0050	<0.010	<0.5	69	69
OB 18-A	9/6/2019	<0.0020	<0.0050	<0.0050	<0.010	<0.5	56	56
OB 19-B	9/6/2019	<0.0020	<0.0050	<0.0050	<0.010	<0.5	65	65
OB 20-C	9/6/2019	<0.0020	<0.0050	<0.0050	<0.010	<0.5	67	67
OB-21-D	9/6/2019	<0.0020	<0.0050	<0.0050	<0.010	<0.50	1800	1800
	9/13/2019	<0.0020	<0.0050	<0.0050	<0.010	<0.50	<50	<50
OB-22-B	10/17/2019	<0.0020	<0.0050	<0.0050	<0.010	<0.50	<50	<50
OB-23-B	10/17/2019	<0.0020	<0.0050	<0.0050	<0.010	<0.50	<50	<50
OB-24-E	10/17/2019	<0.0020	<0.0050	<0.0050	<0.010	<0.50	<50	<50
OB-25-A	10/17/2019	<0.0020	<0.0050	<0.0050	<0.010	<0.50	<50	<50
OB-26-D	10/17/2019	<0.0020	<0.0050	<0.0050	<0.010	<0.50	63	63
OB-27-C	10/22/2019	<0.0020	<0.0050	<0.0050	<0.010	<0.50	<50	<50
OB-28 D	10/22/2019	<0.0020	<0.0050	<0.0050	<0.010	<0.50	<50	<50
OB-29 D	10/22/2019	<0.0020	<0.0050	<0.0050	<0.010	<0.50	140	140
OB-30-D	10/22/2019	<0.0020	<0.0050	<0.0050	<0.010	<0.50	<50	<50
OB-31-B	11/6/2019	<0.0020	<0.0050	<0.0050	<0.010	<0.50	<50	<50
OB-32-E	11/6/2019	<0.0020	<0.0050	<0.0050	<0.010	<0.50	140	140
OB-33-E	11/6/2019	<0.0020	<0.0050	<0.0050	<0.010	<0.50	<50	<50
OB-34-D	11/6/2019	<0.0020	<0.0050	<0.0050	<0.010	<0.50	<50	<50
OB-35-A	11/6/2019	<0.0020	<0.0050	<0.0050	<0.010	<0.50	<50	<50
OB-36-E	11/6/2019	<0.0020	<0.0050	<0.0050	<0.010	<0.50	<50	<50
OB-37-A	11/6/2019	<0.0020	<0.0050	<0.0050	<0.010	<0.50	<50	<50





**Table 2 - Soil Analytical Data  
2017 / 2019 Crushed Rock / Overburden  
Whiting Oil & Gas Corporation  
Razor 27I  
Weld County, Colorado**

Sample ID	Date Sampled	Concentration (mg/kg)						
		Benzene	Toluene	Ethylbenzene	Xylenes (Total)	GRO	DRO	TPH
COGCC Table 910-1 Concentration Levels		0.17	85	100	175	NA	NA	500

mg/kg - milligrams per kilogram

mmhos/cm - millimhos per centimeter

< - Analytical result is less than the reporting limit

COGCC - Colorado Oil and Gas Conservation Commission

mg/kg - milligrams per kilogram

mmhos/cm - millimhos per centimeter

< - Analytical result is less than the reporting limit

COGCC - Colorado Oil and Gas Conservation Commission