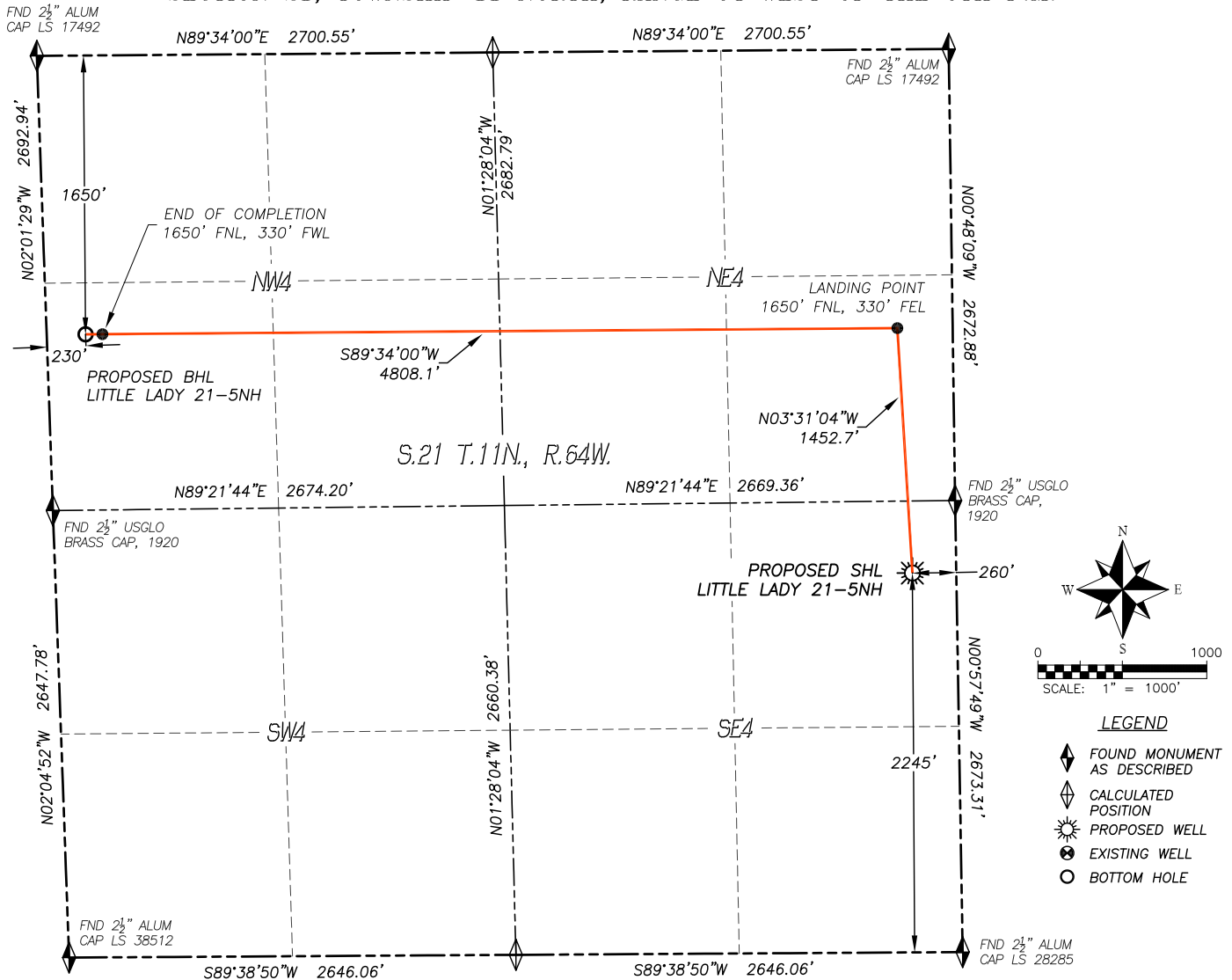


# WELL LOCATION CERTIFICATE

## LITTLE LADY 21-5NH

SECTION 21, TOWNSHIP 11 NORTH, RANGE 64 WEST OF THE 6TH P.M.

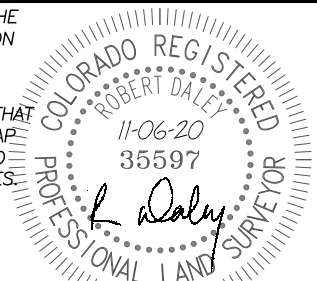


IN ACCORDANCE WITH A REQUEST FROM UPLAND EXPLORATION INC., DALEY LAND SURVEYING, INC. HAS DETERMINED THE SURFACE LOCATION OF THE LITTLE LADY 21-5NH WELL TO BE 2245' FSL, 260' FEL, AND THE BOTTOM HOLE LOCATION TO BE 1650' FNL, 230' FWL, AS MEASURED AT NINETY (90) DEGREES FROM THE SECTION LINES OF SECTION 21, TOWNSHIP 11 NORTH, RANGE 64 WEST, OF THE 6TH PRINCIPAL MERIDIAN, WELD COUNTY, COLORADO.

I HEREBY STATE THAT THIS WELL LOCATION CERTIFICATE WAS PREPARED BY ME OR UNDER MY DIRECT SUPERVISION, THAT THE WORK WAS COMPLETED ON 11/13/2018 FOR AND ON BEHALF OF UPLAND EXPLORATION INC., AND THAT THIS MAP DOES NOT REPRESENT A BOUNDARY SURVEY, IT IS NOT A LAND SURVEY PLAT OR AN IMPROVEMENT SURVEY PLAT AND IT IS NOT TO BE RELIED UPON FOR THE ESTABLISHMENT OF FENCE, BUILDING OR OTHER FUTURE IMPROVEMENT LINES.

### NOTES:

1. BEARINGS FOR THIS MAP ARE ASSUMED AND BASED UPON GPS OBSERVATIONS MADE BETWEEN MONUMENTS LOCATED AT THE EAST QUARTER CORNER AND THE SOUTHEAST CORNER OF SECTION 21, T.11N., R.64W.
2. HORIZONTAL DATUM IS NAD83.
3. VERTICAL DATUM IS NAVD88 AND ORIGINATES FROM THE LOCAL C.O.R.S. NETWORK, UTILIZING THE GEOID12A MODEL.
4. SEE LOCATION DRAWING FOR VISIBLE IMPROVEMENTS WITHIN 500' OF PROPOSED DISTURBED AREA.
5. SURFACE USE: PASTURE/RANGELAND.
6. INST. OPERATOR: KYLE DALEY



FOR AND ON BEHALF OF  
DALEY LAND SURVEYING INC.,  
Robert Daley, PLS 35597

### NEAREST CULTURAL ITEMS:

BUILDING:	2536'± NW
BUILDING UNIT:	2515'± NW
HIGH OCC. BLD. UNIT:	5280'+
DES. OUTSIDE ACTIVITY AREA:	5280'+
PUBLIC ROAD:	2256'± SE
ABOVE GROUND UTILITY:	2494'± NW
RAILROAD:	5280'+
PROPERTY LINE:	260'± E
SCHOOL FACILITY:	5280'+
SCHOOL PROPERTY LINE:	5280'+
CHILDCARE FACILITY:	5280'+

### NAD 83 LATITUDE AND LONGITUDE

#### SURFACE LOCATION:

LATITUDE: N40.90511°  
LONGITUDE: W104.54254°  
ELEV.: 5392'  
PDOP.: 1.6  
QTR/QTR: NE4/SE4

#### LANDING POINT:

LATITUDE: N40.90909°  
LONGITUDE: W104.54281°

#### END OF COMPLETION:

LATITUDE: N40.90913°  
LONGITUDE: W104.55984°

#### BOTTOM HOLE:

LATITUDE: N40.90913°  
LONGITUDE: W104.56020°

