

UPLAND EXPLORATION



Location: COLORADO Slot: SLOT#05 LITTLE LADY 21-3NH (2305 FSL & 260°FEL, SEC.21)
Field: WELD COUNTY (TRUE NORTH NAD 83) Well: LITTLE LADY 21-3NH
Facility: SEC.21-T11N-R64W Wellbore: LITTLE LADY 21-3NH PWB

Grid System: NAD83 / Lambert Colorado SP, Northern Zone (501), US feet
Plot reference wellpath is LITTLE LADY 21-3NH PWB Rev B.0
True vertical depths are referenced to Rig (20) (RT)
Reference wellpath measured depths are referenced to Rig (20) (RT)
Rig (20) (RT) to Mean Sea Level: 5413 feet
Mean Sea Level to Ground level (At Slot: SLOT#05 LITTLE LADY 21-3NH (2305 FSL & 260°FEL, SEC.21)): 0 feet
Depths are in feet
Offset wellpath MDs are referenced to each path's default MD datum
Created by: painsett on 2020-11-06; Database: WellArchitectDB

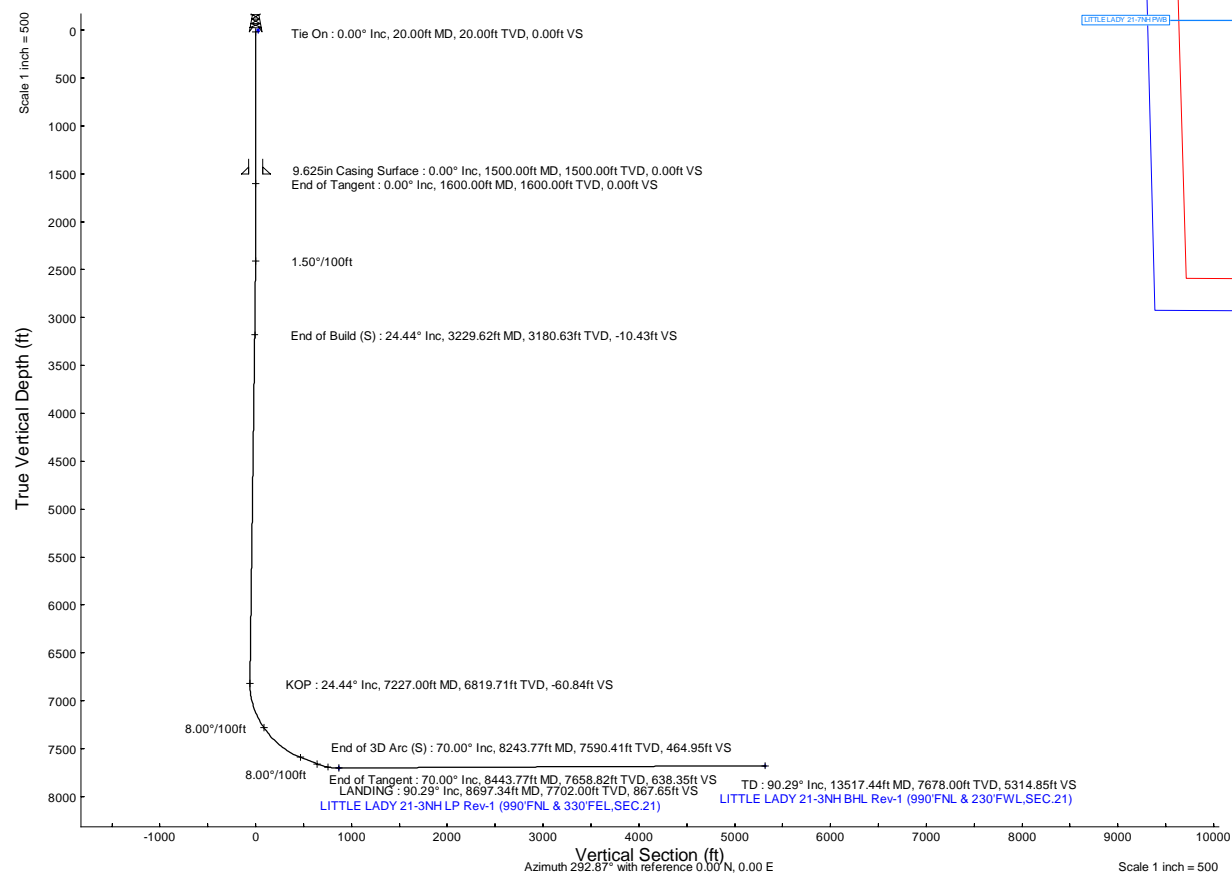
Location Information				
Facility Name		Grid East (US ft)	Grid North (US ft)	Latitude
SEC.21-T11N-R64W		3264604.583	1572171.056	40°54'02.160"N
Slot		Local N (ft)	Local E (ft)	Latitude
SLOT#05 LITTLE LADY 21-3NH (2305 FSL & 260°FEL, SEC.21)		1899.10	84.92	40°54'18.980"N
Rig (20) (RT) to Ground level (At Slot: SLOT#05 LITTLE LADY 21-3NH (2305 FSL & 260°FEL, SEC.21))		5413ft		
Mean Sea Level to Ground level (At Slot: SLOT#05 LITTLE LADY 21-3NH (2305 FSL & 260°FEL, SEC.21))		0ft		
Rig (20) (RT) to Mean Sea Level		5413ft		

Survey Program				
Start MD (ft)	End MD (ft)	Tool	Model	Log Name/Comment
23.00	1500.00	BH NewTrak (2019)	BH NewTrak (2019) (Axis)	LITTLE LADY 21-3NH PWB
1500.00	13517.44	BH AutoTrak CurvePress (2019)	BH AutoTrak CurvePress (2019) (Short spacing)	LITTLE LADY 21-3NH PWB

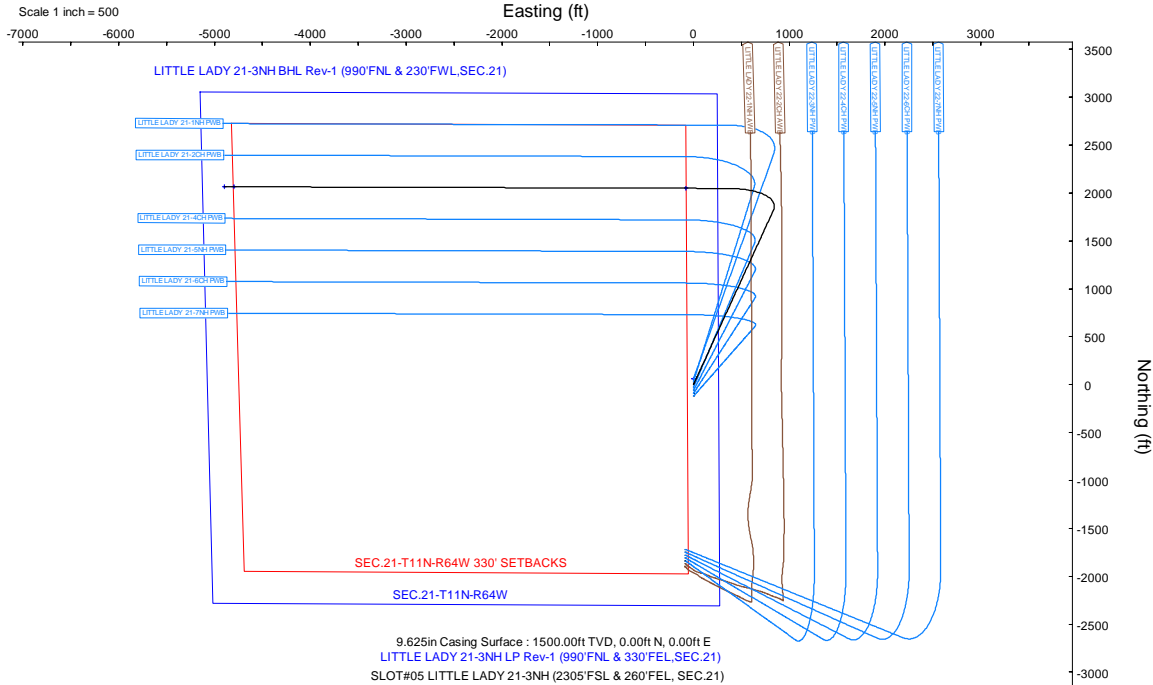
Hole and Casing Sections									
Name	Start MD (ft)	End MD (ft)	Interval (ft)	Start TVD (ft)	End TVD (ft)	Start Local N (ft)	Start Local E (ft)	End Local N (ft)	End Local E (ft)
9.625in Casing Surface	26.00	1500.00	1480.00	26.00	1500.00	0.00	0.00	0.00	0.00

Bottom Hole Location									
MD (ft)	Inc (°)	Az (°)	TVD (ft)	Local N (ft)	Local E (ft)	Grid East (US ft)	Grid North (US ft)	Latitude	Longitude
13517.44	90.285	270.191	7678.00	2065.95	-4896.88	3259750.00	1576084.00	40°54'39.3889"N	104°33'36.9327"W

Targets									
Name	MD (ft)	TVD (ft)	Local N (ft)	Local E (ft)	Grid East (US ft)	Grid North (US ft)	Latitude	Longitude	
SEC.21-T11N-R64W 330° SETBACKS	N/A	0.00	59.75	-0.65	3264667.70	1574130.74	40°54'19.5710"N	104°32'33.1626"W	
SEC.21-T11N-R64W	N/A	13.00	59.75	-0.65	3264667.70	1574130.74	40°54'19.5710"N	104°32'33.1626"W	
LITTLE LADY 21-3NH BHL Rev-1 (990°FNL & 230°FWL, SEC.21)	13517.44	7678.00	2065.95	-4896.88	3259750.00	1576084.00	40°54'39.3889"N	104°33'36.9327"W	
LITTLE LADY 21-3NH BHL (990°FNL & 330°FWL, SEC.21)	N/A	7679.00	2065.87	-4796.88	3259850.00	1576085.00	40°54'39.3883"N	104°33'35.6302"W	
LITTLE LADY 21-3NH LP Rev-1 (990°FNL & 330°FEL, SEC.21)	8697.34	7702.00	2049.91	-76.87	3264570.00	1576120.00	40°54'39.2352"N	104°32'34.1552"W	
LITTLE LADY 21-3NH LP (990°FNL & 330°FEL, SEC.21)	N/A	7703.00	2049.91	-76.87	3264570.00	1576120.00	40°54'39.2352"N	104°32'34.1552"W	



Well Profile Data							
Design Comment	MD (ft)	Inc (°)	Az (°)	TVD (ft)	Local N (ft)	Local E (ft)	DLS (°/100ft)
Tie On	20.00	0.000	24.621	20.00	0.00	0.00	0.00
End of Tangent	1600.00	0.000	24.621	1600.00	0.00	0.00	0.00
End of Build (S)	3229.62	24.444	24.621	3180.63	311.26	142.64	1.50
KOP	7227.00	24.444	24.621	6819.71	1815.02	831.77	0.00
End of 3D Arc (S)	8243.77	70.000	270.191	7590.41	2048.45	359.59	8.00
End of Tangent	8443.77	70.000	270.191	7658.82	2049.08	171.65	0.00
LANDING	8697.34	90.285	270.191	7702.00	2049.91	-76.87	8.00
TD	13517.44	90.285	270.191	7678.00	2065.95	-4896.88	0.00





Planned Wellpath Report

LITTLE LADY 21-3NH PWP Rev-B.0

Page 1 of 9



REFERENCE WELLPATH IDENTIFICATION

Operator	UPLAND EXPLORATION	Well	LITTLE LADY 21-3NH
Field	WELD COUNTY (TRUE NORTH NAD 83)	API/Legal	
Facility	SEC.21-T11N-R64W	Wellbore	LITTLE LADY 21-3NH PWB
Slot	SLOT#05 LITTLE LADY 21-3NH (2305'FSL & 260'FEL, SEC.21)		

REPORT SETUP INFORMATION

Projection System	NAD83 / Lambert Colorado SP, Northern Zone (501), US feet	Software System	WellArchitect® 6.0
North Reference	True	User	Painsetr
Scale	1.000022	Report Generated	11/6/2020 at 1:20:48 PM
Convergence at slot	0.62° East	Database	WellArchitectDB

WELLPATH LOCATION

	Local coordinates		Grid coordinates		Geographic coordinates	
	North[ft]	East[ft]	Easting[US ft]	Northing[US ft]	Latitude	Longitude
Slot Location	1899.10	84.92	3264669.00	1574071.00	40°54'18.9806"N	104°32'33.1541"W
Facility Reference Pt			3264604.58	1572171.06	40°54'0.2160"N	104°32'34.2600"W
Field Reference Pt			3264604.58	1572171.06	40°54'0.2160"N	104°32'34.2600"W

WELLPATH DATUM

Calculation method	Minimum curvature	Rig (20') (RT) to Facility Vertical Datum	5413.00ft
Horizontal Reference Pt	Slot	Rig (20') (RT) to Mean Sea Level	5413.00ft
Vertical Reference Pt	Rig (20') (RT)	Rig (20') (RT) to Ground Level at Slot (SLOT#05 LITTLE LADY 21-3NH (2305'FSL & 260'FEL, SEC.21))	5413.00ft
MD Reference Pt	Rig (20') (RT)	Section Origin	N 0.00, E 0.00 ft
Field Vertical Reference	Mean Sea Level	Section Azimuth	292.87°



Planned Wellpath Report

LITTLE LADY 21-3NH PWP Rev-B.0

Page 2 of 9



REFERENCE WELLPATH IDENTIFICATION

Operator	UPLAND EXPLORATION	Well	LITTLE LADY 21-3NH
Field	WELD COUNTY (TRUE NORTH NAD 83)	API/Legal	
Facility	SEC.21-T11N-R64W	Wellbore	LITTLE LADY 21-3NH PWB
Slot	SLOT#05 LITTLE LADY 21-3NH (2305'FSL & 260'FEL, SEC.21)		

WELLPATH DATA (143 stations) † = interpolated, ‡ = extrapolated station

MD [ft]	Inclination [°]	Azimuth [°]	TVD [ft]	Vert Sect [ft]	North [ft]	East [ft]	Latitude	Longitude	DLS [°/100ft]	Comments
0.00†	0.000	24.621	0.00	0.00	0.00	0.00	40°54'18.9806"N	104°32'33.1541"W	0.00	
20.00	0.000	24.621	20.00	0.00	0.00	0.00	40°54'18.9806"N	104°32'33.1541"W	0.00	Tie On
120.00†	0.000	24.621	120.00	0.00	0.00	0.00	40°54'18.9806"N	104°32'33.1541"W	0.00	
220.00†	0.000	24.621	220.00	0.00	0.00	0.00	40°54'18.9806"N	104°32'33.1541"W	0.00	
320.00†	0.000	24.621	320.00	0.00	0.00	0.00	40°54'18.9806"N	104°32'33.1541"W	0.00	
420.00†	0.000	24.621	420.00	0.00	0.00	0.00	40°54'18.9806"N	104°32'33.1541"W	0.00	
520.00†	0.000	24.621	520.00	0.00	0.00	0.00	40°54'18.9806"N	104°32'33.1541"W	0.00	
620.00†	0.000	24.621	620.00	0.00	0.00	0.00	40°54'18.9806"N	104°32'33.1541"W	0.00	
720.00†	0.000	24.621	720.00	0.00	0.00	0.00	40°54'18.9806"N	104°32'33.1541"W	0.00	
820.00†	0.000	24.621	820.00	0.00	0.00	0.00	40°54'18.9806"N	104°32'33.1541"W	0.00	
920.00†	0.000	24.621	920.00	0.00	0.00	0.00	40°54'18.9806"N	104°32'33.1541"W	0.00	
1020.00†	0.000	24.621	1020.00	0.00	0.00	0.00	40°54'18.9806"N	104°32'33.1541"W	0.00	
1120.00†	0.000	24.621	1120.00	0.00	0.00	0.00	40°54'18.9806"N	104°32'33.1541"W	0.00	
1220.00†	0.000	24.621	1220.00	0.00	0.00	0.00	40°54'18.9806"N	104°32'33.1541"W	0.00	
1320.00†	0.000	24.621	1320.00	0.00	0.00	0.00	40°54'18.9806"N	104°32'33.1541"W	0.00	
1420.00†	0.000	24.621	1420.00	0.00	0.00	0.00	40°54'18.9806"N	104°32'33.1541"W	0.00	
1520.00†	0.000	24.621	1520.00	0.00	0.00	0.00	40°54'18.9806"N	104°32'33.1541"W	0.00	
1600.00	0.000	24.621	1600.00	0.00	0.00	0.00	40°54'18.9806"N	104°32'33.1541"W	0.00	End of Tangent
1620.00†	0.300	24.621	1620.00	0.00	0.05	0.02	40°54'18.9811"N	104°32'33.1538"W	1.50	
1720.00†	1.800	24.621	1719.98	-0.06	1.71	0.79	40°54'18.9975"N	104°32'33.1439"W	1.50	
1820.00†	3.300	24.621	1819.88	-0.19	5.76	2.64	40°54'19.0375"N	104°32'33.1197"W	1.50	
1920.00†	4.800	24.621	1919.63	-0.41	12.18	5.58	40°54'19.1009"N	104°32'33.0814"W	1.50	
2020.00†	6.300	24.621	2019.15	-0.70	20.97	9.61	40°54'19.1878"N	104°32'33.0289"W	1.50	
2120.00†	7.800	24.621	2118.40	-1.08	32.13	14.72	40°54'19.2980"N	104°32'32.9623"W	1.50	
2220.00†	9.300	24.621	2217.28	-1.53	45.64	20.92	40°54'19.4316"N	104°32'32.8817"W	1.50	
2320.00†	10.800	24.621	2315.74	-2.06	61.51	28.19	40°54'19.5883"N	104°32'32.7870"W	1.50	
2420.00†	12.300	24.621	2413.72	-2.67	79.71	36.53	40°54'19.7682"N	104°32'32.6784"W	1.50	
2520.00†	13.800	24.621	2511.13	-3.36	100.23	45.93	40°54'19.9710"N	104°32'32.5559"W	1.50	
2620.00†	15.300	24.621	2607.92	-4.13	123.07	56.40	40°54'20.1966"N	104°32'32.4196"W	1.50	
2720.00†	16.800	24.621	2704.02	-4.97	148.21	67.92	40°54'20.4450"N	104°32'32.2696"W	1.50	



Planned Wellpath Report

LITTLE LADY 21-3NH PWP Rev-B.0

Page 3 of 9



REFERENCE WELLPATH IDENTIFICATION

Operator	UPLAND EXPLORATION	Well	LITTLE LADY 21-3NH
Field	WELD COUNTY (TRUE NORTH NAD 83)	API/Legal	
Facility	SEC.21-T11N-R64W	Wellbore	LITTLE LADY 21-3NH PWB
Slot	SLOT#05 LITTLE LADY 21-3NH (2305'FSL & 260'FEL, SEC.21)		

WELLPATH DATA (143 stations) † = interpolated, ‡ = extrapolated station

MD [ft]	Inclination [°]	Azimuth [°]	TVD [ft]	Vert Sect [ft]	North [ft]	East [ft]	Latitude	Longitude	DLS [°/100ft]	Comments
2820.00†	18.300	24.621	2799.36	-5.89	175.62	80.48	40°54'20.7158"N	104°32'32.1060"W	1.50	
2920.00†	19.800	24.621	2893.88	-6.88	205.29	94.08	40°54'21.0090"N	104°32'31.9289"W	1.50	
3020.00†	21.300	24.621	2987.52	-7.95	237.20	108.70	40°54'21.3243"N	104°32'31.7384"W	1.50	
3120.00†	22.800	24.621	3080.20	-9.09	271.33	124.34	40°54'21.6615"N	104°32'31.5347"W	1.50	
3220.00†	24.300	24.621	3171.87	-10.31	307.65	140.99	40°54'22.0204"N	104°32'31.3180"W	1.50	
3229.62	24.444	24.621	3180.63	-10.43	311.26	142.64	40°54'22.0560"N	104°32'31.2964"W	1.50	End of Build (S)
3320.00†	24.444	24.621	3262.91	-11.57	345.26	158.22	40°54'22.3920"N	104°32'31.0935"W	0.00	
3420.00†	24.444	24.621	3353.95	-12.83	382.88	175.46	40°54'22.7637"N	104°32'30.8690"W	0.00	
3520.00†	24.444	24.621	3444.98	-14.09	420.49	192.70	40°54'23.1354"N	104°32'30.6445"W	0.00	
3620.00†	24.444	24.621	3536.02	-15.36	458.11	209.94	40°54'23.5071"N	104°32'30.4199"W	0.00	
3720.00†	24.444	24.621	3627.06	-16.62	495.73	227.18	40°54'23.8788"N	104°32'30.1954"W	0.00	
3820.00†	24.444	24.621	3718.09	-17.88	533.35	244.42	40°54'24.2505"N	104°32'29.9709"W	0.00	
3920.00†	24.444	24.621	3809.13	-19.14	570.97	261.66	40°54'24.6222"N	104°32'29.7464"W	0.00	
4020.00†	24.444	24.621	3900.17	-20.40	608.59	278.90	40°54'24.9939"N	104°32'29.5218"W	0.00	
4120.00†	24.444	24.621	3991.20	-21.66	646.21	296.14	40°54'25.3656"N	104°32'29.2973"W	0.00	
4220.00†	24.444	24.621	4082.24	-22.92	683.83	313.38	40°54'25.7373"N	104°32'29.0728"W	0.00	
4320.00†	24.444	24.621	4173.27	-24.18	721.44	330.62	40°54'26.1090"N	104°32'28.8482"W	0.00	
4420.00†	24.444	24.621	4264.31	-25.44	759.06	347.86	40°54'26.4807"N	104°32'28.6237"W	0.00	
4520.00†	24.444	24.621	4355.35	-26.70	796.68	365.10	40°54'26.8524"N	104°32'28.3992"W	0.00	
4620.00†	24.444	24.621	4446.38	-27.96	834.30	382.34	40°54'27.2241"N	104°32'28.1747"W	0.00	
4720.00†	24.444	24.621	4537.42	-29.23	871.92	399.58	40°54'27.5958"N	104°32'27.9501"W	0.00	
4820.00†	24.444	24.621	4628.46	-30.49	909.54	416.81	40°54'27.9675"N	104°32'27.7256"W	0.00	
4920.00†	24.444	24.621	4719.49	-31.75	947.16	434.05	40°54'28.3392"N	104°32'27.5011"W	0.00	
5020.00†	24.444	24.621	4810.53	-33.01	984.78	451.29	40°54'28.7109"N	104°32'27.2765"W	0.00	
5120.00†	24.444	24.621	4901.57	-34.27	1022.39	468.53	40°54'29.0826"N	104°32'27.0520"W	0.00	
5220.00†	24.444	24.621	4992.60	-35.53	1060.01	485.77	40°54'29.4543"N	104°32'26.8275"W	0.00	
5320.00†	24.444	24.621	5083.64	-36.79	1097.63	503.01	40°54'29.8260"N	104°32'26.6029"W	0.00	
5420.00†	24.444	24.621	5174.67	-38.05	1135.25	520.25	40°54'30.1977"N	104°32'26.3784"W	0.00	
5520.00†	24.444	24.621	5265.71	-39.31	1172.87	537.49	40°54'30.5694"N	104°32'26.1539"W	0.00	
5620.00†	24.444	24.621	5356.75	-40.57	1210.49	554.73	40°54'30.9411"N	104°32'25.9293"W	0.00	



Planned Wellpath Report

LITTLE LADY 21-3NH PWP Rev-B.0

Page 4 of 9



REFERENCE WELLPATH IDENTIFICATION			
Operator	UPLAND EXPLORATION	Well	LITTLE LADY 21-3NH
Field	WELD COUNTY (TRUE NORTH NAD 83)	API/Legal	
Facility	SEC.21-T11N-R64W	Wellbore	LITTLE LADY 21-3NH PWB
Slot	SLOT#05 LITTLE LADY 21-3NH (2305'FSL & 260'FEL, SEC.21)		

WELLPATH DATA (143 stations) † = interpolated, ‡ = extrapolated station

MD [ft]	Inclination [°]	Azimuth [°]	TVD [ft]	Vert Sect [ft]	North [ft]	East [ft]	Latitude	Longitude	DLS [°/100ft]	Comments
5720.00†	24.444	24.621	5447.78	-41.83	1248.11	571.97	40°54'31.3128"N	104°32'25.7048"W	0.00	
5820.00†	24.444	24.621	5538.82	-43.10	1285.73	589.21	40°54'31.6845"N	104°32'25.4802"W	0.00	
5920.00†	24.444	24.621	5629.86	-44.36	1323.34	606.45	40°54'32.0562"N	104°32'25.2557"W	0.00	
6020.00†	24.444	24.621	5720.89	-45.62	1360.96	623.69	40°54'32.4279"N	104°32'25.0312"W	0.00	
6120.00†	24.444	24.621	5811.93	-46.88	1398.58	640.93	40°54'32.7996"N	104°32'24.8066"W	0.00	
6220.00†	24.444	24.621	5902.97	-48.14	1436.20	658.17	40°54'33.1713"N	104°32'24.5821"W	0.00	
6320.00†	24.444	24.621	5994.00	-49.40	1473.82	675.41	40°54'33.5430"N	104°32'24.3575"W	0.00	
6420.00†	24.444	24.621	6085.04	-50.66	1511.44	692.65	40°54'33.9147"N	104°32'24.1330"W	0.00	
6520.00†	24.444	24.621	6176.08	-51.92	1549.06	709.89	40°54'34.2864"N	104°32'23.9085"W	0.00	
6620.00†	24.444	24.621	6267.11	-53.18	1586.68	727.13	40°54'34.6581"N	104°32'23.6839"W	0.00	
6720.00†	24.444	24.621	6358.15	-54.44	1624.29	744.37	40°54'35.0297"N	104°32'23.4594"W	0.00	
6820.00†	24.444	24.621	6449.18	-55.70	1661.91	761.61	40°54'35.4014"N	104°32'23.2348"W	0.00	
6920.00†	24.444	24.621	6540.22	-56.97	1699.53	778.85	40°54'35.7731"N	104°32'23.0103"W	0.00	
7020.00†	24.444	24.621	6631.26	-58.23	1737.15	796.09	40°54'36.1448"N	104°32'22.7857"W	0.00	
7120.00†	24.444	24.621	6722.29	-59.49	1774.77	813.32	40°54'36.5165"N	104°32'22.5612"W	0.00	
7220.00†	24.444	24.621	6813.33	-60.75	1812.39	830.56	40°54'36.8882"N	104°32'22.3366"W	0.00	
7227.00	24.444	24.621	6819.71	-60.84	1815.02	831.77	40°54'36.9143"N	104°32'22.3209"W	0.00	KOP
7320.00†	21.636	6.927	6905.38	-56.71	1849.58	841.87	40°54'37.2557"N	104°32'22.1894"W	8.00	
7420.00†	21.139	344.913	6998.64	-40.52	1885.35	839.40	40°54'37.6092"N	104°32'22.2216"W	8.00	
7520.00†	23.406	324.554	7091.31	-12.48	1919.00	823.16	40°54'37.9416"N	104°32'22.4331"W	8.00	
7620.00†	27.766	308.930	7181.59	26.87	1949.87	793.47	40°54'38.2466"N	104°32'22.8197"W	8.00	
7720.00†	33.407	297.725	7267.71	76.76	1977.35	750.91	40°54'38.5182"N	104°32'23.3740"W	8.00	
7820.00†	39.785	289.593	7348.00	136.23	2000.93	696.31	40°54'38.7512"N	104°32'24.0851"W	8.00	
7920.00†	46.593	283.438	7420.90	204.12	2020.13	630.73	40°54'38.9409"N	104°32'24.9392"W	8.00	
8020.00†	53.665	278.553	7484.99	279.10	2034.59	555.45	40°54'39.0838"N	104°32'25.9197"W	8.00	
8120.00†	60.901	274.492	7539.02	359.72	2044.01	471.93	40°54'39.1770"N	104°32'27.0075"W	8.00	
8220.00†	68.243	270.971	7581.94	444.40	2048.23	381.80	40°54'39.2186"N	104°32'28.1814"W	8.00	
8243.77	70.000	270.191	7590.41	464.95	2048.45	359.59	40°54'39.2208"N	104°32'28.4707"W	8.00	End of 3D Arc (S)
8320.00†	70.000	270.191	7616.48	531.04	2048.69	287.96	40°54'39.2232"N	104°32'29.4036"W	0.00	
8420.00†	70.000	270.191	7650.69	617.74	2049.01	193.99	40°54'39.2263"N	104°32'30.6275"W	0.00	



Planned Wellpath Report

LITTLE LADY 21-3NH PWP Rev-B.0

Page 5 of 9



REFERENCE WELLPATH IDENTIFICATION			
Operator	UPLAND EXPLORATION	Well	LITTLE LADY 21-3NH
Field	WELD COUNTY (TRUE NORTH NAD 83)	API/Legal	
Facility	SEC.21-T11N-R64W	Wellbore	LITTLE LADY 21-3NH PWB
Slot	SLOT#05 LITTLE LADY 21-3NH (2305'FSL & 260'FEL, SEC.21)		

WELLPATH DATA (143 stations) † = interpolated, ‡ = extrapolated station

MD [ft]	Inclination [°]	Azimuth [°]	TVD [ft]	Vert Sect [ft]	North [ft]	East [ft]	Latitude	Longitude	DLS [°/100ft]	Comments
8443.77	70.000	270.191	7658.82	638.35	2049.08	171.65	40°54'39.2271"N	104°32'30.9185"W	0.00	End of Tangent
8520.00†	76.098	270.191	7681.03	705.60	2049.32	98.77	40°54'39.2295"N	104°32'31.8677"W	8.00	
8620.00†	84.098	270.191	7698.21	796.41	2049.65	0.34	40°54'39.2327"N	104°32'33.1497"W	8.00	
8697.34	90.285	270.191	7702.00†	867.65	2049.91	-76.87	40°54'39.2352"N	104°32'34.1552"W	8.00	LANDING
8720.00†	90.285	270.191	7701.89	888.56	2049.98	-99.53	40°54'39.2360"N	104°32'34.4504"W	0.00	
8820.00†	90.285	270.191	7701.39	980.82	2050.32	-199.53	40°54'39.2393"N	104°32'35.7528"W	0.00	
8920.00†	90.285	270.191	7700.89	1073.09	2050.65	-299.53	40°54'39.2425"N	104°32'37.0552"W	0.00	
9020.00†	90.285	270.191	7700.39	1165.35	2050.98	-399.52	40°54'39.2458"N	104°32'38.3576"W	0.00	
9120.00†	90.285	270.191	7699.90	1257.61	2051.32	-499.52	40°54'39.2491"N	104°32'39.6600"W	0.00	
9220.00†	90.285	270.191	7699.40	1349.88	2051.65	-599.52	40°54'39.2524"N	104°32'40.9624"W	0.00	
9320.00†	90.285	270.191	7698.90	1442.14	2051.98	-699.52	40°54'39.2556"N	104°32'42.2648"W	0.00	
9420.00†	90.285	270.191	7698.40	1534.40	2052.31	-799.52	40°54'39.2589"N	104°32'43.5672"W	0.00	
9520.00†	90.285	270.191	7697.90	1626.67	2052.65	-899.51	40°54'39.2621"N	104°32'44.8697"W	0.00	
9620.00†	90.285	270.191	7697.41	1718.93	2052.98	-999.51	40°54'39.2654"N	104°32'46.1721"W	0.00	
9720.00†	90.285	270.191	7696.91	1811.19	2053.31	-1099.51	40°54'39.2686"N	104°32'47.4745"W	0.00	
9820.00†	90.285	270.191	7696.41	1903.46	2053.65	-1199.51	40°54'39.2719"N	104°32'48.7769"W	0.00	
9920.00†	90.285	270.191	7695.91	1995.72	2053.98	-1299.51	40°54'39.2751"N	104°32'50.0793"W	0.00	
10020.00†	90.285	270.191	7695.41	2087.99	2054.31	-1399.51	40°54'39.2783"N	104°32'51.3817"W	0.00	
10120.00†	90.285	270.191	7694.92	2180.25	2054.64	-1499.50	40°54'39.2816"N	104°32'52.6841"W	0.00	
10220.00†	90.285	270.191	7694.42	2272.51	2054.98	-1599.50	40°54'39.2848"N	104°32'53.9865"W	0.00	
10320.00†	90.285	270.191	7693.92	2364.78	2055.31	-1699.50	40°54'39.2880"N	104°32'55.2889"W	0.00	
10420.00†	90.285	270.191	7693.42	2457.04	2055.64	-1799.50	40°54'39.2912"N	104°32'56.5913"W	0.00	
10520.00†	90.285	270.191	7692.92	2549.30	2055.98	-1899.50	40°54'39.2945"N	104°32'57.8938"W	0.00	
10620.00†	90.285	270.191	7692.43	2641.57	2056.31	-1999.50	40°54'39.2977"N	104°32'59.1962"W	0.00	
10720.00†	90.285	270.191	7691.93	2733.83	2056.64	-2099.49	40°54'39.3009"N	104°33'0.4986"W	0.00	
10820.00†	90.285	270.191	7691.43	2826.09	2056.97	-2199.49	40°54'39.3041"N	104°33'1.8010"W	0.00	
10920.00†	90.285	270.191	7690.93	2918.36	2057.31	-2299.49	40°54'39.3073"N	104°33'3.1034"W	0.00	
11020.00†	90.285	270.191	7690.44	3010.62	2057.64	-2399.49	40°54'39.3105"N	104°33'4.4058"W	0.00	
11120.00†	90.285	270.191	7689.94	3102.88	2057.97	-2499.49	40°54'39.3137"N	104°33'5.7082"W	0.00	
11220.00†	90.285	270.191	7689.44	3195.15	2058.31	-2599.48	40°54'39.3168"N	104°33'7.0106"W	0.00	



Planned Wellpath Report

LITTLE LADY 21-3NH PWP Rev-B.0

Page 6 of 9



REFERENCE WELLPATH IDENTIFICATION

Operator	UPLAND EXPLORATION	Well	LITTLE LADY 21-3NH
Field	WELD COUNTY (TRUE NORTH NAD 83)	API/Legal	
Facility	SEC.21-T11N-R64W	Wellbore	LITTLE LADY 21-3NH PWB
Slot	SLOT#05 LITTLE LADY 21-3NH (2305'FSL & 260'FEL, SEC.21)		

WELLPATH DATA (143 stations) † = interpolated, ‡ = extrapolated station

MD [ft]	Inclination [°]	Azimuth [°]	TVD [ft]	Vert Sect [ft]	North [ft]	East [ft]	Latitude	Longitude	DLS [°/100ft]	Comments
11320.00†	90.285	270.191	7688.94	3287.41	2058.64	-2699.48	40°54'39.3200"N	104°33'8.3130"W	0.00	
11420.00†	90.285	270.191	7688.44	3379.68	2058.97	-2799.48	40°54'39.3232"N	104°33'9.6155"W	0.00	
11520.00†	90.285	270.191	7687.95	3471.94	2059.30	-2899.48	40°54'39.3264"N	104°33'10.9179"W	0.00	
11620.00†	90.285	270.191	7687.45	3564.20	2059.64	-2999.48	40°54'39.3296"N	104°33'12.2203"W	0.00	
11720.00†	90.285	270.191	7686.95	3656.47	2059.97	-3099.48	40°54'39.3327"N	104°33'13.5227"W	0.00	
11820.00†	90.285	270.191	7686.45	3748.73	2060.30	-3199.47	40°54'39.3359"N	104°33'14.8251"W	0.00	
11920.00†	90.285	270.191	7685.95	3840.99	2060.64	-3299.47	40°54'39.3390"N	104°33'16.1275"W	0.00	
12020.00†	90.285	270.191	7685.46	3933.26	2060.97	-3399.47	40°54'39.3422"N	104°33'17.4299"W	0.00	
12120.00†	90.285	270.191	7684.96	4025.52	2061.30	-3499.47	40°54'39.3453"N	104°33'18.7323"W	0.00	
12220.00†	90.285	270.191	7684.46	4117.78	2061.63	-3599.47	40°54'39.3485"N	104°33'20.0347"W	0.00	
12320.00†	90.285	270.191	7683.96	4210.05	2061.97	-3699.46	40°54'39.3516"N	104°33'21.3371"W	0.00	
12420.00†	90.285	270.191	7683.46	4302.31	2062.30	-3799.46	40°54'39.3548"N	104°33'22.6396"W	0.00	
12520.00†	90.285	270.191	7682.97	4394.58	2062.63	-3899.46	40°54'39.3579"N	104°33'23.9420"W	0.00	
12620.00†	90.285	270.191	7682.47	4486.84	2062.97	-3999.46	40°54'39.3610"N	104°33'25.2444"W	0.00	
12720.00†	90.285	270.191	7681.97	4579.10	2063.30	-4099.46	40°54'39.3642"N	104°33'26.5468"W	0.00	
12820.00†	90.285	270.191	7681.47	4671.37	2063.63	-4199.46	40°54'39.3673"N	104°33'27.8492"W	0.00	
12920.00†	90.285	270.191	7680.97	4763.63	2063.96	-4299.45	40°54'39.3704"N	104°33'29.1516"W	0.00	
13020.00†	90.285	270.191	7680.48	4855.89	2064.30	-4399.45	40°54'39.3735"N	104°33'30.4540"W	0.00	
13120.00†	90.285	270.191	7679.98	4948.16	2064.63	-4499.45	40°54'39.3766"N	104°33'31.7564"W	0.00	
13220.00†	90.285	270.191	7679.48	5040.42	2064.96	-4599.45	40°54'39.3797"N	104°33'33.0588"W	0.00	
13320.00†	90.285	270.191	7678.98	5132.68	2065.30	-4699.45	40°54'39.3828"N	104°33'34.3613"W	0.00	
13420.00†	90.285	270.191	7678.49	5224.95	2065.63	-4799.44	40°54'39.3859"N	104°33'35.6637"W	0.00	
13517.44	90.285	270.191	7678.00‡	5314.85	2065.95	-4896.88	40°54'39.3889"N	104°33'36.9327"W	0.00	TD



Planned Wellpath Report

LITTLE LADY 21-3NH PWP Rev-B.0

Page 7 of 9



REFERENCE WELLPATH IDENTIFICATION

Operator	UPLAND EXPLORATION	Well	LITTLE LADY 21-3NH
Field	WELD COUNTY (TRUE NORTH NAD 83)	API/Legal	
Facility	SEC.21-T11N-R64W	Wellbore	LITTLE LADY 21-3NH PWB
Slot	SLOT#05 LITTLE LADY 21-3NH (2305'FSL & 260'FEL, SEC.21)		

HOLE & CASING SECTIONS

- Ref Wellbore: LITTLE LADY 21-3NH PWB Ref Wellpath: LITTLE LADY 21-3NH PWP Rev-B.0

String/Diameter	Start MD [ft]	End MD [ft]	Interval [ft]	Start TVD [ft]	End TVD [ft]	Start N/S [ft]	Start E/W [ft]	End N/S [ft]	End E/W [ft]
9.625in Casing Surface	20.00	1500.00	1480.00	20.00	1500.00	0.00	0.00	0.00	0.00

TARGETS

Name	MD [ft]	TVD [ft]	North [ft]	East [ft]	Grid East [US ft]	Grid North [US ft]	Latitude	Longitude	Shape
SEC.21-T11N-R64W 330' SETBACKS	N/A	0.00	59.75	-0.65	3264667.70	1574130.74	40°54'19.5710"N	104°32'33.1626"W	polygon
	2D Polygon: dimensions not calculated								
SEC.21-T11N-R64W	N/A	13.00	59.75	-0.65	3264667.70	1574130.74	40°54'19.5710"N	104°32'33.1626"W	polygon
	2D Polygon: dimensions not calculated								
2) LITTLE LADY 21-3NH BHL Rev-1 (990'FNL & 230'FWL,SEC.21)	13517.44	7678.00	2065.95	-4896.88	3259750.00	1576084.00	40°54'39.3889"N	104°33'36.9327"W	point
LITTLE LADY 21-3NH BHL (990'FNL & 330'FWL,SEC.21)	N/A	7679.00	2065.87	-4796.88	3259850.00	1576085.00	40°54'39.3883"N	104°33'35.6302"W	point
1) LITTLE LADY 21-3NH LP Rev-1 (990'FNL & 330'FEL,SEC.21)	8697.34	7702.00	2049.91	-76.87	3264570.00	1576120.00	40°54'39.2352"N	104°32'34.1552"W	point
LITTLE LADY 21-3NH LP (990'FNL & 330'FEL,SEC.21)	N/A	7703.00	2049.91	-76.87	3264570.00	1576120.00	40°54'39.2352"N	104°32'34.1552"W	point



Planned Wellpath Report

LITTLE LADY 21-3NH PWP Rev-B.0

Page 8 of 9



REFERENCE WELLPATH IDENTIFICATION

Operator	UPLAND EXPLORATION	Well	LITTLE LADY 21-3NH
Field	WELD COUNTY (TRUE NORTH NAD 83)	API/Legal	
Facility	SEC.21-T11N-R64W	Wellbore	LITTLE LADY 21-3NH PWB
Slot	SLOT#05 LITTLE LADY 21-3NH (2305'FSL & 260'FEL, SEC.21)		

SURVEY PROGRAM -

Ref Wellbore: LITTLE LADY 21-3NH PWB Ref Wellpath: LITTLE LADY 21-3NH PWP Rev-B.0

Start MD [ft]	End MD [ft]	Positional Uncertainty Model	Log Name/Comment	Wellbore
20.00	1500.00	BH NaviTrak (2019) (Axial)		LITTLE LADY 21-3NH PWB
1500.00	13517.44	BH AutoTrak Curve/eXpress (2019) (Short spacing)		LITTLE LADY 21-3NH PWB



Planned Wellpath Report

LITTLE LADY 21-3NH PWP Rev-B.0

Page 9 of 9



REFERENCE WELLPATH IDENTIFICATION

Operator	UPLAND EXPLORATION	Well	LITTLE LADY 21-3NH
Field	WELD COUNTY (TRUE NORTH NAD 83)	API/Legal	
Facility	SEC.21-T11N-R64W	Wellbore	LITTLE LADY 21-3NH PWB
Slot	SLOT#05 LITTLE LADY 21-3NH (2305'FSL & 260'FEL, SEC.21)		

DESIGN COMMENTS

MD [ft]	Inclination [°]	Azimuth [°]	TVD [ft]	Comment
20.00	0.000	24.621	20.00	Tie On
1600.00	0.000	24.621	1600.00	End of Tangent
3229.62	24.444	24.621	3180.63	End of Build (S)
7227.00	24.444	24.621	6819.71	KOP
8243.77	70.000	270.191	7590.41	End of 3D Arc (S)
8443.77	70.000	270.191	7658.82	End of Tangent
8697.34	90.285	270.191	7702.00	LANDING
13517.44	90.285	270.191	7678.00	TD



Closest Approach Clearance Summary Report

LITTLE LADY 21-3NH PWP Rev-B.0 - Baker Hughes
Stop Drilling (offset is HSE risk) (pre-2019)

Page 1 of 3



REFERENCE WELLPATH IDENTIFICATION

Operator	UPLAND EXPLORATION	Well	LITTLE LADY 21-3NH
Field	WELD COUNTY (TRUE NORTH NAD 83)	API/Legal	
Facility	SEC.21-T11N-R64W	Wellbore	LITTLE LADY 21-3NH PWB
Slot	SLOT#05 LITTLE LADY 21-3NH (2305'FSL & 260'FEL, SEC.21)		

REPORT SETUP INFORMATION

Projection System	NAD83 / Lambert Colorado SP, Northern Zone (501), US feet	Software System	WellArchitect® 6.0
North Reference	True	User	Painsetr
Scale	1.000022	Report Generated	11/6/2020 at 1:20:51 PM
Convergence at slot	0.62° East	Database	WellArchitectDB

WELLPATH LOCATION

	Local coordinates		Grid coordinates		Geographic coordinates	
	North[ft]	East[ft]	Easting[US ft]	Northing[US ft]	Latitude	Longitude
Slot Location	1899.10	84.92	3264669.00	1574071.00	40°54'18.9806"N	104°32'33.1541"W
Facility Reference Pt			3264604.58	1572171.06	40°54'0.2160"N	104°32'34.2600"W
Field Reference Pt			3264604.58	1572171.06	40°54'0.2160"N	104°32'34.2600"W

WELLPATH DATUM

Calculation method	Minimum Curvature	Rig (20') (RT) to Facility Vertical Datum	5413.00ft
Horizontal Reference Pt	Slot	Rig (20') (RT) to Mean Sea Level	5413.00ft
Vertical Reference Pt	Rig (20') (RT)	Rig (20') (RT) to Ground Level at Slot (SLOT#05 LITTLE LADY 21-3NH (2305'FSL & 260'FEL, SEC.21))	5413.00ft
MD Reference Pt	Rig (20') (RT)		
Field Vertical Reference	Mean Sea Level		

POSITIONAL UNCERTAINTY CALCULATION SETTINGS

Ellipse Confidence Limit	3.00 Std Dev	Ellipse Start MD	20.00ft	Surface Position Uncertainty	included
Declination	8.06° East of TN	Dip Angle	67.10°	Mag Field Strength	52445 nT
Slot Surface Uncertainty @1SD		Horizontal	0.100ft	Vertical	1.000ft
Facility Surface Uncertainty @1SD		Horizontal	8.200ft	Vertical	3.000ft

Positional Uncertainty values in the WELLPATH DATA table are the projection of the ellipsoid of uncertainty onto the vertical and horizontal planes



Closest Approach Clearance Summary Report

LITTLE LADY 21-3NH PWP Rev-B.0 - Baker Hughes
Stop Drilling (offset is HSE risk) (pre-2019)

Page 2 of 3



REFERENCE WELLPATH IDENTIFICATION

Operator	UPLAND EXPLORATION	Well	LITTLE LADY 21-3NH
Field	WELD COUNTY (TRUE NORTH NAD 83)	API/Legal	
Facility	SEC.21-T11N-R64W	Wellbore	LITTLE LADY 21-3NH PWB
Slot	SLOT#05 LITTLE LADY 21-3NH (2305'FSL & 260'FEL, SEC.21)		

PROXIMITY-SCAN RULE

Rule Name	Baker Hughes Stop Drilling (offset is HSE risk) (pre-2019)	Rule Based On	Ratio
Plane of Rule	Closest Approach	Threshold Value	1.00
Include Casing & Hole Size	yes	Apply Cone of Safety	no

HOLE & CASING SECTIONS

- Ref Wellbore: LITTLE LADY 21-3NH PWB Ref Wellpath: LITTLE LADY 21-3NH PWP Rev-B.0

String/Diameter	Start MD [ft]	End MD [ft]	Interval [ft]	Start TVD [ft]	End TVD [ft]	Start N/S [ft]	Start E/W [ft]	End N/S [ft]	End E/W [ft]
9.625in Casing Surface	20.00	1500.00	1480.00	20.00	1500.00	0.00	0.00	0.00	0.00

SURVEY PROGRAM -

Ref Wellbore: LITTLE LADY 21-3NH PWB Ref Wellpath: LITTLE LADY 21-3NH PWP Rev-B.0

Start MD [ft]	End MD [ft]	Positional Uncertainty Model	Log Name/Comment	Wellbore
20.00	1500.00	BH NaviTrak (2019) (Axial)		LITTLE LADY 21-3NH PWB
1500.00	13517.44	BH AutoTrak Curve/eXpress (2019) (Short spacing)		LITTLE LADY 21-3NH PWB



Closest Approach Clearance Summary Report

LITTLE LADY 21-3NH PWP Rev-B.0 - Baker Hughes
Stop Drilling (offset is HSE risk) (pre-2019)

Page 3 of 3



REFERENCE WELLPATH IDENTIFICATION

Operator	UPLAND EXPLORATION	Well	LITTLE LADY 21-3NH
Field	WELD COUNTY (TRUE NORTH NAD 83)	API/Legal	
Facility	SEC.21-T11N-R64W	Wellbore	LITTLE LADY 21-3NH PWB
Slot	SLOT#05 LITTLE LADY 21-3NH (2305'FSL & 260'FEL, SEC.21)		

CALCULATION RANGE & CUTOFF

From: 20.00ft MD	To: 13517.44ft MD	C-C Cutoff: (none)
------------------	-------------------	--------------------

OFFSET WELL CLEARANCE SUMMARY (13 Offset Wellpaths selected) Ratios are calculated in Closest Approach plane

Offset Facility	Offset Slot	Offset Well	Offset Wellbore	Offset Wellpath	Wellbore Status	C-C Clearance Distance			Rule Separation Ratio			
						Ref MD [ft]	Min C-C Clear Dist [ft]	Diverging from MD [ft]	Ref MD of Min Ratio [ft]	Min Ratio	Min Ratio Dvrg from [ft]	Rule Status
SEC.21-T11N-R64W	SLOT#06 LITTLE LADY 21-4CH (2275'FSL & 260'FEL, SC.21)	LITTLE LADY 21-4CH	LITTLE LADY 21-4CH PWB	LITTLE LADY 21-4CH PWP Rev-A.0	Planned	2831.50	26.85	8697.34	13506.80	0.85	13506.80	FAIL
SEC.21-T11N-R64W	SLOT#04 LITTLE LADY 21-2CH (2335'FSL & 260'FEL, SEC.21)	LITTLE LADY 21-2CH	LITTLE LADY 21-2CH PWB	LITTLE LADY 21-2CH PWP Rev-A.0	Planned	20.00	30.02	7920.00	13517.44	0.88	13517.44	FAIL
SEC.21-T11N-R64W	SLOT#03 LITTLE LADY 21-1NH (2365'FSL & 260'FEL, SEC.21)	LITTLE LADY 21-1NH	LITTLE LADY 21-1NH PWB	LITTLE LADY 21-1NH PWP Rev-B.0	Planned	20.00	60.01	13517.44	13517.44	1.16	13517.44	PASS
SEC.21-T11N-R64W	SLOT#07 LITTLE LADY 21-5NH (2245'FSL & 260'FEL, SC.21)	LITTLE LADY 21-5NH	LITTLE LADY 21-5NH PWB	LITTLE LADY 21-5NH PWP Rev-A.0	Planned	20.00	60.01	8697.34	13501.74	1.18	13501.74	PASS
SEC.21-T11N-R64W	SLOT#01 LITTLE LADY 22-1NH (405'FSL & 355'FEL, SEC.21)	LITTLE LADY 22-1NH	LITTLE LADY 22-1NH AWP	LITTLE LADY 22-1NH AWP	Drilling	8096.42	213.15	8096.42	8189.10	1.46	8189.10	PASS
SEC.21-T11N-R64W	SLOT#08 LITTLE LADY 21-6CH (2215'FSL & 260'FEL, SC.21)	LITTLE LADY 21-6CH	LITTLE LADY 21-6CH PWB	LITTLE LADY 21-6CH PWP Rev-A.0	Planned	20.00	90.00	8697.34	13512.17	1.86	13512.17	PASS
SEC.21-T11N-R64W	SLOT#09 LITTLE LADY 21-7NH (2185'FSL & 260'FEL, SC.21)	LITTLE LADY 21-7NH	LITTLE LADY 21-7NH PWB	LITTLE LADY 21-7NH PWP Rev-A.0	Planned	20.00	120.01	8697.34	13517.44	2.38	13517.44	PASS
SEC.21-T11N-R64W	SLOT#02 LITTLE LADY 22-2CH (435'FSL & 355'FEL, SEC.21)	LITTLE LADY 22-2CH	LITTLE LADY 22-2CH AWP	LITTLE LADY 22-2CH AWP	Drilling	7998.57	553.42	7998.57	8174.35	3.64	8174.35	PASS
SEC.21-T11N-R64W	SLOT#10 LITTLE LADY 22-3NH (465'FSL & 355'FEL, SC.21)	LITTLE LADY 22-3NH	LITTLE LADY 22-3NH PWB	LITTLE LADY 22-3NH PWP Rev-A.0	Planned	7777.77	636.13	7777.77	7915.45	4.30	7915.45	PASS
SEC.21-T11N-R64W	SLOT#11 LITTLE LADY 22-4CH (495'FSL & 355'FEL, SC.21)	LITTLE LADY 22-4CH	LITTLE LADY 22-4CH PWB	LITTLE LADY 22-4CH PWP Rev-A.0	Planned	7777.75	1038.00	7777.75	7970.73	7.08	7970.73	PASS
SEC.21-T11N-R64W	SLOT#12 LITTLE LADY 22-5NH (525'FSL & 355'FEL, SC.21)	LITTLE LADY 22-5NH	LITTLE LADY 22-5NH PWB	LITTLE LADY 22-5NH PWP Rev-A.0	Planned	7620.00	1213.28	7620.00	7804.61	7.81	7804.61	PASS
SEC.21-T11N-R64W	SLOT#13 LITTLE LADY 22-6CH (555'FSL & 355'FEL, SC.21)	LITTLE LADY 22-6CH	LITTLE LADY 22-6CH PWB	LITTLE LADY 22-6CH PWP Rev-A.0	Planned	7657.63	1608.09	7657.63	7873.85	10.45	7873.85	PASS
SEC.21-T11N-R64W	SLOT#14 LITTLE LADY 22-7NH (585'FSL & 355'FEL, SC.21)	LITTLE LADY 22-7NH	LITTLE LADY 22-7NH PWB	LITTLE LADY 22-7NH PWP Rev-A.0	Planned	20.00	1721.23	7520.00	7759.28	11.48	7759.28	PASS