

Chaco Energy Co. Wellbore Schematic

State #1-16

1980' FNL & 1980' FWL (SE NW)
Sect 16-20S-48W
Kiowa Co, CO
McClave Field

Historical Notes

Drlg/comp:

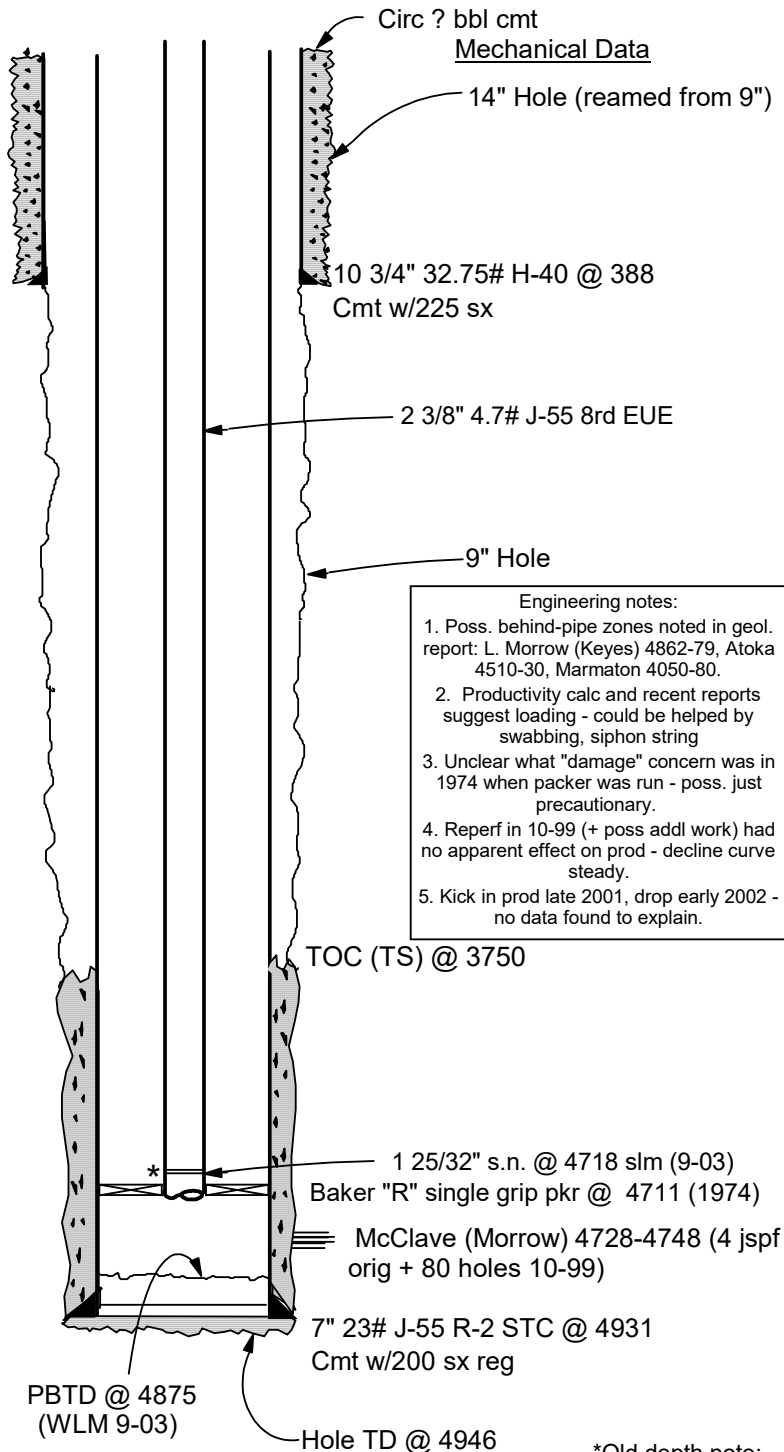
6-11-59 Spud (**Frankfort Oil Co.** - Dallas/Amarillo - oper)
company tools - Rig #3
ff - LC - 200 bbl @ 4058.
6-30-59 TD, csg set, w.o. completion with rig over hole.
7-1-59 (over rotary) Perf McClave and Howco frac w/20,000 gal
diesel (Viso Frac) and 40,000# 20-40 sand + 32 balls, rate=56
bpm, STP 1400-1550 psi. Ran tbg, set @ 4733. Tear down
rotary.
ff - Flow back portion of load, SI for testing.
7-17-59 Well finished - AOF=5450 mcf (test 2488 mcf @ 550
psi). 72 hr SITP=731 psi. S.G.=.731.

Other work, notes:

12-17-62 First sales - 1046 mcf/24 hrs.
7-30-63 Test - 626 mcf @ 518 psi. SITP=663 psi. SICP=548
psi.
4-15-65 Texas Pacific Operator.
6-10-70 BHP run by Wire Line Service Inc.: DW SITP=482 psi,
DW SICP=483 psi, ext. SBHP=551 psi, BHT=140 F. Set down
@ 4737. No fluid found in hole.
4-72 Monthly prod - 8083 mcf (269 mcf ave) per prod. report.
No packer.
9-4-72 Wohlford and Jenkins ran BHP: No pkr, 2" @ 4727,
DWSITP= 395 psi (72 hr si), BHP (extrap) = 454 psi, BHT=130 F.
No fluid in hole.
9-5-72 FBHP run: FBHP= 278 psi, FWHP=197 psi, BHT=139 F.
10-72 Monthly prod - 5111 mcf (165 mcf ave) per prod. report.
No packer.
11-72 Monthly prod - 3922 mcf (196 mcf ave/20 days) per prod.
report.
3-73 Install gas unit and 100 bbl tank
4-74 RU WSU, kill, tag btm, TOH, ran Mod R single grip pkr, w/2
3/8 x 1 25/32" s.n., set pkr @ 4711 "to prevent damage to
formation"
5-76 Test: 91 mcf @ 200 psi.
9-80 Sun operator
5-82 Dwigths printout in file - gas cum 565 mmcf.
7-5-82 1-pt test. SI 280 hrs. SITP=212, SIBHP=245 psi. TD @
4783, EOT@4715 (WLM) BHT=142 F.
1-83 AFE for prod. eq. replacement
11-84 BHP BU run by Tefeller, Inc.: Init rate 78 mcf @ 109#
psi fwbp/164# fbhp. FSIBHP (115 hrs) 224 psi (195 SITP) - still
building. Hit bottom @ 4725 kb, TD w/bar 4793 kb, BHT=146 @
4715.
3-90 Chg oper from PETX to **Anchor Bay**
3-12-96 Attempt to swab - too much pressure, blew well for 2 hrs
press won't drop below 250#. RD, put on line. WJ Luck
consultant, Great Bend.
10-99 File note: reperforated with 80 shots, was making 600
mcf/d/mo, slight increase in prod. Found 850-1000 ft of fluid in
hole. Swabbed?
4-00 Meter report - 675 mcf for mo. (714 hrs) = 22 mcf/d ave.
1-29-02 LT SITP=115 psi
2-03 State audit - \$.30 processing fee denied.
7-03 Chaco operator.
9-03 RU NLS SL unit. 1.888 gr stopped in master valve. Run
1.788 fishing tool as g.r., found s.n. @ 4718 slm, TD @ 4875.
Ran FBHP - 181 psig, FTP=37 psig, FL @ 2682, T=139 deg. F.

State land

KB = 9' AGL
= 3949' ASL



Engineering notes:

1. Poss. behind-pipe zones noted in geol. report: L. Morrow (Keyes) 4862-79, Atoka 4510-30, Marmaton 4050-80.
2. Productivity calc and recent reports suggest loading - could be helped by swabbing, siphon string
3. Unclear what "damage" concern was in 1974 when packer was run - poss. just precautionary.
4. Reperf in 10-99 (+ poss addl work) had no apparent effect on prod - decline curve steady.
5. Kick in prod late 2001, drop early 2002 - no data found to explain.

*Old depth note:
BHP tools tagged up
@ 4725 kb (probable
s.n @ 4710 by tbg
meas), bar TD @
4793 (11-84)

ABN/09-05-03