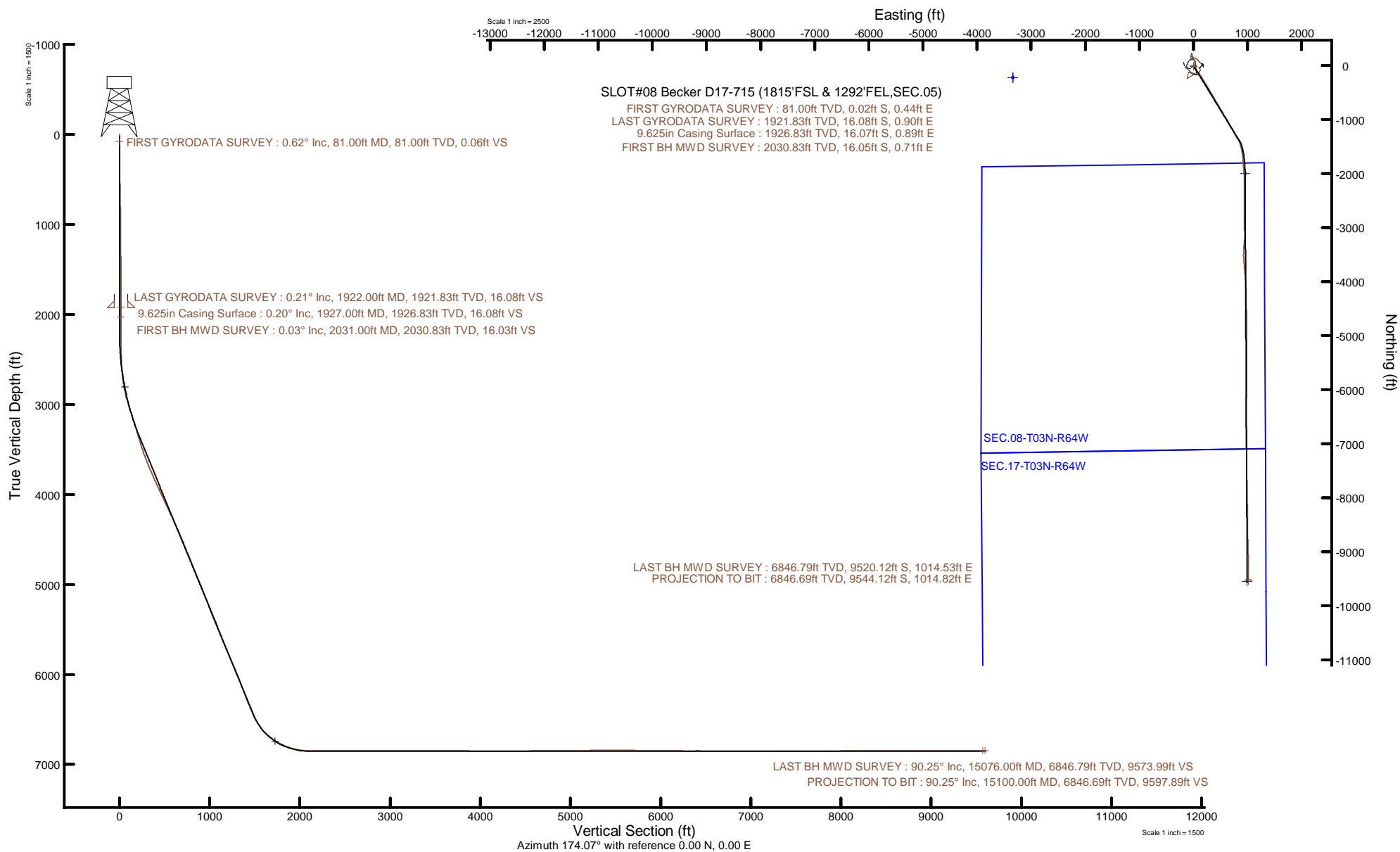


Location:	COLORADO	Slot:	SLOT#08 Becker D17-715 (1815'FSL & 1292'FEL,SEC.05)
Field:	WELD COUNTY (NOBLE NAD 83 GRID)	Well:	Becker D17-715
Facility:	SEC.05-T03N-R64W	Wellbore:	Becker D17-715 PWB
Plot reference wellpath is Becker D17-715 PWP Rev-A.0		Grid System: NAD83 / Lambert Colorado SP, Northern Zone (501), US feet	
True vertical depths are referenced to H&P 517 (30) (RT)		North Reference: Grid north	
Reference wellpath measured depths are referenced to H&P 517 (30) (RT)		Scale: True distance	
H&P 517 (30) (RT) to Mean Sea Level: 4775 feet		Coordinates are in feet referenced to Slot	
Mean Sea Level to Mud line (At Slot: SLOT#08 Becker D17-715 (1815'FSL & 1292'FEL,SEC.05)): 0 feet		Depths are in feet	
Offset wellpath MDs are referenced to each path's default MD datum		Created by: pjinsetr on 2020-10-24; Database: WellArchitectDB	



## REFERENCE WELLPATH IDENTIFICATION

Operator	NOBLE ENERGY, INC	Well	Becker D17-715
Field	WELD COUNTY (NOBLE NAD 83 GRID)	API	0512348855
Facility	SEC.05-T03N-R64W	Wellbore	Becker D17-715 AWB
Slot	SLOT#08 Becker D17-715 (1815'FSL & 1292'FEL,SEC.05)		

## REPORT SETUP INFORMATION

Projection System	NAD83 / Lambert Colorado SP, Northern Zone (501), US feet	Software System	WellArchitect® 6.0
North Reference	Grid	User	Painsetr
Scale	0.999957	Report Generated	10/24/2020 at 1:22:12 PM
Convergence at slot	0.60° East	Database	WellArchitectDB

## WELLPATH LOCATION

	Local coordinates		Grid coordinates		Geographic coordinates	
	North[ft]	East[ft]	Easting[US ft]	Northing[US ft]	Latitude	Longitude
Slot Location	219.57	3340.64	3259561.23	1336072.25	40.2521810°	-104.5700480°
Facility Reference Pt			3256220.74	1335852.69	40.2516739°	-104.5820235°
Field Reference Pt			3000000.00	4454105.15	48.7761986°	-105.5000000°

## WELLPATH DATUM

Calculation method	Minimum curvature	H&P 517 (30') (RT) to Facility Vertical Datum	4775.00ft
Horizontal Reference Pt	Slot	H&P 517 (30') (RT) to Mean Sea Level	4775.00ft
Vertical Reference Pt	H&P 517 (30') (RT)	H&P 517 (30') (RT) to Mud Line at Slot (SLOT#08 Becker D17-715 (1815'FSL & 1292'FEL,SEC.05))	4775.00ft
MD Reference Pt	H&P 517 (30') (RT)	Section Origin	N 0.00, E 0.00 ft
Field Vertical Reference	Mean Sea Level	Section Azimuth	174.07°

REFERENCE WELLPATH IDENTIFICATION			
Operator	NOBLE ENERGY, INC	Well	Becker D17-715
Field	WELD COUNTY (NOBLE NAD 83 GRID)	API	0512348855
Facility	SEC.05-T03N-R64W	Wellbore	Becker D17-715 AWB
Slot	SLOT#08 Becker D17-715 (1815'FSL & 1292'FEL,SEC.05)		

WELLPATH DATA (157 stations)										
MD [ft]	Inclination [°]	Azimuth [°]	TVD [ft]	Vert Sect [ft]	North [ft]	East [ft]	Latitude	Longitude	DLS [°/100ft]	Comments
0.00	0.000	92.260	0.00	0.00	0.00	0.00	40.2521810	-104.5700480	0.00	
81.00	0.620	92.260	81.00	0.06	-0.02	0.44	40.2521809	-104.5700464	0.77	FIRST GYRODATA SURVEY
175.00	0.950	103.130	174.99	0.39	-0.21	1.70	40.2521804	-104.5700419	0.38	
266.00	0.730	96.430	265.98	0.76	-0.45	3.02	40.2521797	-104.5700372	0.26	
361.00	0.450	160.910	360.98	1.25	-0.87	3.74	40.2521785	-104.5700346	0.71	
456.00	1.530	144.450	455.96	2.72	-2.26	4.60	40.2521747	-104.5700316	1.16	
550.00	0.720	164.130	549.94	4.39	-3.84	5.49	40.2521703	-104.5700285	0.94	
645.00	1.240	168.790	644.93	6.00	-5.43	5.85	40.2521659	-104.5700272	0.55	
739.00	1.270	190.100	738.91	8.02	-7.45	5.87	40.2521604	-104.5700273	0.49	
834.00	0.930	193.870	833.89	9.75	-9.24	5.50	40.2521555	-104.5700287	0.37	
929.00	0.580	211.210	928.88	10.86	-10.39	5.06	40.2521523	-104.5700302	0.44	
1023.00	0.720	181.060	1022.87	11.83	-11.39	4.81	40.2521496	-104.5700312	0.39	
1118.00	0.640	176.530	1117.87	12.95	-12.52	4.83	40.2521465	-104.5700312	0.10	
1213.00	0.940	229.580	1212.86	13.92	-13.55	4.27	40.2521437	-104.5700332	0.79	
1307.00	0.530	274.700	1306.85	14.28	-14.02	3.25	40.2521424	-104.5700369	0.72	
1402.00	0.820	202.340	1401.85	14.80	-14.61	2.55	40.2521408	-104.5700394	0.87	
1497.00	0.410	157.900	1496.84	15.72	-15.55	2.42	40.2521382	-104.5700399	0.63	
1591.00	0.310	180.960	1590.84	16.30	-16.12	2.54	40.2521367	-104.5700395	0.19	
1686.00	0.260	210.680	1685.84	16.72	-16.56	2.43	40.2521355	-104.5700399	0.16	
1781.00	0.660	297.610	1780.84	16.60	-16.49	1.83	40.2521357	-104.5700421	0.73	
1875.00	0.320	291.370	1874.83	16.18	-16.15	1.11	40.2521366	-104.5700446	0.37	
1922.00	0.210	286.380	1921.83	16.08	-16.08	0.90	40.2521368	-104.5700454	0.24	LAST GYRODATA SURVEY
2031.00	0.030	194.060	2030.83	16.03	-16.05	0.71	40.2521369	-104.5700461	0.20	FIRST BH MWD SURVEY
2126.00	0.070	355.200	2125.83	16.00	-16.01	0.69	40.2521370	-104.5700461	0.10	
2221.00	0.040	267.190	2220.83	15.94	-15.96	0.66	40.2521372	-104.5700462	0.08	
2315.00	0.260	166.510	2314.83	16.15	-16.17	0.67	40.2521366	-104.5700462	0.29	
2410.00	1.890	151.360	2409.81	17.81	-17.75	1.47	40.2521322	-104.5700434	1.73	
2505.00	2.860	150.620	2504.73	21.43	-21.19	3.39	40.2521227	-104.5700367	1.02	
2599.00	4.250	148.490	2598.55	26.72	-26.20	6.36	40.2521089	-104.5700262	1.49	
2694.00	6.550	146.030	2693.12	34.68	-33.70	11.23	40.2520882	-104.5700090	2.43	

REFERENCE WELLPATH IDENTIFICATION			
Operator	NOBLE ENERGY, INC	Well	Becker D17-715
Field	WELD COUNTY (NOBLE NAD 83 GRID)	API	0512348855
Facility	SEC.05-T03N-R64W	Wellbore	Becker D17-715 AWB
Slot	SLOT#08 Becker D17-715 (1815'FSL & 1292'FEL,SEC.05)		

WELLPATH DATA (157 stations)										
MD [ft]	Inclination [°]	Azimuth [°]	TVD [ft]	Vert Sect [ft]	North [ft]	East [ft]	Latitude	Longitude	DLS [°/100ft]	Comments
2789.00	10.920	141.670	2786.99	47.07	-45.26	19.84	40.2520562	-104.5699786	4.65	
2883.00	15.310	141.860	2878.52	65.09	-62.01	33.03	40.2520098	-104.5699320	4.67	
2978.00	20.340	141.760	2968.93	89.67	-84.86	51.01	40.2519466	-104.5698685	5.29	
3073.00	19.440	141.410	3058.26	116.94	-110.18	71.09	40.2518765	-104.5697975	0.96	
3167.00	20.390	141.070	3146.64	143.84	-135.15	91.14	40.2518074	-104.5697266	1.02	
3262.00	21.350	146.210	3235.41	173.01	-162.40	111.16	40.2517320	-104.5696559	2.18	
3356.00	18.540	145.640	3323.77	201.29	-188.96	129.11	40.2516586	-104.5695926	3.00	
3451.00	18.470	145.460	3413.85	227.78	-213.82	146.17	40.2515899	-104.5695324	0.10	
3545.00	20.200	148.850	3502.55	255.54	-239.98	163.01	40.2515176	-104.5694731	2.19	
3640.00	22.940	148.050	3590.89	287.02	-269.73	181.29	40.2514354	-104.5694087	2.90	
3735.00	24.600	148.520	3677.83	321.50	-302.31	201.41	40.2513454	-104.5693378	1.76	
3829.00	25.140	149.570	3763.11	357.32	-336.21	221.74	40.2512518	-104.5692663	0.74	
3924.00	27.130	149.190	3848.40	395.34	-372.22	243.06	40.2511523	-104.5691913	2.10	
4019.00	27.080	149.690	3932.96	434.68	-409.49	265.07	40.2510494	-104.5691138	0.25	
4114.00	26.830	149.760	4017.64	473.91	-446.68	286.78	40.2509467	-104.5690375	0.27	
4208.00	26.960	149.620	4101.47	512.64	-483.39	308.24	40.2508453	-104.5689620	0.15	
4303.00	26.860	149.600	4186.19	551.78	-520.48	329.99	40.2507429	-104.5688854	0.11	
4398.00	26.950	149.510	4270.90	590.89	-557.54	351.77	40.2506405	-104.5688088	0.10	
4492.00	26.920	149.520	4354.71	629.62	-594.23	373.37	40.2505392	-104.5687328	0.03	
4587.00	25.160	149.460	4440.06	667.55	-630.16	394.55	40.2504400	-104.5686583	1.85	
4682.00	23.940	149.860	4526.47	703.49	-664.22	414.49	40.2503459	-104.5685882	1.30	
4776.00	24.070	149.700	4612.34	738.34	-697.27	433.73	40.2502546	-104.5685204	0.15	
4871.00	24.180	149.750	4699.04	773.72	-730.80	453.31	40.2501620	-104.5684516	0.12	
4966.00	23.730	149.840	4785.86	808.88	-764.14	472.72	40.2500700	-104.5683833	0.48	
5061.00	24.270	149.910	4872.65	844.13	-797.56	492.11	40.2499777	-104.5683151	0.57	
5155.00	24.090	149.880	4958.40	879.25	-830.87	511.42	40.2498857	-104.5682472	0.19	
5250.00	23.680	150.020	5045.26	914.36	-864.16	530.68	40.2497937	-104.5681794	0.44	
5345.00	23.790	149.610	5132.23	949.22	-897.21	549.91	40.2497025	-104.5681118	0.21	
5440.00	22.560	150.000	5219.56	983.30	-929.52	568.71	40.2496132	-104.5680457	1.30	
5534.00	22.060	150.100	5306.52	1015.90	-960.44	586.53	40.2495279	-104.5679830	0.53	

REFERENCE WELLPATH IDENTIFICATION			
Operator	NOBLE ENERGY, INC	Well	Becker D17-715
Field	WELD COUNTY (NOBLE NAD 83 GRID)	API	0512348855
Facility	SEC.05-T03N-R64W	Wellbore	Becker D17-715 AWB
Slot	SLOT#08 Becker D17-715 (1815'FSL & 1292'FEL,SEC.05)		

### WELLPATH DATA (157 stations)

MD [ft]	Inclination [°]	Azimuth [°]	TVD [ft]	Vert Sect [ft]	North [ft]	East [ft]	Latitude	Longitude	DLS [°/100ft]	Comments
5629.00	24.380	149.700	5393.82	1050.06	-992.84	605.32	40.2494384	-104.5679169	2.45	
5724.00	25.300	149.840	5480.03	1086.44	-1027.32	625.41	40.2493432	-104.5678462	0.97	
5818.00	23.640	150.030	5565.59	1121.97	-1061.02	644.92	40.2492501	-104.5677776	1.77	
5913.00	23.940	149.500	5652.51	1156.89	-1094.13	664.21	40.2491587	-104.5677098	0.39	
6008.00	25.310	149.440	5738.87	1192.88	-1128.22	684.32	40.2490645	-104.5676390	1.44	
6198.00	25.130	149.530	5910.76	1266.50	-1197.97	725.43	40.2488719	-104.5674944	0.10	
6292.00	25.000	149.300	5995.91	1302.69	-1232.25	745.69	40.2487772	-104.5674231	0.17	
6387.00	23.420	149.940	6082.55	1338.15	-1265.85	765.40	40.2486844	-104.5673538	1.69	
6481.00	21.690	149.770	6169.36	1371.03	-1297.03	783.50	40.2485983	-104.5672901	1.84	
6576.00	22.440	149.620	6257.40	1403.54	-1327.84	801.51	40.2485132	-104.5672267	0.79	
6670.00	25.540	149.200	6343.27	1438.26	-1360.73	820.97	40.2484224	-104.5671583	3.30	
6765.00	24.490	149.750	6429.36	1474.79	-1395.33	841.37	40.2483268	-104.5670865	1.13	
6859.00	29.720	161.010	6513.06	1515.30	-1434.25	858.79	40.2482195	-104.5670256	7.77	
6954.00	36.800	166.270	6592.46	1566.50	-1484.23	873.23	40.2480819	-104.5669757	8.04	
7049.00	46.230	168.040	6663.52	1628.95	-1545.57	887.12	40.2479131	-104.5669283	10.00	
7143.00	56.620	170.560	6722.06	1702.08	-1617.69	900.63	40.2477148	-104.5668826	11.25	
7238.00	63.350	175.120	6769.57	1784.24	-1699.25	910.77	40.2474906	-104.5668494	8.21	
7333.00	70.310	174.770	6806.93	1871.52	-1786.19	918.46	40.2472517	-104.5668251	7.33	
7427.00	77.400	174.980	6833.05	1961.74	-1876.06	926.52	40.2470048	-104.5667996	7.55	
7522.00	87.410	175.350	6845.59	2055.77	-1969.78	934.44	40.2467474	-104.5667748	10.54	
7617.00	89.880	177.310	6847.84	2150.66	-2064.54	940.52	40.2464871	-104.5667566	3.32	
7712.00	89.750	179.690	6848.14	2245.37	-2159.50	943.01	40.2462264	-104.5667512	2.51	
7806.00	89.780	180.200	6848.53	2338.87	-2253.50	943.10	40.2459683	-104.5667544	0.54	
7901.00	89.970	180.250	6848.73	2433.33	-2348.50	942.73	40.2457076	-104.5667594	0.21	
7996.00	90.250	180.420	6848.55	2527.76	-2443.50	942.17	40.2454469	-104.5667649	0.34	
8090.00	90.180	180.650	6848.20	2621.16	-2537.49	941.29	40.2451889	-104.5667716	0.26	
8184.00	90.220	181.180	6847.87	2714.49	-2631.48	939.79	40.2449310	-104.5667805	0.57	
8279.00	90.580	181.910	6847.21	2808.68	-2726.44	937.23	40.2446704	-104.5667933	0.86	
8374.00	89.320	178.290	6847.29	2903.14	-2821.43	937.06	40.2444097	-104.5667975	4.03	
8468.00	89.690	178.160	6848.10	2996.88	-2915.38	939.98	40.2441517	-104.5667906	0.42	

## REFERENCE WELLPATH IDENTIFICATION

Operator	NOBLE ENERGY, INC	Well	Becker D17-715
Field	WELD COUNTY (NOBLE NAD 83 GRID)	API	0512348855
Facility	SEC.05-T03N-R64W	Wellbore	Becker D17-715 AWB
Slot	SLOT#08 Becker D17-715 (1815'FSL & 1292'FEL,SEC.05)		

## WELLPATH DATA (157 stations)

MD [ft]	Inclination [°]	Azimuth [°]	TVD [ft]	Vert Sect [ft]	North [ft]	East [ft]	Latitude	Longitude	DLS [°/100ft]	Comments
8563.00	89.880	178.500	6848.46	3091.62	-3010.34	942.74	40.2438910	-104.5667842	0.41	
8657.00	89.850	178.550	6848.68	3185.34	-3104.30	945.16	40.2436330	-104.5667791	0.06	
8752.00	89.910	181.980	6848.88	3279.77	-3199.29	944.72	40.2433723	-104.5667843	3.61	
8847.00	90.120	186.110	6848.86	3373.31	-3294.03	938.03	40.2431124	-104.5668118	4.35	
8941.00	90.120	182.290	6848.66	3465.83	-3387.76	931.14	40.2428554	-104.5668400	4.06	
9035.00	90.000	181.910	6848.56	3558.91	-3481.70	927.70	40.2425976	-104.5668559	0.42	
9130.00	89.940	176.080	6848.61	3653.52	-3576.64	929.36	40.2423370	-104.5668535	6.14	
9319.00	89.380	175.540	6849.73	3842.42	-3765.13	943.17	40.2418192	-104.5668112	0.41	
9414.00	89.350	173.710	6850.78	3937.41	-3859.70	952.07	40.2415593	-104.5667829	1.93	
9508.00	90.220	176.110	6851.14	4031.39	-3953.33	960.41	40.2413021	-104.5667565	2.72	
9697.00	90.000	178.710	6850.77	4220.05	-4142.12	968.95	40.2407837	-104.5667331	1.38	
9792.00	89.880	179.040	6850.87	4314.72	-4237.10	970.81	40.2405229	-104.5667300	0.37	
9887.00	90.120	178.930	6850.87	4409.37	-4332.08	972.50	40.2402622	-104.5667275	0.28	
9982.00	90.490	178.760	6850.37	4504.04	-4427.06	974.41	40.2400014	-104.5667242	0.43	
10076.00	89.910	177.800	6850.04	4597.78	-4521.02	977.23	40.2397434	-104.5667177	1.19	
10171.00	90.650	177.990	6849.58	4692.57	-4615.95	980.72	40.2394828	-104.5667087	0.80	
10265.00	91.230	180.080	6848.03	4786.20	-4709.92	982.31	40.2392248	-104.5667066	2.31	
10360.00	91.200	180.180	6846.02	4880.65	-4804.90	982.09	40.2389641	-104.5667110	0.11	
10455.00	88.740	179.400	6846.07	4975.17	-4899.89	982.44	40.2387033	-104.5667133	2.72	
10549.00	89.380	179.160	6847.61	5068.76	-4993.87	983.62	40.2384454	-104.5667126	0.73	
10644.00	91.970	180.950	6846.49	5163.23	-5088.85	983.53	40.2381847	-104.5667165	3.31	
10738.00	91.750	179.000	6843.44	5256.68	-5182.80	983.57	40.2379268	-104.5667199	2.09	
10833.00	90.060	180.930	6841.94	5351.15	-5277.78	983.63	40.2376661	-104.5667233	2.70	
11023.00	89.480	180.290	6842.70	5539.91	-5467.76	981.60	40.2371447	-104.5667377	0.45	
11117.00	89.230	180.200	6843.76	5633.36	-5561.76	981.20	40.2368867	-104.5667427	0.28	
11212.00	88.980	180.460	6845.24	5727.78	-5656.74	980.66	40.2366260	-104.5667482	0.38	
11306.00	88.610	180.170	6847.22	5821.21	-5750.72	980.14	40.2363680	-104.5667536	0.50	
11401.00	90.430	181.000	6848.02	5915.58	-5845.71	979.17	40.2361073	-104.5667607	2.11	
11495.00	89.110	179.920	6848.39	6009.00	-5939.70	978.41	40.2358494	-104.5667669	1.81	
11685.00	89.910	180.760	6850.02	6197.85	-6129.69	977.29	40.2353279	-104.5667781	0.61	

REFERENCE WELLPATH IDENTIFICATION			
Operator	NOBLE ENERGY, INC	Well	Becker D17-715
Field	WELD COUNTY (NOBLE NAD 83 GRID)	API	0512348855
Facility	SEC.05-T03N-R64W	Wellbore	Becker D17-715 AWB
Slot	SLOT#08 Becker D17-715 (1815'FSL & 1292'FEL,SEC.05)		

WELLPATH DATA (157 stations)										
MD [ft]	Inclination [°]	Azimuth [°]	TVD [ft]	Vert Sect [ft]	North [ft]	East [ft]	Latitude	Longitude	DLS [°/100ft]	Comments
11780.00	89.910	180.430	6850.17	6292.23	-6224.68	976.30	40.2350672	-104.5667852	0.35	
11874.00	90.180	180.420	6850.09	6385.66	-6318.68	975.60	40.2348092	-104.5667913	0.29	
11969.00	89.630	180.770	6850.25	6480.04	-6413.67	974.62	40.2345485	-104.5667984	0.69	
12063.00	89.600	180.480	6850.88	6573.42	-6507.66	973.59	40.2342905	-104.5668056	0.31	
12158.00	89.690	180.530	6851.47	6667.82	-6602.66	972.75	40.2340298	-104.5668122	0.11	
12253.00	89.230	180.130	6852.37	6762.25	-6697.65	972.21	40.2337691	-104.5668177	0.64	
12348.00	90.150	179.140	6852.88	6856.80	-6792.65	972.81	40.2335083	-104.5668191	1.42	
12443.00	89.660	178.980	6853.04	6951.44	-6887.63	974.37	40.2332476	-104.5668171	0.54	
12537.00	89.880	180.220	6853.42	7045.00	-6981.63	975.03	40.2329896	-104.5668183	1.34	
12632.00	89.540	178.170	6853.90	7139.61	-7076.61	976.36	40.2327288	-104.5668171	2.19	
12726.00	90.340	180.030	6854.00	7233.25	-7170.60	977.84	40.2324708	-104.5668154	2.15	
12821.00	90.150	179.380	6853.59	7327.79	-7265.59	978.33	40.2322100	-104.5668172	0.71	
12916.00	90.340	179.400	6853.18	7422.38	-7360.59	979.34	40.2319493	-104.5668172	0.20	
13010.00	90.340	179.860	6852.63	7515.93	-7454.58	979.94	40.2316912	-104.5668185	0.49	
13105.00	90.400	178.330	6852.01	7610.56	-7549.57	981.45	40.2314305	-104.5668167	1.61	
13199.00	90.520	177.950	6851.26	7704.32	-7643.51	984.50	40.2311725	-104.5668094	0.42	
13294.00	90.280	178.450	6850.59	7799.07	-7738.46	987.48	40.2309118	-104.5668022	0.58	
13388.00	90.030	179.260	6850.34	7892.74	-7832.44	989.36	40.2306538	-104.5667991	0.90	
13483.00	90.250	179.760	6850.11	7987.32	-7927.44	990.17	40.2303930	-104.5667997	0.58	
13577.00	90.000	178.030	6849.90	8080.98	-8021.42	991.98	40.2301350	-104.5667968	1.86	
13672.00	90.370	179.670	6849.60	8175.65	-8116.40	993.89	40.2298743	-104.5667935	1.77	
13767.00	90.250	179.420	6849.08	8270.21	-8211.39	994.64	40.2296135	-104.5667944	0.29	
13861.00	90.180	179.470	6848.73	8363.80	-8305.39	995.55	40.2293555	-104.5667947	0.09	
13956.00	90.030	178.720	6848.56	8458.43	-8400.37	997.06	40.2290947	-104.5667929	0.81	
14050.00	90.280	178.990	6848.30	8552.10	-8494.35	998.93	40.2288367	-104.5667897	0.39	
14145.00	90.680	179.520	6847.51	8646.71	-8589.34	1000.17	40.2285759	-104.5667889	0.70	
14239.00	90.710	179.490	6846.36	8740.28	-8683.33	1000.98	40.2283179	-104.5667895	0.05	
14334.00	89.780	178.860	6845.96	8834.90	-8778.32	1002.35	40.2280572	-104.5667882	1.18	
14429.00	89.970	179.000	6846.17	8929.56	-8873.30	1004.12	40.2277964	-104.5667854	0.25	
14523.00	90.340	177.270	6845.91	9023.32	-8967.25	1007.18	40.2275384	-104.5667780	1.88	





REFERENCE WELLPATH IDENTIFICATION			
Operator	NOBLE ENERGY, INC	Well	Becker D17-715
Field	WELD COUNTY (NOBLE NAD 83 GRID)	API	0512348855
Facility	SEC.05-T03N-R64W	Wellbore	Becker D17-715 AWB
Slot	SLOT#08 Becker D17-715 (1815'FSL & 1292'FEL,SEC.05)		

WELLPATH COMPOSITION - Ref Wellbore: Becker D17-715 AWB      Ref Wellpath: Becker D17-715 AWP					
Start MD [ft]	End MD [ft]	Positional Uncertainty Model	Log Name/Comment	Wellbore	Survey Date
0.00	1922.00	Gyrodatta 2015 - GC+DROP+COND	Gyrodatta 2015 - GC+DROP+COND 13-1/2" <81 - 1922>	Becker D17-715 AWB	10/23/2020
1922.00	15100.00	OWSG MWD rev2 (MS+IFR1) NOBLE	OWSG MWD Rev2 (MS+IFR1) NOBLE 8-1/2" <2031 - 15076>	Becker D17-715 AWB	10/23/2020

## REFERENCE WELLPATH IDENTIFICATION

Operator	NOBLE ENERGY, INC	Well	Becker D17-715
Field	WELD COUNTY (NOBLE NAD 83 GRID)	API	0512348855
Facility	SEC.05-T03N-R64W	Wellbore	Becker D17-715 AWB
Slot	SLOT#08 Becker D17-715 (1815'FSL & 1292'FEL,SEC.05)		

## WELLPATH COMMENTS

MD [ft]	Inclination [°]	Azimuth [°]	TVD [ft]	Comment
81.00	0.620	92.260	81.00	FIRST GYRODATA SURVEY
1922.00	0.210	286.380	1921.83	LAST GYRODATA SURVEY
2031.00	0.030	194.060	2030.83	FIRST BH MWD SURVEY
15076.00	90.250	179.310	6846.79	LAST BH MWD SURVEY
15100.00	90.250	179.310	6846.69	PROJECTION TO BIT