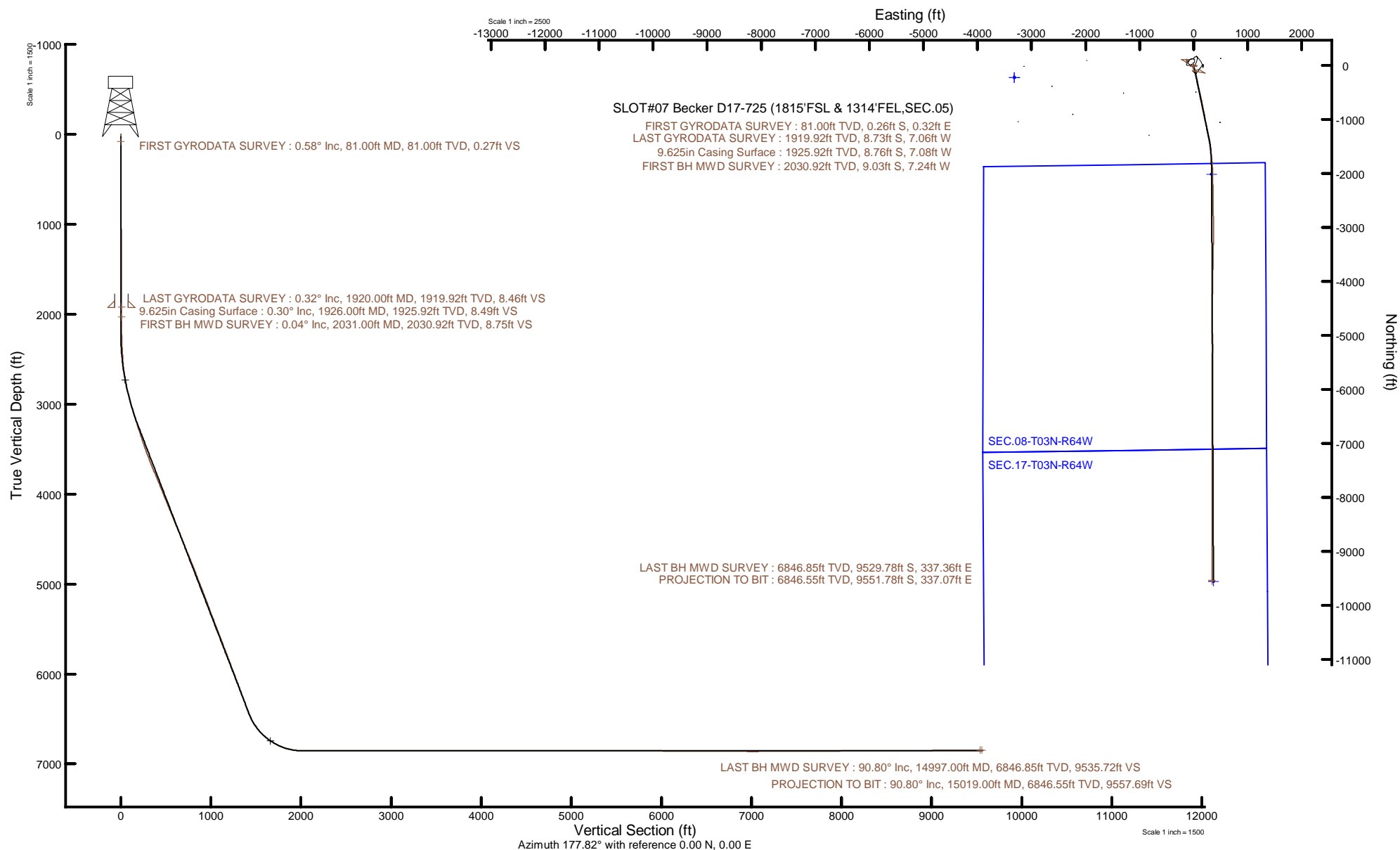


NOBLE ENERGY, INC

Location: COLORADO Slot: SLOT#07 Becker D17-725 (1815'FSL & 1314'FEL,SEC.05)
Field: WELD COUNTY (NOBLE NAD 83 GRID) Well: Becker D17-725
Facility: SEC.05-T03N-R64W Wellbore: Becker D17-725 PWB



Plot reference wellpath is Becker D17-725 PWP Rev-A.0	Grid System: NAD83 / Lambert Colorado SP, Northern Zone (501), US feet
True vertical depths are referenced to H&P 517 (30) (RT)	North Reference: Grid north
Reference wellpath measured depths are referenced to H&P 517 (30) (RT)	Scale: True distance
H&P 517 (30) (RT) to Mean Sea Level: 4775 feet	Coordinates are in feet referenced to Slot
Mean Sea Level to Mud line (At Slot: SLOT#07 Becker D17-725 (1815'FSL & 1314'FEL,SEC.05)): 0 feet	Depths are in feet
Offset wellpath MDs are referenced to each path's default MD datum	Created by: painsetr on 2020-11-01; Database: WellArchitectDB



REFERENCE WELLPATH IDENTIFICATION

Operator	NOBLE ENERGY, INC	Well	Becker D17-725
Field	WELD COUNTY (NOBLE NAD 83 GRID)	API	0512348861
Facility	SEC.05-T03N-R64W	Wellbore	Becker D17-725 AWB
Slot	SLOT#07 Becker D17-725 (1815'FSL & 1314'FEL,SEC.05)		

REPORT SETUP INFORMATION

Projection System	NAD83 / Lambert Colorado SP, Northern Zone (501), US feet	Software System	WellArchitect® 6.0
North Reference	Grid	User	Painsetr
Scale	0.999957	Report Generated	11/1/2020 at 6:50:25 AM
Convergence at slot	0.60° East	Database	WellArchitectDB

WELLPATH LOCATION

	Local coordinates		Grid coordinates		Geographic coordinates	
	North[ft]	East[ft]	Easting[US ft]	Northing[US ft]	Latitude	Longitude
Slot Location	219.33	3318.04	3259538.63	1336072.01	40.2521810°	-104.5701290°
Facility Reference Pt			3256220.74	1335852.69	40.2516739°	-104.5820235°
Field Reference Pt			3000000.00	4454105.15	48.7761986°	-105.5000000°

WELLPATH DATUM

Calculation method	Minimum curvature	H&P 517 (30') (RT) to Facility Vertical Datum	4775.00ft
Horizontal Reference Pt	Slot	H&P 517 (30') (RT) to Mean Sea Level	4775.00ft
Vertical Reference Pt	H&P 517 (30') (RT)	H&P 517 (30') (RT) to Mud Line at Slot (SLOT#07 Becker D17-725 (1815'FSL & 1314'FEL,SEC.05))	4775.00ft
MD Reference Pt	H&P 517 (30') (RT)	Section Origin	N 0.00, E 0.00 ft
Field Vertical Reference	Mean Sea Level	Section Azimuth	177.82°

REFERENCE WELLPATH IDENTIFICATION

Operator	NOBLE ENERGY, INC	Well	Becker D17-725
Field	WELD COUNTY (NOBLE NAD 83 GRID)	API	0512348861
Facility	SEC.05-T03N-R64W	Wellbore	Becker D17-725 AWB
Slot	SLOT#07 Becker D17-725 (1815'FSL & 1314'FEL,SEC.05)		

WELLPATH DATA (159 stations)

MD [ft]	Inclination [°]	Azimuth [°]	TVD [ft]	Vert Sect [ft]	North [ft]	East [ft]	Grid East [US ft]	Grid North [US ft]	Latitude	Longitude	DLS [°/100ft]	Comments
0.00	0.000	128.980	0.00	0.00	0.00	0.00	3259538.63	1336072.01	40.2521810	-104.5701290	0.00	
81.00	0.580	128.980	81.00	0.27	-0.26	0.32	3259538.94	1336071.75	40.2521803	-104.5701279	0.72	FIRST GYRODATA SURVEY
175.00	0.680	123.480	174.99	0.91	-0.86	1.15	3259539.78	1336071.15	40.2521786	-104.5701249	0.12	
266.00	0.460	148.680	265.99	1.54	-1.47	1.79	3259540.42	1336070.54	40.2521769	-104.5701226	0.36	
361.00	0.330	186.340	360.99	2.15	-2.07	1.96	3259540.59	1336069.94	40.2521753	-104.5701220	0.30	
456.00	0.540	279.060	455.98	2.33	-2.27	1.49	3259540.12	1336069.74	40.2521747	-104.5701237	0.68	
550.00	0.300	264.810	549.98	2.26	-2.23	0.81	3259539.43	1336069.79	40.2521749	-104.5701262	0.28	
645.00	0.720	280.470	644.98	2.14	-2.14	-0.03	3259538.60	1336069.87	40.2521751	-104.5701292	0.46	
739.00	0.530	219.920	738.97	2.33	-2.37	-0.89	3259537.74	1336069.65	40.2521745	-104.5701323	0.69	
834.00	0.200	198.780	833.97	2.81	-2.86	-1.22	3259537.40	1336069.15	40.2521732	-104.5701335	0.37	
929.00	0.530	187.940	928.97	3.40	-3.45	-1.34	3259537.29	1336068.56	40.2521716	-104.5701339	0.35	
1023.00	0.720	231.460	1022.96	4.18	-4.25	-1.86	3259536.77	1336067.76	40.2521694	-104.5701358	0.53	
1118.00	0.720	242.280	1117.96	4.79	-4.90	-2.85	3259535.77	1336067.11	40.2521676	-104.5701394	0.14	
1213.00	0.870	215.450	1212.95	5.62	-5.77	-3.80	3259534.82	1336066.25	40.2521653	-104.5701428	0.42	
1307.00	0.330	201.570	1306.94	6.43	-6.60	-4.31	3259534.31	1336065.41	40.2521630	-104.5701447	0.59	
1402.00	1.020	212.520	1401.94	7.38	-7.57	-4.87	3259533.76	1336064.45	40.2521604	-104.5701467	0.74	
1497.00	0.430	201.250	1496.93	8.40	-8.61	-5.45	3259533.17	1336063.40	40.2521575	-104.5701489	0.64	
1591.00	0.380	286.850	1590.93	8.62	-8.85	-5.88	3259532.75	1336063.16	40.2521569	-104.5701504	0.59	
1686.00	0.250	275.360	1685.92	8.49	-8.74	-6.39	3259532.24	1336063.27	40.2521572	-104.5701522	0.15	
1781.00	0.280	311.410	1780.92	8.30	-8.57	-6.77	3259531.86	1336063.45	40.2521577	-104.5701536	0.18	
1875.00	0.180	194.670	1874.92	8.29	-8.56	-6.98	3259531.65	1336063.46	40.2521577	-104.5701543	0.42	
1920.00	0.320	211.090	1919.92	8.46	-8.73	-7.06	3259531.57	1336063.28	40.2521572	-104.5701546	0.35	LAST GYRODATA SURVEY
2031.00	0.040	208.850	2030.92	8.75	-9.03	-7.24	3259531.39	1336062.98	40.2521564	-104.5701553	0.25	FIRST BH MWD SURVEY
2126.00	0.040	50.960	2125.92	8.76	-9.04	-7.23	3259531.40	1336062.97	40.2521564	-104.5701552	0.08	
2221.00	0.920	231.590	2220.92	9.19	-9.49	-7.80	3259530.82	1336062.52	40.2521552	-104.5701573	1.01	
2315.00	3.560	230.700	2314.84	11.40	-11.81	-10.65	3259527.97	1336060.20	40.2521489	-104.5701676	2.81	
2410.00	3.680	183.800	2409.67	16.21	-16.72	-13.14	3259525.49	1336055.29	40.2521355	-104.5701767	3.03	
2505.00	4.250	150.580	2504.45	22.37	-22.83	-11.61	3259527.02	1336049.18	40.2521187	-104.5701714	2.45	
2599.00	7.610	150.400	2597.94	31.00	-31.28	-6.82	3259531.80	1336040.73	40.2520953	-104.5701546	3.57	
2694.00	9.090	150.340	2691.93	43.24	-43.27	0.00	3259538.62	1336028.74	40.2520622	-104.5701306	1.56	

REFERENCE WELLPATH IDENTIFICATION			
Operator	NOBLE ENERGY, INC	Well	Becker D17-725
Field	WELD COUNTY (NOBLE NAD 83 GRID)	API	0512348861
Facility	SEC.05-T03N-R64W	Wellbore	Becker D17-725 AWB
Slot	SLOT#07 Becker D17-725 (1815'FSL & 1314'FEL,SEC.05)		

WELLPATH DATA (159 stations)

MD [ft]	Inclination [°]	Azimuth [°]	TVD [ft]	Vert Sect [ft]	North [ft]	East [ft]	Grid East [US ft]	Grid North [US ft]	Latitude	Longitude	DLS [°/100ft]	Comments
2789.00	12.530	155.140	2785.23	59.41	-59.15	8.05	3259546.67	1336012.87	40.2520184	-104.5701024	3.74	
2884.00	14.680	165.900	2877.57	80.70	-80.18	15.31	3259553.94	1335991.84	40.2519605	-104.5700772	3.49	
2978.00	15.870	164.820	2968.25	104.88	-104.14	21.58	3259560.21	1335967.88	40.2518945	-104.5700556	1.30	
3073.00	17.050	165.960	3059.36	131.17	-130.18	28.36	3259566.99	1335941.83	40.2518229	-104.5700323	1.29	
3167.00	17.550	164.640	3149.10	158.46	-157.22	35.46	3259574.08	1335914.80	40.2517484	-104.5700079	0.68	
3262.00	18.200	165.050	3239.52	186.87	-185.36	43.08	3259581.70	1335886.66	40.2516710	-104.5699816	0.70	
3356.00	18.510	166.320	3328.73	215.81	-214.05	50.40	3259589.02	1335857.98	40.2515920	-104.5699565	0.54	
3451.00	19.150	168.550	3418.65	245.97	-243.97	57.06	3259595.68	1335828.05	40.2515097	-104.5699338	1.01	
3640.00	20.660	168.840	3596.35	309.50	-307.07	69.66	3259608.29	1335764.96	40.2513361	-104.5698910	0.80	
3735.00	22.600	167.810	3684.66	344.03	-341.36	76.76	3259615.38	1335730.67	40.2512418	-104.5698668	2.08	
3829.00	22.730	168.030	3771.40	379.72	-376.78	84.34	3259622.96	1335695.25	40.2511444	-104.5698410	0.17	
3924.00	22.770	167.500	3859.01	415.89	-412.68	92.13	3259630.75	1335659.35	40.2510456	-104.5698145	0.22	
4019.00	22.660	167.690	3946.64	451.99	-448.51	100.01	3259638.63	1335623.53	40.2509471	-104.5697876	0.14	
4114.00	22.690	166.810	4034.30	487.99	-484.23	108.09	3259646.71	1335587.81	40.2508488	-104.5697600	0.36	
4208.00	22.310	167.260	4121.14	523.33	-519.28	116.16	3259654.78	1335552.76	40.2507523	-104.5697324	0.44	
4303.00	22.380	167.990	4209.01	558.88	-554.56	123.90	3259662.52	1335517.48	40.2506553	-104.5697060	0.30	
4398.00	22.630	168.160	4296.78	594.71	-590.14	131.42	3259670.04	1335481.90	40.2505574	-104.5696804	0.27	
4492.00	22.570	168.440	4383.56	630.34	-625.51	138.74	3259677.36	1335446.53	40.2504601	-104.5696555	0.13	
4587.00	22.340	168.230	4471.36	666.13	-661.04	146.08	3259684.70	1335411.00	40.2503623	-104.5696305	0.26	
4682.00	22.690	169.210	4559.11	702.05	-696.72	153.19	3259691.81	1335375.32	40.2502642	-104.5696064	0.54	
4776.00	22.530	168.480	4645.89	737.75	-732.17	160.18	3259698.80	1335339.87	40.2501667	-104.5695827	0.34	
4871.00	22.520	168.660	4733.64	773.67	-767.85	167.39	3259706.01	1335304.20	40.2500686	-104.5695582	0.07	
4966.00	21.390	169.070	4821.75	808.75	-802.69	174.26	3259712.87	1335269.35	40.2499727	-104.5695349	1.20	
5061.00	21.810	167.930	4910.08	843.26	-836.96	181.23	3259719.85	1335235.09	40.2498785	-104.5695112	0.62	
5155.00	21.400	168.810	4997.48	877.40	-870.86	188.21	3259726.83	1335201.19	40.2497852	-104.5694875	0.56	
5250.00	21.520	170.030	5085.89	911.78	-905.02	194.59	3259733.21	1335167.03	40.2496913	-104.5694659	0.49	
5345.00	20.880	170.920	5174.46	945.85	-938.90	200.28	3259738.90	1335133.15	40.2495981	-104.5694468	0.75	
5440.00	20.040	173.350	5263.47	978.89	-971.79	204.84	3259743.45	1335100.27	40.2495077	-104.5694317	1.26	
5534.00	21.120	168.760	5351.48	1011.67	-1004.40	210.00	3259748.62	1335067.66	40.2494181	-104.5694145	2.06	
5629.00	21.070	168.920	5440.11	1045.45	-1037.95	216.62	3259755.24	1335034.11	40.2493258	-104.5693920	0.08	

REFERENCE WELLPATH IDENTIFICATION			
Operator	NOBLE ENERGY, INC	Well	Becker D17-725
Field	WELD COUNTY (NOBLE NAD 83 GRID)	API	0512348861
Facility	SEC.05-T03N-R64W	Wellbore	Becker D17-725 AWB
Slot	SLOT#07 Becker D17-725 (1815'FSL & 1314'FEL,SEC.05)		

WELLPATH DATA (159 stations)

MD [ft]	Inclination [°]	Azimuth [°]	TVD [ft]	Vert Sect [ft]	North [ft]	East [ft]	Grid East [US ft]	Grid North [US ft]	Latitude	Longitude	DLS [°/100ft]	Comments
5724.00	21.280	168.430	5528.69	1079.33	-1071.59	223.36	3259761.98	1335000.47	40.2492332	-104.5693691	0.29	
5818.00	21.200	168.780	5616.31	1112.94	-1104.98	230.09	3259768.70	1334967.09	40.2491414	-104.5693463	0.16	
5913.00	21.400	168.680	5704.82	1147.02	-1138.82	236.83	3259775.45	1334933.24	40.2490483	-104.5693234	0.21	
6008.00	20.860	169.140	5793.43	1180.85	-1172.43	243.42	3259782.04	1334899.64	40.2489559	-104.5693011	0.59	
6103.00	20.480	168.950	5882.32	1213.99	-1205.35	249.79	3259788.41	1334866.72	40.2488653	-104.5692795	0.41	
6198.00	21.240	168.900	5971.09	1247.41	-1238.55	256.29	3259794.91	1334833.52	40.2487740	-104.5692574	0.80	
6292.00	20.900	168.710	6058.80	1280.79	-1271.70	262.85	3259801.47	1334800.37	40.2486829	-104.5692352	0.37	
6387.00	20.640	169.320	6147.63	1314.08	-1304.77	269.27	3259807.89	1334767.30	40.2485919	-104.5692134	0.36	
6481.00	19.650	169.580	6235.88	1346.11	-1336.59	275.20	3259813.82	1334735.48	40.2485044	-104.5691934	1.06	
6576.00	19.930	169.100	6325.27	1377.92	-1368.20	281.15	3259819.77	1334703.87	40.2484174	-104.5691733	0.34	
6670.00	21.320	168.760	6413.24	1410.63	-1400.70	287.51	3259826.13	1334671.38	40.2483281	-104.5691517	1.48	
6765.00	26.100	169.270	6500.20	1448.38	-1438.19	294.77	3259833.39	1334633.89	40.2482249	-104.5691271	5.04	
6859.00	35.130	173.520	6581.02	1495.90	-1485.48	301.69	3259840.30	1334586.60	40.2480949	-104.5691041	9.87	
6954.00	43.520	174.070	6654.44	1555.90	-1545.28	308.17	3259846.78	1334526.80	40.2479306	-104.5690832	8.84	
7049.00	51.220	172.510	6718.74	1625.52	-1614.63	316.39	3259855.00	1334457.45	40.2477400	-104.5690563	8.19	
7143.00	60.560	172.300	6771.39	1702.91	-1691.69	326.67	3259865.28	1334380.40	40.2475282	-104.5690224	9.94	
7238.00	69.260	173.620	6811.64	1788.56	-1777.00	337.17	3259875.78	1334295.09	40.2472937	-104.5689880	9.24	
7333.00	77.720	177.350	6838.62	1879.47	-1867.70	344.27	3259882.88	1334204.39	40.2470446	-104.5689660	9.67	
7427.00	86.460	179.580	6851.55	1972.47	-1960.68	346.74	3259885.35	1334111.42	40.2467893	-104.5689606	9.59	
7522.00	90.120	178.230	6854.38	2067.39	-2055.60	348.55	3259887.16	1334016.50	40.2465287	-104.5689577	4.11	
7617.00	90.370	178.410	6853.97	2162.39	-2150.56	351.34	3259889.95	1333921.55	40.2462680	-104.5689513	0.32	
7712.00	90.090	177.510	6853.59	2257.38	-2245.50	354.72	3259893.33	1333826.62	40.2460073	-104.5689427	0.99	
7806.00	90.620	178.520	6853.01	2351.38	-2339.44	357.98	3259896.59	1333732.68	40.2457494	-104.5689346	1.21	
7901.00	90.060	179.620	6852.45	2446.35	-2434.42	359.52	3259898.13	1333637.70	40.2454886	-104.5689326	1.30	
7996.00	90.120	179.500	6852.30	2541.31	-2529.42	360.25	3259898.86	1333542.71	40.2452278	-104.5689336	0.14	
8090.00	90.030	179.890	6852.17	2635.26	-2623.42	360.75	3259899.36	1333448.71	40.2449698	-104.5689354	0.43	
8279.00	90.400	179.460	6851.47	2824.16	-2812.41	361.82	3259900.43	1333259.73	40.2444510	-104.5689386	0.30	
8374.00	89.820	179.790	6851.28	2919.11	-2907.41	362.44	3259901.05	1333164.73	40.2441902	-104.5689400	0.70	
8468.00	89.820	179.280	6851.58	3013.07	-3001.41	363.20	3259901.81	1333070.74	40.2439322	-104.5689408	0.54	
8563.00	89.880	179.770	6851.83	3108.02	-3096.40	363.99	3259902.60	1332975.75	40.2436715	-104.5689415	0.52	

REFERENCE WELLPATH IDENTIFICATION			
Operator	NOBLE ENERGY, INC	Well	Becker D17-725
Field	WELD COUNTY (NOBLE NAD 83 GRID)	API	0512348861
Facility	SEC.05-T03N-R64W	Wellbore	Becker D17-725 AWB
Slot	SLOT#07 Becker D17-725 (1815'FSL & 1314'FEL,SEC.05)		

WELLPATH DATA (159 stations)												
MD [ft]	Inclination [°]	Azimuth [°]	TVD [ft]	Vert Sect [ft]	North [ft]	East [ft]	Grid East [US ft]	Grid North [US ft]	Latitude	Longitude	DLS [°/100ft]	Comments
8658.00	89.720	180.520	6852.16	3202.94	-3191.40	363.75	3259902.36	1332880.76	40.2434107	-104.5689460	0.81	
8752.00	90.060	181.150	6852.34	3296.81	-3285.39	362.38	3259900.99	1332786.77	40.2431528	-104.5689544	0.76	
8847.00	89.910	181.210	6852.36	3391.65	-3380.37	360.43	3259899.03	1332691.80	40.2428921	-104.5689650	0.17	
8941.00	89.750	180.840	6852.64	3485.50	-3474.35	358.74	3259897.35	1332597.82	40.2426342	-104.5689745	0.43	
9035.00	89.880	180.800	6852.95	3579.37	-3568.34	357.40	3259896.01	1332503.83	40.2423762	-104.5689829	0.14	
9130.00	90.000	181.250	6853.05	3674.22	-3663.33	355.70	3259894.31	1332408.85	40.2421156	-104.5689925	0.49	
9224.00	89.910	181.290	6853.12	3768.05	-3757.30	353.62	3259892.23	1332314.88	40.2418577	-104.5690035	0.10	
9319.00	89.540	180.450	6853.58	3862.91	-3852.29	352.17	3259890.78	1332219.90	40.2415970	-104.5690123	0.97	
9414.00	89.850	180.840	6854.08	3957.80	-3947.28	351.10	3259889.71	1332124.91	40.2413363	-104.5690197	0.52	
9508.00	89.880	181.440	6854.30	4051.64	-4041.26	349.23	3259887.84	1332030.93	40.2410784	-104.5690299	0.64	
9603.00	90.180	181.420	6854.25	4146.45	-4136.23	346.86	3259885.47	1331935.96	40.2408178	-104.5690420	0.32	
9697.00	90.030	180.940	6854.08	4240.29	-4230.21	344.93	3259883.54	1331841.99	40.2405599	-104.5690524	0.53	
9792.00	90.030	181.830	6854.03	4335.10	-4325.19	342.63	3259881.24	1331747.02	40.2402993	-104.5690642	0.94	
9887.00	90.370	180.890	6853.70	4429.92	-4420.16	340.38	3259878.99	1331652.06	40.2400387	-104.5690759	1.05	
9982.00	89.720	180.180	6853.62	4524.81	-4515.15	339.49	3259878.10	1331557.06	40.2397779	-104.5690826	1.01	
10076.00	90.150	179.640	6853.73	4618.75	-4609.15	339.64	3259878.25	1331463.07	40.2395199	-104.5690856	0.73	
10171.00	90.550	178.530	6853.15	4713.72	-4704.14	341.15	3259879.76	1331368.09	40.2392592	-104.5690838	1.24	
10266.00	90.490	179.540	6852.29	4808.69	-4799.12	342.75	3259881.36	1331273.11	40.2389984	-104.5690816	1.06	
10360.00	89.720	179.420	6852.12	4902.65	-4893.11	343.61	3259882.22	1331179.12	40.2387404	-104.5690821	0.83	
10455.00	90.150	178.450	6852.22	4997.63	-4988.09	345.37	3259883.98	1331084.14	40.2384796	-104.5690794	1.12	
10549.00	90.620	180.100	6851.59	5091.60	-5082.08	346.56	3259885.17	1330990.16	40.2382216	-104.5690786	1.83	
10644.00	89.880	180.360	6851.18	5186.51	-5177.08	346.18	3259884.79	1330895.17	40.2379609	-104.5690836	0.83	
10738.00	90.120	180.660	6851.18	5280.41	-5271.07	345.34	3259883.95	1330801.18	40.2377029	-104.5690901	0.41	
10833.00	90.310	180.220	6850.82	5375.31	-5366.07	344.61	3259883.22	1330706.18	40.2374422	-104.5690963	0.50	
10928.00	89.600	180.110	6850.90	5470.23	-5461.07	344.34	3259882.95	1330611.19	40.2371814	-104.5691008	0.76	
11023.00	90.830	180.970	6850.54	5565.11	-5556.06	343.45	3259882.06	1330516.20	40.2369207	-104.5691076	1.58	
11117.00	89.320	180.750	6850.42	5658.98	-5650.05	342.03	3259880.64	1330422.22	40.2366628	-104.5691162	1.62	
11212.00	89.350	180.620	6851.52	5753.85	-5745.04	340.90	3259879.51	1330327.24	40.2364021	-104.5691238	0.14	
11306.00	89.200	179.280	6852.71	5847.78	-5839.03	340.98	3259879.59	1330233.25	40.2361441	-104.5691271	1.43	
11401.00	89.080	180.050	6854.13	5942.72	-5934.01	341.54	3259880.15	1330138.27	40.2358834	-104.5691287	0.82	

REFERENCE WELLPATH IDENTIFICATION			
Operator	NOBLE ENERGY, INC	Well	Becker D17-725
Field	WELD COUNTY (NOBLE NAD 83 GRID)	API	0512348861
Facility	SEC.05-T03N-R64W	Wellbore	Becker D17-725 AWB
Slot	SLOT#07 Becker D17-725 (1815'FSL & 1314'FEL,SEC.05)		

WELLPATH DATA (159 stations)

MD [ft]	Inclination [°]	Azimuth [°]	TVD [ft]	Vert Sect [ft]	North [ft]	East [ft]	Grid East [US ft]	Grid North [US ft]	Latitude	Longitude	DLS [°/100ft]	Comments
11495.00	89.200	179.750	6855.55	6036.64	-6028.00	341.70	3259880.31	1330044.28	40.2356254	-104.5691316	0.34	
11590.00	89.350	179.420	6856.75	6131.59	-6122.99	342.39	3259881.00	1329949.30	40.2353646	-104.5691327	0.38	
11685.00	89.660	180.200	6857.57	6226.53	-6217.99	342.70	3259881.31	1329854.31	40.2351039	-104.5691352	0.88	
11780.00	89.630	180.050	6858.16	6321.45	-6312.98	342.50	3259881.11	1329759.31	40.2348431	-104.5691395	0.16	
11874.00	90.000	180.720	6858.46	6415.36	-6406.98	341.86	3259880.47	1329665.32	40.2345851	-104.5691453	0.81	
11969.00	90.180	180.240	6858.31	6510.25	-6501.98	341.07	3259879.68	1329570.33	40.2343244	-104.5691517	0.54	
12063.00	89.850	180.130	6858.29	6604.17	-6595.98	340.77	3259879.38	1329476.33	40.2340664	-104.5691563	0.37	
12158.00	89.850	179.960	6858.54	6699.10	-6690.98	340.69	3259879.30	1329381.34	40.2338056	-104.5691601	0.18	
12253.00	89.480	179.750	6859.09	6794.04	-6785.97	340.93	3259879.54	1329286.34	40.2335449	-104.5691629	0.45	
12348.00	89.690	179.620	6859.78	6888.98	-6880.97	341.45	3259880.06	1329191.35	40.2332841	-104.5691646	0.26	
12443.00	89.720	179.860	6860.27	6983.93	-6975.97	341.88	3259880.49	1329096.36	40.2330234	-104.5691666	0.25	
12537.00	90.490	179.630	6860.10	7077.88	-7069.97	342.30	3259880.91	1329002.37	40.2327653	-104.5691686	0.85	
12632.00	90.150	179.990	6859.57	7172.82	-7164.96	342.62	3259881.23	1328907.37	40.2325046	-104.5691711	0.52	
12726.00	90.340	181.960	6859.16	7266.67	-7258.94	341.02	3259879.63	1328813.40	40.2322467	-104.5691803	2.11	
12821.00	90.430	180.770	6858.52	7361.48	-7353.91	338.76	3259877.37	1328718.43	40.2319861	-104.5691920	1.26	
12916.00	90.220	179.860	6857.99	7456.39	-7448.91	338.23	3259876.84	1328623.44	40.2317253	-104.5691974	0.98	
13010.00	90.520	180.330	6857.38	7550.31	-7542.91	338.08	3259876.69	1328529.45	40.2314673	-104.5692015	0.59	
13105.00	89.970	180.320	6856.97	7645.22	-7637.90	337.54	3259876.15	1328434.45	40.2312066	-104.5692070	0.58	
13199.00	90.950	179.390	6856.22	7739.15	-7731.90	337.78	3259876.39	1328340.46	40.2309486	-104.5692097	1.44	
13294.00	90.000	179.350	6855.43	7834.12	-7826.89	338.82	3259877.43	1328245.48	40.2306878	-104.5692095	1.00	
13388.00	90.120	178.480	6855.33	7928.10	-7920.87	340.60	3259879.21	1328151.50	40.2304298	-104.5692067	0.93	
13483.00	90.370	179.620	6854.93	8023.07	-8015.86	342.18	3259880.79	1328056.52	40.2301690	-104.5692046	1.23	
13578.00	90.370	179.370	6854.31	8118.03	-8110.85	343.01	3259881.62	1327961.53	40.2299083	-104.5692052	0.26	
13672.00	90.180	179.810	6853.86	8211.98	-8204.85	343.69	3259882.30	1327867.54	40.2296502	-104.5692063	0.51	
13767.00	89.940	180.690	6853.76	8306.90	-8299.84	343.27	3259881.88	1327772.54	40.2293895	-104.5692114	0.96	
13861.00	90.310	179.750	6853.56	8400.81	-8393.84	342.91	3259881.52	1327678.55	40.2291315	-104.5692162	1.07	
13956.00	90.520	180.440	6852.87	8495.73	-8488.84	342.75	3259881.36	1327583.56	40.2288708	-104.5692203	0.76	
14050.00	90.580	179.980	6851.97	8589.65	-8582.83	342.41	3259881.02	1327489.57	40.2286128	-104.5692251	0.49	
14145.00	90.770	180.000	6850.85	8684.57	-8677.83	342.42	3259881.03	1327394.58	40.2283520	-104.5692286	0.20	
14239.00	89.690	180.280	6850.47	8778.49	-8771.82	342.20	3259880.80	1327300.58	40.2280940	-104.5692330	1.19	

REFERENCE WELLPATH IDENTIFICATION			
Operator	NOBLE ENERGY, INC	Well	Becker D17-725
Field	WELD COUNTY (NOBLE NAD 83 GRID)	API	0512348861
Facility	SEC.05-T03N-R64W	Wellbore	Becker D17-725 AWB
Slot	SLOT#07 Becker D17-725 (1815'FSL & 1314'FEL,SEC.05)		

WELLPATH DATA (159 stations) † = interpolated, ‡ = extrapolated station												
MD [ft]	Inclination [°]	Azimuth [°]	TVD [ft]	Vert Sect [ft]	North [ft]	East [ft]	Grid East [US ft]	Grid North [US ft]	Latitude	Longitude	DLS [°/100ft]	Comments
14334.00	90.310	180.300	6850.47	8873.40	-8866.82	341.71	3259880.32	1327205.59	40.2278333	-104.5692383	0.65	
14429.00	90.090	180.560	6850.14	8968.30	-8961.82	341.00	3259879.61	1327110.60	40.2275726	-104.5692444	0.36	
14523.00	90.030	179.540	6850.04	9062.23	-9055.82	340.92	3259879.53	1327016.60	40.2273146	-104.5692482	1.09	
14618.00	90.280	180.990	6849.78	9157.14	-9150.81	340.48	3259879.09	1326921.61	40.2270538	-104.5692534	1.55	
14713.00	90.340	180.350	6849.27	9252.02	-9245.81	339.37	3259877.98	1326826.62	40.2267931	-104.5692609	0.68	
14807.00	90.310	180.760	6848.74	9345.91	-9339.80	338.46	3259877.07	1326732.63	40.2265351	-104.5692677	0.44	
14902.00	90.580	179.910	6848.00	9440.82	-9434.79	337.90	3259876.51	1326637.64	40.2262744	-104.5692733	0.94	
14997.00	90.800	180.750	6846.85	9535.72	-9529.78	337.36	3259875.97	1326542.66	40.2260137	-104.5692788	0.91	LAST BH MWD SURVEY
15019.00‡	90.800	180.750	6846.55	9557.69	-9551.78	337.07	3259875.68	1326520.66	40.2259533	-104.5692807	0.00	PROJECTION TO BIT

HOLE & CASING SECTIONS - Ref Wellbore: Becker D17-725 AWB Ref Wellpath: Becker D17-725 AWP									
String/Diameter	Start MD [ft]	End MD [ft]	Interval [ft]	Start TVD [ft]	End TVD [ft]	Start N/S [ft]	Start E/W [ft]	End N/S [ft]	End E/W [ft]
9.625in Casing Surface	30.00	1926.00	1896.00	30.00	1925.92	-0.04	0.04	-8.76	-7.08

REFERENCE WELLPATH IDENTIFICATION			
Operator	NOBLE ENERGY, INC	Well	Becker D17-725
Field	WELD COUNTY (NOBLE NAD 83 GRID)	API	0512348861
Facility	SEC.05-T03N-R64W	Wellbore	Becker D17-725 AWB
Slot	SLOT#07 Becker D17-725 (1815'FSL & 1314'FEL,SEC.05)		

TARGETS								
Name	TVD [ft]	North [ft]	East [ft]	Grid East [US ft]	Grid North [US ft]	Latitude	Longitude	Shape
SEC.08-T03N-R64W	-26.00	-219.29	-3318.16	3256220.61	1335852.74	40.2516740	-104.5820240	polygon
2D Polygon: dimensions not calculated								
SEC.17-T03N-R64W	-26.00	-219.29	-3318.16	3256220.61	1335852.74	40.2516740	-104.5820240	polygon
2D Polygon: dimensions not calculated								
Becker D17-725 BHL REV-1 (2450'FNL & 1000'FEL,SEC.17)	6855.00	-9555.80	364.41	3259903.02	1326516.64	40.2259415	-104.5691829	point
Becker D17-725 TPZ REV-1(200'FNL & 995'FEL,SEC.08)	6855.00	-2010.58	330.99	3259869.60	1334061.53	40.2466528	-104.5690189	point

WELLPATH COMPOSITION - Ref Wellbore: Becker D17-725 AWB						Ref Wellpath: Becker D17-725 AWP	
Start MD [ft]	End MD [ft]	Positional Uncertainty Model	Log Name/Comment		Wellbore	Survey Date	
0.00	1920.00	Gyrodatta 2015 - GC+DROP+COND	Gyrodatta 2015 - GC+DROP+COND 13-1/2" <81 - 1920>		Becker D17-725 AWB	10/25/2020	
1920.00	15019.00	OWSG MWD rev2 (MS+IFR1) NOBLE	OWSG MWD Rev2 (MS+IFR1) NOBLE 8-1/2" <2031 - 14997>		Becker D17-725 AWB	10/25/2020	

REFERENCE WELLPATH IDENTIFICATION

Operator	NOBLE ENERGY, INC	Well	Becker D17-725
Field	WELD COUNTY (NOBLE NAD 83 GRID)	API	0512348861
Facility	SEC.05-T03N-R64W	Wellbore	Becker D17-725 AWB
Slot	SLOT#07 Becker D17-725 (1815'FSL & 1314'FEL,SEC.05)		

WELLPATH COMMENTS

MD [ft]	Inclination [°]	Azimuth [°]	TVD [ft]	Comment
81.00	0.580	128.980	81.00	FIRST GYRODATA SURVEY
1920.00	0.320	211.090	1919.92	LAST GYRODATA SURVEY
2031.00	0.040	208.850	2030.92	FIRST BH MWD SURVEY
14997.00	90.800	180.750	6846.85	LAST BH MWD SURVEY
15019.00	90.800	180.750	6846.55	PROJECTION TO BIT