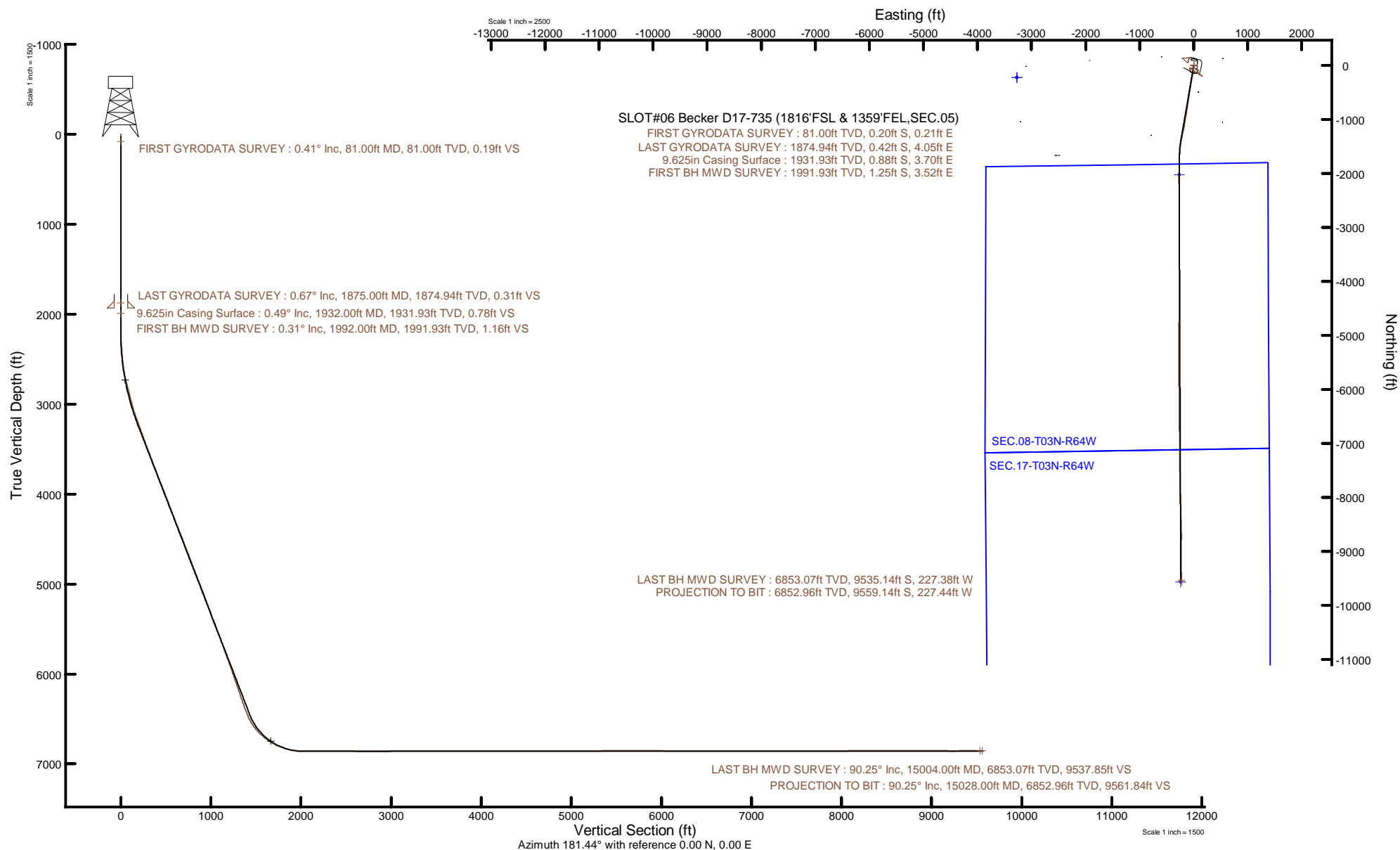


NOBLE ENERGY, INC

Location: COLORADO Slot: SLOT#06 Becker D17-735 (1816'FSL & 1359'FEL,SEC.05)
Field: WELD COUNTY (NOBLE NAD 83 GRID) Well: Becker D17-735
Facility: SEC.05-T03N-R64W Wellbore: Becker D17-735 PWB



Plot reference wellpath is Becker D17-735 PWP Rev-A.0	Grid System: NAD83 / Lambert Colorado SP, Northern Zone (501), US feet
True vertical depths are referenced to H&P 517 (30) (RT)	North Reference: Grid north
Reference wellpath measured depths are referenced to H&P 517 (30) (RT)	Scale: True distance
H&P 517 (30) (RT) to Mean Sea Level: 4777 feet	Coordinates are in feet referenced to Slot
Mean Sea Level to Mud line (At Slot: SLOT#06 Becker D17-735 (1816'FSL & 1359'FEL,SEC.05)): 0 feet	Depths are in feet
Offset wellpath MDs are referenced to each path's default MD datum	Created by: painsetr on 2020-11-01; Database: WellArchitectDB



REFERENCE WELLPATH IDENTIFICATION

Operator	NOBLE ENERGY, INC	Well	Becker D17-735
Field	WELD COUNTY (NOBLE NAD 83 GRID)	API	0512348856
Facility	SEC.05-T03N-R64W	Wellbore	Becker D17-735 AWB
Slot	SLOT#06 Becker D17-735 (1816'FSL & 1359'FEL,SEC.05)		

REPORT SETUP INFORMATION

Projection System	NAD83 / Lambert Colorado SP, Northern Zone (501), US feet	Software System	WellArchitect® 6.0
North Reference	Grid	User	Painsetr
Scale	0.999957	Report Generated	11/1/2020 at 7:19:15 AM
Convergence at slot	0.60° East	Database	WellArchitectDB

WELLPATH LOCATION

	Local coordinates		Grid coordinates		Geographic coordinates	
	North[ft]	East[ft]	Easting[US ft]	Northing[US ft]	Latitude	Longitude
Slot Location	219.59	3273.09	3259493.68	1336072.27	40.2521830°	-104.5702900°
Facility Reference Pt			3256220.74	1335852.69	40.2516739°	-104.5820235°
Field Reference Pt			3000000.00	4454105.15	48.7761986°	-105.5000000°

WELLPATH DATUM

Calculation method	Minimum curvature	H&P 517 (30') (RT) to Facility Vertical Datum	4777.00ft
Horizontal Reference Pt	Slot	H&P 517 (30') (RT) to Mean Sea Level	4777.00ft
Vertical Reference Pt	H&P 517 (30') (RT)	H&P 517 (30') (RT) to Mud Line at Slot (SLOT#06 Becker D17-735 (1816'FSL & 1359'FEL,SEC.05))	4777.00ft
MD Reference Pt	H&P 517 (30') (RT)	Section Origin	N 0.00, E 0.00 ft
Field Vertical Reference	Mean Sea Level	Section Azimuth	181.44°

REFERENCE WELLPATH IDENTIFICATION

Operator	NOBLE ENERGY, INC	Well	Becker D17-735
Field	WELD COUNTY (NOBLE NAD 83 GRID)	API	0512348856
Facility	SEC.05-T03N-R64W	Wellbore	Becker D17-735 AWB
Slot	SLOT#06 Becker D17-735 (1816'FSL & 1359'FEL,SEC.05)		

WELLPATH DATA (156 stations)

MD [ft]	Inclination [°]	Azimuth [°]	TVD [ft]	Vert Sect [ft]	North [ft]	East [ft]	Grid East [US ft]	Grid North [US ft]	Latitude	Longitude	DLS [°/100ft]	Comments
0.00	0.000	132.850	0.00	0.00	0.00	0.00	3259493.68	1336072.27	40.2521830	-104.5702900	0.00	
81.00	0.410	132.850	81.00	0.19	-0.20	0.21	3259493.89	1336072.07	40.2521825	-104.5702892	0.51	FIRST GYRODATA SURVEY
175.00	0.460	86.950	175.00	0.38	-0.41	0.84	3259494.52	1336071.86	40.2521819	-104.5702870	0.36	
266.00	0.290	107.960	265.99	0.42	-0.46	1.42	3259495.10	1336071.81	40.2521817	-104.5702849	0.24	
361.00	0.060	100.580	360.99	0.50	-0.54	1.70	3259495.38	1336071.73	40.2521815	-104.5702839	0.24	
456.00	0.310	151.100	455.99	0.73	-0.77	1.87	3259495.55	1336071.50	40.2521808	-104.5702833	0.29	
550.00	0.220	324.300	549.99	0.80	-0.85	1.89	3259495.57	1336071.42	40.2521806	-104.5702833	0.56	
645.00	0.370	85.950	644.99	0.63	-0.68	2.09	3259495.77	1336071.59	40.2521811	-104.5702825	0.55	
739.00	0.450	70.690	738.99	0.47	-0.54	2.74	3259496.42	1336071.73	40.2521814	-104.5702802	0.14	
834.00	0.600	109.170	833.99	0.49	-0.58	3.56	3259497.24	1336071.69	40.2521813	-104.5702773	0.39	
929.00	0.930	116.400	928.98	0.96	-1.08	4.72	3259498.40	1336071.19	40.2521799	-104.5702731	0.36	
1023.00	0.540	109.480	1022.97	1.42	-1.57	5.82	3259499.50	1336070.70	40.2521785	-104.5702692	0.42	
1118.00	0.540	70.350	1117.97	1.40	-1.57	6.67	3259500.35	1336070.70	40.2521785	-104.5702662	0.38	
1213.00	0.440	55.120	1212.96	1.02	-1.21	7.39	3259501.07	1336071.06	40.2521795	-104.5702636	0.17	
1307.00	0.520	182.780	1306.96	1.24	-1.43	7.66	3259501.34	1336070.84	40.2521789	-104.5702626	0.92	
1402.00	0.310	311.260	1401.96	1.50	-1.69	7.45	3259501.13	1336070.58	40.2521781	-104.5702634	0.79	
1497.00	0.110	298.990	1496.96	1.30	-1.48	7.17	3259500.86	1336070.79	40.2521787	-104.5702644	0.21	
1591.00	0.250	332.840	1590.96	1.07	-1.25	7.00	3259500.68	1336071.02	40.2521794	-104.5702650	0.18	
1686.00	0.630	300.340	1685.96	0.64	-0.80	6.46	3259500.14	1336071.47	40.2521806	-104.5702669	0.46	
1781.00	1.030	288.790	1780.95	0.13	-0.26	5.20	3259498.88	1336072.01	40.2521821	-104.5702714	0.45	
1875.00	0.670	219.560	1874.94	0.31	-0.42	4.05	3259497.73	1336071.85	40.2521817	-104.5702755	1.07	LAST GYRODATA SURVEY
1992.00	0.310	197.060	1991.93	1.16	-1.25	3.52	3259497.20	1336071.02	40.2521795	-104.5702774	0.34	FIRST BH MWD SURVEY
2086.00	0.070	338.050	2085.93	1.35	-1.44	3.42	3259497.11	1336070.83	40.2521790	-104.5702778	0.39	
2181.00	0.000	97.430	2180.93	1.30	-1.38	3.40	3259497.08	1336070.89	40.2521791	-104.5702779	0.07	
2276.00	2.040	192.740	2275.91	2.95	-3.03	3.03	3259496.71	1336069.24	40.2521746	-104.5702793	2.15	
2370.00	4.010	190.600	2369.78	7.84	-7.89	2.05	3259495.74	1336064.38	40.2521613	-104.5702829	2.10	
2465.00	5.350	190.020	2464.46	15.50	-15.52	0.67	3259494.36	1336056.75	40.2521404	-104.5702882	1.41	
2560.00	6.530	188.120	2558.95	25.24	-25.23	-0.86	3259492.82	1336047.04	40.2521138	-104.5702940	1.26	
2655.00	10.210	189.170	2652.92	38.96	-38.89	-2.97	3259490.72	1336033.38	40.2520763	-104.5703021	3.88	
2749.00	13.860	189.120	2744.84	58.38	-58.24	-6.08	3259487.60	1336014.03	40.2520233	-104.5703140	3.88	

REFERENCE WELLPATH IDENTIFICATION			
Operator	NOBLE ENERGY, INC	Well	Becker D17-735
Field	WELD COUNTY (NOBLE NAD 83 GRID)	API	0512348856
Facility	SEC.05-T03N-R64W	Wellbore	Becker D17-735 AWB
Slot	SLOT#06 Becker D17-735 (1816'FSL & 1359'FEL,SEC.05)		

WELLPATH DATA (156 stations)												
MD [ft]	Inclination [°]	Azimuth [°]	TVD [ft]	Vert Sect [ft]	North [ft]	East [ft]	Grid East [US ft]	Grid North [US ft]	Latitude	Longitude	DLS [°/100ft]	Comments
2844.00	14.150	188.600	2837.01	81.17	-80.96	-9.62	3259484.06	1335991.32	40.2519611	-104.5703275	0.33	
2938.00	14.190	188.000	2928.15	104.02	-103.73	-12.94	3259480.74	1335968.55	40.2518987	-104.5703403	0.16	
3033.00	16.490	188.050	3019.76	128.98	-128.61	-16.45	3259477.23	1335943.66	40.2518305	-104.5703538	2.42	
3128.00	18.880	187.520	3110.27	157.67	-157.20	-20.35	3259473.33	1335915.07	40.2517521	-104.5703688	2.52	
3222.00	20.410	191.040	3198.80	188.95	-188.37	-25.48	3259468.20	1335883.91	40.2516667	-104.5703884	2.06	
3317.00	19.870	193.310	3287.99	221.09	-220.34	-32.37	3259461.31	1335851.94	40.2515791	-104.5704142	1.00	
3411.00	20.260	190.050	3376.28	252.81	-251.91	-38.89	3259454.80	1335820.37	40.2514927	-104.5704388	1.26	
3506.00	21.030	189.590	3465.18	285.95	-284.92	-44.60	3259449.09	1335787.36	40.2514022	-104.5704605	0.83	
3601.00	20.830	190.500	3553.92	319.50	-318.33	-50.51	3259443.17	1335753.95	40.2513107	-104.5704829	0.40	
3695.00	20.410	191.010	3641.89	352.17	-350.86	-56.69	3259436.99	1335721.43	40.2512216	-104.5705063	0.49	
3790.00	21.200	188.860	3730.70	385.54	-384.09	-62.50	3259431.18	1335688.20	40.2511305	-104.5705283	1.16	
3885.00	21.690	187.800	3819.12	420.02	-418.46	-67.53	3259426.16	1335653.83	40.2510364	-104.5705476	0.66	
3979.00	21.510	189.400	3906.52	454.35	-452.67	-72.70	3259420.98	1335619.62	40.2509426	-104.5705674	0.66	
4074.00	21.290	188.470	3994.97	488.72	-486.91	-78.09	3259415.60	1335585.38	40.2508488	-104.5705880	0.43	
4169.00	21.240	189.010	4083.50	522.89	-520.96	-83.32	3259410.37	1335551.33	40.2507554	-104.5706080	0.21	
4263.00	21.220	188.990	4171.13	556.63	-554.58	-88.65	3259405.04	1335517.71	40.2506633	-104.5706284	0.02	
4358.00	21.380	187.560	4259.64	590.90	-588.73	-93.61	3259400.08	1335483.57	40.2505697	-104.5706475	0.57	
4453.00	21.310	188.070	4348.12	625.26	-622.99	-98.31	3259395.37	1335449.31	40.2504758	-104.5706656	0.21	
4547.00	21.380	188.480	4435.67	659.23	-656.84	-103.24	3259390.45	1335415.45	40.2503831	-104.5706845	0.18	
4642.00	21.130	189.100	4524.21	693.39	-690.88	-108.50	3259385.19	1335381.42	40.2502898	-104.5707046	0.35	
4737.00	21.110	189.130	4612.83	727.31	-724.68	-113.92	3259379.77	1335347.62	40.2501972	-104.5707253	0.02	
4832.00	21.190	189.260	4701.43	761.27	-758.51	-119.40	3259374.29	1335313.79	40.2501045	-104.5707462	0.10	
4927.00	21.030	188.630	4790.05	795.20	-792.31	-124.72	3259368.97	1335279.99	40.2500118	-104.5707665	0.29	
5021.00	21.390	188.200	4877.69	828.95	-825.95	-129.69	3259363.99	1335246.35	40.2499196	-104.5707856	0.42	
5116.00	21.700	188.680	4966.05	863.58	-860.46	-134.82	3259358.87	1335211.85	40.2498251	-104.5708053	0.38	
5211.00	21.030	189.970	5054.52	897.86	-894.61	-140.42	3259353.27	1335177.70	40.2497315	-104.5708266	0.86	
5305.00	21.090	189.740	5142.24	931.27	-927.89	-146.20	3259347.49	1335144.42	40.2496403	-104.5708486	0.11	
5400.00	19.590	191.200	5231.32	963.88	-960.36	-152.18	3259341.50	1335111.95	40.2495514	-104.5708712	1.67	
5495.00	19.840	189.470	5320.75	995.54	-991.89	-157.93	3259335.76	1335080.43	40.2494650	-104.5708930	0.67	
5589.00	19.790	188.670	5409.18	1027.12	-1023.35	-162.95	3259330.74	1335048.96	40.2493788	-104.5709122	0.29	

REFERENCE WELLPATH IDENTIFICATION

Operator	NOBLE ENERGY, INC	Well	Becker D17-735
Field	WELD COUNTY (NOBLE NAD 83 GRID)	API	0512348856
Facility	SEC.05-T03N-R64W	Wellbore	Becker D17-735 AWB
Slot	SLOT#06 Becker D17-735 (1816'FSL & 1359'FEL,SEC.05)		

WELLPATH DATA (156 stations)

MD [ft]	Inclination [°]	Azimuth [°]	TVD [ft]	Vert Sect [ft]	North [ft]	East [ft]	Grid East [US ft]	Grid North [US ft]	Latitude	Longitude	DLS [°/100ft]	Comments
5684.00	21.550	188.420	5498.06	1060.40	-1056.51	-167.93	3259325.76	1335015.80	40.2492879	-104.5709313	1.85	
5779.00	21.540	189.030	5586.43	1095.00	-1091.00	-173.22	3259320.47	1334981.32	40.2491934	-104.5709515	0.24	
5873.00	21.080	189.240	5674.00	1128.86	-1124.73	-178.65	3259315.04	1334947.60	40.2491010	-104.5709722	0.50	
5968.00	20.030	192.340	5762.95	1161.76	-1157.48	-184.87	3259308.82	1334914.84	40.2490112	-104.5709957	1.59	
6063.00	19.910	192.270	5852.24	1193.62	-1189.18	-191.78	3259301.91	1334883.14	40.2489244	-104.5710217	0.13	
6158.00	19.800	192.520	5941.59	1225.30	-1220.70	-198.71	3259294.98	1334851.63	40.2488381	-104.5710477	0.15	
6253.00	19.620	192.400	6031.03	1256.75	-1251.98	-205.62	3259288.07	1334820.34	40.2487525	-104.5710736	0.19	
6347.00	19.380	192.430	6119.64	1287.56	-1282.63	-212.37	3259281.32	1334789.70	40.2486685	-104.5710989	0.26	
6442.00	19.080	192.080	6209.33	1318.29	-1313.20	-219.01	3259274.68	1334759.13	40.2485848	-104.5711239	0.34	
6631.00	19.990	191.020	6387.45	1380.50	-1375.12	-231.65	3259262.04	1334697.21	40.2484152	-104.5711715	0.52	
6725.00	24.490	190.710	6474.44	1415.59	-1410.05	-238.35	3259255.35	1334662.28	40.2483195	-104.5711967	4.79	
6820.00	32.790	188.150	6557.75	1460.66	-1454.94	-245.66	3259248.03	1334617.39	40.2481965	-104.5712247	8.83	
6914.00	41.880	187.170	6632.41	1517.27	-1511.39	-253.20	3259240.49	1334560.95	40.2480418	-104.5712538	9.69	
7009.00	49.900	185.220	6698.48	1585.19	-1579.15	-260.48	3259233.21	1334493.19	40.2478560	-104.5712824	8.57	
7104.00	57.810	181.440	6754.48	1661.79	-1655.66	-264.80	3259228.89	1334416.69	40.2476461	-104.5713007	8.92	
7198.00	65.730	181.620	6798.91	1744.54	-1738.38	-267.02	3259226.68	1334333.97	40.2474191	-104.5713118	8.43	
7293.00	73.780	181.380	6831.76	1833.60	-1827.41	-269.35	3259224.35	1334244.94	40.2471748	-104.5713235	8.48	
7388.00	82.280	179.860	6851.44	1926.43	-1920.25	-270.33	3259223.36	1334152.11	40.2469200	-104.5713305	9.08	
7483.00	89.750	181.050	6858.04	2021.12	-2014.95	-271.09	3259222.61	1334057.41	40.2466601	-104.5713367	7.96	
7577.00	89.880	179.850	6858.34	2115.10	-2108.94	-271.83	3259221.87	1333963.42	40.2464021	-104.5713429	1.28	
7672.00	90.000	178.790	6858.44	2210.04	-2203.94	-270.70	3259223.00	1333868.43	40.2461414	-104.5713424	1.12	
7767.00	90.280	178.620	6858.21	2304.93	-2298.91	-268.55	3259225.14	1333773.46	40.2458806	-104.5713383	0.34	
7861.00	89.630	178.930	6858.29	2398.83	-2392.89	-266.54	3259227.15	1333679.49	40.2456226	-104.5713346	0.77	
8050.00	89.420	180.340	6859.85	2587.72	-2581.87	-265.34	3259228.36	1333490.51	40.2451039	-104.5713374	0.75	
8145.00	89.750	179.830	6860.54	2682.69	-2676.87	-265.48	3259228.22	1333395.52	40.2448431	-104.5713415	0.64	
8334.00	90.180	179.600	6860.66	2871.61	-2865.87	-264.54	3259229.16	1333206.53	40.2443243	-104.5713452	0.26	
8429.00	90.400	179.680	6860.17	2966.56	-2960.86	-263.94	3259229.75	1333111.54	40.2440636	-104.5713466	0.25	
8523.00	90.340	180.010	6859.57	3060.52	-3054.86	-263.69	3259230.01	1333017.55	40.2438055	-104.5713492	0.36	
8712.00	90.280	180.750	6858.55	3249.48	-3243.85	-264.94	3259228.75	1332828.56	40.2432868	-104.5713608	0.39	
8807.00	90.180	179.870	6858.16	3344.46	-3338.85	-265.45	3259228.24	1332733.57	40.2430261	-104.5713662	0.93	

REFERENCE WELLPATH IDENTIFICATION

Operator	NOBLE ENERGY, INC	Well	Becker D17-735
Field	WELD COUNTY (NOBLE NAD 83 GRID)	API	0512348856
Facility	SEC.05-T03N-R64W	Wellbore	Becker D17-735 AWB
Slot	SLOT#06 Becker D17-735 (1816'FSL & 1359'FEL,SEC.05)		

WELLPATH DATA (156 stations)

MD [ft]	Inclination [°]	Azimuth [°]	TVD [ft]	Vert Sect [ft]	North [ft]	East [ft]	Grid East [US ft]	Grid North [US ft]	Latitude	Longitude	DLS [°/100ft]	Comments
8901.00	90.090	179.380	6857.94	3438.42	-3432.85	-264.84	3259228.86	1332639.58	40.2427681	-104.5713675	0.53	
8996.00	89.910	179.620	6857.94	3533.36	-3527.84	-264.01	3259229.68	1332544.59	40.2425073	-104.5713681	0.32	
9090.00	89.720	180.100	6858.25	3627.33	-3621.84	-263.78	3259229.91	1332450.59	40.2422493	-104.5713708	0.55	
9185.00	89.660	180.230	6858.76	3722.30	-3716.84	-264.05	3259229.64	1332355.60	40.2419885	-104.5713754	0.15	
9279.00	89.780	180.030	6859.22	3816.27	-3810.84	-264.27	3259229.43	1332261.60	40.2417305	-104.5713797	0.25	
9374.00	90.990	180.480	6858.58	3911.25	-3905.83	-264.69	3259229.00	1332166.61	40.2414698	-104.5713847	1.36	
9468.00	89.940	180.450	6857.82	4005.23	-3999.83	-265.45	3259228.24	1332072.62	40.2412118	-104.5713910	1.12	
9563.00	90.180	181.380	6857.72	4100.23	-4094.81	-266.97	3259226.72	1331977.64	40.2409511	-104.5714000	1.01	
9658.00	89.880	180.240	6857.67	4195.22	-4189.80	-268.31	3259225.38	1331882.66	40.2406905	-104.5714084	1.24	
9752.00	89.970	180.360	6857.79	4289.20	-4283.80	-268.80	3259224.89	1331788.66	40.2404325	-104.5714137	0.16	
9847.00	90.280	180.730	6857.58	4384.19	-4378.80	-269.71	3259223.99	1331693.67	40.2401717	-104.5714205	0.51	
9942.00	89.880	179.740	6857.45	4479.17	-4473.79	-270.10	3259223.60	1331598.68	40.2399110	-104.5714254	1.12	
10037.00	90.030	179.840	6857.53	4574.13	-4568.79	-269.75	3259223.94	1331503.68	40.2396502	-104.5714277	0.19	
10131.00	90.490	180.330	6857.10	4668.10	-4662.79	-269.89	3259223.80	1331409.69	40.2393922	-104.5714318	0.71	
10226.00	89.970	180.780	6856.72	4763.09	-4757.79	-270.81	3259222.88	1331314.70	40.2391315	-104.5714386	0.72	
10415.00	90.030	179.670	6856.72	4952.04	-4946.78	-271.55	3259222.14	1331125.71	40.2386128	-104.5714484	0.59	
10509.00	90.460	180.850	6856.32	5046.02	-5040.78	-271.98	3259221.72	1331031.72	40.2383548	-104.5714534	1.34	
10604.00	90.550	179.740	6855.48	5140.99	-5135.77	-272.47	3259221.23	1330936.73	40.2380941	-104.5714587	1.17	
10699.00	89.720	179.920	6855.26	5235.96	-5230.77	-272.19	3259221.51	1330841.74	40.2378333	-104.5714613	0.89	
10793.00	90.430	180.290	6855.13	5329.93	-5324.77	-272.36	3259221.34	1330747.74	40.2375753	-104.5714654	0.85	
10888.00	89.850	179.920	6854.90	5424.90	-5419.77	-272.53	3259221.16	1330652.75	40.2373145	-104.5714696	0.72	
10983.00	90.620	180.400	6854.51	5519.88	-5514.77	-272.80	3259220.90	1330557.75	40.2370538	-104.5714741	0.96	
11077.00	89.910	179.910	6854.08	5613.85	-5608.76	-273.05	3259220.64	1330463.76	40.2367958	-104.5714786	0.92	
11172.00	90.120	179.580	6854.05	5708.81	-5703.76	-272.63	3259221.07	1330368.77	40.2365350	-104.5714806	0.41	
11266.00	89.750	180.400	6854.16	5802.78	-5797.76	-272.61	3259221.08	1330274.77	40.2362770	-104.5714841	0.96	
11361.00	89.780	178.790	6854.55	5897.73	-5892.75	-271.94	3259221.75	1330179.78	40.2360163	-104.5714852	1.70	
11456.00	89.720	178.870	6854.96	5992.63	-5987.73	-270.00	3259223.69	1330084.81	40.2357555	-104.5714819	0.11	
11551.00	89.600	178.950	6855.53	6087.53	-6082.72	-268.19	3259225.50	1329989.83	40.2354947	-104.5714789	0.15	
11645.00	89.720	179.440	6856.08	6181.46	-6176.70	-266.87	3259226.82	1329895.84	40.2352367	-104.5714777	0.54	
11740.00	89.780	179.730	6856.50	6276.41	-6271.70	-266.19	3259227.51	1329800.85	40.2349759	-104.5714788	0.31	

REFERENCE WELLPATH IDENTIFICATION			
Operator	NOBLE ENERGY, INC	Well	Becker D17-735
Field	WELD COUNTY (NOBLE NAD 83 GRID)	API	0512348856
Facility	SEC.05-T03N-R64W	Wellbore	Becker D17-735 AWB
Slot	SLOT#06 Becker D17-735 (1816'FSL & 1359'FEL,SEC.05)		

WELLPATH DATA (156 stations)

MD [ft]	Inclination [°]	Azimuth [°]	TVD [ft]	Vert Sect [ft]	North [ft]	East [ft]	Grid East [US ft]	Grid North [US ft]	Latitude	Longitude	DLS [°/100ft]	Comments
11835.00	90.060	179.780	6856.63	6371.37	-6366.70	-265.78	3259227.92	1329705.86	40.2347152	-104.5714809	0.30	
11929.00	89.940	179.730	6856.63	6465.33	-6460.70	-265.38	3259228.32	1329611.86	40.2344572	-104.5714830	0.14	
12024.00	89.820	180.090	6856.83	6560.29	-6555.70	-265.23	3259228.47	1329516.87	40.2341964	-104.5714861	0.40	
12119.00	90.150	179.390	6856.85	6655.25	-6650.70	-264.80	3259228.90	1329421.87	40.2339356	-104.5714881	0.81	
12213.00	89.480	178.590	6857.16	6749.16	-6744.68	-263.14	3259230.55	1329327.89	40.2336776	-104.5714857	1.11	
12308.00	89.750	179.090	6857.80	6844.06	-6839.66	-261.22	3259232.48	1329232.92	40.2334169	-104.5714823	0.60	
12403.00	89.750	179.520	6858.21	6938.99	-6934.65	-260.06	3259233.63	1329137.93	40.2331561	-104.5714818	0.45	
12497.00	89.970	179.060	6858.44	7032.93	-7028.64	-258.90	3259234.79	1329043.95	40.2328981	-104.5714811	0.54	
12592.00	90.030	179.280	6858.44	7127.85	-7123.63	-257.52	3259236.17	1328948.96	40.2326373	-104.5714798	0.24	
12687.00	90.250	179.140	6858.21	7222.78	-7218.62	-256.21	3259237.48	1328853.97	40.2323765	-104.5714786	0.27	
12781.00	90.280	181.060	6857.77	7316.75	-7312.62	-256.38	3259237.32	1328759.98	40.2321185	-104.5714828	2.04	
12876.00	90.430	179.210	6857.19	7411.72	-7407.61	-256.60	3259237.09	1328664.99	40.2318578	-104.5714871	1.95	
12971.00	90.030	178.700	6856.80	7506.63	-7502.59	-254.87	3259238.82	1328570.01	40.2315970	-104.5714845	0.68	
13065.00	90.220	178.790	6856.60	7600.52	-7596.57	-252.81	3259240.88	1328476.04	40.2313390	-104.5714806	0.22	
13160.00	90.060	178.630	6856.37	7695.42	-7691.55	-250.67	3259243.02	1328381.07	40.2310783	-104.5714765	0.24	
13254.00	90.280	179.180	6856.09	7789.32	-7785.53	-248.88	3259244.82	1328287.09	40.2308203	-104.5714736	0.63	
13349.00	89.690	178.720	6856.11	7884.23	-7880.51	-247.13	3259246.56	1328192.11	40.2305595	-104.5714709	0.79	
13443.00	89.910	178.140	6856.44	7978.10	-7974.48	-244.56	3259249.13	1328098.15	40.2303015	-104.5714652	0.66	
13538.00	92.120	180.460	6854.76	8073.01	-8069.44	-243.40	3259250.30	1328003.19	40.2300408	-104.5714646	3.37	
13632.00	90.800	179.530	6852.36	8166.95	-8163.41	-243.39	3259250.30	1327909.23	40.2297829	-104.5714681	1.72	
13727.00	89.690	178.200	6851.96	8261.84	-8258.38	-241.51	3259252.19	1327814.26	40.2295221	-104.5714650	1.82	
13822.00	89.450	178.490	6852.67	8356.70	-8353.34	-238.76	3259254.93	1327719.31	40.2292614	-104.5714587	0.40	
13916.00	90.150	177.700	6853.00	8450.54	-8447.29	-235.64	3259258.05	1327625.36	40.2290035	-104.5714510	1.12	
14011.00	89.630	178.040	6853.18	8545.36	-8542.22	-232.11	3259261.58	1327530.43	40.2287428	-104.5714419	0.65	
14105.00	89.750	178.990	6853.69	8639.23	-8636.19	-229.67	3259264.02	1327436.47	40.2284848	-104.5714367	1.02	
14200.00	90.000	180.190	6853.90	8734.18	-8731.18	-228.99	3259264.70	1327341.48	40.2282240	-104.5714379	1.29	
14294.00	89.940	180.610	6853.94	8828.16	-8825.18	-229.65	3259264.04	1327247.49	40.2279660	-104.5714438	0.45	
14389.00	89.940	180.440	6854.04	8923.15	-8920.18	-230.52	3259263.17	1327152.50	40.2277053	-104.5714504	0.18	
14484.00	89.690	179.500	6854.35	9018.12	-9015.18	-230.47	3259263.22	1327057.50	40.2274446	-104.5714538	1.02	
14578.00	89.820	180.250	6854.75	9112.08	-9109.17	-230.26	3259263.43	1326963.51	40.2271865	-104.5714566	0.81	

REFERENCE WELLPATH IDENTIFICATION

Operator	NOBLE ENERGY, INC	Well	Becker D17-735
Field	WELD COUNTY (NOBLE NAD 83 GRID)	API	0512348856
Facility	SEC.05-T03N-R64W	Wellbore	Becker D17-735 AWB
Slot	SLOT#06 Becker D17-735 (1816'FSL & 1359'FEL,SEC.05)		

WELLPATH DATA (156 stations) † = interpolated, ‡ = extrapolated station

MD [ft]	Inclination [°]	Azimuth [°]	TVD [ft]	Vert Sect [ft]	North [ft]	East [ft]	Grid East [US ft]	Grid North [US ft]	Latitude	Longitude	DLS [°/100ft]	Comments
14673.00	89.510	179.820	6855.31	9207.05	-9204.17	-230.32	3259263.37	1326868.51	40.2269258	-104.5714604	0.56	
14767.00	90.830	179.740	6855.03	9301.01	-9298.17	-229.96	3259263.73	1326774.52	40.2266678	-104.5714626	1.41	
14862.00	90.430	179.150	6853.99	9395.95	-9393.16	-229.04	3259264.65	1326679.54	40.2264070	-104.5714629	0.75	
14957.00	90.370	179.180	6853.32	9490.87	-9488.14	-227.66	3259266.04	1326584.55	40.2261463	-104.5714615	0.07	
15004.00	90.250	180.140	6853.07	9537.85	-9535.14	-227.38	3259266.31	1326537.56	40.2260172	-104.5714622	2.06	LAST BH MWD SURVEY
15028.00‡	90.250	180.140	6852.96	9561.84	-9559.14	-227.44	3259266.26	1326513.56	40.2259514	-104.5714634	0.00	PROJECTION TO BIT

HOLE & CASING SECTIONS - Ref Wellbore: Becker D17-735 AWB Ref Wellpath: Becker D17-735 AWP

String/Diameter	Start MD [ft]	End MD [ft]	Interval [ft]	Start TVD [ft]	End TVD [ft]	Start N/S [ft]	Start E/W [ft]	End N/S [ft]	End E/W [ft]
9.625in Casing Surface	30.00	1932.00	1902.00	30.00	1931.93	-0.03	0.03	-0.88	3.70

REFERENCE WELLPATH IDENTIFICATION			
Operator	NOBLE ENERGY, INC	Well	Becker D17-735
Field	WELD COUNTY (NOBLE NAD 83 GRID)	API	0512348856
Facility	SEC.05-T03N-R64W	Wellbore	Becker D17-735 AWB
Slot	SLOT#06 Becker D17-735 (1816'FSL & 1359'FEL,SEC.05)		

TARGETS								
Name	TVD [ft]	North [ft]	East [ft]	Grid East [US ft]	Grid North [US ft]	Latitude	Longitude	Shape
SEC.08-T03N-R64W	-24.00	-219.54	-3273.22	3256220.61	1335852.74	40.2516740	-104.5820240	polygon
2D Polygon: dimensions not calculated								
SEC.17-T03N-R64W	-24.00	-219.54	-3273.22	3256220.61	1335852.74	40.2516740	-104.5820240	polygon
2D Polygon: dimensions not calculated								
Becker D17-735 BHL REV-1 (2450'FNL & 1649'FEL,SEC.17)	6859.00	-9566.04	-240.33	3259253.36	1326506.66	40.2259328	-104.5715098	point
Becker D17-735 TPZ REV-1(200'FNL & 1640'FEL,SEC.08)	6859.00	-2020.55	-269.23	3259224.46	1334051.81	40.2466447	-104.5713303	point

WELLPATH COMPOSITION - Ref Wellbore: Becker D17-735 AWB						Ref Wellpath: Becker D17-735 AWP	
Start MD [ft]	End MD [ft]	Positional Uncertainty Model	Log Name/Comment		Wellbore	Survey Date	
0.00	1875.00	Gyrodata 2015 - GC+DROP+COND	Gyrodata 2015 - GC+DROP+COND 13-1/2" <81 - 1875>		Becker D17-735 AWB	10/30/2020	
1875.00	15028.00	OWSG MWD rev2 (MS+IFR1) NOBLE	OWSG MWD Rev2 (MS+IFR1) NOBLE 8-1/2" <1992 - 15004>		Becker D17-735 AWB	10/30/2020	

REFERENCE WELLPATH IDENTIFICATION

Operator	NOBLE ENERGY, INC	Well	Becker D17-735
Field	WELD COUNTY (NOBLE NAD 83 GRID)	API	0512348856
Facility	SEC.05-T03N-R64W	Wellbore	Becker D17-735 AWB
Slot	SLOT#06 Becker D17-735 (1816'FSL & 1359'FEL,SEC.05)		

WELLPATH COMMENTS

MD [ft]	Inclination [°]	Azimuth [°]	TVD [ft]	Comment
81.00	0.410	132.850	81.00	FIRST GYRODATA SURVEY
1875.00	0.670	219.560	1874.94	LAST GYRODATA SURVEY
1992.00	0.310	197.060	1991.93	FIRST BH MWD SURVEY
15004.00	90.250	180.140	6853.07	LAST BH MWD SURVEY
15028.00	90.250	180.140	6852.96	PROJECTION TO BIT