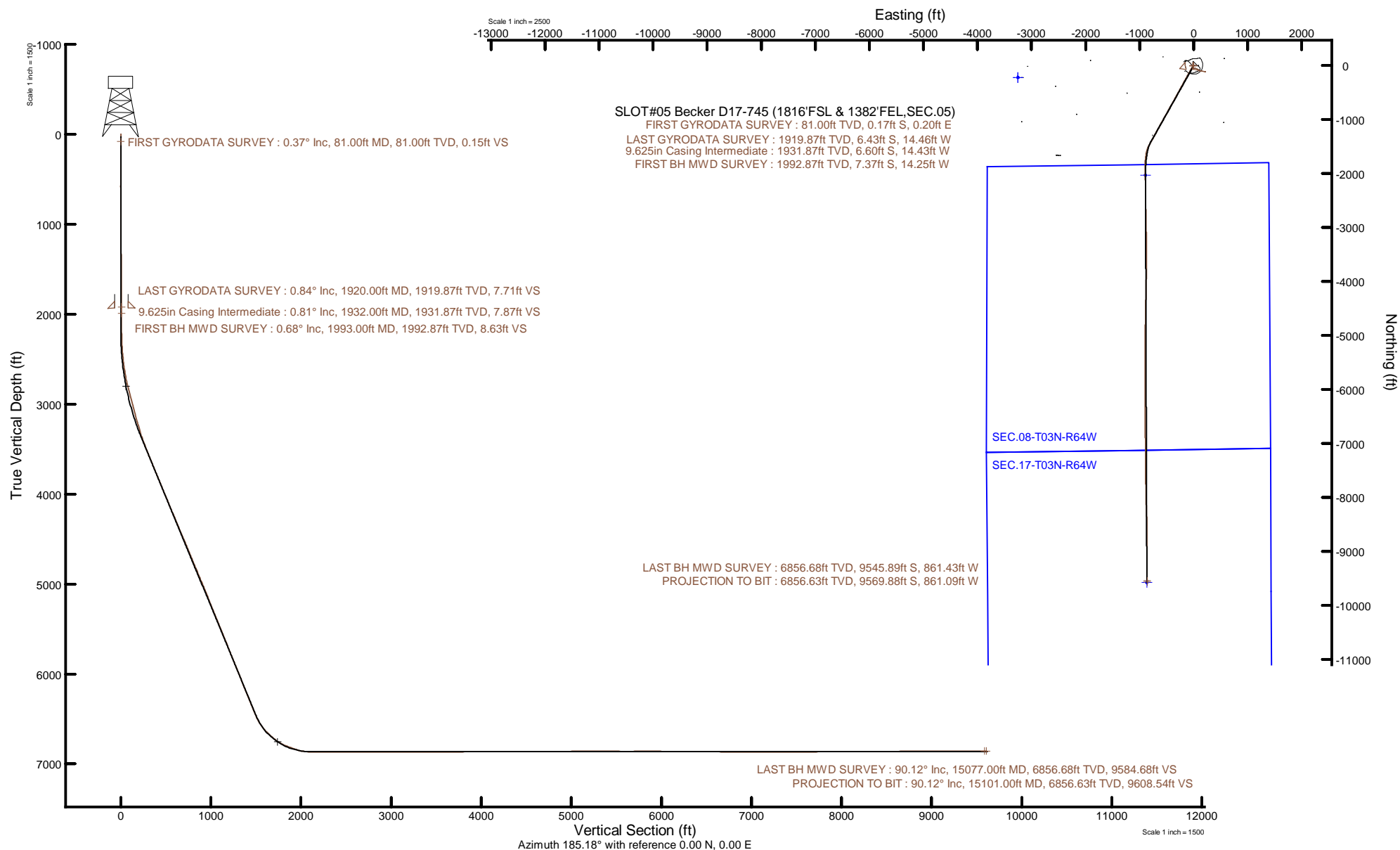


# NOBLE ENERGY, INC

Location: COLORADO Slot: SLOT#05 Becker D17-745 (1816'FSL & 1382'FEL,SEC.05)  
Field: WELD COUNTY (NOBLE NAD 83 GRID) Well: Becker D17-745  
Facility: SEC.05-T03N-R64W Wellbore: Becker D17-745 PWB



Plot reference wellpath is Becker D17-745 PWP Rev-A.0	Grid System: NAD83 / Lambert Colorado SP, Northern Zone (501), US feet
True vertical depths are referenced to H&P 517 (30) (RT)	North Reference: Grid north
Reference wellpath measured depths are referenced to H&P 517 (30) (RT)	Scale: True distance
H&P 517 (30) (RT) to Mean Sea Level: 4777 feet	Coordinates are in feet referenced to Slot
Mean Sea Level to Mud line (At Slot: SLOT#05 Becker D17-745 (1816'FSL & 1382'FEL,SEC.05)): 0 feet	Depths are in feet
Offset wellpath MDs are referenced to each path's default MD datum	Created by: painsetr on 2020-11-05; Database: WellArchitectDB



## REFERENCE WELLPATH IDENTIFICATION

Operator	NOBLE ENERGY, INC	Well	Becker D17-745
Field	WELD COUNTY (NOBLE NAD 83 GRID)	API	0512348934
Facility	SEC.05-T03N-R64W	Wellbore	Becker D17-745 AWB
Slot	SLOT#05 Becker D17-745 (1816'FSL & 1382'FEL,SEC.05)		

## REPORT SETUP INFORMATION

Projection System	NAD83 / Lambert Colorado SP, Northern Zone (501), US feet	Software System	WellArchitect® 6.0
North Reference	Grid	User	Painsetr
Scale	0.999957	Report Generated	11/5/2020 at 12:35:43 PM
Convergence at slot	0.60° East	Database	WellArchitectDB

## WELLPATH LOCATION

	Local coordinates		Grid coordinates		Geographic coordinates	
	North[ft]	East[ft]	Easting[US ft]	Northing[US ft]	Latitude	Longitude
Slot Location	219.36	3250.76	3259471.35	1336072.04	40.2521830°	-104.5703700°
Facility Reference Pt			3256220.74	1335852.69	40.2516739°	-104.5820235°
Field Reference Pt			3000000.00	4454105.15	48.7761986°	-105.5000000°

## WELLPATH DATUM

Calculation method	Minimum curvature	H&P 517 (30') (RT) to Facility Vertical Datum	4777.00ft
Horizontal Reference Pt	Slot	H&P 517 (30') (RT) to Mean Sea Level	4777.00ft
Vertical Reference Pt	H&P 517 (30') (RT)	H&P 517 (30') (RT) to Mud Line at Slot (SLOT#05 Becker D17-745 (1816'FSL & 1382'FEL,SEC.05))	4777.00ft
MD Reference Pt	H&P 517 (30') (RT)	Section Origin	N 0.00, E 0.00 ft
Field Vertical Reference	Mean Sea Level	Section Azimuth	185.18°

### REFERENCE WELLPATH IDENTIFICATION

Operator	NOBLE ENERGY, INC	Well	Becker D17-745
Field	WELD COUNTY (NOBLE NAD 83 GRID)	API	0512348934
Facility	SEC.05-T03N-R64W	Wellbore	Becker D17-745 AWB
Slot	SLOT#05 Becker D17-745 (1816'FSL & 1382'FEL,SEC.05)		

### WELLPATH DATA (159 stations)

MD [ft]	Inclination [°]	Azimuth [°]	TVD [ft]	Vert Sect [ft]	North [ft]	East [ft]	Grid East [US ft]	Grid North [US ft]	Latitude	Longitude	DLS [°/100ft]	Comments
0.00	0.000	130.600	0.00	0.00	0.00	0.00	3259471.35	1336072.04	40.2521830	-104.5703700	0.00	
81.00	0.370	130.600	81.00	0.15	-0.17	0.20	3259471.55	1336071.87	40.2521825	-104.5703693	0.46	FIRST GYRODATA SURVEY
175.00	0.090	119.150	175.00	0.36	-0.40	0.49	3259471.85	1336071.63	40.2521819	-104.5703682	0.30	
266.00	0.360	35.240	266.00	0.14	-0.20	0.72	3259472.07	1336071.83	40.2521824	-104.5703674	0.40	
361.00	0.040	193.330	361.00	-0.09	0.01	0.89	3259472.24	1336072.04	40.2521830	-104.5703668	0.42	
456.00	0.340	322.120	456.00	-0.26	0.20	0.70	3259472.06	1336072.23	40.2521835	-104.5703675	0.39	
550.00	0.450	294.920	549.99	-0.59	0.57	0.20	3259471.55	1336072.61	40.2521846	-104.5703693	0.23	
645.00	0.680	244.920	644.99	-0.43	0.49	-0.65	3259470.70	1336072.53	40.2521844	-104.5703723	0.55	
739.00	0.660	244.930	738.98	0.12	0.02	-1.65	3259469.71	1336072.06	40.2521831	-104.5703759	0.02	
834.00	0.650	257.680	833.98	0.56	-0.32	-2.67	3259468.69	1336071.71	40.2521822	-104.5703796	0.15	
929.00	1.040	255.410	928.97	1.02	-0.65	-4.03	3259467.33	1336071.38	40.2521813	-104.5703845	0.41	
1023.00	0.510	230.630	1022.96	1.60	-1.13	-5.18	3259466.18	1336070.90	40.2521800	-104.5703886	0.65	
1118.00	0.720	248.760	1117.95	2.16	-1.62	-6.06	3259465.29	1336070.42	40.2521787	-104.5703918	0.30	
1213.00	1.160	222.520	1212.94	3.19	-2.54	-7.27	3259464.09	1336069.49	40.2521762	-104.5703961	0.64	
1307.00	0.860	248.030	1306.93	4.27	-3.51	-8.56	3259462.79	1336068.53	40.2521736	-104.5704008	0.57	
1402.00	1.250	234.640	1401.91	5.27	-4.38	-10.07	3259461.28	1336067.66	40.2521713	-104.5704062	0.48	
1497.00	0.830	239.970	1496.89	6.34	-5.32	-11.51	3259459.84	1336066.72	40.2521687	-104.5704114	0.45	
1591.00	0.530	281.460	1590.89	6.68	-5.57	-12.53	3259458.83	1336066.46	40.2521681	-104.5704151	0.59	
1686.00	0.560	281.610	1685.88	6.58	-5.39	-13.41	3259457.94	1336066.64	40.2521686	-104.5704183	0.03	
1781.00	0.500	250.720	1780.88	6.70	-5.44	-14.26	3259457.10	1336066.60	40.2521685	-104.5704213	0.30	
1875.00	0.450	166.360	1874.88	7.22	-5.93	-14.56	3259456.80	1336066.11	40.2521671	-104.5704224	0.68	
1920.00	0.840	169.690	1919.87	7.71	-6.43	-14.46	3259456.90	1336065.61	40.2521658	-104.5704220	0.87	LAST GYRODATA SURVEY
1993.00	0.680	164.660	1992.87	8.63	-7.37	-14.25	3259457.11	1336064.66	40.2521632	-104.5704213	0.24	FIRST BH MWD SURVEY
2088.00	0.140	80.960	2087.87	9.13	-7.90	-13.98	3259457.37	1336064.14	40.2521617	-104.5704204	0.71	
2182.00	0.070	241.420	2181.87	9.13	-7.91	-13.92	3259457.43	1336064.13	40.2521617	-104.5704202	0.22	
2277.00	2.220	210.460	2276.84	10.83	-9.52	-14.90	3259456.45	1336062.52	40.2521573	-104.5704238	2.27	
2372.00	4.260	210.410	2371.68	15.68	-14.15	-17.62	3259453.73	1336057.89	40.2521447	-104.5704337	2.15	
2466.00	5.820	210.330	2465.32	23.15	-21.27	-21.80	3259449.56	1336050.76	40.2521252	-104.5704489	1.66	
2561.00	7.910	210.160	2559.63	33.44	-31.09	-27.51	3259443.84	1336040.95	40.2520985	-104.5704697	2.20	
2656.00	10.360	209.300	2653.42	47.16	-44.19	-34.98	3259436.38	1336027.85	40.2520627	-104.5704970	2.58	

### REFERENCE WELLPATH IDENTIFICATION

Operator	NOBLE ENERGY, INC	Well	Becker D17-745
Field	WELD COUNTY (NOBLE NAD 83 GRID)	API	0512348934
Facility	SEC.05-T03N-R64W	Wellbore	Becker D17-745 AWB
Slot	SLOT#05 Becker D17-745 (1816'FSL & 1382'FEL,SEC.05)		

### WELLPATH DATA (159 stations)

MD [ft]	Inclination [°]	Azimuth [°]	TVD [ft]	Vert Sect [ft]	North [ft]	East [ft]	Grid East [US ft]	Grid North [US ft]	Latitude	Longitude	DLS [°/100ft]	Comments
2751.00	13.010	208.910	2746.44	64.75	-61.00	-44.33	3259427.02	1336011.04	40.2520168	-104.5705311	2.79	
2845.00	15.630	208.800	2837.51	86.04	-81.36	-55.55	3259415.81	1335990.68	40.2519613	-104.5705721	2.79	
2940.00	17.650	208.400	2928.53	111.01	-105.25	-68.57	3259402.79	1335966.79	40.2518961	-104.5706196	2.13	
3034.00	16.740	209.700	3018.33	136.42	-129.54	-82.05	3259389.31	1335942.50	40.2518298	-104.5706688	1.05	
3129.00	15.450	209.040	3109.60	160.44	-152.49	-94.97	3259376.39	1335919.55	40.2517672	-104.5707160	1.37	
3224.00	16.880	208.890	3200.85	184.64	-175.63	-107.78	3259363.58	1335896.41	40.2517040	-104.5707627	1.51	
3318.00	17.940	209.070	3290.54	210.37	-200.24	-121.41	3259349.95	1335871.81	40.2516369	-104.5708124	1.13	
3413.00	20.650	208.730	3380.19	239.11	-227.72	-136.57	3259334.79	1335844.33	40.2515619	-104.5708678	2.86	
3507.00	23.660	208.950	3467.24	271.58	-258.76	-153.67	3259317.69	1335813.28	40.2514772	-104.5709302	3.20	
3602.00	23.900	208.990	3554.18	306.63	-292.28	-172.23	3259299.14	1335779.77	40.2513857	-104.5709979	0.25	
3696.00	23.080	209.620	3640.39	340.82	-324.95	-190.56	3259280.80	1335747.10	40.2512966	-104.5710649	0.91	
3791.00	24.110	208.460	3727.44	375.60	-358.20	-209.01	3259262.35	1335713.85	40.2512058	-104.5711322	1.19	
3886.00	24.590	208.520	3813.99	411.57	-392.62	-227.70	3259243.67	1335679.43	40.2511119	-104.5712004	0.51	
3981.00	24.510	208.720	3900.41	447.78	-427.27	-246.60	3259224.76	1335644.78	40.2510173	-104.5712695	0.12	
4075.00	24.310	208.820	3986.00	483.38	-461.32	-265.30	3259206.07	1335610.73	40.2509244	-104.5713377	0.22	
4170.00	24.360	208.520	4072.56	519.28	-495.67	-284.08	3259187.29	1335576.39	40.2508306	-104.5714063	0.14	
4265.00	24.230	209.170	4159.15	555.08	-529.91	-302.94	3259168.43	1335542.15	40.2507372	-104.5714751	0.31	
4359.00	24.690	208.510	4244.71	590.73	-564.00	-321.71	3259149.66	1335508.06	40.2506442	-104.5715436	0.57	
4454.00	24.470	209.010	4331.10	626.95	-598.64	-340.72	3259130.65	1335473.42	40.2505496	-104.5716130	0.32	
4549.00	24.740	208.370	4417.48	663.22	-633.34	-359.71	3259111.66	1335438.72	40.2504549	-104.5716824	0.40	
4643.00	24.690	208.570	4502.87	699.32	-667.89	-378.44	3259092.93	1335404.18	40.2503606	-104.5717508	0.10	
4738.00	24.610	209.320	4589.21	735.58	-702.56	-397.62	3259073.75	1335369.50	40.2502660	-104.5718208	0.34	
4833.00	24.620	209.730	4675.58	771.63	-736.99	-417.12	3259054.25	1335335.08	40.2501721	-104.5718919	0.18	
4928.00	24.260	208.900	4762.07	807.49	-771.26	-436.36	3259035.01	1335300.81	40.2500786	-104.5719621	0.52	
5022.00	24.570	208.580	4847.66	843.11	-805.33	-455.05	3259016.33	1335266.74	40.2499856	-104.5720303	0.36	
5117.00	24.440	208.690	4934.10	879.26	-839.92	-473.93	3258997.45	1335232.16	40.2498912	-104.5720993	0.15	
5212.00	24.070	208.740	5020.72	915.04	-874.14	-492.68	3258978.70	1335197.93	40.2497978	-104.5721677	0.39	
5307.00	24.250	208.800	5107.39	950.67	-908.22	-511.39	3258959.98	1335163.85	40.2497048	-104.5722360	0.19	
5401.00	23.070	210.430	5193.49	985.01	-941.02	-530.02	3258941.36	1335131.06	40.2496153	-104.5723040	1.44	
5496.00	24.220	209.390	5280.52	1019.62	-974.05	-549.01	3258922.37	1335098.03	40.2495252	-104.5723733	1.29	

### REFERENCE WELLPATH IDENTIFICATION

Operator	NOBLE ENERGY, INC	Well	Becker D17-745
Field	WELD COUNTY (NOBLE NAD 83 GRID)	API	0512348934
Facility	SEC.05-T03N-R64W	Wellbore	Becker D17-745 AWB
Slot	SLOT#05 Becker D17-745 (1816'FSL & 1382'FEL,SEC.05)		

### WELLPATH DATA (159 stations)

MD [ft]	Inclination [°]	Azimuth [°]	TVD [ft]	Vert Sect [ft]	North [ft]	East [ft]	Grid East [US ft]	Grid North [US ft]	Latitude	Longitude	DLS [°/100ft]	Comments
5591.00	23.960	209.530	5367.24	1054.97	-1007.81	-568.08	3258903.30	1335064.27	40.2494331	-104.5724428	0.28	
5685.00	24.320	208.580	5453.02	1090.12	-1041.42	-586.75	3258884.63	1335030.66	40.2493414	-104.5725110	0.56	
5780.00	23.660	208.740	5539.81	1125.54	-1075.31	-605.27	3258866.11	1334996.77	40.2492489	-104.5725786	0.70	
5875.00	24.110	208.660	5626.68	1160.81	-1109.05	-623.75	3258847.64	1334963.03	40.2491568	-104.5726460	0.47	
5970.00	23.650	209.400	5713.55	1195.99	-1142.68	-642.41	3258828.98	1334929.41	40.2490650	-104.5727141	0.58	
6159.00	24.110	208.430	5886.37	1266.03	-1209.65	-679.39	3258791.99	1334862.44	40.2488822	-104.5728491	0.32	
6254.00	24.170	208.670	5973.06	1301.69	-1243.78	-697.96	3258773.42	1334828.31	40.2487891	-104.5729169	0.12	
6348.00	22.560	208.970	6059.35	1335.84	-1276.44	-715.93	3258755.46	1334795.65	40.2487000	-104.5729825	1.72	
6443.00	24.130	208.950	6146.57	1370.29	-1309.38	-734.16	3258737.23	1334762.72	40.2486101	-104.5730491	1.65	
6538.00	23.750	208.920	6233.40	1405.57	-1343.12	-752.81	3258718.58	1334728.98	40.2485180	-104.5731171	0.40	
6632.00	23.910	209.140	6319.38	1440.30	-1376.32	-771.24	3258700.15	1334695.78	40.2484274	-104.5731844	0.19	
6726.00	23.380	209.090	6405.49	1474.76	-1409.26	-789.58	3258681.81	1334662.84	40.2483375	-104.5732513	0.56	
6821.00	27.920	209.270	6491.11	1512.32	-1445.15	-809.63	3258661.76	1334626.95	40.2482396	-104.5733245	4.78	
6916.00	36.910	206.870	6571.22	1559.23	-1490.09	-833.45	3258637.94	1334582.01	40.2481169	-104.5734115	9.56	
7010.00	44.960	199.560	6642.22	1617.75	-1546.69	-857.38	3258614.02	1334525.41	40.2479622	-104.5734993	9.95	
7105.00	48.870	192.420	6707.15	1685.83	-1613.33	-876.33	3258595.06	1334458.78	40.2477799	-104.5735697	6.86	
7200.00	59.420	186.080	6762.75	1762.48	-1689.20	-888.40	3258583.00	1334382.91	40.2475720	-104.5736158	12.34	
7294.00	69.150	184.160	6803.49	1847.06	-1773.45	-895.89	3258575.51	1334298.66	40.2473409	-104.5736458	10.51	
7389.00	70.400	178.960	6836.35	1935.99	-1862.52	-898.30	3258573.10	1334209.60	40.2470965	-104.5736577	5.30	
7484.00	80.780	179.140	6859.96	2027.35	-1954.40	-896.78	3258574.62	1334117.73	40.2468443	-104.5736557	10.93	
7579.00	90.400	179.790	6867.26	2121.49	-2049.00	-895.90	3258575.50	1334023.13	40.2465846	-104.5736561	10.15	
7673.00	89.910	178.120	6867.00	2214.93	-2142.98	-894.18	3258577.21	1333929.15	40.2463266	-104.5736535	1.85	
7768.00	90.030	179.640	6867.05	2309.35	-2237.96	-892.33	3258579.07	1333834.18	40.2460658	-104.5736504	1.60	
7862.00	90.310	179.250	6866.77	2402.88	-2331.95	-891.42	3258579.98	1333740.19	40.2458078	-104.5736506	0.51	
7957.00	89.910	179.520	6866.59	2497.40	-2426.95	-890.40	3258581.00	1333645.20	40.2455470	-104.5736506	0.51	
8052.00	90.030	178.820	6866.64	2591.87	-2521.94	-889.02	3258582.37	1333550.21	40.2452863	-104.5736492	0.75	
8146.00	89.820	178.950	6866.76	2685.31	-2615.92	-887.19	3258584.20	1333456.24	40.2450283	-104.5736461	0.26	
8241.00	90.220	178.870	6866.73	2779.74	-2710.90	-885.38	3258586.01	1333361.26	40.2447675	-104.5736432	0.43	
8335.00	90.030	179.100	6866.52	2873.19	-2804.89	-883.72	3258587.68	1333267.28	40.2445095	-104.5736408	0.32	
8430.00	90.370	178.900	6866.19	2967.64	-2899.87	-882.06	3258589.33	1333172.30	40.2442487	-104.5736384	0.42	

## REFERENCE WELLPATH IDENTIFICATION

Operator	NOBLE ENERGY, INC	Well	Becker D17-745
Field	WELD COUNTY (NOBLE NAD 83 GRID)	API	0512348934
Facility	SEC.05-T03N-R64W	Wellbore	Becker D17-745 AWB
Slot	SLOT#05 Becker D17-745 (1816'FSL & 1382'FEL,SEC.05)		

## WELLPATH DATA (159 stations)

MD [ft]	Inclination [°]	Azimuth [°]	TVD [ft]	Vert Sect [ft]	North [ft]	East [ft]	Grid East [US ft]	Grid North [US ft]	Latitude	Longitude	DLS [°/100ft]	Comments
8524.00	90.340	179.070	6865.61	3061.09	-2993.85	-880.40	3258591.00	1333078.32	40.2439907	-104.5736359	0.18	
8619.00	89.910	177.960	6865.40	3155.44	-3088.82	-877.93	3258593.46	1332983.36	40.2437300	-104.5736307	1.25	
8714.00	89.820	177.890	6865.63	3249.68	-3183.76	-874.49	3258596.90	1332888.42	40.2434693	-104.5736219	0.12	
8808.00	89.720	178.410	6866.00	3342.98	-3277.71	-871.46	3258599.93	1332794.48	40.2432113	-104.5736146	0.56	
8902.00	90.120	180.870	6866.14	3436.53	-3371.70	-870.87	3258600.52	1332700.49	40.2429533	-104.5736160	2.65	
8997.00	90.370	180.140	6865.73	3531.21	-3466.69	-871.71	3258599.69	1332605.50	40.2426926	-104.5736225	0.81	
9091.00	90.060	180.680	6865.38	3624.89	-3560.69	-872.38	3258599.01	1332511.51	40.2424346	-104.5736284	0.66	
9186.00	89.940	180.840	6865.38	3719.60	-3655.68	-873.64	3258597.75	1332416.52	40.2421739	-104.5736365	0.21	
9281.00	90.430	180.930	6865.07	3814.34	-3750.67	-875.11	3258596.29	1332321.54	40.2419132	-104.5736453	0.52	
9375.00	90.120	180.730	6864.62	3908.06	-3844.66	-876.47	3258594.93	1332227.55	40.2416553	-104.5736537	0.39	
9470.00	90.060	180.960	6864.47	4002.79	-3939.65	-877.87	3258593.52	1332132.57	40.2413946	-104.5736623	0.25	
9564.00	90.090	182.430	6864.35	4096.62	-4033.60	-880.65	3258590.74	1332038.61	40.2411368	-104.5736758	1.56	
9659.00	89.970	180.590	6864.30	4191.42	-4128.57	-883.15	3258588.24	1331943.66	40.2408762	-104.5736883	1.94	
9753.00	90.650	181.090	6863.79	4285.15	-4222.55	-884.53	3258586.86	1331849.67	40.2406182	-104.5736967	0.90	
9848.00	90.090	180.840	6863.17	4379.89	-4317.54	-886.13	3258585.26	1331754.69	40.2403576	-104.5737060	0.65	
9943.00	90.800	181.230	6862.44	4474.64	-4412.52	-887.85	3258583.55	1331659.72	40.2400969	-104.5737157	0.85	
10038.00	90.370	180.910	6861.47	4569.39	-4507.50	-889.62	3258581.77	1331564.74	40.2398363	-104.5737256	0.56	
10132.00	89.910	181.060	6861.24	4663.13	-4601.48	-891.24	3258580.16	1331470.76	40.2395783	-104.5737349	0.51	
10227.00	90.180	181.180	6861.16	4757.90	-4696.46	-893.09	3258578.30	1331375.78	40.2393177	-104.5737451	0.31	
10322.00	90.220	180.730	6860.83	4852.64	-4791.45	-894.68	3258576.72	1331280.80	40.2390570	-104.5737544	0.48	
10416.00	90.340	179.730	6860.37	4946.29	-4885.45	-895.05	3258576.34	1331186.81	40.2387990	-104.5737592	1.07	
10511.00	90.400	180.480	6859.76	5040.91	-4980.44	-895.23	3258576.17	1331091.82	40.2385383	-104.5737634	0.79	
10605.00	89.940	180.400	6859.48	5134.59	-5074.44	-895.95	3258575.44	1330997.82	40.2382803	-104.5737695	0.50	
10700.00	90.120	179.710	6859.43	5229.21	-5169.44	-896.04	3258575.35	1330902.83	40.2380195	-104.5737734	0.75	
10795.00	89.850	180.270	6859.45	5323.82	-5264.44	-896.02	3258575.37	1330807.83	40.2377588	-104.5737769	0.65	
10889.00	89.880	180.510	6859.68	5417.49	-5358.44	-896.66	3258574.73	1330713.84	40.2375008	-104.5737827	0.26	
10984.00	89.750	180.520	6859.98	5512.18	-5453.43	-897.52	3258573.88	1330618.85	40.2372401	-104.5737893	0.14	
11079.00	89.880	180.720	6860.29	5606.87	-5548.43	-898.55	3258572.85	1330523.86	40.2369794	-104.5737965	0.25	
11173.00	90.460	180.240	6860.01	5700.56	-5642.42	-899.33	3258572.06	1330429.87	40.2367214	-104.5738029	0.80	
11267.00	90.400	181.080	6859.30	5794.26	-5736.41	-900.42	3258570.98	1330335.88	40.2364634	-104.5738103	0.90	

## REFERENCE WELLPATH IDENTIFICATION

Operator	NOBLE ENERGY, INC	Well	Becker D17-745
Field	WELD COUNTY (NOBLE NAD 83 GRID)	API	0512348934
Facility	SEC.05-T03N-R64W	Wellbore	Becker D17-745 AWB
Slot	SLOT#05 Becker D17-745 (1816'FSL & 1382'FEL,SEC.05)		

## WELLPATH DATA (159 stations)

MD [ft]	Inclination [°]	Azimuth [°]	TVD [ft]	Vert Sect [ft]	North [ft]	East [ft]	Grid East [US ft]	Grid North [US ft]	Latitude	Longitude	DLS [°/100ft]	Comments
11362.00	89.540	180.010	6859.35	5888.95	-5831.41	-901.32	3258570.07	1330240.89	40.2362027	-104.5738171	1.45	
11457.00	89.600	179.560	6860.07	5983.53	-5926.40	-900.96	3258570.43	1330145.90	40.2359420	-104.5738193	0.48	
11646.00	89.540	179.530	6861.49	6171.61	-6115.39	-899.46	3258571.93	1329956.92	40.2354232	-104.5738210	0.04	
11741.00	89.600	179.940	6862.20	6266.18	-6210.39	-899.02	3258572.37	1329861.93	40.2351624	-104.5738230	0.44	
11836.00	89.600	179.640	6862.86	6360.76	-6305.38	-898.68	3258572.72	1329766.94	40.2349016	-104.5738253	0.32	
11930.00	89.540	179.640	6863.57	6454.31	-6399.38	-898.08	3258573.31	1329672.94	40.2346436	-104.5738267	0.06	
12025.00	89.630	179.700	6864.26	6548.87	-6494.38	-897.54	3258573.86	1329577.95	40.2343829	-104.5738283	0.11	
12120.00	89.510	179.980	6864.97	6643.46	-6589.37	-897.27	3258574.12	1329482.96	40.2341221	-104.5738309	0.32	
12215.00	89.570	179.580	6865.73	6738.03	-6684.37	-896.91	3258574.49	1329387.97	40.2338613	-104.5738332	0.43	
12309.00	89.510	179.330	6866.49	6831.56	-6778.36	-896.01	3258575.38	1329293.98	40.2336033	-104.5738335	0.27	
12499.00	89.850	179.500	6867.55	7020.60	-6968.35	-894.07	3258577.32	1329104.00	40.2330818	-104.5738336	0.20	
12593.00	89.780	179.280	6867.85	7114.12	-7062.34	-893.07	3258578.32	1329010.01	40.2328238	-104.5738336	0.25	
12688.00	89.850	179.710	6868.16	7208.65	-7157.34	-892.24	3258579.16	1328915.02	40.2325630	-104.5738341	0.46	
12783.00	90.150	179.320	6868.16	7303.19	-7252.33	-891.43	3258579.96	1328820.03	40.2323022	-104.5738348	0.52	
12877.00	90.220	179.360	6867.85	7396.70	-7346.33	-890.35	3258581.05	1328726.04	40.2320442	-104.5738344	0.09	
12972.00	90.370	179.910	6867.36	7491.25	-7441.32	-889.74	3258581.65	1328631.05	40.2317834	-104.5738358	0.60	
13066.00	90.490	179.470	6866.66	7584.82	-7535.32	-889.23	3258582.16	1328537.06	40.2315254	-104.5738375	0.49	
13161.00	90.710	179.310	6865.66	7679.33	-7630.31	-888.22	3258583.17	1328442.07	40.2312647	-104.5738374	0.29	
13255.00	90.990	179.040	6864.27	7772.81	-7724.29	-886.87	3258584.52	1328348.10	40.2310067	-104.5738361	0.41	
13350.00	90.550	180.000	6862.99	7867.33	-7819.28	-886.07	3258585.32	1328253.11	40.2307459	-104.5738368	1.11	
13444.00	90.340	178.720	6862.26	7960.84	-7913.26	-885.02	3258586.37	1328159.13	40.2304879	-104.5738366	1.38	
13539.00	89.940	178.050	6862.03	8055.18	-8008.23	-882.35	3258589.05	1328064.17	40.2302272	-104.5738305	0.82	
13633.00	90.400	178.390	6861.75	8148.48	-8102.18	-879.43	3258591.97	1327970.22	40.2299692	-104.5738236	0.61	
13728.00	90.310	177.760	6861.16	8242.75	-8197.12	-876.24	3258595.16	1327875.28	40.2297085	-104.5738157	0.67	
13823.00	90.150	177.530	6860.78	8336.93	-8292.04	-872.33	3258599.06	1327780.37	40.2294479	-104.5738053	0.29	
13917.00	89.880	177.830	6860.76	8430.13	-8385.97	-868.53	3258602.87	1327686.45	40.2291899	-104.5737952	0.43	
14012.00	90.370	178.820	6860.55	8524.45	-8480.92	-865.75	3258605.64	1327591.50	40.2289292	-104.5737888	1.16	
14106.00	90.120	179.710	6860.15	8617.94	-8574.91	-864.54	3258606.85	1327497.51	40.2286712	-104.5737880	0.98	
14201.00	90.340	179.900	6859.77	8712.53	-8669.91	-864.22	3258607.17	1327402.52	40.2284104	-104.5737904	0.31	
14296.00	90.460	179.920	6859.10	8807.12	-8764.91	-864.07	3258607.32	1327307.52	40.2281497	-104.5737934	0.13	



## REFERENCE WELLPATH IDENTIFICATION

Operator	NOBLE ENERGY, INC	Well	Becker D17-745
Field	WELD COUNTY (NOBLE NAD 83 GRID)	API	0512348934
Facility	SEC.05-T03N-R64W	Wellbore	Becker D17-745 AWB
Slot	SLOT#05 Becker D17-745 (1816'FSL & 1382'FEL,SEC.05)		

## WELLPATH DATA (159 stations) † = interpolated, ‡ = extrapolated station

MD [ft]	Inclination [°]	Azimuth [°]	TVD [ft]	Vert Sect [ft]	North [ft]	East [ft]	Grid East [US ft]	Grid North [US ft]	Latitude	Longitude	DLS [°/100ft]	Comments
14390.00	90.590	179.260	6858.24	8900.67	-8858.90	-863.40	3258607.99	1327213.53	40.2278917	-104.5737945	0.72	
14485.00	90.430	180.160	6857.40	8995.24	-8953.90	-862.92	3258608.47	1327118.54	40.2276309	-104.5737963	0.96	
14579.00	89.910	180.370	6857.12	9088.89	-9047.89	-863.35	3258608.04	1327024.55	40.2273729	-104.5738014	0.60	
14674.00	90.000	179.830	6857.19	9183.52	-9142.89	-863.52	3258607.87	1326929.55	40.2271122	-104.5738056	0.58	
14769.00	90.000	179.760	6857.19	9278.10	-9237.89	-863.18	3258608.21	1326834.56	40.2268514	-104.5738079	0.07	
14863.00	90.030	179.610	6857.17	9371.67	-9331.89	-862.66	3258608.73	1326740.56	40.2265934	-104.5738096	0.16	
14958.00	90.180	179.950	6856.99	9466.24	-9426.89	-862.30	3258609.10	1326645.57	40.2263326	-104.5738118	0.39	
15077.00	90.120	179.210	6856.68	9584.68	-9545.89	-861.43	3258609.97	1326526.58	40.2260060	-104.5738131	0.62	LAST BH MWD SURVEY
15101.00‡	90.120	179.210	6856.63	9608.54	-9569.88	-861.09	3258610.30	1326502.58	40.2259401	-104.5738128	0.00	PROJECTION TO BIT

## HOLE & CASING SECTIONS - Ref Wellbore: Becker D17-745 AWB Ref Wellpath: Becker D17-745 AWP

String/Diameter	Start MD [ft]	End MD [ft]	Interval [ft]	Start TVD [ft]	End TVD [ft]	Start N/S [ft]	Start E/W [ft]	End N/S [ft]	End E/W [ft]
9.625in Casing Intermediate	30.00	1932.00	1902.00	30.00	1931.87	-0.02	0.03	-6.60	-14.43



### REFERENCE WELLPATH IDENTIFICATION

Operator	NOBLE ENERGY, INC	Well	Becker D17-745
Field	WELD COUNTY (NOBLE NAD 83 GRID)	API	0512348934
Facility	SEC.05-T03N-R64W	Wellbore	Becker D17-745 AWB
Slot	SLOT#05 Becker D17-745 (1816'FSL & 1382'FEL,SEC.05)		

### TARGETS

Name	TVD [ft]	North [ft]	East [ft]	Grid East [US ft]	Grid North [US ft]	Latitude	Longitude	Shape
SEC.08-T03N-R64W	-24.00	-219.31	-3250.89	3256220.61	1335852.74	40.2516740	-104.5820240	polygon
	2D Polygon: dimensions not calculated							
SEC.17-T03N-R64W	-24.00	-219.31	-3250.89	3256220.61	1335852.74	40.2516740	-104.5820240	polygon
	2D Polygon: dimensions not calculated							
Becker D17-745 BHL REV-1 (2451'FNL & 2299'FEL,SEC.17)	6863.00	-9575.74	-867.67	3258603.72	1326496.73	40.2259242	-104.5738366	point
Becker D17-745 TPZ REV-1 (200'FNL & 2286'FEL,SEC.08)	6863.00	-2030.05	-892.07	3258579.32	1334042.08	40.2466365	-104.5736417	point

### WELLPATH COMPOSITION - Ref Wellbore: Becker D17-745 AWB Ref Wellpath: Becker D17-745 AWP

Start MD [ft]	End MD [ft]	Positional Uncertainty Model	Log Name/Comment	Wellbore	Survey Date
0.00	1920.00	Gyrodatta 2015 - GC+DROP+COND	Gyrodatta 2015 - GC+DROP+COND 13-1/2" <81 - 1920>	Becker D17-745 AWB	11/2/2020
1920.00	15101.00	OWSG MWD rev2 (MS+IFR1) NOBLE	OWSG MWD Rev2 (MS+IFR1) NOBLE 8-1/2" <1993 - 15077>	Becker D17-745 AWB	11/2/2020

## REFERENCE WELLPATH IDENTIFICATION

Operator	NOBLE ENERGY, INC	Well	Becker D17-745
Field	WELD COUNTY (NOBLE NAD 83 GRID)	API	0512348934
Facility	SEC.05-T03N-R64W	Wellbore	Becker D17-745 AWB
Slot	SLOT#05 Becker D17-745 (1816'FSL & 1382'FEL,SEC.05)		

## WELLPATH COMMENTS

MD [ft]	Inclination [°]	Azimuth [°]	TVD [ft]	Comment
81.00	0.370	130.600	81.00	FIRST GYRODATA SURVEY
1920.00	0.840	169.690	1919.87	LAST GYRODATA SURVEY
1993.00	0.680	164.660	1992.87	FIRST BH MWD SURVEY
15077.00	90.120	179.210	6856.68	LAST BH MWD SURVEY
15101.00	90.120	179.210	6856.63	PROJECTION TO BIT