



Gamma Ray

LWD MEMORY LOG

Scale:

1:240

True Vertical Depth

Depth Reference:

Driller's Depth

Company: Noble Energy
Well: Becker D17-745
Field: Wattenberg
County: Weld
State: Colorado
Country: United States

Status:

Final Print

Surface Location:
Latitude: 40° 15' 07.859" N
Longitude: 104° 34' 13.332" W

Other Services:

API No: 05-123-48934-00

Job ID: 110581740

SEC: 5 TWN: 3N RGE: 64W

Permanent Datum (P.D.): Mean Sea Level

Log Measured From: Rlg Floor

Elevation: Above P.D.:

0.00 ft
4777.00 ft
Elev. KB:
Elev. DF:
Elev. GL:

Dates

From: 2020-10-31
To: 2020-11-02
Spud: 2020-10-19

Drilled (ft) 1935.00
Top: 1935.00
Bottom: 15101.00

Logged (ft) 1935.00
Top: 1935.00
Bottom: 15087.00
Azi Reference North: 66.61
Total Magnetic Field Strength: (nT) 51873
Mag to Reference North Correction: (deg) 7.33

Interval

Magnetic Field Reference

Borehole Record

Casing Record

Hole Size (in)	From (ft)	To (ft)	Size (in)	Weight (lb/ft)	From (ft)	To (ft)
13.500	30.00	1935.00	9.625	36.00	30.00	1925.00
8.500	1935.00	15101.00				

Mud Record

Deviation Record

Type	From (ft)	To (ft)	Hole Size (in)	Interval (ft)	Inc Az (Start)	Inc Az (End)
Oil Based Mud	1935.00	15101.00	8.500	13166.00	0.84 169.69	90.12 179.21

Acquisition System

Software Version

Other

Cadence
DeliverableGen
RT 5.7
5.7.8878.1

Rig:
Contractor:
District:
H&P 517
Helmerich & Payne Drilling Co
RMA

Unit: D&E

(C) 2020 Baker Hughes Company - All rights reserved. Baker Hughes and its affiliates provides this information on an "as is" basis for general information purposes and believes it to be accurate as of the date of publication. Baker Hughes does not make any representation as to the accuracy or completeness of the information and makes no warranties of any kind, specific, implied or oral, to the fullest extent permissible by law, including those of merchantability and fitness for a particular purpose or use. Baker Hughes hereby disclaims any and all liability for any direct, indirect, consequential or special damages, claims for lost profits, or third party claims arising from the use of the information, whether a claim is asserted in contract, tort, or otherwise. The Baker Hughes logo is a trademark of Baker Hughes Company.

Log Run Summary

Run No	Bit Run No.	Bit Size (in)	Bit Type	Bit Gauge Length (in)	Assembly Type	Logged Interval		Bit Depth Interval		Date / Time		Circ. Hours (h)
						Top	Bottom	From	To	Start Logging	End Logging	
						(ft)	(ft)	(ft)	(ft)			
1	1	8.500	PDC	3.00	AutoTrak Curve	1935.00	7098.00	1935.00	7112.00	2020-10-31 18:19	2020-11-01 09:51	16.13
2	2	8.500	PDC	3.00	AutoTrak Curve	7098.00	15087.95	7112.00	15101.00	2020-11-01 17:54	2020-11-02 14:12	20.28

Crew

Name	Arrive	Depart	Name	Arrive	Depart	Name	Arrive	Depart
------	--------	--------	------	--------	--------	------	--------	--------

	Wellsite	Wellsite		Wellsite	Wellsite		Wellsite	Wellsite
Tien Bui	2020-10-30	2020-11-03						

Mud Properties Record

Date / Time	Run No.	Depth (ft)	Mud Type	Density (ppg)	Viscosity (cP)	pH	Fluid Loss (cm3)	Oil / Water	Source	Total Chlorides (ppm)	K+ (%)
2020-10-30 17:42	1	1935.00	Oil Based Mud	9.2	10	N/A	20.0	79.8/20.2	Active Pit	27000	0.00
2020-11-01 11:56	1	5550.00	Oil Based Mud	9.2	11	N/A	19.3	78.4/21.6	Active Pit	29000	0.00
2020-11-01 15:36	2	7111.00	Oil Based Mud	9.2	11	N/A	19.3	78.4/21.6	Active Pit	28000	0.00

Equipment and Service Data

Run No.	Tool	Serial Number	Measurement	Sensor Offset (ft)	Bit Offset (ft)	Max O.D. (in)	Min I.D. (in)
1	AutoTrak Curve Steering Unit	13867779	Near Bit Inclination	5.93	6.88	7.000	4.330
1	AutoTrak Curve Steering Unit	13867779	Near Bit VSS	5.93	6.88	7.000	4.330
1	AutoTrak Curve MWD	14219820	Gamma (single)	2.74	13.05	7.000	3.250
1	AutoTrak Curve MWD	14219820	Directional (mag)	12.27	22.58	7.000	3.250
2	AutoTrak Curve Steering Unit	12273684	Near Bit VSS	5.93	6.88	7.000	4.330
2	AutoTrak Curve Steering Unit	12273684	Near Bit Inclination	5.93	6.88	7.000	4.330
2	AutoTrak Curve MWD	14371880	Gamma (single)	2.75	13.05	7.000	3.250
2	AutoTrak Curve MWD	14371880	Directional (mag)	12.27	22.57	7.000	3.250

Service and Tool Mnemonics

Mnemonic	Name	Description
ATC SU	AutoTrak Curve SU	Auto Trak Curve Steering Unit
ATC MWD	AutoTrak Curve MWD	Auto Trak Curve MWD
ATC CPM	AutoTrak Curve CPM	Auto Trak Curve CPM

Comments

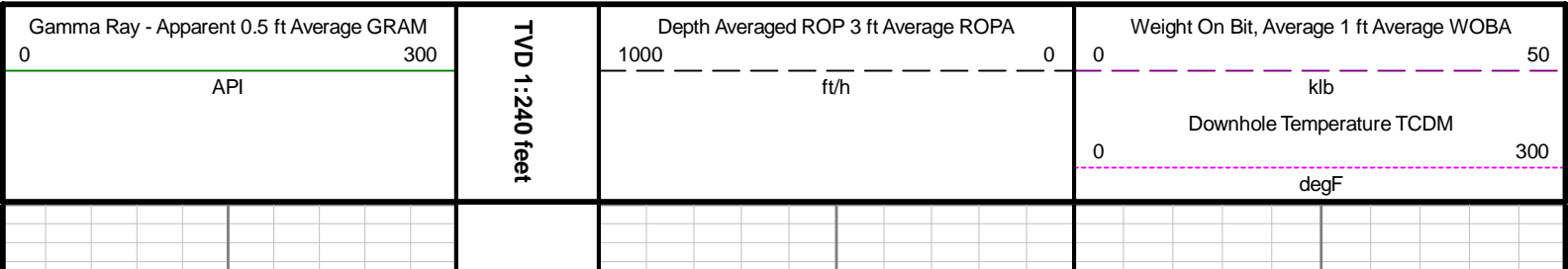
- 1 Depth measurements were obtained from a depth control system not supplied or operated by Baker Hughes. Due to lack of control by Baker Hughes logging engineers, depth calibrations and measurements could not be independently verified.
- 2 Baker Hughes LWD Run 1 utilized 6 ¾ inch NaviGamma service (Gamma Ray and Directional) behind a 8 1/2 inch bit and rotary steerable assembly from 1935 to 15101 feet MD (1935 to 6857 feet TVD).
- 3 The Gamma Ray Apparent (GRAM) data is presented 0 to 300 API, per the customer's request.
- 4 Several gans appear in the log due to drilling ahead before the assembly had time to properly power on.

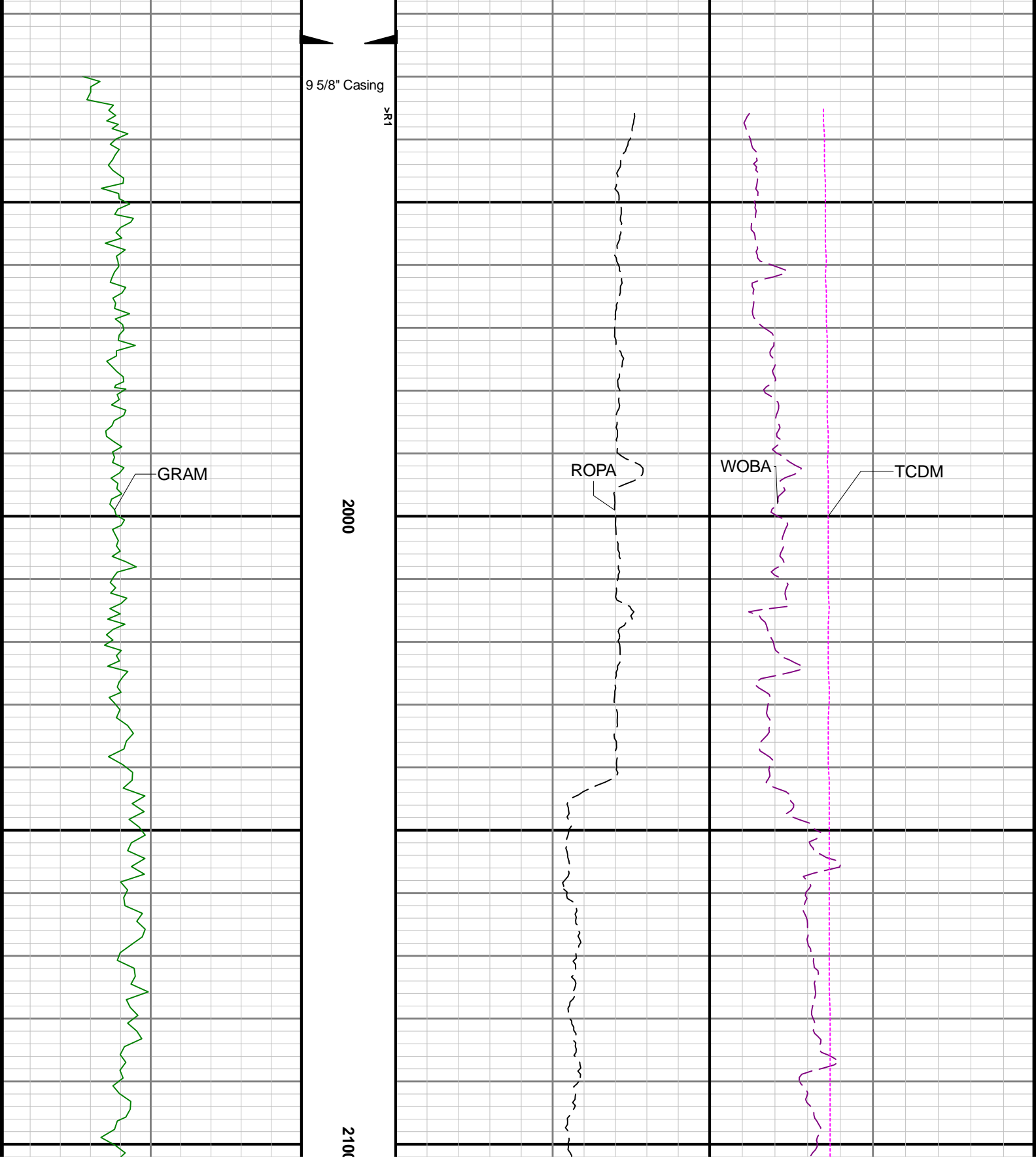
Remarks

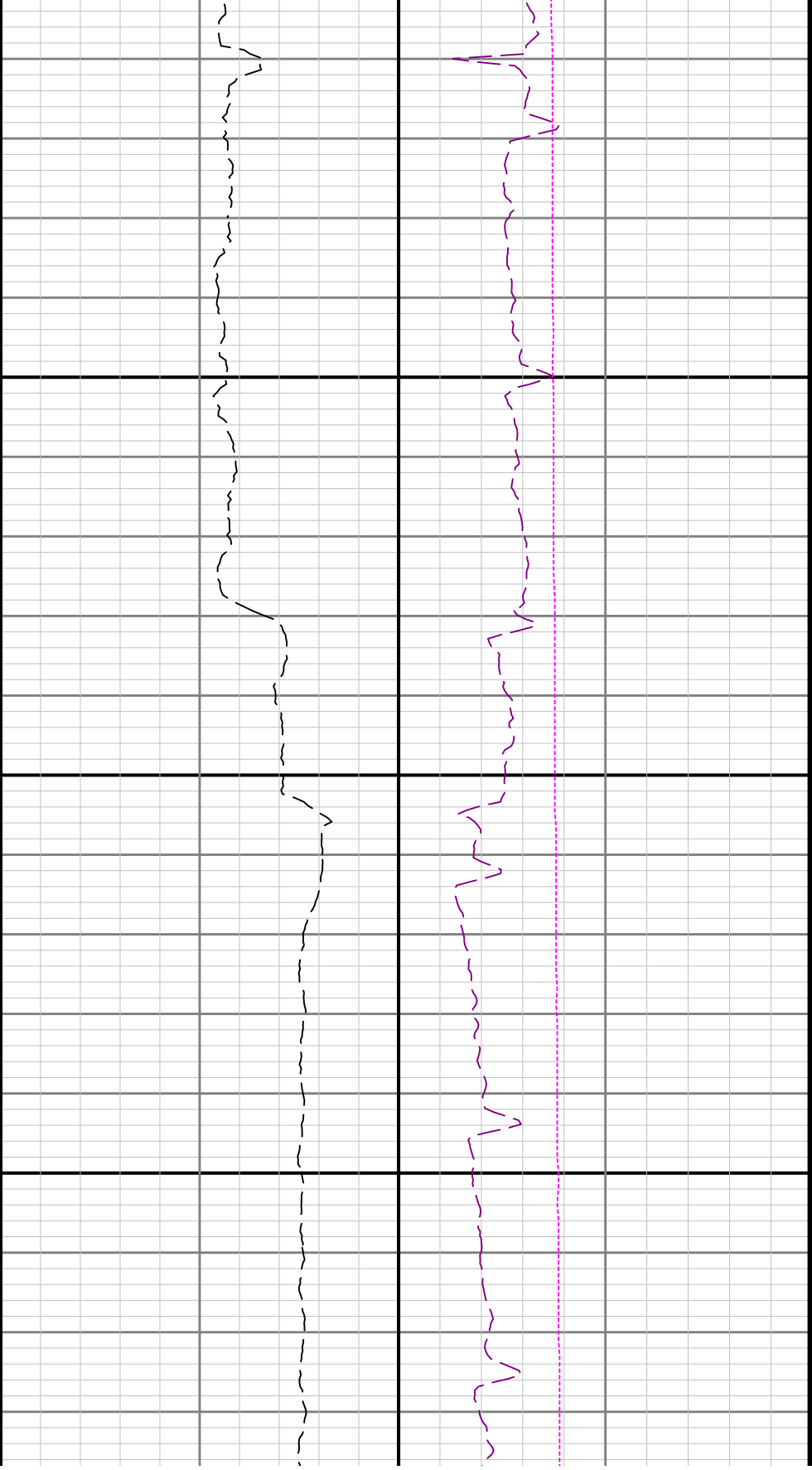
Number	Depth (ft)	Hole Section (in)	Run No.	Remark
--------	---------------	-------------------------	------------	--------

Curve Mnemonics

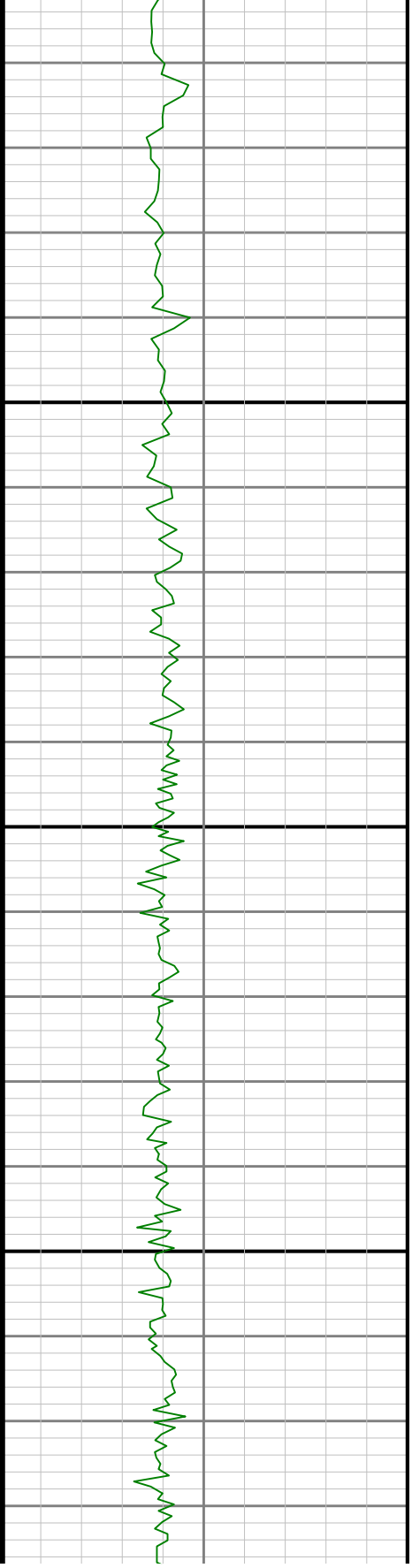
Presented Curves	Description	Units
ROPA	Depth Averaged ROP 3 ft Average	ft/h
WOBA	Weight On Bit 1 ft Average	klb
GRAM	Gamma Ray - Apparent - Memory 0.5 ft Average	API
TCDM	Directional Real-Time Survey Temperature	degF

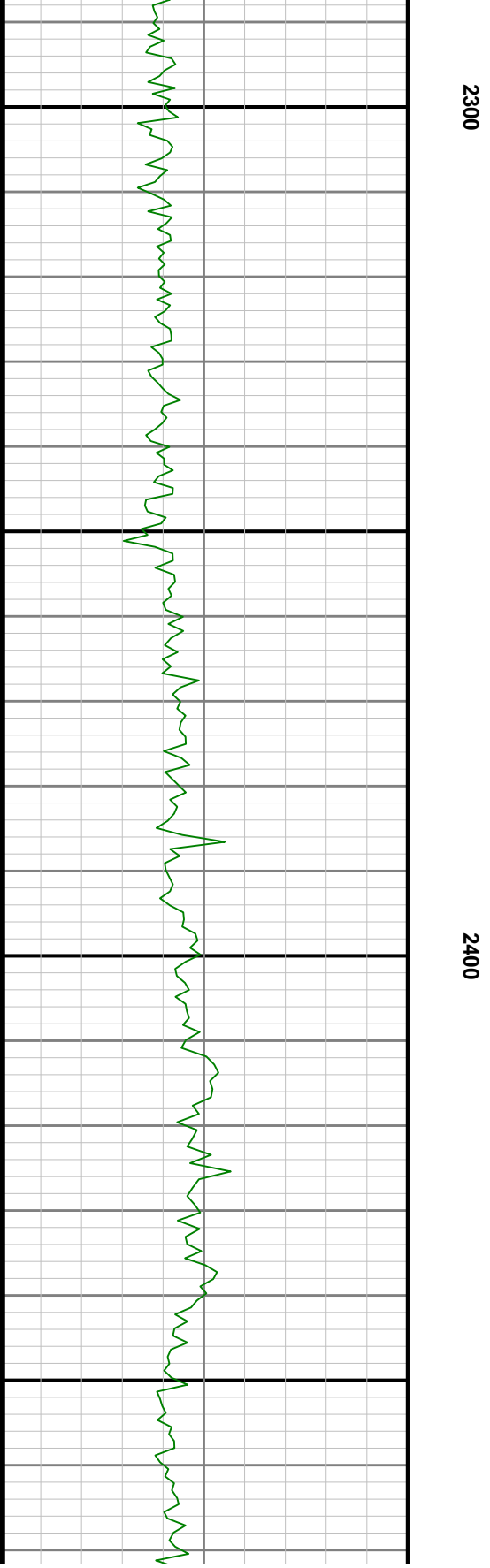
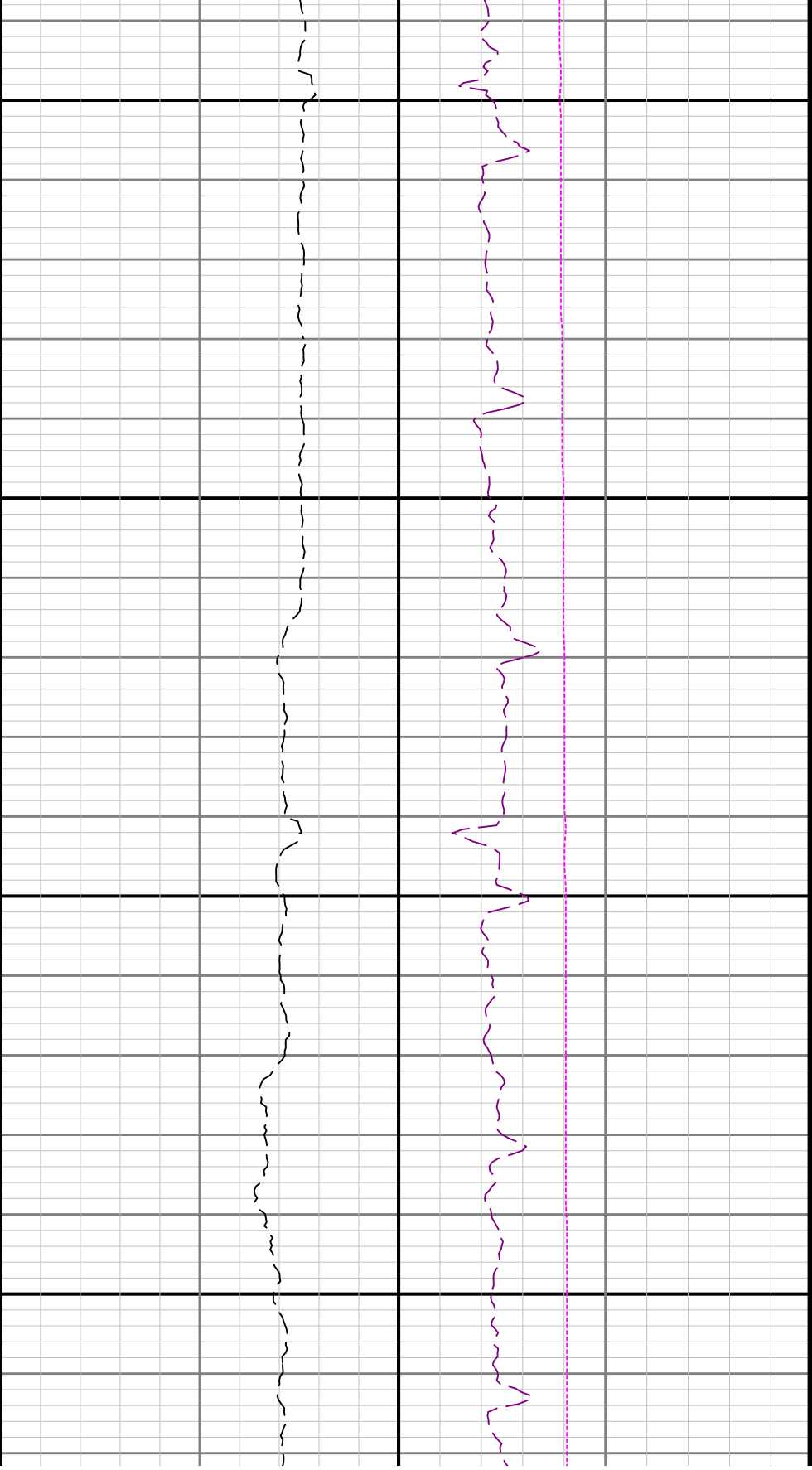


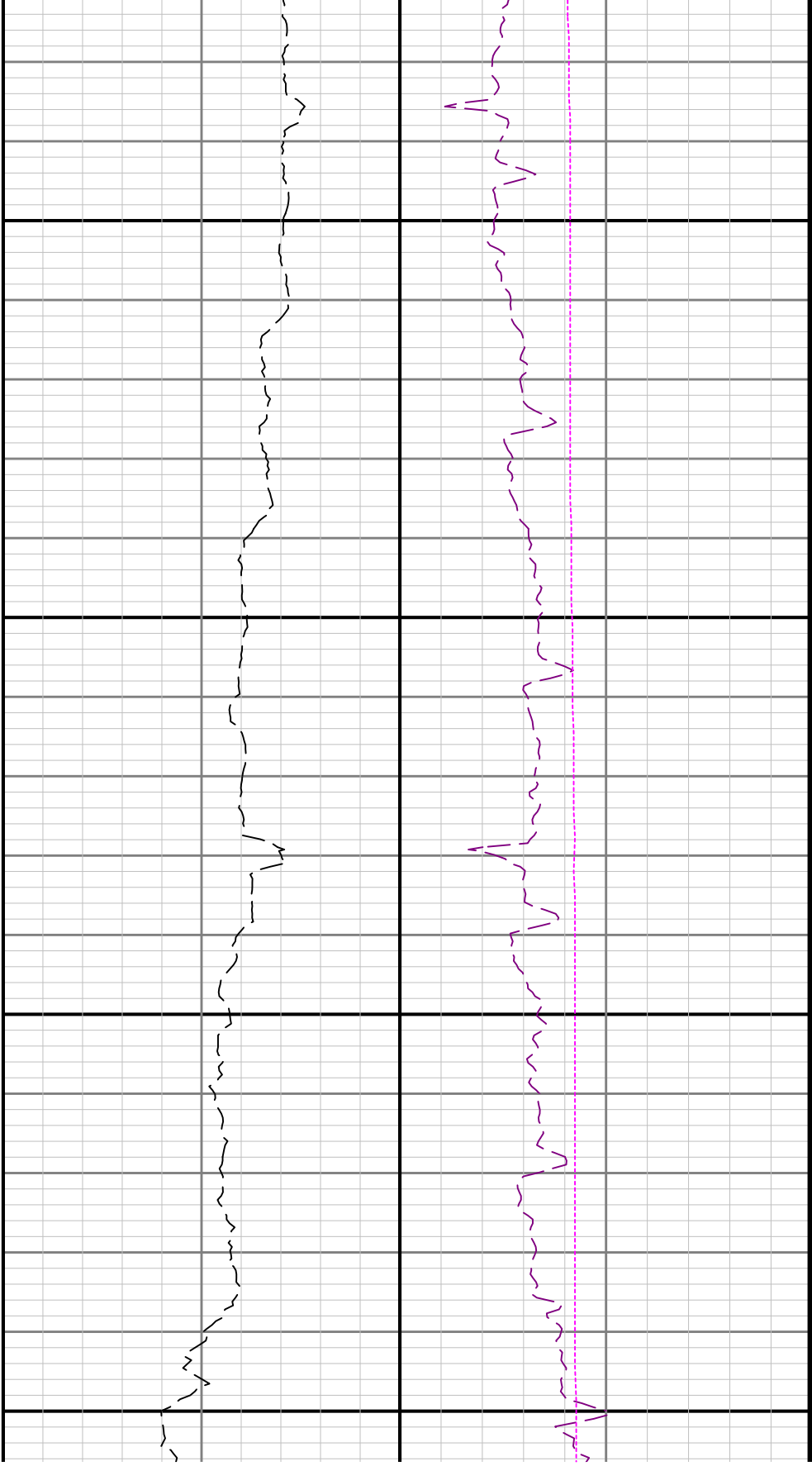




2200

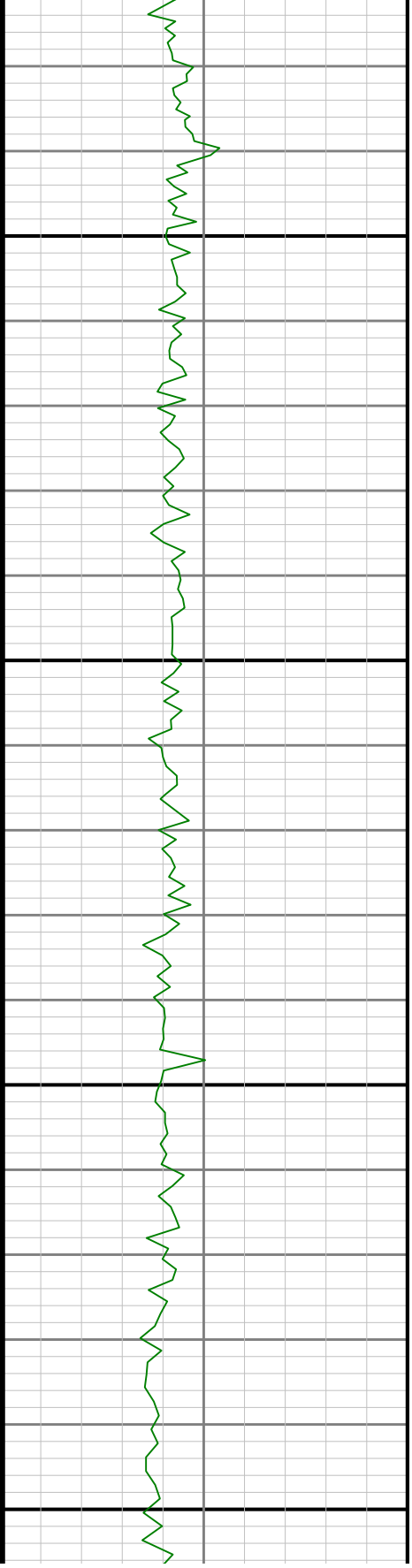


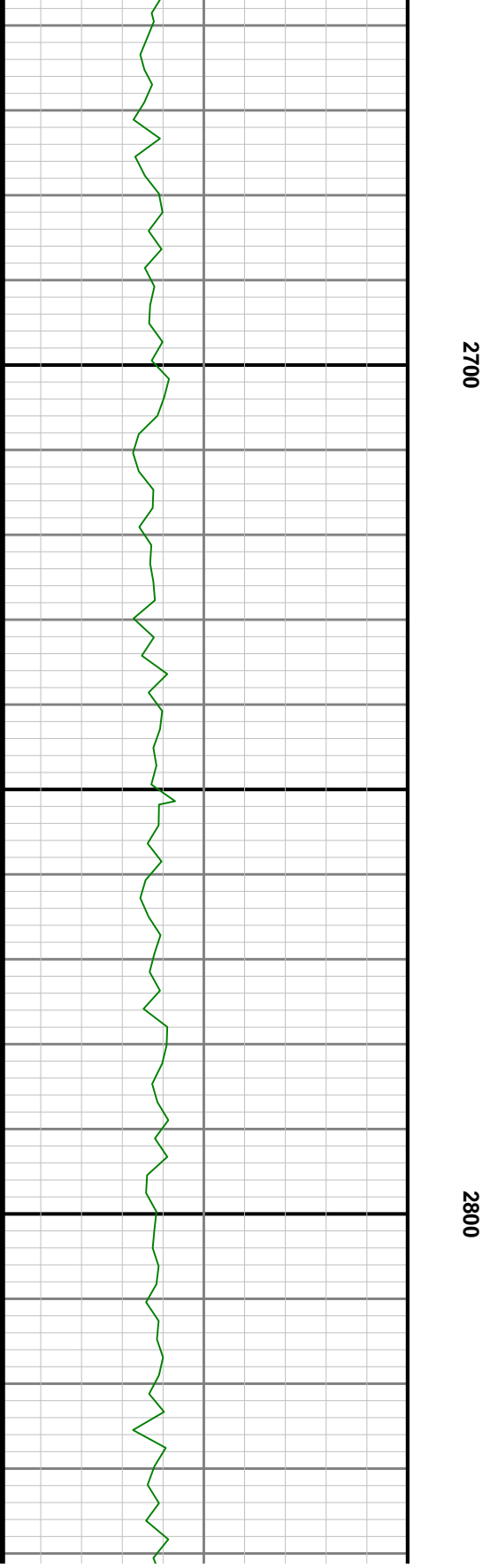
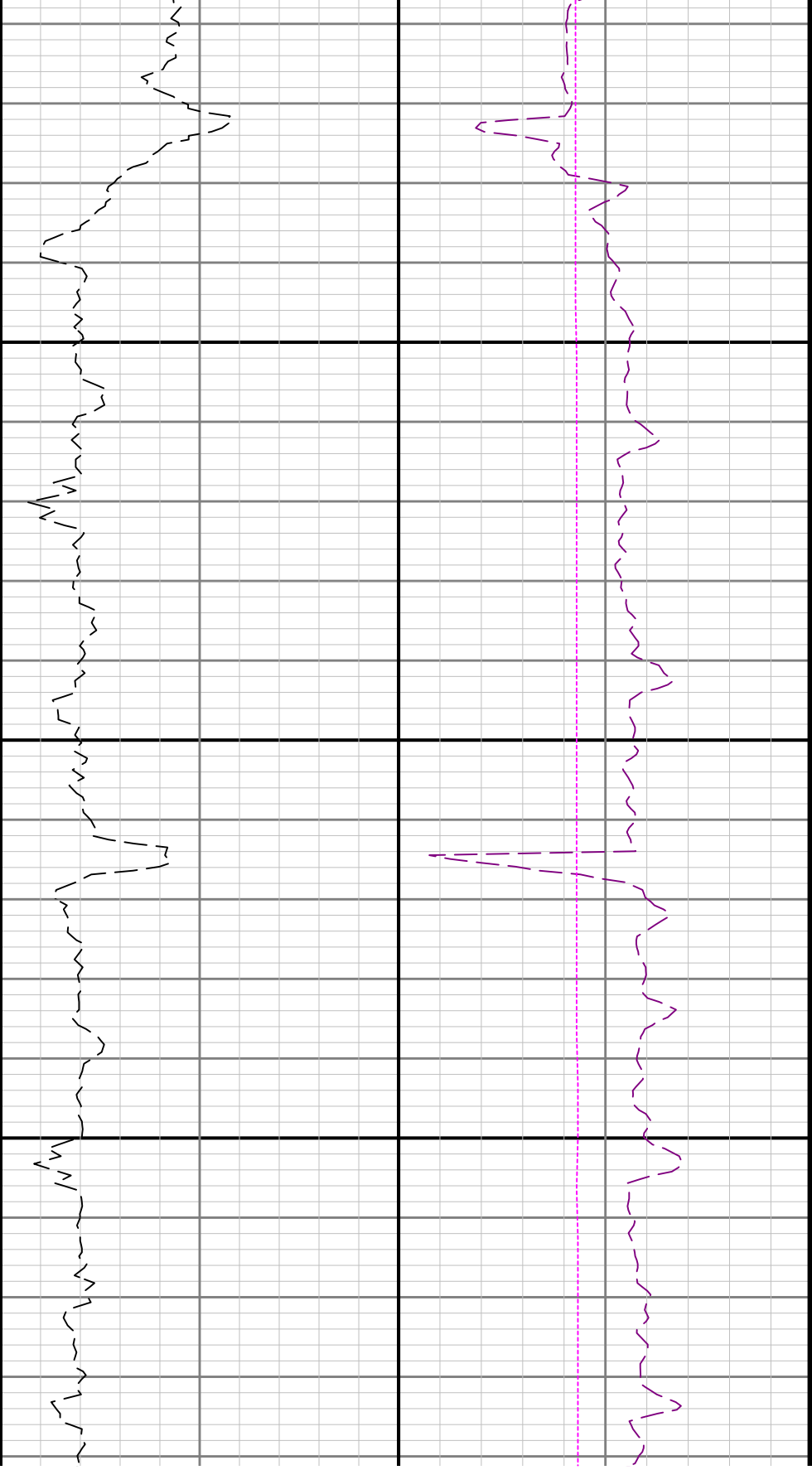


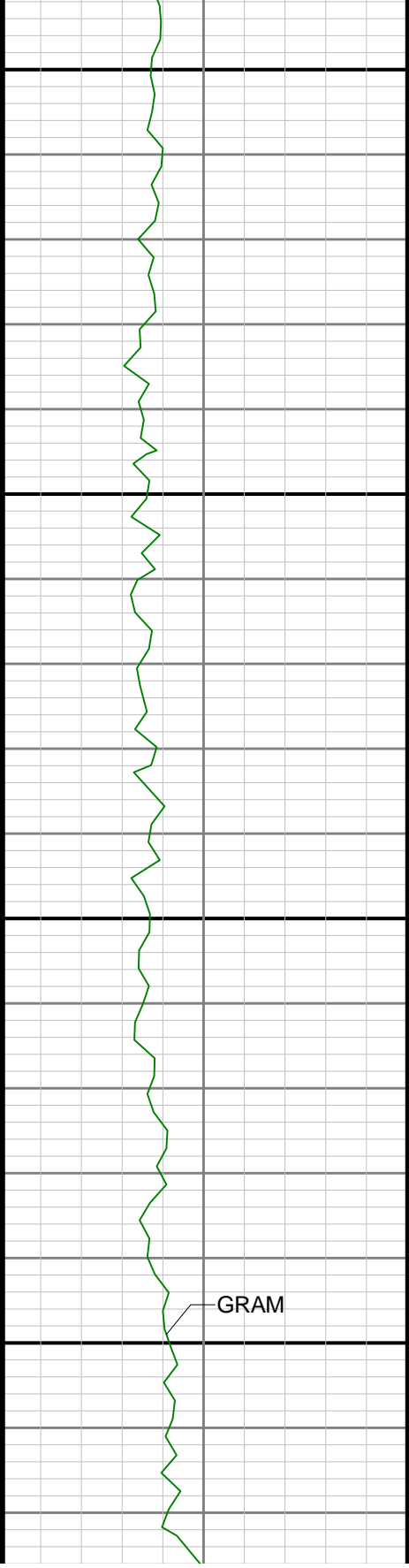


2500

2600

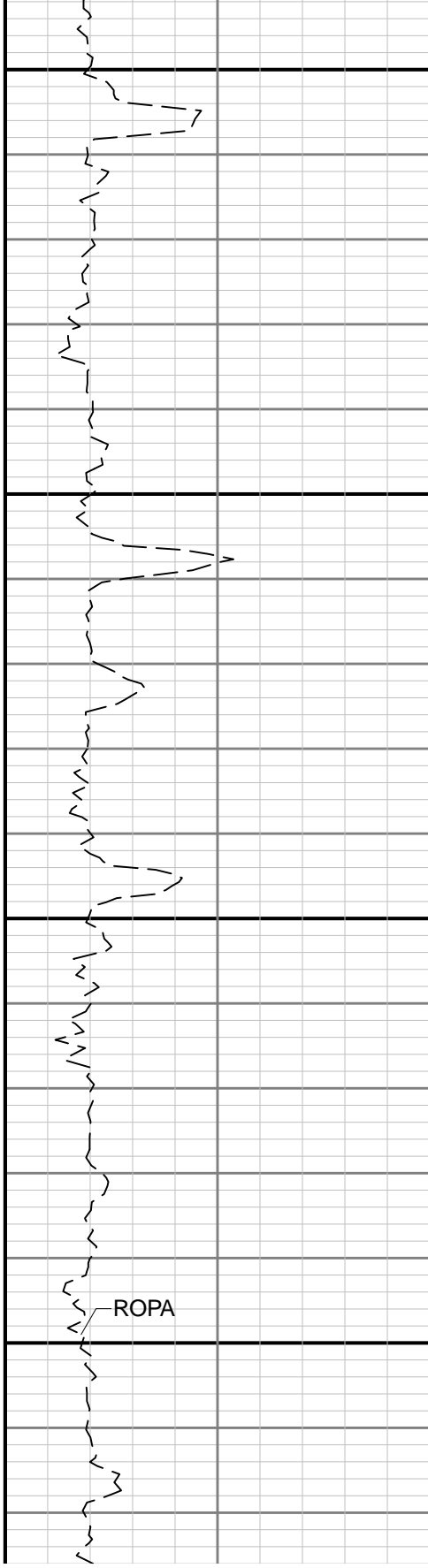




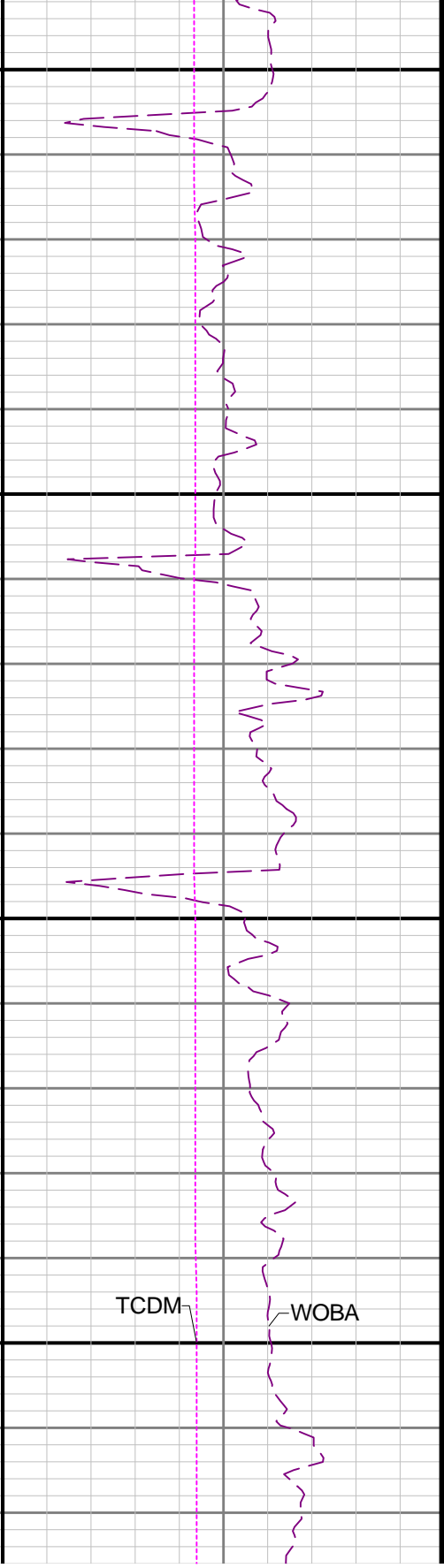


2900

3000

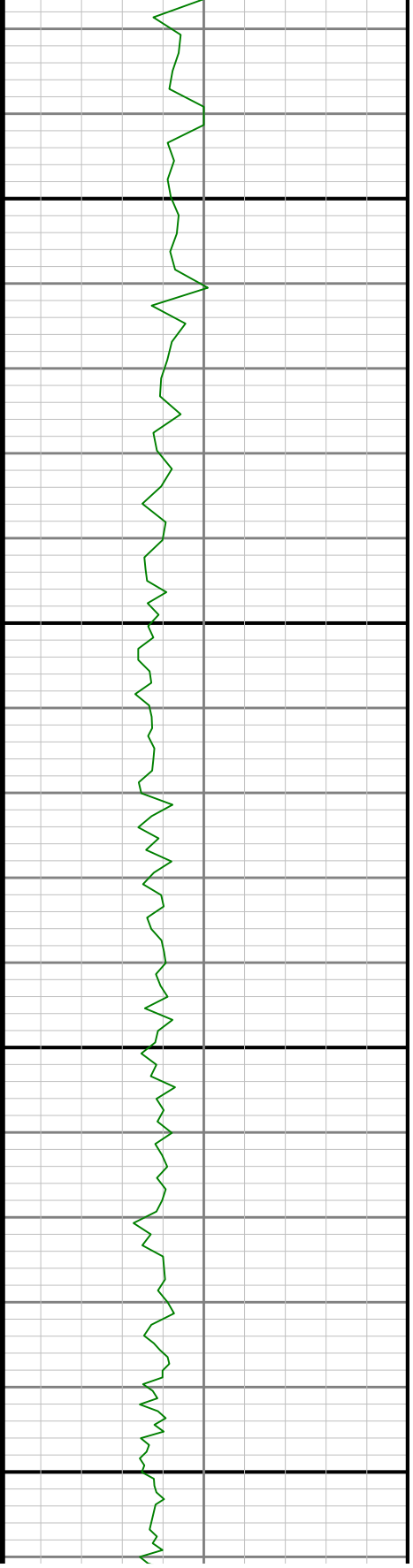
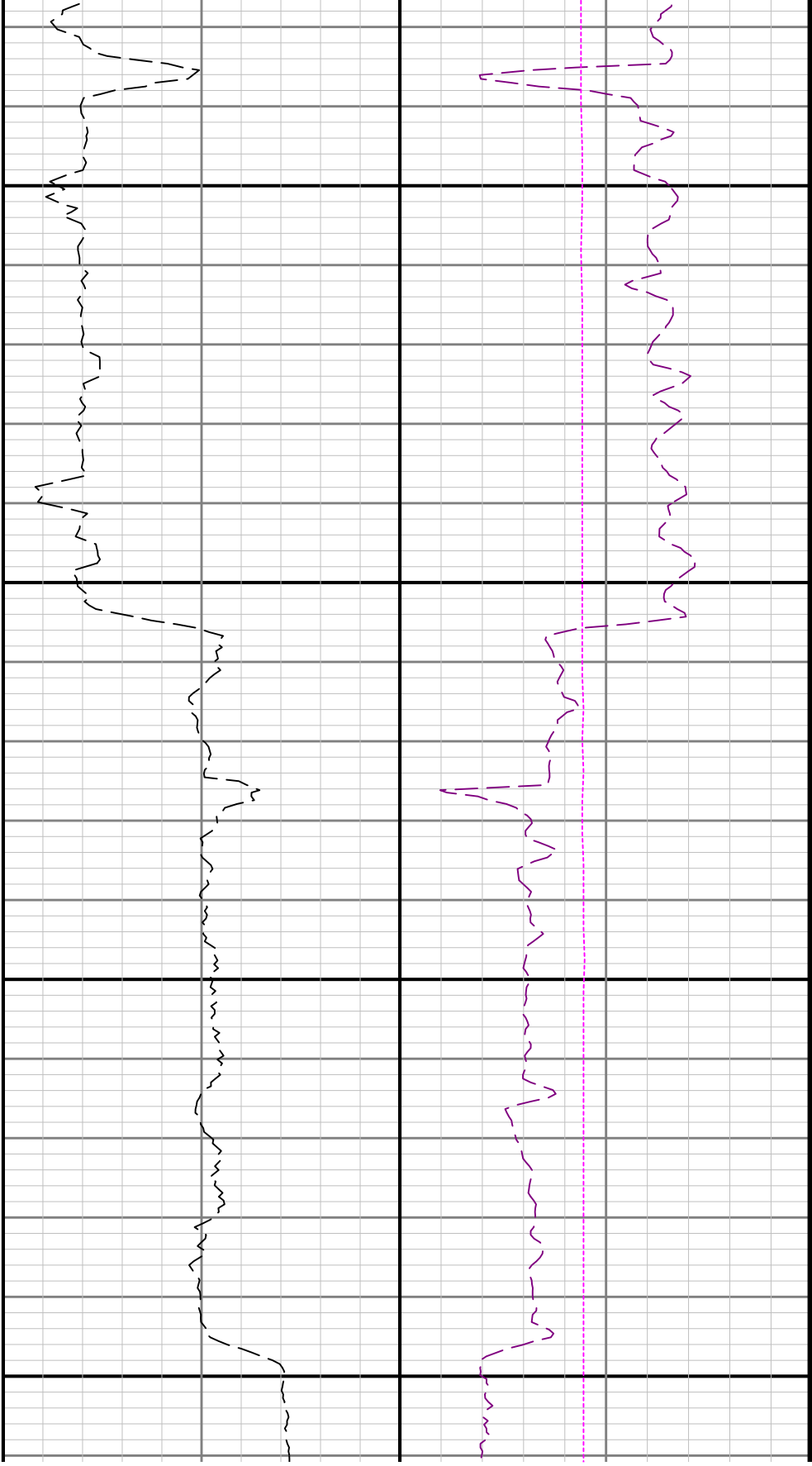


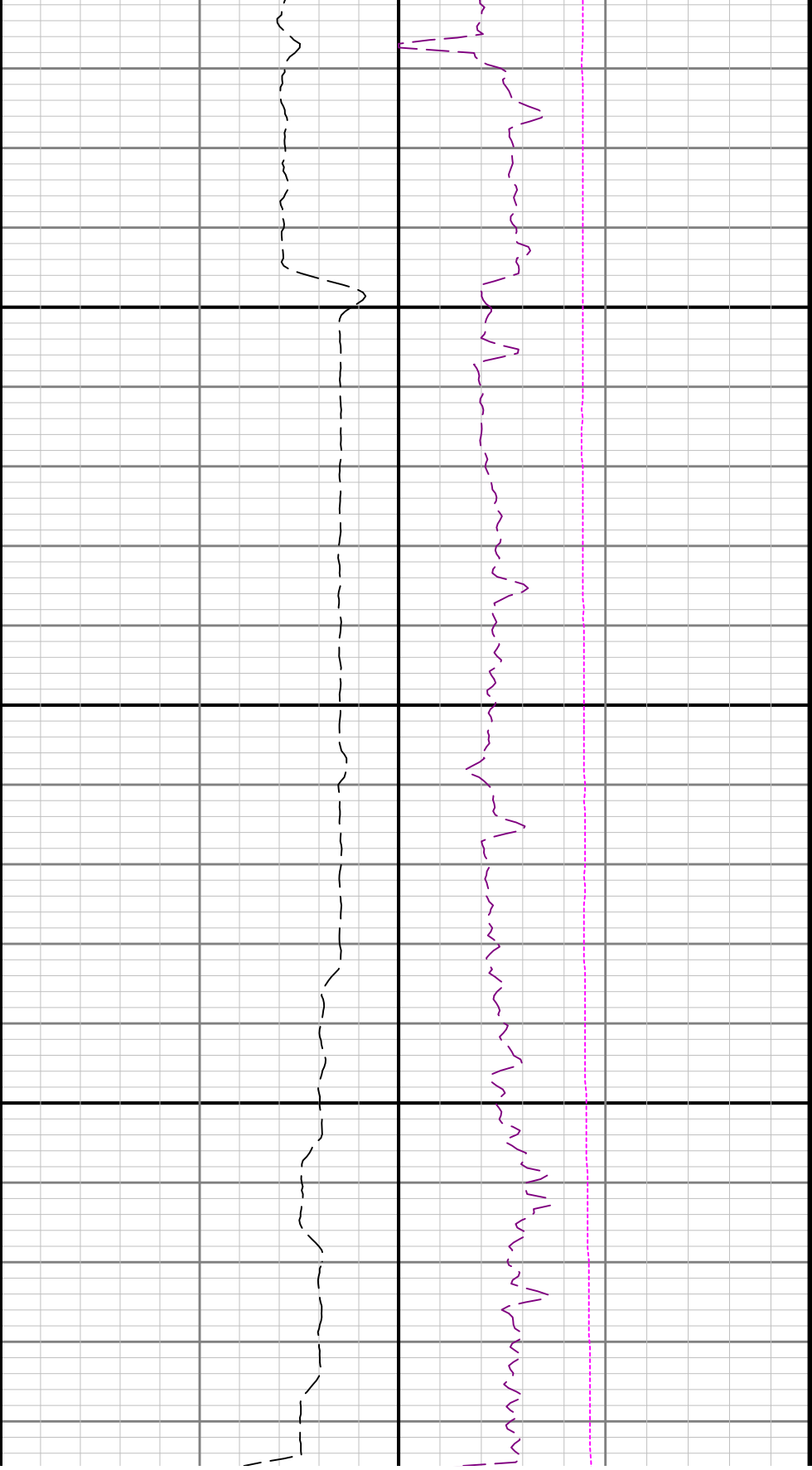
ROPA



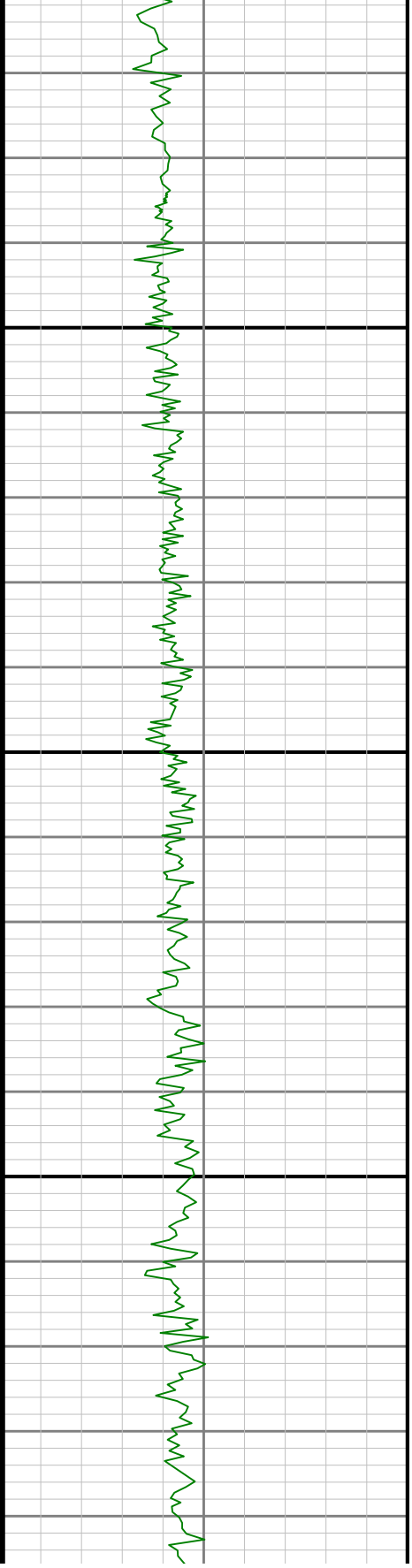
TCDM

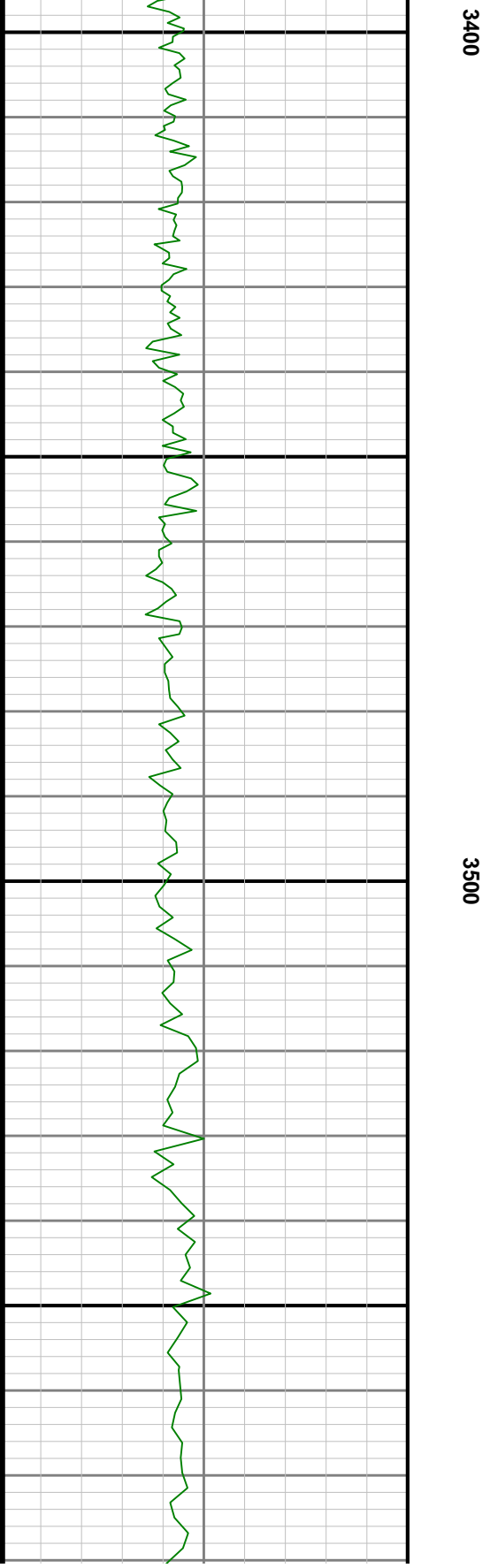
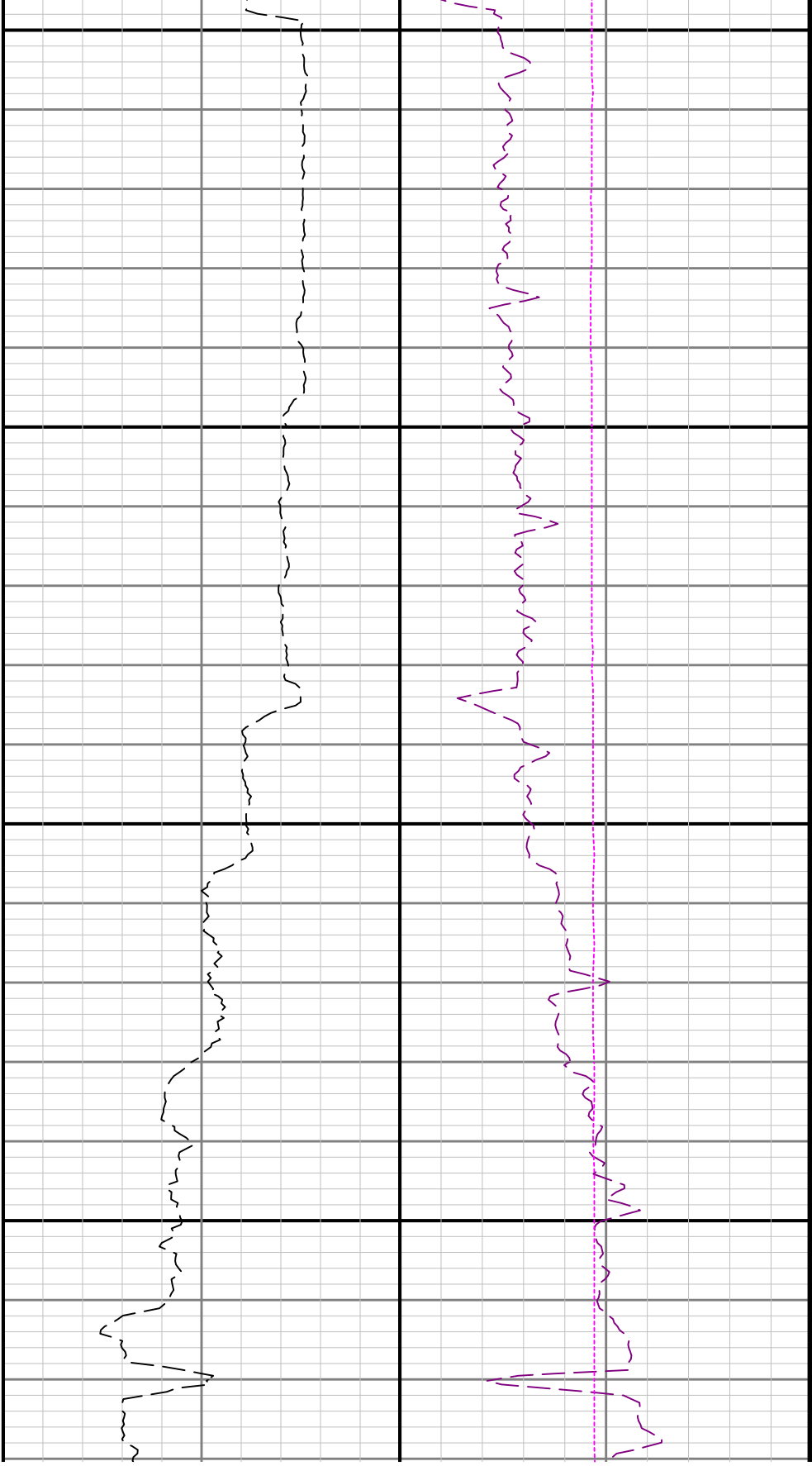
WOBA

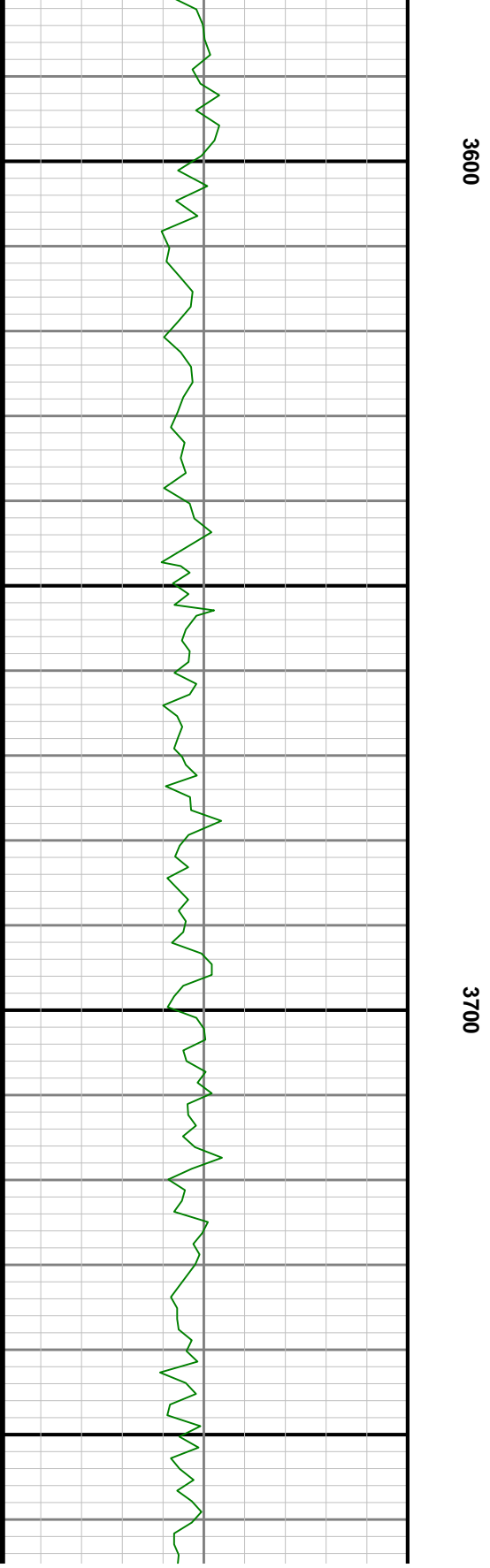
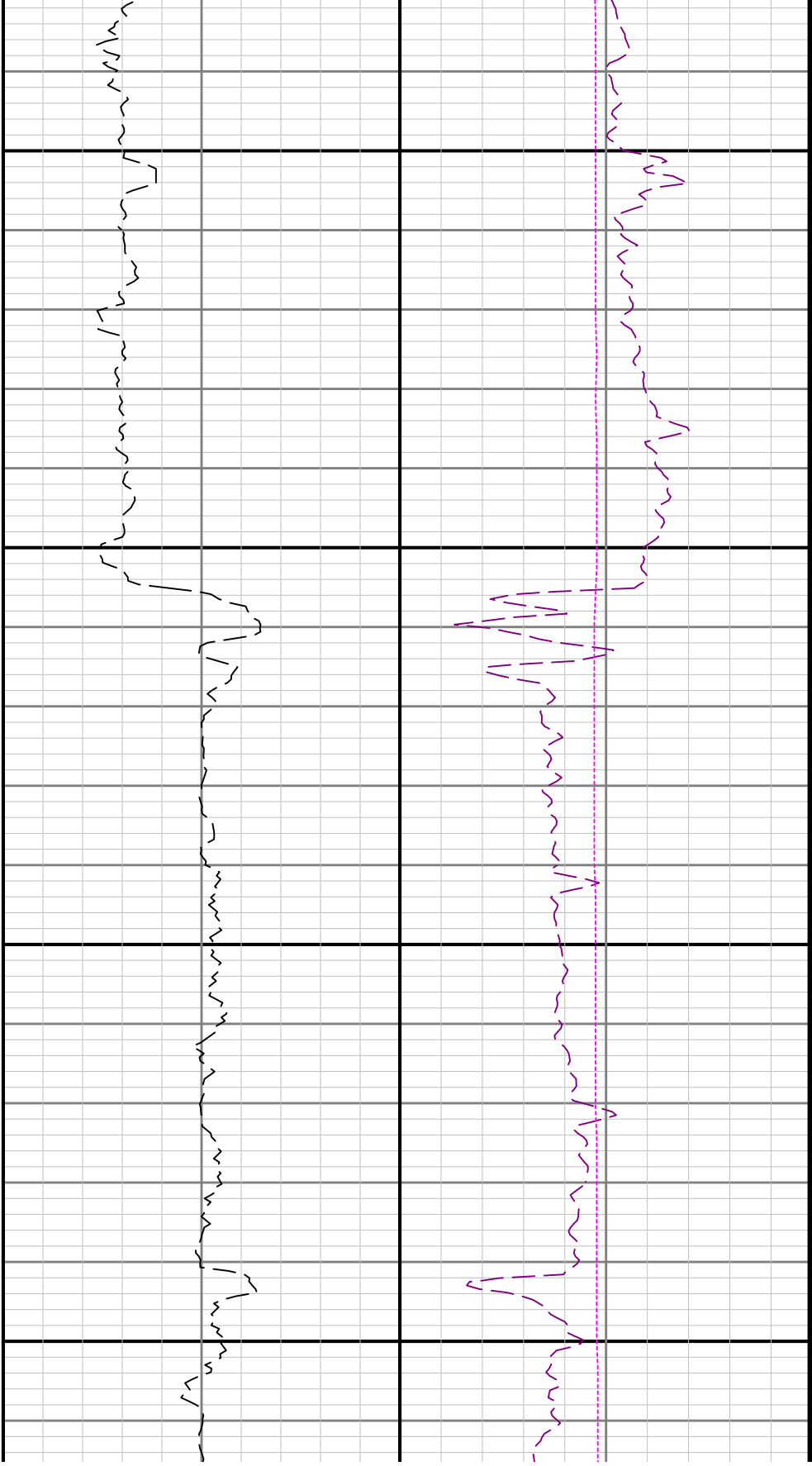


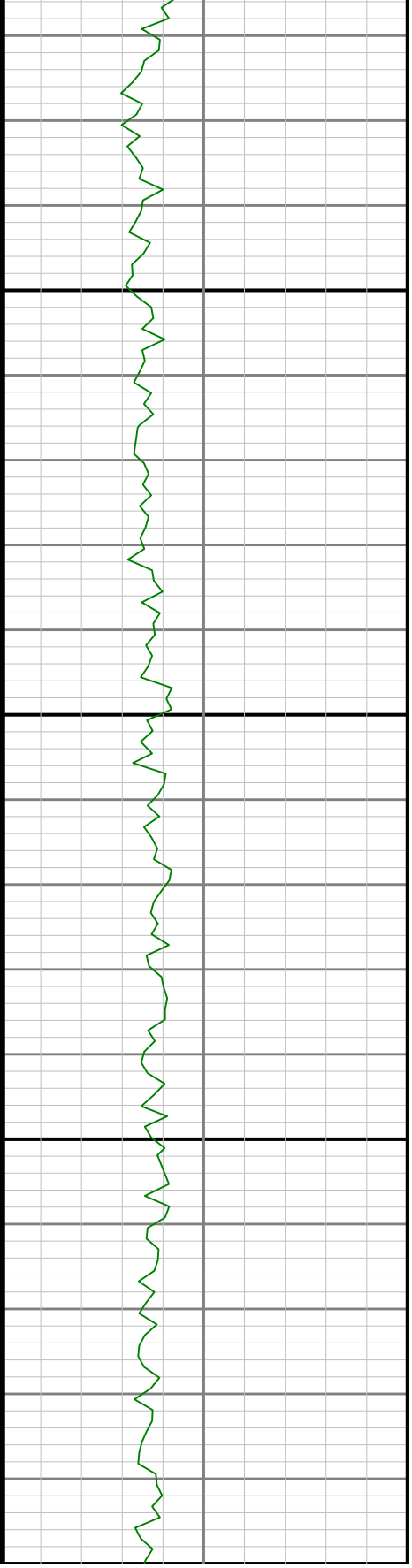
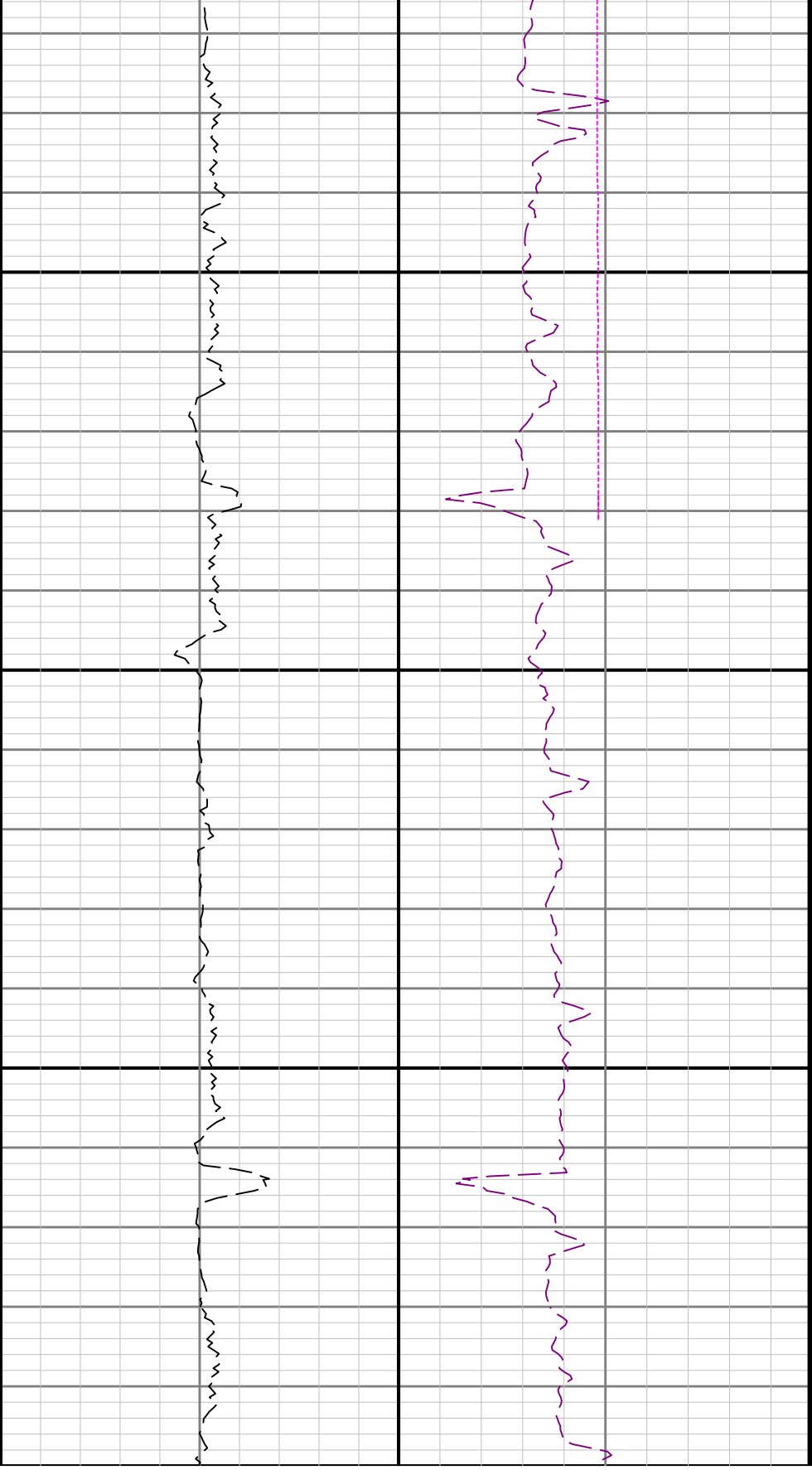


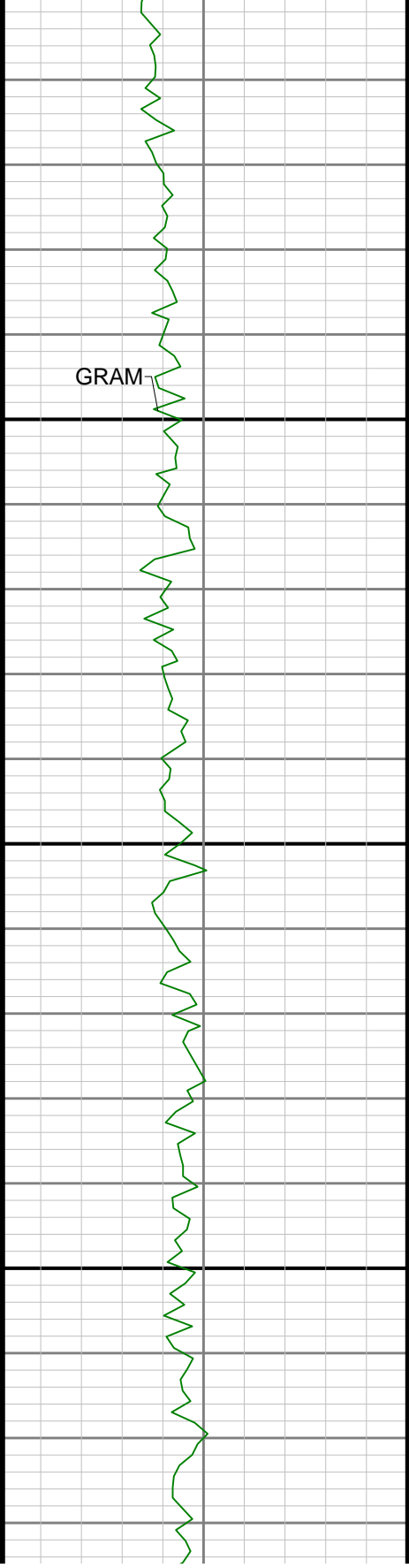
3300





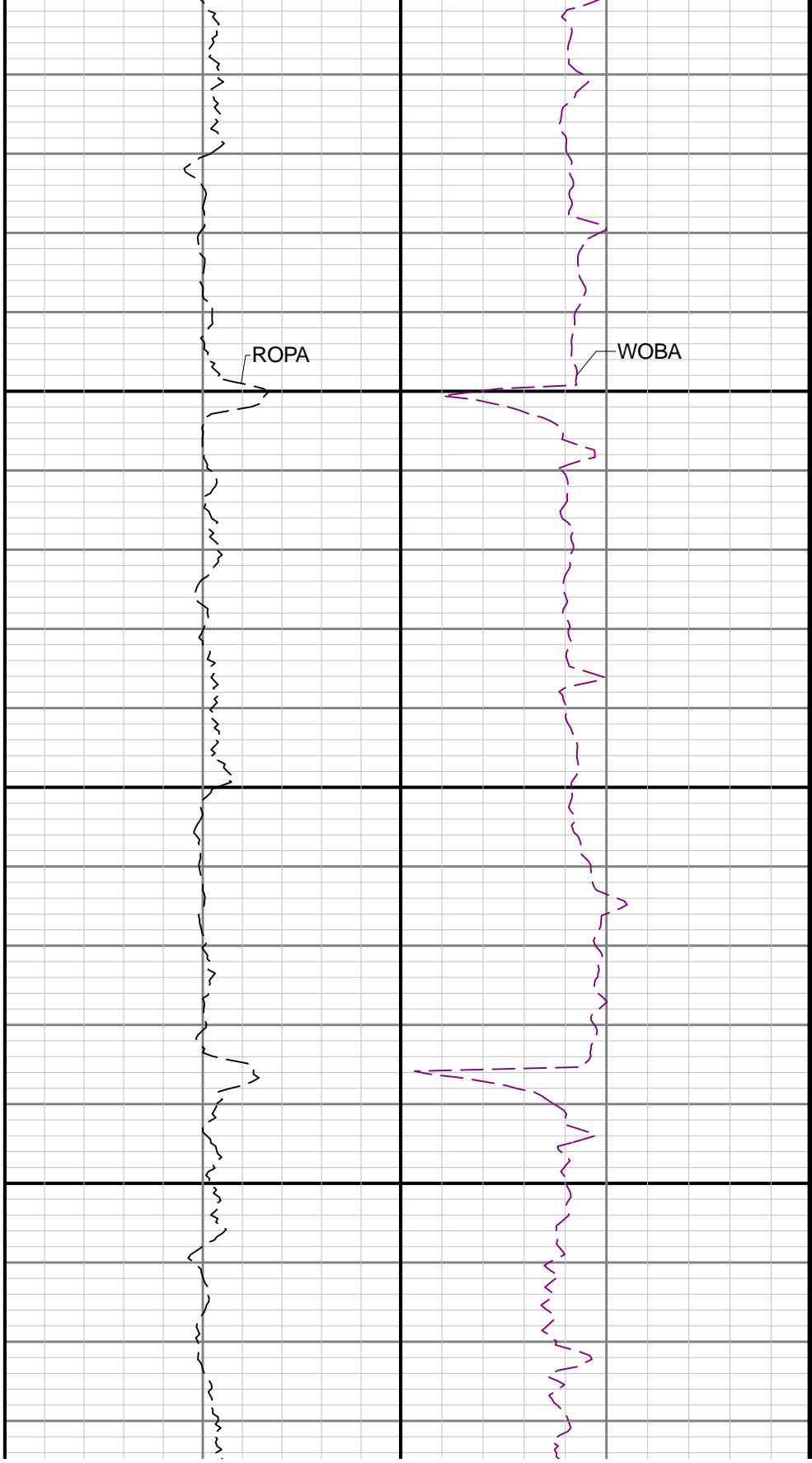


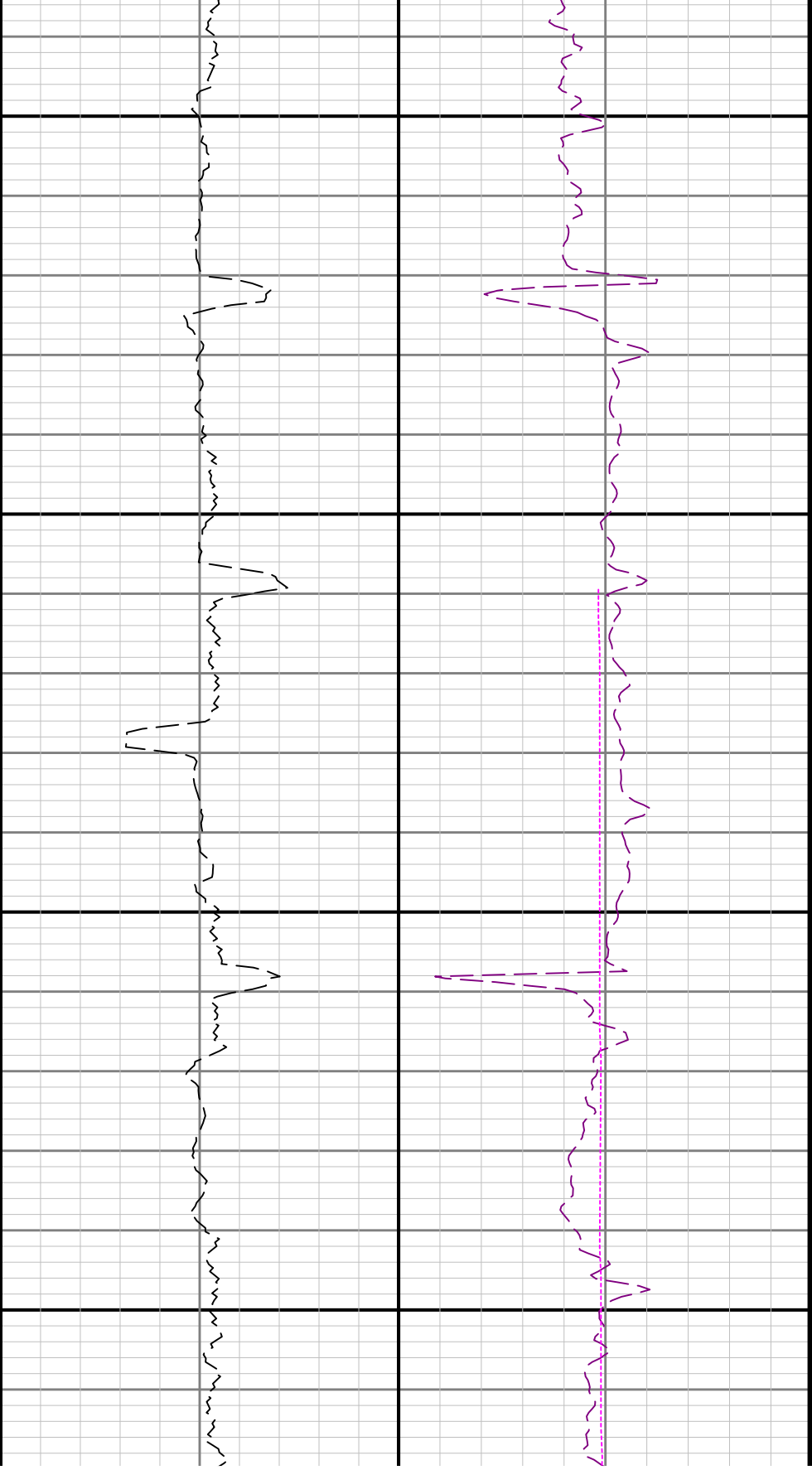




4000

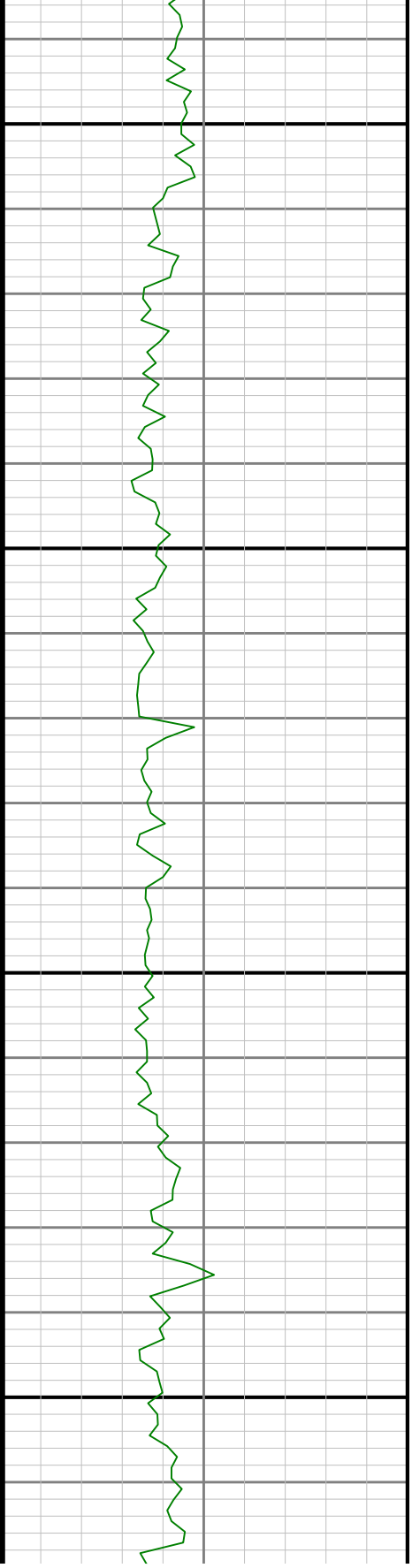
4100

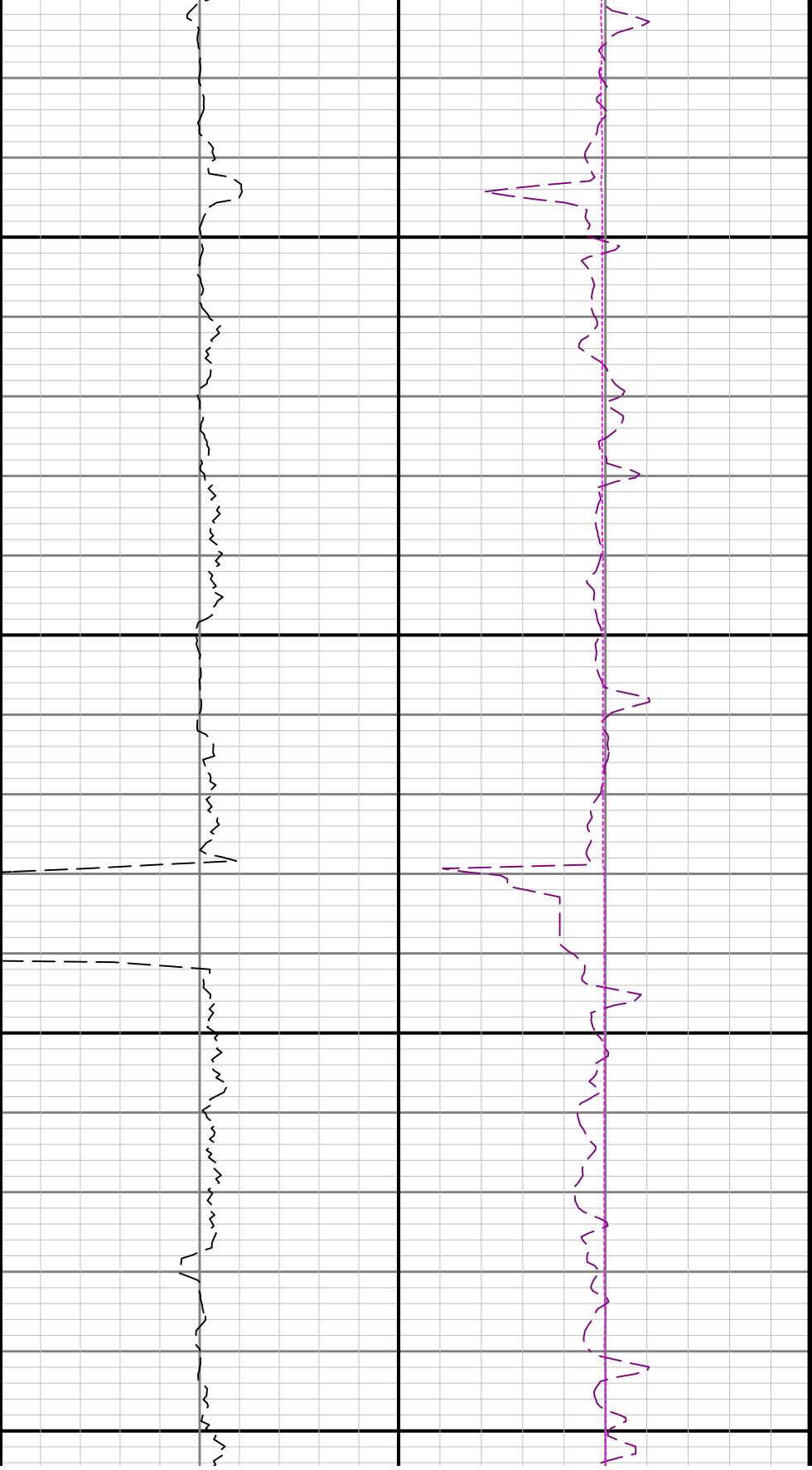




4200

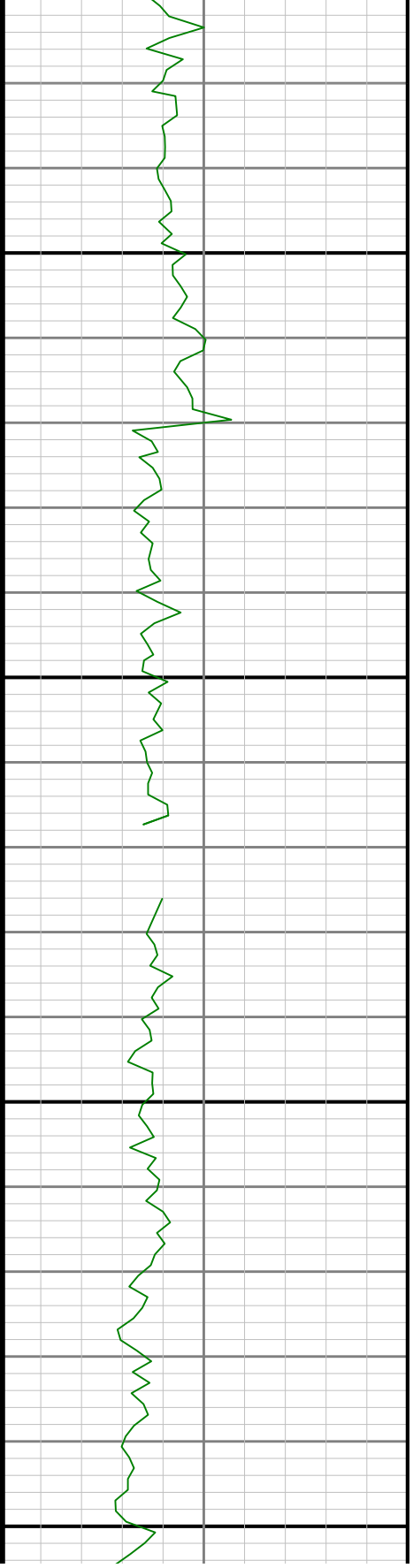
4300

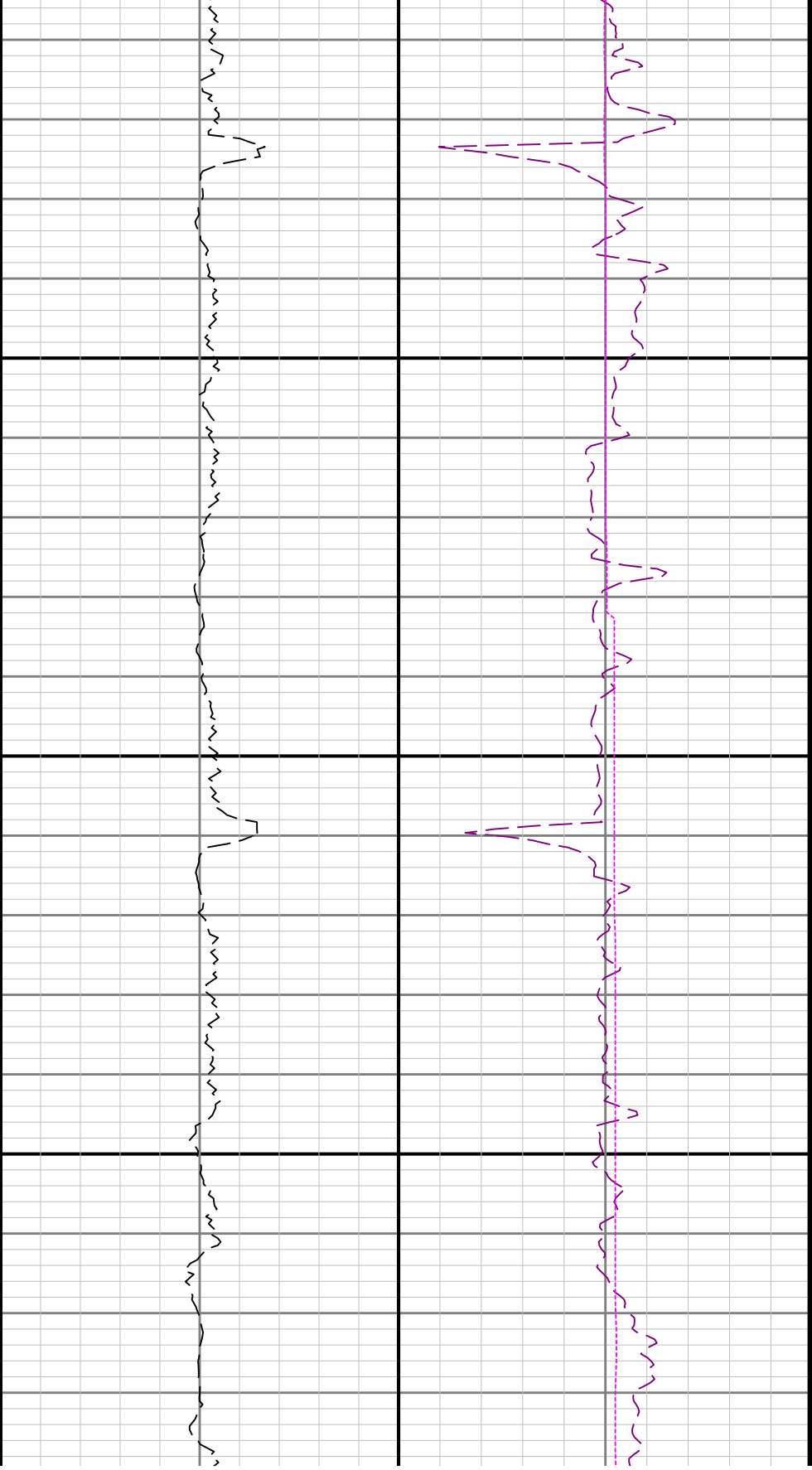




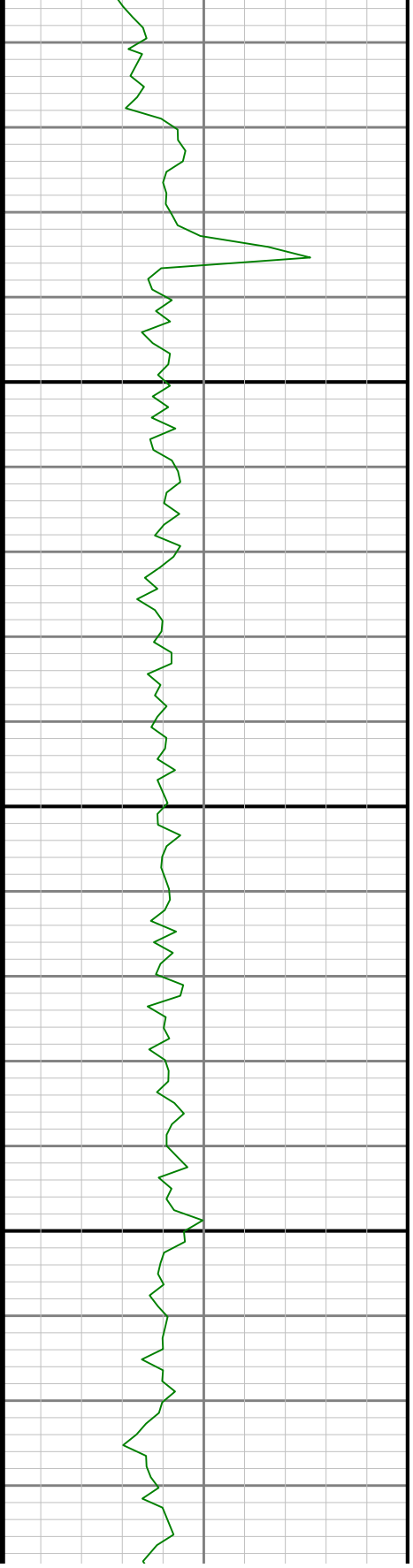
4400

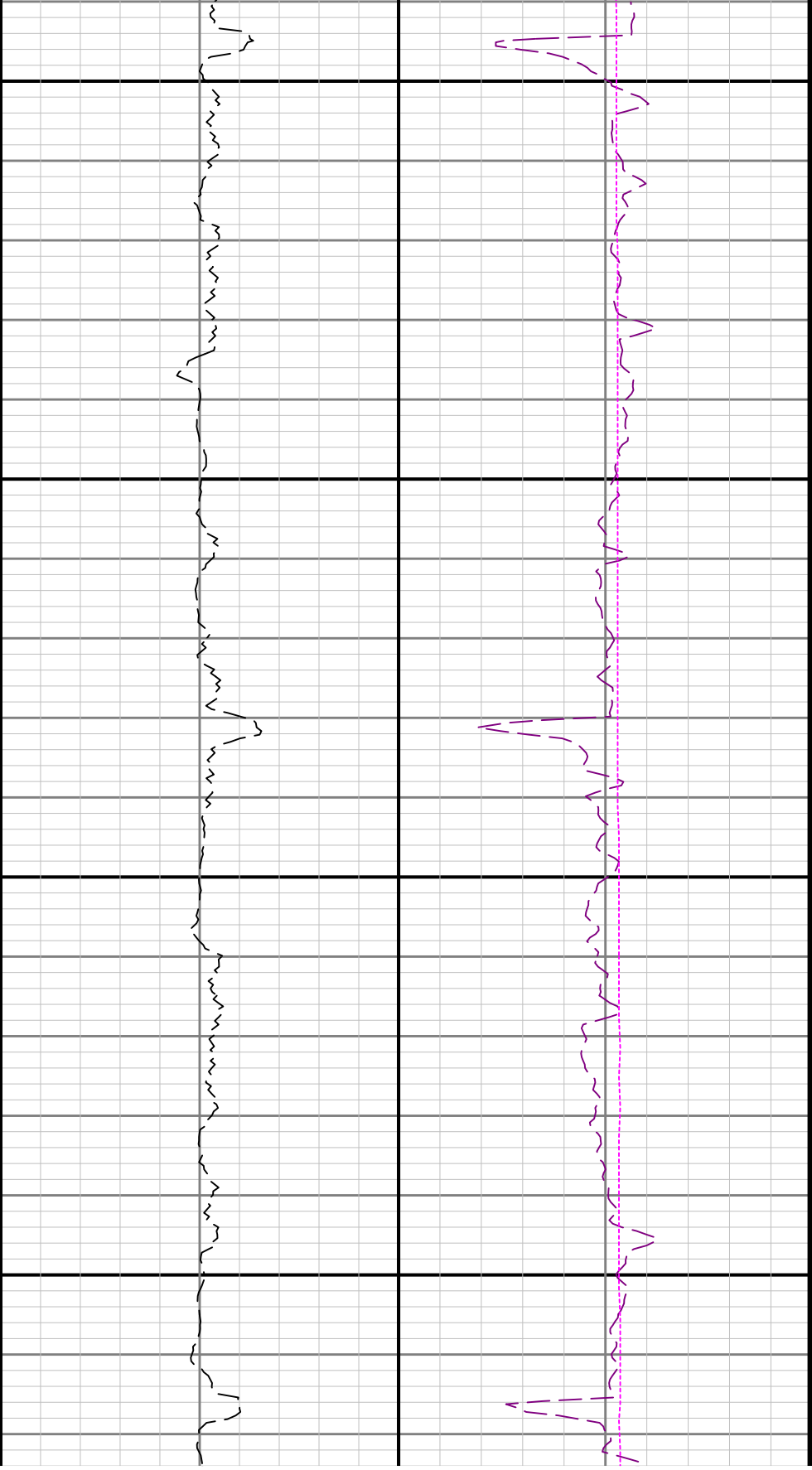
4500





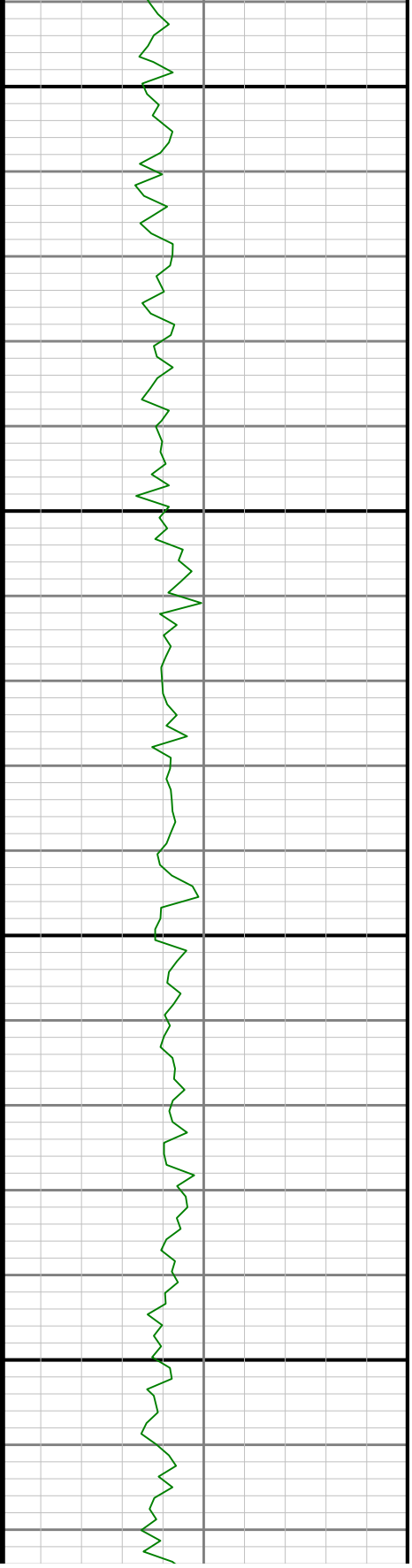
4600

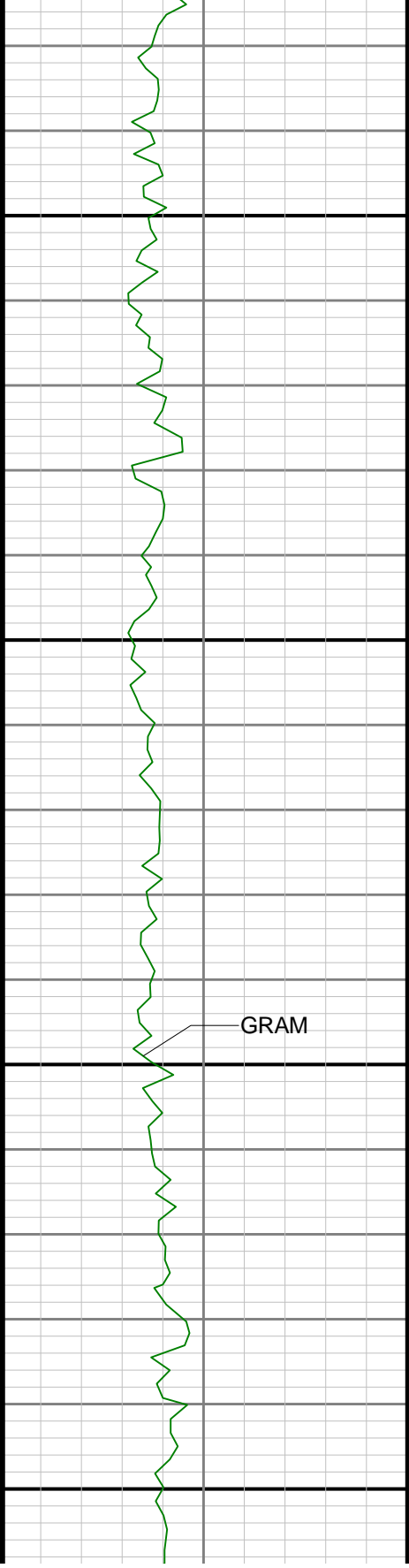




4700

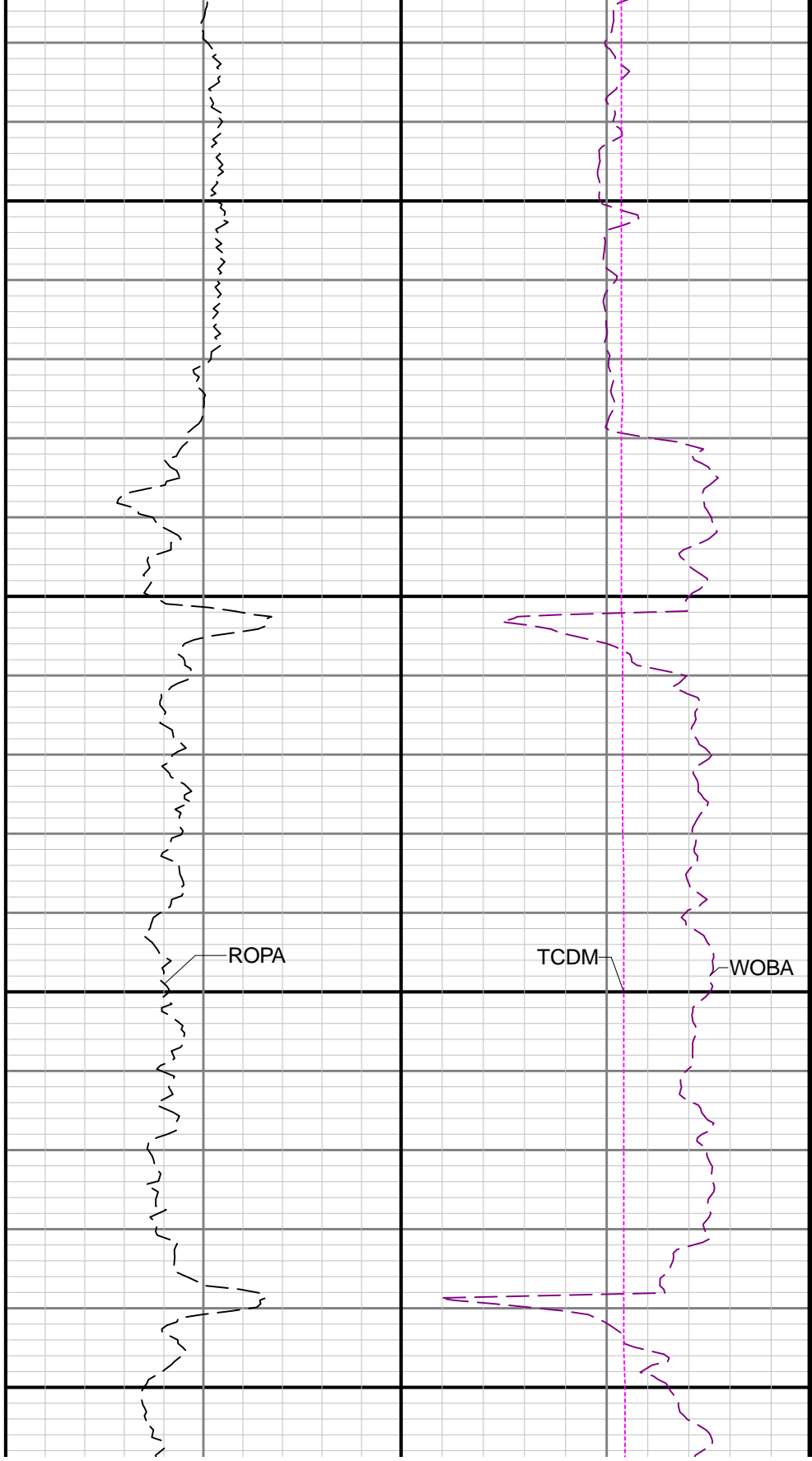
4800

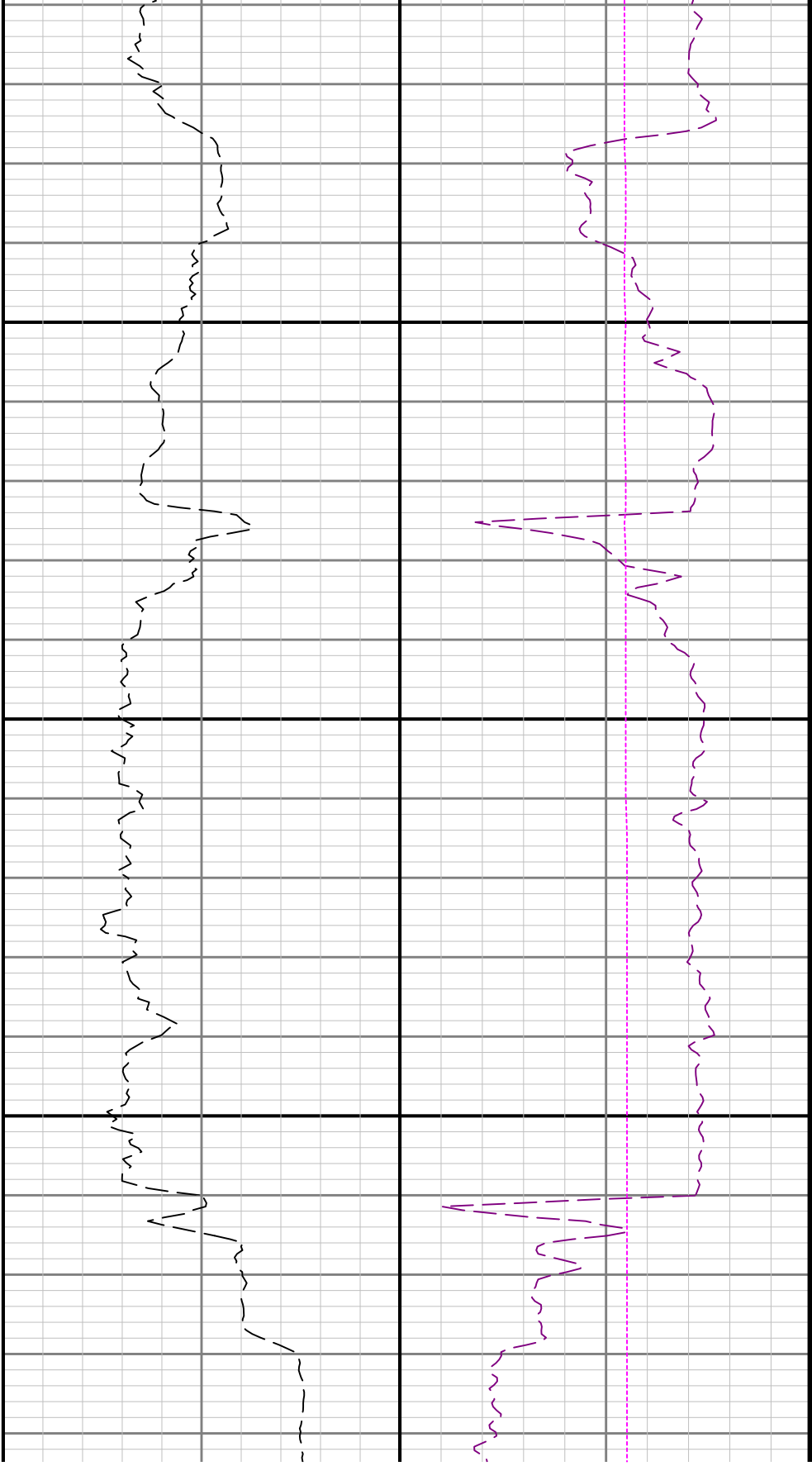




4900

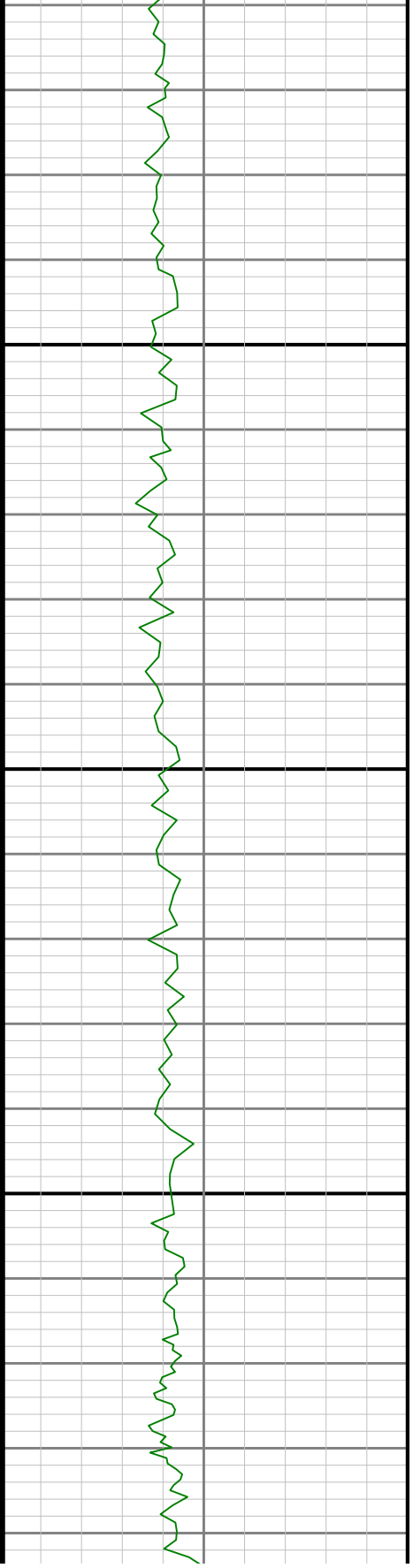
5000

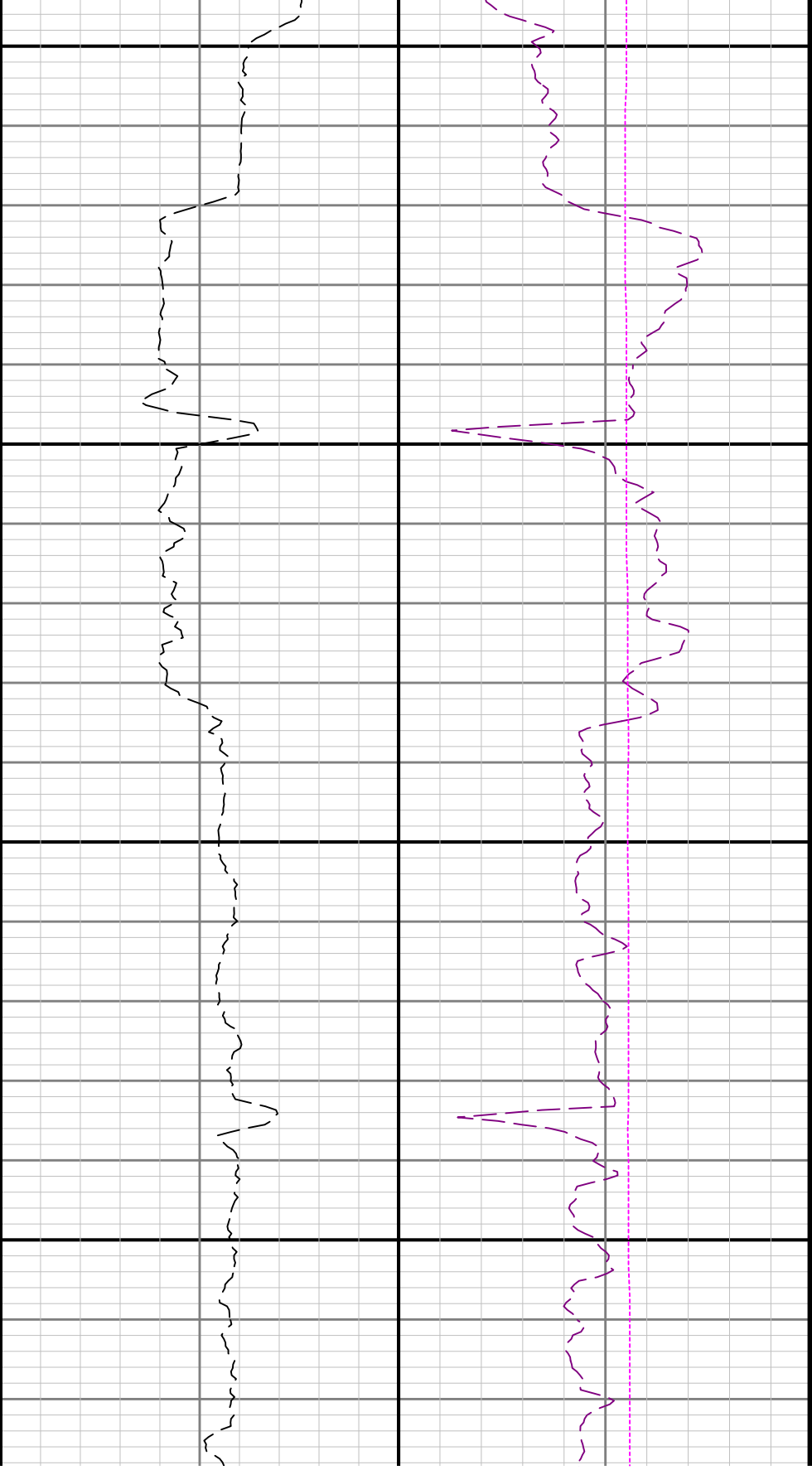




5100

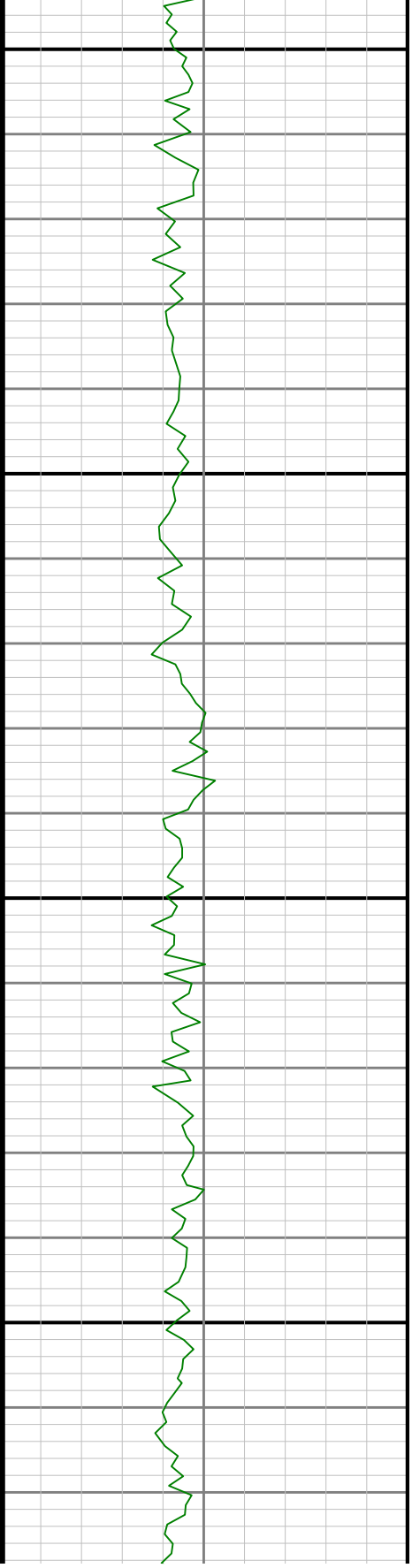
5200

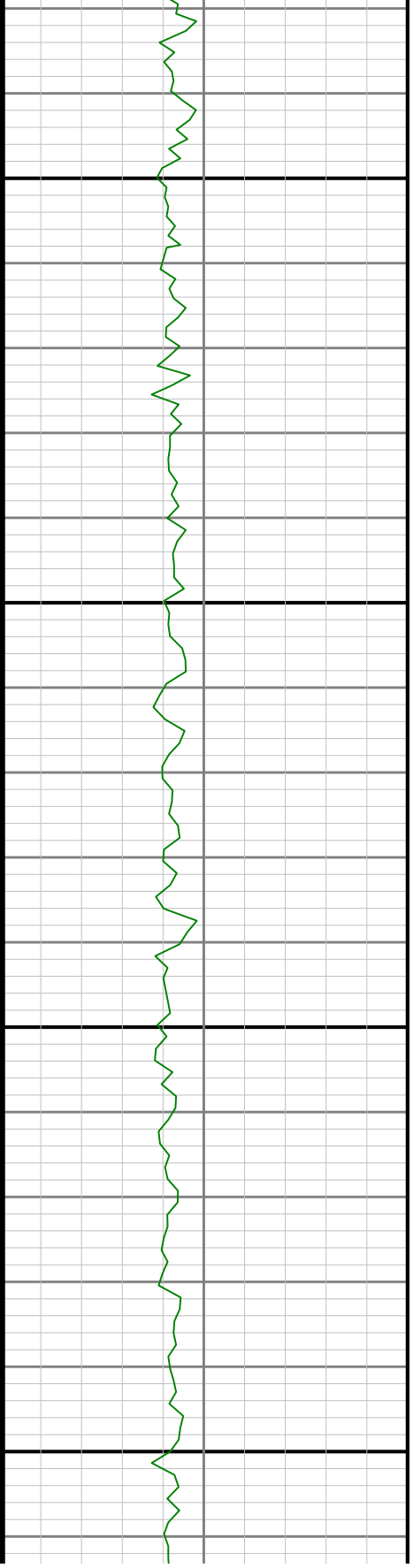
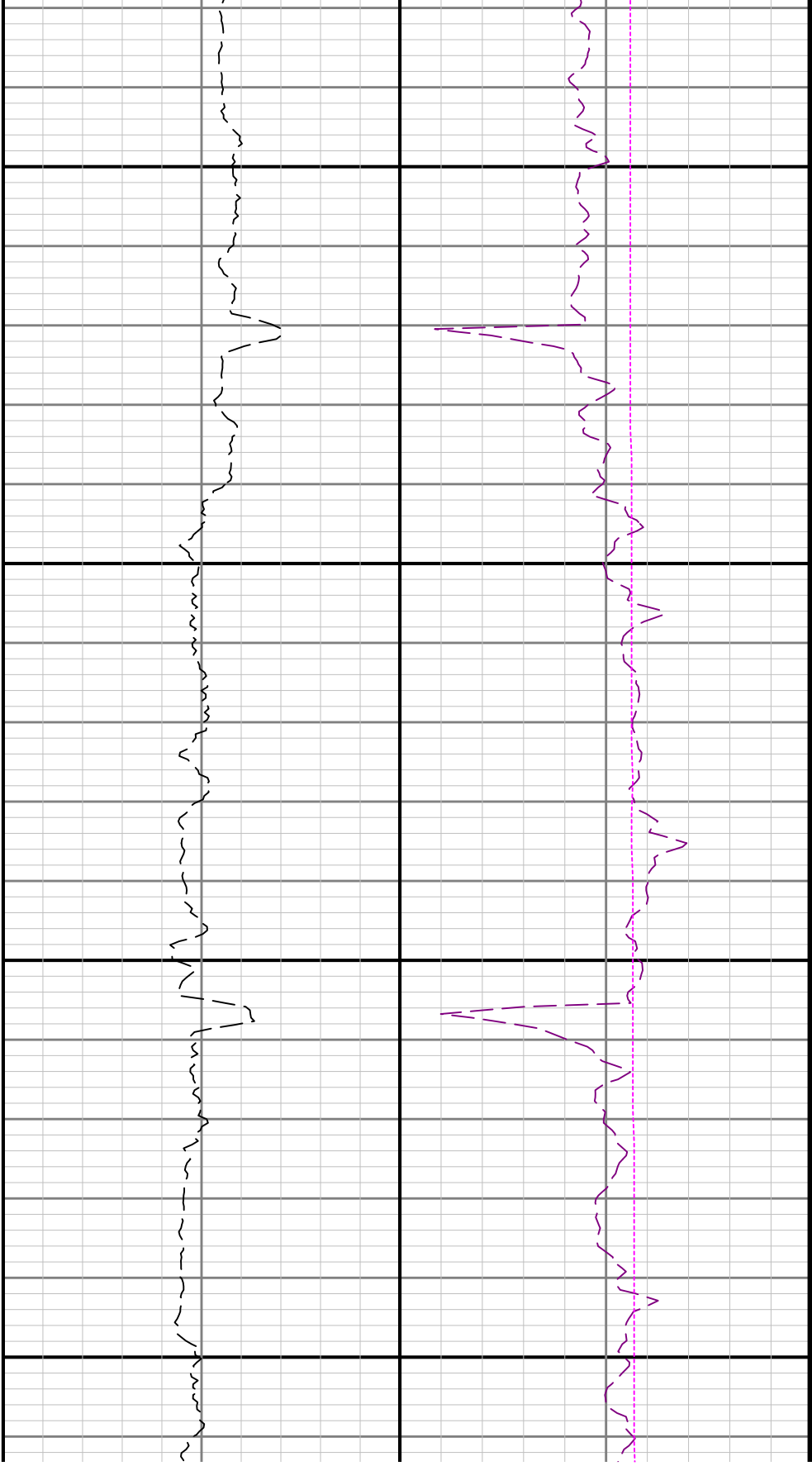


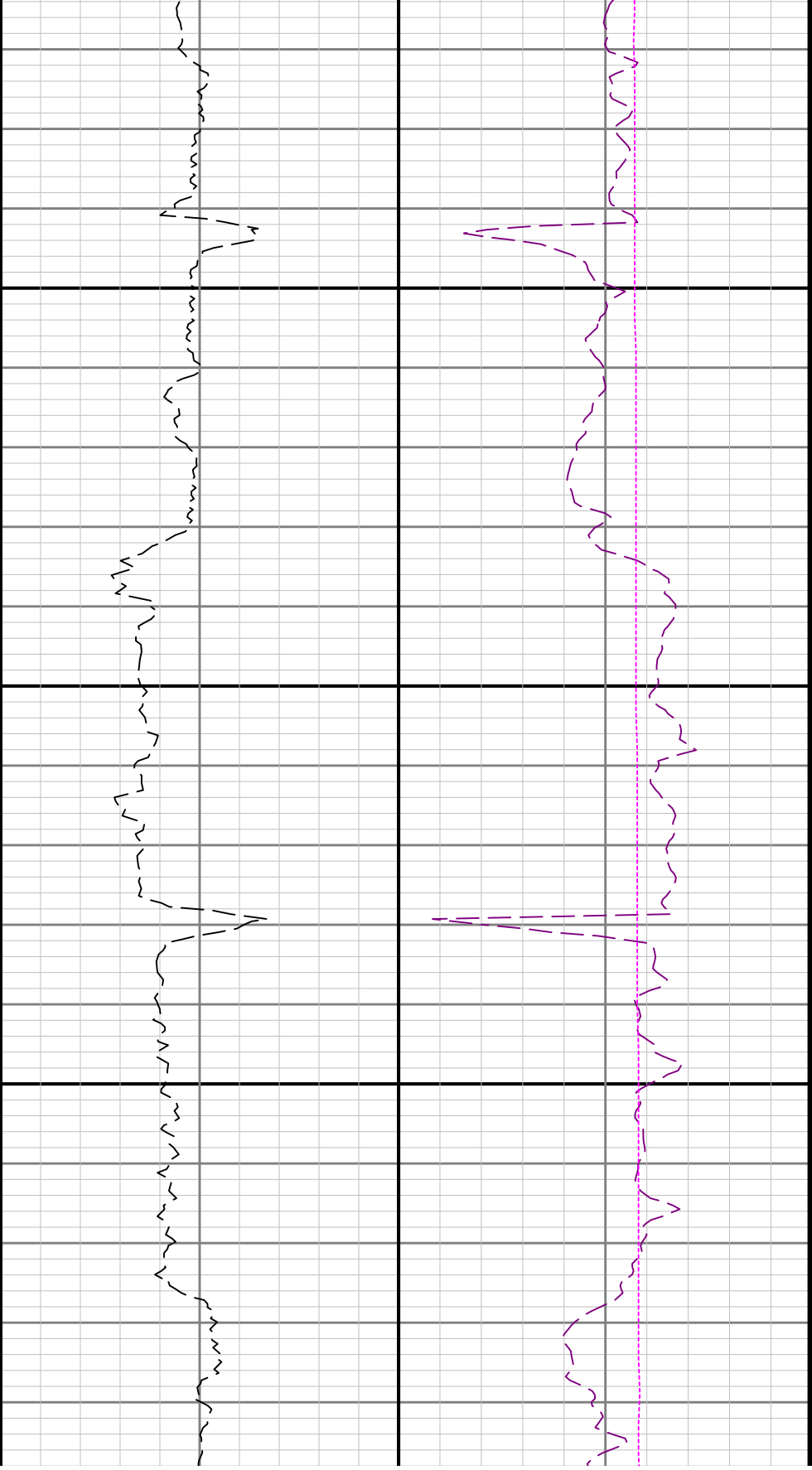


5300

5400







5700

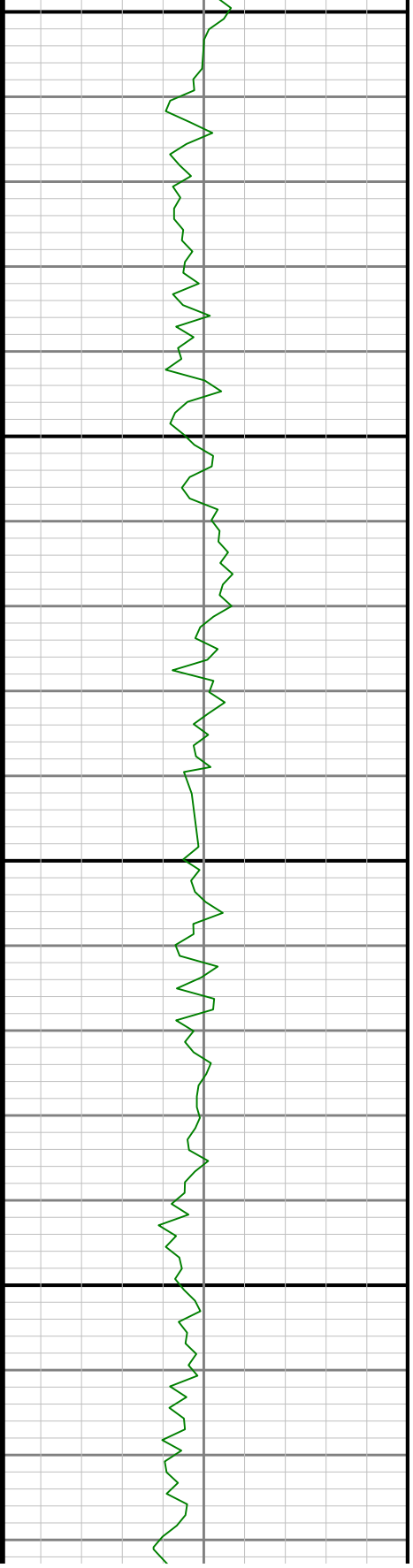
2

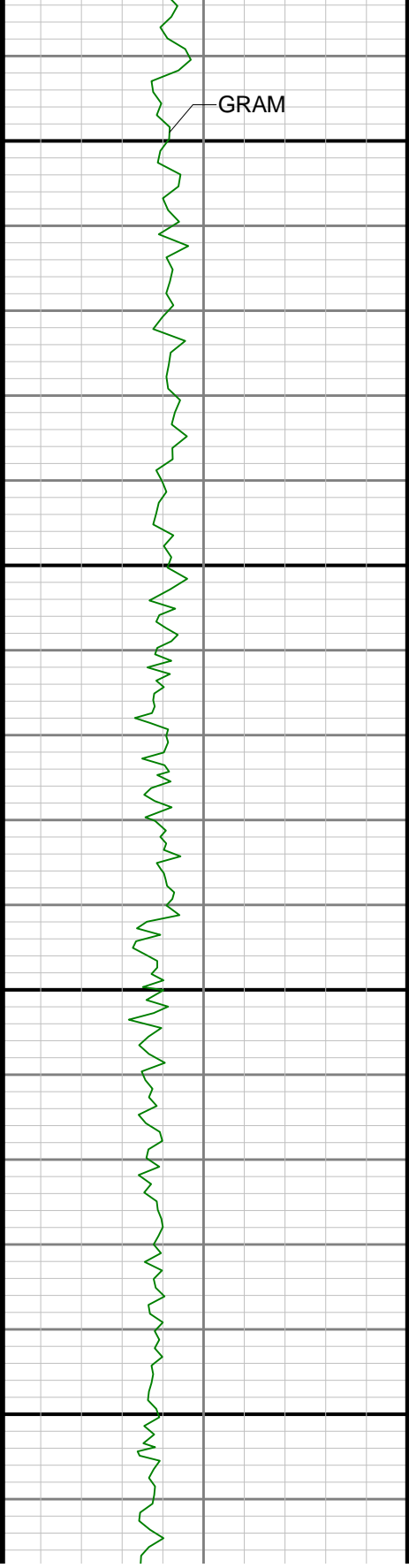




800

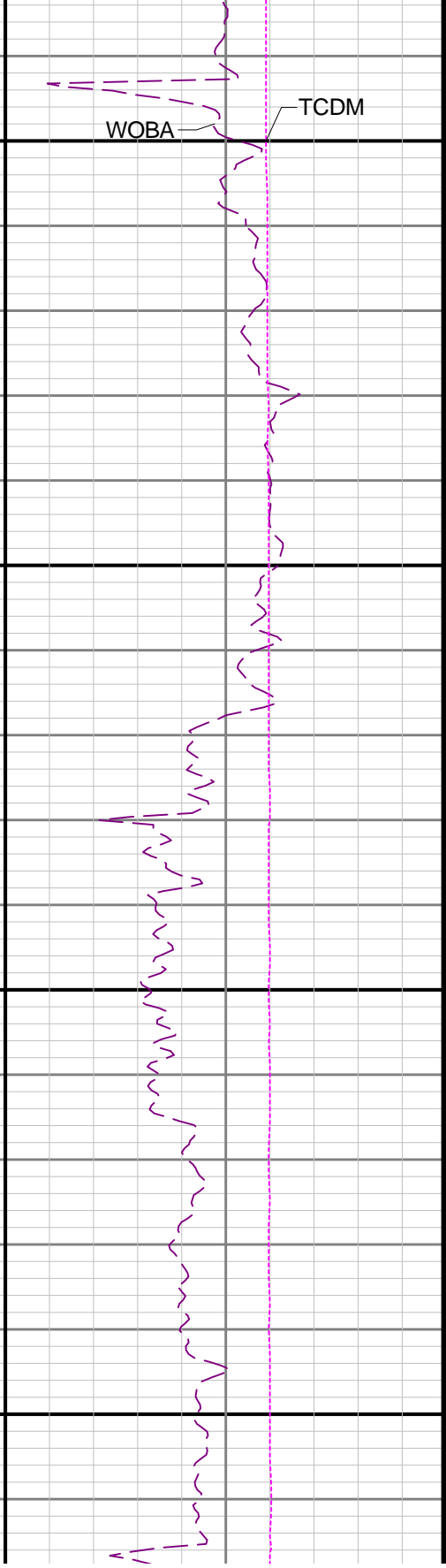
5900

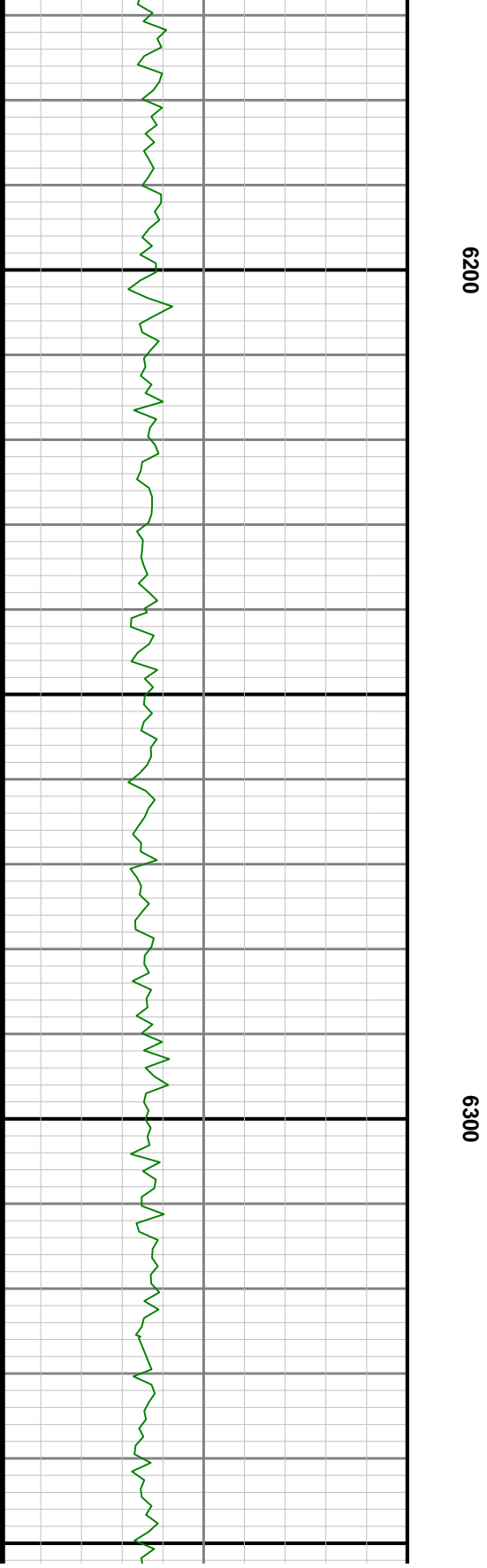
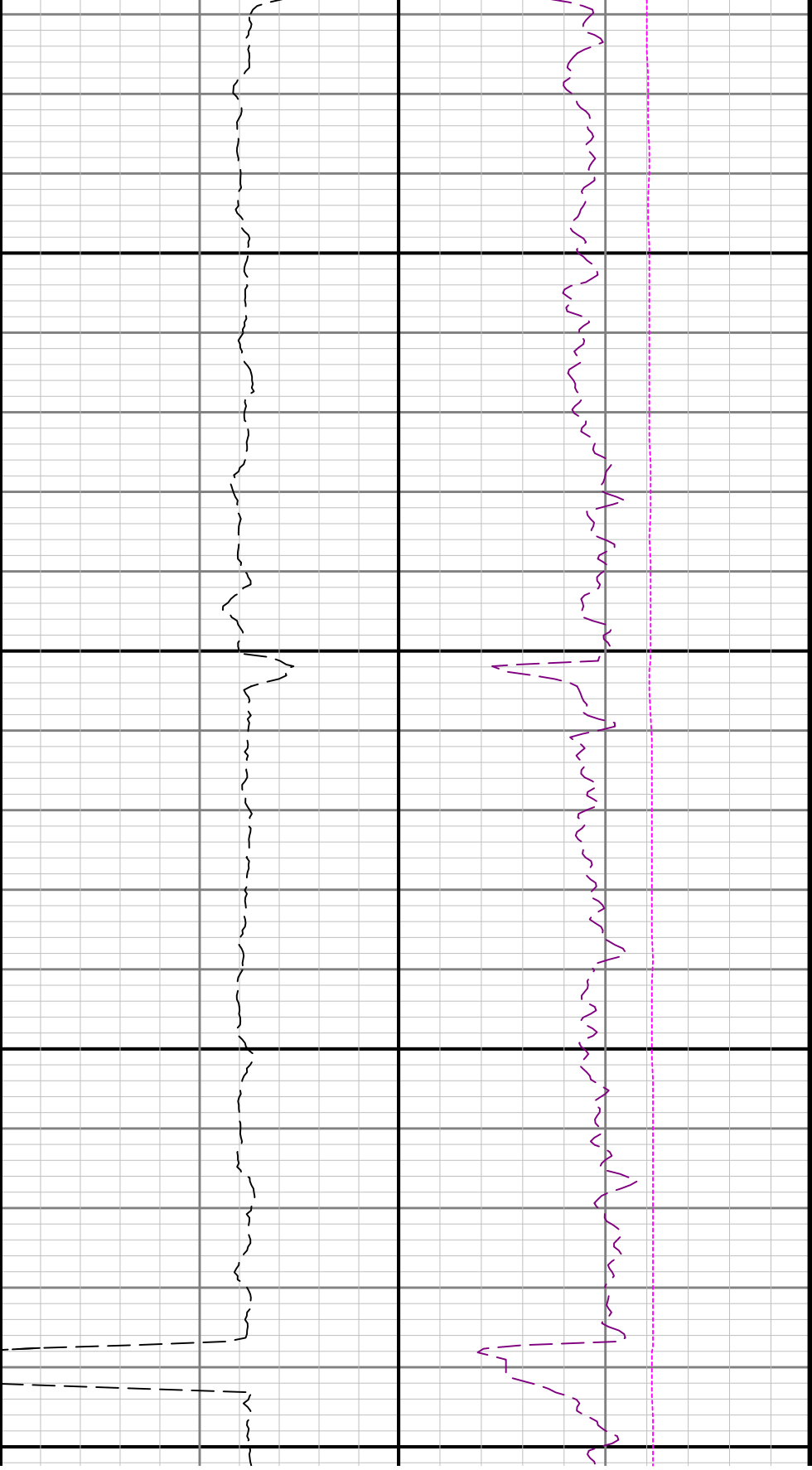


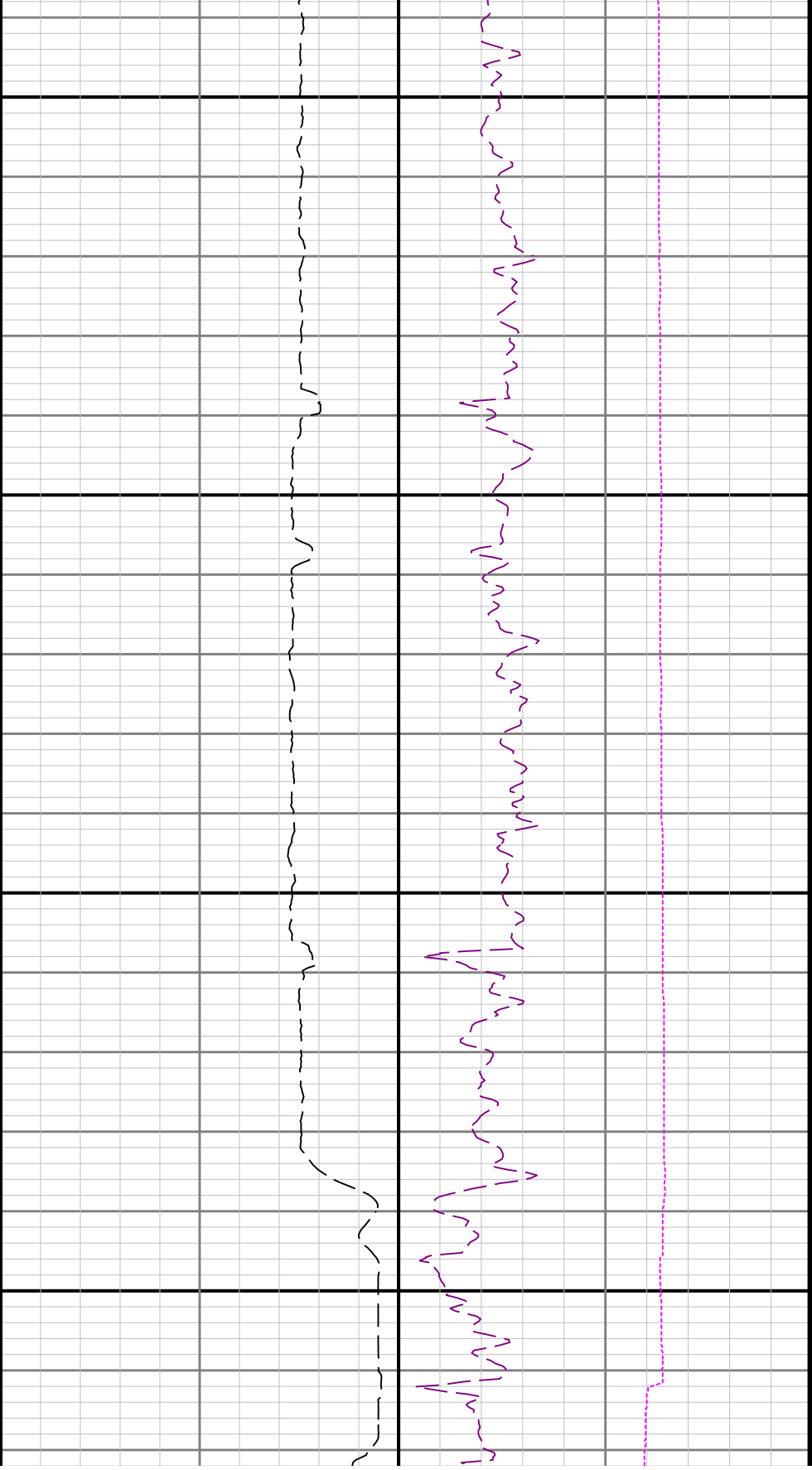


6000

6100



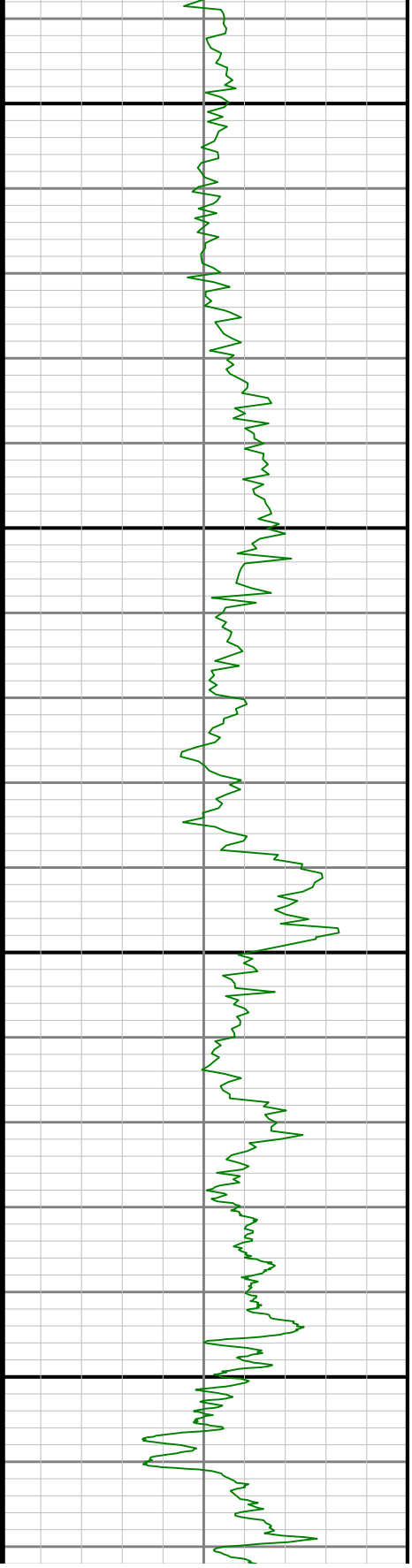


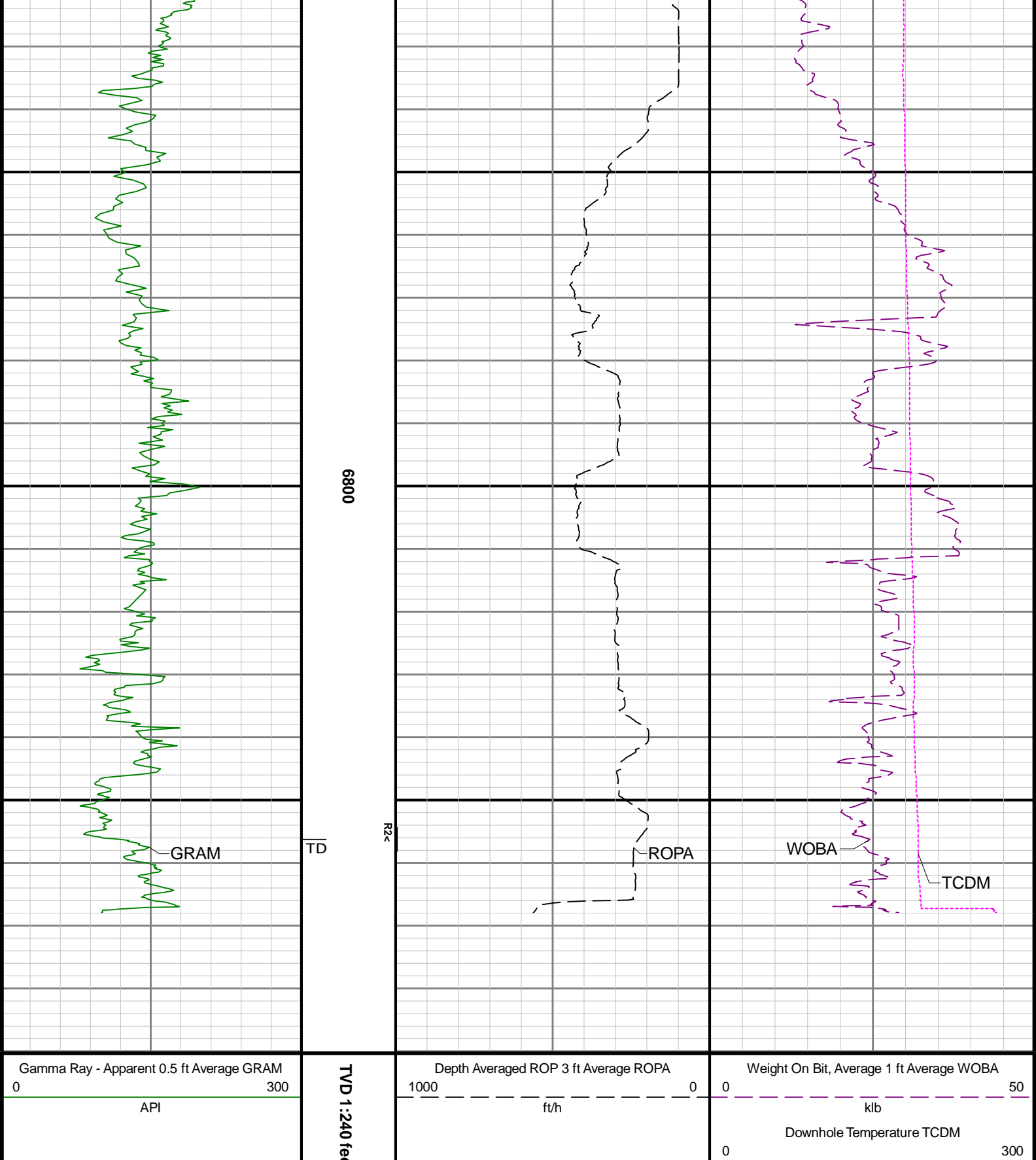


R1<R2

6600

6700





deg					ft					degF				
Directional Survey Summary														
Latitude:		40° 15' 07.859" N						Longitude:		104° 34' 13.332" W				
North Reference:		Grid						Drill Depth Zero:		Rig Floor				
Vertical Datum is:		Mean Sea Level						Vertical Datum to DDZ: (ft)		4777.00				
Vertical Section North: (ft)		0.00						Vertical Section East: (ft)		0.00				
Vertical Section Azimuth: (deg)		185.18												
Grid Convergence: (deg)		-0.60						Magnetic Declination: (deg)		7.93				
Total Correction: (deg)		7.33						TVD Calculation Method:		Minimum Curvature				
Magnetic Correction:		Off						Local Magnetic Field: (nT)		51873				
Local Magnetic Dip Angle: (deg)		66.61						Local Gravity Field: (m/s2)		9.800				
Tie-In / Projection	Measured Depth (ft)	Inclination (deg)	Azimuth (deg)	Temperature (degF)	North (ft)	East (ft)	True Vertical Depth (ft)	TVD Subsea (ft)	Vertical Section (ft)	Course Length (ft)	Dog Leg Severity (deg/100ft)	Build Rate (deg/100ft)	Turn Rate (deg/100ft)	
Tie-In	0.00	0.00	0.00	N/A	0.00	0.00	0.00	-4777.00	0.00	0.00	0.00	0.00	0.00	
	81.00	0.37	130.60	N/A	-0.17	0.20	81.00	-4696.00	0.15	81.00	0.46	0.46	161.23	
	175.00	0.09	119.15	N/A	-0.40	0.49	175.00	-4602.00	0.36	94.00	0.30	-0.30	-12.18	
	266.00	0.36	35.24	N/A	-0.20	0.72	266.00	-4511.00	0.14	91.00	0.40	0.30	-92.21	
	361.00	0.04	193.33	N/A	0.01	0.89	361.00	-4416.00	-0.09	95.00	0.42	-0.34	166.41	
	456.00	0.34	322.12	N/A	0.20	0.70	456.00	-4321.00	-0.26	95.00	0.39	0.32	135.57	
	550.00	0.45	294.92	N/A	0.57	0.20	549.99	-4227.01	-0.59	94.00	0.23	0.12	-28.94	
	645.00	0.68	244.92	N/A	0.49	-0.65	644.99	-4132.01	-0.43	95.00	0.55	0.24	-52.63	
	739.00	0.66	244.93	N/A	0.02	-1.65	738.98	-4038.02	0.12	94.00	0.02	-0.02	0.01	
	834.00	0.65	257.68	N/A	-0.32	-2.67	833.98	-3943.02	0.56	95.00	0.15	-0.01	13.42	
	929.00	1.04	255.41	N/A	-0.65	-4.03	928.97	-3848.03	1.02	95.00	0.41	0.41	-2.39	
	1023.00	0.51	230.63	N/A	-1.13	-5.18	1022.96	-3754.04	1.60	94.00	0.65	-0.56	-26.36	
	1118.00	0.72	248.76	N/A	-1.62	-6.06	1117.95	-3659.05	2.16	95.00	0.30	0.22	19.08	
	1213.00	1.16	222.52	N/A	-2.54	-7.27	1212.94	-3564.06	3.19	95.00	0.64	0.46	-27.62	
	1307.00	0.86	248.03	N/A	-3.51	-8.56	1306.93	-3470.07	4.27	94.00	0.57	-0.32	27.14	
	1402.00	1.25	234.64	N/A	-4.38	-10.07	1401.91	-3375.09	5.27	95.00	0.48	0.41	-14.09	
	1497.00	0.83	239.97	N/A	-5.32	-11.51	1496.89	-3280.11	6.34	95.00	0.45	-0.44	5.61	
	1591.00	0.53	281.46	N/A	-5.57	-12.53	1590.89	-3186.11	6.68	94.00	0.59	-0.32	44.14	
	1686.00	0.56	281.61	N/A	-5.39	-13.41	1685.88	-3091.12	6.58	95.00	0.03	0.03	0.16	
	1781.00	0.50	250.72	N/A	-5.44	-14.26	1780.88	-2996.12	6.70	95.00	0.30	-0.06	-32.52	
	1875.00	0.45	166.36	N/A	-5.93	-14.56	1874.88	-2902.12	7.22	94.00	0.68	-0.05	-89.74	
	1920.00	0.84	169.69	N/A	-6.43	-14.46	1919.87	-2857.13	7.71	45.00	0.87	0.87	7.40	
	1993.00	0.68	164.66	106.8	-7.37	-14.25	1992.87	-2784.13	8.63	73.00	0.24	-0.22	-6.89	
	2088.00	0.14	80.96	109.5	-7.90	-13.98	2087.87	-2689.13	9.13	95.00	0.71	-0.57	-88.11	
	2182.00	0.07	241.42	112.2	-7.91	-13.92	2181.87	-2595.13	9.13	94.00	0.22	-0.07	170.70	
	2277.00	2.22	210.46	114.9	-9.52	-14.90	2276.84	-2500.16	10.83	95.00	2.27	2.26	-32.59	
	2372.00	4.26	210.41	117.6	-14.15	-17.62	2371.68	-2405.32	15.68	95.00	2.15	2.15	-0.05	
	2466.00	5.82	210.33	120.3	-21.27	-21.80	2465.32	-2311.68	23.16	94.00	1.66	1.66	-0.09	
	2561.00	7.91	210.16	123.0	-31.09	-27.51	2559.63	-2217.37	33.44	95.00	2.20	2.20	-0.18	
	2656.00	10.36	209.30	128.4	-44.19	-34.98	2653.42	-2123.58	47.17	95.00	2.58	2.58	-0.91	
	2751.00	13.01	208.91	128.4	-61.00	-44.33	2746.44	-2030.56	64.75	95.00	2.79	2.79	-0.41	
	2845.00	15.63	208.80	131.1	-81.36	-55.55	2837.51	-1939.49	86.05	94.00	2.79	2.79	-0.12	
	2940.00	17.65	208.40	131.1	-105.25	-68.57	2928.53	-1848.47	111.01	95.00	2.13	2.13	-0.42	
	3034.00	16.74	209.70	131.1	-129.54	-82.05	3018.33	-1758.67	136.42	94.00	1.05	-0.97	1.38	
	3129.00	15.45	209.04	133.8	-152.49	-94.97	3109.60	-1667.40	160.44	95.00	1.37	-1.36	-0.69	
	3224.00	16.88	208.89	133.8	-175.63	-107.78	3200.85	-1576.15	184.65	95.00	1.51	1.51	-0.16	
	3318.00	17.94	209.07	133.8	-200.24	-121.41	3290.54	-1486.46	210.38	94.00	1.13	1.13	0.19	
	3413.00	20.65	208.73	136.5	-227.72	-136.57	3380.19	-1396.81	239.12	95.00	2.86	2.85	-0.36	
	3507.00	23.66	208.95	139.2	-258.76	-153.67	3467.24	-1309.76	271.58	94.00	3.20	3.20	0.23	
	3602.00	23.90	208.99	141.9	-292.28	-172.23	3554.18	-1222.82	306.63	95.00	0.25	0.25	0.04	
	3696.00	23.08	209.62	141.9	-324.95	-190.56	3640.39	-1136.61	340.83	94.00	0.91	-0.87	0.67	
	3791.00	24.11	208.46	141.9	-358.20	-209.01	3727.44	-1049.56	375.61	95.00	1.19	1.08	-1.22	
	3886.00	24.59	208.52	144.6	-392.62	-227.70	3813.99	-963.01	411.58	95.00	0.51	0.51	0.06	
	3981.00	24.51	208.72	144.6	-427.27	-246.60	3900.41	-876.59	447.79	95.00	0.12	-0.08	0.21	
	4075.00	24.31	208.82	147.3	-461.32	-265.30	3986.00	-791.00	483.39	94.00	0.22	-0.21	0.11	
	4170.00	24.26	208.59	147.3	-495.67	-284.88	4070.56	-704.44	519.22	95.00	0.14	-0.05	0.22	
	4265.00	24.26	208.59	147.3	-530.32	-304.88	4165.12	-617.88	555.15	95.00	0.14	-0.05	0.22	
	4360.00	24.26	208.59	147.3	-565.32	-324.88	4260.12	-531.88	591.15	95.00	0.14	-0.05	0.22	
	4455.00	24.26	208.59	147.3	-600.32	-344.88	4355.12	-445.88	627.15	95.00	0.14	-0.05	0.22	
	4550.00	24.26	208.59	147.3	-635.32	-364.88	4450.12	-359.88	663.15	95.00	0.14	-0.05	0.22	
	4645.00	24.26	208.59	147.3	-670.32	-384.88	4545.12	-273.88	700.15	95.00	0.14	-0.05	0.22	
	4740.00	24.26	208.59	147.3	-705.32	-404.88	4640.12	-187.88	736.15	95.00	0.14	-0.05	0.22	
	4835.00	24.26	208.59	147.3	-740.32	-424.88	4735.12	-101.88	772.15	95.00	0.14	-0.05	0.22	
	4930.00	24.26	208.59	147.3	-775.32	-444.88	4830.12	70.12	808.15	95.00	0.14	-0.05	0.22	
	5025.00	24.26	208.59	147.3	-810.32	-464.88	4925.12	156.12	844.15	95.00	0.14	-0.05	0.22	
	5120.00	24.26	208.59	147.3	-845.32	-484.88	5020.12	242.12	880.15	95.00	0.14	-0.05	0.22	
	5215.00	24.26	208.59	147.3	-880.32	-504.88	5115.12	328.12	916.15	95.00	0.14	-0.05	0.22	
	5310.00	24.26	208.59	147.3	-915.32	-524.88	5210.12	414.12	952.15	95.00	0.14	-0.05	0.22	
	5405.00	24.26	208.59	147.3	-950.32	-544.88	5305.12	500.12	988.15	95.00	0.14	-0.05	0.22	
	5500.00	24.26	208.59	147.3	-985.32	-564.88	5400.12	586.12	1024.15	95.00	0.14	-0.05	0.22	
	5595.00	24.26	208.59	147.3	-1020.32	-584.88	5495.12	672.12	1060.15	95.00	0.14	-0.05	0.22	
	5690.00	24.26	208.59	147.3	-1055.32	-604.88	5590.12	758.12	1096.15	95.00	0.14	-0.05	0.22	
	5785.00	24.26	208.59	147.3	-1090.32	-624.88	5685.12	844.12	1132.15	95.00	0.14	-0.05	0.22	
	5880.00	24.26	208.59	147.3	-1125.32	-644.88	5780.12	930.12	1168.15	95.00	0.14	-0.05	0.22	
	5975.00	24.26	208.59	147.3	-1160.32	-664.88	5875.12	1016.12	1204.15	95.00	0.14	-0.05	0.22	
	6070.00	24.26	208.59	147.3	-1195.32	-684.88	5970.12	1102.12	1240.15	95.00	0.14	-0.05	0.22	
	6165.00	24.26	208.59	147.3	-1230.32	-704.88	6065.12	1188.12	1276.15	95.00	0.14	-0.05	0.22	
	6260.00	24.26	208.59	147.3	-1265.32	-724.88	6160.12	1274.12	1312.15	95.00	0.14	-0.05	0.22	
	6355.00	24.26	208.59	147.3	-1300.32	-744.88	6255.12	1360.12	1348.15	95.00	0.14	-0.05	0.22	
	6450.00	24.26	208.59	147.3	-1335.32	-764.88	6350.12	1446.12	1384.15	95.00	0.14	-0.05	0.22	
	6545.00	24.26	208.59	147.3	-1370.32	-784.88	6445.12	1532.12	1420.15	95.00	0.14	-0.05	0.22	
	6640.00	24.26	208.59	147.3	-1405.32	-804.88	6540.12	1618.12	1456.15	95.00	0.14	-0.05	0.22	
	6735.00	24.26	208.59	147.3	-1440.32	-824.88	6635.12	1704.12	1492.15	95.00	0.14	-0.05	0.22	
	6830.00	24.26	208.59	147.3	-1475.32	-844.88	6730.12	1790.12	1528.15	95.00	0.14	-0.05	0.22	
	6925.00	24.26	208.59	147.3	-1510.32	-864.88	6825.12	1876.12	1564.15	95.00	0.14	-0.05	0.22	
	7020.00	24.26	208.59	147.3	-1545.32	-884.88	6920.12	1962.12	1600.15	95.00	0.14	-0.05	0.22	
	7115.00	24.26	208.59	147.3	-1580.32	-904.88	7015.12	2048.12	1636.15	95.00	0.14	-0.05	0.22	
	7210.00	24.26	208.59	147.3	-1615.32	-924.88	7110.12	2134.12	1672.15	95.00	0.14	-0.05	0.22	

		4170.00	24.36	206.32	147.3	-455.67	-204.06	4072.36	-704.44	519.29	93.00	0.14	0.05	-0.32
		4265.00	24.23	209.17	150.0	-529.91	-302.94	4159.15	-617.85	555.09	95.00	0.31	-0.14	0.68
		4359.00	24.69	208.51	150.0	-564.00	-321.71	4244.71	-532.29	590.74	94.00	0.57	0.49	-0.70
		4454.00	24.47	209.01	152.7	-598.64	-340.72	4331.10	-445.90	626.96	95.00	0.32	-0.23	0.53
		4549.00	24.74	208.37	152.7	-633.34	-359.71	4417.48	-359.52	663.23	95.00	0.40	0.28	-0.67
		4643.00	24.69	208.57	155.4	-667.89	-378.44	4502.87	-274.13	699.33	94.00	0.10	-0.05	0.21
		4738.00	24.61	209.32	155.4	-702.56	-397.62	4589.21	-187.79	735.59	95.00	0.34	-0.08	0.79
		4833.00	24.62	209.73	158.1	-736.99	-417.12	4675.58	-101.42	771.64	95.00	0.18	0.01	0.43
		4928.00	24.26	208.90	158.1	-771.26	-436.36	4762.07	-14.93	807.51	95.00	0.52	-0.38	-0.87
		5022.00	24.57	208.58	160.8	-805.33	-455.05	4847.66	70.66	843.13	94.00	0.36	0.33	-0.34
		5117.00	24.44	208.69	160.8	-839.92	-473.93	4934.10	157.10	879.27	95.00	0.15	-0.14	0.12
		5212.00	24.07	208.74	163.5	-874.14	-492.68	5020.72	243.72	915.05	95.00	0.39	-0.39	0.05
		5307.00	24.25	208.80	163.5	-908.22	-511.39	5107.39	330.39	950.69	95.00	0.19	0.19	0.06
		5401.00	23.07	210.43	163.5	-941.02	-530.02	5193.49	416.49	985.03	94.00	1.44	-1.26	1.73
		5496.00	24.22	209.39	166.2	-974.05	-549.01	5280.52	503.52	1019.64	95.00	1.29	1.21	-1.09
		5591.00	23.96	209.53	166.2	-1007.81	-568.08	5367.24	590.24	1054.99	95.00	0.28	-0.27	0.15
		5685.00	24.32	208.58	166.2	-1041.42	-586.75	5453.02	676.02	1090.14	94.00	0.56	0.38	-1.01
		5780.00	23.66	208.74	168.9	-1075.31	-605.27	5539.81	762.81	1125.57	95.00	0.70	-0.69	0.17
		5875.00	24.11	208.66	171.6	-1109.05	-623.75	5626.68	849.68	1160.84	95.00	0.47	0.47	-0.08
		5970.00	23.65	209.40	171.6	-1142.68	-642.41	5713.55	936.55	1196.01	95.00	0.58	-0.48	0.78
		6159.00	24.11	208.43	174.3	-1209.65	-679.39	5886.37	1109.37	1266.05	189.00	0.32	0.24	-0.51
		6254.00	24.17	208.67	177.0	-1243.78	-697.96	5973.06	1196.06	1301.72	95.00	0.12	0.06	0.25
		6348.00	22.56	208.97	179.7	-1276.44	-715.93	6059.35	1282.35	1335.87	94.00	1.72	-1.71	0.32
		6443.00	24.13	208.95	179.7	-1309.38	-734.16	6146.57	1369.57	1370.31	95.00	1.65	1.65	-0.02
		6538.00	23.75	208.92	182.5	-1343.12	-752.81	6233.40	1456.40	1405.60	95.00	0.40	-0.40	-0.03
		6632.00	23.91	209.14	182.5	-1376.32	-771.24	6319.38	1542.38	1440.33	94.00	0.19	0.17	0.23
		6726.00	23.38	209.09	185.2	-1409.26	-789.58	6405.49	1628.49	1474.79	94.00	0.56	-0.56	-0.05
		6821.00	27.92	209.27	185.2	-1445.15	-809.63	6491.11	1714.11	1512.35	95.00	4.78	4.78	0.19
		6916.00	36.91	206.87	187.9	-1490.09	-833.45	6571.22	1794.22	1559.26	95.00	9.56	9.46	-2.53
		7010.00	44.96	199.56	190.6	-1546.69	-857.38	6642.22	1865.22	1617.78	94.00	9.95	8.56	-7.78
		7105.00	48.87	192.42	179.7	-1613.33	-876.33	6707.15	1930.15	1685.86	95.00	6.86	4.12	-7.52
		7200.00	59.42	186.08	179.7	-1689.20	-888.40	6762.75	1985.75	1762.51	95.00	12.34	11.11	-6.67
		7294.00	69.15	184.16	185.2	-1773.45	-895.89	6803.49	2026.49	1847.09	94.00	10.51	10.35	-2.04
		7389.00	70.40	178.96	187.9	-1862.52	-898.30	6836.35	2059.35	1936.02	95.00	5.30	1.32	-5.47
		7484.00	80.78	179.14	190.6	-1954.40	-896.78	6859.96	2082.96	2027.38	95.00	10.93	10.93	0.19
		7579.00	90.40	179.79	193.3	-2049.00	-895.90	6867.26	2090.26	2121.52	95.00	10.15	10.13	0.68
		7673.00	89.91	178.12	198.7	-2142.98	-894.18	6867.00	2090.00	2214.96	94.00	1.85	-0.52	-1.78
		7768.00	90.03	179.64	198.7	-2237.96	-892.33	6867.05	2090.05	2309.38	95.00	1.60	0.13	1.60
		7862.00	90.31	179.25	204.1	-2331.95	-891.42	6866.77	2089.77	2402.91	94.00	0.51	0.30	-0.41
		7957.00	89.91	179.52	209.5	-2426.95	-890.40	6866.59	2089.59	2497.42	95.00	0.51	-0.42	0.28
		8052.00	90.03	178.82	212.2	-2521.94	-889.02	6866.64	2089.64	2591.90	95.00	0.75	0.13	-0.74
		8146.00	89.82	178.95	214.9	-2615.92	-887.19	6866.76	2089.76	2685.33	94.00	0.26	-0.22	0.14
		8241.00	90.22	178.87	217.6	-2710.90	-885.38	6866.73	2089.73	2779.77	95.00	0.43	0.42	-0.08
		8335.00	90.03	179.10	217.6	-2804.89	-883.72	6866.52	2089.52	2873.22	94.00	0.32	-0.20	0.24
		8430.00	90.37	178.90	220.3	-2899.87	-882.06	6866.19	2089.19	2967.66	95.00	0.42	0.36	-0.21
		8524.00	90.34	179.07	223.0	-2993.85	-880.40	6865.61	2088.61	3061.11	94.00	0.18	-0.03	0.18
		8619.00	89.91	177.96	223.0	-3088.82	-877.93	6865.40	2088.40	3155.47	95.00	1.25	-0.45	-1.17
		8714.00	89.82	177.89	223.0	-3183.76	-874.49	6865.63	2088.63	3249.71	95.00	0.12	-0.09	-0.07
		8808.00	89.72	178.41	225.7	-3277.71	-871.46	6866.00	2089.00	3343.00	94.00	0.56	-0.11	0.55
		8902.00	90.12	180.87	225.7	-3371.70	-870.87	6866.14	2089.14	3436.55	94.00	2.65	0.43	2.62
		8997.00	90.37	180.14	228.4	-3466.69	-871.71	6865.73	2088.73	3531.24	95.00	0.81	0.26	-0.77
		9091.00	90.06	180.68	231.1	-3560.69	-872.38	6865.38	2088.38	3624.91	94.00	0.66	-0.33	0.57
		9186.00	89.94	180.84	233.8	-3655.68	-873.64	6865.38	2088.38	3719.63	95.00	0.21	-0.13	0.17
		9281.00	90.43	180.93	233.8	-3750.67	-875.11	6865.07	2088.07	3814.36	95.00	0.52	0.52	0.09
		9375.00	90.12	180.73	236.5	-3844.66	-876.47	6864.62	2087.62	3908.09	94.00	0.39	-0.33	-0.21
		9470.00	90.06	180.96	236.5	-3939.65	-877.87	6864.47	2087.47	4002.82	95.00	0.25	-0.06	0.24
		9564.00	90.09	182.43	239.2	-4033.60	-880.65	6864.35	2087.35	4096.64	94.00	1.56	0.03	1.56
		9659.00	89.97	180.59	239.2	-4128.57	-883.15	6864.30	2087.30	4191.44	95.00	1.94	-0.13	-1.94
		9753.00	90.65	181.09	241.9	-4222.55	-884.53	6863.79	2086.79	4285.17	94.00	0.90	0.72	0.53
		9848.00	90.09	180.84	241.9	-4317.54	-886.13	6863.17	2086.17	4379.91	95.00	0.65	-0.59	-0.26
		9943.00	90.80	181.23	244.6	-4412.52	-887.85	6862.44	2085.44	4474.66	95.00	0.85	0.75	0.41
		10038.00	90.37	180.91	244.6	-4507.50	-889.62	6861.47	2084.47	4569.41	95.00	0.56	-0.45	-0.34

	10132.00	89.91	181.06	247.3	-4601.48	-891.24	6861.24	2084.24	4663.16	94.00	0.51	-0.49	0.16
	10227.00	90.18	181.18	247.3	-4696.46	-893.09	6861.16	2084.16	4757.92	95.00	0.31	0.28	0.13
	10322.00	90.22	180.73	247.3	-4791.45	-894.68	6860.83	2083.83	4852.66	95.00	0.48	0.04	-0.47
	10416.00	90.34	179.73	247.3	-4885.45	-895.05	6860.37	2083.37	4946.30	94.00	1.07	0.13	-1.06
	10511.00	90.40	180.48	247.3	-4980.44	-895.23	6859.76	2082.76	5040.93	95.00	0.79	0.06	0.79
	10605.00	89.94	180.40	247.3	-5074.44	-895.95	6859.48	2082.48	5134.61	94.00	0.50	-0.49	-0.09
	10700.00	90.12	179.71	250.0	-5169.44	-896.04	6859.43	2082.43	5229.23	95.00	0.75	0.19	-0.73
	10795.00	89.85	180.27	250.0	-5264.44	-896.02	6859.45	2082.45	5323.84	95.00	0.65	-0.28	0.59
	10889.00	89.88	180.51	250.0	-5358.44	-896.66	6859.68	2082.68	5417.51	94.00	0.26	0.03	0.26
	10984.00	89.75	180.52	250.0	-5453.43	-897.52	6859.98	2082.98	5512.19	95.00	0.14	-0.14	0.01
	11079.00	89.88	180.72	252.7	-5548.43	-898.55	6860.29	2083.29	5606.89	95.00	0.25	0.14	0.21
	11173.00	90.46	180.24	252.7	-5642.42	-899.33	6860.01	2083.01	5700.57	94.00	0.80	0.62	-0.51
	11267.00	90.40	181.08	255.4	-5736.41	-900.42	6859.30	2082.30	5794.28	94.00	0.90	-0.06	0.89
	11362.00	89.54	180.01	255.4	-5831.41	-901.32	6859.35	2082.35	5888.97	95.00	1.45	-0.91	-1.13
	11457.00	89.60	179.56	255.4	-5926.40	-900.96	6860.07	2083.07	5983.54	95.00	0.48	0.06	-0.47
	11646.00	89.54	179.53	255.4	-6115.39	-899.46	6861.49	2084.49	6171.62	189.00	0.04	-0.03	-0.02
	11741.00	89.60	179.94	258.1	-6210.39	-899.02	6862.20	2085.20	6266.19	95.00	0.44	0.06	0.43
	11836.00	89.60	179.64	258.1	-6305.38	-898.68	6862.86	2085.86	6360.77	95.00	0.32	0.00	-0.32
	11930.00	89.54	179.64	258.1	-6399.38	-898.08	6863.57	2086.57	6454.33	94.00	0.06	-0.06	0.00
	12025.00	89.63	179.70	258.1	-6494.38	-897.54	6864.26	2087.26	6548.89	95.00	0.11	0.09	0.06
	12120.00	89.51	179.98	260.8	-6589.37	-897.27	6864.97	2087.97	6643.47	95.00	0.32	-0.13	0.29
	12215.00	89.57	179.58	260.8	-6684.37	-896.91	6865.73	2088.73	6738.05	95.00	0.43	0.06	-0.42
	12309.00	89.51	179.33	260.8	-6778.36	-896.01	6866.49	2089.49	6831.57	94.00	0.27	-0.06	-0.27
	12499.00	89.85	179.50	260.8	-6968.35	-894.07	6867.55	2090.55	7020.61	190.00	0.20	0.18	0.09
	12593.00	89.78	179.28	260.8	-7062.34	-893.07	6867.85	2090.85	7114.13	94.00	0.25	-0.07	-0.23
	12688.00	89.85	179.71	263.5	-7157.34	-892.24	6868.16	2091.16	7208.66	95.00	0.46	0.07	0.45
	12783.00	90.15	179.32	266.2	-7252.33	-891.43	6868.16	2091.16	7303.20	95.00	0.52	0.32	-0.41
	12877.00	90.22	179.36	266.2	-7346.33	-890.35	6867.85	2090.85	7396.71	94.00	0.09	0.07	0.04
	12972.00	90.37	179.91	266.2	-7441.32	-889.74	6867.36	2090.36	7491.26	95.00	0.60	0.16	0.58
	13066.00	90.49	179.47	269.0	-7535.32	-889.23	6866.66	2089.66	7584.83	94.00	0.49	0.13	-0.47
	13161.00	90.71	179.31	269.0	-7630.31	-888.22	6865.66	2088.66	7679.34	95.00	0.29	0.23	-0.17
	13255.00	90.99	179.04	269.0	-7724.29	-886.87	6864.27	2087.27	7772.81	94.00	0.41	0.30	-0.29
	13350.00	90.55	180.00	271.7	-7819.28	-886.07	6862.99	2085.99	7867.34	95.00	1.11	-0.46	1.01
	13444.00	90.34	178.72	271.7	-7913.26	-885.02	6862.26	2085.26	7960.85	94.00	1.38	-0.22	-1.36
	13539.00	89.94	178.05	269.0	-8008.23	-882.35	6862.03	2085.03	8055.18	95.00	0.82	-0.42	-0.71
	13633.00	90.40	178.39	271.7	-8102.18	-879.43	6861.75	2084.75	8148.49	94.00	0.61	0.49	0.36
	13728.00	90.31	177.76	271.7	-8197.12	-876.24	6861.16	2084.16	8242.76	95.00	0.67	-0.09	-0.66
	13823.00	90.15	177.53	271.7	-8292.04	-872.33	6860.78	2083.78	8336.94	95.00	0.29	-0.17	-0.24
	13917.00	89.88	177.83	274.4	-8385.97	-868.53	6860.76	2083.76	8430.13	94.00	0.43	-0.29	0.32
	14012.00	90.37	178.82	274.4	-8480.92	-865.75	6860.55	2083.55	8524.45	95.00	1.16	0.52	1.04
	14106.00	90.12	179.71	274.4	-8574.91	-864.54	6860.15	2083.15	8617.95	94.00	0.98	-0.27	0.95
	14201.00	90.34	179.90	277.1	-8669.91	-864.22	6859.77	2082.77	8712.53	95.00	0.31	0.23	0.20
	14296.00	90.46	179.92	277.1	-8764.91	-864.07	6859.10	2082.10	8807.13	95.00	0.13	0.13	0.02
	14390.00	90.59	179.26	277.1	-8858.90	-863.40	6858.24	2081.24	8900.67	94.00	0.72	0.14	-0.70
	14485.00	90.43	180.16	277.1	-8953.90	-862.92	6857.40	2080.40	8995.24	95.00	0.96	-0.17	0.95
	14579.00	89.91	180.37	277.1	-9047.89	-863.35	6857.12	2080.12	9088.89	94.00	0.60	-0.55	0.22
	14674.00	90.00	179.83	277.1	-9142.89	-863.52	6857.19	2080.19	9183.52	95.00	0.58	0.09	-0.57
	14769.00	90.00	179.76	279.8	-9237.89	-863.18	6857.19	2080.19	9278.10	95.00	0.07	0.00	-0.07
	14863.00	90.03	179.61	279.8	-9331.89	-862.66	6857.17	2080.17	9371.67	94.00	0.16	0.03	-0.16
	14958.00	90.18	179.95	279.8	-9426.89	-862.30	6856.99	2079.99	9466.24	95.00	0.39	0.16	0.36
	15077.00	90.12	179.21	277.1	-9545.89	-861.43	6856.68	2079.68	9584.67	119.00	0.62	-0.05	-0.62
Projection	15101.00	90.12	179.21	N/A	-9569.88	-861.09	6856.63	2079.63	9608.54	24.00	0.00	-0.01	-0.00