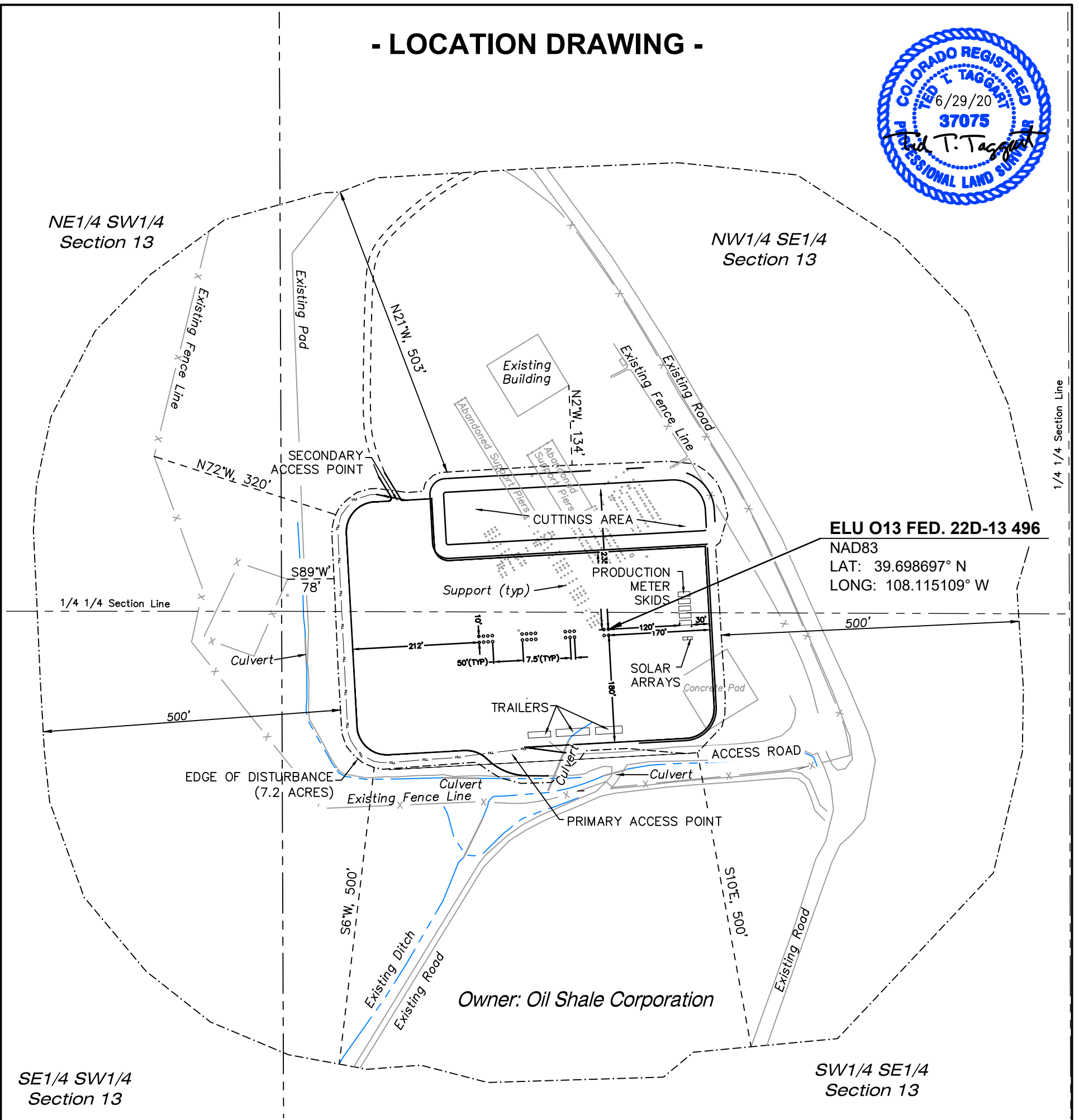
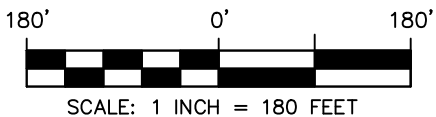


- LOCATION DRAWING -



FUTURE LAND USE	
CROP LAND:	<input type="checkbox"/> IRRIGATED <input type="checkbox"/> DRY LAND <input type="checkbox"/> IMPROVED PASTURE <input type="checkbox"/> HAY MEADOW <input type="checkbox"/> CRP
NON-CROP LAND:	<input checked="" type="checkbox"/> RANGELAND <input type="checkbox"/> TIMBER <input type="checkbox"/> RECREATIONAL <input type="checkbox"/> OTHER (Describe)
SUBDIVIDED:	<input type="checkbox"/> INDUSTRIAL <input type="checkbox"/> COMMERCIAL <input type="checkbox"/> RESIDENTIAL
CURRENT LAND USE	
CROP LAND:	<input type="checkbox"/> IRRIGATED <input type="checkbox"/> DRY LAND <input type="checkbox"/> IMPROVED PASTURE <input type="checkbox"/> HAY MEADOW <input type="checkbox"/> CRP
NON-CROP LAND:	<input type="checkbox"/> RANGELAND <input type="checkbox"/> TIMBER <input type="checkbox"/> RECREATIONAL <input checked="" type="checkbox"/> OTHER (Describe)
SUBDIVIDED:	<input type="checkbox"/> INDUSTRIAL <input type="checkbox"/> COMMERCIAL <input type="checkbox"/> RESIDENTIAL <input checked="" type="checkbox"/> EXISTING PAD

PLANT COMMUNITY	
<input type="checkbox"/> DISTURBED GRASSLAND	
<input checked="" type="checkbox"/> NATIVE GRASSLAND	
<input checked="" type="checkbox"/> SHRUB LAND	
<input type="checkbox"/> PLAINS RIPARIAN	
<input type="checkbox"/> MOUNTAIN RIPARIAN	
<input type="checkbox"/> FOREST LAND	
<input type="checkbox"/> WETLANDS AQUATIC	
<input type="checkbox"/> ALPINE	



WASATCH SURVEYING ASSOCIATES  
906 MAIN STREET, EVANSTON, WY 82930  
(307) 789-4545



**CAERUS OIL & GAS LLC**

ELU O13 496 WELL PAD  
W1/2 SE1/4, SECTION 13, T4S, R96W, 6TH P.M.  
RIO BLANCO COUNTY, COLORADO

LOCATION DRAWING		
SURVEYED BY: JT/BT	DATE: 3/18/20	FIGURE #6
DRAWN BY: SGT	DATE: 6/29/20	PROJECT NO: 20-13-05

# Caerus Oil & Gas LLC

## ELU O13 496 WELL PAD

Section 13, T4S, R96W, 6th P.M.

Rio Blanco County, Colorado

DATE: June 29, 2020

DISTANCES FROM WELLHEAD																						
WELL NAME	BUILDING		BUILDING UNIT		HIGH OCCUPANCY BUILDING		D.O.A.A.		PUBLIC ROAD		ABOVE GROUND UTILITY		RAILROAD		PROPERTY LINE		CHILD CARE FACILITY		SCHOOL FACILITY		SCHOOL PROPERTY LINE	
	DIRECTION	LENGTH	DIRECTION	LENGTH	DIRECTION	LENGTH	DIRECTION	LENGTH	DIRECTION	LENGTH	DIRECTION	LENGTH	DIRECTION	LENGTH	DIRECTION	LENGTH	DIRECTION	LENGTH	DIRECTION	LENGTH	DIRECTION	LENGTH
ELU O13 FED 22D-13 496	N23°W	388'		>5280'		>5280'		>5280'	N62°E	302'		>5280'		>5280'	S00°W	1293'		>5280'		>5280'		>5280'
ELU O13 FED 22B-13 496	N22°W	386'		>5280'		>5280'		>5280'	N62°E	309'		>5280'		>5280'	S00°W	1293'		>5280'		>5280'		>5280'
ELU O13 FED 23C-13 496	N15°W	372'		>5280'		>5280'		>5280'	N66°E	355'		>5280'		>5280'	S00°W	1290'		>5280'		>5280'		>5280'
ELU O13 FED 12B-13 496	N14°W	371'		>5280'		>5280'		>5280'	N66°E	362'		>5280'		>5280'	S00°W	1289'		>5280'		>5280'		>5280'
ELU O13 FED 12C-13 496	N12°W	370'		>5280'		>5280'		>5280'	N66°E	369'		>5280'		>5280'	S00°W	1289'		>5280'		>5280'		>5280'
ELU O13 FED 24B-13 496	N05°W	365'		>5280'		>5280'		>5280'	N69°E	416'		>5280'		>5280'	S00°W	1286'		>5280'		>5280'		>5280'
ELU O13 FED 24A-13 496	N03°W	365'		>5280'		>5280'		>5280'	N69°E	423'		>5280'		>5280'	S00°W	1285'		>5280'		>5280'		>5280'
ELU O13 FED 13A-13 496	N02°W	365'		>5280'		>5280'		>5280'	N69°E	431'		>5280'		>5280'	S00°W	1285'		>5280'		>5280'		>5280'
ELU O13 FED 13B-13 496	N01°W	365'		>5280'		>5280'		>5280'	N70°E	438'		>5280'		>5280'	S00°W	1284'		>5280'		>5280'		>5280'
ELU O13 FED 25B-13 496	N07°E	370'		>5280'		>5280'		>5280'	N71°E	486'		>5280'		>5280'	S00°W	1281'		>5280'		>5280'		>5280'
ELU O13 FED 25C-13 496	N08°E	372'		>5280'		>5280'		>5280'	N72°E	493'		>5280'		>5280'	S00°W	1281'		>5280'		>5280'		>5280'
ELU O13 FED 21B-24 496	N09°E	373'		>5280'		>5280'		>5280'	N72°E	500'		>5280'		>5280'	S00°W	1280'		>5280'		>5280'		>5280'
ELU O13 FED 21D-24 496	N10°E	375'		>5280'		>5280'		>5280'	N72°E	507'		>5280'		>5280'	S00°W	1280'		>5280'		>5280'		>5280'
ELU O13 FED 23A-13 496	N23°W	397'		>5280'		>5280'		>5280'	N60°E	307'		>5280'		>5280'	S00°W	1283'		>5280'		>5280'		>5280'
ELU O13 FED 22C-13 496	N22°W	395'		>5280'		>5280'		>5280'	N61°E	313'		>5280'		>5280'	S00°W	1283'		>5280'		>5280'		>5280'
ELU O13 FED 23D-13 496	N14°W	382'		>5280'		>5280'		>5280'	N64°E	359'		>5280'		>5280'	S00°W	1280'		>5280'		>5280'		>5280'
ELU O13 FED 23B-13 496	N13°W	381'		>5280'		>5280'		>5280'	N65°E	366'		>5280'		>5280'	S00°W	1279'		>5280'		>5280'		>5280'
ELU O13 FED 12D-13 496	N12°W	380'		>5280'		>5280'		>5280'	N65°E	373'		>5280'		>5280'	S00°W	1279'		>5280'		>5280'		>5280'
ELU O13 FED 24D-13 496	N05°W	375'		>5280'		>5280'		>5280'	N68°E	420'		>5280'		>5280'	S00°W	1276'		>5280'		>5280'		>5280'
ELU O13 FED 25A-13 496	N03°W	375'		>5280'		>5280'		>5280'	N68°E	427'		>5280'		>5280'	S00°W	1275'		>5280'		>5280'		>5280'
ELU O13 FED 24C-13 496	N02°W	375'		>5280'		>5280'		>5280'	N68°E	434'		>5280'		>5280'	S00°W	1275'		>5280'		>5280'		>5280'
ELU O13 FED 13C-13 496	N01°W	375'		>5280'		>5280'		>5280'	N68°E	441'		>5280'		>5280'	S00°W	1274'		>5280'		>5280'		>5280'
ELU O13 FED 25D-13 496	N06°E	380'		>5280'		>5280'		>5280'	N70°E	488'		>5280'		>5280'	S00°W	1271'		>5280'		>5280'		>5280'
ELU O13 FED 21A-24 496	N07°E	381'		>5280'		>5280'		>5280'	N71°E	496'		>5280'		>5280'	S00°W	1271'		>5280'		>5280'		>5280'
ELU O13 FED 21C-24 496	N09°E	383'		>5280'		>5280'		>5280'	N71°E	503'		>5280'		>5280'	S00°W	1270'		>5280'		>5280'		>5280'
ELU O13 FED 22A-24 496	N10°E	384'		>5280'		>5280'		>5280'	N71°E	510'		>5280'		>5280'	S00°W	1270'		>5280'		>5280'		>5280'

DISTANCES FROM PRODUCTION EQUIPMENT																						
PRODUCTION FEATURE	BUILDING		BUILDING UNIT		HIGH OCCUPANCY BUILDING		D.O.A.A.		PUBLIC ROAD		ABOVE GROUND UTILITY		RAILROAD		PROPERTY LINE		CHILD CARE FACILITY		SCHOOL FACILITY		SCHOOL PROPERTY LINE	
	DIRECTION	LENGTH	DIRECTION	LENGTH	DIRECTION	LENGTH	DIRECTION	LENGTH	DIRECTION	LENGTH	DIRECTION	LENGTH	DIRECTION	LENGTH	DIRECTION	LENGTH	DIRECTION	LENGTH	DIRECTION	LENGTH	DIRECTION	LENGTH
Production Equipment	N25°W	384'		>5280'		>5280'		>5280'	N61°E	170'		>5280'		>5280'	S00°W	1300'		>5280'		>5280'		>5280'

