

Inspection Photos

12/8/2020

Operator: LARAMIE ENERGY LLC - 10433

Location ID: 335647

Garfield County, CO

Aaron Trujillo

NW Reclamation Specialist

COGCC

Inspection Photos
Operator Name: LARAMIE ENERGY LLC - 10433
Location ID: 335647

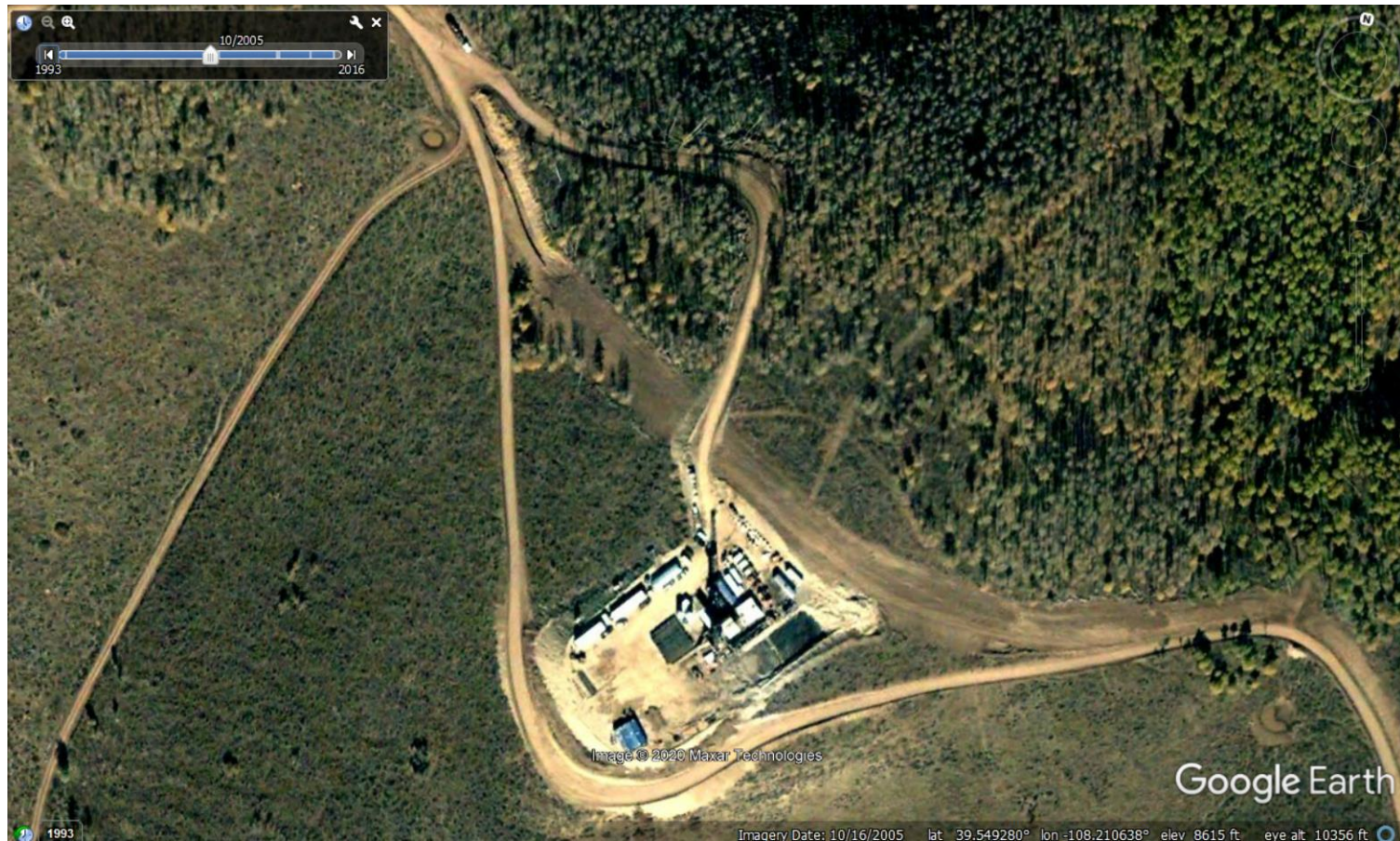


Photo 1: 2005 Google Earth aerial imagery. Photo shows rig equipment for drilling operations. Photo also shows an access road was constructed north of the location.



Inspection Photos
Operator Name: LARAMIE ENERGY LLC - 10433
Location ID: 335647



Photo 2: 2019 COGIS Aerial imagery. Photo shows Location size remains relatively unchanged. Two additional access points/roads have been constructed on the south end of the Location (dotted yellow lines); Reclamation work conducted on the northern access road. Additional reclamation to north road required.

Inspection Photos
Operator Name: LARAMIE ENERGY LLC - 10433
Location ID: 335647



Photo 3: Google Earth aerial imagery. Photo shows areas of the Location not needed for production operations have not been reclaimed. Red circles represent a 75 foot buffer around producing wells.



Inspection Photos
Operator Name: LARAMIE ENERGY LLC - 10433
Location ID: 335647



Photo 4: Photo taken from the south end of the Location, facing west. Photos 4-7 provide an overview of the Location from west, northwest, northeast to east. Photos show areas not reasonably needed for production on the Location have not been reclaimed in accordance with 1003 rules.

Inspection Photos
Operator Name: LARAMIE ENERGY LLC - 10433
Location ID: 335647



Photo 5: See comments under photo 4.



Inspection Photos
Operator Name: LARAMIE ENERGY LLC - 10433
Location ID: 335647



Photo 6: See comments under photo 4.



Inspection Photos
Operator Name: LARAMIE ENERGY LLC - 10433
Location ID: 335647



Photo 7: See comments under photo 4.



Inspection Photos
Operator Name: LARAMIE ENERGY LLC - 10433
Location ID: 335647



Photo 8: Photo taken from the northwest end of the Location, facing east. Photos 8-10 provide an overview of the Location from east, southeast to south. Photos show areas not reasonably needed for production on the Location have not been reclaimed in accordance with 1003 rules.

Inspection Photos
Operator Name: LARAMIE ENERGY LLC - 10433
Location ID: 335647



Photo 9: See comments under photo 8.



Inspection Photos
Operator Name: LARAMIE ENERGY LLC - 10433
Location ID: 335647



Photo 10: See comments under photo 8.



Inspection Photos
Operator Name: LARAMIE ENERGY LLC - 10433
Location ID: 335647



Photo 11: Photo taken from the east end of the Location, facing southwest. Photos 11-12 provide an overview of the Location from southwest to northwest. Photos show areas not reasonably needed for production on the Location have not been reclaimed in accordance with 1003 rules.



Inspection Photos
Operator Name: LARAMIE ENERGY LLC - 10433
Location ID: 335647



Photo 12: See comments under photo 11.



Inspection Photos
Operator Name: LARAMIE ENERGY LLC - 10433
Location ID: 335647



Photo 13: Photo taken from the south of the location, facing northwest. Photo shows 1 of the two access roads leading to the pad on the south end of the Location. Access road in photo will require reclamation during interim reclamation activities.

Inspection Photos
Operator Name: LARAMIE ENERGY LLC - 10433
Location ID: 335647



Photo 14: Photo taken from the south of the location, facing north. Photo shows the second access road leading to the pad on the south end of the Location.

Inspection Photos
Operator Name: LARAMIE ENERGY LLC - 10433
Location ID: 335647



Photo 15: Photo taken from the access road on the southeast end o the Location, facing south. Photo shows BMPs to stabilize slopes on the Location are missing, or insufficient.



Inspection Photos
Operator Name: LARAMIE ENERGY LLC - 10433
Location ID: 335647



Photo 16: Photo taken from the reclaimed access road north of the Location. Photo shows reclamation of the access road is not progressing towards reclamation requirements.

Inspection Photos
Operator Name: LARAMIE ENERGY LLC - 10433
Location ID: 335647



Photo 17: Photo taken from the reclaimed access road north of the Location. Photo shows erosion degradation observed along access road.

Inspection Photos
Operator Name: LARAMIE ENERGY LLC - 10433
Location ID: 335647



Photo 18: Photo taken from the northern access road, facing southwest. Areas of access road not progressing towards reclamation standards.

Inspection Photos
Operator Name: LARAMIE ENERGY LLC - 10433
Location ID: 335647



Photo 19: Photo taken from the north end of the Location, facing northeast. Photos shows BMPs to stabilize/protect the fill slopes, and prevent off-site sediment transport are missing or insufficient.

Inspection Photos
Operator Name: LARAMIE ENERGY LLC - 10433
Location ID: 335647



Photo 20: Photo taken from the northeast end of the Location, facing south. Photos shows BMPs to stabilize/protect the cut slopes, and prevent off-site sediment transport are missing or insufficient.

Inspection Photos
Operator Name: LARAMIE ENERGY LLC - 10433
Location ID: 335647



Photo 21: Photo taken from the southeast end of the Location, facing north. Photos shows BMPs to stabilize/protect the cut slopes, and prevent off-site sediment transport are missing or insufficient.

Inspection Photos
Operator Name: LARAMIE ENERGY LLC - 10433
Location ID: 335647



Photo 22: Photo taken from the back end of the southern tank. Leaking was observed from equipment.