

# Pulsed Neutron Emulated OH Log



Company:	TEP Rocky Mountain LLC
Well:	Federal PA 14-23
Field:	Parachute
County:	Garfield
State:	Colorado
API:	05-045-24301
Location:	Sec: 26 Twp: 6S Rng: 95W
Date PN Data Logged:	15-OCT-2020
Date Processed:	18-OCT-2020
PN Data Recorded By:	A. Ellsworth
Log Analyst:	J. Sichel
Elevations:	KB: 5510.3' DF: 5509.3' GL: 5486.3'

Any interpretation of logs or survey, either through optical or electronic processing means or otherwise, or any recommendation or description of any reservoir based on such interpretations of other data, are opinions based upon measurements, assumptions and empirical relationships, which inferences and assumptions are not incapable of error. We cannot and do not guarantee the accuracy, correctness or completeness of such interpretations, recommendations or descriptions and Company agrees that we shall not be liable or responsible for any loss, cost, damage or expense incurred or sustained by Company resulting directly or indirectly therefrom. Under no circumstances should any such interpretation, recommendation or description be relied upon as the basis for any procedure conducted in or on a well which involves any risk to the safety of personnel, equipment or venture. Company shall always have full responsibility for such decisions and for all decisions concerning other procedures relating to drilling, completion or production operations.

Casing Record	Size (in)	Weight (lbs/ft)	Grade	Top	Bottom
Surface	9 5/8	36	J-55	Surface	1124 FT
Production	4 1/2	11.6	P-110	Surface	9139 FT

This well is an Offset Well  
 Training Well: Tri State Trucking PA 42-26  
 Emulated using Schlumberger OH data provided by the client and  
 Reliance Hunter RAS PN data  
 Depth referenced to Reliance RBL dated 15-OCT-2020  
 Density Porosity Matrix = 2.68 g/cc  
 Emulation results may be affected by areas of poor bond  
 Emulated results may be affected by washouts and quality of OH data  
 Thank you for choosing Reliance Oilfield Services, LLC!!



## Main Pass

Well: **Federal PA 14-23**

Normalized Gamma Ray 0 gAPI 150	Reference (FT) 1:240	Emulated Resistivity 0.2 ohm.m 2000	Emulated Neutron Porosity	
			0.3 FRAC -0.1	Emulated Density Porosity
			0.3 FRAC -0.1	



**5025**

**5050**

**5075**

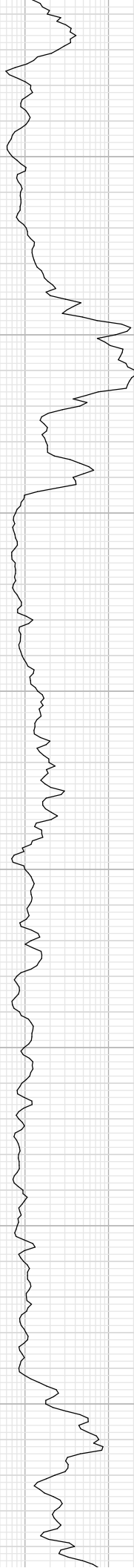
**5100**

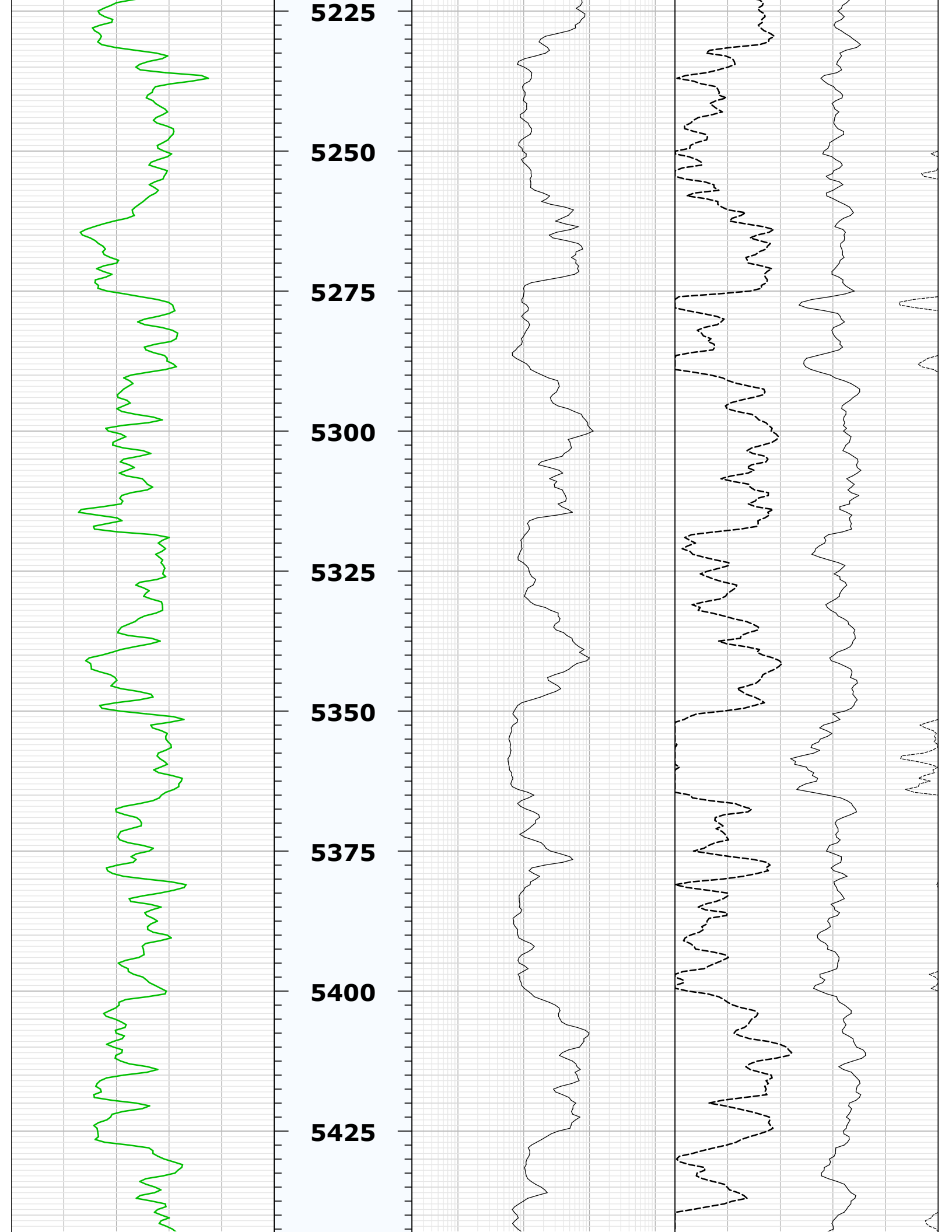
**5125**

**5150**

**5175**

**5200**







5450

5475

5500

5525

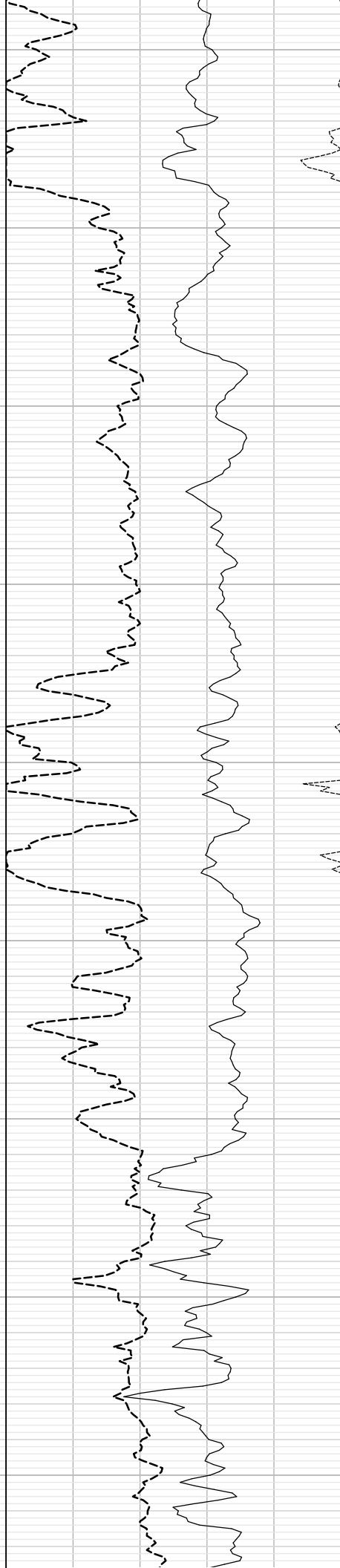
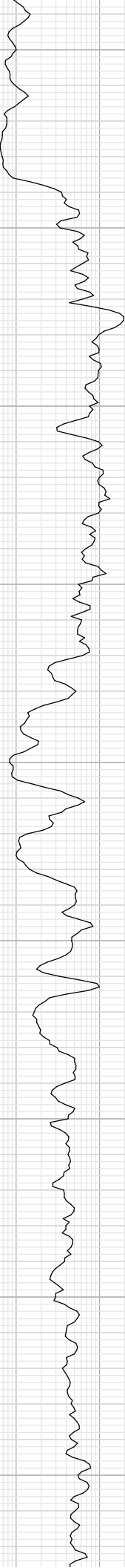
5550

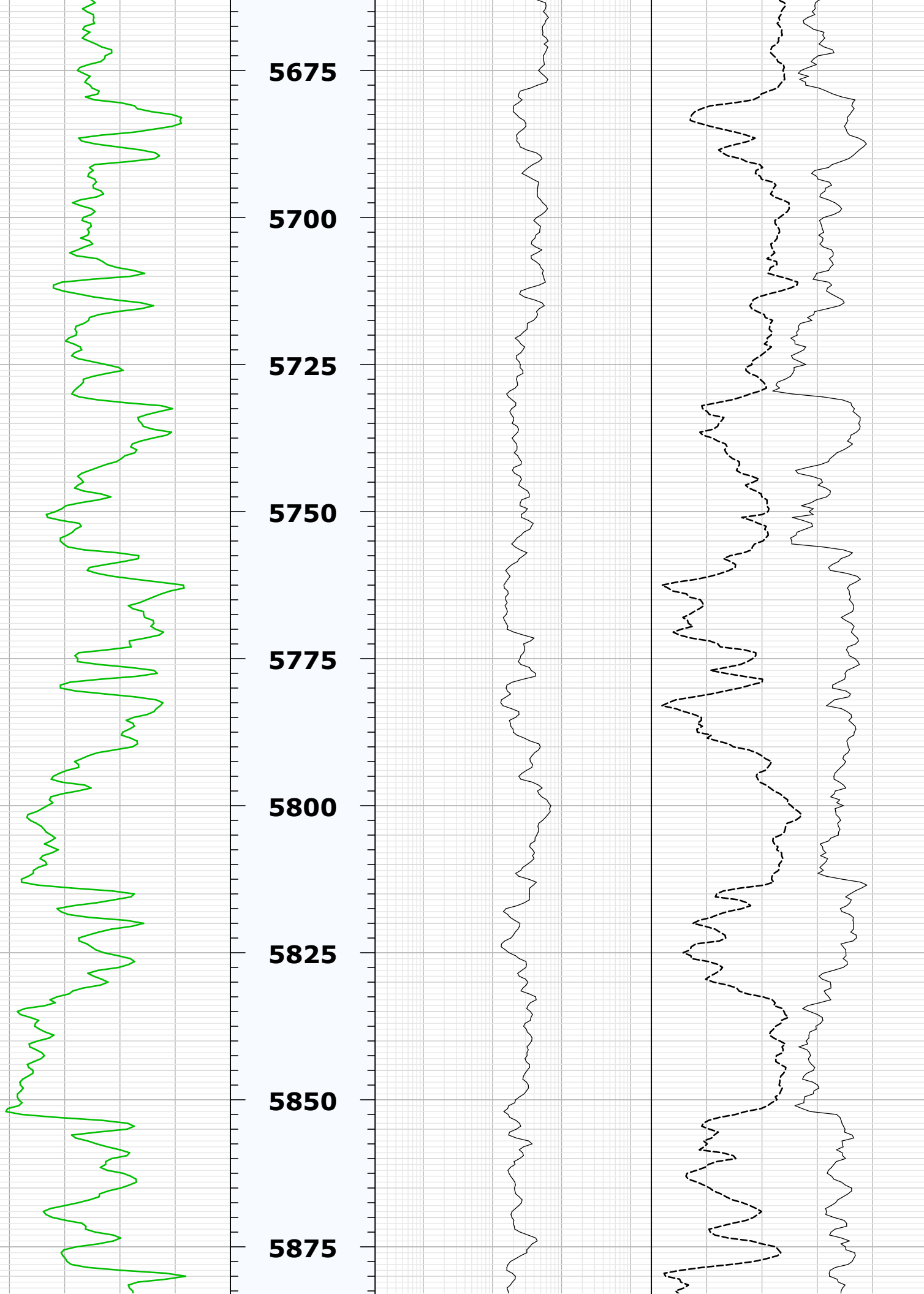
5575

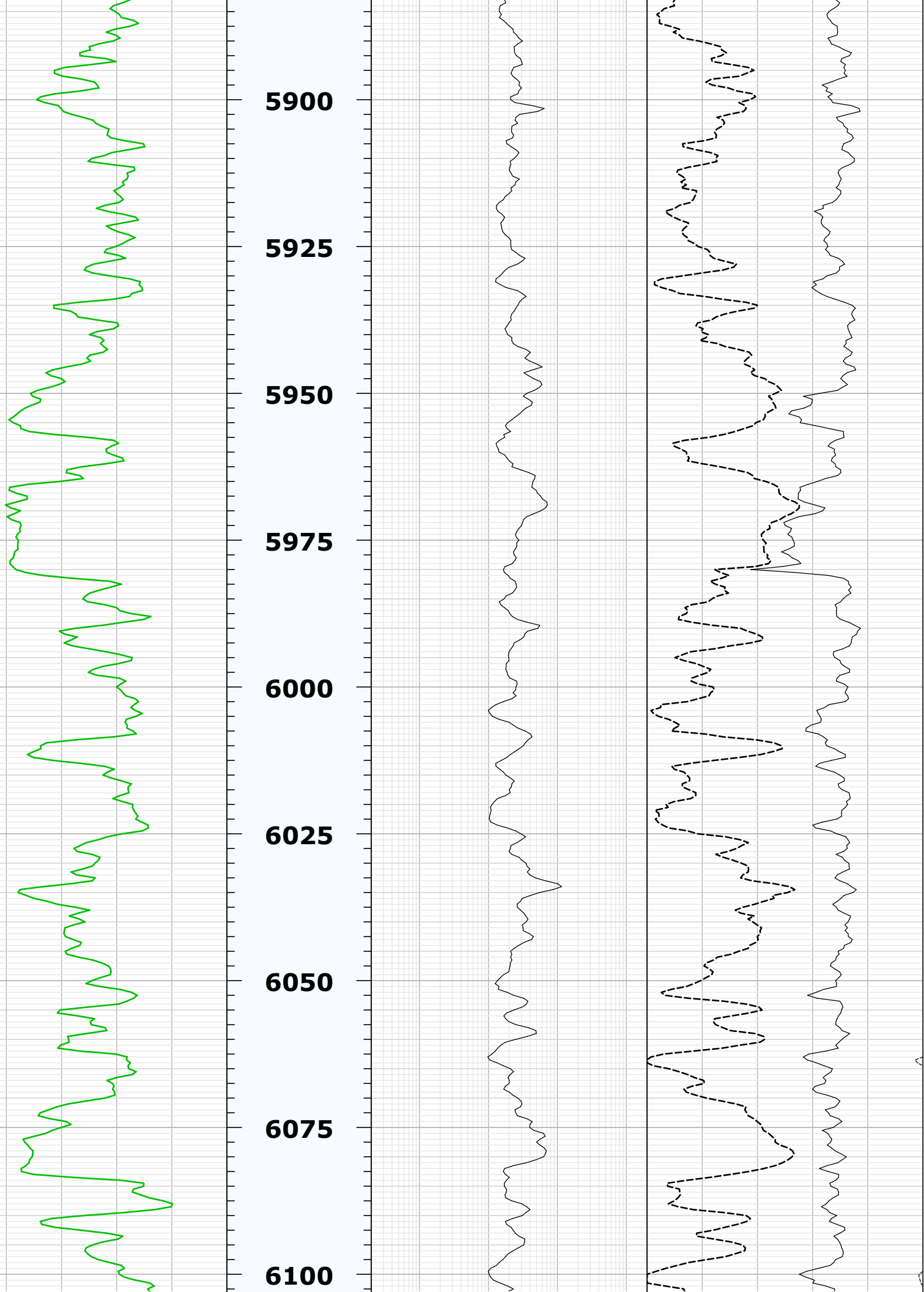
5600

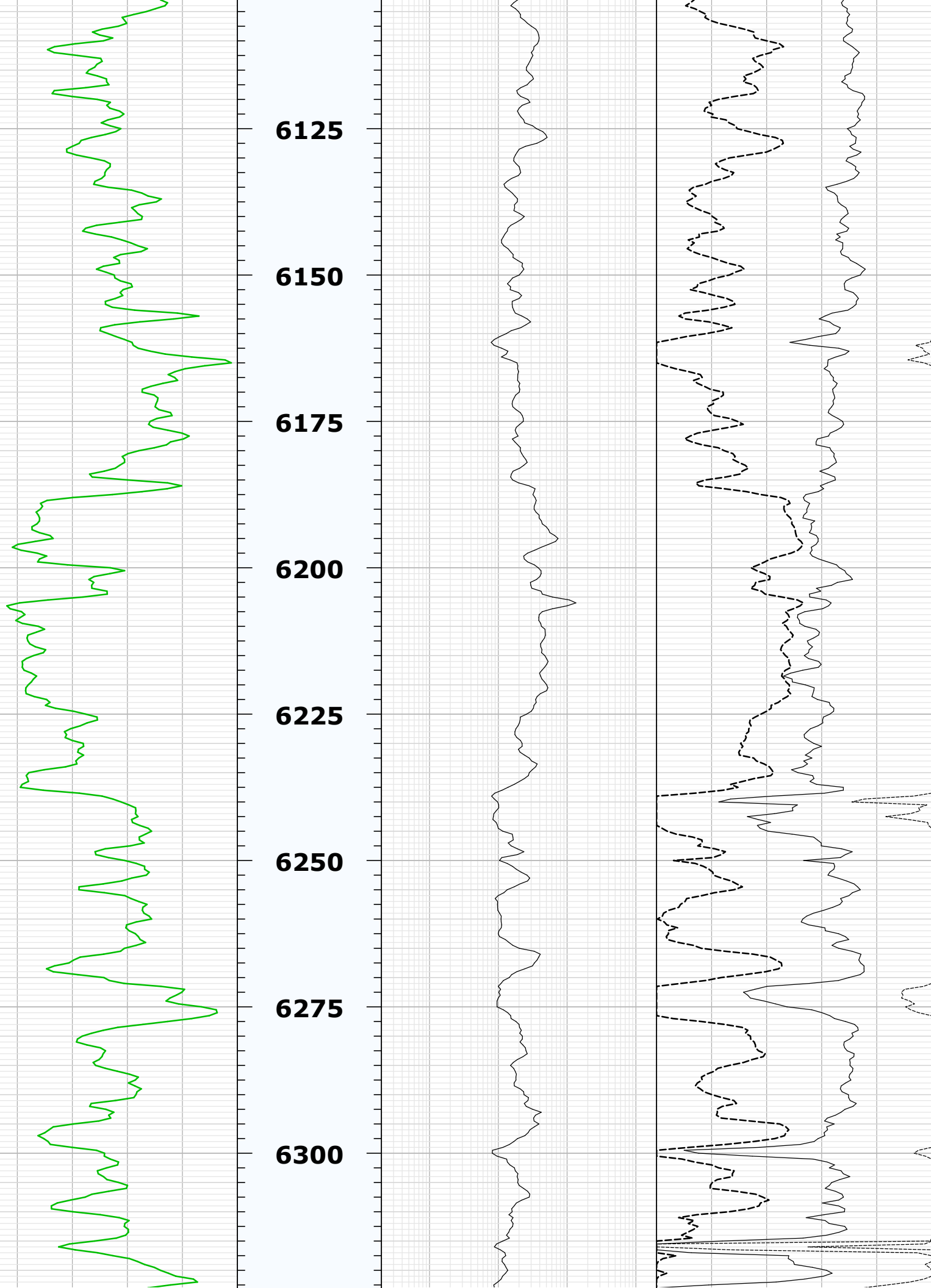
5625

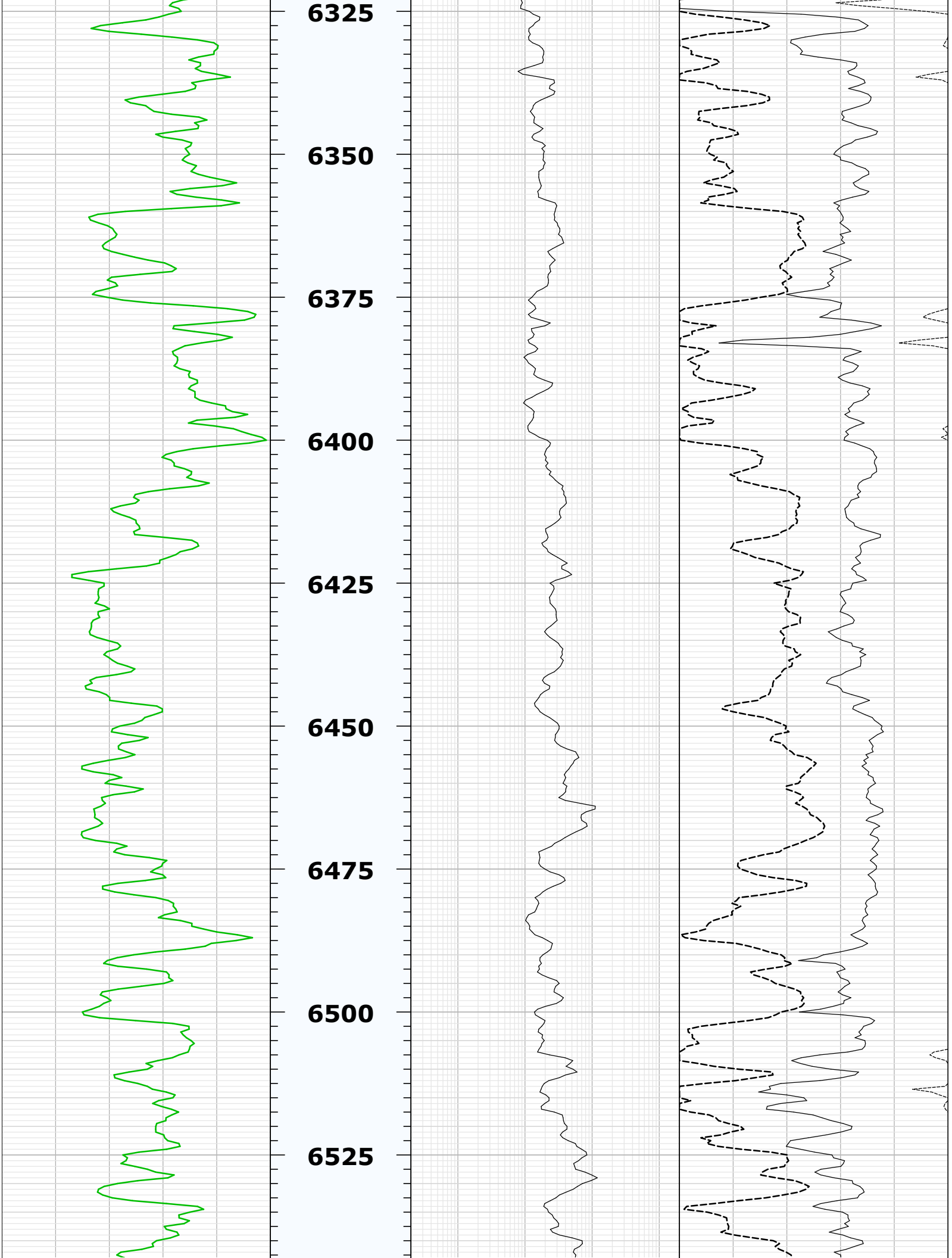
5650



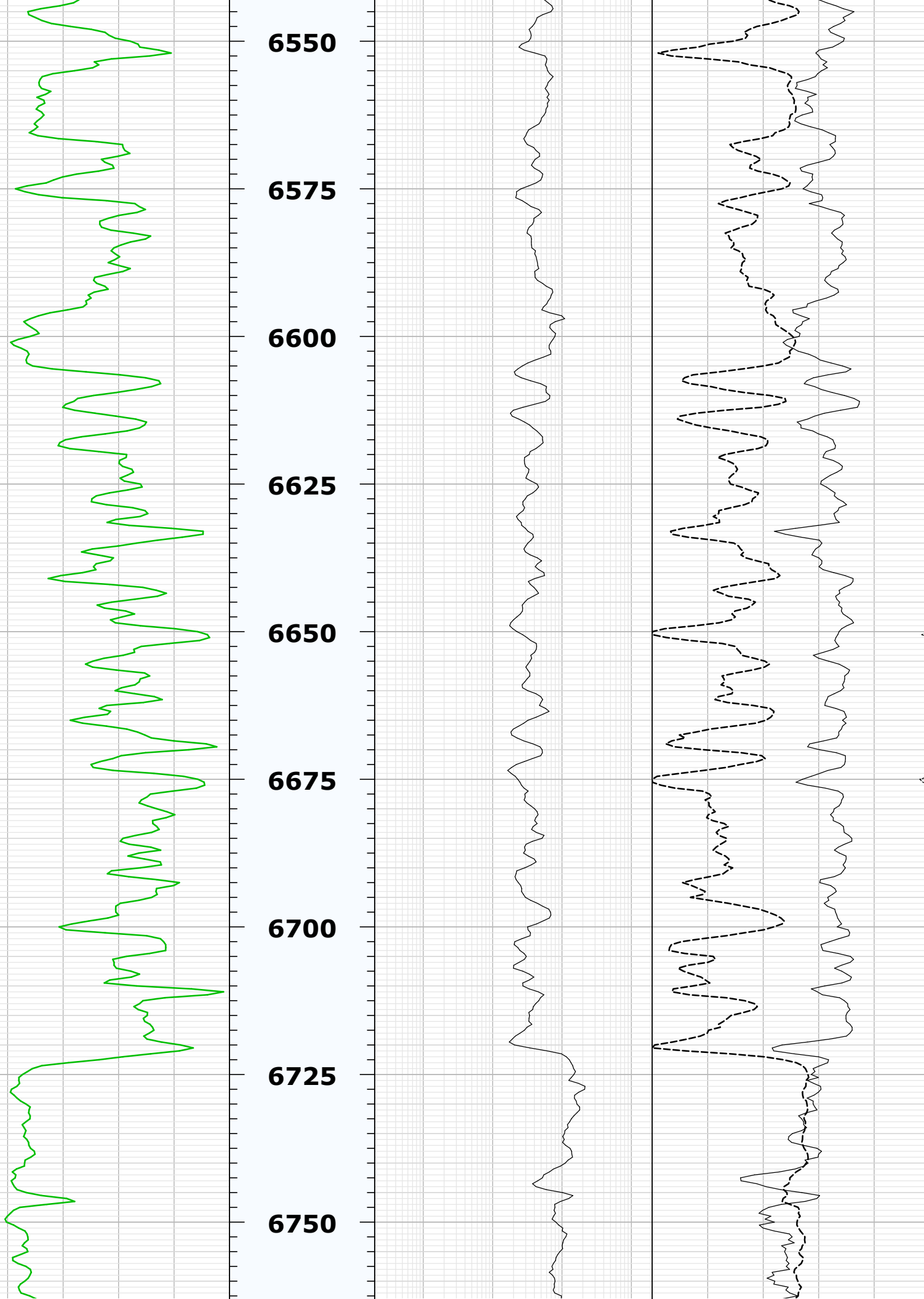


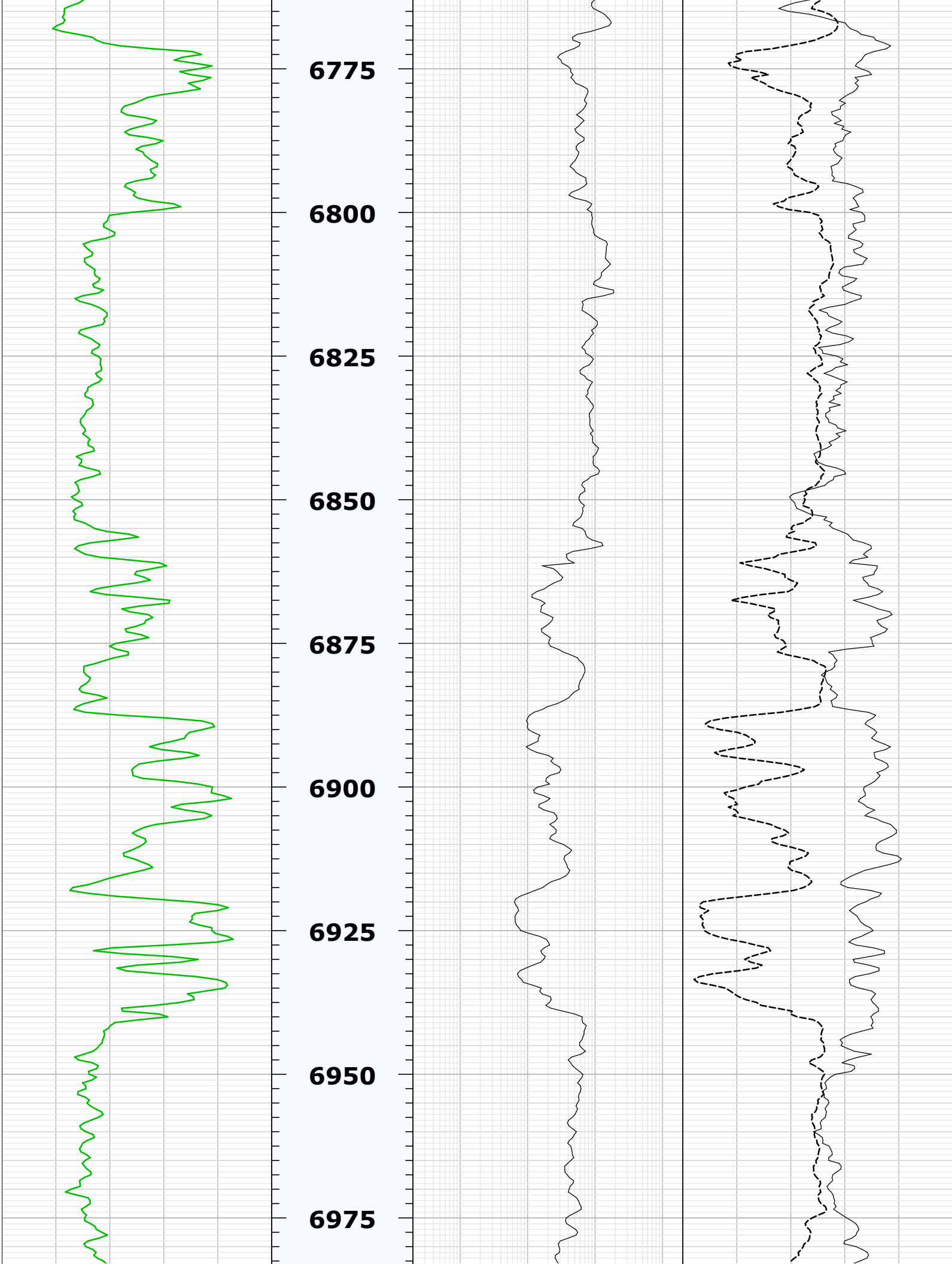


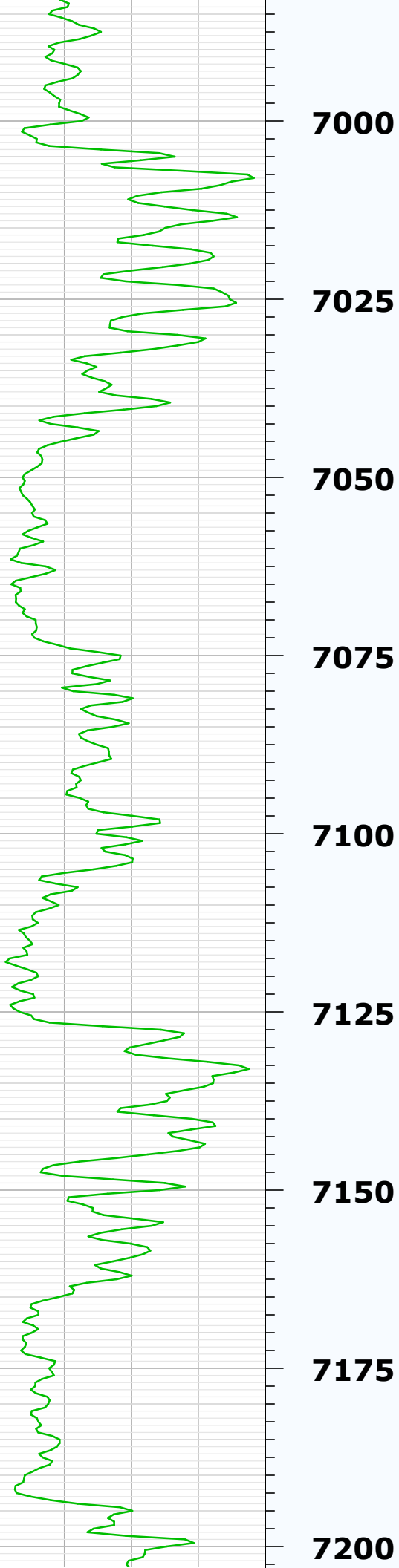












7000

7025

7050

7075

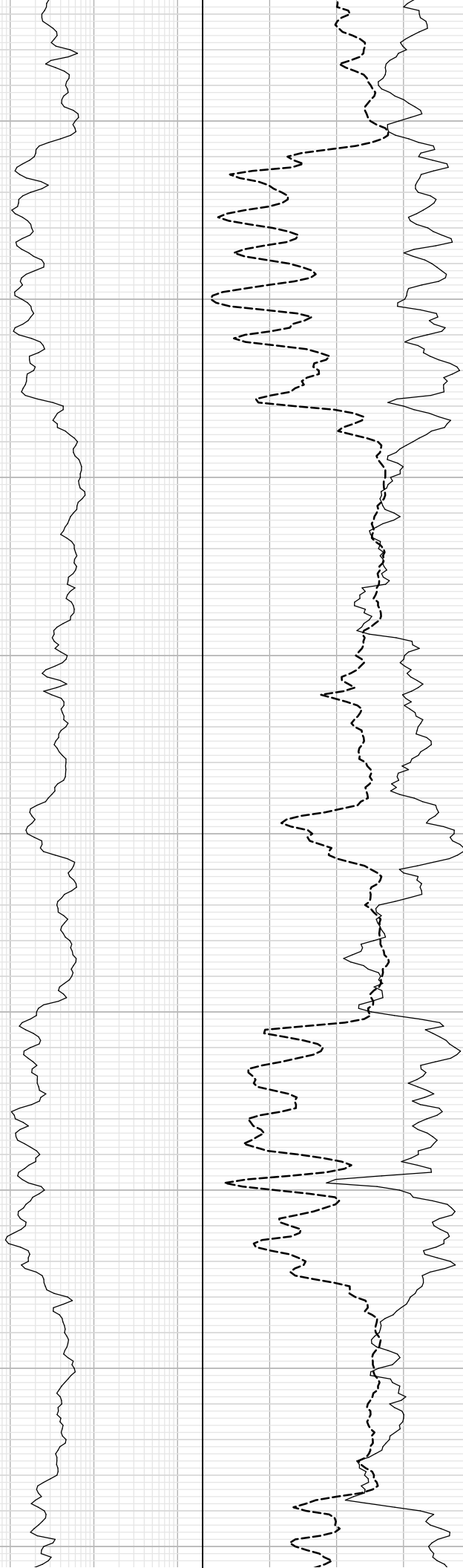
7100

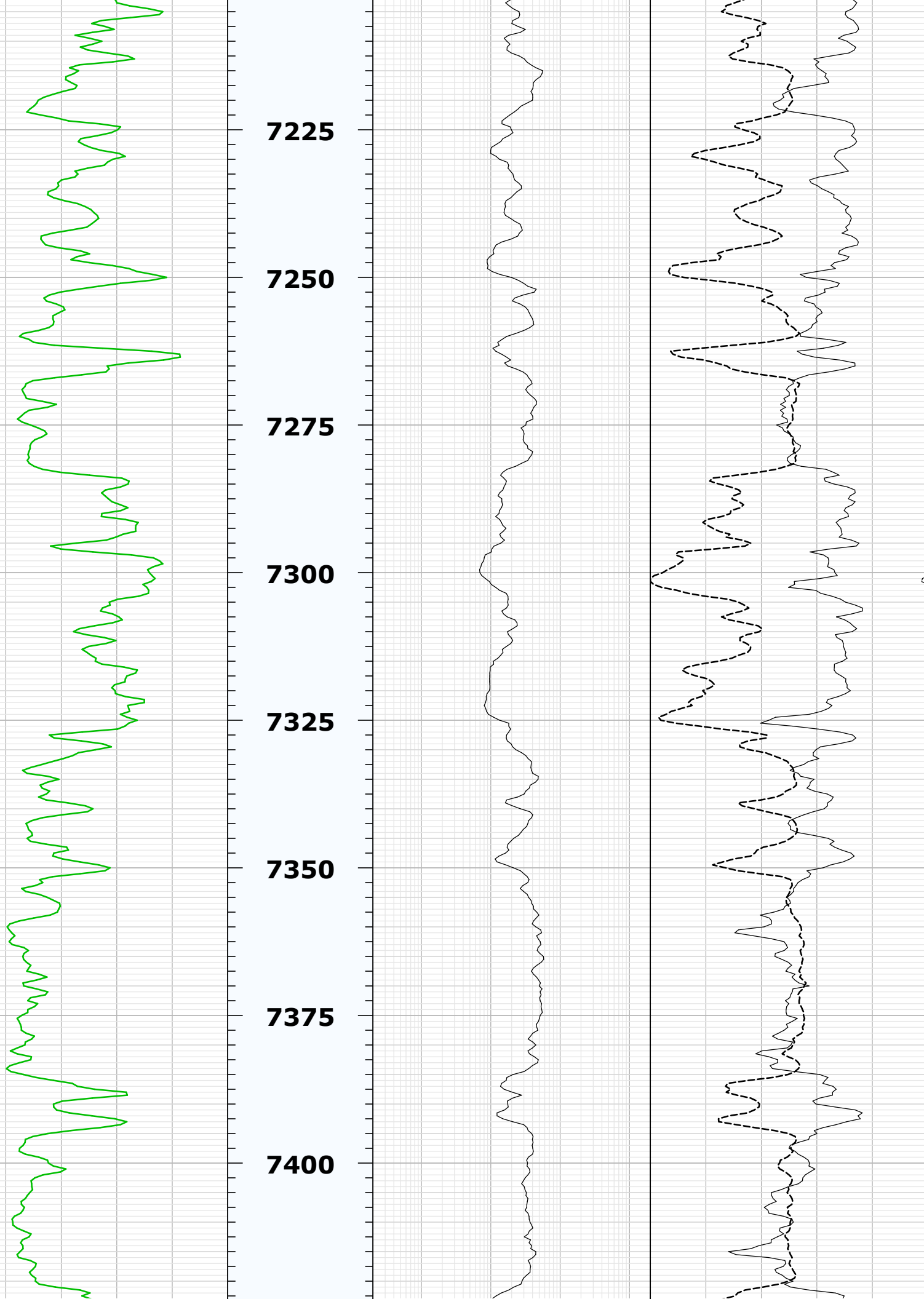
7125

7150

7175

7200







**7425**

**7450**

**7475**

**7500**

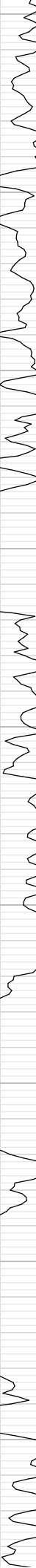
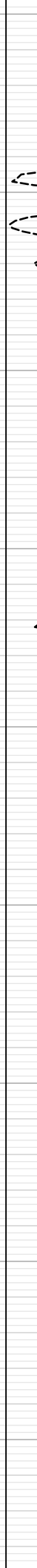
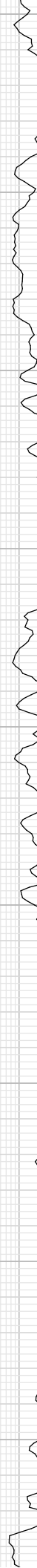
**7525**

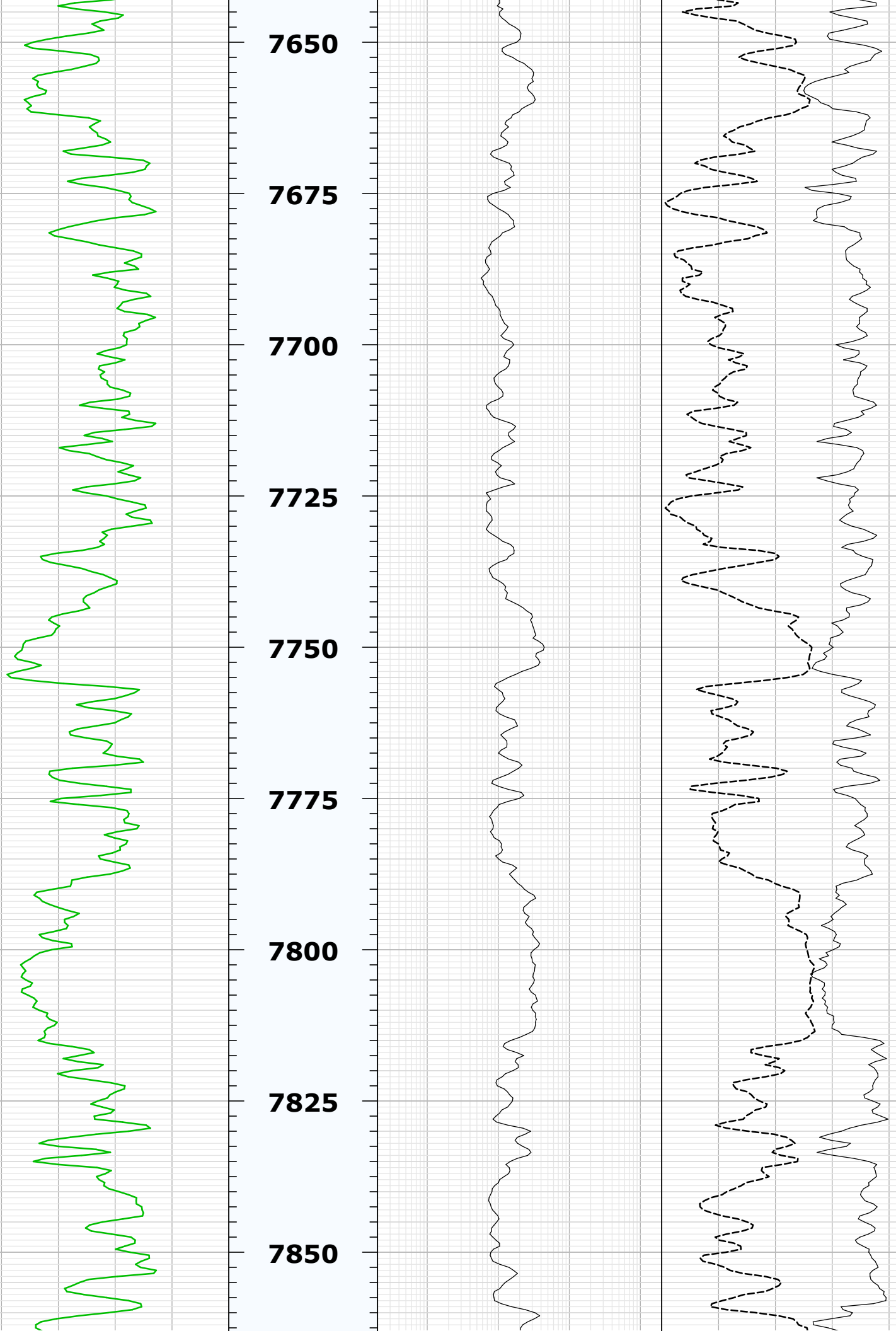
**7550**

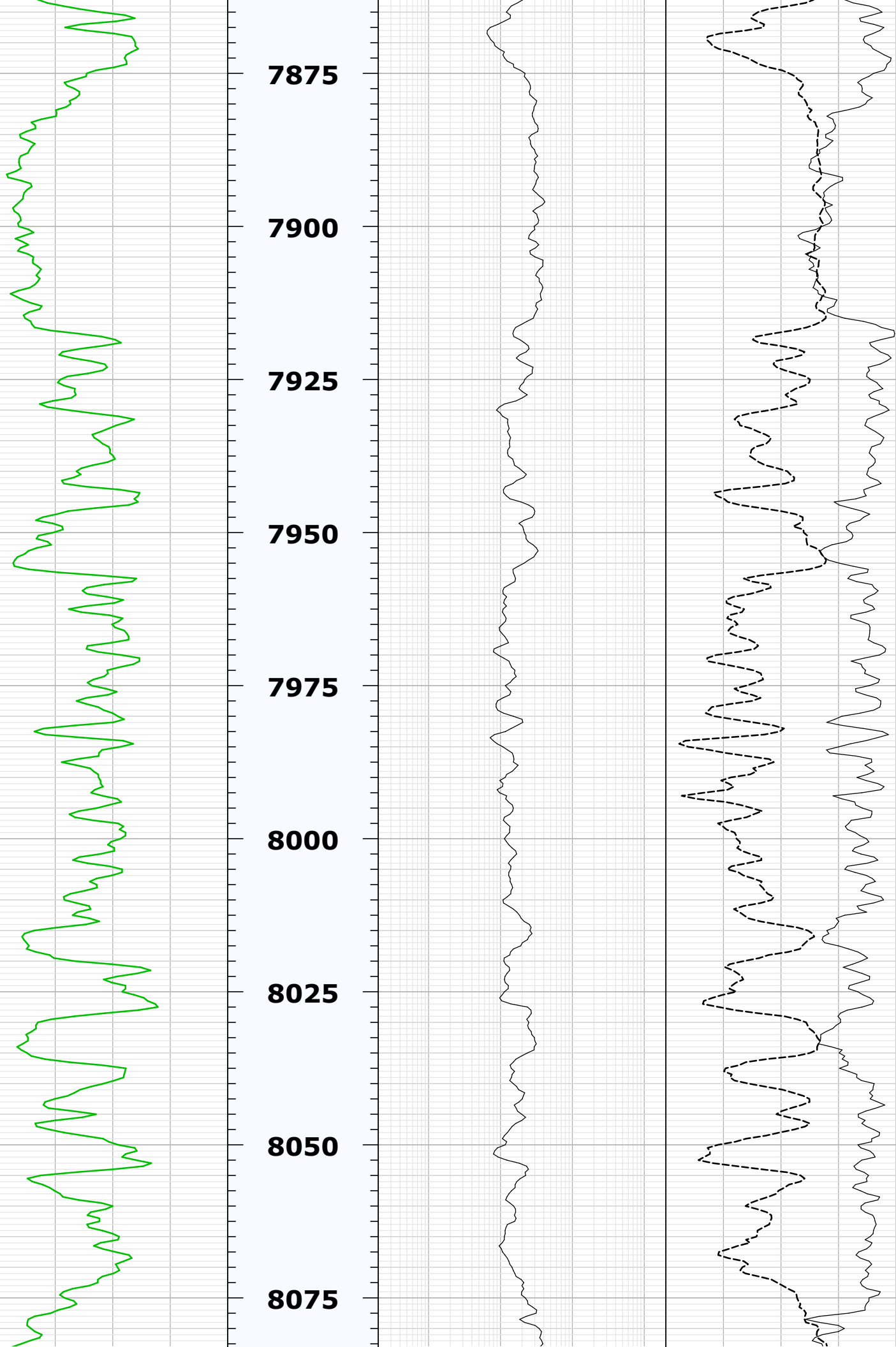
**7575**

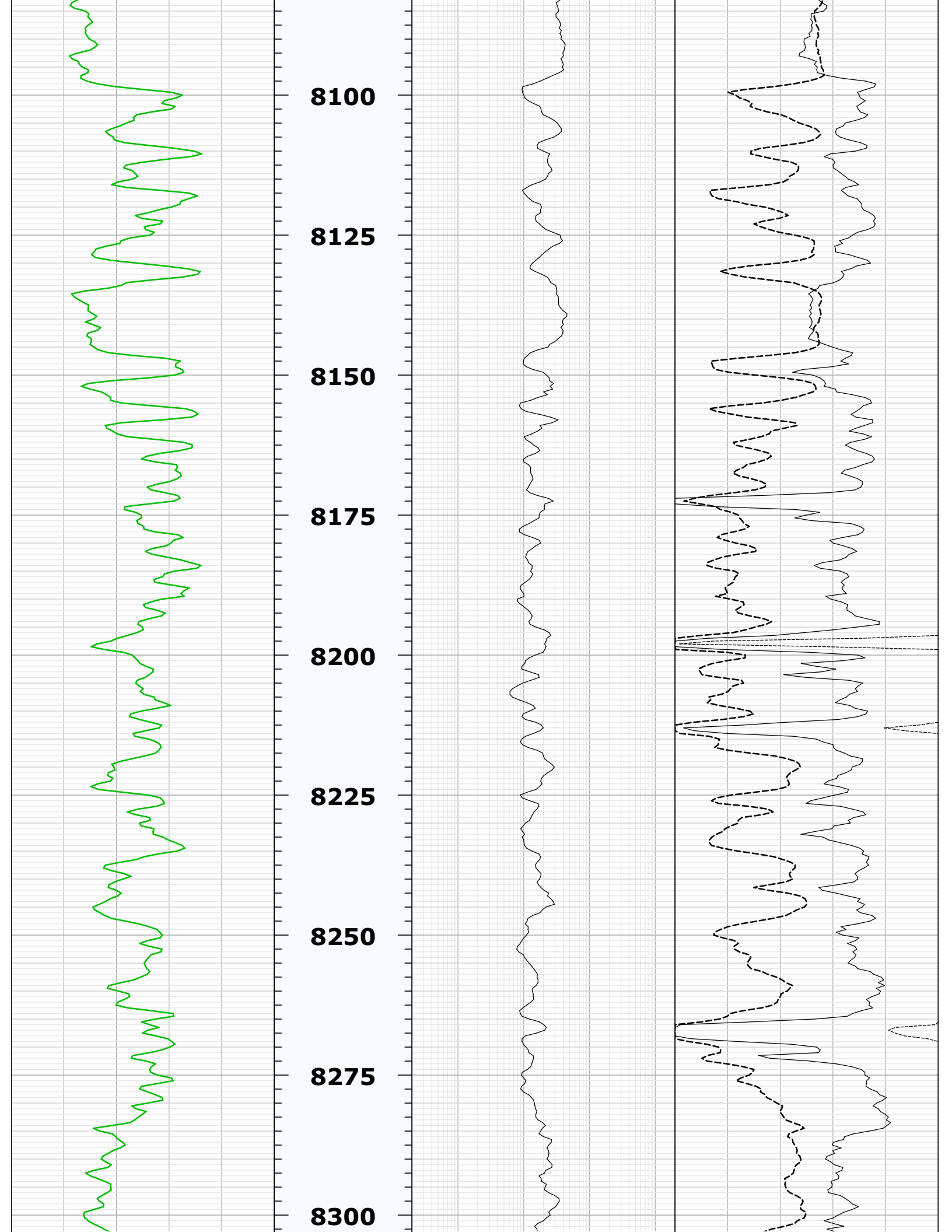
**7600**

**7625**













**8325**

**8350**

**8375**

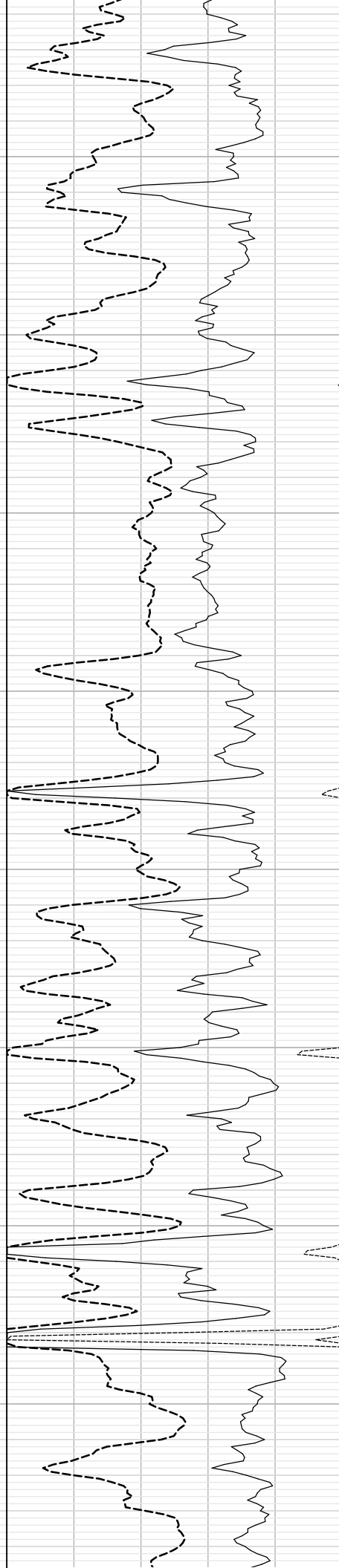
**8400**

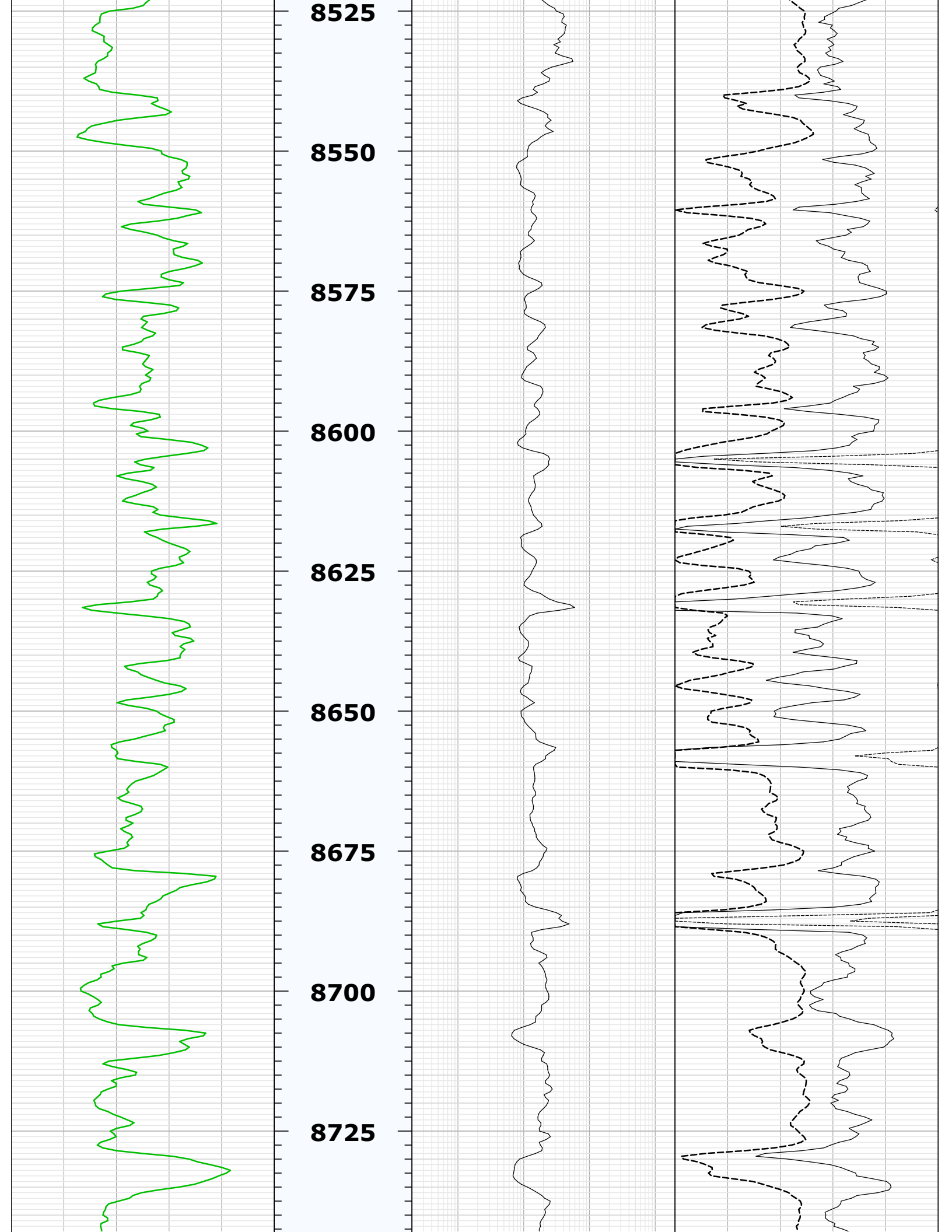
**8425**

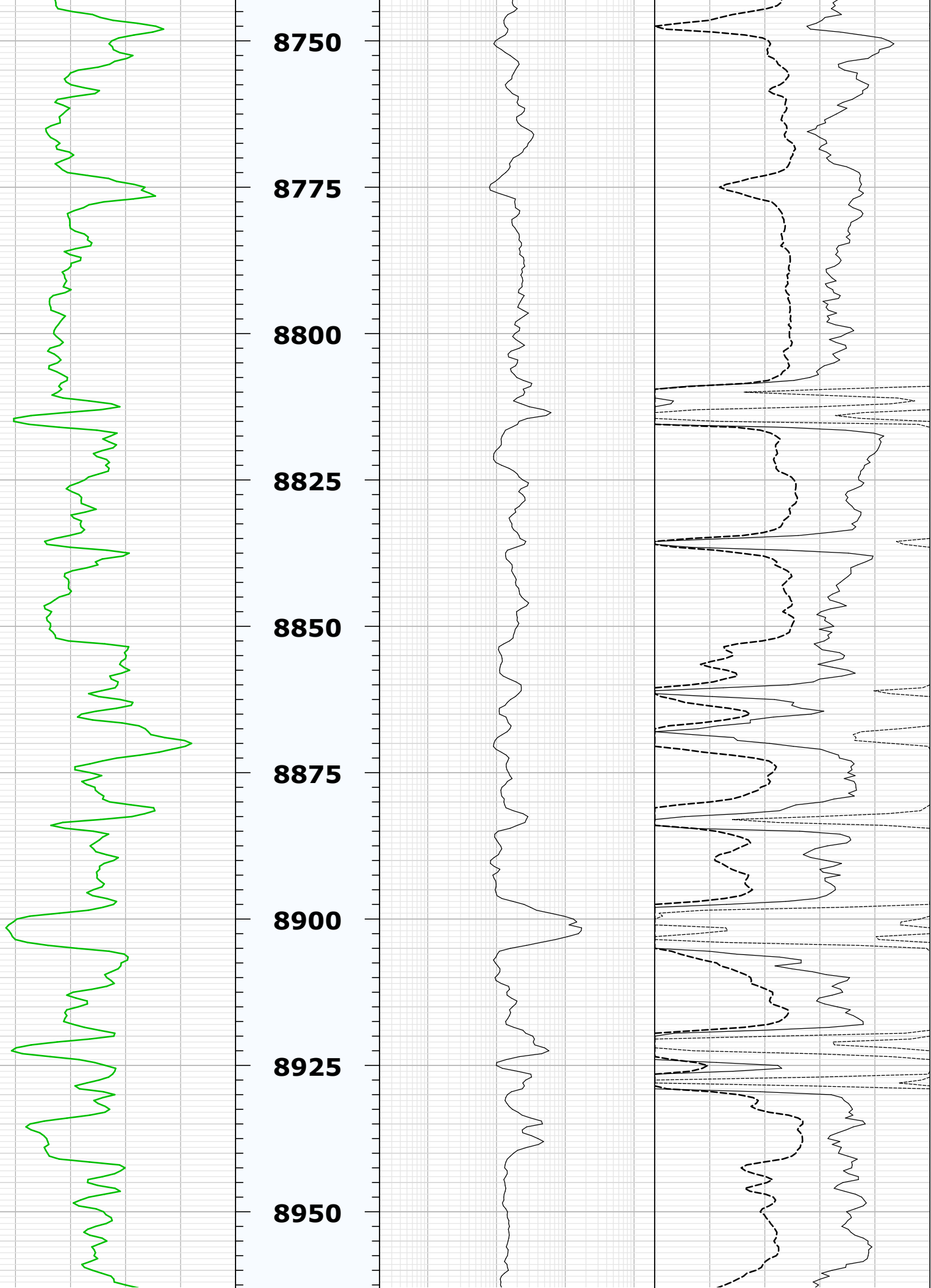
**8450**

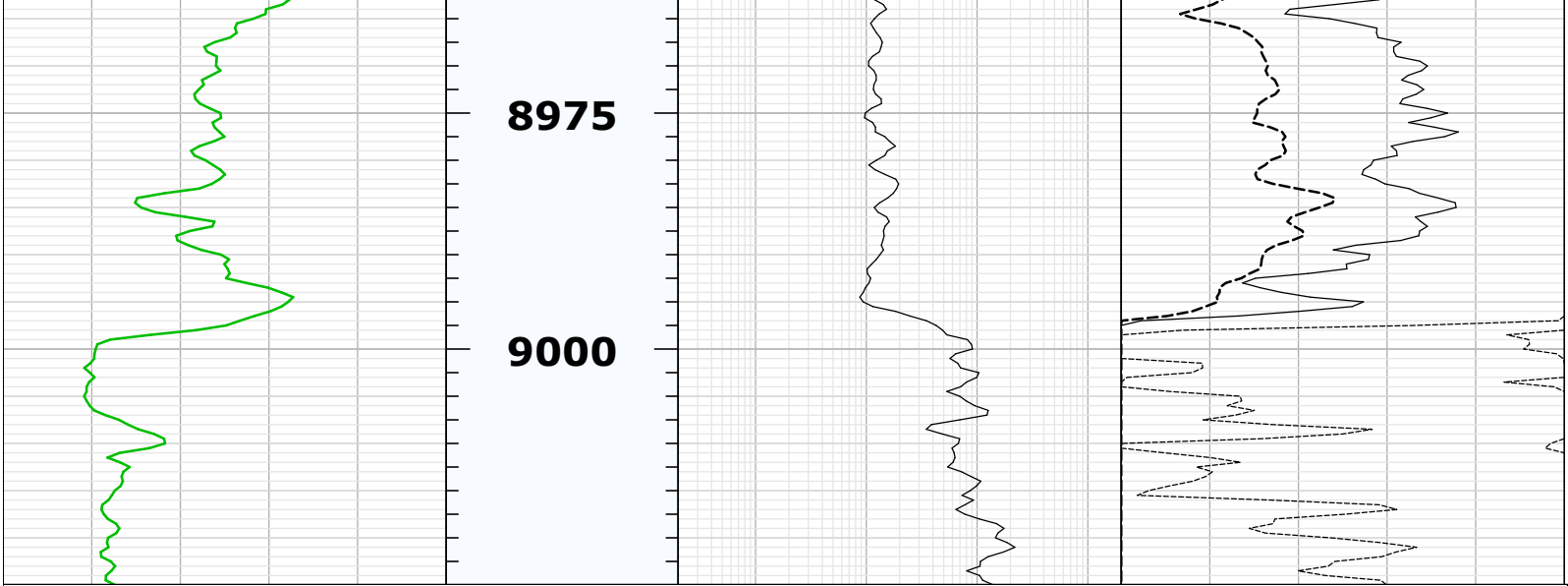
**8475**

**8500**









Company: TEP Rocky Mountain LLC  
Well: Federal PA 14-23  
Field: Parachute  
County: Garfield  
State: Colorado

