



Mr. Phillip Porter
PDC Energy Inc.
4000 Burlington Avenue
Evans, Colorado 80620

October 29, 2020

**RE: Vegetation Assessment Report (Final Reclamation Completion Notice)
COGCC Location Information: P J-65N64W /8NESW (Location I.D. 328535)
Operator Location Information: P J 2 Well (API # 05-123-16110)
PDC Energy Inc. (Operator: 69175)**

Dear Mr. Porter:

Apex Companies, LLC (Apex) is presenting this letter to PDC Energy Inc. (PDC) documenting the results of a vegetation assessment that demonstrates successful completion of final reclamation efforts, per Colorado Oil & Gas Conservation Commission (COGCC) Rule 1004, on the above-referenced location. This conclusion is based on site visits, project correspondence, site documentation, and the completed vegetation assessment. Attached is a topographic location map and a vegetation survey site map with additional location information.

On October 3, 2019, modified step-point vegetation surveys were conducted on the reclaimed portion of the well pad, and on adjacent reference areas. Foliar and basal cover, along with non-vegetated and noxious weed occurrences, were documented; 100 survey points were recorded within the reclaimed disturbance and 100 survey points were recorded within the reference area. Vegetation survey points were identified using a bullseye target tool. The survey methodology employed by Apex is based on the *step-point method* described in an interagency technical reference published by the Bureau of Land Management (BLM, 1996).

Noxious weeds listed by the Colorado Department of Agriculture were excluded from the percent of reference vegetative coverage calculations, per COGCC Rule 1004.d. To ensure reclamation vegetative composition meets the standards of PDC and the COGCC, undesirable cover is also quantified in the attached Summary of Field Data. Undesirable cover includes species identified by the United States Department of Agriculture (USDA) Natural Resource Conservation Service (NRCS) as introduced and not native to the lower 48 states, and not considered beneficial for reclamation purposes.

Survey results indicate the reclaimed area has a foliar vegetative cover that is 104.3% of the reference area. Vegetation survey results are provided in the attached Summary of Field Data and Field Data Tables. Based on the results of the survey, final reclamation, as defined by COGCC rules and regulations, has been achieved. Photographs exhibiting current site conditions are also attached along with the site map illustrating the vegetation survey photo points and transect locations.

Apex appreciates the opportunity to provide environmental consulting services on this project. Should you have any questions or require additional information, please do not hesitate to contact me.

Sincerely,
Apex Companies, LLC



Carolyn Craveiro de Sá
Environmental Scientist
720-537-5478
Carolyn.CraveirodeSa@apexcos.com

Attachments:

1. Vegetation Survey - Summary of Field Data
2. Topographic Location Map
3. Vegetation Survey Site Map
4. Vegetation Assessment Photo Log
5. Vegetation Survey (Field Data Tables)

Reference:

United States (U.S.) Department of Agriculture (USDA), Forest Service (USFS), Natural Resource Conservation Service (NRCS) and U.S. Department of the Interior (USDOI) Bureau of Land Management (BLM). "Sampling Vegetation Attributes, Interagency Technical Reference, 1996 (Revised in 1997, and 1999)". USDOI BLM Technical References #1734-4.

Date Accessed: August 2, 2017

Vegetation Survey - Summary of Field Data

Client	PDC Energy Inc.
Operator Location Information (API)	P J 2 Well (API # 05-123-16110)
Assessment Date	10/3/2019
Inspector Name	Adam Roll

Based on the survey methodology, the foliar cover (%) in each survey area is calculated by summing the total number of foliar occurrences, excluding noxious weeds, and dividing by the total occurrences in the transects. For this location:

Reclaim Area (Foliar Cover)	Reference Area (Foliar Cover)
$(71 + 4 + 0) / 177 = 42.4\%$	$(71 + 7 + 0) / 192 = 40.6\%$

For the purposes of this assessment, the undesirable foliar cover (%) is calculated by summing the total number of undesirable* foliar occurrences and dividing by the total occurrences in the transects, excluding noxious weeds. For this location:

Reclaim Area (Undesirable Foliar Cover)	Reference Area (Undesirable Foliar Cover)
$1 / (71 + 4 + 0) = 1.3\%$	$2 / (71 + 7 + 0) = 2.6\%$

The percent of reference used to evaluate the reclamation area for compliance with COGCC Rule 1003.e(2) is calculated by dividing the foliar cover (%) in the reclaim area by the foliar cover (%) in the reference area. For this location:

Percent of Reference (Reclaim % / Reference %)
$42.4\% / 40.6\% = 104.3\%$

Reclaim Area Vegetation	Reference Area Vegetation
Desirable Foliar Cover 41.81%	Desirable Foliar Cover 39.58%
Desirable Basal Cover 33.33%	Desirable Basal Cover 41.15%
Non Vegetated 20.34%	Non Vegetated 8.33%
Noxious Weeds Cover 3.95%	Noxious Weeds Cover 9.90%
Undesirable Cover 0.56%	Undesirable Cover 1.04%
Quality Assurance Total <i>(must equal 100)</i> 100%	Quality Assurance Total <i>(must equal 100)</i> 100%
Grass (Foliar) 71	Grass (Foliar) 71
Forb (Foliar) 4	Forb (Foliar) 7
Shrubs (Foliar) 0	Shrubs (Foliar) 0
Noxious Weed (Foliar) 2	Noxious Weed (Foliar) 14
Grass (Basal) 57	Grass (Basal) 78
Forb (Basal) 2	Forb (Basal) 1
Shrubs (Basal) 0	Shrubs (Basal) 0
Noxious Weed (Basal) 5	Noxious Weed (Basal) 5
Bare Ground 3	Bare Ground 2
Litter 28	Litter 14
Rock 5	Rock 0
Total Occurrences 177	Total Occurrences 192

*Undesirable cover includes species identified by the United States Department of Agriculture (USDA) Natural Resource Conservation Service (NRCS) as introduced and not native to the lower 48 states, and not considered beneficial for reclamation purposes.

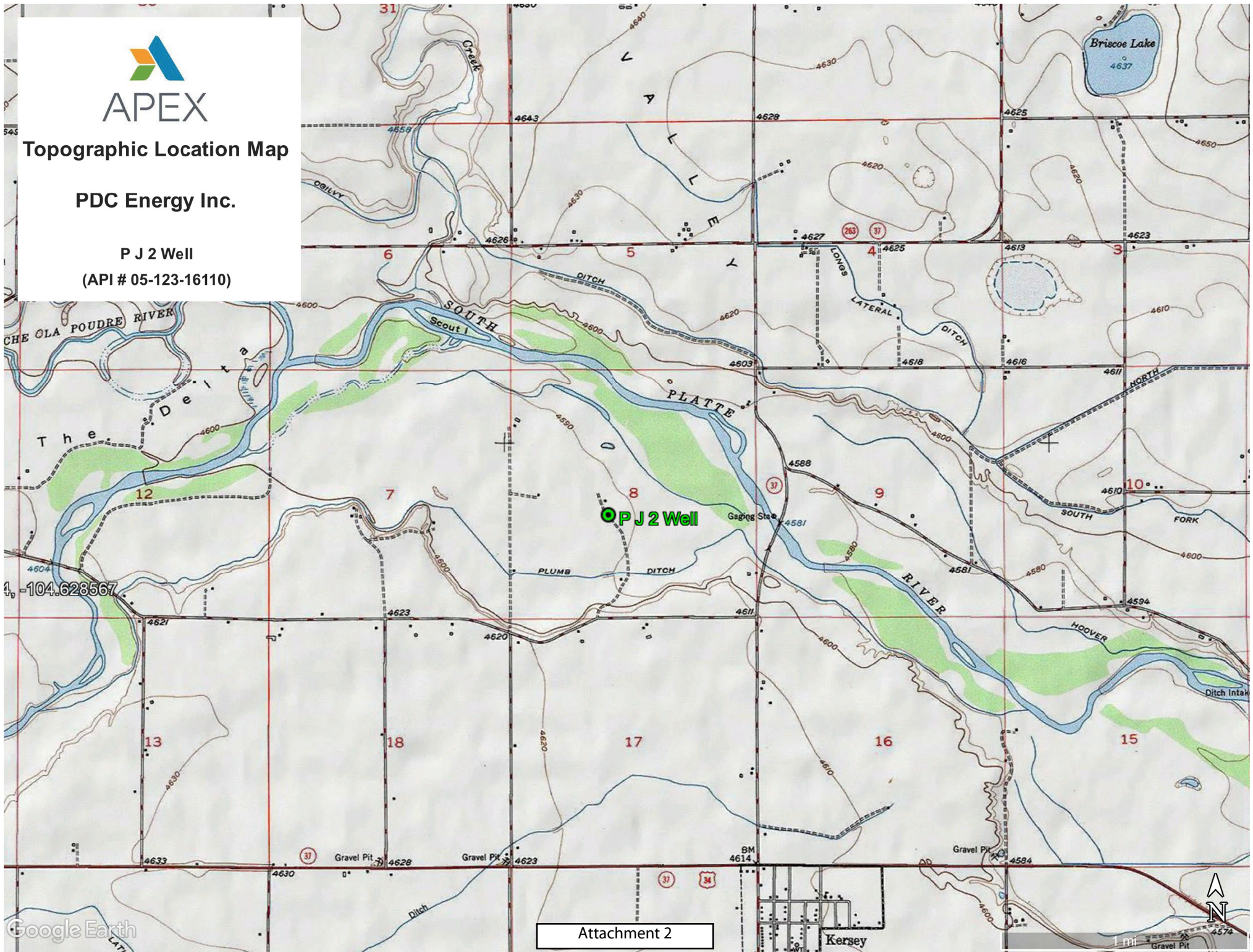




Topographic Location Map

PDC Energy Inc.

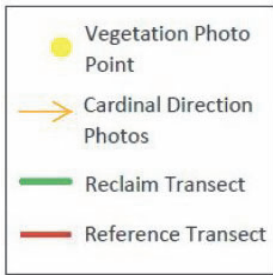
P J 2 Well
(API # 05-123-16110)





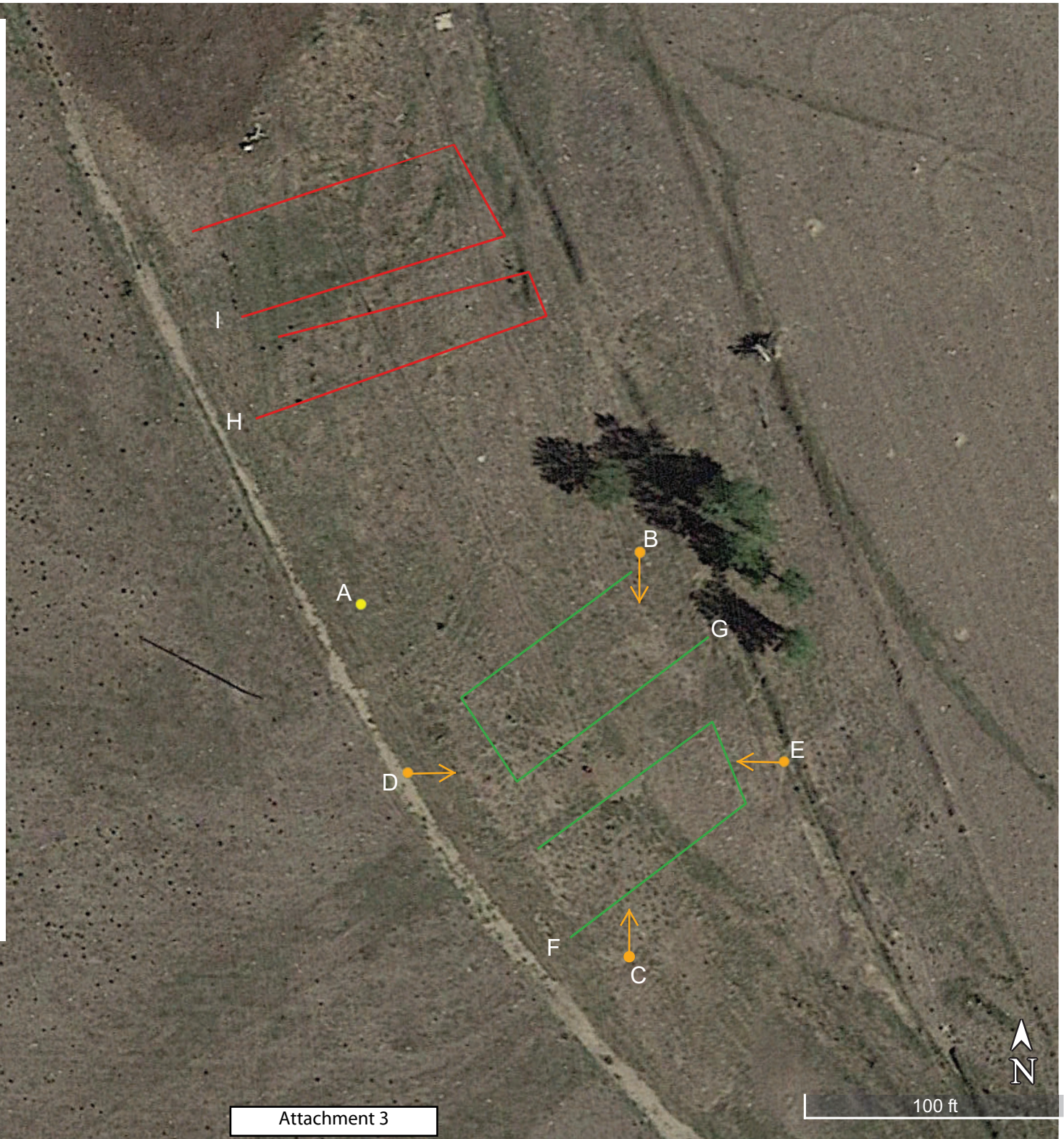
Vegetation Survey Site Map

P J 2 Well
(API # 05-123-16110)



Legal Description: NESW, Sec. 8, T5N-R64W
Lat./Long.: 40.412355 / -104.575626
County: Weld
Land Use: Non-Cropland
Reference Area Foliar Cover: 40.6%
Reclaim Area Foliar Cover: 42.4%
Cover Ratio (Reclaim/Reference): 104.3%
Inspector: Adam Roll
Assessment Date: 10/4/2019
Aerial Imagery Date: 9/12/2018

**Please reference coordinate disclaimer on the photo log pages.*



Vegetation Assessment Photo Log

Client - PDC Energy Inc.

Date Completed - 10/03/2019

Operator Location ; `Xad_ Sf[a` /3B;fi- P J 2 Well (05-123-16110)



Photo Point A: Edge of Disturbance - Facing East-Northeast

*Geographic coordinates provided in the borders of all attached photos are based on points identified by the mobile phone or tablet which collected the photo. Coordinate accuracy in this format is typically no greater than 5 meters, while the points illustrated in the site diagram associated with this submittal were collected with a high accuracy GPS unit with sub-meter accuracy. Discrepancies between the site diagram and photo coordinates will exist.

Vegetation Assessment Photo Log

Client - PDC Energy Inc.

Date Completed - 10/03/2019

Operator Location ;` Xad_ Sf[a` /3B;fi- P J 2 Well (05-123-16110)



Photo Point B: North of Disturbance - Facing South



Photo Point C: South of Disturbance - Facing North



Photo Point D: West of Disturbance - Facing East



Photo Point E: East of Disturbance - Facing West

Vegetation Assessment Photo Log

Client - PDC Energy Inc.

Date Completed - 10/03/2019

Operator Location ; `Xad_ Sf[a` /3B;fi- P J 2 Well (05-123-16110)



Photo Point A: Reclaim Area Vegetation - Facing East-Southeast

Vegetation Assessment Photo Log

Client - PDC Energy Inc.

Date Completed - 10/03/2019

Operator Location ; `Xad_Sf[a` /3B;fi P J 2 Well (05-123-16110)



Transect Photo F: Reclaim Transect 1 - Facing North-Northeast



Transect Photo G: Reclaim Transect 2 - Facing Southwest

Vegetation Assessment Photo Log

Client - PDC Energy Inc.

Date Completed - 10/03/2019

Operator Location ;` Xad_ Sf[a` /3B;fi- P J 2 Well (05-123-16110)



Photo Point A: Reference Area Vegetation Photo Point - Facing North

Vegetation Assessment Photo Log

Client - PDC Energy Inc.

Date Completed - 10/03/2019

Operator Location ; `Xad_Sf[a` /3B;fi P J 2 Well (05-123-16110)



Transect Photo H: Reference Transect 1 - Facing East-Northeast



Transect Photo I: Reference Transect 2 - Facing East-Northeast

Vegetation Survey (Field Data Table)

Client: PDC Energy Inc.
Operator Location Information (API): P J 2 Well (API # 05-123-16110)
Transect ID: Reclaim Transect 1
Transect Length: 198 ft.
Assessment Date: 10/3/2019
Inspector: Adam Roll

Point	Foliar	Species	Basal	Species
1	Grass	<i>Distichlis spicata</i>	Non-Vegetative	Litter
2	Grass	<i>Eragrostis trichodes</i>	Grass	<i>Eragrostis trichodes</i>
3	Grass	<i>Eragrostis trichodes</i>	Non-Vegetative	Litter
4	Grass	<i>Sporobolus airoides</i>	Grass	<i>Sporobolus airoides</i>
5	Grass	<i>Distichlis spicata</i>	Grass	<i>Distichlis spicata</i>
6			Non-Vegetative	Litter
7			Non-Vegetative	Rock
8			Non-Vegetative	Bare Ground
9	Grass	<i>Buchloe dactyloides</i>	Grass	<i>Buchloe dactyloides</i>
10			Non-Vegetative	Litter
11			Non-Vegetative	Litter
12	Grass	<i>Buchloe dactyloides</i>	Grass	<i>Buchloe dactyloides</i>
13	Grass	<i>Elymus trachycaulus</i>	Noxious Weed C	<i>Convolvulus arvensis</i>
14	Grass	<i>Distichlis spicata</i>	Grass	<i>Distichlis spicata</i>
15	Grass	<i>Sporobolus airoides</i>	Non-Vegetative	Litter
16	Grass	<i>Distichlis spicata</i>	Noxious Weed C	<i>Erodium cicutarium</i>
17	Grass	<i>Buchloe dactyloides</i>	Grass	<i>Buchloe dactyloides</i>
18	Grass	<i>Buchloe dactyloides</i>	Grass	<i>Buchloe dactyloides</i>
19	Forb	<i>Grindelia squarrosa</i>	Non-Vegetative	Rock
20	Grass	<i>Buchloe dactyloides</i>	Grass	<i>Buchloe dactyloides</i>
21	Grass	<i>Sporobolus airoides</i>	Grass	<i>Buchloe dactyloides</i>
22	Grass	<i>Buchloe dactyloides</i>	Non-Vegetative	Litter
23	Grass	<i>Sporobolus airoides</i>	Grass	<i>Sporobolus airoides</i>
24			Non-Vegetative	Litter
25			Non-Vegetative	Litter
26	Grass	<i>Sporobolus airoides</i>	Grass	<i>Sporobolus airoides</i>
27	Grass	<i>Distichlis spicata</i>	Grass	<i>Distichlis spicata</i>
28	Grass	<i>Buchloe dactyloides</i>	Grass	<i>Buchloe dactyloides</i>
29			Non-Vegetative	Litter
30	Grass	<i>Distichlis spicata</i>	Non-Vegetative	Litter
31	Grass	<i>Distichlis spicata</i>	Grass	<i>Distichlis spicata</i>
32	Grass	<i>Distichlis spicata</i>	Grass	<i>Distichlis spicata</i>
33	Grass	<i>Distichlis spicata</i>	Grass	<i>Distichlis spicata</i>
34	Forb	<i>Xylorhiza spp.</i>	Non-Vegetative	Litter
35	Grass	<i>Distichlis spicata</i>	Grass	<i>Distichlis spicata</i>
36			Non-Vegetative	Litter
37			Non-Vegetative	Bare Ground
38			Non-Vegetative	Rock
39			Non-Vegetative	Bare Ground
40	Grass	<i>Buchloe dactyloides</i>	Non-Vegetative	Litter
41	Grass	<i>Digitaria sanguinalis</i>	Forb	<i>Polygonum aviculare</i>
42	Grass	<i>Buchloe dactyloides</i>	Grass	<i>Buchloe dactyloides</i>
43			Non-Vegetative	Litter
44	Grass	<i>Distichlis spicata</i>	Grass	<i>Distichlis spicata</i>
45	Grass	<i>Buchloe dactyloides</i>	Grass	<i>Buchloe dactyloides</i>
46	Grass	<i>Buchloe dactyloides</i>	Noxious Weed C	<i>Tribulus terrestris</i>
47	Grass	<i>Sporobolus airoides</i>	Grass	<i>Sporobolus airoides</i>
48	Grass	<i>Sporobolus airoides</i>	Grass	<i>Sporobolus airoides</i>
49	Grass	<i>Distichlis spicata</i>	Grass	<i>Distichlis spicata</i>
50	Grass	<i>Pascopyrum smithii</i> Agropyron	Grass	<i>Distichlis spicata</i>

Vegetation Survey (Field Data Table)

Client: PDC Energy Inc.
 Operator Location Information (API): P J 2 Well (API # 05-123-16110)
 Transect ID: Reclaim Transect 2
 Transect Length: 209 ft.
 Assessment Date: 10/3/2019
 Inspector: Adam Roll

Point	Foliar	Species	Basal	Species
1	Grass	<i>Eragrostis trichodes</i>	Grass	<i>Buchloe dactyloides</i>
2	Grass	<i>Eragrostis trichodes</i>	Grass	<i>Buchloe dactyloides</i>
3	Grass	<i>Distichlis spicata</i>	Grass	<i>Distichlis spicata</i>
4	Grass	<i>Eragrostis trichodes</i>	Grass	<i>Eragrostis trichodes</i>
5			Non-Vegetative	Litter
6	Grass	<i>Distichlis spicata</i>	Grass	<i>Distichlis spicata</i>
7	Noxious Weed C	<i>Convolvulus arvensis</i>	Grass	<i>Distichlis spicata</i>
8	Grass	<i>Distichlis spicata</i>	Grass	<i>Distichlis spicata</i>
9			Non-Vegetative	Litter
10	Grass	<i>Distichlis spicata</i>	Grass	<i>Distichlis spicata</i>
11	Grass	<i>Distichlis spicata</i>	Grass	<i>Buchloe dactyloides</i>
12	Grass	<i>Pascopyrum smithii Agropyron</i>	Grass	<i>Pascopyrum smithii Agropyron</i>
13	Grass	<i>Distichlis spicata</i>	Grass	<i>Distichlis spicata</i>
14	Grass	<i>Distichlis spicata</i>	Non-Vegetative	Litter
15			Non-Vegetative	Litter
16	Grass	<i>Distichlis spicata</i>	Grass	<i>Distichlis spicata</i>
17	Grass	<i>Distichlis spicata</i>	Grass	<i>Distichlis spicata</i>
18	Grass	<i>Distichlis spicata</i>	Grass	<i>Distichlis spicata</i>
19	Forb	<i>Polygonum aviculare</i>	Forb	<i>Polygonum aviculare</i>
20			Non-Vegetative	Litter
21			Non-Vegetative	Rock
22	Grass	<i>Distichlis spicata</i>	Noxious Weed C	<i>Tribulus terrestris</i>
23	Grass	<i>Buchloe dactyloides</i>	Grass	<i>Buchloe dactyloides</i>
24	Grass	<i>Buchloe dactyloides</i>	Non-Vegetative	Rock
25	Grass	<i>Distichlis spicata</i>	Grass	<i>Distichlis spicata</i>
26	Grass	<i>Buchloe dactyloides</i>	Non-Vegetative	Litter
27	Grass	<i>Sporobolus airoides</i>	Grass	<i>Sporobolus airoides</i>
28	Grass	<i>Distichlis spicata</i>	Grass	<i>Distichlis spicata</i>
29	Grass	<i>Buchloe dactyloides</i>	Grass	<i>Buchloe dactyloides</i>
30			Non-Vegetative	Litter
31	Grass	<i>Sporobolus airoides</i>	Grass	<i>Buchloe dactyloides</i>
32			Non-Vegetative	Litter
33	Grass	<i>Buchloe dactyloides</i>	Grass	<i>Buchloe dactyloides</i>
34	Grass	<i>Distichlis spicata</i>	Grass	<i>Distichlis spicata</i>
35	Grass	<i>Distichlis spicata</i>	Grass	<i>Distichlis spicata</i>
36	Grass	<i>Sporobolus airoides</i>	Grass	<i>Distichlis spicata</i>
37	Grass	<i>Distichlis spicata</i>	Non-Vegetative	Litter
38	Grass	<i>Sporobolus airoides</i>	Noxious Weed C	<i>Convolvulus arvensis</i>
39	Grass	<i>Distichlis spicata</i>	Grass	<i>Distichlis spicata</i>
40	Grass	<i>Buchloe dactyloides</i>	Grass	<i>Buchloe dactyloides</i>
41			Non-Vegetative	Litter
42	Grass	<i>Distichlis spicata</i>	Non-Vegetative	Litter
43	Grass	<i>Buchloe dactyloides</i>	Grass	<i>Buchloe dactyloides</i>
44	Forb	<i>Descurainia pinnata</i>	Grass	<i>Buchloe dactyloides</i>
45			Non-Vegetative	Litter
46			Non-Vegetative	Litter
47	Grass	<i>Pascopyrum smithii Agropyron</i>	Grass	<i>Pascopyrum smithii Agropyron</i>
48	Grass	<i>Distichlis spicata</i>	Grass	<i>Distichlis spicata</i>
49	Noxious Weed C	<i>Convolvulus arvensis</i>	Grass	<i>Distichlis spicata</i>
50	Grass	<i>Buchloe dactyloides</i>	Grass	<i>Buchloe dactyloides</i>

Vegetation Survey (Field Data Table)

Client: PDC Energy Inc.
Operator Location Information (API): P J 2 Well (API # 05-123-16110)
Transect ID: Reference Transect 1
Transect Length: 234 ft.
Assessment Date: 10/3/2019
Inspector: Adam Roll

Point	Foliar	Species	Basal	Species
1	Grass	<i>Pascopyrum smithii</i> <i>Agropyron</i>	Grass	<i>Distichlis spicata</i>
2	Grass	<i>Distichlis spicata</i>	Noxious Weed C	<i>Convolvulus arvensis</i>
3	Noxious Weed C	<i>Convolvulus arvensis</i>	Grass	<i>Distichlis spicata</i>
4	Forb	<i>Descurainia pinnata</i>	Grass	<i>Buchloe dactyloides</i>
5	Grass	<i>Distichlis spicata</i>	Grass	<i>Buchloe dactyloides</i>
6	Grass	<i>Buchloe dactyloides</i>	Grass	<i>Buchloe dactyloides</i>
7	Noxious Weed C	<i>Convolvulus arvensis</i>	Grass	<i>Buchloe dactyloides</i>
8	Grass	<i>Buchloe dactyloides</i>	Grass	<i>Buchloe dactyloides</i>
9	Grass	<i>Buchloe dactyloides</i>	Grass	<i>Buchloe dactyloides</i>
10			Non-Vegetative	Litter
11	Grass	<i>Distichlis spicata</i>	Grass	<i>Buchloe dactyloides</i>
12	Grass	<i>Buchloe dactyloides</i>	Noxious Weed C	<i>Convolvulus arvensis</i>
13	Grass	<i>Distichlis spicata</i>	Grass	<i>Distichlis spicata</i>
14	Grass	<i>Distichlis spicata</i>	Grass	<i>Distichlis spicata</i>
15	Grass	<i>Distichlis spicata</i>	Non-Vegetative	Litter
16	Grass	<i>Distichlis spicata</i>	Grass	<i>Distichlis spicata</i>
17	Grass	<i>Distichlis spicata</i>	Grass	<i>Distichlis spicata</i>
18	Grass	<i>Buchloe dactyloides</i>	Grass	<i>Buchloe dactyloides</i>
19	Grass	<i>Distichlis spicata</i>	Grass	<i>Distichlis spicata</i>
20	Grass	<i>Distichlis spicata</i>	Grass	<i>Distichlis spicata</i>
21	Grass	<i>Distichlis spicata</i>	Grass	<i>Distichlis spicata</i>
22	Grass	<i>Distichlis spicata</i>	Grass	<i>Buchloe dactyloides</i>
23	Grass	<i>Buchloe dactyloides</i>	Grass	<i>Buchloe dactyloides</i>
24	Noxious Weed C	<i>Convolvulus arvensis</i>	Non-Vegetative	Bare Ground
25	Grass	<i>Distichlis spicata</i>	Grass	<i>Distichlis spicata</i>
26	Grass	<i>Distichlis spicata</i>	Grass	<i>Distichlis spicata</i>
27	Grass	<i>Distichlis spicata</i>	Non-Vegetative	Litter
28	Grass	<i>Buchloe dactyloides</i>	Grass	<i>Buchloe dactyloides</i>
29	Grass	<i>Buchloe dactyloides</i>	Grass	<i>Buchloe dactyloides</i>
30	Forb	<i>Malva neglecta</i>	Grass	<i>Buchloe dactyloides</i>
31	Noxious Weed C	<i>Convolvulus arvensis</i>	Grass	<i>Buchloe dactyloides</i>
32	Noxious Weed C	<i>Convolvulus arvensis</i>	Grass	<i>Buchloe dactyloides</i>
33	Grass	<i>Pascopyrum smithii</i> <i>Agropyron</i>	Grass	<i>Pascopyrum smithii</i> <i>Agropyron</i>
34			Non-Vegetative	Litter
35	Grass	<i>Pascopyrum smithii</i> <i>Agropyron</i>	Grass	<i>Buchloe dactyloides</i>
36	Grass	<i>Buchloe dactyloides</i>	Grass	<i>Buchloe dactyloides</i>
37			Non-Vegetative	Litter
38	Grass	<i>Elymus trachycaulus</i>	Grass	<i>Buchloe dactyloides</i>
39			Non-Vegetative	Litter
40	Grass	<i>Buchloe dactyloides</i>	Grass	<i>Buchloe dactyloides</i>
41	Grass	<i>Buchloe dactyloides</i>	Grass	<i>Buchloe dactyloides</i>
42	Noxious Weed B	<i>Onopordum acanthium</i>	Grass	<i>Buchloe dactyloides</i>
43	Grass	<i>Buchloe dactyloides</i>	Grass	<i>Buchloe dactyloides</i>
44	Grass	<i>Distichlis spicata</i>	Grass	<i>Distichlis spicata</i>
45	Grass	<i>Buchloe dactyloides</i>	Grass	<i>Buchloe dactyloides</i>
46	Grass	<i>Buchloe dactyloides</i>	Grass	<i>Buchloe dactyloides</i>
47	Grass	<i>Buchloe dactyloides</i>	Grass	<i>Buchloe dactyloides</i>
48	Grass	<i>Pascopyrum smithii</i> <i>Agropyron</i>	Grass	<i>Buchloe dactyloides</i>
49	Grass	<i>Distichlis spicata</i>	Grass	<i>Distichlis spicata</i>
50	Grass	<i>Distichlis spicata</i>	Grass	<i>Distichlis spicata</i>

Vegetation Survey (Field Data Table)

Client: PDC Energy Inc.
Operator Location Information (API): P J 2 Well (API # 05-123-16110)
Transect ID: Reference Transect 2
Transect Length: 250 ft.
Assessment Date: 10/3/2019
Inspector: Adam Roll

Point	Foliar	Species	Basal	Species
1	Grass	<i>Buchloe dactyloides</i>	Grass	<i>Buchloe dactyloides</i>
2	Noxious Weed C	<i>Convolvulus arvensis</i>	Grass	<i>Buchloe dactyloides</i>
3	Grass	<i>Distichlis spicata</i>	Grass	<i>Buchloe dactyloides</i>
4	Grass	<i>Distichlis spicata</i>	Grass	<i>Distichlis spicata</i>
5	Grass	<i>Buchloe dactyloides</i>	Grass	<i>Buchloe dactyloides</i>
6	Noxious Weed C	<i>Convolvulus arvensis</i>	Grass	<i>Buchloe dactyloides</i>
7	Grass	<i>Buchloe dactyloides</i>	Non-Vegetative	Bare Ground
8	Noxious Weed C	<i>Convolvulus arvensis</i>	Grass	<i>Buchloe dactyloides</i>
9	Grass	<i>Buchloe dactyloides</i>	Grass	<i>Buchloe dactyloides</i>
10	Grass	<i>Buchloe dactyloides</i>	Grass	<i>Buchloe dactyloides</i>
11			Non-Vegetative	Litter
12	Grass	<i>Buchloe dactyloides</i>	Non-Vegetative	Litter
13	Grass	<i>Buchloe dactyloides</i>	Grass	<i>Buchloe dactyloides</i>
14	Forb	<i>Descurainia pinnata</i>	Grass	<i>Buchloe dactyloides</i>
15	Grass	<i>Buchloe dactyloides</i>	Grass	<i>Buchloe dactyloides</i>
16	Grass	<i>Buchloe dactyloides</i>	Grass	<i>Buchloe dactyloides</i>
17	Noxious Weed C	<i>Convolvulus arvensis</i>	Grass	<i>Buchloe dactyloides</i>
18	Grass	<i>Buchloe dactyloides</i>	Grass	<i>Buchloe dactyloides</i>
19	Grass	<i>Buchloe dactyloides</i>	Non-Vegetative	Litter
20	Grass	<i>Distichlis spicata</i>	Grass	<i>Distichlis spicata</i>
21	Noxious Weed C	<i>Convolvulus arvensis</i>	Grass	<i>Distichlis spicata</i>
22			Non-Vegetative	Litter
23	Forb	<i>Malva neglecta</i>	Grass	<i>Buchloe dactyloides</i>
24	Grass	<i>Buchloe dactyloides</i>	Noxious Weed C	<i>Convolvulus arvensis</i>
25	Grass	<i>Buchloe dactyloides</i>	Grass	<i>Buchloe dactyloides</i>
26	Grass	<i>Buchloe dactyloides</i>	Grass	<i>Buchloe dactyloides</i>
27	Grass	<i>Distichlis spicata</i>	Non-Vegetative	Litter
28	Grass	<i>Buchloe dactyloides</i>	Grass	<i>Buchloe dactyloides</i>
29	Noxious Weed C	<i>Convolvulus arvensis</i>	Grass	<i>Buchloe dactyloides</i>
30	Grass	<i>Distichlis spicata</i>	Grass	<i>Distichlis spicata</i>
31	Forb	<i>Polygonum aviculare</i>	Grass	<i>Buchloe dactyloides</i>
32	Grass	<i>Buchloe dactyloides</i>	Noxious Weed C	<i>Convolvulus arvensis</i>
33			Non-Vegetative	Litter
34	Forb	<i>Descurainia pinnata</i>	Grass	<i>Buchloe dactyloides</i>
35	Grass	<i>Buchloe dactyloides</i>	Grass	<i>Buchloe dactyloides</i>
36	Forb	<i>Plantago patagonica</i>	Forb	<i>Plantago patagonica</i>
37			Non-Vegetative	Litter
38	Grass	<i>Buchloe dactyloides</i>	Noxious Weed C	<i>Convolvulus arvensis</i>
39	Grass	<i>Elymus trachycaulus</i>	Grass	<i>Distichlis spicata</i>
40	Grass	<i>Distichlis spicata</i>	Grass	<i>Distichlis spicata</i>
41	Noxious Weed C	<i>Convolvulus arvensis</i>	Grass	<i>Distichlis spicata</i>
42	Grass	<i>Distichlis spicata</i>	Grass	<i>Distichlis spicata</i>
43	Noxious Weed C	<i>Convolvulus arvensis</i>	Grass	<i>Distichlis spicata</i>
44	Grass	<i>Distichlis spicata</i>	Grass	<i>Distichlis spicata</i>
45	Grass	<i>Pascopyrum smithii</i> Agropyron	Non-Vegetative	Litter
46	Grass	<i>Distichlis spicata</i>	Grass	<i>Buchloe dactyloides</i>
47	Grass	<i>Distichlis spicata</i>	Grass	<i>Distichlis spicata</i>
48	Grass	<i>Distichlis spicata</i>	Grass	<i>Distichlis spicata</i>
49	Grass	<i>Buchloe dactyloides</i>	Grass	<i>Buchloe dactyloides</i>
50	Grass	<i>Distichlis spicata</i>	Grass	<i>Distichlis spicata</i>