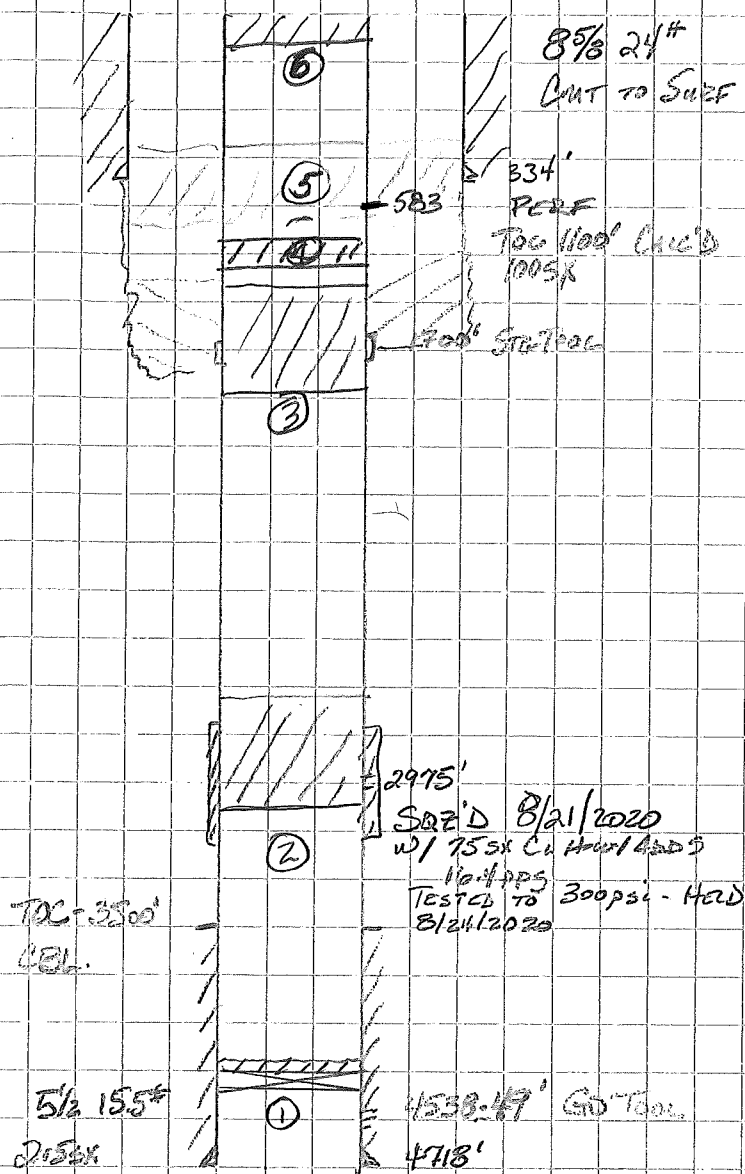


RTA PROPOSED.

SDR 11/30/2020



SNIFF E #1
15-235-48E
BENT CO, CO
05-011-0606
WAGON TRAIL FIELD

PROPOSED

- ① LIBP @ 4500' $\pm 25\%$ Cut DUMP BAIL
- ② 30SK - 265' Plug
2735 - 3000'
- ③ 15SK - 132' Plug.
1750 - 1618'
- ④ 15SK - 100' 1100' - 1200'
- ⑤ 80SK PERF @ 563'
Plug SDIN + OUT 284 - 563'
IN $(279') \times (.1336) = 374^3$
 $50(.1992) + 229(.1992) = 55 \text{ ft}^3 \Rightarrow 80SK$
- ⑥ 30 SKS SURF Plug.

TOTAL SK 170SK