

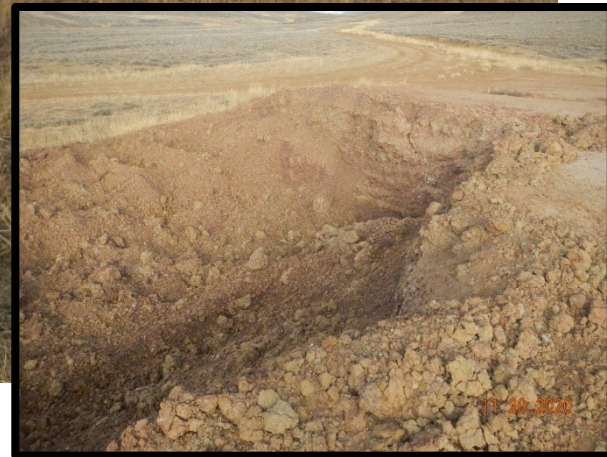
# *Inspection Photos*

*API# 081-06745*

*Operator: Argali*

*Insp#: 692402737*

*Insp Date: 11/20/2020*



Photo#1:

Overview of Location to Northwest. Insert is excavation on Northwest corner of Pad

November 20, 2020



Photo#2:  
Overview of Location to Southeast. Wellhead circled in red.

November 20, 2020



Photo#3:  
Channel erosion on West side Fill Slope.

Photo#4:  
Channel erosion on West side Fill Slope.

November 20, 2020



**COLORADO**  
Oil & Gas Conservation  
Commission  
Department of Natural Resources

Inspection Photos: Argali PA Federal API#081-06745



Photo#5:  
Concrete slabs, signs, remain on site.



Photo#6:  
Debris, equipment remain on site

November 20, 2020



**COLORADO**  
Oil & Gas Conservation  
Commission  
Department of Natural Resources

Inspection Photos: Argali PA Federal API#081-06745