

Coral Production Corp, Christiansen B-5  
121-10711

Inspection #688309035

11/23/2020

Reinspection



Closest producing well to tank battery/pit. No pit correlated to this well. Nearby PA well 121-05453 does have pits.

Colorado Oil and Gas Conservation Commission  
39.76922, -102.96711, 4491.5ft, 82°  
11/23/2020 10:31:26 AM





Stuffing box leak,  
stained soil.

Colorado Oil and Gas Conservation Commission  
39.76925, -102.96724, 4484.9ft, 39°  
11/23/2020 10:31:36 AM





Colorado Oil and Gas Conservation Commission  
39.76929, -102.96715, 4494.8ft, 233°  
11/23/2020 10:32:07 AM



**CORAL PRODUCTION CORP.**  
**1-888-441-3007** OR CALL 911

**CHRISTIANSON TANK BATTERY**  
**Access Road CR. RR**  
**S/2 NW SEC. 27-3S-50W**

**WASHINGTON COUNTY, CO**

Colorado Oil and Gas Conservation Commission  
39.76765, -102.96761, 4448.8ft, 55°  
11/23/2020 10:44:05 AM





Colorado Oil and Gas Conservation Commission  
39.76679, -102.96691, 4475.1ft, 357°  
11/23/2020 11:30:49 AM





Open top  
with wire  
cover?

Colorado Oil and Gas Conservation Commission  
39.76774, -102.96757, 4494.8ft, 25°  
11/23/2020 11:35:44 AM

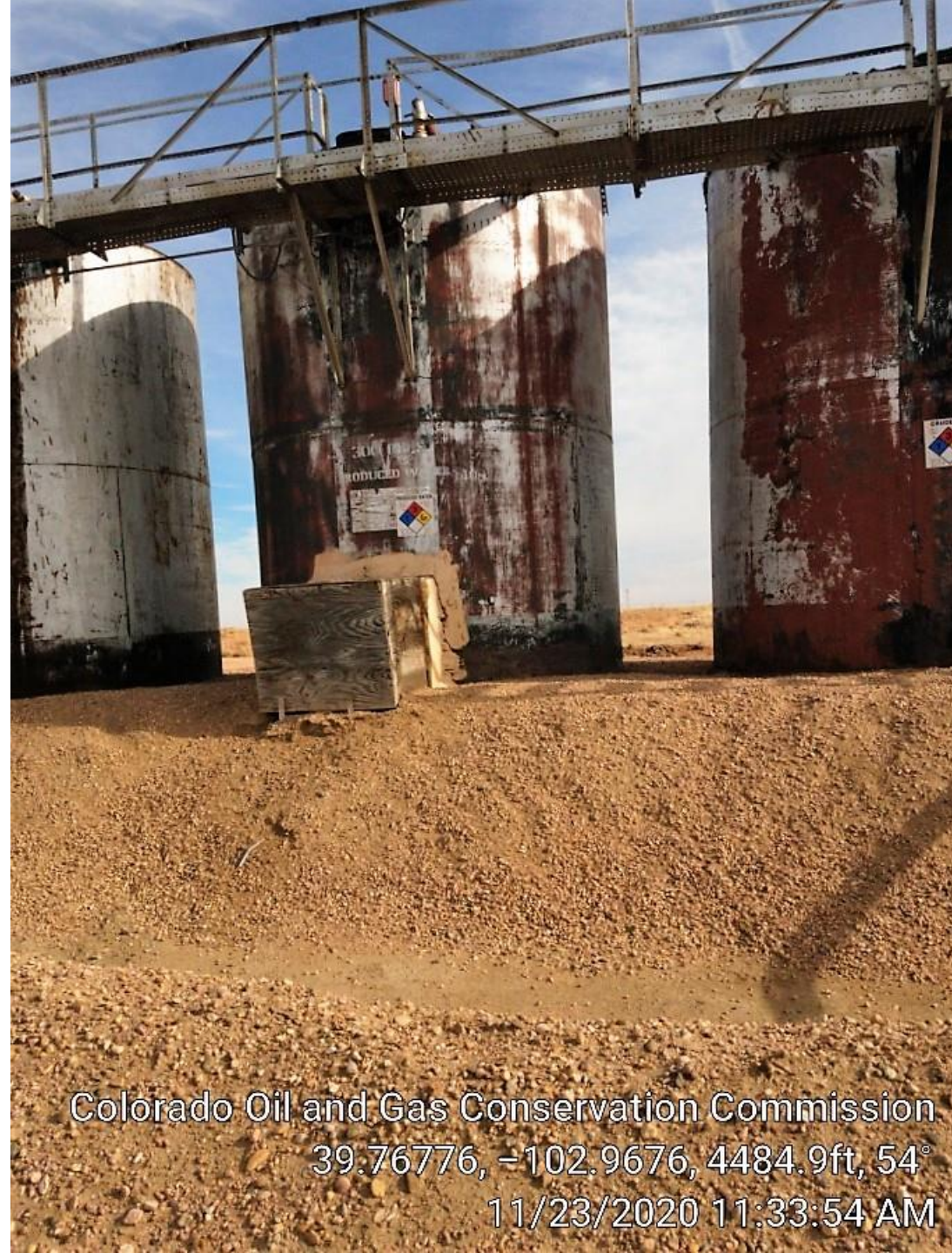




A 300 bbl crude oil tank that over topped and covered most labels.

Colorado Oil and Gas Conservation Commission  
39.76784, -102.96759, 4488.2ft, 67°  
11/23/2020 11:34:04 AM

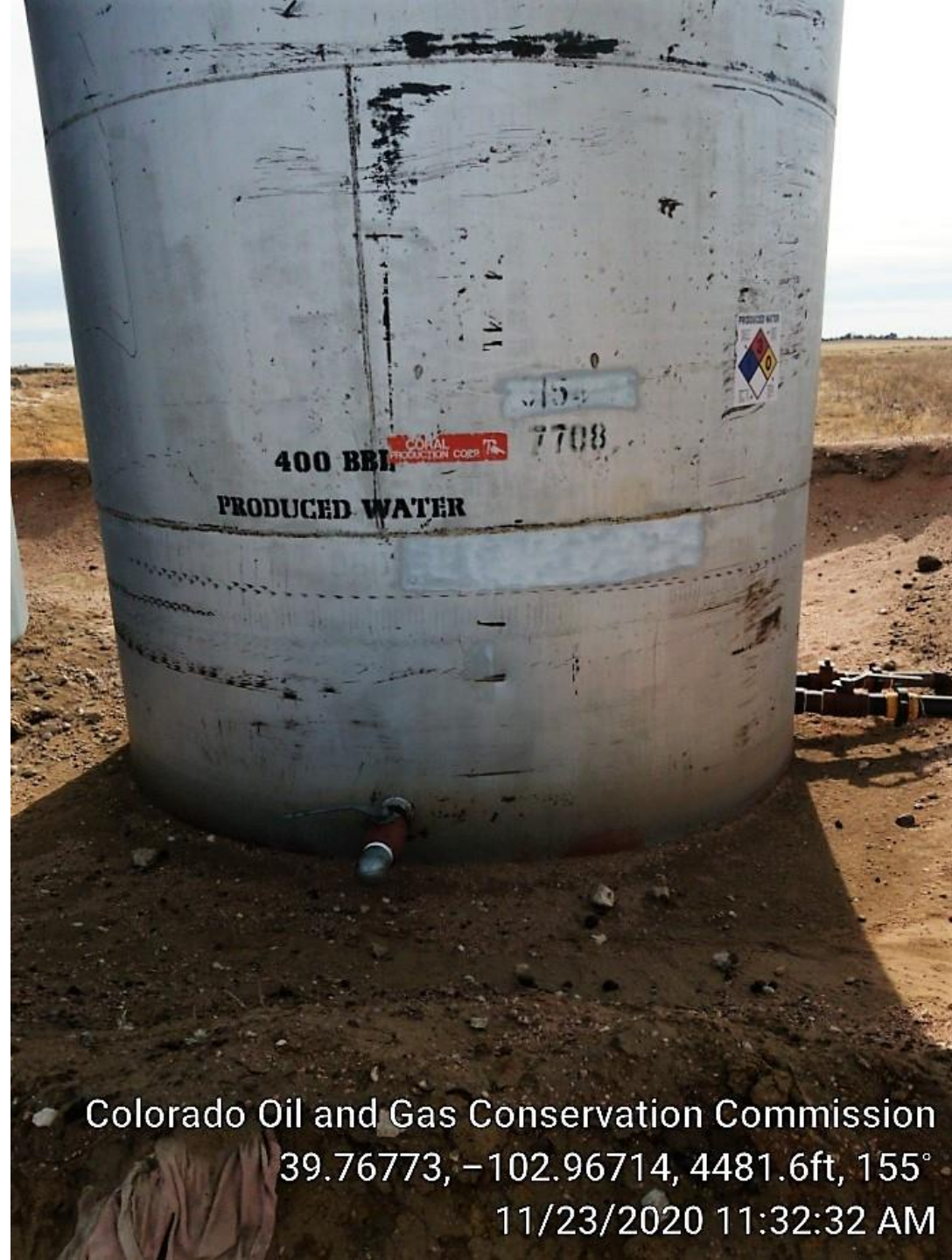




300 bbl  
produced  
water tank

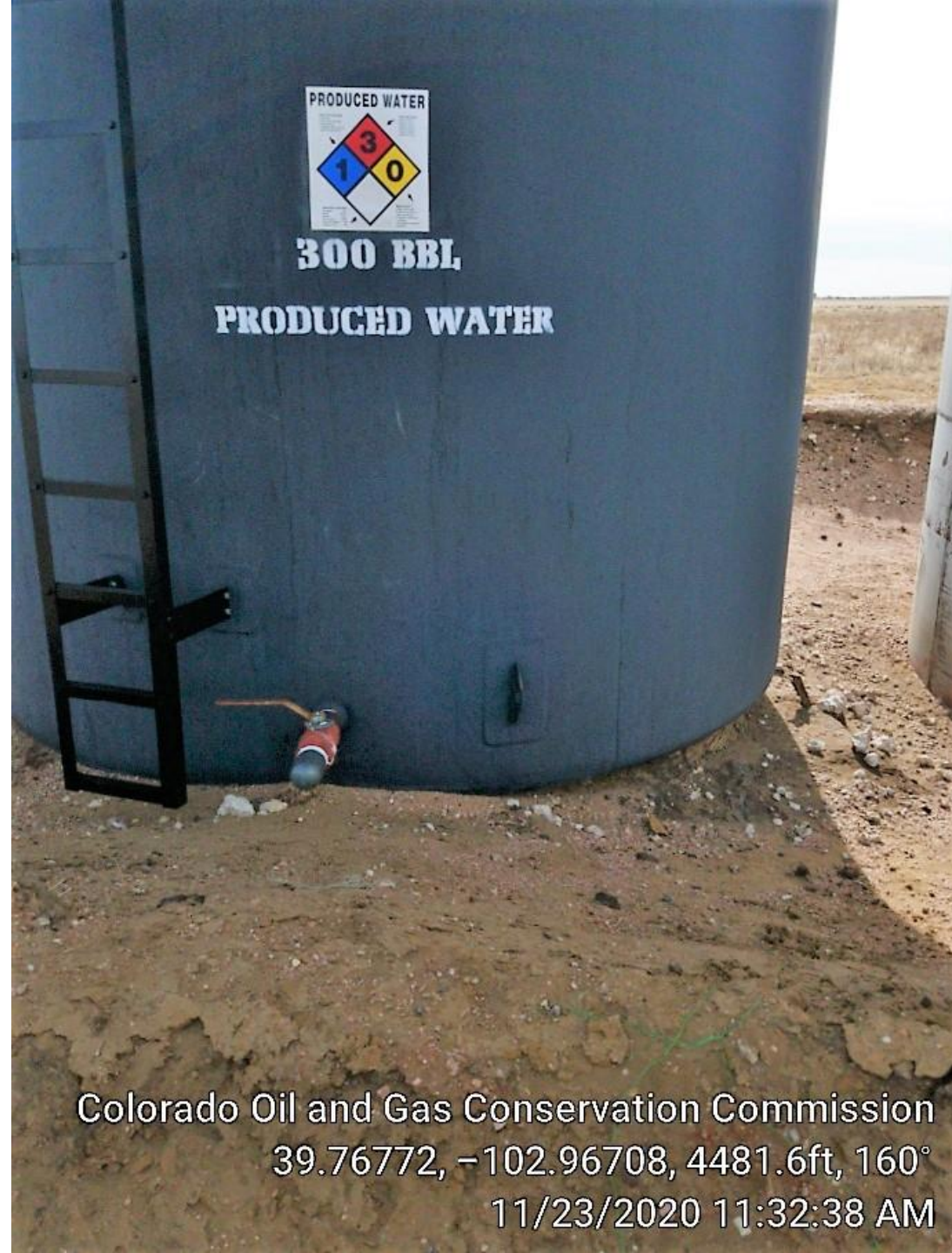
Colorado Oil and Gas Conservation Commission  
39.76776, -102.9676, 4484.9ft, 54°  
11/23/2020 11:33:54 AM



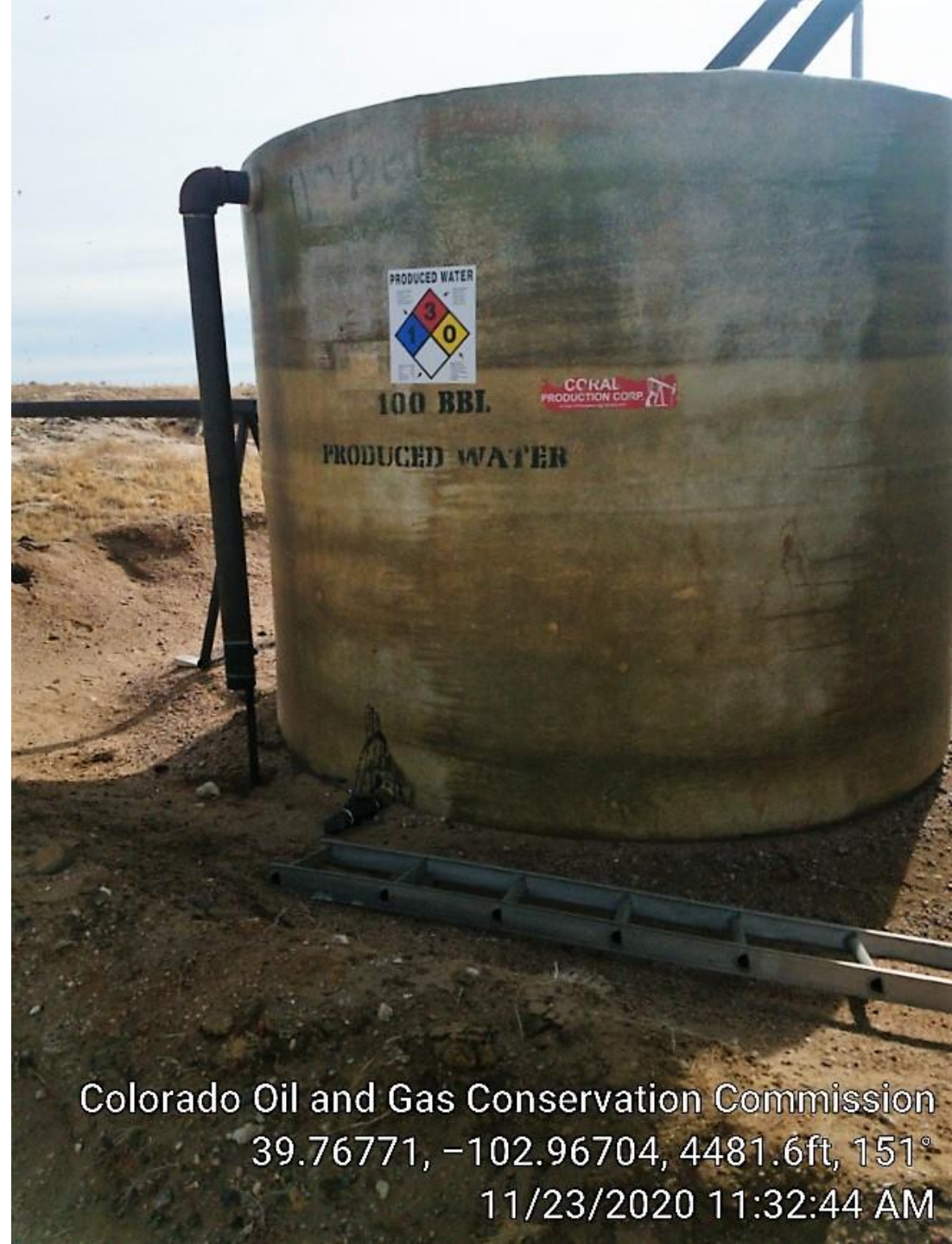


Colorado Oil and Gas Conservation Commission  
39.76773, -102.96714, 4481.6ft, 155°  
11/23/2020 11:32:32 AM





Colorado Oil and Gas Conservation Commission  
39.76772, -102.96708, 4481.6ft, 160°  
11/23/2020 11:32:38 AM



Colorado Oil and Gas Conservation Commission  
39.76771, -102.96704, 4481.6ft, 151°  
11/23/2020 11:32:44 AM





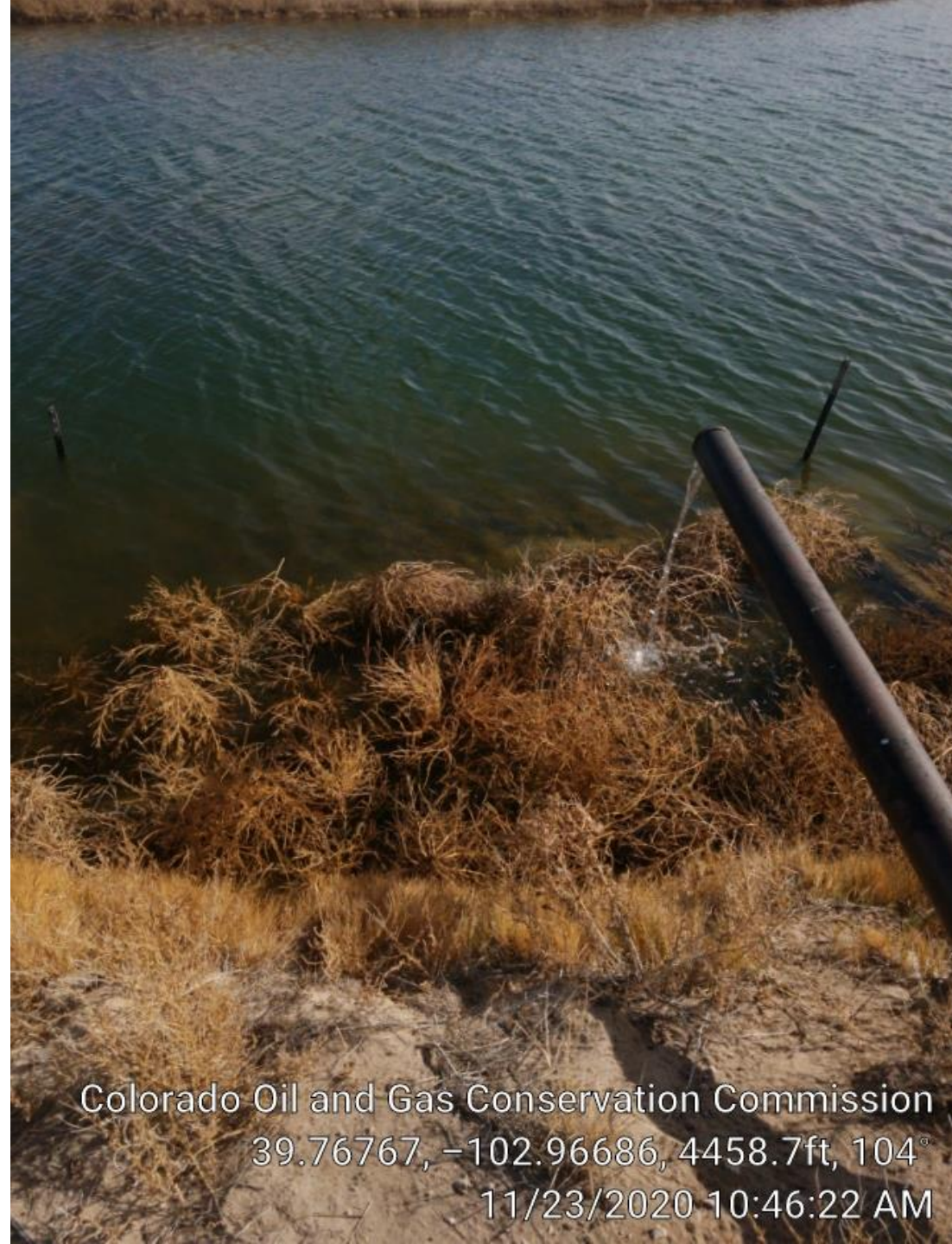
Animal  
holes in  
produced  
water  
tank  
berms.

Colorado Oil and Gas Conservation Commission

39.6457, -102.85058, 314°

11/23/2020 10:46:04 AM





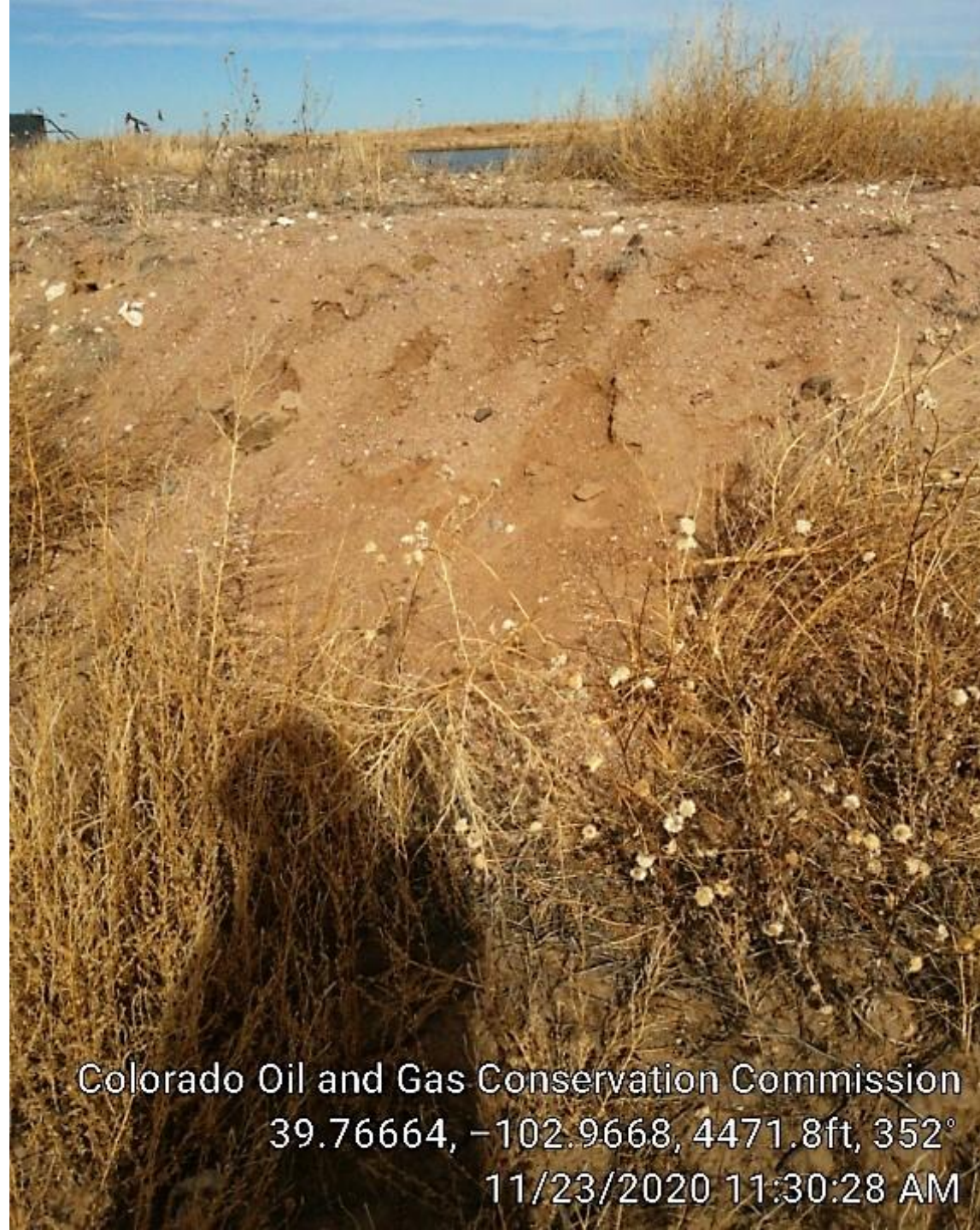
Colorado Oil and Gas Conservation Commission  
39.76767, -102.96686, 4458.7ft, 104°  
11/23/2020 10:46:22 AM





Colorado Oil and Gas Conservation Commission  
39.76704, -102.96648, 4409.4ft, 134°  
11/23/2020 10:47:43 AM





Previously  
repaired area  
on SW cor on  
berm.

Colorado Oil and Gas Conservation Commission  
39.76664, -102.9668, 4471.8ft, 352°  
11/23/2020 11:30:28 AM





Animal holes (see next photo) in pit berms at SW corner near previously repaired area.

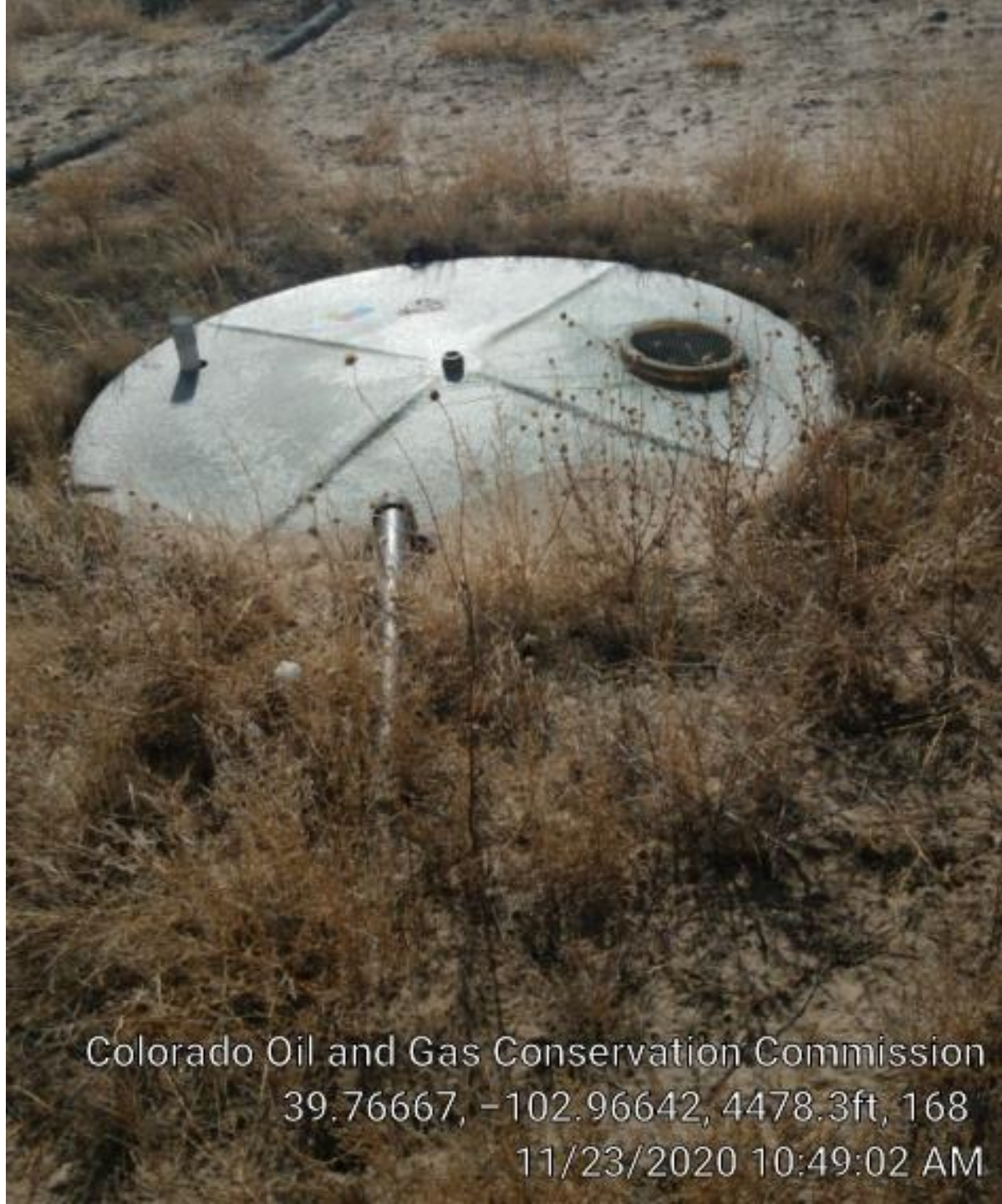
Colorado Oil and Gas Conservation Commission  
39.76665, -102.96675, 4481.6ft, 30°  
11/23/2020 11:30:18 AM





Colorado Oil and Gas Conservation Commission  
39.76665, -102.96675, 4484.9ft, 48°  
11/23/2020 11:30:21 AM





Partially  
buried, 100  
bbl, fiberglass  
produced  
water tank at  
south end of  
pit that has  
water running  
into it (see  
pipe).

Colorado Oil and Gas Conservation Commission  
39.76667, -102.96642, 4478.3ft, 168  
11/23/2020 10:49:02 AM





Colorado Oil and Gas Conservation Commission  
39.7666, -102.96642, 4475.1ft, 317°  
11/23/2020 11:29:33 AM





Colorado Oil and Gas Conservation Commission  
39.76661, -102.96622, 4465.2ft, 275°  
11/23/2020 11:29:08 AM





Tank battery fence  
between south  
fiberglass tank and the  
pasture.

Colorado Oil and Gas Conservation Commission  
39.76653, -102.96626, 4478.3ft, 177°  
11/23/2020 10:49:28 AM





Colorado Oil and Gas Conservation Commission  
39.76661, -102.96622, 4465.2ft, 275°  
11/23/2020 11:29:08 AM





Colorado Oil and Gas Conservation Commission  
39.76591, -102.96673, 4458.7ft, 257°  
11/23/2020 11:26:27 AM





PVC pipe with  
water running  
from it into  
pasture.

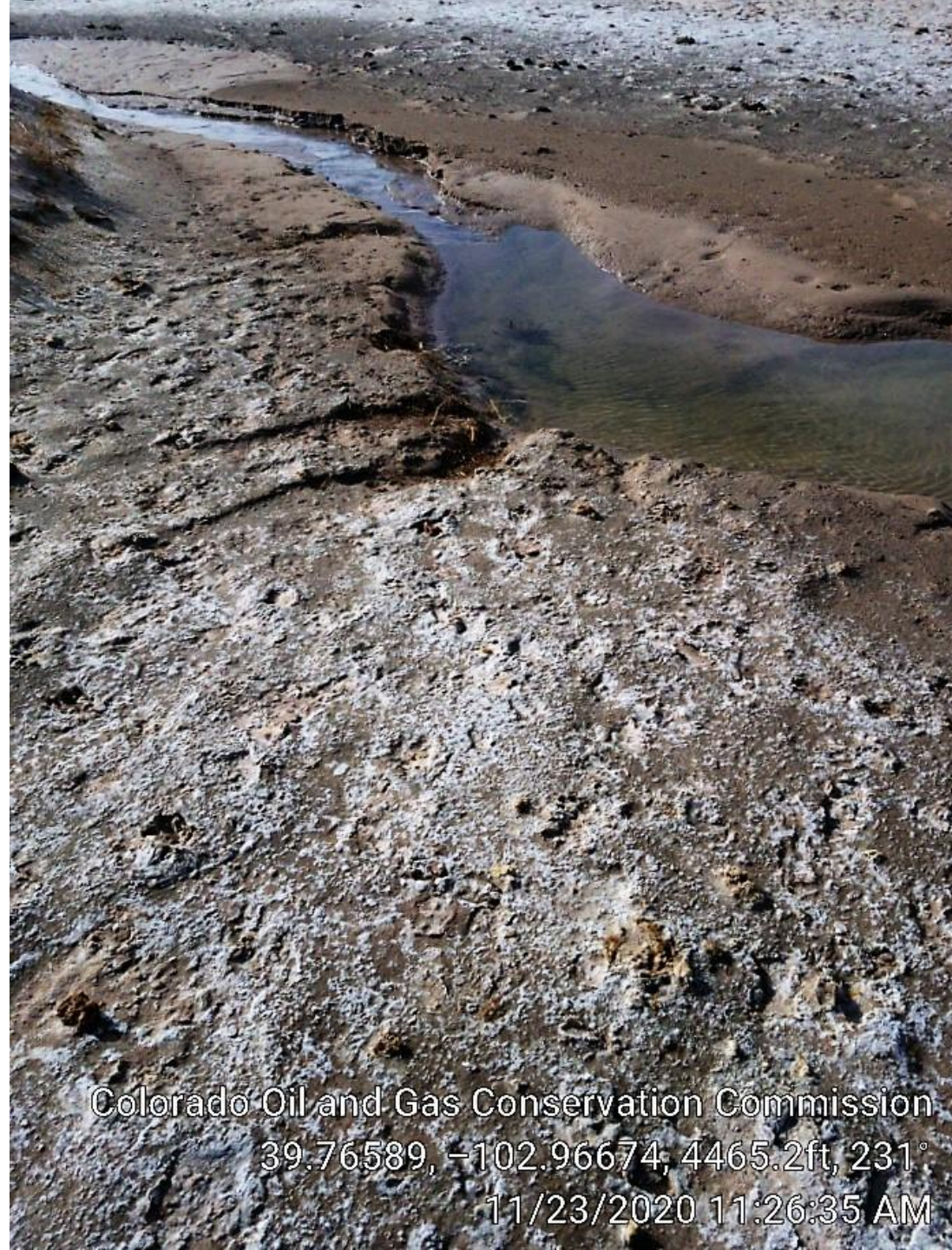
Colorado Oil and Gas Conservation Commission  
39.76587, -102.96682, 4458.7ft, 88°  
11/23/2020 11:26:03 AM





Colorado Oil and Gas Conservation Commission  
39.76589, -102.96677, 4468.5ft, 205°  
11/23/2020 11:26:41 AM





Colorado Oil and Gas Conservation Commission  
39.76589, -102.96674, 4465.2ft, 231°  
11/23/2020 11:26:35 AM





Wildlife tracks near  
water outlet from  
pipe. Salt stained  
soil.

Colorado Oil and Gas Conservation Commission  
39.76589, -102.96677, 4471.8ft, 62°  
11/23/2020 11:26:44 AM