

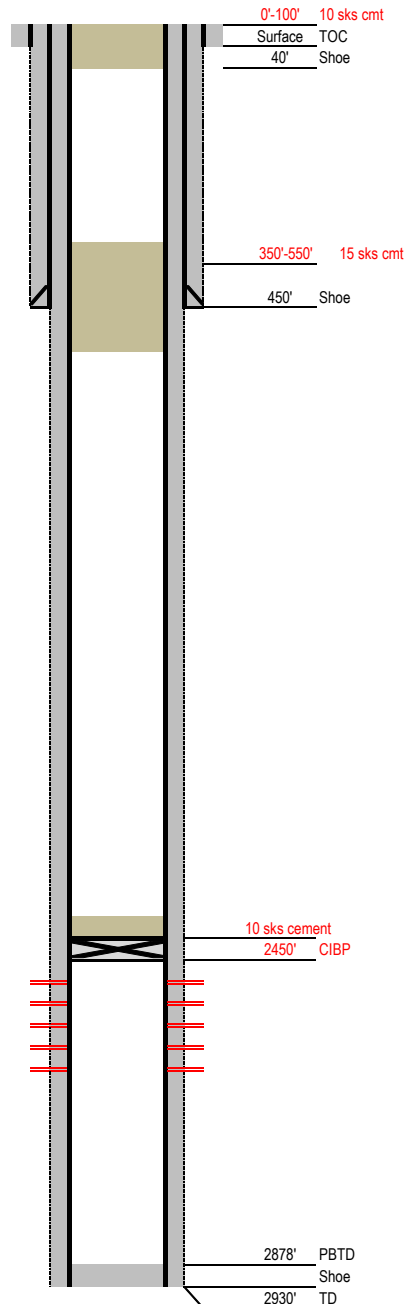
Laramie Energy

Proposed P&A Wellbore Diagram

Not to Scale

FEDERAL WELL: YES ☒ NO ☐

Geological Tops	Depth (MD)
Cameo	1999'
Rollins	2303'
Cozzette	2478'
Corcoran	2680'
Sego	2810'



Well Name Horseshoe Canyon 1-29
API 05-077-08652-00
Surface Location SENE S19, T9S, R97W
GPS Coordinates 39.261775 -108.255036
Bottom Hole Loc 945 FEL & 1696 FNL SEC 19 T9S R97W
Field Shire Gulch # 77450
County, State Mesa, CO # 077
Spud Date 11/23/1992
Completion Date 12/10/1992
Diagram Date 11/24/2020
KB Elevation 5164'
KB 13'
GL Elevation 5151'

Hole -
Conductor 16" .25" wall @ 40'
Cement Surface

Surface Hole 12.25" @ 450'
Casing 8.625" 24# J55 STC @ 449'
Cement 325sx Prem Plus A6 - 2% CaCl + 1/4# Flocele (32bbl to srf)
TOC Surface

Production Hole 7.875" @ 2920'
Casing 4-1/2" 11.6 ppf K55 LTC @ 2920'
Cement 75sx Hifill (std) - tail w/ 175sx 50/50 Poz, 10% salt, 2% gel + 1/4# Flocele
154sx Class G + .4% WL-1P foamed w/ N2 - tail w/ 120sx Class G, 10% Thixol, 2% CaCl
TOC Surface

Tubing 2 3/8" 4.7 ppf J55 EUE @ 2772'

Perforations	Top	Bottom
	2503'	2754'