

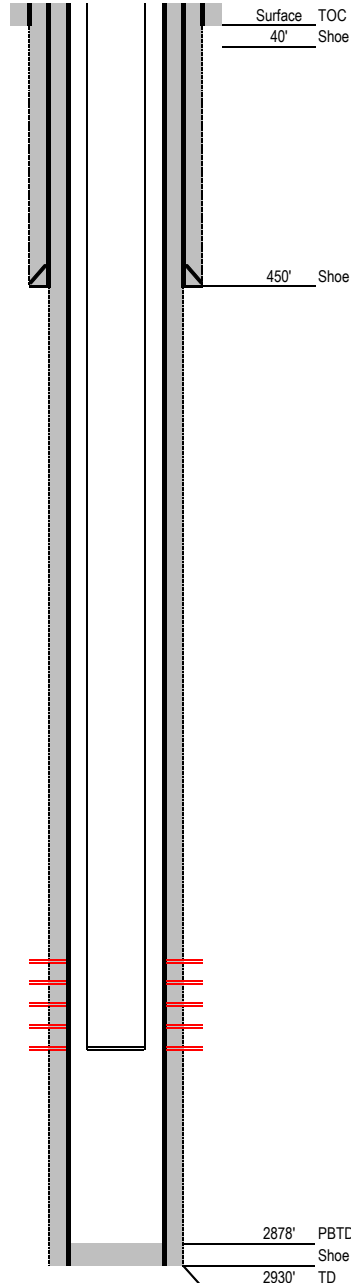
# Laramie Energy

## Current Wellbore Diagram

Not to Scale

FEDERAL WELL: YES ☒ NO ☐

Geological Tops	Depth (MD)
Cameo	1999'
Rollins	2303'
Cozzette	2478'
Corcoran	2680'
Sego	2810'



**Well Name** Horseshoe Canyon 1-29  
**API** 05-077-08652-00  
**Surface Location** SENE S19, T9S, R97W  
**GPS Coordinates** 39.261775 -108.255036  
**Bottom Hole Loc** 945 FEL & 1696 FNL SEC 19 T9S R97W  
**Field** Shire Gulch # 77450  
**County, State** Mesa, CO # 077  
**Spud Date** 11/23/1992  
**Completion Date** 12/10/1992  
**Diagram Date** 11/24/2020  
**KB Elevation** 5164'  
**KB** 13'  
**GL Elevation** 5151'

Hole	-
Conductor	16" .25" wall @ 40'
Cement	Surface

<b>Surface Hole</b>	12.25" @ 450'
Casing	8.625" 24# J55 STC @ 449'
Cement	325sx Prem Plus A6 - 2% CaCl + 1/4# Flocele (32bbl to srf)
TOC	Surface

<b>Production Hole</b>	7.875" @ 2920'
Casing	4-1/2" 11.6 ppf K55 LTC @ 2920'
Cement	75sx Hifill (std) - tail w/ 175sx 50/50 Poz, 10% salt, 2% gel + 1/4# Flocele 154sx Class G + .4% WL-1P foamed w/ N2 - tail w/ 120sx Class G, 10% Thixol, 2% CaCl
TOC	Surface

<b>Tubing</b>	2 3/8" 4.7 ppf J55 EUE @ 2772'
---------------	--------------------------------

Perforations	Top	Bottom
	2503'	2754'